

Multicon plugs and sockets

The Painton Multicon range of plugs and sockets is Post Office approved and consists of 2, 4, 6, 8, 10, 12, 18, 24 and 33 pole sizes.

Electrical contact is provided by a heavily silver plated plug blade engaging with a similar socket clip, each clip having four individual contact areas to ensure absolute reliability. Any possibility of free moisture remaining between the plug and socket face is prevented by spacers moulded onto the plug body keeping the mating faces slightly apart when the plugs and sockets are fully engaged.

Connectors are finished in silver grey hammer finish and are basically interchangeable with the Painton Standard range with the exception of the 6 pole size and the 10-in-line unit.

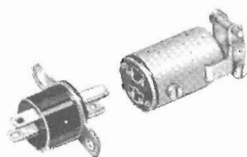
The terminal numbering is moulded into both the plug and socket bodies and appears in proximity to the appropriate soldering tag and on the mating face.

This facilitates wiring and enables complete cable forms to be tested prior to inclusion in equipments without removing the plug or socket covers.

Specification

Ambient temperature range	-40 °C to +100 °C
Humidity classification	H5 (DEF-5011)
Voltage rating	500 V D.C. or A.C. peak (tropical conditions) 1000V D.C. or A.C. peak (temperate conditions)
Current rating	5 amps D.C. or A.C. r.m.s. per contact at 70 °C 2 amps D.C. or A.C. r.m.s. per contact at 100 °C
Proof voltage	2500V D.C. or A.C. peak between contacts 3000V D.C. or A.C. peak between contacts and flange 3000V D.C. or A.C. peak between contacts and cover
Contact resistance	2 mΩ (-002 Ω) average 2.5 mΩ (-0025 Ω) maximum

Multicon range 2 poles

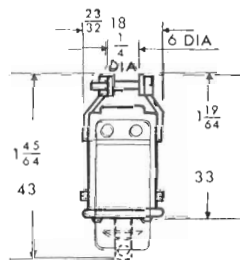
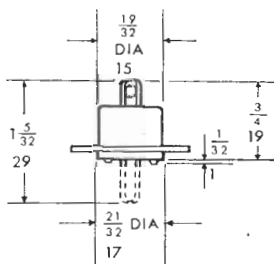


Cable diameter

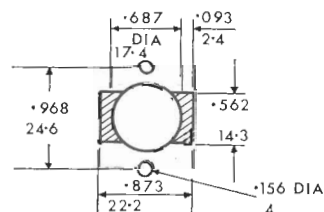
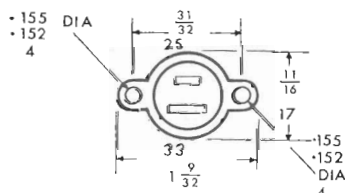
Max.	$\frac{1}{4}$	6
Min.	$\frac{3}{16}$	5



View looking on plug solder tags and socket face



Retainers (optional)



Panel cut-out. Shaded area needed only when retainers fitted.

DESCRIPTION	Ordering Code	Cat. No.
PLUGS FOR PANEL OR CHASSIS MOUNTING Side fixing mounting flange J.S. No. 5935-99-972-8221	P2/MFS	313261
PLUGS FOR CABLE TERMINATION Cable entry top cover	P2/CT	313260
Cable entry top cover with retainers	P2/CT/R2E	313600
SOCKETS FOR PANEL OR CHASSIS MOUNTING Side fixing mounting flange J.S. No. 5935-99-972-8229	S2/MFS	313263
SOCKETS FOR CABLE TERMINATION Cable entry top cover	S2/CT	313262
Cable entry top cover with retainers	S2/CT/R2E	313603