

**FLYING CONTROLS—FRONT FUSELAGE**

Ref. No.	Part No.	Description	No. Off					Material Specification	M.R. Class of Score	Place No.
			1	2	3	4	5			
	<b>E.177241</b>	<b>FLYING CONTROLS, FRONT FUSELAGE, ASSEMBLY</b>	-	-	-	-	-	-	-	
	<b>B.234558</b>	<b>Cable, rudder arm adjusting, group (AS.830/94)</b>	1	-	-	-	-	-	DD.1	
		Consisting of:—								
	A.177657	Body, union	1	-	-	-	-	-		
	B.177650/2	Cable, Bowdenex. 19/2	1	-	-	-	-	-		
	B.177650/1	Conduit, Bowdenex, T.2H	1	-	-	-	-	-		
	AS 2903	Nipple	1	-	-	-	-	-		
	A 27/ET	Nut	1	-	-	-	-	C.		
	A 177653	Pin	1	-	-	-	-	-		
	STD 1522/2	Sleeve	2	-	-	-	-	-		
	F.177655	Spring	1	-	-	-	Spr. Stj.	-		
	STD 1522/1	Stop, adjusting	1	-	-	-	-	-		
	F.188308	Pedalverstellungshebel	1	-	-	-	-	-	DD.1	
	F.188311	Anschlussbride	1	-	-	-	-	-	DD.1	
	STD 1507/2/056	Distanzhülse	1	-	-	-	-	-	DD.1	
	SP 4Y/A5	Splintbolzen	1	-	-	-	-	-	DD.1	
	<b>G.221514</b>	<b>FLYING CONTROLS UNDER PILOT'S FLOOR, ASSEMBLY</b>	-	-	-	-	-	-		
6757	F.213777	Block, at attachment of torque tube to control column (Mod. 433)	1	-	-	-	S.96.B	C.	DD.2	
5803	F.205015	Bolt, attachment of torque tube to control column, group (Mod. 297)	1	-	-	-	-	C.	DD.2	
	STD 1553/E/120	Bolt, for control column crank	2	-	-	-	S.99	C.	DD.2	
	STD 1553/E/120-1S	6kt.-Schraube, 1.Uebermass (6,55 mm)	n.B. 3	-	-	-	S.99	-	DD.2	
	STD 1553/E/130	Bolt, for control column crank	3	-	-	-	S.99	-	DD.2	
	STD 1553/E/130-1S	6kt.-Schraube, 1.Uebermass (6,55 mm)	n.B. 4	-	-	-	S.99	C.	DD.2	
	STD 1553/E/150	Bolt, for control column crank	4	-	-	-	S.99	C.	DD.2	
	STD 1553/E/150-1S	6kt.-Schraube, 1.Uebermass (6,55 mm)	n.B. 1	-	-	-	S.99.B	C.	DD.1	
1926	F.196256	Bolt, special, attachment of elevator lever	1	-	-	-	S.99.B	C.	DD.1	
2137	A-53067-S	Bush, at attachment of torque tube to control	2	-	-	-	S.2	C.	DD.2	
	A-53067-1-S	Bush 1. Uebermass (19,07 mm)	n.B.	-	-	-	-	-		
	A-53067-2-S	Bush 2. Uebermass (19,09 mm)	n.B.	-	-	-	-	-		
	A.233026 )	Control column, group	1	-	-	-	-	-	DD.1	
	D.206791 )	Adjuster	2	-	-	-	S.95.B	C.	DD.2	
207	F.180779	Bearing, at universal fork	2	-	-	-	-	B.	DD.2	
2A/9501177	Ball + Roller-BRE.1/2"	Bearing, at control column head	2	-	-	-	-	B.	DD.2	
2A/9501178	Ball + Roller-BRE.5/8"	Bolt	4	-	-	-	S.99	-		
	STD 1553/E/130	6kt.-Schraube, 1.Uebermass (6,55 mm)	n.B. 1	-	-	-	S.95.B	C.	DD.2	
208	STD 1553/E/130-1S	Bolt, attachment of control column tube to socket	1	-	-	-	S.95.B	C.	DD.2	
	F.177528	Bolt, attachment of control column tube to socket	1	-	-	-	S.95.B	C.	DD.2	
209	F.177527	Bolt, chain guard attachment	2	-	-	-	S.95.B	C.	DD.2	
220	F.166596	Block, profile	1	-	-	-	L.65.C	C.	DD.2	
8089	F.204430	Block, stop	1	-	-	-	DTB.364	C.	DD.2	
1494	F.191314	Cable, F.26, group	1	-	-	-	-	B.		
	B.254597-S1	Kabel, F.186	1	-	-	-	-	-		
	A.255023-S1	Steckdose (Steursäule)	1	-	-	-	-	-		
	Dunlop-ACM.16093	Kontakthülse	6	-	-	-	-	-		
	Dunlop-ACO.3994	Kontakthülse	2	-	-	-	-	-		
	Dunlop-ACO.4012	Kontakthülse	2	-	-	-	-	-		
	STD 2046/21/22	Kabelbride	2	-	-	-	-	-		
6099	A.209036	Guard	1	-	-	-	-	C.		
6100	A.209037	Guard	1	-	-	-	-	C.		

FLYING CONTROLS—FRONT FUSELAGE

Ref. No.	Part No.	Description	1 2 3 4 5					No. Off	Material Specification	M.R. Class of Score	Place No.
			1	2	3	4	5				
7833	A.213425	Chain, top aileron control, complete with eye ends (Mod. 188)						1	—	C.	DD.2
211	A.182743	Chain, bottom aileron control, complete with eye ends						1	—	C.	DD.2
	A.178531	Crank, control column ... ..						2	Stamping		
8662	F.221603	Clip, on chain guard for brake cable ... ..						1	—	C.	DD.2
9091	B.221990	Feel unit, group (Mod. 601) ... ..						1	—	B.	DD.2
8095	F.204424	Nut, adjusting ... ..						1	[S.1]	C.	DD.2
8091	A.212862	Spindle ... ..						1	S.95.B	C.	DD.2
8092	F.204420	Spring ... ..						1	DTD.215	C.	DD.2
8093	F.208510	Washer, stop ... ..						1	S.95.B	C.	DD.2
8094	F.204426	Washer, locking ... ..						1		C.	DD.2
	STD 1356/9	Washer, shim ... ..						1	L.A.	C.	4
	STD 1208/90/40/48	Washer, shim ... ..						QR	Shim Steel	C.	4
212	F.180736	Ferrule, at attachment of control column tube to socket						2	S.95.B	C.	DD.2
9876	A.231571	Guard, for feel control knob (Mod. 766) ... Kabelführung						1	—	C.	DD.2
2138	A-61599	Guard, chip at universal guard ... ..						2	—	C.	DD.2
7831	D.206792/3	Guard, chain, front portion, group (Mod. 188) Consisting of:—						1	—	B.	DD.2
	D.206792/1	Cover, front ... ..						1	DTD.610		DD.2
	C.206794	Cover, forward ... ..						1	L.59		DD.2
	AGS 2008/B 1	Nut, anchor ... ..						2	—	C.	
	F.191313	Plate, stop ... ..						1	DTD.610		
	AS 164/405	Rivet ... ..						2	—	C.	
	AS 164/304	Rivet ... ..						2	—	C.	
	AS 163/404	Rivet ... ..						10	—	C.	
7832	D.206792/4	Guard, chain, rear portion, group (Mod. 188) Consisting of:—						1	—	B.	DD.2
	F.191312	Block, distance ... ..						1	LFS.21		
	F.177444	Block, distance ... ..						1	LFS.21		
	F.191311	Block, saddle ... ..						1	LFS.21		
	F.177443	Block, saddle ... ..						2	LFS.21		
	F.177441	Block, saddle ... ..						1	LFS.21		
	F.177445	Block, saddle ... ..						1	LFS.21		
9126	F.204692	Block, saddle (Mod. 188) ... ..						1	Fibre	C.	DD.2
	AS 1242/7C	Bolt, 2 B.A. ... ..						2	—	C.	
	A.177395	Bracket ... ..						1	S.3		
	D.206792/2	Cover, rear ... ..						1	DTD.610		
	C.206793	Cover, rear ... ..						1	L.59		DD.2
	AGS 2008/C1	Nut, anchor ... ..						1	—	C.	
	F.177518	Packing ... ..						1	DTD.610		
	AS 163/304	Rivet ... ..						2	—	C.	
	AS 163/404	Rivet ... ..						10	—	C.	
	AS 164/407	Rivet ... ..						2	—	C.	
	AS 164/409	Rivet ... ..						2	—	C.	
	AS.164/406	Rivet ... ..						4	—	C.	
	AS 164/414	Rivet ... ..						2	—	C.	
	AS 164/415	Rivet ... ..						2	—	C.	
	AS.164/304	Rivet ... ..						2	—	C.	
F-4 Pkt.256	Dunlop-AC.61316	Stuerknüppelgriff vollst.						1			DD.2
	Dunlop-2BAx1"	Jnbuschraube ... ..						2			
	Dunlop-2BAx1/2"	Jnbuschraube ... ..						2			
	Dunlop-AHO.17298	Federscheibe ... ..						4			
	Dunlop-ACM.17353	Bremskabel ... ..						1			DD.1

FLYING CONTROLS—FRONT FUSELAGE

Ref. No.	Part No.	Description	No. Off					Material Specification	M.R. Class of Store	Plate No.
			1	2	3	4	5			
6974	F.180734	Lug, locking	1					DTD.610	C.	
7834	F.212863	Nut, special (Mod. 188)	1					S.95.B	C.	DD.2
	F.168225	Pin, sprocket attachment to socket	2					S.97.B		
	B.178321	Plug-end	1					Stamping		
9508	B.178579	Plug-end	1					S.95.B		
9812	F.231559	Rod, chain connecting (AS.760/84)	1					S.95.B	C.	DD.2
217	F.177524	Shim, attachment of universal fork to control tube	1					—	C.	DD.2
9507	B.178440	Socket, joint	1					S.95.B	C.	DD.1, DD.2
	Dunlop-ACO.7399	Spez.-Schraube	1							
8602	F.178409	Sprocket, at joint socket	1					S.95.B		
1891	F.195967	Sprocket and fork	1					—	C.	DD.2
	A.193485	Gabel	1					—		DD.2
	F.220468	Kell	1					—		DD.2
	A.208523	Tube, control (Mod. 188)	1					T.50		
	A.73025	Tube, distance, at universal fork	1					—		DD.2
	STD 1510/13/139	Tube, distance, $\frac{3}{8}$ " o/d x 20 s.w.g. x 1-39" long	1					T.4		
	STD 1208/90/25/64	Washer, at sprocket and fork	1					Shim Steel	C.	4
	STD 1208/75/33/50	Washer, at attachment of control column tube to socket	1					Shim Steel	C.	DD.2
	STD 1208/75/33/100	Washer, at control column joint socket	1					Shim Steel	C.	DD.2
	STD 532/1	Ferrule	6					S.80	C.	DD.2
	STD 532/1-18	Büchse, Uebermass (8,1 mm)	n.B.							
	A.185082	Housing, aileron torque tube, group	1					—		
223	George/Angus-G.300225	Seal, "Gaco"	1					—	C.	DD.2
	A.180432	Housing, control column crank, group	1					—		
224	George/Angus-G.189125	Seal, "Gaco"	1					—	C.	DD.2
226	B.165970	Lever, rudder, aft of frame 8	1					—	B.	DD.2
235	B.168400	Lever, rudder control	1					—	B.	DD.2
236	B.178822	Lever, elevator	1					—	B.	DD.2
237	B.178823	Lever, elevator	1					—	B.	DD.2
238	B.178824	Lever, elevator	1					—	B.	DD.2
2139	A-53255	Nut, attachment of torque tube to control column	1					S.2	C.	DD.2
1699	F.192050	Piece, distance, for brake relay rod attachment	1					S.1	C.	DD.1
239	F.179016	Piece, distance, at attachment of elevator lever	2					T.4	C.	DD.1
5804	A-53057-S	Pin, attachment of torque tube to control column	1					S.94.B	C.	DD.2
	A-53057-1-S	Pin, 1. Uebermass (19,07 mm)	n.B.							
	A-53057-2-S	Pin, 2. Uebermass (19,09 mm)	n.B.							
241	B.166465	Arm, rudder bar, group	2					—	C.	DD.1
242	F.179017	Bolt, eye adjusting link attachment	2					S.95.B	C.	DD.1
2A/9500419	Ball + Roller-BRT.1.1/16"	Bearing, rudder control spindle...	2					—	B.	
	AS.2209	Bolt, securing pedal at rudder bar arm	2					—		
	STD 325/154	Bolt, attachment of rudder bar links to pedal	2					S.99B	C.	DD.1
Ae.A. Hu-500	6P-F+W-519516	Bolt	1					—	C.	
	STD 1551/2/65	Bolt, adjusting, link attachment to rudder bar arm	2					S.99B	C.	DD.1
4270	F.199878	Bracket	1					—	C.	DD.1
245	F.148388	Bush, rudder control spindle, top	1					B.8	C.	DD.1
246	F.148389	Bush, rudder control spindle, bottom	2					B.8	C.	DD.1
247	F.148387	Cap, rudder control spindle	2					DTD.176A	C.	DD.1
270	A.165668	Lever	1					—	C.	DD.1
249	A.165664	Link, rudder bar, port	1					—	C.	DD.1
250	A.165665	Link, rudder bar, starboard	1					—	C.	DD.1
251	F.178554	Link, rudder bar adjusting	2					S.95B	C.	DD.1
4554	F.202251	Packing	1					Brass	C.	

## FLYING CONTROLS—FRONT FUSELAGE

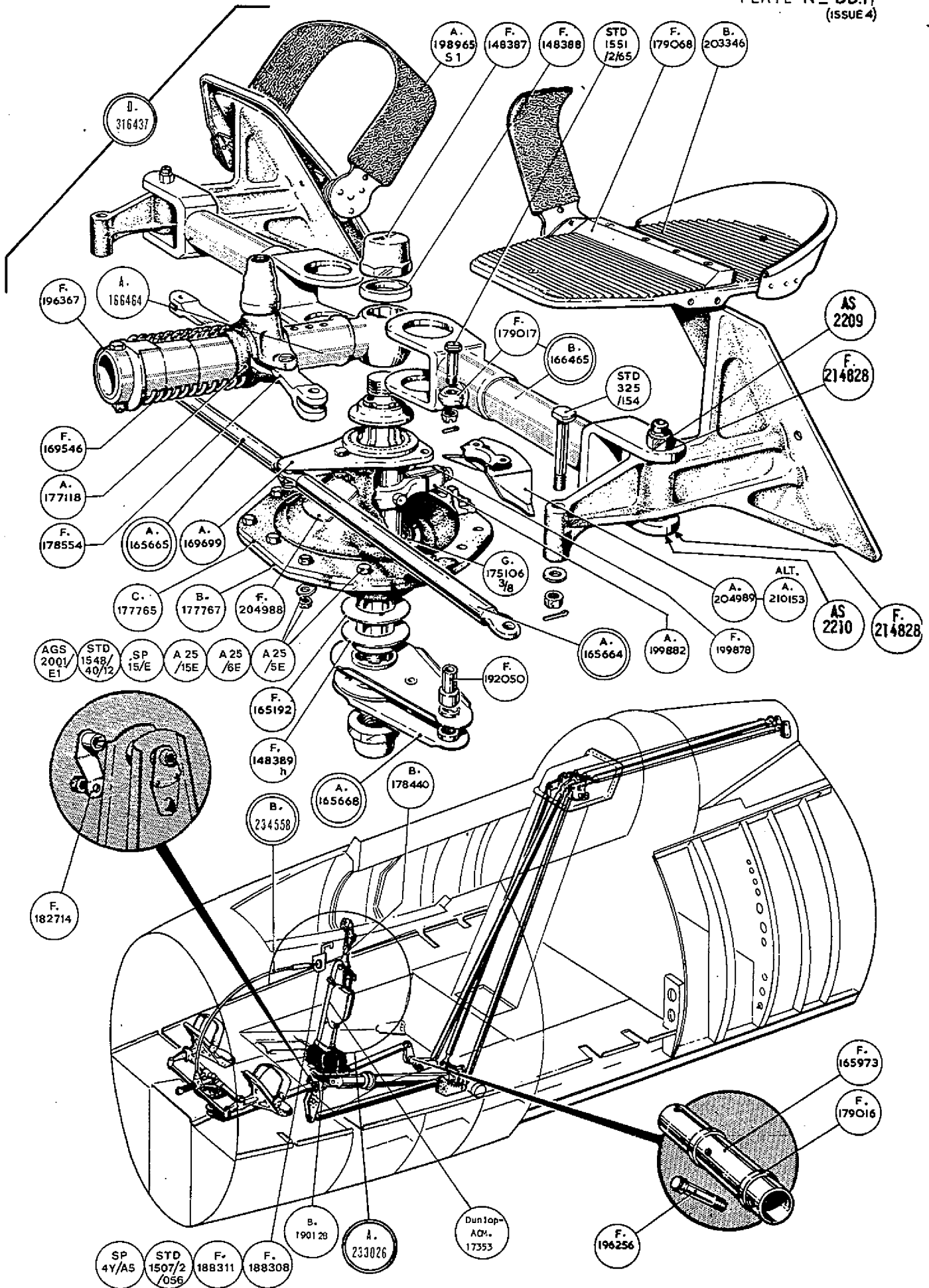
Ref. No.	Part No.	Description	No. Off					Material Specification	M.R. Class of Score	Plate No.	
			1	2	3	4	5				
252	C.177765	Pedestal, top portion ... ..						1	Casting	C.	DD.1
253	B.177767	Pedestal, bottom, portion ... ..						1	Casting	C.	DD.1
	A 25/5E	6kt.-Schraube ... ..						6			DD.1
	A 25/6E	6kt.-Schraube ... ..						3			DD.1
	A 25/15E	6kt.-Schraube ... ..						3			DD.1
	SP 15/E	U-Scheibe ... ..						9			DD.1
	STD 1548/40/12	Spez.-Unterlage ... ..						3			DD.1
	AGS 2001/E1	Sich.-Mutter ... ..						12			DD.1
	F.214828	Büchse ... ..						4	Bronze		DD.1
	AS 2210	Büchse ... ..						2	rostfr.St.		DD.1
	C.203345	Pedal, rudder, group ... ..						2	—	—	
254	F.179068	Heel, bar ... ..						1	LFS.21	C.	DD.1
4767	B.203346	Plate, pedal ... ..						1	—	C.	DD.1
4102	A.198965-S 1	Strap, toe ... ..						1	—	C.	DD.1
257	A.169699	Plate, rudder bar link support ... ..						1	—	C.	DD.1
258	George/Angus-G.175106	Seal, rudder pedestal ... ..						1	—	C.	DD.1
5797	F.204988	Shield, front for pedestal (Mod. 194) ... ..						1	S.84	C.	DD.1
5798	A.204989	Shield, rear for pedestal (Mod. 194) ... .. (Alternative to A.210153)						1	S.84	C.	DD.1
6749	A.210153	Shield, for pedestal ... ..						1	—	C.	
259	F.165192	Shim, at rudder control spindle ... ..						1	DTD.364	C.	DD.1
1927	F.196367	Sleeve, adjusting shaft ... ..						1	DTD.364	C.	DD.1
260	A.177118	Slide, rudder arm adjusting ... ..						1	Stamping	C.	DD.1
261	F.169546	Spring, rudder arm adjusting ... ..						1	Sp. Stl.	C.	DD.1
4273	A.199882	Stop, lever ... ..						1	Stamping	C.	DD.1
	AS 2210	Tube, distance of rudder arm fork ... ..						2	—		
	STD 914/C/22	Washer, special ... ..						3	S.1	C.	4
264	F.178750	Shaft, bearing, control column crank ... ..						1	S.95B	C.	DD.2
265	F.165973	Shaft, torque, aft, control column crank ... ..						1	T.60	C.	DD.1
266	A.178749	Shaft, torque, forward, control column crank ... ..						1	T.60	C.	DD.2
	STD 1208/150/68/50	Shim, at attachment of control column crank to keel member (port)						1	Shim Steel	C.	DD.2
	STD 1208/130/68/50	Shim, for elevator levers, starboard side of keel member						2	Shim Steel		
8493	B.215089	Tube, aileron torque, group (Mod. 457) ... ..						1	—	B.	DD.2
	STD 532/4	Büchse ... ..						8			DD.2
	A 25/22E	6kt.-Schraube ... ..						4			DD.2
	A 5B/ES	6kt.-Mutter ... ..						4			DD.2
	A.215091	Adaptor, splined ... ..						1	S.95B		DD.2
	A 30/12E	6kt.-Schraube ... ..						4	—		DD.2
	A 27/ES	6kt.-Mutter ... ..						4	—		DD.2
	Ball + Roller-BAL.025	Bearing ... ..						1	—	B.	DD.2
2A/9500154	STD 165/S	Ferrule ... ..						4	—		
	F.165984	Guard, chip ... ..						1	DTD.610		DD.2
	F.218110	Guard, chip (Mod. 457) ... ..						1	DTD.610		DD.2
269	B.165987	Housing, bearing ... ..						1	L.53	C.	DD.2
	A.215088	Plug, end (Mod. 457) ... ..						1	S.95B		
277	B.165989	Tube, rudder control ... ..						1	—	B.	DD.2
278	B.165990	Tube, rudder control ... ..						1	—	B.	DD.2
279	B.165991	Tube, elevator control ... ..						1	—	B.	DD.2
1497	F.185083	Washer, for aileron torque tube housing ... ..						1	DTD.560	C.	DD.2
	STD 915/J/14	Washer, at attachment of rudder lever ... ..						1	DTD.610	C.	4

FLYING CONTROLS—FRONT FUSELAGE

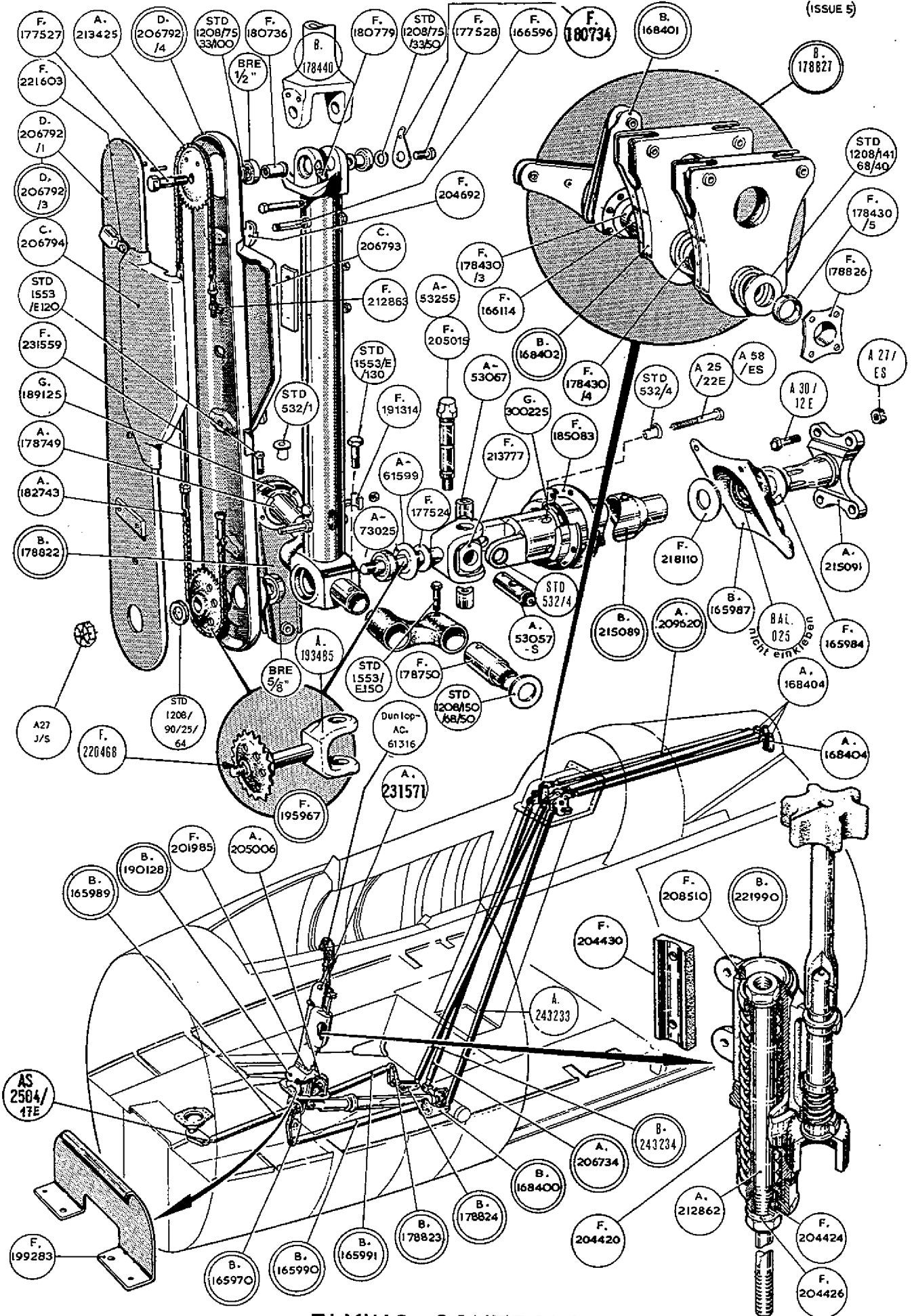
Ref. No.	Part No.	Description	No. Off					Material Specification	M.R. Class of Store	Plate No.
			1	2	3	4	5			
	B.190129	<b>GAITER FOR CONTROL COLUMN, ASSEMBLY</b>	-	-	-	-	-			
4444	F.201985	Clip, control column gaiter attachment ... ..	1				L.72	C.	DD.2	
	STD 1285/8/CC	Connector, earthing ... ..	1				-	C.	4	
1495	B.190128	Gaiter, control column base ... ..	1				-	C.	DD.1, DD.2	
4106	F.199283	Guard, for control column gaiter ... ..	1				L.72	C.	DD.2	
5799	A.205006	Support, for gaiter ... ..	1				L.72	C.	DD.2	
	B.178827	Levers, aft of seat frame, group ... ..	1				-		DD.2	
227	B.168401	Lever, aileron control ... ..	1				-	B.	DD.2	
228	B.168402	Lever, elevator and rudder ... ..	2				-	B.	DD.2	
229	F.166114	Shaft ... ..	1				T.50	C.	DD.2	
230	F.178826	Spool ... ..	2				DTD.364	C.	DD.2	
231	F.178430/3	Tube, distance 1½" o/d × 14 s.w.g. × 4.30" long	1				T.4	C.	DD.2	
232	F.178430/4	Tube, distance 1½" o/d × 14 s.w.g. × .225" long	1				T.4	C.	DD.2	
233	F.178430/5	Tube, distance 1½" o/d × 14 s.w.g. × .155" long	1				T.4	C.	DD.2	
	STD 1208/141/6B/40	Washer ... ..	6				Shim Steel	C.	DD.2	
287	A.168404	Link, idling ... ..	3				-	B.	DD.2	
6201	A.209620	Tube, aileron, elevator and rudder control between frames 14 and 17A, group (Mod. 368)	3				-	B.	DD.2	
6202	A.209621	Fork-end ... ..	1				S.96B	C.		
8488	A.206734	Gestänge für Querruder	1				-	B.	DD.2	
276	A.243233	Gestänge für Seitenruder (Mod. 941)	1				-	B.	DD.2	
	B.243234	Gestänge für Höhensteuer (mit Gewicht) (Mod. 941)	1				-		DD.2	

FLYING CONTROLS—FRONT FUSELAGE

Ref. No.	Part No.	Description					No. Off	Material Specification	M.R. Class of Store	Plate No.
		1	2	3	4	5				
<b>SUMMARY OF STOCK ITEMS</b>										
	A 25/2C	Bolt, 2 B.A.	...	...	...	...	...	—	—	—
	A 25/3C	Bolt, 2 B.A.	...	...	...	...	...	—	—	—
	A 25/13C	Bolt, 2 B.A.	...	...	...	...	...	—	—	—
	A 25/4C	Bolt, 2 B.A.	...	...	...	...	...	—	—	—
	A 25/5E	Bolt, 1/4" B.S.F.	...	...	...	...	...	—	—	—
	A 25/6E	Bolt, 1/4" B.S.F.	...	...	...	...	...	—	—	—
	A 25/15E	Bolt, 1/4" B.S.F.	...	...	...	...	...	—	—	—
	A 30/8E	Bolt, 1/4" B.S.F.	...	...	...	...	...	—	—	—
	A 30/9E	Bolt, 1/4" B.S.F.	...	...	...	...	...	—	—	—
	A 30/10E	Bolt, 1/4" B.S.F.	...	...	...	...	...	—	—	—
	A 30/11E	Bolt, 1/4" B.S.F.	...	...	...	...	...	—	—	—
	A 30/12E	Bolt, 1/4" B.S.F.	...	...	...	...	...	—	—	—
	A 30/14E	Bolt, 1/4" B.S.F.	...	...	...	...	...	—	—	—
	A 30/15E	Bolt, 1/4" B.S.F.	...	...	...	...	...	—	—	—
	A 30/17E	Bolt, 1/4" B.S.F.	...	...	...	...	...	—	—	—
	A 30/27E	Bolt, 1/4" B.S.F.	...	...	...	...	...	—	—	—
	A 30/24J	Bolt, 3/8" B.S.F.	...	...	...	...	...	—	—	—
	A 30/17G	Bolt, 1/8" B.S.F.	...	...	...	...	...	—	—	—
	AS 1242/4C	Bolt, 2 B.A.	...	...	...	...	...	—	—	—
	AS 1242/8C	Bolt, 2 B.A.	...	...	...	...	...	—	—	—
	AS 1248/1C	Bolt, 2 B.A.	...	...	...	...	...	—	—	—
	AS 1248/2C	Bolt, 2 B.A.	...	...	...	...	...	—	—	—
	AS 1248/6C	Bolt, 2 B.A.	...	...	...	...	...	—	—	—
	AS 2504/5E	Bolt, 1/4" B.S.F.	...	...	...	...	...	—	—	—
	AGS.2031/22	Circlip	...	...	...	...	...	—	—	—
	A 16 Y/CS	Nut, 2 B.A.	...	...	...	...	...	—	—	—
	A 16 Y/CP	Nut, 2 B.A.	...	...	...	...	...	—	—	—
	A 16 Y/ES	Nut, 1/4" B.S.F.	...	...	...	...	...	—	—	—
	A 16 Y/JS	Nut, 3/8" B.S.F.	...	...	...	...	...	—	—	—
	A 27/CP	Nut, 2 B.A.	...	...	...	...	...	—	—	—
	A 27/CS	Nut, 2 B.A.	...	...	...	...	...	—	—	—
	A 27/EP	Nut, 1/4" B.S.F.	...	...	...	...	...	—	—	—
	A 27/ES	Nut, 1/4" B.S.F.	...	...	...	...	...	—	—	—
	A 27/ET	Nut, 1/4" B.S.F.	...	...	...	...	...	—	—	—
	A 27/ST	Nut, 1/8" B.S.F.	...	...	...	...	...	—	—	—
	A 27/GTL	Nut, 1/16" B.S.F.	...	...	...	...	...	—	—	—
	A 27/JS	Nut, 3/8" B.S.F.	...	...	...	...	...	—	—	—
	A 58/ES	Nut, 1/4" B.S.F.	...	...	...	...	...	—	—	—
	AGS 572/A	Nut, 1/4" B.S.F.	...	...	...	...	...	—	—	—
	AGS 1148C	Nut, 2 B.A.	...	...	...	...	...	—	—	—
	AGS 2001/C1	Nut, 2 B.A.	...	...	...	...	...	—	—	—
	AGS 2002/C1	Nut, 2 B.A.	...	...	...	...	...	—	—	—
	AGS 2001/E1	Nut, 1/4" B.S.F.	...	...	...	...	...	—	—	—
	AGS 2002/E1	Nut, 1/4" B.S.F.	...	...	...	...	...	—	—	—
	AGS 572/E	Nut, 1/4" B.S.F.	...	...	...	...	...	—	—	—
	SP 21	Nipple, lubricating	...	...	...	...	...	—	—	—
	SP 15C	Washer, 2 B.A.	...	...	...	...	...	—	—	—
	SP 16C	Washer, 2 B.A.	...	...	...	...	...	—	—	—
	SP 15E	Washer, 1/4" B.S.F.	...	...	...	...	...	—	—	—
	SP 16E	Washer, 1/4" B.S.F.	...	...	...	...	...	—	—	—
	SP 15/I	Washer, 1/8" dia.	...	...	...	...	...	—	—	—
	SP 15G	Washer, 1/8" dia.	...	...	...	...	...	—	—	—



FLYING CONTROLS



FLYING CONTROLS

This file was downloaded  
from the RTFM Library.

Link: [www.scottbouch.com/rtfm](http://www.scottbouch.com/rtfm)

Please see site for usage terms,  
and more aircraft documents.

