

SERVICES—FUEL SYSTEM CENTRE FUSELAGE

Ref. No.	Part No.	Description	No. Off					Material Specification	M.R. Class of Score	Plata No.
			1	2	3	4	5			
		FUEL SYSTEM IN CENTRE FUSELAGE, ASSEMBLY								
6519	E.204069	Adaptor, special, at pump connection ...		2			L.65.C	B.	NB. 1+1A	
6520	A.202469	Adaptor, at flow proportioner branch pipe ...		1			L.65.C	B.	NB. 3	
xx →	27F/2226	Saunders-42A10		1			—	A.		
	27F/2881	Saunders-51B12		1			—	A.		
6521	F.208261	Block, mounting, for pressure switch ...		4			LFS.21	C.		
9080	F.219335	Block, mounting, air exhaust pipe at frame 27 (Mod. 545)		1			LFS.21			
1088	A.189332	Bolt, banjo ...		2			S.95	C.	NB. 1+1A	
	STD 677/25	Bolt, 'U.' attaching reducing valve between frames 24-25		4			S.1 & S.3	C.		
7235	B.202033	Bracket, for L.P. cock between frames 30-31 ...		1			L.72	MR/C	NB. 1+1A	
7236	B.206430	Bracket, mounting, for pressure switches between frames 19-20		1			L.72	MR/C	NB. 1+1A	
	B.214325	Bracket, mounting, for 3-Way cock, port (Mod. 459)		1			—	MR	NB. 1+1A	
	B.214326	Bracket, mounting, for 3-way cock, starboard (Mod. 459)		1			—	MR		
x →	7195	F.204795		2			S.3	MR/C		
	5057	F.203591		2			S.3	C.	NB. 3	
	1087	F.185874		2			DTD.215	C.	NB. 1+1A	
	6524	A.202711		2			LFS.21	C.	NB. 1+1A	
	6525	A.201803		7			—	C.	NB. 1+1A	
	2723	F.184931		1			S.94.B	C.	NB. 1+1A	
	6526	F.213079		1			—	C.	NB. 1+1A	
	2724	F.185592		1			DTD.364	C.	NB. 1+1A	
	421	A.185593		10			—	C.	NB. 1+1A	
	2723	F.184931		1			S.94.B	C.	NB. 1+1A	
	6526	F.213079		1			S.95	C.	NB. 1+1A	
	2724	F.185592		1			DTD.364	C.	NB. 1+1A	
	1085	A.185870		2			—	C.	NB. 1+1A	
	2723	F.184931		1			S.94.B	C.	NB. 1+1A	
	6526	F.213079		1			S.95	C.	NB. 1+1A	
		F.184938		1			DTD.364	C.	NB. 1+1A	
	1136	A.186450		13			—	C.	NB. 1+1A	
	2723	F.184931		1			S.94.B	C.	NB. 1+1A	
	6526	F.213079		1			S.95	C.	NB. 1+1A	
	2724	F.185592		—			DTD.364	MR/C	NB. 1+1A	
	6659	A.214175		4			LFS.21	C.		
	A.263786-S	Bride (Ae.A.Hu-FT-670a)		1						
	F.204931	Clip, pressurising pipe attachment to rear spar (Local manufacture)		1			L.72	—		
	F.205150	Clip, reducing valve attachment between frames 35 and 36 starboard (Local manufacture)		1			L.72	—	NB. 1+1A	
	A.205062	Clip, attaching transfer pipe at frame 35 (Local manufacture)		1			L.72	—		
	STD 2045/21/24	Clip, sleeved		3			—			
	STD 2089/59/20	Clip, sleeved		1			—			
	STD 2046/17/26	Clip, sleeved		1			—			
	STD 2046/21/24	Clip, sleeved		1			—			
	STD 2046/42/22	Clip, sleeved		1			—			
	(A.250121	Sicherungsklappe		1						
	(A.250214	Spez.-Bolzen		1						
xx	F+W Pkt.286	(A 27/CS		1						
	Ae.A. 1322	(SP 15/C		1						
	(6F/W-BAMF-F-12011-F4	U-Scheibe		1						
	(SP 9/C6	Sich.-Nadel Ø 2		1						
	(A.203062-S1	Splint		1						
x	(A.203063-S1	Briden-Unterteil links		2					NB.3	
	(6F-F+W-706762	Briden-Unterteil rechts		2					NB.3	
		Schraubensicherung		2						

SERVICES—FUEL SYSTEM CENTRE FUSELAGE

Ref. No.	Part No.	Description	No. Off	Material Specification	M.R. Class of Store	Plate No.
	STD 2046/59/20	Clip, sleeved	1	—		
	STD 2046/67/20	Clip, sleeved	1	—		
	STD 840/20	Clip, recuperator drain pipe (Make from 30B/1433)	1	DTD.610	MR/C	4
	STD 841/28	Clip, 7/16" wide x 22 S.W.G. (Make from 30B/1433)	2	DTD.610	MR/C	4
	STD 841/38	Clip, 7/16" wide x 22 S.W.G. (Make from 30B/1433)	4	DTD.610		4
	STD 841/39	Clip, 7/16" wide x 22 S.W.G. (Make from 30B/1433)	2	DTD.610	—	
	STD 842/53	Clip, 7/16" wide x 22 S.W.G. (Make from 30A/549)	2	S.3	—	
	STD 842/17	Clip, 7/16" wide x 22 S.W.G. (Make from 40A/549)	3	S.3	—	
	STD 850/35	Clip, 7/16" wide x 22 S.W.G.	4	DTD.610	C.	4
	STD 850/50	Clip, 7/16" wide x 22 S.W.G.	2	DTD.610	C.	4
	STD 850/58	Clip, 7/16" wide x 22 S.W.G. (Make from 30B/1433)	10	DTD.610	—	
	STD 850/19	Clip, 7/16" wide x 22 S.W.G. (Make from 30B/1433)	1	DTD.610	—	
	STD 850/20	Clip, 7/16" wide x 22 S.W.G. (Make from 30B/1433)	1	DTD.610	MR/C	4
	STD 851/20	Clip, 7/16" wide x 22 S.W.G. x 2-0" long	1	DTD.610		
	STD 851/47	Clip, 7/16" wide x 22 S.W.G. (Make from 30B/1433)	4	DTD.610	MR/C	4
	STD 851/90	Clip, 7/16" wide x 22 S.W.G. (Make from 30B/1433)	1	DTD.610	—	
	STD 851/48	Clip, 7/16" wide x 22 S.W.G. (Make from 30B/1433)	1	DTD.610	—	
	Saunders — 216 CH80-P3	Cock, tank selector, port	1	—	A.	
	Saunders — 216 CJ80-P3	Cock, tank selector, starboard	1	—	A.	
1086	F.185873	Collar, half	4	DTD.364	C.	NB.1+1A
1729	A.192904	Connection, tank pressurising, group	1	—	B.	NB.2
6529	King-C.5338	Coupling, flexible, 1 1/2" B.S.P	2	—	B.	NB.1, NB.1A
27F/2596	Fligt-Ref. B.0724140	Cover, duct	1	—	C.	
27F/2227	Avery-Hardoll- F C.110	Coupling, refuelling, group (Alternative to C.0724000/1)	1	—	A.	NB.1, NB.1A
27F/2228	Avery-Hardoll- F C.109	Cover, duct, group	1	—	C.	
27F/2599	Avery-Hardoll- F C.339	Ring, sealing	1	—	C.	
F+W Pkt.128 Ae.A. 410	THS 180 Mk.3 PP 150 b AS 195/604	Kettenanschlussblech Panzerkette lg. = 25cm Niet	1 1 1			NB.1A NB.1A

SERVICES-FUEL SYSTEM CENTRE FUSELAGE

Ref. No.	Part No.	Description					No. Off	Material Specification	M.R. Class of Store	Plate No.
		1	2	3	4	5				
27F/2327	Flight Ref. FRS.110/H	Connector, pipe, 1" B.S.P.					2		A	NB. 1A
	Flight Ref. FRS.54/H	Gummidichtung					1			
	Flight Ref. FRS.109/H	Kupplungskorb					1			
	Flight Ref. FRS.111/H	Kupplungs-Ueberwurfmutter					1			
	6F-BAMF-105/H	Sich.-Ring aussen					1			
27F/2330	Flight Ref. FRS.110/L	Connector, pipe, 1 3/4" B.S.P.					6		A	NB. 1A
	Flight Ref. FRS.54/L	Gummidichtung					1			
	Flight Ref. FRS.109/L	Kupplungskorb					1			
	Flight Ref. FRS.111/L	Kupplungs-Ueberwurfmutter					1			
	6F-BAMF-107/L	Sich.-Ring aussen					1			
27F/2336	Flight Ref. FRS.185/L	Wärmeschutz-Verschaltung					6			
27F/2329	Flight Ref. FRS.110/K	Connector, pipe, 1/2" B.S.P.					1		A	NB. 1A
	Flight Ref. FRS.54/K	Gummidichtung					1			
	Flight Ref. FRS.109/K	Kupplungskorb					1			
	Flight Ref. FRS.111/K	Kupplungs-Ueberwurfmutter					1			
	6F-BAMF-106/K	Sich.-Ring aussen					1			
27F/2423	Flight Ref. FRS.185/K	Wärmeschutz-Verschaltung					1			

SERVICES—FUEL SYSTEM CENTRE FUSELAGE

Ref. No.	Part No.	Description	No. Off	Material Specification	M.R. Class of Store	Plate No.
	AS 4760-S	Drain, water/sediment (AS. 840/65)	8	—	C.	
6530	F.205063	Fairlead, for pressure pipe at frame 29 aft	2	LFS.21	C.	NB.3
6531	F.203312	Fairlead, for external charging and pressurising branch pipes at frame 36	6	LFS.21	C.	NB.1+1A
6532	A.203228	Fairlead, for transfer pipe at frame 32	2	LFS.21	C.	NB.3
8351	F.216492	Fairlead, for transfer pipe (Mod. 459)	2	LFS.21	C.	
8352	F.216493	Fairlead, for transfer pipe (Mod. 459)	2	LFS.21	C.	
X — F+M Pkt. 276 A.A. 1055	27F/2241	Saunders-A.102/3 F.235139 Std 1231/3	Handle, for defuelling cock	1	—	C.
			Label, instruction, for fuelling cock (Mod. 2410) ...	1	L.72	MR/C NB.2
			Lug, locking, at non-return valves in stub wing and at frame 36	6	S.3	C. 4
	C.203026	MOUNTING, FOR FLOW PROPORTIONER, ASSEMBLY		—	—	
6533	F.205949	Bolt, attaching flow proportioner to bracket ...	1	S.95.B	C.	
	A.215324	Bracket, support, at frame 22	1	S.84, T.26	C.	
8034	F.202967	Link, at frame 23	2	L.72	C.	
8374	F.215325	Washer, special, for support bracket	1	S.3	C.	
8375	F.215326	Washer, special, for support bracket	1	S.3	C.	
	B.190411	MOUNTING, FOR REFUELLING COUPLING, ASSEMBLY		—	—	
	A.201806	Label	1	Alum.	C.	
1061	C.189254	Mounting	1	S.3	C.	NB.1+1A
1081	F.188372	Nipple	1	S.1	C.	
1082	F.188057	Nipple	4	S.1	C.	
5067	F.190837	Nut, retaining, at vapour release connection, forward tanks	2	DTD.364	C.	NB.3
	F.205061	Packing, for "U" bolt at reducing valve, frame 24 (Local manufacture)	2	LFS.21	—	
7241	F.203498	Packing, for clip at transfer and pressure pipes between frames 25-26	1	LFS.21	MR/C	
	Std 1938/3	Packing, pressurising pipe frame 27 (Local manufacture)	1	Plastic		
	Std 1939/3	Packing, reducing valve frame 35 (Local manufacture)	1	Plastic		
	Std 1939/4	Packing, transfer pipe, frame 35 (Local manufacture)	QR	Plastic		
	Std 1939/6	Packing, pressurising pipe, frame 33 (Local manufacture)	QR	Plastic		
1722	C.188051/16	Pipe, pressurising, connection at frame 38 to bulkhead connection, frames 39, port	1	DTD.253	C.	
1723	C.188051/17	Pipe, pressurising, connection at frame 38 to bulkhead connection frame 39, starboard	1	DTD.253	C.	
6539	C.200368	Pipe, delivery, four-day at flow proportioner ...	1	DTD.253	B.	NB.1+1A
9103	C.214000	Pipe, refuelling branch, from connection at frame 26 to refuelling valves at frames 27 and 29, port	1	DTD.253	B.	NB.1A
9104	C.214001	Pipe, refuelling branch, from connection at frame 26 to refuelling valves at frames 27 and 29, starboard	1	DTD.253	B.	NB.1A
	OR 4150	Dichtung (No Ring)	1	Gummi		NB.3
	6F-F+W-515645	U-Scheibe	1			NB.3
	A 33/A14	Sk.-Schraube	2			NB.3
	AGS 2001/A1	Sich.-Mutter	2			NB.3
	6F-F+W-515646	Dichtung, for front tank vent extension at frame 25	1	Kork		NB.3

SERVICES—FUEL SYSTEM CENTRE FUSELAGE

Ref. No.	Part No.	Description					No. Off	Material Specification	M.R. Class of Store	Plate No.
		1	2	3	4	5				
6590	C.201517					Pipe, transfer branch, frame 30 to non-return valve at frame 27, port	1	DTD.253	B.	NB.1A
6589	C.201518					Pipe, transfer branch, frame 30 to non-return valve at frame 27, starboard	1	DTD.253	B.	NB.1+1A
6540	C.201520					Pipe, delivery branch, four-way pipe to frame 27, port	1	DTD.253	B.	NB.1+1A
6596	C.201521					Pipe, transfer branch, selector cock, frame 26 to front tank, port	1	DTD.253	B.	NB.1+1A
6595	C.201522					Pipe, transfer branch, selector cock, frame 26 to front tank starboard	1	DTD.253	B.	NB.1A
6578	C.201523					Pipe, refuelling branch, from connection between frames 25-26 to refuelling valve, starboard	1	DTD.253	B.	NB.1A
6574	C.201525/3					Pipe, recuperator charging, recuperator to four-way pipe, port	1	DTD.253	B.	NB.1A
6600	C.201525/4					Pipe, vent, at 'Y' piece pipe, between frames 25-26	1	DTD.253	B.	NB.1A
6541	C.201525/6					Pipe, delivery, frame 27 to L.P. cock, frames 30-31, port	1	DTD.253	B.	NB.1+1A
6542	C.201525/7					Pipe, delivery, between frames 31-32, port	1	DTD.253	B.	NB.1+1A
6584	C.201525/9					Pipe, transfer, frame 37 to 35, port	1	DTD.253	B.	NB.1A
6585	C.201525/10					Pipe, transfer, frame 37 to 34, starboard	1	DTD.253	B.	NB.1+1A
6582	C.201525/11					Pipe, transfer, transport joint to frame 37, port ...	1	DTD.253	B.	NB.1+1A
6583	C.201525/12					Pipe, transfer, transport joint to frame 37, starboard	1	DTD.253	B.	NB.1+1A
6592	C.201525/15					Pipe, transfer, elbow at tank selector cock, frames 26-27, port	1	DTD.253	B.	NB.1A
6591	C.201525/16					Pipe, transfer, elbow at tank selector cock, frames 26-27, starboard	1	DTD.253	B.	NB.1A
6586	C.201525/19					Pipe, transfer, frame 35 to 32, port	1	DTD.253	B.	NB.1A
6588	C.201525/21					Pipe, transfer, frame 32 to 30, port	1	DTD.253	B.	NB.1A
7246†	C.201525/22					Pipe, pressure tapping, from tee-piece to refuelling branch pipe at frame 26	1	DTD.253	MR/C	NB.1A
7244†	C.201525/23					Pipe, pressure tapping, wing tank pressure relief valve to tee-piece frame 26, port	1	DTD.253	MR/C	NB.1A
7245†	C.201525/24					Pipe, pressure tapping wing tank pressure relief valve to tee-piece, frame 26, starboard	1	DTD.253	MR/C	NB.1A
6598	C.201525/25					Pipe, vent, connecting 'Y' piece pipes at frames 26	1	DTD.253	B.	NB.1A
6537	C.201525/26					Pipe, delivery, front tank to flow proportioner, port	1	DTD.253	B.	NB.1+1A
6538	C.201525/27					Pipe, delivery, front tank to flow proportioner, starboard	1	DTD.253	B.	NB.1+1A
6543	C.201525/28					Pipe, delivery, between frames 31-32 to flexible coupling, starboard	1	DTD.253	B.	NB.1+1A
6544	C.201525/29					Pipe, delivery, flexible coupling to flexible coupling, frames 32-34, starboard	1	DTD.253	B.	NB.1+1A
6587	C.201525/30					Pipe, transfer, frame 34 to 30, starboard	1	DTD.253	B.	NB.1+1A
6599	B.201526					Pipe, vent, 'Y' piece between frames 25-26 connecting suction and pressure relief valves	1	DTD.253	B.	NB.1+1A
6549	C.202088/6					Pipe, pressurising, external charging between frames 35-36	1	DTD.253	B.	NB.1+1A
6560	C.202088/7					Pipe, pressurising, reducing valve branch pipes to connection at frame 38, port	1	DTD.253	B.	NB.1+1A
6561	C.202088/8					Pipe, pressurising, reducing valve branch pipes to connection at frame 38, starboard	1	DTD.253	B.	NB.1+1A

† For details see Piping Chart - .

SERVICES—FUEL SYSTEM CENTRE FUSELAGE

Ref. No.	Part No.	Description	No. Off	Material Specification	M.R. Class of Store	Plate No.
6572	C.202088/20	Pipe, pressurising, at wing tank pressure relief valve, port	1	DTD.253	B.	NB.1A
6573	C.202088/21	Pipe, pressurising, at wing tank pressure relief valve, starboard	1	DTD.253	B.	NB.1A
6556†	C.202088/22	Pipe, pressurising, branch at reducing valve to inverted flight recuperator, port	1	DTD.253	C.	NB.1A
6557†	C.202088/23	Pipe, pressurising, branch at reducing valve to inverted flight recuperator, starboard	1	DTD.253	C.	NB.1A
7257†	C.202088/26	Pipe, vent, from 'Y' piece, to front tank vapour release valve connection, port	1	DTD.253	MR/C	NB.1A
7258†	C.202088/27	Pipe, vent, from 'Y' piece to front tank vapour, release valve connection, starboard	1	DTD.253	MR/C	NB.1A
6534†	C.202088/29	Pipe, air exhaust, at front tank inverted flight recuperator, port	1	DTD.253	C.	NB.1A
7254†	C.202088/31	Pipe, recuperator to water sediment drain, port	1	DTD.253	MR/C	NB.1A
7255†	C.202088/32	Pipe, recuperator to water sediment drain, starboard	1	DTD.253	MR/C	NB.1A
7256†	C.202088/33	Pipe, recuperator union to water sediment drain, port	1	DTD.253	MR/C	NB.1A
7247†	C.202088/37	Pipe, pressure balance, from refuelling branch pipe at frame 26 to selector cock, transfer branch pipe	1	DTD.253	MR/C	NB.1A
7250†	C.202088/38	Pipe, pressure, in stub wing branch pipe to pressure switch on diaphragm 'D,' port	1	DTD.253	MR/C	NB.1A
7251†	C.202088/39	Pipe, pressure, in stub wing branch pipe to pressure switch on diaphragm 'D,' starboard	1	DTD.253	MR/C	NB.1A
7248†	C.202088/41	Pipe, pressure, from delivery pipe to pressure switch between frames 20-21, port	1	DTD.253	MR/C	NB.1A
7249†	C.202088/42	Pipe, pressure, from delivery pipe to pressure switch between frames 20-21, starboard	1	DTD.253	MR/C	NB.1A
x	6F-BAMF-C-12069	Pipe, drain, fuel booster pump front tank, port ...	1	L.67	MR/C	NB.1+1A
	6F-BAMF-C-12070	Pipe, drain, fuel booster pump front tank, starboard	1	L.67	MR/C	NB.1+1A
6545†	C.202088/48	Pipe, drain, water/sediment front tank, port ...	1	DTD.253	C.	NB.1+1A
6546†	C.202088/49	Pipe, drain, water/sediment front tank, starboard ...	1	DTD.253	C.	NB.1+1A
7252†	C.202088/50	Pipe, pressure, transfer pipe to pressure switch at frame 29, port	1	DTD.253	MR/C	NB.1A
7253†	C.202088/51	Pipe, pressure, transfer pipe to pressure switch at frame 29, starboard	1	DTD.253	MR/C	NB.1A
7863	C.202088/54	Pipe, pressurising, conn. to conn. (Mod. 472) ...	2	DTD.253	C.	NB.1+1A
6558	C.202202	Pipe, pressurising branch, at reducing valve to frame 35, port	1	DTD.253	B.	NB.1A
6559	C.202203	Pipe, pressurising branch, at reducing valve frame 35, starboard	1	DTD.253	B.	NB.1A
6555	C.202208	Pipe, pressurising branch, at reducing valve, frame 24	1	DTD.253	B.	NB.1A
		† For details see Piping Chart.				
x	F+W Pkt.406 Ae.A. 1432	6F-BAMF-C-12068-R2 6F-BAMF-C-12068-R1 A 25/1C SP 15/C AGS 2001/C1 NB 1072	Trichter, links Trichter, rechts 6 kt.-Schraube U-Scheibe Sich.-Mutter Niet 3 x 6	1 1 4 4 4 2	742.4	NB.1A NB.1A

SERVICES—FUEL SYSTEM CENTRE FUSELAGE

Ref. No.	Part No.	Description	No. Off	Material Specification	M.R. Class of Score	Plate No.
6550†	B.203411/2	Pipe, pressurising, between frames 32-35	1	DTD.253	C.	NB.1A
6551†	B.203411/3	Pipe, pressurising, between frames 29-32	1	DTD.253	C.	NB.1A
6552†	B.203411/4	Pipe, pressurising, between frames 26-29	1	DTD.253	C.	NB.1A
6553†	B.203411/5	Pipe, pressurising, at frame 26	1	DTD.253	C.	NB.1A
6554†	B.203411/6	Pipe, pressurising, reducing valve at frame 24 to connection at frame 26	1	DTD.253	C.	NB.1A
6575	B.209656	Pipe, refuelling, from refuelling coupling valve to connection frames 25-26, port	1	DTD.253	B.	NB.1A
6597	A.212046	Pipe, vent, 'Y' piece connecting wing tank pressure relief valves	1	DTD.253	B.	NB.1+1A
6577	A.212532	Pipe, refuelling branch, between frames 25-26 ...	1	DTD.253	B.	NB.1A
6594	B.214125	Pipe, transfer branch, non-return valve to wing connection at frame 26, port	1	STD.253	B.	NB.1A
6593	B.214126	Pipe, transfer branch, non-return valve to wing connection at frames 26, starboard	1	DTD.253	B.	NB.1A
6576	B.214127	Pipe, refuelling branch, from connection to refuelling valve and aero-cock frames 25-26	1	DTD.253	B.	NB.1+1A
9071†	B.219014/1	Pipe, air, exhaust at reducing valve, frame 35, port... (Mod. 545)	1	DTD.253	C.	NB.1+1A
†	B.219014/2	Pipe, air, exhaust, joint to joint, port (Mod. 545) ...	1	DTD.253		NB.1A
9072†	B.219014/3	Pipe, air, exhaust at reducing valve frame 35, starboard (Mod. 545)	1	DTD.253	C.	NB.1+1A
†	B.219014/4	Pipe, air, exhaust, joint to joint, starboard (Mod. 545)	1	DTD.253		NB.1+1A
†	B.219014/5	Pipe, air, exhaust, joint to 'Y' piece, starboard (Mod. 545)	1	DTD.253		NB.1A
9073†	B.219014/6	Pipe, air, exhaust, joint to 'Y' piece, port (Mod. 545)	1	DTD.253	C.	NB.1A
9074†	B.219014/7	Pipe, air exhaust, 'Y' piece (Mod. 545)	1	DTD.253	C.	NB.1A
9075	B.219014/8	Pipe, air exhaust, boss to reducing valve at frame 24 (Mod. 545)	1	DTD.253	C.	NB.1A
9076	B.219014/9	Pipe, vent, branch, at front tank inverted flight recuperator, starboard (Mod. 545)	1	DTD.253	C.	NB.1+1A
9069	B.219228	Pipe, vent, from connection at frame 25, to atmosphere (Mod. 545)	1	DTD.253	C.	NB.1A
6603	F.203076	Plate, sealing, for delivery pipe at frame 30	2	LFS.21	C.	
6604	F.203077	Plate, sealing, for transfer pipe at frame 30	2	LFS.21	C.	
9077	F.219341	Plate, sealing	2	LFS.21	C.	
9078	F.219336	Plate, sealing air exhaust pipes at frame 30 (Mod. 545)	2	LFS.21		
Ae.A.Bu-FT-670a 4644	F.265791	Plate, clamp, for transfer pipe at frame 32	2	DTD.610	C.	NB.2
	A.203497	Plate, blanking, on front tanks (Local manufacture)...	2	L.72		
27F/2602	Rotol-FFP 2/2	Proportioner, flow	1	—		
	SPE 10306	Gasket, between pump and base plate	2	—		
27F/2932	SPE 3994	Recuperator, inverted flight, R.C.38A, Mk. 5-08 ...	2	—	A.	
5UE/6228	SPE 2009 Mk.5	Pump, fuel booster (Mod. 914)	2			NB1, NB.1A
	SPE 11652	Grundplatte zu Quellenpumpe Piping Chart.	2			NB.1
		† For details see Piping Chart.				

SERVICES—FUEL SYSTEM CENTRE FUSELAGE

Ref. No.	Part No.	Description	No. Off					Material Specification	M.R. Class of Score	Place No.	
			1	2	3	4	5				
270A/383	Dowty - GD.1309/27	Ring, sealing						2	—	C.	NB.1+1A
5099	F.192028	Ring, sealing, at vapour release connection						2	Rubber	C.	NB.3
270A/379	Dowty - GD.1309/21	Ring, sealing, 1" B.S.F.						2	—	C.	
270A/360	Dowty - GD.1308/1	Ring, sealing, "O" Type 1½" B.S.P.						7	—	C.	
270A/361	Dowty - GD.1308/2	Ring, sealing, "O" Type 1½" B.S.P.						10	—	C.	
270A/381	Dowty - GD.1309/25	Ring, sealing, "O" type 1½" B.S.P.						13	—	C.	
270A/152	Dowty - GD.1307/K	Seal, bonded, 1½" B.S.P.						2	—	C.	NB.1+1A
270A/147	Dowty - GD.1307/C	Seal, bonded, ¾" B.S.P.						3	—	C.	
270A/144	Dowty - GD.1307/A	Seal, bonded, ¾" B.S.P.						16	—	C.	
270A/139	Dowty - GD.1307/3	Seal, bonded						12	—	C.	
270A/145	Dowty - GD.1307/B	Seal, bonded						5	—	C.	
270A/146	Dowty - GD.1307/BB	Seal, bonded						4	—	C.	
6606	A.201802	Sleeve, at pump connection						2	L.65.C	C.	NB.1+1A
5CW/5390	Thermal-Contr.- TP.5250	Switch, pressure						2	—	A.	
5CW/5913	Thermal-Contr.- TP.1200	Switch, pressure (Mod. 476)						4	—	A.	
	D.201703	TANKS, FORWARD, INSTALLATION, ASSEMBLY						—	—		
6A/4315	Smiths-JM14	Box, terminal, contents gauge						2	—	B.	
5101	B.190833	Connection, vapour release						2	DTD.364	C.	NB.3
1186	B.181004	Connection, vent						2	DTD.364	C.	NB.1A
1127	F.181002	Plate, locking						4	DTD.610	C.	NB.2
1124	A.169270	Plate, mounting, refuelling valve						2	DTD.610	C.	NB.2
1125	F.170684	Piece, distance						8	DTD.364	C.	NB.2
5CW/6001	Marston-CM.3467 Flight-Ref. 3504100/47	Ring, packing (supplied with Marston Tanks) Switch, fuel level (Mod. 496)						2 2	— —	A. A.	
	B.215810	Shield, group						1	—	MR	
	F.215812	Plug						1	L.65.C	MR	
	F.215813	Spacer						1	L.65.3	MR	
	F.219141	Washer, sealing						3	DTD.560	MR	

SERVICES—FUEL SYSTEM CENTRE FUSELAGE

Ref. No.	Part No.	Description	No. Off					Material Specification	M.R. Class of Score	Plate No.
			1	2	3	4	5			
	—	TANKS (SEE SECTION Q)								
	Marston - CM.2930	Washer , joint (supplied with Marston Tanks) ...		2			—		NB.3	
1126	F.170685	Washer , special		8			DTD.610	C	NB.2	
9647	F.226366	Washer , sealing		2			—			
9648	F.226367	Washer , sealing		2			—			
8350	F.214324	Thimble , for 3-way cock mounting (Mod. 459) ...		6			S.1	C.		
	Std 1509/12/025	Tube , distance		1			T.4			
	Std 1509/23/070	Tube , distance at air exhaust pipe fixing frame 29 ...		1			T.4			
	Std 1509/23/076	Tube , distance, $\frac{3}{8}$ " i/d \times $1\frac{1}{8}$ " o/d \times 0.76" long ... (Make from 30B/556)		1			T.4			
1734	A.189594	Union , bulkhead, $\frac{3}{8}$ " B.S.P., for pressurising pipes at frame 39		2			DTD.364	C.	NB.2	
6607	F.204590	Union , restrictor, at branch transfer pipe, front tank, port		1			—	B.	NB.2	
27F/3043	Flight Ref. C.1117000/6 A	Valve , refuelling, Mk. 17 (Mod. 464)		4			—	A.		
27F/3044	Flight Ref. C.1117000/6 B	Valve , refuelling, Mk. 17 (Mod. 464)		2			—	A.		
27VB/5143	Hymatic-C.51886	Valve , pressure reducing ... (PS 48/8)		1			—	A.		
1071	A.186567	Valve , non-return, group		4			—	B.	NB.2	
F+W Ae. Pkt. Hu 460	Saunders-708AA/25/B 6F-SK-F+W-14420/1 NB 1073	Valve , non-return, pressurising Könische Leiste Flachrund-Niet 4x16 742,4		3 1 6			—	A.		
x 9713	B.225865-S3 C.266331	Valve , pressure relief, group (Mod. 694) Valve , vapour release, group		2 2			— —	A. B.	NB.3 NB.3	
x F+W Pkt.367 Ae.A. 1276	6F-F+W-706762 VSM 12760/DIN 94	Spez.-Schraubensicherung Splint: 4 x 28 kad,		2 4			— —	— —		

SERVICES—FUEL SYSTEM CENTRE FUSELAGE

Ref. No.	Part No.	Description	No. Off	Material Specification	M.R. Class of Store	Plate No.
8137	B.217334	Valve, suction and pressure relief, group (Mod. 564)	2	—	A.	NB.2
27VB/4896 9081	Hymatic-C.51642 C.218432 STD 1547/24/12	Valve, pressure reducing ..(PS 48/12) Vent, extension, front tank (Mod. 545) Washer, profile	2 1 4	— S.3 DTD.610	A. C. —	NB.3 4
9656	A.226376 STD 1547/26/14	Washer, sealing, at blanking plate on front tanks Washer, packing, reducing valve securing bolt, star-board	2 2	DTD.1177 & L.72 DTD.610	C. C.	NB.2 4
9649	F.226368	Washer, sealing, transfer pipe to tank	2	DTD.1177 & L.72	C.	NB.3
9658	A.226378	Washer, sealing, at cover plate	2	DTD.1177 & L.72	C.	NB.3
6608	F.201934	Washer, sealing, at front tank recuperator connection to delivery branch pipe	2	D.75	C.	NB.3
F+W Pkt.276 Ae.A. 1055	8353 F.216941 6F-F+W-515646 STD 915/C/24 B.208250	Washer, for 3-way cock mounting (Mod. 459) ... Washer, sealing at vent pipe to atmosphere frame 25 (Mod. 545) Washer	6 1 2	L.72 DTD.1177 & L.72 DTD.364	C. C. C.	4
		WING-FUSELAGE CONNECTION, ASSEMBLY	—	—		
8131	F.207610	Bolt, 2 B.A., at main spar connector	12	S.99.B	C.	
421	A.185593	Clamp, pipe, connection, group	2	—	C.	NB.1+1A
2723	F.184931	Bolt, eye	1	S.94.C	C.	NB.1+1A
2724	F.185592	Washer	1	DTD.364	C.	NB.1+1A
5059	A.186451	Clamp, pipe, connection, group	2	—	C.	
2723	F.184931	Bolt, eye	1	S.94.B	C.	NB.1+1A
2724	F.185592	Washer	1	DTD.364	C.	NB.1+1A

SERVICES—FUEL SYSTEM CENTRE FUSELAGE

Ref. No.	Part No.	Description					No. Off	Material Specification	M.R. Class of Store	Place No.	
		1	2	3	4	5					
27F/2330	STD 850/58	Clip, $\frac{7}{16}$ " x 22 S.W.G. (Make from 30B/1433) ...					6	DTD.610	—		
	STD 851/30	Clip, $\frac{7}{16}$ " x 22 S.W.G. (Make from 30B/1437) ...					1	DTD.610	—		
	Flight-Ref. FRS.110/L	Connector, pipe $1\frac{3}{4}$ " B.S.P. ...					4	—	A.		
	Flight Ref. FRS. 54/L	Gummidichtung					1				
	Flight Ref. FRS. 109/L	Kupplungskorb					1				
	Flight Ref. FRS. 111/L	Kupplungs-Ueberwurfmutter					1				
	6F-BAMF-107/L	Sich.-Ring aussen					1				
	STD 1939/1	Packing, ...					3	LFS.21	C.	5	
	8050	A.214304	Pipe, branch, to pressure relief valve (Mod. 459)					2	DTD.253	B.	NB.1+1A
	8048	B.214302	Pipe, branch, port (Mod. 459) ...					1	DTD.263	B.	NB.1+1A
8049	B.214303	Pipe, branch, starboard (Mod. 459) ...					1	DTD.253	B.		
6611	C.202205	Pipe, branch, port ...					1	DTD.253	B.	NB.1+1A	
6612	C.202206	Pipe, branch, starboard ...					1	DTD.253	B.		
6613	C.202088/18	Pipe, branch, port ...					1	DTD.253	B.	NB.1+1A	
9096	C.202088/56	Pipe, branch, starboard ...					1	DTD.253	B.		
6094	A.208096	Pipe, stub ...					2	DTD.253	B.		
8051†	C.201525/31	Pipe, front spar to connection, port (Mod. 459)					1	DTD.253	B.	NB.1+1A	
8052†	C.201525/32	Pipe, front spar to connection, starboard (Mod. 459)					1	DTD.263	B.		
27QA/379	Dowty-GD.1309/21	Ring, sealing ...					2	—	C.		
27QA/380	Dowty-GD.1309/23	Ring, sealing ...					4	—			
27QA/361	Dowty-GD.1308/2	Ring, sealing ...					4	—	C.		
27QA/145	Dowty-GD.1307/B	Seal, bonded, $\frac{1}{4}$ " B.S.P. ...					2	—	C.		
27QA/144	Dowty-GD.1307/A	Seal, bonded, $\frac{1}{4}$ " B.S.P. ...					4	—	C.		
27QA/151	Dowty-GD.1307/J	Seal, bonded ...					2	—			
	STD 1703/6/C	Screw, at refuelling pressure relief valve ...					8	S.95.B	C.	5	
8348	A.214274	Sleeve, centre (Mod. 459) ...					2	L.65.C	B.		
8349	A.214240	Sleeve, outer (Mod. 459) ...					2	L.65.C	B.		
8129	B.211551	Valve, refuelling, pressure relief, group (Mod. 557)					2	—	B.	NB.3	

† For details see Piping Chart.

SERVICES—FUEL SYSTEM CENTRE FUSELAGE

Ref. No.	Part No.	Description					No. Off	Material Specification	M.R. Class of Store	Plate No.
		1	2	3	4	5				
SUMMARY OF STOCK ITEMS										
	AGS.1129/A	Body,	banjo,	1/2"	B.S.P.
	AGS.1129/B	Body,	banjo,	1/2"	B.S.P.
	AGS.1129/BB	Body,	banjo,	3/16"	B.S.P.
	AGS.1135/A	Bolt,	banjo,	1/2"	B.S.P.
	AGS.1135/B	Bolt,	banjo,	1/2"	B.S.P.
	AGS.1136/B	Bolt,	banjo,	1/2"	B.S.P.
	AGS.1242/2B	Bolt,	4	B.A.
	AS.1248.2C	Bolt,
	AGS.1252/2C	Bolt,	2	B.A.
	A25.1B	Bolt,	4	B.A.
	A25.2B	Bolt,	4	B.A.
	A25.3B	Bolt,	4	B.A.
	A25.4B	Bolt,	4	B.A.
	A25.1C	Bolt,	2	B.A.
	A25.2C	Bolt,	2	B.A.
	A25.3C	Bolt,	2	B.A.
	A25.4C	Bolt,	2	B.A.
	A25.5C	Bolt,	2	B.A.
	A25.6C	Bolt,	2	B.A.
	A25.7C	Bolt,	2	B.A.
	A25.8C	Bolt,	2	B.A.
	A25.9C	Bolt,	2	B.A.
	A25.10C	Bolt,	2	B.A.
	A25.12C	Bolt,	2	B.A.
	A.25.17C	Bolt,	2	B.A.
	A25.36C	Bolt,	2	B.A.
	A25.4E	Bolt,	3/4"	B.S.F.
	AGS.1104/A	Cone,	adaptor
	AGS.1118/B	Cone,	tee-rail
	AS.3360.B5B	Lead,	earthing
	AS.3360.B5C	Lead,	earthing
	AS.3360-C6C	Lead,	earthing
	AGS.1142/C	Nipple
	AGS.1142/D	Nipple
	AGS.1142/E	Nipple
	AGS.1142/F	Nipple
	AGS.1142/H	Nipple
	AGS.1142/J	Nipple
	AGS.1142/K	Nipple
	AGS.1107/H	Nipple
	AGS.1170/C	Nipple
	AS.1170/D	Nipple
	AGS.1170/E	Nipple
	AGS.1170/F	Nipple
	AGS.1170/J	Nipple
	AGS.1170/K	Nipple

SERVICES—FUEL SYSTEM CENTRE FUSELAGE

Ref. No.	Part No.	Description					No. Of	Material Specification	M.R. Class of Store	Plate No.				
		1	2	3	4	5								
SUMMARY OF STOCK ITEMS														
	AGS.2001/B1	Nut,	4	B.A.	-	-	-	-
	AGS.2002/B1	Nut,	4	B.A.	-	-	-	-
	AGS.2001/C1	Nut,	2	B.A.	-	-	-	-
	AGS.2002/C1	Nut,	2	B.A.	-	-	-	-
	AGS.2007/C1	Nut,	2	B.A.	-	-	-	-
	AGS.2008/C1	Nut,	2	B.A.	-	-	-	-
	AGS.2012/C11	Nut,	2	B.A.	-	-	-	-
	AGS.2019/C1	Nut,	2	B.A.	-	-	-	-
	AGS.2002/E1	Nut,	1	B.S.F.	-	-	-	-
	A.27.CS	Nut,	2	B.A.	-	-	-	-
	A14.EB	Nut,		lock	-	-	-	-
	AS.566/B	Plug	-	-	-	-
	SP.9.C4	Split, pin...	-	-	-	-
	AGS.1533/E	Strip, bonding	-	-	-	-
	AGS.1104/C	Union,	-	-	-	-
	SP.15.B	Washer,	4	B.A....	-	-	-	-
	SP.16.BB	Washer,	4	B.A....	-	-	-	-
	SP.15.C	Washer,	2	B.A....	-	-	-	-
	SP.15.E	Washer,	1	B.S.F.	-	-	-	-
	SP.16.C	Washer,	2	B.A....	-	-	-	-
	SP.23.C	Washer,	2	B.A....	-	-	-	-

F+W Aendg. od. Ae. A.	Part No.	Description	No. Off	Material Specificat.	M. R. Class of Store	Plate No.
Pos.						
1	B.209656	Leitung	1	DTD.253	B	NB.1A
2	B.214127	Leitung	1	DTD.253	B	NB.1A
3	A.212532	Leitung	1	DTD.253	B	NB.1A
4	C.214000	Leitung	1	DTD.253	B	NB.1A
5	C.214001	Leitung	1	DTD.253	B	NB.1A
6	C.201523	Leitung	1	DTD.253	B	NB.1A
7						
8						
9	B.214125	Leitung	1	DTD.253	B	NB.1A
10	B.214126	Leitung	1	DTD.253	B	NB.1A
11	C.201525/15	Leitung	1	DTD.253	B	NB.1A
12	C.201525/16	Leitung	1	DTD.253	B	NB.1A
13	C.201521	Leitung	1	DTD.253	B	NB.1A
14	C.201522	Leitung	1	DTD.253	B	NB.1A
15						
16						
17	C.201517	Leitung	1	DTD.253	B	NB.1A
18	C.201518	Leitung	1	DTD.253	B	NB.1A
19	C.201525/21	Leitung	1	DTD.253	B	NB.1A
20	C.201525/19	Leitung	1	DTD.253	B	NB.1A
21	C.201525/30	Leitung	1	DTD.253	B	NB.1A
22	C.201525/9	Leitung	1	DTD.253	B	NB.1A
23	C.201525/10	Leitung	1	DTD.253	B	NB.1A
24	C.201525/11	Leitung	1	DTD.253	B	NB.1A
25	C.201525/12	Leitung	1	DTD.253	B	NB.1A
26	C.201525/26	Leitung	1	DTD.253	B	NB.1A
27	C.201525/27	Leitung	1	DTD.253	B	NB.1A
28	C.200368	4-Weg-Leitung	1	DTD.253	B	NB.1A
29	C.201525/3	Leitung	1	DTD.253	B	NB.1A
30	C.201520	Leitung	1	DTD.253	B	NB.1A
31	C.201525/6	Leitung	1	DTD.253	B	NB.1A
32	C.201525/7	Leitung	1	DTD.253	B	NB.1A
33	C.201525/28	Leitung	1	DTD.253	B	NB.1A
34	C.201525/29	Leitung	1	DTD.253	B	NB.1A
35						
36	C.202088/6	Leitung	1	DTD.253	B	NB.1A
37	A.239541	Leitung (F.Mk.58)	1	DTD.253	B	NB.1A
37a	6F-F+W-709919	Leitung (F.Mk.58A)	1			NB.1+1A
-	A.173196	Nippel zu Leitung A.239541	1			
38	B.239309	Leitung	1	DTD.253	B	NB.1A
38a	6F-F+W-806192	Leitung (F.Mk.58A)	1			NB.1+1A
39	B.203411/2	Leitung	1	DTD.253	C	NB.1A
40	B.203411/3	Leitung	1	DTD.253	C	NB.1A
41	B.203411/4	Leitung	1	DTD.253	C	NB.1A
42	B.203411/5	Leitung	1	DTD.253	C	NB.1A
43	B.203411/6	Leitung	1	DTD.253	C	NB.1A
44	C.202202	Leitung	1	DTD.253	B	NB.1A
45	C.202203	Leitung	1	DTD.253	B	NB.1A
46	C.202088/7	Leitung	1	DTD.253	B	NB.1A

Treibstoff-Anlage
Rumpf

Hunter F. Mk. 58

Page NB. 14

F+W Aendg. od. Ae. A	Part No.	Description	No. Off	Material Specificat.	M. R. Class of Store	Plate No.
Pos.						
47	C.202088/8	Leitung	1	DTD.253	B	NB.1A
48	C.188051/16	Leitung	1	DTD.253	C	NB.1A
49	C.188051/17	Leitung	1	DTD.253	C	NB.1A
50	B.240544	Leitung	1			NB.1+1A
51	B.240545	Leitung	1			NB.1+1A
52	B.240546	Leitung	1			NB.1+1A
53	B.240547	Leitung	1			NB.1+1A
54	B.240548	Leitung	1			NB.1+1A
55	C.202088/54	Leitung	2	DTD.253	C	NB.1A
56	B.240549	Leitung	1			NB.1+1A
57	B.240550	Leitung	2			NB.1+1A
58	B.239310	Leitung (F.Mk.58)	1			NB.1A
* 59	A.239543	Leitung (F.Mk.58)	1			NB.1A
60	A.239544	Leitung	1			NB.1+1A
61						
62	C.202088/20	Leitung	1	DTD.253	B	NB.1A
63	C.202088/21	Leitung	1	DTD.253	B	NB.1A
64	A.212046	Leitung	1	DTD.253	B	NB.1A
65	C.201525/25	Leitung	1	DTD.253	B	NB.1A
66	B.201526	Leitung	1	DTD.253	B	NB.1A
67	C.201525/4	Leitung	1	DTD.253	B	NB.1A
68	B.219228	Leitung	1	DTD.253	C	NB.1A
69	C.202208	Leitung	1	DTD.253	B	NB.1A
70	C.202088/22	Leitung	1	DTD.253	C	NB.1A
71	C.202088/23	Leitung	1	DTD.253	C	NB.1A
72	C.202088/26	Leitung	1	DTD.253	MR/C	NB.1A
73	C.202088/27	Leitung	1	DTD.253	MR/C	NB.1A
74	C.201525/23	Leitung	1	DTD.253	B	NB.1A
75	C.201525/24	Leitung	1	DTD.253	MR/C	NB.1A
76	C.201525/22	Leitung	1	DTD.253	MR/C	NB.1A
77	6F-F+W-515737	Haltewinkel	1	746.5		NB.1A
78	C.202088/29	Leitung	1	DTD.253	C	NB.1A
79	B.219014/9	Leitung	1	DTD.253	C	NB.1+1A
80	C.202088/31	Leitung	1	DTD.253	MR/C	NB.1A
81	C.202088/32	Leitung	1	DTD.253	MR/C	NB.1A
82	C.202088/33	Leitung	1	DTD.253	MR/C	NB.1A
83						
84	C.202088/37	Leitung	1	DTD.253	MR/C	NB.1A
85	B.219014/1	Leitung	1	DTD.253	C	NB.1A
86	B.219014/3	Leitung	1	DTD.253	C	NB.1A
87	B.219014/7	Leitung (Mod.545)	1	DTD.253	C	NB.1A
88	B.219014/6	Leitung (Mod.545)	1	DTD.253	C	NB.1A
89	B.219014/5	Leitung	1	DTD.253		NB.1A
90	B.219014/2	Leitung (Mod.545)	1	DTD.253		NB.1A
91	B.219014/4	Leitung (Mod.545)	1	DTD.253		NB.1A
* 58a	6F-F+W-806176	Leitung (F.Mk.58A)	1			NB.1+1A
59a	6F-F+W-709920	Leitung (F.Mk.58A)	1			NB.1+1A

F+W Aendg. od. Ae. A.	Part No.	Description	No. Off	Material Specificat.	M. R. Class of Store	Plate No.	
Pos.							
F+W Pkt.406 {	92	6F-BAMF-C-12069	Leitung	1	L.67	MR/C	NB.1A
Ae.A. 1432 {	93	6F-BAMF-C-12070	Leitung	1	L.67	MR/C	NB.1A
	94	C.202088/48	Leitung	1	DTD.253	C	NB.1A
	95	C.202088/49	Leitung	1	DTD.253	C	NB.1A
	96	A.239540/1	Leitung	1			NB.1+1A
	97	A.239540/2	Leitung	1			NB.1+1A
	98	B.219014/8	Leitung (Mod.545)	1	DTD.253	C	NB.1A
F+W Pkt.406 {	99	6F-BAMF-C-12068-R2	Trichter links	1			NB.1A
Ae.A. 1432 {	100	6F-BAMF-C-12068-R1	Trichter rechts	1			NB.1A
	101						
	102	C.202088/41	Leitung links	1	DTD.253	MR/C	NB.1A
	103	C.202088/42	Leitung rechts	1	DTD.253	MR/C	NB.1A
	104	C.202088/38	Leitung links	1	DTD.253	MR/C	NB.1A
	105	C.202088/39	Leitung rechts	1	DTD.253	MR/C	NB.1A
	106						
	107	C.202088/50	Leitung links	1	DTD.253	MR/C	NB.1A
	108	C.202088/51	Leitung rechts	1	DTD.253	MR/C	NB.1A
	109	C.266331	Dampfabscneider	2		A	NB.1A+3
	110	B.217334	Unter- + Ueberdruck-Sicherheitsventil	2		A	NB.1A+2
	111	B.225865-S3	Druckablassventil f. Flügerbehälter	4		B	NB.1A+3
	112	A.186567	Rückschlagventil	4		B	NB.1A+2
	113	A.201802	Verbindungs-Stück	2	L.65.C	C	NB.1A
	114	A.192904	Aussenbordanschluss	1		B	NB.1A+2
	115	A.201800	Gewinde-Anschluss	2			NB.1A
	116	F.184931	Spez.-Bolzen	n.Be			NB.1A
	117	F.185592	Zwischenlage	n.Be			NB.1A
	118	F.213079	Spez.-Mutter	n.Be			NB.1A
	119	B.181004	Leitung	2			NB.1A
	120	Marston- CM.2930	Dichtung	2			NB.1A+3

F + W Aendg. od. Ae. A	Part No.	Description	No. Off	Material Specificat.	M. R. Class of Store	Plate No.
Pos.						
A1	Avery-Hardoll- FC.110	Aussenbord-Auffüll- und Ent- leerungs-Anschluss (NATO)	1	-		NB.1A
B1	Saunders-42A10	Ablasshahn	1	-	B	NB.1A
C1	Flight-Ref. C.1117000/6 A	Auffüllventil	4	-	A	NB.1A
D1	SPE-2009.Mk.5	Treibstoff-Quellenpumpe	2	-		NB.1A
E1						
F1	Rotol-FFP 2/2	Durchflussregler	1	-		NB.1A
G1	SPE-3994	Rückenflugbehälter	2	-	A	NB.1A
H1	Saunders-51B12	Niederdruckhahn	1	-		NB.1A
J1	Flight-Ref. C.1117000/6 B	Auffüllventil	2	-		NB.1A
K1	Saunders- 216 CH80-P3	Tankwählerhahn links mit	1	-	A	NB.1A
	Plessey- CZ.54709/5F-L	Actuator	1	-		NB.1A
L1	Saunders- 216 CJ-80-P3	Tankwählerhahn rechts mit	1	-	A	NB.1A
	Plessey- CZ.54709/5F-R	Actuator	1	-		NB.1A
M1	Saunders- 708 AA/25/B	Tankdruckrückschlagventil	3	-		NB.1A
N1	Hymatic-C.51886	Tankdruckreduzierventil	1	-	A	NB.1A
P1	Hymatic-C.51642	Tankdruckreduzierventil	2	-	A	NB.1A
Q1	Palmer-D.10721	Luftfilter	1	-		NB.1A
R1	AS 4760-5	Kingventil	7	-		NB.1A
S1	Thermal-Contr. TP.5250	Treibstoffdruckschalter	2	-	A	NB.1A
U1	Thermal-Contr. TP.1200	Treibstoffdruckschalter (Mod.476)	4	-	A	NB.1A
V1	Flight-Ref. FRS.110/L	Leitungs-Verbindung	6	-	A	NB.1A
	Flight-Ref. FRS.54/L	Gummidichtung	1			
	6F-BAMF-107/L	Sich.-Ring aussen	1			
W1	Flight-Ref. FRS.110/K	Leitungs-Verbindung	1	-	A	NB.1A
	Flight-Ref. FRS.54/K	Gummidichtung	1			
	6F-BAMF-106/K	Sich.-Ring aussen	1			
X1	Flight-Ref. FRS.110/H	Leitungs-Verbindung	2	-	A	NB.1A
	Flight-Ref. FRS.54/H	Gummidichtung	1			
	6F-BAMF-105/H	Sich.-Ring aussen	1			

F+W Aendg. od. Ae. A.	Part No.	Description	No. Off	Material Specificat.	M. R. Class of Store	Plate No.
Pos.						
Y1	Dowty- GD.1308/2	Dichtungsring	10	-	C	NB.1A
Z1	Dowty- GD.1308/1	Dichtungsring	7	-	C	HC.1A
A2	Dowty- GD.1309/25	Dichtungsring	13	-	C	NB.1A
B2	Dowty- GD.1308/21	Dichtungsring	2	-	C	NB.1A
C2	Dowty- GD.1309/27	Dichtungsring	5	-	C	NB.1A
D2	Dowty- GD.1307/K	Metall-Gummiring	2	-	C	NB.1A
E2	Dowty- GD.1307/3	Metall-Gummiring	12	-	C	NB.1A
F2	Dowty- GD.1307/B	Metall-Gummiring	4	-	C	NB.1A
G2	Dowty- GD.1307/C	Metall-Gummiring	3	-	C	NB.1A
H2	Dowty- GD.1307/BB	Metall-Gummiring	4	-	C	NB.1A
K2	King-C.5338	Flexible-Kupplung	2	-	B	NB.1A
L2						
M2	Dowty- GD.1307/A	Metall-Gummiring	12	-	C	NB.1A

Treibstoff-Anlage
Rumpf

Hunter F. Mk. 58

Page NB. 18

F + W Aendg. od. Ae. A	Part No.	Description	No. Off	Material Specificat.	M. R. Class of Store	Plate No.
Pos.						
A	A.185593	Klemm-Stück 1 3/4" B.S.P	10	-	C	NB.1A
B	A.201803	Klemm-Stück 1 1/2" B.S.P	7	-	C	NB.1A
C	A.185870	Klemm-Stück 1 1/2" B.S.P	2	-	C	NB.1A
	F.185873	Klemmring-Hälfte	4	DTD.364	C	NB.1A
	F.185874	Seegerring	2	DTD.215	C	NB.1A
D	A.186450	Klemm-Stück 1 1/4" B.S.P	13	-	C	NB.1A
E						
F	AGS 2002/C1	Sich.-Mutter 2 BA	4	-	-	NB.1A
	SP 15/C	U-Scheibe 2 BA	4	-	-	NB.1A
G	F.188372	Nippel 1 3/4" B.S.P	1	S.1	C	NB.1A
H	F.188057	Nippel 1 3/4" B.S.P	4	S.1	C	NB.1A
J	AGS 1170/K	Nippel 1 1/2" B.S.P	4			NB.1A
K	AGS 1142/K	Nippel 1 1/2" B.S.P	2			NB.1A
L	AGS 1170/J	Nippel 1 1/4" B.S.P	1			NB.1A
M	AGS 1142/J	Nippel 1 1/4" B.S.P	4			NB.1A
N	AGS 1170/H	Nippel 1" B.S.P	9			NB.1A
P	AGS 1142/H	Nippel 1" B.S.P	14			NB.1A
Q	AGS 1170/F	Nippel 3/4" B.S.P	10			NB.1A
R	AGS 1142/F	Nippel 3/4" B.S.P	10			NB.1A
S	AGS 1170/E	Nippel 5/8" B.S.P	5			NB.1A
T	AGS 1142/E	Nippel 5/8" B.S.P	1			NB.1A
U	AGS 1142/D	Nippel 1/2" B.S.P	4			NB.1A
V	AGS 1170/C	Nippel 3/8" B.S.P	8			NB.1A
W	AGS 1142/C	Nippel 3/8" B.S.P	6			NB.1A
X	AGS 1118/B	T-Stück 1/4" B.S.P	1			NB.1A
Y	F.201934	Dichtung	2	D.75	C	NB.1A+3

F+W Aendg. od. Ae. A.	Part No.	Description	No. Off	Material Specificat.	M. R. Class of Store	Plate No.
Pos.						
a	AGS 1136/B	Schwenk-Anschluss 1/4" B.S.P	1			NB.1A
	AGS 1129/B	Schwenk-Anschluss 1/4" B.S.P	1			NB.1A
b	AGS 1170/D	Dichtkegel	1			NB.1A
c	F.204590	Uebergangs-Stück	1		B	NB.1A+2
d	AGS 1104/C	Doppelnippel	2			NB.1A
e	A.189594	Spant-Durchführung	2	DTD.364	C	NB.1A+2
	A 25/1C	Bolzen	6			NB.1A
	AGS 2002/C1	Sich.-Mutter	6			NB.1A
	SP 15/C	U-Scheibe	6			NB.1A
f						
g	F.226368	Dichtung	2	DTD.1177	C	NB.1A+3
	A 25/3C	Bolzen	12			NB.1A
h	STD 1996/9	Kugelkette	1			NB.1A
	F.197676/3	Halte-Oese	1	-	C	NB.1A+2
	Avery-Har- doll-FC.109	Deckel zu Aussenbordanschluss (Nato)	1			NB.1A
k	AGS 1135/B	Schwenk-Bolzen 1/4" B.S.P	2			NB.1A
	AGS 1129/B	Schwenk-Anschluss 1/4" B.S.P	2			NB.1A
l	AGS 1129/BB	Schwenk-Anschluss 3/16" B.S.P	2			NB.1A
	A.189332	Spez.-Schwenk-Anschluss	2	S.95	C	NB.1A
m	F.190837	Sich.-Mutter	2	DTD.364	C	NB.1A+3
	F.192028	Dichtungsring	2			NB.1A+3
n						
p	6F-F+W-515646	Dichtung	1	G.-Kork		NB.1A+3
q	AGS 566/B	Verschluss-Mutter	1			NB.1A
r	C.218432	Entlüftungs-Stutzen	1	S.3	-	NB.1A+3
	OR 4150	"O"-Ring	1	Gummi		NB.1A+3
	AS 1248/2C	Bolzen	6	-	-	NB.1A
s	B.202033	Konsole	1	L.72	MT/C	NB.1A
	A 25/36C	Bolzen 2 BA	4	-	-	NB.1A
	SP 15/C	U-Scheibe	2	-	-	NB.1A
	STD.915/C/24	U-Scheibe	2	DTD.364	C	NB.1A
t	A.202469	Anschluss	1	L.65.C	B	NB.1A+3
u	A.226378	Dichtung	2	DTD.1177	C	NB.1A+3
v	A.203497	Verschlussplatte	2	L.72	-	NB.1A
	A.226376	Dichtung	2	DTD.1177	C	NB.1A+2

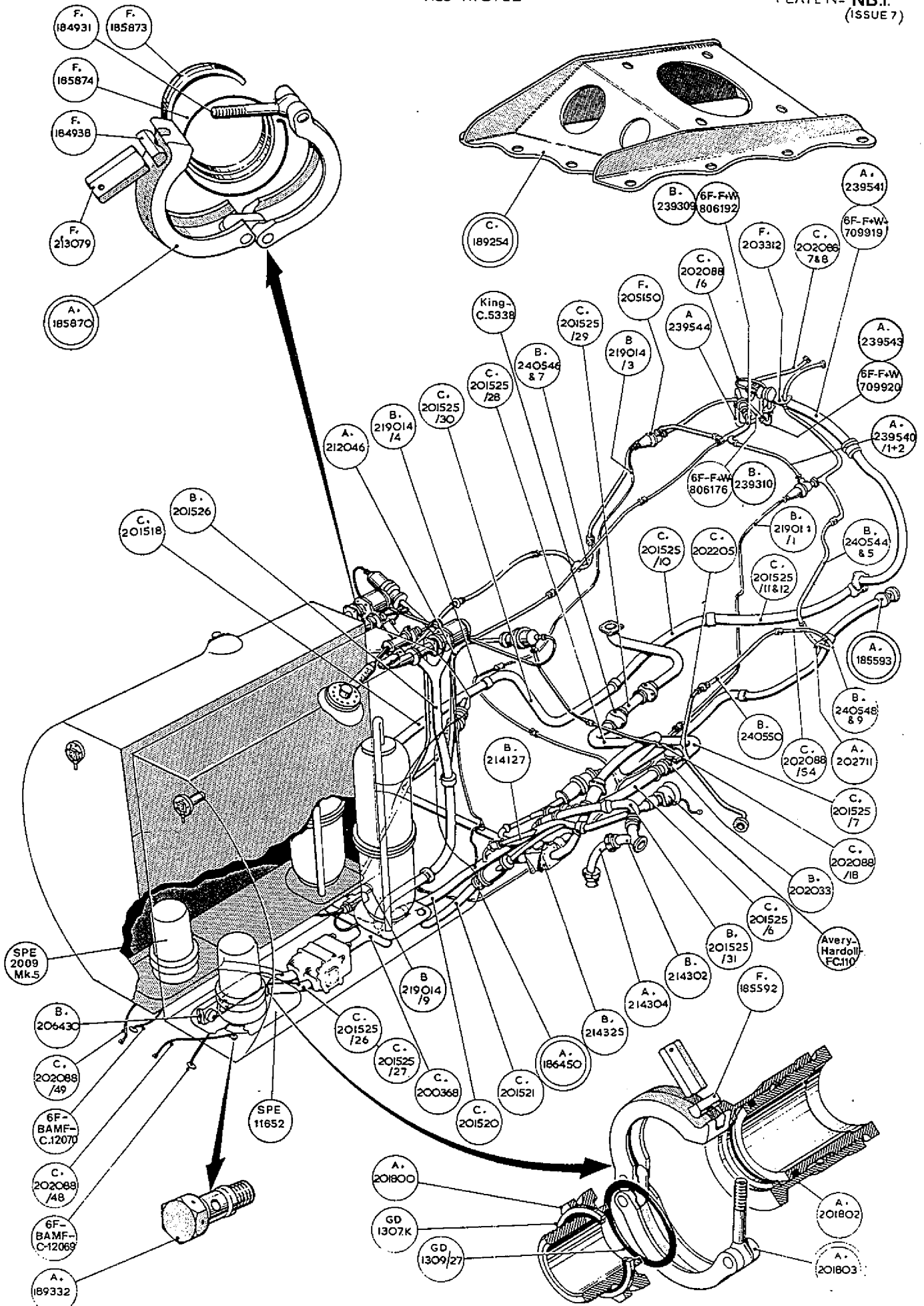
Treibstoff-Anlage
Rumpf

F+W Aendg. od. Ae. A.	Part No.	Description	No. Off	Material Specificat.	M. R. Class of Store	Plate No.
Pos.						
w	AGS 1129/A	Schwenk-Anschluss	2	-	-	NB.1A
	AGS 1135/A	Schwenk-Bolzen	2	-	-	NB.1A
x	A 25/2C	Bolzen 2 BA	7	-	-	NB.1A
	SP 16/C	U-Scheibe 2 BA	7	-	-	NB.1A
y	AGS 1104/A	Anschluss-Nippel	8	-	-	NB.1A
	A 25/4C	Bolzen 2 BA	3	-	-	NB.1A
z	AGS 2002/C1	Sich.-Mutter	3	-	-	NB.1A
	STD.1231/3	Sicherungs-Oese	6	S.3	C	NB.1A

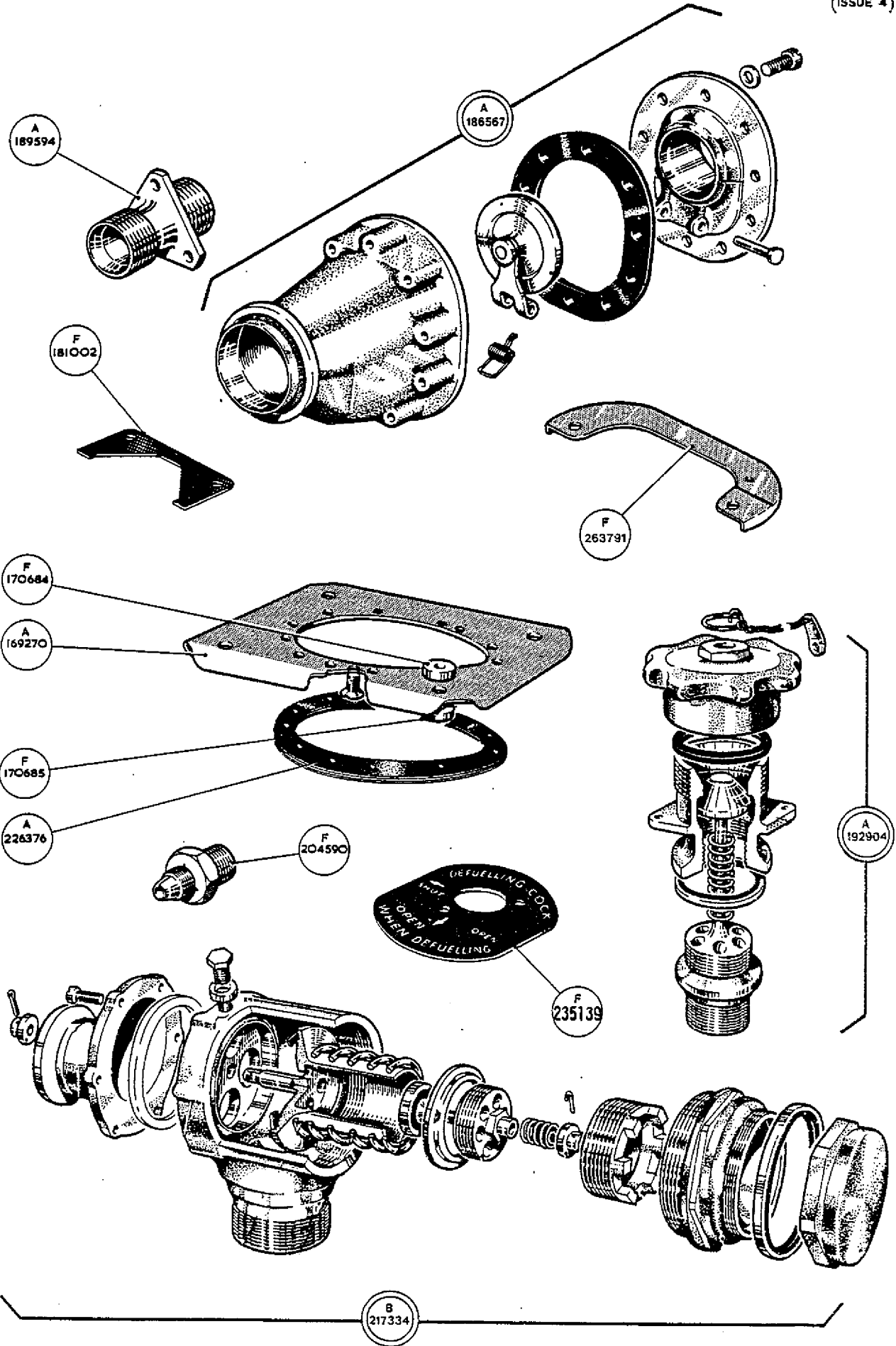
Treibstoff-Anlage
Uebergang vom Rumpf- zum Flügeltank

F+W Aendg. od. Ae. A.	Part No.	Description	No. Off	Material Specificat.	M. R. Class of Store	Plate No.
Pos.						
1	B.211551	Auffüll-Sicherheitsventil (Mod. 557)	2	-	B	NB.3+4
2	A.214304	Leitung (Mod. 459)	2	DTD.253	B	NB.4
3	B.214302	Leitung links (Mod. 459)	1	DTD.263	B	NB.4
4	B.214303	Leitung rechts (Mod. 459)	1	DTD.253	B	NB.4
5	A.208096	Leitung l+r	2	DTD.253	B	NB.4
6	C.201525/31	Leitung links (Mod. 459)	1	DTD.253	B	NB.4
7	C.201525/32	Leitung rechts (Mod. 459)	1	DTD.253	B	NB.4
8	C.202088/18	Leitung links	1	DTD.253	B	NB.4
9	C.202088/56	Leitung rechts	1	DTD.253	B	NB.4
10	C.202205	Leitung links	1	DTD.253	B	NB.4
11	C.202206	Leitung rechts	1	DTD.253	B	NB.4
12	A 25/2C	Bolzen	1	-		NB.4
13	STD 851/30	Bride (make from 303/1437)	1	DTD.610		NB.4
14	STD 1939/1	Dichtung	3	LFS.21	C	NB.4
15	A 25/1C	Bolzen 2 BA	1	-		NB.4
16	SP 15/C	U-Scheibe	1	-		NB.4
A	AGS 1142/F	Nippel	2	-		NB.4
B	AGS 1142/J	Nippel	2	-		NB.4
C	A.185593	Bride	2	-	C	NB.4
D	AGS 1129/A	Hohlschraube	2	-		NB.4
D	AGS 1135/A	Schwenkanschluss	2	-		NB.4
E	F.207610	Bolzen 2 BA	12	S.99.8	C	NB.4
E	SP 15/C	U-Scheibe	12	-		NB.4
F	AGS 1142/H	Nippel	2	-		NB.4
G						
H	A.186451	Bride	2	-	C	NB.4
J	AGS 566/B	Verschluss-Schraube	2	-		NB.4
K	STD 1703/6/C	Schraube	8	S.95.B	C	NB.4
L	AGS 1170/F	Nippel	2	-		NB.4
M	STD 850/58	Bride (make from 30 B/1433)	6	DTD.610		NB.4
N						
P	STD 1285/4BC	Massekabel	2	-		NB.4
Q	STD 1285/4BB	Massekabel	2	-		NB.4
R	A 25/1B	Bolzen	6	-		NB.4
R	AGS 2002/B1	Sich.-Mutter	6	-		NB.4
R	SP 15/B	U-Scheibe	12	-		NB.4
S	A.214274	Verbindungs-Stück (Mod. 459)	2	L.65.C	B	NB.4
T	A.214240	Verbindungs-Stück (Mod. 459)	2	L.65.C	B	NB.4
AI	Dowty- GD.1309/23	Dichtring	4	-		NB.4
BI	Dowty- GD.1309/21	Dichtring	2	-	C	NB.4

F+W Aendg. od. Ae.A. Pos.	Part No.	Description					No. Off	Material Specification	M.R. Class of Score	Plate No.
		1	2	3	4	5				
CI	Dowty- GD-1307/B					Dichtring	2	-	C	NB.4
DI	Dowty- GD-1307/J					Dichtring	2	-		NB.4
EI	Flight-Ref. FRS. 110/L					Leitungs-Kupplung	4	-	A	NB.4
	Flight-Ref. FRS. 54/L					Gummidichtung	1	-		
	Flight-Ref. FRS. 109/L					Kupplungskorb	1	-		
	Flight-Ref. FRS. 111/L					Kupplungs-Ueberwurfmutter	1	-		
	6F-BAMF-107/L					Sich.-Ring aussen	1	-		
F1	Dowty- GD-1308/2					Dichtungsring	4	-	C	NB.4 / NC.1
G1	Dowty- GD-1307/A					Metall-Gummiring	4	-	C	NB.4

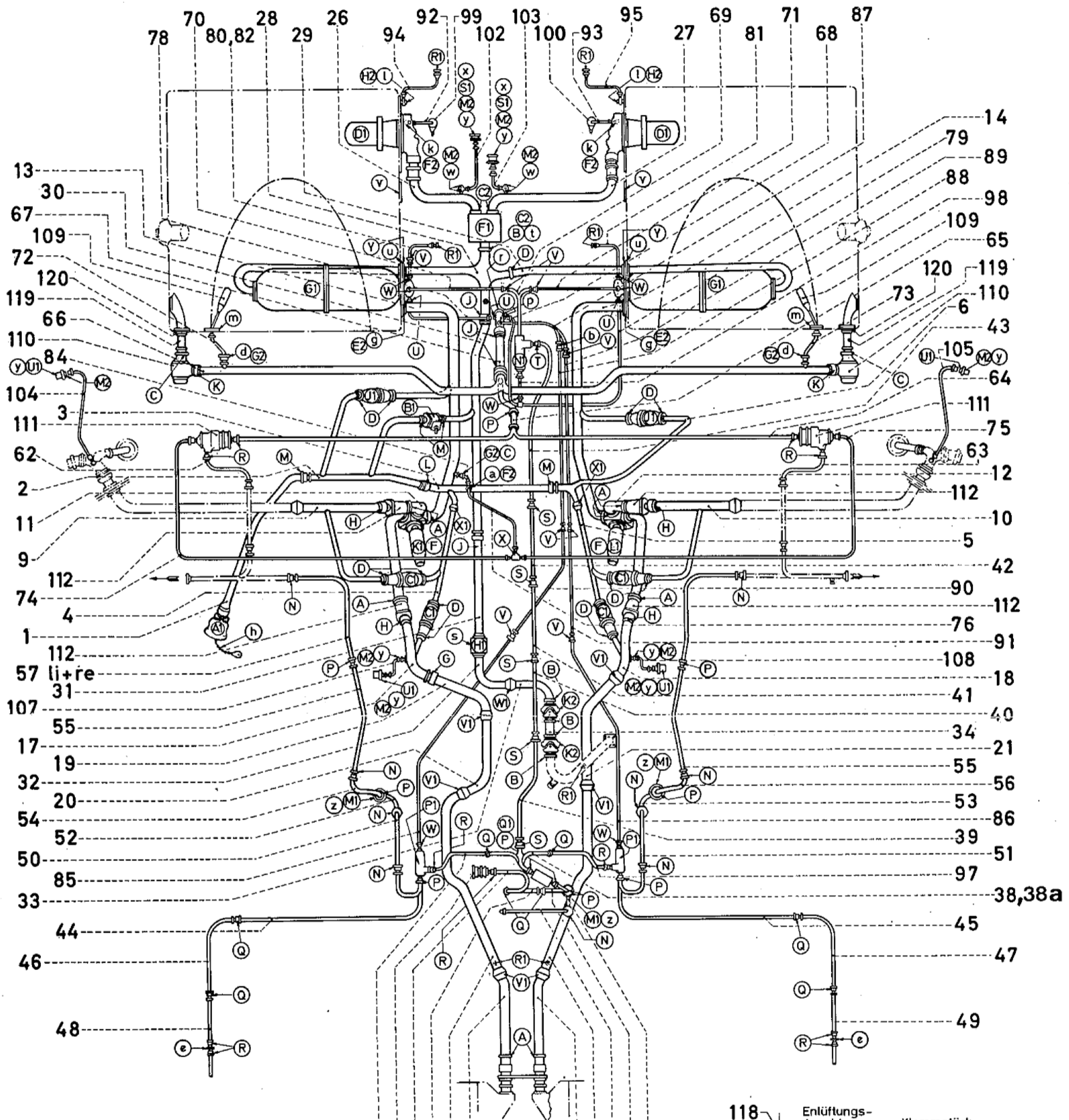


FUEL SYSTEM

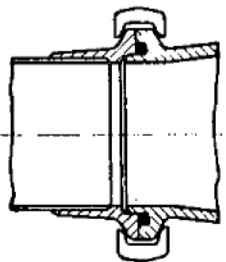


FUEL SYSTEM

TREIBSTOFF - ANLAGE

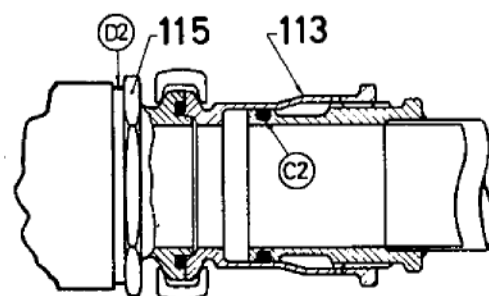


- Für Gruppe A = (Y1)
- Für Gruppe B = (Z1)
- Für Gruppe D = (A2)
- Für Gruppe F = (B2)

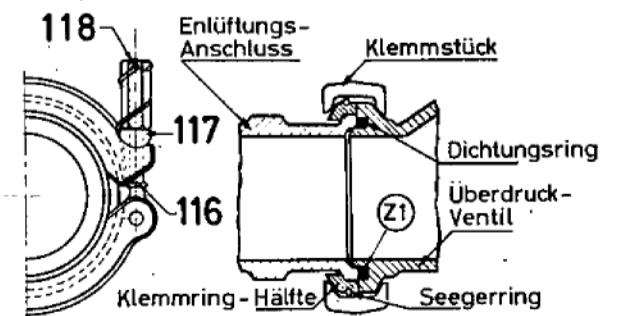


Gruppe A
Gruppe B & D ähnlich

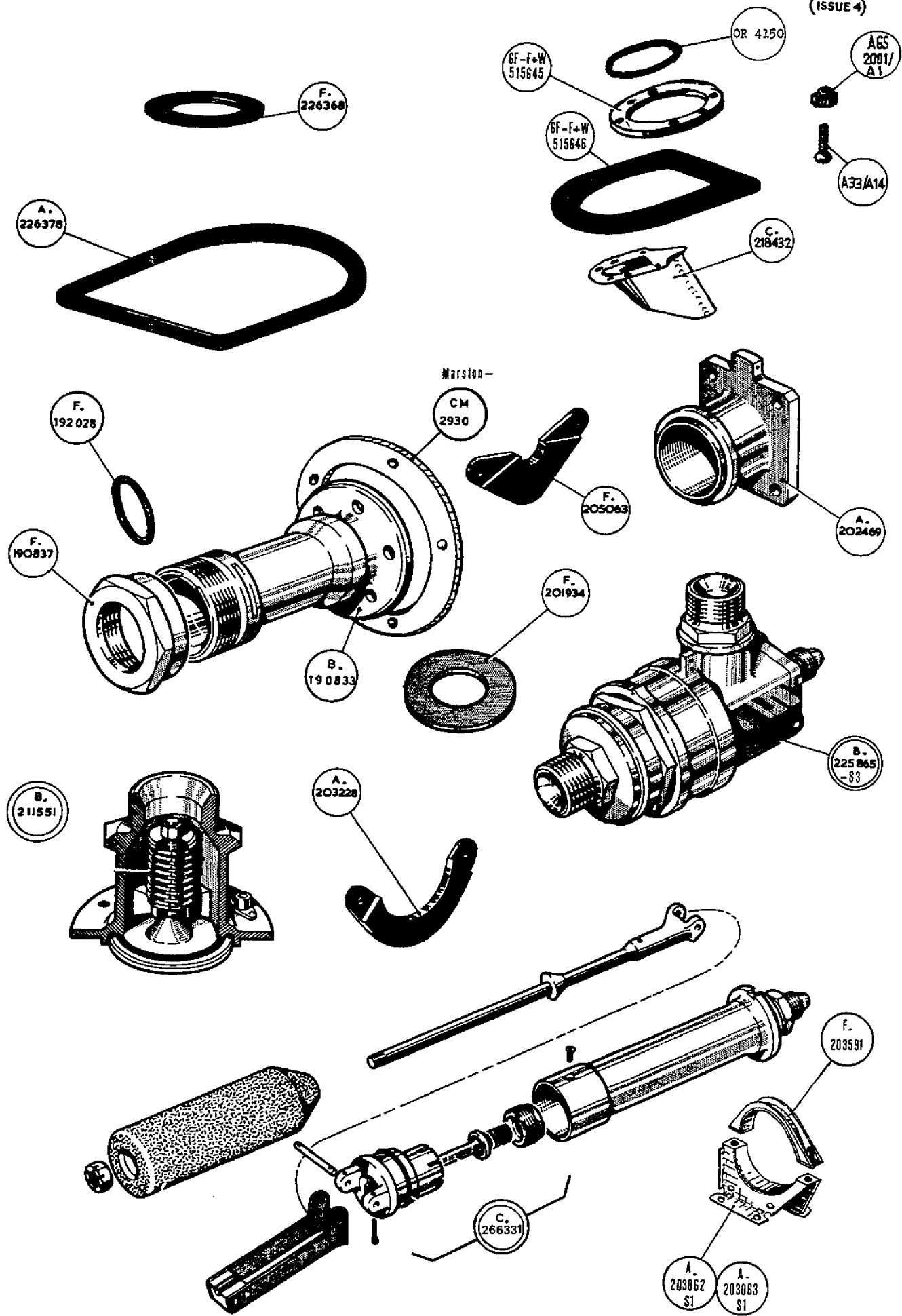
- 114 59 24
- 96 36 | 22
- 59a
- 25 37 60,77
- 23 | 58,58a
- 37a



Quellen - Pumpen - Anschluss



Gruppe C



FUEL SYSTEM

This file was downloaded
from the RTFM Library.

Link: www.scottbouch.com/rtfm

Please see site for usage terms,
and more aircraft documents.

