

AP101B-0402-3A

Page CC.1

CONTROLS
ENGINE CONTROLS IN WING PORT

Part Number	Description	No. Off	Matl. Spec.	Plate No.
EA3.47.21	CONTROLS, ENGINE IN WING PORT, ASSEMBLY	—	—	
	Spares for:			
EA1.47.81	. BLOCK, split, sealing, at rib 1	1	—	CC1/1
	Attaching parts for EA1.47.81:			
A25/2B	. Bolt, 4BA	6	—	CC1/2
AGS2001B1	. Nut, 4BA	6	—	CC1/3
SP15C	. Washer	6	—	CC1/4
EA1.47.15	. LEVER, CONTROL CONNECTING ASSEMBLY (PRE MOD.5028)	1	—	CC1/5
EA3.47.187	. LEVER, CONTROL CONNECTING ASSEMBLY (MOD.5028)	1	—	
	Spares for:			
SKEFKO EE.4	. . BEARING, ballrace, throttle	1	—	CC1/6
SKEFKO EE.5	. . BEARING, ballrace shut-off cock	1	—	CC1/7
EA1.47.63	. . CUP, lever, mounting, throttle	1	L64	CC1/8
EA1.47.57	. . CUP, lever, mounting, shut-off cock	1	L64	CC1/9
EA1.47.61	. . COVER, plate, bearing, throttle	1	L64	CC1/10
EA1.47.55	. . COVER, plate, bearing, shut-off cock	1	L64	CC1/11
HOFFMANN CJO	. . JOINT, self aligning	4	—	CC1/12
EA1.47.69	. . LEVER, control, throttle (Pre Mod.5028)	1	L72	CC1/13
EA3.47.191	. . LEVER, control, throttle (Mod.5028)	1	L72	
EA1.47.67	. . LEVER, control, shut-off cock (Pre Mod.5028)	1	L72	CC1/14
EA3.47.189	. . LEVER, control, shut-off cock (Mod.5028)	1	L72	
EA1.47.59	. . SLEEVE, spacing	1	L64	CC1/15
EA1.47.53	. . SPINDLE, control	1	L65	CC1/16
EA1.47.65	. . WASHER, clamping	1	L64	CC1/17
EA3.47.175	. LEVER, control and mounting assembly (Pre Mod.5177)	1	—	CC1/18
EA3.47.279	. LEVER, control and mounting assembly (Mod.5177)	1	—	
	Attaching parts for EA3.47.175 or EA3.47.279:			
A25/6C	. Bolt, 2BA	2	—	CC1/19
A25/3E	. Bolt, ¼" BSF	1	—	CC1/20
A25/4E	. Bolt, ¼" BSF	1	—	CC1/21
A27CS	. Nut, 2BA	2	—	CC1/22
A27ES	. Nut, ¼" BSF	2	—	CC1/23
SP90C4	. Pin, split	4	—	CC1/24
SP15E	. Washer	2	—	CC1/25
SP15C	. Washer	2	—	CC1/26
EA3.47.23	. TUBE, CONTROL ASSEMBLY (PRE MOD.2621)	2	—	CC1/27
EA4.47.551	. TUBE, CONTROL ASSEMBLY (MOD.2621)	2	—	
	Spares for:			
EA3.47.53	. . FORK-END, adjustable	1	—	CC1/28
A27JT	. . NUT, 3/8" BSF	1	—	CC1/29

CONTROLS

ENGINE CONTROLS IN WING PORT

Part Number	Description	No. Off	Mati. Spec.	Plate No.
EA3.47.25	. TUBE, CONTROL ASSEMBLY Spares for:	1	—	CC1/30
EA3.47.49	. . FORK-END, adjustable	1	—	CC1/31
A27ET	. . NUT, ¼" BSF	1	—	CC1/32
EA3.47.33	. TUBE, CONTROL ASSEMBLY	1	—	CC1/33
EA3.47.31	. TUBE, CONTROL ASSEMBLY Spares for:	1	—	CC1/34
AGS385B	. . BOLT, ball	1	—	CC1/35
EA3.47.41	. . FORK-END, control tube	1	—	CC1/36
A27ET	. . NUT, thin	2	—	CC1/37
A27ETL	. . NUT, thin, L.H.	1	—	CC1/38
SP90C5	. . PIN, split	1	—	CC1/39
SP28G6	. . PIN, taper	4	—	CC1/40
AGS385C	. . PLUG	1	—	CC1/41
EA3.47.39	. . PLUG, end	1	—	CC1/42
AGS385A	. . SOCKET	1	—	CC1/43
EA1.47.359	. . TURNBUCKLE	1	—	CC1/44
EA3.47.29	. TUBE, control, assembly Attaching parts for control tubes:	1	—	CC1/45
EEAS12/1	. Bolt, special	2	S96	CC1/46
EEAS63	. Nut, special	2	S96	CC1/47
SP90C4	. Pin, split	2	—	CC1/48
SP15C	. Washer, spacing	4	—	CC1/49
EEAS28/3DU	. Washer (under nut)	QR	—	CC1/50

R

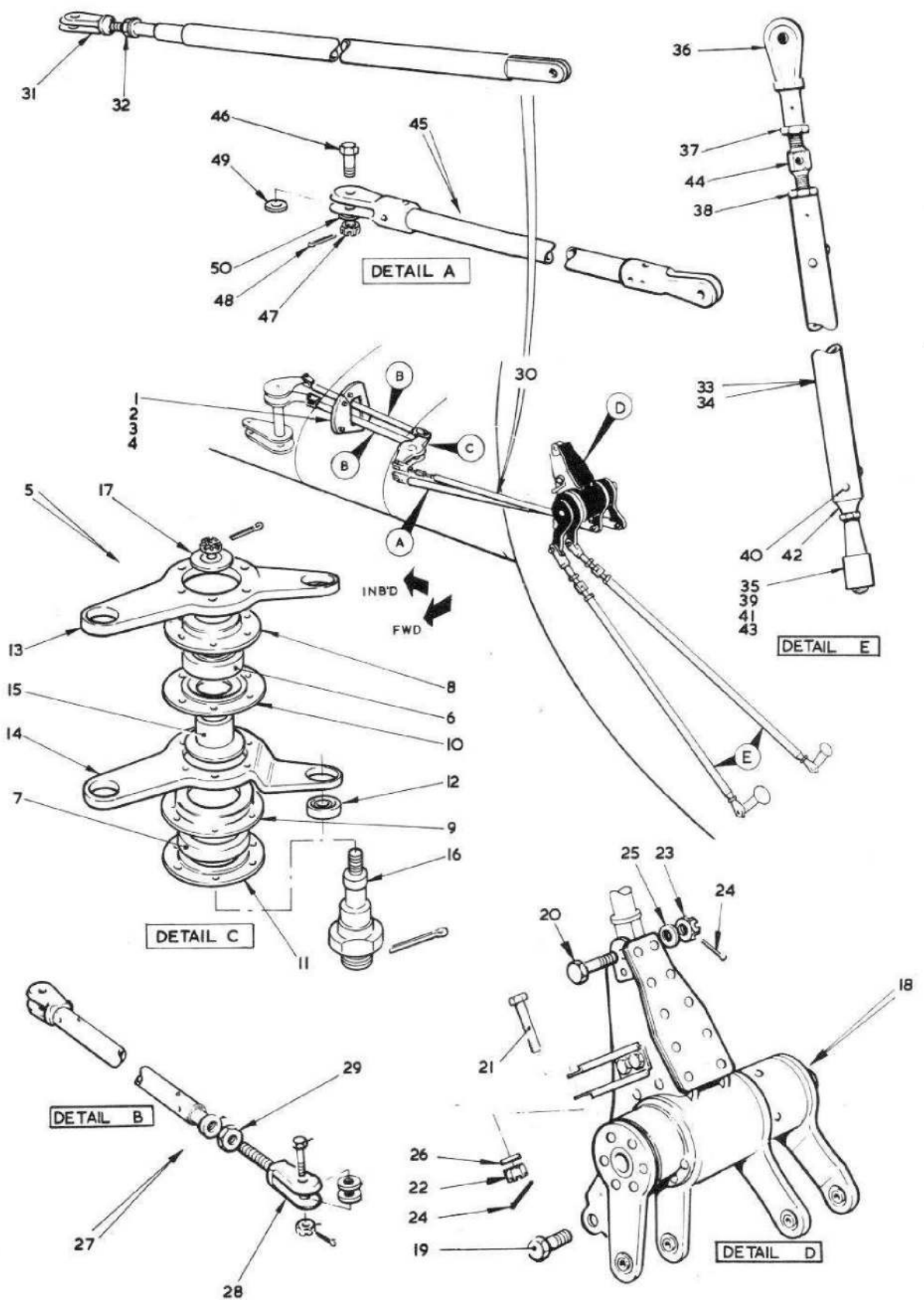


FIG. I ENGINE CONTROLS IN PORT MAINPLANE

This file was downloaded
from the RTFM Library.

Link: www.scottbouch.com/rtfm

Please see site for usage terms,
and more aircraft documents.

