

ELECTRICAL EQUIPMENT IN WINGS

Part Number	Description	No. Off	Matl. Spec.	Plate No.
EA3.81.9 EA3.81.10	ELECTRICAL EQUIPMENT IN PORT WING, ASSEMBLY ELECTRICAL EQUIPMENT IN STARBOARD WING, ASSEMBLY Spares for: Are identical for port and starboard except where shown otherwise:	- -	- -	
EA1.81.11 EA1.81.12	CONDUIT ACROSS ENGINE NACELLE, PORT, ASSEMBLY CONDUITS ACROSS ENGINE NACELLE, STARBOARD ASSEMBLY Spares for: Are identical for port and starboard except where shown otherwise:	- -	- -	
EA1.81.103	ANGLE, support	2	-	ED1/1
SP91J	CLIP, hose, securing sleeve	2	-	ED1/2
EA1.81.104	CLIP, 1/2" i/d conduit securing	2	-	ED1/3
EA1.81.102	CLIP, 1 1/2" i/d conduit securing Attaching parts for EA1.81.104 and EA1.81.102:	3	-	ED1/4
A25/2B	Bolt, 4BA	QR	-	ED1/5
A25/1C	Bolt, 2BA	QR	-	ED1/6
A27BP	Nut, 4BA	QR	-	ED1/7
A27CP	Nut, 2BA	QR	-	ED1/8
EA1.81.105	Washer, 'D' 4BA	QR	-	ED1/9
SP47B	Washer, spring	QR	-	ED1/10
SP47C	Washer, spring	QR	-	ED1/11
EA1.81.101	CONDUIT, 1 1/2" o/d x 20 SWG	1	-	ED1/12
EA1.81.11A	CONDUIT, 1 1/2" o/d x 20 SWG, 24" long port only	1	T9	ED1/13
EA1.81.12A	CONDUIT, 1 1/2" o/d x 20 SWG, 24" long starboard only	1	T9	ED1/14
EA1.81.11B	SLEEVE, conduit coupling, 15/8" o/d x 3" x 17 SWG	1	T4	ED1/15
EA1.81.15	CONDUITS IN INNER WING, PORT, ASSEMBLY	-	-	
EA1.81.16	CONDUITS IN INNER WING, STARBOARD, ASSEMBLY Spares for: Are identical for port and starboard	-	-	
EA1.81.106	ANGLE, support	1	-	ED2/1
EA1.81.107	ANGLE, support	1	-	ED2/2
EA1.81.108	CLIP, conduit securing	1	-	ED2/3
EA1.81.111	CLIP, conduit securing Attaching parts for EA1.81.108 and EA1.81.111:	2	-	ED2/4
A25/1B	Bolt, 4BA	QR	-	ED2/5
A27BP	Nut, 4BA	QR	-	ED2/17
SP47B	Washer, 4BA, spring	QR	-	ED2/18
EA1.81.15A	CONDUIT, 15/8" o/d	1	-	ED2/6
EA1.81.17	CONDUIT ON RIB 7, INNER WING, PORT, ASSEMBLY	-	-	ED2/7
EA1.81.18	CONDUIT ON RIB 7, INNER WING, STARBOARD, ASSEMBLY Spares for: Are identical for port and starboard	-	-	ED2/8
EA1.81.102	CLIP, conduit securing	1	-	ED2/9
EA1.81.110	CLIP, conduit securing Attaching parts for EA1.81.102 and EA1.81.110:	5	-	ED2/10
A25/1C	Bolt, 2BA	QR	-	ED2/11
A25/2C	Bolt, 2BA	QR	-	ED2/12
A27CP	Nut, 2BA	QR	-	ED2/13
SP47C	Washer, 2BA	QR	-	ED2/14

ELECTRICAL
ELECTRICAL EQUIPMENT IN WINGS

Part Number	Description	No. Off	Matl. Spec.	Plate No.
EA1.81.17A	. . . CONDUIT, 1½" o/d x 82" long x 20 SWG	1	T9	ED2/15
EA1.81.17B	. . . PACKING	5	Tufnol	ED2/16
EA1.81.13	. . . CONDUITS IN OUTER WING, PORT, ASSEMBLY	—	—	—
EA1.81.14	. . . CONDUITS IN OUTER WING, STARBOARD, ASSEMBLY	—	—	—
	Spares for:			
	Are identical for port and starboard			
SP144/028	. . . CLIP, hose, securing sleeve	2	—	ED3/1
EA1.81.109	. . . CLIP, conduit securing	6	—	ED3/2
	Attaching parts for EA1.81.109:			
A25/1B	. . . Bolt, 4BA	1	—	ED3/3
A27BP	. . . Nut, 4BA	1	—	ED3/4
SP47B	. . . Washer	1	—	ED3/5
EA1.81.13L	. . . CONDUIT, 1" o/d x 11ft x 24 SWG	1	T9	ED3/6
EA1.81.13M	. . . CONDUIT, 1" o/d x 5½ft x 24 SWG	1	T9	ED3/7
EA1.81.13N	. . . SLEEVE, conduit coupling, 1½" o/d x 3" x 20 SWG	1	T9	ED3/8
	. . . EARTH POINT IN UNDERCARRIAGE WELL ON RIB E, PORT (C/MOD/CAN/0218) (MOD.5180)	—	—	ED6/1
	Spares for:			
EA9.81.10865	. . . BOLT, 5/16" UNF	1	S96	ED6/2
EA9.81.10867	. . . LABEL, engraved	1	L72	ED6/3
A103GT	. . . NUT, 5/16" UNF	2	—	ED6/4
AGS3413G	. . . NUT, wing, 5/16" UNF	1	—	ED6/5
SP90C5	. . . PIN, split	1	—	ED6/6
EEAS28/31ERW	. . . WASHER, 'D'	1	—	ED6/7
SP55G	. . . WASHER, double spring	1	—	ED6/8
SP126G	. . . WASHER	1	—	ED6/9
EA3.81.553	. . . ELECTRICAL EQUIPMENT IN ENGINE BAY, PORT, ASSEMBLY (PRE MOD.711)	—	—	—
EA3.81.2435	. . . ELECTRICAL EQUIPMENT IN ENGINE BAY, PORT, ASSEMBLY (MOD.711)	—	—	—
EA3.81.554	. . . ELECTRICAL EQUIPMENT IN ENGINE BAY, STARBOARD, ASSEMBLY (PRE MOD.711)	—	—	—
EA3.81.2436	. . . ELECTRICAL EQUIPMENT IN ENGINE BAY, STARBOARD, ASSEMBLY (MOD.711)	—	—	—
	Spares for:			
	Are identical for port and starboard except where shown otherwise:			
EA1.81.123	. . . BOX, JUNCTION NO.11, PORT, ASSEMBLY	1	—	ED4/1
EA1.81.124	. . . BOX, JUNCTION NO.12, STARBOARD, ASSEMBLY	1	—	ED4/2
	Spares for:			
	Are identical for port and starboard except where shown otherwise:			
EA1.81.117 BOX, junction	1	—	ED4/3
EA1.81.119 COVER, junction box, No.11, port	1	—	ED4/4
EA1.81.120 COVER, junction box, No.12, starboard	1	—	ED4/5
	Spares for EA1.81.119 and EA1.81.120:			
EA1.81.119/B GASKET, Linatex 1/16" thick (Pre Mod.4723)	1	Linatex	—
 GASKET, Synthetic cork (Mod.4723) (Make from Ref.32B/9103610)	1	BS.4332	—
	Attaching parts for EA1.81.119 and EA1.81.120:			
A32B12 Screw, 4BA	2	—	ED4/6
SP13B Washer	2	—	ED4/7
 GREASE, silicone, type XG250-NATO S-736 (Mod.4723)	QR	—	—
508-1-06422 PLUG, 9 way, size B (Pre Mod.4723)	3	—	—

AP101B-0402-3A

ELECTRICAL

ELECTRICAL EQUIPMENT IN WINGS

Part Number	Description	No. Off	Matl. Spec.	Plate No.
508/1/06422	PLUG, 9 way, size 'B' (Mod.4723)	3	--	ED4/8
508-1-06423	PLUG, 6 way, size 'B' (Pre Mod.4723)	1	--	
508/1/06423	PLUG, 6 way, size 'B' (Mod.4723)	1	--	ED4/9
508-1-06428	PLUG, 12 way, size 'C' (Pre Mod.4723)	1	--	
508/1/06428	PLUG, 12 way, size 'C' (Mod.4723)	1	--	ED4/10
508-1-06429	PLUG, 14 way, size 'C' (Pre Mod.4723)	1	--	
508/1/06429	PLUG, 14 way, size 'C' (Mod.4723)	1	--	ED4/11
—	REPELLANT, water, PX-24NATO C-634	QR	--	
SL3/3	SLEEVE, 3/4"	28	--	ED4/12
508-2-11232-002	SLEEVE, cable, 4 amp	34	--	ED4/13
703-2-00320	TAG, closed end, 7 amp	7	--	ED4/14
Z56547	TAG, closed end, 19 amp	1	--	ED4/15
EEAS142	TERMINAL, earth	1	--	ED4/16
	Attaching parts for EEAS142:			
A53A	Nut, 6BA	2	--	ED4/17
A45A12	Screw, 6BA	2	--	ED4/18
703-2-00340-020	THIMBLE, 7 amp	7	--	ED4/19
703-2-00341-020	THIMBLE, 19 amp	1	--	ED4/20
	Attaching parts for EA1.81.123 and EA1.81.124:			
A25/1C	Bolt, 2BA	4	--	ED4/21
AGS2001C1/66	Nut, 2BA	4	--	ED4/22
SP15C	Washer	4	--	ED4/23
SP16C	Washer, spacing	2	--	ED4/24
EA1.20/2923	BRACKET, angle	1	--	ED4/25
EA3.81.1253	BRACKET, assembly (Pre Mod.711)	4	--	ED4/26
	Attaching parts for EA3.81.1019 or EA3.81.1253:			
A25/1C	Bolt, 2BA	2	--	ED4/27
AGS2001C1/66	Nut, stiff, 2BA	2	--	ED4/28
SP15C	Washer	2	--	ED4/29
EA3.81.1961	BRACKET, clamp	1	--	ED4/30
	Attaching parts for EA3.81.1961:			
A25/5B	Bolt, 4BA	2	--	ED4/31
AGS2001B1	Nut, stiff, 4BA	2	--	ED4/32
SP15B	Washer	2	--	ED4/33
EA3.81.2445	BRACKET (Mod.711)	3	--	ED4/34
AV/W50	BUCKLE, clipping cable to breather pipe	6	--	ED4/35
EA3.81.1965	CLAMP, fixing cable	2	--	ED4/36
AGS1617/9	CLEAT, fixing cables (Mod.711)	7	--	ED4/37
AS491/20	CLIP, fixing cable (Mod.711)	1	--	ED4/38
AS491/24	CLIP, fixing cables, starboard (Pre Mod.711)	1	--	
AS491/36	CLIP, fixing cables (Pre Mod.711)	1	--	
AS492/34	CLIP, fixing cables, starboard (Pre Mod.711)	2	--	
AS1900C	CLIP, fixing cables, starboard (Pre Mod.711)	3	--	
AS1900C	CLIP, fixing cables (Mod.711)	6	--	ED4/39
AS1900D	CLIP, fixing cables, port (Pre Mod.711)	3	--	
AS1900D	CLIP, fixing cables, starboard (Pre Mod.711)	2	--	
AS1900E	CLIP, fixing cables, port	2	--	ED4/40
AS1900E	CLIP, fixing cables, starboard (Pre Mod.711)	1	--	
AS1901A	CLIP, fixing cables, port (Pre Mod.711)	30	--	
AS1901A	CLIP, fixing cables, port (Mod.711)	23	--	
AS1901A	CLIP, fixing cables, starboard	23	--	ED4/41
AS1901C	CLIP, fixing cables, starboard (Pre Mod.711)	4	--	
AS1901C	CLIP, fixing cable (Mod.711)	1	--	ED4/42
AS1901D	CLIP, fixing cables, starboard (Pre Mod.711)	4	--	

R

ELECTRICAL
ELECTRICAL EQUIPMENT IN WINGS

Part Number	1 2 3 4 5 6	Description	No. Off	Matl. Spec.	Plate No.
AS1901D		CLIP, fixing cable, starboard (Mod.711) Attaching parts for EA3.81.1965, AGS1617/9, AS491/20, AS491/24, AS491/36, AS492/34, AS1900C, AS1900D, AS1900E, AS1901A, AS1901C and AS1901D:	1	—	ED4/43
A25/1B		Bolt, 4BA	QR	—	ED4/44
A25/2B		Bolt, 4BA	QR	—	ED4/45
A25/5B		Bolt, 4BA	QR	—	ED4/46
AGS2001B1		Nut, 4BA	QR	—	ED4/47
SP15B		Washer	QR	—	ED4/48
EA3.81.1257		CLIP, half (Pre Mod.711) Attaching parts for EA3.81.1257:	4	—	
A25/10B		Bolt, 4BA	2	—	
AGS2001B1		Nut, stiff, 4BA	2	—	
C7TS1		COIL, ignition booster (Pre Mod.711)	2	—	
EA1.81.563		FAIRLEAD (PRE MOD.711) Attaching parts for EA1.81.563:	1	—	
A25/1B		Bolt, 4BA	6	—	
EA3.81.1963		FERRULE (PRE MOD.711)	1	—	
EA3.81.561		FAIRLEAD Attaching parts for EA3.81.561:	1	—	ED4/49
A25/1B		Bolt, 4BA	6	—	ED4/50
DEF.STD.59/10		GREASE, silicon, type XG250 (Mod.711)	QR	—	
DEF.STD.68/10		REPELLANT, water, PX24 (Mod.711)	QR	—	
EA1.81.25		ELECTRICAL EQUIPMENT, IN INNER WING, REAR, PORT, ASSEMBLY	1	—	
EA1.81.26		ELECTRICAL EQUIPMENT, IN INNER WING, REAR, STARBOARD, ASSEMBLY Spares for: Are identical for port and starboard except where shown otherwise:	1	—	
EA1.81.131		BOX, JUNCTION NO.9, PORT, ASSEMBLY	1	—	ED5/1
EA3.81.2513		BOX, JUNCTION NO.10, STARBOARD ASSEMBLY Each consisting of the following except where shown otherwise:	1	—	ED5/2
703-1-00249		BLOCK, terminal, 20 way, port	1	—	ED5/3
703-2-00249		BLOCK, terminal, 20 way, starboard	1	—	ED5/4
EA1.81.589		BOX, junction	1	—	ED5/5
508-4-11290-004		GASKET	1	—	ED5/6
Z22634		GROMMET, Helsyn, dummy	3	—	ED5/7
EA1.81.598		LID, JUNCTION BOX, PORT	1	—	ED5/8
EA1.81.598D		LID, JUNCTION BOX, STARBOARD Spares for:	1	—	ED5/9
EA1.81.591		COVER, ASSEMBLY Spares for:	1	—	ED5/10
EA1.81.593		FLANGE, inner, lid	1	—	ED5/11
EA1.81.591A		RUBBER, synthetic 0.14" dia x 18" long	1	DTD552	ED5/12
EA1.81.592		SHELL, lid Attaching parts for EA1.81.591:	1	—	ED5/13
EEAS117/1		Screw	4	—	ED5/14
EEAS28/2CU		Washer	8	DTD126A	ED5/15
EEAS42		Washer, leather	4	—	ED5/16

R
R

ELECTRICAL
ELECTRICAL EQUIPMENT IN WINGS

Part Number	Description	No. Off	Matl. Spec.	Plate No.
703-2-00252	. . . LINK, commoning, 2 way	1	—	ED5/17
703-2-00260	. . . LINK, connecting, transverse, port	1	—	ED5/18
A27AP	. . . NUT, 6BA	4	—	ED5/19
A43B28	. . . SCREW, 4BA	2	—	ED5/20
A32A12	. . . SCREW, 6BA	4	—	ED5/21
EEAS146C	. . . SLEEVE, 3/8" long x 3 mm i/d, yellow, port	15	—	
SL2/3	. . . SLEEVE, 1/2" long, yellow, starboard	13	—	
PT1206	. . . WASHER, port	2	—	ED5/22
AGS2035B	. . . WASHER, shakeproof 4BA, starboard	2	—	ED5/23
SP47A	. . . WASHER, spring 6BA	4	—	ED5/24
	Attaching parts for EA1.81.131 and EA3.81.2513:			
A25/5C	. . . Bolt, 2BA	3	—	ED5/25
A25/6C	. . . Bolt, 2BA	1	—	ED5/26
A27CP	. . . Nut, 2BA	4	—	ED5/27
EA1.81.25B	. . . Tube, distance	1	—	ED5/28
EA1.81.25D	. . . Tube, distance	3	—	ED5/29
SP47C	. . . Washer, 2BA, spring	4	—	ED5/30
A25/1B	. . . BOLT, 4BA, earthing cable	1	—	ED5/31
EA1.81.132	. . . BOX, JUNCTION, NO.10, STARBOARD ASSEMBLY (PRE MOD.272) (Alt. R60/118)	1	—	
EA1.81.25A	. . . CHANNEL, 10.4" long Attaching parts for EA1.81.25A:	1	DTD380	ED5/32
A25/1C	. . . Bolt, 2BA	1	—	ED5/33
A27CP	. . . Nut, 2BA	1	—	ED5/34
SP47C	. . . Washer, spring	1	—	ED5/35
AS491/18	. . . CLIP, fixing cables, starboard	2	—	ED5/36
AS491/22	. . . CLIP, fixing cables	2	—	ED5/37
AS491/31	. . . CLIP, fixing cables	4	—	ED5/38
AS491/39	. . . CLIP, fixing cables	2	—	ED5/39
AS1900D	. . . CLIP, fixing cables Attaching parts for AS491/18, AS491/22, AS491/31, AS491/39 and AS1900D:	1	—	ED5/40
A25/1B	. . . Bolt, 4BA	QR	—	ED5/41
AGS2001B1	. . . Nut, 4BA	QR	—	ED5/42
SP47B	. . . Washer, 4BA, spring	QR	—	ED5/43
6A/4332834	. . . COMPENSATOR, cold junction, type B Attaching parts for Compensator type B:	1	—	ED5/44
A25/2A	. . . Bolt, 6BA	4	—	ED5/45
EA3.81.1473	. . . FAIRLEAD, at ribs 5 and 6 Attaching parts for EA3.81.1473:	2	—	ED5/46
A25/9B	. . . Bolt, 4BA	3	—	ED5/47
AGS2001B1	. . . Nut, 4BA	3	—	ED5/48
A27BT	. . . Nut, 4BA	3	—	ED5/49
SP15B	. . . Washer, 4BA	3	—	ED5/50
AGS2001B1	. . . NUT, 4BA, for earthing cable bolt	1	—	ED5/51
EEAS132/7	. . . STRAP, cable, c/w buckle (7" long) Attaching parts for EEAS132/7:	1	—	ED5/52
AS1248/3B	. . . Bolt, 4BA	1	—	ED5/53
ASG2001B1	. . . Nut, 4BA	1	—	ED5/54
EEAS73	. . . Plate, clamp	1	L72	ED5/55
EEAS132/9	. . . STRAP, cable, c/w buckle (9" long) Attaching parts for EEAS132/9:	3	—	ED5/56
AS1248/3B	. . . Bolt, 4BA	1	—	ED5/57
AGS2001B1	. . . Nut, 4BA	1	—	ED5/58
EEAS73	. . . Plate, clamp	1	L72	ED5/59

ELECTRICAL

ELECTRICAL EQUIPMENT IN WINGS

Part Number	Description	No. Off	Matl. Spec.	Plate No.
EA1.81.25C	. . . WASHER, for earthing cable bolt	1	Alum.	ED5/60
SP47B	. . . WASHER, 4BA, spring, for earthing cable bolt	1	—	ED5/61
EA3.81.551	. . . ELECTRICAL EQUIPMENT, ON LEADING EDGE PORT, ASSEMBLY (PRE MOD.714)	—	—	
EA3.81.2647	. . . ELECTRICAL EQUIPMENT, ON LEADING EDGE PORT, ASSEMBLY (MOD.714)	—	—	
EA3.81.552	. . . ELECTRICAL EQUIPMENT, ON LEADING EDGE STARBOARD, ASSEMBLY (PRE MOD.714)	—	—	
EA3.81.2648	. . . ELECTRICAL EQUIPMENT, ON LEADING EDGE, STARBOARD, ASSEMBLY (MOD.714)	—	—	
	Spares for:			
EA3.81.5893	. . . BOX, JUNCTION NO.7, PORT, ASSEMBLY (PRE MOD.4797)	1	—	ED6/10
EA3.81.3263	. . . BOX, JUNCTION NO.7, PORT, ASSEMBLY (MOD.4797)	1	—	
EA3.81.5875	. . . BOX, JUNCTION NO.8, STARBOARD, ASSEMBLY (PRE MOD.4797)	1	—	ED6/11
EA3.81.3265	. . . BOX, JUNCTION NO.8, STARBOARD, ASSEMBLY (MOD.4797)	1	—	
	Spares for:			
703-1-00249	. . . BLOCK, terminal, 20 way Attaching parts for 703-1-00249:	2	—	ED6/12
A43B24	. . . Screw, 4BA	2	—	ED6/13
EA1.81.583	. . . BOX, junction, 40 way, complete Attaching parts for EA1.81.583:	1	—	ED6/14
A25/2C	. . . Bolt, 2BA	4	—	ED6/15
AGS2001C1/66	. . . Nut, stiff, 2BA	4	—	ED6/16
SP13C	. . . Washer	4	—	ED6/17
SP16C	. . . Washer	4	—	ED6/18
EA1.81.597D	. . . COVER, ASSEMBLY, PORT	1	—	ED6/19
EA1.81.597E	. . . COVER, ASSEMBLY, STARBOARD Attaching parts for EA1.81.597D and EA1.81.597E:	1	—	ED6/20
EEAS117/1	. . . Screw	6	S92	ED6/21
EEAS28/2CU	. . . Washer	12	DTD124A	ED6/22
EEAS42	. . . Washer	6	Leather	ED6/23
PLESSEY				
508-4-11290-004	. . . GASKET	2	—	ED6/24
508-4-11290-005	. . . GASKET	2	—	ED6/25
Z22634	. . . GROMMET, Helsyn, dummy, starboard	4	—	ED6/26
PLESSEY				
703-2-00254	. . . LINK, 5 way, port	1	—	ED6/27
PLESSEY				
703-2-00251	. . . LINK, 4 way, starboard	2	—	ED6/28
508-1-06413	. . . PLUG, 26 way, size D (Pre Mod.3377)	2	—	ED6/29
508-1-06413	. . . PLUG, 26 way, size D (Mod.3377)	2	—	
PLESSEY				
508-1-06405	. . . PLUG, 12 way, size C (Pre Mod.3377)	1	—	ED6/30
508-1-06405	. . . PLUG, 12 way, size C (Mod.3377)	1	—	
508-1-06406	. . . PLUG, 14 way, size C (Pre Mod.3377)	1	—	ED6/31
508-1-06406	. . . PLUG, 14 way, size C (Mod.3377)	1	—	
EEAS146/6	. . . SLEEVE, 3/8" long	QR	—	

AP101B-0402-3A

ELECTRICAL

ELECTRICAL EQUIPMENT IN WINGS

Part Number	Description	No. Off	Matl. Spec.	Plate No.
EEAS146/20	. . . SLEEVE, 1" long	QR	—	
SIEGRIST-OREL SL2/3	. . . SLEEVE, ¼" long, yellow	QR	—	
SIEGRIST-OREL SL2/3	. . . SLEEVE, ¾" long, yellow	QR	—	
508-2-11232-002	. . . SLEEVE, 4-7 amp	QR	—	
703-2-00339-020	. . . THIMBLE, 4 amp	QR	—	
703-2-00340-020	. . . THIMBLE, 7 amp	QR	—	
703-2-00341-020	. . . THIMBLE, 19 amp	QR	—	
703-2-00315-020	. . . TAG, QR, 4 amp	QR	—	
703-2-00316-020	. . . TAG, QR, 7 amp	QR	—	
703-2-00317-020	. . . TAG, QR, 19 amp	QR	—	
EA3.81.559	. . . BRACKET, air thermo mounting, port	1	—	ED6/32
SANGAMO WESTON S110 FORM 4. TYPE 'A'	. . . BULB, thermo, 2¼" long, port	1	—	ED6/33
SANGAMO WESTON S110 FORM 4	. . . CABLE, thermo assembly, 8 ft long, port	1	—	ED6/34
SP91J	. . . CLIP, hose	1	—	ED7/1
AS491/29	. . . CLIP, fixing cables, port	2	—	ED7/2
AS491/31	. . . CLIP, fixing cables, port	2	—	ED7/3
AS492/35	. . . CLIP, fixing cables	1	—	ED7/4
AS1900D	. . . CLIP, fixing cables	1	—	ED7/5
AS1900F	. . . CLIP, fixing cables, starboard	2	—	ED7/6
AS1901A	. . . CLIP, fixing cables	1	—	ED7/7
AS1901B	. . . CLIP, fixing cables, port (Pre Mod.714)	5	—	ED7/8
AS1901B	. . . CLIP, fixing cables, port (Mod.714)	6	—	
AS1901D	. . . CLIP, fixing cables	1	—	ED7/9
AS3181/24B	. . . CLIP, fixing cables	1	—	ED7/10
AS4526/18	. . . CLIP, fixing cables (Mod.714)	1	—	
	Attaching parts for AS491/29, AS491/31, AS492/35, AS1900D, AS1900F, AS1901A, AS1901B, AS1901D, AS3181/24B and AS4526/18:			
AS1246/1B	. . . Bolt, 4BA	QR	—	ED7/11
A25/1B	. . . Bolt, 4BA	QR	—	ED7/12
A25/1C	. . . Bolt, 2BA, starboard	QR	—	ED7/13
AGS2001B1	. . . Nut, 4BA	QR	—	ED7/14
AGS2002B1	. . . Nut, stiff, 4BA	QR	—	ED7/15
AGS2001C1/66	. . . Nut, 2BA, starboard	QR	—	ED7/16
A27BP	. . . Nut, 4BA	QR	—	ED7/17
SP47B	. . . Washer, spring	QR	—	ED7/18
EEAS21/2ER	. . . Washer, 'D'	QR	—	ED7/19
EA1.81.981	. . . FAIRLEAD	1	—	ED7/20
EA1.81.983	. . . FAIRLEAD	1	—	ED7/21
	Attaching parts for EA1.81.981 and EA1.81.983:			
A25/2C	. . . Bolt, 2BA	6	—	ED7/22
SP15C	. . . Washer	6	—	ED7/23
EA1.81.989	. . . FAIRLEAD, for air mileage unit cables, port	1	—	ED7/24
	Attaching parts for EA1.81.989:			
A25/1B	. . . Bolt, 4BA	6	—	ED7/25
A27BP	. . . Nut, 4BA	6	—	ED7/26
SP47B	. . . Washer, 4BA	6	—	ED7/27
EA1.81.991	. . . FAIRLEAD, half, at rib No.1 port	1	—	ED7/28
EA1.81.987	. . . FAIRLEAD, half, at rib No.1 starboard	1	—	ED7/29
	Attaching parts for EA1.81.991 and EA1.81.987:			
A25/2C	. . . Bolt, 2BA	3	—	ED7/30
A27CT	. . . Nut, thin, 2BA	3	—	ED7/31
SP47C	. . . Washer, spring	3	—	ED7/32

ELECTRICAL
ELECTRICAL EQUIPMENT IN WINGS

Part Number	Description	No. Off	Mati. Spec.	Plate No.
EA3.81.2441	. . . FAIRLEAD, half Attaching parts for EA3.81.2441:	2	—	ED7/33
A25/3B	. . . Bolt, 4BA	3	—	ED7/34
AGS2001B1	. . . Nut, stiff, 4BA	3	—	ED7/35
SP15B	. . . Washer	3	—	ED7/36
TDA62-10A	. . . FUSE, 10 amp, high energy ignition	2	—	ED6/35
10H/2073169	. . . FUSEHOLDER, type A	2	—	ED6/36
5U4751	. . . GENERATOR, type P3	1	—	ED6/37
Z22431	. . . GROMMET	1	—	ED7/37
EA1.81.2473	. . . PANEL, MOUNTING, ASSEMBLY	1	—	
EA3.81.2475	Spares for: . . . PANEL, mounting	1	—	ED6/38
SIEGRIST-OREL SL2/3	. . . SLEEVE, 3/4" long, yellow, port (Pre Mod.714)	2	—	
EEAS146A	. . . SLEEVE, 3/4" long, yellow, port (Mod.714)	2	—	
SIEGRIST-OREL SL3/3	. . . SLEEVE, 3/4" long, yellow, port (Pre Mod.714)	2	—	
EEAS146C	. . . SLEEVE, 3/4" long, yellow, port (Mod.714)	2	—	
EEAS132/9	. . . STRAP, c/w buckle, port Attaching parts for EEAS132/9:	6	—	ED7/38
AS1249/1C	. . . Bolt, 2BA	1	—	ED7/39
A29CP	. . . Nut, 2BA	1	—	ED7/40
EA3.81.1955	. . . Piece, packing	1	—	ED7/41
SP47C	. . . Washer, spring	1	—	ED7/41A
EA3.81.6239	. . . STUD, earthing (Alt. R60/65) Attaching parts for EA3.81.6239:	1	—	ED6/43
A54C	. . . Nut, 2BA	2	—	ED6/44
AGS2001C4	. . . Nut, stiff, 2BA	1	—	ED6/45
SP25C	. . . Washer	1	—	ED6/46
SP124D	. . . Washer, packing	2	—	ED6/47
R EL26788	. . . SUPPRESSOR, type X3 Attaching parts for EL26788	1	—	ED6/39
A25/2E	. . . Bolt, 1/4" BSF	4	—	ED6/40
A27EP	. . . Nut, 1/4" BSF	4	—	ED6/41
SP47D	. . . Washer, spring	4	—	ED6/42
703-2-00316-020	. . . TAG, quick release, 7 amp, port	2	—	
703-2-00340-020	. . . THIMBLE, quick release, port	2	—	
TYPE NB25/3 or TYPE NB25/2 or TYPE C10TS/3	. . . UNIT, high energy ignition	2	—	ED7/42
A25/13E	Attaching parts for ignition units: . . . Bolt, 1/4" BSF	3	—	ED7/43
SP15E	. . . Washer, 1/4"	3	—	ED7/44
THORN L1110	. . . FILAMENT, 24V, 240W, port only	1	—	ED3/9
5CX/1515	. . . LAMP, landing, type J, Mk.1 port only	1	—	ED3/10
or R EL43129	. . . LAMP, landing, type J, Mk.2 port only	1	—	
EA3.81.31	. . . LOOMS, CABLE, PORT, ASSEMBLY	—	—	
EB6.81.527	Spares for: . . . CABLE, ASSEMBLY, E7, earthing from junction box 7 (Pre Mod.5097)	1	—	
EA3.81.6199	. . . CABLE, ASSEMBLY, E7, earthing from junction box 7 (Alt. R60/65 — Mod.5097)	1	—	

AP101B-0402-3A

ELECTRICAL

ELECTRICAL EQUIPMENT IN WINGS

Part Number	Description	No. Off	Matl. Spec.	Plate No.	
					1
EB6.81.531	CABLE, ASSEMBLY, E9, earthing, from junction box 9 (Pre Mod.5097)	1	—		
EA3.91.6203	CABLE, ASSEMBLY, E9, earthing, from junction box 9 (Alt. R60/65 — Mod.5097)	1	—		
EA1.81.875/1	CABLE, ASSEMBLY, E11, earthing, from junction box 11 (Pre Mod.5097)	2	—		
EA3.81.6207	CABLE, ASSEMBLY, E11, earthing, from junction box 11 (Alt. R60/65 — Mod.5097)	2	—		
EA3.81.879/2	CABLE, ASSEMBLY, P9, from fuselage connection to junction box 9	1	—		
EA1.81.876/1	CABLE, ASSEMBLY, 7A, from junction box 7 to undercarriage terminal block	1	—		
EA1.81.819/1	CABLE, ASSEMBLY, 7A1, from undercarriage terminal block to undercarriage 'up' switch (Pre Mod.5091)	1	—		
EA1.81.1211	CABLE, ASSEMBLY, 7A1, from undercarriage terminal block to undercarriage 'up' switch (Mod.5091)	1	—		
EB7.81.1295	CABLE, ASSEMBLY, 7A2, from undercarriage terminal block to undercarriage 'down' switch (Pre Mod.5091)	1	—		
EA1.81.1213	CABLE, ASSEMBLY, 7A2, from undercarriage terminal block to undercarriage 'down' switch (Mod.5091)	1	—		
EB7.81.1325	CABLE, ASSEMBLY, 7A3, from undercarriage terminal block to undercarriage 'down' switch (Pre Mod.5091)	1	—		
EA1.81.1215	CABLE, ASSEMBLY, 7A3, from undercarriage terminal block to undercarriage 'down' switch (Mod.5091)	1	—		
EA1.81.881/1	CABLE, ASSEMBLY, 7A4, from undercarriage terminal block to undercarriage door switch (Pre Alt. R60/115 — Pre Mod.5097)	1	—		
EA3.81.873/2	CABLE, ASSEMBLY, 7C, from junction box 7 to air valve actuator	1	—		
EA3.81.5877/2	CABLE, ASSEMBLY, 7F and 7D, from junction box 7 to fire extinguisher	1	—		
EA1.81.878/1	CABLE, ASSEMBLY, 7G, from junction box 7 to desynn transmitter	1	—		
EA1.81.815/2	CABLE, ASSEMBLY, 7H, from junction box 7 to junction box 11	1	—		
EA1.81.817/2	CABLE, ASSEMBLY, 7J, from junction box 7 to junction box 11	1	—		
EA3.81.2453/2	CABLE, ASSEMBLY, 7K, from junction box 7 to high energy ignition unit	1	—		
EA3.81.3267	CABLE, ASSEMBLY, 7KL, from junction box 7 to high energy ignition fuses	1	—		
EA3.81.2455/2	CABLE, ASSEMBLY, 7L, from junction box 7 to high energy ignition unit at junction box 11	1	—		

ELECTRICAL
ELECTRICAL EQUIPMENT IN WINGS

Part Number	Description	No. Off	Matl. Spec.	Plate No.
EA3.81.6717	. . CABLE, ASSEMBLY, 9B, from junction box 9 to wing tip terminal block	1	—	
EA3.81.1591	. . CABLE, ASSEMBLY, 9B1, to jettison tank/nav light contact block	1	—	
EA3.81.1593	. . CABLE, ASSEMBLY, 9B2, from jettison tank/nav light contact block to taxiing lamp	1	—	
EA3.81.895/1	. . CABLE, ASSEMBLY, 9B3, from jettison tank/nav light contact block to nav light terminal block	1	—	
EA3.81.6729	. . CABLE, ASSEMBLY, 9B4, to jettison tank detonator (Pre Mod.4936)	1	—	
EA3.81.6721	. . CABLE, ASSEMBLY, 9B4, to jettison tank detonator (Mod.4936)	1	—	
EA3.81.6731	. . CABLE, ASSEMBLY, 9B5, to jettison tank detonator (Pre Mod.4936)	1	—	
EA3.81.6723	. . CABLE, ASSEMBLY, 9B5, to jettison tank detonator (Mod.4936)	1	—	
EA3.81.877	. . CABLE, ASSEMBLY, 9D, from junction box 9 to landing lamp	1	—	
EA3.81.1469	. . CABLE, ASSEMBLY, 9F, from junction box 9 to cold junction compensator	1	—	
EA3.81.6451	. . CABLE, ASSEMBLY, 11A, B, K and M, all from junction box 11, cable 11A to fuel pressure switch, cable 11B to fuel pump solenoid, cable 11K to engine starter, cable 11M to front fire detectors (Pre Mod.5091)	1	—	
EA3.81.6751	. . CABLE, ASSEMBLY, 11A, B, K and M (Mod.5091)	1	—	
EA3.81.2461/2	. . CABLE, ASSEMBLY, 11D, from junction box 11 to E51 generator (Pre Mod.5091)	1	—	
EA3.81.6771	. . CABLE, ASSEMBLY 11D, from junction box 11 to E51 generator (Mod.5091)	1	—	
EA3.81.2463/2	. . CABLE, ASSEMBLY, 11F, from junction box 11 to oil pressure transmitter (Pre Mod.5091)	1	—	
EA1.81.6773	. . CABLE, ASSEMBLY, 11F, from junction box 11 to oil pressure transmitter	1	—	
EA3.81.6441	. . CABLE, ASSEMBLY, 11M1, interconnection between fire detectors (Pre Mod.5091)	1	—	
EA3.81.6741	. . CABLE, ASSEMBLY, 11M1, interconnection between fire detectors (Mod.5091)	1	—	
EA3.81.6443	. . CABLE, ASSEMBLY, 11M2, interconnection between fire detectors (Pre Mod.5091)	1	—	
EA3.81.6743	. . CABLE, ASSEMBLY, 11M2, interconnection between fire detectors (Mod.5091)	1	—	
EA3.81.6453	. . CABLE, ASSEMBLY, 11R, from junction box 11 to rear fire detectors (Pre Mod.5091)	1	—	
EA3.81.6753	. . CABLE, ASSEMBLY, 11R, from junction box 11 to rear fire detectors (Mod.5091)	1	—	
EA3.81.6445	. . CABLE, ASSEMBLY, 11R1, interconnecting between fire detectors (Pre Mod.5091)	1	—	
EA3.81.6745	. . CABLE, ASSEMBLY, 11R1, interconnecting between fire detectors (Mod.5091)	1	—	

AP101B-0402-3A

ELECTRICAL
ELECTRICAL EQUIPMENT IN WINGS

Part Number	Description	No. Off	Matl. Spec.	Plate No.
EA3.81.6447	. . . CABLE, ASSEMBLY, 11R2, interconnecting between fire detectors (Pre Mod.5091)	1	—	
EA3.81.6747	. . . CABLE, ASSEMBLY, 11R2, interconnecting between fire detectors (Mod.5091)	1	—	
EA3.81.6449	. . . CABLE, ASSEMBLY, 11R3, interconnecting between fire detectors (Pre Mod.5091)	1	—	
EA3.81.6749	. . . CABLE, ASSEMBLY, 11R3, interconnecting between fire detectors (Mod.5091)	1	—	
R EA3.81.6799	. . . CABLE, ASSEMBLY, from generator to suppressor (Alt. R60/51 — Mod.5097)	1	—	
AGS1725/1	. . . DISC, blanking	2	—	
R TYPE B	. . . LEAD, extension for thermocouples	4	—	
EA3.81.2437	. . . LEAD, H.T. ignition, from high energy ignition unit at junction box 11 to ignition plug	1	—	
EA3.81.2439	. . . LEAD, H.T. ignition, from high energy ignition unit to ignition plug	1	—	
AGS1658/1	. . . NUT, cable gland	2	—	
R EA3.81.32	. . . LOOMS, CABLE, STARBOARD, ASSEMBLY Spares for:	—	—	
EB6.81.529	. . . CABLE, ASSEMBLY, EB, earthing, from junction box 8 (Pre Mod.5097)	1	—	
EA3.81.6201	. . . CABLE, ASSEMBLY, EB, earthing, from junction box 8 (Alt. R60/65 — Mod.5097)	1	—	
EB6.81.533	. . . CABLE, ASSEMBLY, E10, earthing, from junction box 10 (Pre Mod.5097)	1	—	
EA3.81.6205	. . . CABLE, ASSEMBLY, E10, earthing from junction box 10 (Alt. R60/65 — Mod.5097)	1	—	
EA1.81.870/1	. . . CABLE, ASSEMBLY, E12, earthing, from junction box 12 (Pre Mod.5097)	2	—	
EA3.81.6209	. . . CABLE, ASSEMBLY, E12, earthing, from junction box 12 (Alt. R60/65 — Mod.5097)	2	—	
R EA3.81.880/2	. . . CABLE, ASSEMBLY, S10, from fuselage connection to junction box 10 (Pre Mod.272) (Pre Alt.R60/118)	1	—	
EA3.81.2431/2	. . . CABLE, ASSEMBLY, S10, from fuselage connection to junction box 10	1	—	
EA1.81.871/1	. . . CABLE, ASSEMBLY, 8A, from junction box 8 to undercarriage terminal block	1	—	
EA1.81.820/1	. . . CABLE, ASSEMBLY, 8A1, from undercarriage terminal block to undercarriage 'up' switch (Pre Mod.5091)	1	—	
EA1.81.1217	. . . CABLE, ASSEMBLY, 8A1, from undercarriage terminal block to undercarriage 'up' switch (Mod.5091)	1	—	
EB7.81.1327	. . . CABLE, ASSEMBLY, 8A2, from undercarriage terminal block to undercarriage 'down' switch (Pre Mod.5091)	1	—	
EA1.81.1219	. . . CABLE, ASSEMBLY, 8A2, from undercarriage terminal block to undercarriage 'down' switch (Pre Mod.5091)	1	—	
EB7.81.1329	. . . CABLE, ASSEMBLY, 8A3, from undercarriage terminal block to undercarriage 'down' switch (Pre Mod.5091)	1	—	
EA1.81.1221	. . . CABLE, ASSEMBLY, 8A3, from undercarriage terminal block to undercarriage 'down' switch (Mod.5091)	1	—	

ELECTRICAL
ELECTRICAL EQUIPMENT IN WINGS

Part Number	Description	No. Off	Matl. Spec.	Plate No.
EA1.81.829/1	. . CABLE, ASSEMBLY, 8A4, from undercarriage terminal block to oleo switch contact block	1	—	
EB7.81.1331	. . CABLE, ASSEMBLY, 8A5, from oleo switch contact block to oleo switch (Pre Mod.5091)	1	—	
EA1.81.1223	. . CABLE, ASSEMBLY, 8A5, from oleo switch contact block to oleo switch (Mod.5091)	1	—	
EA3.81.5879/2	. . CABLE, ASSEMBLY, 8F, 8D, from junction box 8 to fire extinguisher	1	—	
EA1.81.816/2	. . CABLE, ASSEMBLY, 8H, from junction box 8 to junction box 10	1	—	
EA1.81.818/2	. . CABLE, ASSEMBLY, 8J, from junction box 8 to junction box 12	1	—	
EA3.81.2457/2	. . CABLE, ASSEMBLY, 8K, from junction box 8 to high energy ignition unit	1	—	
EA3.81.2459/2	. . CABLE, ASSEMBLY, 8L, from junction box 8 to high energy ignition unit at junction box 12	1	—	
EA3.81.3269	. . CABLE, ASSEMBLY, 8KL, from junction box 8 to high energy ignition fuses	1	—	
EA3.81.6719	. . CABLE, ASSEMBLY, 10B, from junction box 10 to jettison tank/nav light contact block	1	—	
EA3.81.1592	. . CABLE, ASSEMBLY, 10B1, to jettison tank/nav light contact block	1	—	
EA3.81.1594	. . CABLE, ASSEMBLY, 10B2, from jettison tank/nav light contact block to taxiing lamp	1	—	
EA3.81.896/1	. . CABLE, ASSEMBLY, 10B3, from jettison tank/nav light contact block to nav light terminal block	1	—	
EA3.81.6725	. . CABLE, ASSEMBLY, 10B4, to jettison tank detonator (Pre Mod.4936)	1	—	
EA3.81.6733	. . CABLE, ASSEMBLY, 10B4, to jettison tank detonator (Mod.4936)	1	—	
EA3.81.6727	. . CABLE, ASSEMBLY, 10B5, to jettison tank detonator (Pre Mod.4936)	1	—	
EA3.81.6735	. . CABLE, ASSEMBLY, 10B5, to jettison tank detonator (Mod.4936)	1	—	
EA3.81.1470	. . CABLE, ASSEMBLY, 10F, from junction box 10 to cold junction compensator	1	—	
EA3.81.2433	. . CABLE, ASSEMBLY, 10G, from junction box 10 to dive brake jack micro switches	1	—	
EA3.81.6467	. . CABLE, ASSEMBLY, 12A, B, K, M, all from junction box 12, cable 12A to fuel pressure switch, cable 12B to fuel pump solenoid, cable 12K to engine starter, cable 12M to front fire detectors (Pre Mod.5091)	1	—	
EA3.81.6767	. . CABLE, ASSEMBLY, 12A, B, K, M (Mod.5091)	1	—	
EA3.81.2467/2	. . CABLE, ASSEMBLY, 12D, from junction box 12 to E.S.I. generator (Pre Mod.5091)	1	—	
EA3.81.6775	. . CABLE, ASSEMBLY, 12D, from junction box 12 E.S.I. generator (Mod.5091)	1	—	

AP101B-0402-3A

Page ED.13

ELECTRICAL
ELECTRICAL EQUIPMENT IN WINGS

Part Number	Description	No. Off	Matl. Spec.	Plate No.
EA3.81.2469/2	. . CABLE, ASSEMBLY, 12F, from junction box 12 to oil pressure transmitter (Pre Mod.5091)	1	—	
EA3.81.6777	. . CABLE, ASSEMBLY, 12F, from junction box 12 to oil pressure transmitter (Mod.5091)	1	—	
EA3.81.6455	. . CABLE, ASSEMBLY, 12M1, interconnection between fire detectors (Pre Mod.5091)	1	—	
EA3.81.6755	. . CABLE, ASSEMBLY, 12M1, interconnection between fire detectors (Mod.5091)	1	—	
EA3.81.6457	. . CABLE, ASSEMBLY, 12M2, interconnection between fire detectors (Mod.5091)	1	—	
EA3.81.6757	. . CABLE, ASSEMBLY, 12M2, interconnection between fire detectors (Mod.5091)	1	—	
EA3.81.6459	. . CABLE, ASSEMBLY, 12M3, interconnection between fire detectors (Pre Mod.5091)	1	—	
EA3.81.6759	. . CABLE, ASSEMBLY, 12M3, interconnection between fire detectors (Mod.5091)	1	—	
EA3.81.6469	. . CABLE, ASSEMBLY, 12R, from junction box 12 to rear fire detectors (Pre Mod.5091)	1	—	
EA3.81.6769	. . CABLE, ASSEMBLY, 12R, from junction box 12 to rear fire detectors (Mod.5091)	1	—	
EA3.81.6461	. . CABLE, ASSEMBLY, 12R1, interconnection between rear fire detectors (Pre Mod.5091)	1	—	
EA3.81.6761	. . CABLE, ASSEMBLY, 12R1, interconnection between rear fire detectors (Mod.5091)	1	—	
EA3.81.6463	. . CABLE, ASSEMBLY, 12R2, interconnection between rear fire detectors (Pre Mod.5091)	1	—	
EA3.81.6763	. . CABLE, ASSEMBLY, 12R2, interconnection between rear fire detectors (Mod.5091)	1	—	
EA3.81.6465	. . CABLE, ASSEMBLY, 12R3, interconnection between rear fire detectors (Pre Mod.5091)	1	—	
EA3.81.6765	. . CABLE, ASSEMBLY, 12R3, interconnection between rear fire detectors (Mod.5091)	1	—	
EA3.81.6799	. . CABLE, ASSEMBLY, from generator to suppressor	1	—	
AGS1725/1	. . DISC, blanking	2	—	
L2-268	. . LEAD, extension, for thermocouples	4	—	
EA3.81.2437	. . LEAD, H.T. ignition	1	—	
EA3.81.2439	. . LEAD, H.T. ignition	1	—	
AGS1658/1	. . NUT, cable gland	2	—	
EA3.81.42	. . LOOMS, CABLE, INSTRUMENT, STARBOARD, ASSEMBLY Spares for:	—	—	
EA3.81.917	. . CABLE, ASSEMBLY, D1A-D1, from G4B compass junction box to G4B compass detector unit	—	—	
EA3.81.919	. . CABLE, ASSEMBLY, D1B-D1A, from wing root connection to G4B compass junction box	1	—	

R

ELECTRICAL
ELECTRICAL EQUIPMENT IN WINGS

Part Number	1 2 3 4 5 6	Description	No. Off	Mati. Spec.	Plate No.
EK5.81.1011		WIRING JET PIPE THERMOCOUPLES, PORT, ASSEMBLY (ALT. R60/313 - MOD.5097)	—	—	
EK5.81.1012		WIRING JET PIPE THERMOCOUPLES, STARBOARD, ASSEMBLY (ALT. R60/313 - MOD.5097) Spares for:- Are identical for port and starboard assemblies except where shown otherwise:	—	—	
R EA3.81.3253		BOBBIN (Alt. R60/303 - Mod.5097) Attaching parts for EA3.81.3253:	2	—	
AS2811/5/040		Piece, distance	1	—	
AS1242/13C		Screw, 2BA	1	—	
SIS1564		BLOCK, terminal, type B No.1 (Pre Mod.5097) Attaching parts for SIS1564:	4	—	ED8/1
A33A16		Screw 6 BA	2	—	ED8/2
BROWN BROS. AV/W50		CLIP, thermocouple leads (Pre Mod.5097)	3	—	ED8/3
EEAS91/1		CLIP 'P', fixing cables (Alt.R60/313 - Mod.5097) Attaching parts for EEAS91/1:	1	—	
A27CP		Nut, 2BA	1	—	
A27CT		Nut, thin, 2BA	1	—	
A31C40		Screw, 2BA	1	—	
SP15C		Washer	1	—	
SP126D		Washer	1	—	
EEAS237/7A		Washer, 'D'	1	—	
AS491/20		CLIP, 'P' fixing cables (Pre Mod.5097) Attaching parts for AS491/20:	2	—	ED8/4
A36B12		Screw 4 BA	1	—	ED8/5
SP47B		Washer, spring 4BA starboard	1	—	ED8/6
AS3181/7C		CLIP, 'P' fixing cables (Alt. R60/313 - Mod.5097) Attaching parts for AS3181/7C:	2	—	
AGS2002C1		Nut, stiff, 2BA	1	—	
A27CP		Nut, 2BA	1	—	
A27CT		Nut, thin 2BA	1	—	
A31C36		Screw, 2BA	1	—	
SP15C		Washer	1	—	
SP126D		Washer	1	—	
EEAS238/2A		Washer, 'D'	1	—	
EA1.73.93		FAIRLEAD, port (Alt.R60/313 - Mod.5097)	1	—	
EA1.73.94		FAIRLEAD, starboard (Alt.R60/313 - Mod.5097) Attaching parts for EA1.73.93 and EA1.73.94:	1	—	
AS1248/12B		Bolt, 4BA	2	—	
A27BP		Nut, 4BA	2	—	
SP47B		Washer, spring	2	—	

ELECTRICAL

ELECTRICAL EQUIPMENT IN WINGS

Part Number	Description	No. Off	Matl. Spec.	Plate No.
EA1.81.23	. WIRING, MAIN UNDERCARRIAGE, PORT, ASSEMBLY	—	—	
EA1.81.24	. WIRING, MAIN UNDERCARRIAGE, STARBOARD ASSEMBLY Spares for:— Are identical for port and starboard except where shown otherwise:—	—	—	
R E & I 7049	. . BLOCK, terminal, 5 way type B No. 1	1	—	EB8/7
R 1240	. . BLOCK, terminal, 2 way type B No. 1 starboard Attaching parts for E & I 7049, 1240:—	2	—	ED8/8
R A27AP	. . Nut, 6BA	2	—	ED8/9
A33A20	. . Screw, 6BA	2	—	ED8/10
SP47A	. . Washer, spring	2	—	ED8/11
AS3180/4B	. . CLIP, 'P' fixing cables	1	—	ED8/12
AS3180/5B	. . CLIP, 'P' fixing cables, starboard	4	—	ED8/13
AS3180/7B	. . CLIP, 'P' fixing cables, port	1	—	ED8/14
AS3180/8B	. . CLIP, 'P' fixing cables, port	2	—	ED8/15
AS3180/9B	. . CLIP, 'P' fixing cables, starboard	1	—	ED8/16
AS3180/10B	. . CLIP, 'P' fixing cables, starboard	2	—	ED8/17
AS3180/3C	. . CLIP, 'P' fixing cables, port	5	—	ED8/18
AS3180/6C	. . CLIP, 'P' fixing cables, starboard	1	—	ED8/19
AS3180/7C	. . CLIP, 'P' fixing cables, port	1	—	ED8/20
AS3180/8C	. . CLIP, 'P' fixing cables, starboard Attaching parts for AS3180/4B, AS3180/5B, AS3180/7B, AS3180/8B, AS3180/9B, AS3180/10B, AS3180/3C, AS3180/6C, AS3180/7C and AS3180/8C:—	4	—	ED8/21
A25/1B	. . Bolt, 4BA	QR	—	ED8/22
A27AP	. . Nut, 4BA	QR	—	ED8/23
A32B8	. . Screw, 4BA	QR	—	ED8/24
SP47B	. . Washer, spring	QR	—	ED8/25
SP55B	. . Washer, spring	QR	—	ED8/26
BAS/DMS/3	. . PLATE, cable support, up-lock micro switch (C/Mod/Can/0443/STC) (Mod 5180)	1	L73	
R DOWTY				
DN1322Z Mk 2	. . SWITCH, micro, Mk. 2, port (Pre-Mod 4959)	1		
R DOWTY				
DN1322Z Mk 3	. . SWITCH, micro Mk. 3 port (Mod 4959)	2	—	ED8/32
R DOWTY				
DN1322Z Mk 2	. . SWITCH, micro, Mk. 2, starboard (Pre-Mod 4959)	1	—	
R DOWTY				
DN1322Z Mk 3	. . SWITCH, micro Mk. 3 starboard (Mod 4959) Attaching parts for DN1322Z Mk. 2 and Mk. 3:—	3	—	ED8/33
EA1.20.1245	. . Bolt, special	2	—	ED8/27
A25/6B	. . Bolt, 4BA (Pre-Mod 5180)	2	—	ED8/28
A25/7B	. . Bolt, 4BA (C/Mod/Can/0443/STC) (Mod 5180)	2	—	
A27CP	. . Nut, 2BA	2	—	ED8/29
AGS2035B	. . Washer, 4BA shakeproof (Pre-Mod 5180)	2	—	ED8/30
SP47B	. . Washer, spring (C/Mod/Can/0443/STC) (Mod 5180)			
SP13B	. . Washer (C/Mod/Can/0443/STC) (Mod 5180)	2	—	
AGS2035C	. . Washer, 2BA shakeproof	2	—	ED8/31

ELECTRICAL
ELECTRICAL EQUIPMENT IN WINGS

Part Number	Description	No. Off	Matl. Spec.	Plate No.
EA3.81.93	. WIRING, AND ELECTRICAL EQUIPMENT, OUTBOARD OF RIB 8, PORT, ASSEMBLY	—	—	
EA3.81.94	. WIRING, AND ELECTRICAL EQUIPMENT, OUTBOARD OF RIB 8, STARBOARD, ASSEMBLY Spares for:— Are identical for port and starboard except where shown otherwise:—	—	—	
EA1.81.1047	. . BLOCK, contact, assembly	1	—	ED9/1
703-1-00228	. . BLOCK, terminal, type J 2 way	1	—	ED9/2
703-1-00234	. . BLOCK, terminal, type J 3 way Attaching parts for 703-1-00228 and 703-1-00234:—	1	—	ED9/3
A43B24	. . Screw, 4BA	2	—	ED9/4
E & I 7049	. . BLOCK, terminal, type B No. 1 Attaching parts for E & I 7049:—	1	—	ED9/5
A33A20	. . Screw, csk. head, 6BA	2	—	ED9/6
EA3.81.2649	. . BRACKET, starboard	1	—	ED9/7
EEAS133	. . BRACKET	2	—	ED9/8
AS3180/4B	. . CLIP, cable	2	—	ED9/9
AS3180/6B	. . CLIP, cable	3	—	ED9/10
AS3180/7B	. . CLIP, cable	2	—	ED9/11
AS3180/8B	. . CLIP, cable	5	—	ED9/12
AS3180/11B	. . CLIP, cable Attaching parts for AS3180/4B, AS3180/6B, AS3180/7B, AS3180/8B and AS3180/11B:—	1	—	ED9/13
A25/1B	. . Bolt, 4BA	QR	—	ED9/14
A27BP	. . Nut, 4BA	QR	—	ED9/15
6R 1/4	. . Screw, P.K.	QR	—	ED9/16
SP47B	. . Washer, spring, 4BA	QR	—	ED9/17
EA3.81.2653	. . CLIP, socket support, starboard Attaching parts for EA3.81.2653:—	1	—	ED9/18
A61/2C	. . Bolt, 2BA	2	—	ED9/19
R EH7.81.745	. . PLATE, base resistor assembly (Mod 4063)	1	—	ED9/20
R EH7.81.743	. . PLATE, base resistor assembly (Mod 4063)	1	—	ED9/21
R 10W0241026	. . RESISTOR, 15 ohms, 25 watts, Welwyn Type 1602	3	—	ED9/22
EEAS146/20	. . SLEEVE, 3/4" long	QR	—	
NY18007	. . STRAP	QR	—	ED9/23
NY3342	. . STUD	QR	—	ED9/24
HC294	. . TAG	2	—	ED9/25
ROSS COURTNEY P85846/1	. . TAG, terminal, type OO	5	—	
EA3.81.1663	. WIRING, RIB 2-2B, OUTER WING, PORT, ASSEMBLY Spares for:—	—	—	
AS1900C	. . CLIP, fixing cables Attaching parts for AS1900C:—	5	—	ED9/26
A25/1B	. . Bolt, 4BA	1	—	ED9/27
A27BP	. . Nut, 4BA	1	—	ED9/28
SP47B	. . Washer, 4BA	1	—	ED9/29

ELECTRICAL EQUIPMENT IN WINGS

Part Number	Description	No. Off	Matl. Spec.	Plate No.
EA3.81.1664	. WIRING, RIB 2-2B, OUTER WING, STARBOARD, ASSEMBLY Spares for:—	—	—	
EA3.81.1537	. . BOX, JUNCTION G4B, ASSEMBLY Spares for:—	1	—	ED9/30
703-1-00232	. . . BLOCK, terminal Attaching parts for 703-1-00232:—	4	—	ED9/31
AGS2001B1	. . . Nut, 4BA	2	—	ED9/32
A31B28	. . . Screw, 4BA	2	—	ED9/33
EA3.81.1539	. . . BOX, junction	1	—	ED9/34
EA3.81.1543	. . . LID, ASSEMBLY Spares for:—	1	—	ED9/35
EEAS117/1 SCREW, cover	2	S92	ED9/36
EEAS28/2CU WASHER	4	DTD126A	ED9/37
EEAS42 WASHER Attaching parts for EA3.81.1537:—	2	Leather	ED9/38
A25/1C	. . Bolt, 2BA	4	—	ED9/39
508-1-11778-003 or SP91B	. . CLAMP, fixing cables at junction box G48	2	—	ED9/40
AS3180/4B	. . CLIP . . CLIP, fixing cables Attaching parts for AS3180/4B:—	2 4	— —	ED9/41 ED9/42
A25/1B	. . Bolt, 4BA	QR	—	ED9/43
AGS2001B1	. . Nut, 4BA	QR	—	ED9/44

ELECTRICAL
ELECTRICAL EQUIPMENT IN WINGS

Part Number	Description	No. Off	Matl. Spec.	Plate No.
R -	EARTH POINTS (EA3.81.8087) (SAS 4753) Consisting of:-	-	-	
R -	. EARTH POINT E7, E8, E9, E10 and E12 Consisting of:-	-	-	
R AGS2001C4	. . NUT, stiff, 2BA	1	-	
R A54C	. . NUT, 2BA	1	-	
R A43C40	. . SCREW, 2BA	1	-	
R SP25C	. . WASHER, 2BA	1	-	
R SP124D	. . WASHER, 2BA	1	-	
R -	. EARTH POINT E11 Consisting of:-	-	-	
R AGS2001C4	. . NUT, stiff, 2BA	1	-	
R A54C	. . NUT, 2BA	1	-	
R EA3.81.6239	. . STUD, earth	1	-	
R SP25C	. . WASHER, 2BA	1	-	
R SP124D	. . WASHER, 2BA	1	-	

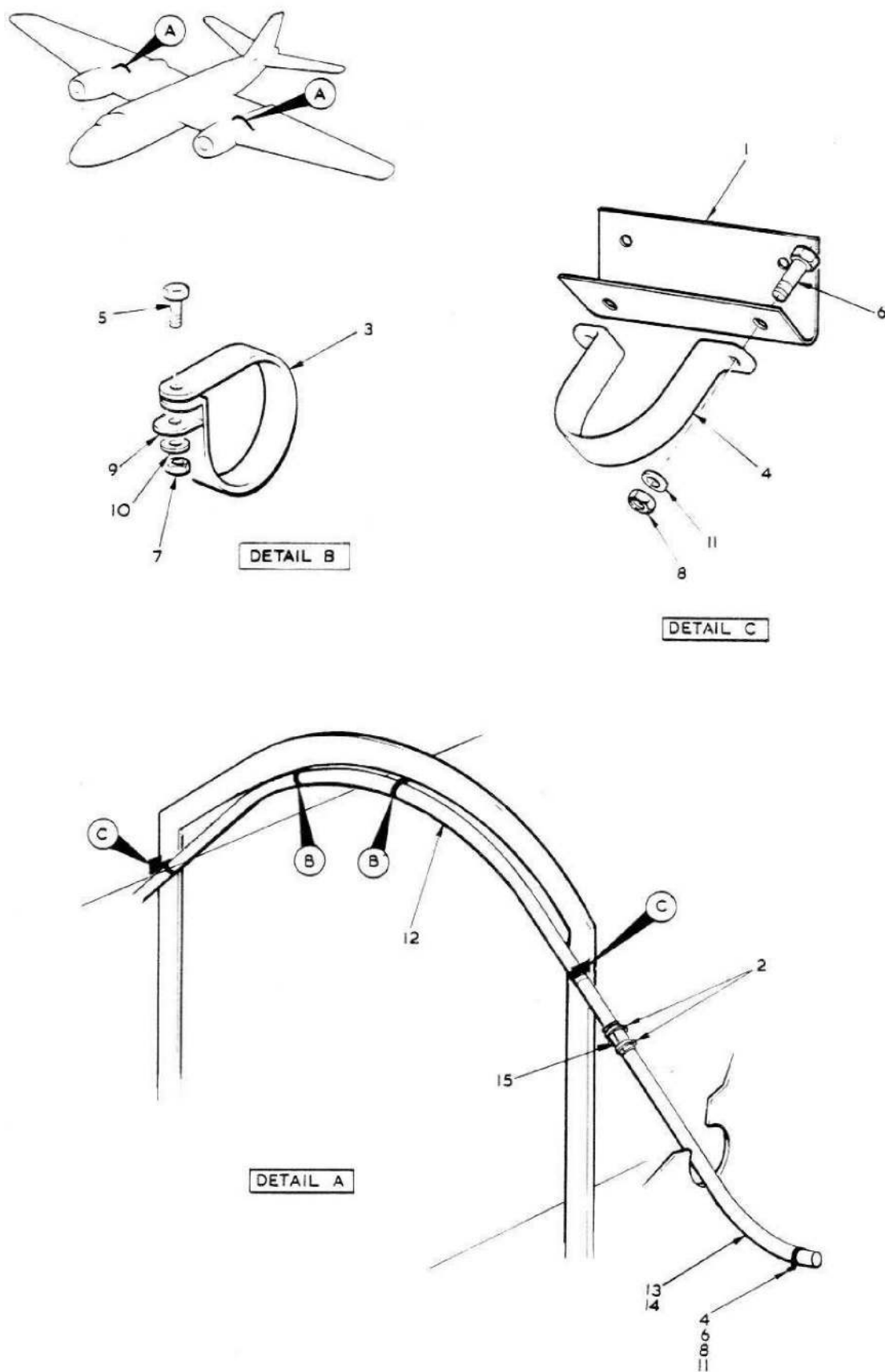


FIG. 1 ELECTRICAL EQUIPMENT IN WINGS

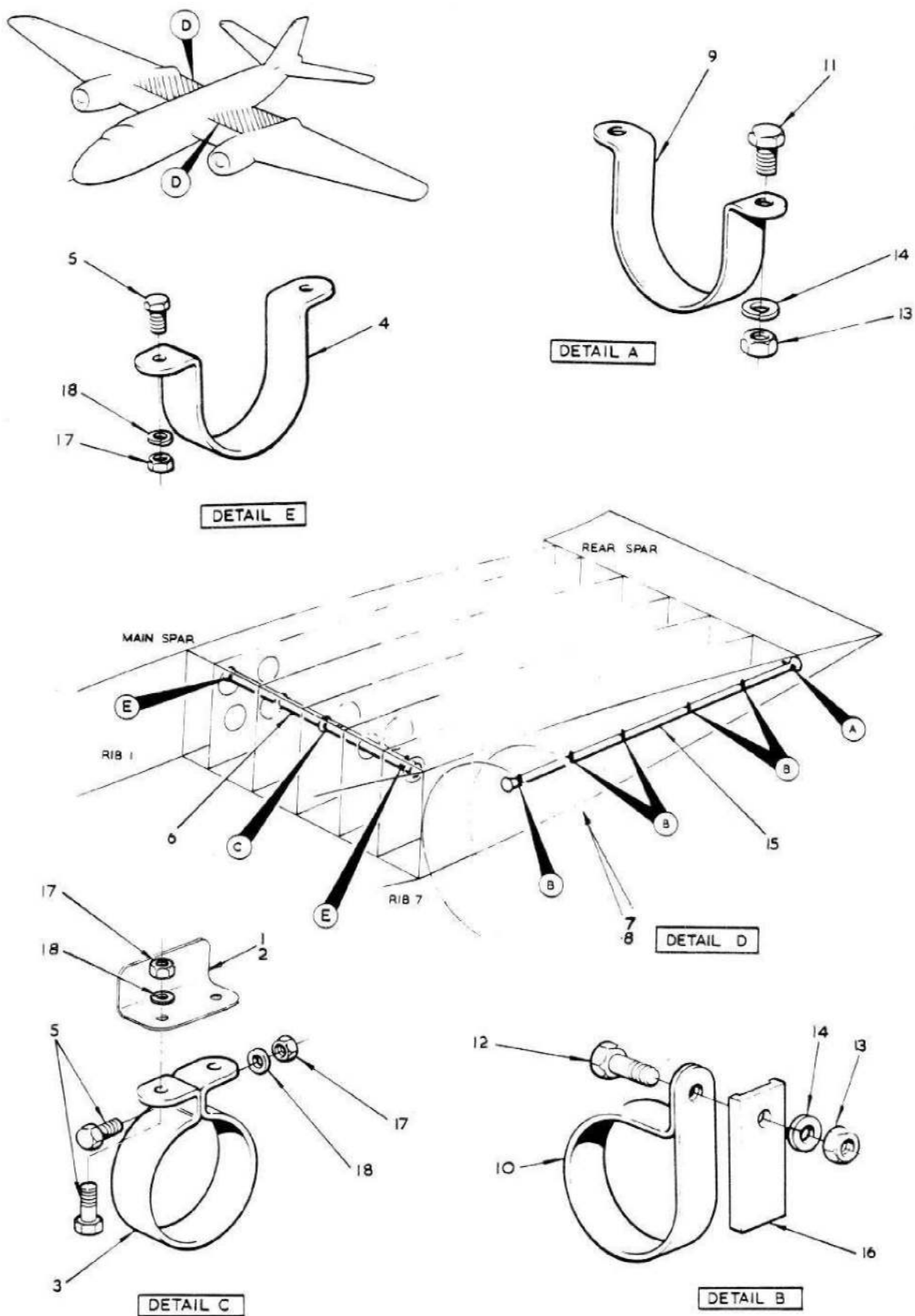


FIG. 2 ELECTRICAL EQUIPMENT IN WINGS

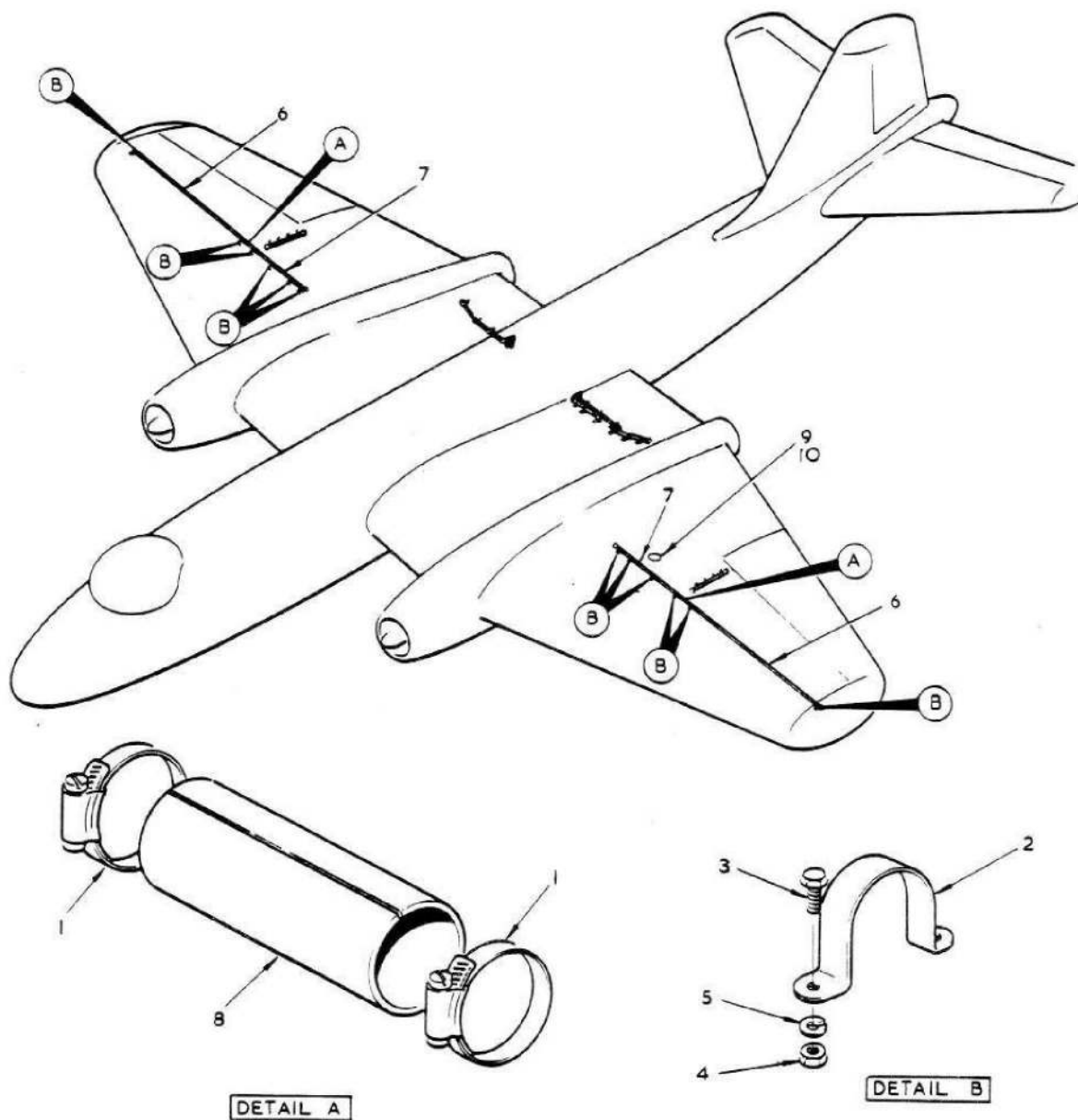


FIG. 3 ELECTRICAL EQUIPMENT IN WINGS

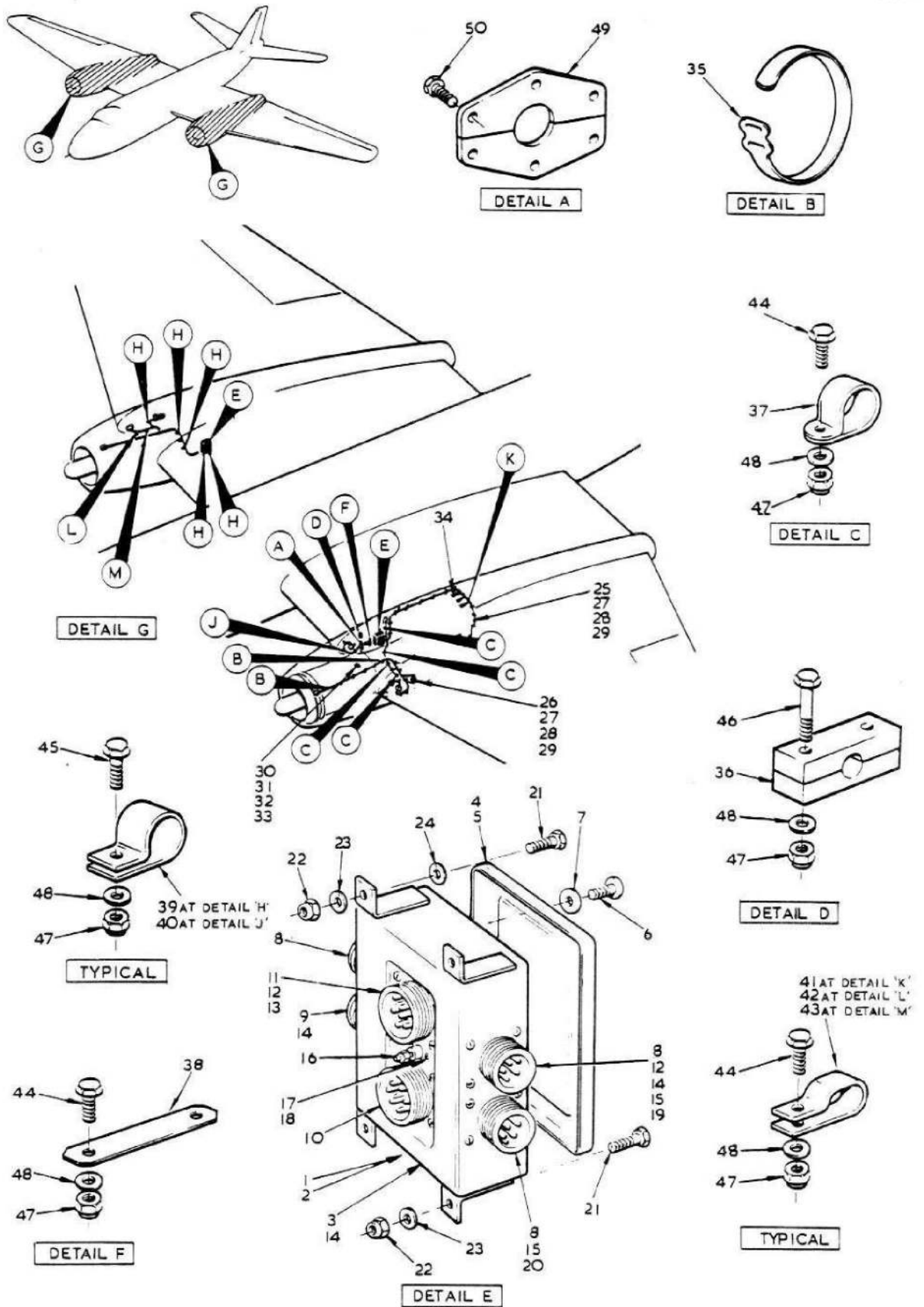


FIG. 4 ELECTRICAL EQUIPMENT IN WINGS

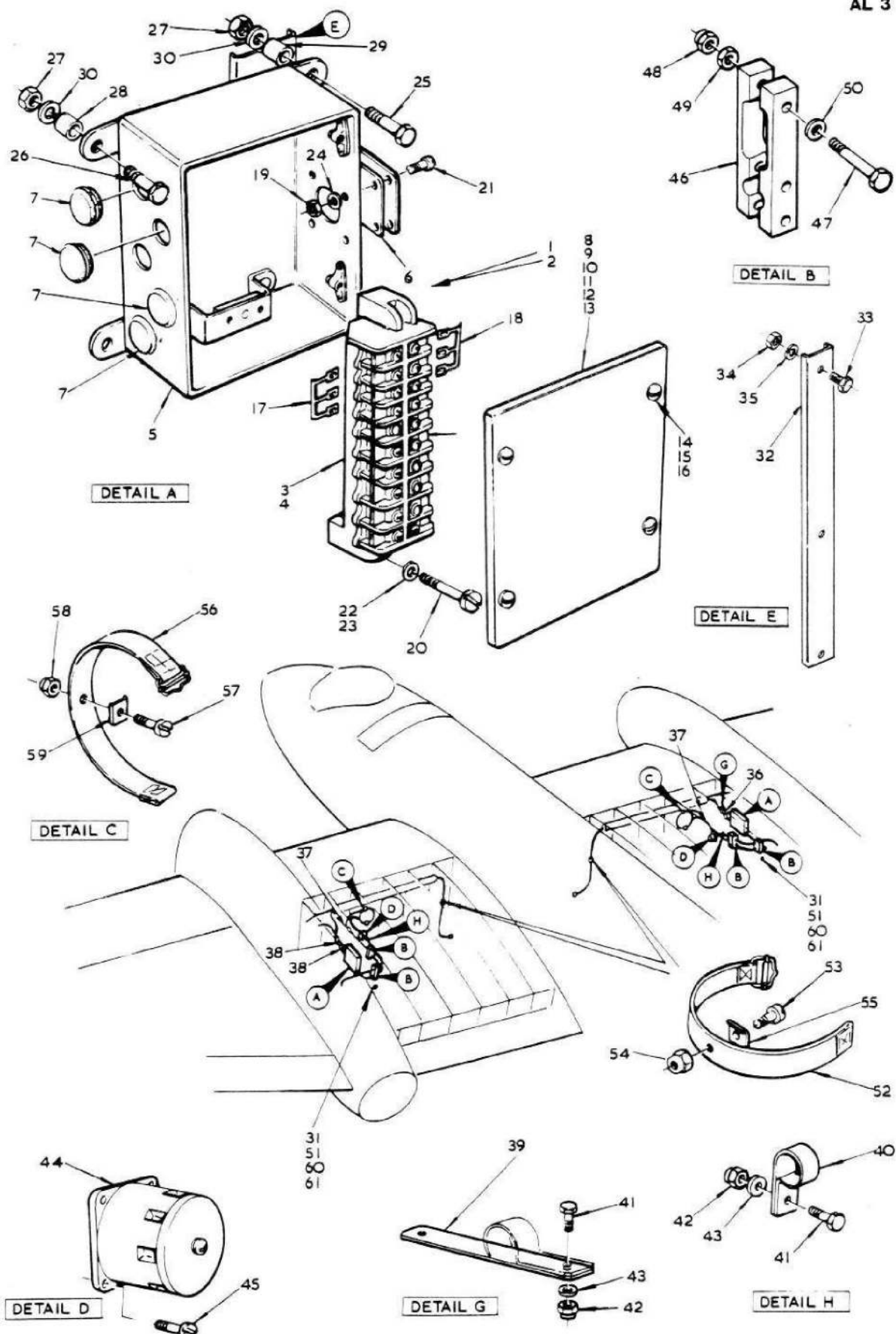


FIG. 5 ELECTRICAL EQUIPMENT IN WINGS

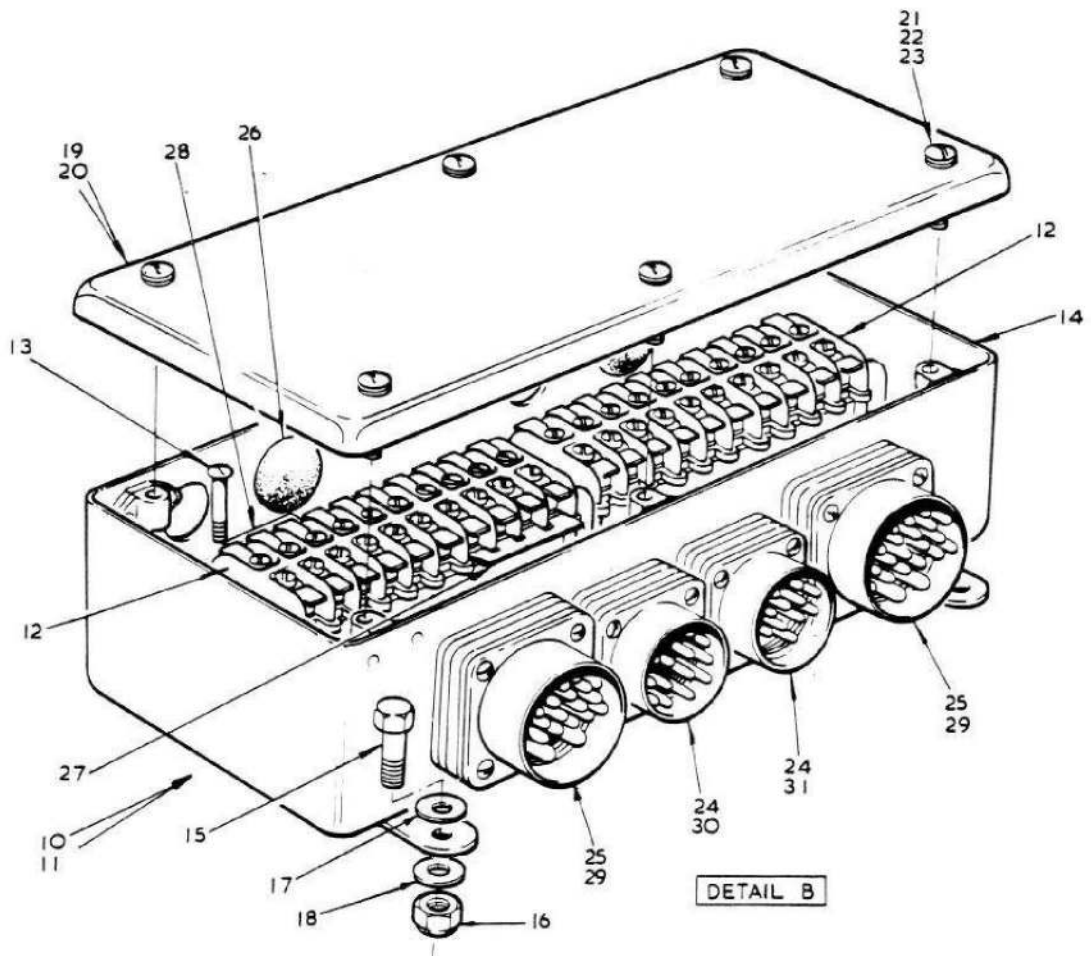
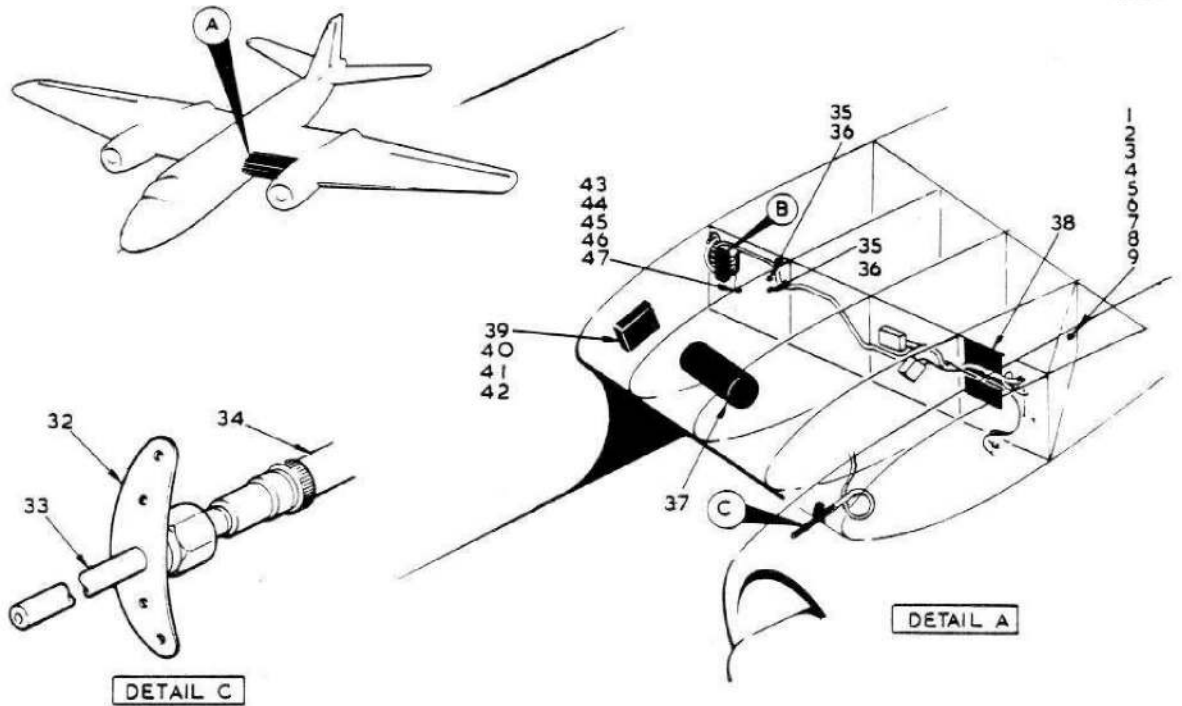


FIG. 6 ELECTRICAL EQUIPMENT IN WINGS

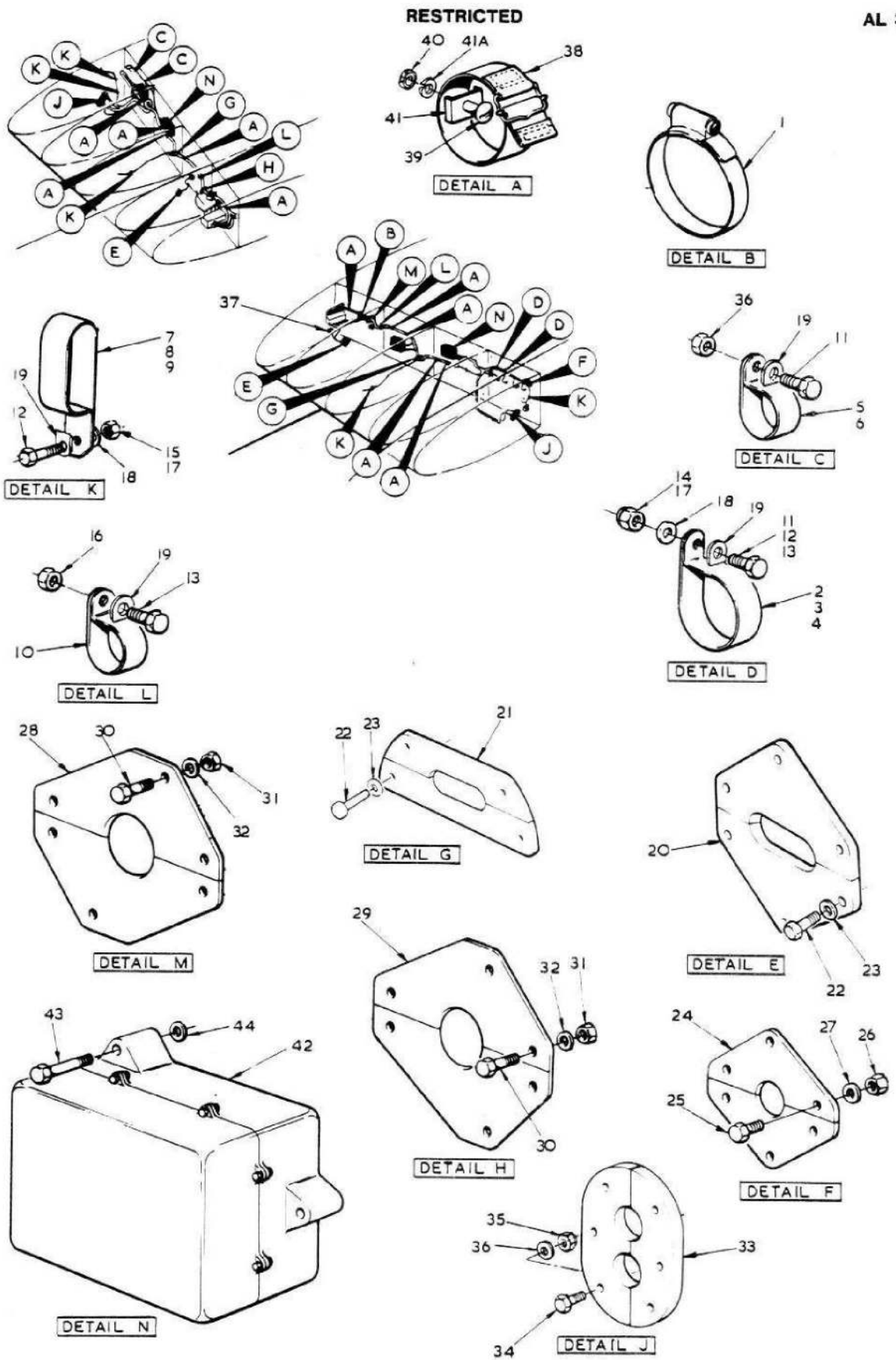


FIG. 7 ELECTRICAL EQUIPMENT IN WINGS

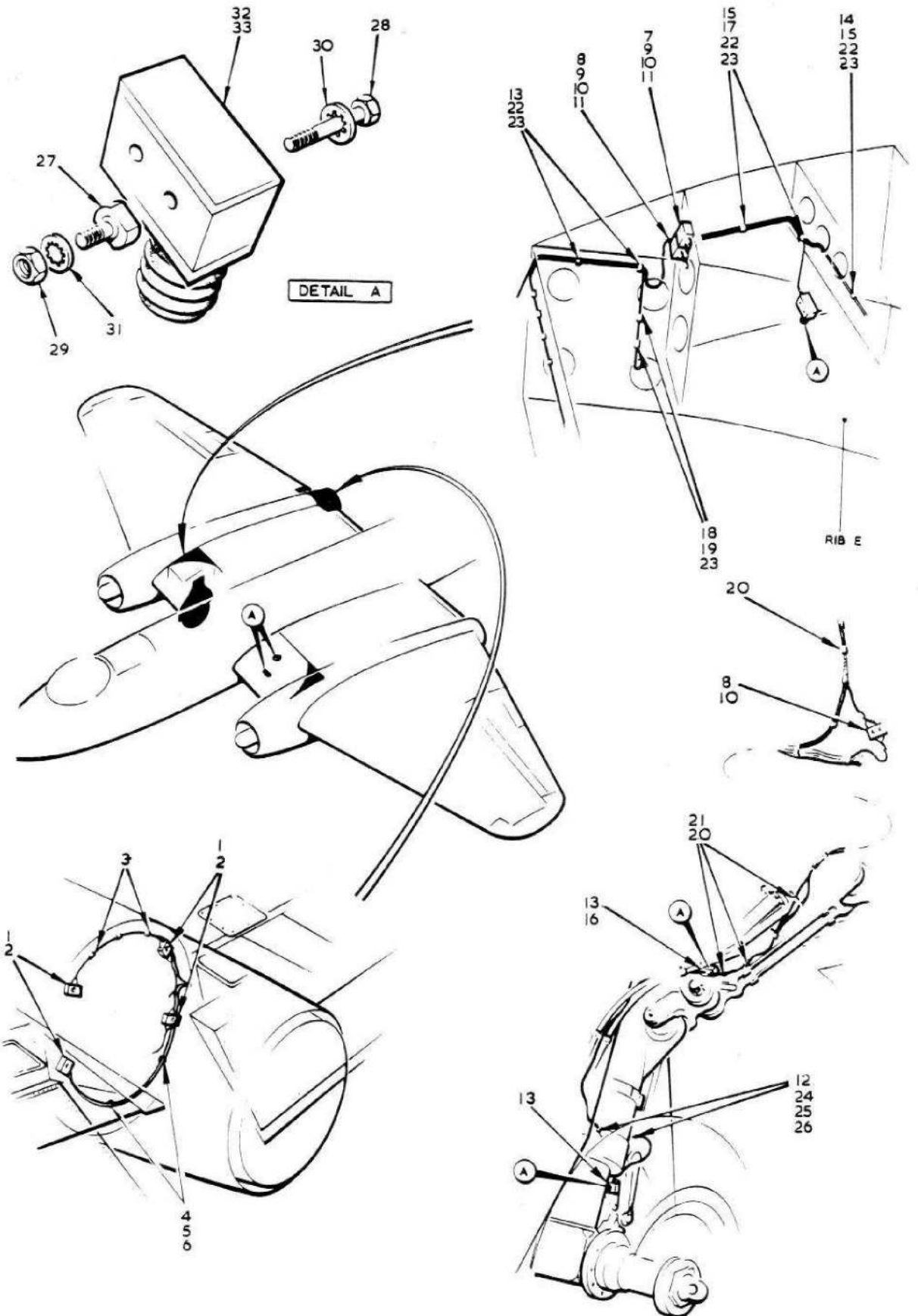


FIG. 8 ELECTRICAL EQUIPMENT IN WINGS

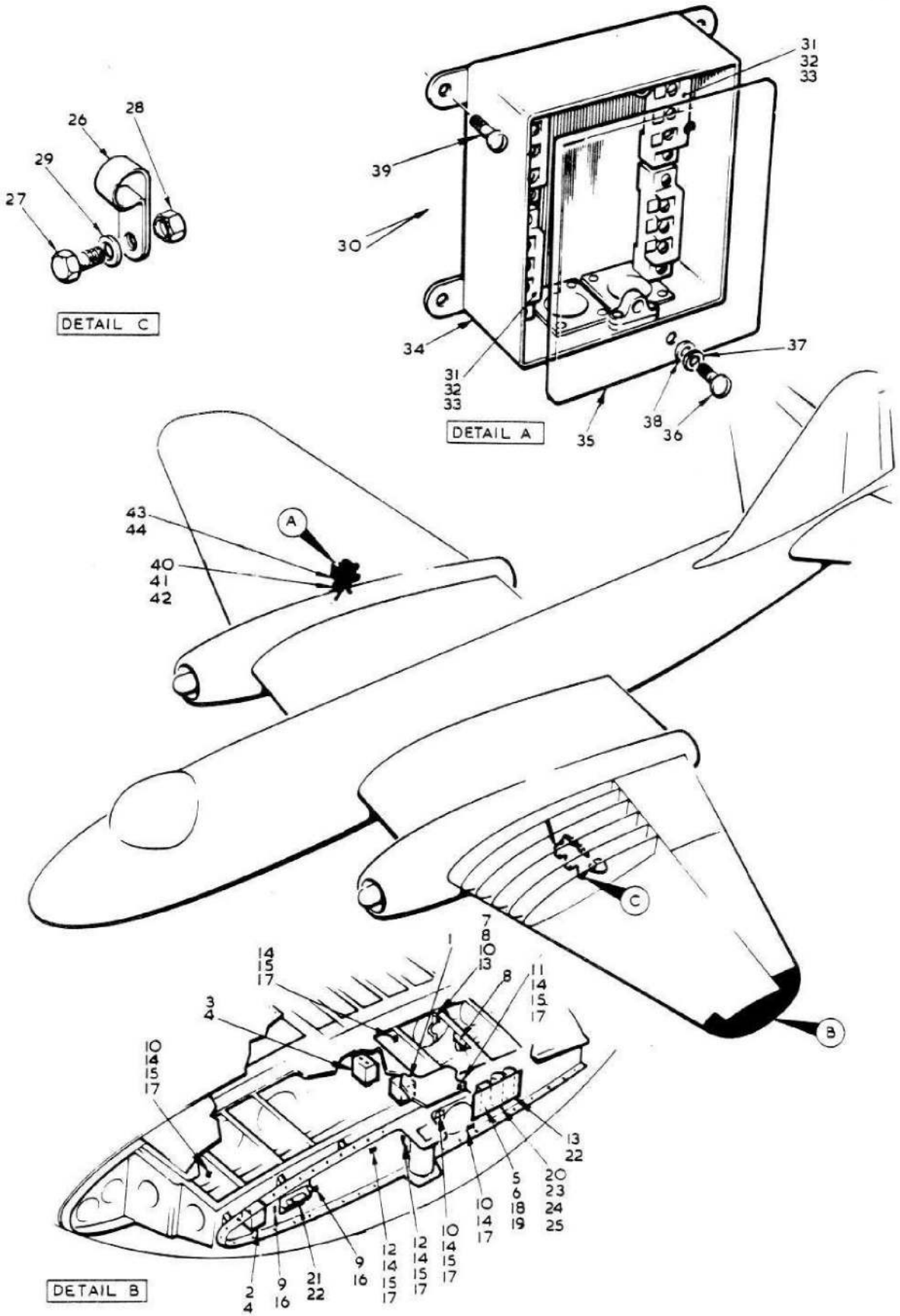


FIG. 9 ELECTRICAL EQUIPMENT IN WINGS

This file was downloaded
from the RTFM Library.

Link: www.scottbouch.com/rtfm

Please see site for usage terms,
and more aircraft documents.

