

Duty : Bomber

Type : Twin Engine Monoplane

DIMENSIONS	AREAS	FUEL TANK CAPACITY
<p>Wing Span : 64 ft. 0 in. Overall Height : 15ft. 7 in. Overall Length : 65 ft. 6 in. Chord at Root : 19ft. 0 in. Chord at Tip : 6 ft. 8 in. Mainplane Dihedral :- Inner Wing: 2 deg. Outer Wing: 4 deg. 21 min. Incidence Mainplane : 2 degrees Incidence Tailplane variable from - 3 deg. 22 mins. to + 2 deg. 22 mins. Tailplane Dihedral : 10 deg</p>	<p>Mainplane and Ailerons : 960 sq. ft. Ailerons : each 36 sq. ft. Tailplane and Elevators : 191 sq. ft. Elevators : each 28.5 sq. ft. Elevator Trim Tabs : 2.75 sq. ft. Fin : 31 sq. ft. Rudder (including horn) : 31 sq. ft. Rudder Trim Tab : 2.64 sq. ft. Aileron Trim Tabs : each 1.82 sq. ft. Inboard Flaps : each 13.13 sq. ft. Outboard Flaps : each 21.32 sq. ft.</p>	<p>No. 1 Tank : 520 galls. No. 2 Tank : 317 galls. No. 3 Tank : 550 galls. Wing Tip Jettisonable Tanks (Port and Starboard) each : 250 galls. Total Fuel : 1887 galls.</p>

PLATE B
ISSUE 2

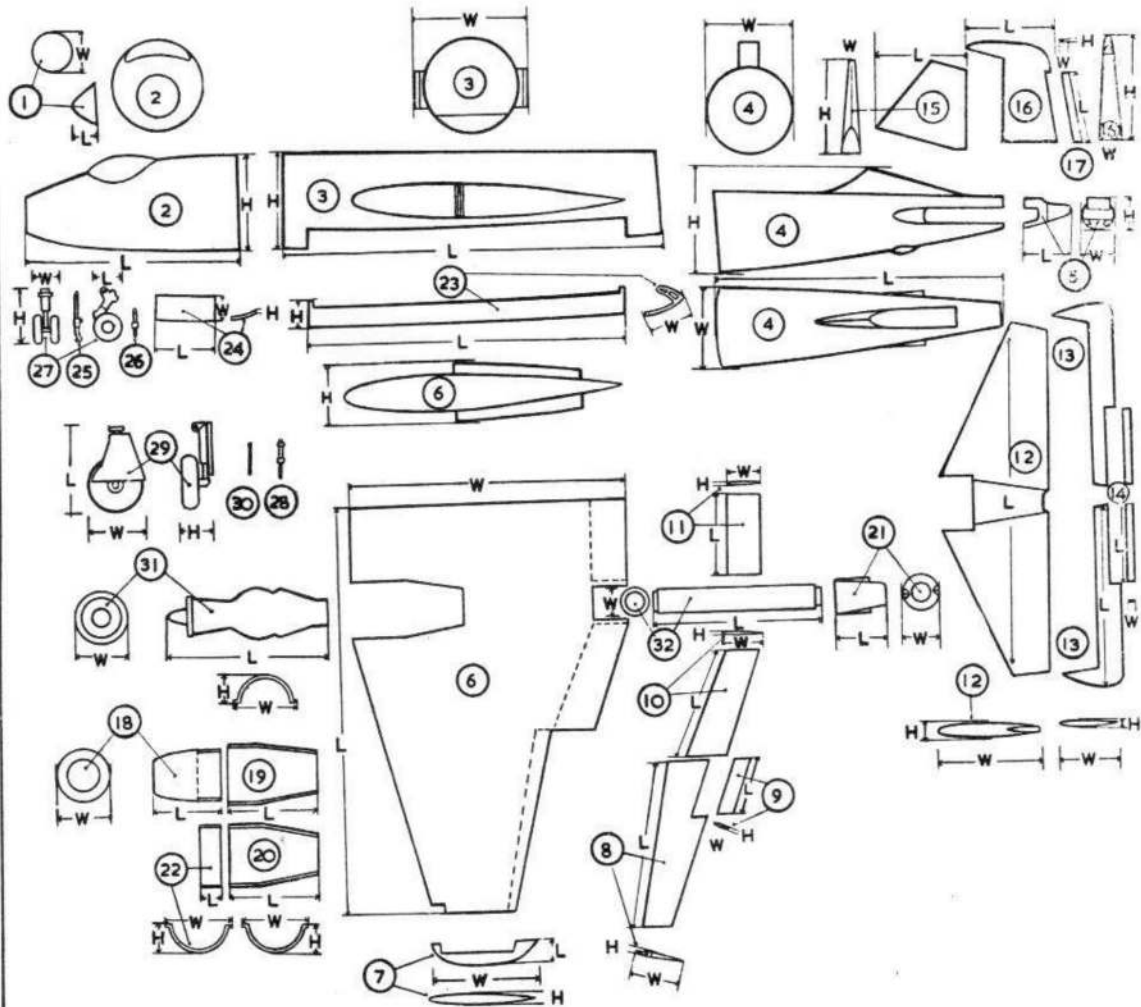
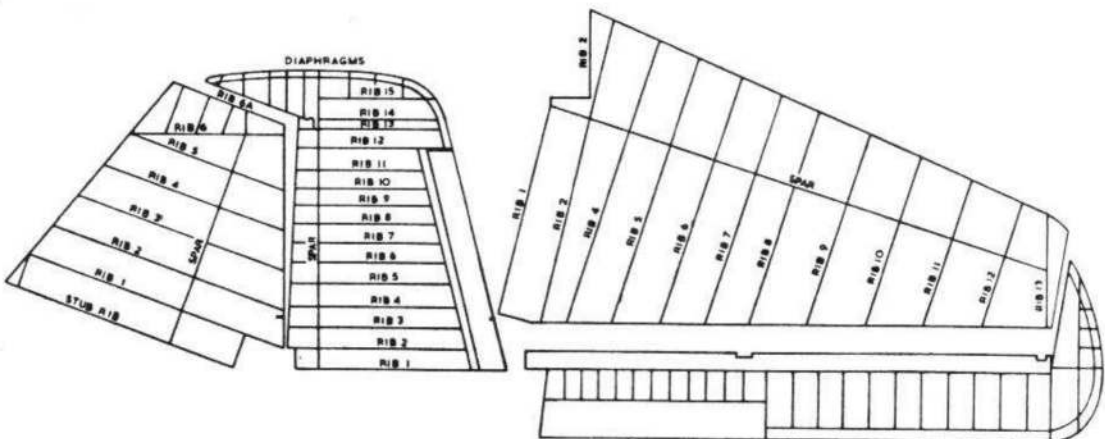
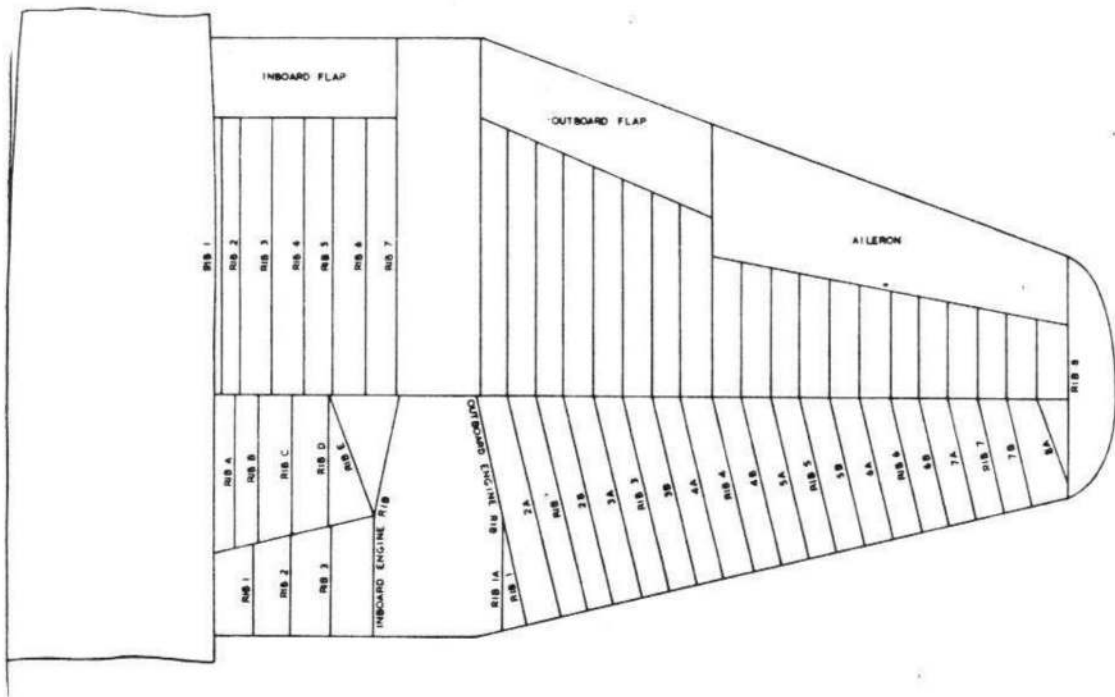
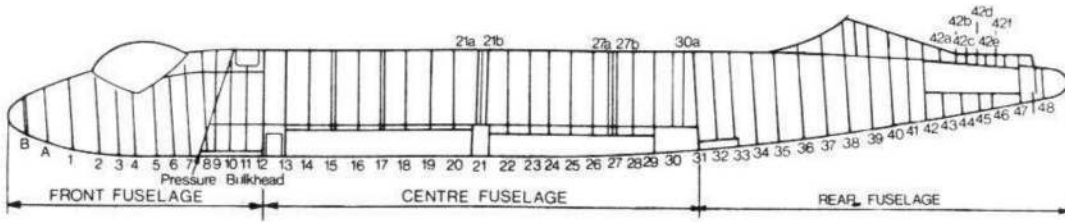


FIG	COMPONENT	LENGTH	WIDTH	HEIGHT	FIG	COMPONENT	LENGTH	WIDTH	HEIGHT
1	Perspex Nose	1' 5"	2' 7" DIA		18	Front Cowl	13' 2"	3' 10"	3' 10"
2	Front Fuselage	15' 0"	6' 6" DIA		19	Top Rear Cowl	5' 5"	2' 0"	1' 3"
3	Centre Fuselage	25' 11"	7' 7"	6' 6"	20	Bottom Rear Cowl	5' 5"	2' 0"	1' 3"
4	Rear Fuselage	19' 9"	5' 10"	7' 11"	21	Jet Pipe Cowl	3' 8"	2' 8"	2' 7"
5	Rear Cone	4' 9"	2' 5"	2' 10"	22	Service Panel	2' 2"	2' 0"	1' 9"
6	Wings	27' 2"	19' 0"	4' 3"	23	Bomb Doors	22' 1"	3' 0"	1' 8"
7	Wing Tips	1' 8"	7' 8"	10"	24	Nose U/C Doors	4' 2"	1' 5"	3"
8	Aileron	12' 6"	1' 3"	9"	25	Nose U/C Radius Rod	3' 11"	4"	8"
9	Tab	4' 2"	8"	2"	26	Nose U/C Jack	2' 2"	5"	6"
10	Outboard Flap	8' 11"	2' 9"	3"	27	Nose U/C Wheel and Leg	2' 2"	1' 7"	3' 7"
11	Inboard Flap	5' 7"	2' 6"	3"	28	Main U/C Jack	1' 11"	4"	7"
12	Tailplane	26' 0"	7' 9"	1' 6"	29	Main U/C Wheel and Leg	6' 3"	3' 11"	2' 1"
13	Elevator	13' 11"	4' 5"	5"	30	Side Stay	2' 9"	8"	8"
14	Tab	5' 7"	8"	2"	31	Engines	11' 0"	3' 6" DIA	
15	Fin	6' 4"	1' 6"	6' 9"	32	Jet Pipe	12' 3"	2' 2" DIA	
16	Rudder	7' 1"	1' 3"	7' 0"					
17	Tab	5' 5"	9"	2"					

PACKING DIMENSIONS



KEY DIAGRAM OF RIB AND FRAME POSITIONS

This file was downloaded
from the RTFM Library.

Link: www.scottbouch.com/rtfm

Please see site for usage terms,
and more aircraft documents.

