

AP101B-0402-3A

POWER INSTALLATION

ENGINE MOUNTINGS AND ATTACHMENTS, PORT

Part Number	Description	No. Off	Matl. Spec.	Plate No.
EA1.51.1	ENGINE MOUNTINGS AND ATTACHMENTS, PORT, ASSEMBLY Spares for:—	—	—	
R EA1.51.17	. . BEARING, spherical	2	S11	PC1/1
R EA1.51.211	. . BRACKET, ENGINE MOUNTING, REAR, OUTBOARD, ASSEMBLY (MOD 5045) Consisting of:—	1	—	PC1/2
R EK5.51.611	. . BRACKET, mounting (Mod 5045)	1	—	PC1/3
R EA1.51.215	. . CAP, retaining (Mod 5045) Attaching parts for EA1.51.215:—	1	—	PC1/4
R A27JS	. . Nut, slotted, 3/8" BSF	1	—	PC1/5A
R A27LS	. . Nut, slotted, 7/16" BSF	1	—	PC1/5
R SP90C8	. . Pin, split	1	—	PC1/16
R SP90C9	. . Pin, split	1	—	PC1/17
R SP122J	. . Washer	1	—	PC1/6A
R SP122L	. . Washer	1	—	PC1/6
EA1.51.207	. . SCREW, grub	1	S11	PC1/8
EA1.51.15	. . STUD, special (Mod 5045)	1	—	PC1/7
R EA1.51.213	. . STUD, special (Mod 5045) Attaching parts for EA1.51.211:—	1	—	PC1/18
A25/8G	. . Bolt, 5/16" BSF	6	—	PC1/9
A27GP	. . Nut, 5/16" BSF	6	—	PC1/10
EA1.51.209	. . Shim (if necessary)	2	—	PC1/11
SP15G	. . Washer	6	—	PC1/12
R EA1.51.212	. . BRACKET, ENGINE MOUNTING, REAR, INBOARD, ASSEMBLY (MOD 5045) Consisting of:—	1	—	PC1/13
R EK5.51.612	. . BRACKET, mounting (Mod 5045)	1	—	PC1/14

POWER INSTALLATION

ENGINE MOUNTINGS AND ATTACHMENTS, PORT

Part Number	Description	No. Off	Matl. Spec.	Plate No.
R EA1.51.215	CAP, retaining (Mod. 5045) Attaching parts for EA1.51.215:-	1	-	PC1/15
R A27JS	Nut, slotted, 3/8" BSF	1	-	PC1/5A
R A27LS	Nut, slotted, 7/16" BSF	1	-	PC1/5
R SP90C8	Pin, split	1	-	PC1/16
R SP90C9	Pin, split	1	-	PC1/17
R SP122J	Washer	1	-	PC1/6A
R SP122L	Washer	1	-	PC1/6
EA1.51.207	SCREW, grub	1	S11	PC1/19
EA1.51.15	STUD, special (Mod. 5045)	1	-	PC1/7
EA1.51.213	STUD, special (Mod. 5045) Attaching parts for EA1.51.212:-	1	-	PC1/18
R A25/8G	Bolt, 5/16" BSF	6	-	PC1/20
A27/GP	Nut, 5/16" BSF	6	-	PC1/21
EA1.51.209	Shim (if necessary)	2	-	PC1/11
SP15G	Washer	6	-	PC1/23
EA1.51.229	MOUNTING, ENGINE, FORWARD, INBOARD, ASSEMBLY (MOD. 5048) Spares for:-	1	-	PC1/24
EA1.51.33	BOLT, shouldered	1	S11	PC1/25
EA1.51.225	BRACKET, engine mounting (Mod. 5048) (Pre Mod. 5240)	1	-	PC1/26
R EA1.51.233	BRACKET, engine mounting (Mod. 5240) (Port) (AS4766)	1	-	PC1/26
EA1.51.45	FORK-END	1	S96	PC1/27
EA1.51.27	NUT, locking	1	L40	PC1/28
A27JS	NUT, slotted, 3/8" BSF	1	-	PC1/28A
A27PT	NUT, 9/16"	1	-	PC1/60
SP90C7	PIN, split, 1/16" BSF	1	-	PC1/28B
EA1.51.25	PLUG, retaining	1	L40	PC1/29
EA1.51.43	ROD, tie adjustable	1	S65	PC1/30
SP16J	WASHER	1	-	PC1/30A
EA1.51.37	Attaching parts for EA1.51.229:- Bolt, eye, lower	1	S11	PC1/31
EA1.51.39	Bolt, eye, upper	1	S11	PC1/32
EEAS222/11G	Bolt, 5/16" BSF (Mod. 5048)	2	-	PC1/33
A27GP	Nut, 5/16" BSF	2	-	PC1/34
A27GS	Nut, 5/16" BSF, slotted (Mod. 5048)	2	-	PC1/35
SP90C7	Pin, split (Mod. 5048)	2	-	PC1/35A
SP125G	Washer, thick (Mod. 5048)	4	-	PC1/36

POWER INSTALLATION

ENGINE MOUNTINGS AND ATTACHMENTS, PORT

Part Number	1 2 3 4 5 6	Description	No. Off	Matl. Spec.	Plate No.
EA1.51.231		MOUNTING, ENGINE, FORWARD OUTBOARD, ASSEMBLY (MOD. 5048) Spares for:—	1	—	PC1/37
EA1.51.33		· BOLT, shouldered	1	S11	PC1/38
EA1.51.227		· BRACKET, mounting (Mod. 5048)	1	—	PC1/39
EA1.51.45		· FORK-END	1	S96	PC1/40
EA1.51.27		· NUT, locking	1	L40	PC1/41
A27PT		· NUT, locking, 9/16" BSF	1	—	PC1/41A
A27JS		· NUT, slotted, 3/8" BSF	1	—	PC1/41B
SP90C7		· PIN, split, 1/16" dia	1	—	PC1/41C
EA1.51.25		· PLUG, retaining	1	L40	PC1/42
EA1.51.43		· ROD, tie, adjustable	1	S65	PC1/43
SP16J		· WASHER	1	—	PC1/43A
		Attaching parts for EA1.51.231:—			
EEAS222/11G		· Bolt, 5/16" BSF (Mod. 5048)	3	—	PC1/44
EEAS222/12G		· Bolt, 5/16" BSF (Mod. 5048) (Make from A25/12G)	1	—	PC1/44A
A58GS		· Nut, slotted, 5/16" BSF (Mod. 5048)	1	—	PC1/62
SP90C7		· Pin, split (Mod. 5048)	1	—	PC1/61
SP125G		· Washer (Mod. 5048)	4	—	PC1/46
EA1.51.19		· PIN	1	S11	PC1/47

R
R

POWER INSTALLATION

ENGINE MOUNTINGS AND ATTACHMENTS, STARBOARD

Part Number	Description	No. Off	Matl. Spec.	Plate No.
EA1.51.2	ENGINE MOUNTINGS AND ATTACHMENTS, STARBOARD, ASSEMBLY Spares for:—	—	—	
R EA1.51.17	. BEARING, spherical	2	S11	PD1/1
R EA1.51.211	. BRACKET, ENGINE MOUNTING, REAR INBOARD, ASSEMBLY (MOD 5045) Consisting of:—	1	—	PD1/2
R EK5.51.611	. BRACKET, mounting (Mod 5045)	1	—	PD1/3
R EA1.51.215	. CAP, retaining, spherical bearing (Mod 5045) Attaching parts for EA1.51.215:—	1	DTD5044	PD1/4
R A27JS	. Nut, 3/8" BSF	1	—	PD1/5A
R A27LS	. Nut, 7/16" BSF	1	—	PD1/5
R SP90C8	. Pin, split	1	—	PD1/16
R SP90C9	. Pin, split	1	—	PD1/17
R SP122J	. Washer	1	—	PD1/6A
R SP122L	. Washer	1	—	PD1/6
EA1.51.207	. SCREW, grub	1	S11	PD1/8
EA1.51.15	. STUD, special (Mod 5045)	1	—	PD1/7
R EA1.51.213	. STUD, special (Mod 5045) Attaching parts for EA1.51.211:—	1	—	PD1/18
A25/8G	. Bolt, 5/16" BSF	6	—	PD1/9
A27GP	. Nut, 5/16" BSF	6	—	PD1/10
EA1.51.209	. Shim (if necessary)	2	—	PD1/11
SP15G	. Washer	6	—	PD1/12
R EA1.51.212	. BRACKET, ENGINE MOUNTING, REAR OUTBOARD, ASSEMBLY (MOD 5045) Consisting of:—	1	—	PD1/13
R EK5.51.612	. BRACKET, mounting (Mod 5045)	1	DTD683	PD1/14

POWER INSTALLATION
ENGINE MOUNTINGS AND ATTACHMENTS, STARBOARD

Part Number	Description	No. Off	Mati. Spec.	Plate No.	
					1
R EA1.51.215	. . CAP, retaining, spherical bearing (Mod. 5045) Attaching parts for EA1.51.215:—	1	DTD5044	PD1/15	
R A27JS	. . Nut, 3/8" BSF	1	—	PD1/5A	
R A27LS	. . Nut, 7/16" BSF	1	—	PD1/5	
R SP90C8	. . Pin, split	1	—	PD1/16	
R SP90C9	. . Pin, split	1	—	PD1/17	
R SP122J	. . Washer	1	—	PD1/6A	
R SP122L	. . Washer	1	—	PD1/6	
EA1.51.207	. . SCREW, grub	1	S11	PD1/19	
EA1.51.15	. . STUD, special (Mod. 5045)	1	—	PD1/7	
R EA1.51.213	. . STUD, special (Mod. 5045) Attaching parts for EA1.51.212:—	1	—	PD1/18	
A25/8G	. Bolt, 5/16" BSF	6	—	PD1/20	
A27GP	. Nut, 5/16" BSF	6	—	PD1/21	
EA1.51.209	. Shim (if necessary)	2	—	PD1/11	
SP15G	. Washer	6	—	PD1/23	
EA6.50.27	. BRACKET, toggle attachment on starboard engine, forward, outboard, mounting, assembly Attaching parts for EA6.50.27:—	1	S96	PD1/52	
A25/3E	. Bolt, 1/4" BSF	1	—	PD1/53	
A25/5G	. Bolt, 5/16" BSF	1	—	PD1/54	
SP15E	. Washer	1	—	PD1/55	
SP15G	. Washer	1	—	PD1/56	
SP47E	. Washer, spring	1	—	PD1/57	
SP47G	. Washer	1	—	PD1/58	
EA1.51.230	. MOUNTING, ENGINE, FORWARD, INBOARD ASSEMBLY (MOD. 5048) Spares for:—	1	—	PD1/48	
EA1.51.33	. . BOLT, shouldered	1	S11	PD1/25	
EA1.51.226	. . BRACKET, mounting (Mod. 5048) (Pre Mod. 5240)	1	—	PD1/49	
R EA1.51.234	. . BRACKET, engine mounting (Mod. 5240) (Starboard) (AS4766)	1	—	PD1/49	
EA1.51.45	. . FORK-END	1	S96	PD1/27	
EA1.51.27	. . NUT, locking	1	L40	PD1/28	
A27JS	. . NUT, slotted, 3/8" BSF	1	—	PD1/28A	
A27PT	. . NUT, 9/16"	1	—	PD1/60	
SP90C7	. . PIN, split, 1/16" dia	1	—	PD1/28B	
EA1.51.25	. . PLUG, retaining	1	L40	PD1/29	

POWER INSTALLATION

ENGINE MOUNTINGS AND ATTACHMENTS, STARBOARD

Part Number	Description	No. Off	Matl. Spec.	Plate No.	
					1
EA1.51.43	. . ROD, tie, adjustable	1	S95	PD1/30	
AS471J	. . WASHER	1	—	PD1/30A	
	Attaching parts for EA1.51.230:—				
EA1.51.37	. Bolt, eye lower	1	S11	PD1/31	
EA1.51.39	. Bolt, eye upper	1	S11	PD1/32	
EEAS222/11G	. Bolt, 5/16" BSF (Mod. 5048)	2	—	PD1/33	
A27GP	. Nut, 5/16" BSF	2	—	PD1/34	
A27GS	. Nut, 5/16" BSF slotted (Mod. 5048)	2	—	PD1/35	
SP90C7	. Pin, split	2	—	PD1/35A	
SP125G	. Washer, thick	4	—	PD1/36	
EA1.51.232	. MOUNTING, ENGINE, FORWARD OUTBOARD, ASSEMBLY (MOD. 5048) Spares for:—	1	—	PD1/50	
EA1.51.33	. . BOLT, shouldered	1	S11	PD1/38	
EA1.51.228	. . BRACKET, engine mounting (Mod. 5048)	1	—	PD1/51	
EA1.51.45	. . FORK-END	1	S96	PD1/40	
EA1.51.27	. . NUT, locking	1	L40	PD1/41	
A27PT	. . NUT, locking, 9/16" BSF	1	—	PD1/41A	
A27JS	. . NUT, slotted, 3/8" BSF	1	—	PD1/41B	
SP90C7	. . PIN, split, 1/16" dia	1	—	PD1/41C	
EA1.51.25	. . PLUG, retaining	1	L40	PD1/42	
EA1.51.43	. . ROD, tie, adjustable	1	S65	PD1/43	
SP16J	. . WASHER	1	—	PD1/43A	
	Attaching parts for EA1.51.232:—				
EEAS222/11G	. Bolt, 5/16" BSF (Mod. 5048)	3	—	PD1/44	
EEAS222/12G	. Bolt, 5/16" BSF (Mod. 5048)	1	—	PD1/44A	
A58GS	. Nut, slotted, 5/16" BSF (Mod. 5048)	1	—	PD1/45	
SP90C7	. Pin, split (Mod. 5048)	1	—	PD1/45A	
SP125G	. Washer (Mod. 5048)	4	—	PD1/46	
EA1.51.19	. PIN	1	S11	PD1/47	

R

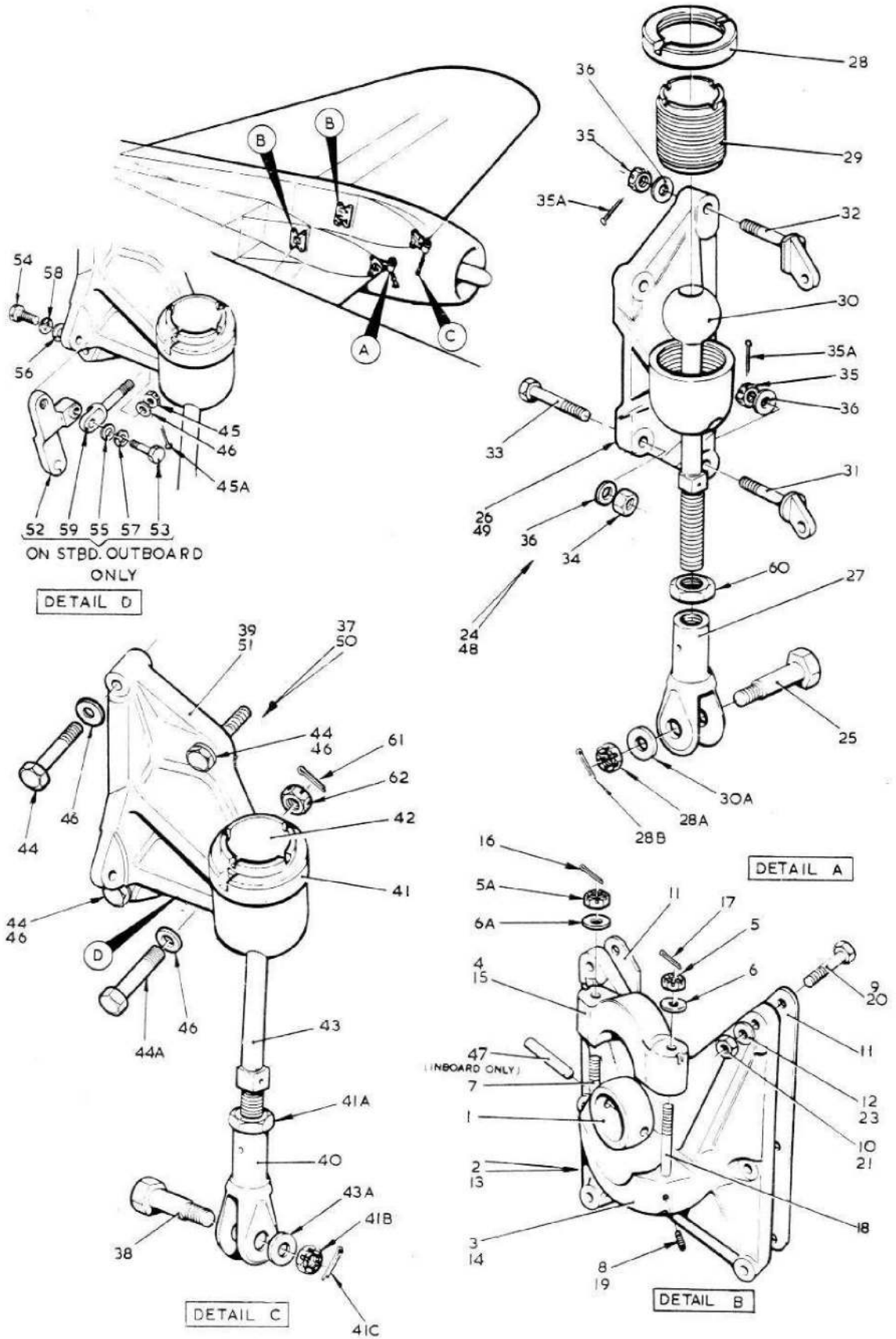


FIG1 ENGINE MOUNTINGS & ATTACHMENTS PORT & STBD

CODE RSTZ

SECT PC/PD

This file was downloaded
from the RTFM Library.

Link: www.scottbouch.com/rtfm

Please see site for usage terms,
and more aircraft documents.

