

TANKS
VENTRAL TANK

Part Number	Description	No. Off	Mati. Spec.	Plate No.	
					1
EA3.56.453	TANK, VENTRAL, FUEL, CENTRE FUSELAGE, AFT POSITION INSTALLATION (MOD. 432-S.O.O.) Spares for:—	—	—		
EA3.56.221	TANK, FUEL, 300 GALLON, INSTALLATION Spares for:—	—	—	UB1/1	
EA3.56.261	BRACKET AND STRAP, ASSEMBLY Spares for:—	4	—	UB1/2	
EA3.56.361	BRACKET, sub-assembly	1	—	UB1/3	
EA3.56.363	STRAP, tank Attaching parts for EA3.56.361 & EA3.56.363:—	1	—	UB1/4	
A25/47N	Bolt, 1/2" BSF (Make from A25/48N)	1	—	UB1/5	
EA3.56.465	Bush	2	—	UB1/6	
EA3.56.467	Link-plate	2	—	UB1/7	
A27NS	Nut, slotted, 1/2" BSF	1	—	UB1/8	
EA3.56.463	Tube, distance	1	—	UB1/9	
SP13N	Washer	2	—	UB1/10	
	Attaching parts for EA3.56.261:—				
A25/381/2J	Bolt, 3/8" BSF (Make from A25/39J)	1	—	UB1/11	
A25/381/2L	Bolt, 7/16" BSF (Make from A25/39L)	1	—	UB1/12	
A27JS	Nut, slotted, 3/8" BSF	1	—	UB1/13	
A27LS	Nut, slotted, 7/16" BSF	1	—	UB1/14	
SP90C7	Pin, split	1	—	UB1/15A	
SP90E8	Pin, split	2	—	UB1/16A	
SP13J	Washer	2	—	UB1/15	
SP13L	Washer	2	—	UB1/16	
AGS1661/E or AS4525/16 AGS605/1	CLIP, bonding	4	—	UB2/26	
EEAS164/16/25	CLIP, hose	4	—	UB2/1A	
—	HOSE, rubber, 1" i/d x 2.5" long, vent pipe	2	DTD625	UB2/1	
EA3.56.245	MESH, brass gauge, 40 x 30 SWG, cadmium plated	QR	—	UB2/27	
EA3.56.245	PIPE, assembly, fuel, from non-return valve to fuel cock, starboard side	1	L54 or L56	UB2/2	
EA3.56.247	PIPE, assembly, fuel, from non-return valve to fuel cock, port side	1	L54 or L56	UB2/3	
EA3.56.249	PIPE, assembly, venting, from pipe elbow joint to No. 3 fuel tank junction pipe	1	L56	UB2/4	
EA3.56.251	PIPE, elbow, venting, 1" o/d x 20 SWG	1	L56	UB2/5	
EEAS66/3	RING, clamping	4	L56	UB2/6	
EA3.56.45	SCREW, trunnion	2	S95	UB1/17	
—	STRIP, bonding, 1/4" wide x 22 SWG	QR	Copper	UB2/28	
EA3.56.243	TANK, ASSEMBLY	1	—	UB2/7	
	Spares for:—				
EA3.81.2689/2	CABLE ASSEMBLY, CS.3 from aft fuel pump to suppressor	1	—	UB2/8	
EA3.81.2691/2	CABLE ASSEMBLY, CS.4, from forward fuel pump to suppressor	1	—	UB2/9	
EA3.81.2527/2	CABLE ASSEMBLY, CS.2A, from suppressor to plug bracket	1	—	UB2/10	

TANKS
VENTRAL TANK

Part Number	Description						No. Off	Mati. Spec.	Plate No.
	1	2	3	4	5	6			
AS2398	1	—	UB1/18
			
AGS2001/C/1/66	12	—	UB1/19
EA3.56.291	1	—	UB1/20
SP15/C	12	—	UB1/21
EA3.56.119	1	—	UB1/22
EA3.56.107	2	L72	UB2/11
A25/2C	2	—	UB2/12
SP13C	2	—	UB2/13
AGS1104/B	2	—	UB2/14
EA3.56.171	1	L59	UB1/23
A25/3C	10	—	UB1/24
EA3.56.117	2	Neo-K-Tex	UB1/25
DOWTY			
SP815/2	10	—	UB1/26
EA3.56.81	2	L72	UB1/27
AGS2001/C/1/66	14	—	UB1/28
EA3.56.83	2	Neo-K-Tex	UB1/29
SP15C	14	—	UB1/30
AGS1142J	2	—	UB2/15
EA3.56.283	1	L56	UB2/16
EA3.56.285	1	L56	UB2/17
EA3.56.433	2	L56	UB2/18
SELF			
PRIMING			
ENG.			
SPE.1003Mk.4	2	—	UB2/19
AGS2001/C/1/66	14	—	UB2/20
EA3.56.83	1	Neo-K-Tex	UB2/21
SP15C	14	—	UB2/22
EA3.56.477	1	—	UB1/31
A25/4C	34	—	UB1/32
DOWTY			
SP815/2	34	—	UB1/33
EA3.56.479	1	Neo-K-Tex	UB1/34
SP15C	34	—	UB1/35

AP 101B-0402-3A

TANKS
VENTRAL TANK

Part Number	Description	No. Off	Matl. Spec.	Plate No.
TYPE 'O' No.2	. . . SUPPRESSOR, type O, No.2	2	—	UB2/23
A39/B20	Attaching parts for TYPE 'O' No.2:— . . . Screw, 4BA	4	—	UB2/24
AGS1105J	. . . UNION	2	—	UB2/19B
AS2573	. . . VALVE, drain, assembly Attaching parts for AS2573:	1	—	UB1/36
AGS2001/C/1/66	. . . Nut, stiff, 2BA	8	—	UB1/37
SP15C	. . . Washer	8	—	UB1/38
AS410	. . . Washer, sealing	1	Neo-K-Tex	UB1/39
K.A.C. LTD				
AS4760	. . . VALVE, drain, water sediment	1	—	UB1/40
AGS568J	. . . WASHER, jointing	2	—	UB2/19A
EA3.56.47	. . . TRUNNION, strap, R.H.	2	S95	UB1/41
EA3.56.49	. . . TRUNNION, strap L.H.	2	S95	UB1/42
SELF PRIMING				
ENG. SPE.1706	. . . VALVE, non-return, type P24A, Mk.2 (Pre Mod.2690)	2	—	
SPE.2706	. . . VALVE, non-return, type P24A Mk.3 (Mod.2690)	2	—	UB2/25
EA3.57.5041	TANK, 300 GALLON, FUEL, CENTRE FUSELAGE, FORWARD POSITION, INSTALLATION (Mod.3757-S.O.O.) Spares for:	—	—	
EA3.57.5043	. FUEL AND VENT SYSTEM Spares for:	—	—	UB3/5
EA3.57.5047	. . . BUNG, blanking, for fuel pipes when tank is not fitted	2	—	UB3/11
EEAS143/26H	. . . CLIP, pipe, vent, bonding	13	—	UB3/12
AS4525/20	. . . CLIP, pipe, fuel, bonding	4	—	UB3/13
EA3.57.5045	. . . CLIP, pipe, fuel Attaching parts for EA3.57.5045:	13	L72	UB3/14
A25/4C	. . . Bolt, 2BA	2	—	UB3/15
AGS2001C1-66	. . . Nut, 2BA	2	—	UB3/16
EA3.57.5055	. . . Packing	AR	BS2572	UB3/17
SP15C	. . . Washer	2	—	UB3/18
EA3.57.5049	. . . FAIRLEAD, at floor girder 19	1	BS2572	UB3/19
EA3.57.5051	. . . FAIRLEAD, at floor girder 20 Attaching parts for EA3.57.5049 and EA3.57.5051:	1	BS2572	UB3/20
A25/10C	. . . Bolt, 2BA	2	—	UB3/21
AGS2001/C/1/66	. . . Nut, 2BA	2	—	UB3/22
SP15C	. . . Washer	2	—	UB3/23
EA3.57.5053	. . . FAIRLEAD, at floor girder 21 Attaching parts for EA3.57.5053:	2	BS2572	UB3/24
A25/9C	. . . Bolt, 2BA	2	—	UB3/25
SP47C	. . . Washer, 2BA	2	—	UB3/27

TANKS
VENTRAL TANK

Part Number	Description	No. Off	Matl. Spec.	Plate No.
EEAS164/16/25	. . HOSE, rubber 1" i/d x 2.5" long, vent pipe	3	BSF67	UB3/28
EEAS166/20/30	. . HOSE, rubber, 1 1/4" i/d x 3" long, fuel pipe (Make from Ref.32C/1275041)	2	Type 1 BSF67	UB3/29
AS3360/C5C	. . LEAD, bonding	3	—	UB3/30
AS3360/C6C	. . LEAD, bonding	2	—	UB3/31
AGS1142/J	. . NIPPLE, adaptor	2	—	UB3/32
AGS2120/H	. . NIPPLE	1	—	UB3/33
AGS2120/J	. . NIPPLE	2	—	UB3/34
EA3.57.5061	. . PIPE, assembly, fuel from hose connection at frame 19 to coupling between frames 21 and 22, starboard	1	L54 or L56	UB3/35
EA3.57.5063	. . PIPE, assembly, fuel, from coupling between frames 21 and 22 to coupling at fuel valve, starboard	1	L54 or L56	UB3/36
EA3.57.5065	. . PIPE, assembly, fuel, from coupling at fuel valve to coupling at frame 22, port	1	L54 or L56	UB3/37
EA3.57.5067	. . PIPE, assembly, fuel, from coupling at frame 22 to connection at frame 19, port	1	L54 or L56	UB3/38
EA3 57.5069	. . PIPE, assembly, vent, from floor hose connection aft of frame 27 to hose connection forward of frame 27, 1" o/d x 20 SWG	1	L54 or L56	UB3/39
EA3.57.5073	. . PIPE, assembly, vent between hose connections forward of frame 22 and aft of frame 26, 1" o/d x 20 SWG	1	L54 or L56	UB3/40
EA3.57.5075	. . PIPE, assembly, vent, from floor hose connection aft of frame 27 to coupling at branch pipe	1	L54 or L56	UB3/43
EA3.57.5079	. . PIPE, assembly, vent inlet to vent valve	1	L54	UB3/44
AGS1143/H	. . PLUG, cone, for blanking off vent pipe when tank is not fitted	1	—	UB3/45
EEAS66/3	. . RING, clamping, vent pipe hose clips	6	L72	UB3/46
EEAS66/5	. . RING, clamping, fuel pipe hose clips	4	L72	UB3/47
EEAS21/9	. . WASHER, for bonding clips	10	—	UB3/48

TANKS
VENTRAL TANK

Part Number	Description	No. Off	Matl. Spec.	Plate No.
R EA3.56.697	TANK, 300 GALLON, INSTALLATION Spares for:—	—	—	UB4/1
R EA3.56.261	BRACKET AND STRAP ASSEMBLY Spares for:—	4	—	UB4/2
R EA3.56.361	BRACKET, sub-assembly	1	—	UB4/3
R EA3.56.363	STRAP, tank Attaching parts for EA3.56.361 and EA3.56.363:—	1	—	UB4/4
R A59/47N	Bolt, ½" BSF (Make from A25/48N)	1	—	UB4/5
R EA3.56.465	Bush	2	—	UB4/6
R EA3.56.467	Link-plate	2	—	UB4/7
R A27NS	Nut, slotted, ½" BSF	1	—	UB4/8
R EA3.56.463	Tube, distance	1	—	UB4/9
R SP13N	Washer Attaching parts for EA3.56.261:—	2	—	UB4/10
R A25/38½J	Bolt, 3/8" BSF (Make from A25/39J)	1	—	UB4/11
R A25/38½L	Bolt, 7/16" BSF (Make from A25/39L)	1	—	UB4/12
R A27/JS	Nut, slotted, 3/8" BSF	1	—	UB4/13
R A27/LS	Nut, slotted, 7/16" BSF	1	—	UB4/14
R SP90C7	Pin, split	1	—	UB4/15A
R SP90E8	Pin, split	2	—	UB4/16A
R SP13J	Washer	2	—	UB4/15
R SP13L	Washer	2	—	UB4/16
SP144/028	CLIP, hose	2	—	UB3/25A
EEAS143/26H	CLIP, pipe, vent, bonding Attaching parts for EEAS143/26H:—	2	—	UB3/26
A25/1C	Bolt, 2BA	1	—	UB3/26A
A27/CP	Nut, 2BA	1	—	UB3/26B
EEAS21/9/H	Washer	1	—	UB3/26C
SP47/C	Washer, spring	1	—	UB3/26D
EEAS164/16/25	HOSE, rubber, 1" x 2.5" long, vent pipe	1	BSF67 Type 1	UB3/1
AS3360/C5C	LEAD, bonding	1	—	UB3/2A
EA3.57.5057	PIPE, assembly, fuel, from hose connection at frame 19 to non-return valve, port	1	L54 or L56	UB3/2
EA3.57.5059	PIPE, assembly, fuel, from hose connection at frame 19 to non-return valve, starboard	1	L54 or L56	UB3/3
EA3.57.5071	PIPE, assembly, vent, from tank vent pipe hose connection to connection at frame 22, 1" o/d x 20 SWG	1	L54 or L56	UB3/4
R EEAS66/3	RING, clamping, vent pipe hose clips	2	L72	UB3/6
R EA3.56.45	SCREW, trunnion	2	S95	UB4/17
EA3.56.243	TANK, ASSEMBLY Spares for:—	1	—	UB3/7
EA3.81.2689/2	CABLE, ASSEMBLY, CS3, from aft fuel pump to suppressor	1	—	UB3/8
EA3.81.2691/2	CABLE ASSEMBLY, CS4, from forward fuel pump to suppressor	1	—	UB3/9
EA3.81.6027	CABLE ASSEMBLY, CS2A, from suppressor to plug bracket (Mod. 3757-S.O.O.)	1	—	UB3/10

TANKS
VENTRAL TANK

Part Number	Description	No. Off	Mati. Spec.	Plate No.
R AS2398 CAP, filler assembly Attaching parts for AS2398:—	1	—	UB4/18
R AGS2001/C/1/66 Nut, stiff, 2BA	12	—	UB4/19
R EA3.56.291 Ring, sealing	1	—	UB4/20
R SP15C Washer	12	—	UB4/21
R EA3.56.119 CARTRIDGE, moisture absorber	1	—	UB4/22
R EA3.56.107 CLIP, fuel pipe Attaching parts for EA3.56.107:—	2	L72	UB2/11
R A25/2C Bolt, 2BA	2	—	UB2/12
R SP13C Washer	2	—	UB2/13
R AGS1104B CONE, adaptor, for drain pipes	2	—	UB2/14
R EA3.56.171 CONTAINER, cartridge Attaching parts for EA3.56.171:—	1	L59	UB4/23
R A25/3C Bolt, 2BA	10	—	UB4/24
R EA3.56.117 Ring, sealing	2	Neo-K-Tex	UB4/25
R DOWTY Seal	10	—	UB4/26
R SP815/2 Seal	10	—	UB4/26
R EA3.56.81 COVER, access, tank end Attaching parts for EA3.56.81:—	2	L72	UB4/27
R AGS2001/C/1/66 Nut, stiff, 2BA	14	—	UB4/28
R EA3.56.83 Ring, sealing	2	Neo-K-Tex	UB4/29
R SP15C Washer, 2BA	14	—	UB4/30
R AGS1142J NIPPLE, adaptor	2	—	UB2/15
R EA3.56.283 PIPE, assembly, from non-return valve to aft fuel pump, port	1	L56	UB2/16
R EA3.56.285 PIPE, assembly, from non-return valve to forward fuel pump, starboard	1	L56	UB2/17
R EA3.56.443 PIPE, drain, assembly	2	L56	UB2/18
R SELF PRIMING ENG. SPE.1003 Mk.4 PUMP, fuel Attaching parts for SPE.1003 Mk.4:—	2	—	UB2/19
R AGS2001/C/1/66 Nut, stiff, 2BA	14	—	UB2/20
R EA3.56.83 Ring, sealing	1	Neo-K-Tex	UB2/21
R SP15C Washer	14	—	UB2/22

TANKS

VENTRAL TANK

Part Number	1 2 3 4 5 6	Description	No. Off	Matl. Spec.	Plate No.
R EA3.56.477	. . .	SUMP, tank, assembly	1	-	UB4/31
R A25/4C DOWTY	. . .	Attaching parts for EA3.56.477:- Bolt, 2BA	34	-	UB4/32
R SP815/2	. . .	Seal	34	-	UB4/33
R EA3.56.479	. . .	Seal, tank, sump	1	Neo-K-Tex	UB4/34
R SP15C	. . .	Washer	34	-	UB4/35
EL26317	. . .	SUPPRESSOR, type O, No. 2	2	-	UB2/23
A39/B20	. . .	Attaching parts for EL26317 Screw, 4BA	4	-	UB2/24
R A1105/J AS2573	. . .	UNION VALVE, drain, assembly	2 1	- -	UB2/19B UB4/36
R AGS2001/C/1/66	. . .	Attaching parts for AS2573:- Nut, stiff, 2BA	8	-	UB4/37
R SP15C	. . .	Washer	8	-	UB4/38
R AS410	. . .	Washer, sealing	1	Neo-K-Tex	UB4/39
R K.A.C. LTD. C3191	. . .	VALVE, drain, water sediment	1	-	UB4/40
R AGS568J	. . .	WASHER, jointing	2	-	UB2/19A
R EA3.56.47	. . .	TRUNNION, strap, R.H.	2	S95	UB4/41
R EA3.56.49	. . .	TRUNNION, strap, L.H.	2	S95	UB4/42
SELF PRIMING ENG. SPE.1706	. . .	VALVE, non-return, type P24A, Mk. 2 (Pre-Mod 2690)	2	-	
SPE.2706	. . .	VALVE, non-return, type P24A, Mk. 3 (Mod 2690)	2	-	UB2/25

CHAPTER UB
FIGURES TO BE ISSUED LATER

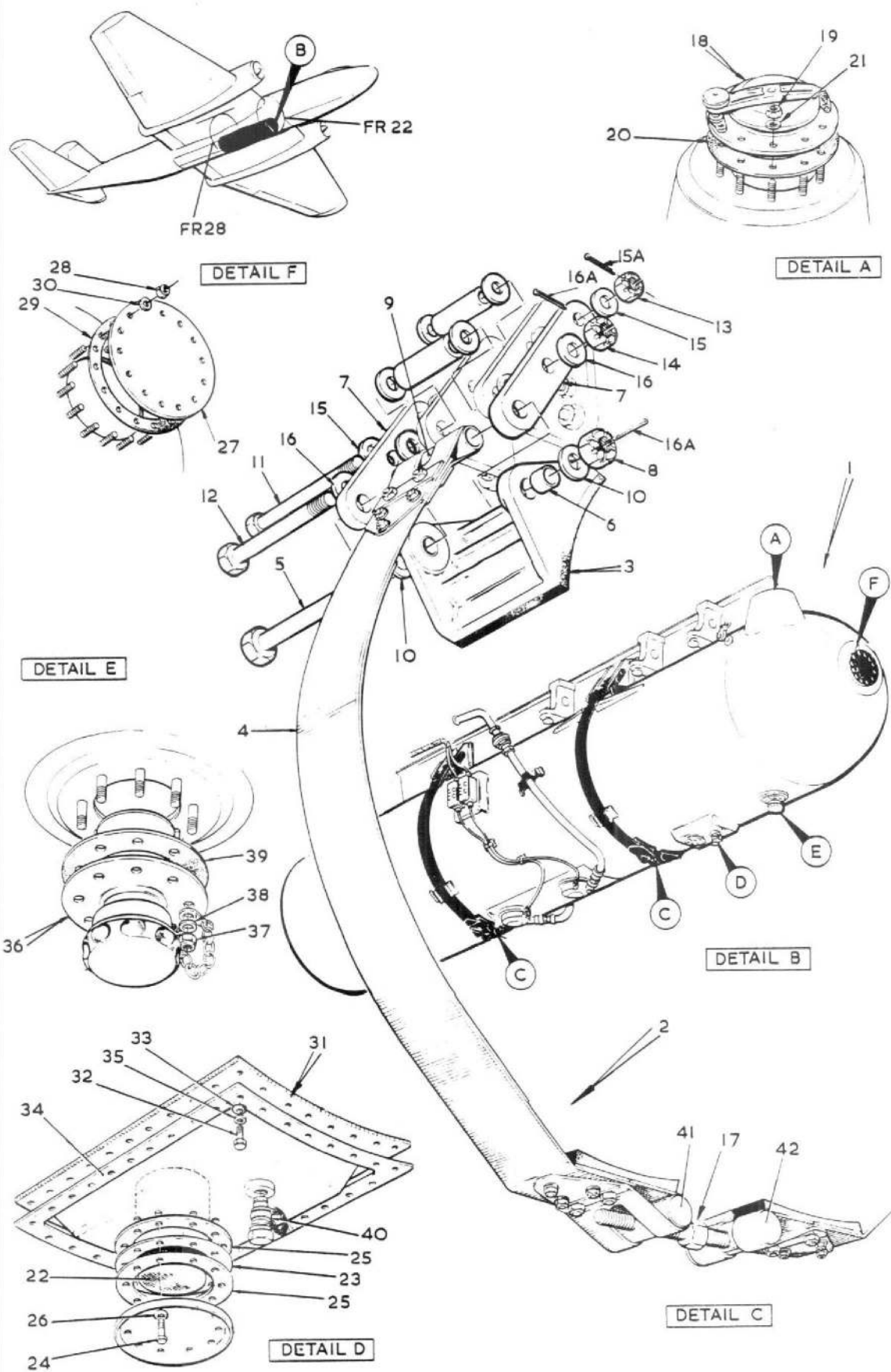


FIG 1 VENTRAL TANK TO FUSELAGE

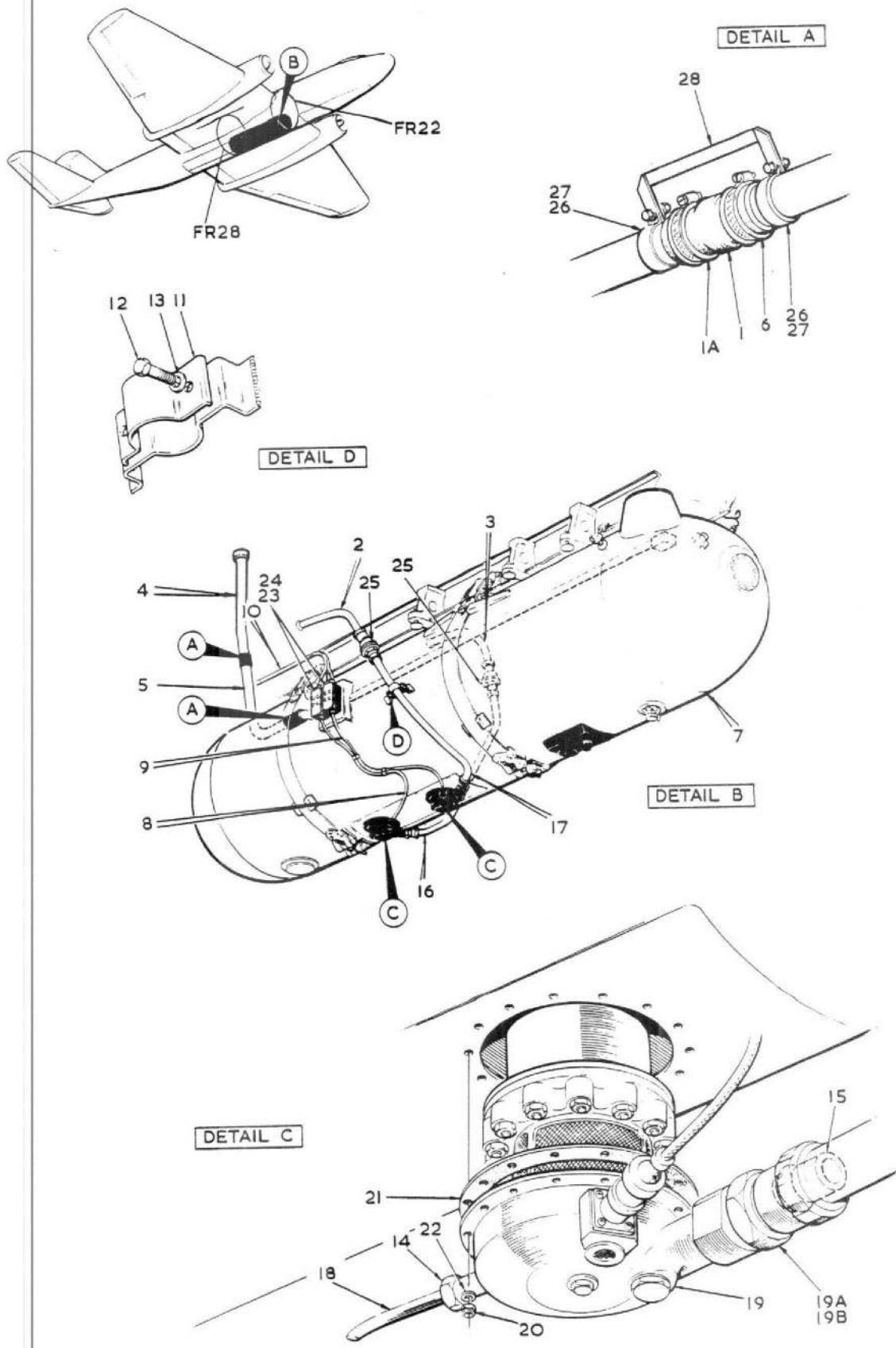


FIG 2 VENTRAL TANK TO FUSELAGE

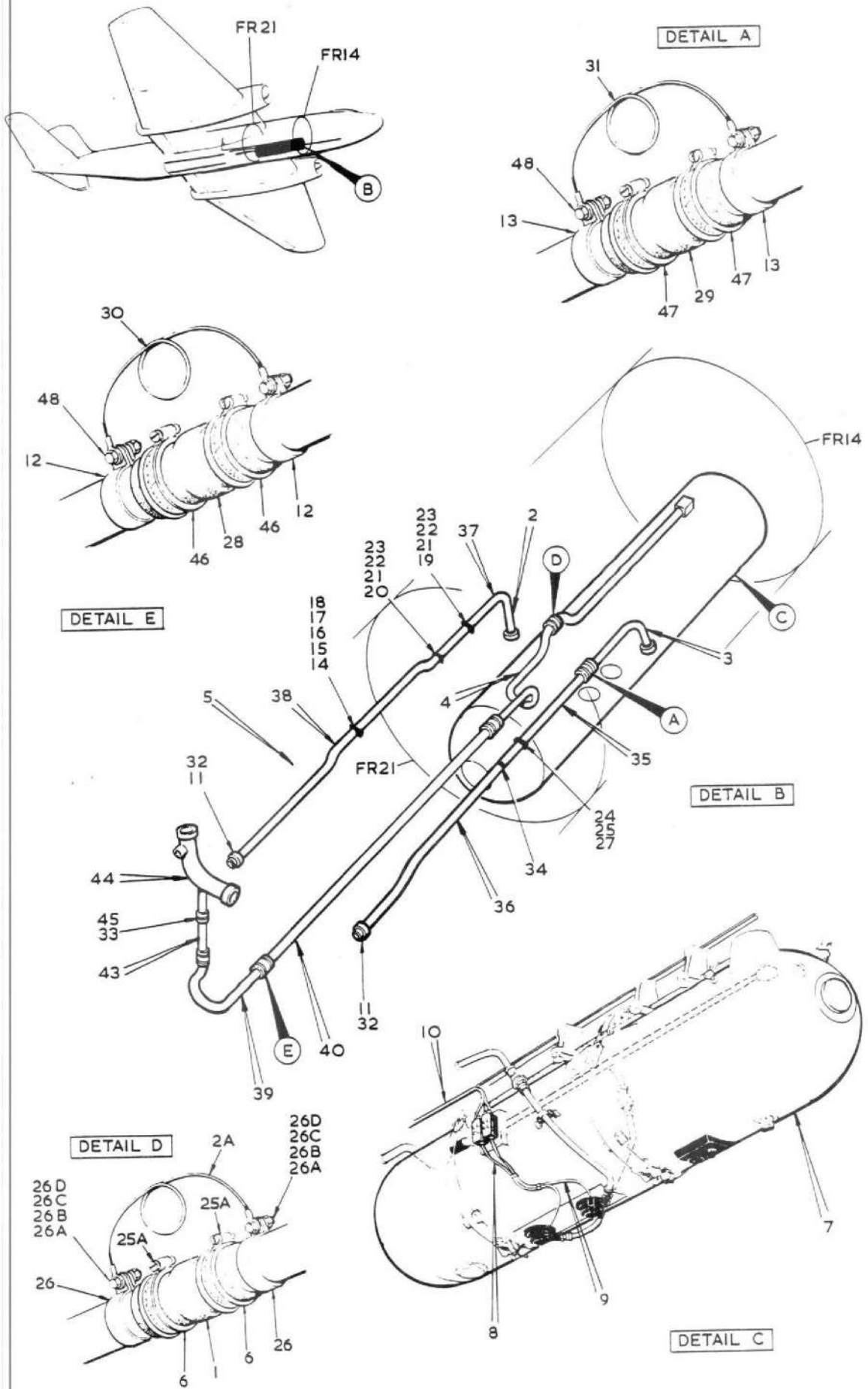


FIG 3 VENTRAL TANK TO FUSELAGE

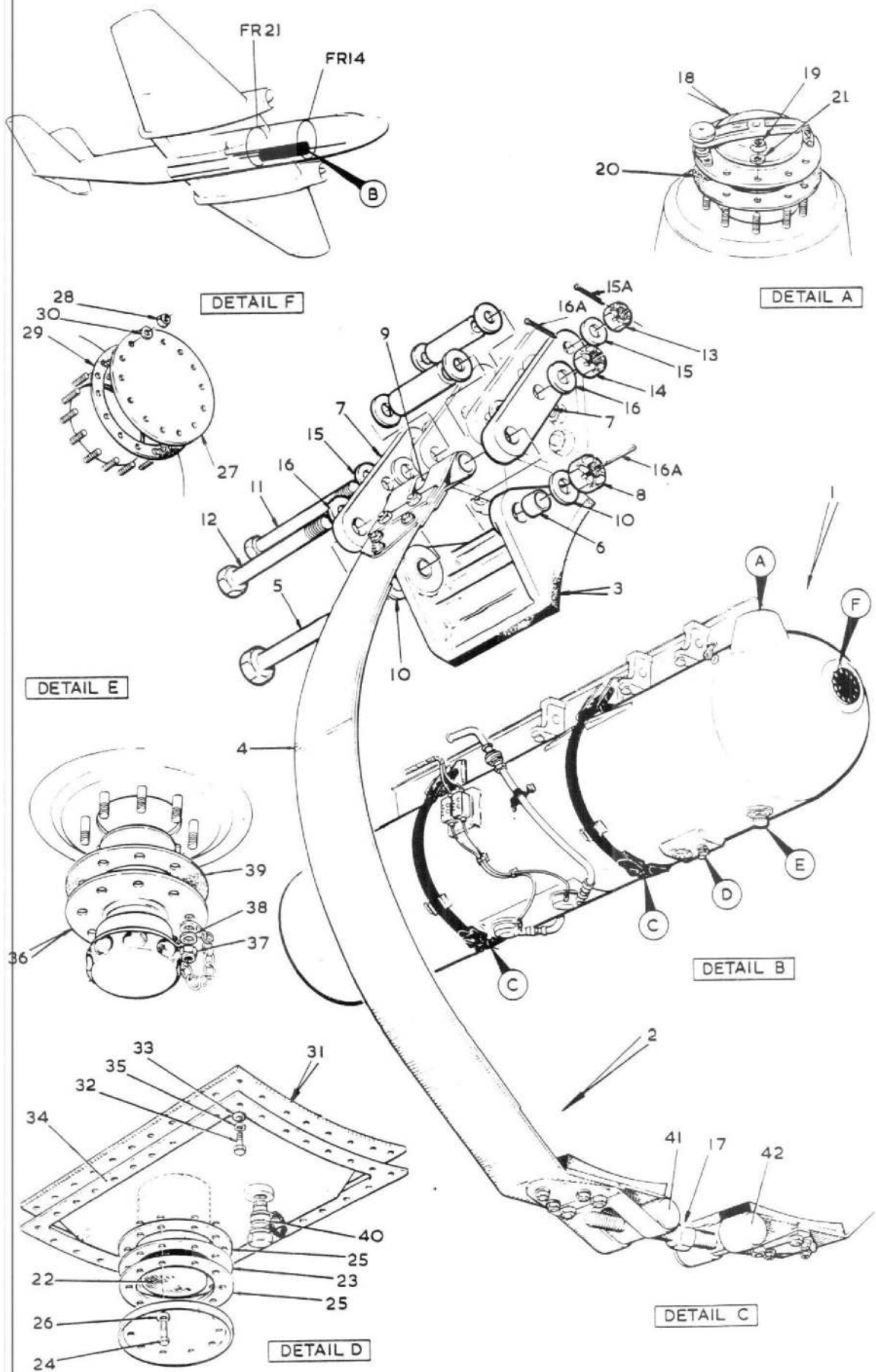
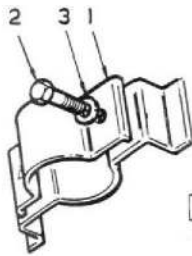
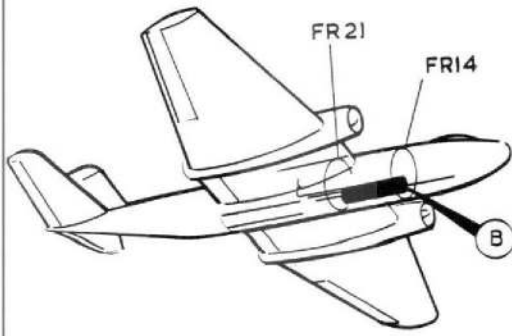
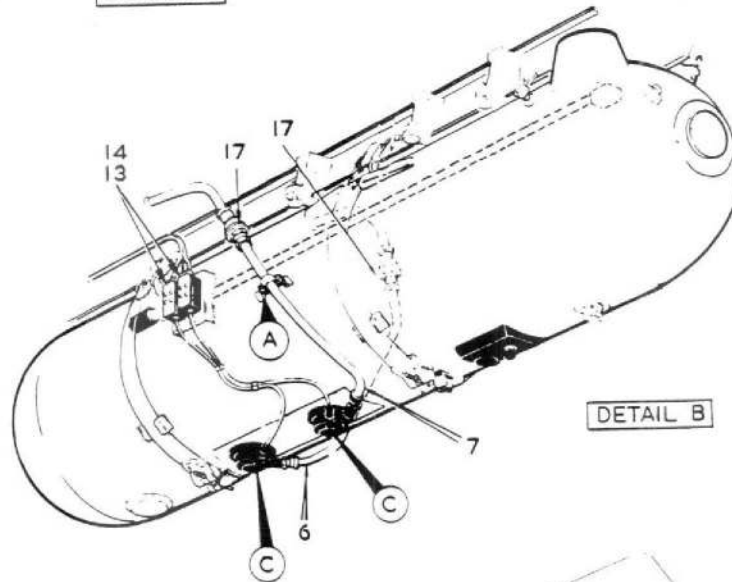


FIG 4 VENTRAL TANK TO FUSELAGE



DETAIL A



DETAIL B

DETAIL C

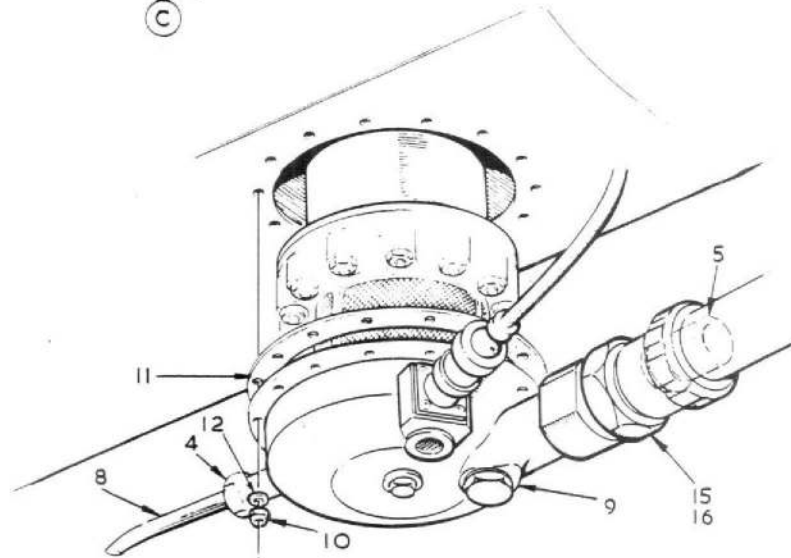


FIG 5 VENTRAL TANK TO FUSELAGE

This file was downloaded
from the RTFM Library.

Link: www.scottbouch.com/rtfm

Please see site for usage terms,
and more aircraft documents.

