

## CONTROLS

## ENGINE CONTROLS IN WING PORT

| Part Number | Description  | No. Off | Matl. Spec. | Plate No. |
|-------------|--|---------|-------------|-----------|
|             |  |         |             |           |
| EA3.47.21   | CONTROLS, ENGINE IN WING PORT, ASSEMBLY                              | —       | —           |           |
|             | Spares for:—   |         |             |           |
| EA1.47.81   | . BLOCK, split, sealing, at rib 1<br>Attaching parts for EA1.47.81:— | 1       | —           | CC1/1     |
| A25/2B      | . Bolt, 4BA  | 6       | —           | CC1/2     |
| AGS2001B1   | . Nut, 4BA   | 6       | —           | CC1/3     |
| SP15C       | . Washer   | 6       | —           | CC1/4     |
| EA1.47.15   | . LEVER, CONTROL CONNECTING ASSEMBLY<br>(PRE-MOD 5028)               | 1       | —           | CC1/5     |
| EA3.47.187  | . LEVER, CONTROL CONNECTING ASSEMBLY<br>(MOD 5028)                   | 1       | —           |           |
|             | Spares for:—   |         |             |           |
| SKEFKO      |  |         |             |           |
| EE.4        | . . BEARING, ballrace, throttle                                      | 1       | —           | CC1/6     |
| SKEFKO      |  |         |             |           |
| EE.5        | . . BEARING, ballrace shut-off cock                                  | 1       | —           | CC1/7     |
| EA1.47.63   | . . CUP, lever, mounting, throttle                                   | 1       | L64         | CC1/8     |
| EA1.47.57   | . . CUP, lever, mounting, shut-off cock                              | 1       | L64         | CC1/9     |
| EA1.47.61   | . . COVER, plate, bearing, throttle                                  | 1       | L64         | CC1/10    |
| EA1.47.55   | . . COVER, plate, bearing, shut-off cock                             | 1       | L64         | CC1/11    |
| HOFFMANN    |  |         |             |           |
| CJO         | . . JOINT, self aligning   | 4       | —           | CC1/12    |
| EA1.47.69   | . . LEVER, control, throttle (Pre-Mod 5028)                          | 1       | L72         | CC1/13    |
| EA3.47.191  | . . LEVER, control, throttle (Mod 5028)                              | 1       | L72         |           |
| EA1.47.67   | . . LEVER, control, shut-off cock (Pre-Mod 5028)                     | 1       | L72         | CC1/14    |
| EA3.47.189  | . . LEVER, control, shut-off cock (Mod 5028)                         | 1       | L72         |           |
| EA1.47.59   | . . SLEEVE, spacing  | 1       | L64         | CC1/15    |
| EA1.47.53   | . . SPINDLE, control   | 1       | L65         | CC1/16    |
| EA1.47.65   | . . WASHER, clamping   | 1       | L64         | CC1/17    |
| EA3.47.175  | . LEVER, control and mounting assembly (Pre-Mod 5177)                | 1       | —           | CC1/18    |
| EA3.47.279  | . LEVER, control and mounting assembly (Mod 5177)                    | 1       | —           |           |
|             | Attaching parts for EA3.47.175 or EA3.47.279:—                       |         |             |           |
| A25/6C      | . Bolt, 2BA  | 2       | —           | CC1/19    |
| A25/3E      | . Bolt, 1/4" BSF   | 1       | —           | CC1/20    |
| A25/4E      | . Bolt, 1/4" BSF   | 1       | —           | CC1/21    |
| A27CS       | . Nut, 2BA   | 2       | —           | CC1/22    |
| A27ES       | . Nut, 1/4" BSF  | 2       | —           | CC1/23    |
| SP90C4      | . Pin, split   | 4       | —           | CC1/24    |
| SP15E       | . Washer   | 2       | —           | CC1/25    |
| SP15C       | . Washer   | 2       | —           | CC1/26    |
| EA3.47.23   | . TUBE, CONTROL ASSEMBLY (PRE-MOD 2621)                              | 2       | —           | CC1/27    |
| EA4.47.551  | . TUBE, CONTROL ASSEMBLY (MOD 2621)                                  | 2       | —           |           |
|             | Spares for:—   |         |             |           |
| EA3.47.53   | . . FORK-END, adjustable   | 1       | —           | CC1/28    |
| A27JT       | . . NUT, 3/8" BSF  | 1       | —           | CC1/29    |

## CONTROLS

## ENGINE CONTROLS IN WING PORT

| Part Number | Description  | No.<br>Off | Mati. Spec. | Plate No. |
|-------------|--|------------|-------------|-----------|
|             |  |            |             |           |
| EA3.47.25   | . TUBE, CONTROL ASSEMBLY<br>Spares for:—                         | 1          | —           | CC1/30    |
| R EA3.47.49 | . . FORK-END, adjustable   | 1          | —           | CC1/31    |
| A27ET       | . . NUT, 1/4" BSF  | 1          | —           | CC1/32    |
| EA3.47.33   | . TUBE, CONTROL ASSEMBLY   | 1          | —           | CC1/33    |
| EA3.47.31   | . TUBE, CONTROL ASSEMBLY<br>Spares for:—                         | 1          | —           | CC1/34    |
| AGS385B     | . . BOLT, ball   | 1          | —           | CC1/35    |
| EA3.47.41   | . . FORK-END, control tube                                       | 1          | —           | CC1/36    |
| R A27ET     | . . NUT, thin  | 2          | —           | CC1/37    |
| R A27ETL    | . . NUT, thin, L.H.  | 1          | —           | CC1/38    |
| SP90C5      | . . PIN, split   | 1          | —           | CC1/39    |
| SP28GS      | . . PIN, taper   | 4          | —           | CC1/40    |
| AGS385C     | . . PLUG   | 1          | —           | CC1/41    |
| EA3.47.39   | . . PLUG, end  | 1          | —           | CC1/42    |
| AGS385A     | . . SOCKET   | 1          | —           | CC1/43    |
| EA1.47.359  | . . TURNBUCKLE   | 1          | —           | CC1/44    |
| EA3.47.29   | . TUBE, control, assembly<br>Attaching parts for control tubes:— | 1          | —           | CC1/45    |
| EEAS12/1    | . Bolt, special  | 2          | S96         | CC1/46    |
| EEAS63      | . Nut, special   | 2          | S96         | CC1/47    |
| SP90C4      | . Pin, split   | 2          | —           | CC1/48    |
| SP15C       | . Washer, spacing  | 4          | —           | CC1/49    |
| EEAS28/3DU  | . Washer (under nut)   | QR         | —           | CC1/50    |

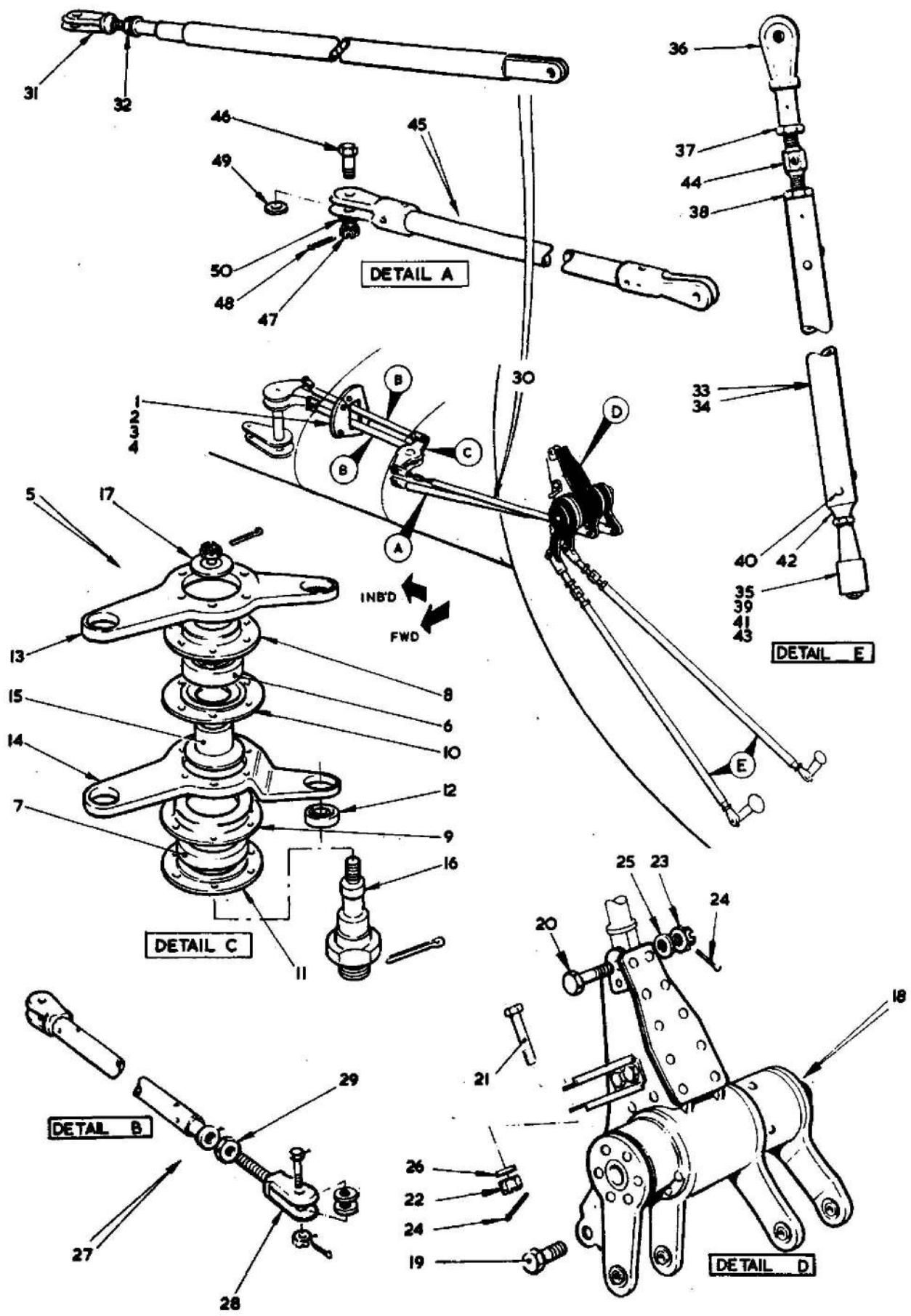


FIG.1 ENGINE CONTROLS IN PORT MAINPLANE

This file was downloaded  
from the RTFM Library.

Link: [www.scottbouch.com/rtfm](http://www.scottbouch.com/rtfm)

Please see site for usage terms,  
and more aircraft documents.

