

AIR PUBLICATION 101B-0407-3A
(FORMERLY AP 4326G VOL 3 PART 1)

February 1981
2nd Edition

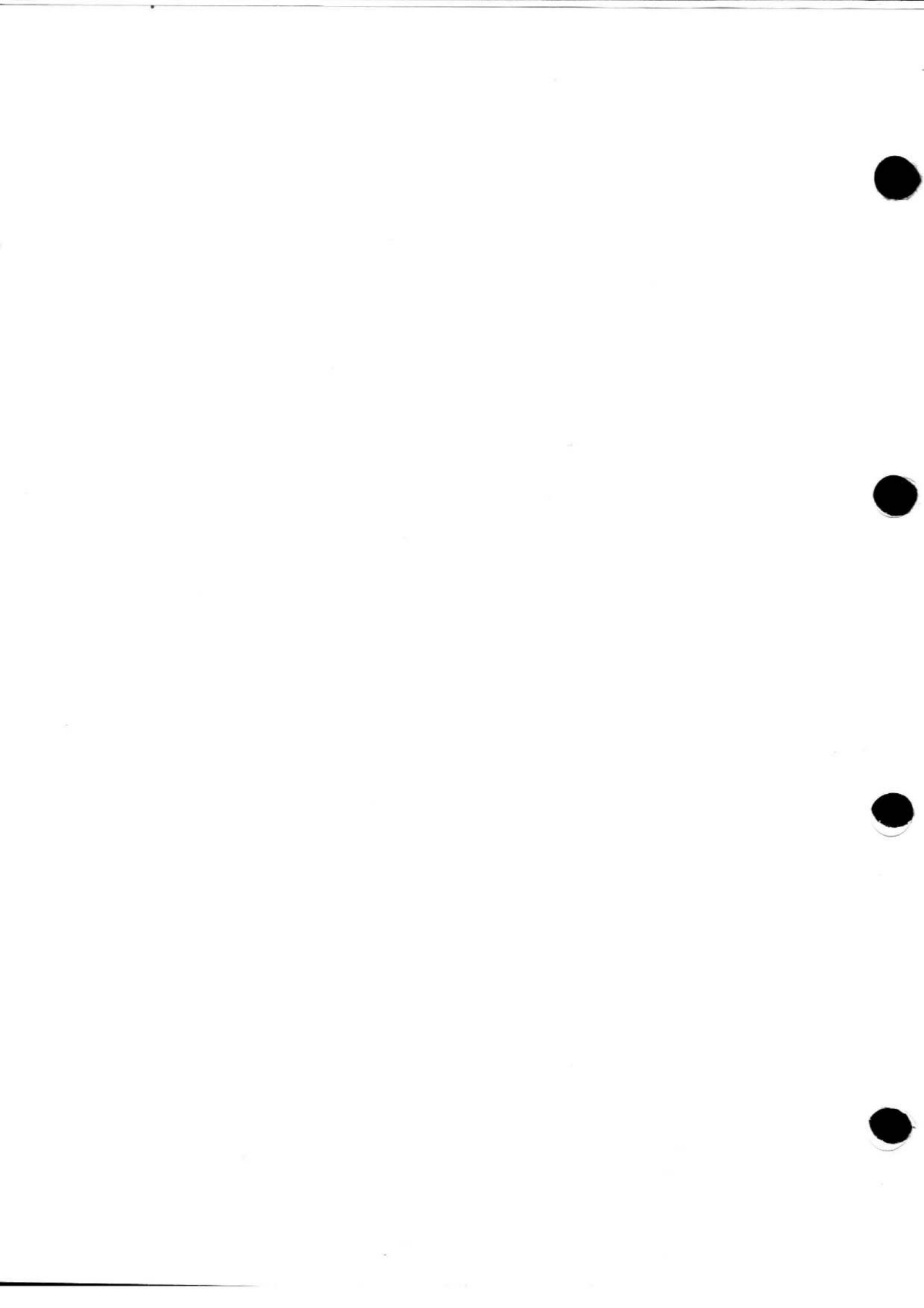
CANBERRA PRMK7

ILLUSTRATED PARTS CATALOGUE

SPECIAL NOTE

THE PURPOSE OF THIS TOPIC 3A IS TO PROVIDE A MEANS OF IDENTIFYING, REQUISITIONING, STORING AND ISSUING SPARE PARTS. THE PUBLICATION MUST NOT BE USED FOR THE DIS-ASSEMBLY, RE-ASSEMBLY, MAINTENANCE, OVERHAUL OR REPAIR PURPOSES.

Sponsored For Use In R.A.F. By D of SM1(R.A.F.)
Publications Authority SM 21(R.A.F.)



CANBERRA PR Mk.7 AIRCRAFT
ILLUSTRATED PARTS CATALOGUE

REMOVAL AND INSERTION OF LEAVES

<u>Remove</u>		<u>Insert</u>	
Fig.1 Section LC	(1 sheet)	Fig.1 Section LC	(1 sheet)
Pages N1 and N2	(1 sheet)	Pages N1 and N2	(1 sheet)
Pages PA9 and PA10	(1 sheet)	Pages PA9 and PA10	(1 sheet)
Pages PB9 and PB10	(1 sheet)	Pages PB9 and PB10	(1 sheet)
Pages TA3 and TA4	(1 sheet)	Pages TA3 and TA4	(1 sheet)
Pages TB3 and TB4	(1 sheet)	Pages TB3 and TB4	(1 sheet)
Index of part numbers		Index of part numbers	
Pages 1 to 276	(138 sheets)	Pages 1 to 339	(170 sheets)
Remove divider cards for index of part numbers supplement 1, 2 and 3.			
Remove all blue part number index pages.			
Index of reference numbers		Index of reference numbers	
Pages 1 to 232	(116 sheets)	Pages 1 to 280	(140 sheets)
Remove divider cards for index of reference numbers supplement 1, 2 and 3.			
Remove all blue reference number index pages.			



MEMORANDUM OF INSTRUCTIONS

Page 1.

1. CONTENTS

This illustrated parts catalogue contains a list of the Airframe Spare Parts embodied in Canberra PR Mk.7 which have been allocated Vocabulary Section 26FZ.

2. DEMANDS

Units are to prepare their demands for spare parts strictly in accordance with A.P.830, Vol. 1. Demands for the parts required to make an airframe serviceable are invariably to quote the Serial Number of the Aircraft. Units are to demand parts for this airframe under Vocabulary Section 26FZ except where the illustrated parts catalogue states otherwise. Where the illustrated parts catalogue states that a part is held under another Vocabulary Section the demand should quote that section after reference to the appropriate publication.

3. Unreferenced airframe items are not normally provisioned as spares. Demands for these items are to be submitted only when required to replace parts which have become unserviceable in use, or to meet anticipated requirements where previous consumption has been recorded. Such demands are to quote the Maker's Part No.
4. Parts qualified by the symbol "LM" are to be manufactured by consumer units. If it is found that the manufacture is beyond the capacity of the unit and the requirement cannot be economically met by fitting an assembly bearing a reference number, then the unit should demand the part required under its part number and endorse the demand "Unable to manufacture Locally".
5. When a Unit requires an unreferenced item which is beyond the Unit's capacity to manufacture or when a referenced part cannot be obtained, consideration should be given to fitting the assembly of which this item is a part, if that assembly bears a reference number.
6. Certain items are annotated "MR". These are normally provisioned for issue only to Units and Contractors authorised to undertake the major repair of Canberra PR Mk.7 airframes.

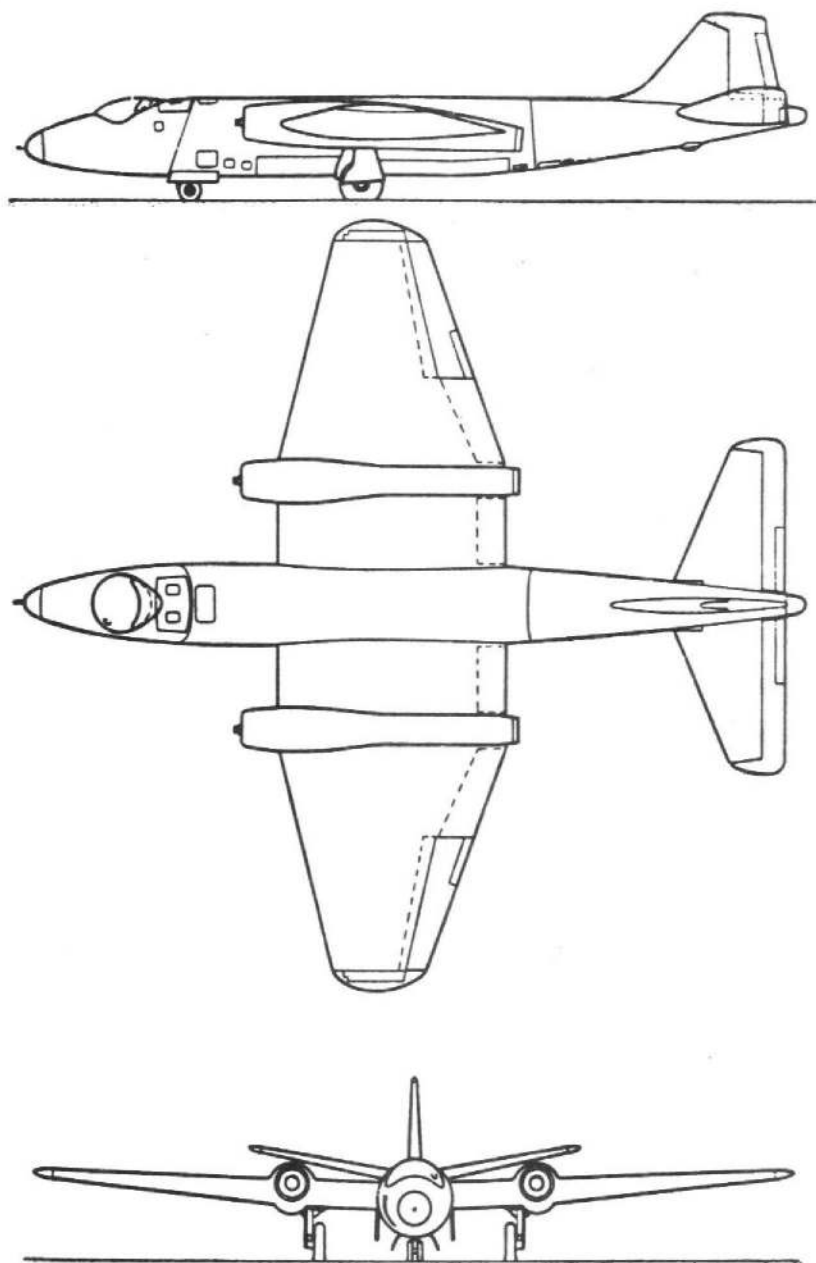
7. MODIFICATIONS (CLASSES 1 or 2)

When an item is introduced by a modification the modification number is shown after the description of the item. Redundant items are deleted from the text.

8. MODIFICATIONS (CLASSES 3 and 4) AND AMENDMENTS

When an item is introduced by this authority the No. is shown after the description. Parts rendered redundant are not to be deleted from the publication, but description of these items must include the additional words "PRE-MOD.)". New items added must include, in the description, the words "MOD.)".





Duty : Photographic Reconnaissance

Type : Twin Engine Monoplane

DIMENSIONS :	AREAS :	FUEL TANK CAPACITY :
<p>Wing Span : 64 ft. 0 in. Overall Height : 15 ft. 7 in. Overall Length : 66 ft. 8 in. Chord at Root : 19 ft. 0 in. Chord at Tip : 7 ft. 8 in. Mainplane Dihedral :— Inner Wing : 2 deg. Outer Wing : 4 deg. 21 mins. Incidence Mainplane : 2 deg. Incidence Tailplane variable from - 3 deg. 22 mins. to + 2 deg. 22 mins. Tailplane Dihedral : 10 deg.</p>	<p>Mainplane and Ailerons : 960 sq. ft. Ailerons : each 36 sq. ft. Tailplane and Elevators : 191 sq. ft. Elevators : each 28.5 sq. ft. Elevator Trim Tabs : each 2.75 sq. ft. Fin (including Rudder and Tab) : 66.5 sq.ft. Rudder (including horn) : 28 sq. ft. Rudder Trim Tab : 2.64 sq. ft. Aileron Trim Tabs : each 1.82 sq. ft. Inboard Flaps : each 13.13 sq. ft. Outboard Flaps : each 21.32 sq. ft.</p>	<p>No. 1 Tank 260 galls. No. 2 Tank 260 galls. No. 3 Tank 220 galls. No. 4 Tank 220 galls. No. 5 Tank 540 galls. No. 6 Tank (ventral) including collector Box 45 galls., not including 30 galls unusable 417 galls. Mainplane Integral Tanks (Port and Starboard) each 450 galls. Total Fuel 3317 galls.</p>



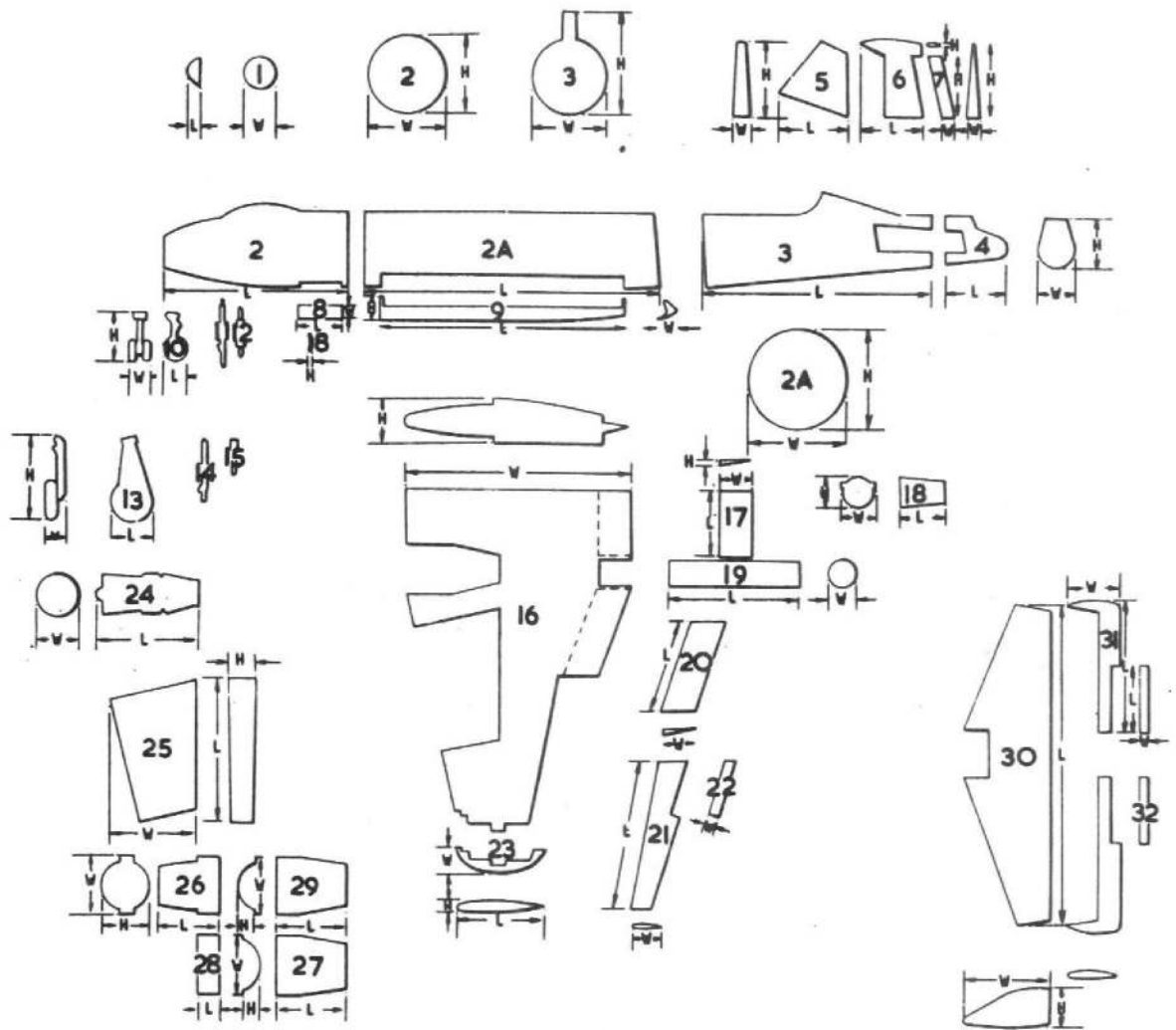
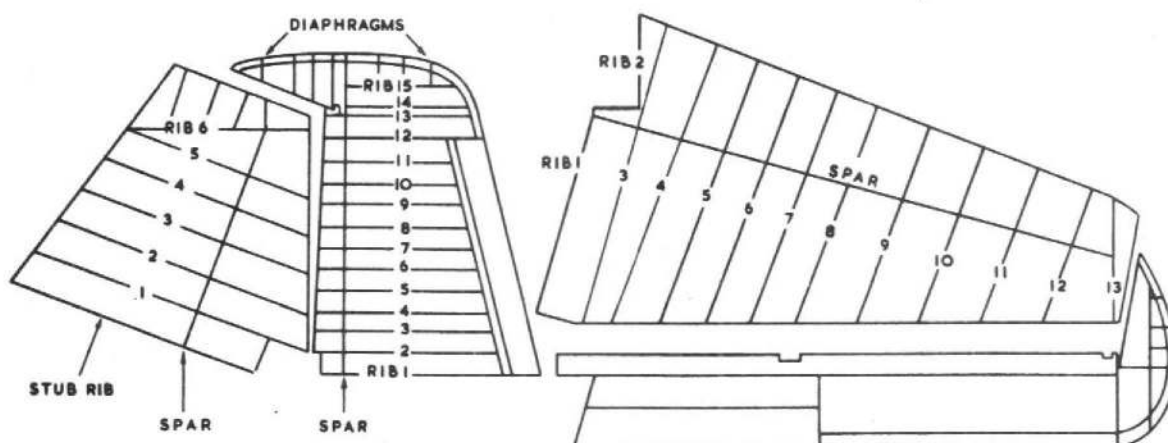
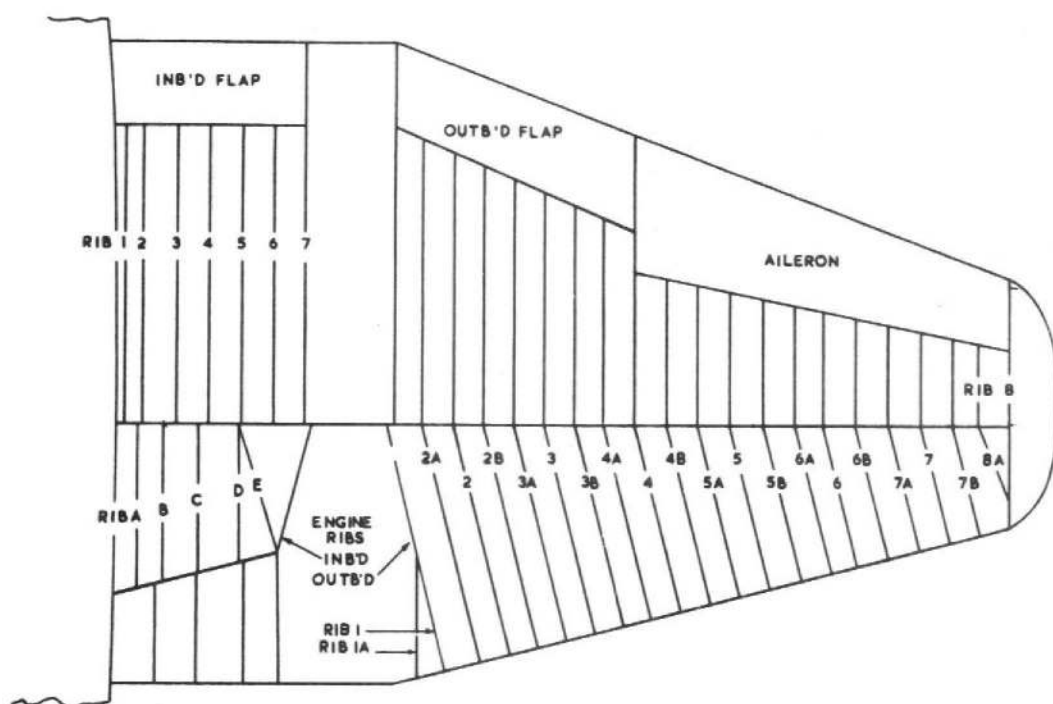
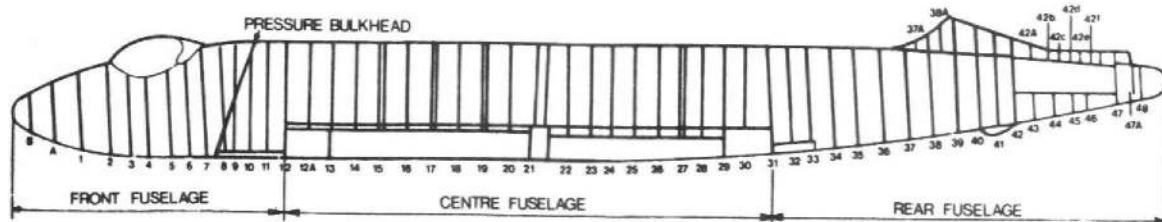


FIG	COMPONENT	LENGTH	WIDTH	HEIGHT	FIG	COMPONENT	LENGTH	WIDTH	HEIGHT
1	Perspex Nose	1' 5"	2' 7" DIA		16	Mainplane	29' 0"	19' 0"	4' 3"
2	Front Fuselage	15' 0"	6' 6" DIA		17	Flap Inboard	5' 7"	2' 6"	3"
2A	Centre Fuselage	27' 1"	7' 7"	6' 6"	18	Jet Pipe Cowl	3' 8"	2' 8"	2' 7"
3	Rear Fuselage	19' 1"	5' 10"	7' 11"	19	Jet Pipe	12' 6"	2' 2" DIA	
4	Rear Cone	4' 9"	2' 5"	2' 10"	20	Flap Outboard	8' 11"	2' 9"	3"
5	Fin	6' 4"	1' 6"	6' 9"	21	Aileron	12' 6"	1' 3"	9"
6	Rudder	7' 1"	1' 3"	7' 0"	22	Aileron Tab	4' 2"	8"	2"
7	Rudder Tab	5' 5"	9"	2"	23	Wing Tips	1' 8"	7' 8"	10"
8	Nose U/C Doors	4' 2"	1' 5"	3"	24	Engines	11' 0"	3' 6" DIA	
9	Flare Bay Doors	11' 5"	3' 0"	1' 8"	25	Integral Tank	11' 4"	6' 9"	2' 2"
10	Nose U/C Wheel and Leg	2' 2"	1' 7"	3' 7"	26	Front Cowl	4' 10"	3' 10" DIA	
11	Nose U/C Radius Rod	3' 11"	4"	8"	27	Top Rear Cowl	5' 6"	2' 0"	1' 3"
12	Nose U/C Jack	2' 2"	5"	6"	28	Service Panel	2' 2"	2' 0"	1' 9"
13	Main U/C Wheel and Leg	6' 3"	3' 11"	2' 1"	29	Bottom Rear Cowl	5' 5"	2' 0"	1' 3"
14	Main U/C Side Stay	2' 9"	8"	8"	30	Tailplane	26' 0"	7' 9"	1' 6"
15	Main U/C Jack	1' 11"	4"	7"	31	Elevator	13' 11"	4' 5"	5"
					32	Elevator Tab	5' 7"	8"	2"

PACKING DIMENSIONS





KEY DIAGRAM OF RIB AND FRAME POSITIONS



MODIFICATION AND AMENDMENT SHEET
(Airframe)

Mod. No.	A.L. No.	Mod. No.	A.L. No.	Mod. No.	A.L. No.	Mod. No.	A.L. No.	Mod. No.	A.L. No.	Mod. No.	A.L. No.
1(M)	††	41(A)	N/A	81(M)	N/A	121(A)	N/A	161(M)	††	201(A)	N/A
2(M)	††	42(A)	N/A	82(M)	††	122(A)	N/A	162(M)	N/A	202(A)	N/A
3(M)	††	43(A)	N/A	83(M)	††	123(A)	N/A	163(M)	††	203(A)	N/A
4(M)	††	44(A)	N/A	84(M)	N/A	124(A)	N/A	164(M)	††	204(A)	N/A
5(M)	N/A	45(A)	N/A	85(M)	††	125(A)	N/A	165(M)	††	205(A)	N/A
6(M)	††	46(A)	N/A	86(M)	††	126(A)	N/A	166(M)	C	206(A)	N/A
7(M)	N/A	47(A)	N/A	87(M)	††	127(A)	N/A	167(M)	N/A	207(A)	N/A
8(M)	††	48(A)	N/A	88(M)	C	128(A)	N/A	168(M)	††	208(A)	N/A
9(M)	††	49(A)	N/A	89(M)	††	129(A)	N/A	169(M)	††	209(A)	N/A
10(M)	††	50(A)	N/A	90(M)	††	130(A)	N/A	170(M)	††	210(A)	N/A
11(M)	††	51(M)	††	91(M)	N/A	131(A)	N/A	171(M)	††	211(A)	N/A
12(M)	††	52(M)	N/A	92(M)	N/A	132(A)	N/A	172(M)	C	212(A)	N/A
13(M)	††	53(M)	††	93(M)	C	133(A)	N/A	173(M)	N/A	213(A)	N/A
14(M)	††	54(M)	††	94(M)	N/A	134(A)	N/A	174(M)	††	214(A)	N/A
15(M)	††	55(M)	††	95(M)	††	135(A)	N/A	175(M)	††	215(A)	N/A
16(M)	††	56(M)	††	96(M)	††	136(A)	N/A	176(M)	††	216(A)	N/A
17(M)	N/A	57(M)	††	97(M)	††	137(A)	N/A	177(M)	††	217(A)	N/A
18(M)	††	58(M)	N/A	98(M)	††	138(A)	N/A	178(M)	††	218(A)	N/A
19(M)	††	59(M)	C	99(M)	††	139(A)	N/A	179(M)	N/A	219(A)	N/A
20(A)	N/A	60(M)	N/A	100(A)	N/A	140(A)	N/A	180(M)	††	220(A)	N/A
21(A)	N/A	61(M)	N/A	101(A)	N/A	141(A)	N/A	181(M)	††	221(A)	N/A
22(A)	N/A	62(M)	††	102(A)	N/A	142(A)	N/A	182(M)	††	222(A)	N/A
23(A)	N/A	63(M)	††	103(A)	N/A	143(A)	N/A	183(M)	††	223(A)	N/A
24(A)	N/A	64(M)	N/A	104(A)	N/A	144(A)	N/A	184(M)	††	224(A)	N/A
25(A)	N/A	65(M)	††	105(A)	N/A	145(A)	N/A	185(M)	††	225(A)	N/A
26(A)	N/A	66(M)	††	106(A)	N/A	146(A)	N/A	186(M)	††	226(A)	N/A
27(A)	N/A	67(M)	††	107(A)	N/A	147(A)	N/A	187(M)	††	227(A)	N/A
28(A)	N/A	68(M)	††	108(A)	N/A	148(A)	N/A	188(M)	††	228(A)	N/A
29(A)	N/A	69(M)	††	109(A)	N/A	149(A)	N/A	189(M)	††	229(A)	N/A
30(A)	N/A	70(M)	C	110(A)	N/A	150(M)	††	190(M)	††	230(A)	N/A
31(A)	N/A	71(M)	††	111(A)	N/A	151(M)	N/A	191(M)	N/A	231(A)	N/A
32(A)	N/A	72(M)	N/A	112(A)	N/A	152(M)	††	192(M)	C	232(A)	N/A
33(A)	N/A	73(M)	††	113(A)	N/A	153(M)	††	193(M)	N/A	233(A)	N/A
34(A)	N/A	74(M)	††	114(A)	N/A	154(M)	††	194(M)	N/A	234(A)	N/A
35(A)	N/A	75(M)	N/A	115(A)	N/A	155(M)	††	195(M)	††	235(A)	N/A
36(A)	N/A	76(M)	N/A	116(A)	N/A	156(M)	††	196(M)	††	236(A)	N/A
37(A)	N/A	77(M)	††	117(A)	N/A	157(M)	††	197(M)	††	237(A)	N/A
38(A)	N/A	78(M)	††	118(A)	N/A	158(M)	N/A	198(M)	††	238(A)	N/A
39(A)	N/A	79(M)	††	119(A)	N/A	159(M)	††	199(M)	††	239(A)	N/A
40(A)	N/A	80(M)	††	120(A)	N/A	160(M)	N/A	200(A)	N/A	240(A)	N/A

†† Incorporated in initial issue of illustrated parts catalogue
 N.A. Mod./Amend. not applicable to this illustrated parts catalogue
 C. Modification/Amendment cancelled
 (A) Amendment
 (M) Modification

MODIFICATION AND AMENDMENT SHEET
(Airframe)

AP101B-0407-3A

Mod. No.	A.L. No.	Mod. No.	A.L. No.	Mod. No.	A.L. No.	Mod. No.	A.L. No.	Mod. No.	A.L. No.	Mod. No.	A.L. No.
241(A)	N/A	281(M)	††	321(M)	††	361(A)	N/A	400(M)	††	440(M)	††
242(A)	N/A	282(M)	N/A	322(M)	††	362(A)	N/A	401(M)	††	441(M)	††
243(A)	N/A	283(M)	††	323(M)	††	363(A)	N/A	402(M)	††	442(M)	††
244(A)	N/A	284(M)	††	324(M)	††	364(A)	N/A	403(M)	††	443(M)	††
245(A)	N/A	285(M)	††	325(M)	††	365(A)	N/A	404(M)	††	444(M)	††
246(A)	N/A	286(M)	††	326(M)	††	366(A)	N/A	405(M)	††	445(M)	††
247(A)	N/A	287(M)	C	327(M)	††	367(A)	N/A	406(M)	N/A	446(M)	††
248(A)	N/A	288(M)	N/A	328(M)	††	368(A)	N/A	407(M)	††	447(M)	††
249(A)	N/A	289(M)	N/A	329(M)	††	369(A)	N/A	408(M)	N/A	448(M)	††
250(M)	††	290(M)	N/A	330(M)	††	370(A)	N/A	409(M)	††	449(M)	††
251(M)	††	291(M)	††	331(M)	N/A	371(A)	N/A	410(M)	††	450(M)	††
252(M)	††	292(M)	††	332(M)	††	372(A)	N/A	411(M)	N/A	451(A)	N/A
253(M)	††	293(M)	††	333(M)	N/A	373(A)	N/A	412(M)	††	452(A)	N/A
254(M)	C	294(M)	††	334(M)	††	374(A)	N/A	413(M)	N/A	453(A)	N/A
255(M)	††	295(M)	††	335(M)	††	375(A)	N/A	414(M)	††	454(A)	N/A
256(M)	††	296(M)	††	336(M)	N/A	376(A)	N/A	415(M)	††	455(A)	N/A
257(M)	N/A	297(M)	N/A	337(M)	††	377(A)	N/A	416(M)	N/A	456(A)	N/A
258(M)	††	298(M)	N/A	338(M)	C	378(A)	N/A	417(M)	N/A	457(A)	N/A
259(M)	††	299(M)	††	339(M)	††	379(A)	N/A	418(M)	††	458(A)	N/A
260(M)	††	300(M)	††	340(M)	††	380(A)	N/A	419(M)	††	459(A)	N/A
261(M)	††	301(M)	††	341(M)	††	381(A)	N/A	420(M)	††	460(A)	N/A
262(M)	††	302(M)	††	342(M)	N/A	382(A)	N/A	421(M)	††	461(A)	N/A
263(M)	N/A	303(M)	††	343(M)	††	383(A)	N/A	422(M)	††	462(A)	N/A
264(M)	††	304(M)	††	344(M)	††	384(A)	N/A	423(M)	N/A	463(A)	N/A
265(M)	††	305(M)	††	345(M)	††	385(A)	N/A	424(M)	††	464(A)	N/A
266(M)	††	306(M)	††	346(M)	††	386(A)	N/A	425(M)	††	465(A)	N/A
267(M)	††	307(M)	N/A	347(M)	††	387(A)	N/A	426(M)	††	466(A)	N/A
268(M)	††	308(M)	††	348(M)	N/A	388(A)	N/A	427(M)	††	467(A)	N/A
269(M)	††	309(M)	††	349(M)	††	389(A)	N/A	428(M)	††	468(A)	N/A
270(M)	††	310(M)	††	350(A)	N/A	390(A)	N/A	429(M)	††	469(A)	N/A
271(M)	††	311(M)	††	351(A)	N/A	391(A)	N/A	430(M)	††	470(A)	N/A
272(M)	N/A	312(M)	††	352(A)	N/A	392(A)	N/A	431(M)	N/A	471(A)	N/A
273(M)	N/A	313(M)	††	353(A)	N/A	393(A)	N/A	432(M)	N/A	472(A)	N/A
274(M)	N/A	314(M)	††	354(A)	N/A	394(A)	N/A	433(M)	††	473(A)	N/A
275(M)	††	315(M)	††	355(A)	N/A	395(A)	N/A	434(M)	††	474(A)	N/A
276(M)	††	316(M)	††	356(A)	N/A	396(A)	N/A	435(M)	N/A	475(A)	N/A
277(M)	††	317(M)	N/A	357(A)	N/A	397(A)	N/A	436(M)	N/A	476(A)	N/A
278(M)	††	318(M)	††	358(A)	N/A	398(A)	N/A	437(M)	††	477(A)	N/A
279(M)	††	319(M)	††	359(A)	N/A	399(A)	N/A	438(M)	††	478(A)	N/A
280(M)	††	320(M)	††	360(A)	N/A			439(M)	N/A	479(A)	N/A

†† Incorporated in initial issue of illustrated parts catalogue
 N.A. Mod./Amend. not applicable to this illustrated parts catalogue
 C. Modification/Amendment cancelled
 (A) Amendment
 (M) Modification

MODIFICATION AND AMENDMENT SHEET
(Airframe)

Mod. No.	A.L. No.	Mod. No.	A.L. No.	Mod. No.	A.L. No.	Mod. No.	A.L. No.	Mod. No.	A.L. No.	Mod. No.	A.L. No.
480(A)	N/A	520(M)	††	560(A)	N/A	600(A)	N/A	640(M)	††	680(A)	N/A
481(A)	N/A	521(M)	††	561(A)	N/A	601(M)	N/A	641(M)	††	681(A)	N/A
482(A)	N/A	522(M)	N/A	562(A)	N/A	602(M)	C	642(M)	††	682(A)	N/A
483(A)	N/A	523(M)	††	563(A)	N/A	603(M)	††	643(M)	††	683(A)	N/A
484(A)	N/A	524(M)	N/A	564(A)	N/A	604(M)	N/A	644(M)	††	684(A)	N/A
485(A)	N/A	525(M)	††	565(A)	N/A	605(M)	N/A	645(M)	N/A	685(A)	N/A
486(A)	N/A	526(M)	N/A	566(A)	N/A	606(M)	††	646(M)	††	686(A)	N/A
487(A)	N/A	527(M)	††	567(A)	N/A	607(M)	††	647(M)	††	687(A)	N/A
488(A)	N/A	528(M)	††	568(A)	N/A	608(M)	N/A	648(M)	N/A	688(A)	N/A
489(A)	N/A	529(M)	N/A	569(A)	N/A	609(M)	N/A	649(M)	††	689(A)	N/A
490(A)	N/A	530(M)	††	570(A)	N/A	610(M)	††	650(M)	N/A	690(A)	N/A
491(A)	N/A	531(M)	††	571(A)	N/A	611(M)	N/A	651(A)	N/A	691(A)	N/A
492(A)	N/A	532(M)	N/A	572(A)	N/A	612(M)	††	652(A)	N/A	692(A)	N/A
493(A)	N/A	533(M)	††	573(A)	N/A	613(M)	††	653(A)	N/A	693(A)	N/A
494(A)	N/A	534(M)	N/A	574(A)	N/A	614(M)	N/A	654(A)	N/A	694(A)	N/A
495(A)	N/A	535(M)	††	575(A)	N/A	615(M)	N/A	655(A)	N/A	695(A)	N/A
496(A)	N/A	536(M)	††	576(A)	N/A	616(M)	N/A	656(A)	N/A	696(A)	N/A
497(A)	N/A	537(M)	††	577(A)	N/A	617(M)	††	657(A)	N/A	697(A)	N/A
498(A)	N/A	538(M)	††	578(A)	N/A	618(M)	††	658(A)	N/A	698(A)	N/A
499(A)	N/A	539(M)	N/A	579(A)	N/A	619(M)	N/A	659(A)	N/A	699(A)	N/A
500(A)	N/A	540(M)	††	580(A)	N/A	620(M)	††	660(A)	N/A	700(A)	N/A
501(M)	††	541(M)	††	581(A)	N/A	621(M)	††	661(A)	N/A	701(M)	N/A
502(M)	††	542(M)	††	582(A)	N/A	622(M)	††	662(A)	N/A	702(M)	N/A
503(M)	N/A	543(M)	††	583(A)	N/A	623(M)	N/A	663(A)	N/A	703(M)	N/A
504(M)	††	544(M)	C	584(A)	N/A	624(M)	N/A	664(A)	N/A	704(M)	††
505(M)	††	545(M)	††	585(A)	N/A	625(M)	††	665(A)	N/A	705(M)	N/A
506(M)	††	546(M)	††	586(A)	N/A	626(M)	N/A	666(A)	N/A	706(M)	N/A
507(M)	††	547(M)	††	587(A)	N/A	627(M)	††	667(A)	N/A	707(M)	††
508(M)	††	548(M)	††	588(A)	N/A	628(M)	††	668(A)	N/A	708(M)	††
509(M)	††	549(M)	N/A	589(A)	N/A	629(M)	N/A	669(A)	N/A	709(M)	††
510(M)	††	550(M)	††	590(A)	N/A	630(M)	††	670(A)	N/A	710(M)	N/A
511(M)	N/A	551(A)	N/A	591(A)	N/A	631(M)	††	671(A)	N/A	711(M)	††
512(M)	††	552(A)	N/A	592(A)	N/A	632(M)	††	672(A)	N/A	712(M)	††
513(M)	††	553(A)	N/A	593(A)	N/A	633(M)	N/A	673(A)	N/A	713(M)	N/A
514(M)	††	554(A)	N/A	594(A)	N/A	634(M)	N/A	674(A)	N/A	714(M)	††
515(M)	††	555(A)	N/A	595(A)	N/A	635(M)	N/A	675(A)	N/A	715(M)	N/A
516(M)	††	556(A)	N/A	596(A)	N/A	636(M)	††	676(A)	N/A	716(M)	††
517(M)	††	557(A)	N/A	597(A)	N/A	637(M)	††	677(A)	N/A	717(M)	††
518(M)	N/A	558(A)	N/A	598(A)	N/A	638(M)	††	678(A)	N/A	718(M)	N/A
519(M)	††	559(A)	N/A	599(A)	N/A	639(M)	††	679(A)	N/A	719(M)	N/A

†† Incorporated in initial issue of illustrated parts catalogue
 N.A. Mod./Amend. not applicable to this illustrated parts catalogue
 C. Modification/Amendment cancelled
 (A) Amendment
 (M) Modification

MODIFICATION AND AMENDMENT SHEET
(Airframe)

Mod. No.	A.L. No.	Mod. No.	A.L. No.	Mod. No.	A.L. No.	Mod. No.	A.L. No.	Mod. No.	A.L. No.	Mod. No.	A.L. No.
720(M)	††	760(A)	N/A	800(A)	N/A	840(A)	N/A	880(M)	††	920(A)	N/A
721(M)	N/A	761(A)	N/A	801(A)	N/A	841(A)	N/A	881(M)	N/A	921(A)	N/A
722(M)	N/A	762(A)	N/A	802(A)	N/A	842(A)	N/A	882(M)	N/A	922(A)	N/A
723(M)	N/A	763(A)	N/A	803(A)	N/A	843(A)	N/A	883(M)	N/A	923(A)	N/A
724(M)	††	764(A)	N/A	804(A)	N/A	844(A)	N/A	884(M)	††	924(A)	N/A
725(M)	N/A	765(A)	N/A	805(A)	N/A	845(A)	N/A	885(M)	††	925(A)	N/A
726(M)	††	766(A)	N/A	806(A)	N/A	846(A)	N/A	886(M)	††	926(A)	N/A
727(M)	††	767(A)	N/A	807(A)	N/A	847(A)	N/A	887(M)	N/A	927(A)	N/A
728(M)	††	768(A)	N/A	808(A)	N/A	848(A)	N/A	888(M)	††	928(A)	N/A
729(M)	N/A	769(A)	N/A	809(A)	N/A	849(A)	N/A	889(M)	††	929(A)	N/A
730(M)	††	770(A)	N/A	810(A)	N/A	850(A)	N/A	890(M)	N/A	930(A)	N/A
731(M)	N/A	771(A)	N/A	811(A)	N/A	851(M)	††	891(M)	††	931(A)	N/A
732(M)	††	772(A)	N/A	812(A)	N/A	852(M)	††	892(M)	N/A	932(A)	N/A
733(M)	††	773(A)	N/A	813(A)	N/A	853(M)	N/A	893(M)	N/A	933(A)	N/A
734(M)	N/A	774(A)	N/A	814(A)	N/A	854(M)	N/A	894(M)	††	934(A)	N/A
735(M)	††	775(A)	N/A	815(A)	N/A	855(M)	N/A	895(M)	††	935(A)	N/A
736(M)	††	776(A)	N/A	816(A)	N/A	856(M)	††	896(M)	N/A	936(A)	N/A
737(M)	††	777(A)	N/A	817(A)	N/A	857(M)	††	897(M)	††	937(A)	N/A
738(M)	††	778(A)	N/A	818(A)	N/A	858(M)	N/A	898(M)	††	938(A)	N/A
739(M)	N/A	779(A)	N/A	819(A)	N/A	859(M)	††	899(M)	††	939(A)	N/A
740(M)	††	780(A)	N/A	820(A)	N/A	860(M)	††	900(A)	N/A	940(A)	N/A
741(M)	N/A	781(A)	N/A	821(A)	N/A	861(M)	††	901(A)	N/A	941(A)	N/A
742(M)	††	782(A)	N/A	822(A)	N/A	862(M)	††	902(A)	N/A	942(A)	N/A
743(M)	N/A	783(A)	N/A	823(A)	N/A	863(M)	††	903(A)	N/A	943(A)	N/A
744(M)	N/A	784(A)	N/A	824(A)	N/A	864(M)	††	904(A)	N/A	944(A)	N/A
745(M)	††	785(A)	N/A	825(A)	N/A	865(M)	††	905(A)	N/A	945(A)	N/A
746(M)	N/A	786(A)	N/A	826(A)	N/A	866(M)	††	906(A)	N/A	946(A)	N/A
747(M)	††	787(A)	N/A	827(A)	N/A	867(M)	††	907(A)	N/A	947(A)	N/A
748(M)	††	788(A)	N/A	828(A)	N/A	868(M)	††	908(A)	N/A	948(A)	N/A
749(M)	††	789(A)	N/A	829(A)	N/A	869(M)	††	909(A)	N/A	949(A)	N/A
750(M)	††	790(A)	N/A	830(A)	N/A	870(M)	N/A	910(A)	N/A	950(A)	N/A
751(A)	N/A	791(A)	N/A	831(A)	N/A	871(M)	N/A	911(A)	N/A	951(A)	N/A
752(A)	N/A	792(A)	N/A	832(A)	N/A	872(M)	N/A	912(A)	N/A	952(A)	N/A
753(A)	N/A	793(A)	N/A	833(A)	N/A	873(M)	N/A	913(A)	N/A	953(A)	N/A
754(A)	N/A	794(A)	N/A	834(A)	N/A	874(M)	††	914(A)	N/A	954(A)	N/A
755(A)	N/A	795(A)	N/A	835(A)	N/A	875(M)	††	915(A)	N/A	955(A)	N/A
756(A)	N/A	796(A)	N/A	836(A)	N/A	876(M)	††	916(A)	N/A	956(A)	N/A
757(A)	N/A	797(A)	N/A	837(A)	N/A	877(M)	††	917(A)	N/A	957(A)	N/A
758(A)	N/A	798(A)	N/A	838(A)	N/A	878(M)	††	918(A)	N/A	958(A)	N/A
759(A)	N/A	799(A)	N/A	839(A)	N/A	879(M)	N/A	919(A)	N/A	959(A)	N/A

†† Incorporated in initial issue of illustrated parts catalogue
 N.A. Mod./Amend. not applicable to this illustrated parts catalogue
 C. Modification/Amendment cancelled
 (A) Amendment
 (M) Modification

MODIFICATION AND AMENDMENT SHEET
(Airframe)

Mod. No.	A.L. No.	Mod. No.	A.L. No.	Mod. No.	A.L. No.	Mod. No.	A.L. No.	Mod. No.	A.L. No.	Mod. No.	A.L. No.
960(A)	N/A	1000(A)	N/A	1040(M)	N/A	1080(A)	N/A	1120(A)	N/A	1160(M)	††
961(A)	N/A	1001(M)	N/A	1041(M)	††	1081(A)	N/A	1121(A)	N/A	1161(M)	N/A
962(A)	N/A	1002(M)	††	1042(M)	C	1082(A)	N/A	1122(A)	N/A	1162(M)	††
963(A)	N/A	1003(M)	N/A	1043(M)	N/A	1083(A)	N/A	1123(A)	N/A	1163(M)	N/A
964(A)	N/A	1004(M)	N/A	1044(M)	††	1084(A)	N/A	1124(A)	N/A	1164(M)	††
965(A)	N/A	1005(M)	††	1045(M)	††	1085(A)	N/A	1125(A)	N/A	1165(M)	††
966(A)	N/A	1006(M)	C	1046(M)	††	1086(A)	N/A	1126(A)	N/A	1166(M)	C
967(A)	N/A	1007(M)	N/A	1047(M)	N/A	1087(A)	N/A	1127(A)	N/A	1167(M)	††
968(A)	N/A	1008(M)	††	1048(M)	††	1088(A)	N/A	1128(A)	N/A	1168(M)	††
969(A)	N/A	1009(M)	N/A	1049(M)	††	1089(A)	N/A	1129(A)	N/A	1169(M)	N/A
970(A)	N/A	1010(M)	††	1050(M)	††	1090(A)	N/A	1130(A)	N/A	1170(M)	††
971(A)	N/A	1011(M)	††	1051(A)	N/A	1091(A)	N/A	1131(A)	N/A	1171(M)	††
972(A)	N/A	1012(M)	††	1052(A)	N/A	1092(A)	N/A	1132(A)	N/A	1172(M)	C
973(A)	N/A	1013(M)	††	1053(A)	N/A	1093(A)	N/A	1133(A)	N/A	1173(M)	N/A
974(A)	N/A	1014(M)	N/A	1054(A)	N/A	1094(A)	N/A	1134(A)	N/A	1174(M)	††
975(A)	N/A	1015(M)	††	1055(A)	N/A	1095(A)	N/A	1135(A)	N/A	1175(M)	††
976(A)	N/A	1016(M)	N/A	1056(A)	N/A	1096(A)	N/A	1136(A)	N/A	1176(M)	††
977(A)	N/A	1017(M)	††	1057(A)	N/A	1097(A)	N/A	1137(A)	N/A	1177(M)	N/A
978(A)	N/A	1018(M)	N/A	1058(A)	N/A	1098(A)	N/A	1138(A)	N/A	1178(M)	N/A
979(A)	N/A	1019(M)	N/A	1059(A)	N/A	1099(A)	N/A	1139(A)	N/A	1179(M)	N/A
980(A)	N/A	1020(M)	N/A	1060(A)	N/A	1100(A)	N/A	1140(A)	N/A	1180(M)	N/A
981(A)	N/A	1021(M)	††	1061(A)	N/A	1101(A)	N/A	1141(A)	N/A	1181(M)	N/A
982(A)	N/A	1022(M)	††	1062(A)	N/A	1102(A)	N/A	1142(A)	N/A	1182(M)	N/A
983(A)	N/A	1023(M)	††	1063(A)	N/A	1103(A)	N/A	1143(A)	N/A	1183(M)	N/A
984(A)	N/A	1024(M)	††	1064(A)	N/A	1104(A)	N/A	1144(A)	N/A	1184(M)	N/A
985(A)	N/A	1025(M)	N/A	1065(A)	N/A	1105(A)	N/A	1145(A)	N/A	1185(M)	N/A
986(A)	N/A	1026(M)	††	1066(A)	N/A	1106(A)	N/A	1146(A)	N/A	1186(M)	N/A
987(A)	N/A	1027(M)	††	1067(A)	N/A	1107(A)	N/A	1147(A)	N/A	1187(M)	N/A
988(A)	N/A	1028(M)	††	1068(A)	N/A	1108(A)	N/A	1148(A)	N/A	1188(M)	N/A
989(A)	N/A	1029(M)	††	1069(A)	N/A	1109(A)	N/A	1149(A)	N/A	1189(M)	††
990(A)	N/A	1030(M)	N/A	1070(A)	N/A	1110(A)	N/A	1150(A)	N/A	1190(M)	N/A
991(A)	N/A	1031(M)	N/A	1071(A)	N/A	1111(A)	N/A	1151(M)	††	1191(M)	N/A
992(A)	N/A	1032(M)	N/A	1072(A)	N/A	1112(A)	N/A	1152(M)	††	1192(M)	N/A
993(A)	N/A	1033(M)	††	1073(A)	N/A	1113(A)	N/A	1153(M)	N/A	1193(M)	N/A
994(A)	N/A	1034(M)	††	1074(A)	N/A	1114(A)	N/A	1154(M)	C	1194(M)	C
995(A)	N/A	1035(M)	C	1075(A)	N/A	1115(A)	N/A	1155(M)	††	1195(M)	††
996(A)	N/A	1036(M)	††	1076(A)	N/A	1116(A)	N/A	1156(M)	††	1196(M)	††
997(A)	N/A	1037(M)	C	1077(A)	N/A	1117(A)	N/A	1157(M)	††	1197(M)	N/A
998(A)	N/A	1038(M)	††	1078(A)	N/A	1118(A)	N/A	1158(M)	N/A	1198(M)	††
999(A)	N/A	1039(M)	N/A	1079(A)	N/A	1119(A)	N/A	1159(M)	††	1199(M)	N/A

†† Incorporated in initial issue of illustrated parts catalogue
 N.A. Mod./Amend. not applicable to this illustrated parts catalogue
 C. Modification/Amendment cancelled
 (A) Amendment
 (M) Modification

MODIFICATION AND AMENDMENT SHEET
 (Airframe)

Mod. No.	A.L. No.	Mod. No.	A.L. No.	Mod. No.	A.L. No.	Mod. No.	A.L. No.	Mod. No.	A.L. No.	Mod. No.	A.L. No.
1200(M)	††	1240(A)	N/A	1280(M)	N/A	1320(A)	N/A	1360(A)	N/A	1400(A)	N/A
1201(A)	N/A	1241(A)	N/A	1281(M)	††	1321(A)	N/A	1361(A)	N/A	1401(M)	N/A
1202(A)	N/A	1242(A)	N/A	1282(M)	††	1322(A)	N/A	1362(A)	N/A	1402(M)	††
1203(A)	N/A	1243(A)	N/A	1283(M)	††	1323(A)	N/A	1363(A)	N/A	1403(M)	††
1204(A)	N/A	1244(A)	N/A	1284(M)	††	1324(A)	N/A	1364(A)	N/A	1404(M)	††
1205(A)	N/A	1245(A)	N/A	1285(M)	N/A	1325(A)	N/A	1365(A)	N/A	1405(M)	††
1206(A)	N/A	1246(A)	N/A	1286(M)	C	1326(A)	N/A	1366(A)	N/A	1406(M)	N/A
1207(A)	N/A	1247(A)	N/A	1287(M)	††	1327(A)	N/A	1367(A)	N/A	1407(M)	N/A
1208(A)	N/A	1248(A)	N/A	1288(M)	N/A	1328(A)	N/A	1368(A)	N/A	1408(M)	††
1209(A)	N/A	1249(A)	N/A	1289(M)	††	1329(A)	N/A	1369(A)	N/A	1409(M)	N/A
1210(A)	N/A	1250(A)	N/A	1290(M)	N/A	1330(A)	N/A	1370(A)	N/A	1410(M)	N/A
1211(A)	N/A	1251(M)	††	1291(M)	N/A	1331(A)	N/A	1371(A)	N/A	1411(M)	N/A
1212(A)	N/A	1252(M)	N/A	1292(M)	††	1332(A)	N/A	1372(A)	N/A	1412(M)	††
1213(A)	N/A	1253(M)	N/A	1293(M)	††	1333(A)	N/A	1373(A)	N/A	1413(M)	N/A
1214(A)	N/A	1254(M)	††	1294(M)	††	1334(A)	N/A	1374(A)	N/A	1414(M)	C
1215(A)	N/A	1255(M)	N/A	1295(M)	††	1335(A)	N/A	1375(A)	N/A	1415(M)	C
1216(A)	N/A	1256(M)	††	1296(M)	N/A	1336(A)	N/A	1376(A)	N/A	1416(M)	††
1217(A)	N/A	1257(M)	††	1297(M)	N/A	1337(A)	N/A	1377(A)	N/A	1417(M)	C
1218(A)	N/A	1258(M)	††	1298(M)	N/A	1338(A)	N/A	1378(A)	N/A	1418(M)	N/A
1219(A)	N/A	1259(M)	††	1299(M)	N/A	1339(A)	N/A	1379(A)	N/A	1419(M)	N/A
1220(A)	N/A	1260(M)	††	1300(M)	††	1340(A)	N/A	1380(A)	N/A	1420(M)	N/A
1221(A)	N/A	1261(M)	††	1301(A)	N/A	1341(A)	N/A	1381(A)	N/A	1421(M)	††
1222(A)	N/A	1262(M)	N/A	1302(A)	N/A	1342(A)	N/A	1382(A)	N/A	1422(M)	††
1223(A)	N/A	1263(M)	N/A	1303(A)	N/A	1343(A)	N/A	1383(A)	N/A	1423(M)	††
1224(A)	N/A	1264(M)	N/A	1304(A)	N/A	1344(A)	N/A	1384(A)	N/A	1424(M)	††
1225(A)	N/A	1265(M)	††	1305(A)	N/A	1345(A)	N/A	1385(A)	N/A	1425(M)	N/A
1226(A)	N/A	1266(M)	††	1306(A)	N/A	1346(A)	N/A	1386(A)	N/A	1426(M)	††
1227(A)	N/A	1267(M)	N/A	1307(A)	N/A	1347(A)	N/A	1387(A)	N/A	1427(M)	N/A
1228(A)	N/A	1268(M)	††	1308(A)	N/A	1348(A)	N/A	1388(A)	N/A	1428(M)	††
1229(A)	N/A	1269(M)	C	1309(A)	N/A	1349(A)	N/A	1389(A)	N/A	1429(M)	C
1230(A)	N/A	1270(M)	††	1310(A)	N/A	1350(A)	N/A	1390(A)	N/A	1430(M)	N/A
1231(A)	N/A	1271(M)	††	1311(A)	N/A	1351(A)	N/A	1391(A)	N/A	1431(M)	N/A
1232(A)	N/A	1272(M)	N/A	1312(A)	N/A	1352(A)	N/A	1392(A)	N/A	1432(M)	††
1233(A)	N/A	1273(M)	††	1313(A)	N/A	1353(A)	N/A	1393(A)	N/A	1433(M)	††
1234(A)	N/A	1274(M)	††	1314(A)	N/A	1354(A)	N/A	1394(A)	N/A	1434(M)	††
1235(A)	N/A	1275(M)	††	1315(A)	N/A	1355(A)	N/A	1395(A)	N/A	1435(M)	N/A
1236(A)	N/A	1276(M)	††	1316(A)	N/A	1356(A)	N/A	1396(A)	N/A	1436(M)	††
1237(A)	N/A	1277(M)	††	1317(A)	N/A	1357(A)	N/A	1397(A)	N/A	1437(M)	N/A
1238(A)	N/A	1278(M)	N/A	1318(A)	N/A	1358(A)	N/A	1398(A)	N/A	1438(M)	††
1239(A)	N/A	1279(M)	N/A	1319(A)	N/A	1359(A)	N/A	1399(A)	N/A	1439(M)	N/A

†† Incorporated in initial issue of illustrated parts catalogue
 N.A. Mod./Amend. not applicable to this illustrated parts catalogue
 C. Modification/Amendment cancelled
 (A) Amendment
 (M) Modification

MODIFICATION AND AMENDMENT SHEET
(Airframe)

Mod. No.	A.L. No.	Mod. No.	A.L. No.	Mod. No.	A.L. No.	Mod. No.	A.L. No.	Mod. No.	A.L. No.	Mod. No.	A.L. No.
1440(M)	††	1480(M)	N/A	1520(A)	N/A	1560(A)	N/A	1600(A)	N/A	1640(A)	N/A
1441(M)	N/A	1481(M)	N/A	1521(A)	N/A	1561(A)	N/A	1601(A)	N/A	1641(A)	N/A
1442(M)	N/A	1482(M)	††	1522(A)	N/A	1562(A)	N/A	1602(A)	N/A	1642(A)	N/A
1443(M)	N/A	1483(M)	N/A	1523(A)	N/A	1563(A)	N/A	1603(A)	N/A	1643(A)	N/A
1444(M)	N/A	1484(M)	††	1524(A)	N/A	1564(A)	N/A	1604(A)	N/A	1644(A)	N/A
1445(M)	††	1485(M)	N/A	1525(A)	N/A	1565(A)	N/A	1605(A)	N/A	1645(A)	N/A
1446(M)	N/A	1486(M)	††	1526(A)	N/A	1566(A)	N/A	1606(A)	N/A	1646(A)	N/A
1447(M)	††	1487(M)	N/A	1527(A)	N/A	1567(A)	N/A	1607(A)	N/A	1647(A)	N/A
1448(M)	C	1488(M)	††	1528(A)	N/A	1568(A)	N/A	1608(A)	N/A	1648(A)	N/A
1449(M)	N/A	1489(M)	††	1529(A)	N/A	1569(A)	N/A	1609(A)	N/A	1649(A)	N/A
1450(M)	††	1490(M)	N/A	1530(A)	N/A	1570(A)	N/A	1610(A)	N/A	1650(A)	N/A
1451(M)	††	1491(M)	††	1531(A)	N/A	1571(A)	N/A	1611(A)	N/A	1651(A)	N/A
1452(M)	††	1492(M)	C	1532(A)	N/A	1572(A)	N/A	1612(A)	N/A	1652(A)	N/A
1453(M)	††	1493(M)	N/A	1533(A)	N/A	1573(A)	N/A	1613(A)	N/A	1653(A)	N/A
1454(M)	††	1494(M)	N/A	1534(A)	N/A	1574(A)	N/A	1614(A)	N/A	1654(A)	N/A
1455(M)	C	1495(M)	††	1535(A)	N/A	1575(A)	N/A	1615(A)	N/A	1655(A)	N/A
1456(M)	††	1496(M)	††	1536(A)	N/A	1576(A)	N/A	1616(A)	N/A	1656(A)	N/A
1457(M)	N/A	1497(M)	††	1537(A)	N/A	1577(A)	N/A	1617(A)	N/A	1657(A)	N/A
1458(M)	††	1498(M)	††	1538(A)	N/A	1578(A)	N/A	1618(A)	N/A	1658(A)	N/A
1459(M)	††	1499(M)	††	1539(A)	N/A	1579(A)	N/A	1619(A)	N/A	1659(A)	N/A
1460(M)	††	1500(M)	††	1540(A)	N/A	1580(A)	N/A	1620(A)	N/A	1660(A)	N/A
1461(M)	N/A	1501(A)	N/A	1541(A)	N/A	1581(A)	N/A	1621(A)	N/A	1661(A)	N/A
1462(M)	††	1502(A)	N/A	1542(A)	N/A	1582(A)	N/A	1622(A)	N/A	1662(A)	N/A
1463(M)	††	1503(A)	N/A	1543(A)	N/A	1583(A)	N/A	1623(A)	N/A	1663(A)	N/A
1464(M)	††	1504(A)	N/A	1544(A)	N/A	1584(A)	N/A	1624(A)	N/A	1664(A)	N/A
1465(M)	††	1505(A)	N/A	1545(A)	N/A	1585(A)	N/A	1625(A)	N/A	1665(A)	N/A
1466(M)	††	1506(A)	N/A	1546(A)	N/A	1586(A)	N/A	1626(A)	N/A	1666(A)	N/A
1467(M)	C	1507(A)	N/A	1547(A)	N/A	1587(A)	N/A	1627(A)	N/A	1667(A)	N/A
1468(M)	††	1508(A)	N/A	1548(A)	N/A	1588(A)	N/A	1628(A)	N/A	1668(A)	N/A
1469(M)	††	1509(A)	N/A	1549(A)	N/A	1589(A)	N/A	1629(A)	N/A	1669(A)	N/A
1470(M)	N/A	1510(A)	N/A	1550(A)	N/A	1590(A)	N/A	1630(A)	N/A	1670(A)	N/A
1471(M)	N/A	1511(A)	N/A	1551(A)	N/A	1591(A)	N/A	1631(A)	N/A	1671(A)	N/A
1472(M)	††	1512(A)	N/A	1552(A)	N/A	1592(A)	N/A	1632(A)	N/A	1672(A)	N/A
1473(M)	††	1513(A)	N/A	1553(A)	N/A	1593(A)	N/A	1633(A)	N/A	1673(A)	N/A
1474(M)	††	1514(A)	N/A	1554(A)	N/A	1594(A)	N/A	1634(A)	N/A	1674(A)	N/A
1475(M)	N/A	1515(A)	N/A	1555(A)	N/A	1595(A)	N/A	1635(A)	N/A	1675(A)	N/A
1476(M)	††	1516(A)	N/A	1556(A)	N/A	1596(A)	N/A	1636(A)	N/A	1676(A)	N/A
1477(M)	††	1517(A)	N/A	1557(A)	N/A	1597(A)	N/A	1637(A)	N/A	1677(A)	N/A
1478(M)	N/A	1518(A)	N/A	1558(A)	N/A	1598(A)	N/A	1638(A)	N/A	1678(A)	N/A
1479(M)	††	1519(A)	N/A	1559(A)	N/A	1599(A)	N/A	1639(A)	N/A	1679(A)	N/A

†† Incorporated in initial issue of illustrated parts catalogue
 N.A. Mod./Amend. not applicable to this illustrated parts catalogue
 C. Modification/Amendment cancelled
 (A) Amendment
 (M) Modification

MODIFICATION AND AMENDMENT SHEET
(Airframe)

Mod. No.	A.L. No.	Mod. No.	A.L. No.	Mod. No.	A.L. No.	Mod. No.	A.L. No.	Mod. No.	A.L. No.	Mod. No.	A.L. No.
1680(A)	N/A	1720(M)	††	1760(M)	N/A	1800(M)	N/A	1840(A)	N/A	1880(A)	N/A
1681(A)	N/A	1721(M)	††	1761(M)	N/A	1801(A)	N/A	1841(A)	N/A	1881(A)	N/A
1682(A)	N/A	1722(M)	††	1762(M)	N/A	1802(A)	N/A	1842(A)	N/A	1882(A)	N/A
1683(A)	N/A	1723(M)	N/A	1763(M)	N/A	1803(A)	N/A	1843(A)	N/A	1883(A)	N/A
1684(A)	N/A	1724(M)	††	1764(M)	N/A	1804(A)	N/A	1844(A)	N/A	1884(A)	N/A
1685(A)	N/A	1725(M)	N/A	1765(M)	N/A	1805(A)	N/A	1845(A)	N/A	1885(A)	N/A
1686(A)	N/A	1726(M)	††	1766(M)	N/A	1806(A)	N/A	1846(A)	N/A	1886(A)	N/A
1687(A)	N/A	1727(M)	N/A	1767(M)	N/A	1807(A)	N/A	1847(A)	N/A	1887(A)	N/A
1688(A)	N/A	1728(M)	N/A	1768(M)	N/A	1808(A)	N/A	1848(A)	N/A	1888(A)	N/A
1689(A)	N/A	1729(M)	C	1769(M)	††	1809(A)	N/A	1849(A)	N/A	1889(A)	N/A
1690(A)	N/A	1730(M)	††	1770(M)	N/A	1810(A)	N/A	1850(A)	N/A	1890(A)	N/A
1691(A)	N/A	1731(M)	††	1771(M)	††	1811(A)	N/A	1851(A)	N/A	1891(A)	N/A
1692(A)	N/A	1732(M)	††	1772(M)	N/A	1812(A)	N/A	1852(A)	N/A	1892(A)	N/A
1693(A)	N/A	1733(M)	N/A	1773(M)	††	1813(A)	N/A	1853(A)	N/A	1893(A)	N/A
1694(A)	N/A	1734(M)	††	1774(M)	††	1814(A)	N/A	1854(A)	N/A	1894(A)	N/A
1695(A)	N/A	1735(M)	††	1775(M)	N/A	1815(A)	N/A	1855(A)	N/A	1895(A)	N/A
1696(A)	N/A	1736(M)	N/A	1776(M)	N/A	1816(A)	N/A	1856(A)	N/A	1896(A)	N/A
1697(A)	N/A	1737(M)	††	1777(M)	N/A	1817(A)	N/A	1857(A)	N/A	1897(A)	N/A
1698(A)	N/A	1738(M)	††	1778(M)	††	1818(A)	N/A	1858(A)	N/A	1898(A)	N/A
1699(A)	N/A	1739(M)	††	1779(M)	N/A	1819(A)	N/A	1859(A)	N/A	1899(A)	N/A
1700(A)	N/A	1740(M)	††	1780(M)	N/A	1820(A)	N/A	1860(A)	N/A	1900(A)	N/A
1701(M)	††	1741(M)	N/A	1781(M)	††	1821(A)	N/A	1861(A)	N/A	1901(M)	N/A
1702(M)	††	1742(M)	N/A	1782(M)	††	1822(A)	N/A	1862(A)	N/A	1902(M)	N/A
1703(M)	††	1743(M)	N/A	1783(M)	N/A	1823(A)	N/A	1863(A)	N/A	1903(M)	N/A
1704(M)	N/A	1744(M)	N/A	1784(M)	††	1824(A)	N/A	1864(A)	N/A	1904(M)	††
1705(M)	††	1745(M)	N/A	1785(M)	N/A	1825(A)	N/A	1865(A)	N/A	1905(M)	N/A
1706(M)	N/A	1746(M)	C	1786(M)	N/A	1826(A)	N/A	1866(A)	N/A	1906(M)	N/A
1707(M)	††	1747(M)	C	1787(M)	N/A	1827(A)	N/A	1867(A)	N/A	1907(M)	N/A
1708(M)	††	1748(M)	N/A	1788(M)	N/A	1828(A)	N/A	1868(A)	N/A	1908(M)	N/A
1709(M)	††	1749(M)	N/A	1789(M)	N/A	1829(A)	N/A	1869(A)	N/A	1909(M)	††
1710(M)	N/A	1750(M)	††	1790(M)	N/A	1830(A)	N/A	1870(A)	N/A	1910(M)	N/A
1711(M)	N/A	1751(M)	N/A	1791(M)	N/A	1831(A)	N/A	1871(A)	N/A	1911(M)	N/A
1712(M)	††	1752(M)	N/A	1792(M)	N/A	1832(A)	N/A	1872(A)	N/A	1912(M)	††
1713(M)	††	1753(M)	N/A	1793(M)	N/A	1833(A)	N/A	1873(A)	N/A	1913(M)	N/A
1714(M)	††	1754(M)	N/A	1794(M)	N/A	1834(A)	N/A	1874(A)	N/A	1914(M)	C
1715(M)	††	1755(M)	N/A	1795(M)	N/A	1835(A)	N/A	1875(A)	N/A	1915(M)	N/A
1716(M)	††	1756(M)	N/A	1796(M)	N/A	1836(A)	N/A	1876(A)	N/A	1916(M)	N/A
1717(M)	N/A	1757(M)	N/A	1797(M)	N/A	1837(A)	N/A	1877(A)	N/A	1917(M)	N/A
1718(M)	N/A	1758(M)	N/A	1798(M)	N/A	1838(A)	N/A	1878(A)	N/A	1918(M)	††
1719(M)	C	1759(M)	N/A	1799(M)	N/A	1839(A)	N/A	1879(A)	N/A	1919(M)	N/A

†† Incorporated in initial issue of illustrated parts catalogue
 N.A. Mod./Amend. not applicable to this illustrated parts catalogue
 C. Modification/Amendment cancelled
 (A) Amendment
 (M) Modification

MODIFICATION AND AMENDMENT SHEET
(Airframe)

Mod. No.	A.L. No.	Mod. No.	A.L. No.	Mod. No.	A.L. No.	Mod. No.	A.L. No.	Mod. No.	A.L. No.	Mod. No.	A.L. No.
1920(M)	N/A	1960(M)	††	2000(M)	††	2040(A)	N/A	2080(A)	N/A	2120(M)	C
1921(M)	††	1961(M)	N/A	2001(A)	N/A	2041(A)	N/A	2081(A)	N/A	2121(M)	N/A
1922(M)	N/A	1962(M)	N/A	2002(A)	N/A	2042(A)	N/A	2082(A)	N/A	2122(M)	N/A
1923(M)	N/A	1963(M)	N/A	2003(A)	N/A	2043(A)	N/A	2083(A)	N/A	2123(M)	††
1924(M)	N/A	1964(M)	N/A	2004(A)	N/A	2044(A)	N/A	2084(A)	N/A	2124(M)	N/A
1925(M)	N/A	1965(M)	C	2005(A)	N/A	2045(A)	N/A	2085(A)	N/A	2125(M)	††
1926(M)	N/A	1966(M)	N/A	2006(A)	N/A	2046(A)	N/A	2086(A)	N/A	2126(M)	††
1927(M)	N/A	1967(M)	N/A	2007(A)	N/A	2047(A)	N/A	2087(A)	N/A	2127(M)	††
1928(M)	††	1968(M)	N/A	2008(A)	N/A	2048(A)	N/A	2088(A)	N/A	2128(M)	††
1929(M)	††	1969(M)	N/A	2009(A)	N/A	2049(A)	N/A	2089(A)	N/A	2129(M)	††
1930(M)	N/A	1970(M)	N/A	2010(A)	N/A	2050(A)	N/A	2090(A)	N/A	2130(M)	N/A
1931(M)	N/A	1971(M)	N/A	2011(A)	N/A	2051(A)	N/A	2091(A)	N/A	2131(M)	N/A
1932(M)	††	1972(M)	N/A	2012(A)	N/A	2052(A)	N/A	2092(A)	N/A	2132(M)	††
1933(M)	N/A	1973(M)	††	2013(A)	N/A	2053(A)	N/A	2093(A)	N/A	2133(M)	N/A
1934(M)	††	1974(M)	N/A	2014(A)	N/A	2054(A)	N/A	2094(A)	N/A	2134(M)	††
1935(M)	N/A	1975(M)	N/A	2015(A)	N/A	2055(A)	N/A	2095(A)	N/A	2135(M)	N/A
1936(M)	N/A	1976(M)	N/A	2016(A)	N/A	2056(A)	N/A	2096(A)	N/A	2136(M)	N/A
1937(M)	N/A	1977(M)	N/A	2017(A)	N/A	2057(A)	N/A	2097(A)	N/A	2137(M)	N/A
1938(M)	††	1978(M)	N/A	2018(A)	N/A	2058(A)	N/A	2098(A)	N/A	2138(M)	N/A
1939(M)	N/A	1979(M)	N/A	2019(A)	N/A	2059(A)	N/A	2099(A)	N/A	2139(M)	N/A
1940(M)	††	1980(M)	N/A	2020(A)	N/A	2060(A)	N/A	2100(A)	N/A	2140(M)	N/A
1941(M)	N/A	1981(M)	††	2021(A)	N/A	2061(A)	N/A	2101(M)	C	2141(M)	C
1942(M)	N/A	1982(M)	††	2022(A)	N/A	2062(A)	N/A	2102(M)	N/A	2142(M)	N/A
1943(M)	N/A	1983(M)	N/A	2023(A)	N/A	2063(A)	N/A	2103(M)	N/A	2143(M)	N/A
1944(M)	††	1984(M)	N/A	2024(A)	N/A	2064(A)	N/A	2104(M)	N/A	2144(M)	N/A
1945(M)	N/A	1985(M)	††	2025(A)	N/A	2065(A)	N/A	2105(M)	N/A	2145(M)	N/A
1946(M)	N/A	1986(M)	N/A	2026(A)	N/A	2066(A)	N/A	2106(M)	N/A	2146(M)	N/A
1947(M)	N/A	1987(M)	N/A	2027(A)	N/A	2067(A)	N/A	2107(M)	N/A	2147(M)	††
1948(M)	N/A	1988(M)	N/A	2028(A)	N/A	2068(A)	N/A	2108(M)	N/A	2148(M)	††
1949(M)	N/A	1989(M)	N/A	2029(A)	N/A	2069(A)	N/A	2109(M)	N/A	2149(M)	N/A
1950(M)	N/A	1990(M)	††	2030(A)	N/A	2070(A)	N/A	2110(M)	††	2150(M)	N/A
1951(M)	N/A	1991(M)	N/A	2031(A)	N/A	2071(A)	N/A	2111(M)	N/A	2151(M)	††
1952(M)	N/A	1992(M)	N/A	2032(A)	N/A	2072(A)	N/A	2112(M)	C	2152(M)	N/A
1953(M)	C	1993(M)	††	2033(A)	N/A	2073(A)	N/A	2113(M)	N/A	2153(M)	N/A
1954(M)	††	1994(M)	C	2034(A)	N/A	2074(A)	N/A	2114(M)	††	2154(M)	††
1955(M)	N/A	1995(M)	††	2035(A)	N/A	2075(A)	N/A	2115(M)	N/A	2155(M)	N/A
1956(M)	N/A	1996(M)	N/A	2036(A)	N/A	2076(A)	N/A	2116(M)	N/A	2156(M)	N/A
1957(M)	N/A	1997(M)	††	2037(A)	N/A	2077(A)	N/A	2117(M)	N/A	2157(M)	N/A
1958(M)	††	1998(M)	C	2038(A)	N/A	2078(A)	N/A	2118(M)	N/A	2158(M)	††
1959(M)	N/A	1999(M)	††	2039(A)	N/A	2079(A)	N/A	2119(M)	N/A	2159(M)	N/A

†† Incorporated in initial issue of illustrated parts catalogue
 N.A. Mod./Amend. not applicable to this illustrated parts catalogue
 C. Modification/Amendment cancelled
 (A) Amendment
 (M) Modification

MODIFICATION AND AMENDMENT SHEET
(Airframe)

Mod. No.	A.L. No.	Mod. No.	A.L. No.	Mod. No.	A.L. No.	Mod. No.	A.L. No.	Mod. No.	A.L. No.	Mod. No.	A.L. No.
2160(M)	N/A	2200(M)	N/A	2240(A)	N/A	2280(A)	N/A	2320(M)	N/A	2360(M)	N/A
2161(M)	N/A	2201(A)	N/A	2241(A)	N/A	2281(A)	N/A	2321(M)	††	2361(M)	††
2162(M)	N/A	2202(A)	N/A	2242(A)	N/A	2282(A)	N/A	2322(M)	N/A	2362(M)	N/A
2163(M)	N/A	2203(A)	N/A	2243(A)	N/A	2283(A)	N/A	2323(M)	††	2363(M)	N/A
2164(M)	N/A	2204(A)	N/A	2244(A)	N/A	2284(A)	N/A	2324(M)	N/A	2364(M)	††
2165(M)	N/A	2205(A)	N/A	2245(A)	N/A	2285(A)	N/A	2325(M)	N/A	2365(M)	N/A
2166(M)	N/A	2206(A)	N/A	2246(A)	N/A	2286(A)	N/A	2326(M)	C	2366(M)	N/A
2167(M)	N/A	2207(A)	N/A	2247(A)	N/A	2287(A)	N/A	2327(M)	N/A	2367(M)	N/A
2168(M)	N/A	2208(A)	N/A	2248(A)	N/A	2288(A)	N/A	2328(M)	N/A	2368(M)	N/A
2169(M)	N/A	2209(A)	N/A	2249(A)	N/A	2289(A)	N/A	2329(M)	N/A	2369(M)	††
2170(M)	N/A	2210(A)	N/A	2250(A)	N/A	2290(A)	N/A	2330(M)	N/A	2370(M)	N/A
2171(M)	N/A	2211(A)	N/A	2251(A)	N/A	2291(A)	N/A	2331(M)	N/A	2371(M)	††
2172(M)	††	2212(A)	N/A	2252(A)	N/A	2292(A)	N/A	2332(M)	N/A	2372(M)	N/A
2173(M)	††	2213(A)	N/A	2253(A)	N/A	2293(A)	N/A	2333(M)	N/A	2373(M)	N/A
2174(M)	N/A	2214(A)	N/A	2254(A)	N/A	2294(A)	N/A	2334(M)	††	2374(M)	N/A
2175(M)	N/A	2215(A)	N/A	2255(A)	N/A	2295(A)	N/A	2335(M)	††	2375(M)	C
2176(M)	N/A	2216(A)	N/A	2256(A)	N/A	2296(A)	N/A	2336(M)	N/A	2376(M)	N/A
2177(M)	N/A	2217(A)	N/A	2257(A)	N/A	2297(A)	N/A	2337(M)	N/A	2377(M)	C
2178(M)	N/A	2218(A)	N/A	2258(A)	N/A	2298(A)	N/A	2338(M)	N/A	2378(M)	N/A
2179(M)	N/A	2219(A)	N/A	2259(A)	N/A	2299(A)	N/A	2339(M)	N/A	2379(M)	††
2180(M)	N/A	2220(A)	N/A	2260(A)	N/A	2300(A)	N/A	2340(M)	††	2380(M)	††
2181(M)	N/A	2221(A)	N/A	2261(A)	N/A	2301(M)	N/A	2341(M)	N/A	2381(M)	C
2182(M)	N/A	2222(A)	N/A	2262(A)	N/A	2302(M)	††	2342(M)	N/A	2382(M)	N/A
2183(M)	††	2223(A)	N/A	2263(A)	N/A	2303(M)	N/A	2343(M)	N/A	2383(M)	N/A
2184(M)	N/A	2224(A)	N/A	2264(A)	N/A	2304(M)	N/A	2344(M)	N/A	2384(M)	N/A
2185(M)	C	2225(A)	N/A	2265(A)	N/A	2305(M)	N/A	2345(M)	N/A	2385(M)	N/A
2186(M)	N/A	2226(A)	N/A	2266(A)	N/A	2306(M)	††	2346(M)	N/A	2386(M)	††
2187(M)	††	2227(A)	N/A	2267(A)	N/A	2307(M)	N/A	2347(M)	N/A	2387(M)	C
2188(M)	N/A	2228(A)	N/A	2268(A)	N/A	2308(M)	††	2348(M)	N/A	2388(M)	N/A
2189(M)	††	2229(A)	N/A	2269(A)	N/A	2309(M)	N/A	2349(M)	C	2389(M)	††
2190(M)	N/A	2230(A)	N/A	2270(A)	N/A	2310(M)	††	2350(M)	N/A	2390(M)	N/A
2191(M)	N/A	2231(A)	N/A	2271(A)	N/A	2311(M)	††	2351(M)	N/A	2391(M)	††
2192(M)	††	2232(A)	N/A	2272(A)	N/A	2312(M)	N/A	2352(M)	C	2392(M)	N/A
2193(M)	N/A	2233(A)	N/A	2273(A)	N/A	2313(M)	N/A	2353(M)	††	2393(M)	N/A
2194(M)	N/A	2234(A)	N/A	2274(A)	N/A	2314(M)	N/A	2354(M)	N/A	2394(M)	††
2195(M)	N/A	2235(A)	N/A	2275(A)	N/A	2315(M)	††	2355(M)	††	2395(M)	††
2196(M)	N/A	2236(A)	N/A	2276(A)	N/A	2316(M)	††	2356(M)	N/A	2396(M)	††
2197(M)	N/A	2237(A)	N/A	2277(A)	N/A	2317(M)	N/A	2357(M)	N/A	2397(M)	N/A
2198(M)	N/A	2238(A)	N/A	2278(A)	N/A	2318(M)	N/A	2358(M)	N/A	2398(M)	††
2199(M)	N/A	2239(A)	N/A	2279(A)	N/A	2319(M)	N/A	2359(M)	††	2399(M)	††

†† Incorporated in initial issue of illustrated parts catalogue
 N.A. Mod./Amend. not applicable to this illustrated parts catalogue
 C. Modification/Amendment cancelled
 (A) Amendment
 (M) Modification

MODIFICATION AND AMENDMENT SHEET
(Airframe)

Mod. No.	A.L. No.	Mod. No.	A.L. No.	Mod. No.	A.L. No.	Mod. No.	A.L. No.	Mod. No.	A.L. No.	Mod. No.	A.L. No.
2400(M)	††	2440(A)	N/A	2480(A)	N/A	2520(M)	N/A	2560(M)	N/A	2600(M)	N/A
2401(A)	N/A	2441(A)	N/A	2481(A)	N/A	2521(M)	N/A	2561(M)	††	2601(M)	N/A
2402(A)	N/A	2442(A)	N/A	2482(A)	N/A	2522(M)	N/A	2562(M)	N/A	2602(M)	N/A
2403(A)	N/A	2443(A)	N/A	2483(A)	N/A	2523(M)	N/A	2563(M)	N/A	2603(M)	N/A
2404(A)	N/A	2444(A)	N/A	2484(A)	N/A	2524(M)	C	2564(M)	††	2604(M)	N/A
2405(A)	N/A	2445(A)	N/A	2485(A)	N/A	2525(M)	††	2565(M)	N/A	2605(M)	††
2406(A)	N/A	2446(A)	N/A	2486(A)	N/A	2526(M)	††	2566(M)	N/A	2606(M)	N/A
2407(A)	N/A	2447(A)	N/A	2487(A)	N/A	2527(M)	††	2567(M)	††	2607(M)	C
2408(A)	N/A	2448(A)	N/A	2488(A)	N/A	2528(M)	N/A	2568(M)	N/A	2608(M)	C
2409(A)	N/A	2449(A)	N/A	2489(A)	N/A	2529(M)	N/A	2569(M)	N/A	2609(M)	N/A
2410(A)	N/A	2450(A)	N/A	2490(A)	N/A	2530(M)	N/A	2570(M)	N/A	2610(M)	C
2411(A)	N/A	2451(A)	N/A	2491(A)	N/A	2531(M)	N/A	2571(M)	N/A	2611(M)	N/A
2412(A)	N/A	2452(A)	N/A	2492(A)	N/A	2532(M)	N/A	2572(M)	††	2612(M)	††
2413(A)	N/A	2453(A)	N/A	2493(A)	N/A	2533(M)	N/A	2573(M)	N/A	2613(M)	N/A
2414(A)	N/A	2454(A)	N/A	2494(A)	N/A	2534(M)	N/A	2574(M)	C	2614(M)	††
2415(A)	N/A	2455(A)	N/A	2495(A)	N/A	2535(M)	††	2575(M)	N/A	2615(M)	††
2416(A)	N/A	2456(A)	N/A	2496(A)	N/A	2536(M)	††	2576(M)	N/A	2616(M)	N/A
2417(A)	N/A	2457(A)	N/A	2497(A)	N/A	2537(M)	††	2577(M)	N/A	2617(M)	N/A
2418(A)	N/A	2458(A)	N/A	2498(A)	N/A	2538(M)	††	2578(M)	††	2618(M)	N/A
2419(A)	N/A	2459(A)	N/A	2499(A)	N/A	2539(M)	N/A	2579(M)	C	2619(M)	††
2420(A)	N/A	2460(A)	N/A	2500(A)	N/A	2540(M)	N/A	2580(M)	N/A	2620(M)	N/A
2421(A)	N/A	2461(A)	N/A	2501(M)	††	2541(M)	††	2581(M)	N/A	2621(M)	N/A
2422(A)	N/A	2462(A)	N/A	2502(M)	††	2542(M)	N/A	2582(M)	N/A	2622(M)	N/A
2423(A)	N/A	2463(A)	N/A	2503(M)	††	2543(M)	C	2583(M)	N/A	2623(M)	N/A
2424(A)	N/A	2464(A)	N/A	2504(M)	N/A	2544(M)	††	2584(M)	††	2624(M)	N/A
2425(A)	N/A	2465(A)	N/A	2505(M)	N/A	2545(M)	††	2585(M)	††	2625(M)	N/A
2426(A)	N/A	2466(A)	N/A	2506(M)	††	2546(M)	N/A	2586(M)	N/A	2626(M)	N/A
2427(A)	N/A	2467(A)	N/A	2507(M)	N/A	2547(M)	N/A	2587(M)	††	2627(M)	††
2428(A)	N/A	2468(A)	N/A	2508(M)	N/A	2548(M)	††	2588(M)	††	2628(M)	N/A
2429(A)	N/A	2469(A)	N/A	2509(M)	C	2549(M)	N/A	2589(M)	N/A	2629(M)	††
2430(A)	N/A	2470(A)	N/A	2510(M)	N/A	2550(M)	N/A	2590(M)	N/A	2630(M)	N/A
2431(A)	N/A	2471(A)	N/A	2511(M)	††	2551(M)	N/A	2591(M)	C	2631(M)	N/A
2432(A)	N/A	2472(A)	N/A	2512(M)	††	2552(M)	N/A	2592(M)	††	2632(M)	N/A
2433(A)	N/A	2473(A)	N/A	2513(M)	N/A	2553(M)	††	2593(M)	††	2633(M)	††
2434(A)	N/A	2474(A)	N/A	2514(M)	N/A	2554(M)	††	2594(M)	††	2634(M)	††
2435(A)	N/A	2475(A)	N/A	2515(M)	N/A	2555(M)	N/A	2595(M)	N/A	2635(M)	C
2436(A)	N/A	2476(A)	N/A	2516(M)	††	2556(M)	N/A	2596(M)	C	2636(M)	C
2437(A)	N/A	2477(A)	N/A	2517(M)	††	2557(M)	N/A	2597(M)	N/A	2637(M)	N/A
2438(A)	N/A	2478(A)	N/A	2518(M)	C	2558(M)	N/A	2598(M)	N/A	2638(M)	N/A
2439(A)	N/A	2479(A)	N/A	2519(M)	N/A	2559(M)	††	2599(M)	††	2639(M)	N/A

†† Incorporated in initial issue of illustrated parts catalogue
 N.A. Mod./Amend. not applicable to this illustrated parts catalogue
 C. Modification/Amendment cancelled
 (A) Amendment
 (M) Modification

MODIFICATION AND AMENDMENT SHEET
(Airframe)

Mod. No.	A.L. No.	Mod. No.	A.L. No.	Mod. No.	A.L. No.	Mod. No.	A.L. No.	Mod. No.	A.L. No.	Mod. No.	A.L. No.
2640(M)	N/A	2680(M)	††	2720(M)	††	2760(A)	N/A	2800(A)	N/A	2840(A)	N/A
2641(M)	N/A	2681(M)	N/A	2721(M)	††	2761(A)	N/A	2801(A)	N/A	2841(A)	N/A
2642(M)	††	2682(M)	N/A	2722(M)	††	2762(A)	N/A	2802(A)	N/A	2842(A)	N/A
2643(M)	††	2683(M)	††	2723(M)	N/A	2763(A)	N/A	2803(A)	N/A	2843(A)	N/A
2644(M)	N/A	2684(M)	N/A	2724(M)	C	2764(A)	N/A	2804(A)	N/A	2844(A)	N/A
2645(M)	N/A	2685(M)	N/A	2725(M)	N/A	2765(A)	N/A	2805(A)	N/A	2845(A)	N/A
2646(M)	N/A	2686(M)	N/A	2726(M)	N/A	2766(A)	N/A	2806(A)	N/A	2846(A)	N/A
2647(M)	††	2687(M)	N/A	2727(M)	N/A	2767(A)	N/A	2807(A)	N/A	2847(A)	N/A
2648(M)	N/A	2688(M)	N/A	2728(M)	N/A	2768(A)	N/A	2808(A)	N/A	2848(A)	N/A
2649(M)	N/A	2689(M)	††	2729(M)	N/A	2769(A)	N/A	2809(A)	N/A	2849(A)	N/A
2650(M)	N/A	2690(M)	††	2730(M)	N/A	2770(A)	N/A	2810(A)	N/A	2850(A)	N/A
2651(M)	N/A	2691(M)	N/A	2731(M)	N/A	2771(A)	N/A	2811(A)	N/A	2851(A)	N/A
2652(M)	N/A	2692(M)	N/A	2732(M)	N/A	2772(A)	N/A	2812(A)	N/A	2852(A)	N/A
2653(M)	††	2693(M)	N/A	2733(M)	N/A	2773(A)	N/A	2813(A)	N/A	2853(A)	N/A
2654(M)	N/A	2694(M)	N/A	2734(M)	N/A	2774(A)	N/A	2814(A)	N/A	2854(A)	N/A
2655(M)	N/A	2695(M)	N/A	2735(M)	N/A	2775(A)	N/A	2815(A)	N/A	2855(A)	N/A
2656(M)	††	2696(M)	N/A	2736(M)	N/A	2776(A)	N/A	2816(A)	N/A	2856(A)	N/A
2657(M)	N/A	2697(M)	N/A	2737(M)	N/A	2777(A)	N/A	2817(A)	N/A	2857(A)	N/A
2658(M)	N/A	2698(M)	N/A	2738(M)	N/A	2778(A)	N/A	2818(A)	N/A	2858(A)	N/A
2659(M)	††	2699(M)	††	2739(M)	N/A	2779(A)	N/A	2819(A)	N/A	2859(A)	N/A
2660(M)	N/A	2700(M)	C	2740(M)	††	2780(A)	N/A	2820(A)	N/A	2860(A)	N/A
2661(M)	N/A	2701(M)	††	2741(M)	N/A	2781(A)	N/A	2821(A)	N/A	2861(A)	N/A
2662(M)	C	2702(M)	N/A	2742(M)	N/A	2782(A)	N/A	2822(A)	N/A	2862(A)	N/A
2663(M)	C	2703(M)	††	2743(M)	N/A	2783(A)	N/A	2823(A)	N/A	2863(A)	N/A
2664(M)	††	2704(M)	††	2744(M)	N/A	2784(A)	N/A	2824(A)	N/A	2864(A)	N/A
2665(M)	N/A	2705(M)	††	2745(M)	C	2785(A)	N/A	2825(A)	N/A	2865(A)	N/A
2666(M)	N/A	2706(M)	N/A	2746(M)	N/A	2786(A)	N/A	2826(A)	N/A	2866(A)	N/A
2667(M)	N/A	2707(M)	N/A	2747(M)	N/A	2787(A)	N/A	2827(A)	N/A	2867(A)	N/A
2668(M)	C	2708(M)	N/A	2748(M)	N/A	2788(A)	N/A	2828(A)	N/A	2868(A)	N/A
2669(M)	C	2709(M)	N/A	2749(M)	C	2789(A)	N/A	2829(A)	N/A	2869(A)	N/A
2670(M)	††	2710(M)	N/A	2750(M)	N/A	2790(A)	N/A	2830(A)	N/A	2870(A)	N/A
2671(M)	N/A	2711(M)	N/A	2751(A)	N/A	2791(A)	N/A	2831(A)	N/A	2871(A)	N/A
2672(M)	N/A	2712(M)	N/A	2752(A)	N/A	2792(A)	N/A	2832(A)	N/A	2872(A)	N/A
2673(M)	N/A	2713(M)	N/A	2753(A)	N/A	2793(A)	N/A	2833(A)	N/A	2873(A)	N/A
2674(M)	N/A	2714(M)	C	2754(A)	N/A	2794(A)	N/A	2834(A)	N/A	2874(A)	N/A
2675(M)	C	2715(M)	N/A	2755(A)	N/A	2795(A)	N/A	2835(A)	N/A	2875(A)	N/A
2676(M)	N/A	2716(M)	C	2756(A)	N/A	2796(A)	N/A	2836(A)	N/A	2876(A)	N/A
2677(M)	††	2717(M)	N/A	2757(A)	N/A	2797(A)	N/A	2837(A)	N/A	2877(A)	N/A
2678(M)	N/A	2718(M)	††	2758(A)	N/A	2798(A)	N/A	2838(A)	N/A	2878(A)	N/A
2679(M)	N/A	2719(M)	N/A	2759(A)	N/A	2799(A)	N/A	2839(A)	N/A	2879(A)	N/A

†† Incorporated in initial issue of illustrated parts catalogue
 N.A. Mod./Amend. not applicable to this illustrated parts catalogue
 C. Modification/Amendment cancelled
 (A) Amendment
 (M) Modification

MODIFICATION AND AMENDMENT SHEET
(Airframe)

Mod. No.	A.L. No.	Mod. No.	A.L. No.	Mod. No.	A.L. No.	Mod. No.	A.L. No.	Mod. No.	A.L. No.	Mod. No.	A.L. No.
2880(A)	N/A	2920(A)	N/A	2960(A)	N/A	3000(A)	N/A	3040(A)	N/A	3080(A)	N/A
2881(A)	N/A	2921(A)	N/A	2961(A)	N/A	3001(A)	N/A	3041(A)	N/A	3081(A)	N/A
2882(A)	N/A	2922(A)	N/A	2962(A)	N/A	3002(A)	N/A	3042(A)	N/A	3082(A)	N/A
2883(A)	N/A	2923(A)	N/A	2963(A)	N/A	3003(A)	N/A	3043(A)	N/A	3083(A)	N/A
2884(A)	N/A	2924(A)	N/A	2964(A)	N/A	3004(A)	N/A	3044(A)	N/A	3084(A)	N/A
2885(A)	N/A	2925(A)	N/A	2965(A)	N/A	3005(A)	N/A	3045(A)	N/A	3085(A)	N/A
2886(A)	N/A	2926(A)	N/A	2966(A)	N/A	3006(A)	N/A	3046(A)	N/A	3086(A)	N/A
2887(A)	N/A	2927(A)	N/A	2967(A)	N/A	3007(A)	N/A	3047(A)	N/A	3087(A)	N/A
2888(A)	N/A	2928(A)	N/A	2968(A)	N/A	3008(A)	N/A	3048(A)	N/A	3088(A)	N/A
2889(A)	N/A	2929(A)	N/A	2969(A)	N/A	3009(A)	N/A	3049(A)	N/A	3089(A)	N/A
2890(A)	N/A	2930(A)	N/A	2970(A)	N/A	3010(A)	N/A	3050(A)	N/A	3090(A)	N/A
2891(A)	N/A	2931(A)	N/A	2971(A)	N/A	3011(A)	N/A	3051(A)	N/A	3091(A)	N/A
2892(A)	N/A	2932(A)	N/A	2972(A)	N/A	3012(A)	N/A	3052(A)	N/A	3092(A)	N/A
2893(A)	N/A	2933(A)	N/A	2973(A)	N/A	3013(A)	N/A	3053(A)	N/A	3093(A)	N/A
2894(A)	N/A	2934(A)	N/A	2974(A)	N/A	3014(A)	N/A	3054(A)	N/A	3094(A)	N/A
2895(A)	N/A	2935(A)	N/A	2975(A)	N/A	3015(A)	N/A	3055(A)	N/A	3095(A)	N/A
2896(A)	N/A	2936(A)	N/A	2976(A)	N/A	3016(A)	N/A	3056(A)	N/A	3096(A)	N/A
2897(A)	N/A	2937(A)	N/A	2977(A)	N/A	3017(A)	N/A	3057(A)	N/A	3097(A)	N/A
2898(A)	N/A	2938(A)	N/A	2978(A)	N/A	3018(A)	N/A	3058(A)	N/A	3098(A)	N/A
2899(A)	N/A	2939(A)	N/A	2979(A)	N/A	3019(A)	N/A	3059(A)	N/A	3099(A)	N/A
2900(A)	N/A	2940(A)	N/A	2980(A)	N/A	3020(A)	N/A	3060(A)	N/A	3100(A)	N/A
2901(A)	N/A	2941(A)	N/A	2981(A)	N/A	3021(A)	N/A	3061(A)	N/A	3101(A)	N/A
2902(A)	N/A	2942(A)	N/A	2982(A)	N/A	3022(A)	N/A	3062(A)	N/A	3102(A)	N/A
2903(A)	N/A	2943(A)	N/A	2983(A)	N/A	3023(A)	N/A	3063(A)	N/A	3103(A)	N/A
2904(A)	N/A	2944(A)	N/A	2984(A)	N/A	3024(A)	N/A	3064(A)	N/A	3104(A)	N/A
2905(A)	N/A	2945(A)	N/A	2985(A)	N/A	3025(A)	N/A	3065(A)	N/A	3105(A)	N/A
2906(A)	N/A	2946(A)	N/A	2986(A)	N/A	3026(A)	N/A	3066(A)	N/A	3106(A)	N/A
2907(A)	N/A	2947(A)	N/A	2987(A)	N/A	3027(A)	N/A	3067(A)	N/A	3107(A)	N/A
2908(A)	N/A	2948(A)	N/A	2988(A)	N/A	3028(A)	N/A	3068(A)	N/A	3108(A)	N/A
2909(A)	N/A	2949(A)	N/A	2989(A)	N/A	3029(A)	N/A	3069(A)	N/A	3109(A)	N/A
2910(A)	N/A	2950(A)	N/A	2990(A)	N/A	3030(A)	N/A	3070(A)	N/A	3110(A)	N/A
2911(A)	N/A	2951(A)	N/A	2991(A)	N/A	3031(A)	N/A	3071(A)	N/A	3111(A)	N/A
2912(A)	N/A	2952(A)	N/A	2992(A)	N/A	3032(A)	N/A	3072(A)	N/A	3112(A)	N/A
2913(A)	N/A	2953(A)	N/A	2993(A)	N/A	3033(A)	N/A	3073(A)	N/A	3113(A)	N/A
2914(A)	N/A	2954(A)	N/A	2994(A)	N/A	3034(A)	N/A	3074(A)	N/A	3114(A)	N/A
2915(A)	N/A	2955(A)	N/A	2995(A)	N/A	3035(A)	N/A	3075(A)	N/A	3115(A)	N/A
2916(A)	N/A	2956(A)	N/A	2996(A)	N/A	3036(A)	N/A	3076(A)	N/A	3116(A)	N/A
2917(A)	N/A	2957(A)	N/A	2997(A)	N/A	3037(A)	N/A	3077(A)	N/A	3117(A)	N/A
2918(A)	N/A	2958(A)	N/A	2998(A)	N/A	3038(A)	N/A	3078(A)	N/A	3118(A)	N/A
2919(A)	N/A	2959(A)	N/A	2999(A)	N/A	3039(A)	N/A	3079(A)	N/A	3119(A)	N/A

†† Incorporated in initial issue of illustrated parts catalogue
 N.A. Mod./Amend. not applicable to this illustrated parts catalogue
 C. Modification/Amendment cancelled
 (A) Amendment
 (M) Modification

MODIFICATION AND AMENDMENT SHEET
(Airframe)

Mod. No.	A.L. No.	Mod. No.	A.L. No.	Mod. No.	A.L. No.	Mod. No.	A.L. No.	Mod. No.	A.L. No.	Mod. No.	A.L. No.
3120(A)	N/A	3160(A)	N/A	3200(M)	N/A	3240(M)	N/A	3280(M)	††	3320(A)	N/A
3121(A)	N/A	3161(A)	N/A	3201(M)	N/A	3241(M)	††	3281(M)	††	3321(A)	N/A
3122(A)	N/A	3162(A)	N/A	3202(M)	N/A	3242(M)	††	3282(M)	††	3322(A)	N/A
3123(A)	N/A	3163(A)	N/A	3203(M)	N/A	3243(M)	N/A	3283(M)	N/A	3323(A)	N/A
3124(A)	N/A	3164(A)	N/A	3204(M)	N/A	3244(M)	††	3284(M)	N/A	3324(A)	N/A
3125(A)	N/A	3165(A)	N/A	3205(M)	N/A	3245(M)	††	3285(M)	N/A	3325(M)	N/A
3126(A)	N/A	3166(A)	N/A	3206(M)	N/A	3246(M)	N/A	3286(M)	N/A	3326(M)	N/A
3127(A)	N/A	3167(A)	N/A	3207(M)	N/A	3247(M)	N/A	3287(M)	N/A	3327(M)	N/A
3128(A)	N/A	3168(A)	N/A	3208(M)	N/A	3248(M)	N/A	3288(M)	N/A	3328(M)	N/A
3129(A)	N/A	3169(A)	N/A	3209(M)	N/A	3249(M)	N/A	3289(M)	N/A	3329(M)	C
3130(A)	N/A	3170(A)	N/A	3210(M)	N/A	3250(M)	N/A	3290(M)	N/A	3330(M)	††
3131(A)	N/A	3171(A)	N/A	3211(M)	††	3251(M)	N/A	3291(M)	N/A	3331(M)	N/A
3132(A)	N/A	3172(A)	N/A	3212(M)	C	3252(M)	††	3292(M)	N/A	3332(M)	N/A
3133(A)	N/A	3173(A)	N/A	3213(M)	N/A	3253(M)	N/A	3293(M)	N/A	3333(M)	††
3134(A)	N/A	3174(A)	N/A	3214(M)	N/A	3254(M)	††	3294(M)	C	3334(A)	N/A
3135(A)	N/A	3175(A)	N/A	3215(A)	N/A	3255(M)	N/A	3295(M)	N/A	3335(A)	N/A
3136(M)	N/A	3176(A)	N/A	3216(A)	N/A	3256(M)	N/A	3296(M)	N/A	3336(A)	N/A
3137(M)	N/A	3177(A)	N/A	3217(A)	N/A	3257(M)	C	3297(M)	N/A	3337(A)	N/A
3138(M)	N/A	3178(A)	N/A	3218(A)	N/A	3258(M)	††	3298(M)	N/A	3338(A)	N/A
3139(M)	N/A	3179(A)	N/A	3219(M)	N/A	3259(M)	C	3299(M)	N/A	3339(A)	N/A
3140(M)	N/A	3180(A)	N/A	3220(M)	C	3260(M)	C	3300(M)	N/A	3340(A)	N/A
3141(M)	N/A	3181(M)	N/A	3221(M)	††	3261(M)	N/A	3301(M)	N/A	3341(A)	N/A
3142(M)	N/A	3182(M)	††	3222(M)	N/A	3262(M)	N/A	3302(M)	††	3342(A)	N/A
3143(M)	N/A	3183(M)	††	3223(M)	††	3263(A)	N/A	3303(A)	N/A	3343(A)	N/A
3144(M)	N/A	3184(M)	C	3224(M)	N/A	3264(A)	N/A	3304(A)	N/A	3344(A)	N/A
3145(M)	N/A	3185(M)	††	3225(M)	††	3265(A)	N/A	3305(A)	N/A	3345(A)	N/A
3146(M)	N/A	3186(M)	N/A	3226(M)	N/A	3266(A)	N/A	3306(A)	N/A	3346(A)	N/A
3147(M)	N/A	3187(M)	††	3227(M)	C	3267(A)	N/A	3307(A)	N/A	3347(A)	N/A
3148(M)	N/A	3188(M)	N/A	3228(M)	N/A	3268(A)	N/A	3308(A)	N/A	3348(A)	N/A
3149(M)	N/A	3189(M)	C	3229(M)	N/A	3269(A)	N/A	3309(A)	N/A	3349(A)	N/A
3150(M)	N/A	3190(M)	C	3230(M)	N/A	3270(A)	N/A	3310(A)	N/A	3350(M)	N/A
3151(M)	N/A	3191(M)	C	3231(M)	N/A	3271(A)	N/A	3311(A)	N/A	3351(M)	N/A
3152(M)	N/A	3192(M)	N/A	3232(M)	N/A	3272(A)	N/A	3312(A)	N/A	3352(M)	N/A
3153(M)	N/A	3193(M)	††	3233(M)	N/A	3273(M)	C	3313(A)	N/A	3353(M)	N/A
3154(M)	N/A	3194(M)	N/A	3234(M)	N/A	3274(M)	††	3314(A)	N/A	3354(M)	N/A
3155(M)	N/A	3195(M)	N/A	3235(M)	††	3275(M)	N/A	3315(A)	N/A	3355(M)	N/A
3156(M)	N/A	3196(M)	N/A	3236(M)	N/A	3276(A)	N/A	3316(A)	N/A	3356(M)	N/A
3157(M)	N/A	3197(M)	††	3237(M)	N/A	3277(A)	N/A	3317(A)	N/A	3357(M)	††
3158(M)	††	3198(M)	N/A	3238(M)	N/A	3278(A)	††	3318(A)	N/A	3358(M)	N/A
3159(M)	M/A	3199(M)	N/A	3239(M)	N/A	3279(M)	N/A	3319(M)	N/A	3359(A)	N/A

†† Incorporated in initial issue of illustrated parts catalogue
 N.A. Mod./Amend. not applicable to this illustrated parts catalogue
 C. Modification/Amendment cancelled
 (A) Amendment
 (M) Modification

MODIFICATION AND AMENDMENT SHEET
(Airframe)

Mod. No.	A.L. No.	Mod. No.	A.L. No.	Mod. No.	A.L. No.	Mod. No.	A.L. No.	Mod. No.	A.L. No.	Mod. No.	A.L. No.
3360(A)	N/A	3400(M)	N/A	3440(M)	N/A	3480(M)	N/A	3520(M)	C	3560(M)	N/A
3361(A)	N/A	3401(M)	N/A	3441(M)	††	3481(M)	N/A	3521(M)	††	3561(M)	N/A
3362(A)	N/A	3402(M)	N/A	3442(M)	††	3482(M)	††	3522(M)	N/A	3562(M)	††
3363(A)	N/A	3403(M)	N/A	3443(M)	N/A	3483(M)	N/A	3523(M)	††	3563(M)	N/A
3364(A)	N/A	3404(M)	N/A	3444(M)	N/A	3484(M)	N/A	3524(M)	N/A	3564(M)	N/A
3365(M)	N/A	3405(A)	N/A	3445(M)	N/A	3485(M)	N/A	3525(M)	N/A	3565(A)	N/A
3366(M)	C	3406(A)	N/A	3446(M)	N/A	3486(M)	N/A	3526(M)	††	3566(A)	N/A
3367(M)	††	3407(A)	N/A	3447(M)	N/A	3487(M)	††	3527(M)	N/A	3567(A)	N/A
3368(M)	††	3408(A)	N/A	3448(M)	N/A	3488(M)	N/A	3528(M)	N/A	3568(A)	N/A
3369(M)	††	3409(A)	N/A	3449(M)	N/A	3489(M)	N/A	3529(M)	N/A	3569(A)	N/A
3370(M)	N/A	3410(A)	N/A	3450(M)	N/A	3490(M)	N/A	3530(M)	N/A	3570(A)	N/A
3371(M)	N/A	3411(A)	N/A	3451(M)	N/A	3491(M)	N/A	3531(M)	C	3571(A)	N/A
3372(M)	N/A	3412(A)	N/A	3452(M)	N/A	3492(M)	N/A	3532(M)	N/A	3572(A)	N/A
3373(M)	N/A	3413(A)	N/A	3453(M)	N/A	3493(M)	C	3533(M)	N/A	3573(A)	N/A
3374(M)	††	3214(A)	N/A	3454(M)	N/A	3494(A)	N/A	3534(M)	N/A	3574(A)	N/A
3375(M)	N/A	3415(A)	N/A	3455(M)	††	3495(A)	N/A	3535(M)	††	3575(A)	N/A
3376(M)	N/A	3416(A)	N/A	3456(M)	N/A	3496(A)	N/A	3536(M)	N/A	3576(A)	N/A
3377(M)	N/A	3417(A)	N/A	3457(M)	N/A	3497(A)	N/A	3537(M)	C	3577(M)	N/A
3378(M)	N/A	3418(A)	N/A	3458(M)	N/A	3498(A)	N/A	3538(M)	N/A	3578(M)	N/A
3379(M)	N/A	3419(A)	N/A	3459(M)	C	3499(A)	N/A	3539(M)	N/A	3579(M)	N/A
3380(M)	N/A	3420(M)	N/A	3460(M)	††	3500(A)	N/A	3540(M)	C	3580(M)	N/A
3381(M)	††	3421(M)	N/A	3461(M)	††	3501(A)	N/A	3541(M)	N/A	3581(M)	N/A
3382(M)	N/A	3422(M)	N/A	3462(M)	N/A	3502(A)	N/A	3542(M)	N/A	3582(M)	C
3383(M)	††	3423(M)	N/A	3463(A)	N/A	3503(A)	N/A	3543(M)	N/A	3583(M)	N/A
3384(M)	N/A	3424(M)	N/A	3464(A)	N/A	3504(M)	N/A	3544(M)	N/A	3584(M)	††
3385(M)	N/A	3425(M)	††	3465(M)	N/A	3505(M)	††	3545(M)	††	3585(M)	††
3386(M)	N/A	3426(M)	N/A	3466(M)	N/A	3506(M)	N/A	3546(M)	N/A	3586(M)	N/A
3387(M)	N/A	3427(M)	N/A	3467(A)	N/A	3507(M)	N/A	3547(A)	N/A	3587(M)	N/A
3388(M)	N/A	3428(M)	N/A	3468(A)	N/A	3508(M)	N/A	3548(A)	N/A	3588(M)	††
3389(M)	N/A	3429(M)	N/A	3469(A)	N/A	3509(M)	N/A	3549(A)	N/A	3589(M)	N/A
3390(M)	N/A	3430(M)	N/A	3470(A)	N/A	3510(M)	N/A	3550(A)	N/A	3590(M)	N/A
3391(M)	††	3431(M)	N/A	3471(A)	N/A	3511(M)	N/A	3551(A)	N/A	3591(M)	N/A
3392(M)	N/A	3432(M)	N/A	3472(A)	N/A	3512(M)	N/A	3552(A)	N/A	3592(M)	N/A
3393(M)	N/A	3433(M)	C	3473(A)	N/A	3513(M)	††	3553(M)	C	3593(M)	††
3394(M)	N/A	3434(M)	C	3474(A)	N/A	3514(M)	N/A	3554(M)	C	3594(M)	N/A
3395(M)	N/A	3435(M)	C	3475(A)	N/A	3515(M)	N/A	3555(M)	N/A	3595(M)	††
3396(M)	N/A	3436(M)	N/A	3476(A)	N/A	3516(M)	N/A	3556(M)	††	3596(M)	N/A
3397(M)	N/A	3437(M)	N/A	3477(M)	C	3517(M)	N/A	3557(M)	††	3597(M)	N/A
3398(M)	N/A	3438(M)	N/A	3478(M)	N/A	3518(M)	N/A	3558(M)	N/A	3598(M)	N/A
3399(M)	C	3439(M)	N/A	3479(M)	N/A	3519(M)	N/A	3559(M)	C	3599(M)	N/A

†† Incorporated in initial issue of illustrated parts catalogue
 N.A. Mod./Amend. not applicable to this illustrated parts catalogue
 C. Modification/Amendment cancelled
 (A) Amendment
 (M) Modification

MODIFICATION AND AMENDMENT SHEET
(Airframe)

Mod. No.	A.L. No.	Mod. No.	A.L. No.	Mod. No.	A.L. No.	Mod. No.	A.L. No.	Mod. No.	A.L. No.	Mod. No.	A.L. No.
3600(M)	N/A	3640(A)	N/A	3680(A)	N/A	3720(A)	N/A	3760(M)	N/A	3800(M)	N/A
3601(A)	N/A	3641(A)	N/A	3681(A)	N/A	3721(A)	N/A	3761(M)	N/A	3801(M)	††
3602(A)	N/A	3642(A)	N/A	3682(A)	N/A	3722(M)	N/A	3762(M)	N/A	3802(M)	C
3603(A)	N/A	3643(A)	N/A	3683(A)	N/A	3723(M)	N/A	3763(M)	††	3803(M)	C
3604(A)	N/A	3644(A)	N/A	3684(A)	N/A	3724(M)	††	3764(M)	N/A	3804(M)	C
3605(A)	N/A	3645(A)	N/A	3685(A)	N/A	3725(M)	N/A	3765(M)	N/A	3805(M)	N/A
3606(A)	N/A	3646(A)	N/A	3686(A)	N/A	3726(M)	††	3766(M)	N/A	3806(M)	††
3607(A)	N/A	3647(A)	N/A	3687(A)	N/A	3727(M)	††	3767(M)	N/A	3807(M)	N/A
3608(A)	N/A	3648(A)	N/A	3688(A)	N/A	3728(M)	N/A	3768(M)	N/A	3808(M)	N/A
3609(A)	N/A	3649(A)	N/A	3689(A)	N/A	3729(M)	N/A	3769(M)	N/A	3809(M)	N/A
3610(A)	N/A	3650(A)	N/A	3690(A)	N/A	3730(M)	††	3770(M)	N/A	3810(M)	C
3611(A)	N/A	3651(A)	N/A	3691(A)	N/A	3731(M)	N/A	3771(M)	††	3811(M)	C
3612(A)	N/A	3652(A)	N/A	3692(A)	N/A	3732(M)	N/A	3772(M)	C	3812(M)	N/A
3613(A)	N/A	3653(A)	N/A	3693(A)	N/A	3733(M)	N/A	3773(M)	††	3813(M)	N/A
3614(A)	N/A	3654(A)	N/A	3694(A)	N/A	3734(M)	N/A	3774(M)	N/A	3814(M)	††
3615(A)	N/A	3655(A)	N/A	3695(A)	N/A	3735(M)	N/A	3775(M)	N/A	3815(M)	N/A
3616(A)	N/A	3656(A)	N/A	3696(A)	N/A	3736(M)	N/A	3776(M)	N/A	3816(M)	N/A
3617(A)	N/A	3657(A)	N/A	3697(A)	N/A	3737(M)	N/A	3777(M)	N/A	3817(M)	N/A
3618(A)	N/A	3658(A)	N/A	3698(A)	N/A	3738(M)	N/A	3778(M)	N/A	3818(M)	N/A
3619(A)	N/A	3659(A)	N/A	3699(A)	N/A	3739(M)	N/A	3779(M)	††	3819(M)	††
3620(A)	N/A	3660(A)	N/A	3700(A)	N/A	3740(M)	N/A	3780(M)	N/A	3820(M)	N/A
3621(A)	N/A	3661(A)	N/A	3701(M)	††	3741(M)	N/A	3781(A)	N/A	3821(M)	††
3622(A)	N/A	3662(A)	N/A	3702(M)	N/A	3742(M)	N/A	3782(A)	N/A	3822(M)	††
3623(A)	N/A	3663(A)	N/A	3703(M)	††	3743(M)	N/A	3783(A)	N/A	3823(M)	N/A
3624(A)	N/A	3664(A)	N/A	3704(M)	N/A	3744(M)	N/A	3784(A)	N/A	3824(A)	N/A
3625(A)	N/A	3665(A)	N/A	3705(M)	N/A	3745(M)	N/A	3785(A)	N/A	3825(A)	N/A
3626(A)	N/A	3666(A)	N/A	3706(M)	††	3746(M)	N/A	3786(A)	N/A	3826(A)	N/A
3627(A)	N/A	3667(A)	N/A	3707(M)	††	3747(M)	N/A	3787(A)	N/A	3827(A)	N/A
3628(A)	N/A	3668(A)	N/A	3708(M)	N/A	3748(M)	C	3788(A)	N/A	3828(A)	N/A
3629(A)	N/A	3669(A)	N/A	3709(M)	N/A	3749(M)	††	3789(A)	N/A	3829(A)	N/A
3630(A)	N/A	3670(A)	N/A	3710(M)	N/A	3750(M)	††	3790(A)	N/A	3830(A)	N/A
3631(A)	N/A	3671(A)	N/A	3711(M)	N/A	3751(A)	N/A	3791(M)	N/A	3831(A)	N/A
3632(A)	N/A	3672(A)	N/A	3712(M)	N/A	3752(A)	N/A	3792(M)	††	3832(M)	N/A
3633(A)	N/A	3673(A)	N/A	3713(M)	N/A	3753(A)	N/A	3793(M)	N/A	3833(M)	N/A
3634(A)	N/A	3674(A)	N/A	3714(M)	N/A	3754(A)	N/A	3794(M)	N/A	3834(M)	N/A
3635(A)	N/A	3675(A)	N/A	3715(M)	††	3755(A)	N/A	3795(M)	C	3835(M)	N/A
3636(A)	N/A	3676(A)	N/A	3716(A)	N/A	3756(A)	N/A	3796(M)	N/A	3836(M)	N/A
3637(A)	N/A	3677(A)	N/A	3717(A)	N/A	3757(M)	N/A	3797(M)	N/A	3837(M)	††
3638(A)	N/A	3678(A)	N/A	3718(A)	N/A	3758(M)	N/A	3798(M)	††	3838(M)	††
3639(A)	N/A	3679(A)	N/A	3719(A)	N/A	3759(M)	††	3799(M)	N/A	3839(M)	N/A

†† Incorporated in initial issue of illustrated parts catalogue
 N.A. Mod./Amend. not applicable to this illustrated parts catalogue
 C. Modification/Amendment cancelled
 (A) Amendment
 (M) Modification

MODIFICATION AND AMENDMENT SHEET
(Airframe)

Mod. No.	A.L. No.	Mod. No.	A.L. No.	Mod. No.	A.L. No.	Mod. No.	A.L. No.	Mod. No.	A.L. No.	Mod. No.	A.L. No.
3840(M)	N/A	3880(M)	N/A	3920(M)	N/A	3960(M)	N/A	4000(M)	N/A	4040(M)	††
3841(M)	N/A	3881(M)	††	3921(M)	N/A	3961(M)	N/A	4001(M)	C	4041(M)	N/A
3842(M)	N/A	3882(M)	N/A	3922(M)	N/A	3962(M)	††	4002(M)	N/A	4042(M)	N/A
3843(M)	††	3883(M)	††	3923(M)	N/A	3963(M)	N/A	4003(M)	††	4043(M)	N/A
3844(M)	N/A	3884(M)	††	3924(M)	N/A	3964(M)	N/A	4004(M)	N/A	4044(M)	††
3845(M)	N/A	3885(A)	N/A	3925(M)	††	3965(M)	N/A	4005(M)	††	4045(M)	N/A
3846(M)	N/A	3886(A)	N/A	3926(M)	N/A	3966(M)	N/A	4006(M)	N/A	4046(M)	N/A
3847(M)	N/A	3887(A)	N/A	3927(M)	N/A	3967(M)	N/A	4007(M)	C	4047(M)	††
3848(M)	C	3888(A)	N/A	3928(M)	N/A	3968(M)	C	4008(M)	N/A	4048(M)	N/A
3849(M)	††	3889(A)	N/A	3929(M)	N/A	3969(M)	N/A	4009(M)	††	4049(M)	N/A
3850(M)	N/A	3890(A)	N/A	3930(M)	N/A	3970(M)	††	4010(M)	N/A	4050(M)	N/A
3851(M)	N/A	3891(A)	N/A	3931(M)	N/A	3971(M)	††	4011(M)	††	4051(M)	N/A
3852(M)	N/A	3892(A)	N/A	3932(M)	N/A	3972(M)	C	4012(M)	N/A	4052(M)	N/A
3853(M)	††	3893(A)	N/A	3933(M)	N/A	3973(M)	N/A	4013(M)	N/A	4053(M)	N/A
3854(M)	N/A	3894(A)	N/A	3934(M)	N/A	3974(M)	N/A	4014(M)	C	4054(M)	††
3855(M)	N/A	3895(M)	N/A	3935(M)	N/A	3975(M)	N/A	4015(M)	N/A	4055(M)	N/A
3856(M)	N/A	3896(M)	N/A	3936(M)	††	3976(M)	N/A	4016(M)	N/A	4056(M)	N/A
3857(M)	N/A	3897(M)	N/A	3937(M)	N/A	3977(M)	C	4017(M)	N/A	4057(M)	N/A
3858(M)	N/A	3898(M)	N/A	3938(A)	N/A	3978(A)	N/A	4018(M)		4058(M)	N/A
3859(M)	N/A	3899(M)	N/A	3939(A)	N/A	3979(A)	N/A	4019(M)	N/A	4059(M)	N/A
3860(M)	N/A	3900(M)	††	3940(A)	N/A	3980(A)	N/A	4020(M)	N/A	4060(M)	N/A
3861(A)	N/A	3901(M)	N/A	3941(A)	N/A	3981(A)	N/A	4021(M)	N/A	4061(M)	††
3862(A)	N/A	3902(M)	N/A	3942(A)	N/A	3982(A)	N/A	4022(A)	N/A	4062(M)	N/A
3863(A)	N/A	3903(M)	††	3943(A)	N/A	3983(A)	N/A	4023(A)	N/A	4063(M)	††
3864(A)	N/A	3904(M)	C	3944(M)	††	3984(A)	N/A	4024(A)	N/A	4064(M)	N/A
3865(A)	N/A	3905(M)	N/A	3945(M)	N/A	3985(A)	N/A	4025(A)	N/A	4065(M)	N/A
3866(A)	N/A	3906(M)	††	3946(M)	N/A	3986(M)	C	4026(A)	N/A	4066(M)	N/A
3867(A)	N/A	3907(M)	N/A	3947(M)	N/A	3987(M)	N/A	4027(A)	N/A	4067(M)	N/A
3868(A)	N/A	3908(M)	N/A	3948(M)	††	3988(M)	N/A	4028(A)	N/A	4068(M)	C
3869(M)	N/A	3909(M)	††	3949(M)	††	3989(M)	N/A	4029(A)	N/A	4069(M)	††
3870(M)	N/A	3910(M)	††	3950(M)	C	3990(M)	C	4030(A)	N/A	4070(M)	C
3871(M)	N/A	3911(M)	††	3951(M)	N/A	3991(M)	C	4031(A)	N/A	4071(M)	††
3872(M)	N/A	3912(M)	N/A	3952(M)	††	3992(M)	N/A	4032(M)	N/A	4072(M)	N/A
3873(M)	††	3913(M)	C	3953(M)	††	3993(M)	N/A	4033(M)	N/A	4073(M)	††
3874(M)	C	3914(M)	N/A	3954(M)	N/A	3994(M)	N/A	4034(M)	N/A	4074(M)	C
3875(M)	N/A	3915(M)	N/A	3955(M)	††	3995(M)	C	4035(M)	N/A	4075(M)	N/A
3876(M)	N/A	3916(M)	N/A	3956(M)	N/A	3996(M)	N/A	4036(M)	N/A	4076(M)	N/A
3877(M)	N/A	3917(M)	N/A	3957(M)	N/A	3997(M)	N/A	4037(M)	N/A	4077(M)	††
3878(M)	N/A	3918(M)	N/A	3958(M)	N/A	3998(M)	N/A	4038(M)	N/A	4078(M)	††
3879(M)	N/A	3919(M)	N/A	3959(M)	N/A	3999(M)	N/A	4039(M)	N/A	4079(M)	N/A

†† Incorporated in initial issue of illustrated parts catalogue
 N.A. Mod./Amend. not applicable to this illustrated parts catalogue
 C. Modification/Amendment cancelled
 (A) Amendment
 (M) Modification

MODIFICATION AND AMENDMENT SHEET
(Airframe)

AP101B-0407-3A

Mod. No.	A.L. No.	Mod. No.	A.L. No.	Mod. No.	A.L. No.	Mod. No.	A.L. No.	Mod. No.	A.L. No.	Mod. No.	A.L. No.
4080(M)	††	4120(A)	N/A	4160(M)	††	4200(A)	N/A	4240(A)	N/A	4280(M)	††
4081(M)	††	4121(A)	N/A	4161(M)	C	4201(A)	N/A	4241(A)	N/A	4281(M)	N/A
4082(A)	N/A	4122(A)	N/A	4162(M)	N/A	4202(A)	N/A	4242(A)	N/A	4282(M)	††
4083(A)	N/A	4123(M)	N/A	4163(M)	N/A	4203(A)	N/A	4243(A)	N/A	4283(M)	N/A
4084(A)	N/A	4124(M)	N/A	4164(M)	N/A	4204(A)	N/A	4244(A)	N/A	4284(M)	N/A
4085(A)	N/A	4125(M)	N/A	4165(M)	C	4205(A)	N/A	4245(A)	N/A	4285(M)	N/A
4086(A)	N/A	4126(M)	N/A	4166(M)	N/A	4206(A)	N/A	4246(A)	N/A	4286(M)	††
4087(A)	N/A	4127(M)	N/A	4167(M)	N/A	4207(A)	N/A	4247(A)	N/A	4287(M)	††
4088(A)	N/A	4128(M)	N/A	4168(M)	N/A	4208(A)	N/A	4248(A)	N/A	4288(M)	N/A
4089(A)	N/A	4129(M)	N/A	4169(M)	N/A	4209(A)	N/A	4249(A)	N/A	4289(M)	††
4090(M)	N/A	4130(M)	N/A	4170(A)	N/A	4210(A)	N/A	4250(A)	N/A	4290(M)	C
4091(M)	N/A	4131(M)	N/A	4171(A)	N/A	4211(A)	N/A	4251(A)	N/A	4291(M)	N/A
4092(M)	N/A	4132(M)	N/A	4172(A)	N/A	4212(A)	N/A	4252(A)	N/A	4292(M)	N/A
4093(M)	C	4133(M)	N/A	4173(A)	N/A	4213(A)	N/A	4253(A)	N/A	4293(M)	N/A
4094(M)	N/A	4134(M)	N/A	4174(A)	N/A	4214(A)	N/A	4254(A)	N/A	4294(M)	††
4095(M)	††	4135(M)	N/A	4175(A)	N/A	4215(A)	N/A	4255(A)	N/A	4295(M)	N/A
4096(M)	††	4136(M)	N/A	4176(A)	N/A	4216(A)	N/A	4256(A)	N/A	4296(M)	N/A
4097(M)	††	4137(M)	N/A	4177(A)	N/A	4217(A)	N/A	4257(A)	N/A	4297(M)	††
4098(M)	N/A	4138(M)	N/A	4178(A)	N/A	4218(A)	N/A	4258(A)	N/A	4298(M)	N/A
4099(M)	N/A	4139(M)	N/A	4179(A)	N/A	4219(A)	N/A	4259(A)	N/A	4299(M)	N/A
4100(M)	N/A	4140(M)	N/A	4180(A)	N/A	4220(M)	N/A	4260(A)	N/A	4300(M)	N/A
4101(M)	C	4141(A)	N/A	4181(A)	N/A	4221(M)	C	4261(A)	N/A	4301(M)	††
4102(M)	N/A	4142(A)	N/A	4182(A)	N/A	4222(M)	N/A	4262(A)	N/A	4302(M)	N/A
4103(M)	††	4143(A)	N/A	4183(A)	N/A	4223(M)	††	4263(A)	N/A	4303(M)	††
4104(M)	N/A	4144(A)	N/A	4184(A)	N/A	4224(M)	N/A	4264(A)	N/A	4304(M)	C
4105(M)	N/A	4145(A)	N/A	4185(A)	N/A	4225(M)	N/A	4265(M)	N/A	4305(M)	C
4106(M)	N/A	4146(A)	N/A	4186(A)	N/A	4226(M)	N/A	4266(M)	N/A	4306(M)	N/A
4107(M)	††	4147(A)	N/A	4187(A)	N/A	4227(M)	N/A	4267(M)	N/A	4307(M)	N/A
4108(M)	C	4148(A)	N/A	4188(A)	N/A	4228(M)	N/A	4268(M)	C	4308(M)	††
4109(M)	N/A	4149(A)	N/A	4189(A)	N/A	4229(M)	N/A	4269(M)	N/A	4309(M)	N/A
4110(M)	N/A	4150(A)	N/A	4190(A)	N/A	4230(M)	N/A	4270(M)	††	4310(M)	N/A
4111(M)	N/A	4151(M)	††	4191(A)	N/A	4231(M)	N/A	4271(M)	††	4311(M)	C
4112(M)	††	4152(M)	††	4192(A)	N/A	4232(M)	N/A	4272(M)	N/A	4312(M)	N/A
4113(A)	N/A	4153(M)	C	4193(A)	N/A	4233(M)	††	4273(M)	N/A	4313(M)	N/A
4114(A)	N/A	4154(M)	N/A	4194(A)	N/A	4234(M)	N/A	4274(M)	N/A	4314(M)	C
4115(A)	N/A	4155(M)	N/A	4195(A)	N/A	4235(M)	N/A	4275(M)	N/A	4315(M)	N/A
4116(A)	N/A	4156(M)	C	4196(A)	N/A	4236(M)	N/A	4276(M)	††	4316(M)	N/A
4117(A)	N/A	4157(M)	N/A	4197(A)	N/A	4237(M)	C	4277(M)	††	4317(M)	N/A
4118(A)	N/A	4158(M)	N/A	4198(A)	N/A	4238(M)	C	4278(M)	††	4318(M)	C
4119(A)	N/A	4159(M)	N/A	4199(A)	N/A	4239(M)	††	4279(M)	N/A	4319(M)	N/A

†† Incorporated in initial issue of illustrated parts catalogue
 N.A. Mod./Amend. not applicable to this illustrated parts catalogue
 C. Modification/Amendment cancelled
 (A) Amendment
 (M) Modification

MODIFICATION AND AMENDMENT SHEET
(Airframe)

Mod. No.	A.L. No.	Mod. No.	A.L. No.	Mod. No.	A.L. No.	Mod. No.	A.L. No.	Mod. No.	A.L. No.	Mod. No.	A.L. No.
4320(M)	N/A	4360(M)	N/A	4400(A)	N/A	4440(M)	N/A	4480(M)	C	4520(A)	N/A
4321(M)	C	4361(A)	N/A	4401(A)	N/A	4441(M)	C	4481(M)	††	4521(A)	N/A
4322(M)	C	4362(A)	N/A	4402(A)	N/A	4442(M)	N/A	4482(M)	N/A	4522(A)	N/A
4323(M)	N/A	4363(A)	N/A	4403(A)	N/A	4443(M)	††	4483(M)	N/A	4523(A)	N/A
4324(M)	C	4364(A)	N/A	4404(A)	N/A	4444(M)	N/A	4484(M)	C	4524(A)	N/A
4325(M)	N/A	4365(A)	N/A	4405(A)	N/A	4445(M)	N/A	4485(M)	N/A	4525(A)	N/A
4326(M)	N/A	4366(A)	N/A	4406(A)	N/A	4446(M)	N/A	4486(M)	N/A	4526(A)	N/A
4327(M)	N/A	4367(A)	N/A	4407(A)	N/A	4447(M)	N/A	4487(M)	N/A	4527(A)	N/A
4328(M)	C	4368(A)	N/A	4408(A)	N/A	4448(M)	††	4488(M)	N/A	4528(A)	N/A
4329(M)	N/A	4369(A)	N/A	4409(A)	N/A	4449(M)	††	4489(M)	††	4529(A)	N/A
4330(M)	N/A	4370(A)	N/A	4410(A)	N/A	4450(M)	N/A	4490(M)	N/A	4530(A)	N/A
4331(M)	N/A	4371(A)	N/A	4411(M)	N/A	4451(M)	††	4491(M)	N/A	4531(A)	N/A
4332(M)	N/A	4372(A)	N/A	4412(M)	††	4452(M)	N/A	4492(M)	N/A	4532(A)	N/A
4333(M)	††	4373(A)	N/A	4413(M)	C	4453(M)	N/A	4493(M)	N/A	4533(A)	N/A
4334(M)	C	4374(A)	N/A	4414(M)	C	4454(M)	††	4494(M)	N/A	4534(A)	N/A
4335(M)	††	4375(A)	N/A	4415(M)	N/A	4455(M)	N/A	4495(M)	N/A	4535(A)	N/A
4336(M)	N/A	4376(A)	N/A	4416(M)	N/A	4456(M)	N/A	4496(M)	N/A	4536(A)	N/A
4337(M)	N/A	4377(A)	N/A	4417(M)	N/A	4457(M)	N/A	4497(M)	N/A	4537(A)	N/A
4338(M)	N/A	4378(A)	N/A	4418(M)	N/A	4458(M)	N/A	4498(M)	N/A	4538(A)	N/A
4339(M)	N/A	4379(A)	N/A	4419(M)	N/A	4459(M)	N/A	4499(M)	N/A	4539(A)	N/A
4340(M)	N/A	4380(A)	N/A	4420(M)	††	4460(M)	N/A	4500(M)	N/A	4540(A)	N/A
4341(M)	N/A	4381(A)	N/A	4421(M)	N/A	4461(M)	N/A	4501(A)	N/A	4541(A)	N/A
4342(M)	N/A	4382(A)	N/A	4422(M)	N/A	4462(M)	N/A	4502(A)	N/A	4542(A)	N/A
4343(M)	N/A	4383(A)	N/A	4423(M)	N/A	4463(M)	N/A	4503(A)	N/A	4543(A)	N/A
4344(M)	N/A	4384(A)	N/A	4424(M)	N/A	4464(M)	N/A	4504(A)	N/A	4544(A)	N/A
4345(M)	N/A	4385(A)	N/A	4425(M)	N/A	4465(M)	††	4505(A)	N/A	4545(A)	N/A
4346(M)	N/A	4386(A)	N/A	4426(M)	N/A	4466(M)	N/A	4506(A)	N/A	4546(A)	N/A
4347(M)	N/A	4387(A)	N/A	4427(M)	††	4467(M)	C	4507(A)	N/A	4547(A)	N/A
4348(M)	N/A	4388(A)	N/A	4428(M)	N/A	4468(M)	††	4508(A)	N/A	4548(A)	N/A
4349(M)	C	4389(A)	N/A	4429(M)	N/A	4469(M)	N/A	4509(A)	N/A	4549(A)	N/A
4350(M)	N/A	4390(A)	N/A	4430(M)	N/A	4470(M)	N/A	4510(A)	N/A	4550(A)	N/A
4351(M)	††	4391(A)	N/A	4431(M)	N/A	4471(M)	N/A	4511(A)	N/A	4551(A)	N/A
4352(M)	C	4392(A)	N/A	4432(M)	N/A	4472(M)	N/A	4512(A)	N/A	4552(A)	N/A
4353(M)	N/A	4393(A)	N/A	4433(M)	N/A	4473(M)	N/A	4513(A)	N/A	4553(A)	N/A
4354(M)	††	4394(A)	N/A	4434(M)	N/A	4474(M)	N/A	4514(A)	N/A	4554(A)	N/A
4355(M)	N/A	4395(A)	N/A	4435(M)	††	4475(M)	N/A	4515(A)	N/A	4555(A)	N/A
4356(M)	††	4396(A)	N/A	4436(M)	††	4476(M)	N/A	4516(A)	N/A	4556(A)	N/A
4357(M)	N/A	4397(A)	N/A	4437(M)	N/A	4477(M)	††	4517(A)	N/A	4557(A)	N/A
4358(M)	N/A	4398(A)	N/A	4438(M)	N/A	4478(M)	††	4518(A)	N/A	4558(A)	N/A
4359(M)	N/A	4399(A)	N/A	4439(M)	N/A	4479(M)	N/A	4519(A)	N/A	4559(A)	N/A

†† Incorporated in initial issue of illustrated parts catalogue
 N.A. Mod./Amend. not applicable to this illustrated parts catalogue
 C. Modification/Amendment cancelled
 (A) Amendment
 (M) Modification

**MODIFICATION AND AMENDMENT SHEET
(Airframe)**

Mod. No.	A.L. No.	Mod. No.	A.L. No.	Mod. No.	A.L. No.	Mod. No.	A.L. No.	Mod. No.	A.L. No.	Mod. No.	A.L. No.
4560(A)	N/A	4600(A)	N/A	4640(A)	N/A	4680(A)	N/A	4720(M)	††	4760(A)	N/A
4561(A)	N/A	4601(A)	N/A	4641(A)	N/A	4681(A)	N/A	4721(M)	N/A	4761(A)	N/A
4562(A)	N/A	4602(A)	N/A	4642(A)	N/A	4682(A)	N/A	4722(M)	N/A	4762(A)	N/A
4563(A)	N/A	4603(A)	N/A	4643(A)	N/A	4683(A)	N/A	4723(M)	N/A	4763(A)	N/A
4564(A)	N/A	4604(A)	N/A	4644(A)	N/A	4684(A)	N/A	4724(M)	††	4764(A)	N/A
4565(A)	N/A	4605(A)	N/A	4645(A)	N/A	4685(A)	N/A	4725(M)	N/A	4765(A)	N/A
4566(A)	N/A	4606(A)	N/A	4646(A)	N/A	4686(A)	N/A	4726(M)	N/A	4766(A)	5
4567(A)	N/A	4607(A)	N/A	4647(A)	N/A	4687(A)	N/A	4727(M)	N/A	4767(A)	N/A
4568(A)	N/A	4608(A)	N/A	4648(A)	N/A	4688(A)	N/A	4728(A)	N/A	4768(A)	N/A
4569(A)	N/A	4609(A)	N/A	4649(A)	N/A	4689(A)	N/A	4729(A)	N/A	4769(A)	6
4570(A)	N/A	4610(A)	N/A	4650(A)	N/A	4690(A)	N/A	4730(A)	N/A	4770(A)	N/A
4571(A)	N/A	4611(A)	N/A	4651(A)	N/A	4691(A)	N/A	4731(A)	N/A	4771(A)	N/A
4572(A)	N/A	4612(A)	N/A	4652(A)	N/A	4692(A)	N/A	4732(A)	N/A	4772(A)	N/A
4573(A)	N/A	4613(A)	N/A	4653(A)	N/A	4693(A)	N/A	4733(A)	N/A	4773(A)	6
4574(A)	N/A	4614(A)	N/A	4654(A)	N/A	4694(A)	N/A	4734(A)	N/A	4774(A)	N/A
4575(A)	N/A	4615(A)	N/A	4655(A)	N/A	4695(A)	N/A	4735(A)	N/A	4775(A)	N/A
4576(A)	N/A	4616(A)	N/A	4656(A)	N/A	4696(A)	N/A	4736(A)	N/A	4776(A)	N/A
4577(A)	N/A	4617(A)	N/A	4657(A)	N/A	4697(A)	N/A	4737(A)	N/A	4777(A)	N/A
4578(A)	N/A	4618(A)	N/A	4658(A)	N/A	4698(A)	N/A	4738(A)	N/A	4778(A)	N/A
4579(A)	N/A	4619(A)	N/A	4659(A)	N/A	4699(A)	N/A	4739(A)	N/A	4779(A)	N/A
4580(A)	N/A	4620(A)	N/A	4660(A)	N/A	4700(A)	N/A	4740(A)	N/A	4780(A)	N/A
4581(A)	N/A	4621(A)	N/A	4661(A)	N/A	4701(M)	N/A	4741(A)	N/A	4781(M)	††
4582(A)	N/A	4622(A)	N/A	4662(A)	N/A	4702(M)	N/A	4742(A)	N/A	4782(M)	C
4583(A)	N/A	4623(A)	N/A	4663(A)	N/A	4703(M)	N/A	4743(A)	N/A	4783(M)	††
4584(A)	N/A	4624(A)	N/A	4664(A)	N/A	4704(M)	N/A	4744(A)	N/A	4784(M)	C
4585(A)	N/A	4625(A)	N/A	4665(A)	N/A	4705(M)	††	4745(A)	N/A	4785(M)	C
4586(A)	N/A	4626(A)	N/A	4666(A)	N/A	4706(M)	N/A	4746(A)	N/A	4786(M)	C
4587(A)	N/A	4627(A)	N/A	4667(A)	N/A	4707(M)	††	4747(A)	N/A	4787(M)	N/A
4588(A)	N/A	4628(A)	N/A	4668(A)	N/A	4708(M)	N/A	4748(A)	N/A	4788(M)	N/A
4589(A)	N/A	4629(A)	N/A	4669(A)	N/A	4709(M)	C	4749(A)	N/A	4789(M)	N/A
4590(A)	N/A	4630(A)	N/A	4670(A)	N/A	4710(M)	N/A	4750(A)	N/A	4790(M)	N/A
4591(A)	N/A	4631(A)	N/A	4671(A)	N/A	4711(M)	N/A	4751(A)	N/A	4791(M)	N/A
4592(A)	N/A	4632(A)	N/A	4672(A)	N/A	4712(M)	N/A	4752(A)	N/A	4792(M)	N/A
4593(A)	N/A	4633(A)	N/A	4673(A)	N/A	4713(M)	N/A	4753(A)	N/A	4793(M)	N/A
4594(A)	N/A	4634(A)	N/A	4674(A)	N/A	4714(M)	††	4754(A)	N/A	4794(M)	N/A
4595(A)	N/A	4635(A)	N/A	4675(A)	N/A	4715(M)	N/A	4755(A)	N/A	4795(M)	N/A
4596(A)	N/A	4636(A)	N/A	4676(A)	N/A	4716(M)	N/A	4756(A)	N/A	4796(M)	C
4597(A)	N/A	4637(A)	N/A	4677(A)	N/A	4717(M)	N/A	4757(A)	4	4797(M)	N/A
4598(A)	N/A	4638(A)	N/A	4678(A)	N/A	4718(M)	N/A	4758(A)	N/A	4798(M)	C
4599(A)	N/A	4639(A)	N/A	4679(A)	N/A	4719(M)	N/A	4759(A)	N/A	4799(M)	N/A

†† Incorporated in initial issue of illustrated parts catalogue
 N.A. Mod./Amend. not applicable to this illustrated parts catalogue
 C. Modification/Amendment cancelled
 (A) Amendment
 (M) Modification

AP101B-0407-3A

MODIFICATION AND AMENDMENT SHEET
(Airframe)

Mod. No.	A.L. No.	Mod. No.	A.L. No.	Mod. No.	A.L. No.	Mod. No.	A.L. No.	Mod. No.	A.L. No.	Mod. No.	A.L. No.
4800(M)	N/A	4840(A)	N/A	4880(A)	N/A	4920(A)	N/A	4960(M)	††	5000(A)	N/A
4801(A)	N/A	4841(A)	N/A	4881(A)	N/A	4921(M)	N/A	4961(M)	N/A	5001(A)	N/A
4802(A)	N/A	4842(A)	N/A	4882(A)	N/A	4922(M)	N/A	4962(M)	††	5002(A)	N/A
4803(A)	N/A	4843(A)	N/A	4883(A)	N/A	4923(M)	N/A	4963(A)	N/A	5003(A)	N/A
4804(A)	N/A	4844(A)	N/A	4884(A)	N/A	4924(M)	N/A	4964(A)	N/A	5004(A)	N/A
4805(A)	N/A	4845(A)	N/A	4885(A)	N/A	4925(M)	††	4965(A)	N/A	5005(A)	N/A
4806(A)	N/A	4846(A)	N/A	4886(A)	N/A	4926(M)	N/A	4966(A)	N/A	5006(A)	N/A
4807(A)	N/A	4847(A)	N/A	4887(A)	N/A	4927(M)	N/A	4967(A)	N/A	5007(A)	N/A
4808(A)	N/A	4848(A)	N/A	4888(A)	N/A	4928(M)	N/A	4968(A)	N/A	5008(A)	N/A
4809(A)	N/A	4849(A)	N/A	4889(A)	N/A	4929(M)	N/A	4969(A)	N/A	5009(A)	N/A
4810(A)	N/A	4850(A)	N/A	4890(A)	N/A	4930(M)	††	4970(A)	N/A	5010(A)	N/A
4811(A)	N/A	4851(M)	N/A	4891(A)	N/A	4931(M)	††	4971(A)	N/A	5011(A)	N/A
4812(A)	N/A	4852(M)	N/A	4892(A)	N/A	4932(M)	N/A	4972(A)	N/A	5012(A)	N/A
4813(A)	N/A	4853(M)	††	4893(A)	N/A	4933(M)	††	4973(A)	N/A	5013(A)	N/A
4814(A)	N/A	4854(M)	N/A	4894(A)	N/A	4934(M)	N/A	4974(A)	N/A	5014(M)	N/A
4815(A)	N/A	4855(M)	††	4895(A)	N/A	4935(M)	N/A	4975(A)	N/A	5015(M)	††
4816(A)	N/A	4856(M)	N/A	4896(A)	N/A	4936(M)	††	4976(A)	N/A	5016(M)	N/A
4817(A)	N/A	4857(M)	N/A	4897(A)	N/A	4937(M)	N/A	4977(A)	N/A	5017(M)	C
4818(A)	N/A	4858(M)	N/A	4898(A)	N/A	4938(M)	N/A	4978(A)	N/A	5018(M)	N/A
4819(A)	N/A	4859(M)	N/A	4899(A)	N/A	4939(M)	N/A	4979(A)	N/A	5019(M)	N/A
4820(A)	N/A	4860(M)	C	4900(A)	N/A	4940(M)	N/A	4980(A)	N/A	5020(M)	N/A
4821(A)	N/A	4861(M)	C	4901(A)	N/A	4941(M)	N/A	4981(A)	N/A	5021(M)	C
4822(A)	N/A	4862(M)	C	4902(A)	N/A	4942(M)	N/A	4982(A)	N/A	5022(M)	††
4823(A)	N/A	4863(M)	N/A	4903(A)	N/A	4943(M)	N/A	4983(A)	N/A	5023(M)	N/A
4824(A)	N/A	4864(M)	N/A	4904(A)	N/A	4944(M)	N/A	4984(A)	N/A	5024(M)	N/A
4825(A)	N/A	4865(M)	N/A	4905(A)	N/A	4945(M)	N/A	4985(A)	N/A	5025(M)	N/A
4826(A)	N/A	4866(M)	N/A	4906(A)	N/A	4946(M)	N/A	4986(A)	N/A	5026(M)	N/A
4827(A)	N/A	4867(M)	N/A	4907(A)	N/A	4947(M)	N/A	4987(A)	N/A	5027(M)	††
4828(A)	N/A	4868(M)	N/A	4908(A)	N/A	4948(M)	N/A	4988(A)	N/A	5028(M)	††
4829(A)	N/A	4869(M)	N/A	4909(A)	N/A	4949(M)	††	4989(A)	N/A	5029(M)	C
4830(A)	N/A	4870(M)	N/A	4910(A)	N/A	4950(M)	N/A	4990(A)	N/A	5030(M)	C
4831(A)	N/A	4871(A)	N/A	4911(A)	N/A	4951(M)	N/A	4991(A)	N/A	5031(M)	N/A
4832(A)	N/A	4872(A)	N/A	4912(A)	N/A	4952(M)	N/A	4992(A)	N/A	5032(M)	††
4833(A)	N/A	4873(A)	N/A	4913(A)	N/A	4953(M)	N/A	4993(A)	N/A	5033(M)	N/A
4834(A)	N/A	4874(A)	N/A	4914(A)	N/A	4954(M)	N/A	4994(A)	N/A	5034(M)	N/A
4835(A)	N/A	4875(A)	N/A	4915(A)	N/A	4955(M)	††	4995(A)	N/A	5035(M)	††
4836(A)	N/A	4876(A)	N/A	4916(A)	N/A	4956(M)	N/A	4996(A)	N/A	5036(M)	N/A
4837(A)	N/A	4877(A)	N/A	4917(A)	N/A	4957(M)	N/A	4997(A)	N/A	5037(M)	N/A
4838(A)	N/A	4878(A)	N/A	4918(A)	N/A	4958(M)	††	4998(A)	N/A	5038(M)	††
4839(A)	N/A	4879(A)	N/A	4919(A)	N/A	4959(M)	††	4999(A)	N/A	5039(M)	N/A

†† Incorporated in initial issue of illustrated parts catalogue
 N.A. Mod./Amend. not applicable to this illustrated parts catalogue
 C. Modification/Amendment cancelled
 (A) Amendment
 (M) Modification

**MODIFICATION AND AMENDMENT SHEET
(Airframe)**

Mod. No.	A.L. No.	Mod. No.	A.L. No.	Mod. No.	A.L. No.	Mod. No.	A.L. No.	Mod. No.	A.L. No.	Mod. No.	A.L. No.
5040(M)	N/A	5080(M)	††	5120(M)	N/A	5160(A)	N/A	5200(M)	2	5240(M)	4
5041(M)	N/A	5081(M)	N/A	5121(M)	N/A	5161(A)	N/A	5201(M)	C	5245(M)	2
5042(M)	N/A	5082(M)		5122(M)	C	5162(A)	N/A	5202(M)		5248(M)	2
5043(M)	††	5083(M)	N/A	5123(M)	N/A	5163(A)	N/A	5203(M)	N/A	5261(M)	2
5044(M)	N/A	5084(M)	N/A	5124(M)	N/A	5164(A)	N/A	5204(M)	N/A	5262(M)	2
5045(M)	††	5085(M)	N/A	5125(M)	N/A	5165(A)	N/A	5205(M)		5269(M)	2
5046(M)	N/A	5086(M)	N/A	5126(A)	N/A	5166(A)	N/A	5206(M)		5282(M)	2
5047(M)	N/A	5087(M)	N/A	5127(A)	N/A	5167(A)	N/A	5207(M)	N/A	5340(M)	5
5048(M)	N/A	5088(M)	N/A	5128(A)	N/A	5168(A)	N/A	5208(M)	N/A	5346(M)	4
5049(M)	N/A	5089(M)	N/A	5129(A)	N/A	5169(A)	N/A	5209(M)	††	5353(M)	2
5050(M)	††	5090(M)		5130(A)	N/A	5170(A)	N/A	5210(M)	N/A	5400(M)	2
5051(M)	††	5091(M)	††	5131(A)	N/A	5171(A)	N/A	5211(M)	N/A	5408(M)	4
5052(M)	C	5092(M)	C	5132(A)	N/A	5172(A)	N/A	5212(M)		5430(M)	4
5053(M)	N/A	5093(M)	N/A	5133(A)	N/A	5173(A)	N/A	5213(M)	N/A	5439(M)	3
5054(M)	C	5094(M)	††	5134(A)	N/A	5174(A)	N/A	5214(M)	N/A	5441(M)	4
5055(M)	N/A	5095(M)	N/A	5135(A)	N/A	5175(A)	N/A	5215(M)	N/A	5442(M)	3
5056(M)	N/A	5096(M)	††	5136(A)	N/A	5176(M)	N/A	5216(M)	N/A	5448(M)	3
5057(M)	N/A	5097(M)	N/A	5137(A)	N/A	5177(M)		5217(M)	N/A	5473(M)	6
5058(M)		5098(M)	N/A	5138(A)	N/A	5178(M)		5218(M)	2	5500(M)	10
5059(M)	N/A	5099(M)	††	5139(A)	N/A	5179(M)	N/A	5219(M)	N/A	5503(M)	7
5060(M)	N/A	5100(M)	N/A	5140(A)	N/A	5180(M)	N/A	5220(M)	††	5505(M)	10
5061(M)	††	5101(M)	N/A	5141(A)	N/A	5181(M)	N/A	5221(M)	N/A	5513(M)	7
5062(M)	N/A	5102(M)	N/A	5142(A)	N/A	5182(M)	††	5222(M)	N/A		
5063(M)		5103(M)	N/A	5143(A)	N/A	5183(M)	N/A	5223(M)	2		
5064(M)	N/A	5104(M)	N/A	5144(A)	N/A	5184(M)	N/A	5224(M)	2		
5065(M)	N/A	5105(M)	††	5145(A)	N/A	5185(M)	N/A	5225(M)			
5066(M)	N/A	5106(M)	N/A	5146(A)	N/A	5186(M)	N/A	5226(M)	N/A		
5067(M)	N/A	5107(M)	N/A	5147(A)	N/A	5187(M)	N/A	5227(M)	C		
5068(M)	N/A	5108(M)	N/A	5148(A)	N/A	5188(M)	N/A	5228(M)	2		
5069(M)	C	5109(M)	N/A	5149(A)	N/A	5189(M)	C	5229(M)	N/A		
5070(M)	N/A	5110(M)	N/A	5150(A)	N/A	5190(M)	††	5230(M)	N/A		
5071(M)	N/A	5111(M)	††	5151(A)	N/A	5191(M)		5231(M)	N/A		
5072(M)	N/A	5112(M)		5152(A)	N/A	5192(M)	N/A	5232(M)	N/A		
5073(M)		5113(M)	N/A	5153(A)	N/A	5193(M)	N/A	5233(M)	N/A		
5074(M)	N/A	5114(M)	N/A	5154(A)	N/A	5194(M)	N/A	5234(M)	N/A		
5075(M)	N/A	5115(M)	N/A	5155(A)	N/A	5195(M)	N/A	5235(M)	N/A		
5076(M)	N/A	5116(M)	N/A	5156(A)	N/A	5196(M)	††	5236(M)	††		
5077(M)	N/A	5117(M)	N/A	5157(A)	N/A	5197(M)	††	5237(M)	2		
5078(M)	N/A	5118(M)	††	5158(A)	N/A	5198(M)	††	5238(M)	2		
5079(M)	N/A	5119(M)	4	5159(A)	N/A	5199(M)	N/A	5239(M)	††		

†† Incorporated in initial issue of illustrated parts catalogue
 N.A. Mod./Amend. not applicable to this illustrated parts catalogue
 C. Modification/Amendment cancelled
 (A) Amendment
 (M) Modification

INDEX OF ASSEMBLIES

Assembly	Drawing No.	Page No.
AIRCRAFT		
General Arrangement	EB7.00.1	A.1
ARMAMENT		
Flare Gear	EA2.97.79	BA.1
CONTROLS ENGINE		
Engine Controls in Centre Fuselage	EA2.47.5	CA.1
Engine Controls in Nose Fuselage	EB7.47.3	CB.1
Engine Controls in Wing, Port	EB7.47.33	CC.1
Engine Controls in Wing, Starboard	EB7.47.45	CD.1
CONTROLS FLYING		
Flap Operating Mechanism, Port	EA1.20.701	DF.1
Flap Operating Mechanism, Starboard	EA1.20.700	DG.1
Flying Controls in Centre Fuselage	EA2.45.529	DB.1
Flying Controls in Cockpit	EB7.45.3	DA.1
Flying Controls in Rear Fuselage	EA2.45.531	DC.1
Flying Controls in Wing, Port	EA1.45.13	DD.1
Flying Controls in Wing, Starboard	EA1.45.14	DE.1
ELECTRICAL INSTALLATION		
Electrical Equipment in Centre Fuselage	EB7.81.7	EA.1
Electrical Equipment in Front Fuselage (Mod. 5022)	EB7.81.7005	EB.1
Electrical Equipment in Rear Fuselage	EB7.81.11	EC.1
Electrical Equipment in Wing, Port (Mod. 1038)	EB7.81.2567	ED.1
Electrical Equipment in Wing, Starboard (Mod 1038)	EB7.81.2568	ED.1
EQUIPMENT GROUND		
Ground Equipment	EA1.88.2	FA.1
Transportation Equipment		FA.7
EQUIPMENT AIRCRAFT		
Assemblies to be Indexed Later		

INDEX OF ASSEMBLIES

Assembly	Drawing No.	Page No.
FUSELAGE		
Centre Fuselage	EB7.00.43	KA.1
Centre Fuselage Structure	EA2.11.11	KA.3
Nose Fuselage	EB7.00.41	KB.1
Rear Fuselage	EB7.00.45	KC.1
MAINPLANES		
Aileron, Port (Pre-Mod. 875)	EA1.24.1/1	LB.1
Aileron, Port (Mod. 875)	EA3.24.1	LB.1
Aileron, Starboard (Pre-Mod. 875)	EA1.24.1/2	LB.1
Aileron, Starboard (Mod. 875)	EA3.24.2	LB.1
Undercarriage Door, Port	EA1.20.10733	LC.1
Undercarriage Door, Starboard	EA1.20.10734	LC.1
Wing and Flaps, Port	EA2.00.13	LA.1
Wing and Flaps, Starboard	EA2.00.14	LA.1
Wing Structure, Port	EA2.20.9	LE.1
Wing Structure Starboard	EA2.20.10	LE.1
Wing Tip, Port	EA1.00.67	LD.1
Wing Tip, Starboard	EA1.00.68	LD.1
MISCELLANEOUS ATTACHMENTS		
Centre Fuselage to Rear Fuselage	EB7.00.25	N.1
Controls to Rudder and Elevator	EA1.00.63	N.1
Fin to Fuselage	EA1.00.55	N.1
Front Fuselage to Centre Fuselage	EA2.00.23	N.1
Rear Fairing to Fuselage	EA1.00.59	N.2
Rudder to Fin and Fuselage	EA1.00.57	N.2
Tailplane to Rear Fuselage	EB6.00.53	N.2
Tailplane Sealing Plates		N.2
Wing to Fuselage, Port	EA1.00.21	N.3
Wing to Fuselage, Starboard	EA1.00.22	N.3
POWER INSTALLATION		
Engine Cowling, Port	EA6.50.493	PA.1
Engine Cowling, Starboard	EA6.50.495	PB.1
Engine Mountings and Attachments, Port	EA1.51.1	PC.1
Engine Mountings and Attachments, Starboard	EA1.51.2	PD.1
RA7 Engine Install	EA6.00.13	PE.1
RA7 Engine Installation, Starboard	EA6.00.14	PF.1

INDEX OF ASSEMBLIES

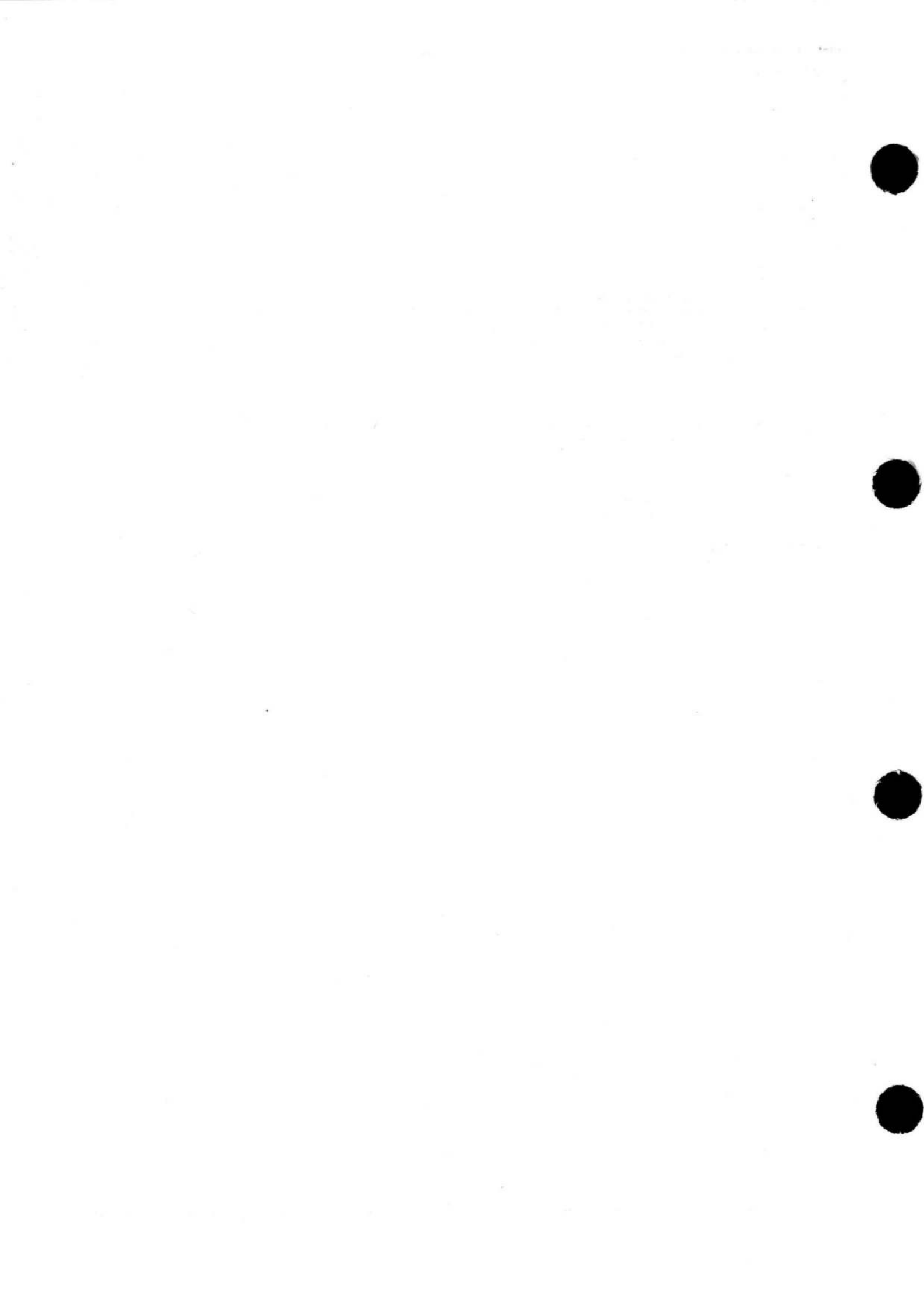
Assembly	Drawing No.	Page No.
RADAR INSTALLATION		
Decca Doppler 72 and GPI Mk. 4A, ARI 5972/2 (Mod. 5022)	EB7.82.7017	QB.1
DME RCA/AVQ75, ARI 23238/5 (Mod. 5022)	EB7.82.7021	QC.1
I.F.F./SSR 1520, ARI 23134/1 (Mod. 5022)	EB7.82.7009	QA.1
RADIO INSTALLATION		
Decca V.O.R. EAS671, ARI 2347/3 (Mod. 5022)	EB7.82.7019	RC.5
H.F. Radio, ARI 23090/9 (Mod. 5022)	EB7.82.7011	RE.1
I.L.S., ARI 18011 (Mod. 5022)	EB7.82.7005	RC.7
Intercomm, ARI 18089 (Mod 5022)	EB7.82.7003	RD.1
PTR 175 and Standby U.H.F., ARI 23143/1, ARI 23159/1 (Mod.5022)	EB7.82.7007	RC.1
Radio Altimeter, ARI 23219/4 (Mod. 5022)	EB7.82.7013	RB.1
Radio Compass, ARI 23023/1, AD7092D (Mod. 5022)	EB7.82.7015	RA.1
Radio Compass, ARI 23023/1, AD7092D (Mod. 5022)	EB7.82.7095	RA.1
Radio Junction Box (Mod. 5022)	22621	RE.4
SERVICES		
Air Ventilated Suit (Mod. 3425 - S.O.O.)	EB7.00.5091	SB.1
Cabin Pressure and Camera Heating System, Frames 13 to 21	EB7.75.9	SB.37
Cabin Pressure System in Centre Fuselage	EB7.75.7	SB.13
Cabin Pressure System in Front Fuselage	EB7.75.3	SB.5
Cabin Pressure and Cold Air System in Wing, Port (Mod. 2316)	EA9.75.891	SB.15
Cabin Pressure and Cold Air System in Wing, Starboard	EB6.75.781	SB.21
Camera - Alternative Day Role	EA2.83.7	SC.1
Camera - Day Role	EA2.83.5	SC.1
Camera (F95) - Forward Bay (Mod. 3822 - S.O.O.)	EB7.83.5233	SC.7
Camera Heating System in Centre Fuselage Front Bay (Mod. 1164) ...	EA2.75.567	SB.27
Camera Heating System, Frames 12 - 13 (Mod. 1257 - S.O.O.)	EA2.75.5003	SB.27
Camera Heating System, Frames 21-29 (Mod. 1164)	EA2.75.523	SB.33
Camera (F89 Mk. 3) Heating System, Frames 29-31 (Mod 2172 - S.O.O.)	EA2.75.5001	SB.41
Camera Heating System, Central in Rear Fuselage (Mod 1164)	EA2.75.487	SB.35

INDEX OF ASSEMBLIES

Assembly	Drawing No.	Page No.
SERVICES (Continued.....)		
Camera Installation	EA2.83.1	SC.1
Camera — Low Level Night Photography (Mod 1257 — S.O.O.) (Mod 2400 — S.O.O.)	EA2.00.5001	SC.11
Camera — Night Role	EA2.83.13	SC.3
Camera (F95) — Nose	EB7.83.5037	SC.5
Camera (F97) and Photo — Flash Fixed Fittings (Mod. 1257—S.O.O.)	EA2.00.5003	SC.11
Camera (F97) Removeable Fittings (Mod. 400)	EA2.00.5005	SC.15
Camera — Survey Role	EA2.83.11	SC.2
C.A.U. System Across Tank Bay	EB7.75.17	SB.25
Cold Air Supply to Pilot	EA3.74.21	SB.31
Demisting System (Mod. 3535)	EB7.76.1	SD.1
Equipment in Inner Wing Leading Edge, Port (Mod. 1038)	EB7.00.121	SE.1
Equipment in Inner Wing Leading Edge, Starboard (Mod. 1038) ...	EB7.00.122	SE.3
Fire Protection System		SF.1
Fuel and Air Delivery Pipes in Wing Tip, Port	EA1.57.257	SG.44
Fuel and Air Delivery Pipes in Wing Tip, Starboard	EA1.57.258	SG.44
Fuel System	EB7.57.333	SG.1
Fuel System in Centre Fuselage (Pre-Mod. 517)	EA2.57.499	SG.1
Fuel System in Centre Fuselage (Mod. 517)	EA2.57.67	SG.16
Fuel System in Wing, Port	EB7.57.17	SG.32
Fuel System in Wing Starboard	EB7.57.18	SG.32
Fuel Venting Frames 30-40	EB7.57.293	SG.45
Hydraulic System — to be Indexed Later		
Oxygen Cylinders Installation (Mod. 3821)	EB7.71.15	SJ.4
Oxygen System	EB7.71.1	SJ.1
Oxygen System — Movable Crew Member (Pre-Mod 1482)	EB7.71.189	SJ.1
Oxygen System — Navigator	EB7.71.5	SJ.3
Oxygen System — Pilot	EB7.71.3	SJ.7
Pitot and Static System in Centre Fuselage	EA2.80.341	SK.1
Pitot and Static System in Front Fuselage (Mod 4962)	EB7.80.973	SK.1
Pitot and Static System in Wing, Port	EA3.80.659	SK.8

INDEX OF ASSEMBLIES

Assembly	Drawing No.	Page No.
TAIL UNIT		
Rudder and Tab (Pre-Mod. 4478)	EA3.33.1	TA.1
Rudder and Tab (Mod. 4478) (Pre-Mod. 5043)	EA3.00.1069	TA.1
Rudder and Tab (Mod. 4833) (Pre-Mod. 5043)	EA3.00.5373	TA.1
Rudder and Tab (Mod. 5043)	EA3.00.5397	TA.1
Tailplane and Elevators	EB6.00.19	TB.1
TANKS		
Integral Tank, Port	EA1.20.3505	UC.1
Integral Tank, Starboard	EA1.20.3506	UC.1
Jettisonable Wing Tip Fuel Tank, 250 Gallon, Port (Pre-Mod. 2395)	EA3.00.505	UA.1
Jettisonable Wing Tip Fuel Tank, 250 Gallon, Port (Mod. 2395)	EB6.00.347	UA.1
Jettisonable Wing Tip Fuel Tank, 250 Gallon, Starboard (Pre-Mod. 2395)	EA3.00.506	UA.1
Jettisonable Wing Tip Fuel Tank, 250 Gallon, Starboard (Mod.2395)	EB6.00.348	UA.1
Ventral Tank	EA2.56.357	UB.1
UNDERCARRIAGE		
Main Undercarriage, Port	EA1.40.727	WA.1
Main Undercarriage, Starboard	EA1.40.728	WB.1
Nosewheel	EA9.40.1	WC.1



This file was downloaded
from the RTFM Library.

Link: www.scottbouch.com/rtfm

Please see site for usage terms,
and more aircraft documents.

