

CONTROLS
ENGINE CONTROLS IN WING PORT

Part Number	Description	No. Off	Matl. Spec.	Plate No.
EB7.47.33	CONTROLS, ENGINE IN WING, PORT, ASSEMBLY	—	—	
EB7.47.41	Spares for:— LEVER, CONTROL, CONNECTING ENGINE CONTROLS ASSEMBLY (PRE-MOD 5028)	1	—	CC1/1
EB7.47.103	LEVER, CONTROL, CONNECTING ENGINE CONTROLS ASSEMBLY (MOD 5028) Spares for:—	1	—	
SKEFCO EE.4	BEARING, ball-race	1	—	CC1/1A
SKEFCO EE.5	BEARING, ball-race	1	—	CC1/1B
HOFFMANN CJO	BEARING, spherical	2	—	CC1/2
EA1.47.61	COVER, bearing	1	L64	CC1/2A
EA1.47.57	CUP, lever mounting	1	L64	CC1/2B
EA1.47.63	CUP, lever mounting	1	—	CC1/2C
EB7.47.39	LEVER, control (Pre-Mod 5028)	1	DTD687	CC1/3
EB7.47.107	LEVER, control (Mod 5028)	1	—	
EA9.47.123	LEVER, control (Pre-Mod 5028)	1	DTD687	CC1/4
EB7.47.105	LEVER, control (Mod 5028)	1	—	
A27ES	NUT, 1/4" BSF	1	—	CC1/4A
SP90C7	PIN, split	1	—	CC1/48
EA1.47.55	PLATE, bearing cover	1	L64	CC1/4C
EA1.47.59	SLEEVE, spacing	1	L64	CC1/5
EA1.47.53	SPINDLE, control	1	L40	CC1/6
EA1.47.65	WASHER, clamping	1	L64	CC1/7
SP90G16	Attaching parts for EB7.47.41 or EB7.47.103:— Pin, split	1	—	CC1/7A
EB7.47.53	LEVER, CONTROL, CONNECTING, ENGINE CONTROLS, ASSEMBLY (PRE-MOD 5028)	1	—	CC1/8
EB7.47.95	LEVER, CONTROL, CONNECTING, ENGINE CONTROLS, ASSEMBLY (MOD 5028) Spares for:—	1	—	
EA9.47.103	BOLT	1	DTD683	CC1/9
EA9.47.97	BRACKET	1	DTD300	CC1/10
EA9.47.107	BUSH	1	S1	CC1/11
EB7.47.45	LEVER, CONTROL, ASSEMBLY (PRE-MOD 5028)	1	—	CC1/12
EB7.47.97	LEVER, CONTROL, ASSEMBLY (MOD 5028) Spares for:—	1	—	
SKEFCO EE.5	BEARING, ball-race	2	—	CC1/13
HOFFMANN CJO	BEARING, spherical	1	—	CC1/14
AGS2030/23	CIRCLIP, internal	1	—	CC1/14A
EA9.47.111	HOUSING, bearing	1	S1	CC1/14B
EA9.47.119	LEVER (Pre-Mod 5028)	1	DTD124	CC1/14C
EB7.47.99	LEVER (Mod 5028)	1	S514	
EB7.47.43	LEVER (Pre-Mod 5028)	1	DTD124	CC1/14D
EB7.47.101	LEVER (Mod 5028)	1	S514	
SP21	NIPPLE, lubrication	1	—	CC1/14E
EA9.47.121	PIECE, distance	1	DTD683	CC1/15
AS1903E12	WASHER, saddle	1	—	CC1/15A
EA9.47.99	LEVER, CONTROL, ASSEMBLY (PRE-MOD 5028)	1	—	CC1/16
EB7.47.109	LEVER, CONTROL, ASSEMBLY (MOD 5028) Spares for:—	1	—	
SKEFCO EE.5	BEARING, ball-race	2	—	CC1/17
HOFFMANN CJO	BEARING, spherical	2	—	CC1/18
AGS2030/23	CIRCLIP, internal	1	—	CC1/18A
EA9.47.111	HOUSING, bearing	1	S1	CC1/18B

CONTROLS

AP101B-0407-3A

ENGINE CONTROLS IN WING PORT

Part Number	Description	No. Off	Matl. Spec.	Plate No.
EA9.47.113	. . . LEVER (Pre-Mod 5028)	1	DTD124	CC1/18C
EB7.47.111	. . . LEVER (Mod 5028)	1	S514	
EA9.47.115	. . . LEVER (Pre-Mod 5028)	1	DTD124	CC1/18D
EB7.47.113	. . . LEVER (Mod 5028)	1	S514	
SP21	. . . NIPPLE, lubrication	1	-	CC1/18E
EA9.47.121	. . . PIECE, distance	1	DTD683	CC1/19
AS1903E12	. . . WASHER, saddle	1	-	CC1/19A
AGS575A	. . . PIN, locking	1	-	CC1/19B
EA9.47.105	. . . WASHER, clamping	2	DTD683	CC1/20
EA9.47.109	. . . WASHER, distance	1	DTD683	CC1/21
	Attaching parts for EB7.47.53 or EB7.47.95:-			
A25/4C	. Bolt, 2BA	4	-	CC1/21A
AGS2001C1/66	. Nut, stiff, 2BA	4	-	CC1/21B
EA9.47.169	. Washer, packing	4	-	CC1/23
EA6.47.139	. RELAY, engine control, assembly	1	-	CC1/22
	Attaching parts for EA6.47.139:-			
A25/6C	. Bolt, 2BA	1	-	CC1/22A
A25/4E	. Bolt, 1/4" BSF	1	-	CC1/22B
A27CP	. Nut, 2BA	1	-	CC1/22C
A27ES	. Nut, 1/4" BSF	1	-	CC1/22D
SP90C7	. Pin, split	1	-	CC1/22E
SP15E	. Washer	1	-	CC1/22F
SP15C	. Washer, 2BA	1	-	CC1/22G
EB7.47.31	. TUBE, CONTROL, FROM FUSELAGE TO CONTROL LEVER AT RIB 2, ASSEMBLY (PRE-MOD 2619)	2	-	
EB7.47.83	. TUBE, CONTROL, FROM FUSELAGE TO CONTROL LEVER AT RIB 2, ASSEMBLY (MOD 2619)	2	-	CC1/24
	Spares for:-			
EA3.47.53	. . FORK-END, adjustable	1	-	CC1/25
A27JT	. . NUT, 3/8" BSF	1	-	CC1/25A
EEAS234	. . PLUG, end	1	-	CC1/26
EB7.47.37	. TUBE, CONTROL, FROM LEVER ASSEMBLY AT RIB 2 TO INTERMEDIATE CONTROL LEVER ASSEMBLY (PRE-MOD 5028)	2	-	CC1/27
EB7.47.89	. TUBE, CONTROL, FROM LEVER ASSEMBLY AT RIB 2 TO INTERMEDIATE CONTROL LEVER ASSEMBLY (MOD 5028)	2	-	
	Spares for:-			
HOFFMANN				
CJO	. . BEARING, spherical	1	-	CC1/28
EA3.47.49	. . FORK-END, adjustable	1	-	CC1/29
A27ET	. . NUT, 1/4" BSF	1	-	CC1/29A
EA9.47.89	. TUBE, control, throttle intermediate control lever to engine control	1	-	CC1/30
EA9.47.91	. TUBE, control, shut-off cock intermediate control lever to engine control relay assembly	1	-	CC1/31
	Attaching parts for control tubes:-			
EEAS12/1	. Bolt, special	QR	S11	CC1/32
EA9.47.173	. Bolt, special	QR	-	CC1/33
EEAS63	. Nut, special	2	S11	CC1/34
SP90C7	. Pin, split	2	-	CC1/34A
SP15G	. Washer	2	-	CC1/34B
EEAS28/3DU	. Washer	2	-	CC1/35

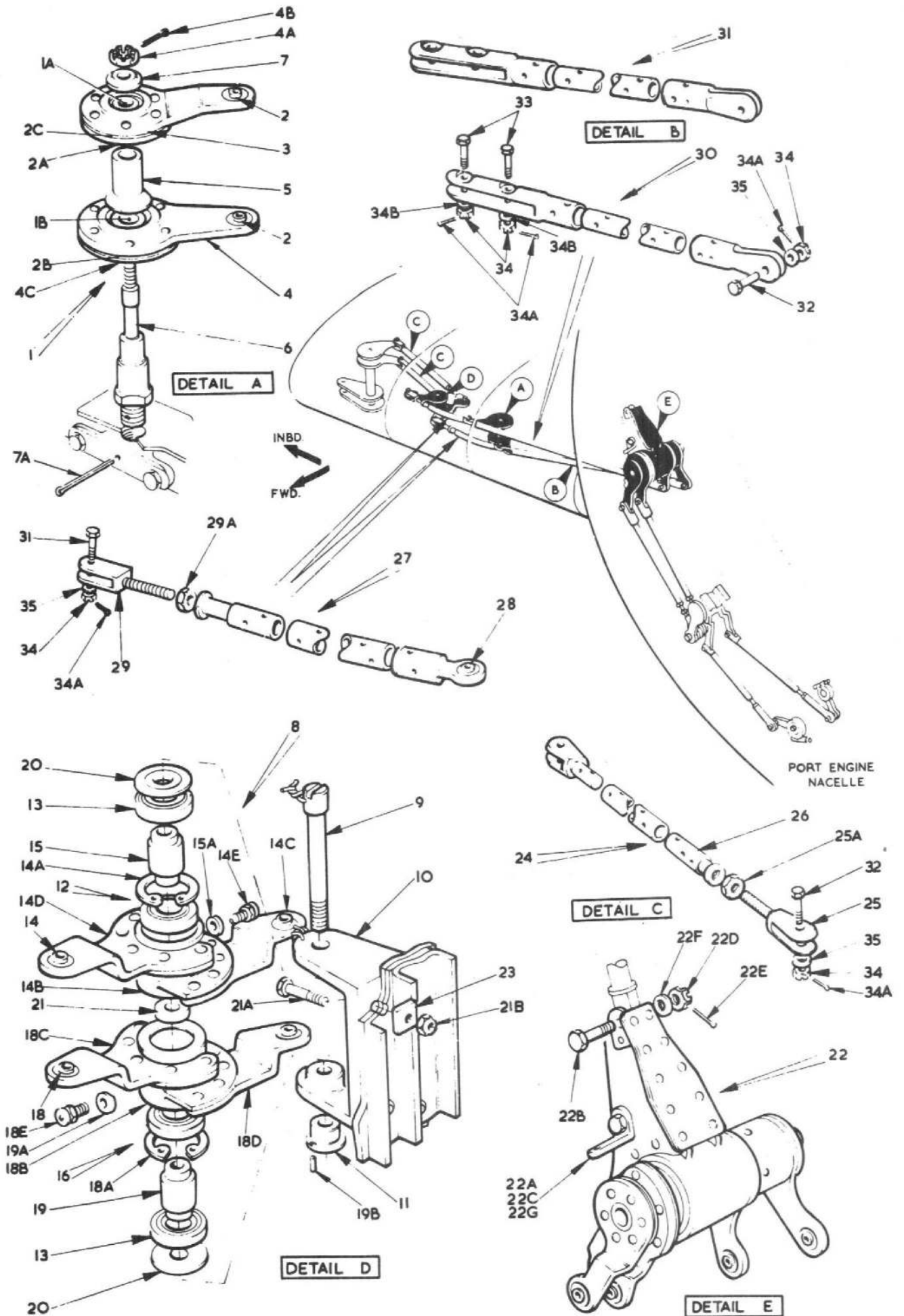


FIG.1 ENGINE CONTROLS IN PORT MAINPLANE

This file was downloaded
from the RTFM Library.
Link: www.scottbouch.com/rtfm

Please see site for usage terms,
and more aircraft documents.

