

## ELECTRICAL

## ELECTRICAL EQUIPMENT IN CENTRE FUSELAGE

Part Number	Description	No. Off	Matl. Spec.	Plate No.	
					1
EB7.81.7	ELECTRICAL EQUIPMENT IN CENTRE FUSELAGE ASSEMBLY	-	-		
EA2.81.811	EQUIPMENT WIRING AND ELECTRICAL BETWEEN FRAMES 12-13 Spares for:-	-	-		
EA3.81.1829	BAG, stowage Attaching parts for EA3.81.1829:-	4	-	EA1/1	
AS1249/1/2B	Bolt, 4BA	3	-	EA1/2	
AGS2001B1	Nut, stiff, 4BA	3	-	EA1/3	
EA2.81.161	BOX, JUNCTION NO. 4 ASSEMBLY Spares for:-	1	-	EA1/4	
703-1-00249	BLOCK, terminal, 20 way Attaching parts for 703-1-00249:-	2	-	EA1/5	
A31B24	Screw, 4BA	2	-	EA1/6	
EA1.81.583	BOX, junction, 40 way	1	-	EA1/7	
UNIPREN 6	CABLE, unipren 6	QR	-		
EA1.81.597G	COVER, ASSEMBLY Spares for:-	1	-	EA1/8	
32C/4382997	RUBBER, synthetic	QR	-		
EEAS117/1	SCREW, round head 4BA	6	-	EA1/9	
EEAS28/2CU	WASHER, 4BA	12	DTD124A	EA1/10	
EEAS42	WASHER, leather	6	-	EA1/11	
508-4-11290-004	GASKET	2	-	EA1/12	
508-4-11290-005	GASKET	2	-	EA1/13	
Z22634	GROMMET	5	-	EA1/14	
703-2-00252	LINK, connecting, 3 way	1	-	EA1/15	
703-2-00254	LINK, connecting, 5 way	1	-	EA1/16	
EA1.81.461	PLATE, blanking	1	-	EA1/17	
EA1.81.463	PLATE, blanking Attaching parts for EA3.81.461 and EA3.81.463:-	2	-	EA1/18	
A27AP	Nut, plain, 6BA	4	-	EA1/19	
A32A32	Screw, round head 6BA	4	-	EA1/20	
SP47A	Washer, spring	4	-	EA1/21	
508-1-06413	PLUG, size 'D' (Pre-Mod 3381)	1	-	EA1/22	
2CZ111229	PLUG, size 'D' (Mod 3381)	1	-		
508-2-11232-002	SLEEVE	16	-		
SIEGRIST OREL					
SL2/3	SLEEVE, 3/4" long, yellow	16	-		
SL3/3	SLEEVE, 3/8" long, yellow	24	-		
703-2-00315-020	TAG, Q.R.	16	-		
703-2-00339-020	THIMBLE	16	-		
AGS2002C1	Nut, stiff, 2BA Attaching parts for EA2.81.161:-	2	-	EA1/23	
A32C24	Screw, 2BA	2	-	EA1/24	
No. 10R	Screw, self tapping 1/4" long, type 4101	2	-	EA1/25	
EB7.81.5669	CHANNEL	1	-	EA1A/1	
EB7.81.5673	CHANNEL	5	-	EA1A/2	
EB7.81.5781	CLEAT	6	-	EA1A/3	
AS3180/3B	CLIP, cable	8	-	EA1A/4	
AS3180/4B	CLIP, cable	9	-	EA1A/5	
AS3180/5B	CLIP, cable	1	-	EA1A/6	
AS3180/16B	CLIP, cable Attaching parts for Cable Clips:-	2	-	EA1A/7	
A25/1B	Bolt, 4BA	1	-	EA1A/8	
AGS2001B1	Nut, stiff, 4BA	1	-	EA1A/9	
A32B16	Screw, round head, 4BA	1	-	EA1A/10	
SP13B	Washer, 4BA	1	-	EA1A/11	

## ELECTRICAL

## ELECTRICAL EQUIPMENT IN CENTRE FUSELAGE

Part Number	Description	No. Off	Mati. Spec.	Plate No.
R AS3180/7B	. . CLIP, cable	5	—	EA1A/12
R AS3180/8B	. . CLIP, cable	7	—	EA1A/13
R AS3180/14B	. . CLIP, cable	2	—	EA1A/14
	Attaching parts for Cable Clips:—			
R A25/1B	. . Bolt, 4BA	1	—	EA1A/15
R AGS2001B1	. . Nut, stiff, 4BA	1	—	EA1A/16
R SP15B	. . Washer, 4BA	1	—	EA1A/17
R AS3180/6B	. . CLIP, cable	2	—	EA1A/18
R AS3180/9B	. . CLIP, cable	1	—	EA1A/19
	Attaching parts for AS3180/6B and AS3180/9B:—			
R A25/1B	. . Bolt, 4BA	1	—	EA1A/20
R AGS2001B1	. . Nut, stiff, 4BA	1	—	EA1A/21
R SP15B	. . Washer, 4BA	1	—	EA1A/22
R AS3180/10B	. . CLIP, cable	1	—	EA1A/23
R AS491/12B	. . CLIP, cable	2	—	EA1A/24
R AS491/18	. . CLIP, cable	1	—	EA1A/25
R AS491/27	. . CLIP, cable	1	—	EA1A/26
R AS491/34	. . CLIP, cable	1	—	EA1A/27
R AS3180/6B	. . CLIP (Mod 4354—S.O.O.)	1	—	†
R AS3180/10B	. . CLIP (Mod 4354—S.O.O.)	1	—	†
	Attaching parts for AS3180/6B and AS3180/10B:—			
R A25/1B	. . Bolt (As required)	1	—	†
R AGS2001B1	. . Nut (As required)	1	—	†
R EEAS237/6A	. . Washer, 'D' (As required)	1	—	†
R EEAS238/1A	. . Washer, 'D' (As required)	1	—	†
R EA2.81.177	. . FAIRLEAD	2	—	EA1A/28
R EA2.81.179	. . FAIRLEAD	2	—	EA1A/29
	Attaching parts for EA2.81.177 and EA2.81.179:—			
R A32C20	. . Screw, round head 2BA	6	—	EA1A/30
R AGS2002C1	. . Nut, stiff	6	—	EA1A/31
R EB7.81.2577	. . FAIRLEAD (Mod 1038)	1	—	EA1A/32
	Attaching parts for EB7.81.2577:—			
R A32B20	. . Screw, round head 4BA	4	—	EA1A/33
R AGS2001B1	. . Nut, stiff, 4BA	4	—	EA1A/34
R EB6.80.5685	. . FAIRLEAD, half (Mod 4127)	2	—	EA1A/35
	Attaching parts for EB6.80.5685:—			
R A25/3B	. . Bolt	4	—	EA1A/36
R SP15B	. . Washer	4	—	EA1A/37
R EB7.80.5121	. . FAIRLEAD, half	2	—	EA1A/38
	Attaching parts for EB7.80.5121:—			
R A25/3B	. . Bolt, 4BA	2	—	EA1A/39
R SP15B	. . Washer, 4BA	2	—	EA1A/40
R 5L/9953271	. . FILAMENT, 28v, 7 watt	2	—	EA1A/41
R 5CX/4330002	. . LAMP, cockpit, Mk. 1A	2	—	EA1A/42
	Attaching parts for 5CX/4330002:—			
R A32B16	. . Screw, round head	3	—	EA1A/43
R EA2.81.439	. . PANEL, mounting lamp (Pre—Mod 891)	1	—	EA1A/44
R EA2.81.1067	. . PANEL, mounting lamp (Mod 891)	1	—	
R EA2.81.613	. . PLATE, mounting stowage bag	2	—	EA1/26

## ELECTRICAL

## ELECTRICAL EQUIPMENT IN CENTRE FUSELAGE

Part Number	Description	1 2 3 4 5 6						No. Off	Mati. Spec.	Plate No.
R EEAS132/7	. . STRAP, cable c/w buckle, 7" long Attaching parts for EEAS132/7:—							2	—	EA1A/45
R AS1249/1B	. . Bolt, mush. head 4BA							1	—	EA1A/46
R AGS2001B1	. . Nut, stiff, 4BA							1	—	EA1A/47
R EEAS28/18DR	. . Washer, 4BA							1	—	EA1A/48
R EEAS132/9	. . STRAP, cable c/w buckle, 9" long							3	—	EA1A/49
R EEAS132/12	. . STRAP, cable c/w buckle, 12" long							4	—	EA1A/50
HELLERMANN										
HV3254	. . STRAP, 3" wide							QR	—	
NY3255	. . STUD							25	—	
R EA2.81.563	. . TUBE, support, cable looms							1	—	EA1A/51
R EA2.81.671	. . TUBE, support, cable looms Attaching parts for EA2.81.563 and EA2.81.671:—							1	—	EA1A/52
R A25/4C	. . Bolt, 2BA							2	—	EA1A/53
R AGS2001C1/66	. . Nut, stiff, 2BA							2	—	EA1A/54
R AS2809/4/403	. . TUBE, distance, cable looms support							4	—	EA1A/55
R 5F2335	. . TUBE, PVC							QR	—	†
R 5F4349856	. . TUBE, PVC							QR	—	†
EB7.81.1479	. EQUIPMENT WIRING AND ELECTRICAL BETWEEN FRAMES 13-21 Spares for:—							—	—	
EA2.81.849	. . BRACKET, strap support Attaching parts for EA2.81.849:—							10	—	EA2/1
A25/1C	. . Bolt, 2BA							2	—	EA2/2
A27CP	. . Nut, plain, 2BA							2	—	EA2/3
SP47C	. . Washer, 2BA							2	—	EA2/4
EA2.73.53	. . CLIP, half for brackets							9	—	EA2/5
AS3180/16B	. . CLIP, cable Attaching parts for AS3180/16B:—							7	—	EA2/6
A25/1B	. . Bolt, 4BA							1	—	EA2/7
AGS2001B1	. . Nut, stiff, 4BA							1	—	EA2/8
SP15B	. . Washer, 4BA							1	—	EA2/9
AS3180/12B	. . CLIP, cable Attaching parts for AS3180/12B:—							1	—	EA2/10
A25/1/2B	. . Bolt							1	—	EA2/11
AGS2001B1	. . Nut, stiff							1	—	EA2/12
EEAS21/2ER	. . Washer							1	—	EA2/13
EB7.81.2555	. . CLIP, cable Attaching parts for EB7.81.2555:—							6	—	EA2/14
A25/1C	. . Bolt, 2BA							2	—	EA2/15
EA3.75.55	. . Washer, 2BA							2	—	EA2/16
EA2.81.183	. . FAIRLEAD Attaching parts for EA2.81.183:—							4	—	EA2/17
AGS2001B1	. . Nut, stiff, 4BA							6	—	EA2/18
A31B20	. . Screw, cheese head 4BA							6	—	EA2/19
EB7.75.111	. . LAGGING, cable, frame 21							1	—	
EB7.81.2559	. . PLATE, support between frames 15-16 Attaching parts for EB7.81.2559:—							1	—	EA2/20
A25/2C	. . Bolt, 2BA							4	—	EA2/21
AGS2001C1/66	. . Nut, stiff, 2BA							4	—	EA2/22
SP15C	. . Washer, 2BA							4	—	EA2/23
—	. . PLATE, cable support (C/Mod/Can/0284/BC, Fig. 2) (Mod 5182)							1	L73	†
EB6.81.6237	. . PLUG, GROUND SUPPLY, HEATING OF DECCA CRYSTAL OVENS, FRAME 20 INSTALLATION (MOD 4297—S.O.O.) Spares for:—							—	—	†
EB6.81.6227	. . . PLATE, adaptor Attaching parts for EB6.81.6227:—							1	—	†
A25/1C	. . Bolt, 2BA							4	—	†
GCB3LV14	. . . PLUG, external power supply 28 volt Attaching parts for GCB3LV14:—							1	—	†
A25/2C	. . Bolt, 2BA							6	—	†
EB6.81.6235	. . Gasket							1	—	†
SP47C	. . Washer							6	—	†

## ELECTRICAL

## ELECTRICAL EQUIPMENT IN CENTRE FUSELAGE

Part Number	1 2 3 4 5 6	Description	No. Off	Mati. Spec.	Plate No.
EA2.81.839	. .	STRAP, frames 13-14	2	-	EA2/24
		Attaching parts for EA2.81.839:-			
A31B12	. .	Screw, 4BA	2	-	EA2/25
EEAS132/9	. .	STRAP, cable c/w buckle, 9" long	8	-	EA2/26
EEAS132/12	. .	STRAP, cable c/w buckle, 12" long	4	-	EA2/27
		Attaching parts for EEAS132/9 and EEAS132/12:-			
AS1248/1/2B	. .	Bolt, 4BA	1	-	EA2/28
EEAS73	. .	Plate, clamp	1	-	EA2/29
HELLERMANN HV3254	. .	STRAP	QR	-	†
HELLERMANN NY3255	. .	STUD	14	-	†
EB7.81.1477	. .	STUD, earthing	2	-	EA2/30
EB7.81.809	. .	EQUIPMENT, WIRING AND ELECTRICAL, BETWEEN FRAMES 21B AND 22	-	-	
		Spares for:-			
EA2.81.835	. .	BRACKET, cable clip support	1	-	EA3/1
		Attaching parts for EA2.81.835:-			
A25/1B	. .	Bolt, 4BA	2	-	EA3/2
AGS2001B1	. .	Nut, stiff, 4BA	2	-	
EA2.81.855 SMITH	. .	BRACKET, trimmer box	2	-	EA3/3
WAYMOUTH JLA103/111 SMITH	. .	BOX, trimmer cable connector, port	1	-	EA3/4
WAYMOUTH JLA103/41	. .	BOX, trimmer cable connector, starboard	1	-	EA3/5
		Attaching parts for JLA103/111 and JLA103/41:-			
AGS2001C1/66	. .	Nut, stiff, 2BA	2	-	
A31C16	. .	Screw, cheese head 2BA	2	-	EA3/6
EB7.81.5807	. .	BOX, JUNCTION, NO. 1, ASSEMBLY	1	-	EA3/7
		Spares for:-			
703-1-00249	. . .	BLOCK, terminal, 20 way	2	-	EA3/8
		Attaching parts for 703-1-00249:-			
A43B24	. . .	Screw, cheese head	2	-	EA3/9
EA1.81.583	. . .	BOX, junction, 40 way	1	-	EA3/10
EA1.81.597A	. . .	COVER, assembly	1	-	EA3/11
508-4-11290-004	. . .	GASKET	2	-	
508-4-11290-005	. . .	GASKET	2	-	
703-2-00257	. . .	LINK, connecting, 8 way	1	-	
EA1.81.464	. . .	PLATE, adapting	2	-	EA3/12
EA1.81.461	. . .	PLATE, blanking	1	-	EA3/13
		Attaching parts for EA1.81.464 and EA1.81.461:-			
A27AP	. . .	Nut, plain, 6BA	4	-	
A32A10	. . .	Screw, round head, 6BA	4	-	EA3/14
SP47A	. . .	Washer, spring, 6BA	4	-	
508-1-06413	. . .	PLUG, size 'D'	1	-	EA3/15
EEAS146B	. . .	SLEEVE, 3/4" long	QR	-	
EEAS146A	. . .	SLEEVE, 3/4" long	QR	-	
EEAS146A	. . .	SLEEVE, 1/4" long	QR	-	
EEAS146/6	. . .	SLEEVE, 3/8" long	QR	-	
508-2-11232-002	. . .	SLEEVE	15	-	

## ELECTRICAL

## ELECTRICAL EQUIPMENT IN CENTRE FUSELAGE

Part Number	Description	No. Off	Matl. Spec.	Plate No.
HC490	. . . TAG, QR	2	—	
HC500	. . . TAG, QR	2	—	
HC510	. . . TAG, QR	15	—	
5X9000062	. . . THIMBLE	15	—	
5X9000064	. . . THIMBLE	2	—	†
5X9000066	. . . THIMBLE	2	—	†
	Attaching parts for EB7.81.5807:—			
AGS2001C1/66	. . Nut, stiff, 2BA	2	—	EA3/16
EB7.81.3061	. . BOX, JUNCTION, NO. 3, ASSEMBLY (PRE-MOD 3970)	1	—	EA3/17
EB7.81.6055	. . BOX, JUNCTION, NO. 3, ASSEMBLY (MOD 3970)	1	—	
	Spares for:—			
703-1-00249	. . . BLOCK, terminal, 20 way	2	—	EA3/18
	Attaching parts for 703-1-00249:—			
A43B24	. . . Screw, cheese head 4BA	2	—	EA3/19
EA3.81.583	. . . BOX, junction 40 way	1	—	EA3/20
EB7.81.923	. . . COVER, assembly	1	—	EA3/21
Z23198	. . . GASKET	2	—	EA3/22
Z23197	. . . GASKET	1	—	EA3/23
Z23672	. . . GROMMET	1	—	EA3/24
Z50210	. . . LINK, connecting, 2 way	3	—	
Z50217	. . . LINK, connecting, 9 way	1	—	
EA1.81.464	. . . PLATE, adaptor	2	—	EA3/25
EA1.81.461	. . . PLATE, blanking	1	—	EA3/26
	Attaching parts for EA1.81.464 and EA1.81.461:—			
A27AP	. . . Nut, plain, 6BA	4	—	EA3/27
A32A12	. . . Screw, round head 6BA	4	—	EA3/28
SP47A	. . . Washer, spring, 6BA	4	—	EA3/29
CZ50361	. . . PLUG, size 'D'	1	—	EA3/30
or				
2CZ111229	. . . PLUG, size 'D'	1	—	
EEAS146A	. . . SLEEVE, $\frac{3}{4}$ " long, yellow	QR	—	
EEAS146C	. . . SLEEVE, $\frac{3}{4}$ " long	QR	—	
EEAS146A1	. . . SLEEVE, $\frac{3}{4}$ " long	QR	—	
EEAS146B	. . . SLEEVE, $\frac{3}{8}$ " long, yellow	—	—	
Z49428	. . . SLEEVE	16	—	
Z19924	. . . TAG, QR	18	—	
703-2-00317-020	. . . TAG, QR	2	—	
	Attaching parts for EB7.81.3061 and EB7.81.6055:—			
AGS2001C1/66	. . Nut, stiff, 2BA	4	—	EA3/31
EA2.81.673	. . CHANNEL, fairlead mounting	2	—	EA3/32
AS3180/3B	. . CLIP, cable	1	—	EA3/33
AS3180/4B	. . CLIP, cable	10	—	EA3/34
AS3180/6B	. . CLIP, cable	5	—	EA3/35
AS3180/16B	. . CLIP, cable	1	—	EA3/36
	Attaching parts for AS3180/clips:—			
AGS2001B1	. . Nut, stiff, 4BA (As required)	1	—	EA3/37
A31B12	. . Screw, cheese head 4BA (As required)	1	—	EA3/38
A31B16	. . Screw (As required)	1	—	EA3/39
SP15B	. . Washer (As required)	1	—	EA3/40

## ELECTRICAL

## ELECTRICAL EQUIPMENT IN CENTRE FUSELAGE

Part Number	Description	No. Off	Mati. Spec.	Plate No.
AS3180/8B	. . . CLIP, cable	4	—	EA3/39
AS3180/18B	. . . CLIP, cable	1	—	EA3/40
A25/1B	Attaching parts for AS3180/8B and AS3180/18B:—			
AGS2001B1	. . . Bolt, 4BA	1	—	EA3/41
SP15B	. . . Nut, 4BA	1	—	
	. . . Washer, 4BA	1	—	
AS3180/10B	. . . CLIP, cable	5	—	EA3/42
508-1-40189-320	. . . CONNECTOR, bulkhead, plug/socket	1	—	EA3/43
508-1-40196-320	. . . CONNECTOR, bulkhead, plug/socket	1	—	EA3/44
—	. . . EQUIPMENT, CRASH TRIP INSTALLATION (MOD 4073) (For aircraft embodying Mod 3302) (Ref. Drgs, EB7.00.271, EB7.81.5821 and EB7.81.6703) Spares for:—	—	—	
EB7.81.5825	. . . BRACKET, mounting relay Attaching parts for EB7.81.5825:—	2	—	EA4/1
A25/1C	. . . Bolt, 2BA	4	—	EA4/2
AGS2001C1/66	. . . Nut, 2BA	4	—	EA4/3
SP13C	. . . Washer	4	—	EA4/4
A260	. . . FILAMENT, 28 volt, 2 watt	1	—	†
EB8.81.6129	. . . GANG, SWITCH, ASSEMBLY Spares for:—	1	—	EA4/5
EB8.81.6129A	. . . LINK, half Attaching parts for EB8.81.6129A:—	2	—	EA4/6
AGS2002A1	. . . Nut, 6BA	1	—	EA4/7
A31A10	. . . Screw, 6BA	1	—	EA4/8
C180A8	. . . LAMP, warning red	1	—	EA4/9
EB8.81.6127	. . . PANEL, engraved (Pre—Mod 5099)	1	—	EA4/10
EB7.81.6695	. . . PANEL, engraved (Alt. R60/60—Mod 5099)	1	—	†
EB7.81.5827	. . . PLATE, mounting relay	1	—	EA4/11
D4600	. . . RELAY, type 20B No. 2 Attaching parts for D4600:—	1	—	EA4/12
AS1246/1B	. . . Screw, 4BA	3	—	EA4/13
AGS2001B1	. . . Nut, 4BA	3	—	EA4/14
SP13B	. . . Washer	3	—	EA4/15
AS10512M1	. . . SHROUD, terminal (Alt. R60/60—Mod 5099)	2	—	†
A258	. . . SLEEVE, cable	1	—	†
B186	. . . SOCKET, connector	1	—	EA4/16
E and I 4146A	. . . SOCKET, test Attaching parts for E and I 4146A:—	1	—	EA4/17
AS1246/2B	. . . Bolt, 4BA	2	—	EA4/18
AGS2001B1	. . . Nut, 4BA	2	—	EA4/19
SP15B	. . . Washer	2	—	EA4/20
8800B111	. . . SWITCH, SP (Pre—Mod 5099)	2	—	EA4/21
EK5.81.925	. . . SWITCH, ASSEMBLY (Alt. R60/60—Mod 5099) Spares for:—	1	—	†
DN260Z74	. . . CAP, dolly	2	—	†
1367Z2	. . . KNOB	1	—	†
AS10512A4	. . . SWITCH	2	—	†
EEAS200	. . . WASHER, locking (Pre—Mod 5099)	2	—	
L1023	. . . FILAMENT, 28v, 7 watt	1	—	

R  
R  
RR  
R  
R

## ELECTRICAL

## ELECTRICAL EQUIPMENT IN CENTRE FUSELAGE

Part Number	Description	No. Off	Matl. Spec.	Plate No.
NATIONAL PLASTIC SALES X114	. . GROMMET, plastic section 4"	1	-	
5CX4330002	. . LAMP, cockpit, Mk. 1A Attaching parts for 5CX4330002:-	1	-	EA3/45
A31B16	. . Screw, cheese head, 4BA	3	-	EA3/46
508-1-06459	. . PLUG, bulkhead, 26 way	2	-	
10H0540103	. . PLUG, bulkhead	2	-	EA3/47
EEAS132/12	. . STRAP, cable c/w buckle 12" long Attaching parts for EEAS132/12:-	1	-	EA3/48
AS1248/1B	. . Bolt, 4BA	1	-	EA3/49
AGS2001B1	. . Nut, stiff, 4BA	1	-	EA3/50
EEAS73	. . Plate, clamp	1	-	EA3/51
EEAS132/9	. . STRAP, cable c/w buckle 9" long Attaching parts for EEAS132/9:-	1	-	EA3/52
EEAS73	. . Plate, clamp	1	-	
6M x 1/2 "	. . Screw, mush. head self tapping	1	-	EA3/53
HELLERMANN HV3254	. . STRAP	QR	-	†
HELLERMANN NY3255	. . STUD	6	-	†
DOWTY C18317 Mk. 2	. . SWITCH, micro Attaching parts for C18317 Mk. 2:-	4	-	EA3/54
A25/24C	. . Bolt, 2BA	2	-	
SP13C	. . Washer	2	-	EA3/55
EA2.81.817	. EQUIPMENT, WIRING AND ELECTRICAL BETWEEN FRAMES 22-23 Spares for:-	-	-	
SMITH WAYMOUTH F.A.A. 5CZ1053794	. . AMPLIFIER . . BLOCK, terminal, 2 way Attaching parts for 5CZ/1053794:-	2 2	- -	EA5/1 EA5/2
AGS2001A1	. . Nut, 6BA	2	-	EA5/3
A33A20	. . Screw, 6BA	2	-	EA5/4
SMITH WAYMOUTH XA	. . BRACKET, amplifier support Attaching parts for XA:-	2	-	EA5/5
AS1242/2C	. . Bolt, 2BA	4	-	
AGS2001C1/66	. . Nut, 2BA	4	-	EA5/6
SP16C	. . Washer	4	-	
EA2.81.975	. . BRACKET, angle, stringer 13 Attaching parts for EA2.81.975:-	1	-	EA5/7
A25/1B	. . Bolt, 4BA	1	-	
AGS2001B1	. . Nut, 4BA	1	-	EA5/8

## ELECTRICAL

## ELECTRICAL EQUIPMENT IN CENTRE FUSELAGE

Part Number	Description	No. Off	Mati. Spec.	Plate No.
EA2.81.837	. . BRACKET, cable clips support Attaching parts for EA2.81.837:—	1	—	EA5/9
A25-1-2B	. . Bolt, 4BA	1	—	EA5/10
A25/1B	. . Bolt, 4BA	1	—	EA5/11
AGS2001B1	. . Nut, 4BA	2	—	
AS3180/3B	. . CLIP, 'P', rubber covered	1	—	EA5/12
AS3180/4B	. . CLIP, 'P', rubber covered	10	—	EA5/13
AS3180/6B	. . CLIP, 'P', rubber covered	6	—	EA5/14
AS180/8B	. . CLIP, 'P', rubber covered	2	—	EA5/15
	Attaching parts for AS3180/clips:—			
AGS2001B1	. . Nut, 4BA	1	—	EA5/16
A31B12 or A31B16	. . Screw, 4BA . . Screw, 4BA	1 1	— —	EA5/17
AS3180/7B	. . CLIP, 'P', rubber covered	3	—	EA5/18
AS3180/14B	. . CLIP, 'P', rubber covered Attaching parts for AS3180/7B and AS3180/14B:—	4	—	EA5/19
AGS2001B1	. . Nut, 4BA	1	—	
SP15B	. . Washer	1	—	
EA2.81.1195	. . FAIRLEAD, half Attaching parts for EA2.81.1195:—	2	—	EA5/20
A25/2B	. . Bolt, 4BA	3	—	EA5/21
AGS2001B1	. . Nut, 4BA	3	—	EA5/22
EEAS132/7	. . STRAP, c/w buckle	1	—	EA5/23
EEAS132/9	. . STRAP, c/w buckle Attaching parts for EEAS132/7 and EEAS132/9:—	4	—	EA5/24
AS1248/1B or AS1248/2B	. . Bolt, 4BA	1	—	EA5/25
AGS2001B1	. . Nut, 4BA	1	—	EA5/26
EEAS73	. . Plate, clamp	1	—	EA5/27
HELLERMANN HV3254 NY3255	. . STRAP . . STUD	QR 6	— —	
EA2.81.997	. EQUIPMENT, WIRING AND ELECTRICAL BETWEEN FRAMES 23-24 Spares for:—	—	—	
EA2.81.841	. . BRACKET Attaching parts for EA2.81.841:—	2	—	EA6/1
A25/1B	. . Bolt, 4BA	1	—	EA6/2
AGS2001B1	. . Nut, 4BA	1	—	EA6/3
SP15B	. . Washer	1	—	EA6/4
EA2.81.999	. . BRACKET, mounting suppressor Attaching parts for EA2.81.999:—	2	—	EA6/5
A25/1B	. . Bolt, 4BA	4	—	EA6/6
AGS2001B1	. . Nut, 4BA	4	—	EA6/7
SP13B	. . Washer	4	—	EA6/8
AS3180/3B	. . CLIP, 'P', rubber covered	6	—	EA6/9
AS3180/4B	. . CLIP, 'P', rubber covered Attaching parts for AS3180/3B and AS3180/4B:—	14	—	EA6/10
AGS2001B1	. . Nut, 4BA	1	—	
A31B12	. . Screw, 4BA	1	—	EA6/11

## ELECTRICAL

## ELECTRICAL EQUIPMENT IN CENTRE FUSELAGE

Part Number	Description	No. Off	Matl. Spec.	Plate No.
NATIONAL PLASTIC SALES X114	. . . GROMMET, plastic section 4"	1	-	
5CX4330002	. . . LAMP, cockpit, Mk. 1A Attaching parts for 5CX4330002:-	1	-	EA3/45
A31B16	. . . Screw, cheese head, 4BA	3	-	EA3/46
508-1-06459	. . . PLUG, bulkhead, 26 way	2	-	
10H0540103	. . . PLUG, bulkhead	2	-	EA3/47
EEAS132/12	. . . STRAP, cable c/w buckle 12" long Attaching parts for EEAS132/12:-	1	-	EA3/48
S1248/1B	. . . Bolt, 4BA	1	-	EA3/49
AGS2001B1	. . . Nut, stiff, 4BA	1	-	EA3/50
EEAS73	. . . Plate, clamp	1	-	EA3/51
EEAS132/9	. . . STRAP, cable c/w buckle 9" long Attaching parts for EEAS132/9:-	1	-	EA3/52
EEAS73	. . . Plate, clamp	1	-	
6M x 1/2 "	. . . Screw, mush. head self tapping	1	-	EA3/53
HELLERMANN HV3254	. . . STRAP	QR	-	†
HELLERMANN NY3255	. . . STUD	6	-	†
DOWTY C18317 Mk. 2	. . . SWITCH, micro Attaching parts for C18317 Mk. 2:-	4	-	EA3/54
A25/24C	. . . Bolt, 2BA	2	-	
SP13C	. . . Washer	2	-	EA3/55
EA2.81.817	. . . EQUIPMENT, WIRING AND ELECTRICAL BETWEEN FRAMES 22-23 Spares for:-	-	-	
SMITH WAYMOUTH F.A.A.	. . . AMPLIFIER	2	-	EA5/1
5CZ1053794	. . . BLOCK, terminal, 2 way Attaching parts for 5CZ/1053794:-	2	-	EA5/2
AGS2001A1	. . . Nut, 6BA	2	-	EA5/3
A33A20	. . . Screw, 6BA	2	-	EA5/4
SMITH WAYMOUTH XA	. . . BRACKET, amplifier support Attaching parts for XA:-	2	-	EA5/5
AS1242/2C	. . . Bolt, 2BA	4	-	
AGS2001C1/66	. . . Nut, 2BA	4	-	EA5/6
SP16C	. . . Washer	4	-	
EA2.81.975	. . . BRACKET, angle, stringer 13 Attaching parts for EA2.81.975:-	1	-	EA5/7
A25/1B	. . . Bolt, 4BA	1	-	
AGS2001B1	. . . Nut, 4BA	1	-	EA5/8

## ELECTRICAL

## ELECTRICAL EQUIPMENT IN CENTRE FUSELAGE

Part Number	Description	No. Off	Matl. Spec.	Plate No.					
				1	2	3	4	5	6
EA2.81.837	. . BRACKET, cable clips support Attaching parts for EA2.81.837:—	1	—						EA5/9
A25-1-2B	. . Bolt, 4BA	1	—						EA5/10
A25/1B	. . Bolt, 4BA	1	—						EA5/11
AGS2001B1	. . Nut, 4BA	2	—						
AS3180/3B	. . CLIP, 'P', rubber covered	1	—						EA5/12
AS3180/4B	. . CLIP, 'P', rubber covered	10	—						EA5/13
AS3180/6B	. . CLIP, 'P', rubber covered	6	—						EA5/14
AS180/8B	. . CLIP, 'P', rubber covered	2	—						EA5/15
AGS2001B1	. . Nut, 4BA	1	—						EA5/16
A31B12	. . Screw, 4BA	1	—						EA5/17
or A31B16	. . Screw, 4BA	1	—						
AS3180/7B	. . CLIP, 'P', rubber covered	3	—						EA5/18
AS3180/14B	. . CLIP, 'P', rubber covered Attaching parts for AS3180/7B and AS3180/14B:—	4	—						EA5/19
AGS2001B1	. . Nut, 4BA	1	—						
SP15B	. . Washer	1	—						
EA2.81.1195	. . FAIRLEAD, half Attaching parts for EA2.81.1195:—	2	—						EA5/20
A25/2B	. . Bolt, 4BA	3	—						EA5/21
AGS2001B1	. . Nut, 4BA	3	—						EA5/22
EEAS132/7	. . STRAP, c/w buckle	1	—						EA5/23
EEAS132/9	. . STRAP, c/w buckle Attaching parts for EEAS132/7 and EEAS132/9:—	4	—						EA5/24
AS1248/1B	. . Bolt, 4BA	1	—						EA5/25
or AS1248/2B	. . Bolt, 4BA	1	—						
AGS2001B1	. . Nut, 4BA	1	—						EA5/26
EEAS73	. . Plate, clamp	1	—						EA5/27
HELLERMANN HV3254	. . STRAP	QR	—						
NY3255	. . STUD	6	—						
EA2.81.997	. . EQUIPMENT, WIRING AND ELECTRICAL BETWEEN FRAMES 23-24 Spares for:—	—	—						
EA2.81.841	. . BRACKET Attaching parts for EA2.81.841:—	2	—						EA6/1
A25/1B	. . Bolt, 4BA	1	—						EA6/2
AGS2001B1	. . Nut, 4BA	1	—						EA6/3
SP15B	. . Washer	1	—						EA6/4
EA2.81.999	. . BRACKET, mounting suppressor Attaching parts for EA2.81.999:—	2	—						EA6/5
A25/1B	. . Bolt, 4BA	4	—						EA6/6
AGS2001B1	. . Nut, 4BA	4	—						EA6/7
SP13B	. . Washer	4	—						EA6/8
AS3180/3B	. . CLIP, 'P', rubber covered	6	—						EA6/9
AS3180/4B	. . CLIP, 'P', rubber covered Attaching parts for AS3180/3B and AS3180/4B:—	14	—						EA6/10
AGS2001B1	. . Nut, 4BA	1	—						
A31B12	. . Screw, 4BA	1	—						EA6/11

## ELECTRICAL

## ELECTRICAL EQUIPMENT IN CENTRE FUSELAGE

Part Number	1 2 3 4 5 6	Description	No. Off	Matl. Spec.	Plate No.
AS3180/6B	. .	CLIP, 'P', rubber covered	1	—	EA6/12
A25/2B	. .	Attaching parts for AS3180/6B:—	1	—	EA6/13
AGS2001B1	. .	Bolt, 4BA	1	—	
	. .	Nut, 4BA	1	—	
AS3180/8B	. .	CLIP, 'P', rubber covered	3	—	EA6/14
AS3180/14B	. .	CLIP, 'P', rubber covered	2	—	EA6/15
	. .	Attaching parts for AS3180/8B and AS3180/14B:—			
A25/1B	. .	Bolt, 4BA	1	—	EA6/16
AGS2001B1	. .	Nut, 4BA	1	—	
SP15B	. .	Washer	1	—	EA6/17
EEAS132/7	. .	STRAP, c/w buckle	1	—	EA6/18
EEAS132/12	. .	STRAP, c/w buckle	1	—	EA6/19
	. .	Attaching parts for EEAS132/7 and EEAS132/2:—			
AS1248/2B	. .	Bolt, 4BA	1	—	EA6/20
AGS2001B1	. .	Nut, 4BA	1	—	EA6/21
EEAS73	. .	Plate, clamping	1	—	EA6/22
HELLERMANN HV3254	. .	STRAP, $\frac{5}{16}$ " wide	QR	—	
HELLERMANN NY3255	. .	STUD	6	—	
EL26317	. .	SUPPRESSOR, Type O, No. 2	2	—	EA6/23
	. .	Attaching parts for EL26317:—			
A31B20	. .	Screw, 4BA	4	—	EA6/24
SP13B	. .	Washer	4	—	EA6/25
EA2.81.821	. .	EQUIPMENT, WIRING AND ELECTRICAL BETWEEN FRAMES 24 and 26 Spares for:—	—	—	
SMITH WAYMOUTH F.A.A.	. .	AMPLIFIER	1	—	EA7/1
SMITH WAYMOUTH JY86	. .	BOX, connection	1	—	EA7/2
	. .	Attaching parts for JY86:—			
A25/15C	. .	Bolt, 2BA	2	—	EA7/3
AGS2001C1/66	. .	Nut, 2BA	2	—	EA7/4
AS2811/5/089	. .	Tube, distance	2	L62	EA7/5
SP13C	. .	Washer	2	—	EA7/6
SMITH WAYMOUTH XA	. .	BRACKET, amplifier support	1	—	EA7/7
	. .	Attaching parts for XA:—			
AS1242/2C	. .	Bolt, 2BA	4	—	EA7/8
AGS2001C1/66	. .	Nut, 2BA	4	—	EA7/9
SP16C	. .	Washer	4	—	EA7/10
EA2.81.841	. .	BRACKET, angle, clip support	6	—	EA7/11
	. .	Attaching parts for EA2.81.841:—			
A25/1B	. .	Bolt, 4BA	1	—	EA7/12
AGS2001B1	. .	Nut, 4BA	1	—	EA7/13
SP15B	. .	Washer	1	—	EA7/14

R

## ELECTRICAL

## ELECTRICAL EQUIPMENT IN CENTRE FUSELAGE

Part Number	1 2 3 4 5 6	Description	No. Off	Matl. Spec.	Plate No.
AS3180/4B	. .	CLIP, 'P', rubber covered	5	-	EA7/15
AS3180/6B	. .	CLIP, 'P', rubber covered	1	-	EA7/16
A25/2B	. .	Bolt, 4BA	1	-	EA7/17
AGS2001B1	. .	Nut, 4BA	1	-	EA7/18
AS3180/7B	. .	CLIP, 'P', rubber covered	6	-	EA7/19
AS3180/8B	. .	CLIP, 'P', rubber covered	3	-	EA7/20
AS3180-14B	. .	CLIP, 'P', rubber covered	5	-	EA7/21
A25/1B	. .	Bolt, 4BA	1	-	EA7/22
AGS2001B1	. .	Nut, 4BA	1	-	EA7/23
SP15B	. .	Washer	1	-	EA7/24
AS3360B3C	. .	LEAD, bonding	1	-	EA7/25
A25/1B	. .	Bolt, 4BA	1	-	EA7/26
AGS2001B1	. .	Nut, 4BA	1	-	EA7/27
SP13B	. .	Washer	1	-	EA7/28
AS3360C6C	. .	LEAD, bonding	1	-	EA7/29
A25/1C	. .	Bolt, 2BA	1	-	EA7/30
AGS2001C1/66	. .	Nut, 2BA	1	-	EA7/31
SP13C	. .	Washer	1	-	EA7/32
EEAS73	. .	PLATE, clamp, strap	6	L72	EA7/33
EEAS132/7	. .	STRAP, cable, c/w buckle, 7" long	3	-	EA7/34
EEAS132/9	. .	STRAP, cable, c/w buckle, 9" long	3	-	EA7/35
AS1248/2B	. .	Bolt, 4BA	1	-	EA7/36
AGS2001B1	. .	Nut, 4BA	1	-	EA7/37
HELLERMANN HV3254	. .	STRAP, 3" wide	QR	-	
HELLERMANN NY3255	. .	STUD	5	-	
EB7.81.921	. .	EQUIPMENT, WIRING AND ELECTRICAL, BETWEEN FRAMES 27-28	-	-	
703-1-00238	. .	BLOCK, terminal, 5 way	1	-	EA8/1
AS1246/5B	. .	Bolt, 4BA	2	-	EA8/2
EA2.81.841	. .	BRACKET, angle	2	-	EA8/3
A25/1B	. .	Bolt, 4BA	1	-	EA8/4
AGS2001B1	. .	Nut, 4BA	1	-	EA8/5
SP13B	. .	Washer	1	-	EA8/6
AS3180/3B	. .	CLIP, 'P', rubber covered	7	-	EA8/7
AS3180/4B	. .	CLIP, 'P', rubber covered	10	-	EA8/8
AS3180/5B	. .	CLIP, 'P', rubber covered	1	-	EA8/9
A25/1B	. .	Bolt, 4BA	1	-	EA8/10
A25/2B	. .	Bolt, 4BA (For one AS3180/4B, clip)	1	-	EA8/11
AGS2001B1	. .	Nut, 4BA	1	-	EA8/12
AGS2001B3	. .	Nut, 4BA (For one AS3180/4B, clip)	1	-	EA8/13

## ELECTRICAL

## ELECTRICAL EQUIPMENT IN CENTRE FUSELAGE

Part Number	Description	No. Off	Matl. Spec.	Plate No.
AS3180/7B	. . CLIP, 'P', rubber covered	2	—	EA8/14
AS3180/8B	. . CLIP, 'P', rubber covered	2	—	EA8/15
AS3180/14B	. . CLIP, 'P', rubber covered	3	—	EA8/16
	Attaching parts for AS3180, Clips:—			
A25/1B	. . Bolt, 4BA	1	—	EA8/17
AGS2001B1	. . Nut, 4BA	1	—	EA8/18
SP15B	. . Washer	1	—	EA8/19
EEAS146/12	. . SLEEVE	2	—	
EEAS132/7	. . STRAP, c/w buckle, port	1	—	EA8/20
EEAS132/9	. . STRAP, c/w buckle, starboard	1	—	EA8/21
	Attaching parts for EEAS132/7 and EEAS132/9:—			
AS1248/3B	. . Bolt, 4BA	1	—	EA8/22
AGS2001B1	. . Nut, 4BA	1	—	EA8/23
EEAS73	. . Plate, clamping	1	—	EA8/24
HELLERMANN HV3254	. . STRAP	QR	—	
HELLERMANN NY3255	. . STUD	11	—	
EB7.81.937	. . . . EQUIPMENT, WIRING AND ELECTRICAL— BETWEEN FRAMES 28-29 Spares for:—	—	—	
EA2.81.841	. . BRACKET, angle Attaching parts for EA2.81.841:—	2	—	EA8/25
A25/1B	. . Bolt, 4BA	1	—	EA8/26
AGS2001B1	. . Nut, 4BA	1	—	EA8/27
SP15B	. . Washer	1	—	EA8/28
AS3180/3B	. . CLIP, 'P', rubber covered Attaching parts for AS3180/3B:—	5	—	EA8/29
A25/1B	. . Bolt, 4BA	1	—	EA8/30
AGS2001B1	. . Nut, 4BA	1	—	EA8/31
AS3180/8B	. . CLIP, 'P', rubber covered	3	—	EA8/32
AS3180/14B	. . CLIP, 'P', rubber covered	2	—	EA8/33
	Attaching parts for AS3180, Clips:—			
A25/1B	. . Bolt, 4BA	1	—	EA8/34
AGS2001B1	. . Nut, 4BA	1	—	EA8/35
SP15B	. . Washer	1	—	EA8/36
508-1-40180-320	. . CONNECTOR, bulkhead, plug/socket	1	—	
508-1-40181-320	. . CONNECTOR, bulkhead, plug/socket	1	—	
CZ62276/5	. . CONNECTOR, bulkhead, plug/socket	1	—	
508-1-40163-320	. . CONNECTOR, bulkhead, socket/plug	1	—	
508-1-40163-321	. . CONNECTOR, bulkhead, socket/plug	1	—	
EB7.82.5013	. . FAIRLEAD, half Attaching parts for EB7.82.5013:—	2	—	EA8/37
A25/3B	. . Bolt, 4BA	2	—	EA8/38
AGS2001B1	. . Nut, 4BA	2	—	EA8/39
SP15B	. . Washer	2	—	EA8/40
EA2.81.185	. . FAIRLEAD, half Attaching parts for EA2.81.185:—	2	—	EA8/41
AGS2001B1	. . Nut, 4BA	3	—	EA8/42
A32B20	. . Screw, 4BA	3	—	EA8/43

## ELECTRICAL

## ELECTRICAL EQUIPMENT IN CENTRE FUSELAGE

Part Number	Description	No. Off	Matl. Spec.	Plate No.
R L1023	. . FILAMENT, 28 volt, 7 watt	1	—	
R E&I2398	. . LAMP, cockpit, Mk. 1A	1	—	EA8/44
R A32B16	. . Attaching parts for E&I2398 . . Screw, 4BA	3	—	EA8/45
508-1-06454	. . PLUG, bulkhead, 4 way	1	—	EA8/46
508-1-06451	. . PLUG, bulkhead, 12 way	1	—	EA8/47
508-1-06452	. . PLUG, bulkhead, 14 way	1	—	EA8/48
508-1-06459	. . PLUG, bulkhead, 26 way	1	—	EA8/49
R WTA601115RAE	. . PLUG, bulkhead . . Attaching parts for WTA601115RAE	1	—	EA8/50
R AGS2001B1	. . Nut, 4BA	4	—	EA8/51
A32B16	. . Screw, 4BA	4	—	EA8/52
R 10H/0560042	. . SOCKET	2	—	EA8/53
EEAS132/9	. . STRAP, c/w buckle . . Attaching parts for EEAS132/9:—	1	—	EA8/54
AS1248/3B	. . Bolt, 4BA	1	—	EA8/55
AGS2001B1	. . Nut, 4BA	1	—	EA8/56
EEAS73	. . Plate, clamping	1	—	EA8/57
HELLERMANN HY3254	. . STRAP	QR	—	
HELLERMANN NY3255	. . STUD	2	—	
EB7.81.919	. EQUIPMENT, WIRING AND ELECTRICAL, BETWEEN FRAMES 29-31 Spares for:—	—	—	
EA3.81.1829	. . BAG, stowage . . Attaching parts for EA3.81.1829:—	2	—	EA9/1
AS1248/1/2B	. . Bolt, 4BA	3	—	EA9/2
AGS2001B1	. . Nut, 4BA	3	—	EA9/3
EB7.81.927	. . BOX, JUNCTION No. 5 Spares for:—	1	—	EA9/4
PLESSEY 703-1-00249	. . . BLOCK, terminal . . . Attaching parts for 703-1-00249:—	2	—	EA9/5
A43B24	. . . Screw, cheese head, 4BA	2	—	EA9/6
EA1.81.583	. . . BOX, junction 40 way	1	—	EA9/7
EB7.81.935	. . . COVER ASSEMBLY Spares for:—	1	—	EA9/8
EEAS117/1	. . . . SCREW, cover	6	S92	EA9/9
EEAS28/2CU	. . . . WASHER	12	DTD124	EA9/10
EEAS42	. . . . WASHER	6	Leather	
PLESSEY 508-4-11290-004	. . . GASKET	2	—	
508-4-11290-005	. . . GASKET	2	—	
—	. . . LINK, connecting, 3 way	1	—	
EA1.81.463	. . . PLATE, blanking	2	—	EA9/11
EA1.81.461	. . . PLATE, blanking . . . Attaching parts for EA1.81.463 and EA1.81.461:—	1	—	EA9/12
A27AP	. . . Nut, 6BA	4	—	EA9/13
A32A12	. . . Screw, round head, 6BA	4	—	EA9/14
SP47A	. . . Washer, 6BA	4	—	EA9/15

## ELECTRICAL

## ELECTRICAL EQUIPMENT IN CENTRE FUSELAGE

Part Number	Description	No. Off	Matl. Spec.	Plate No.
508-1-06413	. . . PLUG, 26 way, size 'D'	1	-	
EEAS146B	. . . SLEEVE, $\frac{3}{8}$ " long, yellow	20	-	
EEAS146A	. . . SLEEVE, $\frac{3}{4}$ " long, yellow	18	-	
503-2-11232-002	. . . SLEEVE	18	-	
703-2-00315-020	. . . TAG	18	-	
703-2-00339-020	. . . THIMBLE	18	-	
	Attaching parts for EB7.81.927:-			
AGS2001C1/66	. . Nut, 2BA	4	-	EA9/17
A32C16	. . Screw, 2BA	4	-	EA9/18
EA2.81.841	. . BRACKET	2	-	EA9/19
	Attaching parts for EA2.81.841:-			
A25/1B	. . Bolt, 4BA	1	-	EA9/20
AGS2001B1	. . Nut, 4BA	1	-	EA9/21
SP15B	. . Washer	1	-	EA9/22
EA1.81.252	. . BRACKET	1	-	EA9/23
EA2.81.765	. . BRACKET, centre camera bay light	1	-	EA9/24
AS3180/3B	. . CLIP, 'P', rubber covered	9	-	EA9/25
AS3180/8B	. . CLIP, 'P', rubber covered	8	-	EA9/26
AS3180/9B	. . CLIP, 'P', rubber covered	2	-	EA9/27
	Attaching parts for AS3180 clips:-			
AGS2001B1	. . Nut, 4BA	1	-	EA9/28
A32B12	. . Screw, 4BA	1	-	EA9/29
AS3180/14B	. . CLIP	3	-	EA9/30
	Attaching parts for AS3180/14B:-			
A25/1B	. . Bolt, 4BA	1	-	EA9/31
AGS2001B1	. . Nut, 4BA	1	-	EA9/32
SP15B	. . Washer, 4BA	1	-	EA9/33
AS3180/18C	. . CLIP, 'P', rubber covered	2	-	EA9/34
	Attaching parts for AS3180/18C:-			
AGS2001C1/66	. . Nut, 2BA	1	-	EA9/35
A32C16	. . Screw, 2BA	1	-	EA9/36
AS493/16	. . CLIP, 'P', rubber covered	2	-	EA9/37
	Attaching parts for AS493/16:-			
AGS2001B1	. . Nut, 2BA	1	-	EA9/38
A32C16	. . Screw, round head, 2BA	1	-	EA9/39
L1023	. . FILAMENT, 28 volt, 7 watt	1	-	EA9/40
E&I2398	. . LAMP, cockpit Mk. 1A	1	-	EA9/41
	Attaching parts for E&I2398			
A32B16	. . Screw, 4BA	3	-	EA9/42
EEAS132/7	. . STRAP, c/w buckle	1	-	EA9/43
	Attaching parts for EEAS132/7:-			
AS1248/3B	. . Bolt, 4BA	1	-	EA9/44
AGS2001B1	. . Nut, 4BA	1	-	EA9/45
EEAS73	. . Washer	1	-	EA9/46
HELLERMANN				
HV3254	. . STRAP, $\frac{5}{16}$ " wide	QR	-	
HV3341	. . STRAP, $\frac{1}{2}$ " wide	QR	-	
HY3255	. . STUD	18	-	
HY3342	. . STUD	18	-	
BURGESS				
TYPE 1A	. . SWITCH	1	-	EA9/47
	Attaching parts for Type 1A:-			
A25/8B	. . Bolt, 4BA	2	-	EA9/48
AGS2001B1	. . Nut, 4BA	2	-	EA9/49
EA1.81.460	. . Washer, plate	1	-	EA9/50

R  
R  
RR  
R

## ELECTRICAL

## ELECTRICAL EQUIPMENT IN CENTRE FUSELAGE

Part Number	Description	No. Off	Mati. Spec.	Plate No.
EA2.81.829	. EQUIPMENT, WIRING, TOP TANKS Spares for:—	—	—	
AS3180/4B	. . CLIP, 'P', rubber covered Attaching parts for AS3180/4B:—	25	—	EA2/30A
AGS2001B1	. . Nut, 4BA	1	—	EA2/31
A31B16	. . Screw, 4BA	1	—	EA2/32
EA2.81.831	. EQUIPMENT, WIRING TRANSMITTER CABLE TANK UNIT Spares for:—	—	—	
EA2.81.841	. . BRACKET, cable clip Attaching parts for EA2.81.841:—	1	—	EA2/33
A25/1/2B	. . Bolt, 4BA	1	—	EA2/34
AGS2001B1	. . Nut, 4BA	1	—	EA2/35
AS3180/4B	. . CLIP, 'P', rubber covered Attaching parts for AS3180/4B:—	3	—	EA2/36
AGS2001B1	. . Nut, 4BA	1	—	EA2/37
A31B12	. . Screw, 4BA	1	—	EA2/38
EB7.81.5521	. EQUIPMENT, WIRING D.C. SUPPLIES Spares for:—	—	—	
AS3180/5B	. . CLIP, 'P', rubber covered	31	—	EA2/39
AS3180/8B	. . CLIP, 'P', rubber covered Attaching parts for AS3180 clips:—	4	—	EA2/40
A25/1B	. . Bolt, 4BA	1	—	EA2/41
AGS2001B1	. . Nut, 4BA	1	—	EA2/42
SP15B	. . Washer	1	—	EA2/43
EA2.81.5605	. LAMP, ANTI-COLLISION, LOWER FLASHING INSTALLATION AT FRAME 21 (MOD 3356) Spares for:—	—	—	
EA2.81.5625	. . ANGLE	1	—	EA10/1
EA2.81.5659	. . ANGLE	1	—	EA10/2
EA9.81.5661	. . ANGLE	1	—	EA10/3
EA2.81.5619	. . COVER, dished Attaching parts for EA2.81,5619:—	1	S511	EA10/4
EEAS1/2C	. . Screw, 2BA	16	—	EA10/5
EA2.81.5621	. . DOOR, lamp support	1	L72	EA10/6
5L9952445	. . FILAMENT, 28 volt 40 watt	1	—	EA10/7
EA2.81.5607	. . FRAME, door	1	—	EA10/8
SP93A10	. . GROMMET	1	—	EA10/9
5CX/5315	. . LAMP, Type FNL50	1	—	EA10/10
EA2.81.5617	. . RING, packing lamp	1	—	EA10/11
A31A16	. . SCREW	2	—	EA10/12
EA2.81.5616	. . SEAL, rubber	1	H26	EA10/13
EA2.81.5629	. . STRIP, packing	1	—	EA10/14
EA2.81.5631	. . STRIP, packing	1	—	EA10/15
EA2.81.5633	. . STRIP, packing	1	—	EA10/16
SP47A	. . WASHER	2	—	EA10/17

R  
R  
R

## ELECTRICAL

## ELECTRICAL EQUIPMENT IN CENTRE FUSELAGE

Part Number	Description	No. Off	Matl. Spec.	Plate No.
EB7.81.35	. LOOMS, CABLE, ASSEMBLY Spares for:—	—	—	
EA2.81.221/2	. . CABLE, ASSEMBLY, C1, from distribution box to J.B.1	1	—	
EA2.81.222/2	. . CABLE, ASSEMBLY, C1X, from pressure bulkhead to J.B.1	1	—	
EA2.81.225	. . CABLE, ASSEMBLY, C4, from pressure bulkhead to J.B.4	1	—	
EA2.81.226/2	. . CABLE, ASSEMBLY, C5, from pressure bulkhead to J.B.5	1	—	
EA2.81.228/2	. . CABLE, ASSEMBLY, C7, from distribution box to J.B.7	1	—	
EA2.81.237/2	. . CABLE, ASSEMBLY, C41, from pressure bulkhead to rear flare bay bulkhead	1	—	
EA2.81.244	. . CABLE, ASSEMBLY, 1B, from J.B.1 to flare door terminal board	1	—	
EA2.81.245/2	. . CABLE, ASSEMBLY, 1C, from J.B.1 to camera door valve actuator	1	—	
EA2.81.246/2	. . CABLE, ASSEMBLY, 1D, from J.B.1 to undercarriage valve actuator	1	—	
EA2.81.248/2	. . CABLE, ASSEMBLY, 1G, from J.B.1 to flap transmitter	1	—	
EA2.81.249/2	. . CABLE, ASSEMBLY, 1H, 1K from J.B.1 to plug bracket on ventral tank, port and fuel cock actuator	1	—	
EA2.81.250/2	. . CABLE, ASSEMBLY, 1J from J.B.1 to fuel cock actuator aft tank	1	—	
EA2.81.254	. . CABLE, ASSEMBLY, 1R, 1S from J.B.1 to flare door micro switches	1	—	
EA2.81.261	. . CABLE, ASSEMBLY, 3D, from J.B.3 to flare door valve actuator terminal board	1	—	
EA2.81.262/2	. . CABLE, ASSEMBLY, 3D1, from terminal board to flare door valve actuator	1	—	
EA2.81.263/2	. . CABLE, ASSEMBLY, 3F, from J.B.3 to flap valve actuator	1	—	
EA2.81.264/2	. . CABLE, ASSEMBLY, 3H, 3K, from J.B.3 to fuel cock actuator and plug bracket on ventral tank starboard	1	—	
EA2.81.265/2	. . CABLE, ASSEMBLY, 3J, from J.B.3 to fuel cock, port	1	—	
EA2.81.269	. . CABLE, ASSEMBLY, 3M, from J.B.3 to fuel contents gauge transmitter, upper tank	1	—	
EA2.81.270	. . CABLE, ASSEMBLY, 3N, from J.B.3 to fuel transmitter, ventral tank	1	—	
EA2.81.271	. . CABLE, ASSEMBLY, 3P, from J.B.3 to fuel contents gauge transmitter, rear tank	1	—	
EA2.81.281	. . CABLE, ASSEMBLY, 4A, from J.B.4 to F.52 Camera (Forward Port)	1	—	
EA2.81.278	. . CABLE, ASSEMBLY, 4B, from J.B.4 to F.52 Camera (Centre Port)	1	—	
EA2.81.283	. . CABLE, ASSEMBLY, 4C, from J.B.4 to F.52 Camera (Forward Port)	1	—	
EA2.81.280	. . CABLE, ASSEMBLY, 4D, from J.B.4 to F.52 Camera (Centre Starboard)	1	—	
EA2.81.284	. . CABLE, ASSEMBLY, 5A, from J.B.5 to F.52 Camera (Aft Port)	1	—	

## ELECTRICAL

## ELECTRICAL EQUIPMENT IN CENTRE FUSELAGE

Part Number	Description	No. Off	Mati. Spec.	Plate No.
EA2.81.285	. . CABLE, ASSEMBLY, 5B, from J.B.5 to F.52 Camera (Aft Starboard)	1	-	
EA2.81.5111	. . CABLE, ASSEMBLY, 5D, from J.B.5 to Camera Door Micro Switch	1	-	
EA2.81.293/2	. . CABLE, ASSEMBLY, 1M, from J.B.1 to fuel cock actuator	1	-	
EB7.81.553/2	. . CABLE, ASSEMBLY, 3A1, from terminal board to vent valve heater port	1	-	
EB7.81.555	. . CABLE, ASSEMBLY, 3A2, from terminal board to vent valve heater starboard	1	-	
EA2.81.581/2	. . CABLE, ASSEMBLY, 3Q, from J.B.3 to plug break flare beam, starboard	1	-	
EA2.81.584	. . CABLE, ASSEMBLY, 1Q, from J.B.1 to plug break flare beam, port (Pre-Mod 3381)	1	-	
EA2.81.584/2	. . CABLE, ASSEMBLY, 1Q, from J.B.1 to plug break flare beam, port (Mod 3381)	1	-	
EB7.81.609/2	. . CABLE, ASSEMBLY, C3X, from pressure bulkhead to J.B.3	1	-	
EB7.81.611/2	. . CABLE, ASSEMBLY, C7X, from pressure bulkhead to J.B.7	1	-	
EB7.81.615/2	. . CABLE, ASSEMBLY, C9, from distribution box, to port wing break	1	-	
EB7.81.617/2	. . CABLE, ASSEMBLY, C10, from distribution box to starboard wing break	1	-	
EB7.81.623	. . CABLE, ASSEMBLY, C33, from main electrical panel to rear flare bay bulkhead	1	-	
EA2.81.774	. . CABLE, ASSEMBLY, 6H2, from centre camera bay lamp to terminal board in rear camera bay	1	-	
EB7.81.2565	. . CABLE, ASSEMBLY, 4F, from J.B.4 to feeds for camera bay and flare bay lights (Mod 1038)	1	-	
EA2.81.945/2	. . CABLE, ASSEMBLY, 3L1, from suppressor to fuel pump, rear tank	1	-	
EA2.81.947/2	. . CABLE, ASSEMBLY, 1F and 1T, from J.B.1 to air break actuator and solenoid valves	1	-	
EA2.81.1013	. . CABLE, ASSEMBLY, 1L from J.B.1 to suppressor rear tank	1	-	
EA2.81.1015/2	. . CABLE, ASSEMBLY, 1L1, from suppressor to fuel pump, rear tank	1	-	
EA2.81.1017	. . CABLE, ASSEMBLY, 3L, from J.B.3 to starboard fuel pump suppressor rear tank	1	-	
EB7.81.1369	. . CABLE, ASSEMBLY, 3A and 3B, from J.B.3 to fire extinguisher and ventral heaters	1	-	
EB7.81.1117	. . CABLE, ASSEMBLY, 3R and 3S, from J.B.3 to port and starboard flare door micro switches	1	-	
EB7.81.5809	. . CABLE, ASSEMBLY, 1N and E1, from J.B.1 to main electrical panel fatigue meter fuse, earth and fatigue meter (Mod 3883) (Pre-Mod 5099)	1	-	

## ELECTRICAL

## ELECTRICAL EQUIPMENT IN CENTRE FUSELAGE

Part Number	Description	No. Off	Matl. Spec.	Plate No.
EB7.81.6673	. . CABLE, ASSEMBLY, 1N and E1, from J.B.1 to main electrical panel fatigue meter fuse, earth and fatigue meter (Alt. R60/67-Mod 5099)	-	-	
EB7.81.1121	. . CABLE, ASSEMBLY, E3, earth connection for J.B.3 (Pre-Mod 5099)	1	-	
R EB7.81.6193	. . CABLE, ASSEMBLY, E3, earth connection for J.B.3 (Alt. R60/67-Mod 5099)	1	-	
EB7.81.1123	. . CABLE, ASSEMBLY, E4, earth connection for J.B.4 (Pre-Mod 5099)	1	-	
EB7.81.6675	. . CABLE, ASSEMBLY, E4, earth connection for J.B.4 (Alt. R60/67-Mod 5099)	1	-	
EB7.81.1125	. . CABLE, ASSEMBLY, E5, earth connection for J.B.5 (Pre-Mod 5099)	1	-	
R EB7.81.6195	. . CABLE, ASSEMBLY, E5, earth connection for J.B.5 (Alt. R60/67-Mod 5099)	1	-	
EB7.81.1749	. . CABLE, ASSEMBLY, 5C, from J.B.5 to survey camera (Mod 1049)	1	-	
EB7.81.1365/2	. . CABLE, ASSEMBLY, C3, from distribution box to J.B.3	1	-	
EA4.81.1367/2	. . CABLE, ASSEMBLY, C6, from distribution box to rear flare bay bulkhead	1	-	
EB7.81.5493	. . CABLE, ASSEMBLY, C31, from connection on port wing leading edge diaphragm to main electrical panel (Mod 3235)	1	-	
EB7.81.5497	. . CABLE, ASSEMBLY, C32, from main electrical panel cut-out to starboard wing break (Mod 3235)	1	-	
EB7.81.1473/2	. . CABLE, ASSEMBLY, C8X, from pressure bulkhead to J.B.8	1	-	
EB7.81.1475/2	. . CABLE, ASSEMBLY, C8, from distribution box to J.B.8	1	-	
EB7.81.5483	. . CABLE, ASSEMBLY, C35, from main electrical panel to voltage regulator and to No. 1 generator (Mod 3235)	1	-	
EB7.81.5477	. . CABLE, ASSEMBLY, C36, from main electrical panel to voltage regulator, and to No. 2 generator (Mod 3235)	1	-	
EB7.81.5479	. . CABLE, ASSEMBLY, C37, from port voltage regulator to No. 1 overvolt relay main electrical panel (Mod 3235)	1	-	
EB7.81.5481	. . CABLE, ASSEMBLY, C38, from starboard voltage regulator to No. 2 overvolt relay main electrical panel (Mod 3235)	1	-	
EB7.81.7255	. . CABLE, ASSEMBLY, C419, from heavy duty TB, U.H.F. equipment panel to in-line splice at frame 12 (Mod 5022)	1	-	
EB7.81.3161	. . CABLE, ASSEMBLY, C71, from I.F.F., J.B., to plug bracket at frame 11, starboard above door frame (Mod 3235)	1	-	
EB7.81.3077	. . CABLE, ASSEMBLY, 3W/1, from J.B.3 to rear detectors (Mod 4073)	1	-	
R EB7.81.3083	. . CABLE, ASSEMBLY, XX92, between 3 way terminal blocks (Mod 4073)	1	-	
R EB7.81.3085	. . CABLE, ASSEMBLY, E3, from J.B.3 to indicator fuse (Mod 4073)	1	-	

## ELECTRICAL EQUIPMENT IN CENTRE FUSELAGE

Part Number	Description	No. Off	Matl. Spec.	Plate No.
EB7.81.6705	. . CABLE, ASSEMBLY, C3XX, from distribution box to relay box (Alt. R60/60-Mod 5099)	1	-	
EB7.81.3201	. . CABLE, ASSEMBLY, 3XY, from test socket explosion protection to switch (Mod 3302) (Pre-Mod 5099)	1	-	
EB7.81.6707	. . CABLE, ASSEMBLY, 3XY, from test socket explosive protection to switch (Alt. R60/60-Mod 5099)	1	-	
EB7.81.3203	. . CABLE, ASSEMBLY, 3XX, from switch explosion protection to indicator fuse (Mod 3302) (Pre-Mod 5099)	1	-	
EB7.81.6709	. . CABLE, ASSEMBLY, 3XX, from switch explosion protection to indicator fuse (Alt. R60/60-Mod 5099)	1	-	
EB8.81.2243	. . CABLE, ASSEMBLY, ES1, from plug bracket on tank to fuse indicator (Mod 2000)	1	-	
EB7.81.3205	. . CABLE, ASSEMBLY, 3Z, from relay box explosion protection to relay and switch (Mod 3302) (Pre-Mod 5099)	1	-	
EB7.81.6711	. . CABLE, ASSEMBLY, 3Z, from relay box explosion protection to relay and switch (Alt. R60/60-Mod 5099)	1	-	
EA2.81.5025	. . CABLE, ASSEMBLY, C214	1	-	
EA2.81.5017	. . CABLE, ASSEMBLY, C224	1	-	
EA2.81.5019	. . CABLE, ASSEMBLY, C225	1	-	
EA2.81.5039	. . CABLE, ASSEMBLY, C212	1	-	
EA2.81.5047	. . CABLE, ASSEMBLY, C226	1	-	
EA2.81.5049	. . CABLE, ASSEMBLY, C227	1	-	
EA2.81.5051	. . CABLE, ASSEMBLY, C231	1	-	
EA2.81.5063	. . CABLE, ASSEMBLY, 3X	1	-	
EA2.81.5067	. . CABLE, ASSEMBLY, 3V	1	-	
EA2.81.5069	. . CABLE, ASSEMBLY, 5G	1	-	
EA2.81.5071	. . CABLE, ASSEMBLY, 5J	1	-	
EA2.81.5075	. . CABLE, ASSEMBLY, 5H	1	-	
EB7.81.5733	. . CABLE, ASSEMBLY, C213	1	-	
EB7.81.5737	. . CABLE, ASSEMBLY, C453	1	-	
EB7.81.6047	. . CABLE, ASSEMBLY, 3WA	1	-	
EB7.81.6049	. . CABLE, ASSEMBLY, 3WB	1	-	
EB7.81.6051	. . CABLE, ASSEMBLY, 3Y	1	-	
EB7.81.6053	. . CABLE, ASSEMBLY, C463	1	-	
EB7.81.7355	. . CABLE, ASSEMBLY, F450 (Mod 5500)	1	-	
SMITH				
WAYMOUTH				
CA14	. . CONNECTOR	1	-	
CA18	. . CONNECTOR (Pre-Mod 3853)	3	-	
CA18	. . CONNECTOR (Mod 3853)	2	-	
CA26	. . CONNECTOR (Mod 3853)	1	-	
CA38	. . CONNECTOR	3	-	
CA72	. . CONNECTOR	1	-	
Z22634	. . GROMMET, dummy	2	-	
No.4	. . LEAD, electrical camera control	6	-	
EB7.81.45	. LOOMS, CABLE, INSTRUMENT Consisting of:-	-	-	
EB7.81.541	. . CABLE, ASSEMBLY, AU1A-AU1, from connection at pressure bulkhead to A.M.U. Mk. 4	1	-	
EB7.81.543	. . CABLE, ASSEMBLY, AU2A-AU2, from connection at pressure bulkhead to wing root connection	1	-	

## ELECTRICAL

## ELECTRICAL EQUIPMENT IN CENTRE FUSELAGE

Part Number	1 2 3 4 5 6	Description	No. Off	Matl. Spec.	Plate No.
EB7.81.6673		. . CABLE, ASSEMBLY, 1N and E1, from J.B.1 to main electrical panel fatigue meter fuse, earth and fatigue meter (Alt. R60/67-Mod 5099)	-	-	
EB7.81.1121		. . CABLE, ASSEMBLY, E3, earth connection for J.B.3 (Pre-Mod 5099)	1	-	
R EB7.81.6193		. . CABLE, ASSEMBLY, E3, earth connection for J.B.3 (Alt. R60/67-Mod 5099)	1	-	
EB7.81.1123		. . CABLE, ASSEMBLY, E4, earth connection for J.B.4 (Pre-Mod 5099)	1	-	
EB7.81.6675		. . CABLE, ASSEMBLY, E4, earth connection for J.B.4 (Alt. R60/67-Mod 5099)	1	-	
EB7.81.1125		. . CABLE, ASSEMBLY, E5, earth connection for J.B.5 (Pre-Mod 5099)	1	-	
R EB7.81.6195		. . CABLE, ASSEMBLY, E5, earth connection for J.B.5 (Alt. R60/67-Mod 5099)	1	-	
EB7.81.1749		. . CABLE, ASSEMBLY, 5C, from J.B.5 to survey camera (Mod 1049)	1	-	
EB7.81.1365/2		. . CABLE, ASSEMBLY, C3, from distribution box to J.B.3	1	-	
EA4.81.1367/2		. . CABLE, ASSEMBLY, C6, from distribution box to rear flare bay bulkhead	1	-	
EB7.81.5493		. . CABLE, ASSEMBLY, C31, from connection on port wing leading edge diaphragm to main electrical panel (Mod 3235)	1	-	
EB7.81.5497		. . CABLE, ASSEMBLY, C32, from main electrical panel cut-out to starboard wing break (Mod 3235)	1	-	
EB7.81.1473/2		. . CABLE, ASSEMBLY, C8X, from pressure bulkhead to J.B.8	1	-	
EB7.81.1475/2		. . CABLE, ASSEMBLY, C8, from distribution box to J.B.8	1	-	
EB7.81.5483		. . CABLE, ASSEMBLY, C35, from main electrical panel to voltage regulator and to No. 1 generator (Mod 3235)	1	-	
EB7.81.5477		. . CABLE, ASSEMBLY, C36, from main electrical panel to voltage regulator, and to No. 2 generator (Mod 3235)	1	-	
EB7.81.5479		. . CABLE, ASSEMBLY, C37, from port voltage regulator to No. 1 overvolt relay main electrical panel (Mod 3235)	1	-	
EB7.81.5481		. . CABLE, ASSEMBLY, C38, from starboard voltage regulator to No. 2 overvolt relay main electrical panel (Mod 3235)	1	-	
EB7.81.7255		. . CABLE, ASSEMBLY, C419, from heavy duty TB, U.H.F. equipment panel to in-line splice at frame 12 (Mod 5022)	1	-	
EB7.81.3161		. . CABLE, ASSEMBLY, C71, from I.F.F., J.B., to plug bracket at frame 11, starboard above door frame (Mod 3235)	1	-	
EB7.81.3077		. . CABLE, ASSEMBLY, 3W/1, from J.B.3 to rear detectors (Mod 4073)	1	-	
R EB7.81.3083		. . CABLE, ASSEMBLY, XX92, between 3 way terminal blocks (Mod 4073)	1	-	
R EB7.81.3085		. . CABLE, ASSEMBLY, E3, from J.B.3 to indicator fuse (Mod 4073)	1	-	

## ELECTRICAL

## ELECTRICAL EQUIPMENT IN CENTRE FUSELAGE

Part Number	Description	No. Off	Matl. Spec.	Plate No.
R EB7.81.6705	. . CABLE, ASSEMBLY, C3XX, from distribution box to relay box (Alt. R60/60-Mod 5099)	1	-	
EB7.81.3201	. . CABLE, ASSEMBLY, 3XY, from test socket explosion protection to switch (Mod 3302) (Pre-Mod 5099)	1	-	
EB7.81.6707	. . CABLE, ASSEMBLY, 3XY, from test socket explosive protection to switch (Alt. R60/60-Mod 5099)	1	-	
EB7.81.3203	. . CABLE, ASSEMBLY, 3XX, from switch explosion protection to indicator fuse (Mod 3302) (Pre-Mod 5099)	1	-	
EB7.81.6709	. . CABLE, ASSEMBLY, 3XX, from switch explosion protection to indicator fuse (Alt. R60/60-Mod 5099)	1	-	
EB8.81.2243	. . CABLE, ASSEMBLY, ES1, from plug bracket on tank to fuse indicator (Mod 2000)	1	-	
EB7.81.3205	. . CABLE, ASSEMBLY, 3Z, from relay box explosion protection to relay and switch (Mod 3302) (Pre-Mod 5099)	1	-	
EB7.81.6711	. . CABLE, ASSEMBLY, 3Z, from relay box explosion protection to relay and switch (Alt. R60/60-Mod 5099)	1	-	
R EA2.81.5025	. . CABLE, ASSEMBLY, C214	1	-	
R EA2.81.5017	. . CABLE, ASSEMBLY, C224	1	-	
R EA2.81.5019	. . CABLE, ASSEMBLY, C225	1	-	
R EA2.81.5039	. . CABLE, ASSEMBLY, C212	1	-	
R EA2.81.5047	. . CABLE, ASSEMBLY, C226	1	-	
R EA2.81.5049	. . CABLE, ASSEMBLY, C227	1	-	
R EA2.81.5051	. . CABLE, ASSEMBLY, C231	1	-	
R EA2.81.5063	. . CABLE, ASSEMBLY, 3X	1	-	
R EA2.81.5067	. . CABLE, ASSEMBLY, 3V	1	-	
R EA2.81.5069	. . CABLE, ASSEMBLY, 5G	1	-	
R EA2.81.5071	. . CABLE, ASSEMBLY, 5J	1	-	
R EA2.81.5075	. . CABLE, ASSEMBLY, 5H	1	-	
R EB7.81.5733	. . CABLE, ASSEMBLY, C213	1	-	
R EB7.81.5737	. . CABLE, ASSEMBLY, C453	1	-	
R EB7.81.6047	. . CABLE, ASSEMBLY, 3WA	1	-	
R EB7.81.6049	. . CABLE, ASSEMBLY, 3WB	1	-	
R EB7.81.6051	. . CABLE, ASSEMBLY, 3Y	1	-	
R EB7.81.6053	. . CABLE, ASSEMBLY, C463	1	-	
SMITH				
WAYMOUTH				
CA14	. . CONNECTOR	1	-	
CA18	. . CONNECTOR (Pre-Mod 3853)	3	-	
CA18	. . CONNECTOR (Mod 3853)	2	-	
CA26	. . CONNECTOR (Mod 3853)	1	-	
CA38	. . CONNECTOR	3	-	
CA72	. . CONNECTOR	1	-	
R Z22634	. . GROMMET, dummy	2	-	
R No.4	. . LEAD, electrical camera control	6	-	
EB7.81.45	. LOOMS, CABLE, INSTRUMENT Consisting of:-	-	-	
EB7.81.541	. . CABLE, ASSEMBLY, AU1A-AU1, from connection at pressure bulkhead to A.M.U. Mk. 4	1	-	
EB7.81.543	. . CABLE, ASSEMBLY, AU2A-AU2, from connection at pressure bulkhead to wing root connection	1	-	

## ELECTRICAL

## ELECTRICAL EQUIPMENT IN CENTRE FUSELAGE

Part Number	Description	No. Off	Mati. Spec.	Plate No.
EB7.81.545	. . CABLE, ASSEMBLY, D1C-D1B, from connection at pressure bulkhead to wing root connection	1	-	
EB7.80.865	. . METER FATIGUE, BULKHEAD FRAME 21B, INSTALLATION (MOD 2506) Spares for:-	-	-	EA11/1
R 6A5029	. . METER, fatigue, Mk. 3C (Pre-Mod 3245)	1	-	EA11/2
R 6A4664238	. . METER, fatigue, Mk. 13 (Mod 3245) (Pre-Mod 4223)	1	-	
R 6A4327991	. . METER, fatigue, Mk. 16 (Mod 4223) Attaching parts for 6A/5029, 6A/4664238 and 6A/4327991:-	1	-	
A25/1C	. . Bolt, 2BA	4	-	EA11/3
SP15C	. . Washer	4	-	EA11/4
R EB7.80.867	. . MOUNTING Attaching parts for EB7.80.867:-	1	-	EA11/4A
A25/1C	. . Bolt, 2BA	4	-	EA11/5
EB7.80.869	. . TOP HAT, assembly	1	-	EA11/6
EB7.80.873	. . TOP HAT, assembly Attaching parts for EB7.80.869 and EB7.80.873:-	1	-	EA11/7
A25/1C	. . Bolt, 2BA	4	-	EA11/8
AGS2001C1/66	. . Nut	4	-	EA11/9
SP15C	. . Washer	4	-	EA11/10

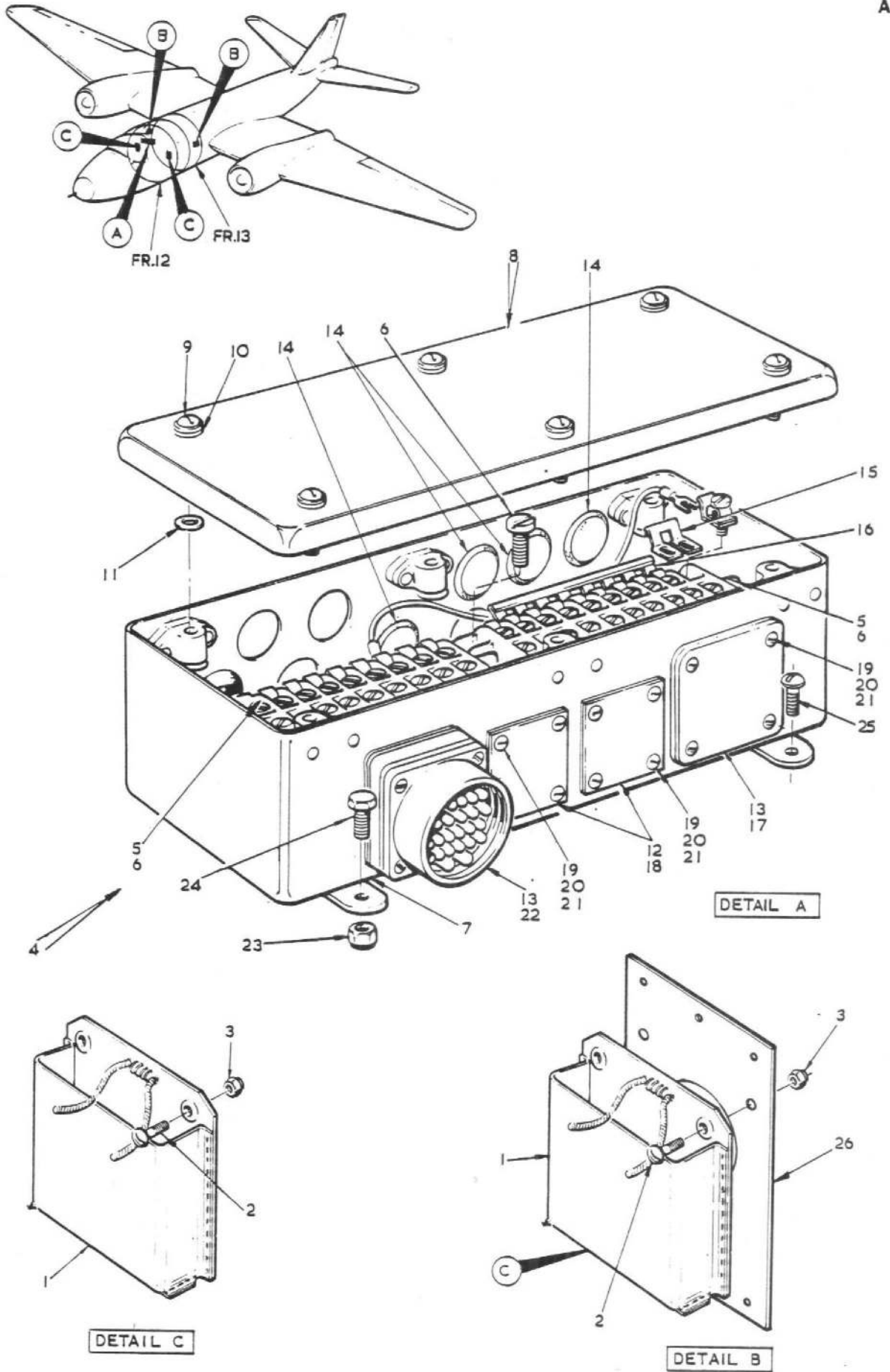


FIG. 1 ELECTRICAL EQUIPMENT IN CENTRE FUSELAGE

CODE T

SECT. EA

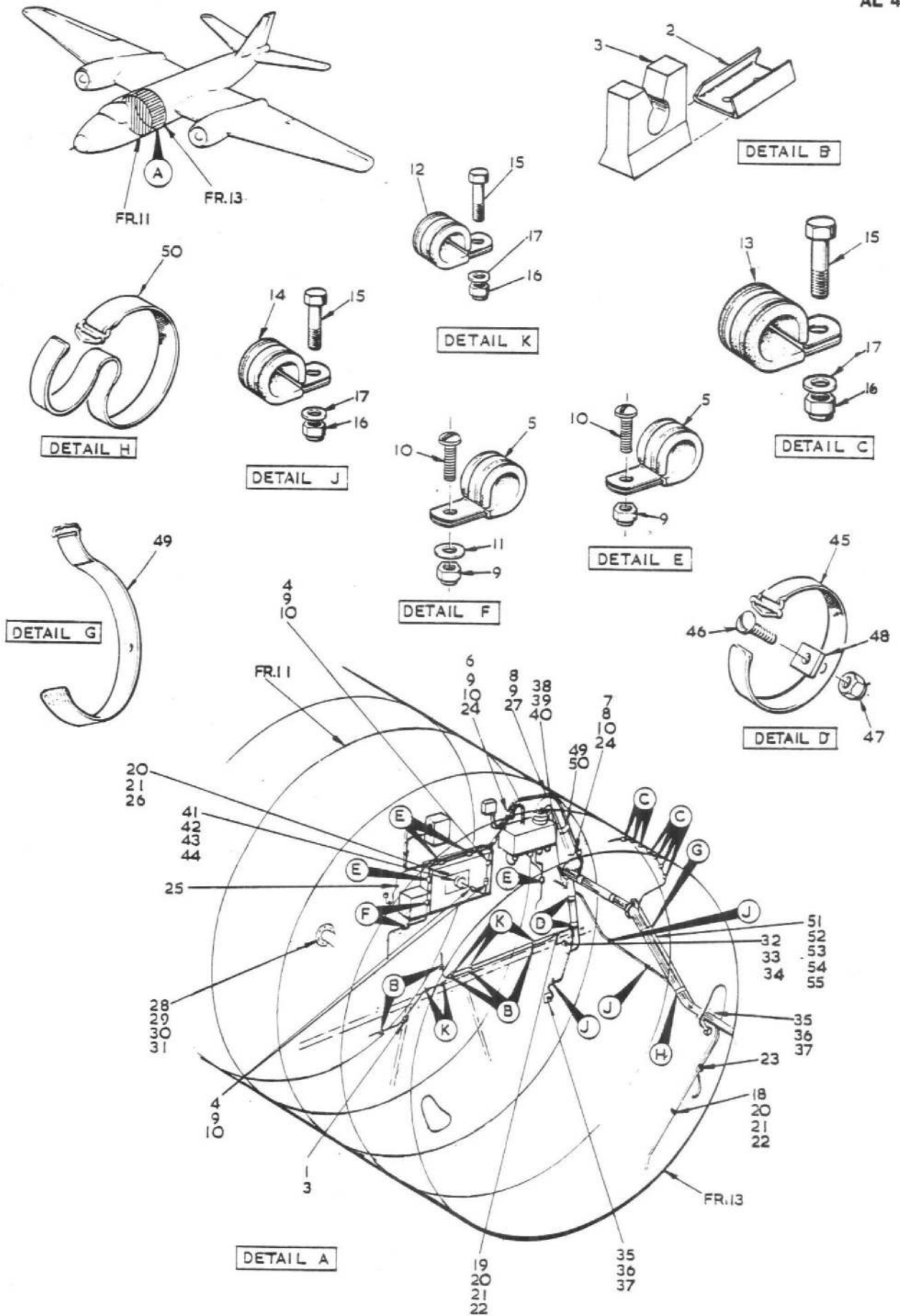


FIG. 1A ELECTRICAL EQUIPMENT IN CENTRE FUSELAGE

CODE T

SECT. EA

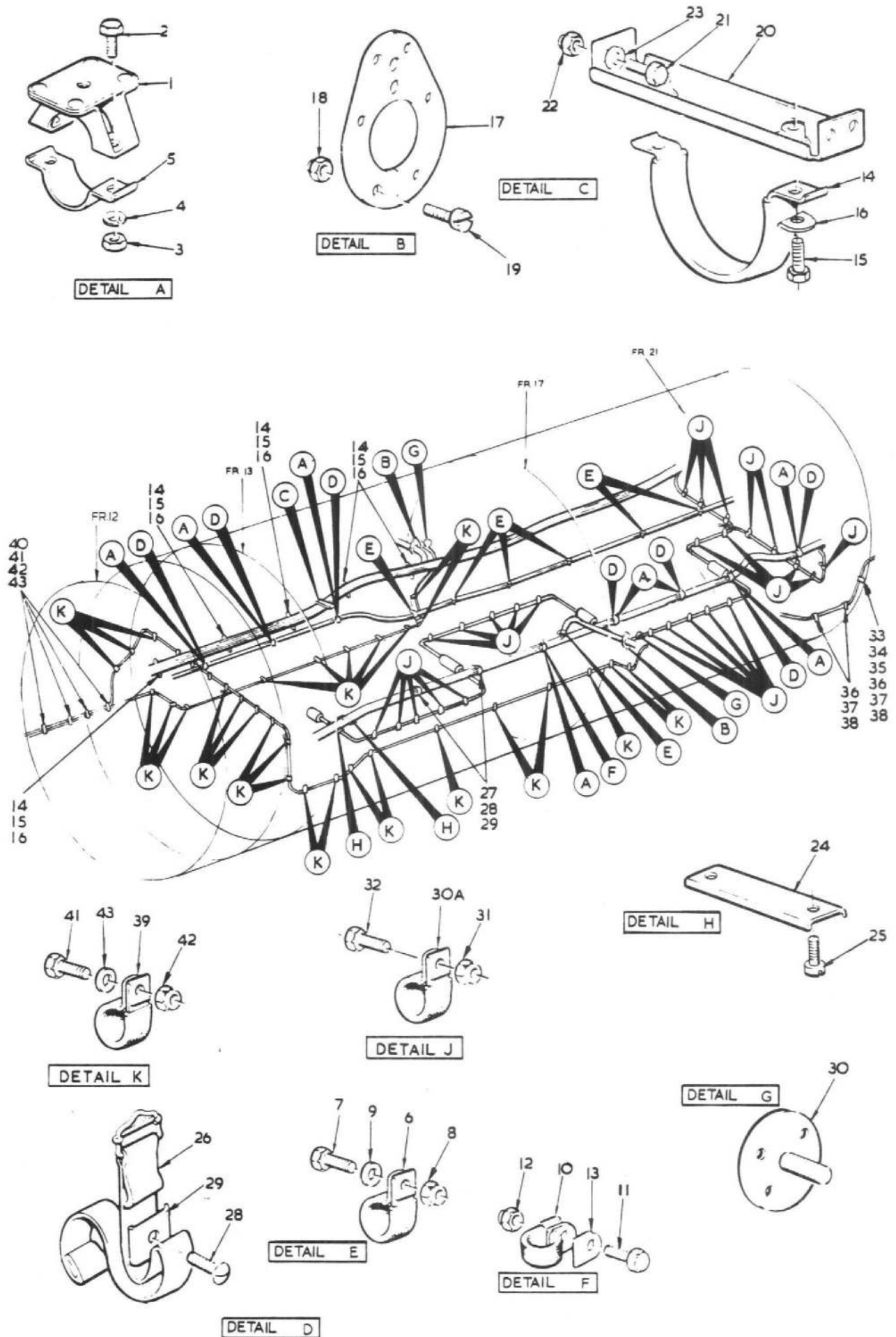


FIG. 2 ELECTRICAL EQUIPMENT IN CENTRE FUSELAGE

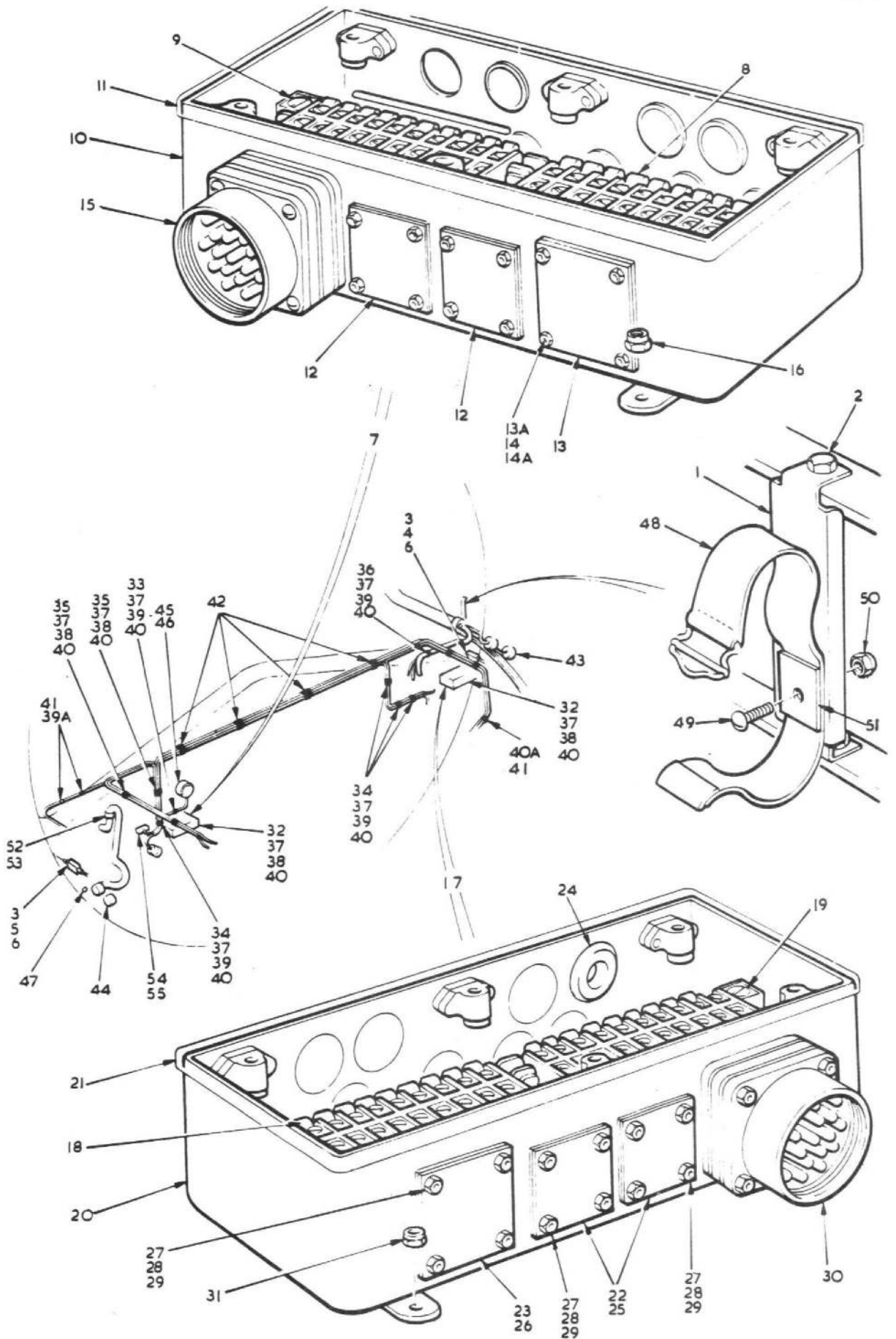


FIG. 3 ELECTRICAL EQUIPMENT IN CENTRE FUSELAGE

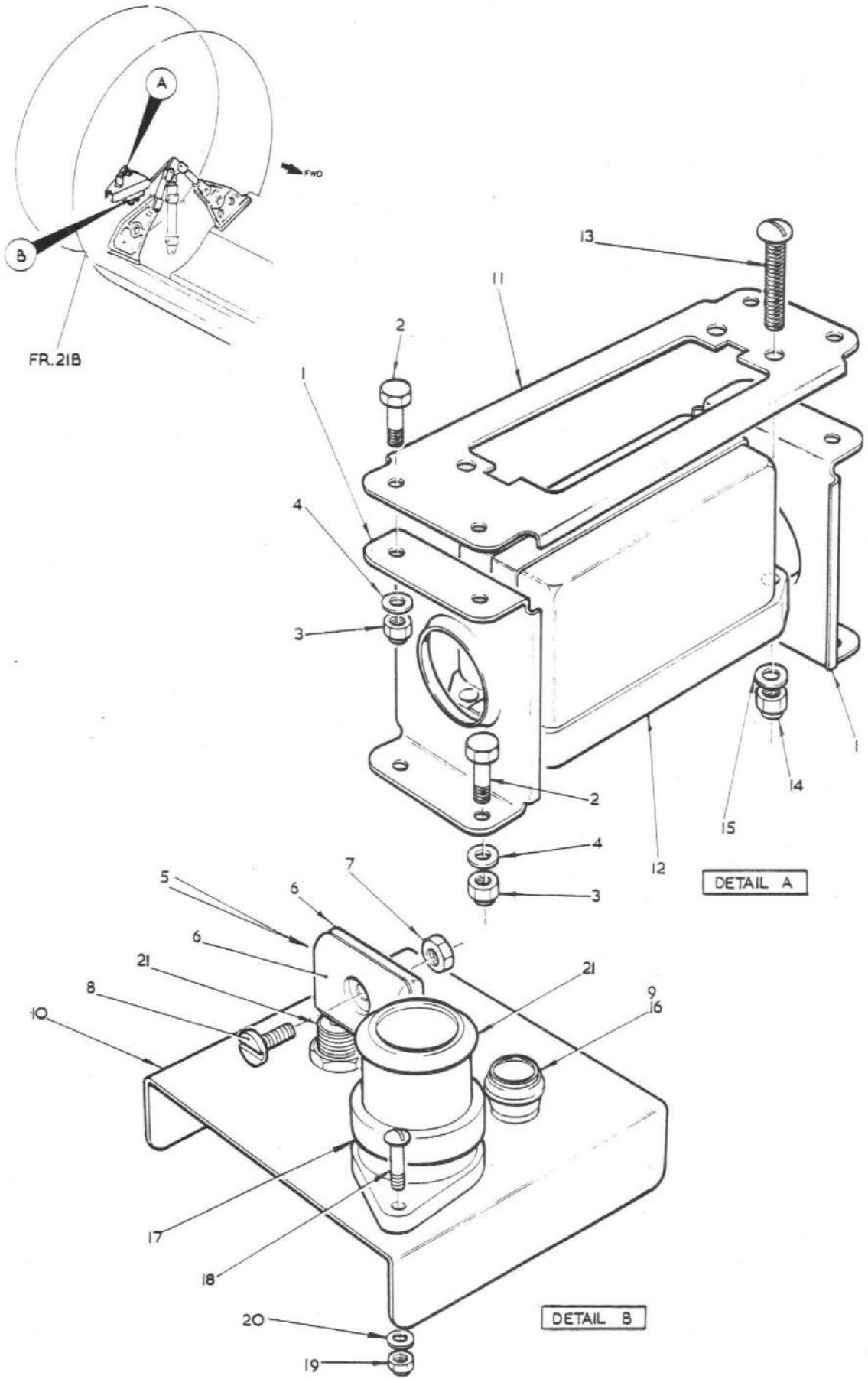
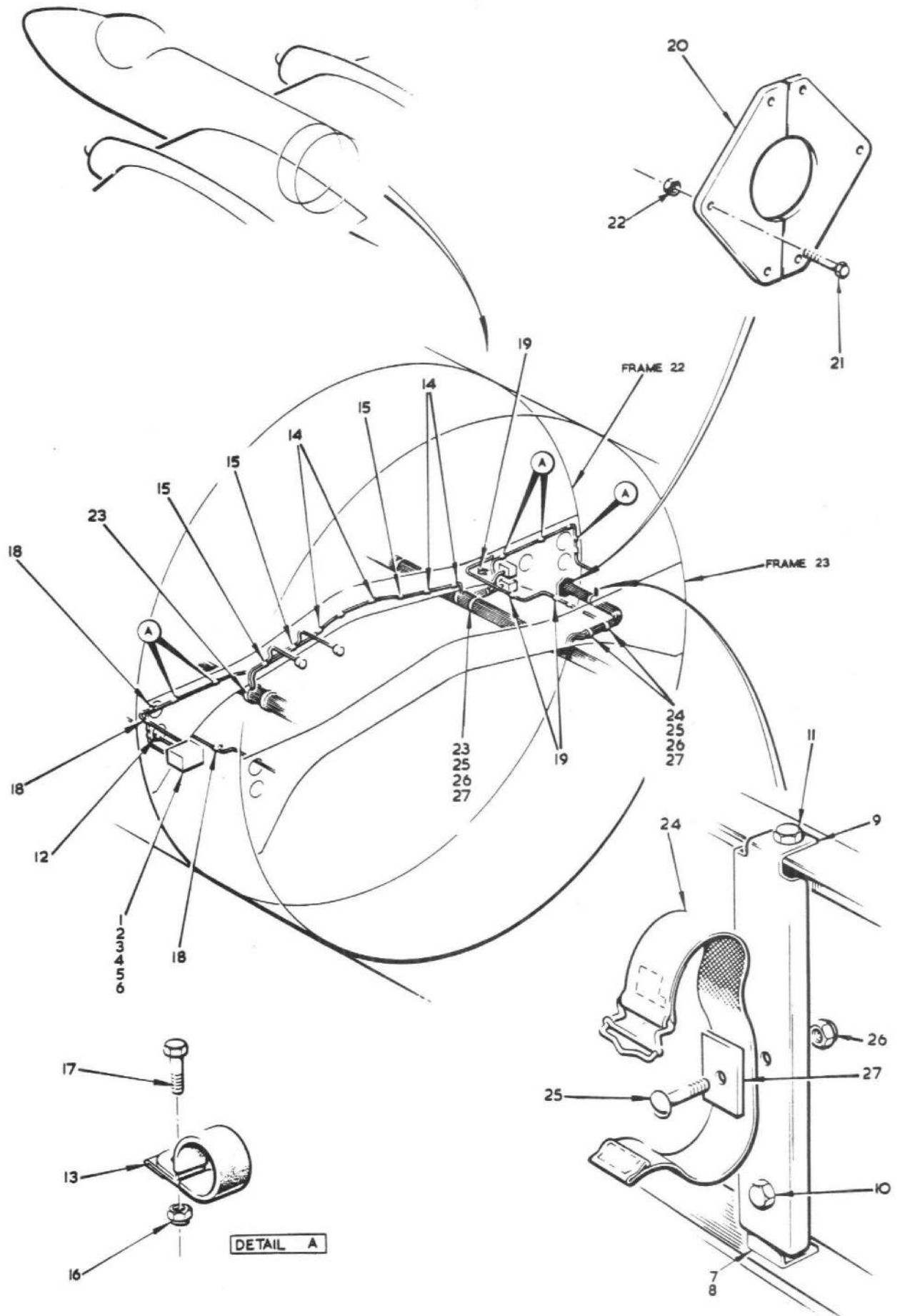


FIG. 4 ELECTRICAL EQUIPMENT IN REAR FUSELAGE  
CODE T SECT. EA



CODE T **FIG. 5 ELECTRICAL EQUIPMENT IN CENTRE FUSELAGE** SECT. EA

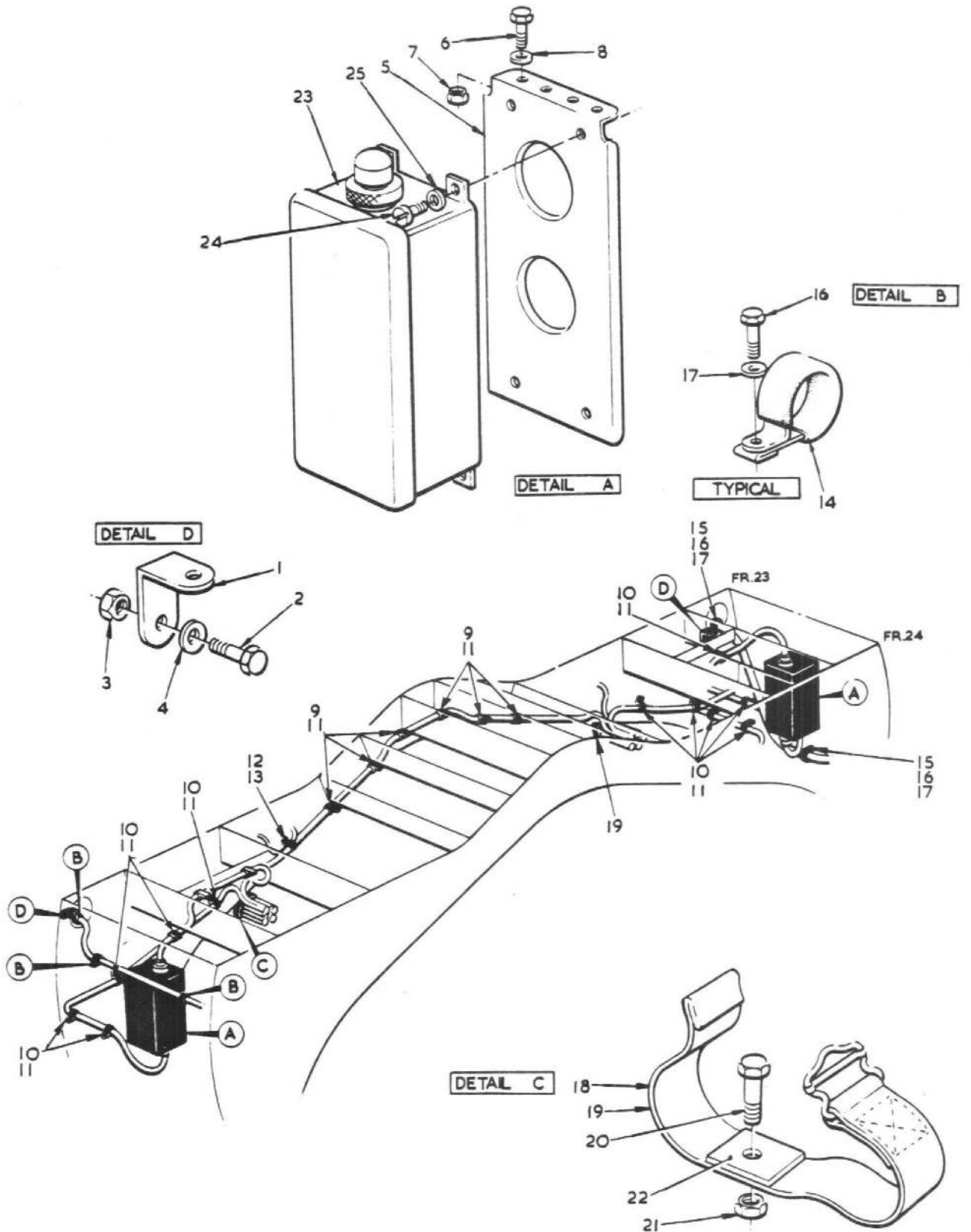
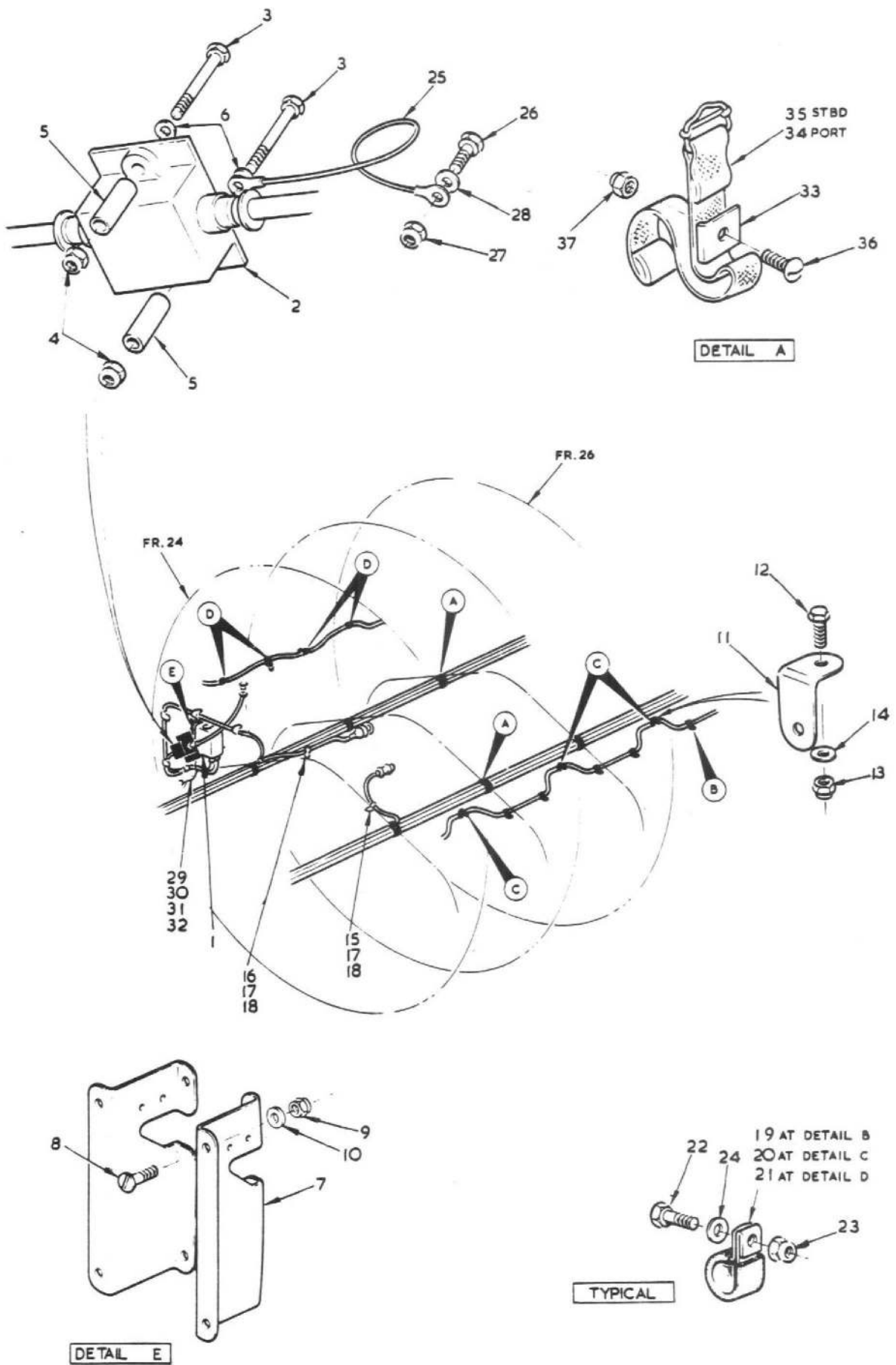


FIG. 6 ELECTRICAL EQUIPMENT IN CENTRE FUSELAGE



CODE T **FIG. 7 ELECTRICAL EQUIPMENT IN CENTRE FUSELAGE** SECT. EA

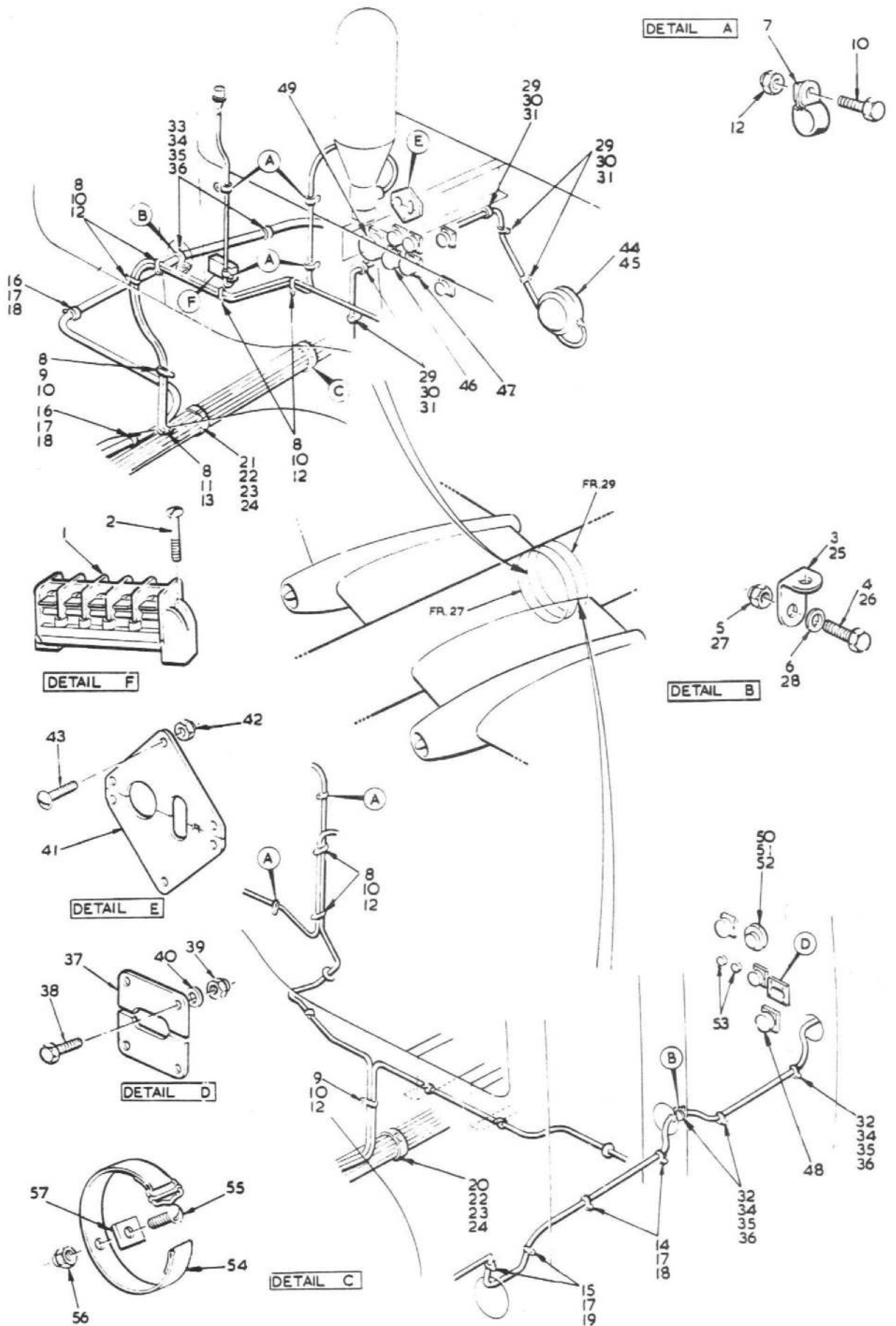


FIG. 8 ELECTRICAL EQUIPMENT IN CENTRE FUSELAGE

CODE T

SECT. EA

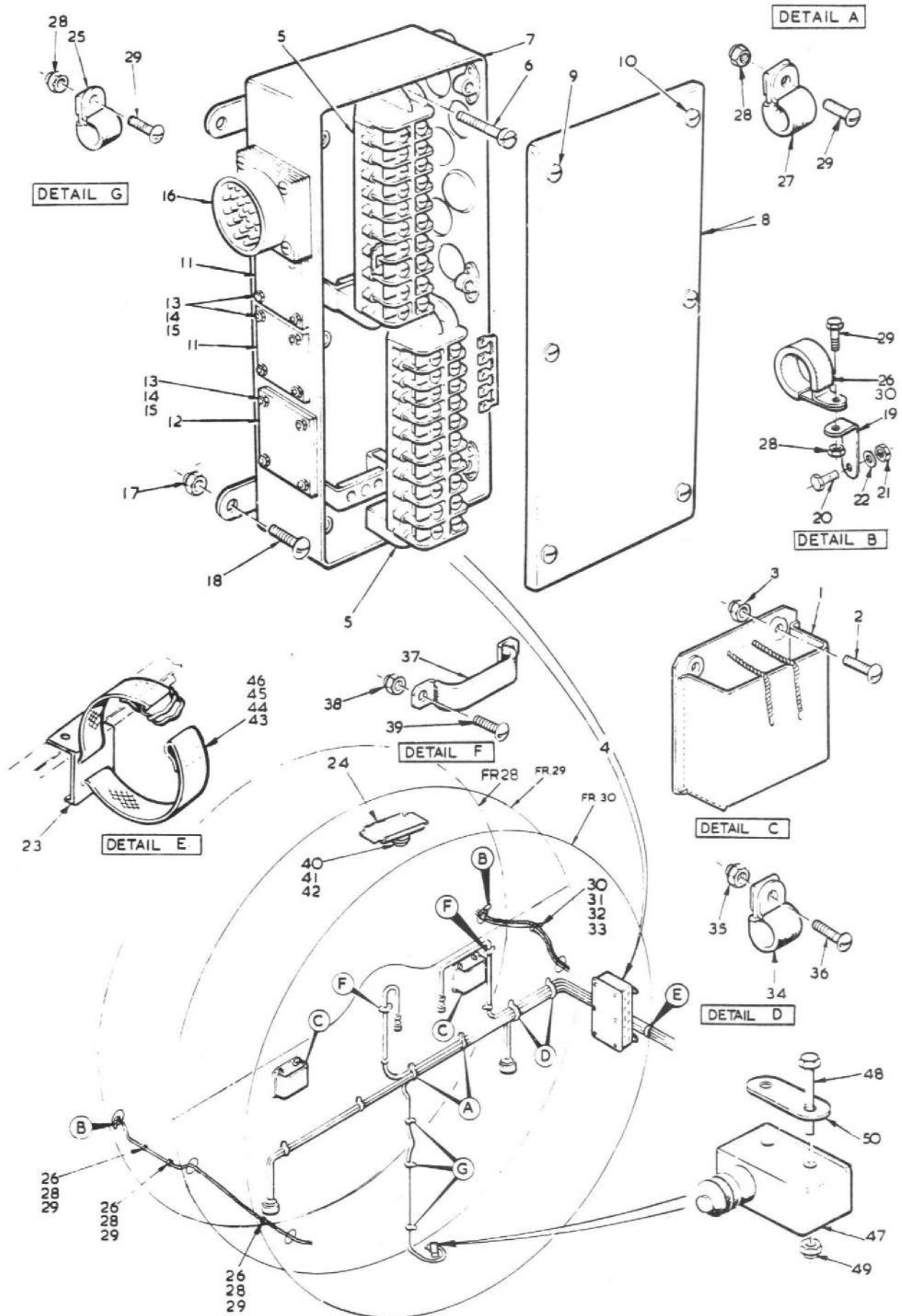


FIG. 9 ELECTRICAL EQUIPMENT IN CENTRE FUSELAGE

CODE T

SECT. FA

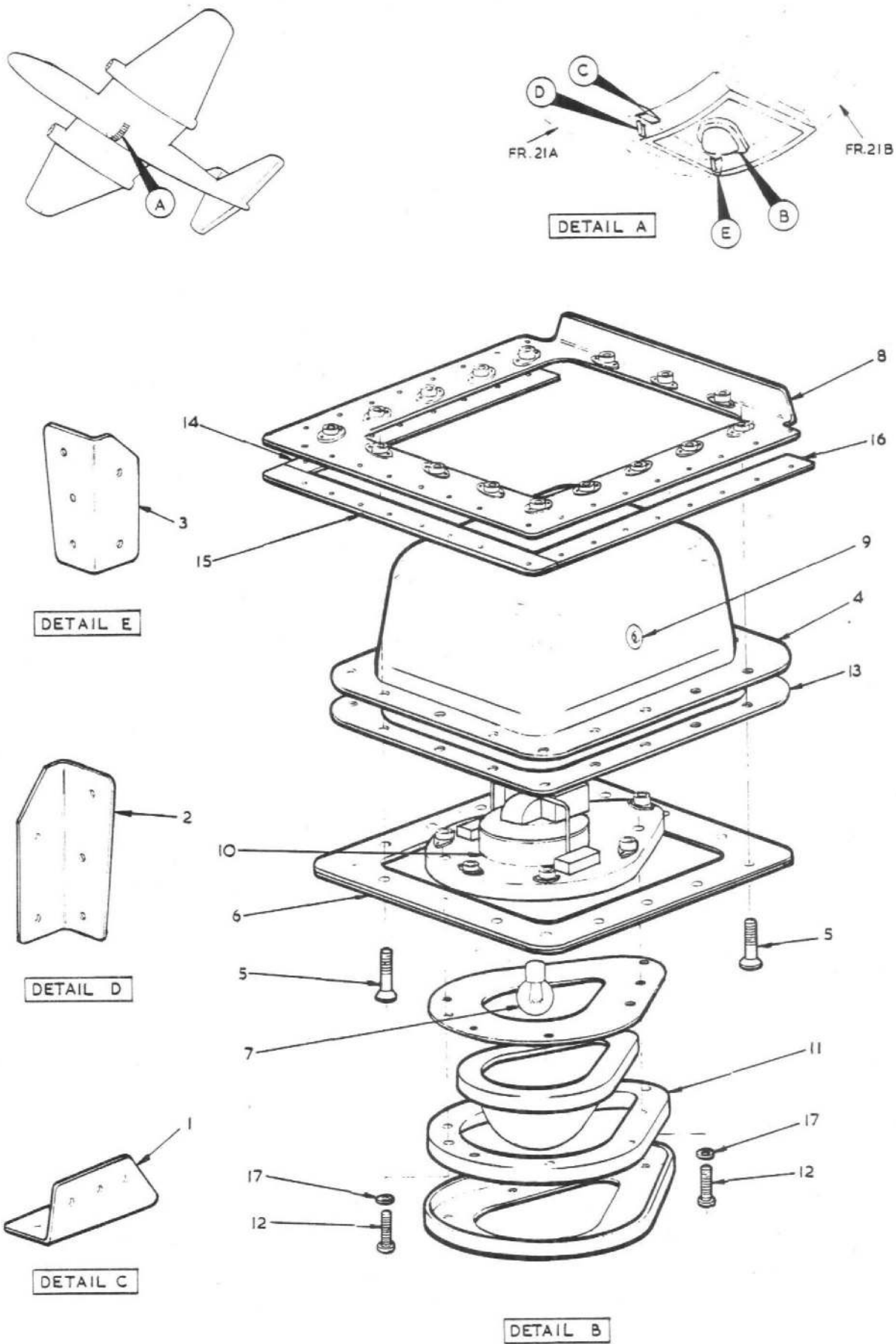


FIG. 10 ELECTRICAL EQUIPMENT IN CENTRE FUSELAGE

CODE T

SECT.EA

This file was downloaded from the RTFM Library.

Link: [www.scottbouch.com/rtfm](http://www.scottbouch.com/rtfm)

Please see site for usage terms, and more aircraft documents.



Instrument panel from a MiG-21 (XP558)