

ARMAMENT
PHOTOFLASH EQUIPMENT

Part No.	Description	No. off	Material Specification	Class of Eqpt M.R. or L.M.	Plate						
						1	2	3	4	5	6
	ARMAMENT, FLARE BEAM AND PHOTOFLASH DISCHARGER ASSEMBLY (EB8.97.1)	-	-	-	-						
	Spares for:										
EA2.97.5003	BEAM, Flare, Group (Pre Mod 4809)	1	-	P	-						R
EA2.97.5003	BEAM, Flare, Group (Mod 4809)	1	-	P	BA1/3						R
	Spares for:										
EA2.97.5079	ANGLE, crutch bolt housing, forward, port, group	1	-	C	BA2/4						R
EA2.97.5091	ANGLE, crutch bolt housing, forward, port, group	1	-	C	BA2/5						R
EA2.97.5080	ANGLE, crutch bolt housing, forward, starboard, group	1	-	C	BA2/6						R
EA2.97.5092	ANGLE, crutch bolt housing, forward, starboard, group	1	-	C	BA2/7						R
EA2.97.5073	ANGLE, crutch bolt housing, aft, port, group	1	-	C	BA2/8						R
EA2.97.5085	ANGLE, crutch bolt housing, aft, port, group	1	-	C	BA2/9						R
EA2.97.5074	ANGLE, crutch bolt housing, aft, starboard, group	1	-	C	BA2/10						R
EA2.97.5086	ANGLE, crutch bolt housing, aft, starboard, group	1	-	C	BA2/11						R
	Attachment of angle to flare beam										
EA2.97.5057	Bolt, special 1/4in. BSF	24	S94	C	BA2/12						R
A27/EP	Nut, 1/4in. BSF	24	-	C	BA2/13						R
SP15/E	Washer	24	-	C	BA2/14						R
EA1.97.275	BOLT, bearing, No's 1 & 2 slip	2	S97	L	BA1/15						R
	Attachment of bearing bolt to beam										
AGS2001/Q1	Nut, stiff, 5/8in. BSF	1	-	C	BA1/16						R
EEAS28/54JS	Washer, special	1	-	C	BA1/17						R
EA1.97.285	Washer, 1.54in. dia.	1	DTD683	C	BA1/18						R
EA2.97.207	BOLT, crutch, group	4	-	C	BA1/19						R
	Spares for:										
EA2.97.235	PAD, crutch bolt	4	-	C	BA2/20						R
	Attachment of crutch bolt to crutch support on beam										
A27/NT	Nut, 1/2in. BSF	4	-	C	-						R
SP14/N	Washer	4	-	C	-						R
EA2.97.5063	BOLT, crutch, aft, group	2	-	C	BA2/23						R
EA2.97.5053	BOLT, crutch, forward, group	2	-	C	BA2/24						R
	Attachment of crutch bolt to crutch support on beam										
EA2.97.5055	Nut, 3/4in. BSF	4	S1	C	BA2/25						R
EA2.81.585	CABLE, "1Q1", group	1	-	C	BA1/26						R

ARMAMENT
PHOTOFLASH EQUIPMENT

Part No.	Description	No. off	Material Specification	Class of Eqpt M.R. or L.M.	Plate							
						1	2	3	4	5	6	
Consisting of:												
5E/3079	CABLE, Quinpran 6	AR	-	C	BA2/27	R						
CZ.50356	PLUG, size Z	1	-	C	BA2/28	R						
Z49428	SLEEVE, cable	4	-	C	BA2/29	R						
EEAS146/16	SLEEVE, 3/4in. long	4	-	C	BA2/30	R						
EEAS146/6	SLEEVE, 1 in. long	1	-	C	BA2/31	R						
5D/525	SOCKET, 5 way, type A	1	-	C	BA2/32	R						
Z18413	STRAINER, cable	1	-	C	BA2/33	R						
Attachment of cable group to mounting bracket												
AGS2001/B1	Nut, stiff 4BA	4	-	C	BA2/34	R						
A32/B16	Screw, 4BA	4	-	C	BA2/35	R						
EA2.81.657	CABLE, "Cocking Indicator", No. 1 slip, group	1	-	C	BA1/36	R						
Consisting of:												
5E/4183	CABLE, Uninyvin 20	AR	-	C	BA1/37	R						
AGS1600/B	EYE-END, cable	1	-	C	BA1/38	R						
5CY/9330749	PLUG, 2 pin flat, type R	1	-	C	BA1/39	R						
5K/	SLEEVE, Vidaflex	AR	-	C	BA1/40	R						
EEAS146/16	SLEEVE, 3/4in. long	2	-	C	BA1/41	R						
EEAS146/6	SLEEVE, 1 in. long	2	-	C	BA1/42	R						
Attachment of cable group to beam												
EA3.81.1279	Bolt, "U", fixing, 4BA	2	S1	C	BA1/43	R						
A25/1C	Bolt, 2BA	7	-	C	BA2/44	R						
AS3180/3B	Clip, "P", 3/16in. dia.	4	-	C	BA2/45	R						
AS3180/7B	Clip, "P", 7/16in. dia.	3	-	C	BA2/46	R						
AGS2001/C1	Nut, stiff, 2BA	7	-	C	BA2/47	R						
AGS2001/B1	Nut, stiff, 4BA	2	-	C	BA1/48	R						
EA2.97.5045	CABLE, "Jettison Plug to E.M. Release Unit", group	1	-	C	BA1/49	R						
Attachment of cable group to beam												
A25/1B	Bolt, 4BA	6	-	C	BA2/50	R						
AS3180/4B	Clip, "P", 1/4in. dia.	3	-	C	BA2/51	R						
AS3180/8B	Clip, "P", 1/2in. dia.	3	-	C	BA2/52	R						
AGS2001/B1	Nut, stiff, 4BA	6	-	C	BA2/53	R						
EA2.97.5125	CABLE, "Cocking Indicator", No. 2 slip, group	1	-	C	BA1/54	R						
Consisting of:												
5E/4183	CABLE, Uninyvin 20	AR	-	C	BA1/55	R						
5CY/9330749	PLUG, 2 pin flat, type R	1	-	C	BA1/56	R						
EEAS146/16	SLEEVE, 3/4in. long	3	-	C	BA1/57	R						
EEAS146/12	SLEEVE, 1 in. long	3	-	C	BA1/58	R						
Z49428	SLEEVE	1	-	C	BA1/59	R						
HC500	TAG	1	-	C	BA1/60	R						

ARMAMENT
PHOTOFLASH EQUIPMENT

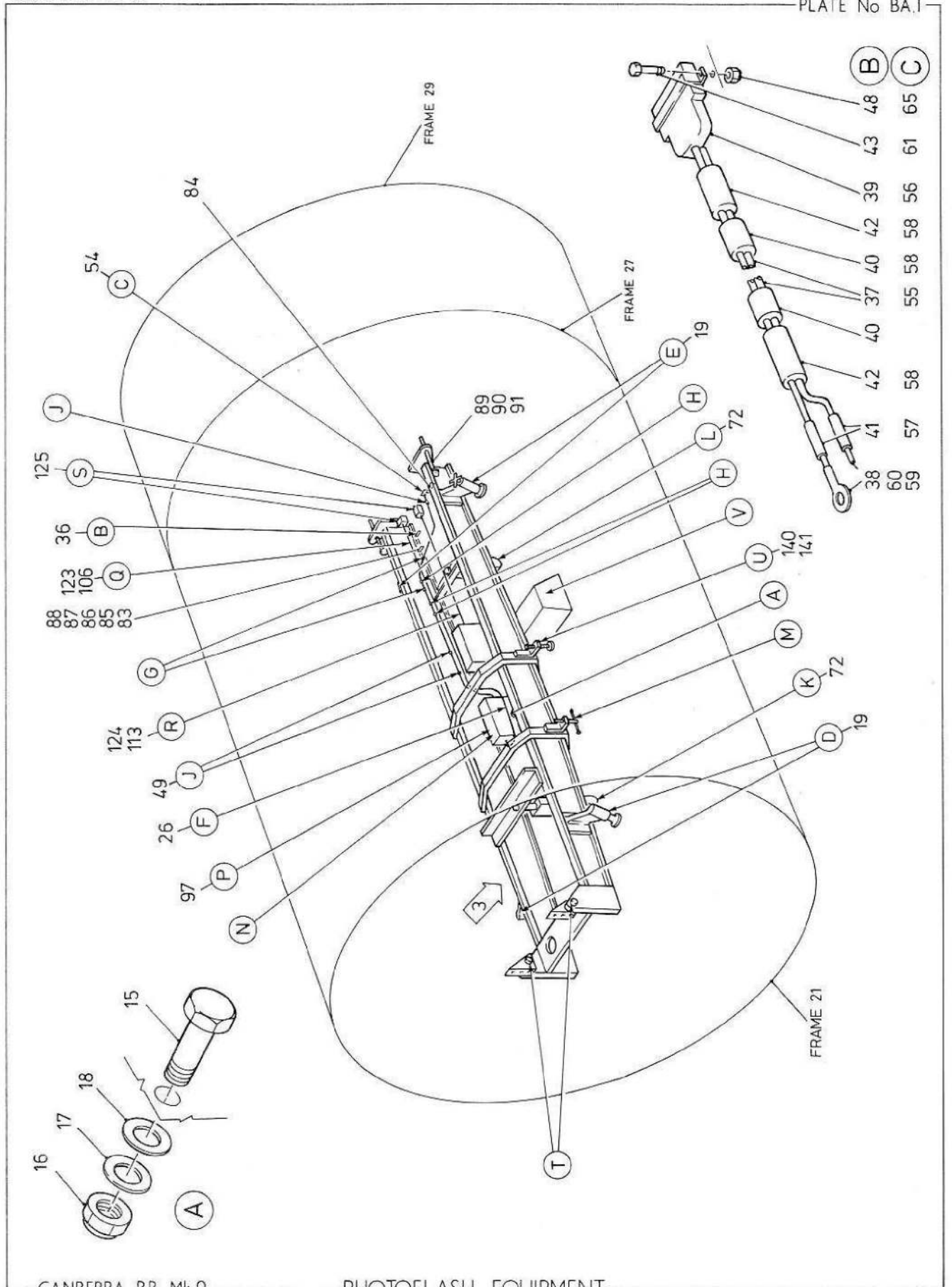
Part No.	Description	No. off	Material Specification	Class of Eqpt M.R. or L.M.	Plate										
						1	2	3	4	5	6				
	Attachment of cable group to beam														
EA3.81.1135	Bolt, "U", fixing, 4BA	2	-	C	BA1/61										R
A25/1C	Bolt, 2BA	3	-	C	BA2/62										R
AS3180/4C	Clip, "P", 1/4in. dia.	3	-	C	BA2/63										R
AGS2001/C1	Nut, stiff, 2BA	3	-	C	BA2/64										R
AGS2001/B1	Nut, stiff, 4BA	2	-	C	BA1/65										R
11A/3684	COVER, dust, housing, E.M. release unit	2	-	C	BA3/66										R
EA2.97.5097	HOUSING, crutch bolt	4	S1	C	BA2/67										R
	Attachment of housing to angles														
EA2.97.5057	Bolt, special, 1/4in. BSF	12	S94	C	BA2/68										R
A27/EP	Nut, 1/4in. BSF	12	-	C	BA2/69										R
SP15/E	Washer	12	-	C	BA2/70										R
11A/3674	HOUSING, E.M. release unit	2	-	P	BA3/71										R
-	INSTALLATION OF BOMB HOIST TYPE 'C' Mk 1 to FLARE BEAM (EB8.97.15) (Mod 4809, Satisfied by CM/CAN/GE0262/NEAF)	-	-	-	BA1/72										R
	Consisting of:														
EB8.97.9	ATTACHMENT, front	1	-	LM	BA2/73										R
EB8.97.11	ATTACHMENT, rear	1	-	LM	BA2/74										R
	Attachment of attachment to beam														
AGS2002/N2	Nut, 1/2in. BSF	2	-	C	BA2/75										R
SP15/N	Washer	4	-	C	BA2/76										R
EB8.97.3	BOLT, crutch, group (Replaces 26FZ/22438 EA2.97.207 2 off)	2	-	LM	BA2/77										R
	Attachment of crutch bolt to crutch support on beam														
A27/NP	Nut, 1/2in. BSF	2	-	C	BA2/78										R
SP90/C9	Pin, split, 1/16in. dia.	2	-	C	BA2/79										R
SP15/N	Washer	2	-	C	BA2/80										R
EB8.97.5	PLATE, front	1	-	LM	BA2/81										R
EB8.97.7	PLATE, rear	1	-	LM	BA2/82										R
EA2.97.5119	LABEL "Cocking Indicator No. 1. Slip"	1	Masseloid	C	BA1/83										R
EA2.97.5121	LABEL "Cocking Indicator No. 2. Slip"	1	Masseloid	C	BA1/84										R
EA2.97.5117	LABEL "Stowage No. 2. Slip Jettison Plug"	1	Masseloid	C	BA1/85										R
	Attachment of label to beam														
AS155/304	Rivet, 1/32in. dia.	6	-	C	BA1/86										R
EA2.97.183	PEG, locating, flash carrier	2	S96	C	BA1/87										R
	Attachment of locating peg to beam														
AGS585/D	Washer, spring	2	-	C	BA1/88										R

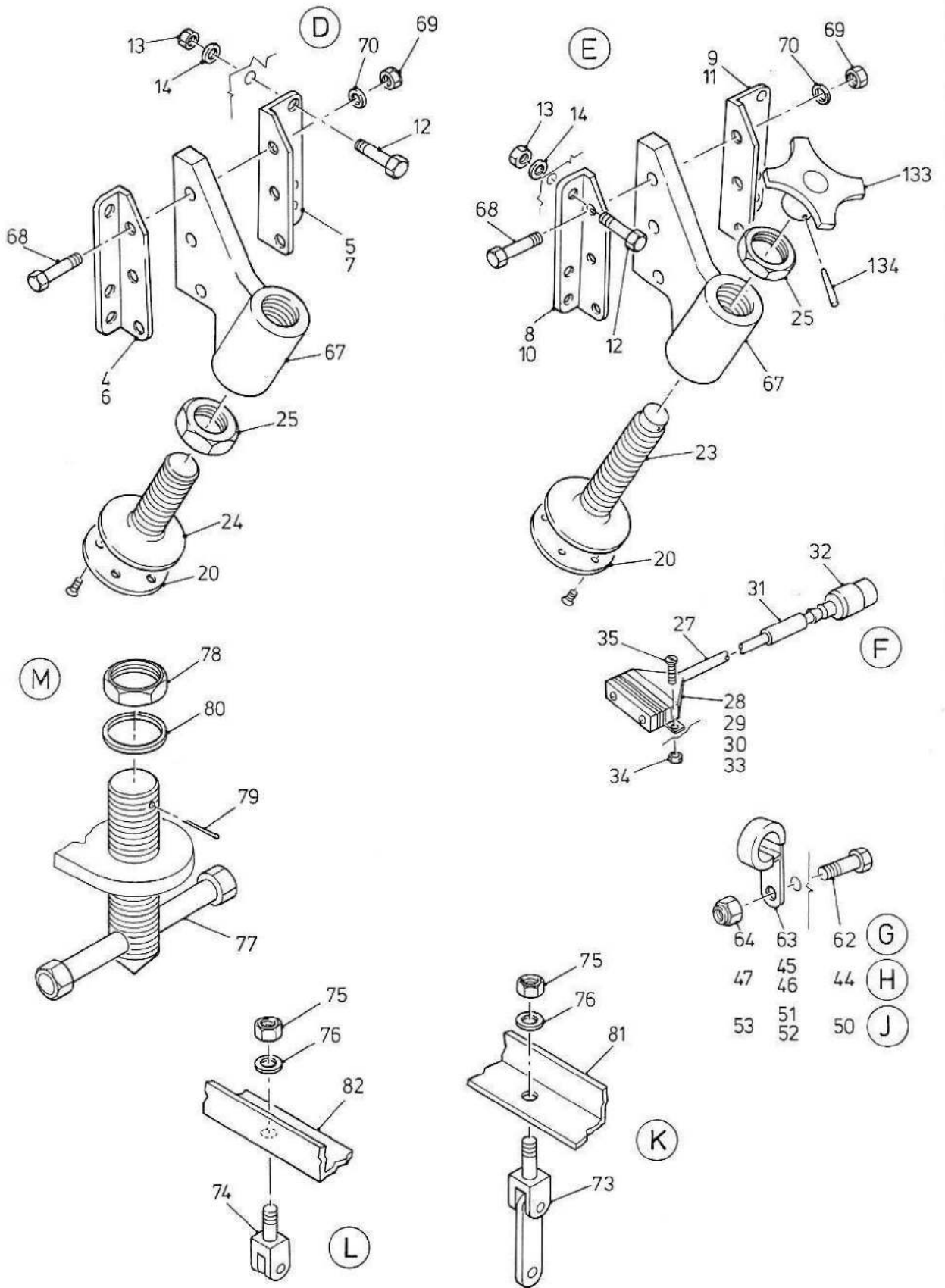
ARMAMENT
PHOTOFLASH EQUIPMENT

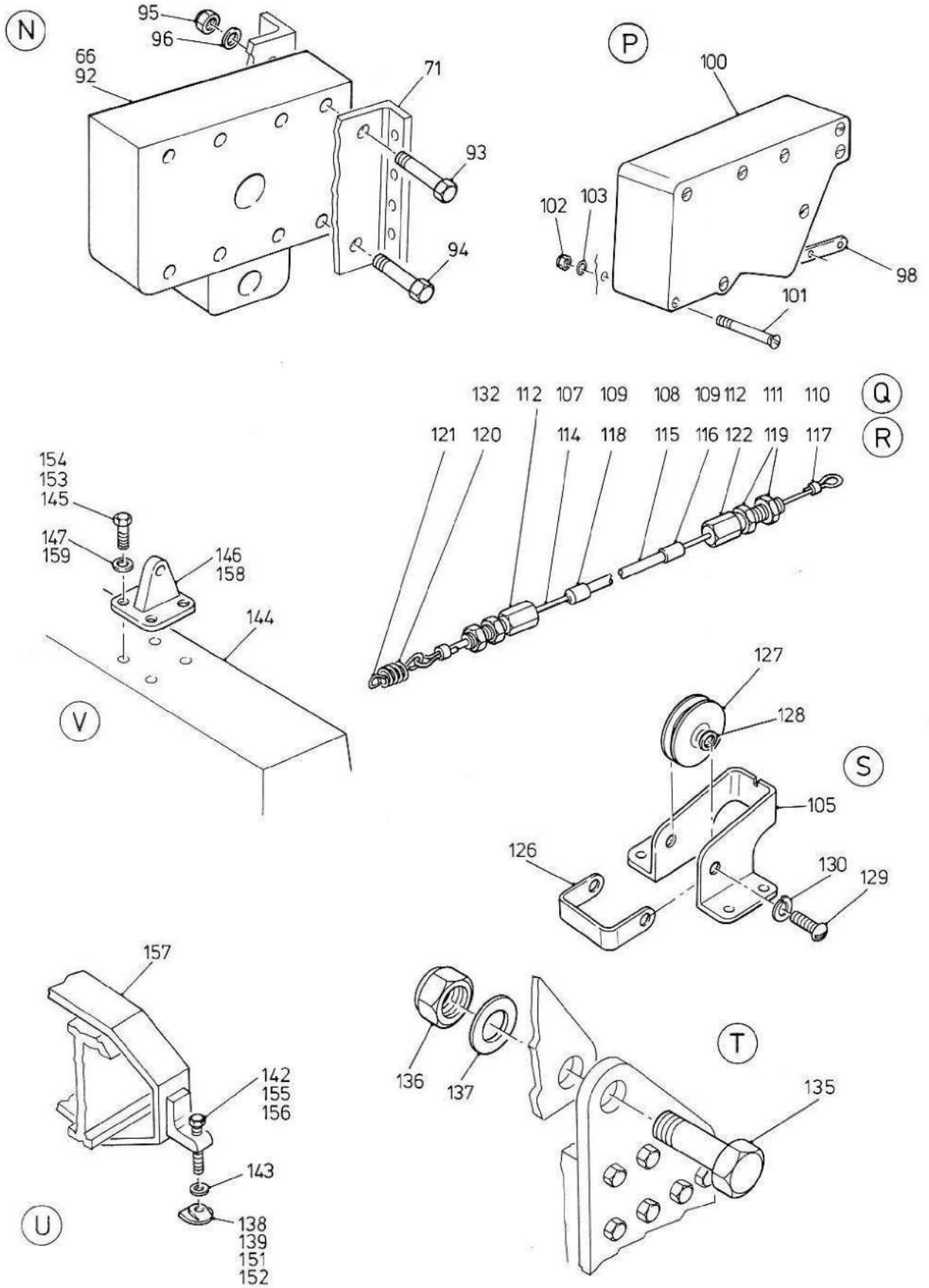
Part No.	Description	No. off	Material Specification	Class of Eqpt M.R. or L.M.	Plate	
					1 2 3 4 5 6	
	Consisting of:					
Bowden P19/52A	CABLE	1	-	C	BA3/114	R
Bowden B1	CONDUIT, outer	1	-	C	BA3/115	R
Bowden PN974B	FERRULE	1	-	C	BA3/116	R
Bowden 79/109	FERRULE	2	-	C	BA3/117	R
Bowden P.3954	FERRULE	1	-	C	BA3/118	R
Bowden PN23	NUT	2	-	C	BA3/119	R
EA2.97.5029	SPRING, compression	1	DTD215	C	BA3/120	R
EA2.97.5035	SPRING, locator and wire loop	1	-	C	BA3/121	R
EA2.97.529	STOP, adjustable	1	-	C	BA3/122	R
EA2.97.5021	COVER, spring, assembly No. 1 slip	1	-	C	BA1/123	R
EA2.97.5023	COVER, spring, assembly No. 2 slip	1	-	C	BA1/124	R
EA3.97.539	PULLEY, Slip Cable Guide, Group	2	-	C	BA1/125	R
	Spares for:					
EA3.97.531	GUARD, pulley, 22 SWG	2	DTD610	LM	BA3/126	R
EA3.97.535	PULLEY	2	LFS26	C	BA3/127	R
	Attachment of pulley and guard to mounting bracket					
EA3.97.533	Piece, distance, tapped, 4BA	2	S91	C	BA3/128	R
A32/B10	Screw, 4BA	4	-	C	BA3/129	R
SP47/B	Washer, spring	4	-	C	BA3/130	R
	Attachment of pulley group to beam					
SP80/404	Rivet, 1/8in. dia.	8	-	C	-	R
EA2.97.5031	SPRING, compression, No. 1 slip cable	1	DTD215	C	BA3/132	R
EA2.97.5113	WHEEL, star, aft crutch bolt	2	L64	C	BA2/133	R
	Attachment of star wheel to aft crutch bolt					
SP65/H8	Pin, taper, 1/8in. dia.	2	-	C	BA2/134	R
	Attachment of beam to frame 21					
A25/10Q	Bolt, 5/8in. BSF	2	-	C	BA3/135	R
AGS2001/Q1	Nut, stiff, 5/8in. BSF	2	-	C	BA3/136	R
AS470/Q	Washer	2	-	C	BA3/137	R
Bristol 551588	BLOCK, crutch	2	-	C	BA3/138	R
Bristol 551589	BLOCK, crutch	2	-	C	BA3/139	R
Bristol 551842	BOLT, crutch, group	2	-	C	BA1/140	R
Bristol 551843	BOLT, crutch, group	2	-	C	BA1/141	R

ARMAMENT
PHOTOFLASH EQUIPMENT

Part No.	Description	No. off	Material Specification	Class of Eqpt M.R. or L.M.	Plate								
						1	2	3	4	5	6		
	Attachment of crutch block and bolt group												
A25/7J	Bolt 3/8in. BSF	4	-	C	BA3/142								R
SP13/J	Washer 3/8in.	4	-	C	BA3/143								R
550550	CARRIER, multi-store, No. 1 Mk 2	1	-	P	BA3/144								R
	Attachment of carrier to flare beam												
A25/6J	Bolt, 3/8in. BSF	4	-	C	BA3/145								R
551547	Journal, suspension No 1	1	-	L	BA3/146								R
SP13/J	Washer, 3/8in.	4	-	C	BA3/147								R
11A/4436961	Wire, shear	5	-	C	-								R
	F49 CAMERA Mk 4 Removable Equipment (Mod 5289) (EB8.83.3077)	-	-	-	-								R
	Spares for:												
	FLAREBEAM, Assembly (Mod 5289) (EB8.83.3081)	2	-	L	-								R
	Spares for:												
Bristol 551588	BLOCK, crutch (Mod 5289)	4	-	C	BA3/151								R
Bristol 551589	BLOCK, crutch (Mod 5289)	4	-	C	BA3/152								R
A25/6J	BOLT, 3/8in. BSF (Mod 5289)	8	-	C	BA3/153								R
A25/7J	BOLT, 3/8in. BSF (Mod 5289)	16	-	C	BA3/154								R
Bristol 551842	BOLT, crutch (Mod 5289)	4	-	C	BA3/155								R
Bristol 551843	BOLT, crutch (Mod 5289)	4	-	C	BA3/156								R
EA2.92.5003	FLAREBEAM (Mod 5289)	2	-	L	BA3/157								R
Bristol 551547	JOURNAL, suspension (Mod 5289)	2	-	C	BA3/158								R
SP13/J	WASHER, 3/8in. (Mod 5289)	24	-	C	BA3/159								R
11A/4755	WIRE, shear (Mod 5289)	10	-	C	-								R







This file was downloaded
from the RTFM Library.
Link: www.scottbouch.com/rtfm
Please see site for usage terms,
and more aircraft documents.

