

CONTROLS
AUTOMATIC PILOT

Part No.	Description	No. off	Material Specification	Class of Eqpt M.R. or L.M.	Plate										
						1	2	3	4	5	6				
	CONTROLS, AUTOMATIC PILOT (EB8.46.1)	-	-	-	-										
	Spares for:														
114EAP	AMPLIFIER, Mk 10 type A	1	-	P	CA1/1										
-	BALANCE, Spring, Bob Weight Assembly (EB8.46.331)	-	-	-	-										
	Spares for:														
EB8.46.293	BOX, Spring, Assembly (Pre Mod 5000 ALT SB/9/077)	2	-	L	-										R
EB8.46.409	BOX, Spring, Assembly (Mod 5000 ALT SB/9/077)	2	-	L	CA2/1										R
	Spares for:														
EB8.46.317	END, pivot (Pre Mod 5000 ALT SB/9/077)	2	L65	C	-										R
EB8.46.407	END, pivot (Mod 5000 ALT SB/9/077)	2	-	C	CA2/2										R
EEAS3/B	HOUSING, bearing (Mod 5000 ALT SB/9/077)	2	-	C	-										R
EB8.00.444	ROD, connecting, c/w spring stop	2	-	C	CA2/3										
EB8.46.291	SPRING	2	DTD215	C	CA2/4										
	Attachment of spring box to lever and bracket														
A25/12E	Bolt, 1/4in. BSF	2	-		CA2/5										
A27/CS	Nut, slotted, 2BA	2	-	C	CA2/6										
A27/ES	Nut, slotted, 1/4in. BSF	2	-	C	CA2/7										
SP90/C5	Pin, split 1/16in. dia.	2	-	C	CA2/8										
SP90/C8	Pin, split, 1/16in. dia.	2	-	C	CA2/9										
SP15/E	Washer	2	-	C	CA2/10										
145EAP	BOX, junction, type A	1	-	P	CA1/2										
6TB/1862	CARD, link setting - Amplifier	1	-	C	CA1/3										
6TB/432	CARD, link setting - Auto approach	1	-	C	CA1/4										
6TB/433	CARD, link setting - Height section	1	-	C	CA1/5										
6TB/434	CARD, link setting - Heading selector	1	-	C	CA1/6										
122EAP	CONDENSER UNIT, type A	1	-	P	CA1/7										
129EAP	CONTROLLER, pilots, type A	1	-	P	CA1/8										
135EAP	COUPLING, UNIT, auto approach, type B	1	-	P	CA1/9										
147EAP	CUT-OUT, roll error	1	-	P	CA1/10										
6TB/1648	GYRO UNIT, type B	1	-	P	CA1/11										
	Attachment of gyro unit to equipment upper bay														
AGS2001/E1	Nut, stiff, 1/4in. BSF	2	-	C	CA1/12										
EB8.81.4807	Stud	1	-	C	CA1/13										
EB8.81.4809	Stud	2	S93	C	CA1/14										
131EAP	INDICATOR, remote trim, type A	1	-	P	CA1/15										
EB8.81.5951	LEAD, bonding (Mod 3828)	1	-	LM	-										
	Attachment of bonding lead to structure														
A25/3C	Bolt, 2BA	1	-	C	-										
A27/CP	Nut, 2BA	1	-	C	-										
AGS2001/C1	Nut, stiff	1	-	C	-										
SP13/C	Washer	1	-	C	-										R

CONTROLS
AUTOMATIC PILOT

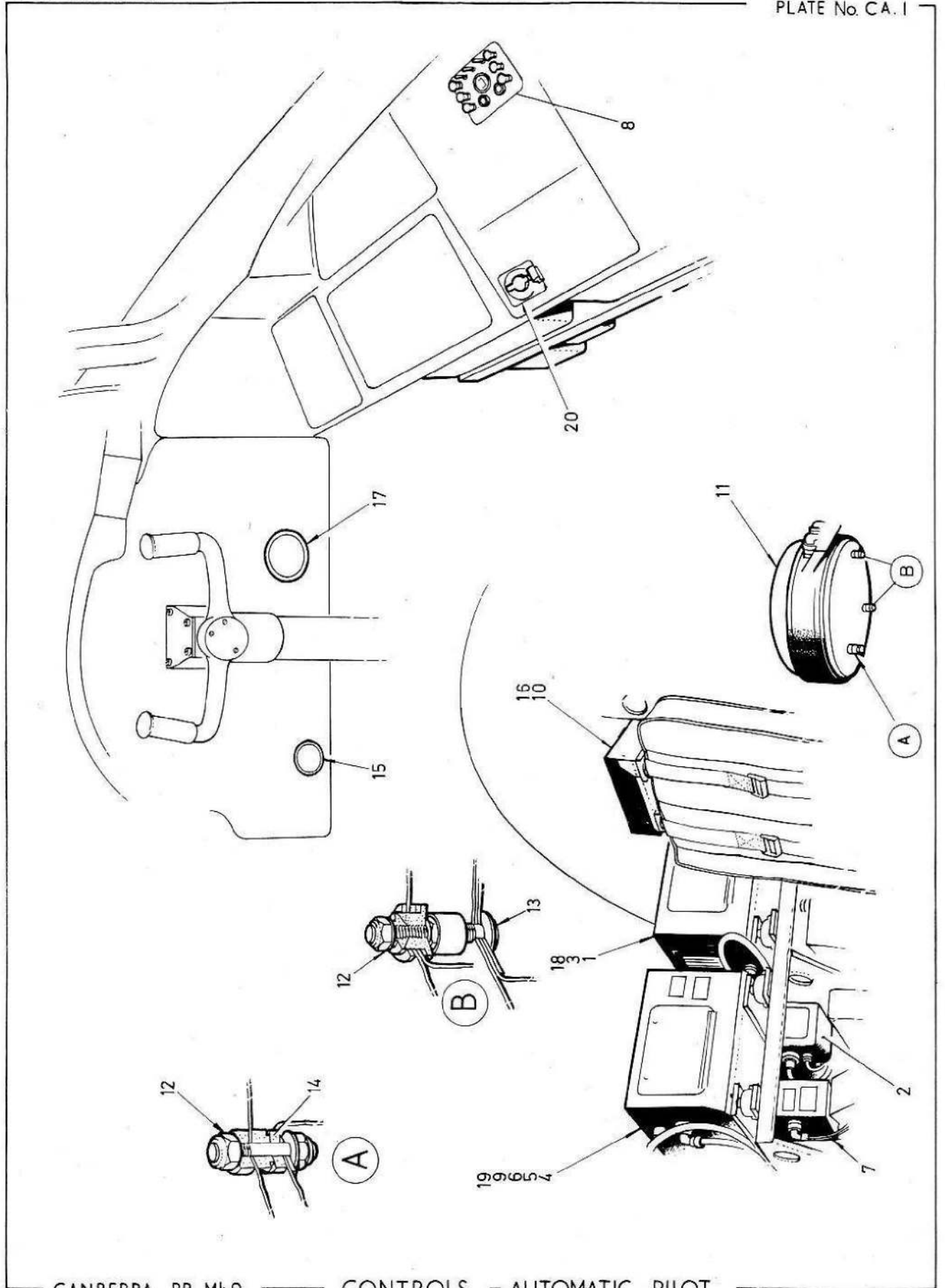
Part No.	Description 1 2 3 4 5 6	No. off	Material Specification	Class of Eqpt M.R. or L.M.	Plate
	INSTALLATION in Rear Fuselage (EB8.46.5)	-	-	-	-
	Spares for:				
EB8.46.27	BRACKET, mounting, rudder servo	1	-	L	CA2/11
EB8.46.269	BRACKET, Mounting, Elevator Servo Group.	1	-	L	CA2/12
	Spares for:				
EB8.46.329	BLOCK, stop	1	L65	C	CA2/13
	Attachment of block to mounting				
A25/4C	Bolt, 2BA	2	-	C	CA2/14
AGS2001/C1	Nut, 2BA	2	-	C	CA2/15
SP15/C	Washer, 2BA	2	-	C	CA2/16
EB8.46.281	STOP, travel	1	DTD683	C	CA2/17
	Attachment of stop to mounting				
A25/10E	Bolt, 1/4in. BSF	1	-	C	CA2/18
A27/EP	Nut, 1/4in. BSF	1	-	C	CA2/19
	Attachment of brackets to pedestal				
A25/2C	Bolt, 2BA	12	-	C	CA2/20
SP13/C	Washer, 2BA	12	-	C	CA2/21
EB8.46.371	GUARD, elevator servo lever	1	L65	C	CA2/22
	Attachment of guard to pedestal				
A25/2C	Bolt, 2BA	4	-	C	CA2/23
SP16/C	Washer, 2BA	4	-	C	CA2/24
EB8.46.325	LEVER, elevator, servo c/w ballrace	1	-	L	CA2/25
EB8.46.17	LEVER, rudder servo c/w ballrace	1	-	L	CA2/26
	Attachment of levers to servos				
EB8.46.259	Bolt, driving	6	S96	C	CA2/27
A27/CS	Nut, 2BA	6	-	C	CA2/28
SP90/C8	Pin, split, 1/16in. dia.	6	-	C	CA2/29
11EAP	MOUNTING, servo motor, type A	2	-	P	CA2/30
384EAP	SERVO MOTOR, type B	2	-	P	CA2/31
	Attachment of mounting and servo motor to bracket				
A25/3E	Bolt, 1/4in. BSF	6	-	C	CA2/32
A25/11E	Bolt, 1/4in. BSF (Elevator stop block)	1	-	C	CA2/33
A27/ES	Nut, slotted, 1/4in. BSF	6	-	C	CA2/34
SP90/C8	Pin, split, 1/16in. dia.	6	-	C	CA2/35

CONTROLS
AUTOMATIC PILOT

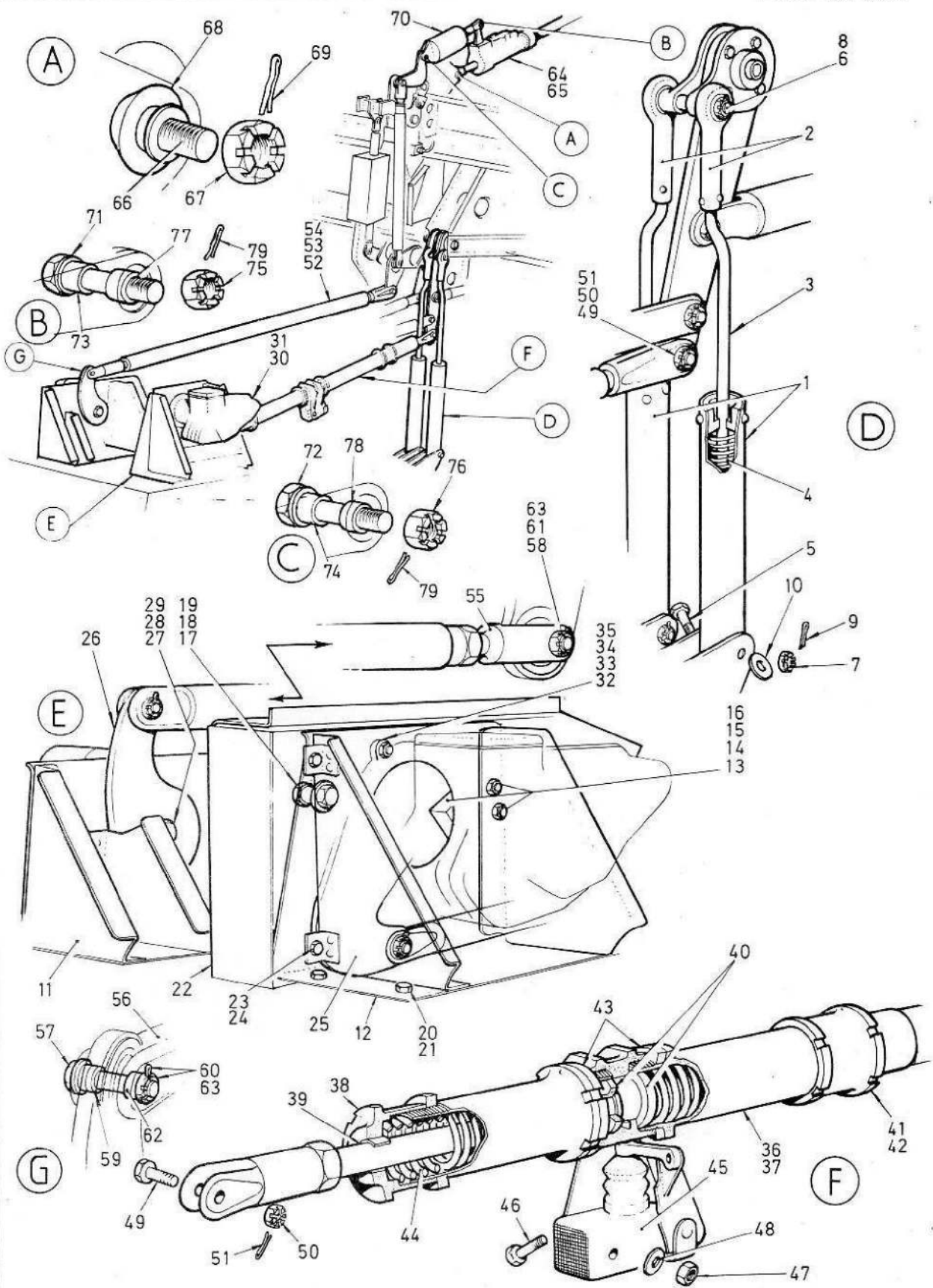
Part No.	Description	No. off	Material Specification	Class of Eqpt M.R. or L.M.	Plate
EB8.46.201x5	STRUT, Spring, Elevator Assembly (Mod 4824 Pre Mod 5285)	1	-	P	CA2/36
EB8.46.201x6	STRUT, Spring, Elevator Assembly (Mod 5285)	1	-	P	CA2/37
	Spares for:				
EB8.46.207	CAP, End Group	1	-	L	CA2/38
	Spares for:				
Mag Bronze Co CT.173	BUSH "oilite", 9/16in. O/D x 7/16in. I/D x 3/8in. long	1	-	C	CA2/39
EB8.46.227	CAP, spring	2	DTD5054	C	CA2/40
EB8.46.229	FORKEND complete (Pre Mod 4930)	1	-	C	CA2/41
EB8.46.401	FORKEND, complete (Mod 4930)	1	-	C	CA2/42
EB8.46.217	LOCKNUT	4	DTD5054	C	CA2/43
EB8.46.221	SPRING	2	DTD215	C	CA2/44
Dowty DN1322Z Mk.2 or Dowty DN1322Z Mk.3	SWITCH, micro (Mod 4824)	1	-	L	CA2/45
	Attachment of micro switch to strut				
A25/9B	Bolt, 4BA	2	-	C	CA2/46
AGS2001/B1	Nut, stiff 4BA	2	-	C	CA2/47
SP15/B	Washer	2	-	C	CA2/48
	Attachment of strut to levers				
A25/7E	Bolt, 1/4in. BSF	2	-	C	CA2/49
A27/ES	Nut, slotted, 1/4in. BSF	2	-	C	CA2/50
SP90/C8	Pin, split, 1/16in. dia	2	-	C	CA2/51
EB8.46.347	TUBE, Control, Rudder, Group (Pre Mod 4930)	1	-	L	CA2/52
EB8.46.399	TUBE, Control, Rudder, Group (Mod 4930, Pre Mod 5473)	1	-	-	CA2/53
EB8.46.403	TUBE, Control, Rudder, Group (Mod 5473)	1	-	-	CA2/54
	Spares for:				
EB8.46.351	FITTING, adjuster	1	DTD683	C	CA2/55
EEAS131/2	FORKEND	1	DTD683	C	CA2/56

CONTROLS
AUTOMATIC PILOT

Part No.	Description	No. off	Material Specification	Class of Eqpt M.R. or L.M.	Plate																	
						1	2	3	4	5	6											
	Attachment of tube to lever																					
EEAS13/1	Bolt, 1/4in. BSF	1	S11	C	CA2/57																R	
A25/7E	Bolt, 1/4in. BSF	1	-	C	CA2/58																	
EEAS14	Bush	1	S11	C	CA2/59																	R
EEAS63/E	Nut, 1/4in. BSF	1	S96	C	CA2/60																	R
A27/ES	Nut, slotted, 1/4in. BSF	1	-	C	CA2/61																	
EEAS127	Piece, distance	1	S96	C	CA2/62																	R
SP90/C8	Pin, split 1/16in. dia.	2	-	C	CA2/63																	
143EAP	MOUNTING. "Multiplex"	1	-	C	CA1/16																	
	ROLL DAMPER, Installation (Mod 3359) (EB8.81.5751)	-	-	-	-																	
2SMT	SELECTOR, heading, type A	1	-	P	CA1/17																	
6TB/349	MOUNTING, tray, amplifier	1	-	P	CA1/18																	
6TB/350	MOUNTING, tray, coupling unit	1	-	P	CA1/19																	
6TB/1660	TRIM UNIT	1	-	P	CA1/20																	
Lucas CHA90899/3	UNIT, power control, type 101, Mk.3 (Pre Mod 5160) (For spares see AP4515T Vol 3, Part 1, Sect. 2, Chap. 6)	1	-	P	CA2/64																	
Lucas CHA90899/4	UNIT, power control, type 101, Mk.4 (Mod 5160) (For spares see AP4515T Vol 3, part 1, Sect. 2, Chap. 6)	1	-	P	CA2/65																	
	Attachment of power control unit to frame 42																					
EB8.45.1295	Bolt, 1/2in. BSF	1	S97	C	CA2/66																	
A27/NS	Nut, slotted, 1/2in. BSF	1	-	C	CA2/67																	
EB8.45.1297	Piece, distance	1	S3	C	CA2/68																	
SP90/E10	Pin, split, 5/32in. dia.	1	-	C	CA2/69																	
6S/90	UNIT, autostabiliser servo motor type E	1	-	P	CA2/70																	
	Attachment of servo motor unit to power control unit and control lever																					
EB8.45.1563	Bolt, servo motor to power control unit attachment (Mod 3885)	1	S97	C	CA2/71																	
EEAS13/1	Bolt, servo motor to control lever attachment	1	S11	C	CA2/72																	
EB8.45.1565	Bush (Mod 3885)	1	S96	C	CA2/73																	
EEAS14	Bush	1	S11	C	CA2/74																	
A27/GS	Nut, slotted, 5/16in. BSF	1	-	C	CA2/75																	
EEAS63/E	Nut, slotted, 1/4in. BSF	1	S96	C	CA2/76																	
EB8.45.1567	Piece, distance (Mod 3885)	1	S96	C	CA2/77																	
EEAS127	Piece, distance	1	S96	C	CA2/78																	
SP90/C8	Pin, split 1/16in. dia.	2	-	C	CA2/79																	



CANBERRA PR. Mk.9 ——— CONTROLS — AUTOMATIC PILOT



This file was downloaded
from the RTFM Library.

Link: www.scottbouch.com/rtfm

Please see site for usage terms,
and more aircraft documents.

