

CONTROLS  
ENGINE CONTROL - CENTRE FUSELAGE

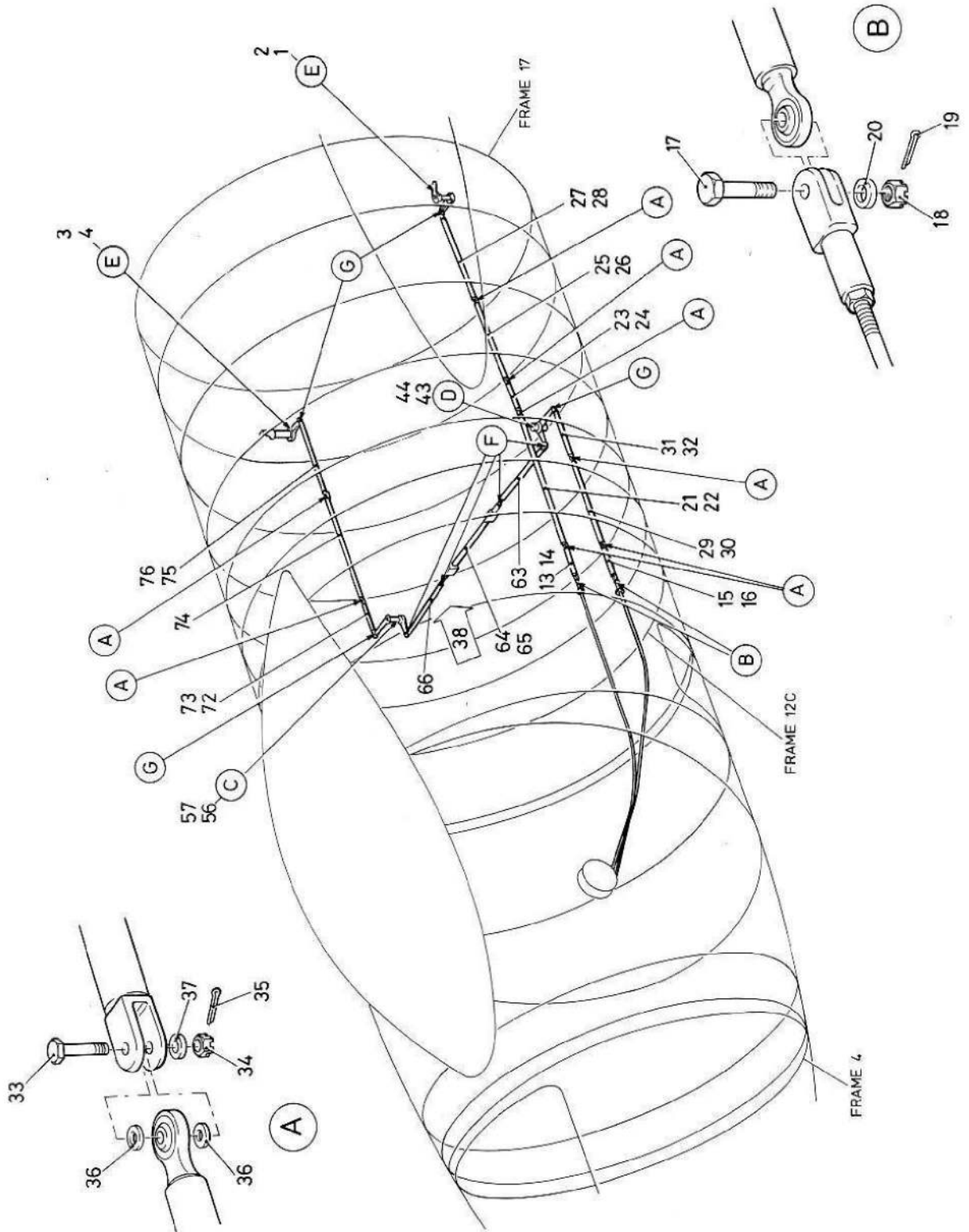
Part No.	Description	No. off	Material Specification	Class of Eqpt M.R. or L.M.	Plate						
						1	2	3	4	5	6
	CONTROLS ENGINE CENTRE FUSELAGE (EB8.47.231)	-	-	-							
	Spares for:										
EB8.47.45	LEVER Assembly, port (Pre Mod 5028 Pt A)	1	-	C	CC1/1						
EB8.47.45x3	LEVER Assembly, port (Mod 5028 Pt A)	1	-	-	CC1/2						R
EB8.47.46	LEVER Assembly, stbd (Pre Mod 5028 Pt A)	1	-	C	CC1/3						
EB8.47.46x3	LEVER Assembly, stbd (Mod 5028 Pt A)	1	-	-	CC1/4						R
	Spares for:										
EB8.47.533	EYE-END (Pre Mod 5028 Pt A)	2	-	C	CC2/5						
EB8.47.727	EYE-END (Mod 5028 Pt A)	2	-	C	CC2/6						
	Attachment of eye end to lever assy										
A24/JT Hoffman CJO	Nut, 3/8in. BSF	2	-	C	CC2/7						R
EB8.47.551	JOINT, self aligning	2	-	C	CC2/8						R
EB8.47.731	LEVER, port (Pre Mod 5028 Pt A)	1	-	C	CC2/9						
EB8.47.552	LEVER, port (Mod 5028 Pt A)	1	-	-	CC2/10						
EB8.47.732	LEVER, stbd (Pre Mod 5028 Pt A)	1	-	C	CC2/11						
EB8.47.659	LEVER, stbd (Mod 5028 Pt A)	1	-	-	CC2/12						
	ROD, control frames 12-12C port engine (Pre Mod 5028 Pt A, Pre Mod 4998)	1	-	C	CC1/13						
EB8.47.725	ROD, control frames 12-12C port engine (Mod 5028 Pt A, Pre Mod 4998)	1	-	C	CC1/14						
EB8.47.241	ROD, control frames 12-12C stbd engine (Pre Mod 5028 Pt A, Pre Mod 4998)	1	-	C	CC1/15						
EB8.47.691	ROD, control frames 12-12C stbd engine (Mod 5028 Pt A, Pre Mod 4998)	1	-	C	CC1/16						
	Attachment of rods to cables										
EB8.47.381	Bolt, 1/4in. BSF	2	S95	C	CC1/17						
A27/ES	Nut, 1/4in. BSF	2	-	C	CC1/18						
SP90/C7	Pin, split, 1/16in. dia.	2	-	C	CC1/19						
SP16/E	Washer	2	-	C	CC1/20						
EB8.47.243	ROD, control frames 12C-13 port engine (Pre Mod 4998)	1	-	C	CC1/21						
EB8.47.751	ROD, control port engine (Mod 4998)	1	-	C	CC1/22						
EB8.47.245	ROD, control frames 13-14 port engine (Pre Mod 5028 Pt A)	1	-	C	CC1/23						
EB8.47.693	ROD, control frames 13-14 port engine (Mod 5028 Pt A)	1	-	-	CC1/24						
EB8.47.247	ROD, control frames 14-15 port engine (Pre Mod 5028 Pt A)	1	-	C	CC1/25						
EB8.47.695	ROD, control frames 14-15 port engine (Mod 5028 Pt A)	1	-	-	CC1/26						
EB8.47.651	ROD, control frames 15-16 port engine (Pre Mod 5028 Pt A)	1	-	C	CC1/27						
EB8.47.717	ROD, control frames 15-16 port engine (Mod 5028 Pt A)	1	-	-	CC1/28						
EB8.47.251	ROD, control frames 12C-12D stbd engine (Pre Mod 4998)	1	-	C	CC1/29						

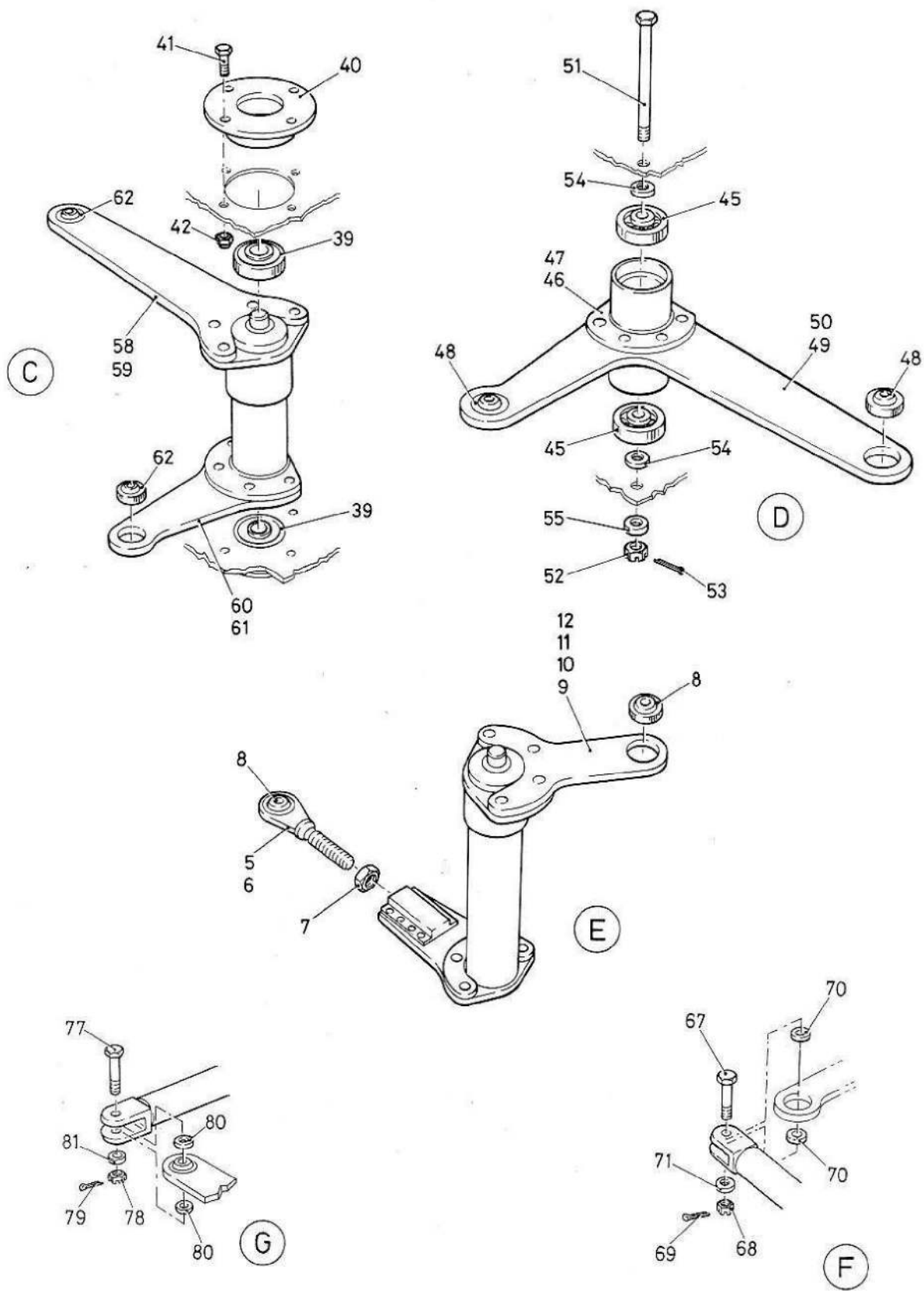
CONTROLS  
ENGINE CONTROLS - CENTRE FUSELAGE

Part No.	Description	No. off	Material Specification	Class of Eqpt M.R. or L.M.	Plate
EB8.47.753	ROD, control stbd engine (Mod 4998)	1	-	C	CC1/30
EB8.47.653	ROD, control frame 13 stbd engine (Pre Mod 5028 Pt A)	1	-	C	CC1/31
EB8.47.719	ROD, control frame 13 stbd engine (Mod 5028 Pt A)	1	-		CC1/32
	Attachments between rods and levers				
EEAS12	Bolt, 2BA	8	SLL	C	CC1/33
A27/CS	Nut, 2BA	8	-	C	CC1/34
SP90/C7	Pin, split 1/16in.dia.	8	-	C	CC1/35
SP15/C	Washer	16	-	C	CC1/36
SP16/C	Washer	8	-	C	CC1/37
	RODS, Control, Across Bulkhead 13 Assembly (EB8.47.237)	-	-	-	CC1/38
	Spares for:				
Hoffman CS3	BEARING, ball	2	-	L	CC2/39
EA2.47.65	HOUSING, ballrace	1	DTD683	C	CC2/40
	Attachment of housing to structure				
A25/4B	Bolt, 4BA	4	-	C	CC2/41
AGS2001/B1	Nut, 4BA	4	-	C	CC2/42
EB8.47.269	LEVER, complete port (Pre Mod 5028 Pt A)	1	-	L/MR	CC1/43
EB8.47.269x3	LEVER, complete port (Mod 5028 Pt A)	1	-		CC1/44
	Spares for:				
Hoffman CS1	BEARING, ball	2	-	C	CC2/45
EB8.47.271	HOUSING (Pre Mod 5028 Pt A)	1	-	C	CC2/46
EB8.47.699	HOUSING (Mod 5028 Pt A)	1	-		CC2/47
Hoffman CJ0	JOINT, self aligning	2	-	C	CC2/48
EA2.47.193	LEVER (Pre Mod 5028 Pt A)	1	-		CC2/49
EA2.47.325	LEVER (Mod 5028 Pt A)	1	-		CC2/50
	Attachment of lever to structure				
EB8.47.379	Bolt, 1/4in. BSF	1	S96	C	CC2/51
A27/ES	Nut, 1/4in. BSF	1	-	C	CC2/52
SP90/C7	Pin, split 1/16in. dia.	1	-	C	CC2/53
SP15/E	Washer	2	-	C	CC2/54
SP16/E	Washer	1	-	C	CC2/55
EB8.47.267	LEVER, complete stbd (Pre Mod 5028 Pt A)	1	-	L/MR	CC1/56
EB8.47.267x2	LEVER, complete stbd (Mod 5028 Pt A)	1	-		CC1/57
	Spares for:				
EB8.47.273	LEVER (Pre Mod 5028 Pt A)	1	-	C	CC2/58
EB8.47.703	LEVER (Mod 5028 Pt A)	1	-		CC2/59
EB8.47.275	LEVER (Pre Mod 5028 Pt A)	1	-	C	CC2/60
EB8.47.707	LEVER (Mod 5028 Pt A)	1	-		CC2/61
Hoffman CJ0	JOINT, self aligning	2	-	C	CC2/62

CONTROLS  
ENGINE CONTROLS - CENTRE FUSELAGE

Part No.	Description	No. off	Material Specification	Class of Eqpt. M.R. or L.M.	Plate							
						1	2	3	4	5	6	
EB8.47.261	ROD, control	1	-	C	CC1/63							R
EB8.47.263	ROD, control (Pre Mod 5028 Pt A)	1	-	C	CC1/64							R
EB8.47.729	ROD, control (Mod 5028 Pt A)	1	-	C	CC1/65							R
EB8.47.265	ROD, control	1	-	C	CC1/66							R
Attachment between rods and levers												
EEAS12	Bolt, 2BA	4	S11	C	CC2/67							R
A27/CS	Nut, 2BA	4	-	C	CC2/68							R
SP90/C7	Pin, split 1/16in. dia.	4	-	C	CC2/69							R
SP15/C	Washer	8	-	C	CC2/70							R
SP16/C	Washer	4	-	C	CC2/71							R
EB8.47.655	ROD, control stbd. engine frames 13-14 (Pre Mod 5028 Pt A)	1	-	C	CC1/72							R
EB8.47.721	ROD, control stbd. engine frames 13-14 (Mod 5028 Pt A)	1	-		CC1/73							R
EB8.47.257	ROD, control stbd. engine frames 14-15	1	-	C	CC1/74							R
EB8.47.657	ROD, control stbd. engine frames 15-16 (Pre Mod 5028 Pt A)	1	-	C	CC1/75							R
EB8.47.723	ROD, control stbd. engine frames 15-16 (Mod 5028 Pt A)	1	-		CC1/76							R
Attachment between rods and levers												
EEAS12	Bolt, 2BA	4	S11	C	CC2/77							R
A27/CS	Nut, 2BA	4	-	C	CC2/78							R
SP90/C7	Pin, split 1/16in. dia.	4	-	C	CC2/79							R
SP15/C	Washer	8	-	C	CC2/80							R
SP16/C	Washer	4	-	C	CC2/81							R





This file was downloaded from the RTFM Library.  
Link: [www.scottbouch.com/rtfm](http://www.scottbouch.com/rtfm)

Please see site for usage terms, and more aircraft documents.

