

CONTROLS
ENGINE CONTROLS - PORT WING

Part No.	Description	No. off	Material Specification	Class of Eqpt M.R. or L.M.	Plate
-	CONTROLS, ENGINE, IN PORT WING (EB8.47.11)	-	-	-	
	Spares for:				
-	CONTROLS, Wing to Engine Assembly (Pre Mod 3893) (EB8.47.15)	-	-	-	CD1/1
	Spares for:				
EB8.00.436	ROD, Control, Inboard, Group	1	-	L	CD3/2
	Spares for:				
EB8.47.83	ADAPTOR, female, R.H.	1	S1	MR	CD3/3
EB8.47.85	ADAPTOR, female, L.H.	1	S1	MR	CD3/4
EB8.47.89	EYE-END	1	-	MR	CD3/5
EB8.47.87	FORK-END	1	-	C	CD3/6
A27/GT	NUT, thin 5/16in. BSF	2	-	C	CD3/7
A27/GTL	NUT, thin 5/16in. BSF, L.H.	1	-	C	CD3/8
SP28/E6	PIN, taper	4	-	C	CD3/9
EB8.47.449	TUBE	1	-	-	CD3/10
SP8/Y6	TURNBUCKLE	1	-	C	CD3/11
-	CONTROLS, Wing to Engine Assembly (Mod 3893) (EB8.47.675)				CD1/12
	Spares for:				
EB8.47.669	ROD, Control, Inboard, Group	1	-	L	CD3/13
	Spares for:				
EB8.47.83	ADAPTOR, female, R.H.	1	S1	MR	CD3/14
EB8.47.85	ADAPTOR, female, L.H.	1	S1	MR	CD3/15
Rolls Royce BR.5408	BALL JOINT	1	-	C	CD3/16
EB8.47.87	FORK-END	1	-	C	CD3/17
Rolls Royce D.48532	HOUSING	1	-	C	CD3/18
A27/GT	NUT, thin 5/16in. BSF	2	-	C	CD3/19
A27/GTL	NUT, thin 5/16in. BSF, L.H.	1	-	C	CD3/20
SP28/E6	PIN, taper	4	-	C	CD3/21
EB8.47.449	TUBE	1	-	-	CD3/22
SP8/Y6	TURNBUCKLE	1	-	-	CD3/23
	Attachment of rod to bellcrank and engine bracket				
EB8.47.113	Bolt "D"	1	S95	C	CD3/24
A30/6E	Bolt, 1/4 in. BSF	1	-	C	CD3/25
A27/CP	Nut, 2BA.	1	-	C	CD3/26
A27/ES	Nut slotted, 1/4 in. BSF	1	-	C	CD3/27
SP9/C8	Pin, split	1	-	C	CD3/28
BA46145	Piece, distance	2	-	C	CD3/29
EB8.47.115	Washer, tab	1	DTD.124	C	CD3/30
SP13/E	Washer, 1/4 in.	1	-	C	CD3/31

CONTROLS
ENGINE CONTROLS - PORT WING

Part No.	Description	No. off	Material Specification	Class of Eqpt M.R. or L.M.	Plate	
	LEVERS, Control at Ribs 1-2 Assembly Port (EB8.47.423)	-	-	-	CD1/32	R
	Spares for:					
Hoffman T17	BEARING	2	-	C	CD2/33	R
AGS2031/22	CIRCLIP, 1 1/16 in. o/d shaft (ext. type)	1	-	C	CD2/34	
EB8.47.445	COVER, dust	1	DTD634	C	CD2/35	
	Attachment of cover to rib					
A25/2B	Bolt, 4BA.	6	-	C	CD2/36	
AGS2001/B1	Nut, 4BA.	6	-	C	CD2/37	
SP15/B	Washer, 4BA.	6	-	C	CD2/38	
EB8.47.93	EYE-END c/w bearing (Pre Mod 5028 Pt A)	1	-	MR	-	R
EB8.47.739	EYE-END c/w bearing (Mod 5028 Pt A) (Pre Mod 5000 ALT SB/9/088)	1	-	-	CD2/39	R
EB8.47.773	EYE-END c/w bearing (Mod 5000 ALT SB/9/088)	1	S99	-	CD2/40	R
EB8.47.133	HOUSING, bearing	2	L65	C	CD2/41	
EB8.47.65	LEVER, arm (Pre Mod 5028 Pt A)	1	-	MR	CD2/42	
EB8.47.683	LEVER, arm (Mod 5028 Pt A)	1	-	-	CD2/43	
EB8.47.131	LOCKNUT	1	S1	MR	CD2/44	
EB8.47.447	PLATE, dust	1	L72	C	CD2/45	
	Attachment of housing and plate to rib					
A25/2B	Bolt, 4BA.	6	-	C	CD2/46	
AGS2001/B1	Nut, 4BA.	6	-	C	CD2/47	
SP15/B	Washer, 4BA.	6	-	C	CD2/48	
EB8.47.129	SPINDLE	1	S1	MR	CD2/49	
	LEVER, Bell Crank, Assembly (EB8.47.39)	-	-	-	CD1/50	R
	Spares for:					
EB8.47.165	LEVER, Group (Pre Mod 5028 Pt A)	1	-	C	CD1/51	
EB8.47.165x3	LEVER, Group (Mod 5028 Pt A)	1	-	-	CD1/52	R
	Spares for:					
EB8.47.585	EYE-END, c/w bearing (Pre Mod 5028 Pt A)	1	-	C	CD3/53	
EB8.47.711	EYE-END, c/w bearing (Mod 5028 Pt A)	1	-	C	CD3/54	
	Attachment of eye-end to lever.					
A27/JT Hoffman	Nut, thin, 3/8 in. BSF	1	-	C	CD3/55	R
CJ0	JOINT, self sligning	1	-	C	CD3/56	R
EB8.47.155	LEVER, (Pre Mod 5028 Pt A)	1	-	-	CD3/57	
EB8.47.743	LEVER, (Mod 5028 Pt A)	1	-	-	CD3/58	
	Attachment of lever to mounting					
SP4/Z/F25	Pin, shackle, 5/16 in. dia.	1	-	C	CD3/59	
SP28/E6	Pin, taper	2	-	C	CD3/60	

CONTROLS
ENGINE CONTROLS - PORT WING

Part No.	Description	No. off	Material Specification	Class of Eqpt M.R. or L.M.	Plate
SP13/G EB8.47.163	Washer, 5/16 in. MOUNTING, lever	1 1	- -	C C	CD3/61 CD3/62
	Attachment of mounting to inboard engine rib				
A25/2C AGS2001/C1 SP13/C EB8.47.61	Bolt, 2BA Nut, 2BA Washer, 2BA ROD, Control, Group Between Levers in Fuselage and Rib 1 Spares for:	4 4 4 1	- - - -	C C C C	CD3/63 CD3/64 CD3/65 CD3/66
EB8.47.87	FORK-END, assembly Attachment of fork-end to rod	1	-	C	CD2/67
A27/GT	Nut, 5/16 in. BSF Attachment of rod to lever at rib 1	1	-	C	CD2/68
EB8.47.113 A27/CP EB8.47.115	Bolt, "D" Nut, 2BA Washer, tab Attachment of rod to fuselage lever	1 1 1	S95 - DTD124	C C C	CD2/69 CD2/70 CD2/71
EEAS12 A27/CS SP90/C8 SP15/C SP16/C EB8.47.521	Bolt, 2BA Nut, 2BA Pin, split Washer, 2BA Washer, 2BA ROD, Control Lever at rib 1 and torque tube complete (Pre Mod 5171)	1 1 1 1 1 2	- - - - - -	C C C C C C	CD2/72 CD2/73 CD2/74 CD2/75 CD2/76 CD1/77
EB8.47.767	ROD, Assembly Control Port (Mod 5171) Spares for:	1	-	C	CD1/78
EB8.47.769 A27/GT A27/GTL SP28/G6 SP8/Y6	FORK-END, cranked port (Mod 5171) NUT, 5/16 in. BSF NUT, LH 5/16 in. BSF PIN, taper TURNBUCKLE Attachment of rod to lever at rib 1	1 1 1 6 1	- - - - -	C C C C C	CD2/79 CD2/80 CD2/81 CD2/82 CD2/83
EEAS12 AS1242/6C A27/CS SP90/C8 SP15/C SP16/C EB8.47.63	Bolt, 2BA Bolt, 2BA Nut, 2BA Pin, split Washer, 2BA Washer, 2BA ROD, Link, Torque Tube to Bell Crank Assembly	1 1 2 2 4 2 1	S11 - - - - - -	C C C C C C C	CD2/84 CD2/85 CD2/86 CD2/87 CD2/88 CD2/89 CD1/90

CONTROLS
ENGINE CONTROLS - PORT WING

Part No.	Description	No. off	Material Specification	Class of Eqpt M.R. or L.M.	Plate
	Spares for:				
EB8.47.87	FORK-END, assembly	2	-	C	CD2/91
A27/GT	NUT, 5/16 in. BSF	2	-	C	CD2/92
EB8.47.95	ROD, link	1	S1	C	CD2/93
	Attachment of rod to torque tube and bell crank				
EB8.47.113	Bolt, "D"	2	S95	C	CD2/94
A27/CP	Nut, 2BA	2	-	C	CD2/95
EB8.47.115	Washer, tab	2	DTD124	C	CD2/96
	TORQUE TUBE, Assembly (EB8.47.35)	-	-	-	CD1/97
	Spares for:				
EB8.47.91	EYE-END, c/w bearing (Pre Mod 5028 Pt A)	1	-	C	CD2/98
EB8.47.685	EYE-END, c/w bearing (Mod 5028 Pt A)	1	-	C	CD2/99
	Attachment of eye-end to plug end				
A24/GT	Nut, 5/16 in. BSF	1	-	C	CD2/100
EB8.47.65	LEVER, arm (Pre Mod 5028 Pt A)	1	-	C	CD2/101
EB8.47.683	LEVER, arm (Mod 5028 Pt A)	1	-	C	CD2/102

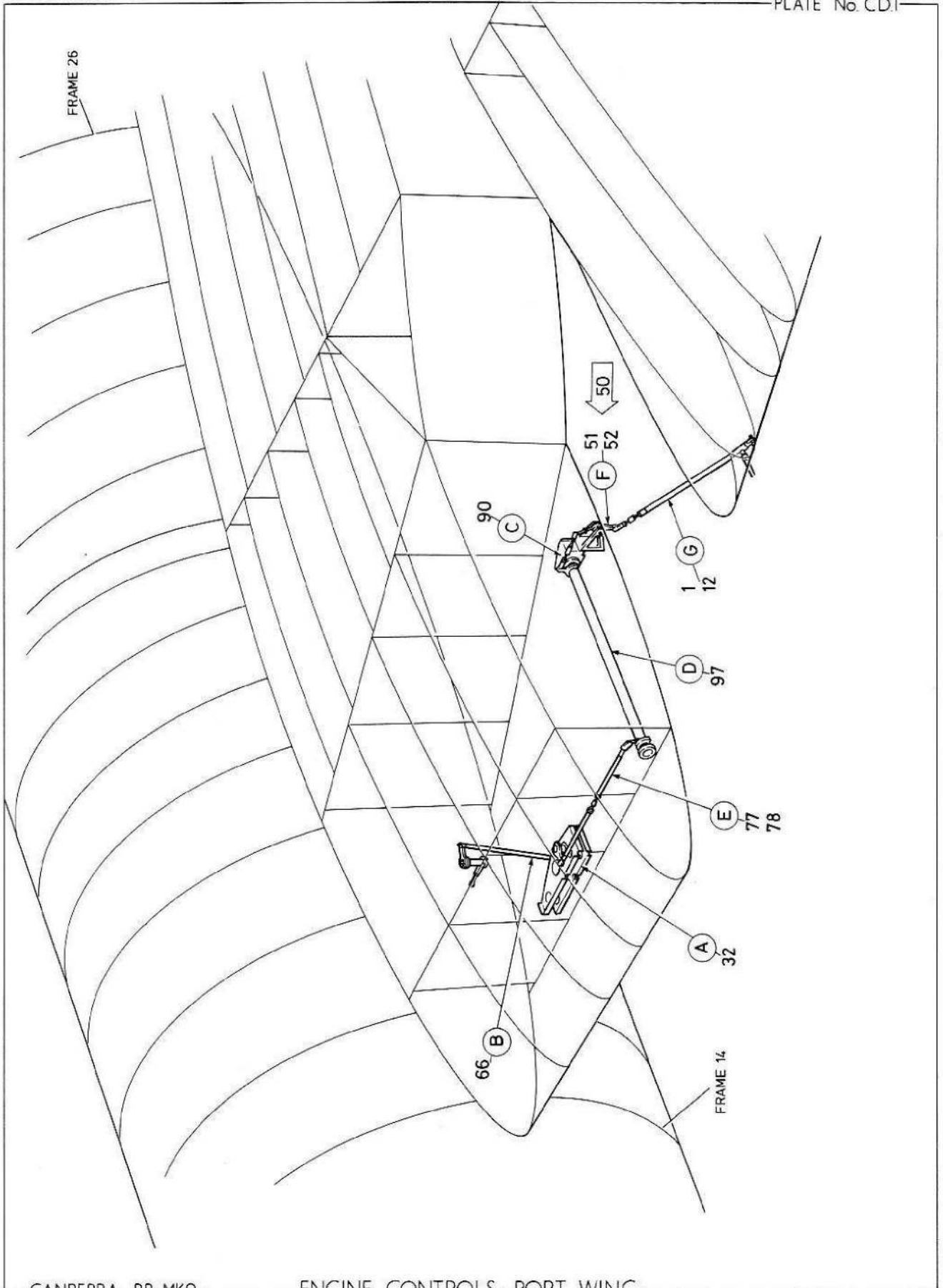
R

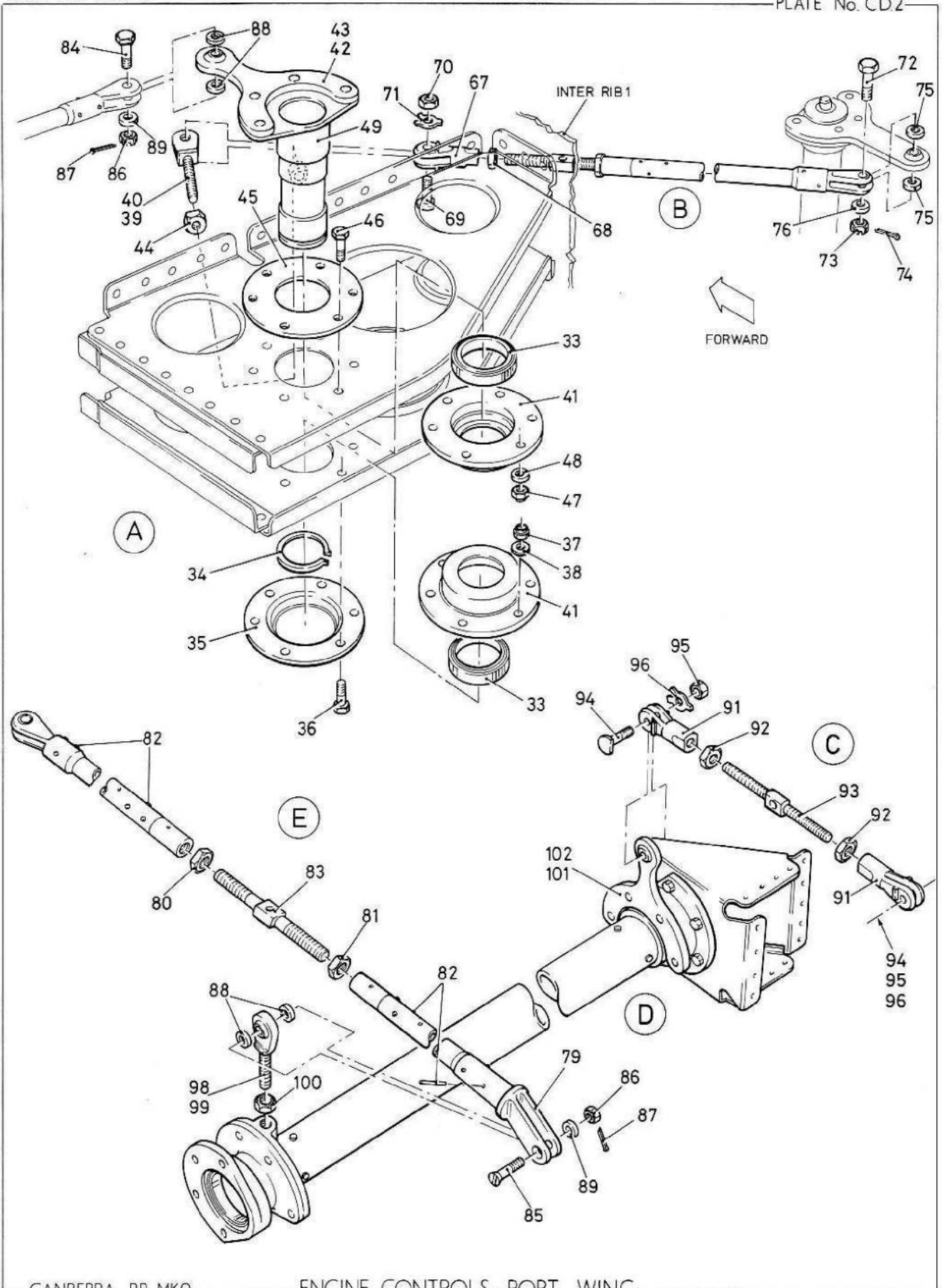
CONTROLS
ENGINE CONTROLS - STARBOARD WING

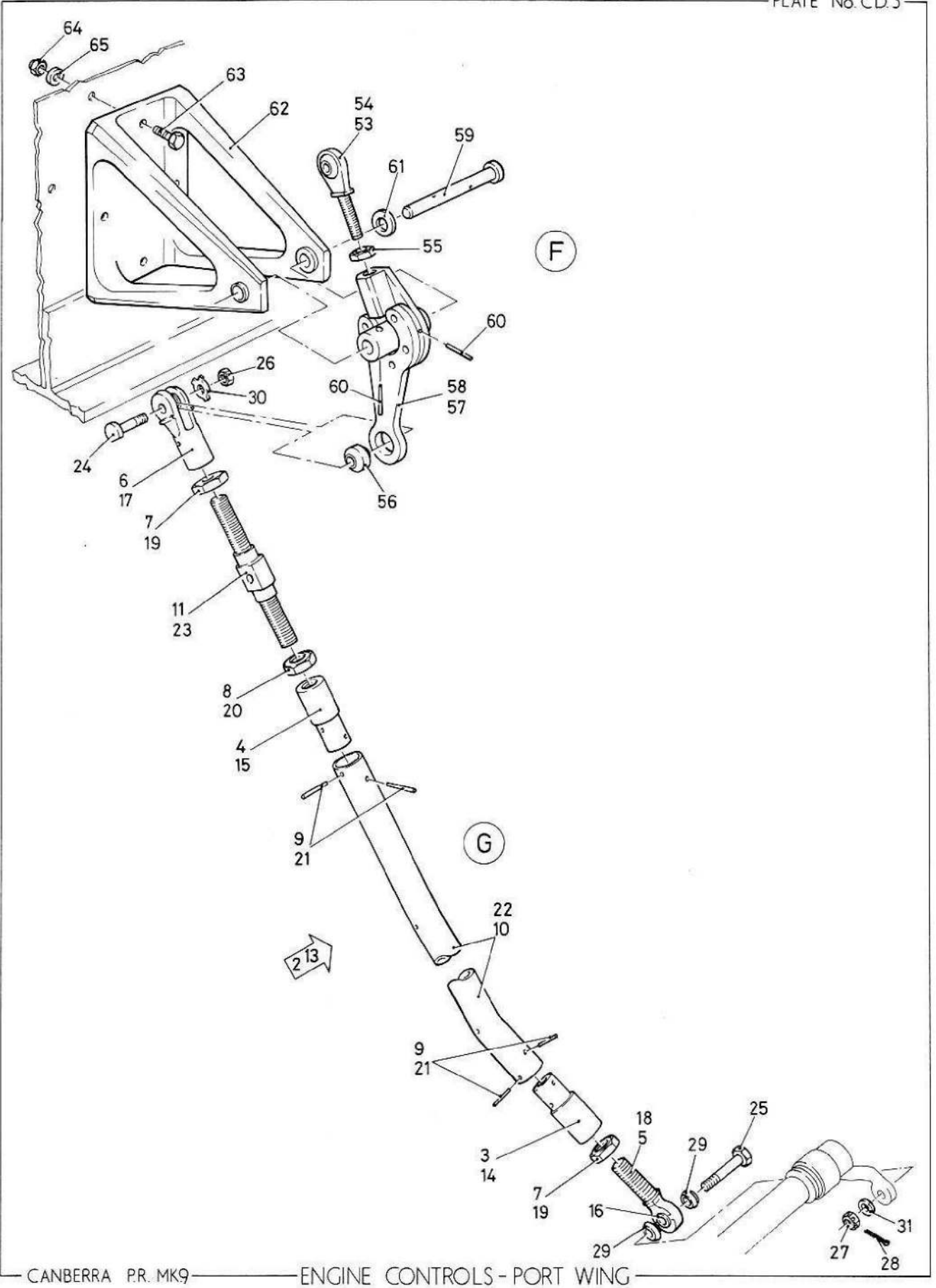
Part No.	Description	No. off	Material Specification	Class of Eqpt M.R. or L.M.	Plate
EB8.47.671	ROD, Control, Wing to Engine, Group (Mod 3893)	1	-	C	CD4/31
	Spares for:				
EB8.47.189	EYE-END, (Pre Mod 3893)	1	-	C	CD6/32
EB8.47.677	EYE-END, (Mod 3893)	1	-	C	CD6/33
EB8.47.597	FORK-END, c/w bushes (Mod 2923)	1	-	C	CD6/34
	Attachment of fork-end to control rod				
A27/GT	Nut, thin, 5/16 in. BSF	1	-	C	CD6/35
	Attachment of rod to levers				
A30/7E	Bolt, 1/4 in. BSF	2	-	C	CD6/36
A27/ES	Nut, 1/4 in. BSF	2	-	C	CD6/37
AS2808/6/025	Piece, distance	2	T35 17swg	LM	CD6/38
SP90/C8	Pin, split	2	-	C	CD6/39
SP13/E	Washer, 1/4 in.	2	-	C	CD6/40
EB8.47.521	ROD, control torque tube to lever at rib 1 complete (Pre Mod 5171)	2	-	-	CD4/41
EB8.47.768	ROD, Assembly Control Stbd (Mod 5171)	1	-	C	CD4/42
	Spares for:				
EB8.47.770	FORK-END cranked stbd (Mod 5171)	1	-	C	CD5/43
A27/GT	NUT, 5/16 in. BSF	1	-	C	CD5/44
A27/GTL	NUT, LH 5/16 in. BSF	1	-	C	CD5/45
SP28/G6	PIN, taper	6	-	C	CD5/46
SP8/Y6	TURNBUCKLE	1	-	C	CD5/47
	Attachment of rod to levers				
EEAS12	Bolt, 2BA	1	S11	C	CD5/48
AS1242/6C	Bolt, csk. 2BA	1	-	C	CD5/49
A27/CS	Nut, 2BA	2	-	C	CD5/50
SP90/C8	Pin, split	2	-	C	CD5/51
SP15/C	Washer, 2BA	4	-	C	CD5/52
SP16/C	Washer, 2BA	2	-	C	CD5/53
EB8.47.61	ROD, Group Control, Levers at Rib 1 to Fuselage Levers	1	-	C	
	Spares for:				
EB8.47.87	FORK-END, assembly	1	-	C	CD5/55
	Attachment of rod to lever at rib 1				
EB8.47.113	Bolt, "D"	1	S95	C	CD5/56
A27/CP	Nut, 2BA	1	-	C	CD5/57
EB8.47.115	Washer, tab	1	DTD124	C	CD5/58
	Attachment of rod to fuselage lever				
EEAS12	Bolt, 2BA	1	S11	C	CD5/59
A27/CS	Nut, 2BA	1	-	C	CD5/60
SP90/C8	Pin, split	1	-	C	CD5/61
SP15/C	Washer, 2BA	2	-	C	CD5/62

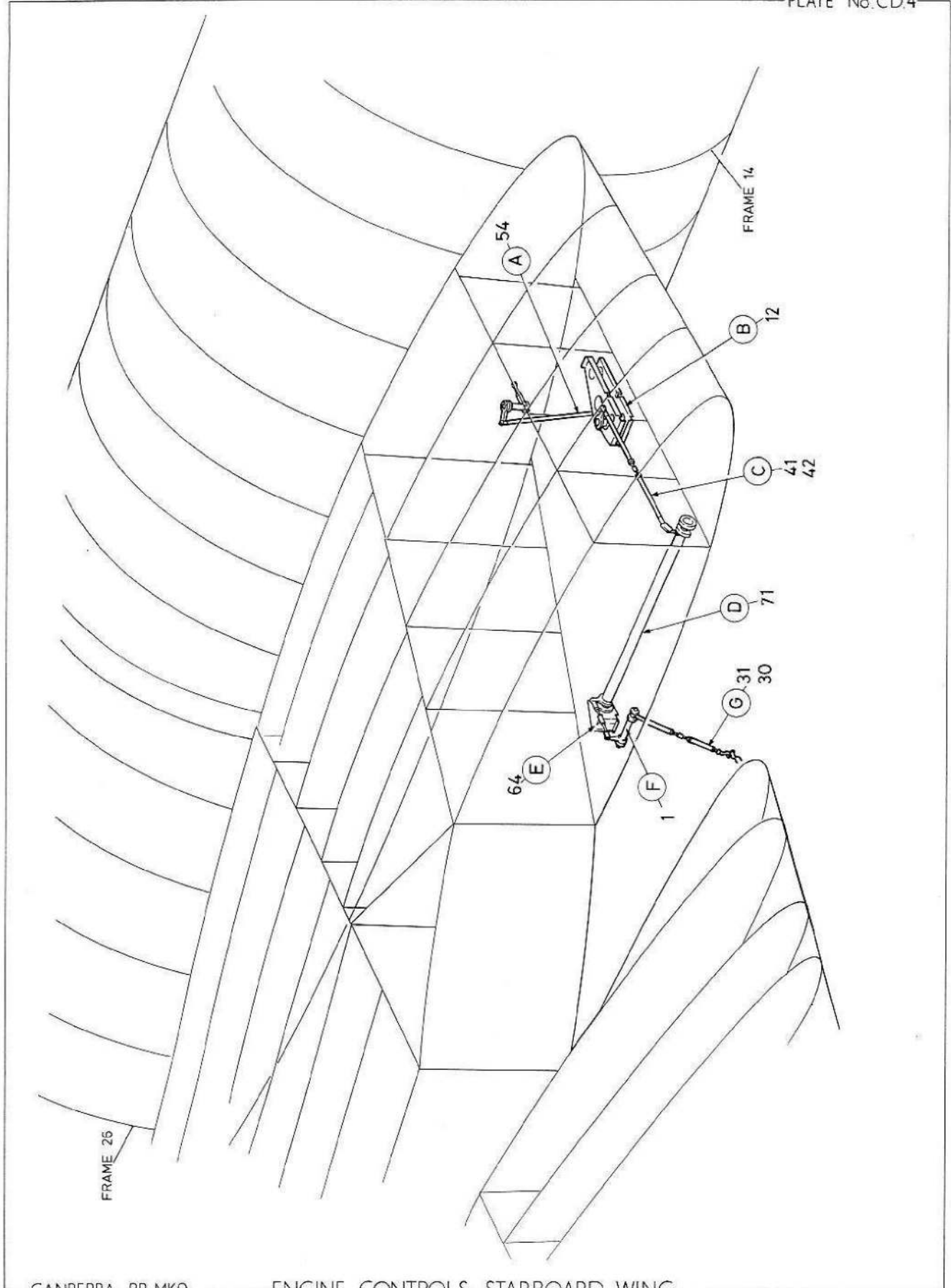
CONTROLS
ENGINE CONTROLS - STARBOARD WING

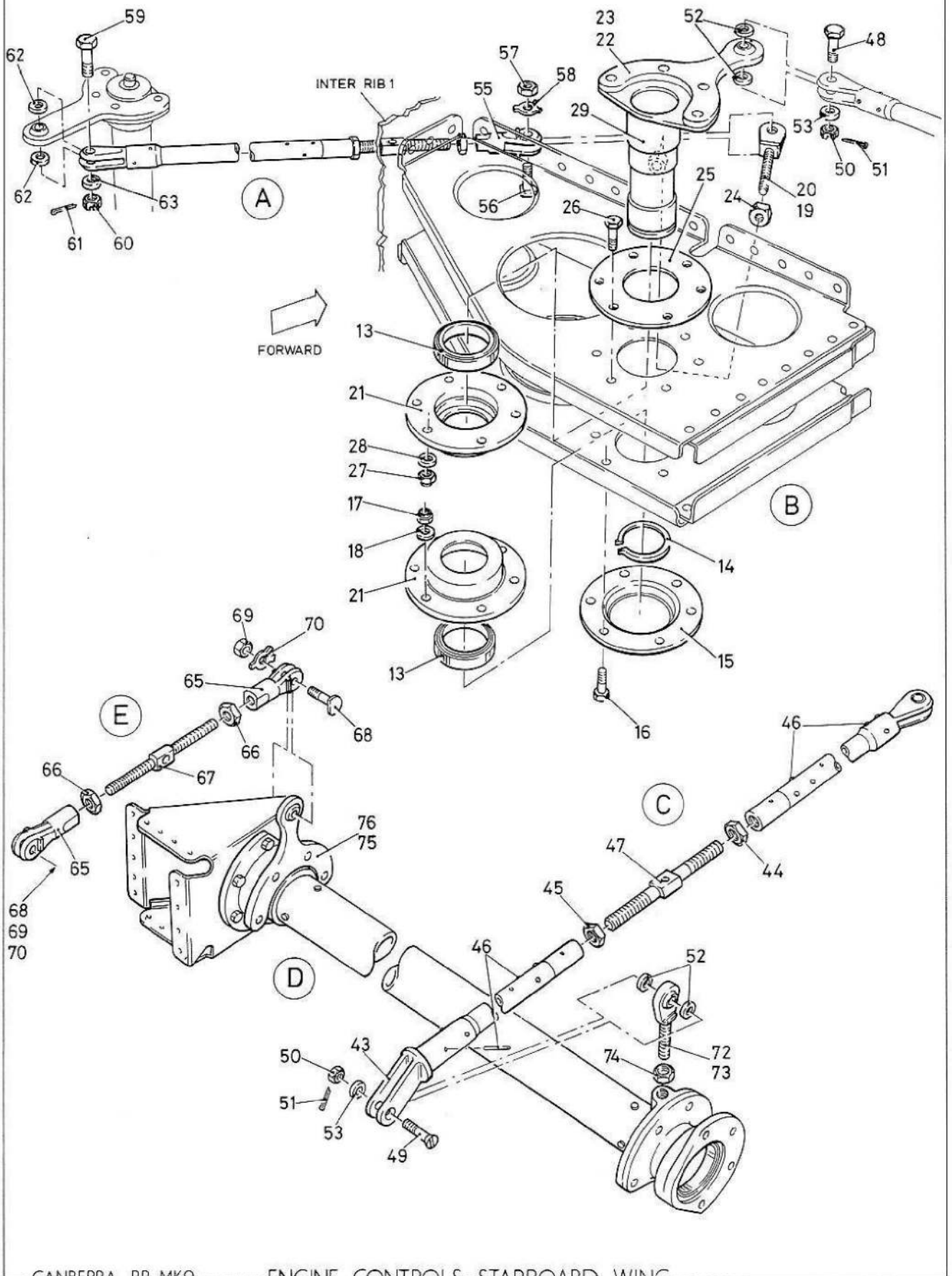
Part No.	Description	No. off	Material Specification	Class of Eqpt. M.R. or L.M.	Plate							
						1	2	3	4	5	6	
SP16/C EB8.47.63	Washer, 2BA ROD, link, Torque Tube to Bell Crank Assembly	1 1	- -	C C/MR	CD5/63 CD4/64							R R
	Spares for:											
EB8.47.87	FORK-END, assembly	2	-	C	CD5/65							R
A27/GT	NUT, 5/16 in. BSF	2	-	C	CD5/66							R
EB8.47.95	ROD, link	1	S1	C	CD5/67							R
	Attachment of rod to torque and bell crank											
EB8.47.113	Bolt, "D"	2	S95	C	CD5/68							R
A27/CP	Nut, 2BA	2	-	C	CD5/69							R
EB8.47.115	Washer, tab	2	DTD124	C	CD5/70							R
	TORQUE TUBE, Assembly (EB8.47.35)	-	-	-	CD4/71							R
	Spares for:											
EB8.47.91	EYE-END c/w bearing (Pre Mod 5028 Pt A)	1	-	C	CD5/72							R
EB8.47.685	EYE-END c/w bearing (Mod 5028 Pt A)	1	-	-	CD5/73							R
	Attachment of eye-end to plug-end.											
A24/GT	Nut	1	-	C	CD5/74							R
EB8.47.65	LEVER, Arm (Pre Mod 5028 Pt A)	1	-	MR	CD5/75							R
EB8.47.683	LEVER, Arm (Mod 5028 Pt A)	1	-	-	CD5/76							R

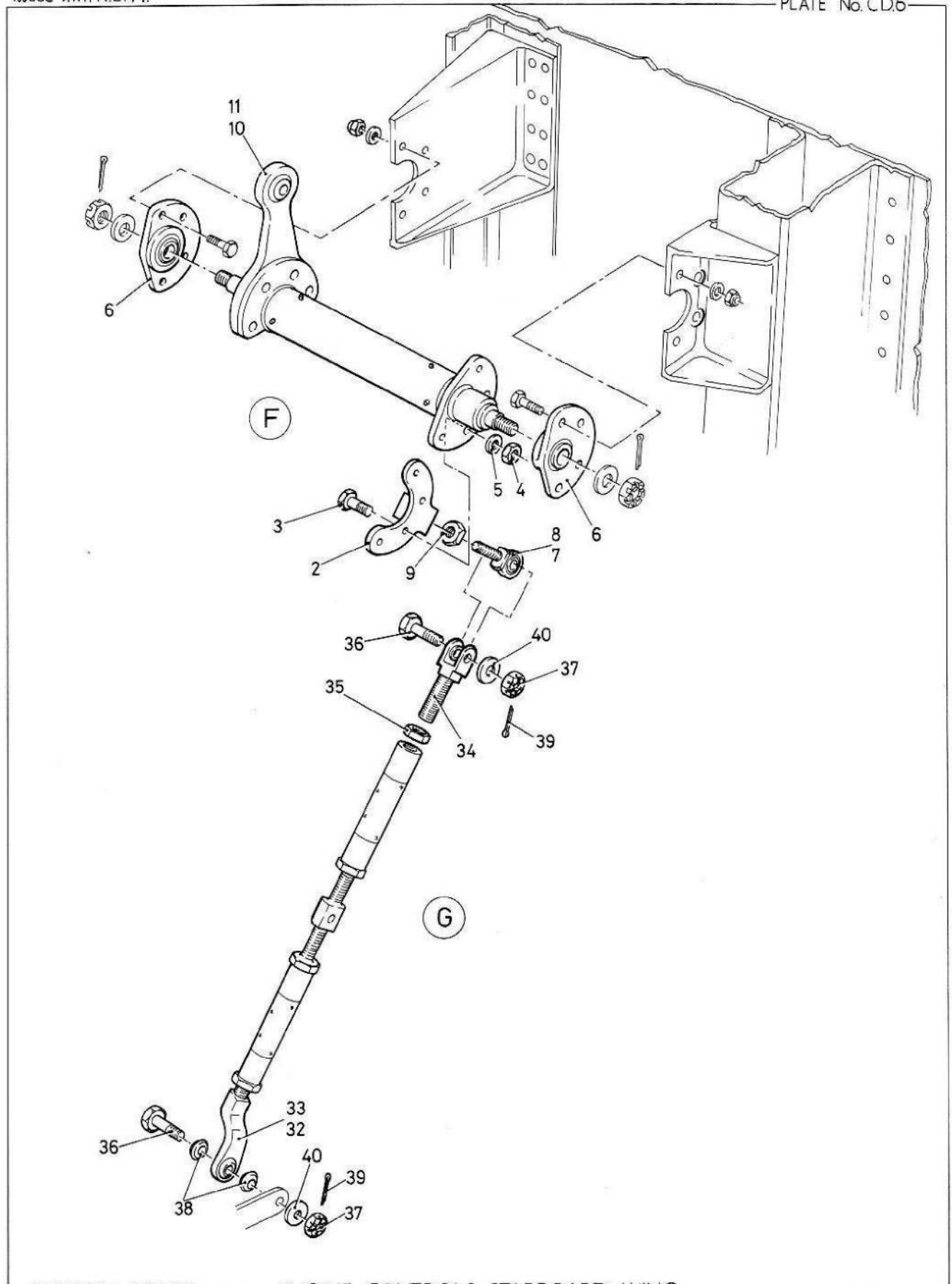












This file was downloaded
from the RTFM Library.

Link: www.scottbouch.com/rtfm

Please see site for usage terms,
and more aircraft documents.

