

CONTROLS
FLYING CONTROLS CENTRE FUSELAGE

Part No.	Description 1 2 3 4 5 6	No. off	Material Specification	Class of Eqpt M.R. or L.M.	Plate
-	CONTROLS, FLYING, CENTRE FUSELAGE (EB8.45.17)	-	-	-	-
-	CONTROLS, Aileron Bulkhead frame 21B Assembly (Mod 3359) (EB8.45.1447)	-	-	-	-
	Spares for:				
Hoffman T17	BEARING, ball, lever shaft	6	-	C	CF1/1
EB8.45.1509	BOLT, stop stbd lever	2	S114	C	CF1/2
	Attachment of stop bolt to bracket				
A27/GT	Nut, thin 5/16 in. BSF	2	-	C	CF1/3
EB8.45.1517	BRACKET, mounting, port lever assy.	1	DTD683	C	CF2/1
	Attachment of bracket to bulkhead				
A25/2C	Bolt, 2BA	4	-	C	CF1/4
					CF2/2
A25/3C	Bolt, 2BA	4	-	C	CF2/3
AGS2001/C1	Nut, stiff, 2BA	2	-	C	CF2/4
EB8.46.1519	Washer, radius	2	L72x12SWG	LM	CF2/5
EB8.45.1521	Washer, tapered radius	2	L72	LM	CF2/6
EB8.45.1455	BRACKET, mounting stbd lever assy	1	DTD683	C	CF1/5
	Attachment of bracket to bulkhead				
A25/3C	Bolt, 2BA	10	-	C	CF2/7
AGS2001/C1	Nut, stiff, 2BA	10	-	C	CF2/8
EB8.45.1511	Washer, radius	5	L73x10SWG	LM	CF2/9
EB8.45.1523	Washer, radius	5	L73x10SWG	LM	CF2/10
139/2EAP	CUT-OUT, excess torque, type C40	1	-	P	CF1/6
	Attachment of cut-out to lever				
A25/2C	Bolt, 2BA	6	-	C	CF1/7
30A/9140209	Wire locking (20 swg)	AR	-	C	CF1/8
EA2.45.83	HOUSING, bearing, upper port and stbd lever shafts	2	DTD683	C	CF1/9
	Attachment of housing to bulkhead				
AS2230/406	Rivet, csk. 1/8 in. dia.	8	-	C	CF1/10
EA2.45.81	HOUSING, bearing, centre, port lever shaft	2	L40	C	CF1/11
	Attachment of housing to bulkhead				
A25/2B	Bolt, 4BA	14	-	C	CF1/12
AGS2001/B1	Nut, stiff 4BA	14	-	C	CF1/13
SP13/B	Washer, 4BA	14	-	C	CF1/14
EA1.45.251	HOUSING, bearing lower, port lever shaft	1	L40	C	CF2/11

CONTROLS
FLYING CONTROLS CENTRE FUSELAGE

Part No.	Description	No. off	Material Specification	Class of Eqpt M.R. or L.M.	Plate								
						1	2	3	4	5	6		
	Attachment of housing to bulkhead												
SP80/406	Rivet, 1/8in. dia.	8	-	C	CF2/12								
EB8.45.1513	HOUSING, bearing, lower stbd lever shaft	1	DTD5054	C	CF1/15								
	Attachment of housing to bulkhead												
A25/3B	Bolt, 4BA	6	-	C	CF1/16								
SP13/B	Washer, 4BA	6	-	C	CF1/17								
EB8.45.1425	LEVER, Aileron Servo Motor	1	-	L	CF2/13								
	Spares for:												
Skefco	BEARING, ball	1	-	C	CF2/14								
CBA2	HOUSING, bearing	1	L40	C	CF2/15								R
EEAS3/D	WASHER, packing	2	DTD390	C	CF2/16								R
EEAS4/20C													
	Attachment of lever to cut-out												
A25/2C	Bolt, 2BA	6	-	C	CF2/17								
30A/9140209	Wire, locking (20 swg)	AR	-	C	CF2/18								
EB8.45.1451	LEVERS, Aileron and Servo Motor, Port Group	1	-	L	CF1/18								
	Spares for:												
EB8.45.1485	LEVER, Control Tube and Actuator Group	1	-		CF1/19								
	Spares for:												
Skefco	BEARING, ball	1	-	C	CF1/20								R
CBA2	HOUSING, bearing	1	L40	C	CF1/21								R
EEAS3/D	WASHER, packing	2	DTD390	C	CF1/22								R
EEAS4/20C													
	Attachment of lever to lower socket												
A25/4C	Bolt, 2BA	6	-	C	CF1/23								
A27/CP	Nut, 2BA	6	-	C	CF1/24								
SP13/C	Washer, 2BA	6	-	C	CF1/25								
EB8.45.1419	LEVER, Aileron and Servo Motor, Group	1	-	L	CF1/26								
	Spares for:												
Skefco	BEARING, ball	2	-	C	CF1/27								R
CBA2	HOUSING, bearing	2	-	C	CF1/28								R
EEAS3/D	WASHER, packing	4	DTD390	C	CF1/29								R
EEAS4/20C													
	Attachment of lever to lower socket												
SP80/610	Rivet, 3/16in. dia.	6	-	C	CF1/30								

CONTROLS
FLYING CONTROLS CENTRE FUSELAGE

Part No.	Description	No. off	Material Specification	Class of Eqpt M.R. or L.M.	Plate						
						1	2	3	4	5	6
EB8.45.1489	SOCKET, upper bearing	1	DTD5054	-	CF1/31						
	Attachment of socket to tube										
EEAS37/2A	Nipple	4	-	C	CF1/32						R
EEAS38/2A	Spoke (make from 28R/6124)	2	-	LM	CF1/33						R
EA2.45.577	LEVER, idler c/w bearings	1	-	C	CF1/34						
EB8.45.1453	LEVERS, Aileron Stbd, Group	1	-	L	CF1/35						
	Spares for:										
EB8.45.1493	LEVER, lower	1	DTD5040	-	CF1/36						
	Attachment of lever to lower socket										
A25/7C	Bolt, 2BA	6	-	C	CF1/37						
A27/CP	Nut, 2BA	6	-	C	CF1/38						
SP13/C	Washer, 2BA	6	-	C	CF1/39						R
EA2.45.75	LEVER, Upper Group	1	-	-	CF1/40						
	Spares for:										
Skefco	BEARING, ball	2	-	C	CF1/41						R
CBA2	HOUSING, bearing	2	L40	C	CF1/42						R
EEAS3/D	Washer, packing	4	DTD390	C	CF1/43						R
EEAS4/20C	Attachment of lever to upper socket										
SP80/610	Rivet, 3/16in. dia.	6	-	C	CF1/44						
EB8.45.1497	SOCKET, lower	1	DTD5054	-	CF1/45						
EA2.45.77	SOCKET, upper	1	DTD683	-	CF1/46						
	Attachment of socket to tube										
EEAS37/2A	Nipple	8	-	C	CF1/47						R
EEAS38/2A	Spoke (Make from 28R/6124)	4	-	LM	CF1/48						R
EAP113	MOUNTING, servomotor, type B	1	-	P	CF1/49						
	Attachment of mounting to bracket										
A25/3E	Bolt, 1/4in. BSF	3	-	C	CF2/19						
AS1242/4E	Bolt, csk. 1/4in. BSF	3	-	C	CF2/20						
A27/ES	Nut, slotted, 1/4in. BSF	6	-	C	CF2/21						
SP90/C8	Pin, split 1/16in. dia	6	-	C	CF2/22						
386EAP	SERVOMOTOR, type D	1	-	L	CF1/50						
EB8.45.1449	TUBE, Control and Actuator Group (Pre Mod 4930)	1	-	L	CF1/51						
EB8.45.1793	TUBE, Control and Actuator Group (Mod 4930 Pre Mod 5150)	1	-	-	CF1/52						
EB8.45.1793x2	TUBE, Control and Actuator Group (Mod 5150 Pre Mod 5743)	1	-	-	CF1/53						R
EB8.45.1851	TUBE, Control and Actuator Group (Mod 5743)	1	-	-	CF1/54						

CONTROLS
FLYING CONTROLS CENTRE FUSELAGE

Part No.	Description	No. off	Material Specification	Class of Eqpt M.R. or L.M.	Plate
	Spares for:				
602/2EAP	ACTUATOR, linear (Pre Mod 5150) (Not supplied with spare control tube)	1	-	P	CF1/55
602/3EAP	ACTUATOR, linear (Mod 5150) (Not supplied with spare control Tube)	1	-	P	CF1/56
	Attachment of actuator to control tube				
A25/27E	Bolt, 1/4in. BSF	3	-	C	CF1/57
A27/EP	Nut 1/4in. BSF	3	-	C	CF1/58
EEAS28/15JR	Washer, distance	6	-	C	CF1/59
SP13/E	Washer	6	-	C	CF1/60
EEAS170 Mk.2	FORK END, adjustable (Mod 3570)	1	DTD683	C	CF1/61
EB8.45.1529	TUBE, Control, Group (Not required with Roll Damper Installation) (Pre Mod 4930)	1	-	L	CF1/62 CF2/23
EB8.45.1791	TUBE, Control, Group (Not required with Roll Damper Installation) (Mod 4930)	1	-	-	CF2/24 CF1/63
	Attachment of eye-end to tube				
A29/NP	Nut, 1/2in. BSF	1	-	C	CF2/26
EB8.45.1515	FORK-END	1	DTD683	C	CF1/64
	Attachment of fork-end tube				
EEAS37/2A	Nipple, 1/4in. dia	4	-	C	CF1/65
EEAS38/2A	Spoke, 4BA (Make from 28R/6124)	2	-	LM	CF1/66
	Attachment of control and actuator tube or control tube to levers				
EEAS13/1	Bolt, 1/4in. BSF	1	S11	C	CF1/67 CF2/27
EB8.45.1477	Bolt, 1/4in. BSF	1	S96	C	CF1/68
EEAS14	Bush	1	S11	C	CF2/28
EB8.45.1475	Bush (make from EEAS14)	2	S11	LM	CF1/69 CF2/29
EEAS63/E	Nut, slotted, 1/4in. BSF	2	S96	C	CF1/70 CF2/30
EEAS127	Piece, distance	1	S96	C	CF1/71 CF2/31
SP90/C8	Pin, split 1/16in. dia	2	-	C	CF1/72 CF2/32
EA3.45.363	TUBE, control idler lever to stbd idler post lever (Pre Mod 4930)	1	-	L	CF1/73
EA3.45.675	TUBE, control, port idler lever to stbd. idler lever (Mod 4930 Pre Mod 5473)	1	-	L	CF1/74

R

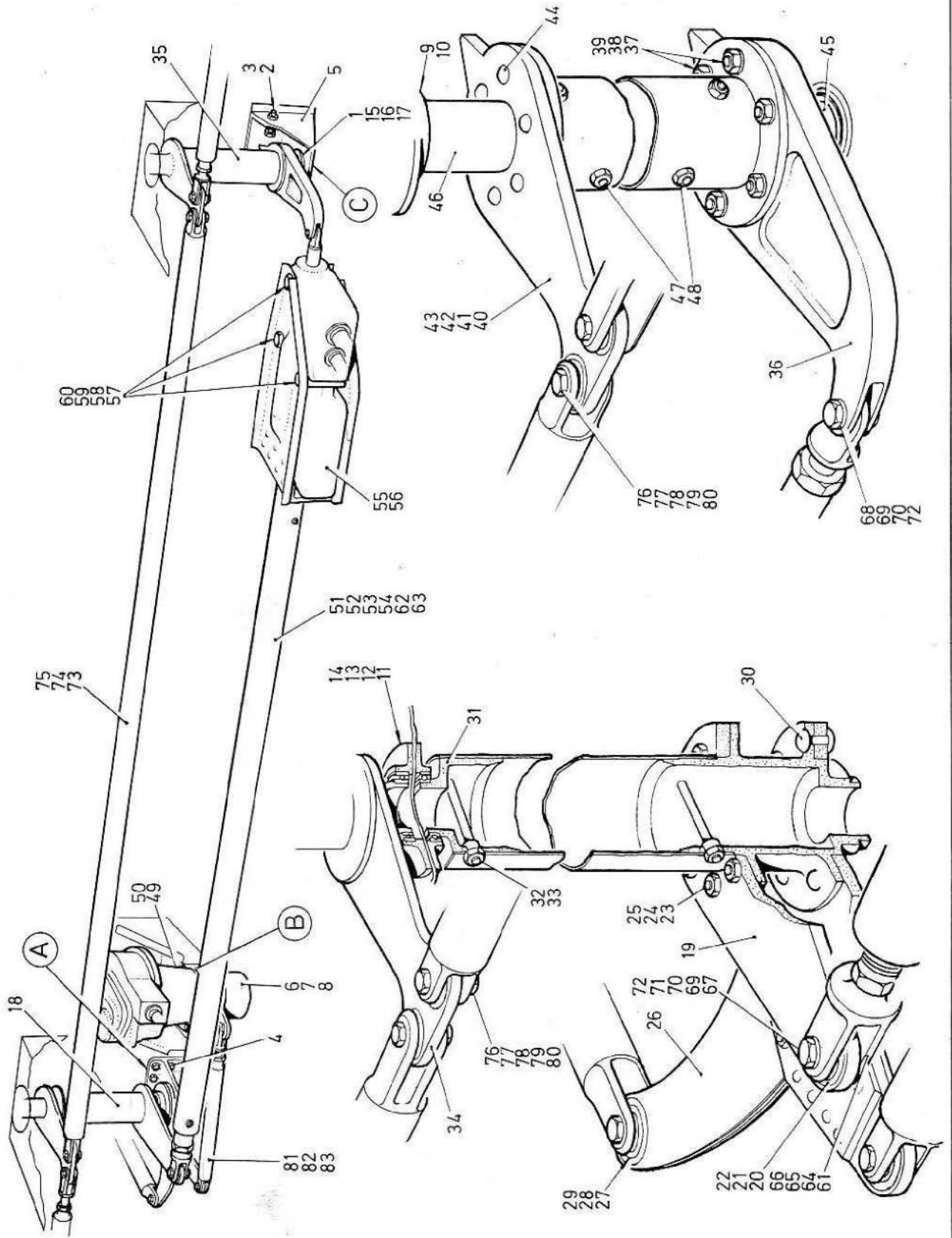
R

CONTROLS
FLYING CONTROLS CENTRE FUSELAGE

Part No.	Description 1 2 3 4 5 6	No. off	Material Specification	Class of Eqpt. M.R. or L.M.	Plate	
EA3.45.745	TUBE, control, port idler lever to stbd. idler lever (Mod 5473) Attachment of tube to levers	1	-	L	CF1/75	R
EEAS13/1	Bolt, 1/4in. BSF	2	S11	C	CF1/76	
EEAS14	Bush	2	S11	C	CF1/77	
EEAS63/E	Nut, slotted 1/4in. BSF	2	S96	C	CF1/78	
EEAS127	Piece, distance	2	S96	C	CF1/79	
SP90/C8	Pin, split 1/16in. dia	2	-	C	CF1/80	
EB8.45.423	TUBE, Control, Aileron Servomotor, Group (Pre Mod 4930)	1	-	L	CF1/81	R
EB8.45.1795	TUBE, Control, Aileron Servomotor Group (Mod 4930 Pre Mod 5473)	1	-	-	CF2/33 CF1/82	R
EB8.45.1853	TUBE, Control, Aileron servomotor Group (Mod 5473)	1	-	-	CF2/34 CF1/83 CF2/35	R
	Spares for:					
EB8.45.439	FITTING, adjuster Attachment of adjuster fitting to tube	1	DTD683	C	CF2/36	
A27/JP	Nut, 3/8in. BSF Attachment of control tube to servomotor and aileron control lever	1	-	C	CF2/31	
EEAS13/2	Bolt, 1/4in. BSF	2	-	C	CF2/38	
A27/ES	Nut, slotted, 1/4in. BSF	2	-	C	CF2/39	
SP90/C8	Pin, split, 1/16in. dia	2	-	C	CF2/40	
EA2.45.525	TUBE, Control, Aileron, Frames 14-19, Group (Pre Mod 4930)	1	-	L	CF2/41	R
EA2.45.863	TUBE, Control, Aileron, Frames 14-19, Group (Mod 4930 Pre Mod 5473)	1	-	L	CF2/42	R
EA2.45.889	TUBE, Control, Aileron Frame 14-19, Group (Mod 5473)	1	-	L	CF2/43	R
EA2.45.509	TUBE, Control, Aileron, Frames 19-21A, Group (Pre Mod 4930)	1	-	L	CF2/44	R
EA2.45.855	TUBE, Control, Aileron, Frames 19-21A, Group (Mod 4930 Pre Mod 5473)	1	-	L	CF2/45	R
EA2.45.881	TUBE, Control, Aileron, Frames 19-21A, Group (Mod 5473)	1	-	L	CF2/46	R
	Spares for:					
EEAS47/2	FITTING, adjuster Attachment of adjuster fitting to tube	2	-	C	CF2/47	R
A29/NP	Nut, 1/2in. BSF	2	-	C	CF2/48	R
EA3.45.359	TUBE, Control, Elevator and Rudder, Frames 14-18, Group (Pre Mod 4930)	2	-	L	CF2/49	R

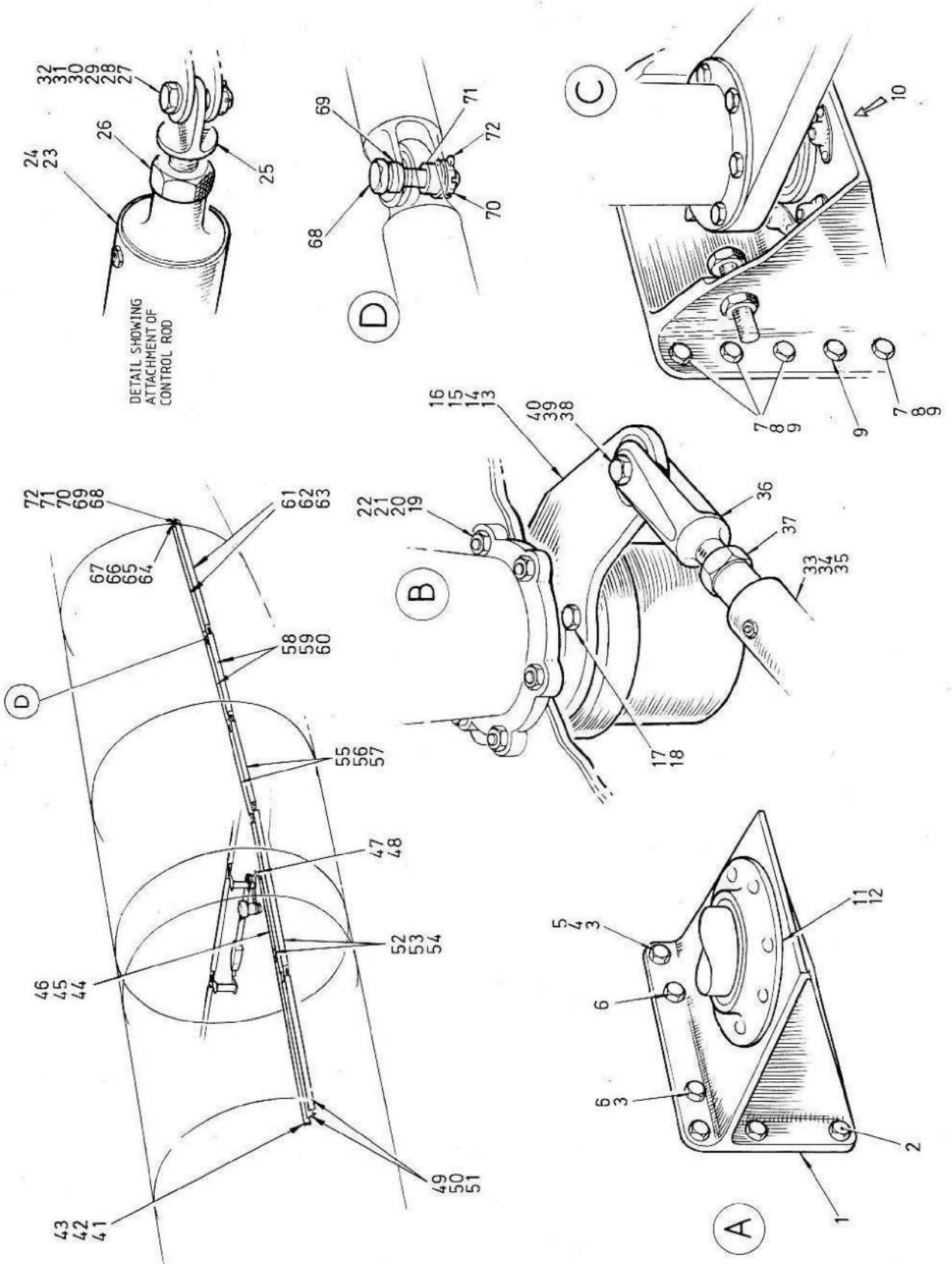
CONTROLS
FLYING CONTROLS CENTRE FUSELAGE

Part No.	Description	No. off	Material Specification	Class of Eqpt. M.R. or L.M.	Plate						
						1	2	3	4	5	6
EA3.45.673	TUBE, Control, Elevator and Rudder, Frames 14-18, Group (Mod 4930 Pre Mod 5473)	2	-	L	CF2/50						R
EA3.45.743	TUBE, Control, Elevator and Rudder, Frames 14-18, Group (Mod 5473)	2	-	L	CF2/51						R
EA2.45.517	TUBE, Control, Elevator and Rudder, Frames 18-22, Group (Pre Mod 4930)	2	-	L	CF2/52						R
EA2.45.859	TUBE, Control, Elevator and Rudder, Frames 18-22, Group (Mod 4930 Pre Mod 5473)	2	-	L	CF2/53						R
EA2.45.885	TUBE, Control, Elevator and Rudder, Frames 18-22, Group (Mod 5473)	2	-	L	CF2/54						R
EA2.45.513	TUBE, Control, Elevator and Rudder, Frames 22-25, Group (Pre Mod 4930)	2	-	L	CF2/55						R
EA2.45.857	TUBE, Control, Elevator and Rudder, Frames 22-25, Group (Mod 4930 Pre Mod 5473)	2	-	L	CF2/56						R
EA2.45.883	TUBE, Control, Elevator and Rudder, Frames 22-25, Group (Mod 5473)	2	-	L	CF2/57						R
EA2.45.505	TUBE, Control, Elevator and Rudder, Frames 25-27, Group (Pre Mod 4930)	2	-	L	CF2/58						R
EA2.45.853	TUBE, Control, Elevator and Rudder, Frames 25-27, Group (Mod 4930 Pre Mod 5473)	2	-	L	CF2/59						R
EA2.45.879	TUBE, Control, Elevator and Rudder, Frames 25-27, Group (Mod 5473)	2	-	L	CF2/60						R
EA2.45.521	TUBE, Control, Elevator and Rudder, Frames 27-31, Group (Pre Mod 4930)	2	-	L	CF2/61						R
EA2.45.861	TUBE, Control, Elevator and Rudder, Frames 27-31, Group (Mod 4930 Pre Mod 5473)	2	-	L	CF2/62						R
EA2.45.887	TUBE, Control, Elevator and Rudder, Frames 27-31, Group (Mod 5473)	2	-	L	CF2/63						R
	Spares for:										
EEAS130	FITTING, end c/w ball bearing Attachment of end fitting to tube	10	-	C	CF2/64						R
EEAS37/13A	Nipple 3/16in. dia.	60	S11	C	CF2/65						R
EEAS38/1A	Spoke, 6BA. (make from Ref. 28R/6123)	30	S96	LM	CF2/66						R
	or										
AGS2046/609	Rivet, "Chobert", csk 3/16in. dia. Attachment of control tube to control tube or lever	60	-	C	CF2/67						R
EEAS13/1	Bolt, 1/4in. BSF	20	S11	C	CF2/68						R
EEAS14	Bush	20	S11	C	CF2/69						R
EEAS63/E	Nut, slotted, 1/4in. BSF	20	S96	C	CF2/70						R
EEAS127	Piece, distance	20	S96	C	CF2/71						R
SP90/C8	Pin, split, 1/16in. dia.	20	-	C	CF2/72						R



CANBERRA PR.Mk.9

CONTROLS FLYING - CENTRE FUSELAGE



This file was downloaded
from the RTFM Library.

Link: www.scottbouch.com/rtfm

Please see site for usage terms,
and more aircraft documents.

