

Part No.	Description	No. off	Material Specification	Class of Eqpt M.R. or L.M.	Plate						
						1	2	3	4	5	6
-	FLYING CONTROLS IN REAR FUSELAGE (EB8.45.19)	-	-	-	-						
-	Spares for:										
-	FEEL UNIT Installation (EB8.45.1041)	-	-	-	-						
-	Spares for:										
English Electric AE4012	ACTUATOR, Mk 4 rudder trim	1	-	P	CG1/1						
	Attachment of actuator to lever										
EB8.45.451	Bolt, 1/4in. BSF	2	-	C	CG1/2						
A27/ES	Nut, 1/4in. BSF	2	-	C	CG1/3						
SP90/C8	Pin, split 1/16in. dia.	2	-	C	CG1/4						
Skefco											
TTS10.5	BEARING, ball	1	-	L	CG1/5						
EB8.45.1069	LEVER, Group	1	-	L	CG1/6	R					
	Spares for:										
Skefco											
CBA2	BEARING, ball	1	-	L	CG1/7	R					
Skefco											
TTS10.5	BEARING, ball	1	-	L	CG1/8	R					
EEAS3/D	HOUSING, bearing	4	-	C	CG1/9						
SP21	NIPPLE, lubricating	1	-	C	CG1/10	R					
EEAS4/20C	WASHER, packing	8	DTD390	C	CG1/11						
	Attachment of lever to structure										
EB8.45.1113	Bolt, 1/4in. BSF	1	S95	C	CG1/12						
A27/ES	Nut, 1/4in. BSF	1	-	C	CG1/13						
SP90/C8	Pin, split 1/16in. dia.	1	-	C	CG1/14						
SP13/E	Washer, 1/4in.	1	-	C	CG1/15						
EB8.45.1097	SPIGOT, bearing	2	L65	C	CG1/16						
	Attachment of spigot to structure										
AS1242/2C	Bolt, 2BA	6	-	C	CG1/17						
A27/CP	Nut, 2BA	6	-	C	CG1/18						
SP13/C	Washer, 2BA	6	-	C	CG1/19						
EB8.45.1149	GUARD, Control, Between Frames 31B-33, Assembly	-	-	-	CG1/20						
	Spares for:										
Fairey Aviation FS515	BEARING, roller	2	-	L	CG1/21	R					
EB8.45.1151	GUARD, control	1	-	C	CG1/22						

CONTROLS  
FLYING CONTROLS - REAR FUSELAGE

Part No.	Description	No. off	Material Specification	Class of Eqpt M.R. or L.M.	Plate										
						1	2	3	4	5	6				
	Attachment of guard to structure														
A25/1/2B	Bolt, 4BA	14	-	C	CG1/23										
	LEVER, Operating, Upper, Frames 41-42, Assembly (EB8.45.669)	-	-	-	-										R
	Spares for:														
Skefco	BEARING, ball	2	-	L	CG1/24										R
TTS8.5	HOUSING, bearing	1	L65	C	CG1/25										
EB8.45.315	HOUSING, bearing	1	L65	C	CG1/26										
EB8.45.321	LEVER, c/w bearing	1	-	L	CG1/27										
EB8.45.303															
	Attachment of lever and housings to structure														
A25/2C	Bolt, 2BA	4	-	C	CG1/28										
A25/3C	Bolt, 2BA	4	-	C	CG1/29										
A27/CP	Nut, 2BA	8	-	C	CG1/30										
EB8.45.599	Shim, laminated	1	Lam A1	C/MR	CG1/31										
EB8.45.601	Shim, laminated	1	Lam A1	C/MR	CG1/32										
SP13/C	Washer, 2BA	4	-	C	CG1/33										
-	LEVER, Elevator, Frames 41-42, Assembly (EB8.46.315)	-	-	-	-										
	Spares for:														
EB8.45.327	LEVER, elevator c/w bearing	1	-	L	CG1/34										
	Attachment of lever to structure														
EEAS13/6	Bolt, 1/4in BSF	1	S96	C	CG1/35										
A58/ES	Nut, 1/4in. BSF	1	-	C	CG1/36										
SP90/C8	Pin. split 1/16in. dia.	1	-	C	CG1/37										
SP15/E	Washer, 1/4in	1	-	C	CG1/38										
EB8.46.305	SPINDLE	1	-	C	CG1/39										
	Attachment of spindle														
SP90/C5	Pin, split 1/16in. dia.	1	-	C	CG1/40										
EA2.45.505	TUBE, Control, Elevator and Rudder Frames 31B-34 Group (Pre Mod 4930)	2	-	L	CG1/41										
EA2.45.853	TUBE, Control, Elevator and Rudder Frames 31B-34, Group (Mod 4930 Pre Mod 5473)	2	-	L	CG1/42										
EA2.45.879	TUBE, Control, Elevator and Rudder Frames 31B-34, Group (Mod 5473)	2	-	L	CG1/43										

Part No.	Description 1 2 3 4 5 6	No. off	Material Specification	Class of Eqpt M.R. or L.M.	Plate		
	Spares for:						
EEAS130	FITTING, end c/w bearing	2	DTD683	C	CG1/44		
	Attachment of fittings to tubes						
EEAS37/13A	Nipple, 3/16in. dia.	12	S11	C	CG1/45		
AGS2046/609	Rivet, 3/16in. dia.	12	-	C	CG1/46		
EEAS38/1A	Spoke, 6BA (Make from ref 28R/6123)	6	S11	LM	CG1/47		
	Attachment between tubes						
EEAS13/1	Bolt, 1/4in.	2	S11	C	CG1/48		
EEAS14	Bush	2	S11	C	CG1/49		
EEAS63/E	Nut, 1/4in.	2	S96	C	CG1/50		
EEAS127	Piece, distance	2	S96	C	CG1/51		
SP90/C8	Pin, split 1/16 in. dia.	2	-	C	CG1/52		
EA2.45.513	TUBE, Control, Elevator and Rudder Frames 34-37, Group (Pre Mod 4930)	2	-	L	CG1/53	R	
EA2.45.857	TUBE, Control, Elevator and Rudder Frames 34-37, Group (Mod 4930 Pre Mod 5473)	2	-	L	CG1/54	R	
EA2.45.883	TUBE, Control, Elevator and Rudder Frames 34-37, Group (Mod 5473)	2	-	L	CG1/55	R	
	Spares for:						
EEAS130	FITTING, end c/w bearing	2	DTD683	C	CG1/56		
	Attachment of fittings to tubes						
EEAS37/13A	Nipple, 3/16in. dia.	12	S11	C	CG1/57		
AGS2046/609	Rivet, 3/16in. dia.	12	-	C	CG1/58		
EEAS38/1A	Spoke, 6BA (Make from ref. 28R/6123)	6	S11	LM	CG1/59		
	Attachment between tubes						
EEAS13/1	Bolt, 1/4in.	2	S11	C	CG1/60		
EEAS14	Bush	2	S11	C	CG1/61		
EEAS63/E	Nut, 1/4in.	2	S96	C	CG1/62		
EEAS127	Piece, distance	2	S96	C	CG1/63		
SP90/C8	Pin, split, 1/16in. dia	2	-	C	CG1/64		
EB8.45.1291	TUBE, Control, Rudder, Frames 37-39 Group (Pre Mod 4930)	1	-	L	CG1/65		
EB8.45.1783	TUBE, Control, Rudder, Frames 37-39 Group (Mod 4930 Pre Mod 5473)	1	-	L	CG1/66	R	
EB8.45.1841	TUBE, Control, Rudder, Frames 37-39, Group (Mod 5473)	1	-	L	CG1/67		
	Spares for:						
EEAS130	FITTING, end c/w bearing	1	DTD683	C	CG1/68		

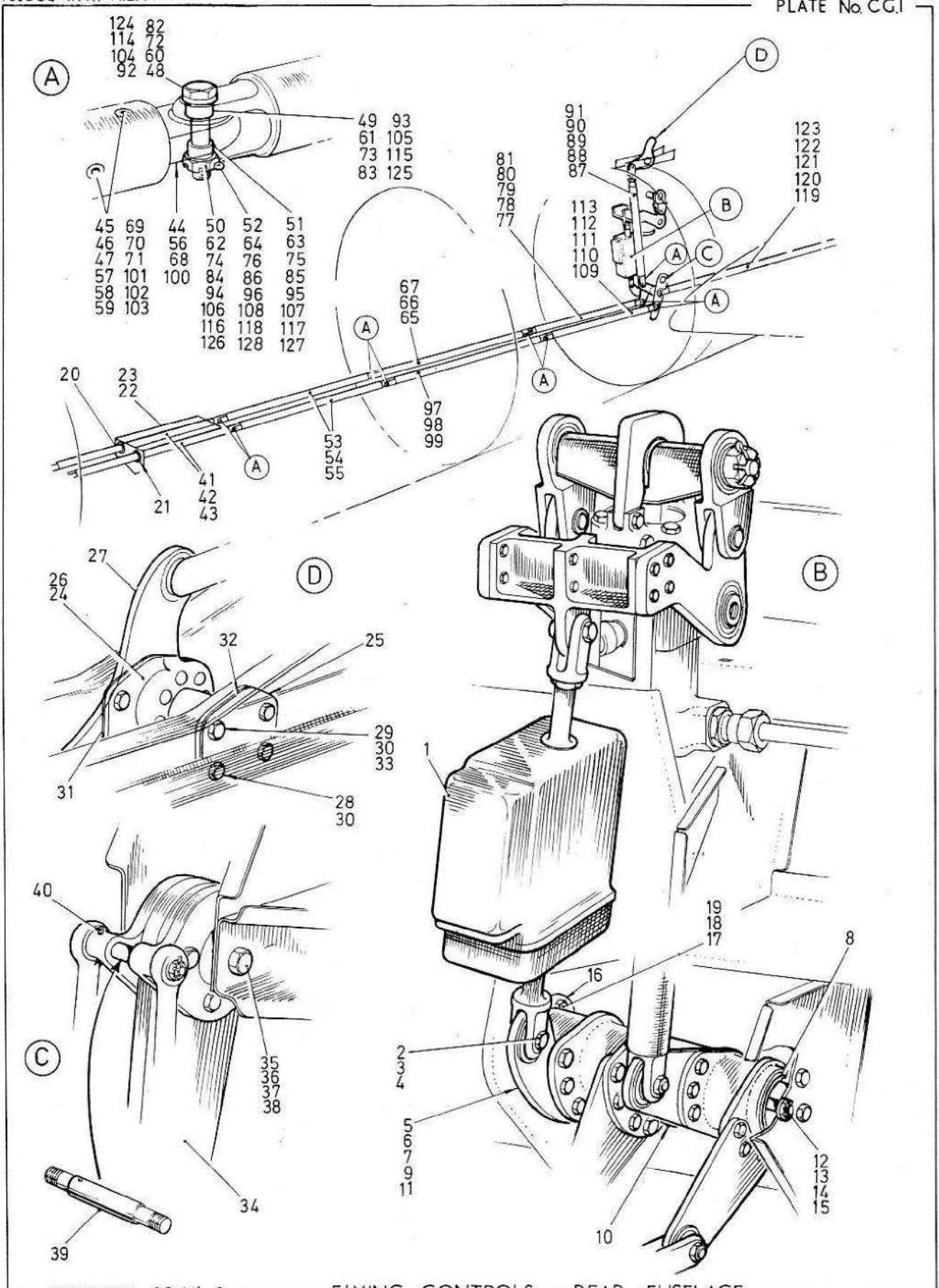
CONTROLS  
FLYING CONTROLS - REAR FUSELAGE

Part No.	Description	No. off	Material Specification	Class of Eqpt M.R. or L.M.	Plate										
						1	2	3	4	5	6				
	Attachment of fitting to tube														
EEAS37/13A	Nipple, 3/16in. dia.	6	S11	C	CG1/69										
AGS2046/609	Rivet, 3/16in. dia.	6	-	C	CG1/70										
EEAS38/1A	Spoke, 6BA (Make from ref. 28R/6123)	3	S11	LM	CG1/71										R
	Attachment between tubes														
EEAS13/1	Bolt, 1/4in.	1	S11	C	CG1/72										
EEAS14	Bush	1	S11	C	CG1/73										
EEAS63/E	Nut, 1/4in.	1	S96	C	CG1/74										
EEAS127	Piece, distance	1	S96	C	CG1/75										R
SP90/C8	Pin, split, 1/16in. dia	1	-	C	CG1/76										
EB8.45.653	TUBE, Control, Rudder, Frames 39-41, Group (Pre Mod 4930)	1	-	L	CG1/77										
EB8.45.1805	TUBE, Control, Rudder, Frames 39-41, Group (Mod 4930 Pre Mod 5473)	1	-	L	CG1/78										
EB8.45.1857	TUBE, Control, Rudder, Frames 39-41 Group (Mod 5473)	1	-	L	CG1/79										
	Spares for:														
EEAS47/2	FITTING, adjuster	1	DTD683	C	CG1/80										
	Attachment of fitting to tube														
A29/NP	Locknut, 1/2in. BSF	1	-	C	CG1/81										
	Attachment between tube and lever														
EEAS13/1	Bolt, 1/4in.	1	S11	C	CG1/82										
EEAS14	Bush	1	S11	C	CG1/83										
EEAS63/E	Nut, 1/4in.	1	S96	C	CG1/84										
EEAS127	Piece, distance	1	S96	C	CG1/85										
SP90/C8	Pin, split, 1/16in. dia.	1	-	C	CG1/86										
EB8.45.293	TUBE, Control, Rudder, Aft, Frame 41, Group (Pre Mod 4930)	1	-	L	CG1/87										
EB8.45.1803	TUBE, Control, Rudder, Aft, Frame 41, Group (Mod 4930 Pre Mod 5473)	1	-	L	CG1/88										R
EB8.45.1855	TUBE, Control, Rudder, Aft, Frame 41, Group (Mod 5473)	1	-	L	CG1/89										
	Spares for:														
EEAS128	FITTING, end	1	DTD683	C	CG1/90										
	Attachment of fitting to tube														
A29/NP	Locknut, 1/2in. BSF	1	-	C	CG1/91										

Part No.	Description	No. off	Material Specification	Class of Eqpt M.R. or L.M.	Plate
	Attachment of tube between levers				
EEAS13/1	Bolt, 1/4in.	2	S11	C	CG1/92
EEAS14	Bush	2	S11	C	CG1/93
EEAS63/E	Nut, 1/4in.	2	S96	C	CG1/94
EEAS127	Piece, distance	2	S96	C	CG1/95
SP90/C8	Pin, split, 1/16in. dia.	2	-	C	CG1/96
EA2.45.533	TUBE, Control, Elevator Frames 37-39, Group (Pre Mod 4930)	1	-	L	CG1/97
EA2.45.865	TUBE, Control, Elevator Frames 37-39, Group (Mod 4930 Pre Mod 5473)	1	-	L	CG1/98 R
EA2.45.891	TUBE, Control, Elevator Frames 37-39, Group (Mod 5473)	1	-	L	CG1/99
	Spares for:				
EEAS130	FITTING, end, c/w bearing	1	DTD683	C	CG1/100
	Attachment of fitting to tube				
EEAS37/13A	Nipple, 3/16in. dia	6	S11	C	CG1/101
AGS2046/609	Rivet, 3/16in. dia.	6	-	C	CG1/102
EEAS38/1A	Spoke, 6BA (Make from ref. 28R/6123)	3	S11	LM	CG1/103
	Attachment between tubes				
EEAS13/1	Bolt, 1/4in.	1	S11	C	CG1/104
EEAS14	Bush	1	S11	C	CG1/105
EEAS63/E	Nut, 1/4in.	1	S96	C	CG1/106
EEAS127	Piece, distance	1	S96	C	CG1/107
SP90/C8	Pin, split 1/16in. dia.	1	-	C	CG1/108
EB8.45.1281	TUBE, Control Elevator, Frames 40-41, Group (Pre Mod 4930)	1	-	L	CG1/109
EB8.45.1785	TUBE, Control, Elevator, Frames 40-41, Group (Mod 4930 Pre Mod 5473)	1	-	L	CG1/110 R
EB8.45.1843	TUBE, Control, Elevator, Frames 40-41, Group (Mod 5473)	1	-	L	CG1/111
	Spares for:				
EEAS47/2	FITTING, adjuster	1	DTD683	C	CG1/112
	Attachment of fitting to tube				
A29/NP	Locknut, 1/2in. BSF	1	-	C	CG1/113
	Attachment between tube and lever				
EEAS13/1	Bolt, 1/4in.	1	S11	C	CG1/114
EEAS14	Bush	1	S11	C	CG1/115
EEAS63/E	Nut, 1/4in.	1	S96	C	CG1/116
EEAS127	Piece, distance	1	S96	C	CG1/117
SP90/C8	Pin, split 1/16in. dia.	1	-	C	CG1/118
EA3.45.317	TUBE, Control, Elevator, Frames 42-47, Group (Pre Mod 4930)	1	-	L	CG1/119

CONTROLS  
FLYING CONTROLS - REAR FUSELAGE

Part No.	Description	No. off	Material Specification	Class of Eqpt M.R. or L.M.	Plate						
						1	2	3	4	5	6
EA3.45.653	TUBE, Control, Elevator, Frames 42-47, Group (Mod 4930 Pre Mod 5473)	1	-	L	CG1/120						
EA3.45.729	TUBE, Control, Elevator, Frames 42-47, Group (Mod 5473)	1	-	L	CG1/121						
	Spares for:										
EEAS47/2	FITTING, adjuster Attachment of fitting to tube	1	DTD683	C	CG1/122						
A29/NP	Locknut, 1/2in. BSF Attachment between tube and lever	1	-	C	CG1/123						
EEAS13/1	Bolt, 1/4in.	1	S11	C	CG1/124						
EEAS14	Bush	1	S11	C	CG1/125						
EEAS63/E	Nut, 1/4in.	1	S96	C	CG1/126						
EEAS127	Piece, distance	1	S96	C	CG1/127						
SP90/C8	Pin, split 1/16in. dia.	1	-	C	CG1/128						



This file was downloaded  
from the RTFM Library.

Link: [www.scottbouch.com/rtfm](http://www.scottbouch.com/rtfm)

Please see site for usage terms,  
and more aircraft documents.

