

CONTROLS
FLYING CONTROLS IN WING

Part No.	Description 1 2 3 4 5 6	No. off	Material Specification	Class of Eqpt M.R. or L.M.	Plate	
	AILERON CONTROLS, PORT (EB8.45.11)	-	-	-	-	
	AILERON CONTROLS, STARBOARD (EB8.45.12)	-	-	-	-	
	Spares for:					
EB8.45.683	LINK, Bellcrank Complete, Port and Stbd (Pre Mod 4814)	2	-	L	CH1/1	
EB8.45.1757	LINK, Bellcrank, Assembly (Mod 4814 Pre Mod 5000 ALT SB/9/077)	2	-	C	-	R
EB8.45.1947	LINK, Bellcrank, Assembly (Mod 5000 ALT SB/9/077)	2	-	C	CH1/2	R
	Spares for:					
EB8.45.1765	YOKE, Group (Pre Mod 5000 ALT SB/9/077)	2	S96	-	-	R
EB8.45.1949	YOKE, Group (Mod 5000 ALT SB/9/077)	2	-	-	-	R
	Spares for:					
Skefco CBA2	BEARING, ball	2	-	C	-	R
EEAS3/D	HOUSING, bearing (Mod 5000 ALT SB/9/077)	2	-	-	-	R
EB8.45.1761	YOKE (Pre Mod 5000 ALT SB/9/077)	2	-	-	-	R
EB8.45.1951	YOKE, (Mod 5000 ALT SB/9/077)	2	-	-	-	R
	Attachment of link to levers					
EB8.45.1821	Bolt 1/4in. BSF	4	S97	C	CH1/3	
EEAS63/E	Nut, slotted 1/4in. BSF	4	S96	C	CH1/4	R
SP90/C8	Pin, split 1/16in. dia.	4	-	C	CH1/5	
SP15/E	Washer	4	-	C	CH1/6	
EB8.45.685	LINK, input between ribs 6A-6B port and stbd (Pre Mod 4813)	4	-	C	CH1/7	
EB8.45.1755	LINK, input assembly, between ribs 6A-6B port and stbd (Mod 4813)	4	-	C	CH1/8	
	Attachment of link to levers					
EB8.45.1821	Bolt, 1/4in. BSF	4	S97	C	CH1/9	
EEAS63/E	Nut, slotted 1/4in. BSF	4	S96	C	CH1/10	R
SP90/C8	Pin, split 1/16in. dia.	4	-	C	CH1/11	
SP15/E	Washer	4	-	C	CH1/12	
	Attachment of links to valve lever					
EB8.45.693	Bolt 5/16in. BSF	4	S97	C	CH1/13	
EB8.45.687	Bush	4	S96	C	CH1/14	
EEAS63/G	Nut, slotted 5/16in. BSF	4	S96	C	CH1/15	R
EB8.45.689	Piece distance	4	S96	C	CH1/16	
SP90/C8	Pin split 1/16 in. dia.	4	-	C	CH1/17	
EB8.45.1409	TUBE, Control Bulkhead Lever to Lever Inner Wing Rib Port and Stbd Group (Pre Mod 4815)	2	-	L	CH1/18	
	Spares for:					
EB8.45.1407	FORK-END adjustable	2	DTD5054	C	CH1/19	
	Attachment of adjuster fitting to tube					
A29/NP	Nut, 1/4in BSF	2	-	C	CH1/20	
EB8.45.1759	TUBE Control Bulkhead Lever to Lever Inner Wing Rib 4 Port and Stbd Group (Mod 4815 Pre Mod 4930)	2	-	C	CH1/21	R

CONTROLS
FLYING CONTROLS IN WING

Part No.	Description	No. off	Material Specification	Class of Eqpt M.R. or L.M.	Plate														
						1	2	3	4	5	6								
	Spares for:																		
EB8.45.1767	FORK-END adjustable	2	-	L	CH1/22														
	Attachment of adjuster fitting to tube																		
A27/NP EB8.45.1819	Nut, 1/2in. BSF	2	-	C	CH1/23														R
	TUBE, Control, Bulkhead Lever to Lever Inner Wing Rib 4 Port and Stbd Group (Mod 4930 Pre Mod 5473)	2	-	-	CH1/24														R
EB8.45.1867	TUBE, Control, Bulkhead Lever to Lever Inner Wing Rib 4 Port and Stbd group (Mod 5473)	2	-	-	CH1/25														R
	Spares for:																		
EB8.45.1767	FORK-END adjustable	2	-	C	CH1/26														
	Attachment of adjuster fitting to tube																		
A27/NP EB8.20.5533	Nut, 1/2in. BSF	2	-	C	CH1/27														R
	TUBE, Control, lever inner wing rib 4 to centre lever at nacelle Port and Stbd (Pre Mod 4930)	2	-	C	CH1/28														R
EB8.20.6041	TUBE, Control, lever inner wing rib 4 to centre lever at nacelle Port and Stbd (Mod 4930 Pre Mod 5473)	2	-	C	CH1/29														R
EB8.20.1881	TUBE, Control, lever inner wing rib 4 to centre lever at nacelle Port and Stbd (Mod 5473)	2	-	C	CH1/30														R
EB8.20.5531	TUBE, Control, centre lever at nacelle to lever outer wing rib 2 Port and Stbd (Pre Mod 4930)	2	-	C	CH1/31														R
EB8.20.6039	TUBE, Control, centre lever at nacelle to lever outer wing rib 2 Port and Stbd (Mod 4930 Pre Mod 5473)	2	-	C	CH1/32														R
EB8.20.1879	TUBE, Control, centre lever at nacelle to lever outer wing rib 2 Port and Stbd (Mod 5473)	2	-	C	CH1/33														R
EB8.45.679	TUBE, Control, lever outer wing rib 2 to lever rib 4, Port and Stbd (Pre Mod 4930)	2	-	C	CH1/34														R
EB8.45.1813	TUBE, Control, lever outer wing rib 2, to lever rib 4 Port and Stbd (Mod 4930 Pre Mod 5473)	2	-	C	CH1/35														R
EB8.45.1863	TUBE, Control, lever outer wing rib 2 to lever rib 4 Port and Stbd (Mod 5473)	2	-	C	CH1/36														R
EB8.45.681	TUBE, Control, outer wing rib 4, to link at jack wall rib 6, Port and Stbd group (Pre Mod 4930)	2	-	C	CH1/37														R
EB8.45.1815	TUBE, Control, outer wing rib 4, to link at jack wall rib 6, Port and Stbd (Mod 4930 Pre Mod 5473)	2	-	C	CH1/38														R

CONTROLS
FLYING CONTROLS IN WING

Part No.	Description	No. off	Material Specification	Class of Eqpt M.R. or L.M.	Plate
EB8.45.1865	TUBE, Control outer wing rib 4 to link at jack wall rib 6, port and stbd (Mod 5473)	2	-	C	CH1/39
	Spares for:				
EEAS47/2	FORK-END, adjustable	8	DTD683	C	CH1/40
	Attachment of fork-end to tube				
A29/NP	Nut 1/4in. BSF	8	-	C	CH1/41
	Attachment of control tube to levers				
EEAS13/1	Bolt, 1/4in. BSF	16	S11	C	CH1/42
EEAS14	Bush	16	S11	C	CH1/43
EEAS63/E	Nut, slotted 1/4in. BSF	16	S96	C	CH1/44
EEAS127	Piece, distance	16	S96	C	CH1/45
SP90/C8	Pin, split 1/16in. dia	16	-	C	CH1/46
	FLAP OPERATING MECHANISM, INBOARD PORT (EB8.20.27)	-	-	-	-
	Spares for:				
EAl.20.711	BRACKET, jack support	1	L40	C	CH2/1
EAl.20.885	BRACKET, jack support (Pre Mod 4781)	2	DTD638	C	CH2/2
EA3.20.3991	BRACKET, jack support (Mod 4781)	2	S97	C	CH2/3
	Attachment of brackets to structure				
A25/8G	Bolt, 5/16in. BSF	4	-	C	-
A25/10G	Bolt, 5/16in. BSF	4	-	C	-
A25/13J	Bolt, 3/8in. BSF	4	-	C	-
A27/JS	Nut, 3/8in. BSF	4	-	C	-
SP90/C8	Pin, split	4	-	C	-
SP15/G	Washer, 5/16in.	4	-	C	-
SP16/J	Washer, 3/8in.	6	-	C	-
EB8.20.4213	LEVER, control rod to transmitter	1	-	C	CH2/4
	Attachment of lever to clamp ring				
AGS899/4	Collar	1	-	C	-
EB8.20.4219	Pin	1	S95	C	CH2/5
SP90/C6	Pin, split	1	-	C	-
EA3.20.1011	LINK, Connecting, Rib 6 Group	2	-	L	CH2/6
	Spares for:				
EAl.20.797	PLATE, locking	2	DTD610	C	CH2/7
EAl.20.795	SCREW, adjusting	2	S11	C	CH2/8
EAl.20.791	WASHER	2	L40	C	CH2/9
SP21	NIPPLE, grease, push rod attachments	2	-	C	-
EB8.20.5983	PLATE, sealing	1	L73	C	-
EB8.20.5984	PLATE, sealing	1	L73	C	-
EB8.20.5985	PLATE, sealing	1	L73	C	-
EB8.20.5986	PLATE, sealing	1	L73	C	-
EB8.20.4217	RING, clamping	1	LFS 21	C	-

CONTROLS
FLYING CONTROLS IN WING

Part No.	Description	No. off	Material Specification	Class of Eqpt M.R. or L.M.	Plate
EA1.20.815	ROD, Push, Inboard Group	1	-	L	CH2/10
EA1.20.819	ROD, Push, Outboard Group	1	-	L	CH2/11
	Spares for:				
EA1.20.839	BUSH, for rod end	2	DTD197	C	CH2/12
EA1.20.827	END, rod	2	L40	C	CH2/13
EA1.20.825	FITTING, end	2	L40	C	CH2/14
	Attachment of rod end and fitting to tube				
EEAS37/15A	Nipple	24	S11	C	-
EEAS38/2A	Spoke (Make from Ref: 28R/6124)	12	-	LM	-
SP21	NIPPLE, lubricating, pivot pin	1	-	C	-
EA1.20.805	PIN, pivot	1	S11	C	CH2/15
EA1.20.807	PLATE, locking	1	DTD610	C	CH2/16
EEAS5	WASHER, grease, nipple	1	Fibre	C	-
	Attachment of rod to jack				
EA1.20.803	Pin	2	S11	C	CH2/17
SP90/G8	Pin, split	2	-	C	-
EEAS5	Washer	2	Fibre	C	-
Weston S132/1/11	TRANSMITTER, position indicator	1	-	P	CH2/18
	Attachment of transmitter to bracket				
A25/7C	Bolt, 2BA	2	-	C	-
AGS2001/C1	Nut, 2BA	2	-	C	-
SP15/C	Washer	2	-	C	-
-	FLAP OPERATING MECHANISM INBOARD, STARBOARD (EB8.20.28)	-	-	-	-
	Spares for:				
EA1.20.711	BRACKET, jack support	1	L40	C	CH2/19
EA1.20.887	BRACKET, jack support (Pre Mod 4781)	2	DTD683	C	CH2/20
EA3.20.4009	BRACKET, jack support (Mod 4781)	2	S97	C	CH2/21
	Attachment of brackets to structure				
A25/8G	Bolt, 5/16in. BSF	4	-	C	-
A25/10G	Bolt, 5/16in. BSF	4	-	C	-
A25/13J	Bolt, 3/8in. BSF	4	-	C	-
A27/JS	Nut, 3/8in. BSF	4	-	C	-
SP90/C8	Pin, split	4	-	C	-
SP15/G	Washer, 5/16in.	4	-	C	-
SP16/J	Washer, 3/8in.	6	-	C	-
EA3.20.1011	LINK, Connecting, Rib 6 Group	2	-	L	CH2/22
	Spares for:				
EA1.20.797	PLATE, locking	2	DTD610	C	CH2/23
EA1.20.795	SCREW, adjusting	2	S11	C	CH2/24
EA1.20.791	WASHER	2	L40	C	CH2/25
SP21	NIPPLE, grease, push rod attachment	2	-	C	-

R

R

CONTROLS
FLYING CONTROLS IN WING

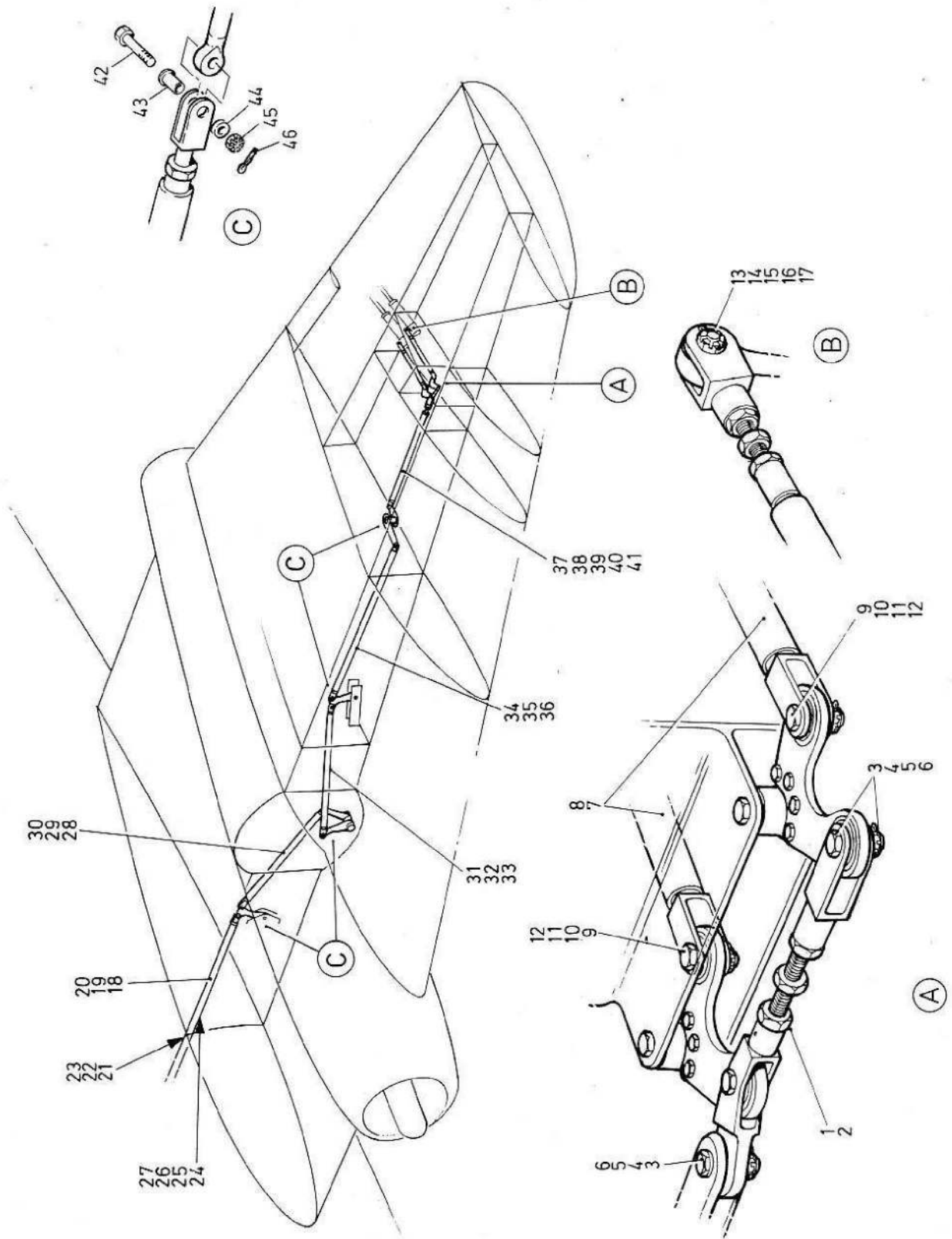
Part No.	Description	No. off	Material Specification	Class of Eqpt M.R. or L.M.	Plate
EA1.20.869	ROD, Push. Inboard Group	1	-	L	CH2/26
EA1.20.889	ROD, Push. Outboard Group	1	-	L	CH2/27
	Spares for:				
EA1.20.839	BUSH, for rod end	2	DTD197	C	CH2/28
EA1.20.827	END, rod	2	L40	C	CH2/29
EA1.20.825	FITTING, end	2	L40	C	CH2/30
	Attachment of rod end and fitting to tube				
EEAS37/15A	Nipple	24	S11	C	-
EEAS38/2A	Spoke (Make from Ref: 28R/6124)	12	-	LM	-
SP21	NIPPLE, lubricating pivot pin	2	-	C	-
EA1.20.805	PIN, pivot	2	S11	C	CH2/31
EA1.20.807	PLATE, locking	2	DTD610	C	CH2/32
EEAS5	WASHER, grease nipple	2	Fibre	C	-
	Attachment of rods to jack				
EA1.20.803	Pin	2	S11	C	CH2/33
SP90/G8	Pin, split	2	-	C	-
EEAS5	Washer, grease nipple	2	Fibre	C	-
-	FLAP OPERATING MECHANISM OUTBOARD PORT (EB8.20.39)	-	-	-	-
	Spares for:				
EA1.20.711	BRACKET, jack support	1	L40	C	CH2/34
EA1.20.885	BRACKET, jack support (Pre Mod 4781)	2	DTD683	C	CH2/35
EA3.20.3991	BRACKET, jack support (Mod 4781)	2	S97	C	CH2/35a
	Attachment of brackets to structure				
A25/8G	Bolt, 5/16in. BSF	4	-	C	-
A25/10G	Bolt, 5/16in. BSF	4	-	C	-
A25/13J	Bolt, 3/8in. BSF	4	-	C	-
A27/JS	Nut, 3/8in. BSF	4	-	C	-
SP90/C8	Pin, split, 1/16in. dia.	4	-	C	-
SP15/G	Washer, 5/16in.	4	-	C	-
SP16/J	Washer, 3/8in.	4	-	C	-
EA3.20.1011	LINK Connecting, Rib 6 Group	2	-	L	CH2/36
	Spares for:				
EA1.20.797	PLATE, locking	2	DTD610	C	CH2/37
EA1.20.795	SCREW, adjusting	2	S11	C	CH2/38
EA1.20.791	WASHER	2	L40	C	CH2/39
SP21	NIPPLE, grease, push rod attachment	2	-	C	-
EA1.20.815	ROD, Push, Inboard Group	1	-	L	CH2/40
EA1.20.813	ROD, Push, Outboard Group	1	-	L	CH2/41
	Spares for:				
EA1.20.839	BUSH, for rod end	2	DTD197	C	CH2/42
EA1.20.827	END, rod	2	L40	C	CH2/43
EA1.20.825	FITTING, end	2	L40	C	CH2/44

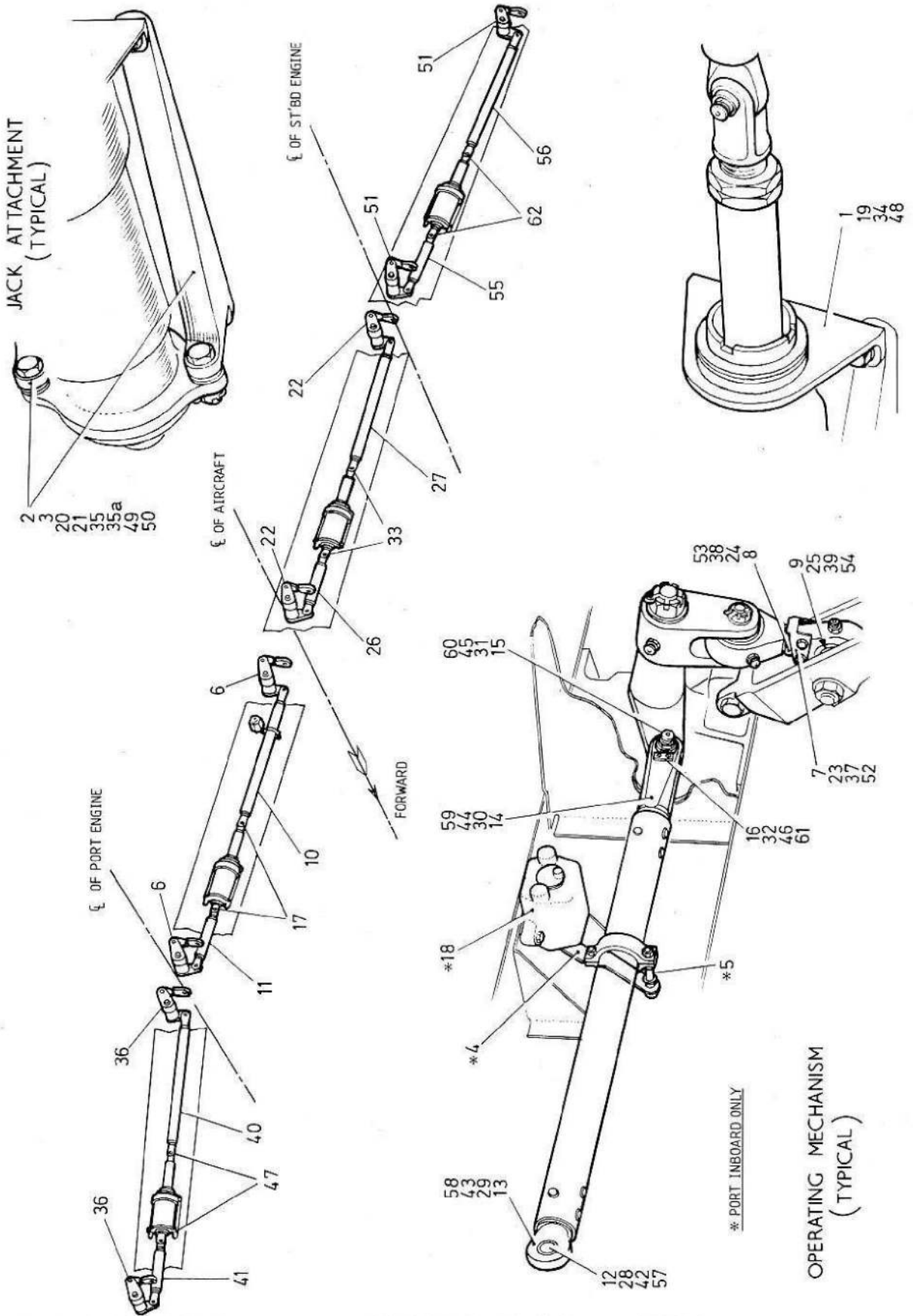
CONTROLS
FLYING CONTROLS IN WING

Part No.	Description	No. off	Material Specification	Class of Eqpt M.R. or L.M.	Plate
	Attachment of rod end and fitting to tube				
EEAS37/15A	Nipple	24	S11	C	-
EEAS38/2A	Spoke (Make from Ref. 28R/6124)	12	-	LM	-
SP21	NIPPLE, grease, pivot pin	2	-	C	-
EA1.20.805	PIN, pivot	2	S11	C	CH2/45
EA1.20.807	PLATE, locking	2	DTD610	C	CH2/46
EEAS5	WASHER, grease nipple	2	Fibre	C	-
	Attachment of rods to jack				
EA1.20.803	Pin	2	S11	C	CH2/47
SP90/G8	Pin, split 1/8in. dia.	2	-	C	-
EEAS5	Washer, grease nipple	2	Fibre	C	-
-	FLAP OPERATING MECHANISM OUTBOARD STARBOARD (EB8.20.40)	-	-	-	-
	Spares for:				
EA1.20.711	BRACKET, jack support	1	L40	C	CH2/48
EA1.20.995	BRACKET, jack support (Pre Mod 4781)	2	DTD683	C	CH2/49
EA3.20.3991	BRACKET, jack support (Mod 4781)	2	S97	C	CH2/50
	Attachment of brackets to structure				
A25/8G	Bolt, 5/16in. BSF	6	-	C	-
A25/10G	Bolt, 5/16in. BSF	6	-	C	-
A25/13J	Bolt, 3/8in. BSF	6	-	C	-
A27/JS	Nut, 3/8in. BSF	6	-	C	-
SP90/C8	Pin, split, 1/16in. dia.	6	-	C	-
SP15/G	Washer 5/16in.	6	-	C	-
SP16/J	Washer, 3/8in.	6	-	C	-
EA3.20.1011	LINK, Connecting, Rib 6 Group	2	-	L	CH2/51
	Spares for:				
EA1.20.797	PLATE, locking	2	DTD610	C	CH2/52
EA1.20.795	SCREW, adjusting	2	S11	C	CH2/53
EA1.20.791	WASHER	2	L40	C	CH2/54
SP21	NIPPLE, grease, push rod attachment	2	-	C	-
EA1.20.891	ROD, Push, Inboard Group	1	-	C	CH2/55
EA1.20.817	ROD, Push Outboard Group	1	-	C	CH2/56
	Spares for:				
EA1.20.839	BUSH, for rod end	2	DTD197	C	CH2/57
EA1.20.827	END, rod	2	L40	C	CH2/58
EA1.20.825	FITTING, end	2	L40	C	CH2/59
	Attachment of rod end and fitting to tube				
EEAS37/15A	Nipple	24	S11	C	-
EEAS38/2A	Spoke (Make from Ref. 28R/6124)	12	-	LM	-
SP21	NIPPLE, lubricating, pivot pin	2	-	C	-
EA1.20.805	PIN, pivot	2	S11	C	CH2/60
EA1.20.807	PLATE, locking	2	DTD610	C	CH2/61

CONTROLS
FLYING CONTROLS IN WING

Part No.	Description 1 2 3 4 5 6	No. off	Material Specification	Class of Eqpt. M.R. or L.M.	Plate	
EEAS5	WASHER, grease nipple	2	Fibre	C	-	R
	Attachment of rods to jack					
EA1.20.803	Pin	2	S11	C	CH2/62	R
SP90/G8	Pin, split 1/8in. dia.	2	-	C	-	R
EEAS5	Washer, grease nipple	2	Fibre	C	-	R





This file was downloaded
from the RTFM Library.

Link: www.scottbouch.com/rtfm

Please see site for usage terms,
and more aircraft documents.

