

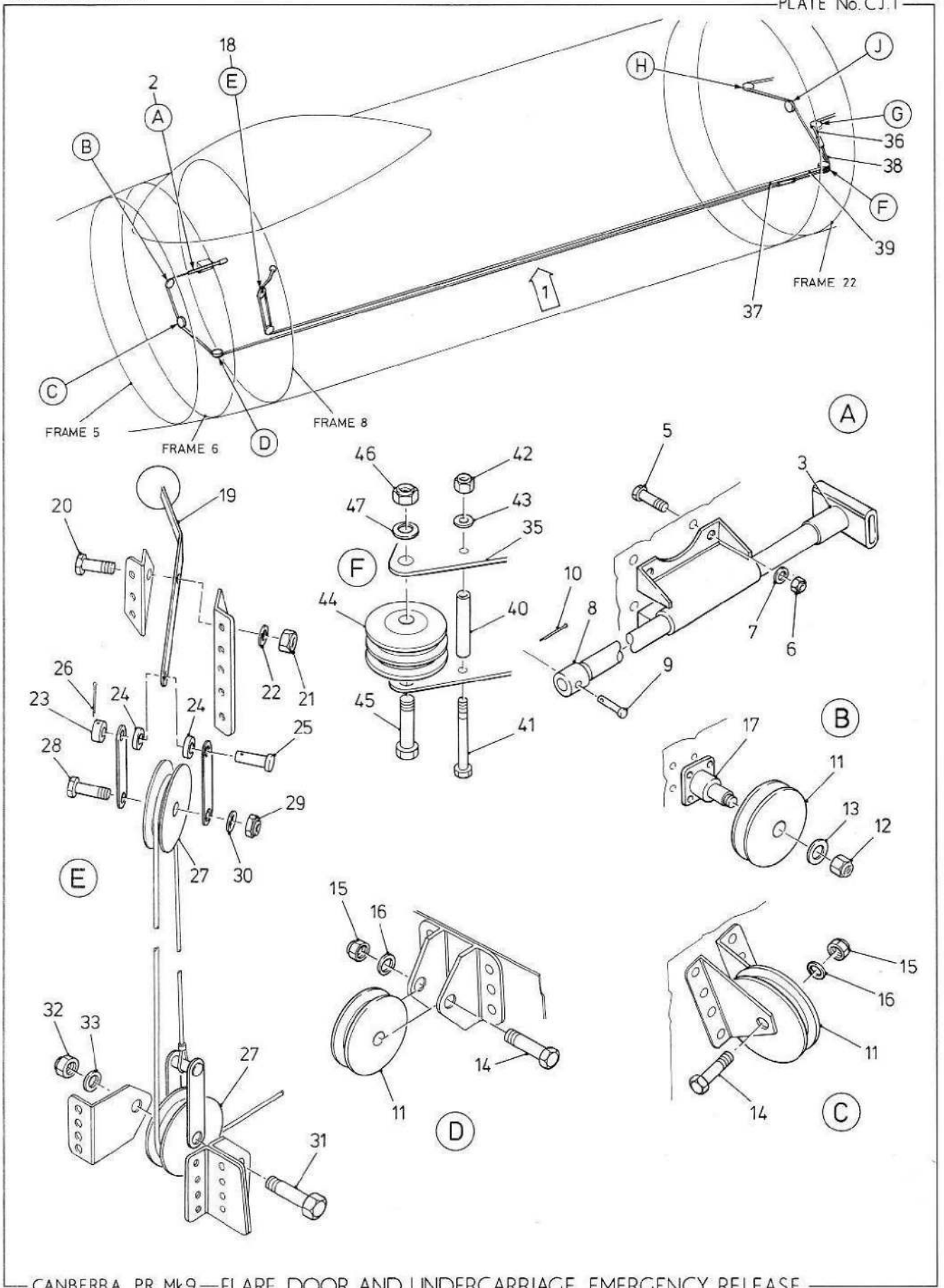
Part No.	Description	No. off	Material Specification	Class of Eqpt M.R. or L.M.	Plate	
	FLARE DOOR AND UNDERCARRIAGE EMERGENCY RELEASE FRONT FUSELAGE (EB8.45.525)	-	-	-	-	R
	Spares for:					
EB8.45.557	CABLE, emergency release	1	-	C	CJ1/1	R
EB8.45.1307	HANDLE and Pulleys at Frames 5-6 Assembly	1	-	-	CJ1/2	R
	Spares for:					
EB8.45.1309	HANDLE, u/c emergency release	1	-	C	CJ1/3	R
	Attachment of handle to panel structure					
A25/1C	Bolt, 2BA	4	-	C	CJ1/5	R
AGS2001/C1	Nut, 2BA	4	-	C	CJ1/6	R
SP13/C	Washer	4	-	C	CJ1/7	R
	Attachment of handle to cable					
AGS899/1	Collar	1	-	C	CJ1/8	R
SP4/Y/A4	Pin, shackle	1	-	C	CJ1/9	R
SP90/C6	Pin, split 1/16in. dia.	1	-	C	CJ1/10	R
AS107	PULLEY, shrouded	3	-	C	CJ1/11	R
	Attachment of pulley (top) to spigot on frame 5					
AGS2002/E1	Nut, 1/4in. BSF	1	-	C	CJ1/12	R
SP13/E	Washer, 1/4in.	1	-	C	CJ1/13	R
	Attachment of pulley at stringers 8 and 9 and frame 6					
A25/8E	Bolt, 1/4in. BSF	2	-	C	CJ1/14	R
AGS2001/E1	Nut, 1/4in. BSF	2	-	C	CJ1/15	R
SP16/E	Washer, 1/4in.	2	-	C	CJ1/16	R
EA9.45.263	SPIGOT, pulley	1	-	C	CJ1/17	R
EB8.45.539	LEVER and Brackets on Frame 8 Assembly	1	-	-	CJ1/18	R
	Spares for:					
EB8.45.547	LEVER, flare door emergency release	1	-	C	CJ1/19	R
	Attachment of lever to bracket					
A25/3E	Bolt, 1/4in. BSF	1	-	C	CJ1/20	R
AGS2001/E1	Nut, 1/4in BSF	1	-	C	CJ1/21	R
SP15/E	Washer, 1/4in.	1	-	C	CJ1/22	R
	Attachment of lever to link					
AGS899/2	Collar	1	-	C	CJ1/23	R
EA1.45.1317	Piece, distance	2	S1	C	CJ1/24	R
SP4/Y/B14	Pin, shackle	1	-	C	CJ1/25	R
SP90/C4	Pin, split, 1/16 in. dia.	1	-	C	CJ1/26	R

CONTROLS
MISCELLANEOUS

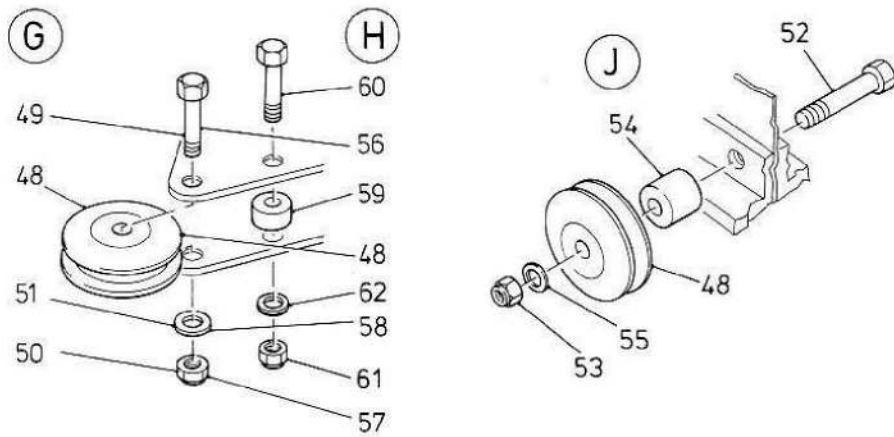
Part No.	Description	No. off	Material Specification	Class of Eqpt M.R. or L.M.	Plate							
						1	2	3	4	5	6	
AS107	PULLEY, shrouded Attachment of top pulley to frame 8	2	-	C	CJ1/27							R
A25/8E AGS2001/E1 SP15/E	Bolt, 1/4 in. BSF Nut, 1/4 in. BSF Washer Attachment of bottom pulleys to frame 8	1 1 1	- - -	C C C	CJ1/28 CJ1/29 CJ1/30							R R R
A25/9E AGS2001/E1 SP15/E	Bolt, 1/4 in. BSF Nut, 1/4 in. BSF Washer	1 1 1	- - -	C C C	CJ1/31 CJ1/32 CJ1/33							R R R
-	FLARE DOOR AND UNDERCARRIAGE EMERGENCY RELEASE, CENTRE FUSELAGE (EB8.45.575) Spares for:	-	-	-	-							R
EB8.84.101/5 EB8.84.101/7 EA2.45.219 EB8.45.581 EB8.45.1025 EB8.45.577 EB8.84.101/8	BRACKET, roller (Pre Mod 5380) BRACKET, roller (Mod 5380) CABLE, flare door CABLE, flare door CABLE, undercarriage CABLE, undercarriage PIECE, distance (Mod 5380) (make from ST1698/D/16) Attachment of distance piece to bracket at frame 22	1 1 1 1 1 1 1	L72 L72 - - - - -	C C C C C C C	- CJ1/35 CJ1/36 CJ1/37 CJ1/38 CJ1/39 CJ1/40							R R R R R R R
A25/18C AGS2001/C3 SP15/C AS108	Bolt, hex hd, 2BA Nut, 2BA Washer PULLEY, shrouded, twin Attachment of pulley to frame	1 1 1 1	- - - -	C C C C	CJ1/41 CJ1/42 CJ1/43 CJ1/44							R R R R
A25/11E AGS2002/E1 SP16/E AS107	Bolt, 1/4in. BSF Nut, 1/4in. BSF Washer, 1/4in. PULLEY, shrouded single Attachment of port inboard pulley	1 1 1 3	- - - -	C C C C	CJ1/45 CJ1/46 CJ1/47 CJ2/48							R R R R
A25/7E AGS2002/E1 SP15/E	Bolt, 1/4in. BSF Nut, 1/4in. BSF Washer, 1/4in. Attachment of centre pulley	1 1 1	- - -	C C C	CJ2/49 CJ2/50 CJ2/51							R R R
A25/17E AGS2002/E1 EB8.45.1033 SP16/E	Bolt, 1/4in. BSF Nut, 1/4in. BSF Packing Washer	1 1 1 1	- - - -	C C C C	CJ1/52 CJ1/53 CJ1/54 CJ1/55							R R R R

CONTROLS
MISCELLANEOUS

Part No.	Description	No. off	Material Specification	Class of Eqpt M.R. or L.M.	Plate										
						1	2	3	4	5	6				
	Attachment of starboard pulley														
A25/8E	Bolt, 1/4in. BSF	1	-	C	CJ2/56										R
AGS2002/E1	Nut, 1/4in. BSF	1	-	C	CJ2/57										R
SP16/E	Washer, 1/4in.	1	-	C	CJ2/58										R
EB8.84.101/6	ROLLER, nylon	1	-	C	CJ2/59										R
	Attachment of roller to bracket at frame 22														
A25/18C	Bolt, hex hd, 2BA	1	-	C	CJ2/60										R
AGS2001/C3	Nut, 2BA	1	-	C	CJ2/61										R
SP15/C	Washer	1	-	C	CJ2/62										R



CANBERRA PR. Mk9—FLARE DOOR AND UNDERCARRIAGE EMERGENCY RELEASE



This file was downloaded
from the RTFM Library.

Link: www.scottbouch.com/rtfm

Please see site for usage terms,
and more aircraft documents.

