

Part No.	Description	No. off	Material Specification	Class of Eqpt M.R. or L.M.	Plate
-	ELECTRICAL INSTALLATION NOSE FUSELAGE (EB8.81.4961)	-	-	-	
	Spares for:				
5CZ/1053794	BLOCK, terminal, type B 2-way	1	-	C	DA1/1
	Attachment of terminal block to stringer A				
AGS2001/A1	Nut, stiff, 6BA	2	-	C	DA1/2
A33/A20	Screw, 6BA	2	-	C	DA1/3
5CZ/1031243	INDICATOR, electro-magnetic	5	-	C	DA1/4
Thorns					
80/10/1200	LAMP, cockpit utility (Mod 5007)	1	-	P	DA1/5
-	MOUNTING, Navigator's Table Lamp (EB8.81.5157)	-	-	-	DA1/6
	Spares for:				
EB8.81.5159	BRACKET, Mounting Table Lamp	1	-	C	DA1/7
	Spares for:				
Oddie 212	CLIP, midget	2	-	C	DA1/8
Oddie 213/2	STUD, midget	2	-	C	DA1/9
Oddie 214	WASHER, midget	2	-	C	DA1/10
	Attachment of mounting bracket to bottom shelf, navigator's rack				
AS1246/1B	Bolt, 4BA	4	-	C	DA1/11
AS1246/1C	Bolt, 2BA	2	-	C	DA1/12
5L/9952254	FILAMENT, 28v. 6w	2	-	C	DA1/13
G.E.C					
S2992	HOLDER, lamp, pendant type	2	-	C	DA1/14
EB8.83.2387	MOUNTING, Strap and Label	1	-	-	DA1/15
	Spares for:				
EB8.83.2385	LABEL	1	L72	C	DA1/16
EEAS132/6	STRAP	1	-	C	DA1/17
-	ELECTRICAL INSTALLATION, FORWARD FUSELAGE (Pre Mod 5478/S) (EB8.81.5127)	-	-	-	
	ELECTRICAL INSTALLATION, FORWARD FUSELAGE (Mod 5478/S Satisfied by CM/CAN/0487/NEAF) (EB8.81.5127x35)	-	-	-	
	Spares for:				
EB8.81.3067	BOX, Fuse No 1 less E/L items	1	-	L	DA2/1

ELECTRICAL INSTALLATION
FORWARD AND NOSE FUSELAGE

Part No.	Description	No. off	Material Specification	Class of Egpt M.R. or L.M.	Plate
	Spares for:				
Plessey CZ62879	BLOCK, fuse, 4-way	18	-	C	DA2/2
	Attachment of fuse block to No 1 fuse box				
A31/B6 EB8.81.3019	Screw, 4BA	2	-	C	DA2/3
	BLOCK, terminal group	3	-	C	DA2/4
	Attachment of terminal block to No 1 fuse box				
AS160/416 5X/1002695	Rivet, 1/8 in. dia.	6	-	C	DA2/5
	BLOCK, terminal, 20 way	2	-	C	DA2/6
	Attachment of terminal block to No 1 fuse box				
A27/BP A31/B24 AGS2035/B EB8.81.3073	Nut, 4BA	4	-	C	DA2/7
	Screw, 4BA	4	-	C	DA2/8
	Washer, shakeproof, 4BA	4	-	C	DA2/9
Silent Bloc Ltd VF/0503	BRACKET	2	Fibreglass	C	DA2/10
10H/1043043	FASTENER, vibrex	8	-	C	DA2/11
10H/1043043	FUSE, 2.5 amp (Pre Mod 5481)	35	-	C	-
10H/1047920	FUSE, 2.5 amp (Mod 5481)	34	-	C	-
10H/1047920	FUSE, dummy (Pre Mod 5481)	2	-	C	-
10H/1047920	FUSE, dummy (Mod 5481)	3	-	C	-
EB8.81.3071	LID, Hinged Fuse Panel No 1 Assembly (Pre Mod 4024)	1	-	L	DA2/12
	Spares for:				
EB8.81.3327	LID, upper	1	DTD797A	C	DA2/13
EB8.81.3329	LID, lower	1	DTD797A	C	DA2/14
EB8.81.6131	LID, Hinged Fuse Panel No 1 Assembly (Mod 4024)	1	-	L	DA2/15
	Spares for:				
EB8.81.6143	LID, upper	1	DTD797A	C	DA2/16
EB8.81.6141	LID, lower	1	DTD797A	C	DA2/17
6A/1062526	RESISTANCE, unit	2	-	L	DA2/18
	Attachment of resistance unit to No 1 fuse box				
AGS2001/B1 A31/B20 SP13/B	Nut, stiff, 4BA	4	-	C	DA2/19
	Screw, 4BA	4	-	C	DA2/20
	Washer, 4BA	4	-	C	DA2/21
- Silent Bloc Ltd 30151 -	SEAL (Make from Ref. 30135)	AR	-	LM	DA2/22
	WASHER, cushion 1/16 in. thick	8	-	C	DA2/23
	BOX, Fuse No 2 (EB8.81.3037)	-	-	-	DA2/24
	Spares for:				
Plessey CZ62879	BLOCK, fuse 4 way	8	-	C	DA2/25

R
R
R

R

Part No.	Description	No. off	Material Specification	Class of Eqpt M.R. or L.M.	Plate
	Attachment of fuse block to No 2 fuse box				
A32/B8	Screw, 4BA	16	-	C	DA2/26
SP13/B	Washer, 4BA	16	-	C	DA2/27
SP47/B	Washer, spring, 4BA	16	-	C	DA2/28
EB8.81.3019	BLOCK, terminal group	2	-	C	DA2/29
	Attachment of terminal block to No. 2 fuse block				
SP58/C	Burr, 1/8 in. dia.	4	-	C	DA2/30
AS160/416	Rivet, 1/8 in. dia.	4	-	C	DA2/31
EB8.81.3025	COVER, terminal	1	DTD797A	C	DA2/32
EB8.81.3011	LID, No. 2 Fuse Box	1	-	C	DA2/33
	Spares for:				
EEAS117/2	SCREW, cover	6	-	C	DA2/34
EEAS28/2CU	WASHER	12	DTD124A	C	DA2/35
EEAS42	WASHER, leather	6	-	C	DA2/36
-	SEAL, (Make from Ref. 30135)	AR	-	LM	DA2/37
-	BOX, Fuse No. 3 (EB8.81.3425)	-	-	-	DA2/38
	Spares for:				
CZ62879	BLOCK, fuse 4 way	6	-	C	DA3/39
	Attachment of fuse block to No. 3 fuse box				
A31/B6	Screw, 4BA	12	-	C	DA3/40
AGS2035/B	Washer, shakeproof 4BA	12	-	C	DA3/41
EB8.81.3429	COVER, No. 3 Fuse Box	1	-	C	DA3/42
	Spares for:				
Silent Bloc Ltd V2/0602	FASTENER, vibrex	4	-	C	DA3/43
Silent Bloc Ltd 30151	WASHER, cushion 1/16 in. thick	4	-	C	DA3/44
	SEAL (Make from Ref. 30135)	AR	-	LM	DA3/45
	BOX, Fuse No. 4 (EB8.81.5961)	-	-	-	DA2/46
	Spares for:				
5X/3271	BLOCK, fuse 4-way	10	-	C	DA3/47
	Attachment of fuse block to No 4 fuse box				
AS1246/1B	Bolt, 4BA	20	-	C	DA3/48
EB8.81.3019	BLOCK, terminal group	1	-	C	DA3/49
	Attachment of terminal block to No. 4 fuse box				
AS2229/408	Rivet, 1/8 in. dia.	2	-	C	DA3/50
5X/1002695	BLOCK, terminal, 20-way	1	-	C	DA3/51
	Attachment of terminal block to No. 4 fuse box				
A32/B28	Screw, 4BA	2	-	C	DA3/52
EB8.81.6651	LABEL, fuse 308-311	1	-	C	DA3/53
EB8.81.6653	LABEL, fuse 312-315	1	-	-	DA3/54
EB8.81.5997	LID, No. 4 fuse box	1	-	L	DA3/55

Part No.	Description 1 2 3 4 5 6	No. off	Material Specification	Class of Eqpt M.R. or L.M.	Plate
	Attachment of fuse block to aft diaphragm				
AGS2001/B1	Nut, stiff 4BA	2	-	C	DA2/75
A31/B24	Screw, 4BA	2	-	C	DA2/76
CZ23212-1	BLOCK, terminal 20-way	3	-	L	DA2/77
	Attachment of terminal block to 'Z' member				
AGS2008/B1	Nut, anchor	3	-	C	DA2/78
AGS2019/B1	Nut, anchor	3	-	C	DA2/79
A31/B28	Screw, 4BA	6	-	C	DA2/80
SP15/B	Washer	6	-	C	DA2/81
CZ 24285	BLOCK, terminal 10-way	2	-	-	DA2/82
	Attachment of terminal block to console				
AGS2001/B1	Nut, stiff 4BA	4	-	C	DA2/83
A31/B28	Screw, 4BA	4	-	C	DA2/84
SP15/B	Washer	4	-	C	DA2/85
EB8.81.4991	BLOCK, terminal assembly	1	-	-	DA2/86
	Attachment of terminal block to console				
AS1242/2B	Bolt, 4BA	2	-	C	DA2/87
EB8.81.5211	BLOCK, Resistor	1	-	-	DA2/88
	Spares for:				
AGS2001/B1	NUT, 4BA	14	-	C	DA2/89
SP15/B	WASHER	14	-	C	DA2/90
AGS2037/B	WASHER	14	-	C	DA2/91
	Attachment of resistor block to console				
A31/B20	Screw, 4BA	4	-	C	DA2/92
SP15/B	Washer	4	-	C	DA2/93
Plessey					
CZ50207	BLOCK, terminal 5-way	1	-	-	DA2/94
	Attachment of terminal block to console				
A31/B28	Screw, 4BA	2	-	C	DA2/95
SP15/B	Washer	2	-	C	DA2/96
SP40/A16	GROMMET	1	-	C	DA2/97
	GUARD, Fuse (EB8.81.6067)	1	-	C	DA2/98
	Spares for:				
EB8.81.6067/A	COVER	2	L72x16SWG	C	DA2/99
EB8.81.6809	LABEL, fuse (Mod 5131)	1	-	C	DA2/100
EB8.81.6067/G	SPRING, 12 in. long x 1/4 in. o/d (Made from Terry No 761 20 swg)	2	-	C	DA2/101

ELECTRICAL INSTALLATION
FORWARD AND NOSE FUSELAGE

Part No.	Description	No. off	Material Specification	Class of Eqpt M.R. or L.M.	Plate
EB8.81.5857	HOLDER, fuse label	1	-	-	DA2/102
EB8.81.5019/A	LUG	1	-	-	DA2/103
	Attachment of lug to console				
AGS2001/B1	Nut, stiff 4BA	1	-	C	DA2/104
A31/B12	Screw, 4BA	1	-	C	DA2/105
SP15/B	Washer	1	-	C	DA2/106
B.T.H. GJ3M	RECTIFIER	1	-	L	DA2/107
	Attachment of rectifier to console				
EB8.81.5567	Clip	1	-	C	DA2/108
AGS2002/B3	Nut, stiff, 4BA	1	-	C	DA2/109
A39/B8	Screw, 4BA	1	-	C	DA2/110
SP15/B	Washer	1	-	C	DA2/111
D5900	SWITCH magnetic relay type 20B No 3	11	-		
	Attachment of relay switch to console				
A31/B36	Screw, 4BA	44	-	C	DA2/112
SP15/B	Washer	44	-	C	DA2/113
	PANEL, camera control console (EB8.81.5059) (See Section ED)	-	-	-	DA2/114
	SEAL (Make from Ref 30135)	AR		LM	DA2/115
	CRATE, Instrument (EB8.81.4953)	-	-	-	DA2/116
	Spares for:				
10U/16596	AMPLIFIER, type A1961	1	-	P	DA4/117
	Attachment of amplifier to instrument crate				
A25/16B	Bolt, 4BA	4	-	C	DA4/118
AS2807/4/09	Tube, distance	4	T45x20SWG	LM	DA4/119
SP15/B	Washer, 4BA	4	-	C	DA4/120
-	BOX, Junction, No. 16 (EB8.81.4887)	-	-	-	DA4/121
	Spares for:				
5X/1004088	BLOCK, terminal, 10 way	1	-	C	DA4/122
5X/1002695	BLOCK, terminal, 20 way	2	-	C	DA4/123
	Attachment of terminal block to JB16				
A31/B28	Screw, 4BA	6	-	C	DA4/124
Plessey CE51102	CAPACITOR	1	-	L	DA4/125

Part No.	Description 1 2 3 4 5 6	No. off	Material Specification	Class of Eqpt M.R. or L.M.	Plate	
B.T.H. GJ3M 10D/0751502	RECTIFIER	5	-	L	DA4/126	
	RECTIFIER, metal	1	-	L	DA4/127	
5CW/5529	SEAL (Make from Ref. 30135)	AR	-	LM	DA4/128	R
	SWITCH, magnetic relay, type S5	3	-	L	DA4/129	
A27/BT S.T.C. 4184GD	Attachment of magnetic relay switch to JB16					
	Locknut, 4BA	12	-	C	DA4/130	
AGS2001/A1 A31/A12 6A/4337885 6A/4338332	RELAY	1	-	L	DA4/131	
	Attachment of relay switch to JB16					
AGS2001/A1 A31/A12 6A/4337885 6A/4338332	Nut, stiff, 6BA	2	-	C	DA4/132	
	Screw, 6BA	2	-	C	DA4/133	
AGS2001/A1 A31/A12 6A/4337885 6A/4338332	BOX, junction, type C (Pre Mod 5162)	1	-	P	DA4/134	
	BOX, junction (Mod 5162)	1	-	P	DA4/135	
AGS2001/A1 A31/A12 6A/4337885 6A/4338332	Attachment of junction box to instrument crate					
	Bolt, 2BA	2	-	C	DA4/136	
A25/1C 6A/5946 6A/3122	COMPUTER, type 1.264/M.S2	1	-	P	DA4/137	
	COMPUTER, flight	1	-	P	DA4/138	
A25/1C 6A/5946 6A/3122	MOUNTING, type 936	1	-	L	DA4/139	
	PLATE, back, c/w Socket	1	-	P	DA4/140	
A25/1C 6A/5946 6A/3122	RACK, mounting	1	-	P	DA4/141	
	Attachment of mounting rack to instrument crate					
AGS2001/B1 SP15/B 6A/5950	Nut, stiff, 4BA	4	-	C	DA4/142	
	Washer, 4BA	4	-	C	DA4/143	
AGS2001/B1 SP15/B 6A/5950	TRAY, mounting	1	-	L	DA4/144	
	DUCT, cable	1	-	C	DA2/145	
EB8.81.4633 EB8.81.4635	DUCT, cable	1	-	C	DA2/146	
	DUCT, cable	1	-	C	DA2/147	
EB8.81.4637 EB8.81.4661	DUCT, cable	1	-	C	DA2/148	
	DUCT, cable	1	-	C	DA2/149	
EB8.81.4665 EB8.81.4667	DUCT, cable	1	-	C	DA2/150	
	DUCT, cable	1	-	C	DA2/151	
EB8.81.4687 EB8.81.4695	DUCT, cable	1	-	C	DA2/152	
	DUCT, cable	1	-	C	DA2/153	
EB8.81.4697	DUCT, cable	1	-	C	DA2/154	R
	DUCTS, Cable Forward Fuselage (EB8.81.3953)	-	-	-		
EB8.81.3945 EB8.81.5153 EB8.81.3961	Spares for:					
	BRACKET, cable	1	Glasscloth	C	DA2/155	
EB8.81.3945 EB8.81.5153 EB8.81.3961	BRACKET, cable	2	Glasscloth	C	DA2/156	
	DUCT, cable	1	-	C	DA2/157	
EB8.81.3945 EB8.81.5153 EB8.81.3961	EQUIPMENT, Pressure Bulkhead to Frame 12 (EB8.81.4923)	-	-	-	DA2/158	R

ELECTRICAL INSTALLATION
FORWARD AND NOSE FUSELAGE

Part No.	Description	No. off	Material Specification	Class of Eqpt M.R. or L.M.	Plate							
						1	2	3	4	5	6	
	Spares for:											
	EQUIPMENT, Upper Bay, Frame 9-12 (EB8.81.3599)	-	-	-	DA2/159							R
	Spares for:											
Graviner C508	BASE, relay unit	1	-	L	DA6/160							
	Attachment of base to equipment bay floor											
A25/9C SP10/C SP47/C 5X/1002694	Bolt, 2BA	3	-	C	DA6/161							
	Washer, 2BA	3	-	C	DA6/162							
	Washer, spring, 2BA	3	-	C	DA6/163							
	BLOCK, terminal, 5-way	1	-	C	DA6/164							
	Attachment of 5-way terminal block to bracket on frame 12A											
A31/B28 SP10/B	Screw, 4BA	2	-	C	DA6/165							
	Washer, 4BA	2	-	C	DA6/166							
	BOX, Distribution No. 1 (EB8.81.3601)	-	-	-	DA6/167							R
	Spares for:											
5X/6480 CZ62879	BAR, commoning, 4-way	13	-	C	DA5/168							
	BLOCK, fuse, 4-way	15	-	C	DA5/169							R
	Attachment of fuse block to channel in distribution box											
A31/B8 AGS2035/B 5X/1004088 5X/1002695	Screw, 4BA	2	-	C	DA5/170							
	Washer, shakeproof, 4BA	2	-	C	DA5/171							
	BLOCK, terminal, 10-way	1	-	C	DA5/172							
	BLOCK, terminal, 20-way	5	-	C	DA5/173							
	Attachment of terminal block to distribution box											
A31/B8 EB8.81.3019	Screw, 4BA	12	-	C	DA5/174							
	BLOCK, terminal, group	1	-	C	-							R
	Attachment of terminal block to distribution box											
AS2229/407 SP10/B EB8.81.4711	Rivet, 1/8 in. dia.	2	-	C	-							R
	Washer, 4BA	2	-	C	-							R
	BRACKET, adaptor, relay	2	S84	C	DA5/178							
	Attachment of adaptor bracket to box											
A31/B8 10C/0115567 EB8.81.3841	Screw, 4BA	4	-	C	DA5/179							
	CAPACITOR, 0.5 mf 250V	3	-	C	DA5/180							
	COVER, transparent, 10-way (Make from Ref. 5X/3275)	1	-	LM	DA5/181							

ELECTRICAL INSTALLATIONS
FORWARD AND NOSE FUSELAGE

Part No.	Description	No. off	Material Specification	Class of Egpt M.R. or L.M.	Plate						
						1	2	3	4	5	6
EB8.81.3843	COVER, transparent, 20-way (Make from Plessey Part CZ25111-Ref: 5X/3275)	1	-	LM	DA5/182						
Silent Bloc Ltd V2/0602	FASTENER, vibrex	6	-	C	DA5/183						
10H/9718191	FUSE, 10 amp (Pre Mod 5481)	1	-	C	-						R
10H/9718191	FUSE, 10 amp (Mod 5481)	2	-	C	-						R
10H/1047920	FUSE, dummy (Pre Mod 5481)	11	-	C	-						R
10H/1047920	FUSE, dummy (Mod 5481)	10	-	C	-						R
SP40/B32	GROMMET	1	-	C	DA5/184						
SP93/A20	GROMMET	1	-	C	DA5/185						
5X/9450403	PILLAR, fixing	1	-	C	DA5/186						R
B.T.H. GJ3M	RECTIFIER	1	-	L	DA5/187						R
	RECTIFIER	1	-	L	DA5/188						R
	SEAL (Make from Ref. 30135)	AR	-	LM	DA5/189						R
5CW/6252	SWITCH, magnetic relay, type 10B No 8	2	-	L	DA5/190						
D5900	SWITCH, magnetic relay, type 20B No 3 (Mod 4995)	15	-	L	DA5/191						R
	Attachment of relay switch to mounting plate										
A31/B36	Screw, 4BA	68	-	C	DA5/192						
5CW/6595	SWITCH, magnetic relay type D3822B	1	-	L	DA5/193						
	Attachment of magnetic switch to distribution box										
A31/B28	Screw, 4BA	2	-	C	DA5/194						
5CW/5105	SWITCH, torque	1	-	P	DA5/195						
	Attachment of torque switch to distribution box										
AGS2001/B1	Nut, stiff 4BA	4	-	C	DA5/196						
A31/B16	Screw, 4BA	4	-	C	DA5/197						
AGS2035/B	Washer, shakeproof 4BA	4	-	C	DA5/198						
5X/9400089	TERMINATION, lug, crimping	1	-	C	DA5/199						R
	Attachment of termination lug to terminal on distribution box										
AGS2001/E4	Nut, stiff, 1/4 in. BSF	1	-	C	DA5/200						
EB7.81.1035	Washer	1	Copper	C	DA5/201						
Silent Bloc Ltd 30151	WASHER, cushion	6	-	C	DA5/202						
EB8.74.125	COWL, inverter cooling	1	-	C	DA6/203						
	Attachment of cowl to skin between frames 10 and 11										
BEAS1/2C	Screw, csk, 2BA	10	S96	C	DA6/204						R
EB8.74.123	DUCT, inverter cooling	1	L16	C	DA6/205						
	Attachment of duct to inverter and cowl inlet										
King A/C Ltd C4596/2-7/16/E	Clip, coronation	4	-	C	DA6/206						R

ELECTRICAL INSTALLATION
FORWARD AND NOSE FUSELAGE

Part No.	Description	No. off	Material Specification	Class of Eqpt M.R. or L.M.	Plate
Dunlop DAS393/36/2-1/2 SUB/4938 SUB/5953	Hose, coupling	2	-	C	DA6/207
	INVERTER, type 100A	2	-	P	DA6/208
	INVERTER, type 108	1	-	P	DA6/209
	Attachment of inverter type 108 to equipment bay floor				
A102/40E SUC/4939	Bolt, 1/4 in. UNF	4	-	C	DA6/210
	PANEL, Control, type 12	2	-	P	DA6/211
	Attachment of control panel to equipment bay floor				
A104/1E SP15/E SUC/6030	Bolt, 1/4 in. UNF	4	-	C	DA6/212
	Washer, 1/4 in.	4	-	C	DA6/213
	PANEL, control, type 26 (with mod Elec, B416)	1	-	P	DA6/214
	Attachment of control panel to frame 12A				
A25/5E SUC/6042	Bolt, 1/4 in. BSF	4	-	C	DA6/215
	REGULATOR, electronic, type 2B,	1	-	P	DA6/216
	Attachment of regulator to equipment bay floor				
EA3.81.1787 Graviner C509 5CY/4316	Bolt	4	S92	C	DA6/217
	RELAY UNIT	1	-	P	
	SUPPRESSOR, radio interference type G. No. 2	2	-	P	DA6/219
	Attachment of suppressor to equipment bay floor				
A31/B24 SP10/B 6T/1665 6T/1666 6T/1667	Screw, 4BA	2	-	C	DA6/220
	Washer, 4BA	2	-	C	DA6/221
	SWITCH, acceleration, type A	1	-	L	DA6/222
	SWITCH, acceleration, type B	1	-	L	DA6/223
	SWITCH, altitude	2	-	L	DA6/224
	Attachment of switch to bracket on frame 12A				
AGS2001/C1 A32/C16	Nut, stiff 2BA	8	-	C	DA6/225
	Screw, 2BA	8	-	C	DA6/226
	TRAY, Mounting for Control Panel Voltage and Frequency Type 26 (Mod 3125) (EB8.81.5583)	-	-	-	DA6/227
	Spares for:				
EB8.81.5583/I	CATCH, securing	2	L1	C	DA6/228
EB8.81.5583/J	CIRCLIP	2	-	C	DA6/229
EB8.81.5583/L	DOWEL	2	DTD423	C	DA6/230

R

Part No.	Description	No. off	Material Specification	Class of Eqpt M.R. or L.M.	Plate						
						1	2	3	4	5	6
EB8.81.5583/H	NUT, 1/4 in. BSF	2	S1	C	DA6/231						
EB8.81.5583/K	PILLAR	2	DTD423A	C	DA6/232						
EB8.81.5583/G	SCREW, securing	2	SI	C	DA6/233						
EB8.81.5583/M	WASHER, thin	2	-	C	DA6/234						
EB8.81.6051	GUARD, switch (Mod 3894)	1	-	C	DA6/235						
	INVERTER BAY (EB8.81.1307)	-	-	-	DA2/236						R
	Spares for:										
EB8.74.101	DUCT, inverter cooling	1	-	C	DA6/237						
	Attachment of duct to inverter and inlet cowl										
King A/C Ltd C4596/2-1/2/E	Clip, coronation	4	-	C	DA6/238						R
King A/C Ltd C4596/2-11/16/B	Clip, coronation (Pre Mod 5477)	2	-	C	DA6/239						R
Hymatic C14087-2 11/16P	Clamp (Mod 5477)	2	-	C	DA6/240						
EB8.81.1385	Hose	2	-	C	DA6/241						
Dunlop DAS393/40/2 3/8	Hose, coupling	1	-	C	DA6/242						
SUB/6731	INVERTER, type 103/A	2	-	P	DA6/243						
	Attachment of inverter to mounting between frames 9 and 10										
A25/5G	Bolt, 5/16 in. BSF	8	-	C	DA6/244						
A27/GP	Nut, 5/16 in. BSF	8	-	C	DA6/245						
SP47/G	Washer, spring 5/16 in.	8	-	C	DA6/246						
5CW/4620	SWITCH magnetic, relay, type T, No 1	3	-	P	DA6/247						
	Attachment of switch to mounting channel										
A25/2C	Bolt, 2BA	6	-	C	DA6/248						
5CW/5016	SWITCH magnetic, starting, type A No. 5	3	-	P	DA6/249						
	Attachment of starting switch to quick release tray										
A25/1C	Bolt, 2BA	12	-	C	DA6/250						
A27/CP	Nut, 2BA	12	-	C	DA6/251						
SP47/C	Washer, spring, 2BA	12	-	C	DA6/252						
EB8.81.1311	TRAY, Quick Release, Group	1	-	C	DA6/253						
	Spares for:										
EB8.81.1329	NUT, knurled, 1/4 in. BSF	1	S1	C	DA6/254						
EB8.81.1327	PEG, locating	2	S96	C	DA6/255						
	Attachment of locating peg to tray										
A27/CP	Nut, 2BA	2	-	C	DA6/256						

ELECTRICAL INSTALLATION
FORWARD AND NOSE FUSELAGE

Part No.	Description	No. off	Material Specification	Class of Eqpt M.R. or L.M.	Plate						
						1	2	3	4	5	6
SP13/C EB8.81.1331	Washer, 2BA PEG	2 1	- DTD683	C C	DA6/257 DA6/258						
AS2229/404	Attachment of peg to tray Rivet, 1/8 in. dia.	2	-	C	DA6/259						
A25/1C A27/CP SP47/C	Attachment of quick release tray to wheel well wall angle and angle on frame 9 Bolt, 2BA Nut, 2BA Washer, spring, 2BA	4 4 4	- - -	C C C	DA6/260 DA6/261 DA6/262						
	MOUNTING, of Inverter Type 201 and Voltabloc Battery (Mod 5477) (EB8.81.4517)	-	-	-	DA6/263						R
	Spares for:										
EB8.82.4523	ANGLE, retaining Attachment of retaining angle to retaining flap	2	L65	C	DA7/264						
AS164/405 5J/3364 EB8.81.4521	Rivet, 1/8 in. dia. BATTERY, secondary, alkaline BRACKET, retaining Attachment of retaining bracket to cross channel	4 1 2	- - L65	C P C	DA7/265 DA7/266 DA7/267						
AS156/406 EB8.81.4629	Rivet, 1/8 in. dia. COVER, battery Attachment of battery cover to retaining tie rod	10 1	- -	C C	DA7/268 DA7/269						
AGS3413/J EB8.74.109 EB8.74.119	Nut, wing 3/8 in. UNF COVER, end type 201 inverter DUCT, type 201 inverter Attachment of duct to inverter end cover and inlet cowl	2 1 1	- - -	C C C	DA7/270 DA7/271 DA7/272						
King A/C Ltd C4596/2-11/16/B Hymatic C14087-2 11/16P Dunlop DAS393/40/2 3/8 EB8.81.4653 5UB/6475	Clip, coronation (Pre Mod 5477) Clamp (Mod 5477) Hose, coupling FLAP, retaining INVERTER, type 201B Attachment of inverter to base plate and angle bracket	4 4 2 1 1	- - - - -	C C C C P	DA7/273 DA7/274 DA7/275 DA7/276 DA7/277						R R
AS1242/5E	Bolt, 1/4 in. BSF	2	-	C	DA7/278						

Part No.	Description	No. off	Material Specification	Class of Eqpt M.R. or L.M.	Plate
AS1242/6E A27/EP SP55/E EB8.81.4529	Bolt, 1/4 in. BSF Nut, 1/4 in. BSF Washer, spring, 1/4 in. LATCH, retaining	2 4 4 2	- - - -	C C C C	DA7/279 DA7/280 DA7/281 DA7/282
	Attachment of retaining latch to battery tray				
AS164/406 AGS3413/E EB8.81.4527	Rivet, 1/8 in. dia. NUT, wing, 1/4 in. UNF ROD-TIE, retaining	6 2 2	- - S93	C C C	DA7/284 DA7/285
	Attachment of tie rod to retaining bracket				
EB8.81.4525 EB8.81.4519	Bolt, retaining SPIGOT, retaining	2 4	S96 S1	C C	DA7/286 DA7/287
	Attachment of retaining spigot to inverter bracket				
A27/EP SP13/E EB8.81.4655	Nut, 1/4 in. BSF Washer, 1/4 in. TRAY, battery	4 4 1	- - -	C C C	DA7/288 DA7/289 DA7/290
	PANELS, Main Electrical (EB8.81.2001) (See Section ED)	-	-	-	DA2/291 R
5J/3375 EEAS132/9 EEAS132/12 27N/93	PLUG, battery, quick disconnect STRAP, cable, c/w buckle STRAP, cable c/w buckle SWITCH, inertia	1 10 10 4	- - - -	L C C P	DA2/292 DA7/293 DA7/294 DA2/295
	Attachment of inertia switch to frame 12A				
A25/4C A31/C24 AGS2035/C SP13/C	Bolt, 2BA, starboard side Screw, 2BA, port side Washer, 2BA, port side Washer, 2BA, starboard side	8 8 8 8	- - - -	C C C C	DA2/296 DA2/297 DA2/298 DA2/299
	WIRING, Nose Undercarriage (EA3.81.295)	-	-	-	DA2/300 R
	Spares for:				
5CZ/868 Dowty DN1322Z Mk.2 OR Dowty DN1322Z Mk.3	BLOCK, terminal, type, B No. 1 SWITCH, micro (Mod 4826) SWITCH, micro	1 1 1	- - -	L L L	DA7/301 DA2/302 R DA2/302 R
	Attachment of micro switch to floor channel member				
A27/AP	Nut, 6BA	2	-	C	DA7/303

ELECTRICAL INSTALLATION
FORWARD AND NOSE FUSELAGE

Part No.	Description	No. off	Material Specification	Class of Eqpt M.R. or L.M.	Plate						
						1	2	3	4	5	6
A33/A20 SP47/A	Screw, 6BA	2	-	C	DA7/304						
	Washer, spring 6BA	2	-	C	DA7/305						
	MOUNTING, Amplifier and Flashing Unit (Pre Mod 5478/S) (EB8.81.4267)	-	-	-	DA2/306						R
	MOUNTING, Amplifier and Flashing Unit (Mod 5478/S Satisfied by CM/CAN/0487/NEAF) (EB8.81.4267x4)	-	-	-	DA2/307						
6A/4834	Spares for:										
	AMPLIFIER (Pre Mod 4404)	1	-	P	DA7/308						
	Attachment of amplifier to structure between frames 5 and 6, starboard										
A25/6B SP13/B 5CZ/5448	Bolt, 4BA (Pre Mod 4404)	4	-	C	DA7/309						
	Washer, 4BA (Pre Mod 4404)	4	-	C	DA7/310						
	FLASHER UNIT, type A (Pre Mod 5478/S)	1	-	P	DA7/311						
	Attachment of flasher unit to structure between frames 5 and 6, starboard										
A25/1C SP13/C	Bolt, 2BA (Pre Mod 5478/S)	4	-	C	DA7/312						
	Washer, 2BA (Pre Mod 5478/S)	4	-	C	DA7/313						
	MOUNTING, Auto-Stabiliser Switch (EB8.81.3489)	-	-	-	DA2/314						R
6S/70 6S/53	Spares for:										
	PLATE, switch, type A	1	-	P	DA8/315						
	SWITCH, auto-stabiliser	1	-	L	DA8/316						
	Attachment of switch and plate to bracket on side panel										
AGS2001/A1 A33/A12 SP10/A	Nut, 6BA	2	-	C	DA8/317						
	Screw, 6BA	2	-	C	DA8/318						
	Washer, 6BA	2	-	C	DA8/319						
	MOUNTING, Auto-Stabiliser Units, between frame 5 and pressure bulkhead (EB8.81.4893)				DA2/320						R
6S/537 6S/1	Spares for:										
	AMPLIFIER UNIT, Type J. (Mod. 3861)	1	-	P	DA8/321						
	GYRO UNIT, Type A.	1	-	P	DA8/322						
	Attachment of gyro unit to bracket on pressure bulkhead										
A31/B20 SP47/B	Screw, 4BA	3	-	C	DA8/323						
	Washer, spring, 4BA	3	-	C	DA8/324						

ELECTRICAL INSTALLATION
FORWARD AND NOSE FUSELAGE

Part No.	Description	No. off	Material Specification	Class of Eqpt. M.R. or L.M.	Plate								
						1	2	3	4	5	6		
	Attachment of secondary battery to mounting structure												
AS1242/1B	Bolt, 4BA (Pre Mod 5158)	4	-	C	DA8/346							R	
A25/4C	Bolt, 2BA (Pre Mod 5158)	2	-	C	DA8/347							R	
A27/BP	Nut, 4BA (Pre Mod 5158)	4	-	C	DA8/348							R	
A27/CS	Nut, slotted, 2BA (Pre Mod 5158)	2	-	C	DA8/349							R	
AGS113/C	Nut, wing, 2BA (Pre Mod 5158)	2	-	C	DA8/350							R	
SP90/C8	Pin, split, 1/16 in. dia. (Pre Mod 5158)	2	-	C	DA8/351							R	
EB8.81.3543	Plate, battery retaining (Pre Mod 5158)	1	L72	C	DA8/352							R	
EB8.81.3541	Rod, battery retaining (Pre Mod 5158)	2	S1	C	DA8/353							R	
SP13/B	Washer, 4BA (Pre Mod 5158)	4	-	C	DA8/354							R	
SP13/C	Washer, 2BA (Pre Mod 5158)	2	-	C	DA8/355							R	
SP55/C	Washer, spring, 2BA (Pre Mod 5158)	2	-	C	DA8/356							R	
Saft 20V03KHC	BATTERY, secondary, nickel cadmium 24V (Mod 5158, satisfied by SEM/CAN/074/STC)	1		P	DA8/357							R	
	Attachment of secondary battery to mounting structure												
	Block, spacer (Make from fabric sheet SF/9400955) (Mod 5158)	2	BS2572 Type 2	LM	DA8/358							R	
AS1242/1B	Bolt, 4BA (Mod 5158)	4		C	DA8/359							R	
A25/4C	Bolt, 2BA (Mod 5158)	2		C	DA8/360							R	
5J	Cover, battery (salvaged from old battery) (Mod 5158)	1		C	DA8/361							R	
30180	Cover, securing (Mod 5158)	1		C	DA8/362							R	
AGS2001/B2	Nut, 4BA (Mod 5158)	4		C	DA8/363							R	
AGS2001/C2	Nut, 2BA (Mod 5158)	4		C	DA8/364							R	
AGS113/C	Nut, wing, 2BA (Mod 5158)	2		C	DA8/365							R	
SP90/C5	Pin, split, 1/16 in. dia. (Mod 5158)	2		C	DA8/366							R	
	Rod, retaining (Make from Steel Rod 30A/9610222 and Steel Bar 30A/9610225) (Mod 5158)	2	BS7-1-D Group A	LM	DA8/367							R	
EEAS1/4C	Screw, 2BA (Mod 5158)	4		C	DA8/368							R	
SP13/B	Washer, 4BA (Mod 5158)	4		C	DA8/369							R	
SP13/C	Washer, 2BA (Mod 5158)	4		C	DA8/370							R	
-	MOUNTING, Emergency Lighting and High Intensity Lamp, Pilot's Lamp, Coaming Panel (EB8.81.4719)	-	-	-	DA2/371							R	
	Spares for:												
EB8.81.4719/A	BRACKET, mounting, floodlight	1	DTD797A	C	DA9/372							R	
EB8.81.4719/B	BRACKET, mounting, floodlight	1	DTD797A	C	DA9/373							R	
EB8.81.4719/C	BRACKET, mounting, floodlight	3	DTD797A	C	DA9/374							R	
	Attachment of mounting bracket to structure forward of frame 6												
AS2227/405	Rivet, 1/8 in. dia.	18	-	C									
5L/9951271	FILAMENT, 28V 3.5W	3	-	C	DA9/376							R	
5L/9951282	FILAMENT, 28V 12W	2	-	C	DA9/377							R	
5CX/4330201	LAMP, cockpit, high intensity	2	-	C	DA9/378							R	

Part No.	Description 1 2 3 4 5 6	No. off	Material Specification	Class of Eqpt M.R. or L.M.	Plate	
A25/1/2B AGS2001/B1 SP10/B 5CX/4330206	Attachment of cockpit lamp to mounting bracket on roof					
	Bolt, 4BA	4	-	C	DA9/379	R
	Nut, stiff, 4BA	4	-	C	DA9/380	
	Washer, 4BA	4	-	C	DA9/381	
A25/1/2B AGS2001/B1 SP10/B	LAMP, cockpit, type D, yellow	3	-	C	DA9/382	
	Attachment of cockpit lamp to mounting brackets on roof and limit switch panel					
	Bolt, 4BA	6	-	C	DA9/383	R
	Nut, stiff, 4BA	6	-	C	DA9/384	
EB8.81.5807/A	Washer, 4BA	2	-	C	DA9/385	
	MOUNTING, Floodlight, Control Panel (Mod 2758) (EB8.81.5807)	-	-	-	DA2/386	R
	Spares for:					
	BRACKET, mounting	1	DTD787A	C	DA9/387	
SP80/304 SP13/B 5L/9951271 5CX/1041518	Attachment of bracket to diaphragm at frame 2 port					
	Rivet, 1/4 in. dia.	2	-	C	DA9/388	
	Washer, 4BA	2	-	C	DA9/389	
	FILAMENT, 28V, 3.5 W.	1	-	C	DA9/390	
A25/1B AGS2001/B1 SP13/B	LAMP, cockpit type D. red	1	-	C	DA9/391	
	Attachment of cockpit lamp to mounting bracket					
	Bolt, 4BA	2	-	C	DA9/392	
	Nut, 4BA	2	-	C	DA9/393	
5CX/4330002	Washer, 4BA	2	-	C	DA9/394	
	MOUNTING, Floodlight, Navigator, Aft (EB8.81.3863)	-	-	-	DA2/395	R
	Spares for:					
	LAMP, cockpit, type 1A	1	-	C	DA9/396	
AS1246/2B SP15/B	Attachment of cockpit lamp to bracket on support beam, pilot's dash.					
	Bolt, 4BA	3	-	C	DA9/397	
	Washer, 4BA	3	-	C	DA9/398	
	MOUNTING, Floodlight, Undercarriage Panel (EB8.81.4671)	-	-	-	DA2/399	R
EB8.81.4671/A	Spares for:					
	BRACKET, mounting, floodlight	1	DTD797A	C	DA9/400	

ELECTRICAL INSTALLATION
FORWARD AND NOSE FUSELAGE

Part No.	Description	No. off	Material Specification	Class of Eqpt M.R. or L.M.	Plate										
						1	2	3	4	5	6				
	Attachment of mounting bracket to inner skin panel between frame 7 and 8														
AGS2048/423B5	Rivet, 1/8 in. dia.	6	-	C	DA9/401										R
SP10/B	Washer, 4BA	6	-	C	DA9/402										
5L/9951271	FILAMENT, 28V.3.5 W	1	-	C	DA9/403										
5CX/1041518	LAMP, cockpit, type D, red	1	-	C	DA9/404										
	Attachment of cockpit lamp to mounting bracket														
AS1246/1B	Bolt, 4BA	2	-	C	DA9/405										
	MOUNTING, Night Lighting, Rudder Feel Simulator Gauges (Mod 3336) (EB8.81.5875)	-	-	-	DA2/406										R
	Spares for:														
5X/1002694	BLOCK, terminal, 5-way	1	-	C	DA9/407										
5X/9149641	COVER, terminal, block	1	-	C	DA9/408										
5L/9959118	FILAMENT, miniature	4	-	C	DA9/409										
5CX/1143215	LAMPHOLDER, bridge	2	-	C	DA9/410										
5X/9450403	PILLAR, fixing	2	-	C	DA9/411										
EEAS146/C	SLEEVE, 3/8 in. long "Yellow"	3	-	C	DA9/412										
	MOUNTING, pillar Light, Undercarriage Panel (EB8.81.4575)	-	-	-	DA2/413										R
	Spares for:														
5L/9959118	FILAMENT, miniature	3	-	C	DA9/414										
5CX/5313	LAMPHOLDER, miniature	3	-	C	DA9/415										
	MOUNTING, Suppressor Unit for Demisting Blower Unit (EB8.81.4771)				DA2/416										
	Spares for:														
5CY/4376472	SUPPRESSOR, unit	1	-	L	DA9/417										
	Attachment of suppressor to frame 5														
AS1246/1/2B	Bolt, 4BA	4	-	C	DA9/418										R
	MOUNTING, Terminal Blocks, Control Column (beneath Pilot's Floor) (EB8.81.4355)	-	-	-	DA2/419										
	Spares for:														
5X/5276	BLOCK, terminal, 2-way	4	-	C	DA10/420										
5X/1004088	BLOCK, terminal, 10-way	1	-	C	DA10/421										

Part No.	Description 1 2 3 4 5 6	No. off	Material Specification	Class of Eqpt M.R. or L.M.	Plate
	Attachment of terminal block to pilot's floor structure				
AGS2001/B1	Nut, stiff, 4BA	10	-	C	DA10/422
A32/B32	Screw, 4BA	10	-	C	DA10/423
SP15/B	Washer, 4BA	10	-	C	DA10/424
Texas Inst. 10CV/7046	DIODE	1	-	C	DA10/425
Hendrey D4040	RELAY	1	-	C	DA10/426
EB8.81.5621	UNIT, spark suppression (Mod 3176)	1	-	L	DA10/427
	MOUNTING, Terminal Block, Height Encoding Frame D - Frame C starboard (Mod 4404) (EB8.81.6571)	-	-	-	DA2/428
	Spares for:				
5X/1004088	BLOCK, terminal, 10-way (Mod 4404)	1	-	C	DA10/429
10H/9462765	COVER, clear (Mod 4404)	1	-	C	DA10/430
5X/9450403	PILLAR, fixing (Mod 4404)	2	-	C	DA10/431
	Attachment of terminal block to plate				
AGS2001/B1	Nut, stiff, 4BA (Mod 4404)	2	-	C	DA10/432
SP15/B	Washer, (Mod 4404)	2	-	C	DA10/433
	MOUNTING, Terminal Blocks, Lighting (EB8.81.4827)	-	-	-	DA2/434 R
	Spares for:				
5X/1002694	BLOCK, terminal, 5-way	1	-	C	DA10/435
5X/1004088	BLOCK, terminal, 10-way	2	-	C	DA10/436
	Attachment of terminal block to port console and frame 8				
AGS2001/B1	Nut, stiff, 4BA	6	-	C	DA10/437
A31/B14	Screw, 4BA.	6	-	C	DA10/438
SP10/B	Washer, 4BA.	6	-	C	DA10/439
	MOUNTING, Terminal Block, Navigator's Starboard Console (EB8.81.5143)	-	-	-	DA2/440 R
	Spares for:				
5X/1002695	BLOCK, terminal, 20-way	1	-	C	DA10/441
5X/9149643	COVER, terminal block	1	-	C	DA10/442
5X/9450403	PILLAR, fixing	2	-	C	DA10/443
	MOUNTING, Pilot's Coaming Panel (EB8.81.3039)	-	-	-	DA2/444
	Spares for:				
EA9.81.2603	BRACKET, mounting, dive brake switch	1	-	C	DA11/445

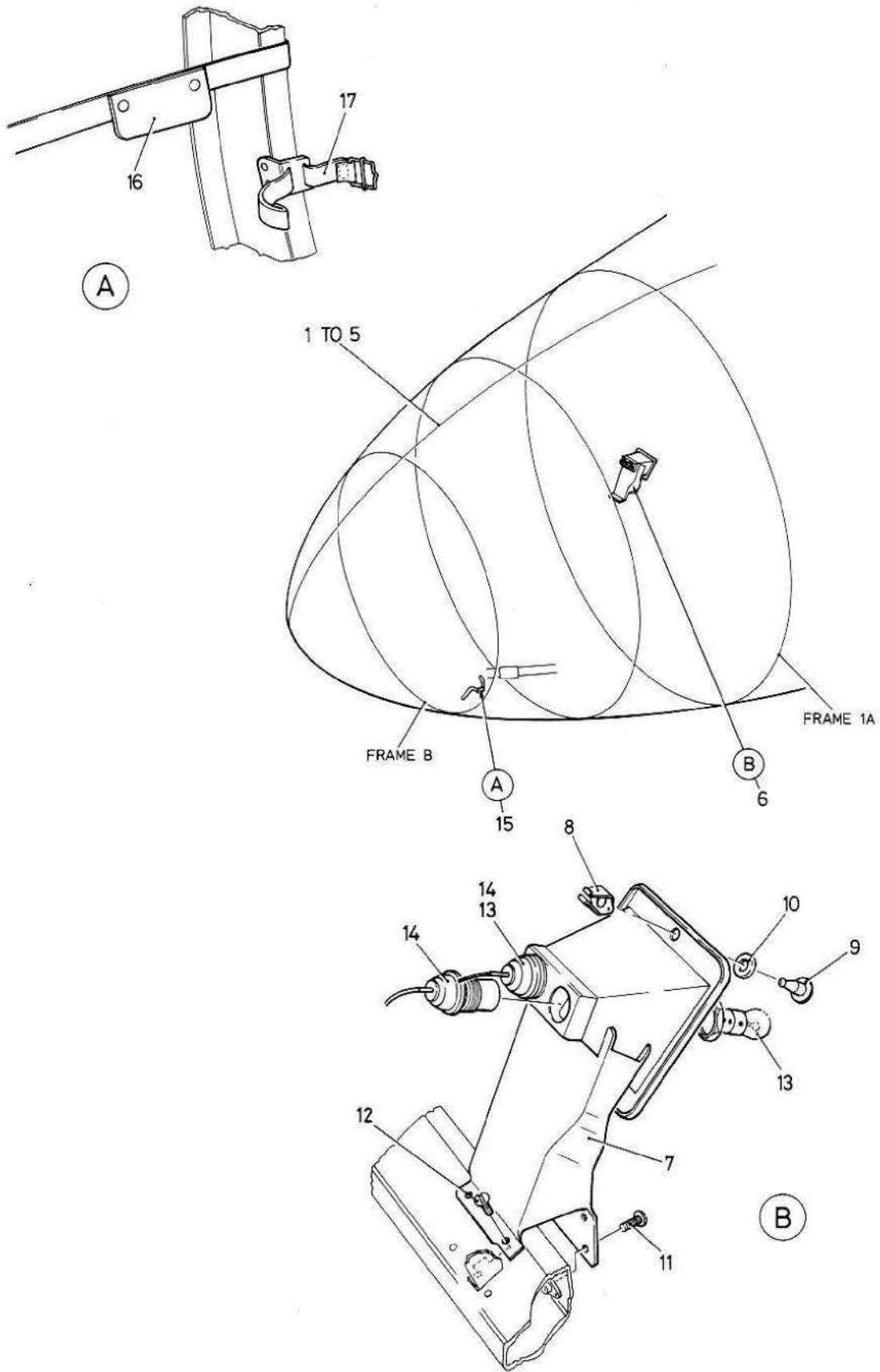
ELECTRICAL INSTALLATION
FORWARD AND NOSE FUSELAGE

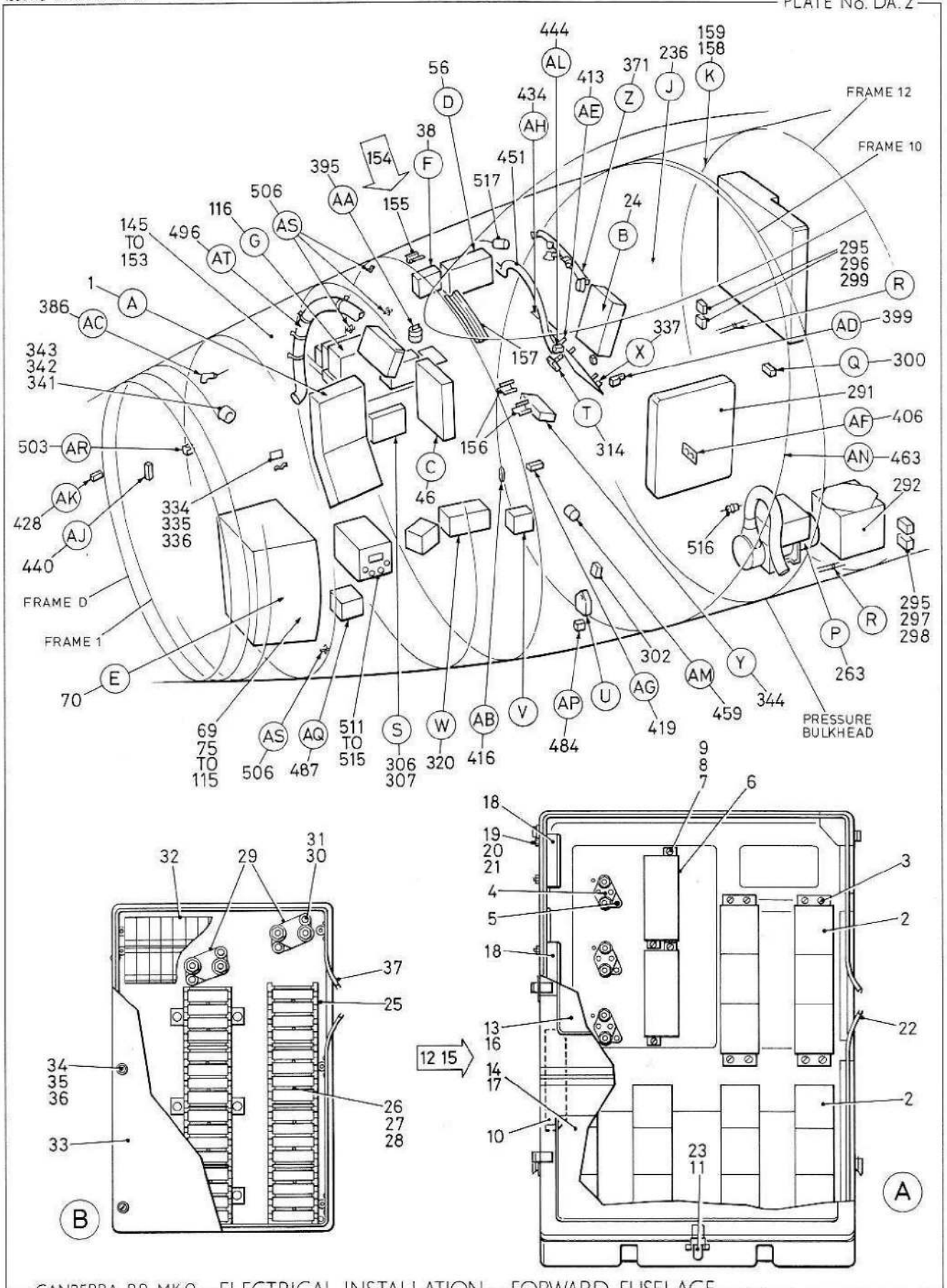
Part No.	Description	No. off	Material Specification	Class of Eqpt M.R. or L.M.	Plate							
						1	2	3	4	5	6	
	Attachment of bracket to structure											
A25/1/2B	Bolt, 4BA.	4	-	C	DA11/446							R
AGS2001/B1	Nut, stiff, 4BA.	4	-	C	DA11/447							
SP15/B	Washer, 4BA.	4	-	C	DA11/448							
5L/9959182	FILAMENT, miniature 28V 0.04 Amp.	1	-	C	DA11/449							
Thorn PPL120	LAMPHOLDER, type A, No. 2, dive brake switch	1	-	C	DA11/450							R
	PANEL, pilot's coaming (EB8.81.3463) (See Section ED)	-	-	-	DA2/451							R
Thorns P781X1	PANEL, "Translite", dive brake switch	1	-	-	DA11/452							
EA9.81.2545	STOP, switch overshoot, group	1	-	C	DA11.453							
Rotax D10001	SWITCH, 3-way, dive brakes	1	-	L	DA11/454							
	Attachment of switch to mounting											
AS1246/1B	Bolt, 4BA.	1	-	C	DA11/455							
A32/B8	Screw, 4BA.	2	-	C	DA11/456							
AGS2035/B	Washer, 4BA. "Shakeproof"	2	-	C	DA11/457							
Thorn 80/10/0098	TERMINAL, earth	1	-	C	DA11/458							R
	MOUNTING, Altitude Switch (EB8.80.3815)				DA2/459							
	Spares for:											
Teddington PAD/A/0/23	SWITCH, altitude	1	-	P	DA11/460							
	Attachment of switch to structure under pilots floor											
A26/3C	Bolt, 2BA.	2	-	C	DA11/461							
SP10/C	Washer, 2BA.	2	-	C	DA11/462							
	PLUG SOCKETS, Through Pressure Bulkhead (EB8.81.4347)	-	-	-	DA2/463							R
	Spares for:											
10H/9560042	ADAPTOR, bulkhead Plug	2	-	L	DA11/464							
6027-16-23SR	CONNECTOR (Mod 5731)	1	-	C	DA11/465							
Hellerman HV4652	HOUSING, pressure bung	1	-	L	DA11/466							
	Attachment of housing to pressure bulkhead											
A31/B6	Screw, 4BA	8	-	C	DA11/467							
AGS2001/B1	Nut, stiff, 4BA	8	-	C	DA11/468							
SP10/B	Washer, 4BA	8	-	C	DA11/469							
10H/19445	PLUG/SOCKET, type 11	2	-	L	DA11/470							
10H/19451	PLUG/SOCKET, type 17	1	-	C	DA11/471							
10H/19457	PLUG/SOCKET, type 23	2	-	C	DA11/472							
10H/19475	PLUG/SOCKET, type 41	3	-	C	DA11/473							
10H/19481	PLUG/SOCKET, type 47	6	-	L	DA11/474							
10H/19482	PLUG/SOCKET, type 48	4	-	L	DA11/475							
10H/19483	PLUG/SOCKET, type 49 (Pre Mod 5131)	2	-	L	DA11/476							

Part No.	Description	No. off	Material Specification	Class of Eqpt M.R. or L.M.	Plate
10H/19484	PLUG/SOCKET, type 50	2	-	L	DA11/477
10H/19487	PLUG/SOCKET, type 53	1	-	L	DA11/478
10H/19488	PLUG/SOCKET, type 54	1	-	C	DA11/479
10H/19489	PLUG/SOCKET, type 55	1	-	C	DA11/480
10H/19490	PLUG/SOCKET, type 56	1	-	C	DA11/481
10H/19496	PLUG/SOCKET, type 62	1	-	C	DA11/482
10H/19610	PLUG/SOCKET	4	-	L	DA11/483
	RESISTANCE, High Intensity Lamp Mounting (EB8.81.4795)	-	-	-	DA2/484
	Spares for:				
5CZ/4335750	RESISTOR UNIT, 30 Ohms, 30 watts	1	-	L	DA12/485
	Attachment of resistor unit to structure				
A25/4C	Bolt, 2BA	2	-	C	DA12/486
	SELECTOR, Ratio Assembly (EB8.81.2157)	1	-	-	DA2/487
	Spares for:				
T.C.C.	CONDENSER	1	-	C	DA12/488
CP.47S	COVER, assembly	1	-	C	DA12/489
EB8.81.2163	PANEL, front	1	L72	C	DA12/490
EB8.81.2159	PANEL, base	1	-	C	DA12/491
EB8.81.2161	PLUG, fixed	1	-	L	DA12/492
CZ49061	RESISTOR, fixed type RWV5-J	1	-	C	DA12/493
10W/0117905	SWITCH, magnetic relay, type S5	1	-	L	DA12/494
5CW/5529	SWITCH, unit, "Ledex"	1	-	L	DA12/495
N.S.F.	SUPPORT, Cables, Installation, in area of Frame 5 (Mod 5166) (EB8.81.6799)	-	-	-	DA2/496
LX/S/11488/DM7	Spares for:				
A25/3C	BOLT, 2BA (Mod 5166)	4	-	C	DA12/497
EB8.81.6799A	BRACKET, strap (Mod 5166)	1	-	C	DA12/498
AGS2002/C1	NUT, stiff, 2BA (Mod 5166)	4	-	C	DA12/499
EEAS132/18	STRAP, clamp (Mod 5166)	AR	-	C	DA12/500
Hellerman	STRAP, "Helvin" (Mod 5166)	AR	-	C	DA12/501
HY3341	STUD, "Helvin" (Mod 5166)	AR	-	C	DA12/502
Hellerman	SWITCH, Dump Valve (Mod 3720)	1	-	-	DA2/503
NY3342	Spares for:				
EB8.81.6047	SWITCH, Lock	1	-	C	DA12/504
EB8.80.4087	FLAP, guard	1	L59	C	DA12/505
EB8.81.1853	TERMINAL, Earth Assembly	4	-	C	DA2/506

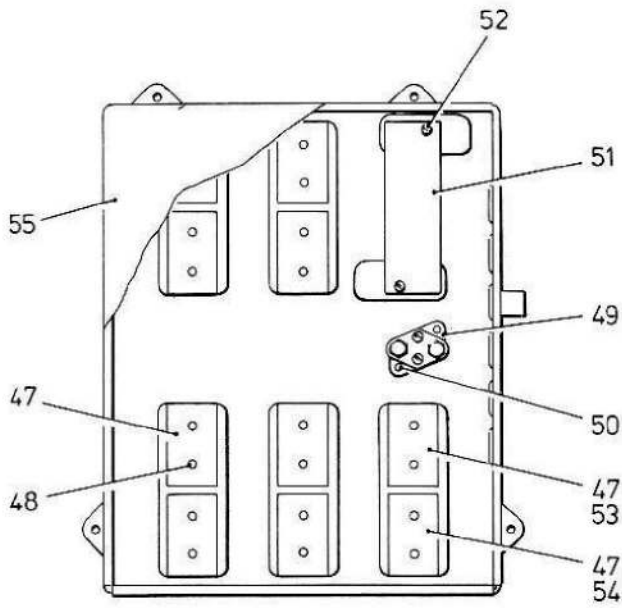
ELECTRICAL INSTALLATION
FORWARD AND NOSE FUSELAGE

Part No.	Description	No. off	Material Specification	Class of Eqpt M.R. or L.M.	Plate								
						1	2	3	4	5	6		
	Spares for:												
AGS2001/C3 EB8.81.1855 EB8.81.2177 EB8.81.1857	NUT, 2BA STUD, terminal WASHER WASHER	8 4 8 4	L65 L72 L72	C C C C	DA12/507 DA12/508 DA12/509 DA12/510								
	ROLL DAMPER Installation (Mod 3359) (EB8.81.5751)	-	-	-	DA2/511								
	Spares for:												
600/2EAP 6TB/1705	DETECTOR AND AMPLIFIER UNIT MOUNTING, detector and amplifier	1 1	- -	P P	DA2/512 DA2/513								
	Attachment of mounting to structure												
A25/9C 605/1EAP 10H/19494 6TB/1708	Bolt, 2BA PAD, gearing type F PLUG/SOCKET, type 60 SWITCH unit, pilots	4 1 1 1	- - - -	C P L P	DA2/514 DA2/515 DA2/516 DA2/517								
	PANEL, Relay, Installation (EB8.84.1059)	-	-	-	DA13/1							R	
	Spares For:												
Hendrey D4600 Hendrey D5900	RELAY RELAY	1 1	- -	C C	DA13/2 DA13/3							R	R
	Attachment of relays to mounting plate												
A25/7B AGS2001/B1 SP13/B EB8.84.1059/B EB8.84.1059/A	Bolt, 4BA Nut, 4BA Washer, 4BA MEMBER, Z (Make from 30B/9611218) PLATE, mounting (Make from 30B/9611216)	6 6 6 2 1	- - - L72 L72	C C C C C	DA13/4 DA13/5 DA13/6 DA13/7 DA13/8							R	R
	Attachment of mounting plate to structure												
AS1248/2C SP13/C AGS2007/C1 EB8.84.1059/C EB8.84.1059/D	Bolt, 2BA Washer, 2BA Nut, Anchor, 2BA Packing (Make from 30B/9611213) Packing (Make from 30B/9611213)	3 3 3 3 3	- - - L72 L72	C C C C C	DA13/9 DA13/10 DA13/11 DA13/12 DA13/13							R	R
	MOUNTING, Pressure Bung (EB8.84.1141)	-	-	-	DA13/14							R	
	Spares For:												
EB8.84.1141/A Hellermann CD30330KC	DOUBLER (Make from 30B/9611243) HOUSING, pressure bung	1 1	L73 -	C L	DA13/15 DA13/16							R	R
	Attachment of housing to pressure bulkhead												
A25/2B AGS2001/B1 SP15/B	Bolt, 4BA Nut, 4BA Washer, 4BA	8 8 8	- - -	C C C	DA13/17 DA13/18 DA13/19							R	R

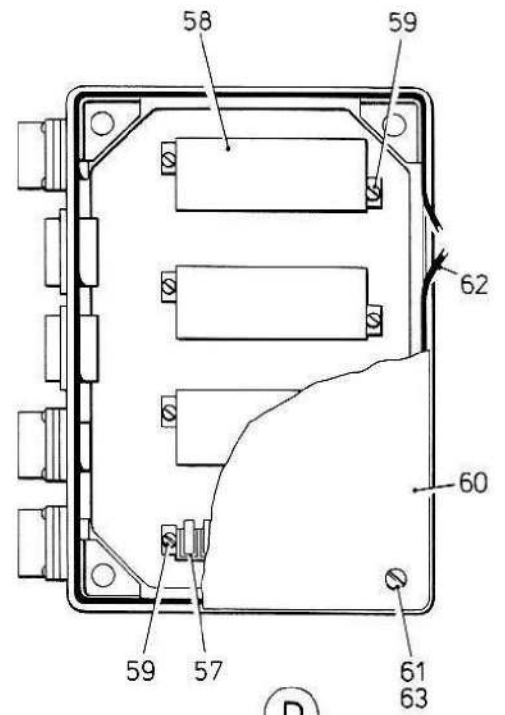




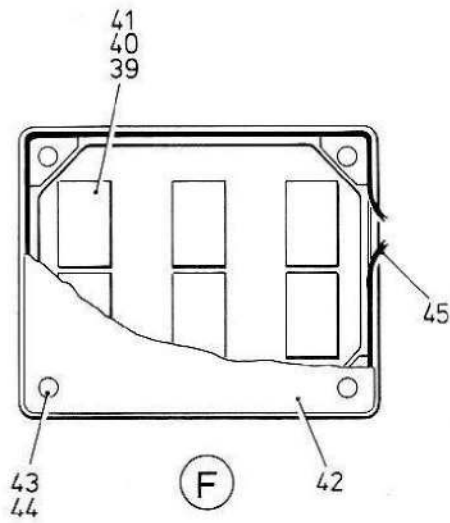
CANBERRA P.R. MK.9 — ELECTRICAL INSTALLATION — FORWARD FUSELAGE



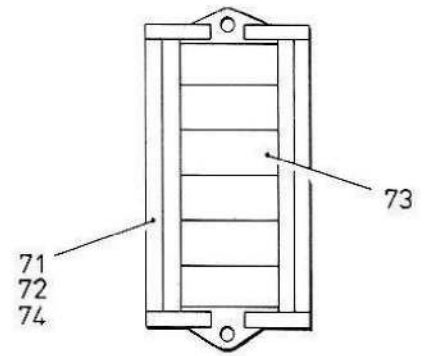
C



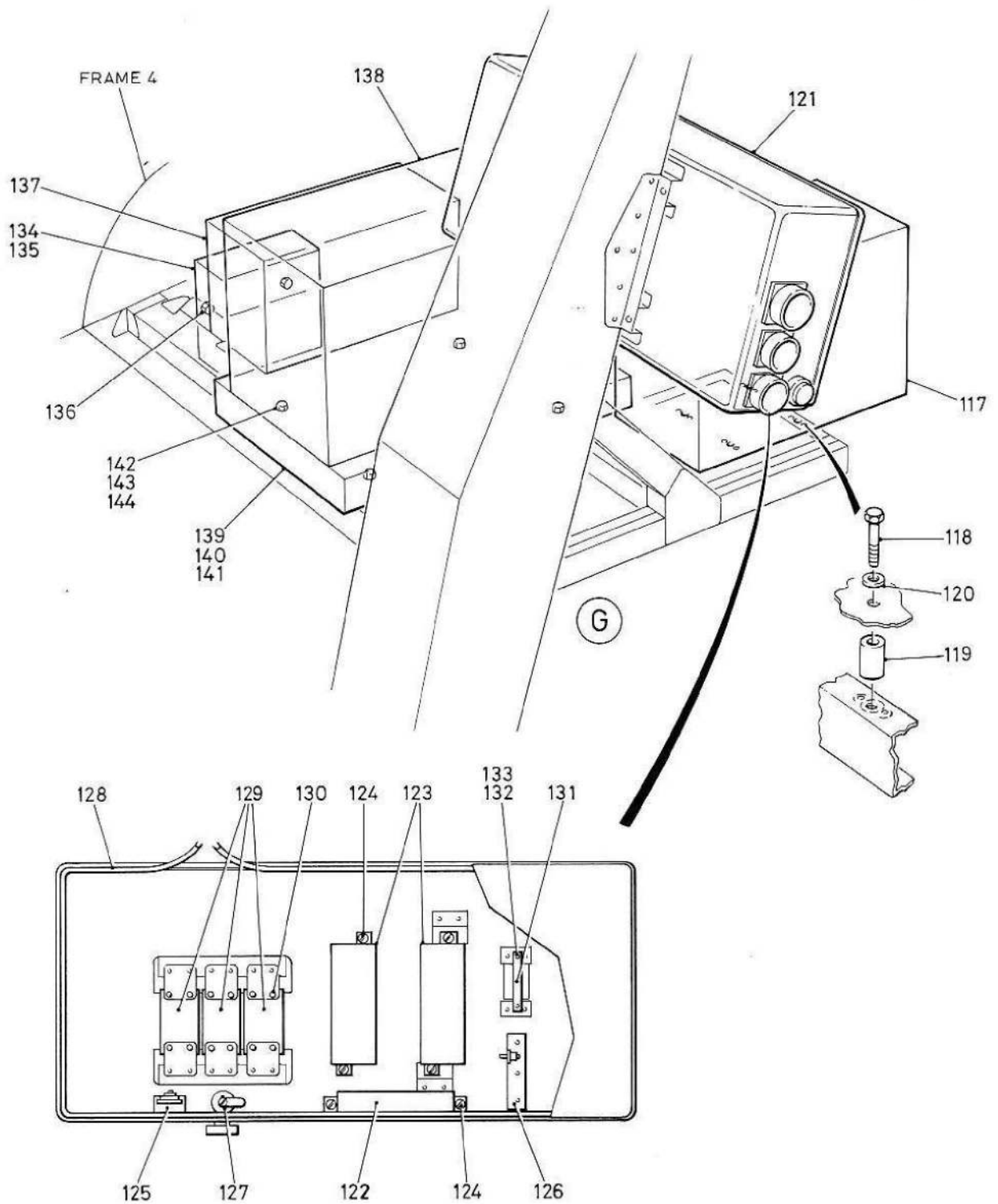
D

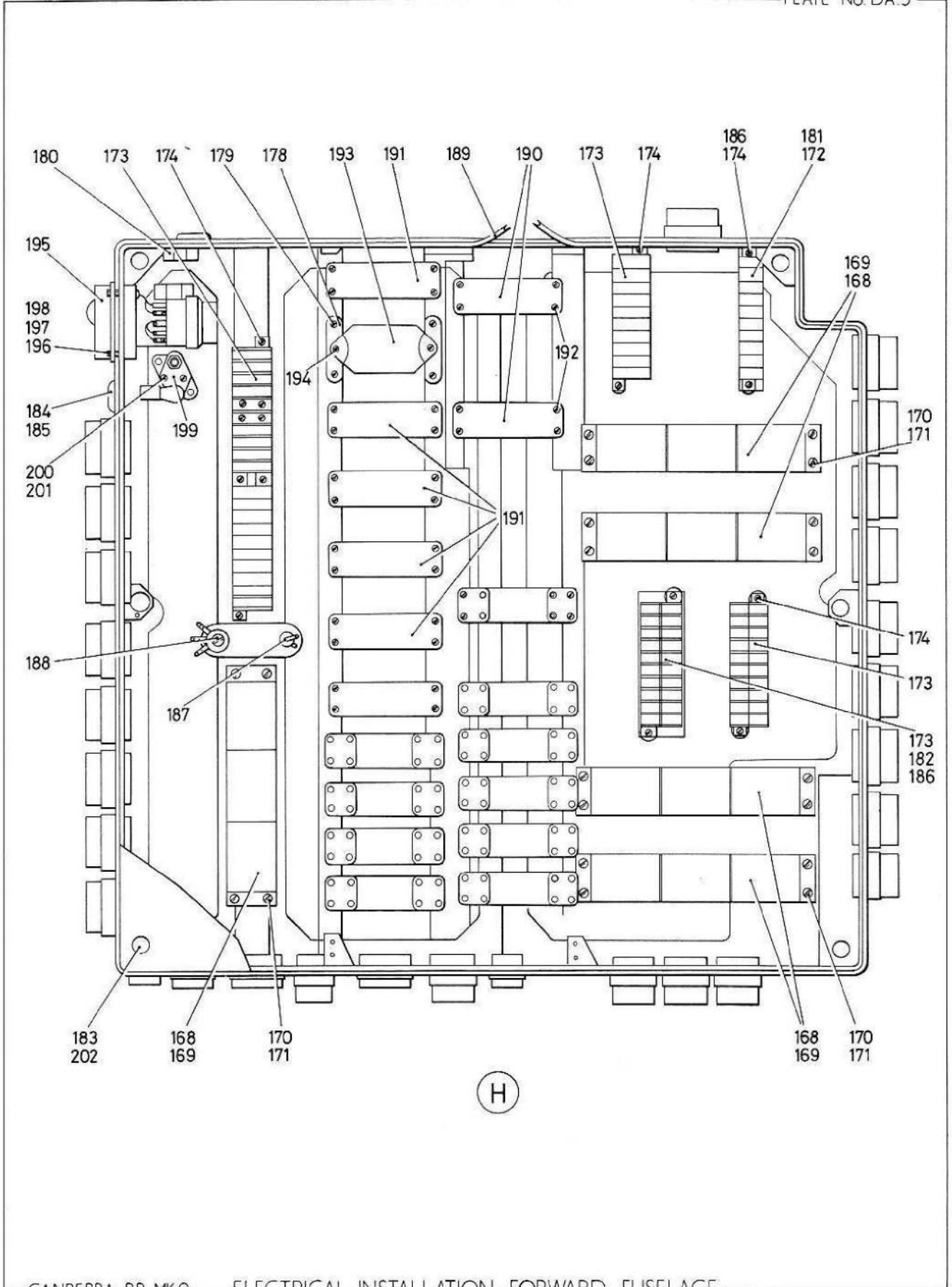


F

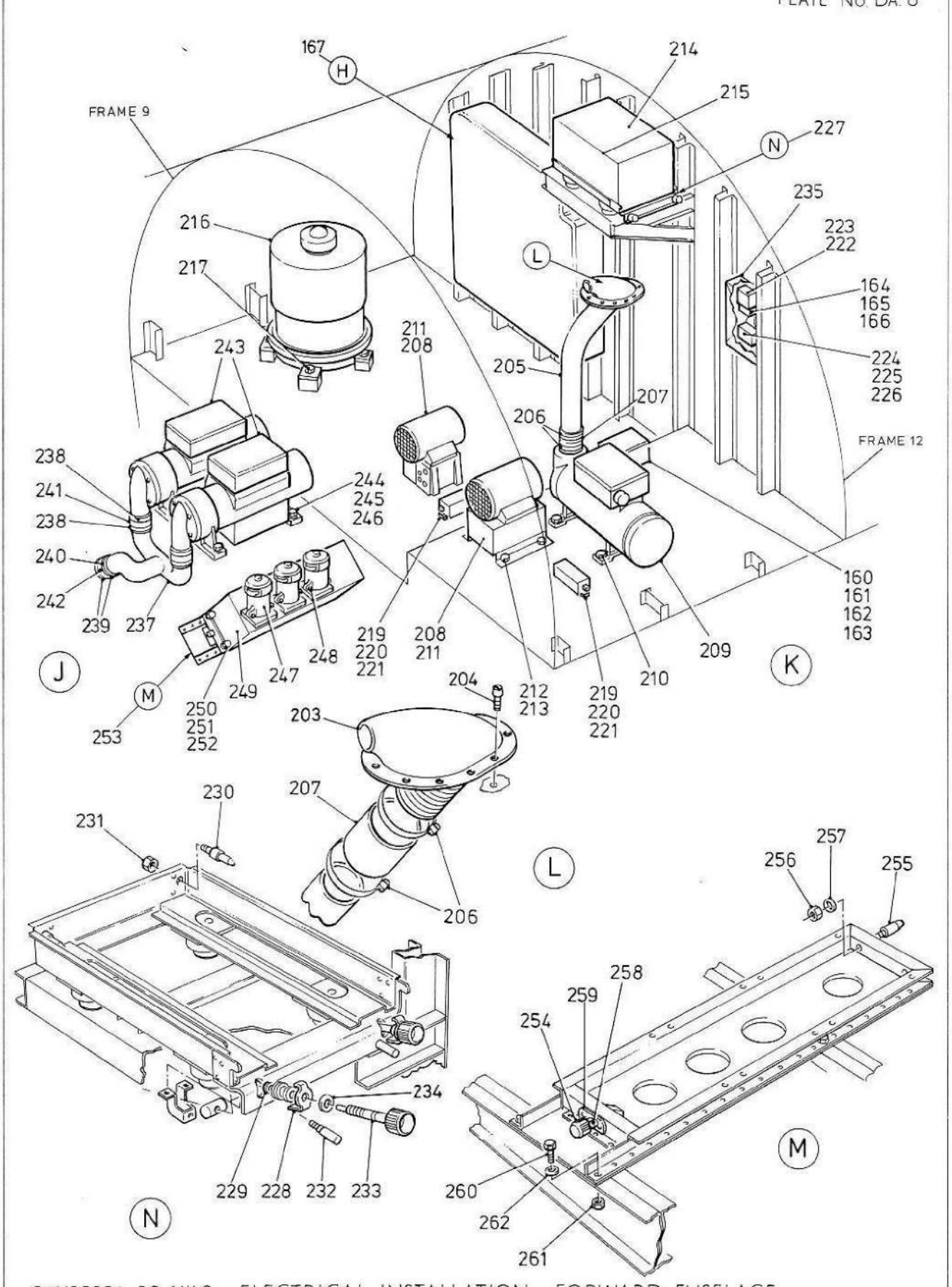


E

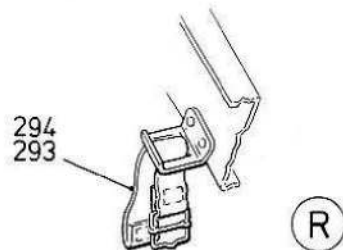
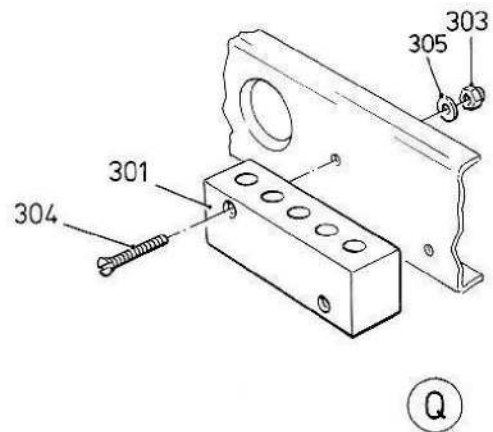
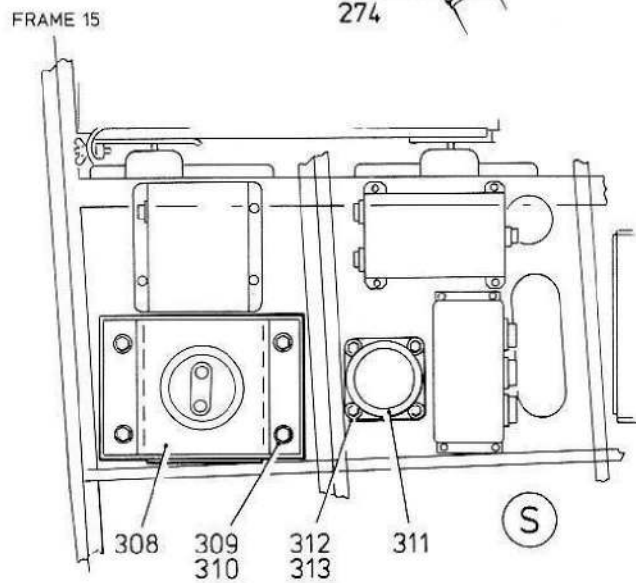
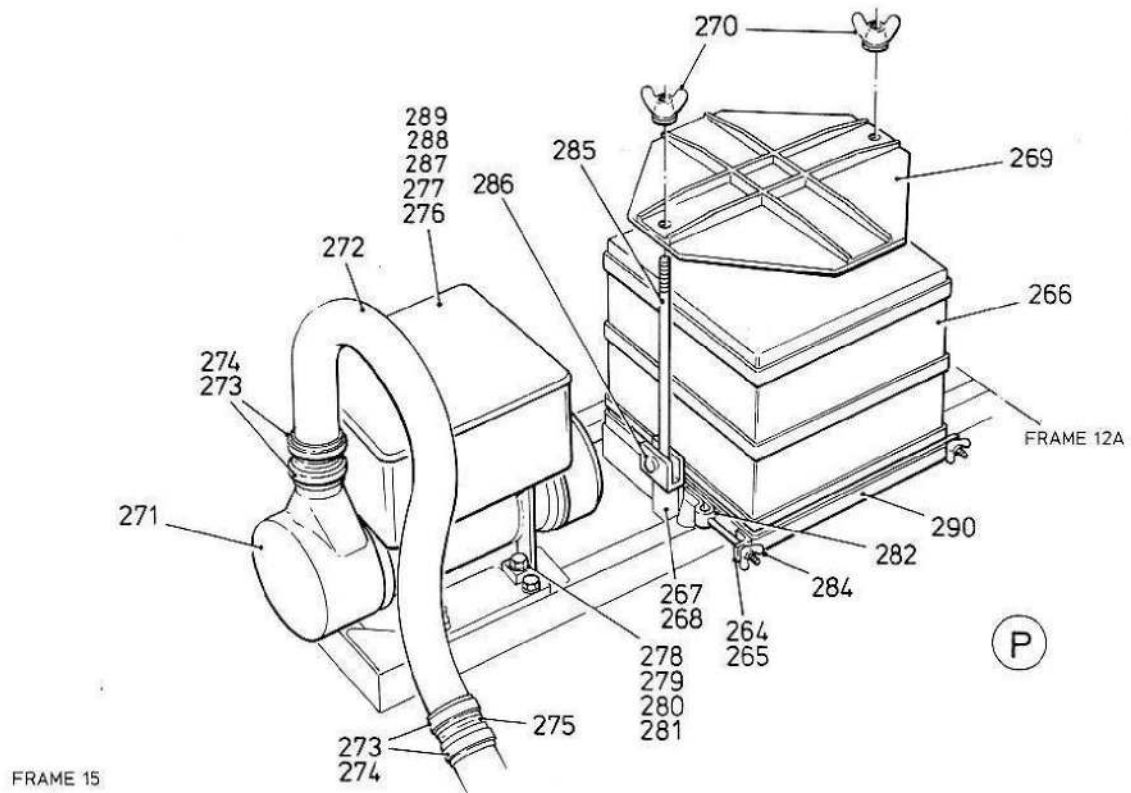


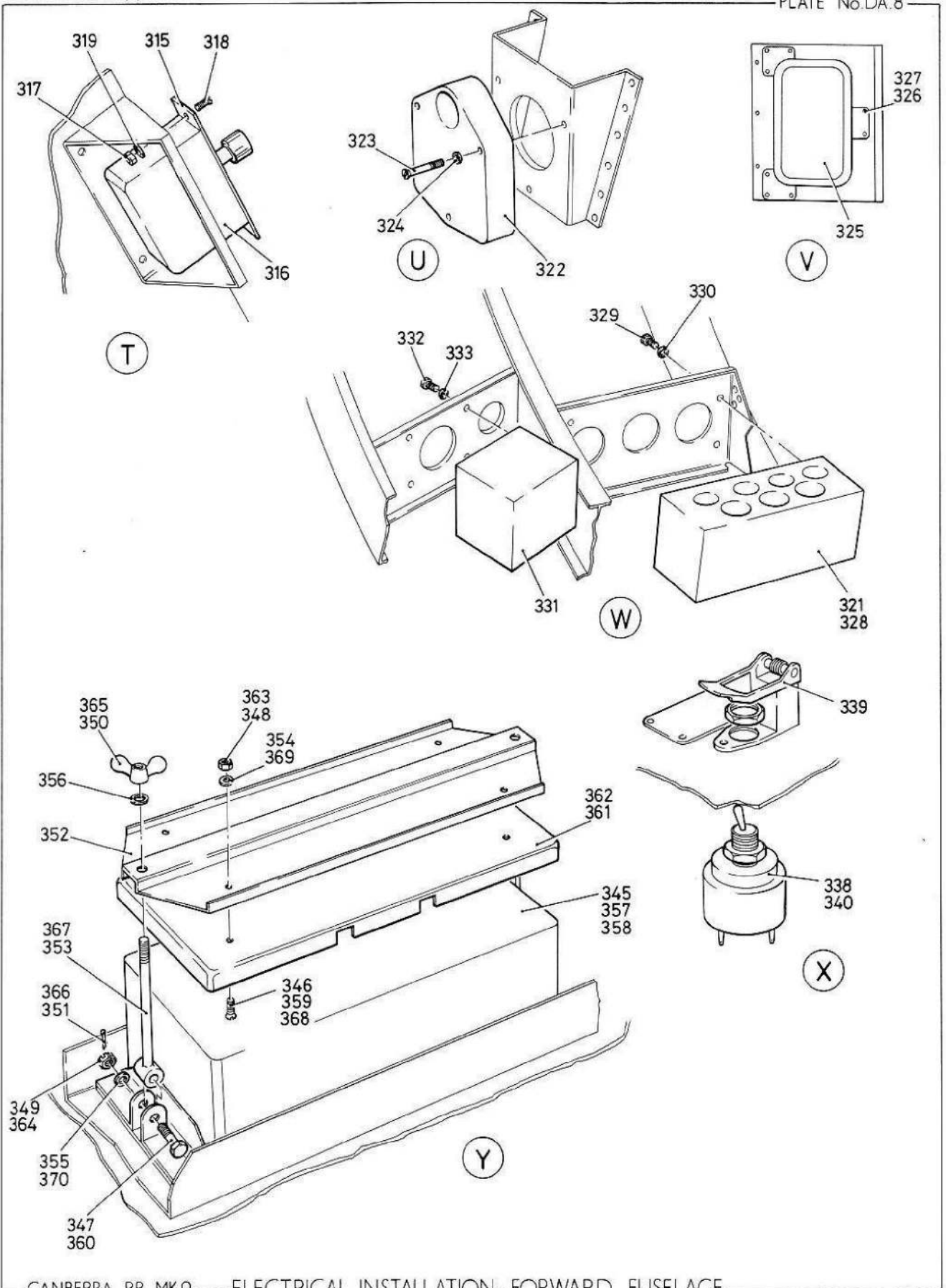


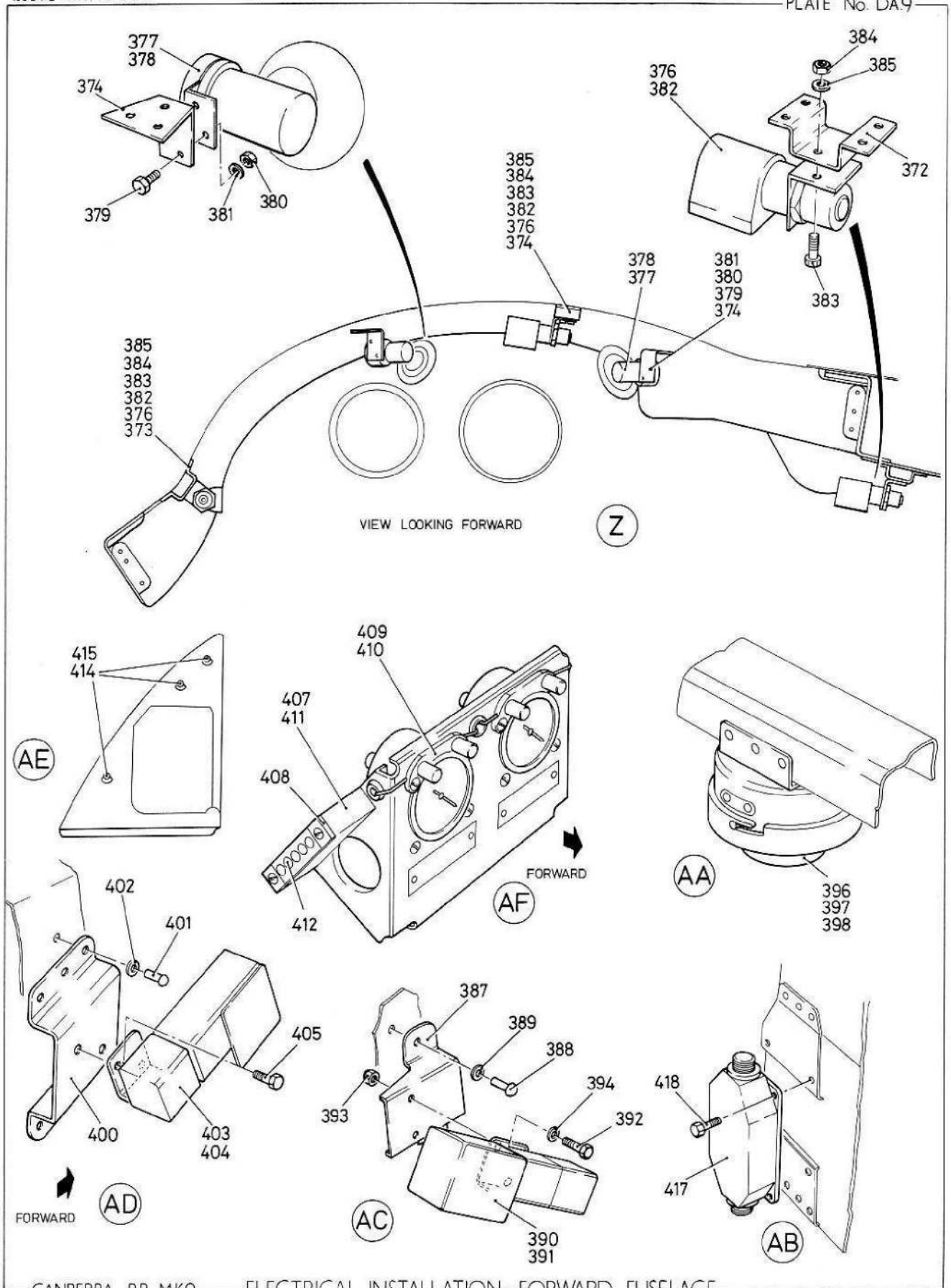
CANBERRA PR. MK.9—ELECTRICAL INSTALLATION—FORWARD FUSELAGE

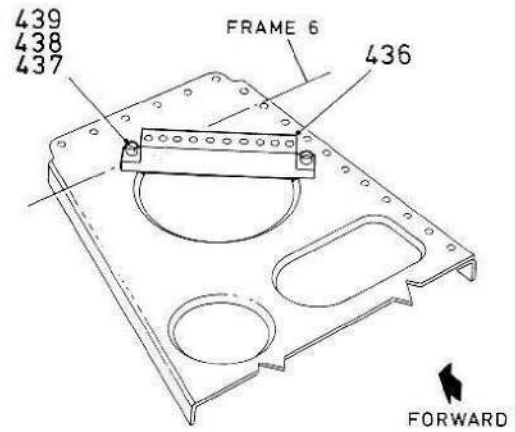
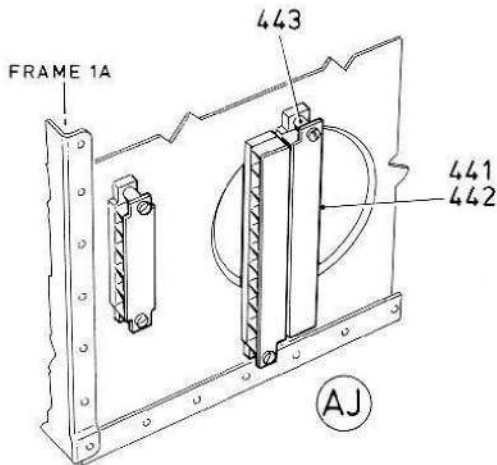
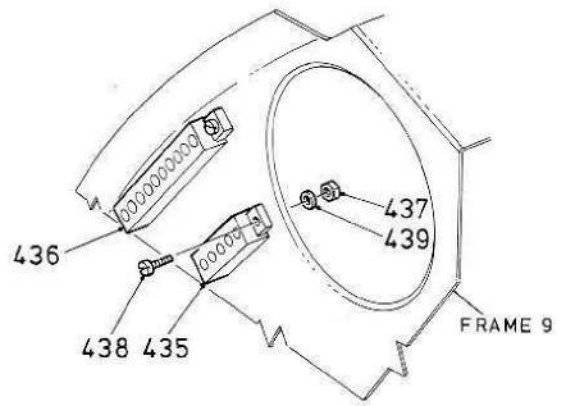
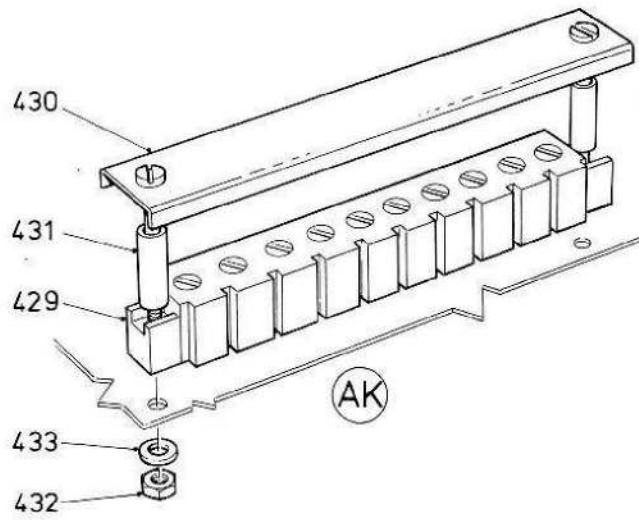
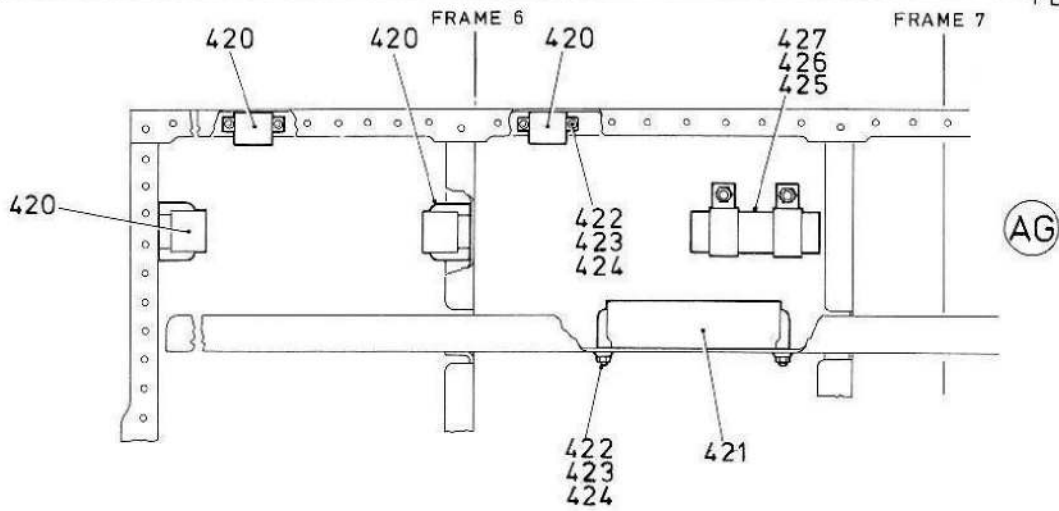


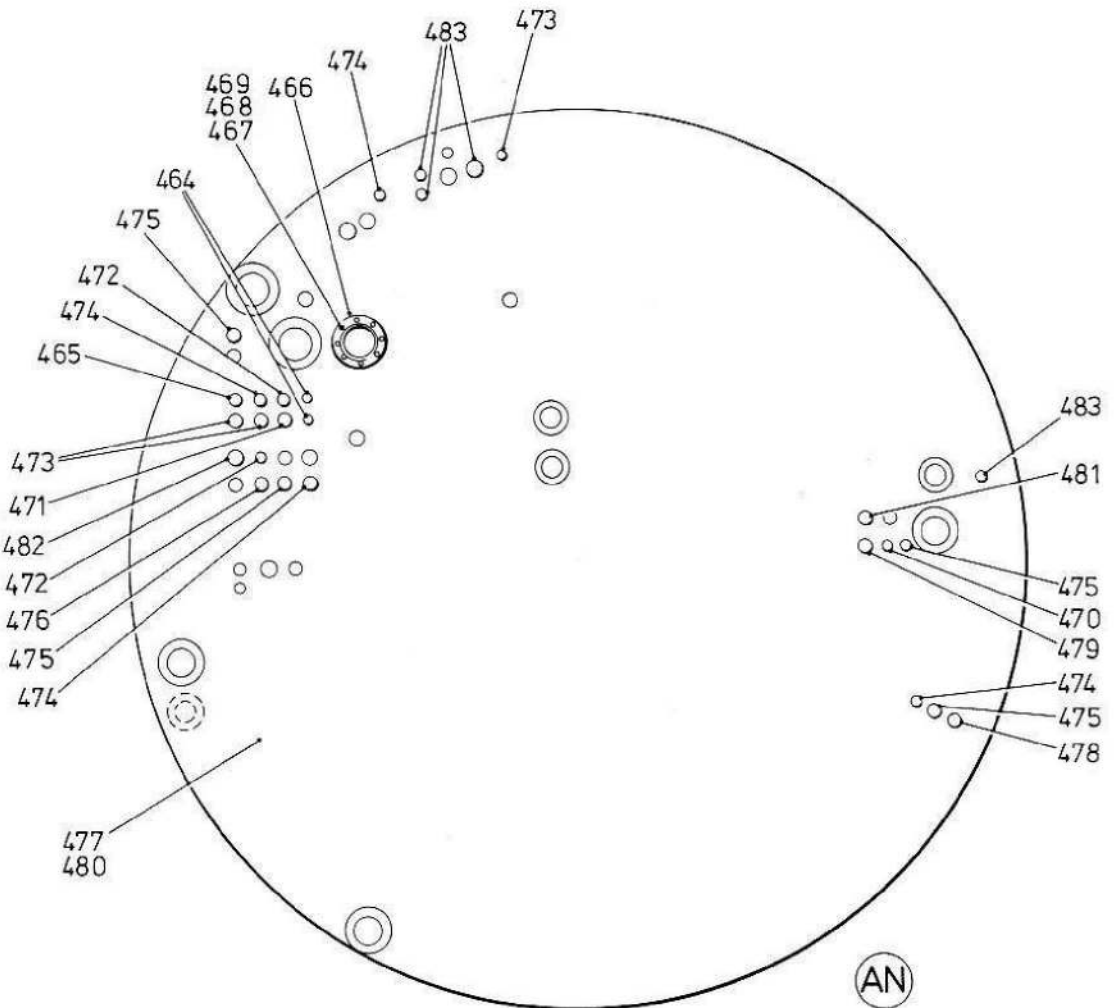
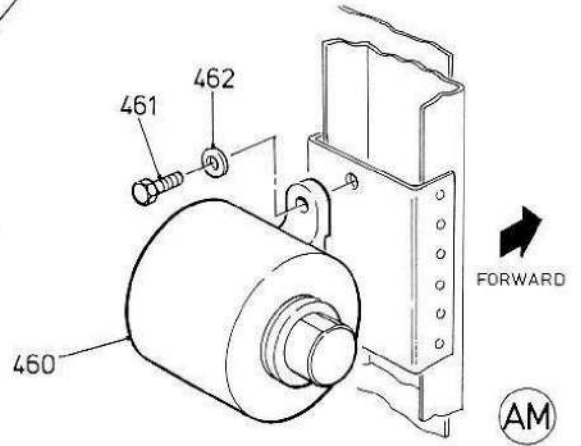
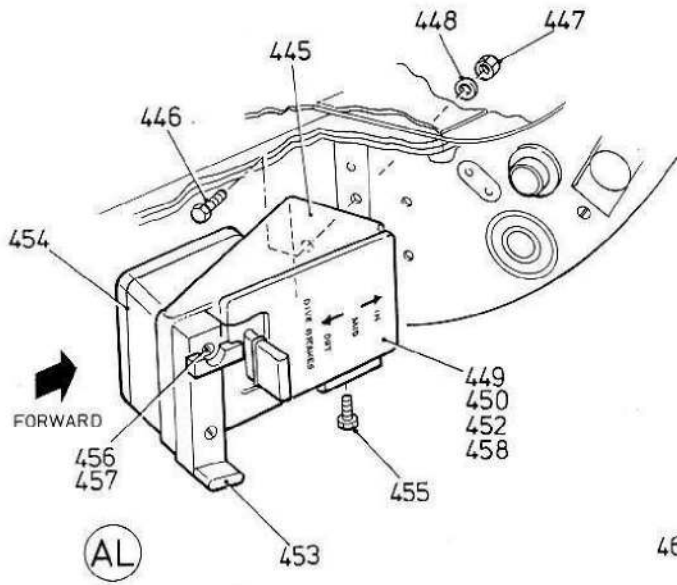
CANBERRA P.R. MK.9—ELECTRICAL INSTALLATION—FORWARD FUSELAGE

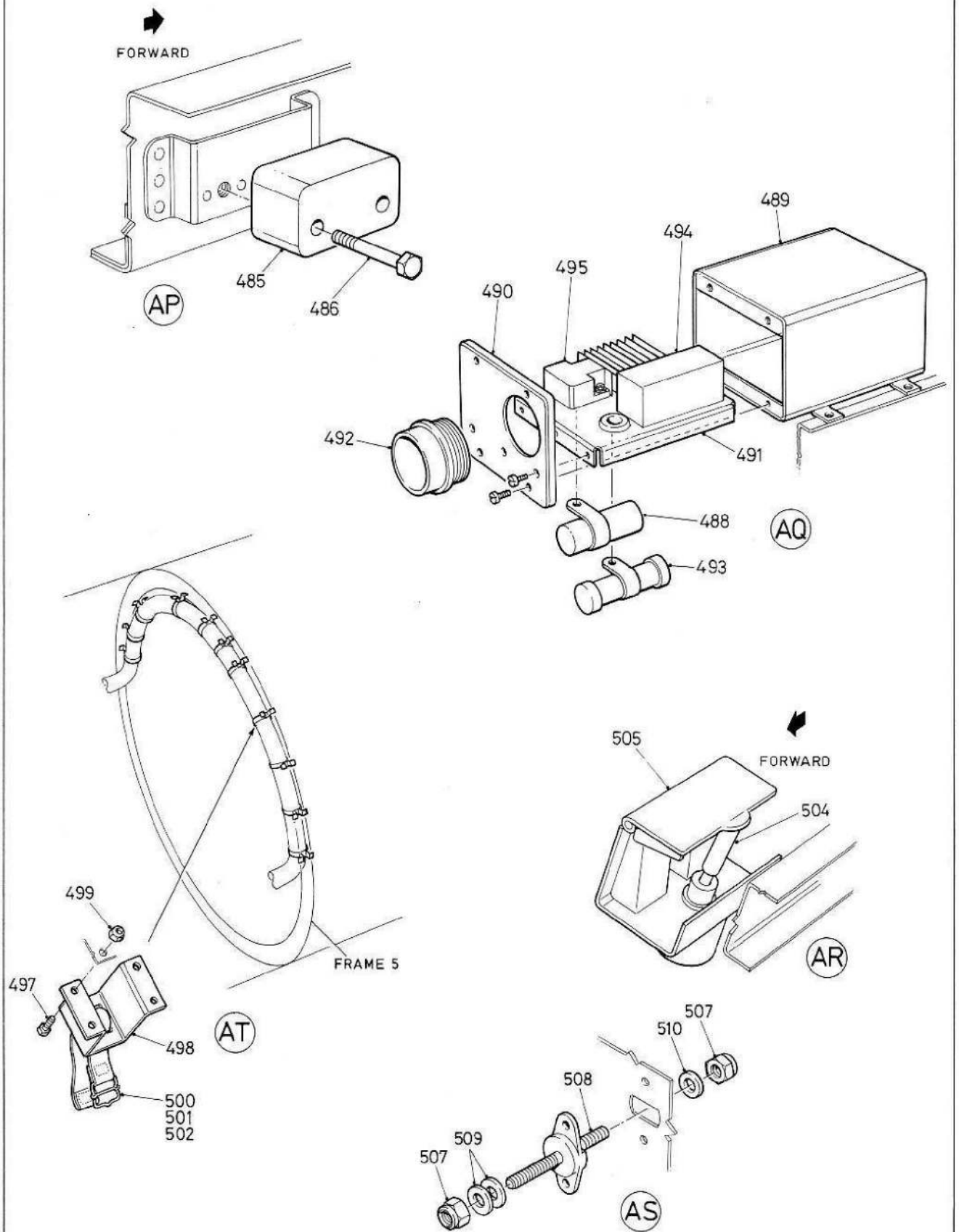


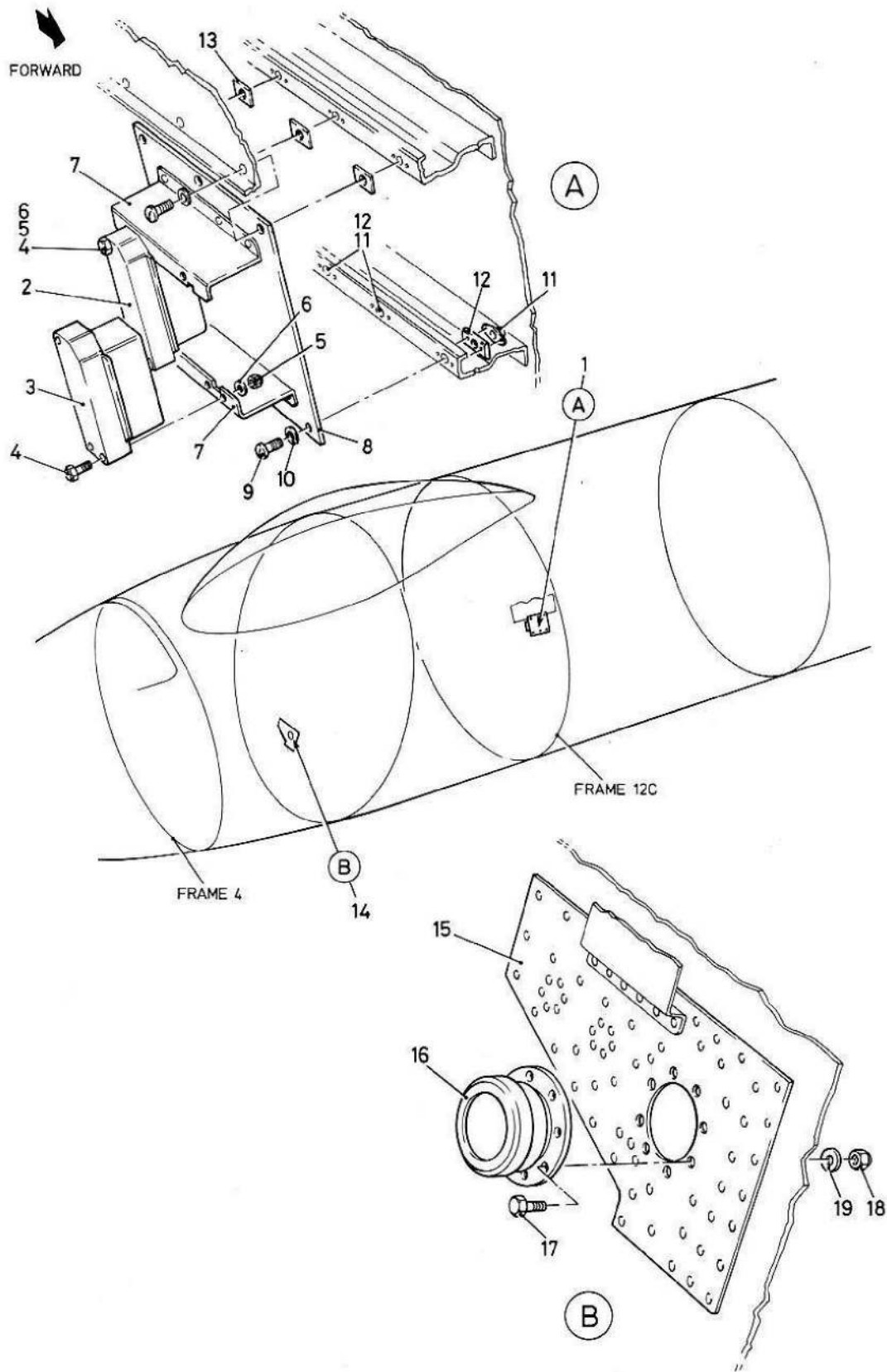












CANBERRA PR. MK.9—ELECTRICAL INSTALLATION—FORWARD FUSELAGE

This file was downloaded
from the RTFM Library.

Link: www.scottbouch.com/rtfm

Please see site for usage terms,
and more aircraft documents.

