

ELECTRICAL INSTALLATION  
REAR FUSELAGE

Part No.	Description	No. off	Material Specification	Class of Eqpt M.R. or L.M.	Plate						
						1	2	3	4	5	6
	ELECTRICAL INSTALLATION IN REAR FUSELAGE (EB8.81.1011)	-	-	-							
	Spares for:										
English Electric AE4024 Mk.2	ACTUATOR, tailplane (With Mod EE5/247 embodied)	1	-	P	DC1/1						R
EB8.81.1011/A 5CZ/430	ANGLE (Mod 5287) (Make from 30B/9611216)	1	L72 16 swg	LM	DC2/2						
	BLOCK, terminal, 2-way	1	-	C	DC2/3						
	Attachment of block to structure										
A33/A20	Screw, 6BA	2	-	C	DC2/4						
	BOX, Distribution No 5 and Mounting (EB8.81.3345)	-	-	-							R
	Spares for:										
5X/1002695 CZ50205	BLOCK, terminal	3	-	C	DC1/5						
	BLOCK, terminal 2-way	1	-	C	DC1/6						
	Attachment of terminal block to box		-								
A31/B28 EB8.81.3349	Screw, 4BA	8	-	C	DC1/7						
	COVER, Box, Group	1	-	L	DC1/8						
	Spares for:										
Silentbloc Ltd 30151	CUSHION, "Vibrex" 1/16 in. thick	4	-	C	DC1/9						
Silentbloc Ltd V2/0602	FASTENER, "Vibrex"	4	-	C	DC1/10						
5CW/5529	RELAY, type S5	4	-	L	DC1/11						R
	Attachment of relay to box										
A27/BP	Nut, 4BA	4	-	C	DC1/12						
	SEAL (Make from Ref. 30135)	AR	-	LM	DC1/13						R
EEAS/142	TERMINAL, earth	1	-	C	DC2/14						
	Attachment of distribution box to structure										
A25/2B	Bolt, 4BA	4	-	C	DC1/15						
SP10/B	Washer, 4BA	4	-	C	DC1/16						
EB8.81.1875	BOX, Junction, Assembly (Pre Mod 5478J)	-	-	-	DC1/17						
EB8.81.1875x13	BOX, Junction, Assembly (Mod 5478J)	-	-	-	DC1/18						
	Satisfied by CM/CAN/0260/NEAF)										
	Spares for:										
EB8.81.1877	COVER, junction box	1	-	C	DC1/19						
EB8.81.5219	COVER, terminal box	1	-	C	DC1/20						

ELECTRICAL INSTALLATION  
REAR FUSELAGE

Canberra P R Mk 9

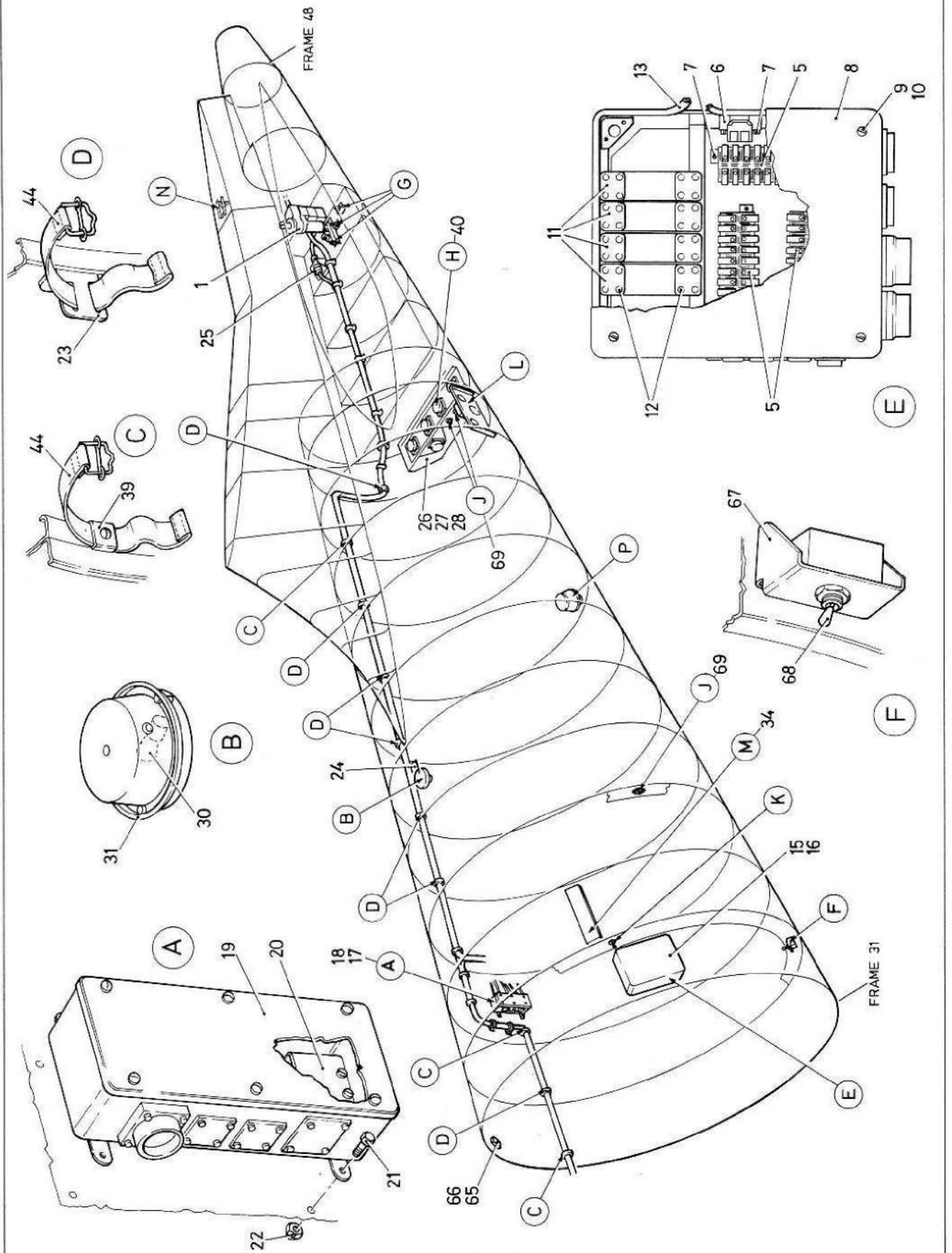
Part No.	Description	No. off	Material Specification	Class of Eqpt M.R. or L.M.	Plate
	Attachment of box to structure				
A25/1C	Bolt, 2BA	4	-	C	DC1/21
AGS2001/C1	Nut, 2BA	4	-	C	DC1/22
EA1.81.252	BRACKET, cable strap	10	-	C	DC1/23
EA2.81.767	BRACKET, mounting	1	-	C	DC1/24
EA1.81.367	BRACKET, mounting	1	-	C	DC1/25
EB8.81.5307	COVER, magnetic relay, forward of frame 42	1	DTD797A	C	DC1/26
	Attachment of cover to structure				
AS1248/1B	Bolt, 4BA	9	-	C	DC1/27
SP15/B	Washer, 4BA	9	-	C	DC1/28
5L/9952604	FILAMENT, 24V, 30W	1	-	C	DC2/29
5L/9953271	FILAMENT, 28V, 7W	1	-	C	DC1/30
5CX/446	LAMP, cockpit, Mk 1A	1	-	L	DC1/31
5CX/4521	LAMP, front clear	1	-	L	DC2/32
5CX/557	LAMP, downward ident	1	-	L	DC2/33
EB8.81.6813	PANEL, Relay Mounting, Assy (Mod 5289 Satisfied by CM/CAN/0491/STC)	1	-	-	DC1/34
	Spares for:				
5X/2683	BLOCK, terminal (Mod 5289)	1	-	C	DC2/35
14A/1935161	CONTROL, IMC (Mod 5289)	1	-	L	DC2/36
5CW/6851	RELAY, type D3985 (Mod 5289)	1	-	L	DC2/37
5CW/6452	RELAY, type D2362 (Mod 5289)	1	-	L	DC2/38
EEAS73	PLATE, clamp	1	-	C	DC1/39
	RELAY, Type 31A and Mounting (EB8.81.3043 and 3044)	-	-	-	DC1/40
	Spares for:				
Thorn Electric Type 31A	RELAY, magnetic	6	-	L	DC2/41
	Attachment of relay to structure				
A25/6B	Bolt, 4BA	24	-	C	DC2/42
SP13/B	Washer, 4BA	24	-	C	DC2/43
EEAS132/7	STRAP, cable	13	-	C	DC1/44
EB7.81.329	STUD, earth (Pre Mod 5287)	1	-	C	DC2/45
EB7.81.329	STUD, earth (Mod 5287)	3	-	C	DC2/46
	Attachment of stud to lug				
AGS2001/E1	Nut, 1/4 in. BSF	AR	-	C	DC2/47
EEAS28/10DPH	Washer	AR	-	C	DC2/48
SP47/E	Washer, spring 1/4 in. BSF	AR	-	C	DC2/49
	SUPPRESSOR And Slave Relay Unit (Auto-Stabiliser) Mounting (EB8.81.4705)	-	-	-	-

R  
R

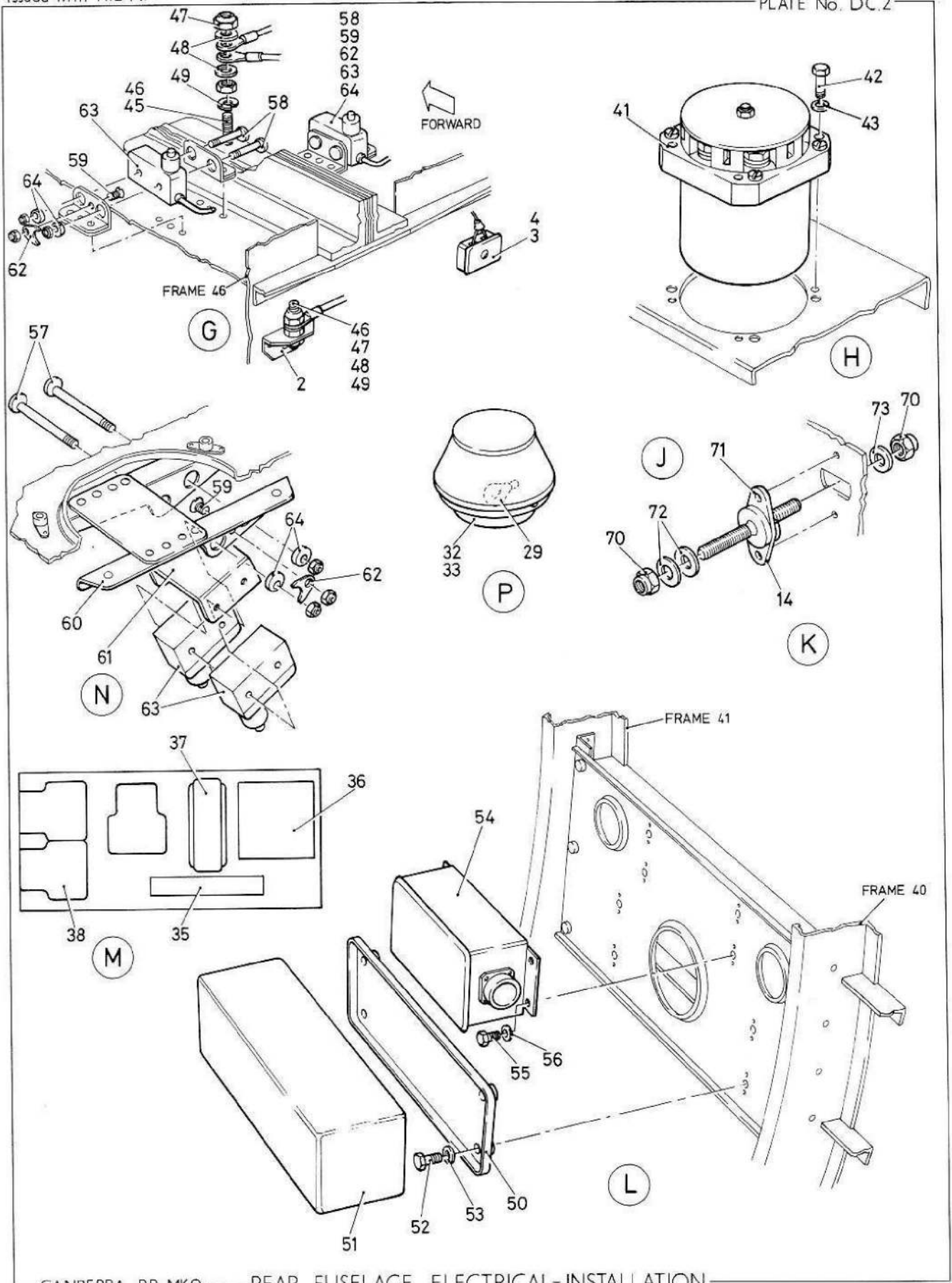
R

ELECTRICAL INSTALLATION  
REAR FUSELAGE

Part No.	Description	No. off	Material Specification	Class of Eqpt M.R. or L.M.	Plate										
						1	2	3	4	5	6				
	Spares for:														
6S/42	MOUNTING, slave relay	1	-	L	DC2/50										
6S/33	RELAY, slave unit type A	1	-	P	DC2/51										
	Attachment of mounting and slave relay unit														
A25/2C	Bolt, 2BA	4	-	C	DC2/52										
SP15/C	Washer, 2BA	4	-	C	DC2/53										
5CY/5151	SUPPRESSOR unit, type G5	1	-	L	DC2/54										
	Attachment of suppressor to plate														
A25/2B	Bolt, 4BA	4	-	C	DC2/55										
SP15/B	Washer, 4BA	4	-	C	DC2/56										
	SWITCH, Limit (Tail Plane) and Mounting (EB8.81.6507)	-	-	-	-										R
EB7.81.1093	BOLT, eccentric	2	-	C	DC2/57										
EB7.81.1399	BOLT, eccentric	4	-	C	DC2/58										
EB7.81.1099	BOLT, locking	3	-	C	DC2/59										
EB8.12.1285	BRACKET assy, micro switch	1	-	LM	DC2/60										
EB8.81.6501	CRADLE, assembly	1	-	LM	DC2/61										
EB7.81.1097	PLATE, locking	3	-	C	DC2/62										
Dowty															
DN1322Z Mk.2	SWITCH, micro	4	-	L	DC2/63										R
OR Dowty															
DN1322Z Mk.3	SWITCH, micro	4	-	L	DC2/63										R
EB7.81.1095	WASHER, eccentric	6	-	C	DC2/64										
5CW/6851	SWITCH, magnetic, type 10B, No. 13, Frame 31B	1	-	L	DC1/65										
	Attachment of switch to mounting														
A31/B32	Screw, 4BA	4	-	C	DC1/66										
	SWITCH, Flood Lamp Installation (Mod 5000 ALT/SB/9/009) (EB8.81.3879x3a)	-	-	-	-										
	Spares for:														
Dowty															
AS10512M/1	SHROUD (ALT/SB/9/009)	1	-	C	DC1/67										
Dowty															
AS10512A-2	SWITCH (ALT/SB/9/009)	1	-	C	DC1/68										R
EB8.81.1853	TERMINAL, Earth Assembly	4	-	C	DC1/69										
	consisting of:														
AGS2001/C3	NUT, 2BA	8	-	C	DC2/70										
EB8.81.1855	STUD, terminal	4	L65	C	DC2/71										
EB8.81.2177	WASHER	8	L72	C	DC2/72										
EB8.81.1857	WASHER	4	L72	C	DC2/73										



CANBERRA P.R. MK9 — REAR FUSELAGE- ELECTRICAL INSTALLATION



CANBERRA PR MK9 — REAR FUSELAGE ELECTRICAL-INSTALLATION

This file was downloaded  
from the RTFM Library.

Link: [www.scottbouch.com/rtfm](http://www.scottbouch.com/rtfm)

Please see site for usage terms,  
and more aircraft documents.

