

Part No.	Description	No. off	Material Specification	Class of Eqpt M.R. or L.M.	Plate	
	EQUIPMENT, FORWARD FUSELAGE, FRAMES 1 TO 12, ASSEMBLY (EB8.80.2281)	-	-	-	EA1/1	R
	Spares for:					
	AXE, Fire and Mounting Assembly (EB8.80.2291)	-	-	-	EA1/2	R
	Spares for:					
27N/4670513	AXE, fire	1	-	L	EA2/3	R
EA3.80.1831	STRAP, c/w fastener	2	-	C	EA2/4	R
	Attachment of strap to console structure					
SP80/406	Rivet, 1/8 in. dia.	2	-	C	-	R
SP10/B	Washer, 4BA	2	-	C	EA2/6	R
EB8.80.4177	BRACKET, Stowage (Mod. 4250 Pre Mod 5478/T)	1	-	-	-	R
EB8.80.4177x2	BRACKET, Stowage (Mod 5478/T Satisfied by CM/CAN/0511/STC)	1	-	-	EA1/8	R
	Spares for:					
EB8.80.4179	BRACKET, Assembly (Pre Mod 5478/T)	1	-	-	-	R
EB8.80.4179x2	BRACKET, Assembly (Mod 5478/T Satisfied by CM/CAN/0511/STC)	1	-	-	EA2/10	R
	Spares for:					
EB8.80.4185	LABEL	1	L59	-	EA2/11	R
EB8.80.4183	PIN, retaining	1	L56	-	EA2/12	R
EB8.80.4181	PIN, retaining	1	L56	-	EA2/13	R
EB8.80.4215	BRACKET, Stowage	1	-	-	EA1/14	R
	Spares for:					
EB8.80.4209	BRACKET, Assembly	1	-	-	EA2/15	R
	Spares for:					
EB8.80.4213	BRACKET	2	-	-	EA2/16	R
EB8.80.4195	LABEL	1	L72	-	EA2/17	R
EB8.80.4187	PIN	2	-	-	EA2/18	R
EB8.80.4221	BRACKET, Stowage	1	-	-	EA1/19	R
	Spares for:					
EB8.80.4169	BRACKET, Assembly	1	-	-	EA2/20	R
	Spares for:					
EB8.80.4189	LABEL	1	L72	-	EA2/21	R
	CARTRIDGE, Signal, Mounting Assembly (Pre Mod 4372) (EB8.85.101)	-	-	-	-	R
	Spares for:					
AS2249	STOWAGE, signal cartridge, 4-unit	3	-	P	-	R

EQUIPMENT  
AIRCRAFT - GENERAL

Part No.	Description	No. off	Material Specification	Class of Eqpt M.R. or L.M.	Plate	
					1 2 3 4 5 6	
AS4563/3C	Attachment of stowage to structure port side					
	Bolt, csk. 2BA	4	-	C	-	R
	CARTRIDGE, Signal, Mounting Assembly (Mod 4372) (EB8.85.119)	-	-	-	EA1/25	R
	Spares for:					
AS2249	STOWAGE, signal cartridge 4 unit	2	-	P	EA2/26	R
	Attachment of stowage to structure					
AS4563/3C Martin Baker 0/MBEU/5473	Bolt, csk. hd. 2BA	8	-	-	EA2/27	R
	CLIP, warning plate	3	-	C	EA1/28	R
	Attachment of clip to canopy locking cover and skin frames 1-1A port side					
AS2230/405 AGS2050/419BS	Rivet, csk. 1/8 in. dia.	2	-	C	-	R
	Rivet, pop, 1/8 in. dia	2	-	C	-	R
	COMPASS, G.4B, Magnetic, Installation (EB8.80.1687)	-	-	-	EA1/31	R
	Consisting of:					
6B/4343641 6B/4343640	AMPLIFIER, UNIT TYPE B	1	-	P	EA2/32	R
	GYRO, unit, type B	1	-	P	EA2/33	R
	Attachment of gyro unit to pilots main instrument panel					R
A44/C28 6B/4352094	Screw, 2BA	4	-	C	EA2/34	R
	INDICATOR, master type E5	1	-	P	EA2/35	R
	Attachment of master indicator to navigator's port instrument panel					
AGS2002/C4 A44/C24 A44/C32 6B/408	Nut, stiff, 2BA	1	-	C	-	R
	Screw, 2BA	1	-	C	EA2/37	R
	Screw, 2BA	2	-	C	EA2/38	R
	PANEL, control	1	-	P	EA2/39	R
	Attachment of control panel to structure between frames 6-7, starboard side					
A25/1B SP13/B 6B/4343607	Bolt, 4BA	4	-	C	EA2/40	R
	Washer, 4BA	4	-	C	EA2/41	R
	TRAY, mounting, amplifier	1	-	P	EA2/42	R

Part No.	Description	No. off	Material Specification	Class of Eqpt M.R. or L.M.	Plate										
						1	2	3	4	5	6				
	Attachment of amplifier mounting tray to structure between frames 7-8, starboard side														
A25/1E	Bolt, 1/4 in. BSF	4	-	C	EA2/43										R
SP13/E	Washer, 1/4 in.	4	-	C	EA2/44										R
	CONSOLE, Navigators, Frames 1A-3, Starboard Assembly (EB8.80.2651)	-	-	-	EA1/45										R
	Spares for:														
10AJ/220	MOUNTING, type 1038, indicator unit	1	-	L	EA7/46										R
10A/221	MOUNTING, type 1040, indicator unit	1	-	L	EA7/47										R
	Attachment of mounting to console														
AS1246/6B	Bolt, 4BA	4	-	C	EA7/48										R
	PAD, Mounting Indicator Unit, Assy (EB8.80.2757)	1	-	-	EA7/49										R
	Spares for:														
10AJ/156	MOUNTING, anti-vibration type 965	1	-	L	EA7/50										R
EB8.80.2757/B	PAD, rubber	1	-	C	EA7/51										R
	Attachment of pad to mounting														
AGS2001/B1	Nut, stiff, 4BA	4	-	C	EA7/52										R
A33/B12	Screw, csk, 4BA	4	-	C	EA7/53										R
	Attachment of mounting pad to console														
AS1246/6B	Bolt, 4BA	1	-	C	EA7/54										R
6D/2383	REGULATOR, oxygen Mk 21B	1	-	P	EA7/55										R
	PANEL, Navigators Switch and Dimmer Assembly (EB8.81.4945) (See Section ED)	-	-	-	EA7/56										R
EB8.82.2537	PANEL, mounting (Mod 5137)	1	L72x14SWG	C	EA7/57										R
	PANEL, Navigators Illuminated (SRIM 3911) (Pre Mod 5137)	-	-	-	-										R
EB8.82.2523	PANEL, Navigators Illuminated (Mod 5137)	1	-	C	EA7/59										R
EB8.82.2527	PLATE, Blanking Assembly (Mod 5155 Pre Mod 5481)	1	-	LM	EA7/60										R
	Spares for:														
DZUS	FASTENER, cup (Mod 5155)	4	-	C	EA7/61										R
PC3-1/2	FASTENER, spring (Mod 5155)	4	-	C	EA7/62										R
DZUS	FASTENER, stud, (Mod 5155)	4	-	C	EA7/63										R
PS3-1/2	FASTENER, stud, (Mod 5155)	4	-	C	EA7/63										R
DZUS	PLATE, blanking (Mod 5155) (Make from 30B/9611216)	1	L72x16SWG	LM	EA7/64										R
PF3-1/2-38-545	PLATE, blanking (Mod 5155) (Make from 30B/9611216)	1	L72x16SWG	LM	EA7/64										R
EB8.82.9525A	PLATE, blanking (Mod 5155) (Make from 30B/9611216)	1	L72x16SWG	LM	EA7/64										R
	PANEL, Navigators Undercarriage Fuse Assembly (EB8.81.6665) (See Section ED)	-	-	-	EA7/65										R

EQUIPMENT  
AIRCRAFT - GENERAL

Part No.	Description	No. off	Material Specification	Class of Eqpt M.R. or L.M.	Plate							
						1	2	3	4	5	6	
	CONSOLE, Navigators, Starboard Upper Installation (Mod 5155, Mod 5137 Satisfied by (EB8.82.2535)	-	-	-	EA7/66							R
	Spares for:											
EB8.82.2533	PLATE, Assembly (Mod 5137 Pre Mod 5481)	1	-	LM	EA7/67							R
	Spares for:											
5L/9959118	BULB, filament (Mod 5137)	2	-	C	EA7/68							R
5CX/6509	LAMP, Warning Green (Mod 5137)	1	-	C	EA7/69							R
5CX/5604	LAMP, Warning Amber (Mod 5137)	1	-	C	EA7/70							R
EB8.82.2531	PLATE (Mod 5137) (Make from 30B/9611218)	1	L72x18SWG	LM	EA7/71							R
EB8.82.2529	PLATE, Blanking Assembly (Mod 5137 Pre Mod 5481)	1	-	LM	EA7/72							R
	Spares for:											
DZUS PC3-1/2 DZUS	FASTENER, cup (Mod 5137)	4	-	C	EA7/73							R
PS3-1/2 DZUS	FASTENER, spring (Mod 5137)	4	-	C	EA7/74							R
PF3-1/2-38-545 EB8.82.2529A	FASTENER, stud (Mod 5137)	4	-	C	EA7/75							R
	PLATE, blanking (Mod 5137) (Make from 30B/9611216)	1	L72x16SWG	LM	EA7/76							R
EB8.82.2525	PLATE, Blanking Assembly (Mod 5137)	1	-	LM	-							R
	Spares for:											
DZUS PC3-1/2 DZUS	FASTENER, cup (Mod 5137)	4	-	C	-							R
PS3-1/2 DZUS	FASTENER, spring (Mod 5137)	4	-	C	-							R
PF3-1/2-38-545 EB8.82.2525A	FASTENER, stud (Mod 5137)	4	-	C	-							R
	PLATE, blanking (Mod 5137) (Make from 30B/9611216)	1	L72x16SWG	LM	-							R
	CONSOLE, Navigators, Port Assembly	-	-	-	-							R
	Spares for:											
EB8.80.3987	PANEL, Navigators Console, Port Assembly (Mod 5167)	1	-	-	EA1/83							R
	Spares for:											
AGS2008/C1	NUT, anchor, 2BA (Mod 5167)	3	-	C	EA1/84							R
	CONTAINER, Navigators, Instruments Assy (Mod 5478/N Satisfied by CM/CAN/0465/NEAF)	1	-	-	EA7/85							R
	Spares for:											
EB8.80.4145	CONTAINER, instruments (Mod 5478/N)	1	-	L	EA7/86							R

EQUIPMENT  
AIRCRAFT - GENERAL

Part No.	Description	No. off	Material Specification	Class of Eqpt M.R. or L.M.	Plate									
						1	2	3	4	5	6			
	Attachment of container to control panel													
A25/1B	Bolt, 4BA (Mod 5478/N)	1	-	C	EA7/87									R
AGS2001/B1	Nut, stiff, 4BA (Mod 5478/N)	1	-	C	EA7/88									R
SP13/B	Washer, 4BA (Mod 5478/N)	1	-	C	EA7/89									R
	CONTAINER, Urine, Pilots, Assy (EB8.80.4243)	-	-	-	EA1/90									R
	Spares for:													
Terry 80/6	CLIP, spring	1	-	C	EA3/91									R
	Attachment of clip to pilots side member													
AGS2050/530	Rivet, 5/32 in. dia.	2	-	C	-									R
27H/3224	CONTAINER, Urine, Mk 2	1	-	L	EA3/93									R
27H/2316	FUNNEL	1	-	C	EA3/94									R
	CONTAINER, Urine, Navigators Assy (EB8.80.2287)	-	-	-	EA1/95									R
	Spares for:													
27H/2315	CLIP, spring	2	-	C	EA3/96									R
	Attachment of clip to structure between frames 2-3 port													
A25/1B	Bolt, 4BA	2	-	C	EA3/97									R
AGS2001/B1	Nut, stiff, 4BA	2	-	C	EA3/98									R
SP15/B	Washer, 4BA	2	-	C	EA3/99									R
27H/4605582	CONTAINER, urine, Mk. 2	1	-	L	EA3/100									R
27H/4605567	FUNNEL	1	-	C	EA3/101									R
EB8.83.1659	CURTAIN, Blackout, Navigator's Window, Port and Starboard Group	2	-	L	EA1/102									R
	Spares for:													
Newey 5/4/6	FASTENER, socket and top	1	-	C	EA3/103									R
	Attachment of curtain to stringer													
AGS2050/424BS	Rivet, 1/8 in. dia.	8	-	C	-									R
EB8.83.1659/C	Strip, attachment 20 swg	1	L72	LM	EA3/105									R
EB8.00.555	CURTAIN, blackout, pressure cabin, frame 5, group	1	-	L	EA1/106									R
	FIRE EXTINGUISHER, and First Aid Stowage Container, Frames 3-4, Starboard, Assembly (EB8.80.2239)	-	-	-	EA1/107									R
	Spares for:													
27N/106	BRACKET, fire extinguisher, type 11B/180	1	-	L	EA3/108									R

EQUIPMENT  
AIRCRAFT - GENERAL

Part No.	Description	No. off	Material Specification	Class of Eqpt M.R. or L.M.	Plate								
						1	2	3	4	5	6		
EA.6	Attachment of bracket to structure												
AS1242/7C	Bolt, csk, 2BA	5	-	C	EA3/109								R
AS2810/8/04	Tube, distance 20 swg	5	T4	LM	EA3/110								R
EA1.80.881	CONTAINER, first aid stowage	1	-	C	EA3/111								R
	Attachment of first aid container to structure												
AS1248/4B	Bolt, 4BA	4	-	C	EA3/112								R
27N/299	EXTINGUISHER, fire, trigger type, 34H	1	-	L	EA3/113								R
	FLAP, Switch and Undercarriage Switch Lock, Stowage Frame 6, Port Side, Assembly (EA9.83.149)	-	-	-	EA1/114								R
	Spares for:												
EA3.83.173	BAG, stowage, flap switch locking pin	1	Canvas	C	EA4/115								R
EA3.83.295	BAG, stowage, undercarriage locking pin	1	Canvas	C	EA4/116								R
	Attachment of stowage bag to pilot's floor structure												
AGS2001/B1	Nut, stiff, 4BA	1	-	C	EA4/117								R
EA9.83.151	LOCK, Flap Switch, Group	1	-	C	EA4/118								R
	Spares for:												
Aviation Dev. A405	PIN, "Pip", quick release	1	-	C	EA4/119								R
EA3.83.299	LOCK, undercarriage switch, group	1	-	C	EA4/120								R
6A/1046811	HOLDER, correction card	1	-	C	EA1/121								R
6B/1054118	HOLDER, Mk 4, compass deviation card	1	-	L	EA1/122								R
	Attachment of holder to access panel, navigator's hatch coaming frames 1C-2 starboard side.												
SP80/304	Rivet, 3/32 in. dia.	4	-	C	-								R
EB8.80.3173	HOLDER, deviation card	1	-	-	EA1/124								R
	INSTRUMENT AND BOOK, Navigator's Stowage, Frames 2-3 Starboard Side Assembly (EB8.80.2301)	-	-	-	EA1/125								R
	Spares for:												
5CX/1041518	FLOODLIGHT, type D, red	1	-	L	EA4/126								R
	Attachment of floodlight to instrument and book stowage												
AS1248/1B	Bolt, 4BA	2	-	C	EA4/127								R
AGS2001/B1	Nut, stiff, 4BA	2	-	C	EA4/128								R
SP10/B	Washer, 4BA	2	-	C	EA4/129								R
EB8.80.2297	STOWAGE, navigator's instrument and book	1	Glasscloth	C	EA4/130								R

Part No.	Description	No. off	Material Specification	Class of Eqpt M.R. or L.M.	Plate									
						1	2	3	4	5	6			
	Attachment of stowage to console and structure													
AS1246/2C SP15/C	Bolt, 2BA	4	-	C	EA4/131									R
	Washer, 2BA	4	-	C	EA4/132									R
	LAMP, Inspection and Extension Lead Stowage, Navigator's Seat Beam, Port Side Assembly (EB8.80.2283)	-	-	C	EA1/133									R
	Consisting of:													
EB8.80.2285	BAG, stowage, inspection lamp	1	Canvas	C	EA4/134									R
	Attachment of stowage bag to navigator's seat beam													
AS1246/2B SP15/B	Bolt, 4BA	3	-	C	EA4/135									R
	Washer, 4BA	3	-	C	EA4/136									R
5CX/4330001	LAMP, inspection, Mk 2	1	-	L	EA4/137									R
5CX/5430464	LEAD, extension, c/w plug, socket and canvas pouch	1	-	L	EA4/138									R
	Attachment of canvas pouch to navigator's seat beam													
A32/A12 SP15/A	Screw, 6BA	3	-	C	EA4/139									R
	Washer, 6BA	3	-	C	EA4/140									R
	LEAK STOPPER, Stowage, Frames 1-1B and 2A-3, Starboard Side Assembly (Pre Mod 5478/E Satisfied by CM/CAN/0236/NEAF) (EB8.80.2281)	-	-	-	-									R
	Spares for:													
Normalair 504120	ENVELOPE, leak stopper (Pre Mod 5478/E Satisfied by CM/CAN/0236/NEAF)	5	-	C	-									R
	Attachment of envelope to structure													
A33/B10	Screw, csk, 4BA (Pre Mod 5478/E Satisfied by CM/CAN/0236/NEAF)	4	-	C	-									R
	MIRROR, Rear View and E.2B Compass, Pilots Windscreen Assembly (EB8.80.2219)	-	-	-	EA1/144									R
	Consisting of:													
EA9.80.1049	BLOCK, mounting, compass and mirror	1	-	C	EA5/145									R
	Attachment of block to windscreen rear hoop													
A61/15G AGS2002/G3 SP15/G	Bolt, 5/16 in. BSF	1	-	C	EA5/146									R
	Nut, stiff, 5/16 in. BSF	1	-	C	EA5/147									R
	Washer, 5/16 in.	2	-	C	EA5/148									R



Part No.	Description	No. off	Material Specification	Class of Eqpt M.R. or L.M.	Plate									
						1	2	3	4	5	6			
	Attachment of bridge light to pressure gauge and panel													
AS1246/5B	Bolt, 4BA. (Use with 6A/5393)	2	-	C	EA5/181									R
A116/5B	Bolt, 6-32 UNC (Use with 6A/8682)	2	-	C	EA5/182									R
Dowty C5162Y Mk.3	SWITCH, button type B	1	-	L	EA5/183									R
	Attachment of button switch to panel													
A47/Z	Nut	2	-	C	EA5/184									R
A31/Z10	Screw, 8BA	2	-	C	EA5/185									R
AGS2035/A	Washer, shakeproof, 8BA	2	-	C	EA5/186									R
	PANEL, Pilots Instrument, Assembly (EB8.80.101) (See Section ED)	-	-	-	EA1/187									R
	PISTOL, Signal, Navigators, Between Frames 2-3 Port side Assembly (EB8.80.3937) (Mod 3412)	-	-	-	EA1/188									R
	Consisting of:													
7B/1785	MOUNTING, pistol, Mk. 2	1	-	L	EA5/189									R
7B/1784	PISTOL, signal, Mk. 2	1	-	P	EA5/190									R
	Attachment of pistol and mounting to fuselage structure													
A25/28C	Bolt, hex. hd, 2BA	4	-	C	EA5/191									R
AGS2001/C1	Nut, stiff, 2BA	4	-	C	EA5/192									R
EB8.80.3939	Washer, insulating, 1/32 in. thick	1	Langite	LM	EA5/193									R
SP15/C	Washer, 2BA	4	-	C	EA5/194									R
	SEAT, Pilots Ejection, Assembly (EB8.16.227)	-	-	-	EA1/195									R
	Consisting of:													
Martin Baker A/MBEU/3321	BRACKET, trip rod, pressure bulkhead, port	1	-	C	EA6/196									R
Martin Baker A/MBEU/3666	BRACKET, leg restraint strap	2	-	C	EA6/197									R
	Attachment of bracket to pressure bulkhead or pilots floor													
A25/2C	Bolt, 2BA	8	-	C	EA6/198									R
A27/CP	Nut, 2BA	8	-	C	EA6/199									R
SP15/C	Washer, 2BA	8	-	C	EA6/200									R
12K/1256	CARTRIDGE, seat ejection, set No. 3, Mk. 1	1 set	-	C	EA1/201									R
Martin Baker O/MBEU/3325	PIN, quick release, trip rod, port	1	-	C	EA6/202									R
Martin Baker O/MBEU/1434	PIN, quick release, leg restraint straps and trip rod starboard	3	-	C	EA6/203									R
Martin Baker E/MBEU/1398EE	RAIL, seat guide group (for spares see AP4515S Vol 3 Pt 1)	1	-	P	EA6/204									R

EQUIPMENT  
AIRCRAFT - GENERAL

Part No.	Description	No. off	Material Specification	Class of Egpt M.R. or L.M.	Plate										
						1	2	3	4	5	6				
	Attachment of guide rail to pressure bulkhead														
A25/7E	Bolt, 1/4 in. BSF	17	-	C	EA6/205										R
EA9.80.223	Bolt, shoulder 5/16 in. dia. x 1/4 in. BSF	4	-	C	EA6/206										R
AGS2001/E1	Nut, stiff, 1/4 in. BSF	21	-	C	EA6/207										R
EA3.80.481	Packing, fillet	17	DTD610	C	EA6/208										R
SP15/E	Washer, 1/4 in.	17	-	C	EA6/209										R
SP15/G	Washer, 5/16 in.	4	-	C	EA6/210										R
Martin Baker 27L/4541351 #	SEAT, pilots ejection, group Mk.3CS Mk 2 Martin Baker Mod 810 and ES.1109 to be embodied (For spares see AP4545S Vol 3, Pt 1)	1	-	P	EA1/211										R
	SEAT, Navigators Ejection Assembly (EB8.16.649)	-	-	-	EA1/212										R
	Consisting of:														
Martin Baker	RAIL, seat guide, group (For spares see AP4515S, Vol 3 Pt 1)	1	-	P	EA1/213										R
	Attachment of guide rail to seat beam														
A25/7E	Bolt, 1/4 in. BSF	4	-	C	EA1/214										R
A25/5G	Bolt, 5/16 in. BSF	6	-	C	EA1/215										R
Martin Baker 27L/4541349 #	SEAT, navigators ejection, 4QS Mk 2 group, Martin Baker Mod ES2238 (For spares see AP4515S, Vol 3 Pt 1) (Pre Mod 4397)	1	-	P	-										R
Martin Baker 27L/6176083 #	SEAT, Navigators, ejection 4QS Mk.3 group, Martin Baker Mod ES54 (For spares see AP4515S Vol 3 Pt 1) (Mod 4397)	1	-	C	EA1/217										R
	Attachment of leg restraint strap to keel structure														
A25/2C	Bolt, 2BA	4	-	C	EA1/218										R
	STRUCTURE, Pilot's Panels and Console, Assembly (EB8.80.141)	-	-	-	EA1/219										R
	Spares for:														
	STRUCTURE, Pilot's Console, Port, Assembly (EB8.80.1427)	-	-	-	EA1/220										R
	Spares for:														
EB8.80.1223 #	PANEL, access, flying controls	1	L72	C	EA1/221										R
# NOTE	On introduction of Command Mod CAN/0137/NEAF (Mod 4842) ensure that Demand Emergency Oxygen Regulator Mk (Ref. 6D/2517) is fitted to ejection seat in place of Demand Emergency Oxygen Regulator Mk 1 (Ref. 6D/2285)														

EQUIPMENT  
AIRCRAFT - GENERAL

Part No.	Description	No. off	Material Specification	Class of Eqpt M.R. or L.M.	Plate							
						1	2	3	4	5	6	
	Attachment of access panel to structure											
AS1246/1C	Bolt, 2BA	12	-	C	EA1/222							R
	STRUCTURE, Pilots Main Instrument Panel Assembly (SCSHQ 125222)	-	-	-	EA1/223							R
	Spares for:											
EB8.80.3679	BRACKET, snub holder, bottom (Mod 3265)	3	L59	MR	-							R
EB8.80.3681	BRACKET snub holder, top, port (Mod 3265)	1	L59	MR	-							R
EB8.80.3683	BRACKET, snub holder, top, Starboard (Mod 3265)	1	L59	MR	-							R
	Attachment of snub holder bracket to structure											
A25/2B	Bolt, 4BA	2	-	C	-							R
AGS2001/B1	Nut, stiff, 4BA	2	-	C	-							R
SP13/B	Washer, 4BA	2	-	C	-							R
EB8.80.1519	BRACKET, A/V Mounting, bottom, group	3	-	MR	-							R
EB8.80.1515	BRACKET, A/V Mounting, top, port group	1	-	MR	-							R
EB8.80.1521	BRACKET, A/V mounting, top, starboard group	1	-	MR	-							R
	Attachment of bracket and A/V to A/V mounting on structure											
A15/14E	Bolt, 1/4 in. BSF	1	-	C	-							R
AGS2001/E1	Nut, stiff, 1/4 in. BSF	1	-	C	-							R
EEAS28/51ER	Washer, special	3	L72	C	-							R
SP13/E	Washer	1	-	C	-							R
150.P12	MOUNTING, anti-vibration	5	-	C	-							R
	Attachment of A/V mounting to mounting bracket											
AGS2002/B1	Nut, stiff, 4BA	4	-	C	-							R
A32/B8	Screw, 4BA	4	-	C	-							R
A32/B10	Screw, 4BA	4	-	C	-							R
A32/B12	Screw, 4BA top starboard only	4	-	C	-							R
EB7.80.497	SNUB, panel	5	Rubber	C	-							R
	EQUIPMENT, Hinged Nose, Frames A to D Assembly (EB8.80.2315)	-	-	-	EA8/1							R
	Spares for:											
	RACK, Navigators, Assembly, (EB8.80.2505)	-	-	-	EA8/2							R

EQUIPMENT  
AIRCRAFT - GENERAL

Part No.	Description	No. off	Material Specification	Class of Eqpt M.R. or L.M.	Plate								
						1	2	3	4	5	6		
	Spares for:												
	BRACKET, A/V Mounting, Navigator's Instrument Panel, Port, Assembly (EB8.80.2633)	3	-	-	EA9/3								R
	Consisting of:												
EB8.00.533 10AJ/135	BRACKET, mounting, group	3	-	C	EA9/4								R
	MOUNTING, A/V, type 947	3	-	L	EA9/5								R
	Attachment of A/V mounting to bracket												
A25/1B AGS2002/B1	Bolt, 4BA	12	-	C	EA9/6								R
	Nut, stiff, 4BA	12	-	C	EA9/7								R
	BRACKET, A/V Mounting, Navigator's Instrument Panel, Starboard Assembly (EB8.80.2635)	3	-	-	EA9/8								R
	Consisting of:												
EB8.00.2631 10AJ/133	BRACKET, mounting, group	3	-	C	EA9/9								R
	MOUNTING, A/V	3	-	L	EA9/10								R
	Attachment of A/V mounting to bracket												
A25/1B AGS2002/B1	Bolt, 4BA	12	-	C	EA9/11								R
	Nut, stiff, 4BA	12	-	C	EA9/12								R
	Attachment of bracket to rack structure												
A25/11B AGS2002/B1 EB8.80.2699	Bolt, 4BA	6	-	C	EA9/13								R
	Nut, stiff, 4BA	6	-	C	EA9/14								R
	BRACKET, mounting radio compass control unit	1	L72	C	EA9/15								R
	Attachment of bracket to rack structure												
AS1246/1C	Bolt, 2BA	4	-	C	EA9/16								R
	BRACKET, Mounting Camera Functioning Lights, Port, Assembly (Mod 3754) (EB8.80.3963)	-	-	-	EA9/17								R
	Consisting of:												
EB8.80.3961 5L/9951273 H2803	BRACKET, mounting	1	L72	MR	EA9/18								R
	FILAMENT, 28V.3.5W	5	-	C	EA9/19								R
	LAMP, warning green	5	-	L	EA9/20								R
	Attachment of bracket to radio compass mounting bracket												
AS1248/1/2B	Bolt, 4BA	2	-	C	EA9/21								R
	BRACKET, mounting, Camera Functioning Lights Starboard Assembly (Mod 3754) (EB8.80.3959)	-	-	-	EA9/22								R

Part No.	Description	No. off	Material Specification	Class of Eqpt M.R. or L.M.	Plate									
						1	2	3	4	5	6			
	Consisting of:													
EB8.80.3957	BRACKET, mounting	1	L72	MR	EA9/23									R
5L/9951273	FILAMENT, 28V.3.5W	4	-	C	EA9/24									R
5L/9959118	FILAMENT, midget, 28V.04A	1	-	C	EA9/25									R
H2803	LAMP, warning green	3	-	L	EA9/26									R
H2805	LAMP, warning amber	1	-	L	EA9/27									R
Thorn PPL120	LAMPHOLDER, type A.No.2	1	-	L	EA9/28									R
Thorn P821X1	PANEL, Translite	1	-	L	EA9/29									R
Thorn 80/10/0098	TERMINAL, earth	1	-	C	EA9/30									R
	Attachment of bracket to rack structure													
AS1246/1B	Bolt, 4BA	4	-	C	EA9/31									R
6B/6768	COMPUTER, Navigation Type 9447/27 (Pre Mod 5286)	1	-	-	-									R
6B/6562603	COMPUTER, Navigation Type 9447D/27C (Mod 5286)	1	-	P	EA9/33									R
10AJ/135	MOUNTING, A/V type, 947 navigator's instrument panel mounting bracket, port	3	-	L	EA9/34									R
10AJ/133	MOUNTING, A/V type 947, navigator's instrument panel mounting bracket, starboard	3	-	L	EA9/35									R
	Attachment of A/V mounting to rack structure													
A25/1/2B	Bolt, 4BA	24	-	C	EA9/36									R
AGS2002/B1	Nut, stiff, 4BA	24	-	C	EA9/37									R
10AJ/611	MOUNTING, type 6309, tail warning indicator	1	-	L	-									R
	Attachment of mounting to rack structure													
AS1246/8E	Bolt, 1/4 in. BSF	4	-	C	-									R
10AJ/1572	MOUNTING, type 8288, amplifier unit	1	-	L	EA9/40									R
	Attachment of mounting to rack structure													
A36/A32	Screw, 6BA	4	-	C	EA9/41									R
	PANEL, Navigator's Instrument, Port, Assembly (See Section ED) (EB8.80.2521)	-	-	-	EA9/42									R
EB8.80.4123	PANEL, Hinged Installation	-	-	-	EA9/43									R
	Spares for:													
EB8.80.4125	PANEL, Hinged Assembly	-	-	-	EA9/44									R
	PANEL, Navigators, Instrument, Starboard, Assembly (See Section ED) (EB8.80.2643)	-	-	-	EA9/45									R
	TABLE, Navigator's Assembly (EB8.80.2647)	-	-	-	EA9/46									R

EQUIPMENT  
AIRCRAFT - GENERAL

Part No.	Description	No. off	Material Specification	Class of Eqpt M.R. or L.M.	Plate							
						1	2	3	4	5	6	
	Spares for:											
EB8.80.2665	BRACKET, slide	1	-	C	EA8/47							R
EB8.80.2666	BRACKET, slide	1	-	C	EA8/48							R
EB8.80.2669	BRACKET	1	-	C	EA8/49							R
EB8.80.2670	BRACKET	1	-	C	EA8/50							R
EB8.80.2685	TABLE, Navigators, Group (Pre Mod 5478/K)	1	-	L	-							R
EB8.80.2685x2	TABLE, Navigators, Group (Mod 5478/K Satisfied by CM/CAN/0324/NEAF)	1	-	L	EA8/52							R
	Spares for:											
EB8.80.2751	CLIP, spring	3	DTD187A	C	EA8/53							R
	Attachment of spring clip to table											
SP64/D6	Screw, wood	1	-	C	EA8/54							R
EB8.80.2691	DRAWER, port, group	1	Darvic	C	EA8/55							R
EB8.80.2692	DRAWER, starboard, group	1	Darvic	C	EA8/56							R
EB8.80.2683x2	TABLE, navigators, bare (Mod 5478/K Satisfied by CM/CAN/0324/NEAF)	1	-	L	EA8/57							R
6B/4349770	TRAY, mounting, G.P.I. amplifier	1	-	P	EA8/58							R
	Attachment of mounting tray to structure between frames B-C, starboard side											
A32/B16	Screw, 4BA	4	-	C	EA8/59							R
	VIEW FINDER, Recce, Mounting Assembly (EB8.80.2649)	-	-	-	EA8/60							R
	Consisting of:											
EB8.80.2653	BRACKET, attachment	1	L65	C	EA8/61							R
	Attachment of bracket to upper navigators shelf between frames C-D											
A25/2C	Bolt, 2BA	4	-	C	EA8/62							R
AGS2002/C1	Nut, stiff, 2BA	4	-	C	EA8/63							R
SP15/C	Washer, 2BA	4	-	C	EA8/64							R
EB8.80.2681	LINK, mounting	1	L65	C	EA8/65							R
	Attachment of link to attachment bracket											
SP4/Y/D19	Pin, 1/4 in. dia.	1	-	C	EA8/66							R
SP90/C5	Pin, split, 1/16 in. dia.	1	-	C	EA8/67							R
Hughes Ltd Z157/A/77	VIEW FINDER, group (Mod. 4148)	1	-	P	EA8/68							R
	Attachment of view finder to link											
SP4/Y/D19	Pin, 1/4 in. dia.	1	-	C	EA8/69							R
SP90/C5	Pin, split, 1/16 in. dia.	1	-	C	EA8/70							R
	EQUIPMENT, REAR FUSELAGE, ASSEMBLY (EB8.83.1005)	-	-	-	EA10/1							R

Part No.	Description	No. off.	Material Specification	Class of Eqpt M.R. or L.M.	Plate	
	Spares for:					
EB8.80.1777	BRACKET	2	L65	C	EA10/2	R
EB8.80.1781	BRACKET	4	L65	C	EA10/3	R
EB8.80.1775	CRATE, Stowage, Survival Pack, Port Group	1	-	P/MR	EA10/4	R
EB8.80.1776	CRATE, Stowage, Survival Pack, Starboard, Group	1	-	P/MR	EA10/5	R
	Consisting of:					
EB8.80.1783	CRATE, Group	2	-	L	EA10/6	R
	Spares for:					
EB8.80.3201	NUT, knurled, 1/4 in. BSF	2	L64	C	EA10/7	R
EB8.80.1787	FRAME, hinged	2	-	L	EA10/8	R
	Attachment of hinged frame to crate					
EB8.80.1793	Tube, 1/4 in. o/d x 20 swg x 3.3 in.	4	T26	LM	EA10/9	R
EB8.80.1789	STRAP, 18 in. long	4	Coml Webb	C	EA10/10	R
EB8.80.1791	STRAP, c/w buckle, 15 in. long	4	Coml Webb	C	EA10/11	R
EB8.80.1795	STRAP, c/w buckle, 8 in. long	2	Coml Webb	C	EA10/12	R
EB8.80.1797	STRAP, 55 in. long	2	Coml Webb	C	EA10/13	R
	Attachment of strap to crate					
A25/13B	Bolt, 4BA	8	-	C	EA10/14	R
AGS2001/B1	Nut, stiff, 4BA	8	-	C	EA10/15	R
	Attachment of stowage crate to frames 36 and 37					
A25/3E	Bolt, 1/4 in. BSF	2	-	C	EA10/16	R
A25/7E	Bolt, 1/4 in. BSF	2	-	C	EA10/17	R
A25/8E	Bolt, 1/4 in. BSF	4	-	C	EA10/18	R
AGS2001/E1	Nut, stiff, 1/4 in. BSF	8	-	C	EA10/19	R
SP15/E	Washer, 1/4 in.	8	-	C	EA10/20	R
EA3.83.119	STOWAGE, Picketing Lug, Group	1	-	L	EA10/21	R
	Spares for:					
EA1.40.169	LUG, picketing	3	S11	C	EA10/22	R
	Attachment of picketing lug stowage to frame 32, starboard side					
SP80/404	Rivet, 1/8 in. dia.	8	-	C	-	R
	INSULATION, Pressure Cabin (EB8.17.500) (Mod 5000 ALT SB/9/046)					
	Spares for:					
EB8.17.469	BLANKET (Mod 5000 ALT SB/9/046)	1	-	C	EA11/2	R
EB8.17.471	BLANKET (Mod 5000 ALT SB/9/046)	1	-	C	EA11/3	R
EB8.17.481	BLANKET (Mod 5000 ALT SB/9/046)	1	-	C	EA11/4	R
EB8.17.473	BLANKET (Mod 5000 ALT SB/9/046)	1	-	C	EA11/5	R
EB8.17.477	BLANKET (Mod 5000 ALT SB/9/046)	1	-	C	EA11/6	R
EB8.17.479	BLANKET (Mod 5000 ALT SB/9/046)	1	-	C	EA11/7	R
EB8.17.521	BLANKET (Mod 5000 ALT SB/9/046)	1	-	C	EA11/8	R
EB8.17.483	BLANKET (Mod 5000 ALT SB/9/046)	1	-	C	EA11/9	R
EB8.17.485	BLANKET (Mod 5000 ALT SB/9/046)	1	-	C	EA11/10	R

EQUIPMENT  
AIRCRAFT - GENERAL

Part No.	Description	No. off	Material Specification	Class of Eqpt M.R. or L.M.	Plate							
						1	2	3	4	5	6	
EB8.17.475	BLANKET (Mod 5000 ALT SB/9/046)	1	-	C	EA11/11							R
EB8.17.487	BLANKET (Mod 5000 ALT SB/9/046)	1	-	C	EA12/12							R
EB8.17.489	BLANKET (Mod 5000 ALT SB/9/046)	1	-	C	EA12/13							R
EB8.17.493	BLANKET (Mod 5000 ALT SB/9/046)	1	-	C	EA12/14							R
EB8.17.573	BLANKET (Mod 5000 ALT SB/9/046)	1	-	C	EA12/15							R
EB8.17.571	BLANKET (Mod 5000 ALT SB/9/046)	1	-	C	EA12/16							R
EB8.17.491	BLANKET (Mod 5000 ALT SB/9/046)	1	-	C	EA12/17							R
EB8.17.495	BLANKET (Mod 5000 ALT SB/9/046)	1	-	C	EA12/18							R
EB8.17.497	BLANKET (Mod 5000 ALT SB/9/046)	1	-	C	EA12/19							R
EB8.17.533	BLANKET (Mod 5000 ALT SB/9/046)	1	-	C	EA11/20							R
EB8.17.529	BLANKET (Mod 5000 ALT SB/9/046)	1	-	C	EA11/21							R
EB8.17.531	BLANKET (Mod 5000 ALT SB/9/046)	1	-	C	EA11/22							R
EB8.17.527	BLANKET (Mod 5000 ALT SB/9/046)	1	-	C	EA11/23							R
EB8.17.559	BLANKET (Mod 5000 ALT SB/9/046)	1	-	C	EA12/24							R
EB8.17.561	BLANKET (Mod 5000 ALT SB/9/046)	1	-	C	EA12/25							R
EB8.17.563	BLANKET (Mod 5000 ALT SB/9/046)	1	-	C	EA12/26							R
EB8.17.545	BLANKET (Mod 5000 ALT SB/9/046)	1	-	C	EA12/27							R
EB8.17.535	BLANKET (Mod 5000 ALT SB/9/046)	1	-	C	EA11/28							R
EB8.17.537	BLANKET (Mod 5000 ALT SB/9/046)	1	-	C	EA11/29							R
EB8.17.539	BLANKET (Mod 5000 ALT SB/9/046)	1	-	C	EA11/30							R
EB8.17.541	BLANKET (Mod 5000 ALT SB/9/046)	1	-	C	EA12/31							R
EB8.17.543	BLANKET (Mod 5000 ALT SB/9/046)	1	-	C	EA12/32							R
EB8.17.569	BLANKET (Mod 5000 ALT SB/9/046)	1	-	C	EA11/33							R
EB8.17.547	BLANKET (Mod 5000 ALT SB/9/046)	1	-	C	EA11/34							R
EB8.17.549	BLANKET (Mod 5000 ALT SB/9/046)	1	-	C	EA11/35							R
EB8.17.525	BLANKET (Mod 5000 ALT SB/9/046)	1	-	C	EA11/36							R
EB8.17.557	BLANKET (Mod 5000 ALT SB/9/046)	1	-	C	EA12/37							R
EB8.17.565	BLANKET (Mod 5000 ALT SB/9/046)	1	-	C	EA12/38							R
EB8.17.555	BLANKET (Mod 5000 ALT SB/9/046)	1	-	C	EA12/39							R
EB8.17.567	BLANKET (Mod 5000 ALT SB/9/046)	1	-	C	EA12/40							R
EB8.17.553	BLANKET (Mod 5000 ALT SB/9/046)	1	-	C	EA12/41							R
EB8.17.551	BLANKET (Mod 5000 ALT SB/9/046)	1	-	C	EA11/42							R
EB8.17.523	BLANKET (Mod 5000 ALT SB/9/046)	1	-	C	EA11/43							R
EB8.17.501	BLANKET (Mod 5000 ALT SB/9/046)	1	-	C	EA11/44							R
EB8.17.499	BLANKET (Mod 5000 ALT SB/9/046)	1	-	C	EA12/45							R
EB8.17.519	BLANKET (Mod 5000 ALT SB/9/046)	1	-	C	EA12/46							R
EB8.17.503	BLANKET (Mod 5000 ALT SB/9/046)	1	-	C	EA11/47							R
EB8.17.505	BLANKET (Mod 5000 ALT SB/9/046)	1	-	C	EA11/48							R
EB8.17.507	BLANKET (Mod 5000 ALT SB/9/046)	1	-	C	EA11/49							R
EB8.17.509	BLANKET (Mod 5000 ALT SB/9/046)	1	-	C	EA12/50							R
EB8.17.511	BLANKET (Mod 5000 ALT SB/9/046)	1	-	C	EA12/51							R
EB8.17.513	BLANKET (Mod 5000 ALT SB/9/046)	1	-	C	EA12/52							R
EB8.17.515	BLANKET (Mod 5000 ALT SB/9/046)	1	-	C	EA12/53							R
EB8.17.517	BLANKET (Mod 5000 ALT SB/9/046)	1	-	C	EA12/54							R
EB8.17.593	BLANKET (Mod 5000 ALT SB/9/046)	1	-	C	EA11/55							R
EB8.17.591	BLANKET (Mod 5000 ALT SB/9/046)	1	-	C	EA11/56							R
EB8.17.589	BLANKET (Mod 5000 ALT SB/9/046)	1	-	C	EA11/57							R
EB8.17.587	BLANKET (Mod 5000 ALT SB/9/046)	1	-	C	EA11/58							R
EB8.17.585	BLANKET (Mod 5000 ALT SB/9/046)	1	-	C	EA11/59							R
EB8.17.583	BLANKET (Mod 5000 ALT SB/9/046)	1	-	C	EA11/60							R
EB8.17.581	BLANKET (Mod 5000 ALT SB/9/046)	1	-	C	EA11/61							R
EB8.17.579	BLANKET (Mod 5000 ALT SB/9/046)	1	-	C	EA11/62							R
EB8.17.577	BLANKET (Mod 5000 ALT SB/9/046)	1	-	C	EA11/63							R
EB8.17.575	BLANKET (Mod 5000 ALT SB/9/046)	1	-	C	EA11/64							R
EB8.17.685	BLANKET (Mod 5000 ALT SB/9/046)	1	-	C	EA11/65							R
EB8.17.683	BLANKET (Mod 5000 ALT SB/9/046)	1	-	C	EA11/66							R
EB8.17.619	BLANKET (Mod 5000 ALT SB/9/046)	1	-	C	EA11/67							R
EB8.17.617	BLANKET (Mod 5000 ALT SB/9/046)	1	-	C	EA12/68							R
EB8.17.615	BLANKET (Mod 5000 ALT SB/9/046)	1	-	C	EA12/69							R
EB8.17.613	BLANKET (Mod 5000 ALT SB/9/046)	1	-	C	EA12/70							R
EB8.17.611	BLANKET (Mod 5000 ALT SB/9/046)	1	-	C	EA12/71							R
EB8.17.609	BLANKET (Mod 5000 ALT SB/9/046)	1	-	C	EA12/72							R
EB8.17.607	BLANKET (Mod 5000 ALT SB/9/046)	1	-	C	EA12/73							R

EQUIPMENT  
AIRCRAFT - GENERAL

Part No.	Description	No. off	Material Specification	Class of Eqpt M.R. or L.M.	Plate	
EB8.17.605	BLANKET (Mod 5000 ALT SB/9/046)	1	-	C	EA12/74	R
EB8.17.603	BLANKET (Mod 5000 ALT SB/9/046)	1	-	C	EA12/75	R
EB8.17.601	BLANKET (Mod 5000 ALT SB/9/046)	1	-	C	EA12/76	R
EB8.17.599	BLANKET (Mod 5000 ALT SB/9/046)	1	-	C	EA12/77	R
EB8.17.597	BLANKET (Mod 5000 ALT SB/9/046)	1	-	C	EA12/78	R
EB8.17.595	BLANKET (Mod 5000 ALT SB/9/046)	1	-	C	EA12/79	R
EB8.17.641	BLANKET (Mod 5000 ALT SB/9/046)	1	-	C	EA11/80	R
EB8.17.639	BLANKET (Mod 5000 ALT SB/9/046)	1	-	C	EA11/81	R
EB8.17.637	BLANKET (Mod 5000 ALT SB/9/046)	1	-	C	EA11/82	R
EB8.17.635	BLANKET (Mod 5000 ALT SB/9/046)	1	-	C	EA11/83	R
EB8.17.633	BLANKET (Mod 5000 ALT SB/9/046)	1	-	C	EA11/84	R
EB8.17.631	BLANKET (Mod 5000 ALT SB/9/046)	1	-	C	EA11/85	R
EB8.17.629	BLANKET (Mod 5000 ALT SB/9/046)	1	-	C	EA11/86	R
EB8.17.627	BLANKET (Mod 5000 ALT SB/9/046)	1	-	C	EA11/87	R
EB8.17.625	BLANKET (Mod 5000 ALT SB/9/046)	1	-	C	EA11/88	R
EB8.17.623	BLANKET (Mod 5000 ALT SB/9/046)	1	-	C	EA11/89	R
EB8.17.621	BLANKET (Mod 5000 ALT SB/9/046)	1	-	C	EA11/90	R
EB8.17.643	BLANKET (Mod 5000 ALT SB/9/046)	1	-	C	EA12/91	R
EB8.17.645	BLANKET (Mod 5000 ALT SB/9/046)	1	-	C	EA12/92	R
EB8.17.647	BLANKET (Mod 5000 ALT SB/9/046)	1	-	C	EA12/93	R
EB8.17.649	BLANKET (Mod 5000 ALT SB/9/046)	1	-	C	EA12/94	R
EB8.17.651	BLANKET (Mod 5000 ALT SB/9/046)	1	-	C	EA12/95	R
EB8.17.653	BLANKET (Mod 5000 ALT SB/9/046)	1	-	C	EA12/96	R
EB8.17.655	BLANKET (Mod 5000 ALT SB/9/046)	1	-	C	EA12/97	R
EB8.17.657	BLANKET (Mod 5000 ALT SB/9/046)	1	-	C	EA12/98	R
EB8.17.659	BLANKET (Mod 5000 ALT SB/9/046)	1	-	C	EA12/99	R
EB8.17.661	BLANKET (Mod 5000 ALT SB/9/046)	1	-	C	EA12/100	R
EB8.17.663	BLANKET (Mod 5000 ALT SB/9/046)	1	-	C	EA12/101	R
EB8.17.665	BLANKET (Mod 5000 ALT SB/9/046)	1	-	C	EA12/102	R
EB8.17.673	BLANKET (Mod 5000 ALT SB/9/046)	1	-	C	EA11/103	R
EB8.17.671	BLANKET (Mod 5000 ALT SB/9/046)	1	-	C	EA11/104	R
EB8.17.669	BLANKET (Mod 5000 ALT SB/9/046)	1	-	C	EA11/105	R
EB8.17.667	BLANKET (Mod 5000 ALT SB/9/046)	1	-	C	EA11/106	R
EB8.17.681	BLANKET (Mod 5000 ALT SB/9/046)	1	-	C	EA12/107	R
EB8.17.679	BLANKET (Mod 5000 ALT SB/9/046)	1	-	C	EA12/108	R
EB8.17.677	BLANKET (Mod 5000 ALT SB/9/046)	1	-	C	EA12/109	R
EB8.17.675	BLANKET (Mod 5000 ALT SB/9/046)	1	-	C	EA12/110	R
	Attachment of insulating blankets to skin between frame 'A' and Pressure bulkhead					
Evostik 528	Adhesive (Mod 5000 ALT SB/9/046)	AR	-	C	-	R
EA1.17.39	Clip (Mod 5000 ALT SB/9/046)	810	DTD610	C	EA11/112	R
EA1.17.37	Spring (Mod 5000 ALT SB/9/046)	670	Spring Steel	C	EA11/113	R
EA1.17.35	BRACKET, angle (Mod 5000 ALT SB/9/046)	493	DTD610	C	EA11/114	R
	Attachment of angle bracket to stringer					
SP80/304	Rivet, 3/32 in. dia. (Mod 5000 ALT SB/9/046)	AR	-	C	-	R
	INSULATION, CAMERA BAYS, CENTRE FUSELAGE ASSEMBLY	-	-	-	-	R
	INSULATION, Forward Camera Bay, Frame 12B-13, Assembly (EB8.17.167) (Pre Mod 5000 ALT SB/9/046)	1	-	-	-	R
	INSULATION, Forward Camera Bay, Frames 12B-13, Assembly (EB8.17.725) (Mod 5000 ALT SB/9/046)	1	-	-	EA13/3	R

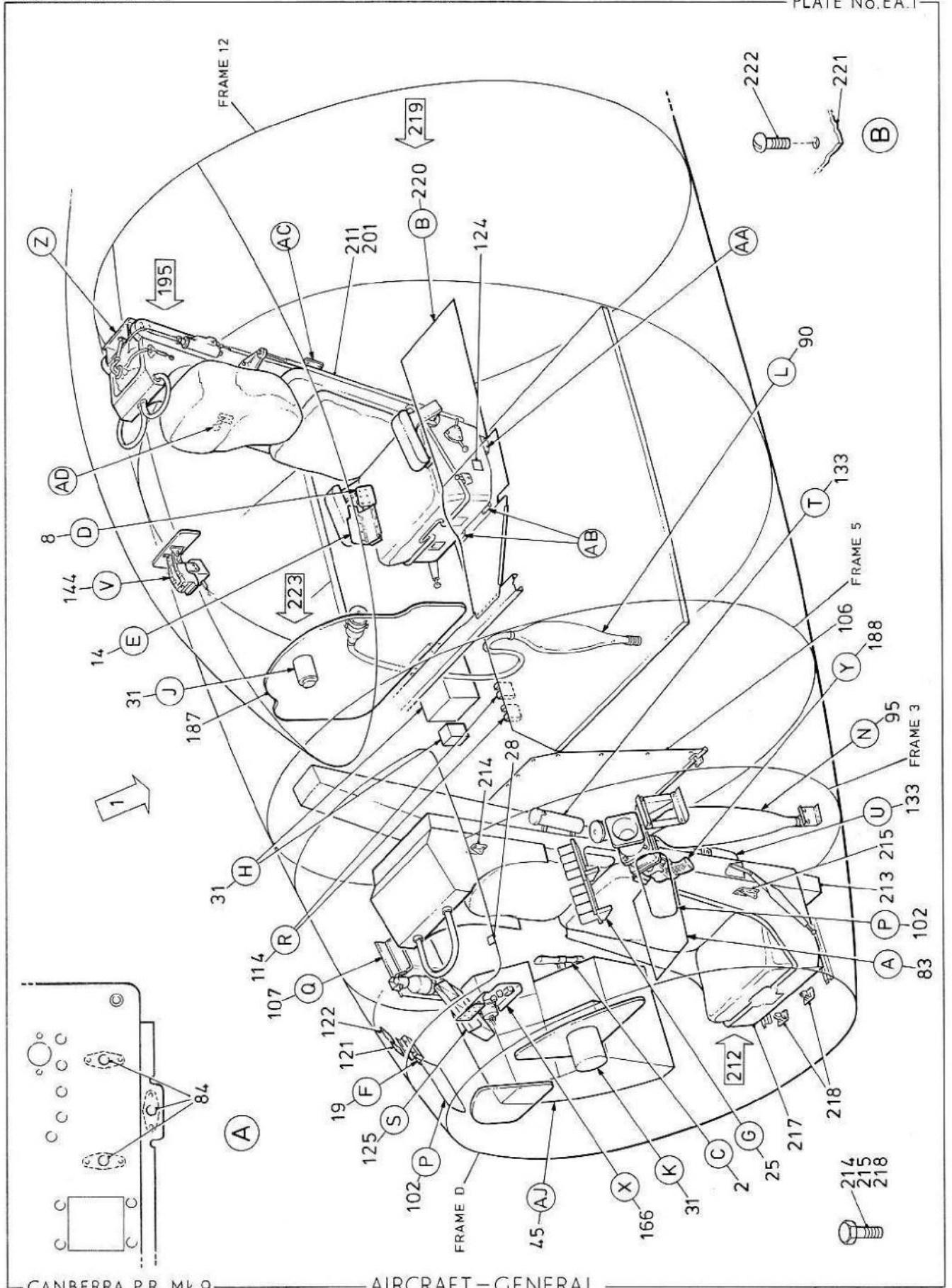
EQUIPMENT  
AIRCRAFT - GENERAL

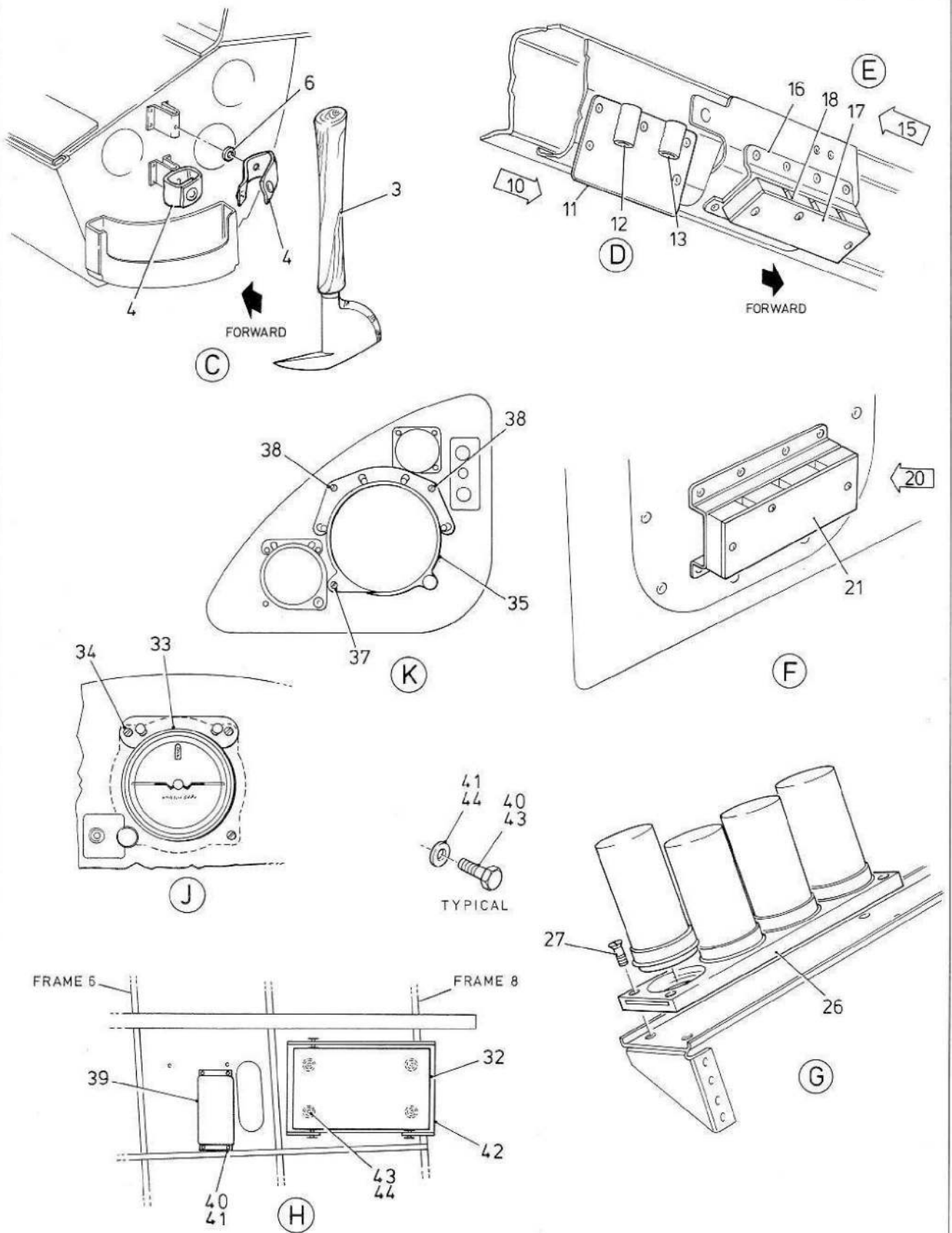
Part No.	Description	No. off	Material Specification	Class of Eqpt M.R. or L.M.	Plate		
					1 2 3 4 5 6		
	Spares for:						
EB8.17.167/1	BLANKET, insulating (Pre Mod 5000 ALT SB/9/056)	1	Fibreglass	C	-	R	
EB8.17.701	BLANKET (Mod 5000 ALT SB/9/046)	1	Fibreglass	C	EA13/5	R	
EB8.17.703	BLANKET (Mod 5000 ALT SB/9/046)	1	Fibreglass	C	EA13/6	R	
EB8.17.705	BLANKET (Mod 5000 ALT SB/9/046)	1	Fibreglass	C	EA13/7	R	
EB8.17.707	BLANKET (Mod 5000 ALT SB/9/046)	1	Fibreglass	C	EA13/8	R	
EB8.17.709	BLANKET (Mod 5000 ALT SB/9/046)	1	Fibreglass	C	EA13/9	R	
EB8.17.711	BLANKET (Mod 5000 ALT SB/9/046)	1	Fibreglass	C	EA13/10	R	
EB8.17.713	BLANKET (Mod 5000 ALT SB/9/046)	1	Fibreglass	C	EA13/11	R	
EB8.17.715	BLANKET (Mod 5000 ALT SB/9/046)	1	Fibreglass	C	EA13/12	R	
EB8.17.717	BLANKET (Mod 5000 ALT SB/9/046)	1	Fibreglass	C	EA13/13	R	
EB8.17.719	BLANKET (Mod 5000 ALT SB/9/046)	1	Fibreglass	C	EA13/14	R	
	Attachment of insulating blankets to skin between frames 12-13						
Bostik 256	Adhesive (Pre Mod 5000 ALT SB/9/046)	AR	-	C	-	R	
Evostik 528	Adhesive (Mod 5000 ALT SB/9/046)	AR	-	C	-	R	
EA1.17.39	Clip (Pre Mod 5000 ALT SB/9/046)	255	DTD610	C	-	R	
EA1.17.39	Clip (Mod 5000 ALT SB/9/046)	255	DTD610	C	EA13/18	R	
EA1.17.37	Spring (Pre Mod 5000 ALT SB/9/046)	255	Spring Steel	C	-	R	
EA1.17.37	Spring (Mod 5000 ALT SB/9/046)	255	Spring Steel	C	EA13/20	R	
EA1.17.35	BRACKET, angle (Pre Mod 5000 ALT SB/9/046)	54	DTD610	C	-	R	
EA1.17.35	BRACKET, angle (Mod 5000 ALT SB/9/046)	54	DTD610	C	EA13/22	R	
	Attachment of angle bracket to stringer						
SP80/304	Rivet, 3/32 in. dia. (Pre Mod ALT SB/9/046)	1	-	C	-	R	
SP80/304	Rivet, 3/32 in. dia. (Mod 5000 ALT SB/9/046)	AR	-	C	-	R	
EB8.17.435	COVER, camera hatch	1	-	C	EA13/25	R	
EB8.17.163/D	PANEL, insulation	1	-	C	EA13/26	R	
EB8.17.163/K	PANEL, insulation	1	-	C	EA13/27	R	
EB8.17.163/K1	PANEL, insulation	1	-	C	EA13/28	R	
EB8.17.163/L	PANEL, insulation	1	-	C	EA13/29	R	
EB8.17.163/L1	PANEL, insulation	1	-	C	EA13/30	R	
EB8.17.163/M	PANEL, insulation	1	-	C	EA13/31	R	
EB8.17.163/N	PANEL, insulation	1	-	C	EA13/32	R	
EB8.17.163/Q	PANEL, insulation	1	-	C	EA13/33	R	
EB8.17.163/Q1	PANEL, insulation	1	-	C	EA13/34	R	
EB8.17.165/M	PANEL, insulation	2	-	C	EA13/35	R	
EB8.17.165/N	PANEL, insulation	1	-	C	EA13/36	R	
EB8.17.165/O	PANEL, insulation	1	-	C	EA13/37	R	
EB8.17.165/P	PANEL, insulation	1	-	C	EA13/38	R	
EB8.17.165/Q	PANEL, insulation	1	-	C	EA13/39	R	
EB8.17.165/R	PANEL, insulation	1	-	C	EA13/40	R	
EB8.17.165/S	PANEL, insulation	1	-	C	EA13/41	R	
EB8.17.165/T	PANEL, insulation	1	-	C	EA13/42	R	
EB8.17.165/V	PANEL, insulation	1	-	C	EA13/43	R	
EB8.17.165/W	PANEL, insulation	1	-	C	EA13/44	R	
EB8.17.165/X	PANEL, insulation	1	-	C	EA13/45	R	

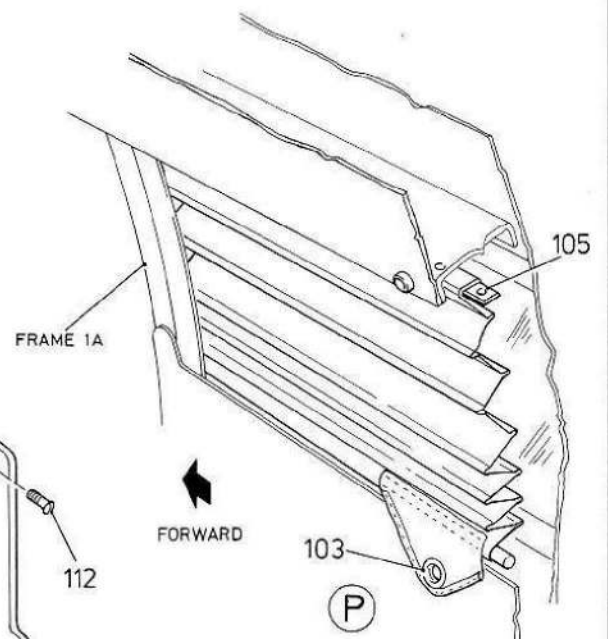
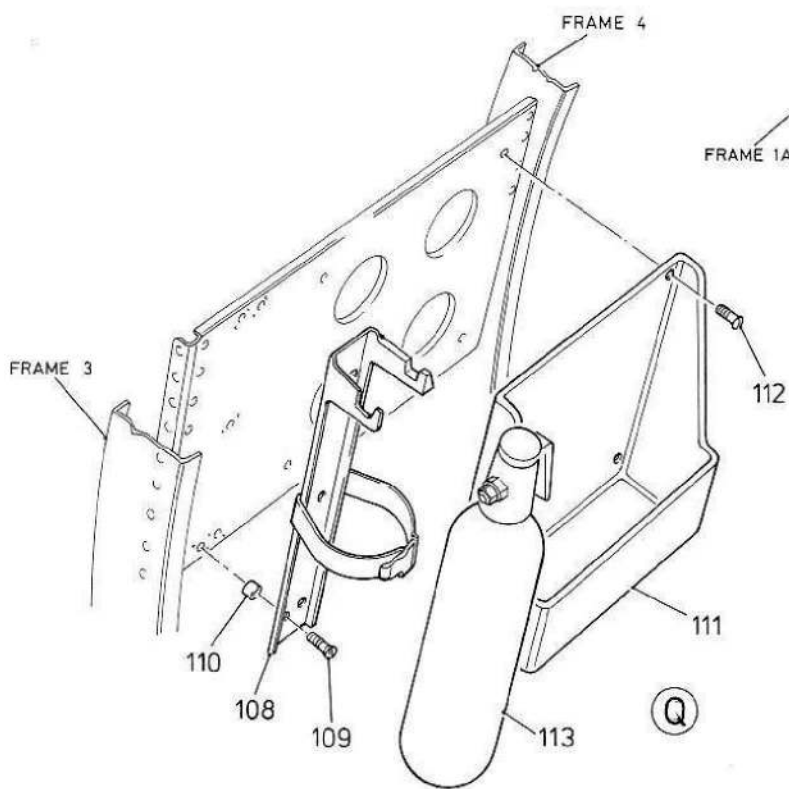
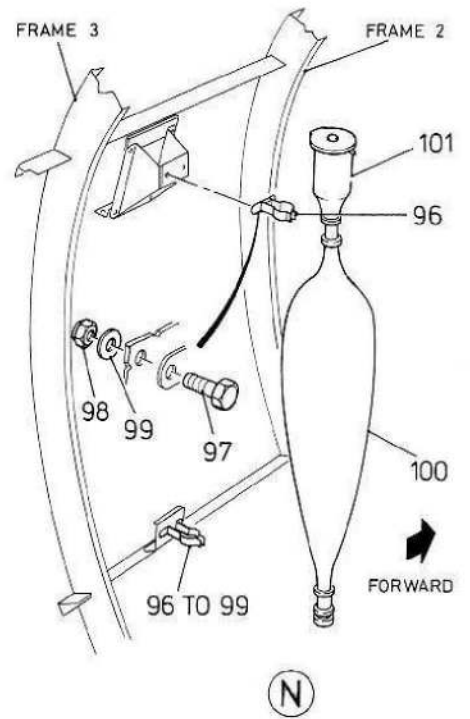
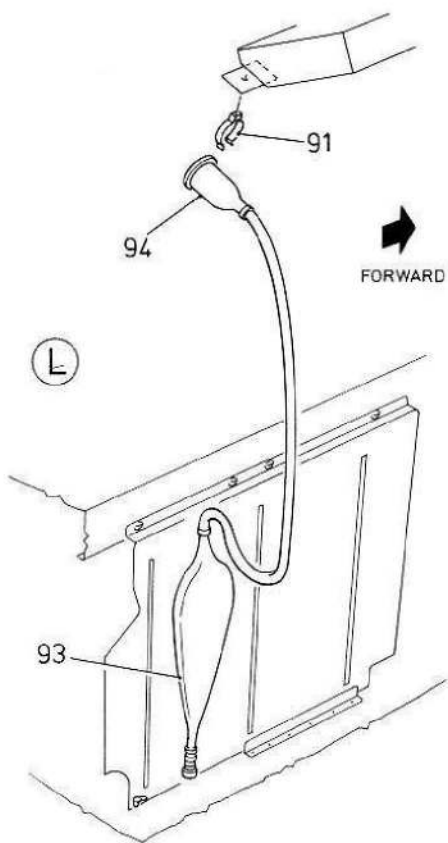


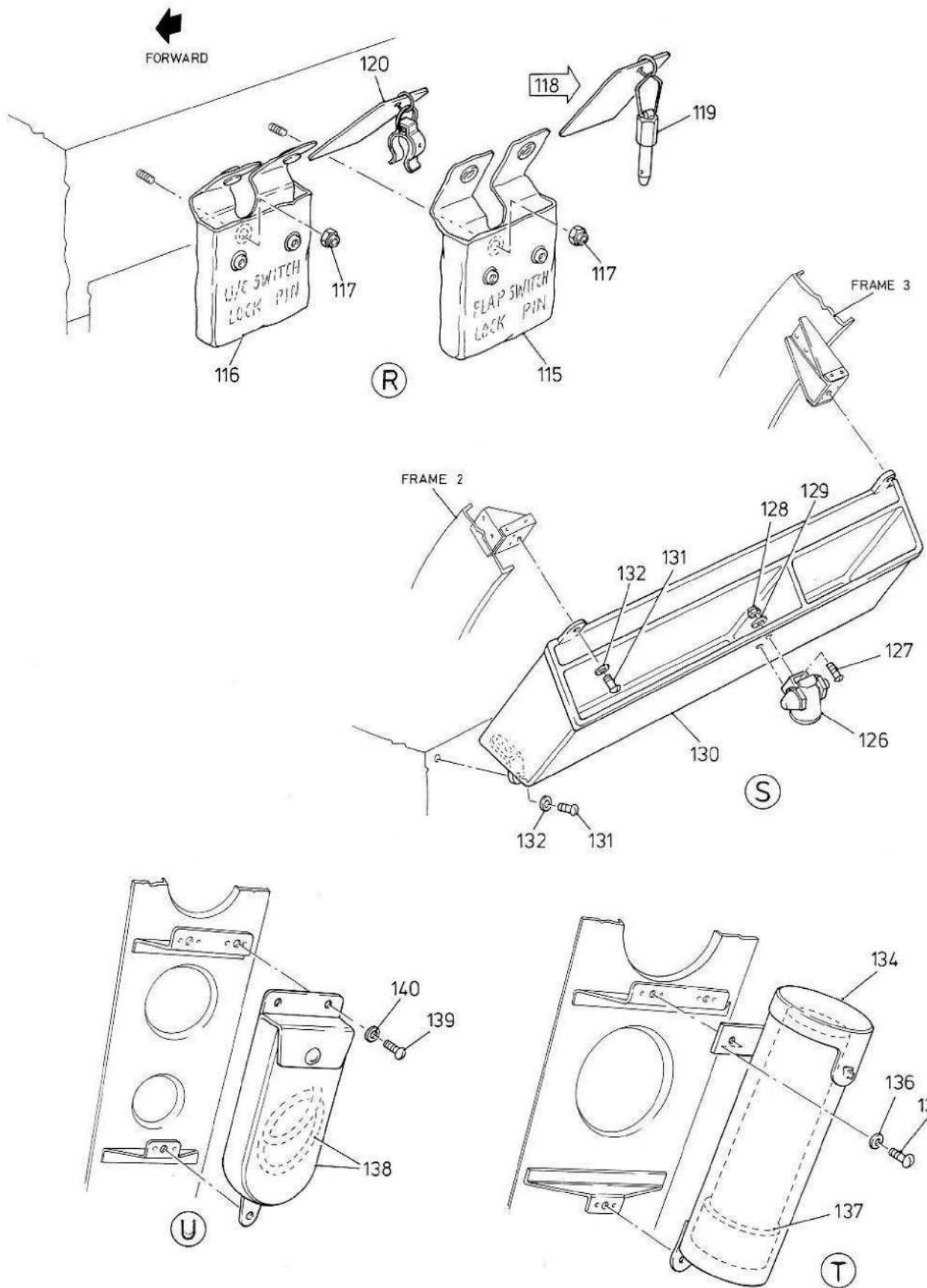
EQUIPMENT  
AIRCRAFT - GENERAL

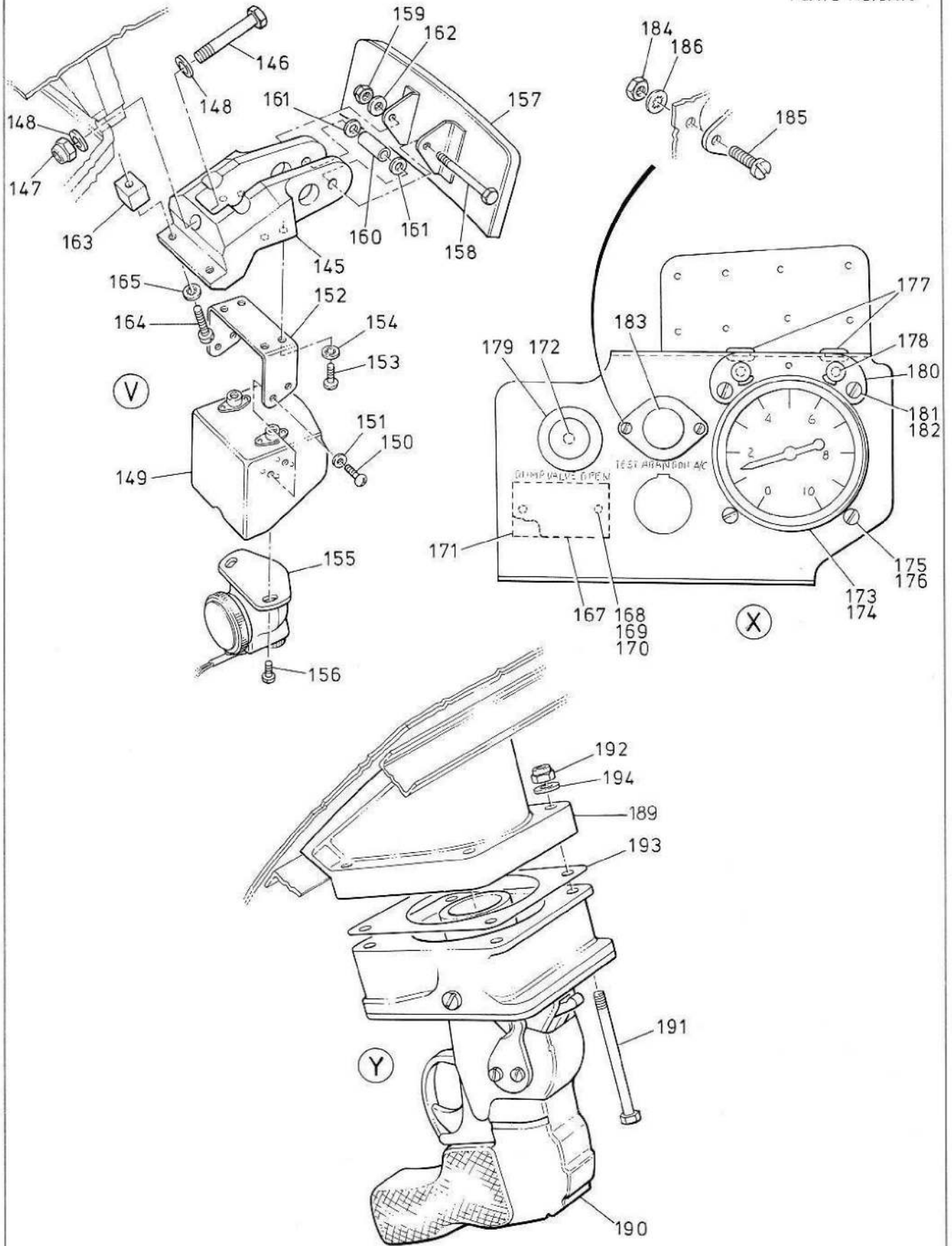
Part No.	Description	No. off	Material Specification	Class of Eqpt M.R. or L.M.	Plate							
						1	2	3	4	5	6	
EB8.17.457	CURTAIN, insulating, frame 31B, group (Mod. 3271)	1	-	L	EA14/26							R
EB8.17.169/A	PAD, insulating	1	-	C	EA14/27							R
EB8.17.169/B	PAD, insulating	1	-	C	EA14/28							R
EB8.17.169/C	PAD, insulating	1	-	C	EA14/29							R
EB8.17.169/D	PAD, insulating	1	-	C	EA14/30							R
EB8.17.169/E	PAD, insulating	1	-	C	EA14/31							R
EB8.17.169/F	PAD, insulating	1	-	C	EA14/32							R
EB8.17.169/G	PAD, insulating	1	-	C	EA14/33							R
EB8.17.169/H	PAD, insulating	1	-	C	EA14/34							R
EB8.17.169/J	PAD, insulating	1	-	C	EA14/35							R
EB8.17.169/K	PAD, insulating	1	-	C	EA14/36							R
EB8.17.169/L	PAD, insulating	1	-	C	EA14/37							R
EB8.17.169/M	PAD, insulating	1	-	C	EA14/38							R
EB8.17.169/N	PAD, insulating	1	-	C	EA14/39							R
EB8.17.169/P	PAD, insulating	1	-	C	EA14/40							R
EB8.17.169/Q	PAD, insulating	1	-	C	EA14/41							R
EB8.17.169/R	PAD, insulating	1	-	C	EA14/42							R
EB8.17.169/S	PAD, insulating	1	-	C	EA14/43							R
	INSULATION, CAMERA BAY, REAR FUSELAGE ASSEMBLY (EB8.17.161)	-	-	-	EA15/1							R
	Spares for:											
EB8.17.141	BAFFLES, in Rear Camera Bay	1	-	-	EA15/2							R
	Spares for:											
EB8.17.143	BAFFLE	1	-	C	EA15/3							R
EB8.17.145	BAFFLE	1	-	C	EA15/4							R
EB8.17.411	CLIP	2	-	C	EA15/5							R
EB8.17.413	CLIP	1	-	C	EA15/6							R
EB8.17.414	CLIP	1	-	C	EA15/7							R
EB8.17.429	LAGGING	1	-	C	EA15/8							R
EB8.17.431	LAGGING	1	-	C	EA15/9							R
EB8.17.433	LAGGING	2	-	C	EA15/10							R
	CURTAIN, Rear Camera Bay, Frames 33-34, Assembly (EB8.17.177)	-	-	-	EA15/11							R
	Consisting of:											
EB8.17.439	CORD, braided rubber (Mod 3271) (Make from Ref. 32C/51)	2	-	LM	EA15/12							R
EB8.17.455	CURTAIN, insulating, rear camera group (Mod 3271)	1	-	L	EA15/13							R
Carr Fastener Co 882	STUD, 3/8 in. long x 2BA	6	-	C	EA15/14							R
EB8.17.187	TUBE, Curtain Support, Port, Group	1	-	C	EA15/15							R
EB8.17.188	TUBE, Curtain Support, Stbd, Group	1	-	C	EA15/16							R
	Spares for:											
Aviation Dev. A409	PIN, "Pip" quick release	2	-	C	EA15/17							R
Carr Fastener Co 883	STUD, double, 3/8 in. long x 2BA	4	-	C	EA15/18							R
	Attachment of stud to support tube											
A27/CT	Nut, thin, 2BA	4	-	C	EA15/19							R
SP18/C	Washer, 2BA	8	-	C	EA15/20							R

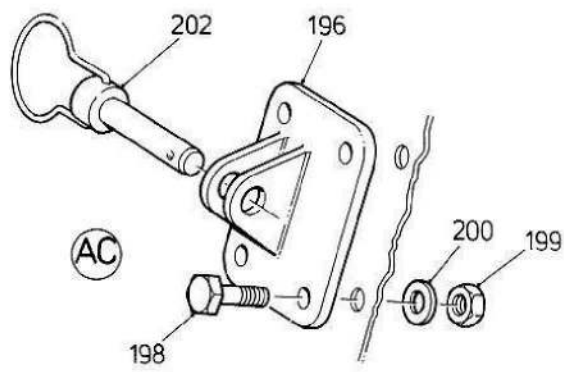
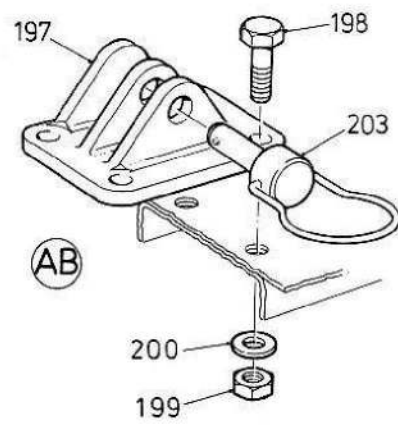
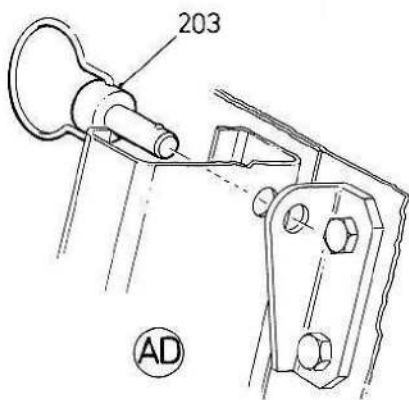
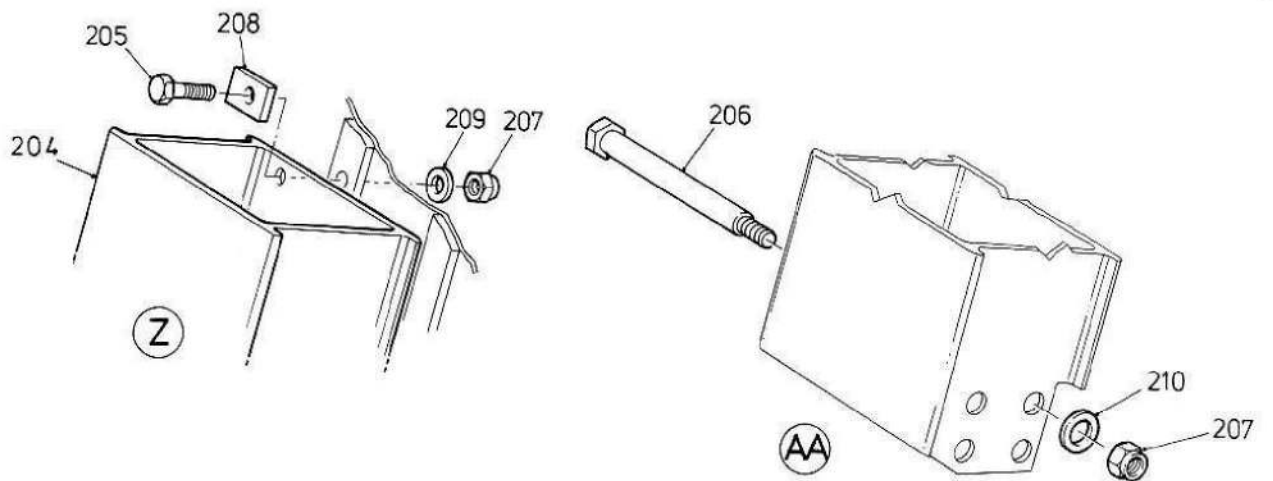


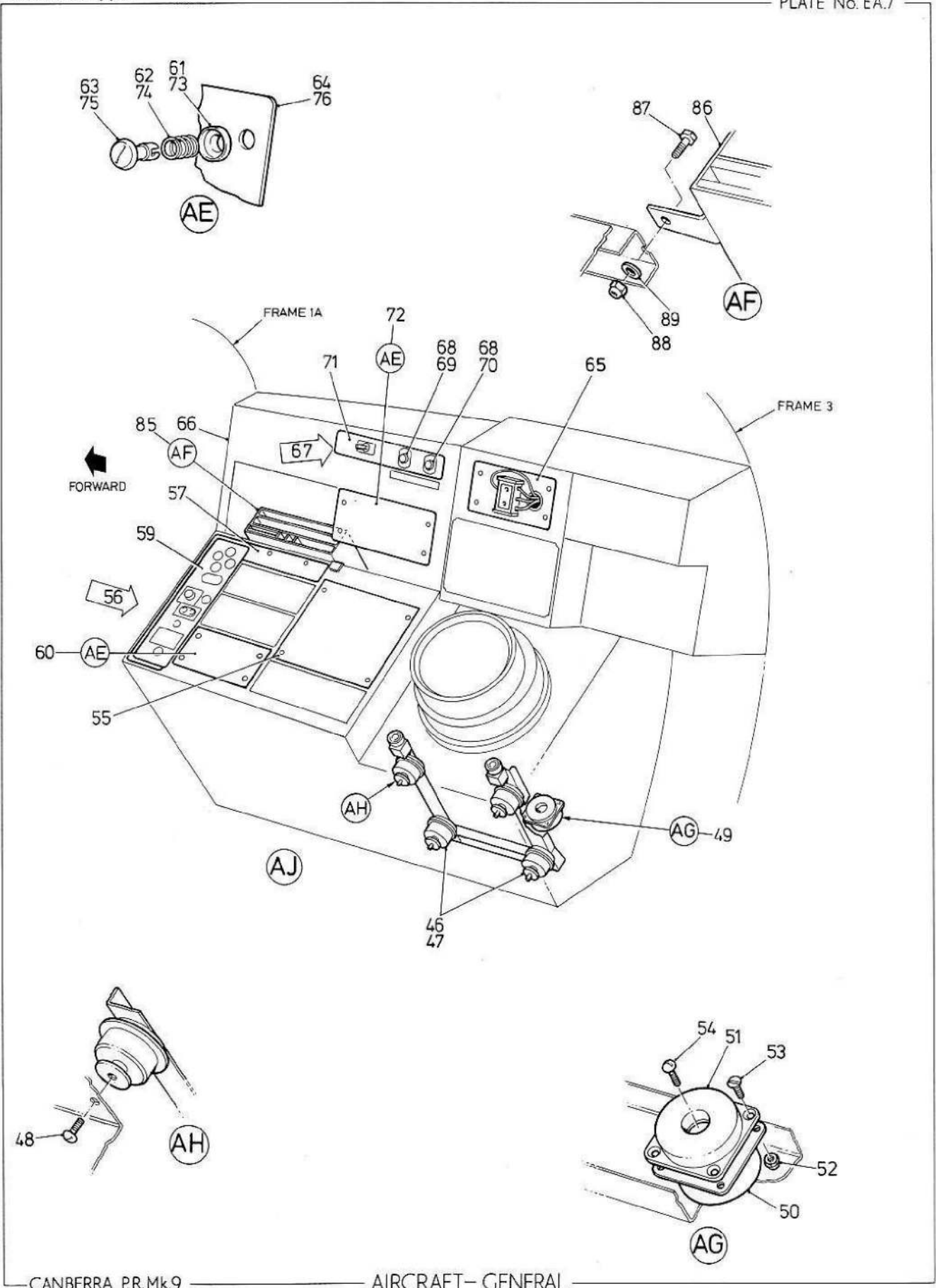


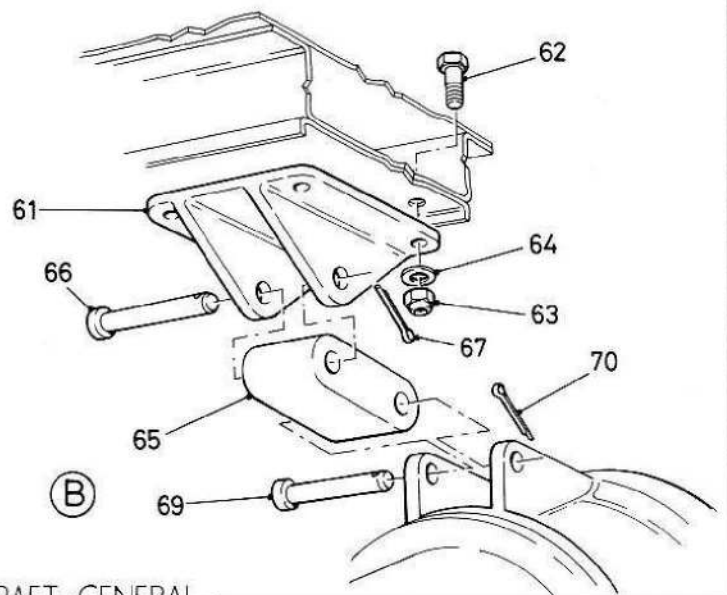
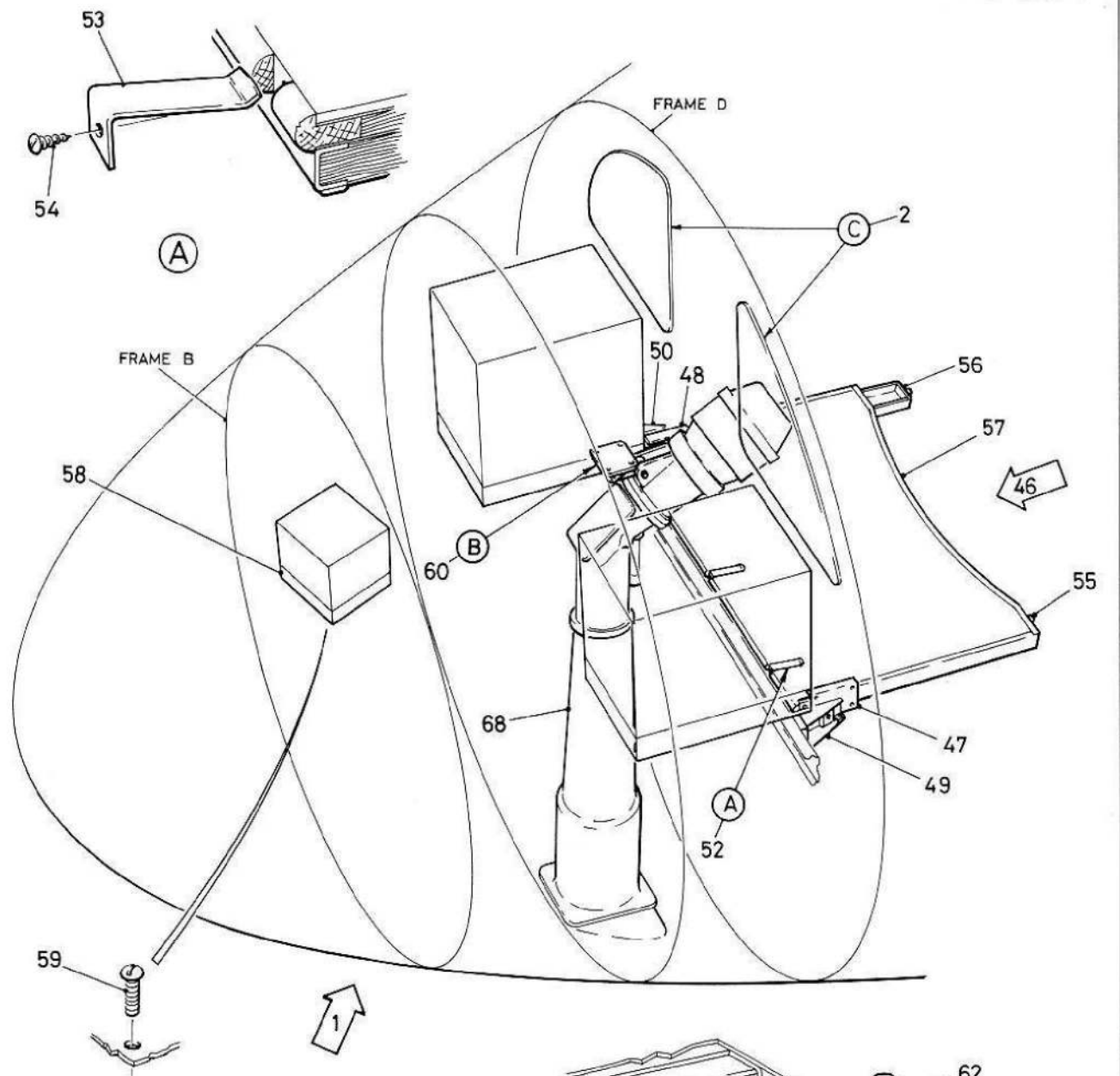


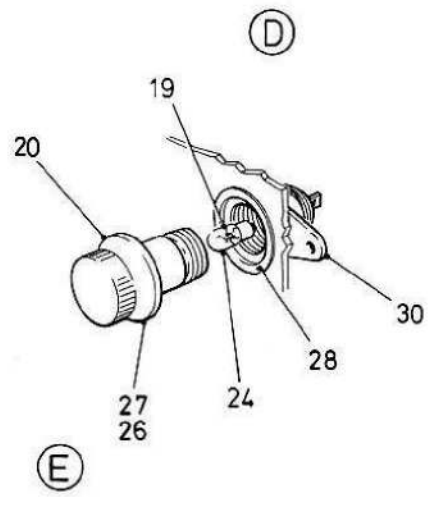
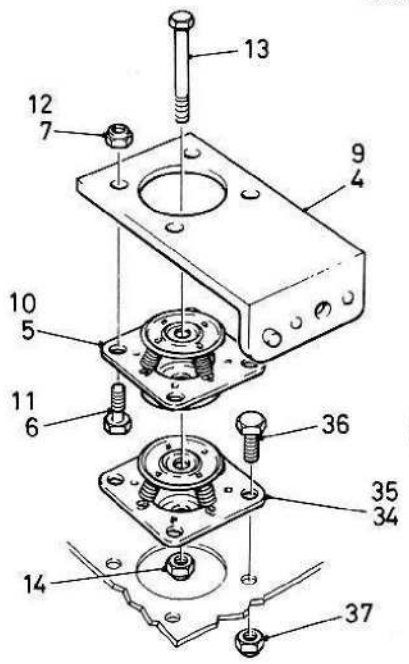
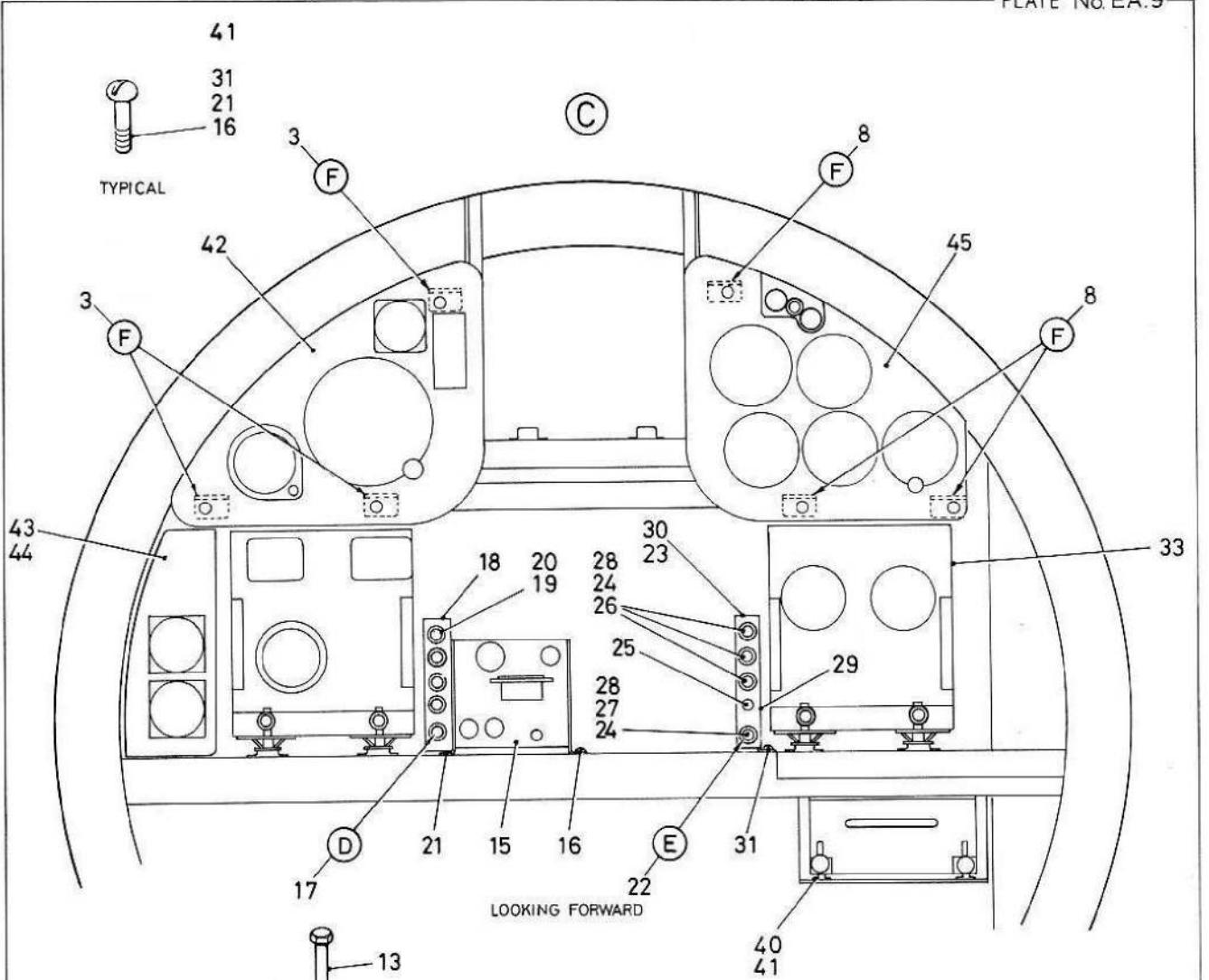


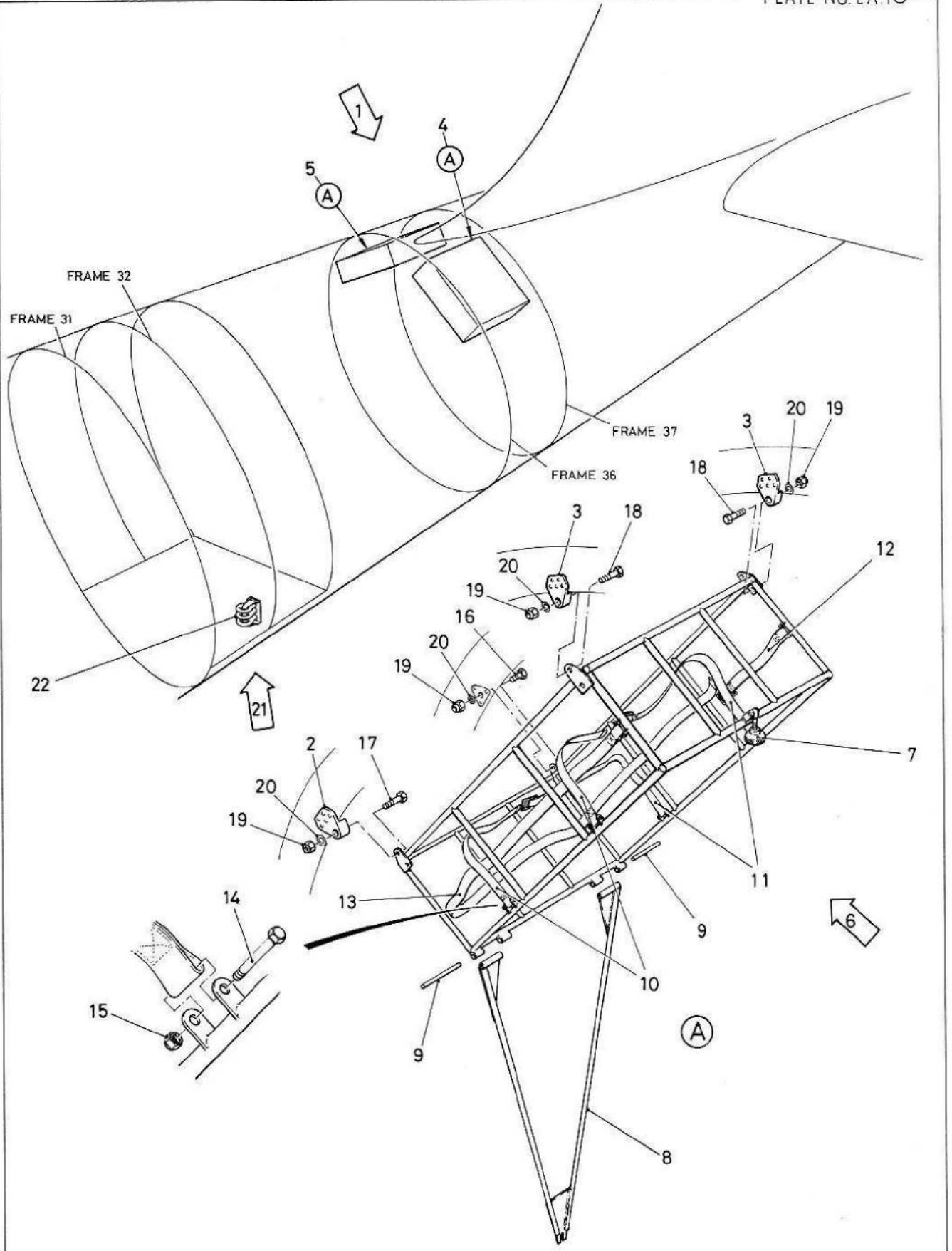


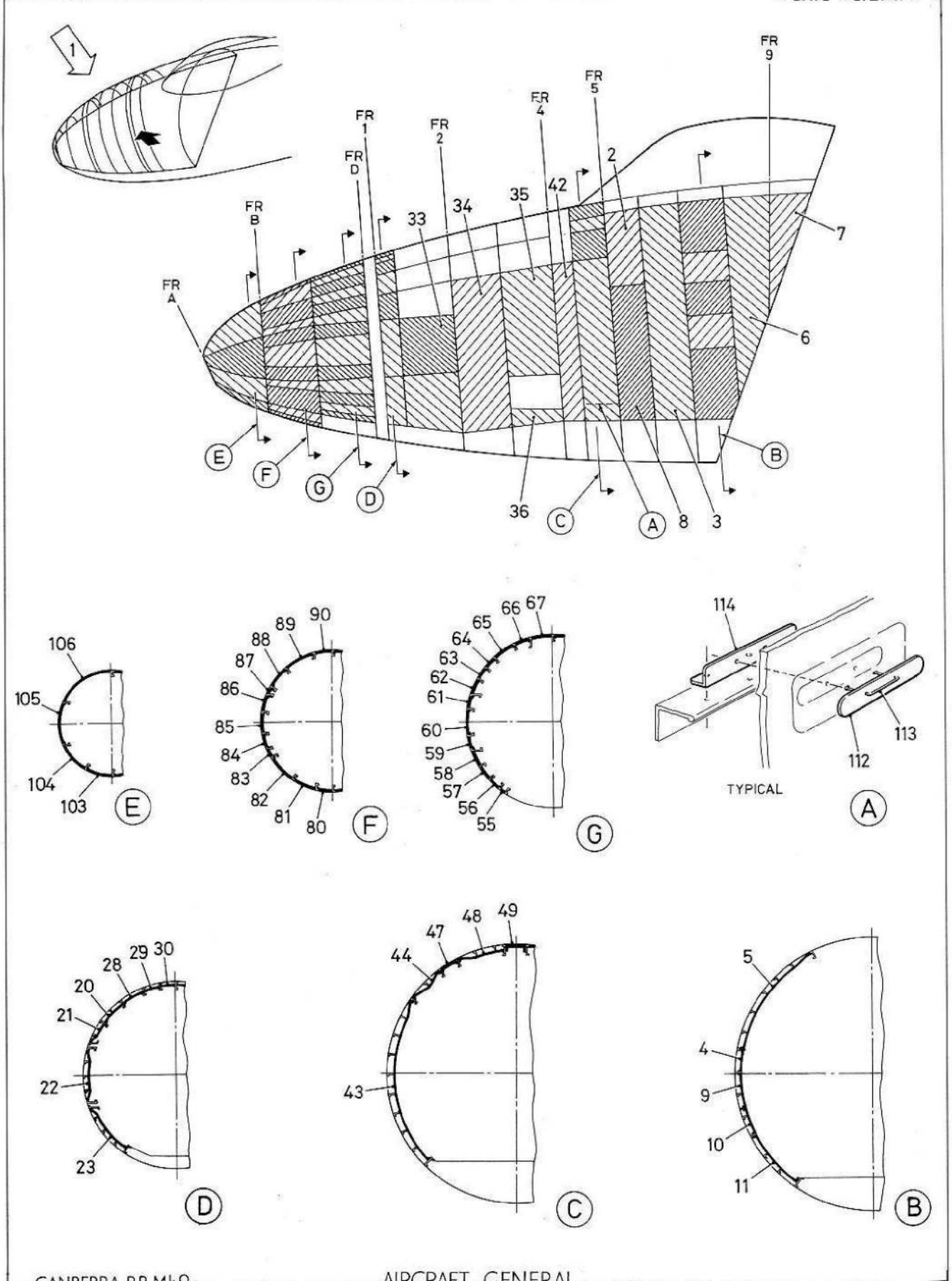


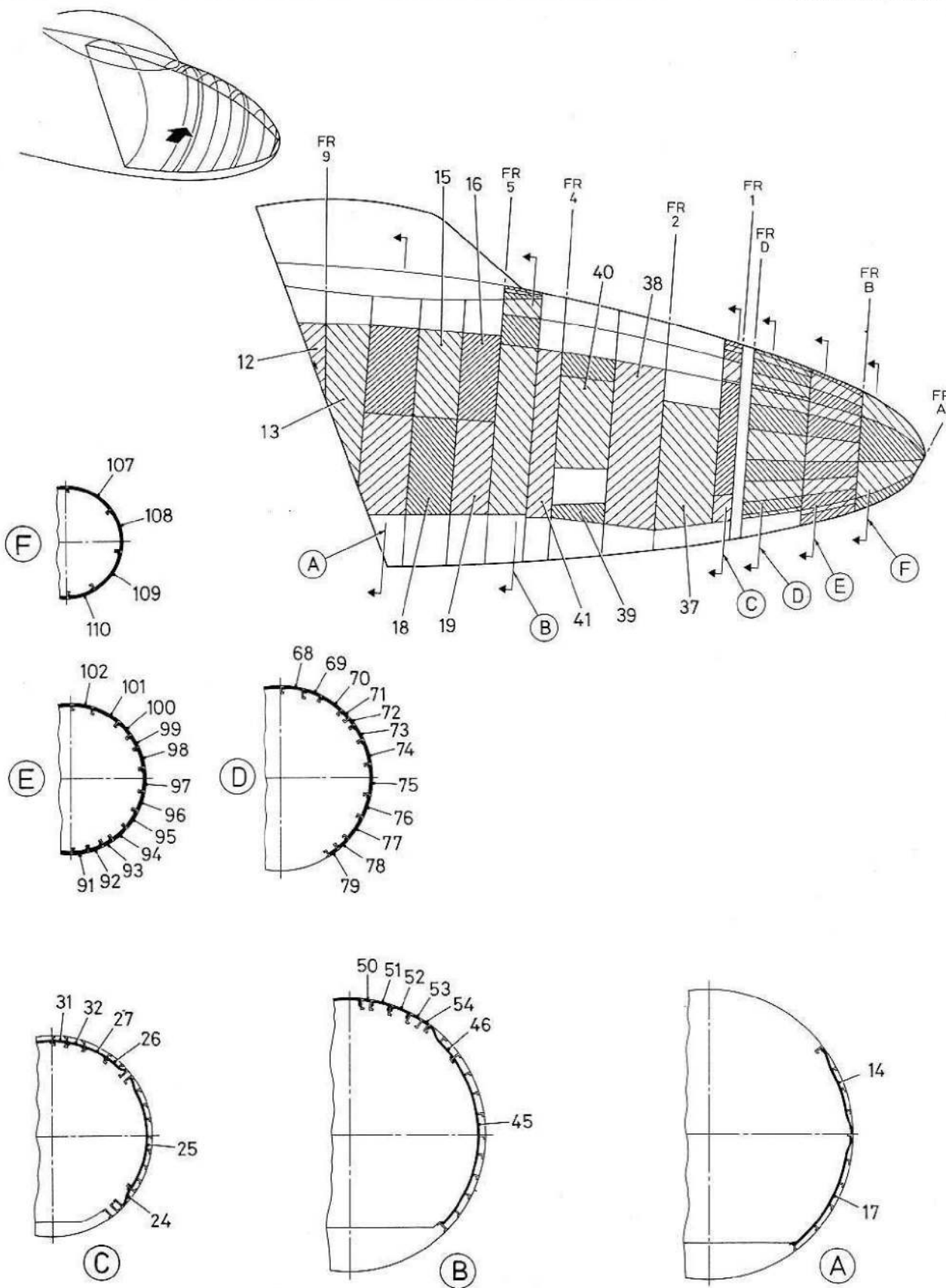


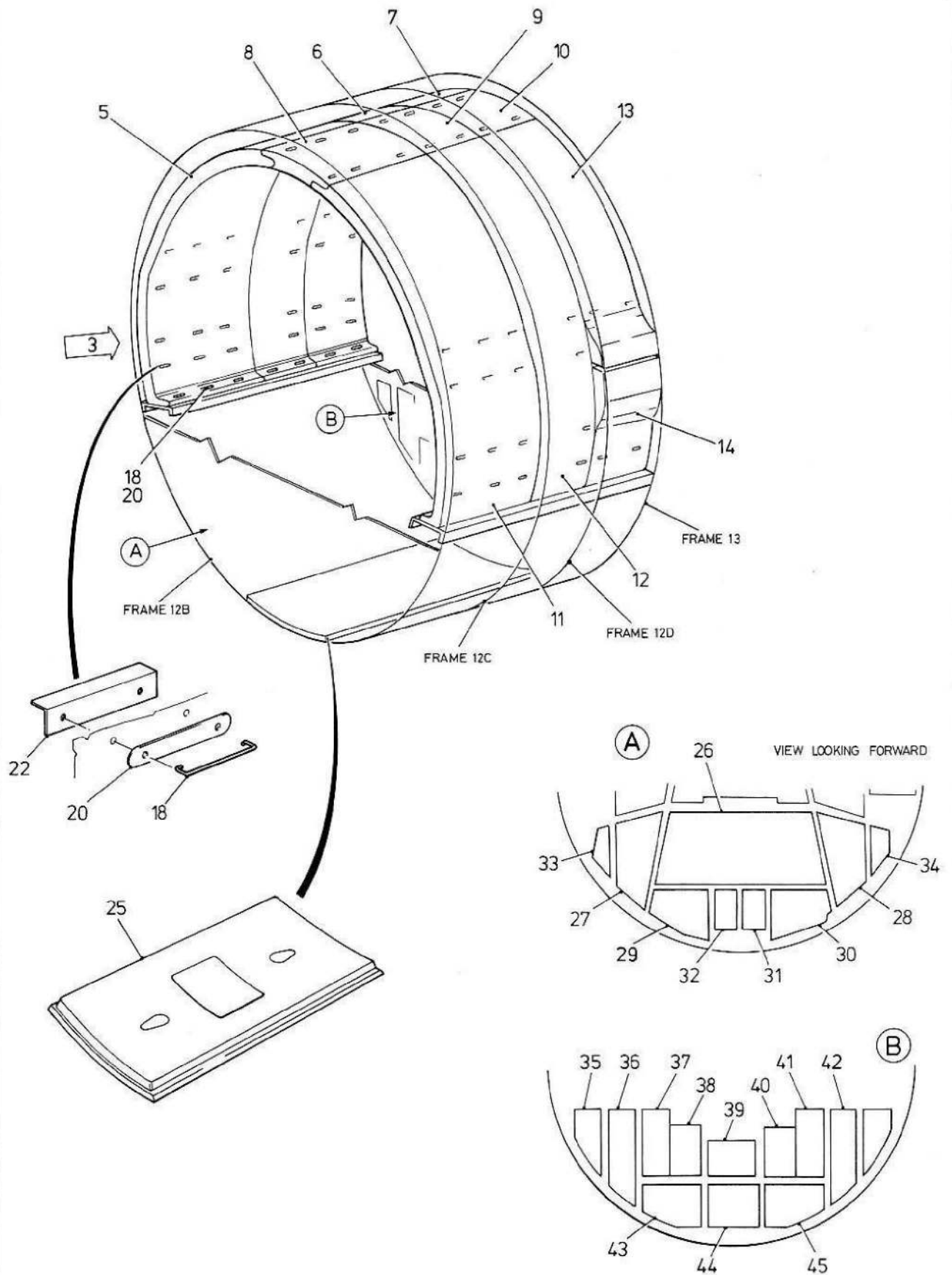


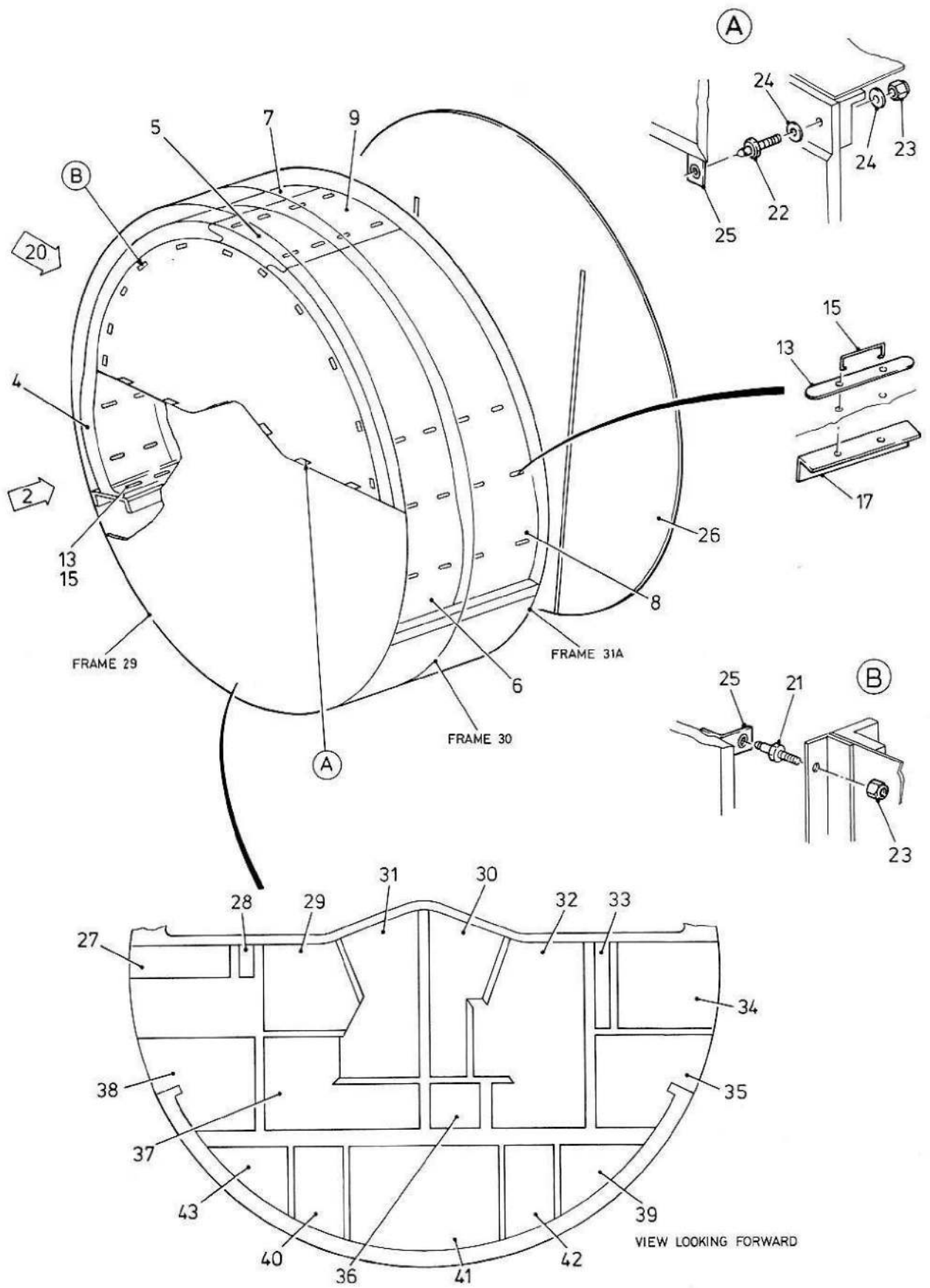


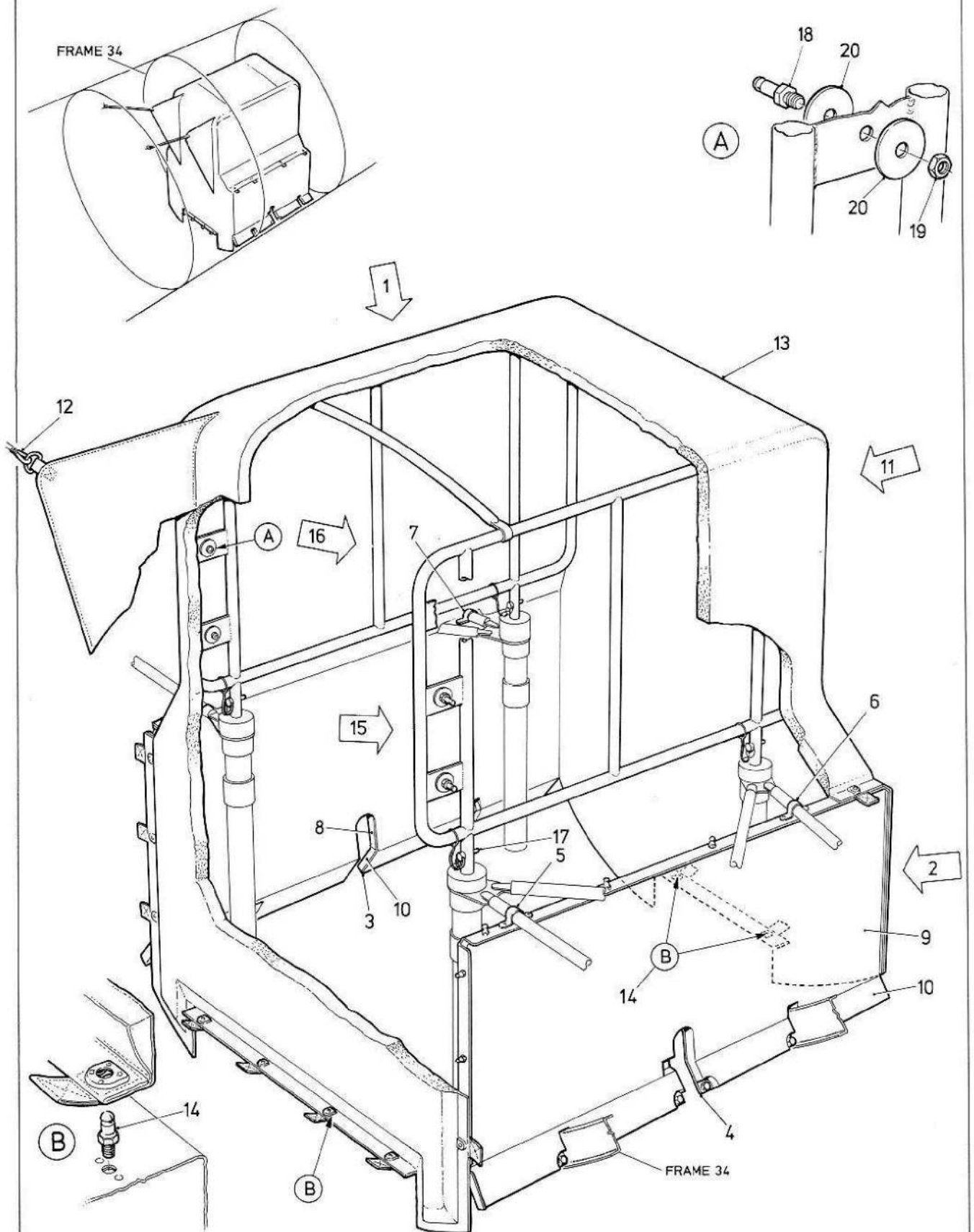












This file was downloaded  
from the RTFM Library.

Link: [www.scottbouch.com/rtfm](http://www.scottbouch.com/rtfm)

Please see site for usage terms,  
and more aircraft documents.

