

EQUIPMENT
GROUND EQUIPMENT

Part No.	Description	No. off	Material Specification	Class of Eqpt M.R. or L.M.	Plate	
	COVERS, AIRCRAFT	-	-	-	-	R
	Consisting of:					
EB8.88.411	COVER, canopy	1	-	L	EC1/30	R
EB8.88.103	COVER, engine, c/w bungs	2	-	L	EC7/31	R
EB8.88.105	COVER, jet pipe, port	1	-	L	EC7/32	R
EB8.88.106	COVER, jet pipe, starboard	1	-	L	EC7/33	R
EA1.88.407	COVER, main wheel	2	-	L	EC5/34	R
EA1.88.409	COVER, nose wheel	2	-	L	EC1/35	R
EB8.88.239	COVER, hinged nose (open)	1	-	L	EC1/36	R
27D/2962	COVER, pressure head	1	-	L	EC1/37	R
	ENGINE/POWER PLANT EQUIPMENT	-	-	-	-	R
	Consisting of:					
4G/4353	ADAPTOR, engine stand	AR	-	P	-	R
40B/1032	ADAPTOR, slinging	AR	-	P	-	R
40B/1147	BOLTS, trunnion	AR	-	L	-	R
4G/5348	SLING, Avon engines, universal	AR	-	P	EC7/41	R
4G/5377	SLING, transit/servicing Stand c/w E.C.U	AR	-	P	-	R
40B/1030	STAND, Avon, universal	AR	-	P	-	R
4G/4858	TROLLEY, servicing, Mk. 2.	AR	-	P	-	R
	HANDLING AND STORAGE EQUIPMENT	-	-	-	-	R
	Consisting of:					
EB8.88.397	BEAM, gantry, type A (4Q/2310 Modified)	2	-	P	EC8/45	R
EA3.88.211	CRADLE, jettisonable wing tank	1	-	P	EC7/46	R
EB8.88.251/A	FORMER, main plane, forward, root, port	1	-	L	EC8/47	R
EA1.88.91/B	FORMER, main plane, centre, root, port (Mod. 3021)	1	-	L	EC8/48	R
EA1.88.91/C	FORMER, main plane, aft, root, port (Mod. 3021)	1	-	L	EC8/49	R
EA1.88.91/D	FORMER, main plane, forward, outer wing, port (Mod. 3021)	1	-	L	EC8/50	R
EA1.88.91/E	FORMER, main plane, centre, outer wing, port (Mod. 3021)	1	-	L	EC8/51	R
EA1.88.91/F	FORMER, main plane, aft, outer wing, port (Mod. 3021)	1	-	L	EC8/52	R
EB8.88.252/A	FORMER, main plane, forward root, Stbd.	1	-	L	EC8/53	R
EA1.88.92/B	FORMER, main plane, centre root, Stbd.	1	-	L	EC8/54	R
EA1.88.92/C	FORMER, main plane, aft root, Stbd	1	-	L	EC8/55	R
EA1.88.92/D	FORMER, main plane, forward, outer wing Stbd	1	-	L	EC8/56	R
EA1.89.92/E	FORMER, main plane, centre, outer wing, stbd	1	-	L	EC8/57	R
EA1.89.92/F	FORMER, main plane, aft outer wing, Stbd	1	-	L	EC8/58	R
EB8.88.241	STAND, installation/storage, hinged nose	1	-	P	EC2/59	R
EA2.88.35	TROLLEY, Ventral Tank	1	-	P	EC3/60	R
	Spares for:					
EA2.88.53	WHEEL, trolley (Capowheel T.82)	4	-	P	EC3/61	R
EA1.88.85	TROLLEY, Pressure Cabin Ground Maintenance	1	-	P	EC1/62	R
	Spares for:					
4GB/2451	BODY, jacking	4	-	P	EC1/63	R
EA2.88.53	WHEEL, trolley (Capowheel T.82)	4	-	P	EC1/64	R

EQUIPMENT
GROUND EQUIPMENT

Part No.	Description	No. off	Material Specification	Class of Eqpt M.R. or L.M.	Plate							
						1	2	3	4	5	6	
4Q/2309	UPRIGHT, gantry, type A	4	-	P	-							R
	JACKING EQUIPMENT	-	-	-	-							R
	Consisting of:											
	MAIN WING JACKING	-	-	-	-							R
EA1.88.257	ADAPTOR, head, Mk 48	2	-	P	EC5/66							R
4Q/2625	BODY, jacking, hydraulic, 10 ton	2	-	P	EC5/67							R
4Q/2652	TRESTLE, Mk. 1, 10 ton	2	-	P	EC5/68							R
4Q/2659	TROLLEY, transporting	1	-	P	-							R
	MAIN WHEEL CHANGING	-	-	-	-							R
	Consisting of:											
EA9.88.39	ADAPTOR, jacking	2	-	P	EC6/70							R
4Q/2321	ADAPTOR, head, Mk. 27	2	-	P	EC5/71							R
EA3.88.307	BRACKET, main wheel changing	2	-	P	EC5/72							R
4Q/2657	JACK, hydraulic, pillar, 15 ton	2	-	P	EC5/73							R
4Q/2666	TROLLEY, transporting	1	-	P	-							R
	NOSE JACKING	-	-	-	-							R
	Consisting of:											
EA1.88.77	ADAPTOR, head, Mk. 49	2	-	P	EC2/75							R
4Q/2232	BODY, jacking, hydraulic, 5 ton	2	-	P	EC1/76							R
EA1.88.23	SPIGOT, nose jacking	2	-	P	EC2/77							R
4Q/2266	TRESTLE, Mk. 2, 5 ton	2	-	P	EC1/78							R
4Q/2288	TROLLEY, transporting	1	-	P	-							R
	MISCELLANEOUS EQUIPMENT	-	-	-	-							R
	Consisting of:											
4G/2169	FOOTSTEP, entrance, crew, hinged nose	1	-	P	-							R
EB8.88.13	GUARD, safety engine nacelle	2	-	L	EC7/81							R
	Spares for:											
EA3.88.295	BOLT, key	2	-	C	EC8/82							R
28X/19630	CABLE, 5 Cwt	AR	6W2	C	EC8/83							R
EA3.88.271	SPRING	2	-	C	EC8/84							R
EB8.88.207	LADDER, Cockpit Entrance, Group	1	-	P	EC6/85							R
	Spares for:											
EB8.88.317	SPRING	2	DTD215	C	EC6/86							R
EA1.88.255	PIN, Locking, Nosewheel, Group	1	-	L	EC1/87							R
	Spares for:											
Aviation Dev. A1031	PIN, "Pip", quick release	1	-	C	EC2/88							R
EA3.88.281	PLUG, blanking, cabin pressure control valve	1	-	L	EC2/89							R
6A/2679	PLUG, protective, static vent	4	-	L	-							R
EB8.88.373	RETAINER, control column	1	-	C	EC1/91							R
EA1.40.169	RING, picketing	5	S11	C	EC3/92							R
EB8.88.1	PLATE, Blanketing Air Intake Group	2	-	P	EC7/93							R
EB8.88.353	BRACKET, retaining L.H.	1	-	L	EC8/94							R

EQUIPMENT
GROUND EQUIPMENT

Part No.	Description	No. off	Material Specification	Class of Eqpt M.R. or L.M.	Plate	
EB8.88.354	BRACKET, retaining R.H.	1	-	L	EC8/95	R
EB8.88.355	BUNG, engine starter vent	2	-	C	EC8/96	R
EA1.88.743	SLEEVE, Main Undercarriage Wheel Locking	2	-	P	EC6/97	R
	Spares for:					
Aviation Dev. A817	PIN, "Pip" quick release	4	-	C	EC6/98	R
EB6.88.81	STRAP, inner, Integral Tank	2	-	L	EC7/99	R
	Spares for:					
EB6.88.119	BOLT, c/w chain	6	-	C	EC9/100	R
EB6.88.121	BOLT, c/w chain	6	-	C	EC9/101	R
EB6.88.47	BRACKET, guide	2	-	C	EC9/102	R
EB6.88.83	STRAP, outer, Integral tank	2	-	L	EC9/103	R
EA1.88.799	STRUT, jury, tailplane	1	-	P	EC4/104	R
	RIGGING EQUIPMENT	-	-	-	-	R
	Consisting of:					
EA1.88.93	GAUGE, incidence and dihedral, mainplane	1	-	P	EC7/105	R
EA3.88.179	GAUGE, incidence and dihedral, tailplane	1	-	P	EC5/106	R
EA9.88.63	GAUGE, levelling, centre fuselage, longitudinal	1	-	P	EC3/107	R
EB8.88.340	GAUGE, levelling, centre fuselage, lateral	1	-	P	EC3/108	R
EB8.88.243	GAUGE, levelling, cockpit lateral	1	-	P	EC1/109	R
EB8.88.245	GAUGE, levelling, cockpit, longitudinal	1	-	P	EC1/110	R
EA9.45.477/58/1	JIG, rudder setting and measuring	1	-	P	EC5/111	R
	PLATES, Throttle Control Setting (EB8.88.389)	-	-	-	-	R
	Consisting of:					
EB8.88.333	INDICATOR, engine	2	DTD511	C	EC10/113	R
EB8.88.421	PLATE, setting	2	DTD511	C	EC10/114	R
EB8.88.423	PLATE, setting, starboard engine	1	DTD511	C	EC10/115	R
EB8.88.425	PLATE, setting, port engine	1	DTD511	C	EC10/116	R
EB8.88.335	PLATE, throttle box	1	DTD511	C	EC10/117	R
EA9.88.529	TEMPLATE, rigging, aileron	1	-	P	EC9/118	R
EA9.88.527	TEMPLATE, rigging, rudder and elevator	1	-	P	EC3/119	R
	SLINGING EQUIPMENT	-	-	-	-	R
	Consisting of:					
EB8.88.253	BRIDGE, Detachable, Main Plane Slings Group	1	-	P	EC7/120	R
	Spares for:					
EB8.88.345	BEARING, spherical	2	S11	C	EC9/121	R
	Attachment of bearing to bridge					
EA1.51.19	Pin	2	S11	C	EC9/122	R

EQUIPMENT
GROUND EQUIPMENT

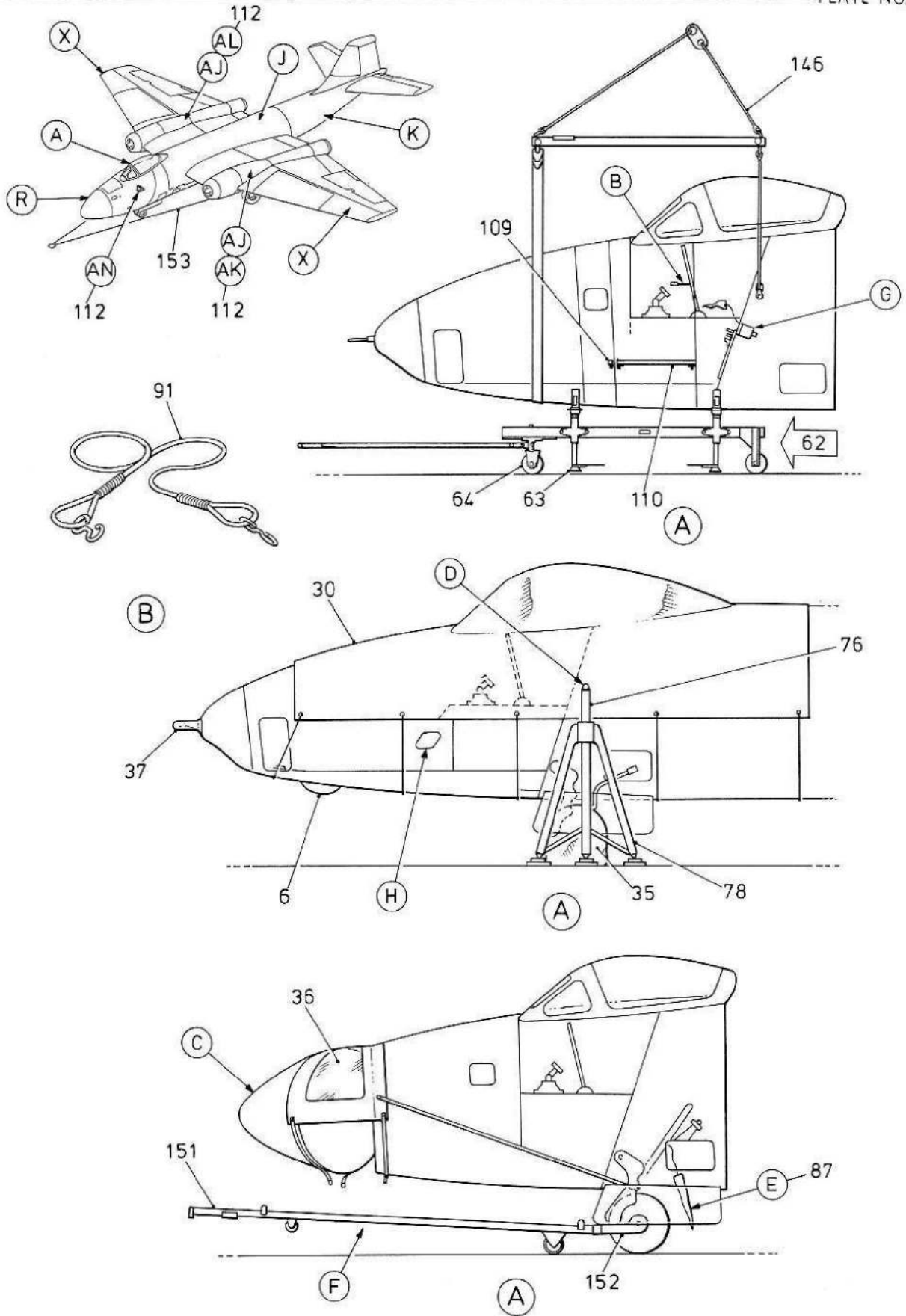
Part No.	Description	No. off	Material Specification	Class of Eqpt M.R. or L.M.	Plate						
						1	2	3	4	5	6
EA1.88.785	GEAR, lifting, complete aircraft	1	-	P	EC5/123						
EA1.88.61	SLING, centre fuselage lifting	1	-	P	EC3/124						
EA1.88.65	SLING, rear fuselage lifting	1	-	P	EC3/125						
EA1.88.11	SLING, and frame, main plane lifting (Pre Mod 5224)	1	-	P	-						
EA1.88.919	SLING and frame main plane lifting (Mod 5224)	1	-	P	EC7/127						
EA1.88.13	Bolt and nut (Pre Mod 5224)	3	-	C	-						
EA1.88.925	Bolt and nut (Mod 5224)	3	-	C	EC7/129						
EA1.88.11/P	Bolt (Pre Mod 5224)	6	-	C	-						
EA1.88.929	Bolt (Mod 5224)	6	-	C	EC7/131						
EA1.88.11/M	Bolt (Pre Mod 5224)	3	-	C	-						
EA1.88.931	Bolt (Mod 5224)	3	-	C	EC7/133						
EA1.88.15	Hook (Pre Mod 5224)	1	-	C	-						
EA1.88.927	Hook (Mod 5224)	1	-	C	EC7/135						
EA1.88.495	Plate, instruction (Pre Mod 5224)	1	-	C	-						
EA1.88.933	Label, ident (Mod 5224)	1	-	C	EC7/137						
EA1.88.21	Ring (Pre Mod 5224)	3	-	C	-						
EA1.88.923	Ring (Mod 5224)	3	-	C	EC7/139						
EA1.88.19	Shackle (Pre Mod 5224)	6	-	C	-						
EA1.88.921	Shackle (Mod 5224)	6	-	C	EC7/141						
EA1.88.59	SLING, tail plane	1	-	P	EC5/142						
EA1.88.601	SLING, fin and rudder	1	-	P	EC3/143						
EB6.88.39	SLING, integral Tanks	1	-	P	EC7/144						
Spares for:											
EB6.88.57	EYE-BOLT	3	S82	C	EC9/145						
EA9.88.83	SLING, front fuselage lifting	1	-	P	EC1/146						
EB8.88.179	SLING, generator	1	-	P	EC6/147						
EB8.88.247	SLING, nose and centre fuselage	1	-	P	EC3/148						
EB8.88.249	STRAP, metal for use with combined nose and centre fuselage sling	1	-	L	EC3/149						
TOWING AND STEERING EQUIPMENT											
Consisting of:											
EA3.88.157	ARM, steering	1	-	P	EC2/150						
4GB/2792	ARM, towing	1	-	P	EC1/151						
EA3.88.15	ATTACHMENT, nose towing bar	1	-	P	EC1/152						
4GB/4139	BRIDLE, towing	1	-	P	EC1/153						
TRANSPORTATION EQUIPMENT											
41G/SAL/306	BEAM AND BLOCKS, MAIN PLANE TRANSPORTATION	-	-	-	-						
Consisting of:											
4GB/2660	ADAPTOR, universal trestle No. 2	6	-	L	-						
43G/SAL/195	BEAM, 4in. x 3in. x 16ft. long	1	RSJ	L	-						
41G/SAL/302	BLOCK, front	1	Ash	L	-						
95288	BLOCK, centre (43G/SAL/185)	1	Ash	L	-						
95287	BLOCK, rear (43G/SAL/185)	1	Ash	L	-						
4GB/2996	STOP PLATE	6	-	L	-						
41G/SAL/297	CLAMP PLATE, front, No 2 universal trestle, front and mid section transportation LH and RH	1 set	MS	L	-						

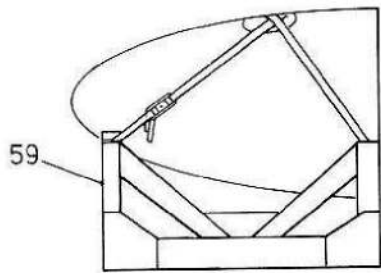
EQUIPMENT
GROUND EQUIPMENT

Part No.	Description	No. off	Material Specification	Class of Eqpt M.R. or L.M.	Plate	
41G/SAL/298	CLAMP PLATE, front, No 2 universal trestle, front and mid section transportation LH and RH	1 set	MS	L	-	R
	TRESTLING EQUIPMENT	-	-	-	-	R
	Consisting of:					
EAL.88.417	CRADLE, front, rear fuselage	1	-	P	EC3/163	R
EAL.88.419	CRADLE, rear, rear fuselage	1	-	P	EC3/164	R
EAL.88.87A	FORMER, front, rear fuselage	1	-	L	EC3/165	R
EAL.88.87B	FORMER, rear, rear fuselage	1	-	L	EC3/166	R
	TRESTLE, Universal Jacking, No 1	1	-	P	-	R
	Consisting of:					
29A/539	BOLT, 5/8 in. whit	8	-	C	-	R
29A/549	BOLT, 5/8 in. whit	2	-	C	-	R
4GB/795	BRACKET, beam	1	-	L	-	R
4GB/2456	BRACKET, beam	1	-	L	-	R
4GB/2451	JACK, trestle, body	2	-	P	-	R
4GB/801	MEMBER, frame, legs	4	-	L	-	R
4GB/802	MEMBER, frame, bottom rails	2	-	L	-	R
4GB/803	MEMBER, frame, lower diagonal stay	2	-	L	-	R
4GB/1475	MEMBER, frame, top rails	2	-	L	-	R
29A/1234	NUT, 5/8 in. whit	4	-	C	-	R
4G/	TRESTLE, Universal Jacking. No. 7	1	-	P	-	R
	Consisting of:					
29A/539	BOLT, 5/8 in. whit	12	-	C	-	R
29A/549	BOLT, 5/8 in. whit	2	-	C	-	R
4GB/795	BRACKET, beam	1	-	L	-	R
4GB/2456	BRACKET, beam	1	-	L	-	R
4GB/2451	JACK, trestle, body	2	-	P	-	R
4GB/801	MEMBER, frame legs	4	-	L	-	R
4GB/802	MEMBER, frame, lower cross stay	2	-	L	-	R
4GB/803	MEMBER, frame, bottom rails	2	-	L	-	R
3GB/805	MEMBER, frame, lower diagonal stay	2	-	L	-	R
4GB/1476	MEMBER, frame, top rails	2	-	L	-	R
29A/1234	NUT, 5/8 in. whit	18	-	C	-	R
	SPECIAL TOOLS	-	-	-	-	R
	Consisting of:					
4G/4864	CAN, fluid replenishing	1	-	P	-	R
Dunlop						
AC0.5928	CLAMP, hydraulic gauge priming	1	-	L	-	R
A63000	EXTRACTOR, and assembly tool for wheels	1	-	L	-	R
EAL.88.359	EXTRACTOR, wing to fuselage pick up pins	1	-	L	EC11/193	R
EAL.88.375	EXTRACTOR, tab torque tube lever aileron	1	-	L	EC11/194	R
EAL.88.825	EXTRACTOR, aileron hinge pin	1	-	L	EC11/195	R
A10056	FIXTURE, hydraulic brake alignment	1	-	P	-	R
6A/4339632	GAUGE, pressure, cabin seals inflation	1	-	L	-	R
1B/4467	GUN, lubricating, shock absorber charging	1	-	P	-	R
4F/1041538	INFLATOR, cabin seals	1	-	P	-	R
EAL.88.349	INSERTER, piston ring, main undercarriage oleo leg	1	-	P	EC11/200	R

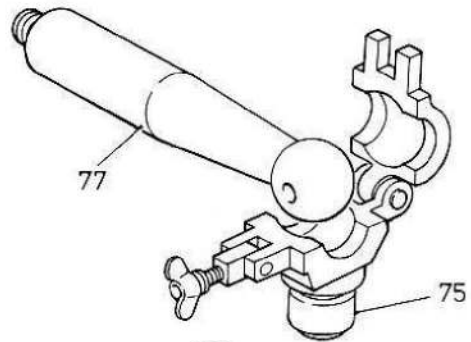
EQUIPMENT
GROUND EQUIPMENT

Part No.	Description	No. off	Material Specification	Class of Eqpt M.R. or L.M.	Plate							
						1	2	3	4	5	6	
EA1.88.363	INSERTER, wing to fuselage pick up pins	1	-	P	EC11/201							R
EA1.88.383	INSERTER, main oleo pivot point bush	1	-	P	EC11/202							R
EA1.88.389	INSERTER, bushes in torque links, main oleo leg	1	-	P	EC11/203							R
EA1.88.391	INSERTER, and extractor, sealing rings, main oleo leg	1	-	P	EC11/204							R
EA1.88.733	INSERTER, main undercarriage pivot pin	1	-	P	EC11/205							R
FT8.2571	JIG, fuel vent outlet	1	-	P	-							R
Dowty D2606Y	NOZZLE, flexible, c/w gauge	1	-	P	-							R
1C/2161	SCREWDRIVER, generator cooling duct	1	-	L	-							R
1L/9106397	SOCKET, 3/4 in. BSF attachment bolt	1	-	L	-							R
1L/9106401	SOCKET, 1 in. BSF, attachment bolt	1	-	L	-							R
EA3.88.135	SPANNER, main undercarriage oleo axle clamp	1	-	L	EC11/211							R
EA3.88.293	SPANNER, wing tip tank drain plug	1	-	C	EC11/212							R
EA3.88.303	SPANNER, main undercarriage oleo bearing ring	1	-	L	EC11/213							R
EA1.88.877	SPANNER, nosewheel door uplock release	1	-	L	EC11/214							R
EA1.88.345	SPANNER, torque link, main undercarriage screw	1	-	C	EC12/215							R
EA1.88.347	SPANNER, main undercarriage oleo stop nut	1	-	L	EC12/216							R
EA1.88.353	SPANNER, main undercarriage oleo piston	1	-	L	EC12/217							R
EA1.88.365	SPANNER, plug, forward jacking point housing	1	-	L	EC12/218							R
EA1.88.379	SPANNER, universal, aileron centre hinge bracket attachment	1	-	L	EC12/219							R
EA1.88.385	SPANNER, undercarriage pivot pin	1	-	L	EC12/220							R
EA1.88.387	SPANNER, undercarriage pivot nut	1	-	L	EC12/221							R
EA1.88.531	SPANNER, drop tank explosive bolts	1	-	C	EC12/222							R
EA1.88.749	SPANNER, front and rear crutch	1	-	C	EC12/223							R
EB7.88.203	SPANNER, fuel pump pipe, integral, tank	1	-	L	EC12/224							R
AS130	SPANNER, wing tip tank filler cap	1	-	L	-							R
1C/3226	SPANNER, union, main fuel feed	1	-	L	-							R
EB8.88.57	SPANNER, box, ventral tank fuel filler neck	1	-	L	EC12/227							R
EA1.88.351	TOOL, shock absorbing piston centralising	1	-	P	EC12/228							R
EA1.88.361	TOOL, combination, main undercarriage oleo insertion and extraction of spherical bearing	1	-	C	EC12/229							R
TS47/28 OR	TOOL, counter sinking 3/4 in.	1	-	L	-							R
1546-0615	TOOL, counter sinking, 3/4 in - 90 deg.	1	-	L	-							R
Martin Baker A/MBEU/70/EE	TOOL, cocking and uncocking snatch unit	1	-	C	-							R
1C/6329	WRENCH, torque, main plane attachment bolts	1	-	L	-							R

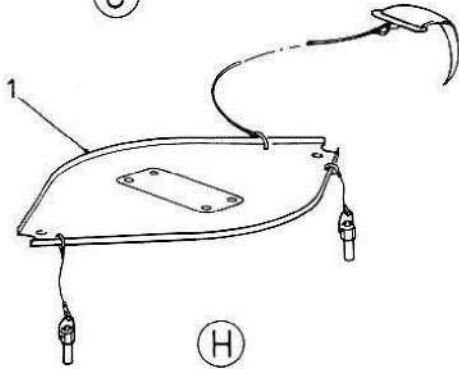




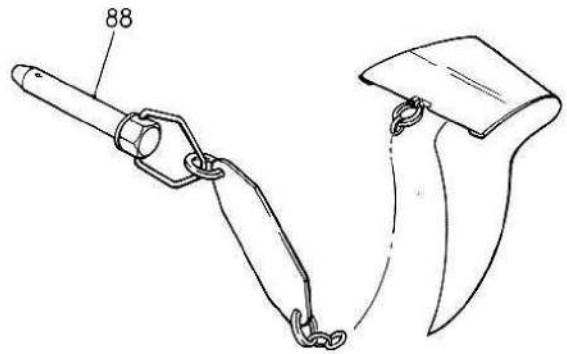
(C)



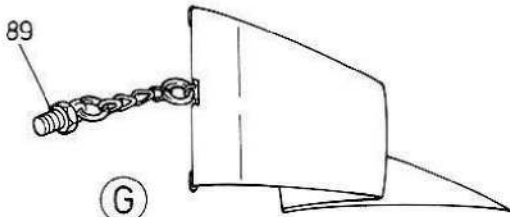
(D)



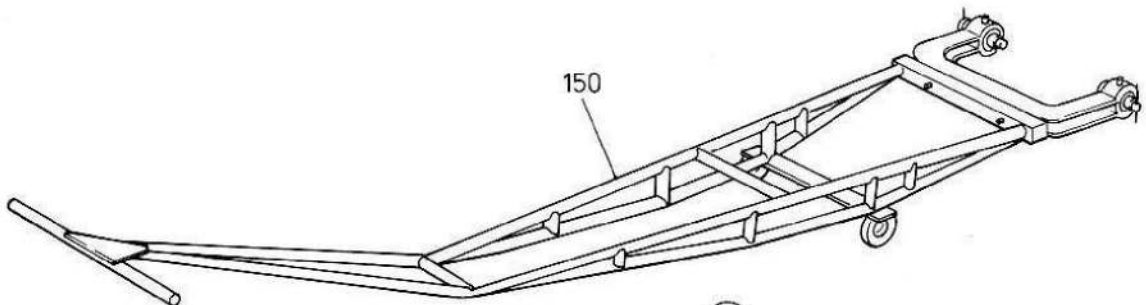
(H)



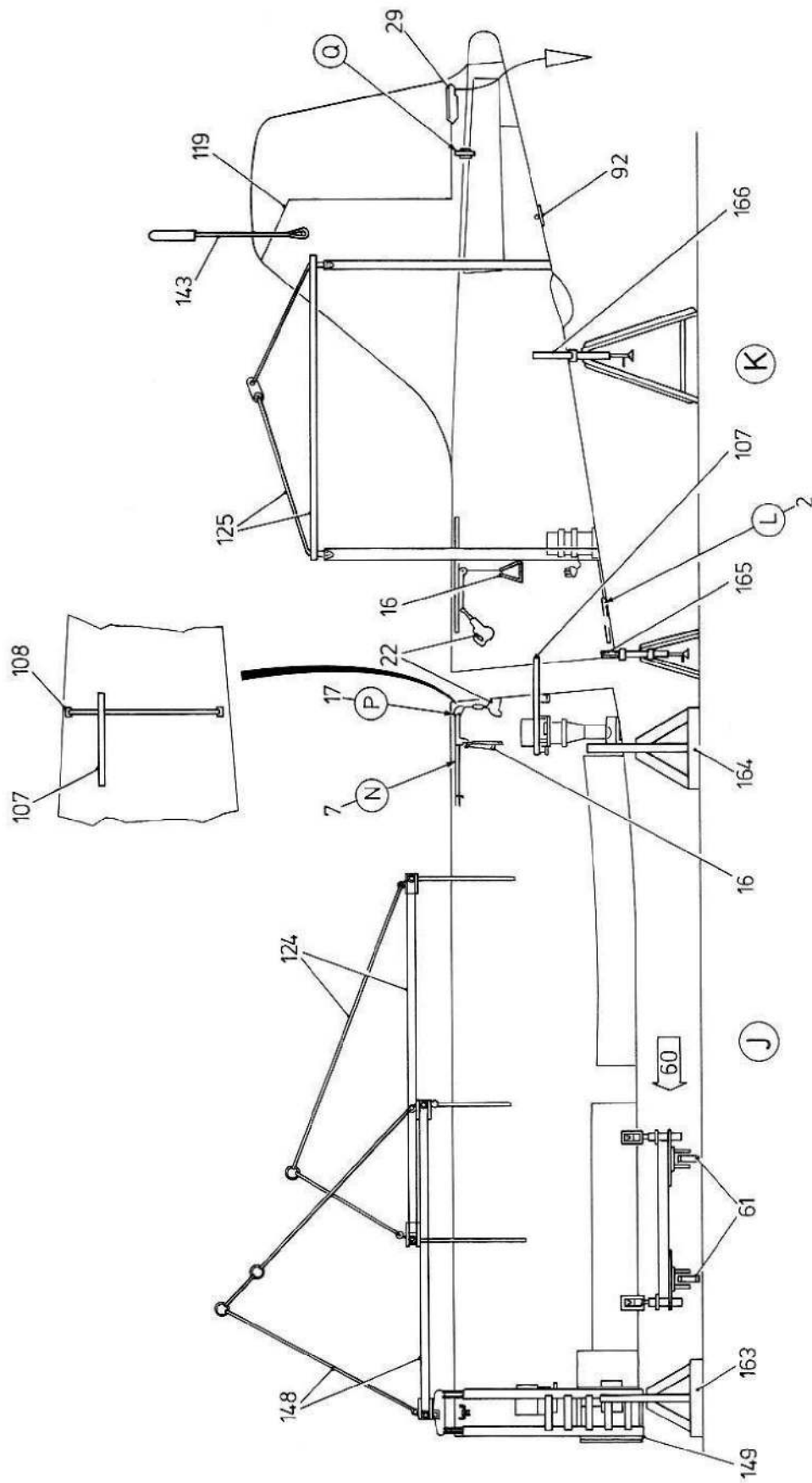
(E)

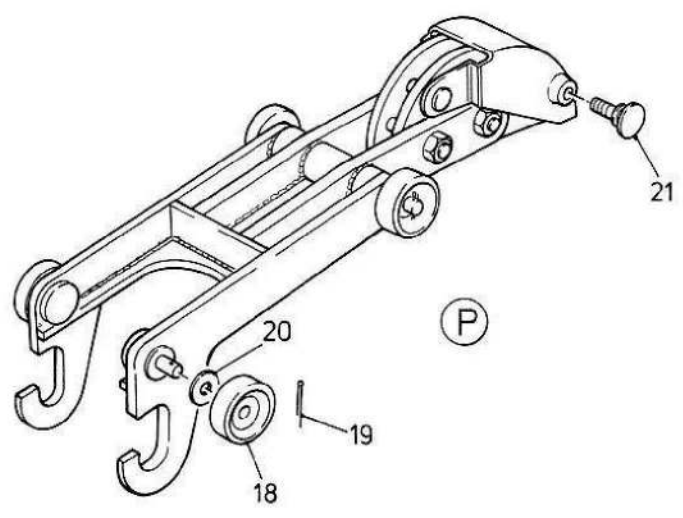
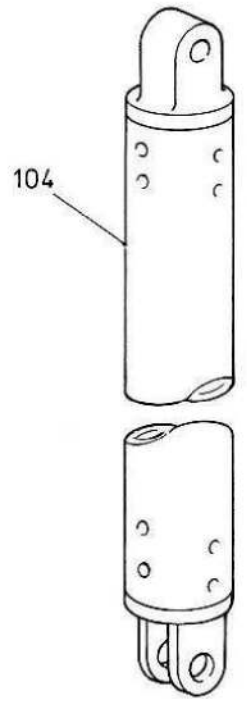
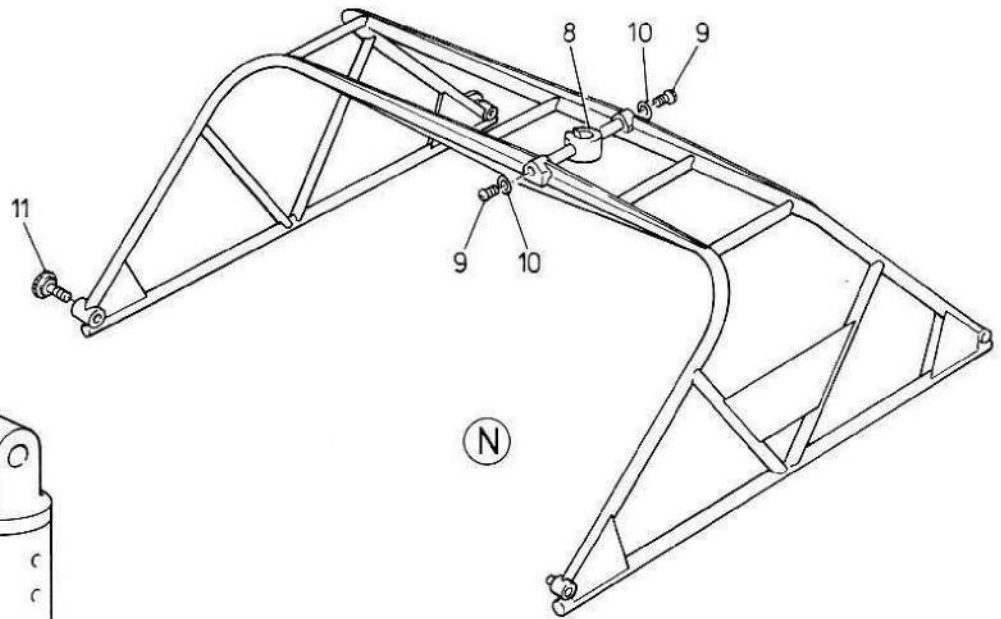
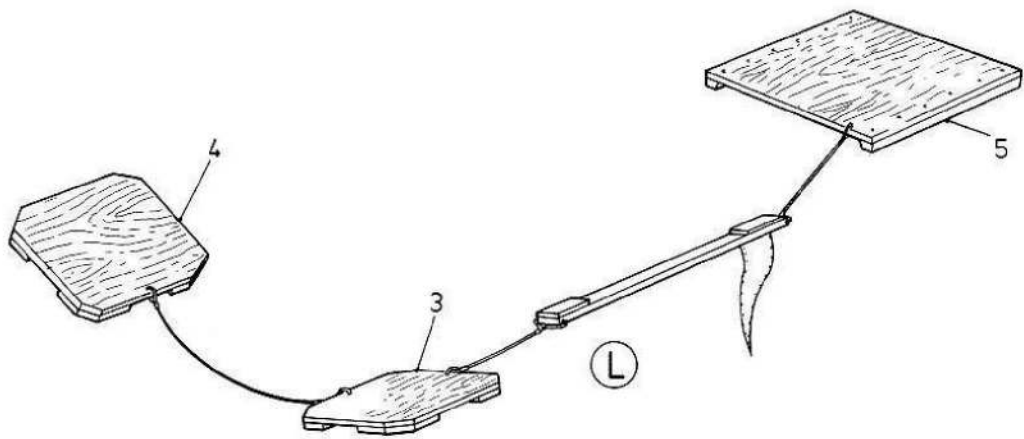


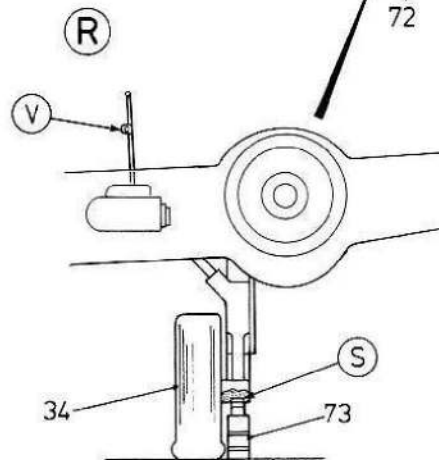
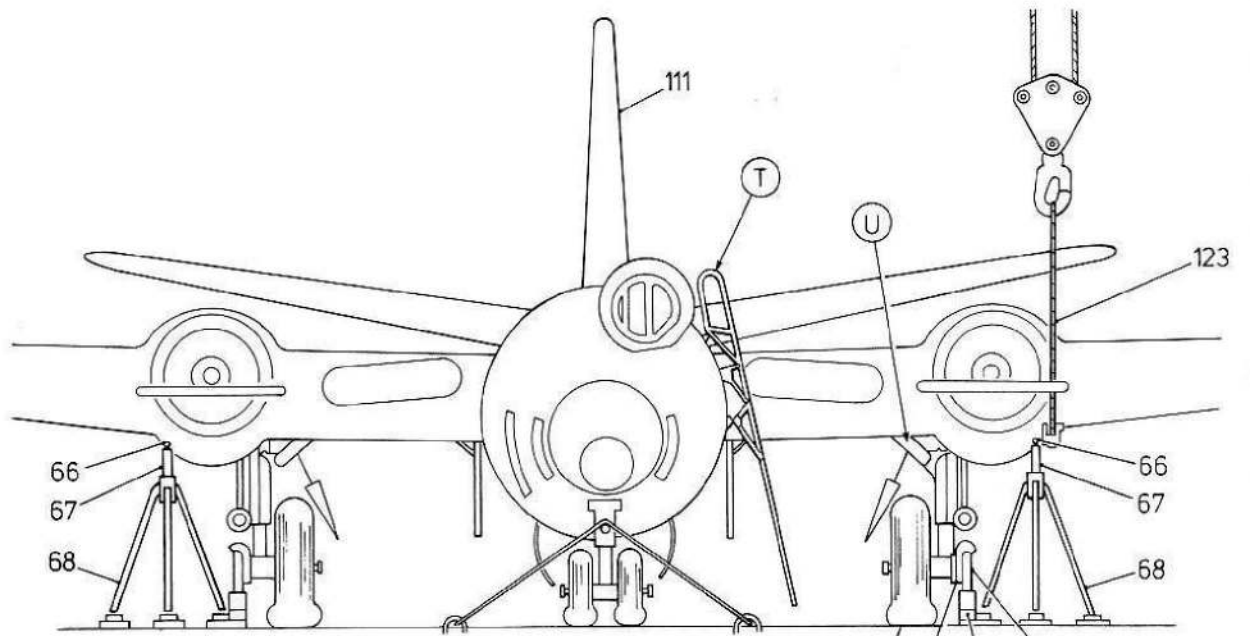
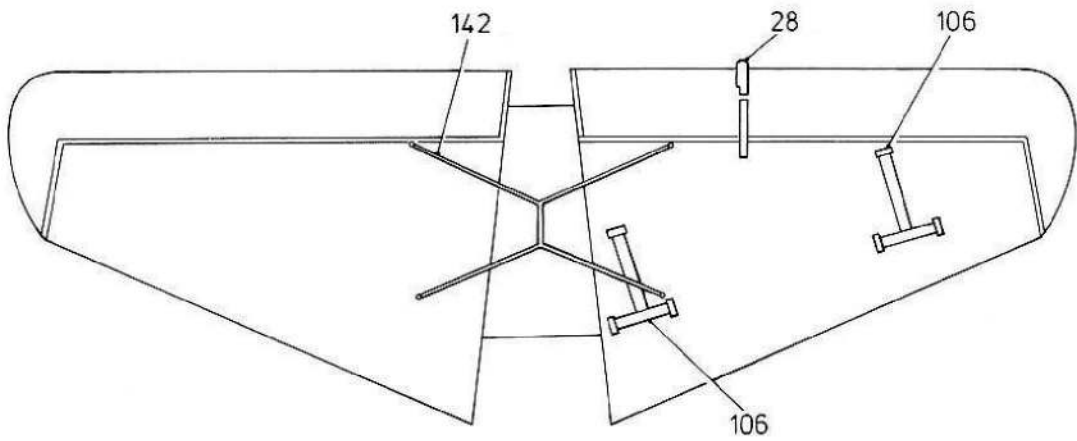
(G)

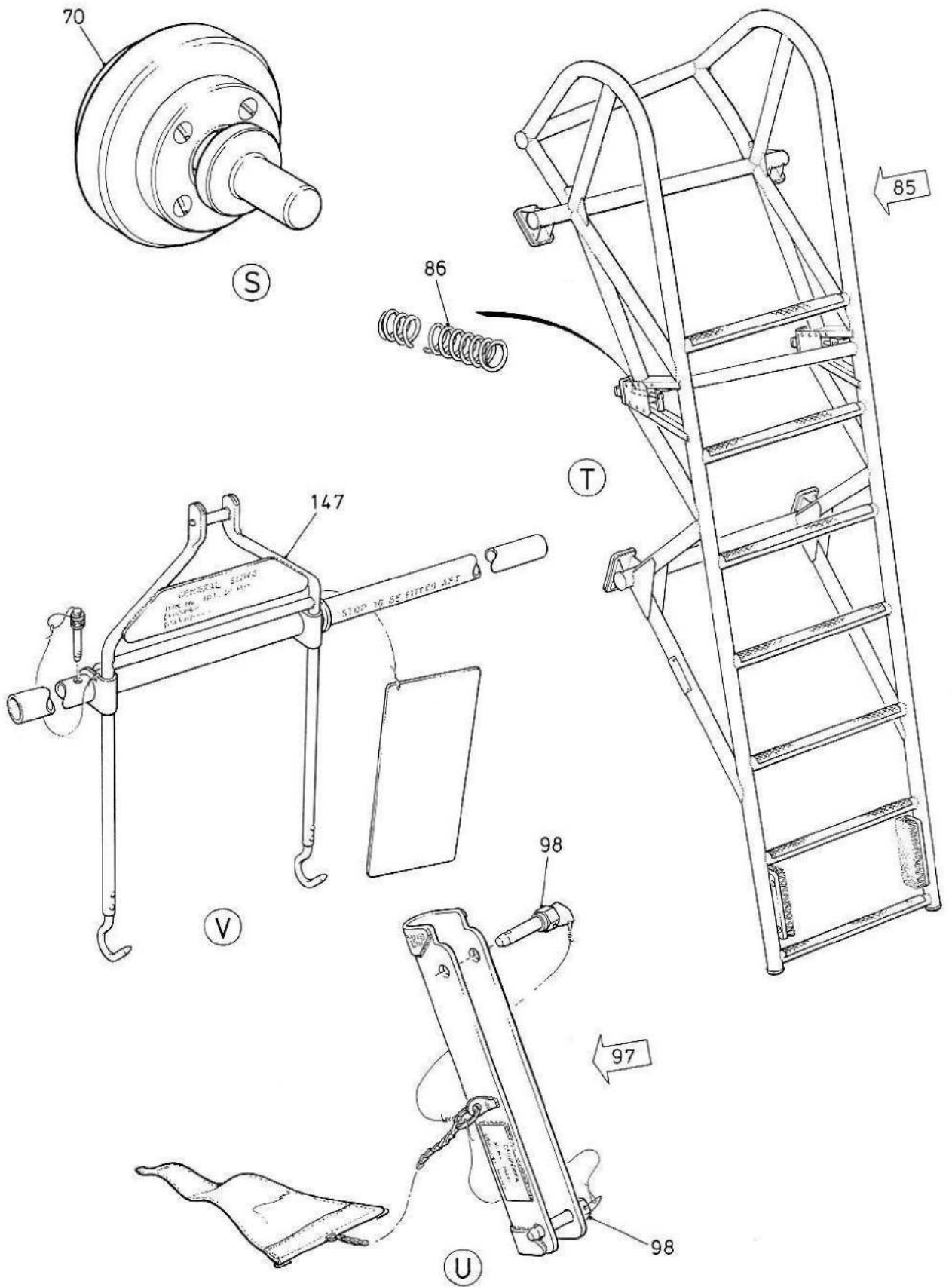


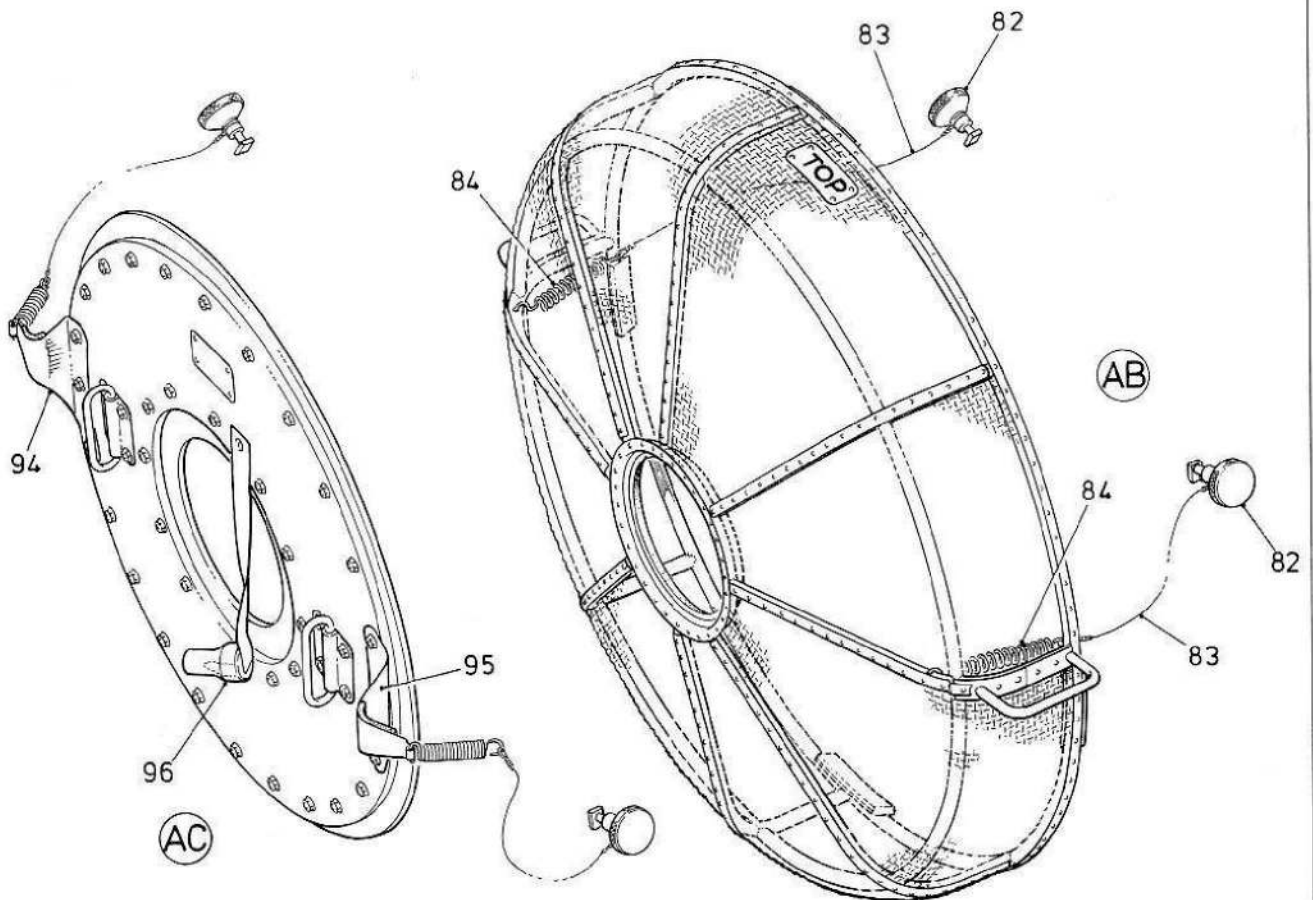
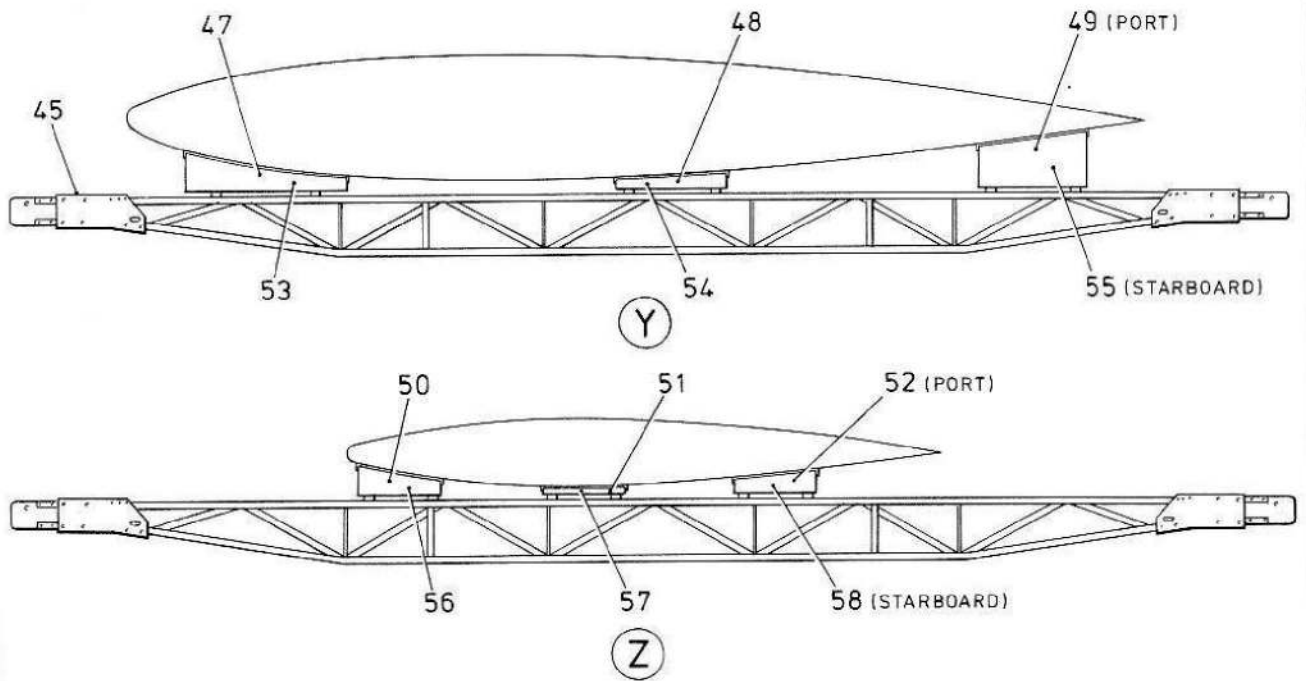
(F)

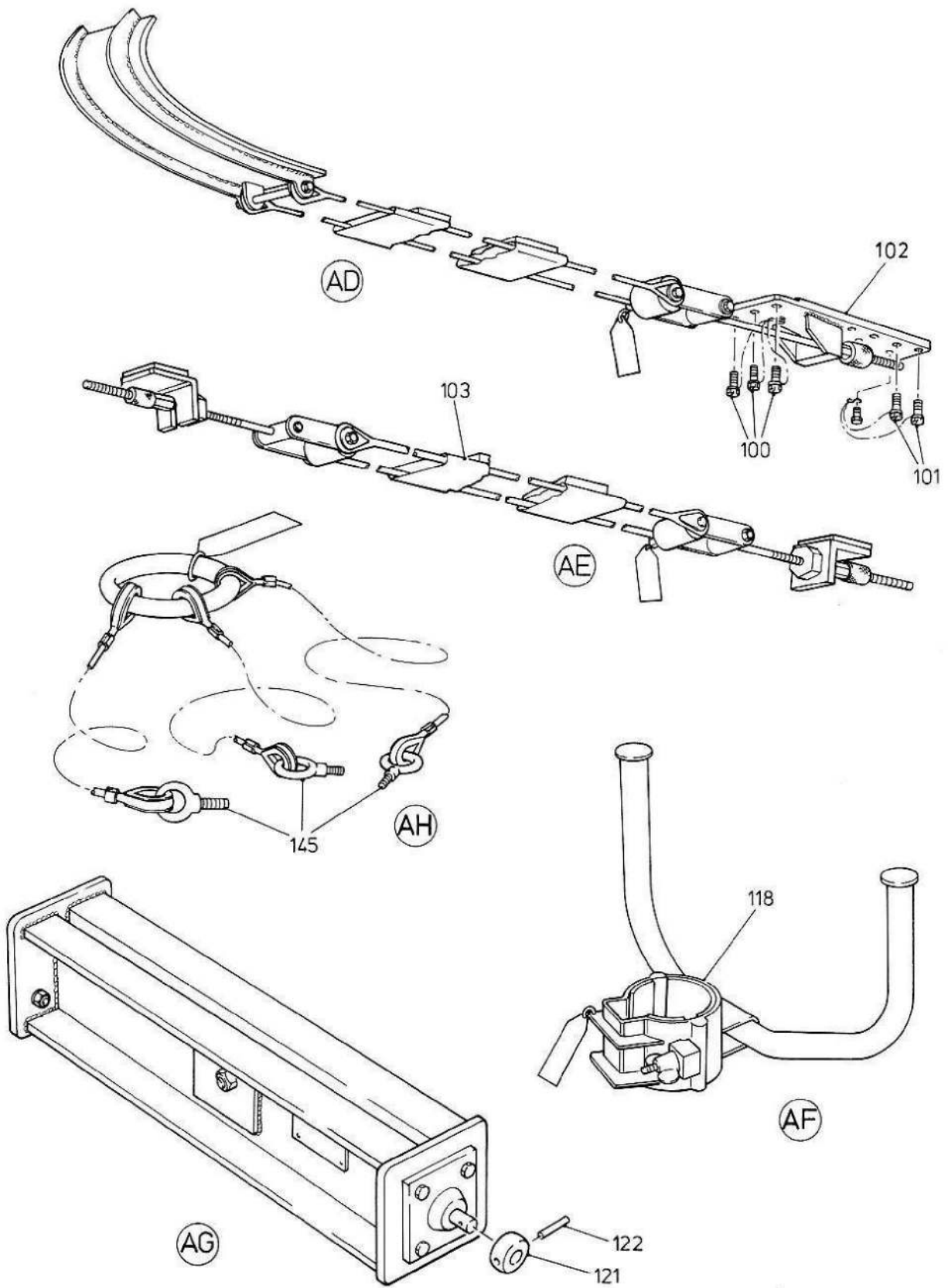


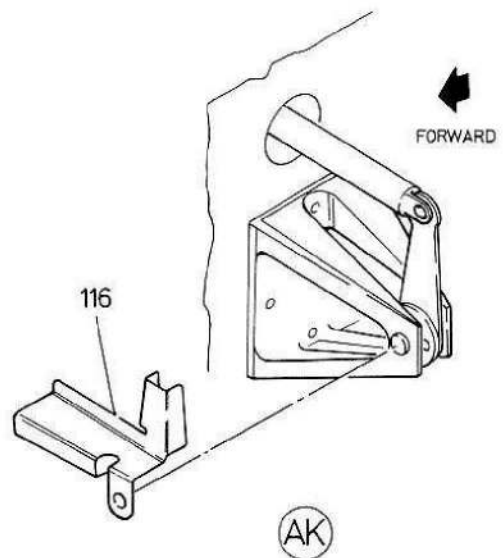
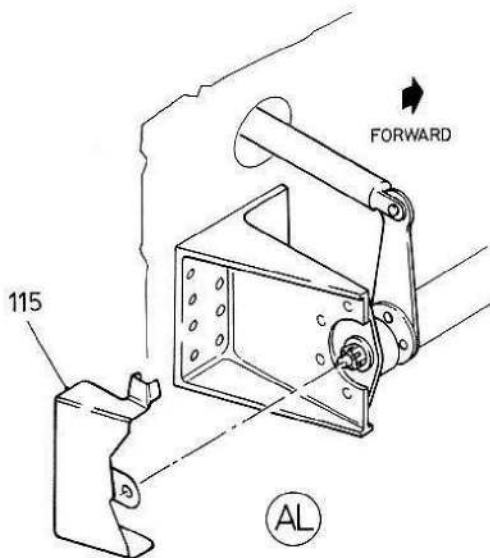
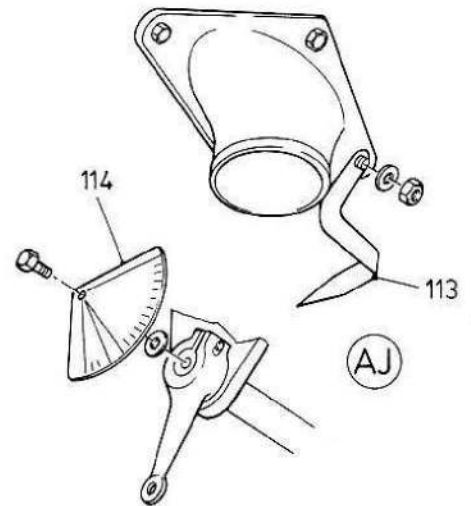
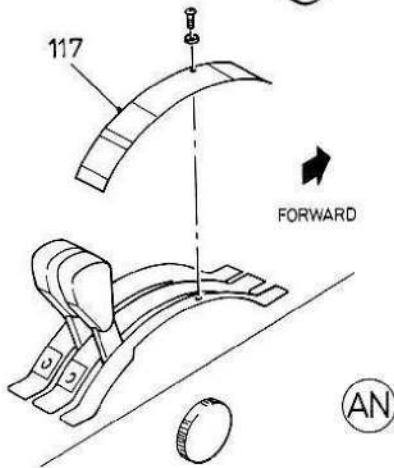
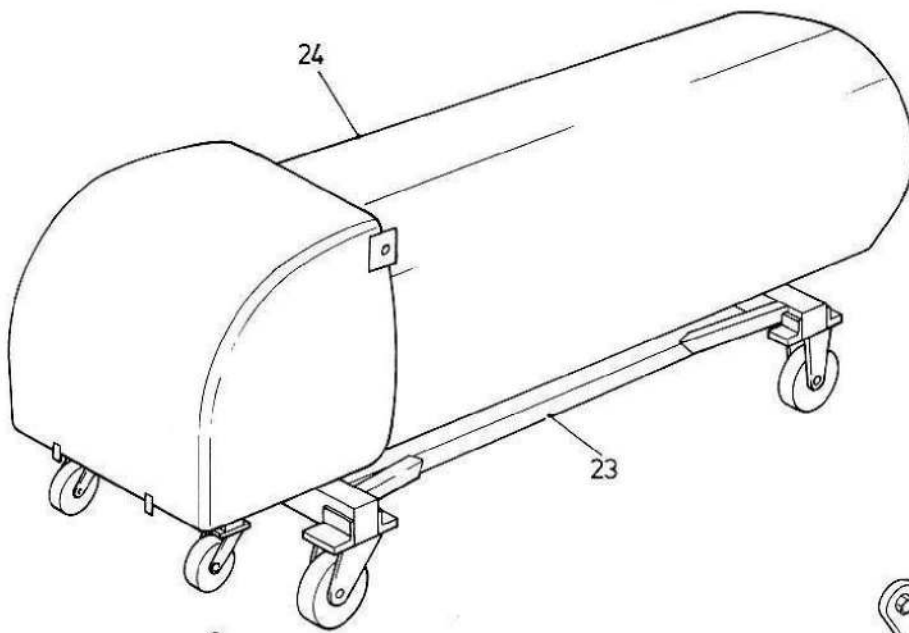


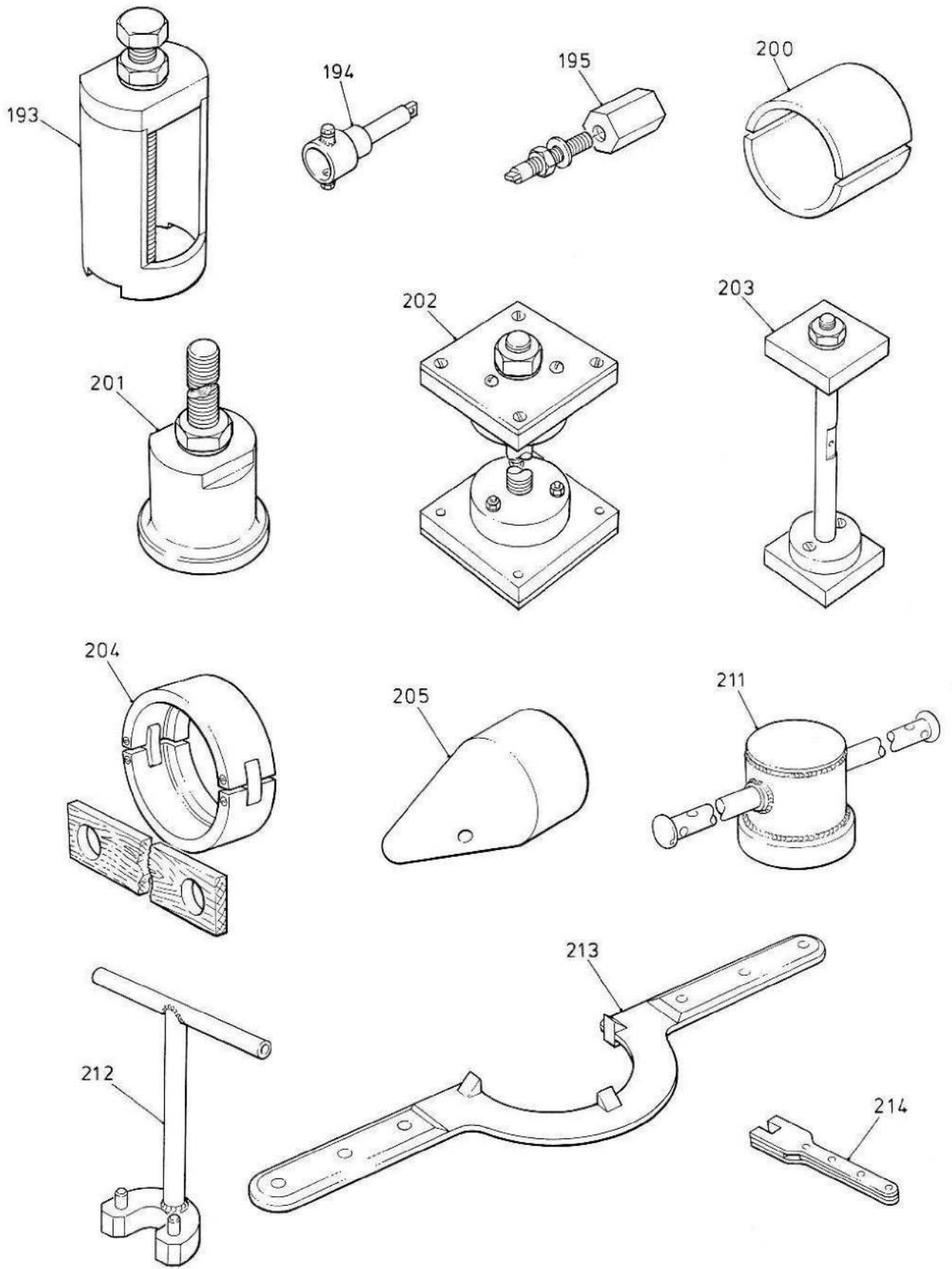


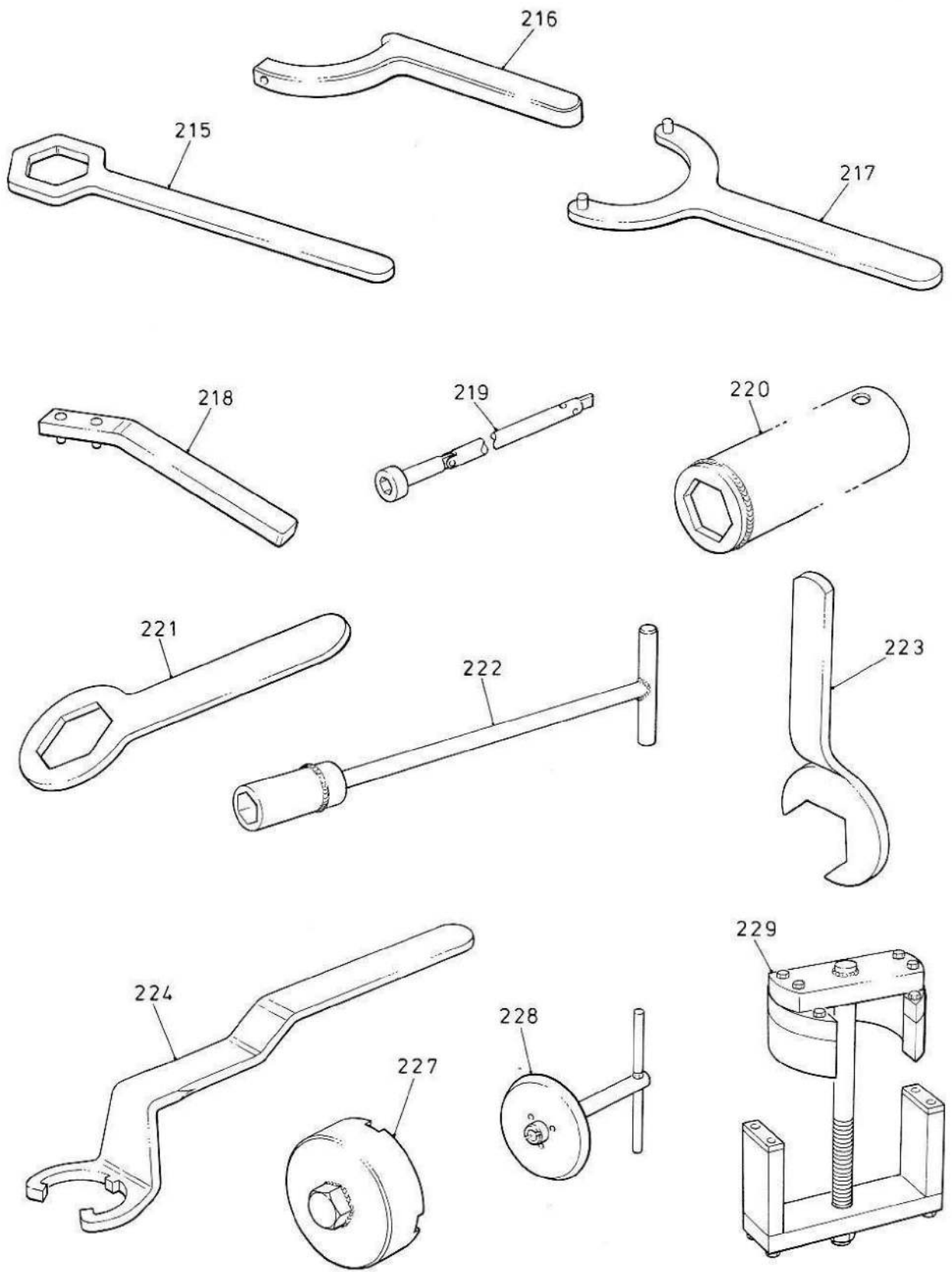












This file was downloaded
from the RTFM Library.

Link: www.scottbouch.com/rtfm

Please see site for usage terms,
and more aircraft documents.

