

EQUIPMENT
INSTRUMENT AND PANELS

Part No.	Description	No. off	Material Specification	Class of Eqpt M.R. or L.M.	Plate
	PANEL, Camera Control Console Assembly (Mod 5137) (EB8.81.5059)	-	-	-	ED5/1
	Spares for:				
EB8.81.5071	BOX, Spare Fuse Stowage	1	-	C	ED5/2
	Spares for:				
EB8.00.543	LID c/w spring	1	-	C	ED5/3
EB8.81.5431	CONDUCTOR, fuse	1	-	-	
	Attachment of Conductor to fuses				
A31/A8	Screw	22	-	C	
A31/B10	Screw	4	-	C	
14A/4862	CONTROL, IMC type F96 Mk.1	1	-	L	
	Attachment of IMC Control to Camera console panel				
A32/B8 Ltd	Screw, 4BA	4	-	C	
5213 Ltd	COUNTER, figure reset	5	-	L	
5713	COUNTER, figure reset (Pre Mod 5131)	1	-	-	
	Attachments of figure reset counter to camera console				
A33/A8	Screw 6BA	2	-	C	
EB8.81.5713	COVER (Pre Mod 5131)	1	-	C	
51/9959118	FILAMENT, midget (Pre Mod 5131)	10	-	C	
5L/9959118	FILAMENT, midget (Mod 5131)	7	-	C	
10H/	FUSE 3 amp, size 'O'	2	-	C	
10H/01200076	FUSE 5 amp, size 'O' (Pre Mod 5131)	5	-	C	
10H/01200076	FUSE 5 amp, size 'O' (Mod 5131)	11	-	C	
10H/01200078	FUSE 10 amp, size 'O' (Pre Mod 5131)	2	-	C	
10H/01200078	FUSE 10 amp, size 'O' (Mod 5131)	5	-	C	
10H/01200079	FUSE 15 amp, size 'O' (Pre Mod 5131)	4	-	C	
10H/01200079	FUSE 15 amp, size 'O' (Mod 5131)	6	-	C	
10H/01200080	FUSE 20 amp, size 'O' (Pre Mod 5131)	2	-	C	
10H/01200080	FUSE 20 amp, size 'O' (Mod 5131)	1	-	C	
Belling Lee L1341	HOLDER, fuse	26	-	C	
	Attachment of fuse holders to "TRANSLITE" panel				
AGS2035/A	Washer	2	-	C	
AGS2035/B	Washer	2	-	C	
390/1A	INDICATOR, film type 109	3	-	P	
	Attachment of film indicator to camera console panel				
A32/A8	Screw 6BA	4	-	C	

EQUIPMENT
INSTRUMENT AND PANELS

Part No.	Description	No. off	Material Specification	Class of Eqpt M.R. or L.M.	Plate
5CZ/5073	INDICATOR magnetic type A2	2	-	L	
X11601	KNOB oak switch (Pre Mod 5131)	2	-	L	
X11601	KNOB oak switch (Mod 5131)	1	-	L	
10AK/0112996	KNOB, oak switch	2	-	L	
C500/C7	LAMP, push to test amber (Pre Mod 5131)	1	-	L	
5CX/1635	LAMP warning green	1	-	L	
PPL120	LAMP HOLDER, c/w shroud (Pre Mod 5131)	10	-	L	
PPL120	LAMP HOLDER, c/w shroud (Mod 5131)	7	-	L	
EB8.81.5885	LOCK, switch (Mod 3494 (Pre Mod 5131)	1	-	C	ED5/4
	Attachment of switch lock to "TRANSLITE" panel P971X1				
AGS2002/A1	Nut stiff 6BA (Pre Mod 5131)	2	-	C	
A33/A6	Screw, 6BA (Pre Mod 5131)	2	-	C	
P970X2	PANEL, "TRANSLITE" (SEM/CAN/01/STC SEM(CAN/02/STC embodied (Pre Mod 5131)	1	-	L	ED5/5
EB8.81.6811	PANEL, "Translite" (Mod 5131)	1	-	L	ED5/6
P971X1	PANEL, "Translite" (Thorn Electrics) SEM/CAN/01/STC SEM/CAN/02/STC and SEM/CAN/04/STC embodied (Pre Mod 5137)	1	-	L	ED5/7
EB8.81.6719	PANEL, "Translite" (Thorn Electrics) SRIM 3983 embodied (Make from P971X1) (Mod 5137)	1	-	L	ED5/8
5CW/1035907	SHROUD (Pre Mod 5131)	1	-	C	
Dowty	SHROUD safety flap (Pre Mod 5131)	1	-	C	
D7617Y	SWITCH, dimmer (Mod 5131)	1	-	-	
01-0106	SWITCH, dimmer (Mod 5131)	1	-	L	
01-0015	SWITCH, dimmer (Mod 5131)	1	-	L	
5CW/6608	SWITCH, dimmer double ganged (Pre Mod 5131)	1	-	L	
Dowty	SWITCH, push type B (Pre Mod 5131)	3	-	L	R
C5162Y Mk.3	SWITCH, push type B (Mod 5131)	1	-	L	R
Dowty	SWITCH, push type C (Pre Mod 5131)	3	-	L	
5CW/5088	SWITCH, push type C (Mod 5131)	1	-	L	
5CW/5088	SWITCH, push type C (Mod 5131)	1	-	L	
	Attachment of push switch to camera console panel				
A47/Z	Nut, 8BA	4	-	C	
A32/Z10	Screw, 8BA	4	-	C	
1202 type 12	Washer, spring 8BA	2	-	C	
10F/18744	SWITCH, rotary	4	-	L	
N.S.F.	SWITCH, tumbler (Pre Mod 4843)	5	-	L	R
8824-B107	SWITCH, tumbler (Mod 4843 Pre Mod 5000 ALT/SB/9/009)	4	-	L	R
N.S.F.	SWITCH, tumbler (Mod 5000 ALT/SB/9/009)	4	-	L	
8824-B107	SWITCH, tumbler (Mod 5000 ALT/SB/9/009)	4	-	L	
Dowty	SWITCH, tumbler (Mod 5000 ALT/SB/9/009)	4	-	L	
AS10512C-1	SWITCH, tumbler (Pre Mod 5131)	1	-	L	R
N.S.F.	SWITCH, tumbler (Pre Mod 4372)	9	-	L	R
8804-B105	SWITCH, tumbler (Pre Mod 4372 Pre Mod 5000 ALT/SB/9/009)	8	-	L	
N.S.F.					
8810-B109					
N.S.F.					
8810-B109					

EQUIPMENT
INSTRUMENT AND PANELS

Part No.	Description	No. off	Material Specification	Class of Eqpt M.R. or L.M.	Plate
Dowty AS10512A-2	SWITCH, tumbler (Mod 5000 ALT/SB/9/009)	8	-	L	
5CW/4400215	SWITCH, tumbler (Pre Mod 5131)	1	-	L	
5CW/4400216	SWITCH, tumbler (Pre Mod 5131)	8	-	L	
5CW/4400216	SWITCH, tumbler (Mod 5131)	6	-	L	
Dowty AS10512A-4	SWITCH, tumbler (Mod 5000 ALT/SB/9/009)	3	-	L	
	Attachment of tumbler switch to camera console panel				
EEAS200	Washer, locking	AR	-	C	
10C/9133137	SWITCH, type D.M.I. 32530 (Pre Mod 5131)	2	-	C	
10C/9133137	SWITCH, type D.M.I. 32530 (Mod 5131)	1	-	C	
5CW/7303	SWITCH, type 665512 DM.6	1	-	L	
10F/2107	SWITCH, type DMI 57535 rotary motor	1	-	L	
	PANELS MAIN ELECTRICAL ASSEMBLY (EB8.81.2001)	-	-	-	
	Spares for:				
EB8.81.4861	BAR, bus "P1" (Pre Mod 3062)	1	-	C	
EB8.81.4897	BAR, bus "P2" (Pre Mod 3062)	1	-	C	
	Attachment of bus bar to relay plug and connectors				
A25/6E	Bolt 1/4 in. BSF	1	-	C	
A25/6J	Bolt 3/8 in. BSF	1	-	C	ED3/1
A27/EP	Nut 1/4 in. BSF	1	-	C	
A27/JP	NUT 3/8 in. BSF	1	-	C	ED3/2
SP13/E	Washer 1/4 in.	1	-	C	
SP13/J	Washer 3/8 in.	1	-	C	ED3/3
SP47/E	Washer spring 1/4 in.	1	-	C	
SP47/J	Washer spring 3/8 in.	1	-	C	ED3/4
EB8.81.4857	BAR, bus "P3" (Pre Mod 3062)	1	-	C	
EB8.81.4845	BAR, bus "P4" (Pre Mod 3062)	1	-	C	
	Attachment of bus bar to relay plug and circuit breaker				
A25/6E	Bolt 1/4 in. BSF	1	-	C	
A27/EP	Nut, 1/4 in. BSF	1	-	C	
EA9.81.2403	Washer contact	1	B11	C	
SP13/E	Washer 1/4 in.	1	-	C	
SP47/E	Washer spring 1/4 in.	1	-	C	
EB8.81.5507	BAR, bus "1" (Mod 3062)	1	-	C	ED3/5
EB8.81.5511	BAR, bus "P2" (Mod 3062)	1	-	C	ED3/6
	Attachment of bus bar to switch and connectors				
A104/3G	Bolt, 5/16 in. UNF	1	-	C	ED3/7
A25/6J	Bolt, 3/8 in. BSF	2	-	C	
A27/JP	Nut, 3/8 in. BSF	2	-	C	
SP13/G	Washer, 5/16 in.	1	-	C	ED3/8
SP13/J	Washer, 3/8 in.	2	-	C	
SP47/G	Washer, spring 5/16 in.	1	-	C	ED3/9
SP47/J	Washer, spring, 3/8 in.	2	-	C	
EB8.81.5641	BAR, bus "P3" (Mod 3062)	1	-	C	ED3/10
EB8.81.5637	BAR, bus "P4" (Mod 3062)	1	-	C	ED3/11

EQUIPMENT
INSTRUMENT AND PANELS

Part No.	Description	No. off	Material Specification	Class of Eqpt M.R. or L.M.	Plate								
						1	2	3	4	5	6		
	Attachment of bus bar to switch and circuit breaker												
A104/3G	Bolt, 5/16 in. UNF	1	-	C	ED3/12								
EA9.81.2403	Washer, contact	1	B11	C	ED3/13								
SP13/G	Washer, 5/16 in.	1	-	C	ED3/14								
SP47/G	Washer, spring 5/16 in.	1	-	C	ED3/15								
5X/3271	BLOCK, fuse, 4 way	3	-	L	ED3/16								
EB8.81.5389	FAIRLEAD, group	2	-	C	ED3/17								
	Attachment of fairlead to stiffener on frame 12A												
A25/11C	Bolt, 2BA	2	-	C	ED3/18								
AGS2001/C1	Nut, stiff, 2BA	2	-	C	ED3/19								
AS2807/5/087	Tube, distance (Make from 30A/1940) 20 swg	2	T45	LM	ED3/20								
	PANEL, Bus Bar Assembly (EB8.81.1939) (SA5385)	-	-	-									R
	Spares for:												
EB8.81.1961	BAR, main bus	1	BSS1432	C	ED3/21								
5X/3271	BLOCK, fuse 4 way	4	-	L	ED3/22								
EB8.81.1949	BLOCK, mounting, upper	1	BS1137	C	ED3/23								
EB8.81.1951	BLOCK, mounting, upper	1	BS1137	C	ED3/24								
EB8.81.1953	BLOCK, mounting, upper	1	BS1137	C	ED3/25								
EB8.81.1955	BLOCK, mounting, lower	1	BS1137	C	ED3/26								
EB8.81.1957	BLOCK, mounting, lower	2	BS1137	C	ED3/27								
	Attachment of mounting block to panel												
AS1246/9B	Bolt, 4BA	7	-	C	ED3/28								
AS1246/13B	Bolt, 4BA	12	-	C	ED3/29								
EB8.81.5799	COVER, Bus Bar, Group (Pre Mod 5131)	1	-	C	ED3/30								
EB8.81.5799x6	COVER, Bus Bar, Group (Mod 5131 Pre Mod 5478/B)	1	-	C	ED3/31								
EB8.81.5799x7	COVER, Bus Bar Group (Mod 5478/B satisfied by SEM/CAN/099/STC, Pre SA5385)	1	-	LM	ED3/32								
EB8.81.5799x8	COVER, Bus Bar Group (Post SA5385 Pre Mod 5000 ALT/SB/9/080) (M/F 26FZ/6147767)	1	-	LM	-								R
EB8.81.5799x9	COVER, Bus Bar Group (Mod 5000 ALT/SB/9/080) (M/F 26FZ/6147767)	1	-	LM	-								R
	Spares for:												
EB8.81.5807	COVER (SA5385)	1	-	C	-								R
EB8.84.1143	LABEL, additional (Mod 5000 ALT/SB/9/080)	1	-	C	-								R
EA4.81.1611	SCREW, cover, 4BA	6	BS249	C	ED3/33								
	Attachment of label to fuse No. 14												
A4103	Adhesive, 'Araldite'	AR	-	C	-								R
H7951	Hardener	AR	-	C	-								R
5CZ/5214	FUSE, 2.5 amp	4	-	C	ED3/34								
5CZ/5215	FUSE, 5 amp	3	-	C	ED3/35								
5CZ/5216	FUSE, 10 amp	3	-	C	ED3/36								
5CZ/5218	FUSE, 20 amp	2	-	C	ED3/37								
5CZ/5780	FUSE, type 1078	2	-	C	ED3/38								R

Part No.	Description	No. off	Material Specification	Class of Eqpt M.R. or L.M.	Plate						
						1	2	3	4	5	6
10H/0119128	FUSE, H R C 125 amp (SA5385)	2	-	C	ED3/39						
10H/0590126	FUSE, H R C 40 amp	6	-	C	ED3/40						
10H/0590127	FUSE, H R C 60 amp	3	-	C	ED3/41						
10H/0590129	FUSE, H R C 100 amp	3	-	C	ED3/42						
10H/0119927	FUSE, H R C 200 amp	2	-	C	-						
	Attachment of heavy duty fuses to mounting blocks										
EB7.81.1009	Stud, 5/16 in. BSF c/w nut and washer	1	-	C	ED3/43						
EB7.81.1041	LINK, copper	18	BSS1432	C	ED3/44						
	Attachment of copper link to mounting block										
EB7.81.1011	Stud, 1/4 in. BSF c/w nut and washer	1	-	C	ED3/45						
EEAS71/3	LINK, 4-way	2	-	C	-						
AS2697	LUG, adapter 4-way 19 amp	1	-	C	ED3/46						
	Attachment of lug adaptor to bus bar										
A25/2G	Bolt, 5/16 in. BSF	1	-	C	ED3/47						
AGS2002/G1	Nut, stiff 5/16 in. BSF	1	-	C	ED3/48						
SP13/G	Washer, 5/16 in	1	-	C	ED3/49						
	PANEL, Aft Assembly (EB8.81.1991)	-	-	-	-						
5X/3271	BLOCK, fuse, 4-way	1	-	L	ED3/50						
5X/3181	BLOCK, terminal, 20-way	2	-	L	ED3/51						
EB8.81.4855	BLOCK, bus bar (Pre Mod 3062)	3	BS1137	C	-						
EB8.81.4853	COVER, bus bar block (Pre Mod 3062)	3	BS1137	C	-						
	Attachment of bus bar cover and block to aft panel										
A25/20C	Bolt, 2BA	2	-	C	-						
EB8.81.5663	BLOCK, support (Mod 3062)	1	-	C	ED3/52						
	Attachment of support block to aft panel										
A25/27C	Bolt, 2BA	2	-	C	ED3/53						
EB8.81.5647	BLOCK, support (Mod 3062)	1	-	C	ED3/54						
	Attachment of support block to aft panel										
A25/28C	Bolt, 2BA	2	-	C	ED3/55						
EB8.81.5645	BLOCK, support (Mod 3062)	1	-	C	ED3/56						
EB8.81.5657	BLOCK, support (Mod 3062)	1	-	C	ED3/57						
EB8.81.5659	BLOCK, support (Mod 3062)	1	-	C	ED3/58						
	Attachment of support block to aft panel										
A25/31C	BOLT, 2BA	2	-	C	ED3/59						
SP13/C	Washer	2	-	C	ED3/60						
EB8.81.5649	BLOCK, support (Mod 3062)	1	-	C	ED3/61						
	Attachment of support block to aft panel										
A25/31C	Bolt, 2BA	1	-	C	ED3/62						

EQUIPMENT
INSTRUMENT AND PANELS

Part No.	Description	No. off	Material Specification	Class of Eqpt M.R. or L.M.	Plate						
						1	2	3	4	5	6
AS1242/30C	Bolt, 2BA	1	-	C	ED3/63						
5X/6165	COVER, terminal block, 20 way	2	-	C	ED3/64						
Z28426	PILLAR, fixing, 4BA	4	-	C	ED3/65						
EB8.81.5129	PLUG, relay (Pre Mod 3026)	4	BS249	C							
5UC/5210	RESISTOR, remote	2	-	C	ED3/66						
	Attachment of resistor to aft panel										
A33/B24	Screw, 4BA	2	-	C	ED3/67						
5CY/3002	SOCKET, 3 pole 2 amp.	3	-	L	ED3/68						
	Attachment of socket to aft panel										
A33/B14	Screw, 4BA	3	-	C	ED3/69						
AGS2002/B1	Nut, stiff, 4BA	3	-	C	ED3/70						
5CW/6166	SWITCH, magnetic, type 19B	2	-	P	ED3/71						
	Attachment of switch to aft panel										
A25/10E	Bolt, 1/4 in. BSF	4	-	C	ED3/72						
5CW/6441	SWITCH, double pole	2	-	L	ED3/73						
	Attachment of switch to aft panel										
A31/B8	Screw, 4BA	4	-	C	ED3/74						
	PANEL, Forward Assembly (EB8.81.1997) (Mod 5156)	-	-	-	-						
	Spares for:										
EB8.81.2005	BAR, bus, circuit breaker to bus bar panel	1	-	C	ED4/1						
	Attachment of bus bar to connecting links and bus bar panel										
A25/6E	Bolt, 1/4 in. BSF	2	-	C	ED4/2						
A25/6J	Bolt, 3/8 in. BSF	5	-	C	ED4/3						
A27/EP	Nut, 1/4 in. BSF	2	-	C	ED4/4						
A27/JP	Nut, 3/8 in. BSF	5	-	C	ED4/5						
SP13/E	Washer, 1/4 in.	4	-	C	ED4/6						
SP13/J	Washer, 3/8 in.	10	-	C	ED4/7						
SP47/E	Washer, spring, 1/4 in.	2	-	C	ED4/8						
SP47/J	Washer, spring, 3/8 in.	5	-	C	ED4/9						
EB8.81.2531	BAR, bus, P10 to circuit breaker	2	-	C	ED4/10						
	Attachment of bus bar to connecting link										
A25/6E	Bolt, 1/4 in. BSF	2	-	C	-						
A27/EP	Nut, 1/4 in. BSF	2	-	C	-						
SP13/E	Washer, 1/4 in.	4	-	C	-						
SP47/E	Washer, spring, 1/4 in.	2	-	C	-						
EB8.81.4849	BAR, bus, reverse current circuit breaker to bus bar panel	1	-	C	ED4/11						
	Attachment of bus bar to connecting link and bus bar panel										
A25/6J	Bolt, 3/8 in. BSF	5	-	C	-						
A25/JP	Nut, 3/8 in. BSF	5	-	C	-						

EQUIPMENT
INSTRUMENT AND PANELS

Part No.	Description	No. off	Material Specification	Class of Eqpt M.R. or L.M.	Plate
SP13/J SP47/J AS2657	Washer, 3/8 in. Washer, spring, 3/8 in. BLOCK, terminal	10 5 1	- - -	C C C	ED3/75
	Attachment of terminal block to forward panel				
A32/B20 3271	Screw, 4BA BLOCK, fuse, 4 way	2 1	- -	C L	ED3/76
EB8.81.4855 EB8.81.5643 EB8.81.4853	BLOCK, bus bar (Pre Mod 3062) BLOCK, support, (Mod 3062) COVER, bus bar block (Pre Mod 3062)	1 1 1	BS1137 - BS1137	C C C	ED3/77
	Attachment of bus bar cover and block to forward panel				
A25/20C	Bolt, 2BA	2	-	C	ED3/78
EB8.81.2287	COVER, bus bar	1	DTD797A	C	ED3/79
	Attachment of bus cover to forward panel				
A31/C16 SP13/C	Screw, 2BA Washer, 2BA	6 6	- -	C C	ED3/80 ED3/81
EB8.81.5713 5CY/5332	COVER, switch, D/P CIRCUIT-BREAKER, reverse current	1 2	- -	C P	ED3/82 ED3/83
	Attachment of circuit-breaker to forward panel				
A31/C32 5CY/4376492	Screw, 2BA CIRCUIT - BREAKER, type D28	4 1	- -	C P	ED3/84 ED3/85
	Attachment of circuit breaker to forward panel				
A25/24C EA9.81.2433 SP13/C	Bolt, 2BA Piece, distance Washer, 2BA	4 4 4	- LFB82 -	C C C	ED3/86 ED3/87 ED3/88
EB8.81.2535	CONNECTOR, bus bar, ground supply connection to circuit breaker	1	-	C	ED4/12
	Attachment of connector to bus bar connection				
A25/6E A27/EP SP13/E SP47/E	Bolt, 1/4 in. BSF NUT 1/4 in. BSF Washer, 1/4 in. Washer, spring 1/4 in.	4 4 8 4	- - - -	C C C C	ED4/13 ED4/14 ED4/15 ED4/16
EB8.81.4909	CONNECTOR, bus bar, circuit breakers to terminal block	1	-	C	ED3/89
EB8.81.2345 EB8.81.2283 EB8.81.1999x5	FLAP, spring, group LINK, reverse current circuit breaker PANEL, Forward Assembly (Pre Mod 5156)	1 1 1	- - -	C C -	ED3/90 ED4/17 -
EB8.81.1999x6	PANEL, Forward Assembly (Mod 5156)	1	-	-	-
	Spares for:				
AGS2007/B1	NUT, anchor 4BA (Pre Mod 5156)	6	-	C	

EQUIPMENT
INSTRUMENT AND PANELS

Part No.	Description	No. off	Material Specification	Class of Eqpt M.R. or L.M.	Plate						
						1	2	3	4	5	6
AGS2007/B1 AGS2018/B1 AS2230/404 AS2230/404 EA9.81.2403	NUT, anchor 4BA (Mod 5156) NUT, anchor, (Mod 5156) RIVET, (Pre Mod 5156) RIVET, (Mod 5156) WASHER, contact	11 1 54 62 2	- - - - -	C C C C C	ED4/18						
	PLUG, External Supply Assembly (EB8.81.2291)	-	-	-	-						R
	Spares for:										
EB8.81.2339	BRACKET, Mounting Assembly (Pre Mod 5156)	1	-	C	ED4/19						
EB8.81.6711	BRACKET, Mounting Assembly (Mod 5156)	1	-	C	ED4/20						R
	Spares for:										
AGS2007/C1	NUT, anchor 2BA (Mod 5156)	2	-	C	ED4/21						
AGS2007/B1 SP88/304	NUT, anchor 4BA (Mod 5156) RIVET 3/32 in. (Mod 5156)	2 8	- -	C C	ED4/22 ED4/23						
	Attachment of mounting bracket to forward panel										
A31/B16 EB8.81.2533	Screw, 4BA Connector Bus Bar	4 1	- -	C C/MR	ED4/24 ED4/25						
	Attachment of bus bar connector to power supply plug										
EA9.81.2419 EA9.81.869 EB8.81.6755	Washer spacing COVER side aft (Pre Mod 5156) COVER side aft (Mod 5156)	1 1 1	L34 - -	C/MR - C	ED4/26 - -						R R
	Attachment of side cover aft to external supply plug										
A33/B14 5CW/6185	Screw, 4BA SWITCH, magnetic relay, type R3	2 1	- -	C P	- ED3/91						R
	Attachment of magnetic relay switch to forward panel										
A25/24C EA9.81.2433 SP13/C D5900	Bolt, 2BA Piece, distance Washer, 2BA SWITCH, magnetic relay type 20B No.3	4 4 4 1	- LFB82 - -	C C C L	ED3/92 ED3/93 ED3/94 ED3/95						R R
	Attachment of switch to mounting brackets										
A31/A14 SP47/A 5CW/6580	Screw, 6BA Washer, spring, 6BA SWITCH, tumbler	2 2 1	- - -	C C C	ED3/96 ED3/97 ED3/98						
	Attachment of tumbler switch to mounting bracket										
A31/C14 EB8.81.6717	Screw, 2BA Stiffener (Make from 30B/5611218)	2 1	- -	C LM	ED3/99 -						R

EQUIPMENT
INSTRUMENT AND PANELS

Part No.	Description	No. off	Material Specification	Class of Eqpt M.R. or L.M.	Plate										
						1	2	3	4	5	6				
	Attachment of stiffener to external supply plug:														
A25/1B	Bolt, 4BA	4	-	C	-										R
AGS2050/424	Rivet Monel	11	-	C	-										R
SP13/B	Washer	4	-	C	-										R
5CW/9499154	SWITCH, magnetic relay, type T, No 2	2	-	L	ED3/100										
	Attachment of magnetic relay switch to frame 12A														
A25/2C	Bolt, 2BA	2	-	C	ED3/101										
5CW/6165	SWITCH, magnetic, type 18B	2	-	P	ED3/102										
	Attachment of magnetic switch to structure between frames 11 and 12A														
A31/C14	Screw, 2BA	3	-	C	ED3/103										
EEAS28/33EW	Washer, earth connection	1	-	C	ED3/104										R
	PANEL, Navigator's Instrument, Port Assembly (EB8.80.2521)	-	-	-	ED5/9										R
	Spares for:-														
EB8.20.2677	BRIDGE, master compass indicator	1	L72	LM											
6A/5957	CONTROL UNIT, manual, type 605	1	-	L											
	Attachment of control unit to panel														
AGS2001/A4	Nut, stiff 6BA	4	-	C											
A44/A16	Screw, 6BA	4	-	C											
5L/9959118	FILAMENT, miniature 28V .04 amp	7	-	C											
SP40/C10	GROMMET	1	-	C											
6B/2644	INDICATOR, master compass, type C (See Section EA)	-	-	P											
6A/5949	INDICATOR, rate of flow and total, type 1, 302-5PM	1	-	P											
	Attachment of rate of flow indicator to panel														
A44/B12	Screw, 4BA	1	-	C											
A44/B20	Screw, 4BA	2	-	C											
5CZ/5003	INDICATOR, electric magnetic	2	-	C											
5CX/1143214	LIGHT, bridge, type C	1	-	C											R
	Attachment of lighting bridge to panel														
A44/B20	Screw, 4BA	2	-	C											
Thorn	PILLAR LAMPHOLDER	5	-	C											
80/10/0855	TUBE, distance 17 swg, between bridge and flange of indicator	2	T45	LM											
AS2808/15/02	PANEL, Navigator's, Centre, Installation (Pre Mod 5000 ALT/SB/9/080) (EB8.80.4321)	-	-	-											R
	PANEL, Navigator's Centre, Installation (Mod 5000 ALT/SB/9/080) (EB8.80.4323)	-	-	-											R

EQUIPMENT
INSTRUMENT AND PANELS

Part No.	Description	No. off	Material Specification	Class of Eqpt M.R. or L.M.	Plate
	Spares for:				
Page A260	FILAMENT, 28V (Mod 5000 ALT/SB/9/080)	1	-	C	
Page Type 5A	KNOB (Mod 5000 ALT/SB/9/080)	1	-	C	
EB8.81.6865	LABEL (Mod 5000 ALT/SB/9/080)	1	-	C	
EB8.81.6867	LABEL (Mod 5000 ALT/SB/9/080)	1	-	C	
Dowty C5162Y Mk.6C	SWITCH, push (Mod 5000 ALT/SB/9/080)	1	-	L	R
Page B2400	UNIT, indicating flashing (Mod 5000 ALT/SB/9/080)	1	-	P	
	PANEL, Navigators Instrument, Starboard, Assembly (EB8.80.2643)	-	-	-	ED5/10 R
	Spares for:				
L83261-04-010	ALTIMETER, servo encoding type 30A	1	-	P	
	Attachment of altimeter to mooring plate				
A204/B36	Screw, pan hd. 6-32 UNC (Mod.4404)	4	-	C	
6A/3687	CAPTION, "AIR" (Pre Mod 5481)	1	-	C	R
10Q/16327	COMPASS, radio (Mod.4365)	1	-	P	
Thorn 5L/9959118	FILAMENT, miniature 28V.04 amp (Pre Mod 5481)	10	-	C	R
Thorn 5L/9959122	FILAMENT, 28V. 2W. (Pre Mod 5481)	1	-	C	R
Thorn 5L/9959118	FILAMENT, miniature, 28V .04 amp (Mod 5481)	8	-	C	R
Thorn 5L/9951230	FILAMENT, 24V. 2.8W	1	-	C	R
Thorn 5L/9959118	FILAMENT, midget 28V, .04 amp	2	-	C	R
Thorn 5L/9959118	FILAMENT, miniature, 28V.04 amp	1	-	C	
6A/3681	INDICATOR, air temperature, type A (Pre Mod 5481)	1	-	P	R
	Attachment of air temperature indicator to panel				
A44/B28	Screw, 4BA (Pre Mod 5481)	2	-	C	R
A44/B24	Screw, 4BA (Pre Mod 5481)	2	-	C	R
A44/B28	Screw, 4BA (Mod 5481)	4	-	C	R
6A/4722	INDICATOR, air speed mark 9M	1	-	P	
	Attachment of air speed indicator to panel				
A44/C40	Screw, 2BA.	2	-	C	
A44/C44	Screw, 2BA.	2	-	C	
5CZ/5003	INDICATOR, electro magnetic, type C1	1	-	L	
10Q/16335	INDICATOR, electrical, type 9547	1	-	P	
	Attachment of electrical indicator to panel				
A44/B20	Screw, 4BA	2	-	C	
A44/B28	Screw, 4BA	2	-	C	

EQUIPMENT
INSTRUMENT AND PANELS

Part No.	Description	No. off	Material Specification	Class of Eqpt M.R. or L.M.	Plate										
						1	2	3	4	5	6				
Thorn 80/10/0678 (Red)	LAMPHOLDER, pillar	2	-	C											
Thorn PPL120	LAMPHOLDER, type A, No.2	1	-	C											
5CX/1143214	LIGHTING, bridge type C (Pre Mod 5481)	4	-	C											
5CX/1143214	LIGHTING, bridge type C (Mod 5481)	3	-	C											
5CX/1069	LIGHT, warning	1	-	C											
Thorn P969X1	PANEL, "TRANSLITE"	1	-	C	ED5/11										
L84380-00-000	PLATE, mooring (Mod 4404)	1	-	L											
Thorn 80/10/0237	PLATE, pressure, round	1	-	C											
Thorn 80/10/0286	RECEPTACLE, round type	1	-	C											
Page Eng. C180/A/6	SWITCH, push button	1	-	C											
Thorn 80/10/0098	TERMINAL, earth	1	-	C											
	PANEL, Navigator's Switch and Dimmer (EB8.81.4945)	-	-	-	ED6/1										
	Spares for:														
5L/9959118	FILAMENT, miniature, 28V, .04 amp.	8	-	C											
10AK/2112996	KNOB, csk. switch	1	-	L											
Smiths 44C/FP	LAMP, indicator	1	-	C											
Thorn PPL120	LAMPHOLDER, plastec panel, c/w shroud	1	-	C											
Page C1101/C/7	SWITCH, I.F.F. fail	1	-	C											
Berco 5CW/6608	SWITCH, dimmer, double ganged	2	-	L											
Dowty C5162Y Mk.6C	SWITCH, push type B	1	-	L											
5CW/5057	SWITCH, push button	1	-	L											
N.S.F. 32530-DM1	SWITCH, rotary	1	-	L											
Rotax D5431/1	SWITCH, toggle	1	-	L											
	Attachment of toggle switch to panel														
A33/B8	Screw, 4BA	2	-	C											
N.S.F. 8804-B105	SWITCH, tumbler	2	-	L											
N.S.F. 8810-B109	SWITCH, tumbler	5	-	L											
N.S.F. 8834-B102	SWITCH, tumbler	1	-	L											
	Attachment of tumbler switch to panel														
EEAS200	Washer, locking	1	-	C											
Berco 5CW/6608	SWITCH, dimmer double ganged	1	-	L											
	PANEL, Navigators Undercarriage Fuse Assembly (EB8.81.6665)	-	-	-											

EQUIPMENT
INSTRUMENT AND PANELS

Part No.	Description	No. off	Material Specification	Class of Eqpt M.R. or L.M.	Plate
	Spares for:				
Plessey C262879	BLOCK, fuse, 4 way	1	-	C	
	Attachment of fuse block to panel				
A31/B8	Screw, ch. hd. 4BA	2	-	C	
10H/23865	FUSE, 2.5 amp	2	-	C	
10H/23864	FUSE, 5 amp	2	-	C	
Hellerman Z22431	GROMMET, Helsyn, type 3	1	-	C	
AS2766	LINK, commoning, 3 way	1	-	C	
EB8.81.6667	PANEL, navigators U/C fuse	1	-	-	
	Attachment of panel structure				
AS1246/1B	Bolt, rd. hd., 4BA	4	-	C	
SP13/B	Washer	4	-	C	
	PANELS, Pilot's Assembly (EB8.80.101)				
	Spares for:				
	ACCELEROMETER, Mounting, on Pilots Anti Reflection Screen (EB8.80.3703)	-	-	-	ED1/1
	Spares for:				
6A/4825	ACCELEROMETER, indicating, Mk. 2A	1	-	P	
	Attachment of accelerometer to mounting				
A32/B24	Screw, 4BA	1	-	C	
CZ50205	BLOCK, terminal, 2-way	1	-	C	
	Attachment of terminal block to mounting				
AGS2002/B3	Nut, stiff, 4BA	2	-	C	
SP15/B	Washer, 4BA	2	-	C	
5CX/5356	BRIDGE, lighting type G	1	-	C	
	Attachment of lighting bridge to mounting				
A32/B28	Screw, 4BA	2	-	C	
C226799	COVER, terminal block	1	-	L	
5L/9959118	FILAMENT, midget 28V, .04 amp	2	-	L	
SP40/B4	GROMMET, rubber	2	-	C	
SP40/B8	GROMMET, rubber	1	-	C	
EB8.10.8067	MOUNTING, accelerometer	1	-	C	ED1/2
	Attachment of mounting to pilot's coaming panel				
A61/2B	Bolt, 4BA	5	-	C	
AGS2002/B3	Nut, stiff, 4BA	5	-	C	
SP15/B	Washer, 4BA	5	-	C	
Z28426	PILLAR, fixing	2	-	C	
EB8.80.225	QUADRANT	1	-	C	

EQUIPMENT
INSTRUMENT AND PANELS

Part No.	Description	No. off	Material Specification	Class of Eqpt M.R. or L.M.	Plate
10F/0510554 Dowty	SWITCH, (Mod 5130) (Pre Mod 5137)	1	-	L	
A-7 N.S.F.	SWITCH, S/P	1	-	L	
8810-B109 Dowty	SWITCH, tumbler (Pre Mod 5000 ALT/SB/9/009)	2	-	L	R
AS10512A-2 N.S.F.	SWITCH, tumbler (Mod 5000 ALT/SB/9/009)	2	-	L	
8824-B107 Dowty	SWITCH, tumbler (Pre Mod 5000 ALT/SB/9/009)	1	-	L	R
AS10512C-1	SWITCH, tumbler (Mod 5000 ALT/SB/9/009)	1	-	L	
	Attachment of tumbler switch to panel				
EEAS200 5CW/6429	Washer, locking SWITCH, tumbler S/P, generator	AR 2	- -	C L	
	Attachment of tumbler switch to panel				
A33/B6 Sangamo Weston S149/2/115	Screw, csk. 4BA VOLTMETER	1	-	P	
	Attachment of voltmeter to panel				
6A/4246 A33/B20	Plate, adaptor Screw, csk. 4BA	1 4	- -	L C	
	PANEL Coaming, Assembly (Mod 5137) (EB8.81.3463)	-	-	-	ED1/3 R
	Spares for:				
EB8.81.5715	COVER, switch, S/P	1	-	C	ED1/4
EB8.81.5717	COVER, switch, S/P	1	-	C	ED1/5
5L/9951271	FILAMENT, 28V 3.5W	3	-	C	
5L/9959118	FILAMENT midget, 28V .04 amp	7	-	C	
5L/9959122	FILAMENT, 28V, 2W	5	-	C	
EB8.81.3463/A	LABEL (Pre Mod 5137)	1	-	C	
	Attachment of label to panel				
AS2230/203	Rivet	2	-	C	
	LAMP, type 44 CFP (Pre Mod 5137)	1	-	-	R
Thorn PPL120	LAMPHOLDER, plastec panel, c/w shroud	7	-	L	R
Rotax H4301/1	LAMP, fire warning	3	-	L	
	Attachment of firewarning lamp to panel				R
A31/A14 AGS2035/A	Screw, 6BA Washer, shakeproof, 6BA	2 2	- -	C C	R

EQUIPMENT
INSTRUMENT AND PANELS

Part No.	Description	No. off	Material Specification	Class of Eqpt M.R. or L.M.	Plate						
						1	2	3	4	5	6
	Consisting of:										
EB8.81.1921	KEY, switch (Pre Mod 5167)	1	DTD166	C	ED1/11						
EB8.81.1919	KNOB, switch (Pre Mod 5167)	1	L65	C	ED1/12						
SP41/C	LOCKWASHER, tab (Pre Mod 5167)	1	-	C							
EB8.81.1927	NUT, 2BA (Make from Ref 28M/16507) (Pre Mod 5167)	1	-	LM							
N.S.F. 8834-B103 Dowty	SWITCH (Pre Mod 5167)	1	-	L							R
AS10512C-5P2	SWITCH, DP (Mod 5167)	6	-	L							
5CW/4612	SWITCH, type 8B No 1	1	-	L							
5CW/6429	SWITCH, SP changeover	3	-	L							
5CW/6432	SWITCH, SP changeover	1	-	L							
5CW/6435	SWITCH, DP changeover	3	-	L							
N.S.F. 8810-B109	SWITCH, tumbler	1	-	L							R
	Attachment of switch to panel										
A33/B10 Thorn	Screw, 4BA	4	-	C							
80/10/0098	TERMINAL, earth	2	-	C							
5CW/4835	TOGGLE, switch	1	-	L							
	Attachment of toggle to switch										
A33/A6	Screw, 6BA	2	-	C							
	PANEL, Console, Forward, Assembly (EB8.80.93)	-	-	-	ED1/13						R
	Spares for:										
EB8.81.5717	COVER, switch, S/P (Pre Mod 5000 ALT/SB/9/009)	4	-	C	ED1/14						
5L/9959118	FILAMENT, midget 28V.04 amp	3	-	C							
PPL120	LAMPHOLDER, plastec panel c/w shroud	4	-	L							
Thorn	PANEL, "TRANSLITE"	1	-	L	ED1/15						R
P565x1	SWITCH, lever	1	-	P							
5CW/6264	Attachment of lever switch to panel										
A32/B20	Screw, 4BA	1	-	C							
A32/B32	Screw, 4BA	1	-	C							
Dowty											
AS10512M-1	SHROUD, switch (Mod 5000 ALT/SB/9/009)	4	-	C	ED1/16						R
N.S.F. 8810-B109	SWITCH, tumbler (Pre Mod 5000 ALT/SB/9/009)	4	-	L							R
Dowty											
AS10512A-2	SWITCH, tumbler (Mod 5000 ALT/SB/9/009)	4	-	L							
	Attachment of tumbler switch to panel										
EEAS200	Washer, locking	AR	-	C							
	SWITCH, Assembly (Mod 3720) (EB8.80.4045)	-	-	-							R

EQUIPMENT
INSTRUMENT AND PANELS

Part No.	Description	No. off	Material Specification	Class of Eqpt M.R. or L.M.	Plate
	Spares for:				
EB8.80.4051	BAR, connecting	1	L72	C	
5CW/4401181	COVER, switch	3	MAM 1701A	C	
EB8.81.1921	KEY, switch	1	DTD166	C	
EB8.80.4047	KNOB, switch	2	L65	C	
EB8.80.4049	KNOB, switch	1	L65	C	
EB8.81.1927	NUT, 2BA (Make from 28M/16507)	3	-	LM	
A41/B14	SCREW	2	-	C	
N.S.F.					
8824-B118	SWITCH, double pole	3	-	C	
SP41/C	WASHER	3	-	C	
EB8.80.4061	SWITCH, Lock (Mod 3720)	1	-	L	
Thorn					
80/10/0098	TERMINAL, earth	2	-	C	
	PANEL, Dimmer Console, Starboard Assembly (EB8.80.2221)	-	-	-	ED2/6
	Spares for:				
EB8.81.5717	COVER, switch S/P	1	-	C	ED2/7
5L/9959118	FILAMENT, miniature, 28V, 04. amp	7	-	C	
EB8.81.2345	FLAP, spring group	1	-	C	ED2/8
SP40/A6	GROMMET, rubber	1	-	C	
Thorn					
PPL120	LAMPHOLDER, plastec panel c/w shroud	7	-	L	
Thorn					
P538x3	PANEL, "TRANSLITE"	1	-	C	ED2/9
N.S.F.					
8810-B109	SWITCH, tumbler (Mod 3716 Pre Mod 5000 ALT/SB/9/009)	2	-	L	
Dowty					
AS10512A-2	SWITCH, tumbler (Mod 5000 ALT/SB/9/009)	2	-	L	
	Attachment of switch to panel				
EEAS200	Washer, locking	AR	-	C	
5CW/6604	SWITCH, dimmer, double ganged	2	-	L	
5CW/6607	SWITCH, dimmer, double ganged	1	-	L	
	Attachment of dimmer switch to panel				
AGS2001/A4	Nut, stiff, 6BA	4	-	C	
A44/A10	Screw, 6BA	4	-	C	
SP25/A	Washer, 6BA	4	-	C	
5CW/6608	SWITCH, dimmer double ganged	1	-	L	
Berco					
L50/G2	SWITCH, dimmer. double ganged (Consisting of 1 type L50 pattern No.DT15 and 1 type L50 pattern No.DT30)	1	-	P	
	Attachment of dimmer switch to panel				
AGS2001/B4	Nut, stiff, 4BA	4	-	C	
A44/B10	Screw, 4BA	4	-	C	
SP25/B	Washer, 4BA	4	-	C	
5CW/5767	SWITCH, dimmer, Type R.	1	-	L	

EQUIPMENT
INSTRUMENT AND PANELS

Part No.	Description	No. off	Material Specification	Class of Eqpt M.R. or L.M.	Plate							
						1	2	3	4	5	6	
	Attachment of dimmer switch to panel											
A27/AP	Nut, plain, 6BA	3	-	C								
A36/A20	Screw, 6BA	3	-	C								
AGS2035/A	Washer, shakeproof, 6BA	3	-	C								
Thorn	TERMINAL, earth	2	-	C								
80/10/0098	PANEL, Fuel Assembly (Mod 3096, Mod 5137, Mod 5000 ALT/SB/9/009, Pre Mod 5478) (EB8.80.3727)	-	-	-	ED2/10							R
	PANEL, Fuel, Assembly (Mod 5478/B and /C, Pre AS5381) (EB8.80.3727x14)	-	-	-								R
	PANEL, Fuel, Assembly (AS5381) (EB8.80.3727x15)	-	-	-								R
	Spares for:											
EB8.80.223	BAR, locking	2	S91	C	ED2/11							
	Attachment of locking bar to quadrant											
EB8.80.275	Pin, locking bar	1	S91	C	ED2/12							
EB8.80.4157	BRACKET, mounting	1	DTD683	C								
EB8.80.4158	BRACKET, mounting	1	DTD683	C								
EB8.80.213	CASTOR, group	4	-	C	ED2/13							
	Attachment of castor to panel structure											
SP90/C5	Pin, split, 1/16 in. dia.	1	-	C								
EB8.80.203	COVER, panel	1	Glasscloth	C	ED2/14							
	Attachment of panel cover to structure											
AS1242/1/2B	Bolt, csk, 4BA	1	-	C								R
AS1248/1/2B	Bolt, 4BA	5	-	C								R
AS1248/1B	Bolt, 4BA	6	-	C								
EB8.81.5713	COVER, switch, D/P (Pre Mod 5000 ALT/SB/9/009)	1	-	C	ED2/15							
EB8.81.5717	COVER, switch, S/P (Pre Mod 5000 ALT/SB/9/009)	1	-	C	ED2/16							
5L/9959118	FILAMENT, miniature, 28V, .04 amp	19	-	C								
6A/3856	GAUGE, fuel contents	1	-	P								
6A/3868	GAUGE, fuel contents	1	-	P								
6A/3878	GAUGE, fuel contents	2	-	P								
6A/5853	GAUGE, fuel contents	1	-	P								
	Attachment of fuel contents gauge to panel											
A25/B24	Screw, 4BA	4	-	C								
Hellerman	GROMMET (Mod 5478/B satisfied by SEM/CAN/099/STC)	1	-	C								
4646/C	GUARD, switch (Mod 4379)	2	L72	C								
EB8.82.2303	KNOB, switch (Pre Mod 5137)	1	-	C								
Z970179	LABEL, switch (Mod 4379)	1	Plasteck	C								
EB8.82.2305												

EQUIPMENT
INSTRUMENT AND PANELS

Part No.	Description	No. off	Material Specification	Class of Eqpt M.R. or L.M.	Plate						
						1	2	3	4	5	6
Thorn PPL120	LAMPHOLDER, plasteck, panel, c/w shroud	19	-	L							
EB8.81.5265	LOCK, switch, fuel cock	1	-	C	ED2/17						
	Attachment of switch to panel										
AGS2001/A1	Nut, stiff, 6BA	2	-	C							
A33/A16	Screw, csk. 6BA	2	-	C							
10AJ/132	MOUNTING, type 945	4	-	L							
	Attachments of mounting to brackets										
A25/7B	Bolt, 4BA	1	-	C							
AGS2001/B1	Nut, stiff, 4BA	5	-	C							
A31/B14	Screw, 4BA	1	-	C							
10A/19429	Washer, check	1	-	C							
EB8.80.4159	PACKING,	2	L72	C							
	PANEL, "Translite" aerial tone and oak switch (Mod 4084) (EB8.80.4147)	1	-	L							
Thorn PI327x2	PANEL, "Translite" press to mute (Pre Mod 4084)	1	-	L	ED2/18						R
Thorn PI317x2	PANEL, "Translite", aerial, tone and oak switch (Pre Mod 4084)	1	-	L	ED2/19						R
Thorn PI318x2	PANEL, "Translite", H.F. selector switch	1	-	L	ED2/20						R
Thorn PI319x2	PANEL, "Translite", fuel fixed	1	-	L	ED2/21						R
Thorn PI320x2	PANEL, "Translite", fuel gauge (Modified by EB8.80.4025)	1	-	L	ED2/22						R
EB8.80.279	PIN, quadrant	1	S91	C	ED2/23						
CZ.48995	PLUG	1	-	C							
CZ.66969	PLUG, 9 pin.	1	-	C							
CZ.49112	PLUG, fixed, 12 way (Plessey)	1	-	C							
D5194	SHROUD, push switch	2	-	C							
EB8.80.221	SPRING, compression, castor	4	DTD215	C	ED2/24						
EB8.80.277	SPRING, override	1	DTD215	C	ED2/25						
Dowty AS10512M-2	SHROUD, switch (Mod 5000 ALT/SB/9/009)	1	-	C	ED2/26						
Dowty AS10512M-1	SHROUD, switch (Mod 5000) ALT/SB/9/009 and Mod 5478/B (Satisfied by SEM/CAN/099/STC)	8	-	C	ED2/27						
Dowty C5162Y Mk.3	SWITCH, push, type B	2	-	L							
D.M.L.57535	SWITCH, oak, selector	1	-	L							
5CW/6430	SWITCH, tumbler (Pre Mod 5478/C)	1	-	L							
XD781	SWITCH, tumbler (Mod 5478/C satisfied by SRIM 2903)	1	-	L							R

EQUIPMENT
INSTRUMENT AND PANELS

Part No.	Description	No. off	Material Specification	Class of Eqpt M.R. or L.M.	Plate						
						1	2	3	4	5	6
N.S.F. 8810-B109	SWITCH, tumbler (Pre Mod 5000 ALT/SB/9/009)	1	-	L							
Dowty AS10512A-2	SWITCH, tumbler (Mod 5000) ALT/SB/9/009 and Mod 5478/B (Satisfied by SEM/CAN/099/STC)	9	-	L							R
5CW/5270	SWITCH, tumbler (Pre Mod 5000 ALT/SB/9/009)	1	-	L							
N.S.F. 8824-B107	SWITCH, tumbler (Pre Mod 5000 ALT/SB/9/009)	2	-	L							
Dowty AS10512C-1	SWITCH, tumbler (Mod 5000 ALT/SB/9/009)	2	-	L							
	Attachment of switch to panel										
EEAS200	Washer, locking	13	-	C							R
EB7.81.259	Washer, spacing	39	-	C	ED2/28						
Thorn 80/10/0098	TERMINAL, earth	2	-	C							
	PANEL, Limit Switch Assembly (EB8.80.105)	-	-	-	ED1/17						R
	Spares for:										
5L/9959118	FILAMENT, miniature, 28V, .04 amp	4	-	C							
Thorn PPL120	LAMPHOLDER, plasteck panel, c/w shroud	4	-	L							R
EB8.80.225	QUADRANT, assembly	1	-	C							
Thorn 80/10/0098	TERMINAL, earth	2	-	C							
	PANEL, Main Instrument, Assembly (Mod 4990 and Mod 5000) ALT/SB/9/009 (EB8.80.4305)	-	-	-	ED1/18						R
	Spares for:										
L82621-04-010	ALTIMETER, servo controlled type 29B (Mod 4404)	1	-	P							
	Attachment of altimeter to mooring plate										R
A204/B36	Screw, pan hd. 6-32 UNC (Mod 4404)	4	-	C							
5X/3181	BLOCK, terminal, 20-way	1	-	L							
	Attachment of terminal block to panel										
A45/B28	Screw, 4BA	2	-	C							
Smiths 6A/4833	CLOCK, MK.5A	1	-	P							
EB8.81.5717	COVER, switch S/P	1	-	C	ED1/19						

EQUIPMENT
INSTRUMENT AND PANELS

Part No.	Description	No. off	Material Specification	Class of Eqpt M.R. or L.M.	Plate
5X/9149643	COVER, terminal block 20 way	1	-	C	
5L/9951110	FILAMENT 6V.24W	AR	-	C	
5L/9959101	FILAMENT (Mod 5478W satisfied by CM/CAN/0573/STC)	2	-	C	
5L/9951273 Thorn	FILAMENT, 28V, 3.5W	4	-	C	
5L/9959118	FILAMENT, midget, 28V, .04 amp	54	-	C	
6A/5948	FLOWMETER, fuel	2	-	P	
	Attachment of fuel flowmeter to panel				
SA21284	Clamp securing (Post SA.4897)	1	-	C	
6A/387	HOLDER, correction card	1	-	C	
	Attachment of card holder to panel				
AS2229/304	Rivet, 3/32 in. dia	4	-	C	
6A/4337796	HORIZON, gyro Mk 3 (Pre Mod 5162)	1	-	P	
6A/4338176	HORIZON, gyro Mk 4 (Mod 5162)	1	-	P	
	Attachment of gyro to panel				
A44/C28	Screw, 2BA	3	-	C	
6A/4722	INDICATOR, air speed (Pre Mod 4966)	1	-	P	
	Attachment of air speed indicator to panel				
AGS2001/C4	Nut, stiff, 2BA	4	-	C	
A44/C48	Screw, 2BA	4	-	C	
AS2807/5/070	Tube, distance, 20 SWG	4	T45	LM	
6A/3360	INDICATOR air speed (Mod 4966 satisfied by CM/CAN/0244/NEAF)	4	-	L	
5CZ/5003	INDICATOR, electro magnetic, type C1	4	-	P	
6A/5845	INDICATOR, rate of climb	1	-	P	
6A/3953	INDICATOR, turn and slip	1	-	P	
10Q/16335	INDICATOR, tacan repeater type 9547 (MOD 4365)	1	-	P	
Louis Newmark 8528	INDICATOR, remote pilots tans-type 80445A	1	-	-	
Sangamo Weston S193/6/13	INDICATOR, combined trim	1	-	P	
H4702/2	KNOB, (Mod 5478 satisfied by CM/CAN/0573/STC)	2	-	C	
EB8.83.3034	LABEL, (Mod 4407)	1	-	C	
38CFP	LAMP, warning, red	AR	-	L	
H2803	LAMP, warning, green	1	-	L	
H2805	LAMP, warning, amber	1	-	L	
EB8.80.4079	LAMP, Warning, Assembly (Mod 3720)	-	-	-	
	Spares for:				
EB8.80.4085	Lamp	1	-	L	
H3505/1	LAMPHOLDER (Mod 5478/W satisfied by CM/CAN/0573/STC)	2	-	L	
Thorn 80/10/0678 (Red)	LAMPHOLDER, pillar	2	-	L	
Thorn 80/10/0855	LAMPHOLDER, pillar	22	-	L	

EQUIPMENT
INSTRUMENT AND PANELS

Part No.	Description	No. off	Material Specification	Class of Eqpt M.R. or L.M.	Plate
5CX/5301	LIGHTING, bridge, 2BA	1	-	L	
5CX/5302	LIGHTING, bridge, 2BA	1	-	L	
5CX/5303	LIGHTING, bridge, 4BA	10	-	L	
01-0461	LIGHTING, bridge, 4BA	1	-	L	
5CX/5308	LIGHTING, bridge, 2BA	11	-	L	
6A/5943	MACHMETER, Mk 2A	1	-	P	
6A/5305 #	PLATE, adaptor (Mod 4966)	1	-	C	
L84380-00-000	PLATE, mooring (Mod 4404)	1	-	L	
5CZ/5848	POTENTIOMETER, type PV 2	2	-	P	
Dowty AS10512A/6	SWITCH (Mod 4407)	1	-	L	
D5194	SHROUD, push button	1	-	C	
5CW/5058	SWITCH, push, type C	1	-	L	
	Attachment of push switch to panel				
A47/Z	Nut, 8BA	2	-	C	
A32/Z10	Screw, 8BA	2	-	C	
N.S.F. 8810-B109	SWITCH, tumbler (Pre Mod 5000 ALT/SB/9/009)	1	-	L	
Dowty AS10512A-2	SWITCH, tumbler (Mod 5000 ALT/SB/9/009)	1	-	L	
	Attachment of tumbler switch to panel				
EB7.81.259	Washer, spacing	2	DTD610	C	ED1/20
6A/8910	TACHOMETER, engine speed	2	-	P	
	Attachment of engine speed tachometer to panel				
SA21284	CLAMP, securing (SA 4897)	1	-	C	
6A/4723	THERMOMETER, jet pipe temperature	2	-	P	
	Attachment of thermometer to panel				
SA21284	Clamp, securing (SA 4897)	1	-	C	
5Q/107	VOLTMETER, 0-35V	1	-	P	

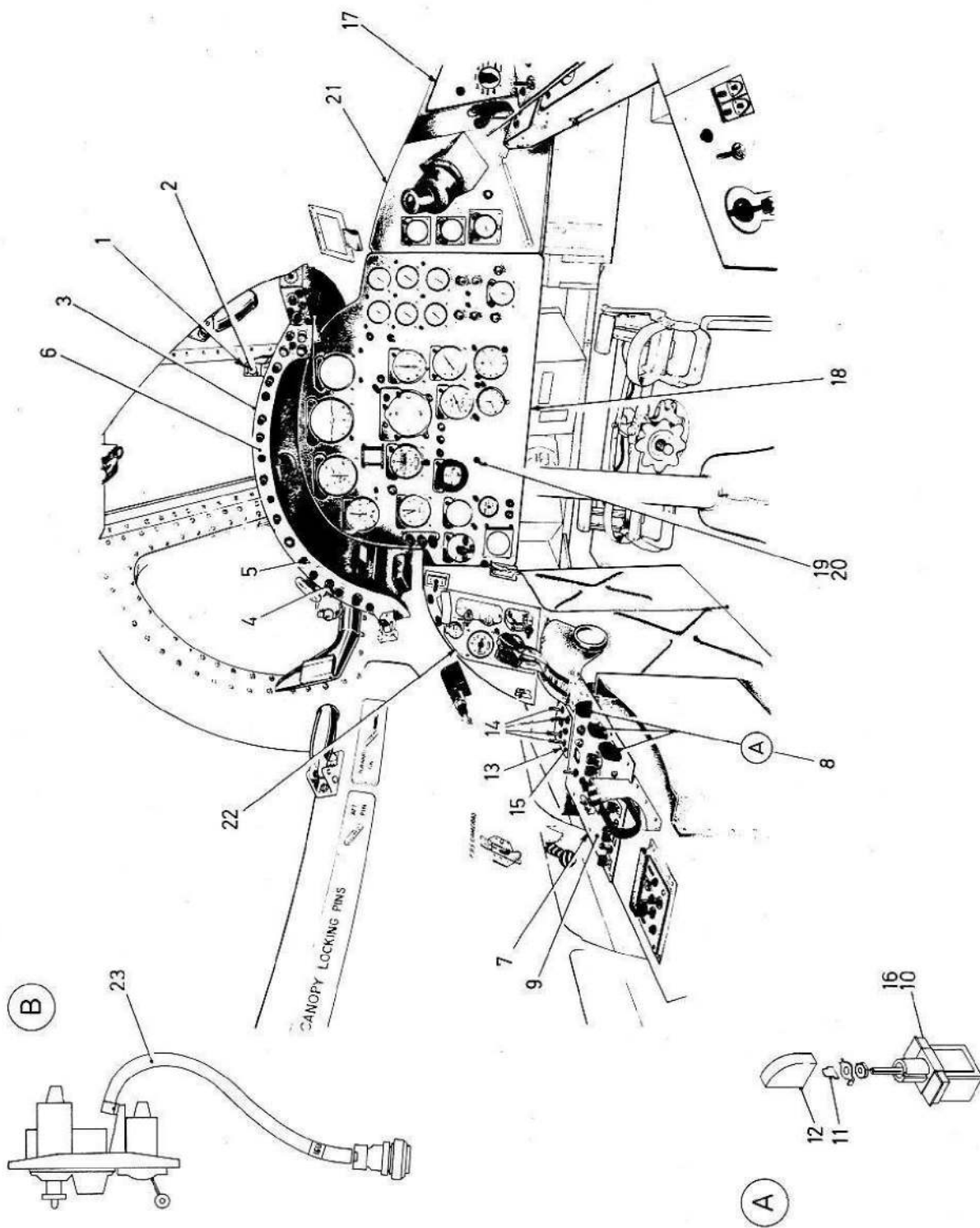
EQUIPMENT
INSTRUMENT AND PANELS

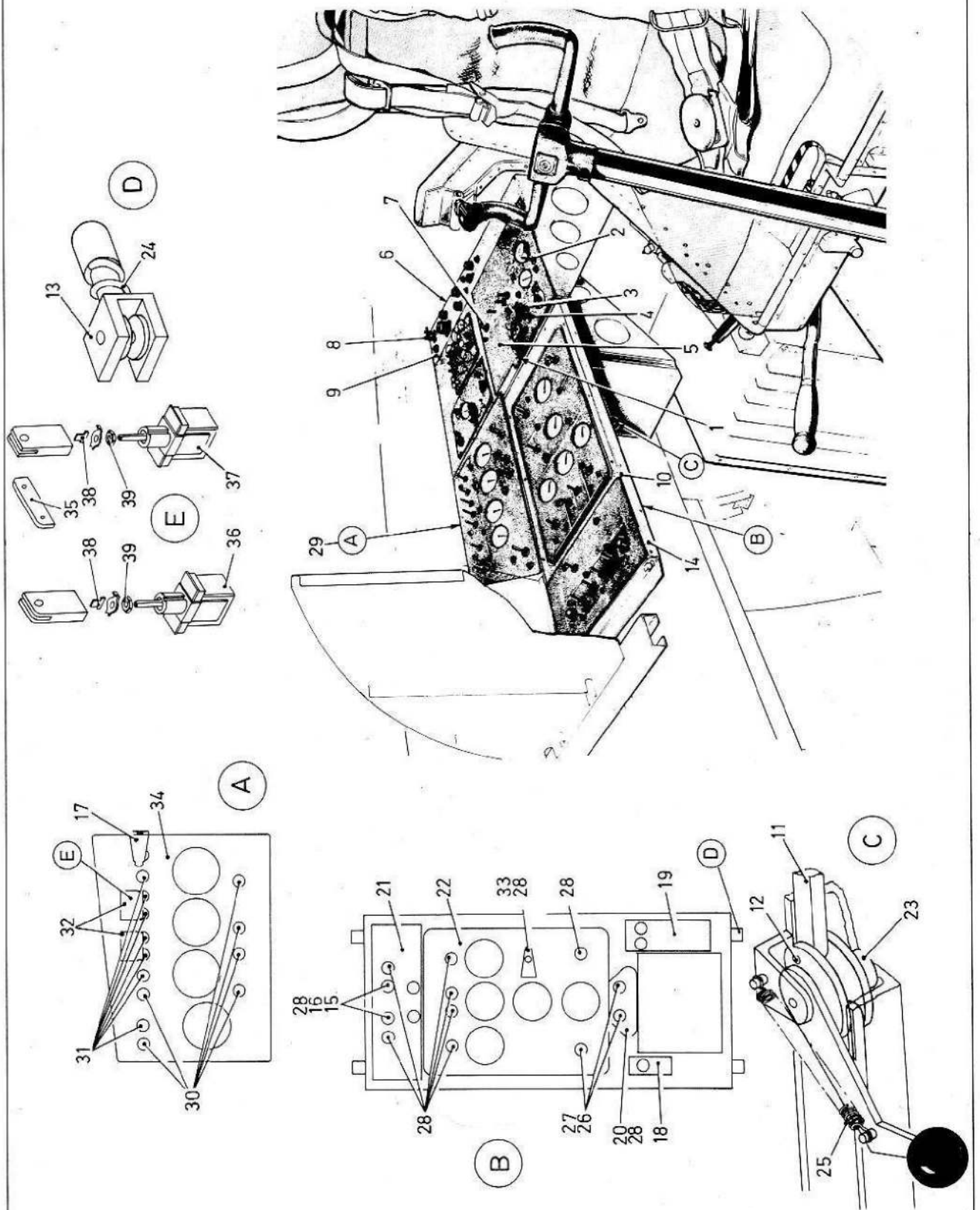
Part No.	Description	No. off	Material Specification	Class of Eqpt M.R. or L.M.	Plate						
						1	2	3	4	5	6
	PANEL, Pilot's Instrument, Starboard (EB8.80.2167)	-	-	-	ED1/21						
	Spares for:										
Thorn 80/10/1190	BRIDGE, lighting, type D, oxygen gauge	2	-	L							
5L/9959118 6D/1615	FILAMENT, miniature, 28V, .04 amp. GAUGE, pressure, oxygen, Mk. 3	6	-	C							
	Attachment of gauge to panel	2	-	P							
A44/B12	Screw, 4BA	2	-	C							
	PANEL, Take Off Assembly (EB8.80.2141)	-	-	-	ED2/29						R
	Spares for:										
6A/4245	ALTIMETER, Mk.21, fluorescent	1	-	P							
	Attachment of altimeter to panel										
SA21284	Clamp, securing (SA 4897)	1	-	C							R
EB8.81.5713	COVER, switch, D/P (Pre Mod 5000 ALT SB/9/009 Pre Mod 5481)	6	-	C	ED2/30						R
EB8.81.5717	COVER, switch, S/P (Pre Mod 5000 ALT SB/9/009 Pre Mod 5481)	7	-	C	ED2/31						R
EB8.81.5717	COVER, switch, S/P (Mod 5481)	6	-	C							R
EB8.81.5713	COVER, switch, D/P (Mod 5481)	7	-	C							R
Thorn 5L/9959118 Smiths 505FL	FILAMENT, miniature, 28V, .04 amp.	12	-	C							
	INDICATOR, position, air valve	1	-	P							
	Attachment of indicator to panel										
A33/B24 Thorn PPL120	Screw, csk. 4BA	4	-	C							
	LAMPHOLDER, plasteck panel, c/w shroud	12	-	L							R
EB8.80.3563	LOCK, engine switch	2	-	C	ED2/32						
EB8.81.5265	LOCK, battery switch	1	-	C	ED2/33						
	Attachment of switch lock to panel										
AGS2002/A1	Nut, stiff, 6BA	2	-	C							
A33/A16 Thorn P505x4 Dowty AS10512M-1	Screw, csk, 6BA	2	-	C							
	PANEL, "Translite"	1	-	C	ED2/34						R
	SHROUD, switch (Mod 5000 ALT/SB/9/009)	7	-	C							
Dowty AS10512M-2	SHROUD, switch (Mod 5000 ALT/SB/9/009)	6	-	C							
	SWITCH UNIT, Engine (EB8.80.3559)	-	-	-							R

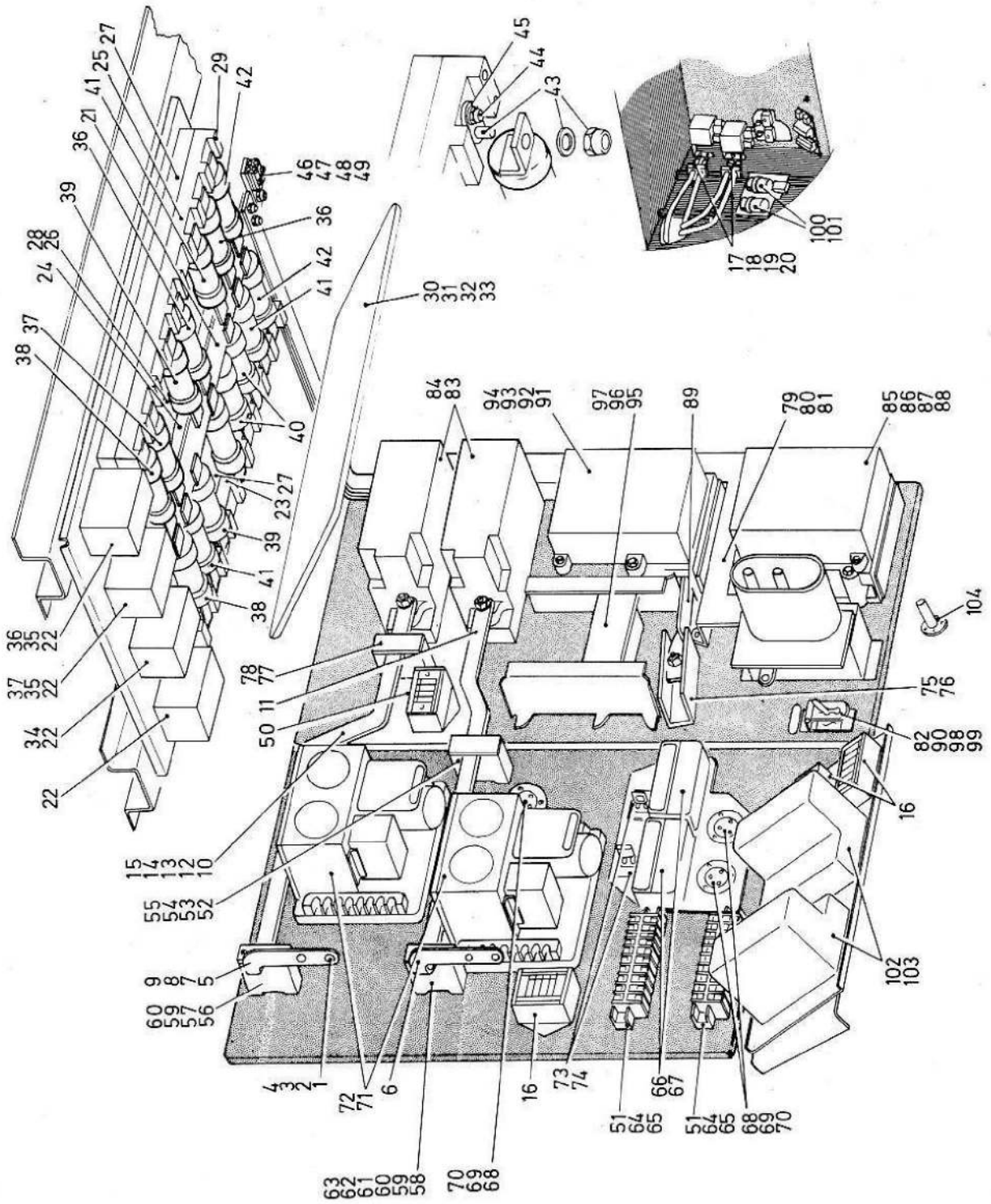
EQUIPMENT
INSTRUMENT AND PANELS

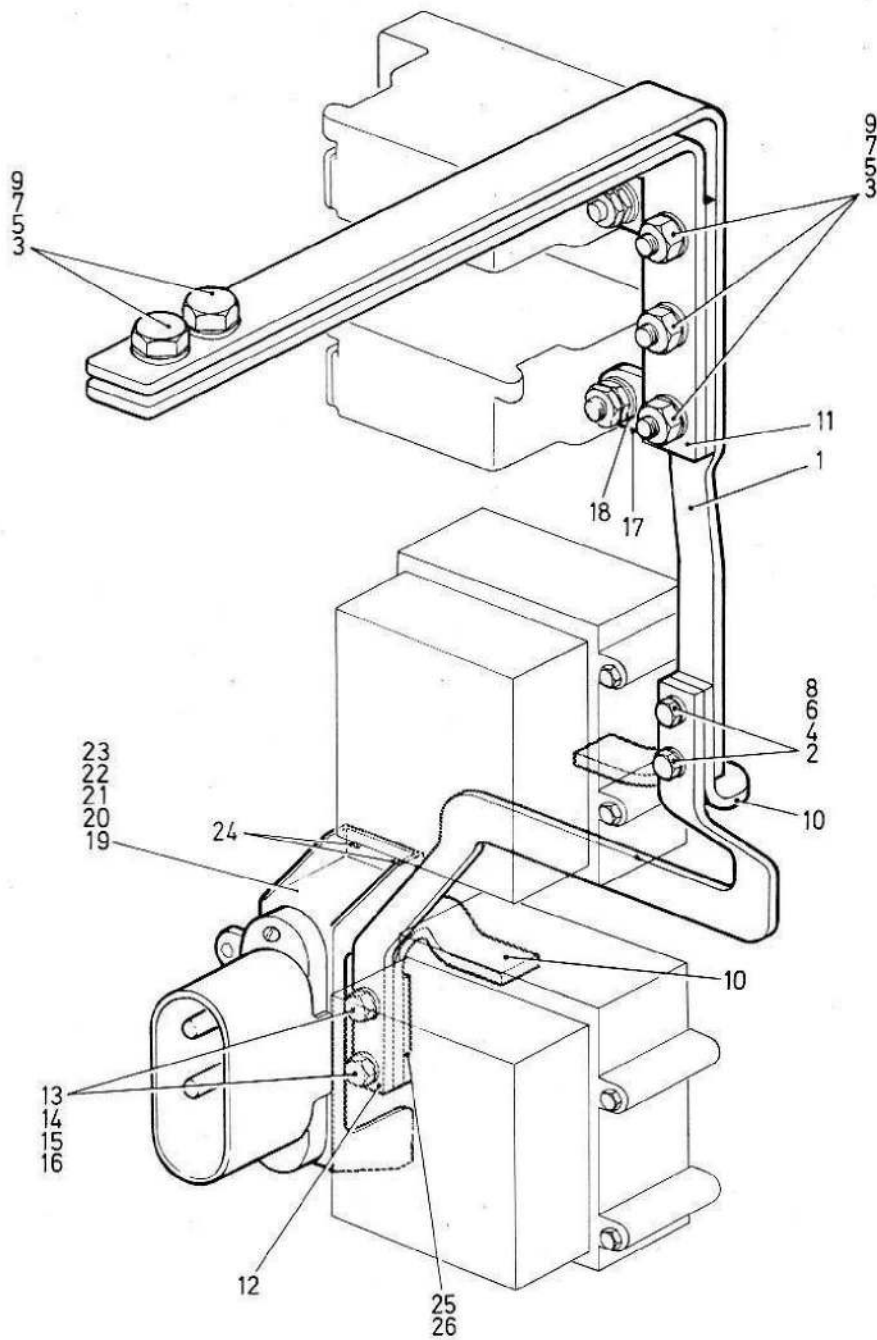
Part No.	Description	No. off	Material Specification	Class of Eqpt M.R. or L.M.	Plate							
						1	2	3	4	5	6	
	Consisting of:											
EB8.80.3561/C	PIECE, joint	2	L72	C	ED2/35							
	Attachment of joint piece to switch units											
A33/C10	Screw, csk, 2BA	2	-	C								
EB8.00.625	SWITCH UNIT, Engine	2	-	L	ED2/36							
EB8.00.626	SWITCH UNIT, Engine	2	-	L	ED2/37							
	Spares for:											
EB8.81.1921	KEY, switch	1	DTD166	C	ED2/38							
EB8.81.1927	NUT, 2BA (Make from Ref.28M/16507)	1	-	LM	ED2/39							
N.S.F. 8824-B118	SWITCH, double pole	2	-	L								
N.S.F. 8810-B109	SWITCH, tumbler (Pre Mod 5481)	6	-	L								R
N.S.F. 8810-B109	SWITCH, tumbler (Mod 5481)	5	-	L								R
N.S.F. 8824-K5	SWITCH, D/P (Mod 5481)	1	-	C								R
N.S.F. 8812-B102	SWITCH, tumbler (Pre Mod 5000 ALT/SB/9/009)	1	-	L								
Dowty AS10512A-1	SWITCH, tumbler (Mod 5000 ALT/SB/9/009)	1	-	L								
N.S.F. 8824-B107	SWITCH, tumbler (Pre Mod 5000 ALT/SB/9/009)	2	-	L								
Dowty AS10512C-1	SWITCH, tumbler (Mod 5000 ALT/SB/9/009)	2	-	L								
	Attachment of tumbler switch to panel											
EEAS200 Thorn 80/10/0098	Washer, locking	AR	-	C								
	TERMINAL, earth	2	-	C								
	PANEL, Undercarriage, Assembly (EB8.80.1349) (SA5384)	-	-	-	ED1/22							R
	Spares for:											
EA9.83.141	BRACKET, switch lock	1	-	C								R
EB8.81.1415	CABLE, 16U, group	1	-	C	ED1/23							
5K/2724	COVER, spring (SA5384)	1	-	C								
5L/9951272	FILAMENT, 28V, 3.5W	9	-	C								
5L/9959118	FILAMENT, midget, 28V, .04 amp	1	-	C								
Sangamo Weston S63/4/950	INDICATOR, flap position	1	-	P								
	Attachment of indicator to panel											R
A45/B20	Screw, 4BA	4	-	C								
5CX/4204	INDICATOR, undercarriage position	1	-	L								R

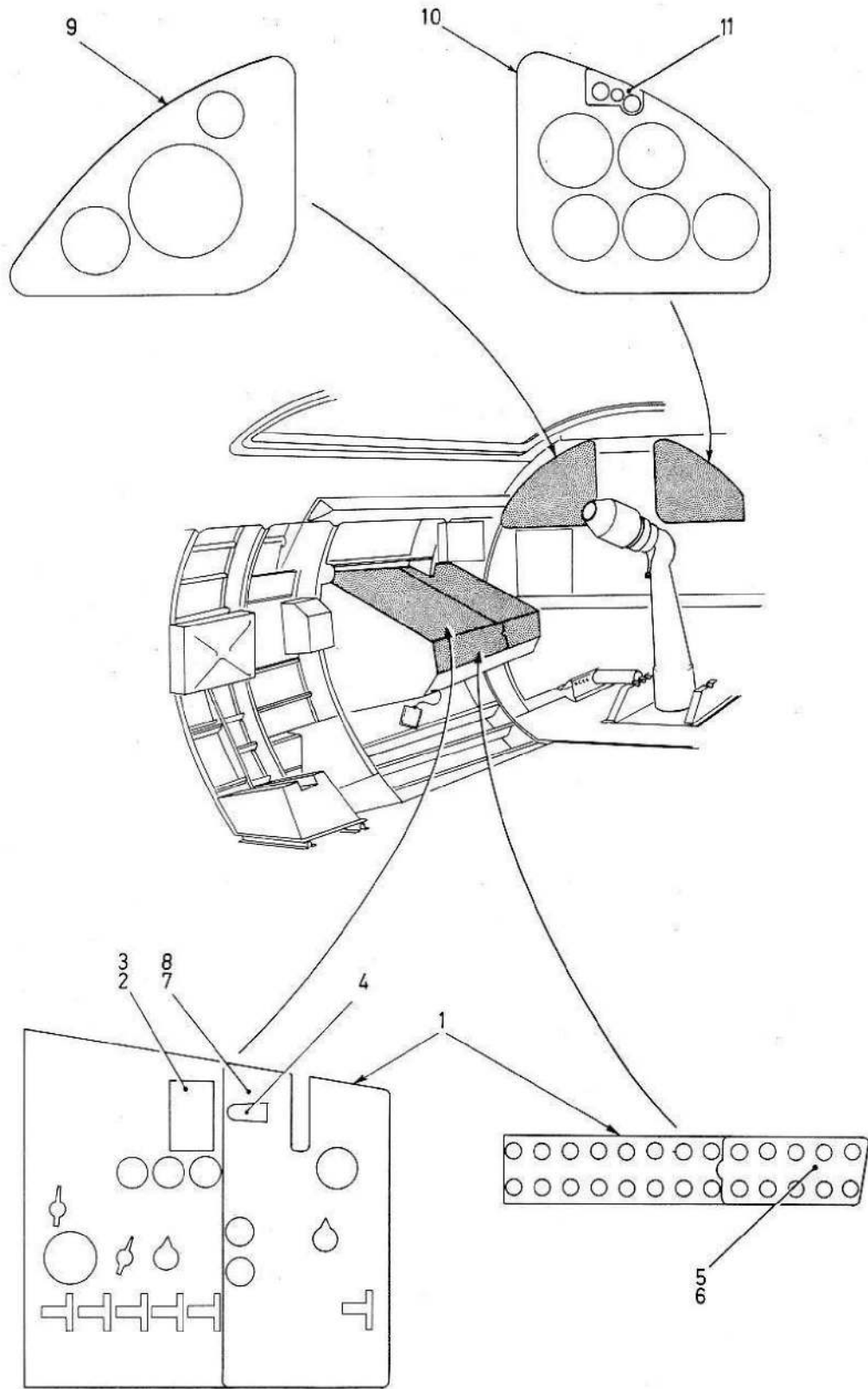
Part No.	Description	No. off	Material Specification	Class of Eqpt M.R. or L.M.	Plate										
						1	2	3	4	5	6				
A45/B20 Thorn 80/10/0328 5CW/898	Attachment of indicator to panel														
	Screw, 4BA	4	-	C											
	LAMPHOLDER, pillar SWITCH, push	1 1	- -	L L											
A44/A16 AGS2001A3 EB8.20.1357 5CW/4506	Attachment of push switch to panel														
	Screw, 6BA	4	-	C											
	Nut, stiff 6BA	4	-	C											
	SHROUD, switch SWITCH, undercarriage	1 1	- -	P P											R R
A44/B24 Dowty C5148Y	Attachment of switch and shroud to panel														R
	Screw, 4BA	2	-	C											
	SWITCH, lever	1	-	P											R
A44/B24 A44/B28 5X/2747	Attachment of lever switch to bracket EA9.83.141 and to panel														R
	Screw, 4BA	1	-	C											
	Screw, 4BA TRANSFER, "Fuel Tank Jettison"	1 1	- -	C C											

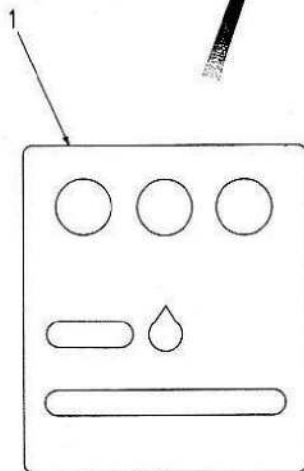
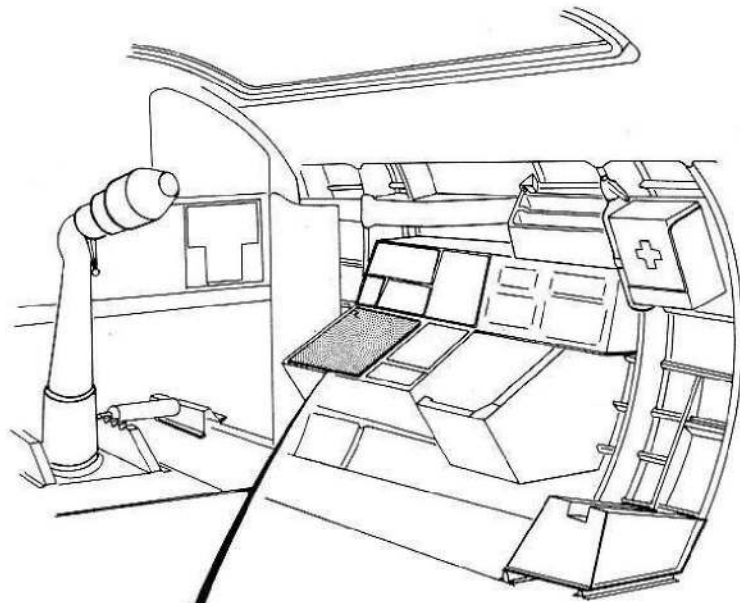












This file was downloaded
from the RTFM Library.

Link: www.scottbouch.com/rtfm

Please see site for usage terms,
and more aircraft documents.

