

FUSELAGE
FORWARD

Part No.	Description	No. off	Material Specification	Class of Eqpt M.R. or L.M.	Plate							
						1	2	3	4	5	6	
EB8.83.1637	BRACKET, Mounting, 2 Position Camera, Frames 3-4, Port and Starboard, Group (Pre Mod 4991)	2	-	C	FB1/2 FB2/1							R
EB8.83.1637x3	BRACKET, Mounting, 2 Position Camera, Frames 3-4, Port and Starboard, Group (Mod 4991)	2	-	C	FB1/3 FB2/2							R
Philidas Ltd	Spares for:											
	NUT, wing, die-cast, 1/4 in. BSF	2	-		FB2/3							R
	Attachment of wing nut to rod											
SP90/A5	Pin, split, 1/32 in. dia.	1	-	C	FB2/4							
SP16/E	Washer, 1/4 in.	1	-	C	FB2/5							
EB8.83.1581	ROD, screwed, 1/4 in. BSF	2	S96	C	FB2/6							
EB8.83.1579	TRUNNION	2	S96	C	FB2/7							
	Attachment of bracket to fuselage structure											
A25/1C	Bolt, 2BA	8	-	C	FB2/8							
EA1.10.217	BRACKET, Mounting, Nosewheel Pivot Shaft, Port Group	1	-	C	FB1/4 FB2/9							R
EA1.10.218	BRACKET, Mounting, Nosewheel Pivot Shaft, Starboard Group	1	-	L	FB1/5 FB2/10							R
	Spares for:											
EA1.10.2685	CAP	1	-	C	FB2/11							
	Attachment of cap to bracket											
A25/15J	Bolt, 3/8 in. BSF	2	-	C	FB2/12							R
A25/28J	Bolt, 3/8 in. BSF	2	-	C	FB2/13							
A27/JS	Nut, slotted, 3/8 in. BSF	4	-	C	FB2/14							
SP90/C8	Pin, split, 1/16 in. dia.	4	-	C	FB2/15							
EA3.10.2793	Washer, special	2	DTD683	C	FB2/16							
SP15/J	Washer, 3/8 in.	2	-	C	FB2/17							
SP21	NIPPLE, lubricating	1	-	C	FB2/18							R
EA1.10.217/A	SPIGOT, locating	1	S96	C	FB2/19							
	Attachment of bracket to pressure bulkhead											
EA3.10.2383	Bolt, 5/16 in. BSF	2	S96	C	FB2/20							R
A25/4E	Bolt, 1/4 in. BSF	10	-	C	FB2/21							
A26/6E	Bolt, 1/4 in. BSF	2	-	C	FB2/22							
SP16/G	Washer, 5/16 in.	2	-	C	FB2/23							
EA1.10.231	BUSH, bearing, nosewheel pivot shaft	2	DTD197	C	FB2/24							
EA1.10.939	DOOR, Nose Undercarriage, Port Group (Pre Mod 5282) (Supplied to Pt. No. EA3.00.149, for spares purposes)	1	-	L	-							R

FUSELAGE
FORWARD

Part No.	Description	No. off	Material Specification	Class of Eqpt M.R. or L.M.	Plate						
						1	2	3	4	5	6
SP47/C EA3.10.3085	Washer, spring, 2BA BRACKET, spring seating Attachment of bracket to door	4 1	- DTD683	C C	FB2/34 FB2/35						
A25/3C AGS2001/C1 SP16/C EA3.10.3193 EA3.10.3239	Bolt, 2BA Nut, stiff, 2BA Washer, 2BA HOOK, forward latch HOOK, aft, latch Attachment of latch hook to door	2 2 2 1 1	- - - - S11	C C C C C	FB2/36 FB2/37 FB2/38 FB2/39 FB2/40						
EA3.10.3375 EA1.10.971 EA1.45.989 EEAS28/23CU EA1.10.955	Packing, aft latch Pin, pivot Shim, forward latch Washer, forward latch PAD, rubber Attachment of pad to door	5 1 1 2 1	L72 S11 - - -	C C C C C	FB2/41 FB2/42 FB2/43 FB2/44 FB2/45						
A33/C32 EA1.10.949 EEAS6/C EA3.10.3211	Screw, csk. 2BA Shim Washer, cup ROD, Connecting, Door Hooks, Group Consisting of:	2 1 2 1	- Lam.Alum - -	C C C L	FB2/46 FB2/47 FB2/48 FB2/49						
EA3.10.3083 EA3.10.3207 EA3.10.3213 A27/CP A27/CPL EA3.10.3209 EA3.20.2271	COLLAR, spring adjusting FORK-END, L.H. 2BA, aft FORK-END, R.H. 2BA, forward NUT, R.H. 2BA NUT, L.H. 2BA ROD, connecting SPRING, tension Attachment of connecting rod to forward and aft hooks	1 1 1 2 1 1 1	DTD683 S96 S96 - - S96 DTD239A	C C C C C C C	FB3/10 FB3/11 FB3/12 FB3/13 FB3/14 FB3/15 FB3/16						
AGS899/1 SP4/Y/A7 SP90/C4 EA3.10.2811	Collar Pin, 5/32 in. dia. Pin, split, 1/16 in. dia. STRIP, sealing (Pre Mod 5282)(Make from Ref. 4756)	2 2 2 AR	- - - Synthetic Rubber	C C C LM	FB3/17 FB3/18 FB3/19 -						R
EA3.10.6583	SEAL, 'P' (Mod 5282 Pre Mod 5000 ALT SB/9/087)(Make from Ref 6147755)	AR	EEAS 844	LM	-						R
EB8.10.8317	SEAL, 'P' (Mod 5000 ALT SB/9/087) (Make from Ref. 6147758)	AR	EEAS 843	LM	FB2/50						R
SP80/404 SP80/407 SP80/707	Attachment of starboard door to fuselage structure Rivet, 1/8 in. dia. Rivet, 1/8 in. dia. Rivet, 5/32 in. dia.	AR AR AR	- - -	C C C	- - -						

FUSELAGE
FORWARD

Part No.	Description	No. off	Material Specification	Class of Eqpt M.R. or L.M.	Plate						
						1	2	3	4	5	6
	DOOR, Equipment Hatch, Assembly (EB8.10.7751) Consisting of:	-	-	-	FB1/8						
Martin Baker Q/MBEU/6980	CLIP, retaining, Q.R. pin (Pre Mod 5297)	1	-	C	FB3/20						R
	Attachment of clip to door										
SP80/303	Rivet, 3/32 in. dia. (Pre Mod 5297)	2	-	C	-						R
EA9.10.439	DOOR, Equipment Hatch, Group (Pre Mod 5282)(With trim allowance)	1	-	C	-						R
EA9.10.439x2	DOOR, Equipment Hatch, Group (Mod 5282)(With trim allowance)	1	-	P	FB3/21						R
	Spares for:										
AS2866/P	LOCK, Group, Flush type	1	-	L	FB3/22						
	Spares for:										
AS5382	BOLT, pivot	2	S94	C	FB7/1						
AS2552	HANDLE, Assembly, Outer, Single Handle Lock	1	-	C	-						R
AS2519	HANDLE, inner	1	-	C	-						R
AS2532	PLATE, catch	1	S3	C	FB7/2						
AS2559	SEAL, handle	1	-	C	FB7/3						
AS2558	SEAL, press button	1	-	C	FB7/4						
AS5381	SEAL, push, button	1	Rubber	C	FB7/5						
AS2524	SPIDER, Assembly, L.H.	1	-	C	-						R
AS2534	SPRING, for catch	1	DTD215	C	FB7/6						
AS2556	STUD, spring	1	S21	C	FB7/7						
	Attachment of lock to door										
A33/B12	Screw, csk, 4BA	1	-	C	-						R
EA9.10.2367	PANEL, detachable 22 swg	1	L7	LM	FB3/23						
	Attachment of panel to door										
AS1248/1/2B	Bolt, 4BA	21	-	C	FB3/24						R
EA1.10.549	ROD, end, door lock	2	L1	C	FB3/25						
	Attachment of rod end to link										
SP4/Y/B2	Pin, 3/16 in. dia.	1	-	C	FB3/26						
SP90/C4	Pin, split, 1/16 in dia.	1	-	C	FB3/27						
EA9.10.2369	STRIP, sealing (Pre Mod 5282) (Make from Ref. 4432)	1	Synthetic Rubber	LM	-						R
EB8.10.8299	SEAL, 'P' (Mod 5282)(Make from Ref 6147758)	1	EEAS 843	LM	FB3/28						R
Martin Baker MBEU/1101	SEAR, assembly (Pre Mod 5297)	1	-	-	-						R

FUSELAGE
FORWARD

Part No.	Description	No. off	Material Specification	Class of Eqpt M.R. or L.M.	Plate							
						1	2	3	4	5	6	
SP125/D	Washer	2	-	C	-							
EB8.49.351	BRACKET	1	-	LMMR	-							R
EB8.49.353	BRACKET	1	-	LMMR	-							R
EB8.49.429	GUARD, sear	1	-	C	-							R
Spares for:												
AS8609/D	NUT	1	-	C	-							
Attachment of guard to bracket												
A102/1D	Bolt, 10-32 UNF	1	-	C	-							
SP4/Z/B19	Pin, shackle	1	-	C	-							R
SP90/C8	Pin, split	1	-	C	-							
SP124/D	Washer	1	-	C	-							
EB8.49.407	DETONATOR Assy	2	-	C	-							
Spares for:												
EB8.49.409	BASE	1	-									
EB8.49.413	BRACKET, clamp	1	-	C	-							
Attachment of bracket to housing												
A102/10D	Bolt	1	-	C	-							R
AS8600D	Nut, stiff	1	-	C	-							R
SP124/D	Washer	1	-	C	-							R
EB8.49.415	HOUSING	1	-	C	-							R
F304325	HOUSING, dummy detonator	1	-	C	-							R
EB8.49.411	NUT	1	-	C	-							R
EB8.49.369	PIN, safety	1	-	C	-							R
EB8.49.417	PLUNGER	1	-	C	-							R
EB8.49.421	ROLLER	1	-	C	-							R
Attachment of roller to plunger												
SP4Y/A1	Pin, shackle	1	-	C	-							R
SP90/C5	Pin, split, 1/16 in. dia.	1	-	C	-							R
EB8.49.423	SEAR	1	-	C	-							R
EB8.49.419	SPRING	1	-	C	-							R
Attachment of detonator assy to mounting bracket												
EB8.49.431	Bolt, 1/4 in UNF	4	-	C	-							R
SP124/E	Washer	4	-	C	-							R
TUBES MDC Installation (EB8.49.435)												
Spares for:												
EB8.49.347	CHANNEL	1	-	C	-							R

FUSELAGE
FORWARD

Part No.	Description	No. off	Material Specification	Class of Eqpt M.R. or L.M.	Plate						
						1	2	3	4	5	6
	MECHANISM, Release, Navigator's Frangible Hatch Assembly (EB8.49.11)	-	-	-	FB1/11						
	Spares for:										
EB8.49.55	BAR, torque, external release	1	S96	C	FB4/15						
EB8.49.63	BEARING, stringer, torque bar	1	L72	C	FB4/16						
	Attachment of bearing to stringer 36										R
SP80/407	Rivet, 1/8 in. dia.	3	-	C	FB4/17						
EB8.49.103	BEARING, end, torque tube, port	1	Ferobestos LF3	C	FB4/18						
EB8.49.104	BEARING, end, torque tube, starboard	1	Ferobestos LF3	C	FB4/19						
	Attachment of end bearing to structure										
AS1242/2C	Bolt, csk, 2BA	2	-	C	FB4/20						
AS1242/3C	Bolt, csk. 2BA	2	-	C	FB4/21						
EB8.49.315	BOLT, lever operating (Mod 3720)	8	S96	C/MR	-						R
EB8.10.3603	BOX, Spring, Override, Univalve, Group	1	-	C	FB4/22						R
	Spares for:										
EB8.10.3609	SPRING	1	DTD124	C	FB4/23						
	Attachment of spring box to anchor bracket and pawl on univalve										R
SP4/Y/A3	Pin, 5/32 in. dia.	1	-	C	FB4/24						
SP4/Y/A4	Pin, 5/32 in. dia.	1	-	C	FB4/25						
SP90/C4	Pin, split, 1/16 in. dia.	2	-	C	FB4/26						
SP13/B	Washer, 4BA	2	-	C	FB4/27						
EB8.49.33	BRACKET, pivot, operating lever, port (Pre Mod 3720)	4	L65	C	FB4/28						R
EB8.49.197	BRACKET, pivot, operating lever, port (Mod 3720)	4	L65	C/MR	FB4/29						R
EB8.49.34	BRACKET, pivot, operating lever, starboard (Pre Mod 3720)	4	L65	C	FB4/30						R
EB8.49.198	BRACKET, pivot, operating lever, starboard (Mod 3720)	4	L65	C/MR	FB4/31						R
	Attachment of pivot bracket to longeron 5 and 37										
A25/4C	Bolt, 2BA	1	-	C	-						R
AS1242/5C	BOLT, csk. 2BA	1	-	C	-						R
A27/CP	Nut, 2BA	2	-	C	-						R
SP15/C	Washer, 2BA	2	-	C	-						R
EB8.49.195	BRACKET, (Mod 3575) Forward Retaining Port, Group	1	-	C	FB4/32						R

FUSELAGE
FORWARD

Part No.	Description	No. off	Material Specification	Class of Eqpt M.R. or L.M.	Plate						
						1	2	3	4	5	6
EB8.49.196	BRACKET, (Mod 3375) Forward Retaining Starboard Group	1	-	C	FB4/33						
EB8.49.193	Spares for: SPRING, (Mod 3575)	2	DTD215	C	FB4/34						
	Attachment of retaining bracket to frame 1A										
A25/3C	Bolt, 2BA	4	-	C	FB4/35						
A27/CP	Nut, 2BA	4	-	C	FB4/36						
SP15/C	Washer, 2BA	4	-	C	FB4/37						
EB8.49.117	BRACKET, guide, catch pin, port	1	-	C	FB4/38						
EB8.49.118	Bracket, guide, catch pin, starboard	1	-	C	FB4/39						
	Attachment of guide bracket to frame 1A										
SP80/506	Rivet, 5/32 in. dia.	3	-	C	-						R
EB8.49.175	BRACKET, locking, torque tube locking lever, port only	1	L65	C	FB4/40						R
	Attachment of locking bracket to structure										R
A25/3C	Bolt, 2BA	1	-	C	FB4/41						
A25/10C	Bolt, 2BA	1	-	C	FB4/42						
A27/CP	Nut, 2BA	2	-	C	FB4/43						
SP15/C	Washer, 2BA	2	-	C	FB4/44						
EB8.49.177	BRACKET, stop, torque tube port only (Pre Mod 3720)	1	L65	C	FB4/45						
EB8.49.223	BRACKET, stop, torque tube locking lever, port only (Mod 3720)	1	L65	C/MR	FB4/46						R
	Attachment of stop bracket to structure										
AS1242/3C	Bolt, csk. 2BA	2	-	C	FB4/47						
A27/CP	Nut, 2BA	2	-	C	FB4/48						
SP15/C	Washer, 2BA	2	-	C	FB4/49						
EB8.49.245	CABLE, Assembly (Mod 3720)	1	-	C/MR	-						R
EB8.49.243	CAM, Assembly (Mod 3720)	1	-	C/MR	-						R
EB8.49.25	COLLAR, torque bar	1	T1	C	FB4/50						R
	Attachment of collar to torque bar										R
SP90/C8	Pin, split, 1/16 in. dia	1	-	C	FB4/51						
EB8.49.67	FORK-END, tension rod, external release mechanism	1	S1	C	FB4/52						
	Attachment of fork-end to tension rod and lever on torque bar										R
A27/CP	Nut, 2BA	1	-	C	FB4/53						
SP4/Y/A4	Pin, 5/32 in. dia.	1	-	C	FB4/54						

FUSELAGE
FORWARD

Part No.	Description	No. off	Material Specification	Class of Eqpt M.R. or L.M.	Plate						
						1	2	3	4	5	6
SP90/C4 SP13/B EB8.49.99	Pin, split, 1/16 in. dia. Washer, 4BA FITTING, end and lever, torque tube, port side	1 1 1	- - L65	C C C	FB4/55 FB4/56 FB4/57						
	Attachment of end fitting to torque tube										R
A25/10C A27/CS SP15/C 30A/9437135 EB8.49.17	Bolt, 2BA Nut, slotted, 2BA Washer, 2BA Wire, locking 22 SWG HANDLE, External Release Group	2 2 2 AR 1	- - - - -	C C C C L	FB4/58 FB4/59 FB4/60 FB4/61 FB4/62						
	Spares for:										
EB8.49.81	EYE-END Attachment of release handle to fuselage skin	1	S96	C	FB4/63						
AS1242/1B EB8.49.29	Bolt, csk. 4BA LEVER, operating, attachment pin at frame 1B starboard only (Pre Mod 3720)	11 1	- S96	C C	FB4/64 FB4/65						R
EB8.49.229	LEVER, operating, attachment pin at frame 1B starboard only (Mod 3720)	1	S98	C/MR	FB4/66						R
EB8.49.31	LEVER, operating, attachment pin, port (Pre Mod 3720)	4	S96	C	FB4/67						R
EB8.49.313	LEVER, operating, attachment pin, port (Mod 3720)	4	S98	C/MR	FB4/68						R
EB8.49.32	LEVER, operating, attachment pin, starboard (Pre Mod 3720)	3	S96	C	FB4/69						R
EB8.49.314	LEVER, operating, attachment pin, starboard (Mod 3720) Attachment of operating lever to pivot bracket	3	S98	C/MR	FB4/70						R
A27/ET EB8.49.27 EB8.49.199 SP15/E EB8.49.57	Nut, lock, 1/4 in. BSF Pin, pivot (Pre Mod 3720) Pin, pivot (Mod 3720) Washer, 1/4 in. LEVER, torque bar, external release handle	1 1 1 1 1	- S1 S98 - S96	C C C C C	FB4/71 FB4/72 FB4/73 FB4/74 FB4/75						R
EB8.49.59	LEVER, torque bar, external release handle Attachment of lever to torque bar	1	L64	C	FB4/76						R
A25/8C A27/CS EB8.49.23 SP90/C6 SP15/C	Bolt, 2BA Nut, slotted 2BA Spacer Pin, split, 1/16 in. dia. Washer, 2BA	1 1 1 1 1	- - T1 - -	C C C C C	FB4/77 FB4/78 FB4/79 FB4/80 FB4/81						

FUSELAGE
FORWARD

Part No.	Description	No. off	Material Specification	Class of Eqpt M.R. or L.M.	Plate						
						1	2	3	4	5	6
EB8.49.139	LEVER, operating, micro switch	1	L64	C	FB4/82						
	Attachment of lever to locating pin										R
SP90/C4	Pin, split, 1/16 in. dia.	1	-	C	FB4/83						
EB8.49.41	Spring	1	DTD215	C	FB4/84						
SP15/C	Washer, 2BA	1	-	C	FB4/85						
EB8.49.171	LEVER, Locking Torque Tube Group	1	-	C	FB4/86						R
	Spares for:										
EB8.49.181	SPRING	1	DTD215	C	FB4/87						
	Attachment of locking lever to torque tube										
A25/13C	Bolt, 2BA	1	-	C	FB4/88						
A27/CS	Nut, slotted 2BA	1	-	C	FB4/89						
SP90/C6	Pin, split, 1/16 in. dia	1	-	C	FB4/90						
SP15/C	Washer, 2BA	1	-	C	FB4/91						
EB8.49.95	PAWL, univalve	1	L65	C	FB4/92						
	Attachment of pawl to univalve										
A25/7C	Bolt, 2BA	1	-	C	FB4/93						
A27/CP	Nut, 2BA	1	-	C	FB4/94						
SP15/C	Washer, 2BA	1	-	C	FB4/95						
EB8.49.137	PAWL, microswitch	1	L64	C	FB4/96						
	Attachment of pawl to univalve pawl										R
SP4/Y/A11	Pin, 5/32 in. dia	1	-	C	FB4/97						
SP90/C4	Pin, split, 1/16 in. dia.	1	-	C	FB4/98						
SP13/B	Washer, 4BA	1	-	C	FB4/99						
EB8.49.19	PIN, attachment, frangible hatch (Pre Mod 3720)	8	S96	C	FB4/100						
EB8.49.227	PIN, attachment (Mod 3720)	1	S96	C/MR	-						R
EB8.49.279	PIN, attachment (Mod 3720)	7	S96	C/MR	-						R
	Attachment of pin to operating lever										
SP4/Y/A7	Pin, 5/32 in. dia.	1	-	C	FB4/101						
SP90/C4	Pin, split, 1/16 in. dia.	1	-	C	FB4/102						
SP13/B	Washer, 4BA	1	-	C	FB4/103						
EB8.49.143	PIN, locating microswitch operating lever	1	S95	C	FB4/104						
	Attachment of locating pin to structure										
A27/CP	Nut, 2BA	1	-	C	FB4/105						
SP15/C	Washer, 2BA	1	-	C	FB4/106						

FUSELAGE
FORWARD

Canberra P R Mk 9

Part No.	Description	No. off	Material Specification	Class of Eqpt M.R. or L.M.	Plate							
						1	2	3	4	5	6	
EB8.49.207	TUBE, Operating, Levers between Frames 1C and 2A Port and Starboard, Group (Mod 3720)	2	-	C/MR	-							R
EB8.49.39	TUBE, Operating, Levers between Frames 2A and 3A, and Frames 3A and 4B, Port and Starboard Group (Pre Mod 3720)	4	-	C	FB4/127							R
EB8.49.209	TUBE, Operating, Levers between Frames 2A and 3A, and Frames 3A and 4B Port and Starboard, Group (Mod 3720)	4	-	C/MR	-							R
EB8.49.47	Spares for: FORK-END, screwed 2BA (Pre Mod 3720) Attachment of fork-end to operating tube	1	S1	C	FB4/128							
A27/ET	Nut, lock, 1/4 in. BSF Attachment of operating tube to operating lever	1	-	C	FB4/129							
SP4/Y/A3	Pin, 5/32 in. dia. frame 4B only	1	-	C	FB4/130							R
SP4/Y/A6	Pin, 5/32 in. dia.	2	-	C	FB4/131							
SP90/C4	Pin, split, 1/16 in. dia.	2	-	C	FB4/132							
SP13/B	Washer, 4BA	2	-	C	FB4/133							
EB8.49.13	TUBE, Torque, Group (Pre Mod 3720)	1	-	L	FB4/134							
EB8.49.309	TUBE, Torque, Group (Mod 3720)	1	-	L/MR	-							R
EB8.49.99	Spares for: FITTING, end and lever Attachment of end fitting to torque tube	1	L65	C	FB4/135							
A25/10C	Bolt, 2BA	2	-	C	FB4/136							
A27/CS	Nut, slotted, 2BA	2	-	C	FB4/137							
SP15/C	Washer, 2BA	2	-	C	FB4/138							
30A/9437135	Wire, locking 22swg.	AR	-	C	FB4/139							
EB8.49.113	RING, bearing Attachment of ring bearing to structure	1	Ferrobestos	-	FB4/140							
A25/4C	Bolt, 2BA	3	-	C	-							R
A27/CS	Nut, slotted, 2BA	3	-	C	-							R
SP90/C6	Pin, split, 1/16 in. dia.	3	-	C	-							R
SP15/C	Washer, 2BA	3	-	C	-							R

FUSELAGE
FORWARD

Part No.	Description	No. off	Material Specification	Class of Eqpt M.R. or L.M.	Plate						
						1	2	3	4	5	6
Dunlop Co. AC10236	UNIVALVE, hatch release mechanism (For spares see AP.4515C, Vol.3)	1	-	L	FB4/141						
	Attachment of univalve to mounting										
A25/6C	Bolt, 2BA	3	-	C	-						R
EB8.49.79	Packing 12swg	1	L72	C/LM	FB4/142						
SP15/C	Washer, 2BA	3	-	C	FB4/138						
30A/9437135	Wire, locking 22swg	AR	-	C	-						R
EB8.10.7361	SEAL, inflatable, navigator's frangible hatch (Pre Mod 5308)	1	-	L	FB4/143						
EB8.10.8311	SEAL, inflatable navigators frangible hatch (Mod 5308)	1	-	L	FB4/144						
	Attachment of inflatable seal to fuselage structure										
Dunlop Co. S81	Adhesive (Pre Mod 5308)	AR	-	C	-						R
Dow Corning RTV732	Adhesive (Mod 5308)	AR	-	C	-						R
EB8.10.4017x7	KEEL, Unit, Frame 1 to Pressure Bulkhead Assembly (Supplied to Pt. No. EB8.00.633 for spares purposes) (Pre Mod 5000 ALT/SB/9/015)	1	-	P	-						R
EB8.10.4017x10	KEEL, Unit, Frame 1 to Pressure Bulkhead Assembly (Supplied to Pt. No. EB8.00.804 for spares purposes) (Mod 5000 ALT/SB/9/015)	1	-	P	-						R
	Spares for:										
EB8.10.8033	BOLT, ballast weight side plates, pressure bulkhead stiffener (Mod 3215)	4	S96	C	FB3/29						
EB8.10.7457	BRACKET, strut retaining, frames 2-3, starboard only	1	-	C	-						R
	Attachment of bracket to cabin floor										
SP80/406	Rivet, 3/8 in. dia.	4	-	C	-						R
	SKINNING, AND STRUCTURE, Assembly (EB8.10.4011)	-	-	-	-						R
	Spares for:										
	BULKHEAD, Pressure, Assembly (EB8.10.19)	-	-	-	FB1/12						

FUSELAGE
FORWARD

Part No.	Description	No. off	Material Specification	Class of Eqpt M.R. or L.M.	Plate								
						1	2	3	4	5	6		
	Spares for:												
EB8.10.3597	BLOCK, anchor	1	L65	C	FB5/1								
	Attachment of anchor block to bulkhead												
A25/3C	Bolt, 2BA	2	-	C	-								R
A27/CT	Nut, lock, 2BA	2	-	C	-								R
AGS1186/3	Seal, bonded	2	-	C	-								R
EB8.10.3591	BRACKET	1	L65	C	FB5/2								
	Attachment of bracket to bulkhead												
A25/1C	Bolt, 2BA	4	-	C	-								R
A27/CT	Nut, lock, 2BA	4	-	C	-								R
AGS1186/3	Seal, bonded	4	-	C	-								R
EB8.10.3621	FAIRLEAD, by-pass valve mounting	1	LFS21	C	FB5/3								
	Attachment of fairlead to bulkhead												
SP80/509	Rivet, 5/32 in. dia.	4	-	C	-								R
EB8.10.3131	HOUSING, seal	1	L65	C	FB5/4								
	Attachment of housing to bulkhead												
AS2227/405	Rivet, 1/8 in. dia.	2	-	C	-								R
Dowty	Seal "U"	1	-	-	-								R
U.203	MOUNTING, member assembly	1	-	C	-								R
EB8.45.1771	NUT, anchor, 1/4 in. BSF	1	L65	C	FB5/5								
EB8.10.3127	Attachment of anchor nut to bulkhead												
SP80/405	Rivet, 1/8 in. dia.	2	-	C	-								R
Graviner Ltd. Type 12C473-1	DETECTOR, crashstrip	2	-	P	FB1/16								R
	Attachment of detector to keel												R
A27/BP	Nut, 4BA	22	-	C	-								R
A33/B16	Screw, csk. 4BA	22	-	C	-								R
SP15/B	Washer	22	-	C	-								R
EB8.10.4019	FRAME 1, Structure Assembly	1	-	L	-								R
	Spares for:												
EB8.10.6475	BRACKET, strut support	1	L65	C	FB1/13 FB5/6								
	Attachment of bracket to frame 1												
A25/4C	Bolt, 2BA	2	-	C	FB5/7								
AS1242/4C	Bolt, csk. 2BA	2	-	C	FB5/8								
A27/CP	Nut, 2BA	4	-	C	FB5/9								
SP13/C	Washer, 2BA	4	-	C	FB5/10								

Part No.	Description	No. off	Material Specification	Class of Eqpt M.R. or L.M.	Plate							
						1	2	3	4	5	6	
EA1.10.829x1	PLUG, Drain, Group (Pre Mod 5000 ALT/SB/9/067)	1	-	L	FB1/14							R
EA1.10.829x2	PLUG, Drain, Group (Mod 5000 ALT/SB/9/067) (Modify on issue)	1	-	LM	-							R
	Consisting of:											
EA1.10.827	HOUSING	1	L40	C	FB5/11							
SP90/E6	PIN, split, 3/32 in. dia. (Pre Mod 5000 ALT/SB/9/067)	1	-	C	FB5/12							
Geo. Angus Co. OR.12	RING, sealing	1	60' Shore P60	C	FB5/13							
EA1.10.825	SCREW, drain plug	1	L40	C	FB5/14							
	Attachment of drain plug to keel skin											
AS2230/405	Rivet, csk. 1/8 in. dia.	8	-	C	FB5/15							
	STRUCTURE, Pressure Cabin & Keel Unit (EB8.10.4009)	-	-	-	-							R
	Spares for:											
EB8.10.4901	GUIDE, bolt, lower spigot attachment	1	-	C	FB1/15							
	MECHANISM, Canopy Operating Assembly (EB8.10.2219)	-	-	-	FB1/17							
	Spares for:											
	ACTUATOR, Assembly (EB8.10.7585)	-	-	-	FB1/18							R
	Spares for:											
Bradford AE4026 Mk.2	ACTUATOR, linear	1	-	P	FB6/1							
	Attachment of actuator to mounting											
AGS899/6	Collar	1	-	C	-							R
SP4/Y/F18	Pin, 5/16 in. dia.	1	-	C	-							R
SP90/C8	Pin, split, 1/16 in. dia.	1	-	C	-							R
EB8.10.2671	BELLOWS, connecting rod, cabin sealing (Pre Mod 4816)	2	-	C	FB6/2							R
EB8.10.8233	BELLOWS, connecting rod, cabin sealing (Mod 4816)				FB6/3							R
	Attachment of bellows to connecting rod and housing on pressure bulkhead											
SP91/A	Clip, "Jubilee"	1	-	C	-							R
SP91/E	Clip, "Jubilee"	1	-	C	-							R

FUSELAGE
FORWARD

Part No.	Description	No. off	Material Specification	Class of Eqpt M.R. or L.M.	Plate
EB8.10.2673	Collar	2	LFB89	C	FB6/4
EB8.10.2629	BOX, Spring, Override, Canopy Locking, Group	1	-	C	FB5/16
	Spares for:				
EB8.10.2635	SPRING	1	DTD215	C	FB5/17
	Attachment of spring box to cross shaft lever and bulkhead mounting				
AGS899/2	Collar	2	-	C	FB5/18
SP4/Y/B6	Pin, 3/16 in. dia.	1	-	C	FB5/19
SP4/Y/B8	Pin, 3/16 in. dia.	1	-	C	FB5/20
SP90/C5	Pin, split, 1/16 in. dia.	2	-	C	FB5/21
EB8.10.3603	BOX, Spring, Override, Inflation Valve Group	1	-	C	FB5/22
	Spares for:				
EB8.10.3609	SPRING	1	DTD215	C	FB5/23
	Attachment of spring box to valve lever and bulkhead mounting				
AGS899/1	Collar	2	-	C	FB5/24
SP4/Y/A4	Pin, 5/32 in. dia.	1	-	C	FB5/25
SP4/Y/A6	Pin, 5/32 in. dia.	1	-	C	FB5/26
SP90/C6	Pin, split, 1/16 in. dia.	2	-	C	FB5/27
EB8.10.2569	BRACKET, support, cross shaft, port	1	-	C	FB6/5
EB8.10.2979	BRACKET, support, cross shaft, starboard	1	-	C	FB6/6
	Attachment of bracket to structure				
A25/2C	Bolt, 2BA	4	-	C	FB6/7
A25/3C	Bolt, 2BA	2	-	C	FB6/8
A27/CP	Nut, 2BA	6	-	C	FB6/9
SP15/C	Washer, 2BA	6	-	C	FB6/10
EB8.10.2893	BRACKET, cover support, pressure bulkhead, starboard	1	DTD124	C	FB6/11
	Attachment of bracket to pressure bulkhead				
A25/3C	Bolt, 2BA	2	-	C	FB6/12
A27/CP	Nut, 2BA	2	-	C	FB6/13
SP15/C	Washer, 2BA	2	-	C	FB6/14
EB8.10.2895	BRACKET, cover support, pressure bulkhead port	1	DTD124	C	FB6/15
	Attachment of bracket to pressure bulkhead				
A25/2B	Bolt, 4BA	1	-	C	FB6/16
A25/3C	Bolt, 2BA	2	-	C	FB6/17
A27/BP	Nut, 4BA	1	-	C	FB6/18
A27/CP	Nut, 2BA	2	-	C	FB6/19

R

Part No.	Description	No. off	Material Specification	Class of Eqpt M.R. or L.M.	Plate						
						1	2	3	4	5	6
SP15/B	Washer, 4BA	1	-	C	FB6/20						
SP15/C	Washer, 2BA	2	-	C	FB6/21						
EB8.10.2905	HOUSING, bearing, cross shaft, port	1	L65	C	FB6/22						
EB8.10.2197	HOUSING, bearing, cross shaft, starboard	1	L65	C	FB6/23						
	Attachment of bearing housing to structure										
TTS12.5	Bearing, torque tube	1	-	C	FB6/24						R
A25/2C	Bolt, 2BA	4	-	C	FB6/25						
A25/3C	Bolt, 2BA	2	-	C	-						R
A27/CP	Nut, 2BA	6	-	C	FB6/26						
SP15/C	Washer, 2BA	6	-	C	FB6/27						
EB8.10.6945	HOUSING, control rod, port	1	L16 & L54	C	FB6/28						
EB8.10.6947	HOUSING, control rod, starboard	1	L16 & L54	C	FB6/29						
	Attachment of housing to pressure bulkhead										
A25/2B	Bolt, 4BA	2	-	C	-						R
A25/2C	Bolt, 2BA	2	-	C	-						R
A25/3C	Bolt, 2BA	2	-	C	-						R
A27/BP	Nut, 4BA	2	-	C	-						R
A27/CP	Nut, 2BA	4	-	C	-						R
SP15/B	Washer, 4BA	2	-	C	-						R
SP15/C	Washer, 2BA	4	-	C	-						R
EB8.10.3785	KEY, locking pin operating	4	S97	C	FB8/1						
	Attachment of key to push rod										
EB8.10.707	Nut, lock, 1/4 in. BSP	1	S95	C	FB8/2						
EB8.10.2683	LINK, actuator, and rack, starboard side	1	L65	C	FB5/28						
EB8.10.7257	LINK, actuator, and rack, port side	1	L65	C	FB5/29						
	Attachment of links to actuator and mounting bracket on pressure bulkhead										
AGS899/4	Collar	1	-	C	FB5/30						R
A27/CS	Nut, slotted, 2BA	2	-	C	FB5/31						
SP90/C6	Pin, split, 1/16 in. dia.	1	-	C	FB5/32						
SP90/C8	Pin, split, 1/16 in. dia.	2	-	C	FB5/33						
EB8.10.3615	Spigot, actuator and links	1	S94	-	FB5/34						R
EB8.10.3567	Stud, links to bracket	1	S94	C	FB5/35						
SP15/C	Washer	2	-	C	FB5/36						
EB8.10.7259	LINK, connecting, microswitch	1	L72	C	FB5/37						
	Attachment of link to port actuator link and microswitch lever										
AGS899/1	Collar	2	-	C	FB5/38						
SP4/Y/A2	Pin, 5/32 in. dia.	1	-	C	FB5/39						
SP4/Y/A6	Pin, 5/32 in. dia.	1	-	C	FB5/40						
SP90/C8	Pin, split, 1/16 in. dia.	2	-	C	FB5/41						
SP16/B	Washer, 4BA	1	-	C	FB5/42						

FUSELAGE
FORWARD

Part No.	Description	No. off	Material Specification	Class of Eqpt M.R. or L.M.	Plate
EB8.10.1987	PIN, canopy locking, forward port and starboard and aft starboard only	3	S97	C	FB6/30
EB8.10.5057	PIN, canopy locking, aft port only	1	S97	C	FB6/31
EB8.10.713	ROD, connecting, forward locking, port, group	1	-	C	FB6/32
EB8.10.1183	ROD, connecting, aft locking, port and starboard group	2	-	C	FB6/33
EB8.10.1185	ROD, connecting, forward locking, starboard group	1	-	C	FB6/34
	Attachment of connecting rod to push rod and cross shaft lever				
AGS571/507	Bolt, shear 5/16 in BSF	2	-	C	FB6/35
AGS572/CP	Nut, slotted, thin, 5/16 in BSF	2	-	C	FB6/36
SP90/C8	Pin, split, 1/16 in dia	2	-	C	FB6/37
EB8.10.1989	ROD, push, locking mechanism, forward, port and starboard	2	S97	C	FB6/38
EB8.10.5063	ROD, push, locking mechanism, aft, port only	1	S97	C	FB6/39
	Attachment of push rod to locking mechanism				
EB8.10.5061	Fork-end	1	S97	C	FB6/40
EB8.10.5065	Grub-screw, 4BA	1	S94	C	FB6/41
EB8.10.747	Link, connecting	1	S97	C	FB6/42
A27/JT	Nut, lock, 3/8 in. BSF	1	-	C	FB6/43
EB8.10.1991	ROD, push, locking mechanism, aft starboard only	1	S97	C	FB6/44
	Attachment of push rod to locking mechanism				
EB8.10.747	Link, connecting	1	S97	C	FB6/45
A27/JT	Nut, lock, 3/8 in. BSF	1	-	C	FB6/46
EB8.10.1197	SHAFT, cross group (Mod 4826 Pre Mod 5163 Issue 3)	1	-	P	FB6/47
EB8.10.1197x5	SHAFT, cross group (Mod 5163 Issue 3)	1	-	P	FB6/48
	Spares for:				
EB8.10.3511	BOLT, stop, 1/4 in BSF	1	S94	C	FB6/49
	Attachment of stop bolt to shaft bearing fitting				
A27/ES	Nut, slotted, 1/4 in BSF	1	-	C	FB6/50
SP90/C8	Pin, split, 1/16 in dia	1	-	C	FB6/51
EB8.10.3543	Shim, 1/16 in thick	1	Lam Alum	LM	FB6/52
SP15/E	Washer, 1/4 in.	1	-	C	-
EB8.10.3513	Fitting, shaft bearing	1	DTD683	C	-

R

R

R
R

FUSELAGE
FORWARD

Part No.	Description	No. off	Material Specification	Class of Eqpt M.R. or L.M.	Plate						
						1	2	3	4	5	6
EB8.10.7253	LEVER, operating, microswitch	1	S3 7 T26	C	FB5/43						
	Attachment of lever to microswitch mounting bracket										
AGS899/2	Collar	1	-	C	FB5/44						
SP4/Y/B20	Pin, 3/16 in dia	1	-	C	FB5/45						
SP90/C8	Pin, split, 1/16 in dia	1	-	C	FB5/46						
EB8.10.7129	RACK, Assembly (Pre Mod 5163 Issue 3)	1	-	L	-						R
EB8.10.7129x4	RACK, Assembly (Mod 5163 Issue 3)	1	-	L	-						R
	Spares for:										
EB8.10.7551	PAWL, (Pre Mod 5163 Issue 3)	1	-	-	-						R
EB8.10.8235	PAWL, (Mod 5163 Issue 3)	1	-	-	-						R
EB8.15.55	SPRING	1	DTD215	C	FB5/47						
EB8.10.7255	SCREW, adjusting, microswitch	1	S1	C	FB5/48						
	Attachment of adjusting screw to operating lever										
A27/CT Dowty	Nut, lock, 2BA	1	-	C	FB5/49						
DN1322Z Mk.2 OR Dowty	SWITCH, micro (Mod 4826)	1	-	L	FB5/50						
DN1322Z Mk.3	SWITCH, micro	1	-	L	-						R
	Attachment of microswitch to mounting bracket										
A25/13B	Bolt, 4BA	2	-	C	FB5/51						R
AGS2001/B1	Nut, stiff, 4BA	2	-	C	FB5/52						
SP15/B	Washer, 4BA	2	-	C	FB5/53						
	VALVE, Inflation, Canopy Seal, Assembly (EB8.10.3589)	-	-	-	-						R
	Spares for:										
EB8.10.3595	BEARING, group	2	-	C	FB5/54						
	Attachment of bearing to mounting bracket										
A25/2C	Bolt, 2BA	2	-	C	FB5/55						
A27/C	Nut, slotted, 2BA	2	-	C	FB5/56						
SP90/C8	Pin, split, 1/16 in. dia	2	-	C	FB5/57						
SP15/C	Washer, 2BA	2	-	C	FB5/58						
EB8.10.3593	LEVER, cam operating	1	L65	C	FB5/59						
EB8.10.3601	LEVER, operating	1	L65	C	FB5/60						
SP31/H6	Pin, taper, 1/8 in dia	1	-	C	FB5/61						
EB8.10.3611	LEVER, valve operating	1	L65	C	FB5/62						
	Attachment of lever to valve										
A25/5C	Bolt, 2BA	1	-	C	FB5/63						
A27/CS	Nut, slotted, 2BA	1	-	C	FB5/64						
SP90/C8	Pin, split, 1/16 in. dia.	1	-	C	FB5/65						

FUSELAGE
FORWARD

Canberra P R Mk 9

Part No.	Description	No. off	Material Specification	Class of Eqpt M.R. or L.M.	Plate						
						1	2	3	4	5	6
SP15/C EB8.10.3587	Washer, 2BA LINK, group Attachment of link to levers	1 1	- DTD610	C C	FB5/66 FB5/67						
AGS899/1 SP4/Y/A4 SP90/C6 EB8.10.3599	Collar Pin, 5/32in dia Pin, split, 1/16 in dia SHAFT, operating (For spares see AP4515C, Vol 3)	2 2 2 1	- - - DTD124	C C C C	FB5/68 FB5/69 FB5/70 FB5/71						
Dunlop Co AC10236	UNIVALVE, seal inflation (for spares see AP4515C, Vol 3) Attachment of univalve to mounting bracket	1	-	L	FB6/53						
A25/1C SP15/C 30A/9437135	Bolt, 2BA Washer, 2BA Wire, locking 22 swg	3 3 AR	- - DTD189	C C C	FB6/54 FB6/55 FB6/56						
	MECHANISM, Shoot Bolt, Nose Lock Assembly (EB8.10.4055) Spares for:	-	-	-	FB1/19						R
EB8.10.7025	ARM, rocker, lock to univalve lever Attachment of rocker arm to mounting bracket	1	-	C	FB7/8						R R
A25/10C AGS2001/C1 EB8.10.6293 SP15/C Rose Bros RF-3 Rose Bros RF-3L	Bolt, 2BA Nut, stiff, 2BA Piece, distance Washer, 2BA BEARING, end, RH tension rod BEARING, end, LH tension rod Attachment of end bearing to lever on frame 1	1 1 1 1 1 1	- - S1 - - -	C C C C C C	FB7/9 FB7/10 FB7/11 FB7/12 FB7/13 FB7/14						
A25/5C AGS2002/C1 SP15/C EB8.10.6217 EB8.10.6239	Bolt, 2BA Nut, stiff, 2BA Washer BOLT, shoot, upper and lower spigot (Mod 3135) BOLT, shoot, lower spigot (Pre Mod 3135) Attachment of shoot bolt to lever on frame 1	1 1 1 2 1	- - - S94 S94	C C C C C	FB7/15 FB7/16 FB7/17 FB7/18 FB7/19						R R
AGS899/1 SP4/Y/A4 SP4/Y/B3 SP90/C5	Collar (Pre Mod 3135) Pin, 5/32 in. dia. (Pre Mod 3135) Pin, 3/16 in. dia. (Mod 3135) Pin, split, 1/16 in. dia.	1 1 1 1	- - - -	C C C C	FB7/20 FB7/21 FB7/22 FB7/23						

Part No.	Description	No. off	Material Specification	Class of Eqpt M.R. or L.M.	Plate						
						1	2	3	4	5	6
SP15/B	Washer, 4BA (Pre Mod 3135)	1	-	C	FB7/24						
SP15/C	Washer, 2BA (Mod 3135)	1	-	C	FB7/25						
EB8.10.6221	LEVER, idle, upper shoot bolt	1	L64	C	FB7/26						
EB8.10.6225	LEVER, idle, lower shoot bolt	1	L64	C	FB7/27						
	Attachment of idle lever to mounting bracket on frame 1										R
AS1248/7C	Bolt, 2BA	1	-	C	FB7/28						
AGS2001/C1	Nut, stiff, 2BA	1	-	C	FB7/29						
EB8.10.6911	Piece, distance	1	S1	C	FB7/30						
SP15/C	Washer, 2BA	1	-	C	FB7/31						
EB8.10.6977	LEVER, operating univalve	1	L65	C	FB7/32						
	Attachment of lever to univalve										
A25/6C	Bolt, 2BA	1	-	C	FB7/33						
AGS2001/C1	Nut, stiff, 2BA	1	-	C	FB7/34						
SP15/C	Washer, 2BA	1	-	C	FB7/35						
EB8.10.6237	LINK, lock (Pre Mod 3135)	1	L6	C	FB7/36						
	Attachment of link to lever spools										
AGS899/1	Collar	1	-	C	FB7/37						
SP4/Y/A6	Pin, 5/32 in. dia.	1	-	C	FB7/38						R
SP90/C5	Pin, split, 1/16 in. dia.	1	-	C	FB7/39						
SP15/B	Washer, 4BA	1	-	C	FB7/40						
EB8.10.7923	LINK, lower, shoot bolt	1	-	C	FB7/41						
	LOCK, Hinged Nose, Assembly (Pre Mod 3135) (EB8.10.4057)	1	-	-	-						R
	Consisting of:										
EB8.10.6867	BOLT, attachment, handle	1	S94	C	FB7/42						
EB8.10.6729	EXTENSION, inner spindle	1	S94	C	FB7/43						
EB8.10.6865	EXTENSION, outer spindle	1	S94	C	FB7/44						
AS2893	LOCK, door, flush type (Modified)	1	-	L	FB7/45						R
EB8.10.6987	PLATE, locking	1	S3	C	FB7/46						
	Attachment of lock to fuselage skin aft of frame 1A										
AS1242/1B	Bolt, csk, 4BA	11	-	C	FB7/47						
EB8.10.7873	LOCK, Hinged Nose, Flush Fitting, Group (Mod 3135)	1	-	L	-						R
	Spares for:										
EB8.10.6729	EXTENSION, inner spindle	1	S94	C	FB7/48						
EB8.10.6865	EXTENSION, outer spindle	1	S94	C	FB7/49						
EB8.10.7879	EYE-END	1	S94	C	FB7/50						
	Attachment of eye-end to spider										
AS5382	Bolt, pivot	1	S94	C	FB7/51						
AGS162/C	Washer, spring	1	-	C	FB7/52						
EB8.10.7885	HANDLE, inner	1	-	C	-						R
AS.2549	HANDLE, assembly outer	1	-	C	-						R

Part No.	Description	No. off	Material Specification	Class of Eqpt M.R. or L.M.	Plate						
						1	2	3	4	5	6
Dunlop Co. AC10236	UNIVALVE, Seal Inflation (For spares see AP4515C, Vol13)	1	-	L	FB7/81						
	Attachment of univalve to mounting bracket										
A25/1C SP47/C	Bolt, 2BA	3	-	C	FB7/82						
	Washer, spring, 2BA	3	-	C	FB7/83						
	SEAL, Inflation, Hinged Nose, Assembly (EB8.10.6435)	-	-	-	FB1/20						R
	Spares for:										
EB8.10.6439	CLIP, connection 20 swg	1	L72	LM	FB1/21						
	Attachment of clip to frame 1										
A25/1B A27/BP SP15/B EB8.10.6437	Bolt, 4BA	2	-	C	FB1/22						
	Nut, 4BA	2	-	C	FB1/23						
	Washer, 4BA	2	-	C	FB1/24						
	SEAL, inflatable, hinged nose	1	-	L	FB1/25						
	Attachment of inflatable seal to frame 1										
Dunlop Co. S81	Adhesive	AR	-	C	-						R
	SKINNING and Structure, Frame 1 to Pressure Bulkhead Assembly (EB8.10.4005)	-	-	-	-						R
	Spares for:										
EB8.10.7155	FITTING, pip pin, camera window, port and starboard	4	L64	C	FB10/1						
	Attachment of fitting to structure										
AS2230/307 EB8.10.2623	Rivet, csk. 3/32 in. dia.	4	-	C	FB10/2						
	NUT, csk. 2BA	10	S96	C	FB1/26						
	SUPPORT, Back, Navigator's Crash Seat, Assembly (EB8.16.629)	-	-	-	FB1/27						R
	Spares for:										
Newey 7/4/6 Silentbloc VF/0401 EB8.16.791	EYELET, stud and stud	6	-	-	FB8/3						R
	FASTENER, "Vibrex"	20	-	C	FB8/4						
	PANEL, access	2	L72	C	FB8/5						

FUSELAGE
FORWARD

Part No.	Description	No. off	Material Specification	Class of Eqpt M.R. or L.M.	Plate						
						1	2	3	4	5	6
EB8.10.6459	BUSH, retaining, navigator's hatch, frame 4A, port and starboard	2	S1	C	FB8/30						
	Attachment of bush to retaining bracket										
A25/8C	Bolt, 2BA	1	-	C	FB8/31						
A27/CP	Nut, 2BA	1	-	C	FB8/32						
SP15/C	Washer, 2BA	1	-	C	FB8/33						
	COAMING, navigator's hatch (Mod 5000 ALT/SB/9/036) (EB8.10.4089)	1	-	-	-						R
	RETAINERS, Navigator's Hatch, Seal, Installation (Mod 5000 ALT/SB/9/036) (EB8.10.8295)	1	-	C	-						R
	Spares for:										
EB8.10.8295/A	ANGLE, lipped sealing (Mod 5000 ALT/SB/9/036)	1	-	C	-						R
EB8.10.8295/B	Angle, lipped sealing (Mod 5000 ALT/SB/9/036)	1	-	C	-						R
EB8.10.8295/C	Angle, lipped sealing (Mod 5000 ALT/SB/9/036)	1	-	C	-						R
EB8.10.8295/D	Angle, lipped sealing (Mod 5000 ALT/SB/9/036)	1	-	C	-						R
EB8.10.8295/E	Angle, lipped sealing (Mod 5000 ALT/SB/9/036)	1	-	C	-						R
EB8.10.8295/F	Angle, lipped sealing (MOD 5000 ALT/SB/9/036)	1	-	C	-						R
EB8.10.8295/G	Angle, lipped sealing (Mod 5000 ALT/SB/9/036)	1	-	C	-						R
EB8.10.8295/H	Angle, lipped sealing (MOD 5000 ALT/SB/9/036)	1	-	C	-						R
	STRUCTURE, Pilot's Ladder, Forward and Aft Attachment, Frame 7 and 9, Port Assembly (EB8.10.3793)	-	-	-	FB1/28						R
	Spares for:										
EB8.10.3685	CAP, spring retaining	2	L65	C	FB9/1						
EB8.10.3683	HOUSING, spring	1	-	C	FB9/2						
	Attachment of housing to structure										R
AS156/406	Rivet, 1/8 in. dia.	6	-	C	-						R
EB8.10.3689	PAD, bearing, forward	1	DTD166B	C	FB9/3						
EB8.10.3787	PAD, bearing, aft	1	DTD166B	C	FB9/4						
	Attachment of bearing pad to housing and structure										
SP78/405	Rivet, 1/8 in. dia.	8	-	C	-						R

FUSELAGE
FORWARD

Part No.	Description	No. off	Material Specification	Class of Eqpt M.R. or L.M.	Plate						
						1	2	3	4	5	6
EB8.10.3687	PLUG-END, 1 in. BSP	2	L65	C	FB9/5						
	Attachment of plug-end to housing										R
AGS568/H	Washer, jointing	1	-	C	FB9/6						R
EB8.10.3691	SPRING	2	DTD215	C	FB9/7						
EB8.10.6611	WINDOW, camera, port and starboard frame 4, group	2	Glass PH334	L	FB1/29						
OR											
EB8.10.6611x2	WINDOW, camera port and starboard frame 4, group (SA 4904)	2	Glass PH334 Float glass Method	L	FB10/3						R
	Attachment of camera window to fuselage structure										
AS1242/4C	Bolt, csk. 2BA	12	-	C	FB10/4						R
AGS2001/C1	Nut, stiff, 2BA	12	-	C	FB10/5						
EB8.10.7993	Ring, retaining, inner	1	L72	C	FB10/6						
EB8.10.6581	Ring, sealing	1	Natural Rubber	C	FB10/7						
EB8.10.7697	Ring, retaining, port	1	DTD797A	C	FB10/8						
EB8.10.7698	Ring, retaining, starboard	1	DTD797A	C	FB10/9						
SP15/C	Washer, 2BA	12	-	C	FB10/10						
EB8.00.559	WINDOW, navigator's, port, group	1	-	L	FB1/30						
EB8.00.560	WINDOW, navigator's, starboard group	1	-	L	FB1/31						R
	Attachment of navigator's window to structure										
AS1242/13C	Bolt, csk. 2BA	19	-	C	FB9/8						
EA3.10.983	Bush, 3/8 in. o/d	19	Natural Rubber	C	FB9/10						
AGS2001/C1	Nut, stiff, 2BA	19	-	C	FB9/11						
EB8.10.4953	Seal, outer	1	Natural Rubber	C	FB9/12						
EB8.10.4955	Seal, inner	1	Natural Rubber	C	FB9/27						
EB8.10.4957	Strip, retaining, port window	1	L73	C	FB9/14						
EB8.10.4958	Strip, retaining, starboard window	1	L73	C	FB9/15						

FUSELAGE
FORWARD

Part No.	Description	No. off	Material Specification	Class of Eqpt M.R. or L.M.	Plate							
						1	2	3	4	5	6	
	FRAME, 12A, Joint, Assembly (EB8.10.53)	-	-	-	FB1/33							R
	Spares for:											
Fairey FS515	BEARING, roller, flying control tube guide group	3	-	L	FB10/22							R
	Attachment of bearing to frame 12A											R
AS2227/405	Rivet, 1/8 in. dia.	5	-	C	FB10/23							R
EB8.10.3939	BLOCK, mounting, nose u/c sequence valve	2	L65	C	FB10/24							R
EB8.73.2267	BRACKET, mounting, nosewheel group selector	1	DTD610	C	FB10/25							R
AS2230/507	Rivet, csk, 5/32 in. dia.	6	-	C	FB10/26							R
EA3.10.3161	BRACKET, Lock Lever, Nosewheel Door, Port, Group (Pre Mod 5000 ALT/SB/9/059)	1	-	L	FB3/30							R
EK5.10.803	BRACKET, Lock Lever, Nosewheel Door Port Group (Mod 5000 ALT/SB/9/059)	1	-	L	FB3/31							R
	Spares for:											
EA3.10.3149	BRACKET, (Pre Mod 5000 ALT/SB/9/059)	1	-	C	FB3/32							R
EK5.10.807	BRACKET, (Mod 5000 ALT/SB/9/059)	1	-	C	FB3/33							R
EA3.10.3159	LEVER, group	1	-	C	-							R
	Attachment of lever to bracket											R
EA3.10.3219	Bolt, 5/16 in. BSF	1	S96	C	FB3/34							R
A27/GS	Nut, slotted, 5/16 in. BSF	1	-	C	FB3/35							R
SP90/C8	Pin, split, 1/16 in. dia.	1	-	C	FB3/36							R
EA1.10.1407	Washer, packing	1	L40	-	FB3/37							R
SP15/G	Washer, 5/16 in.	1	-	C	FB3/38							R
	Attachment of bracket to Frame 12											R
A25/2C	Bolt, 2BA (Mod 5000 ALT/SB/9/059)	4	-	C	-							R
EB8.10.7543x2	BRACKET, Lock Lever, Nosewheel Door, Starboard, Group (Pre Mod 5000 ALT SB/9/059)	1	-	L	FB3/39							R
EB8.10.7543x3	BRACKET, Lock, Lever Nosewheel Door Starboard, Group Mod 5000 ALT SB/9/059)	1	-	L	FB3/40							R
	Spares for:											
EA3.10.3150	BRACKET (Pre Mod 5000 ALT/SB/9/059)	1	-	C	-							R

FUSELAGE
FORWARD

Part No.	Description	No. off	Material Specification	Class of Eqpt M.R. or L.M.	Plate
EA9.15.499	Seal, rubber (Make from EA9.15.219)	2	-	LM	FB12/8A
EA9.15.179	Strip, retaining, starboard	1	DTD546	MR	FB12/9
EA9.15.180	Strip, retaining, port	1	DTD546	MR	FB12/10
EA9.15.181	Strip, retaining, top	1	DTD546	MR	FB12/11
EA9.15.183	Strip, retaining, bottom	1	DTD546	MR	FB12/12
EA9.15.233	Strip, packing, port	1	DTD546	MR	FB12/13
EA9.15.234	Strip, packing, starboard	1	DTD546	MR	FB12/14
AGS1186/3	Washer, sealing, 2BA	42	-	C	FB12/15
EA9.15.389	Washer, 2BA	32	-	LM	FB12/16
EB8.15.115	PANEL, quarter, port	1	Perspex	L	FB11/9
	Attachment of quarter panel to windscreen casting				
AS1242/16C	Bolt, csk. 2BA	19	-	C	FB11/10
AS1242/17C	Bolt, csk. 2BA	30	-	C	FB11/11
EA9.15.231	Bush, panel fixing bolt	49	Natural Rubber	C	FB11/12
AGS2001/C1	Nut, stiff, 2BA	49	-	C	FB11/13
EA9.15.119	Plate, retaining, outer	1	L73	MR	FB11/14
EA9.15.279	Plate, retaining, inner	1	L73	MR	FB11/15
EA9.15.213	Seal, inner	1	Synthetic Rubber	C	FB11/16
EA9.15.307	Seal, outer	1	Synthetic Rubber	C	FB11/17
EA9.15.131	Strip, casting reinforcing, outer	1	DTD171B	MR	FB11/18
EA9.15.133	Strip, casting reinforcing, inner	1	DTD171B	MR	FB11/19
EB8.15.117	PANEL, quarter, starboard	1	Perspex	L	FB11/20
	Attachment of quarter panel to windscreen casting				
AS1242/16C	Bolt, csk. 2BA	7	-	C	FB11/21
AS1242/17C	Bolt, csk. 2BA	23	-	C	FB11/22
AS1242/18C	Bolt, csk. 2BA	3	-	C	FB11/23
EA9.15.231	Bush, panel fixing bolt	33	Natural Rubber	C	FB11/24
AGS2001/C1	Nut, stiff, 2BA	33	-	C	FB11/25
EA9.15.121	Plate, retaining, outer	1	L73	C	FB11/26
EA9.15.295	Plate, retaining, inner	1	L73	C	FB11/27
EA9.15.215	Seal, inner	1	Synthetic Rubber	C	FB11/28
EA9.15.309	Seal, outer	1	Synthetic Rubber	C	FB11/29
EA9.15.135	Strip, casting reinforcing, outer	1	DTD171B	C	FB11/30
EA9.15.271	Strip, casting reinforcing, inner	1	DTD171B	C	FB11/31
EA9.15.253	PANEL, Forward, Windscreen, Group (Supplied to Part No. EA9.00.327 for spares purposes)	1	-	P	FB11/32
	Spares for:				
EA9.15.19	PANEL, windscreen, outer	1	Glass	-	FB11/33
	Attachment of panel to frame				
AS1242/2C	Bolt, csk. 2BA	43	-	C	FB11/34
AS4562/3C	Bolt, csk. 2BA	13	-	C	FB11/35

FUSELAGE
FORWARD

Part No.	Description	No. off	Material Specification	Class of Eqpt M.R. or L.M.	Plate
AGS2002/C1	Nut, stiff, 2BA	43	-	C	FB11/36
AGS2002/C3	Nut, stiff, 2BA	13	-	C	FB11/37
EA9.15.217	Seal, outer	1	Synthetic Rubber	C	FB11/38
EA9.15.173	Strip, retaining, port	1	DTD683	C	FB11/39
EA9.15.175	Strip, retaining, aft	1	DTD683	C	FB11/40
EA9.15.177	Strip, retaining, forward	1	DTD683	C	FB11/41
EA9.15.251	Strip, retaining, starboard	1	DTD683	C	FB11/42
EA9.15.255	Strip, corner and jointing reinforcing, port upper	1	DTD546		FB12/17
EA9.15.256	Strip, corner and jointing reinforcing, starboard upper	1	DTD546		FB12/18
EA9.15.257	Strip, corner and jointing reinforcing, port lower	1	DTD546		FB12/19
EA9.15.258	Strip, corner and jointing reinforcing, starboard lower	1	DTD546		FB12/20
	Attachment of forward panel to windscreen casting				
AS1248/1C	Bolt, 2BA	3	-	C	FB11/43
AS1248/17C	Bolt, 2BA	12	-	C	FB11/44
AGS2001/C1	Nut, stiff, 2BA	12	-	C	FB11/45
EA9.15.477	Seal, weather	1	Natural Rubber	C	FB11/46
AGS1186/3	Washer, sealing, 2BA	12	-	C	FB11/47
SP13/C	Washer, 2BA	12	-	C	FB11/48
EA9.15.377	SHROUD, windscreen de-icing air outlet	1	L72	C	FB11/49
	Attachment of shroud to port nose fairing				
AS1242/1B	Screw, csk. 4BA	5	-	C	FB11/50
	HYDRAULIC, System (EB8.73.305) (See Section MF)	-	-	-	-
EB8.00.513x2	NOSE, Hinged, Group (Supplied to Pt. No. EB8.00.627 for spares purposes) (Pre Mod 5309)	1	-	P	FB1/39
EB8.00.513x4	NOSE, Hinged, Group (Supplied to Pt. No. EB8.00.803 for spares purposes) (Mod 5309)	1	-	P	FB1/39
	Spares for:				
	ELECTRICAL, Installation (EB8.81.4961) (See Section DA)	-	-	-	-
	EQUIPMENT, Assembly (EB8.80.2315) (See Section EA)	-	-	-	-
	PITOT AND STATIC, Installation (EB8.80.2523) (See Section ML)	-	-	-	-

FUSELAGE
FORWARD

Part No.	Description	No. off	Material Specification	Class of Eqpt M.R. or L.M.	Plate
EB8.10.7773	PIN, guide spring	1	S96	C	FB12/29
	Attachment of guide pin to structure				
AGS2001/C1	Nut, stiff, 2BA	1	-	C	FB12/30
SP13/C	Washer, 2BA	1	-	C	FB12/31
EB8.10.7775	SPRING	1	DTD215	C	FB12/32
Ltd					
Z157/A/54	HEAD, photographic sight	1	-		FB1/45
	Attachment of sight head to bottom skin between frames C & D				
AS1248/4C	Bolt, 2BA	24	-	C	FB1/46
AGS2021/C1	Nut, stiff, translucent cap, 2BA	24	-	C	FB1/47
EB8.10.6907	Seal, rubber	1	Natural Rubber	C	FB1/48
SP15/C	Washer	24	-	C	FB1/49
	HINGE, Upper and Lower, Assembly (EB8.10.3995)	-	-	-	-
	Spares for:				
EB8.10.7085	BEARING, spherical, upper and lower hinge arm	2	L65	C	FB1/50
EB8.10.7081	BUSH, flanged, upper hinge arm	2	S1	C	FB1/51
EB8.10.7083	SPACER, bearing, lower hinge arm	1	S1	C	FB1/52
EB8.10.6991	HOUSING, pitot head	1	Fibre Glass	C	FB1/53
	Attachment of pitot head housing to frame A				
AS1248/4C	Bolt, 2BA	10	-	C	FB1/54
A27/CP	Nut, 2BA	10	-	C	FB1/55
EB8.10.7007	Seal, rubber	1	Natural Rubber	C	FB1/56
SP16/C	Washer, 2BA	10	-	C	FB1/57
	ROLLER, Ramp, Nose Closing, Frame D (Pre Mod 5000 ALT/SB/9/014) (EB8.10.7917)	-	-	-	-
	Spares for:				
EB8.10.7911	ROLLER (Pre Mod 5000 ALT/SB/9/014)	1	-	-	FB1/58
	Attachment of roller to frame 1				
EB8.10.7913	Bolt, special (Pre Mod 5000 ALT/SB/9/014)	1	-	C	FB1/59
AGS2001/E1	Nut, stiff, 1/4 in. BSF (Pre Mod 5000 ALT/SB/9/014)	1	-	C	FB1/60
SP45/E	Washer, 1/4 in. BSF (Pre Mod 5000 ALT/SB/9/014)	1	-	C	FB1/61
EB8.10.6109	SPIGOT, upper	1	S95	C	FB1/62

FUSELAGE
FORWARD

Part No.	Description	No. off	Material Specification	Class of Eqpt M.R. or L.M.	Plate
EB8.10.6111	SPIGOT, lower Attachment of spigot to frame D	1	S95	C	FB1/63
A25/5E	Bolt, 1/4 in. BSF	4	-	C	FB1/64
A25/6E	Bolt, 1/4 in. BSF	2	-	C	FB1/65
A27/EP	Nut, 1/4 in. BSF	6	-	C	FB1/66
SP15/E	Washer	6	-	C	FB1/67
EB8.10.6611	WINDOW, camera, frame A, group	1	Glass PH334	L	FB1/68
OR EB8.10.6611x2	WINDOW, camera, frame A, Group (SA4904) Attachment of window to frame A	1	Glass PH334 Float Glass Method	L	FB1/69
AS1242/10C	Bolt, csk. 2BA	12	-	C	FB12/33
EB8.10.6997	Plate, ring c/w anchor nuts	1	-	C	FB12/34
EB8.10.6993	Ring, fibre	1	LFS21	C	FB12/35
EB8.10.7959	Ring, fibre packing	1	LFS21	C	FB12/36
EB8.10.7001	Seal, inner	1	Natural Rubber	C	FB12/37
EB8.10.7003	Seal, outer	1	Natural Rubber	C	FB12/38
	Attachment of hinged nose group to frame 1, forward fuselage (See Section HA)				
	NOSEWHEEL, Assembly (EB8.40.101) (See Section QB)	-	-	-	-
	OXYGEN, System (EB8.71.465) (See Section MK)	-	-	-	-
	PITOT & STATIC, Installation (EB8.80.2401) (See Section ML)	-	-	-	-
	PRESSURISING, Cabin, System (EB8.75.2615) (See Section MM)	-	-	-	-
	RADAR & RADIO, Installation (See Section KA)	-	-	-	-
	STRUT, Folding, Hinged Hose, Assembly (EB8.10.6113) Consisting of:	-	-	-	FB1/70
Aviation Dev. A411	PIN, "pip", quick release	1	-	C	FB12/39
EB8.10.6983	STRUT, aft, group	1	-	C	FB12/40
EB8.10.6985	STRUT, forward, group	1	-	C	FB12/41
	Attachment of aft strut to forward strut				
EB8.10.6933	Bolt, 3/8 in. BSF	1	S96	C	FB12/42

FUSELAGE
FORWARD

Part No.	Description	No. off	Material Specification	Class of Eqpt M.R. or L.M.	Plate						
						1	2	3	4	5	6
A27/JS SP90/C8 SP15/J	Nut, slotted, 3/8 in. BSF Pin, split, 1/16 in. dia. Washer 3/8 in.	1 1 1	- - -	C C C	FB12/43 FB12/44 FB12/45						
	Attachment of folding strut to bracket on frame 1										
EB8.10.6935 A27/ES SP90/C8 SP15/E	Bolt, 3/8 in. BSF Nut, slotted, 1/4 in. BSF Pin, split, 1/16 in. dia. Washer, 1/4 in.	1 1 1 1	S96 - - -	C C C C	FB12/46 FB12/47 FB12/48 FB12/49						
	VENTILATED SUITS, Pilot's and Navigator's System (EB8.75.1715) (See Section MR)	-	-	-	-						R
	HATCH, Navigators, Detonating System (EB8.49.441) (Mod 4397)	-	-	-	-						R
	Consisting of:										
	MECHANISM MDC Initiating (EB8.49.345)	-	-	-	-						R
	Spares for:										
EB8.49.393	DETONATOR, Mechanism, Trip Assembly	1	-	-	-						R
	Spares for:										
EB8.49.359	ADJUSTER	1	-	-	C						R
	Attachment of adjuster to lever										
AS8600/E EB8.49.367	Nut, locking BRACKET, serrated	1 1	- -	- -	C C						
	Attachment of bracket to seat rail	1	-	-	C						
A102/4D AS8600D SP122/D EB8.49.355	Bolt, 10-32 UNF Nut, stiff, 10-32 UNF Washer LEVER	4 4 4 1	- - - -	- - - -	C C C C						R
	Attachment of lever to spigot plate										R
SP113/G8-1/2 SP90/E8 SP124/G EB8.49.365	Pin, close tolerance Pin, split Washer PLATE, spigot	1 1 1 1	- - - -	- - - -	C C C C						
	Attachment of plate to bracket										
A102/4D A103/DS SP90/C8 SP124/D SP125/D EB8.49.399	Bolt, 10-32 UNF Nut, slotted Pin, split Washer Washer ROD, Assembly, Push	2 2 2 2 2 1	- - - - - -	- - - - - -	C C C C C C						

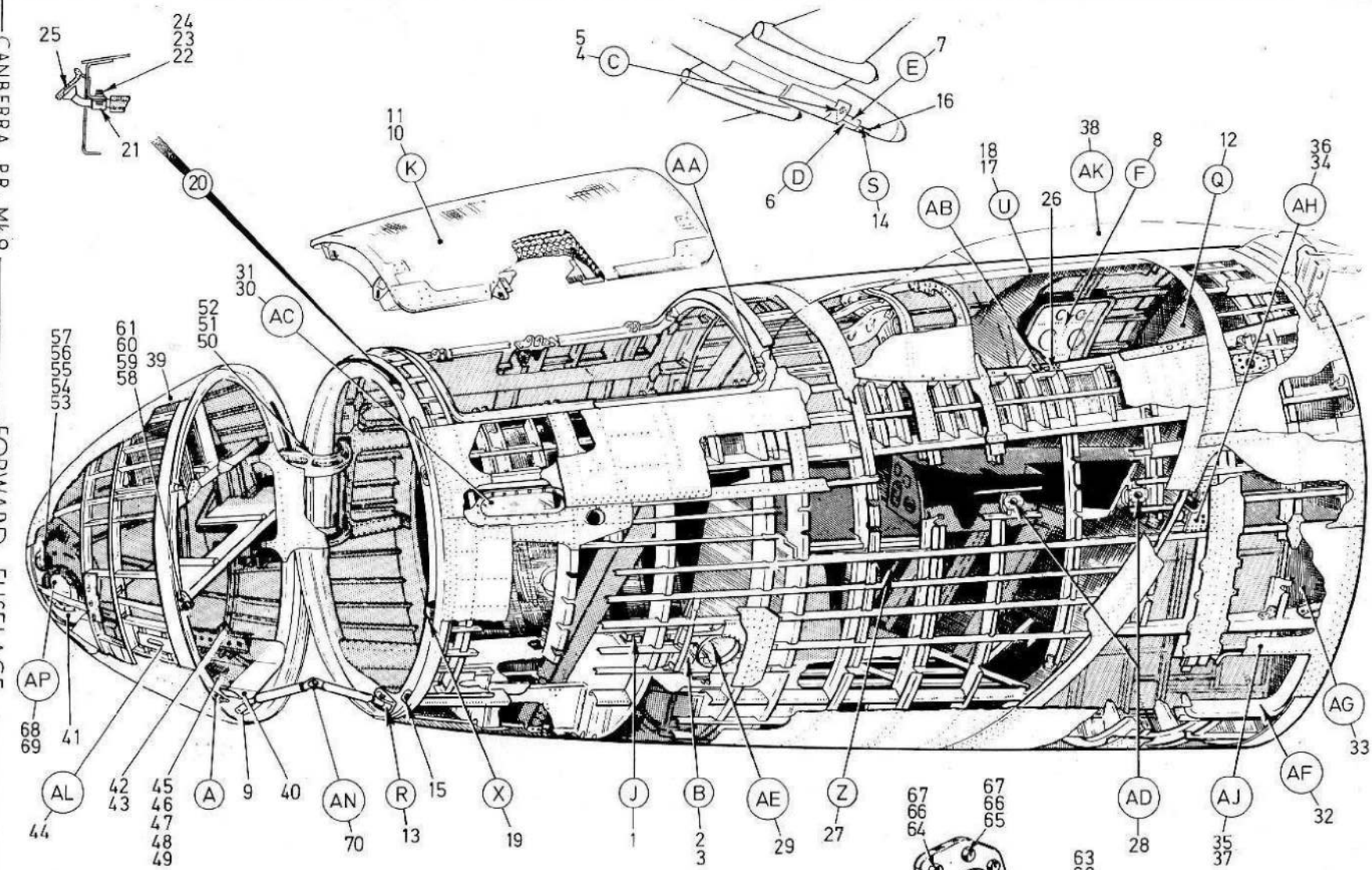
FUSELAGE
FORWARD

Part No.	Description	No. off	Material Specification	Class of Eqpt M.R. or L.M.	Plate
	Spares for:				
EB8.49.387	ROD, adjustable	1	-	C	
	Spares for:				
SP120/ZC	FORK, joint	1	-	C	
	Attachment of fork to rod				
A103/CT	Nut, lock, 2BA	1	-	C	
	Attachment of push rod to levers				
SP113/B3	Pin, shear	1	-	C	
SP113/B4-1/2	Pin, shear	1	-	C	
SP90/C4	Pin, split	2	-	C	
SP122/C	Washer	2	-	C	
EB8.49.391	STRIKER, Assembly Sear	1	-	C	
	Spares for:				
EB8.49.375	BRACKET, pivot	1	-	C	
	Attachment of bracket to seat rail				
A102/2D	Bolt	3	-	C	
AS8600D	Nut, stiff	3	-	C	
SP122/D	Washer	3	-	C	
EB8.49.371	LEVER, sear striker	1	-	C	
	Attachment of lever to bracket				
SP113/G9-1/2	Pin, shear	1	-	C	
SP90/E8	Pin, split	1	-	C	
SP124/G	Washer	1	-	C	
EB8.49.373	SPRING	1	-	C	
	RIGGING OF MECHANISM (EB8.49.439)	-	-	-	
	Spares for:				
EB8.49.443	BLOCK, Setting Assembly	1	-	C	
	Spares for:				
EB8.49.443/B	Block locating	2	-	C	
EB8.49.443/C	PAD, compression (Make from 32C/9429601)	1	-	C	
EB8.49.443/D	PLATE, contact	1	-	C	
	Attachment of blocks and pad to plate				
2A59/8C	Bolt, 2BA	2	-	C	
A27/CP	Nut, 2BA	2	-	C	
SP13/C	Washer	2	-	C	
	PIN, Stowage Assembly (EB8.80.4299) (Mod 4397)				

FUSELAGE
FORWARD

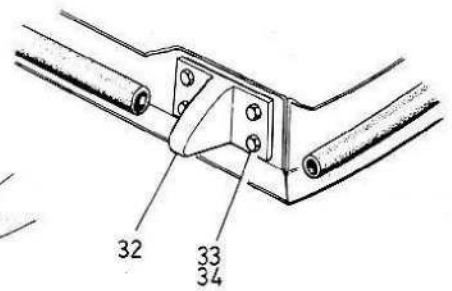
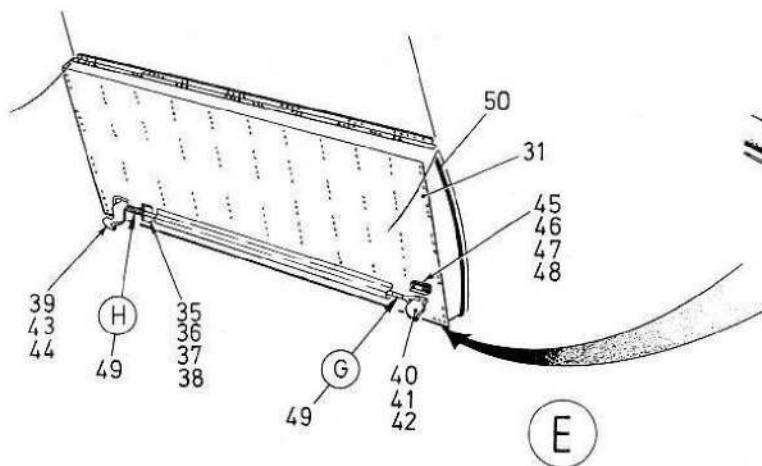
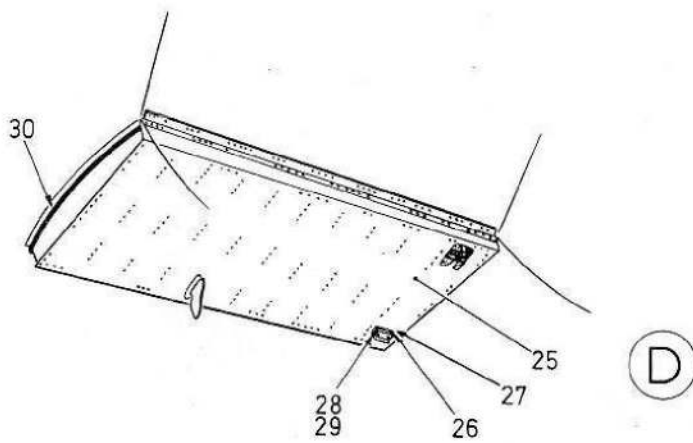
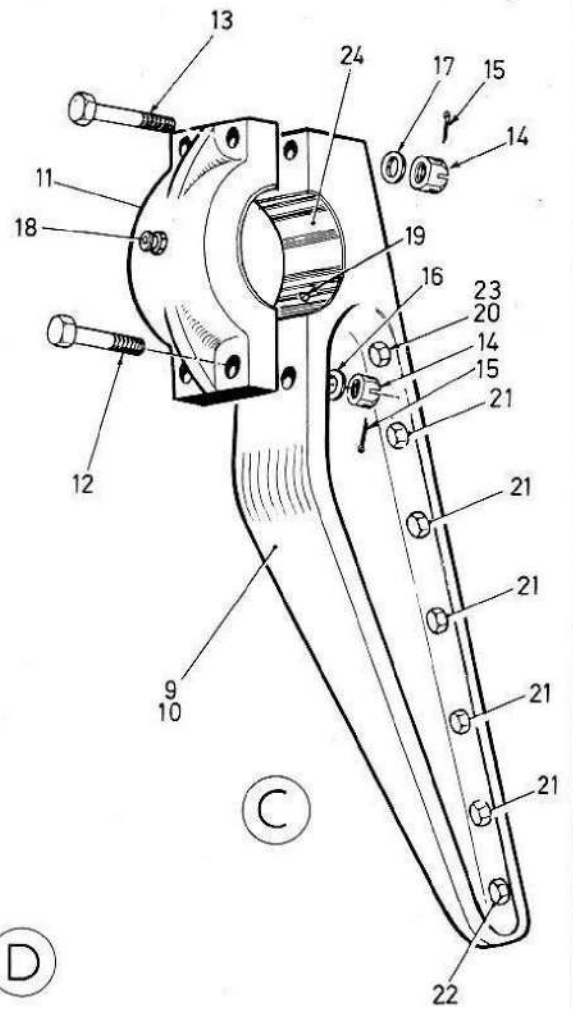
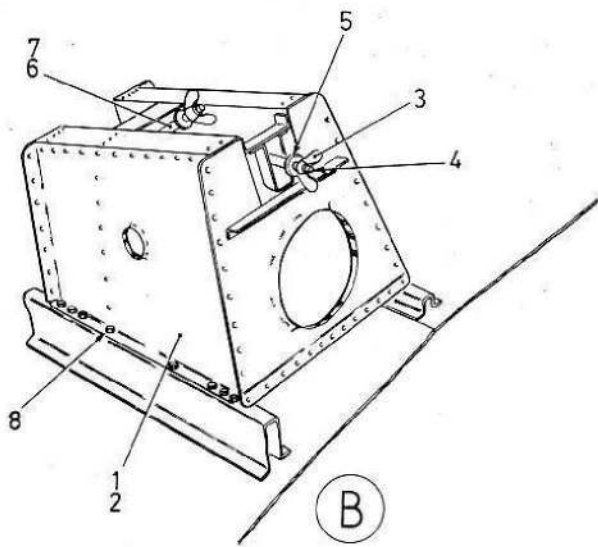
Part No.	Description 1 2 3 4 5 6	No. off	Material Specification	Class of Eqpt M.R. or L.M.	Plate
	Spares for:				
EB8.80.4297	PIN, stowage	1	-	C	
EB8.80.4301	LABEL	1	-	C	
	Attachment of stowage block and label				
AS1246/6B	Bolt	2	-	C	
EB8.49.451	LABEL	1	-	C	

CANBERRA P.R. Mk.9
FORWARD FUSELAGE

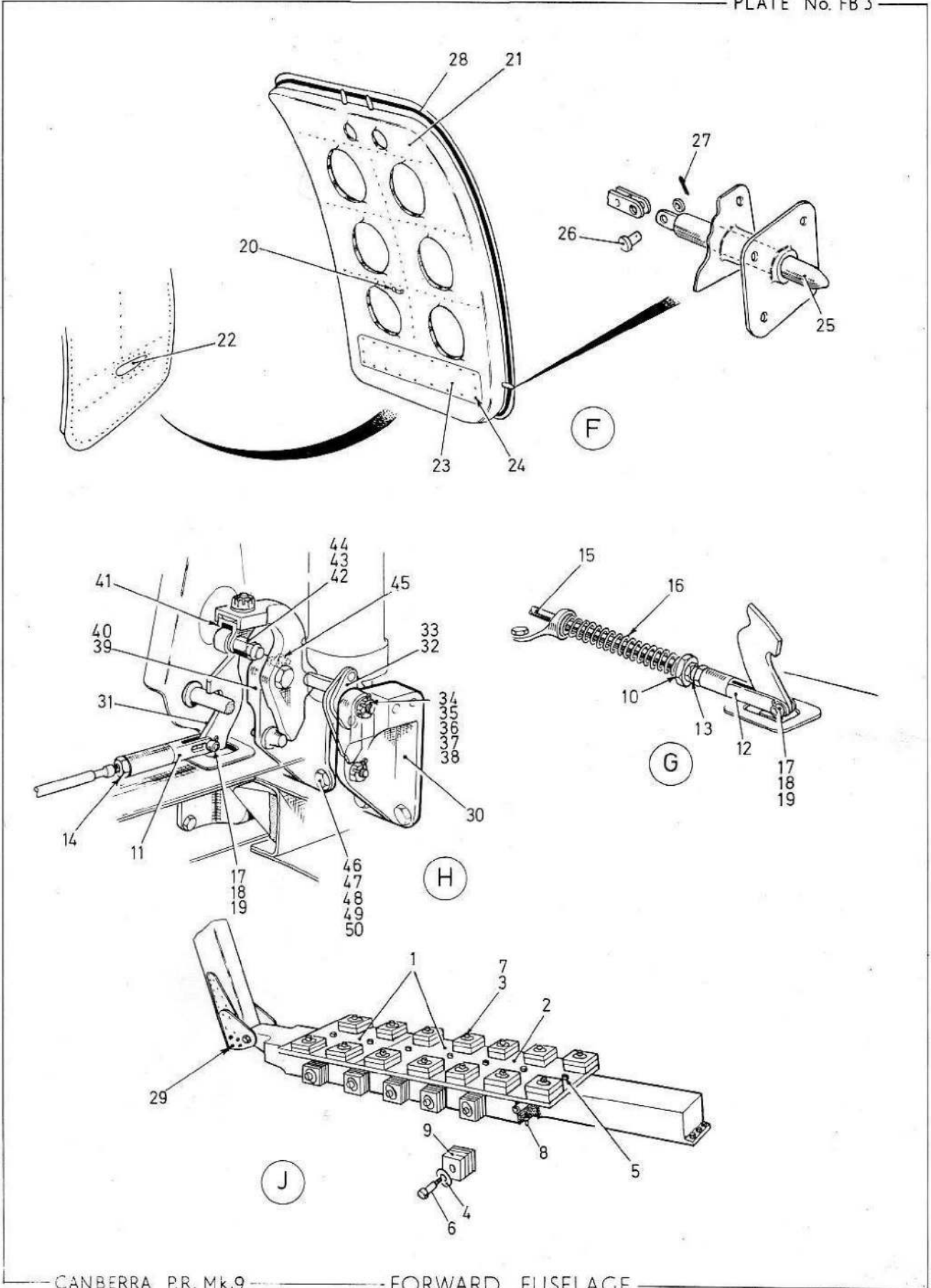


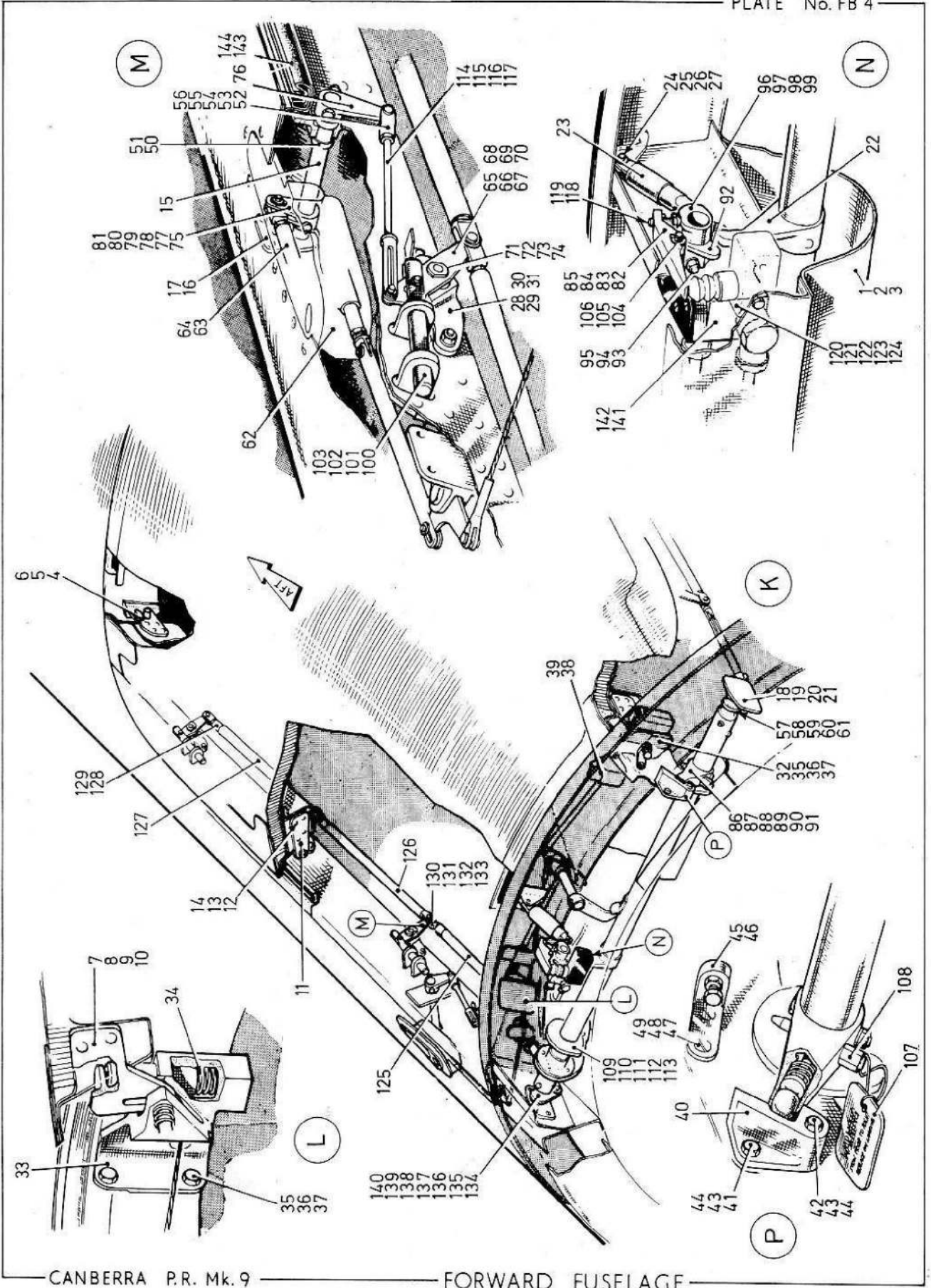
AA AB SEE PLATE FB8





(G) (H) SEE PLATE FB 3





CANBERRA P.R. Mk. 9

FORWARD FUSELAGE

This file was downloaded
from the RTFM Library.

Link: www.scottbouch.com/rtfm

Please see site for usage terms,
and more aircraft documents.



LIGHTNING MK. 1
COVER PITOT HEAD
EB2-88-5111