

MISCELLANEOUS
ATTACHMENT DETAILS

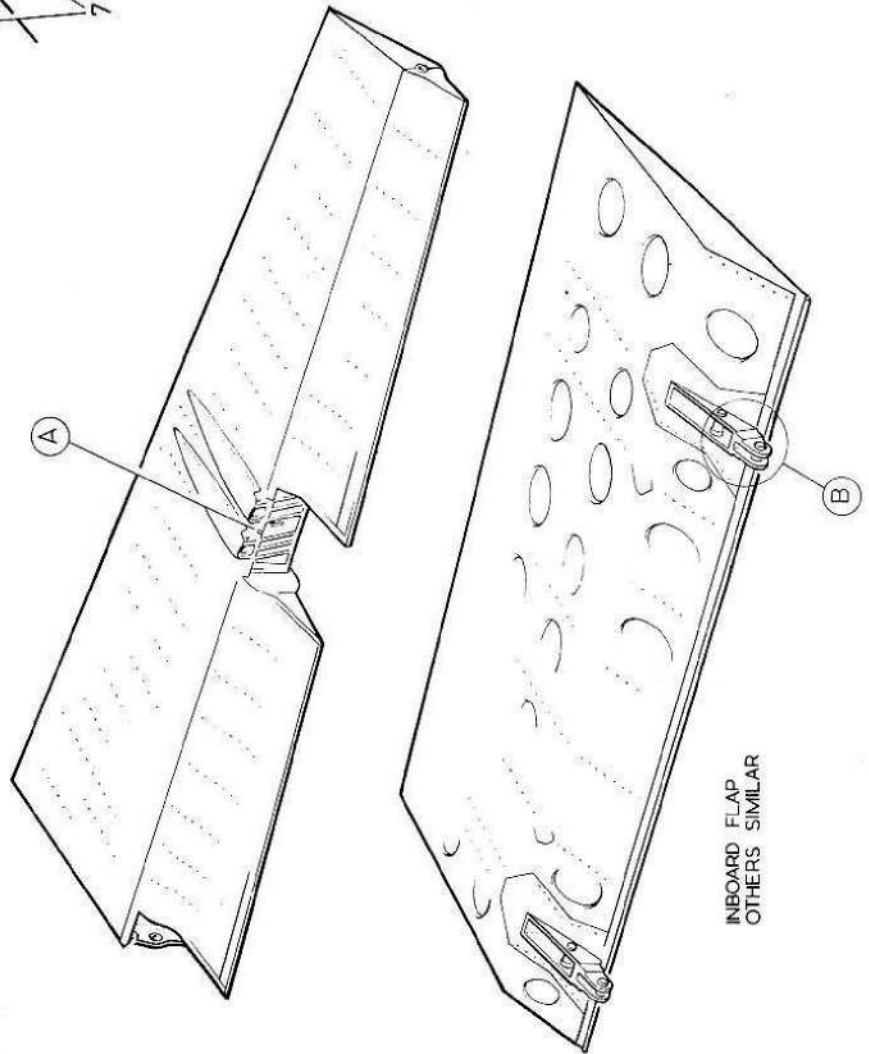
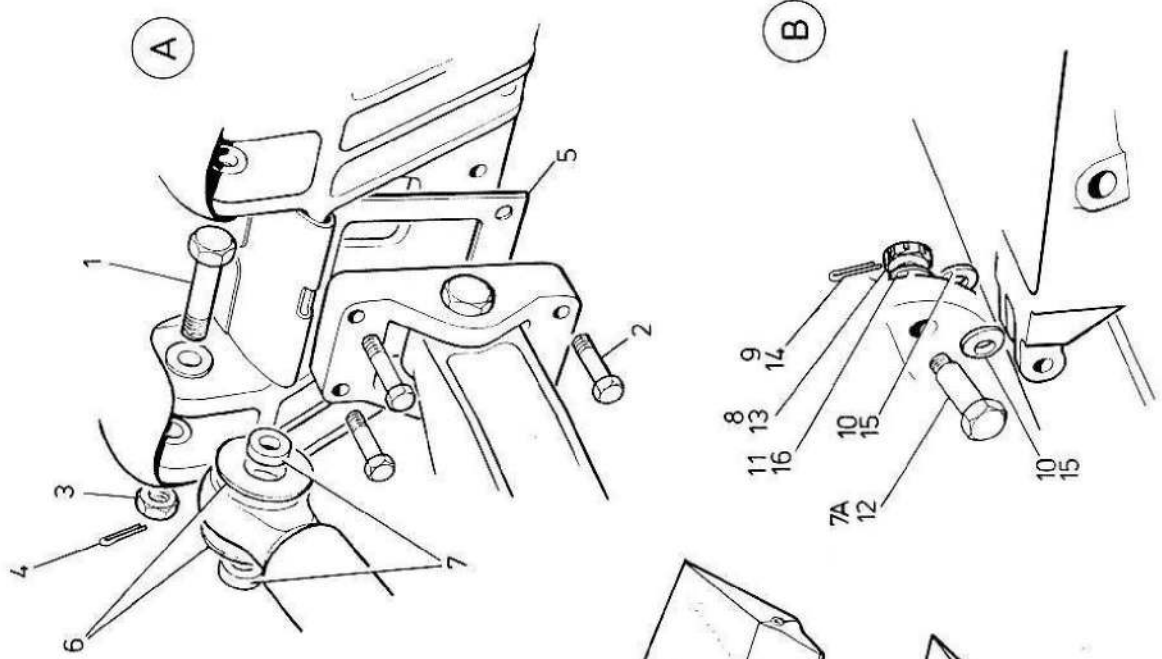
Part No.	Description	No. off	Material Specification	Class of Eqpt M.R. or L.M.	Plate	
EA3.31.43	LINK, connecting elevator operating levers	1	DTD683	C	HA7/12	R
A27/JT	LOCKNUT, 3/8 in BSF	3	-	C	HA7/13	R
A27/JTL	LOCKNUT, 3/8 in. BSF LH	1	-	C	HA7/14	R
SP21	NIPPLE, lubricating	2	-	C	HA7/15	R
EA1.12.453	NUT, tailplane, actuator anchor	1	-	C	HA7/16	R
EA1.30.341	NUT, tailplane attachment forward hinge point (Pre SAS 4741)	2	L40	C	-	R
A24/PP	NUT, 9/16 in BSF (SAS 5741)	2	-	C	HA7/18	R
A27/JS	NUT, slotted, 3/8 in. BSF	2	-	C	HA7/19	R
A58/ES	NUT, slotted, 1/4 in. BSF	1	-	C	HA7/21	R
SP90/C8	PIN, split, 1/16 in. dia.	3	-	C	HA7/22	R
SP90/E8	PIN, split, 1/32 in. dia.	1	-	C	HA7/22A	R
SP90/E10	PIN, split, 1/32 in. dia.	4	-	C	HA7/23	R
EA1.12.597	PLATE, sealing, tailplane to fuselage, forward, port	1	-	C	HA7/24	R
EA1.12.598	PLATE, sealing, tailplane to fuselage, forward, starboard	1	-	C	HA7/25	R
EA1.12.599	PLATE, sealing, tailplane to fuselage, aft port	1	-	C	HA7/26	R
EA1.12.600	PLATE, sealing, tailplane to fuselage, aft, starboard	1	-	C	HA7/27	R
EA1.31.49	PLATE, locking, for serrated bush	1	S95	C	HA7/28	R
EA1.31.279	ROD END, bearing, elevator tab connecting rod (Pre Mod 5000 ALT SB/9/012)	1	-	C	-	R
EK5.31.607	ROD END, bearing, elevator tab connecting rod (Mod 5000 ALT SB/9/012)	1	-	C	HA7/29	R
EB8.31.31	SCREW, connecting, between connecting rod and rod end	1	S95	C	HA7/30	R
A33/C16	SCREW, 2BA, sealing plate attachment	15	-	C	HA7/31	R
A33/C20	SCREW, 2BA, sealing plate attachment	20	-	C	HA7/32	R
A33/C24	SCREW, 2BA, sealing plate attachment	36	-	C	HA7/33	R
EA1.12.455	WASHER, tailplane actuator anchor	2	DTD610	C	HA7/34	R
EA1.31.165	WASHER, connecting link attachment	2	L1	C	HA7/35	R
EA1.31.361	WASHER, elevator hinge	2	DTD610	C	HA7/36	R
SP15/E	WASHER, connecting rod attachment	1	-	C	HA7/37	R
	UNDERCARRIAGE TO WING, Port and Starboard Attachment details Assembly (EB8.00.35/6)	-	-	-	-	R
	Consisting of:					
EA3.40.179	ADAPTOR, lubricating nipples for side stay pivot bolt	1	S95	C	HA8/1	R
EA1.20.1107	BOLT, main undercarriage, pivot	1	S95	C	HA8/2	R
EA1.40.243	BOLT, hinge side stay link	1	S65	C	HA8/3	R
EA3.40.177	BOLT, side stay pivot	1	S65	C	HA8/4	R
EB8.50.1359	BOLT, attachment, link to cowl door	1	S65	C	HA8/5	R
AS1242/3C	BOLT, 2BA, stop block attachment	2	-	C	HA8/6	R
EB8.50.1351	LINK, cowl door, group	1	-	C	HA8/7	R
SP21	NIPPLE, lubricating	1	-	C	HA8/8	R
EA1.20.1287	NUT, main undercarriage pivot bolt	1	S11	C	HA8/9	R
EA1.40.287	NUT, side link bolt	2	S11	C	HA8/10	R
AGS2002/C1	NUT, stiff 2BA	1	-	C	HA8/11	R
EA3.20.1813	PIN, split, main undercarriage pivot bolt	1	DTD268	C	-	R
OR						
SP90/L24 #	PIN, split, 1/4 in dia, main undercarriage pivot bolt #Preferred alternative to Part No. EA3.20.1813	1	-	C	HA8/12	R
AGS784/22	PIN, split, 1/8 in. dia.	1	-	C	HA8/13	R

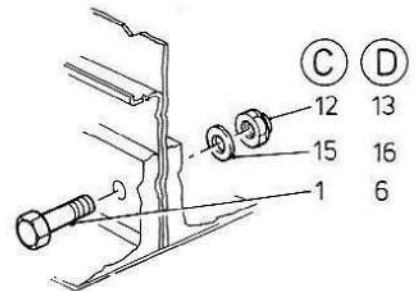
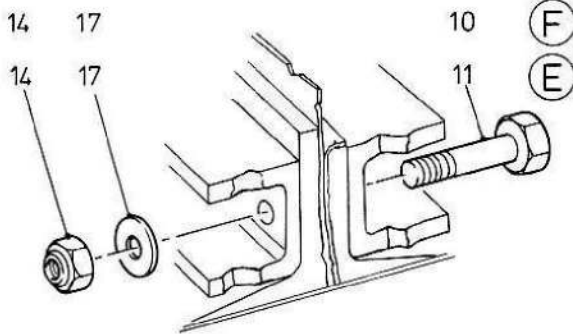
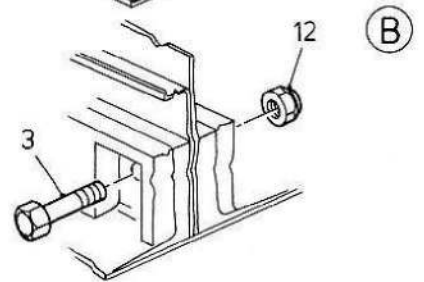
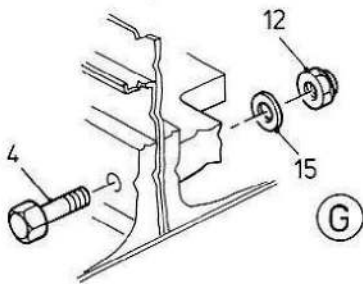
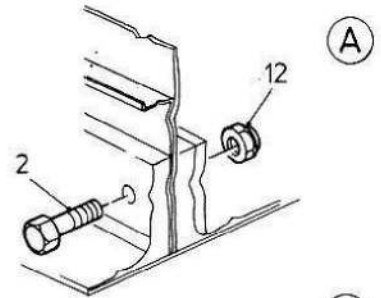
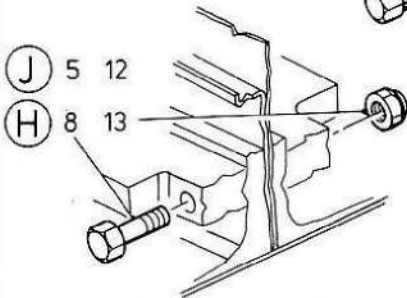
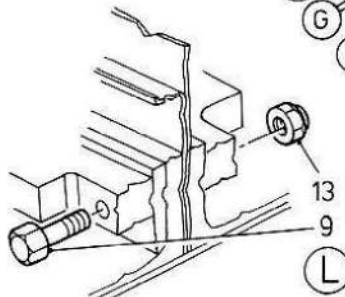
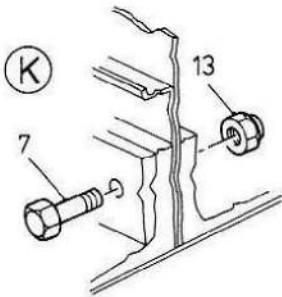
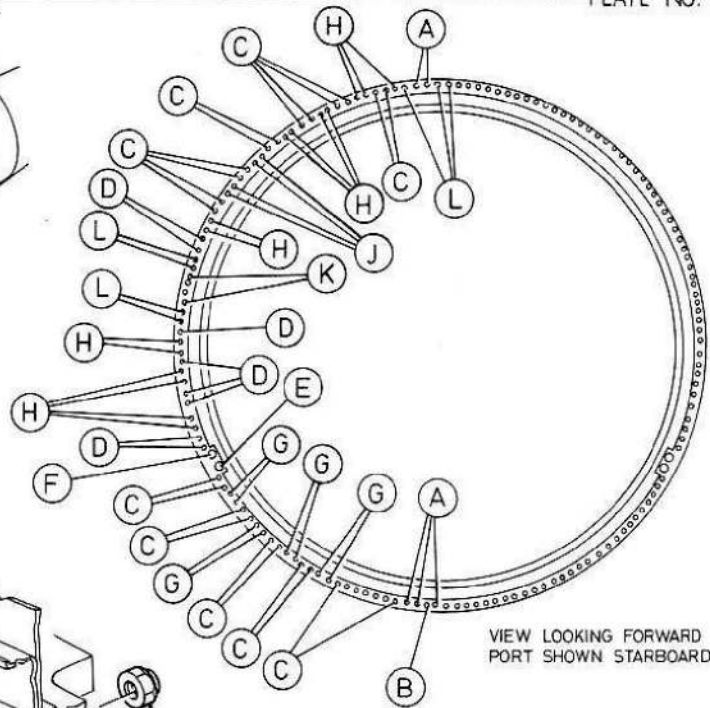
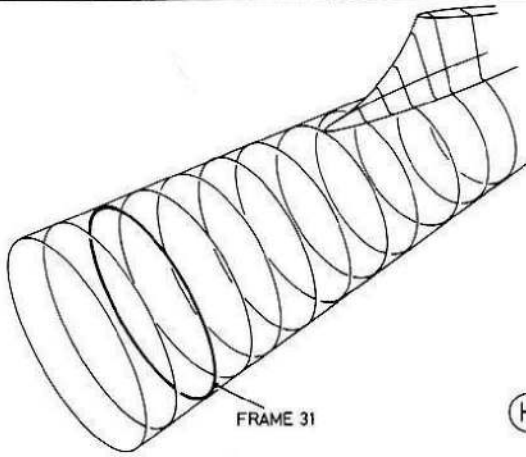
MISCELLANEOUS
ATTACHMENT DETAILS

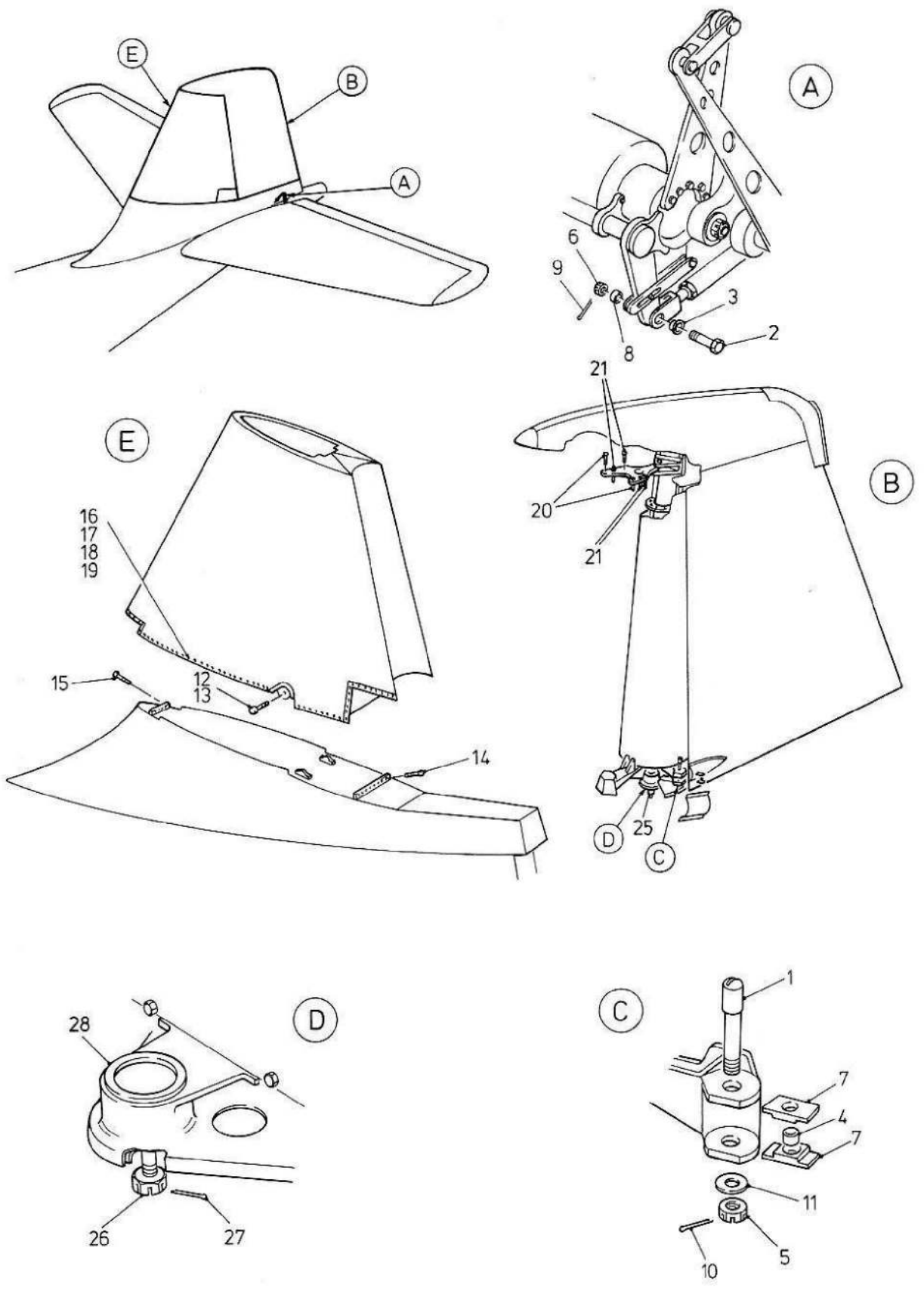
Part No.	Description	No. off	Material Specification	Class of Eqpt M.R. or L.M.	Plate	
SP90/G16	PIN, split, 1/16 in. dia.	1	-	C	HA8/14	R
EA3.20.933	PLATE, locking, main undercarriage pivot bolt (Pre Mod 3593)	1	-	C	-	R
EA9.20.1137	PLATE, locking, main undercarriage pivot bolt (Mod 3593)	1	-	C	HA8/15	R
EA3.20.1129	STOP, BLOCK, side stay, pivot bolt, port	1	DTD683	C	HA8/16	R
EA3.20.1130	STOP, BLOCK, side stay pivot bolt, starboard	1	DTD683	C	HA8/17	R
EA1.20.1285	WASHER, main undercarriage pivot bolt (Pre Mod 3593)	1	L45	C	-	R
EA9.20.1143	WASHER, main undercarriage pivot bolt (Mod 3593)	1	-	C	HA8/18	R
	WING, TO FUSELAGE, Port and Starboard Attachment details Assembly (EB8.00.5/6)	-	-	-	-	R
	Consisting of:					
EA3.20.135	BLOCK, sealing, wing to fuselage joint	1	Linatex	C	HA9/1	R
EA1.20.2897	BLOCK, sealing, wing to fuselage joint	1	Linatex	C	HA9/2	R
EA1.20.2899	BLOCK, sealing, wing to fuselage joint	1	Linatex	C	HA9/3	R
EB8.20.5987	BLOCK, guide	39	-	C	HA9/4	R
AS1242/2-1/2C	BOLT, guide block	39	-	C	HA9/5	R
EA1.20.1101	BOLT, main pick-up, wing to fuselage	2	DTD473	C	HA9/6	R
EA1.20.2277	BOLT, wing to fuselage attachment	2	DTD473	C	HA9/7	R
A25/10C	BOLT, 2BA	1	-	C	HA9/8	R
A25/10N	BOLT, 1/2 in. BSF	1	-	C	HA9/9	R
AGS571/906	BOLT, 9/16 in. BSF	7	-	C	HA9/10	R
EA1.11.129	COLLAR, rear spar to fuselage	1	DTD126A	C	HA9/11	R
EA9.20.1371	GUSSET, bottom, main spar closing panel port	1	S3	C	HA9/12	R
EA9.20.1372	GUSSET, bottom, main spar closing panel starboard	1	S3	C	HA9/13	R
EA9.20.1373	GUSSET, top, main spar closing panel, port	1	S3	C	HA9/14	R
EA9.20.1374	GUSSET, top, main spar closing panel, starboard	1	S3	C	HA9/15	R
AGS2007/C1	NUT, guide block bolt	39	-	C	HA9/16	R
A27/CP	NUT, 2BA	1	-	C	HA9/17	R
A27/NS	NUT, slotted, 1/2 in. BSF	1	-	C	HA9/18	R
A27/SS	NUT, slotted, 3/4 in. BSF	2	-	C	HA9/19	R
A27/WS	NUT, slotted, 1 in. BSF	2	-	C	HA9/20	R
AGS572/J	NUT, slotted, 9/16 in. BSF	7	-	C	HA9/21	R
AGS2001/C1	NUT, stiff, 2BA	42	-	C	HA9/22	R
EA1.20.2275	PAD, wing attachment bolt	2	S11	C	HA9/23	R
EA1.1.127	PIN, rear spar to fuselage	1	S11	C	HA9/24	R
SP90/E10	PIN, split, 3/32 in. dia.	8	-	C	HA9/25	R
SP90/H16	PIN, split, 5/32 in. dia.	2	-	C	HA9/26	R
SP90/K20	PIN, split, 3/16 in. dia.	2	-	C	HA9/27	R
EB8.20.5983	PLATE, sealing	1	-	C	HA9/28	R
EB8.20.5984	PLATE, sealing	1	-	C	HA9/29	R
EB8.20.5985	PLATE, sealing	1	-	C	HA9/30	R
EB8.20.5986	PLATE, sealing	1	-	C	HA9/31	R
EEAS1/1-1/2C	SCREW, 2BA	409	S11	C	HA9/32	R
EEAS1/2C	SCREW, csk, 2BA	38	S11	C	HA9/33	R
EEAS1/2-1/2C	SCREW, 2BA	47	S11	C	HA9/34	R
EEAS1/4C	SCREW, 2BA	12	S11	C	HA9/35	R
PK4100	SCREW, csk. Pk. No. 4 x 3/8 in. long	10	-	C	HA9/36	R

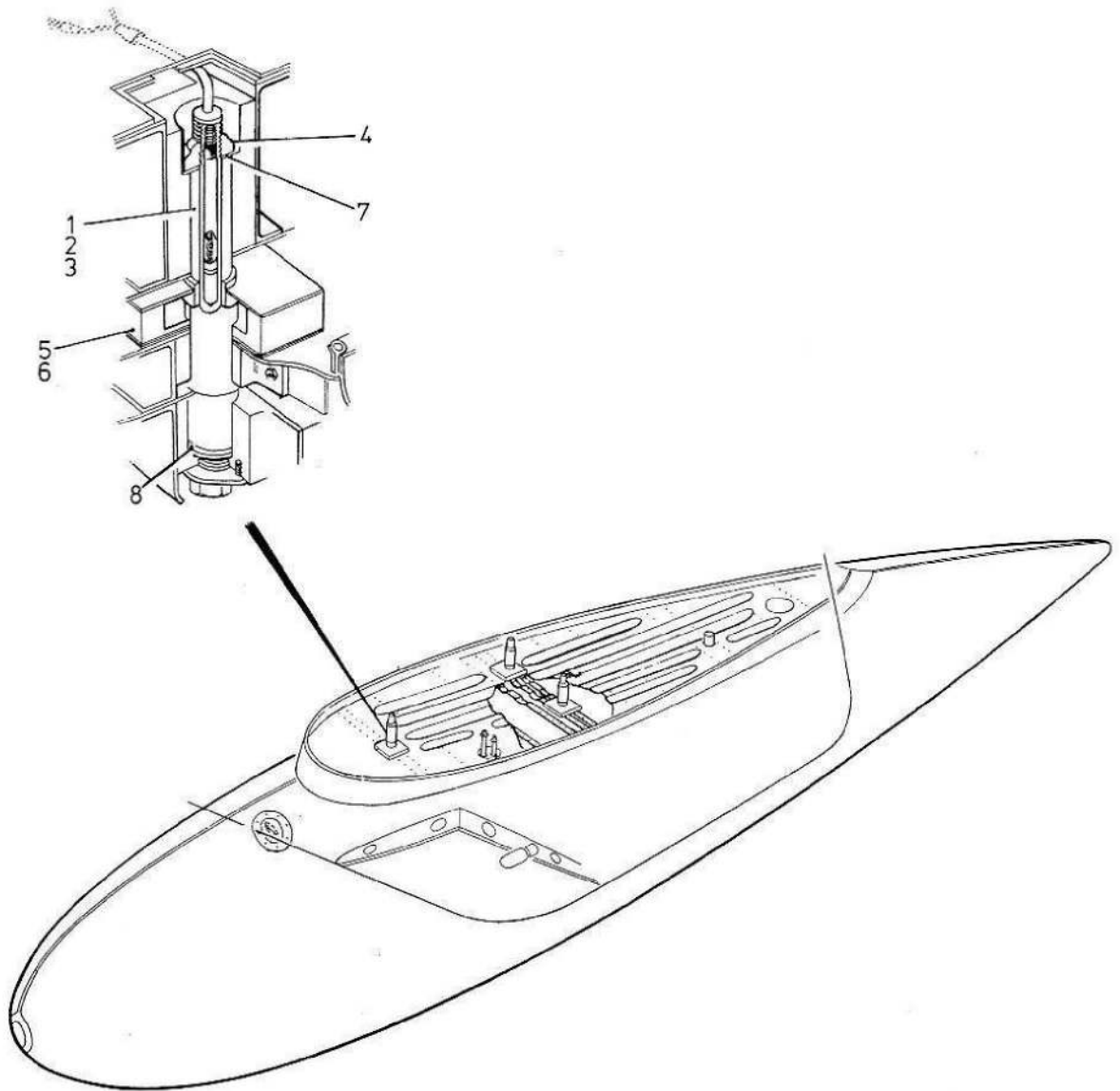
MISCELLANEOUS
ATTACHMENT DETAILS

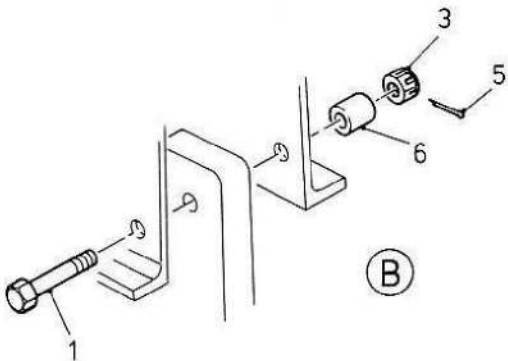
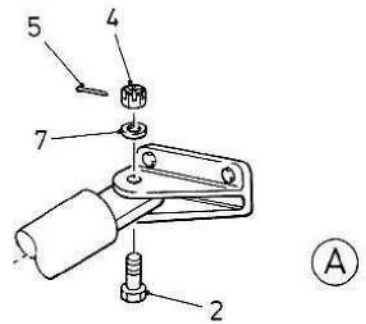
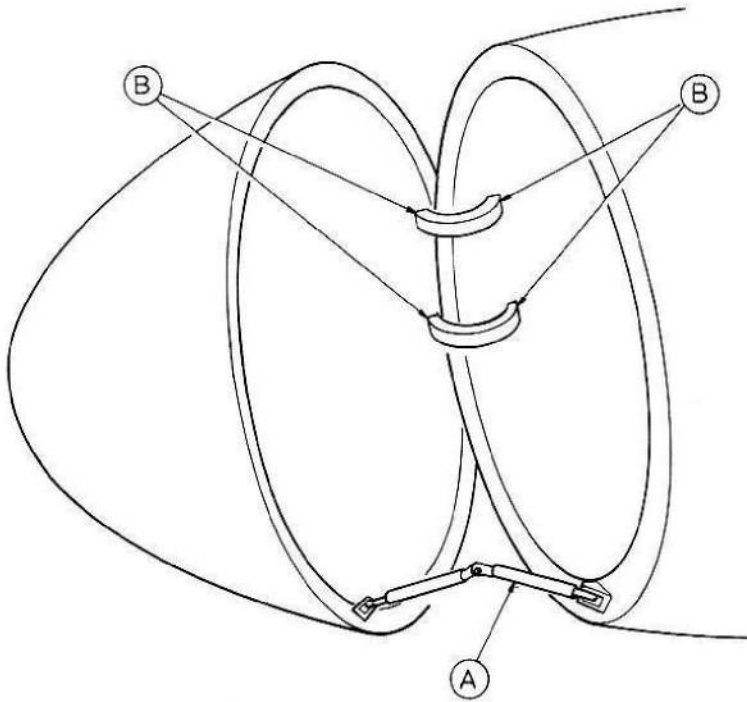
Part No.	Description	No. off	Material Specification	Class of Eqpt M.R. or L.M.	Plate	
EA3.20.689	STRIP, closing, top, aft of spar, port (Supplied undrilled and with trim allowance)	1	-	C	HA9/37	R
EA3.20.690	STRIP, closing, top, aft of spar, starboard (Supplied undrilled and with trim allowance)	1	-	C	HA9/38	R
EA3.20.691	STRIP, closing, bottom, aft of spar, port (Supplied undrilled and with trim allowance)	1	-	C	HA9/39	R
EA3.20.692	STRIP, closing, bottom, aft of spar, starboard (Supplied undrilled and with trim allowance)	1	-	C	HA9/40	R
EA1.11.131	WASHER, distance, rear spar to fuselage	1	L40	C	HA9/41	R
EA1.20.1335	WASHER, main pick-up bolt	2	DTD610	C	HA9/42	R
EEAS27/16GU	WASHER, 2BA	42	DTD124	C	HA9/43	R
AGS163/C	WASHER, spring, 2BA	12	-	C	HA9/44	R
AGS2036/C	WASHER, locking, 2BA	12	-	C	HA9/45	R
SP13/C	WASHER, 2BA	1	-	C	HA9/46	R
SP124/P	WASHER, 9/16 in.	7	-	C	HA9/47	R
SP15/S	WASHER, 3/4 in.	1	-	C	HA9/48	R
SP16/N	WASHER, 1/4 in.	1	-	C	HA9/49	R

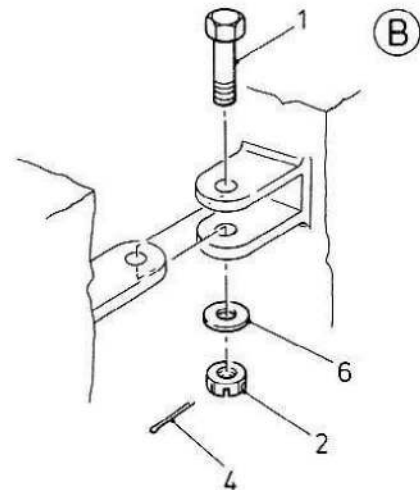
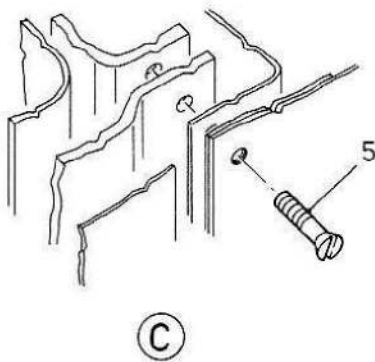
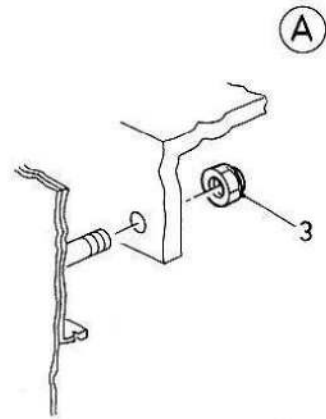
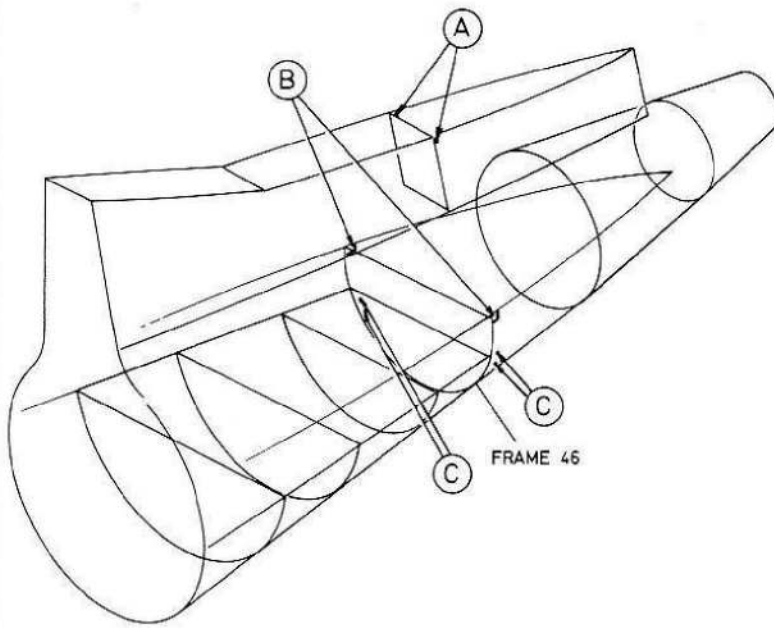


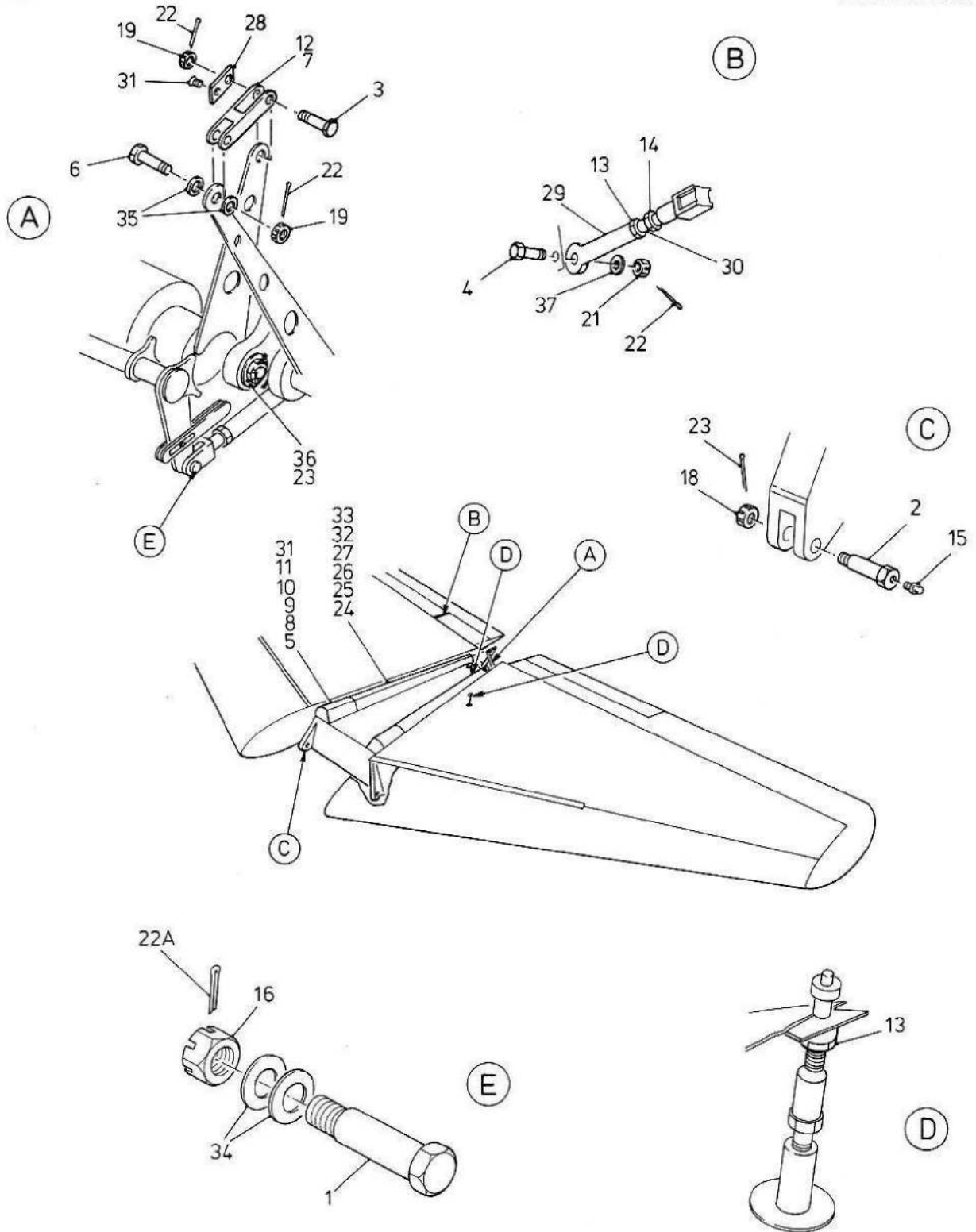


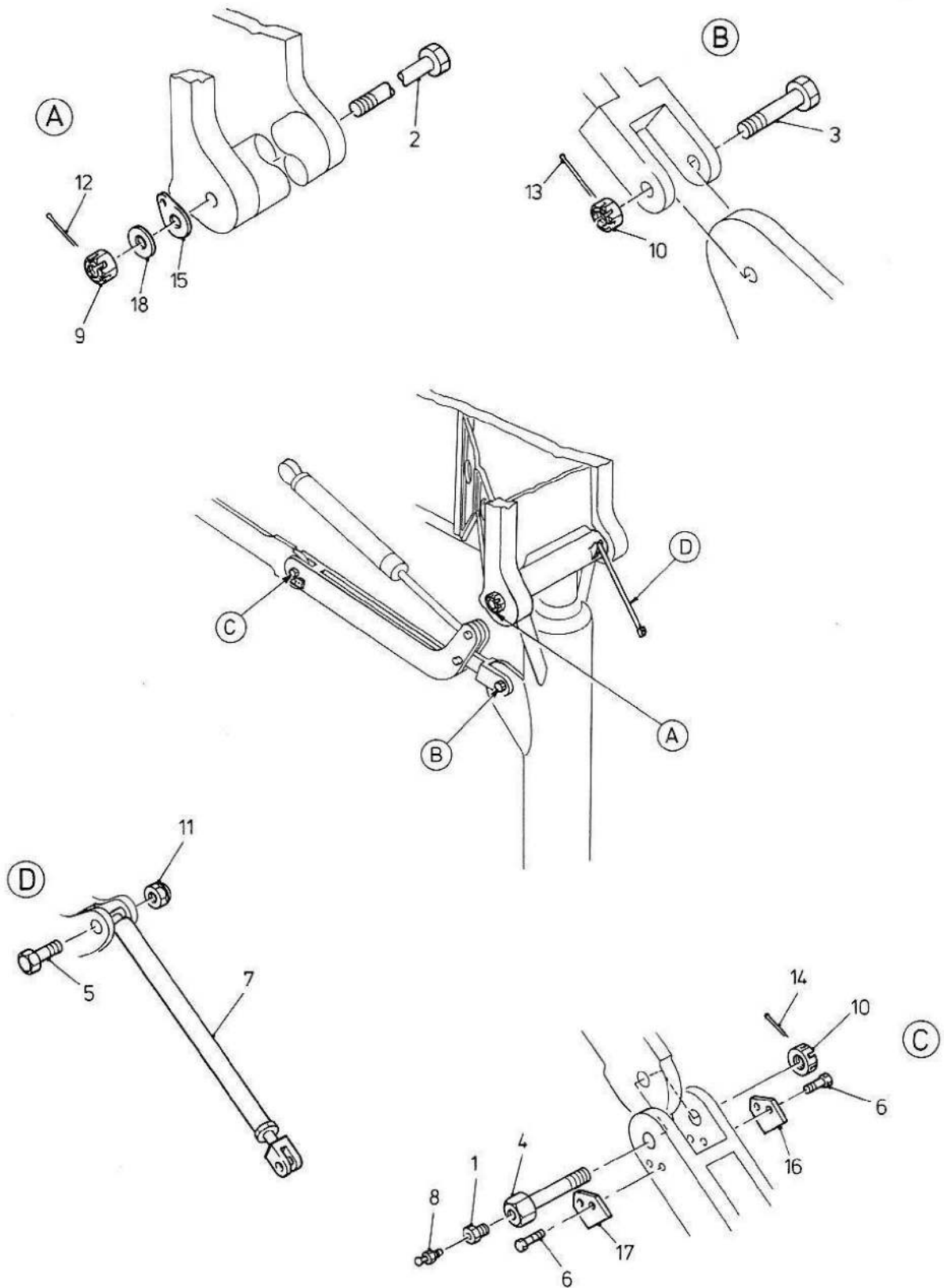


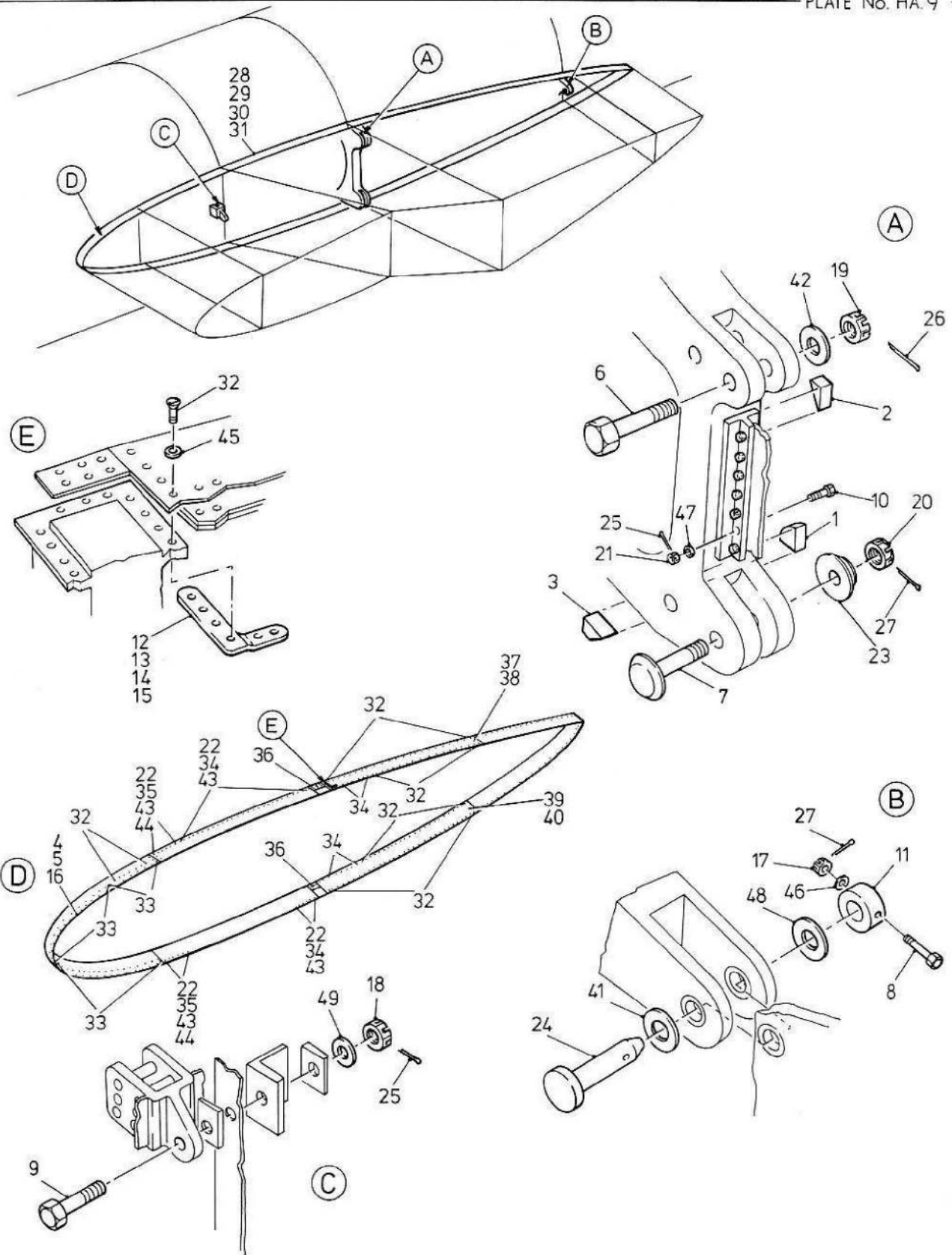












- 32
- 33
- 34
- 35
- 36
- 22
- 43
- 44

CANBERRA PR. Mk.9 — WING ATTACHMENT

This file was downloaded
from the RTFM Library.
Link: www.scottbouch.com/rtfm

Please see site for usage terms,
and more aircraft documents.

