

SERVICES
DEMISTING CANOPY

Ref. No	Part No.	Description						No. of	Material Specification	Class of Eqp. M.F. or L.M.	Plate No.
		1	2	3	4	5	6				
	-	CANOPY DEMISTING (EB8.76.101)							-		
25756	EA9.76.17	Spares for:- AIR DRIER Assembly						1	-	A	MB.1,2
27B/2900 21254	Vokes A12681 EA3.76.107	Spares for:- FILTER VALVE, Group						1 1	- -	B B	MB.2 MB.2
2843	EA3.76.147	Spares for:- SEAL, rubber						1	Rubber	C	MB.2
2844	EA3.76.149	SPRING, valve						2	Spring Steel	C	MB.2
28E/19826 2842	SP21/N EA3.76.105	Attachment of valve to drier Clip						2	-	C	MB.2
25892	EA9.76.407	Hose, connecting						1	Rubber	C	MB.3
31222	EA9.76.407	BAG, alumina (full)						1	-	B	MB.2
	EB8.17.101	BLANKET, o/w window						1	-	C	MB.1
	EA9.76.27	BLOWER, Unit Assembly						1	-	-	MB.1
5UD/6193 30461	EA9.76.207 EB8.76.99	Spares for:- BLOWER UNIT						1	-	A	MB.1
12533	EA9.76.227	COUPLING, $\frac{5}{8}$ in. x $\frac{5}{8}$ in.						1	DTD423	C	MB.1
	EA9.76.41	FILTER, Air Group						1	-	B	MB.1,2
	EA9.76.55	Spares for:- BOLT, for wing nut						1	S95		MB.2
	EA9.76.219	CAP, end $\frac{3}{4}$ in BSP						1	DTD683		MB.2
1892	Automotive Products MFA36A	CAP, end, hose connection						1	DTD683		MB.2
8978	EA3.76.67	ELEMENT, filter "Purolator"						1	-	C	MB.2
1818	EA3.76.75	PIUG, sealing						1	DTD683	C	MB.2
1819	EA3.76.71	SPRING,						1	DTD215	C	MB.2
1820	EA9.76.213	WASHER, sealing rubber						2	S.H.NO. 30	C	MB.2
28E/19826 34433	SP91/N EB8.76.177	WASHER, sealing rubber						1	S.H.No. 30	C5	MB.2
12525	EA9.76.131	Attachment of filter to bracket Clip, type "J"						2	-	C	MB.2
30464	EA9.76.185	HOSE, Connecting (Mod 3825)						1	Rubber	C	MB.1
30463	EA9.76.124	HOSE, connecting						2	Rubber	C	MB.1
31224	EB8.76.109	HOSE, connecting (Make from ref.12526)						6	-	LM	MP
34223	EB8.76.107 EB8.76.5	HOSE, connecting						2	Rubber	C	
	EB8.76.7	HOSE, connecting						3	Rubber		
		PIPE, blower to drier						1	-		
		PIPE, drier to tee piece at frame 5						1			
		PIPE, $\frac{3}{8}$ in. o/d, tee-piece at frame 5 to port quarter panel (See pipe chart)						1			
		PIPE, $\frac{3}{8}$ in. o/d, tee-piece at frame 5 to starboard quarter panel (See pipe chart)						1			

RESTRICTED

SERVICES
DE MISTING CANOPY

Ref. No	Part No.	Description						No. off	Material Specification	Class of Eqt. M.P. or L.M.	Plate No.
		1	2	3	4	5	6				
34434	EB8.76.173	PIPE, $\frac{3}{8}$ in.						1	-	C	MB.1
34435	EB8.76.175	PIPE, $\frac{3}{8}$ in.						1	-	C	MB.1
1438500	EB8.76.171	PIPE, $\frac{3}{8}$ in.						1	-	C	MB.1
	EB8.76.15	PIPE, $\frac{3}{8}$ in.						1	-		MB.1
32305	EB8.76.131	PIPE, $\frac{3}{8}$ in.						1	-	C	MB.1
	EB8.76.169	PIPE, $\frac{3}{8}$ in.						1	-		MB.1
	EB8.76.113	PIPE, $\frac{3}{8}$ in.						1	-		MB.1
	EB8.76.111	PIPE, $\frac{3}{8}$ in.						1	-		MB.1
	EB8.76.115	PIPE, $\frac{3}{8}$ in.						1	-		MB.1
	EB8.76.117	PIPE, $\frac{3}{8}$ in.						1	-		MB.1
1439223	EB8.76.129	PIPE, $\frac{3}{8}$ in.						1	-	C	MB.1
32581	EB8.76.141	PIPE, $\frac{3}{8}$ in.						1	-	C	MB.1
32584	EB8.76.147	PIPE, $\frac{3}{8}$ in.						1	-	C	MB.1
32585	EB8.76.159	TEE-PIECE						1	-	C	MB.1
	EA9.76.189	WASHER, blower attachment (Make from 32D/162)						2	Rubber	IM	MB.1

SERVICES
DE-MISTING WINDSCREEN

Ref. No	Part No.	Description						No. off	Material Specification	Class of Eqpt. M.R. or L.M.	Plate No.
		1	2	3	4	5	6				
	-	WINDSCREEN DE-MISTING (EB8.75.1269)						-	-	-	MB.3
27UA/1243	Godfrey	CLAMP, pipe						4	-	C	MB.3.6
14478	G43/A	COUPLING, tee, pilot's floor between						1	-	C	MB.4
	EB8.75.1391	frame 4-5									
14479	EB8.75.1481	FAIRLEAD, stringer, 2-3 frame 5, port						1	LFS21	C	MB.3.5
33033	HSD	FILTER, (Mod 3271)						1	-	C	MB.3
	AWE/150/7										
13784	Walker & Co	GASKET "Metaflex"						2	-	C	MB.3.6
	JW54866E/1										
14480	EB8.75.1495	LAGGING } for pipe at frame 8						1	Glasscloth	C	MB.4
14481	EB8.75.1497	LAGGING }						1	Glasscloth	C	MB.4
14482	EB8.75.1499	LAGGING } for pipe at frame 7						1	Glasscloth	C	MB.4
14483	EB8.75.1501	LAGGING }						1	Glasscloth	C	MB.4
14484	EB8.75.1503	LAGGING } for pipe forward frame 7						1	Glasscloth	C	MB.4
14485	EB8.75.1505	LAGGING }						1	Glasscloth	C	MB.4
14486	EB8.75.1507	LAGGING } for pipe at frame 6						1	Glasscloth	C	MB.4
14487	EB8.75.1509	LAGGING }						1	Glasscloth	C	MB.4
14488	EB8.75.1511	LAGGING } for pipe at frame 5						1	Glasscloth	C	MB.4
14489	EB8.75.1513	LAGGING }						1	Glasscloth	C	MB.4
14490	EB8.75.1515	LAGGING } for pipe forward frame 5						1	Glasscloth	C	MB.4
14491	EB8.75.1517	LAGGING }						1	Glasscloth	C	MB.4
14495	EB8.75.1461	PIPE, heating control valve to tee						1	-	C	MB.4
		coupling									
14496	EB8.75.1463	PIPE, filter to tee coupling						1	-	C	MB.4
33554	EB8.75.3451	PIPE, tee coupling to connection						1	-	C	MB.4
		forward frame 5 (Mod 2751)									
33553	EB8.75.3449	PIPE, connection forward frame 5 to						1	-	C	MB.4
		windscreen (Mod 2751)									
33555	EB8.75.3453	PIPE, joint at pilot's floor to tee						1	-	C	MB.4
		piece (Mod 2751)									
33550	EB8.75.3443	PIPE, tee piece to control valve						1	-	C	MB.4
		(Mod 2751)									
33552	EB8.75.3447	PIPE, control valve to connection						1	-	C	MB.4
		forward frame 5 (Mod 2751)									
33551	EB8.75.3445	PIPE, between connections forward						1	-	C	MB.4
		frame 5 (Mod 2751)									
	EB8.75.3925	PIPE, between connections forward						1	-	C	MB.4
		frame 5 (Mod 4407)									
14499	EB8.75.1469	PIPE, filter to heating control valve						1	-	C	MB.4
31011	EB8.75.3341	PIPE, joint forward frame 5 to tee						1	-	C	MB.4
		piece on windscreen									
14494	EB8.75.1369	PIPE, pressure bulkhead to joint at						1	-	C	MB.4
		pilot's floor									
	-	PIPING, Windscreen De-Misting Aft of						-	-	-	MB.3
		Pressure Bulkhead									
		(EB8.75.703)									
		Spares for:-									
14300	EB8.75.985	ADAPTOR, bulkhead						1	DTD525	C	MB.3.6
		Attachment of adaptor to bulkhead									
28D/9133011	A25/2C	Bolt, 2BA						6	-	C	MB.6
14302	EB8.75.987	Gasket						1	Langite	C	MB.6
28W/9419402	SP13/C	Washer, 2BA						6	-	C	MB.6

SERVICES
DE MISTING WINDSCREEN

Ref. No	Part No.	Description						No. off	Material Specification	Class of Eqt. M.R. or L.M.	Plate No.
		1	2	3	4	5	6				
27UA/1243	Godfrey G43/A										
14301	EB8.75.997							22	-	C	MB.3.6
14303	EB8.75.881							35	-	C	MB.3.6
14304	EB8.75.883							1	Glasscloth	C	MB.4
14305	EB8.75.885							1	Glasscloth	C	MB.4
14306	EB8.75.887							1	Glasscloth	C	MB.4
14307	EB8.75.889							1	Glasscloth	C	MB.4
14308	EB8.75.891							1	Glasscloth	C	MB.4
14309	EB8.75.893							1	Glasscloth	C	MB.4
14310	EB8.75.895							1	Glasscloth	C	MB.4
14311	EB8.75.897							1	Glasscloth	C	MB.4
14312	EB8.75.899							1	Glasscloth	C	MB.4
14313	EB8.75.901							1	Glasscloth	C	MB.4
14314	EB8.75.903							1	Glasscloth	C	MB.4
31029	EB8.75.3321							1	Glasscloth	C	MB.4
31030	EB8.75.3323							1	Glasscloth	C	MB.4
14315	EB8.75.905							1	Glasscloth	C	MB.4
14316	EB8.65.907							1	Glasscloth	C	MB.4
14317	EB8.75.909							1	Glasscloth	C	MB.4
14318	EB8.75.911							1	Glasscloth	C	MB.4
14321	EB8.75.917							1	Glasscloth	C	MB.4
14322	EB8.75.919							1	Glasscloth	C	MB.4
14323	EB8.75.921							1	Glasscloth	C	MB.4
14324	EB8.75.923							1	Glasscloth	C	MB.4
14329	EB8.75.933							1	Glasscloth	C	MB.4
14330	EB8.75.935							1	Glasscloth	C	MB.4
14333	EB8.75.941							1	Glasscloth	C	MB.4
14334	EB8.75.943							1	Glasscloth	C	MB.4
31948	EB8.75.3429							1	Glasscloth	C	MB.4
31949	EB8.75.3431							1	Glasscloth	C	MB.4
32227	EB8.75.3365/B							2	Glasscloth	C	MB.3.6
14341	EB8.75.709							1	-	C	MB.4
14342	EB8.75.711							1	-	C	MB.4
14343	EB8.75.713							1	-	C	MB.4
14344	EB8.75.715							1	-	C	MB.4
14345	EB8.75.717							1	-	C	MB.4
14346	EB8.75.719							1	-	C	MB.4
14347	EB8.75.721							1	-	C	MB.4
14348	EB8.75.723							1	-	C	MB.4
31028	EB8.75.3209							1	-	C	MB.4
13784	Walker & Co. JW54866E/1							11	-	C	MB.3.6
31217	Bells Asbestos BAS29-7-J29							QR	-	C	MB.4

SERVICES
DE MISTING - WINDSCREEN

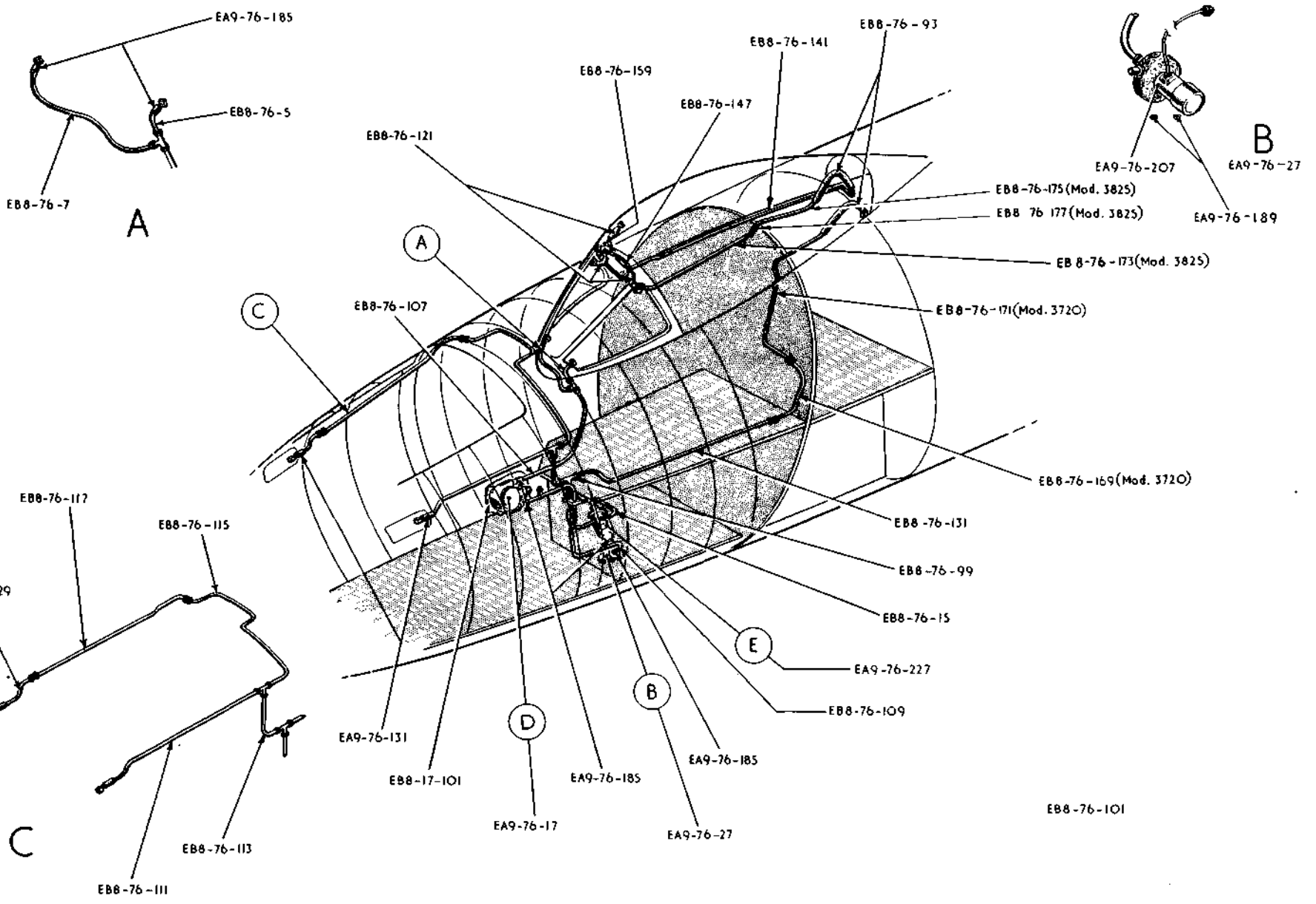
Ref. No	Part No.	Description	No. off	Material Specification	Class of Eqpt. M.R. or L.M.	Plate No.
	EB8.75.1449	VALVE, Heating Control Assembly	-	-	-	MB.3.5
12539	EA9.75.341	VALVE, Heating Control Group	1	-	B	MB.5
		Spares for:-				
30797	EA9.75.345	CAP, upper	1	S110	C	MB.5
12540	EA9.75.351	CAP, diaphragm	1	-	C	MB.5
12541	EA9.75.361	DIAPHRAGM	1	-	C	MB.5
12542	EA9.75.347	PLATE, valve	1	S110	C	MB.5
12544	EA9.75.349	PLATE, diaphragm base	1	-	C	MB.5
12543	EA9.75.353	PLUNGER	1	S110	C	MB.5
12545	EA9.75.355	SPRING	1	DTD215	C	MB.5
12548	EA9.75.605	WASHER, joint	2	Klingerite	C	MB.5
12547	EA9.75.363	WASHER, sealing	1	Fibolex	C	MB.5
		Attachment of valve to brackets				
28D/1010658	A25/1B	Bolt, 4BA	4	-	C	MB.5
28M/10287	AGS2001/B1	Nut, 4BA	4	-	C	MB.5
	Normalair					
27KD/1440	512220	VALVE, non-return, insert type	1	-	B	MB.3
	-	WINDSCREEN, De-Misting (EB8.75.1525)	-	-	-	MB.3.5
		Spares for:-				
12550	EA7.75.273	BOLT, banjo, feed pipe	1	DTD683	C	MB.5
1708	EA3.75.145	CONNECTION, hose for duct	1	Silastic	C	MB.5
22915	EA9.75.607	DUCT, air outlet	1	-	C	MB.5
22917	EA9.75.615	DUCT, air outlet	1	-	C	MB.5
25751	EA9.75.835	ELEMENT, Bi-metal Group	1	-	B	MB.5
		Spares for:-				
25754	EA9.75.841	BARREL, valve	1	S80	C	MB.5
25752	EA9.75.837	ELEMENT	1	-	C	MB.5
12556	EA9.75.267	NUT, barrel securing	1	S80	C	MB.5
12557	EA9.75.271	SCREW, 2BA, attachment of element to channel	2	S80	C	MB.5
25755	EA9.75.843	VALVE, needle	1	S80	C	MB.5
28F/9429636	AGS1186/MK3	WASHER, sealing, barrel securing	1	-	C	MB.5
22913	EA9.75.517	GASKET, duct	1	Langite	C	MB.5
13222	EA9.75.889	HOUSING, element	1	-	C	MB.5
13131	EA9.75.845	LOCKNUT, pipe attachment to element	1	S80	C	MB.5
13132	EA9.75.847	LOCKPLATE	1	L72	C	MB.5
31039	EB8.75.3223	PIPE, demister, port	1	-	C	MB.4
31040	EB8.75.3225	PIPE, demister, starboard	1	-	C	MB.4
22912	EA9.75.497	PACKING, feed pipe	1	Fibolex	C	MB.5
12561	EA9.75.503	TEE-PIECE	1	L65	C	MB.4
12562	EA9.75.279	WASHER, tee-piece	1	Fibolex	C	MB.5
22916	EA9.75.611	WASHER, "Fibolex" for duct	1	Fibolex	C	MB.5
12564	EA9.75.639	WASHER, insulating, tee-piece	1	Fibolex	C	MB.5

SERVICES
DE-MISTING

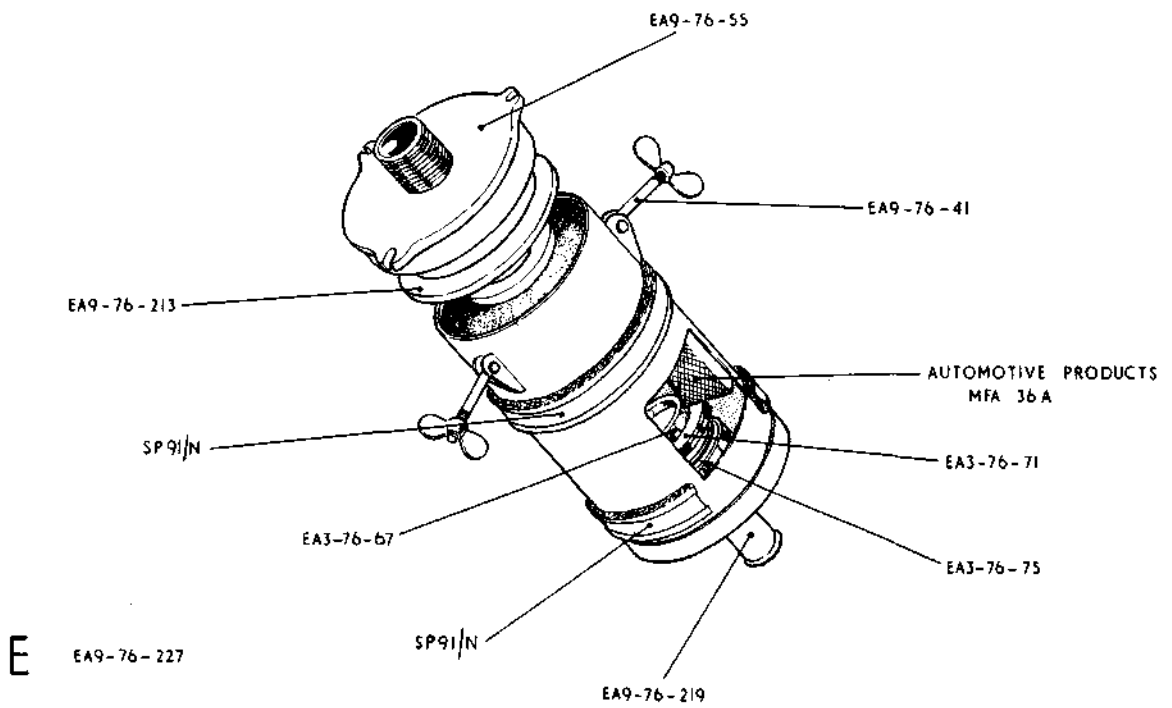
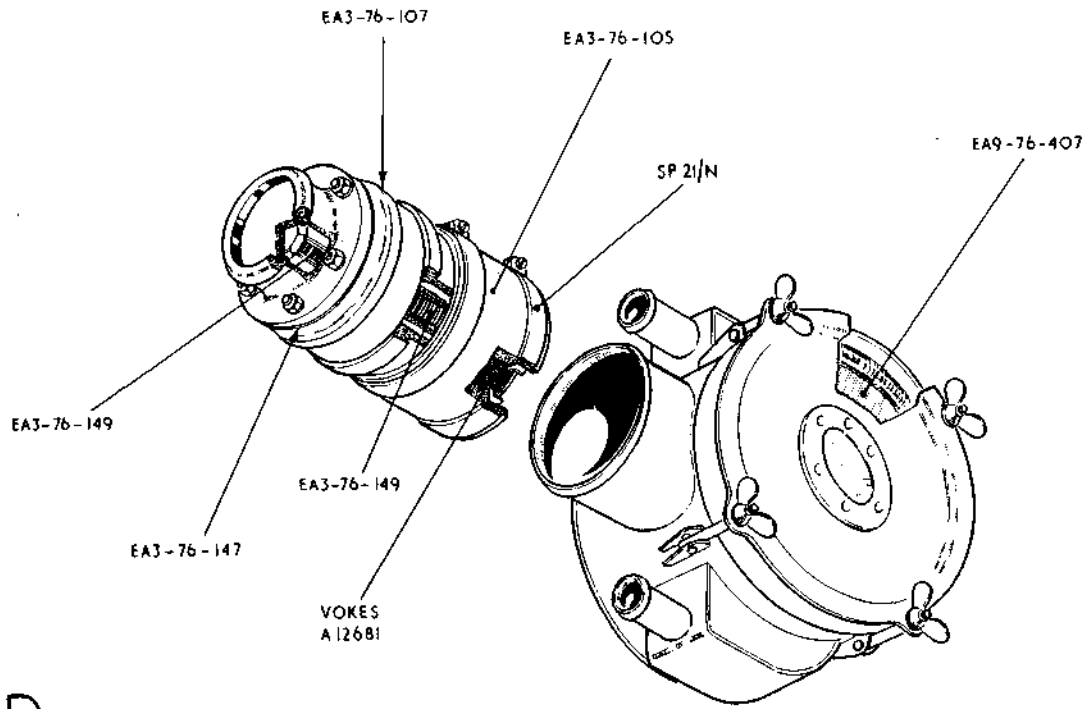
Ref. No	Part No.	Description						No. off	Material Specification	Class of Eqt. M.R. or L.M.	Plate No.
		1	2	3	4	5	6				

CANBERRA P.R.M.K.9

DE MISTING

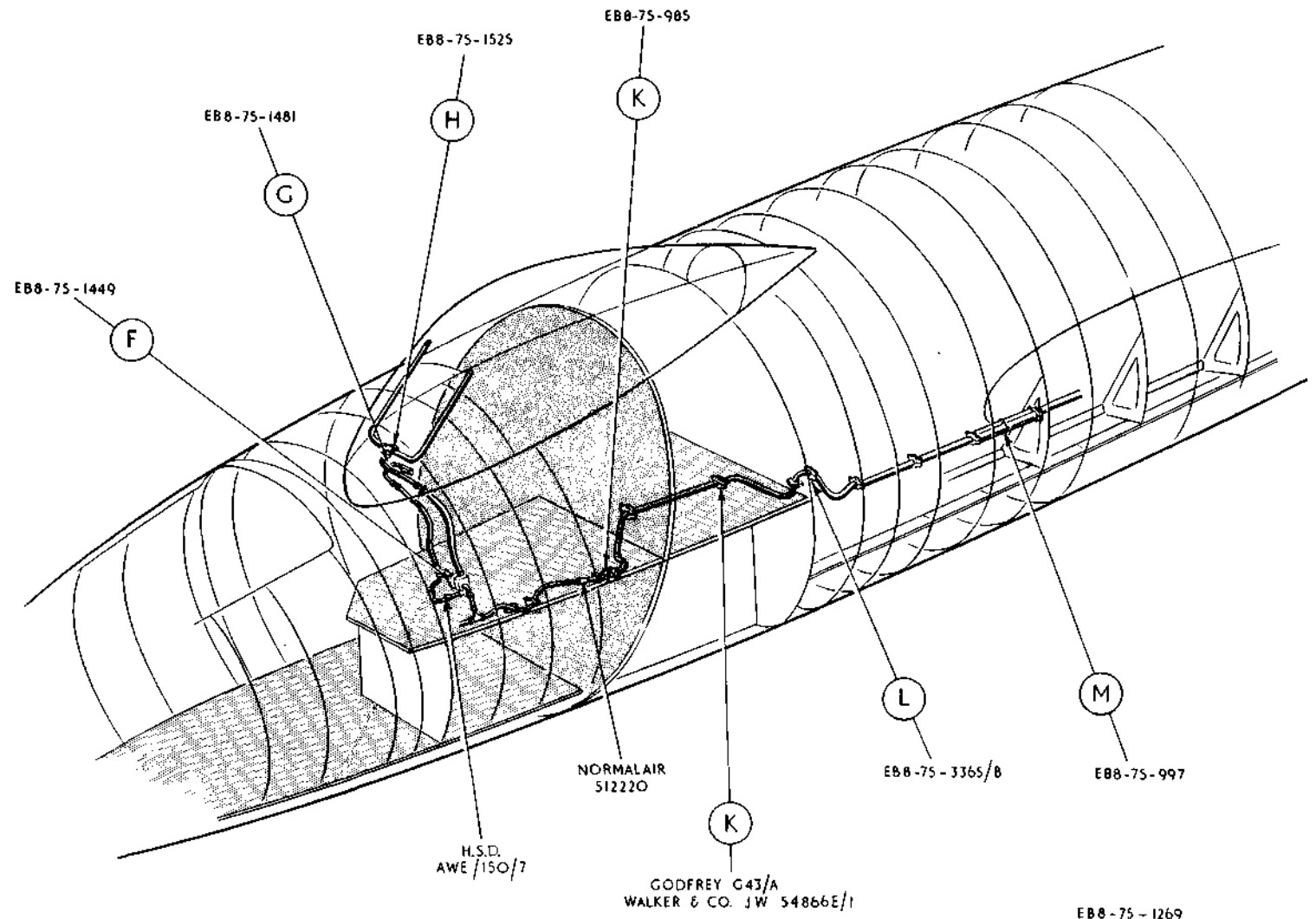


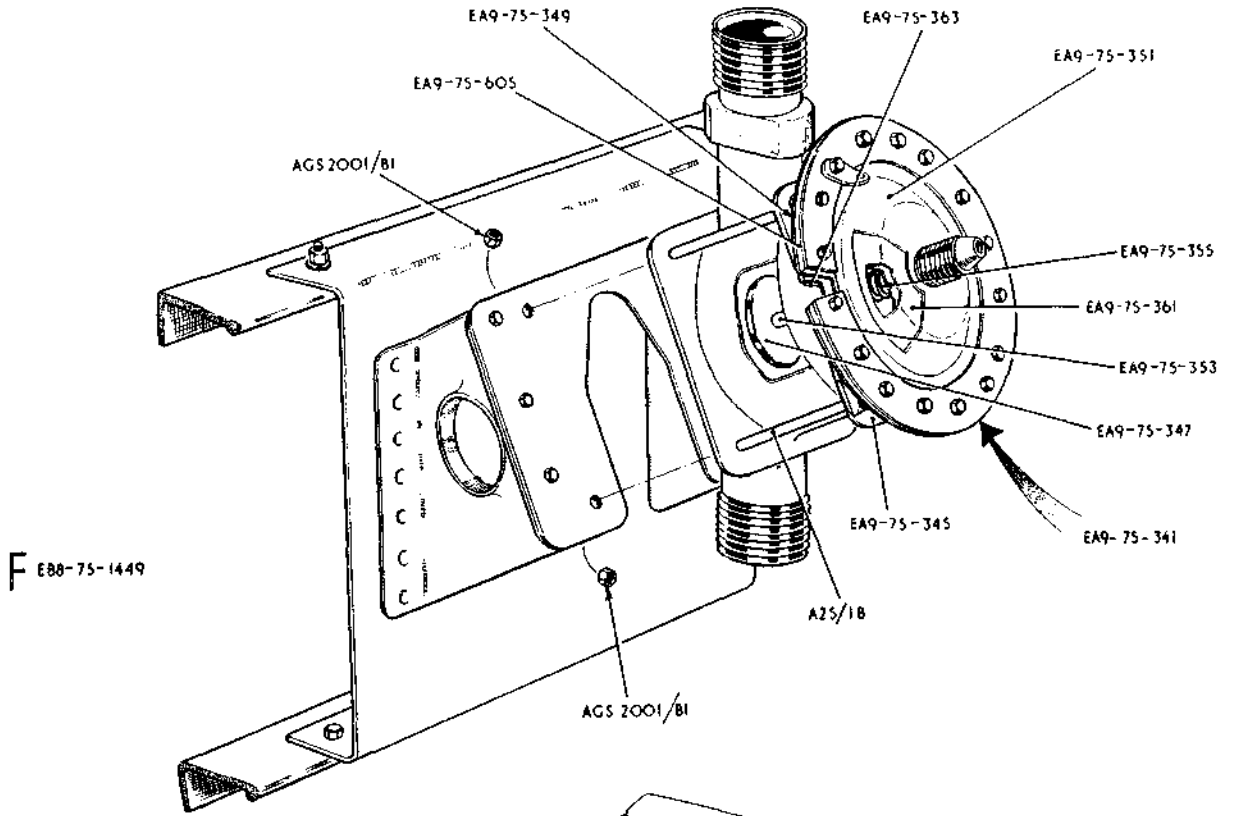
C



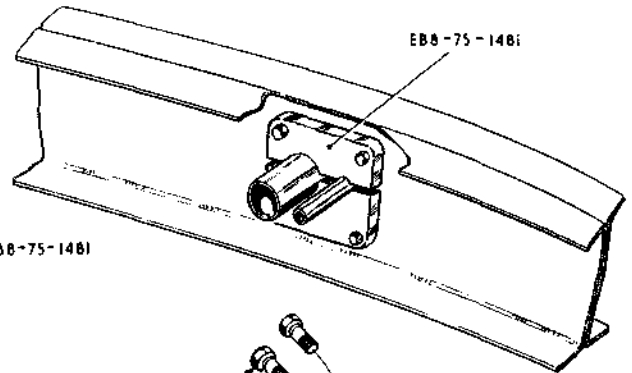
CANBERRA P.R.M.K.9

DE MISTING

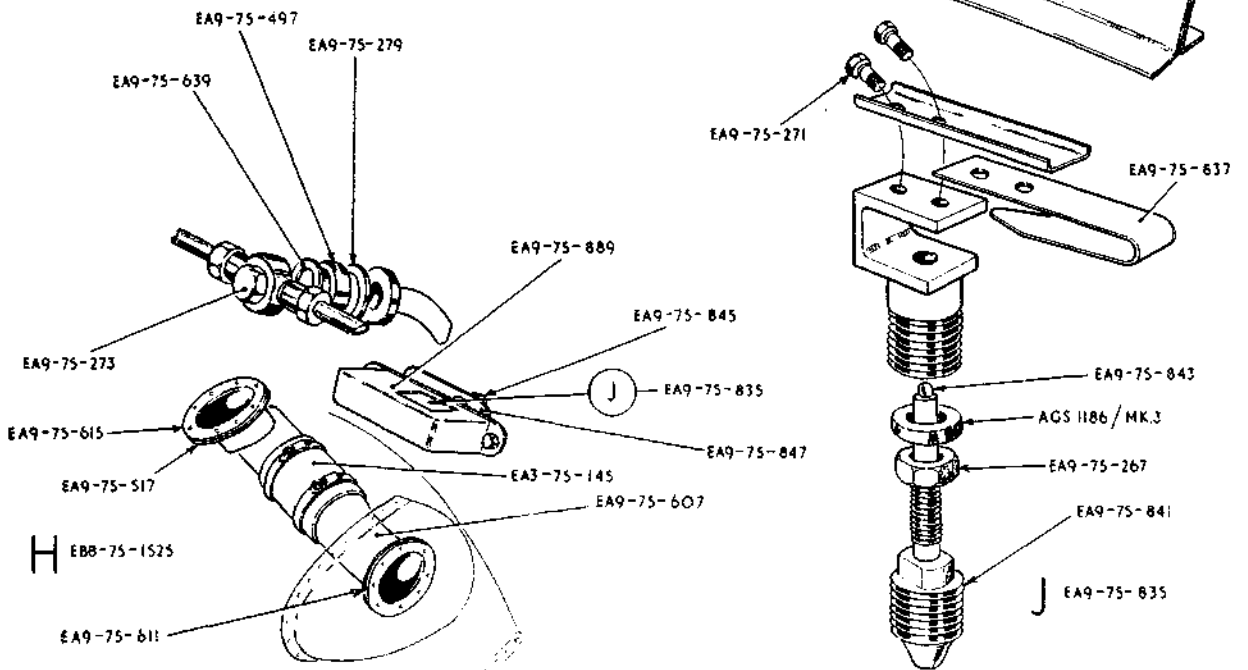




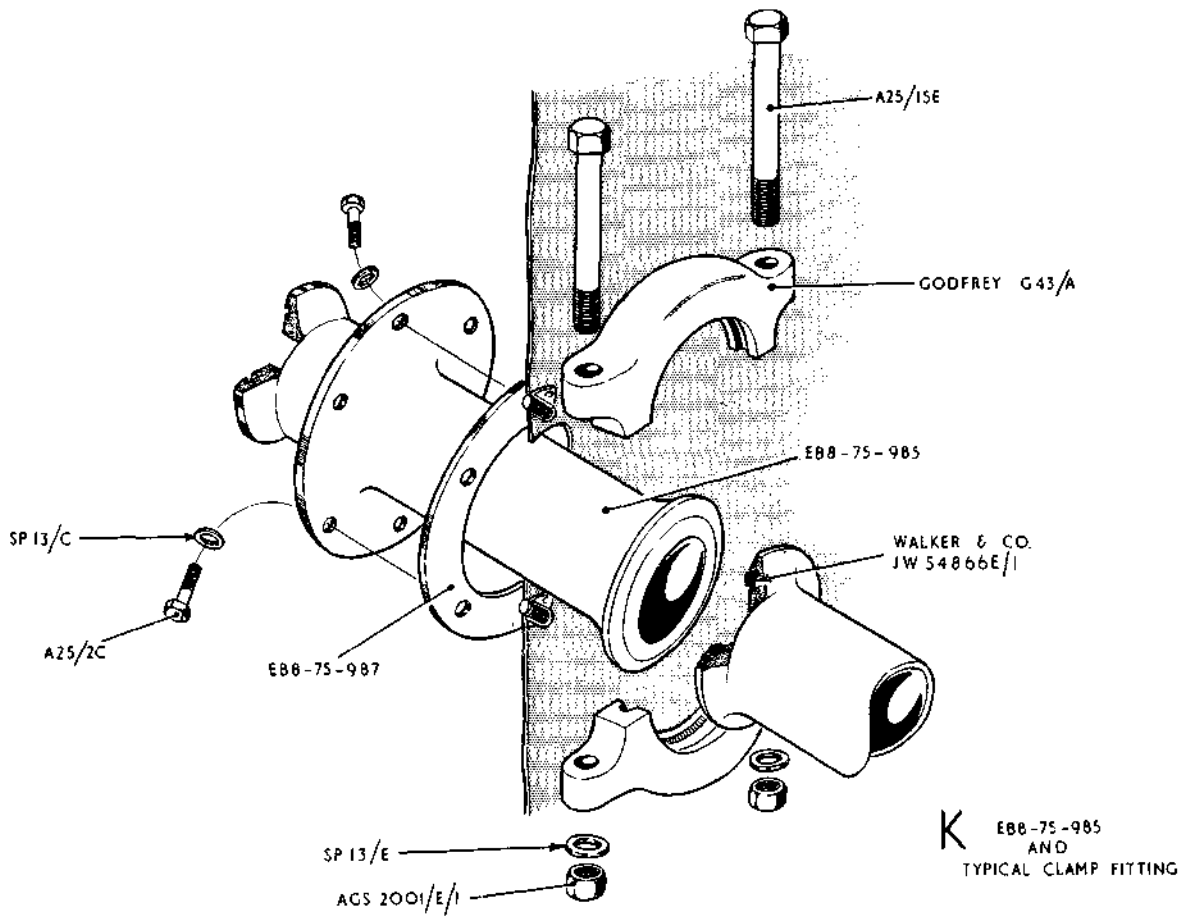
F E88-75-1449



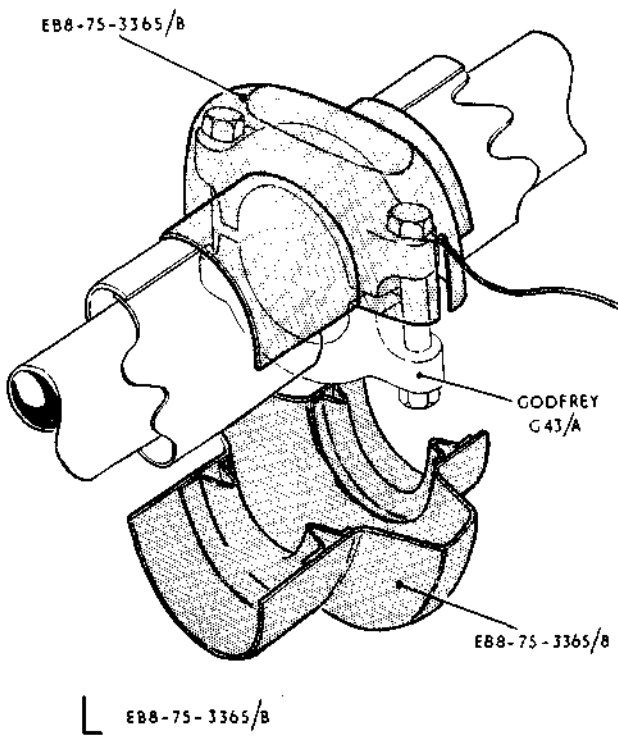
G E88-75-1481



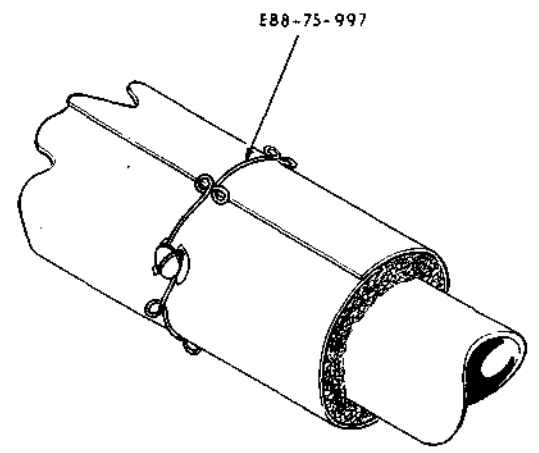
H E88-75-1525



K EBB-75-985 AND TYPICAL CLAMP FITTING



L EBB-75-3365/B



M EBB-75-997

This file was downloaded
from the RTFM Library.

Link: www.scottbouch.com/rtfm

Please see site for usage terms,
and more aircraft documents.



TELEBRIEF
CONNECTIONS

E