

SERVICES

HYDRAULIC - REAR FUSELAGE

Ref. No	Part No.	Description						No. off	Material Specification	Class of Eqp't. M.F. or L.M.	Plate No.
		1	2	3	4	5	6				
-	-	HYDRAULIC SYSTEM, REAR FUSELAGE INSTALLATION (EB8.73.309)						-	-	-	
-	-	PIPING, Between Frame 31-36 Assembly (EB8.73.345) Spares for:-						-	-	-	
27QM/4143355	Dowty 11843Y A01	ACCUMULATOR (For spares see AP4515B, Vol. 3 Pt.1) Attachment of accumulator to mounting Clip						1	-	A	MH.1
28E/9208192	SP91/P	Attachment of accumulator to mounting Clip						2	-	C	
27QM/4170079	Dowty Rotol Ltd. 8795	ACCUMULATOR (For spares see AP4515A, Vol. 3 Pt.1) Attachment of accumulator to mounting Clip						1	-	A	MH.1
28E/2027591	SP91/L	Attachment of accumulator to mounting Clip						2	-	C	
30923	Short & Harland FD173/4	ADAPTOR, cone						1	-	C	MH.1
27Q/4170099	Dowty Rotol Ltd. BM341/11	ADAPTOR, cone						1	-	C	MH.1
28F/9129085	AGS1102/A	COUPLING						5	-	C	MH.1
28F/9471001	AGS1102/C	COUPLING						4	-	C	MH.1
28F/9476124	AGS1118/C	COUPLING, tee-piece, $\frac{3}{8}$ in. x $\frac{3}{8}$ in. x $\frac{3}{8}$ in.						1	-	C	MH.2
-	-	PANEL, Inflation Accumulator Mounting (EB8.73.1675) Spares for:-						-	-	-	MH.1
28F/1013599	AGS1142/A	ADAPTOR, nipple						1	-	C	MH.1
30320	Short & Harland 7021	COCK, Multiple Inflation Spares for:-						1	-	B	MH.1
30321	702103 702113	CHAIN NUT						1 4	-	M C	MH.1
30322	PD151/8	RING, sealing						4	-	C	MH.1
30323	702117	SPANNER						1	-	C	MH.1
30324	702101	VALVE, o/w glide and washer						4	-	C	MH.1
30325	702116	WASHER, retaining						1	-	C	MH.1
6A/1043429	-	GAUGE, pressure, Mk.14 L.L. Attachment of gauge to panel						1	-	B	
28D/9140638	A25/4B	Bolt, 4BA						4	-	C	
28W/9419414	SP15/B	Washer, 4BA						4	-	C	
30630	EB8.73.1929	LABEL, "HYDRAULIC ACCUMULATORS"						1	DTD339B	C	MH.1
30631	EB8.73.1931	LABEL, "PORT LOWER"						1	DTD339B	C	MH.1
30632	EB8.73.1937	LABEL, "PORT UPPER"						1	DTD339B	C	MH.1
30635	EB8.73.2031	LABEL, "STARBOARD LOWER"						1	DTD339B	C	MH.1

RESTRICTED

SERVICES
HYDRAULIC - REAR FUSELAGE

Ref. No	Part No.	Description						No. off	Material Specification	Class of Eqpt. M.R. or L.M.	Plate No.
		1	2	3	4	5	6				
30634	EB8.73.2029							1	DTD339B	C	MH.1
28581	EB8.73.2329							1	DTD339B	C	MH.1
28690	EB8.73.2331							1	DTD339B		MH.1
6A/2800	-							1	-	C	
30636	EB8.73.1671							1	-	C	MH.1
30637	EB8.73.1673							1	-	C	MH.1
30326	Short & Harland 700511							1	-	B	MH.1
	High Pressure Components A.190							1	-	B	MH.1
	High Pressure Components A.190 Mk.2							1	-	B	MH.1
4GD/9449322								1	-	B	MH.1
27849	EB8.73.1909							1	-	C	
37285	EB8.73.2735							1	-	C	MH.1
27848	EB8.73.1911							1	-	C	
37286	EB8.73.2737							1	-	C	MH.1
27847	EB8.73.1913							1	-	C	
37287	EB8.73.2739							1	-	C	MH.1
27851	EB8.73.1905							1	-	C	MH.1
27850	EB8.73.1907							1	-	C	MH.1
27845	EB8.73.1921							1	-	C	
37288	EB8.73.2741							1	-	C	MH.1
30924	EB8.73.2269							1	-	C	

SERVICES
HYDRAULIC - REAR FUSELAGE

Ref. No	Part No.	Description						No. off	Material Specification	Class of Eqpt. M.F. or L.M.	Plate No.
		1	2	3	4	5	6				
32160	EB8.73.2745						PIPE, $\frac{3}{16}$ in. (Mod 3065) (accumulator charging pressure) connection forward frame 34 - Messier accumulator	1	-	C	MH.1
27844	EB8.73.1923						PIPE, $\frac{3}{16}$ in. o/d (Pre Mod 3065)	1	-	C	
37289	EB8.73.2743						PIPE, $\frac{3}{16}$ in. o/d (Mod 3065) (accumulator charging pressure) inflation cock)-connection forward frame 34	1	-	C	MH.1
30925	EB8.73.2271						PIPE, $\frac{3}{16}$ in. o/d (Pre Mod 3065)	1	-	C	
32161	EB8.73.2747						PIPE, $\frac{3}{16}$ in. o/d (Mod 3065) (accumulator charging pressure) connection forward frame 34 - Dowty accumulator	1	-	C	MH.1
27842	EB8.73.1955						PIPE, $\frac{3}{8}$ in. o/d (fuel unit pressure primary) connection forward frame 31 - tee-piece forward frame 36 (See pipe chart)	1	-	C	MH.1
27843	EB8.73.1927						PIPE, $\frac{3}{16}$ in. o/d (services return) connection forward frame 31 - connection forward frame 36 (See pipe chart)	1	-	C	MH.1
30638	EB8.73.1917						PIPE, $\frac{3}{8}$ in. o/d (services pressure) connection forward frame 31 - non return valve	1	-	C	
27846	EB8.73.1915						PIPE, $\frac{3}{8}$ in. o/d (services return) connection forward frame 31 - connection forward frame 36 (See pipe chart)	1	-	C	MH.1
30639	EB8.73.1957						PIPE, $\frac{3}{8}$ in. o/d (fuel unit pressure primary) tee-piece forward frame 36 - Dowty accumulator	1	-	C	MH.1
30640	EB8.73.1959						PIPE, $\frac{3}{8}$ in. o/d (services pressure) Dowty accumulator - tee-piece aft frame 36	1	-	C	MH.1
30927	EB8.73.2275						PIPE, $\frac{3}{16}$ in. o/d (accumulator charging pressure) Dowty accumulator - connection frame 33	1	-	C	MH.1
30926	EB8.73.2273						PIPE, $\frac{3}{16}$ in. o/d (accumulator charging pressure) Dowty accumulator - connection frame 33	1	-	C	MH.1
27841	EB8.73.1967						PIPE, $\frac{3}{16}$ in. o/d (accumulator charging pressure) connection frame 33 - inflation cock (See pipe chart)	1	-	C	MH.1

RESTRICTED

SERVICES
HYDRAULIC - REAR FUSELAGE

Ref. No	Part No.	Description						No. off	Material Specification	Class of Eqpt. M.R. or L.M.	Plate No.
		1	2	3	4	5	6				
27840	EB8.73.1969							1	-	C	MH.1
27W/4619632	Lockheed UMC706							2	-	A	MH.1 MH.2
	-							-	-	-	
27W/4143355	Dowty 11843Y A01							1	-	A	MH.2
28E/9708192	SP91/P							2	-	C	
27Q/4170079	Dowty Rotol Ltd 8795							1	-	A	MH.2
28E/2027591	SP91/L							2	-	C	
27Q/4170099	Dowty Rotol Ltd BM.341/11							1	-	C	MH.2
30923	Short Bros & Harland PD 173/4							1	-	C	MH.2
32846	Short Bros & Harland PD 173/7							2	-	C	MH.2
28E/1014970	AGS1104/A							2	-	C	MH.2
30915	EB8.73.2335							1	-	C	MH.2
30916	EB8.73.2337							1	-	C	MH.2
28E/9513028	AGS1107/E							1	-	C	MH.2
28E/9471001	AGS1102/C							4	-	C	MH.2
28E/8011883	AGS1102/B							2	-	C	MH.2
30641	EB8.73.1863							1	-	C	MH.2
30554	EB8.73.1015							1	-	C	MH.2
32603	Short & Harland 7039X5							1	-	A	MH.2
32505	703902X1							1	-	A	MH.2
32217	PD176/H							1	-	C	MH.2
32213	703813							1	-	C	MH.2
32215	PD151/15							4	-	C	MH.2

SERVICES
HYDRAULIC - REAR FUSELAGE

Ref. No	Part No.	Description						No. off	Material Specification	Class of Eqt. M.F. or L.M.	Plate No.
		1	2	3	4	5	6				
32216	PD151/62							2	-	C	MH.2
32214	703814							2	-	C	MH.2
32220	EB8.73.2449							1	-	C	MH.2
28M/1278190	AGS2001/C1							4	-	C	
32221	EB8.73.2453							2	SI	C	MH.2
28W/9419475	SP15/C							4	-	C	
	Dowty										
27QM/4143680	11897Y.A01							1	-	A	MH.2
28D/9434873	A59/17E							2	-	C	
28D/1215660	A59/4C							8	-	C	
28M/1011475	A27/EP							2	-	C	
28M/9403520	A27/CP							8	-	C	
28W/9419402	SP13/C							8	-	C	
28W/9419821	SP13/E							2	-	C	
27828	EB8.73.2041							1	-	C	MH.2
30917	EB8.73.2279							1	-	C	MH.2
30652	EB8.73.2187							1	-	C	MH.2
27837	EB8.73.1825							1	-	C	MH.2
30918	EB8.73.2281							1	-	C	MH.2
27838	EB8.73.1821							1	-	C	MH.2
27839	EB8.73.1819							1	-	C	MH.2
30648	EB8.73.1851							1	-	C	

SERVICES
HYDRAULIC - REAR FUSELAGE

Ref. No	Part No.	Description						No. off	Material Specification	Class of Eqp. M.R. or L.M.	Plate No.
		1	2	3	4	5	6				
33213	EB8.73.3131				PIPE	$\frac{3}{16}$	in. o/d (services return) connection forward frame 36 - non-return valve (Mod 3267)	1	-	C	MH.2
30919	EB8.73.2283				PIPE	$\frac{1}{4}$	in. o/d (services return) non-return valve - feel unit	1	-	C	MH.2
30643	EB8.73.1833				PIPE	$\frac{1}{2}$	in. o/d (Pre Mod 3065)	1	-	C	
32132	EB8.73.2649				PIPE	$\frac{1}{2}$	in. o/d (Mod 3065)(controls pressure) connection forward frame 36 - filter	1	-	C	MH.2
30644	EB8.73.1835				PIPE	$\frac{1}{2}$	in. o/d (Pre Mod 3065)	1	-	C	
32133	EB8.73.2643				PIPE	$\frac{1}{2}$	in. o/d (Mod 3065) (controls pressure) filter - 4-way piece	1	-	C	MH.2
30645	EB8.73.1839				PIPE	$\frac{1}{2}$	in. o/d (Pre Mod 3065)	1	-	C	
32134	EB8.73.2639				PIPE	$\frac{1}{2}$	in. o/d (Mod 3065)(controls pressure) 4-way piece - selector at frame 38	1	-	C	MH.2
30647	EB8.73.1845				PIPE	$\frac{1}{2}$	in. o/d (Pre Mod 3065)	1	-	C	
32136	EB8.73.2633				PIPE	$\frac{1}{2}$	in. o/d (Mod 3065)(rudder stand-by pressure) selector - tee-piece at frame 38	1	-	C	MH.2
27832	EB8.73.1843				PIPE	$\frac{1}{2}$	in. o/d (Pre Mod 3065)	1	-	C	
37227	EB8.73.2637				PIPE	$\frac{1}{2}$	in. o/d (Mod 3065)(rudder stand-by pressure) tee-piece - connection aft frame 41	1	-	C	MH.2
27833	EB8.73.1837				PIPE	$\frac{1}{2}$	in. o/d (Pre Mod 3065)	1	-	C	
37228	EB8.73.2645				PIPE	$\frac{1}{2}$	in. o/d (Mod 3065)(controls pressure) 4-way piece - Dowty accumulator	1	-	C	MH.2
30646	EB8.73.1841				PIPE	$\frac{1}{2}$	in. o/d (Pre Mod 3065)	1	-	C	
32135	EB8.73.2629				PIPE	$\frac{1}{2}$	in. o/d (Mod 3065)(controls return) selector - 4 way piece	1	-	C	MH.2
30650	EB8.73.1859				PIPE	$\frac{3}{16}$	in. o/d (Pre Mod 3065)	1	-	C	
32138	EB8.73.2627				PIPE	$\frac{3}{16}$	in. o/d (Mod 3065)(controls return) 4-way piece - thermal relief valve	1	-	C	MH.2
30649	EB8.73.1857				PIPE	$\frac{1}{2}$	in. o/d (Pre Mod 3065)	1	-	C	
32137	EB8.73.2641				PIPE	$\frac{1}{2}$	in. o/d (Mod 3065)(controls pressure) relief valve - 4 way piece	1	-	C	MH.2
	EB8.73.1847				PIPE	$\frac{1}{2}$	in. o/d (Pre Mod 3065)	1	-	-	
37225	EB8.73.2625				PIPE	$\frac{1}{2}$	in. o/d (Mod 3065)(Controls return) 4-way piece - connection aft frame 41	1	-	C	MH.2

SERVICES
HYDRAULIC - REAR FUSelage

Ref. No	Part No.	Description						No. off	Material Specification	Class of Eqt. M.R. or L.M.	Plate No.
		1	2	3	4	5	6				
27836	EB8.73.1827							1	-	C	
32666	EB8.73.2631							1	-	C	MH.2
27835	EB8.73.1829							1	-	C	
37229	EB8.73.2647							1	-	C	MH.2
27834	EB8.73.1831							1	-	C	
37230	EB8.73.2651							1	-	C	MH.2
30642	EB8.73.1823							1	-	C	MH.2
30651	EB8.73.2039							1	-	C	
32441	EB8.73.2653							1	-	C	MH.2
27830	EB8.73.1853							1	-	C	
37226	EB8.73.2635							1	-	C	MH.2
27829	EB8.73.1855							1	-	C	
5CW4405150	Thermal Controls TP290							2	-	A	MH.2
27QM4143339	Dowty C7437Y. Mk.E							1	-	A	MH.2
27QM4143333	Dowty 1.00137.003							1	-	A	MH.2

SERVICES
HYDRAULIC - REAR FUSELAGE

Ref. No	Part No.	Description						No. off	Material Specification	Class of Eqt. M.R. or L.M.	Plate No.	
		1	2	3	4	5	6					
27QM/4143197	Dowty G4603.Mk.E							VALVE, Thermal Relief (For spares see AP4515B, Vol.3.Pt.1) Attachment of relief valve to structure	1	-	A	MH.2
28D/1010030	A25/7C							Bolt, 2BA	2	-	C	
36350	EB8.73.1355							Clip, saddle 22G	1	L72	C	
27891	EB8.73.1353							Fairlead	1	LFS21	C	
28M/9433473	AGS2002/C1							Nut, stiff, 2BA	2	-	C	
28W/9419475	SP15/C							Washer, 2BA	2	-	C	
27Q/4170011	Dowty Rotol H.2004							VALVE, non-return	1	-	A	MH.2
	-							PIPING, Aft Camera Door Jacks, Between Frames 34 and 35 Assembly (EB8.73.325) Spares for:-	-	-	-	
28F/1013599	AGS1142/A							ADAPTOR, nipple	4	-	C	MH.3
28F/9129085	AGS1102/A							COUPLING, pipe	2	-	C	MH.3
30625	EB8.73.1717							COUPLING, tee-piece, $\frac{5}{16}$ in. x $\frac{5}{16}$ in. $\frac{3}{8}$ in.	1	-	C	MH.3
27QM/4143500	Dowty 1.00525.001							JACK, camera door (For spares see AP4515B, Vol.3, Pt.1) (Mod 3573) Attachment of jack to mounting brackets	2	-	A	MH.3
28D/1008151	A25/4E							Bolt, $\frac{1}{2}$ in. BSF	1	-	C	
28D/1008145	A25/6E							Bolt, $\frac{1}{2}$ in. BSF	1	-	C	
28M/1011467	A27/ES							Nut, slotted, $\frac{1}{2}$ in. BSF	2	-	C	
28P/1046788	SP90/C8							Pin, split, $\frac{1}{16}$ in. dia.	2	-	C	
28W/9419505	SP15/E							Washer, $\frac{1}{2}$ in.	2	-	C	
28W/9419487	SP16/E							Washer, $\frac{1}{2}$ in.	2	-	C	
30626	EB8.73.1705							PIPE, $\frac{3}{16}$ in. o/d (camera doors open) adaptor - coupling (starboard)	1	-	C	MH.3
30627	EB8.73.1707							PIPE, $\frac{3}{16}$ in. o/d (camera doors shut) adaptor - coupling (starboard)	1	-	C	MH.3
27855	EB8.73.1713							PIPE, $\frac{3}{16}$ in. o/d (camera doors shut) connection starboard - tee-piece port (See pipe chart)	1	-	C	MH.3
27854	EB8.73.1715							PIPE, $\frac{3}{16}$ in. o/d (camera doors open) connection port - connection starboard (See pipe chart)	1	-	C	MH.3

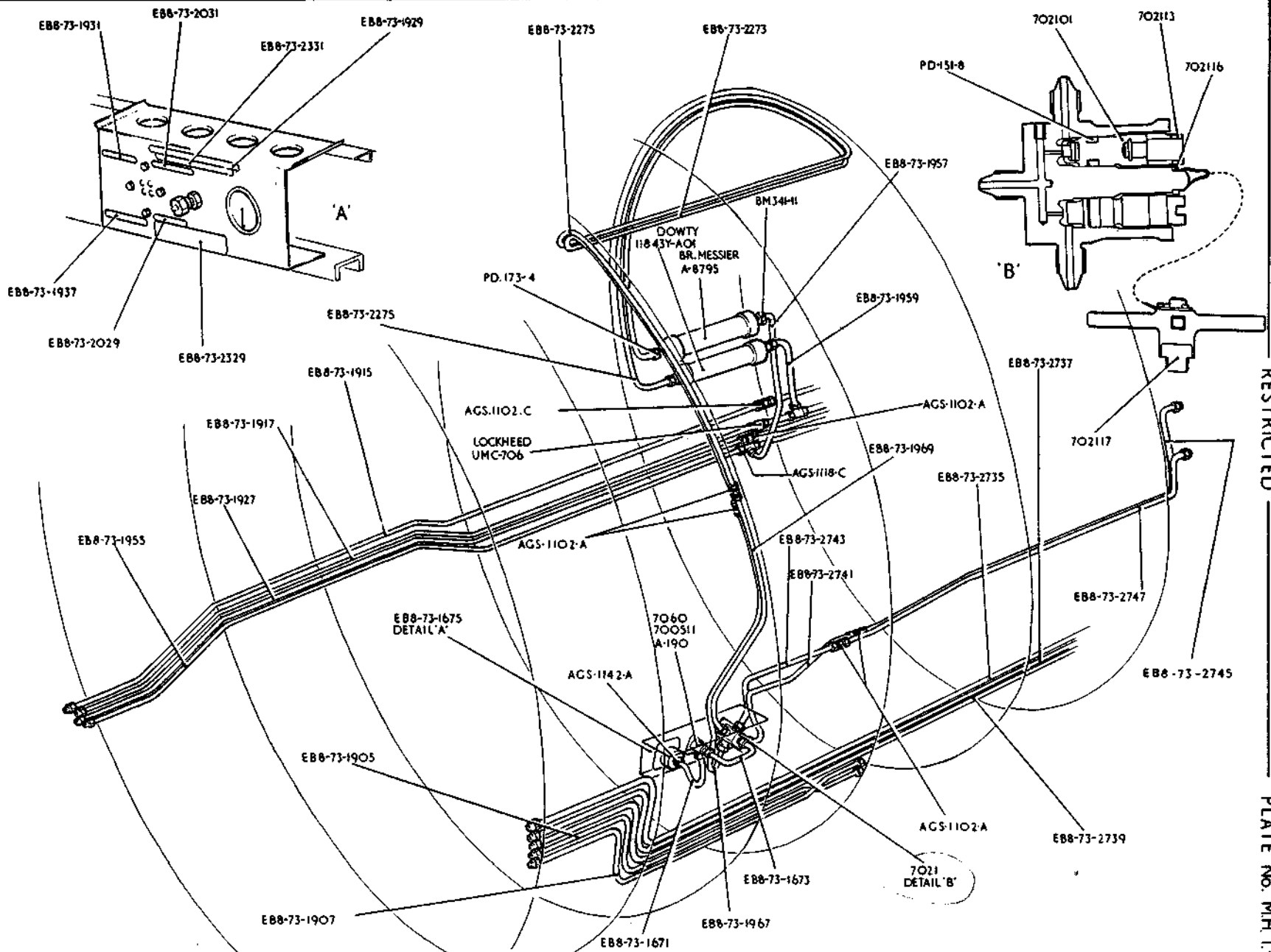
SERVICES
HYDRAULIC - REAR FUSELAGE

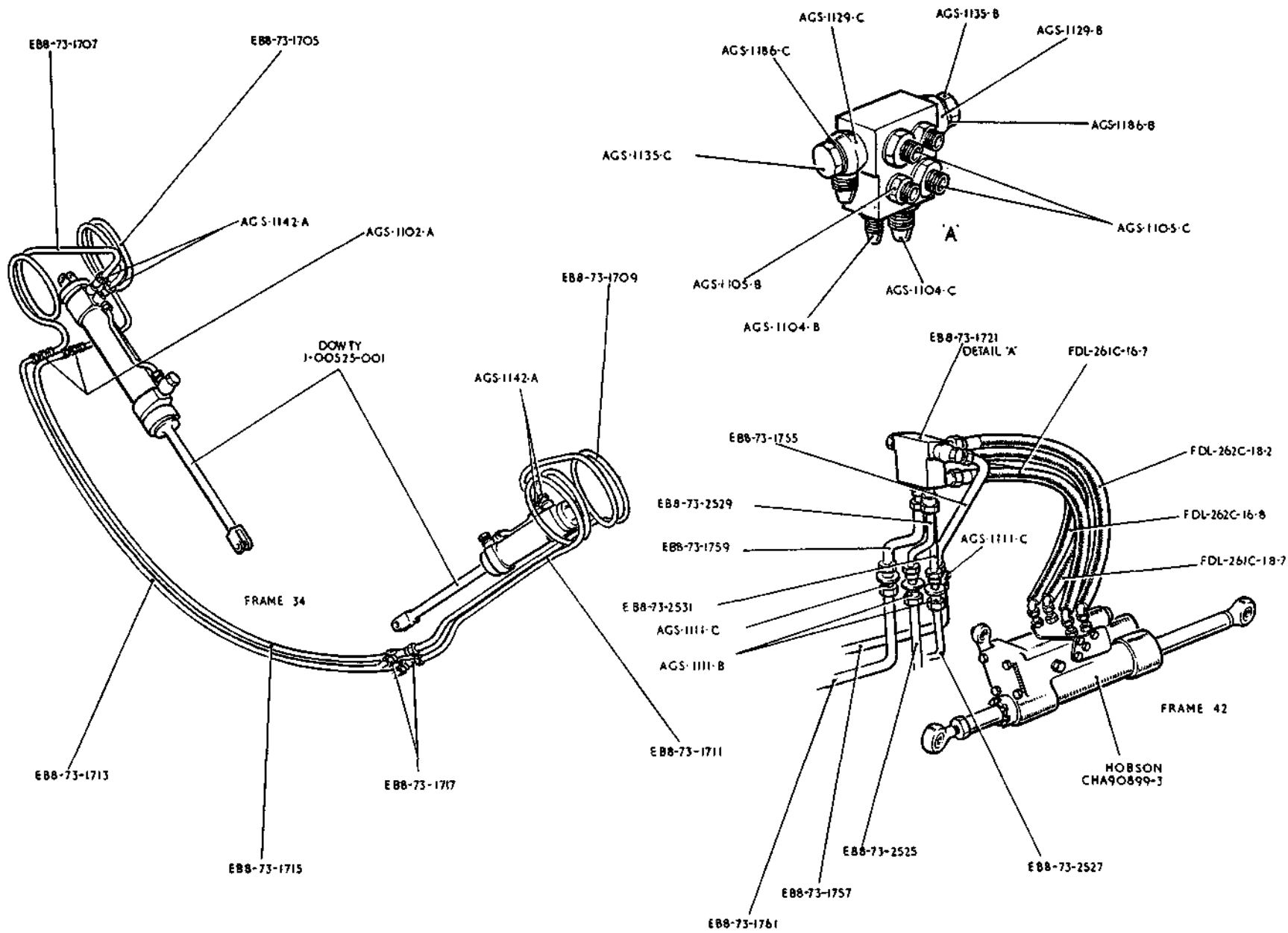
Ref. No	Part No.	Description						No. off	Material Specification	Class of Eqp. M.R. or L.M.	Plate No.
		1	2	3	4	5	6				
30628	EB8.73.1709					PIPE, $\frac{3}{8}$ in. o/d (camera doors open) adaptor - tee-piece port	1	-	C	MH.3	
30629	EB8.73.1711					PIPE, $\frac{3}{8}$ in. o/d (camera doors shut) adaptor - tee-piece port	1	-	C	MH.3	
	-					PIPING, Power Rudder Jack Assembly (EB8.73.349) Spares for:-	-	-	-		
30653	EB8.73.1721					BLOCK, Union Assembly Spares for:-	1	-	C	MH.3	
28F/8011809	AGS1104/B					ADAPTOR, cone, $\frac{1}{4}$ in. BSP	1	-	C	MH.3	
28F/9140971	AGS1104/C					ADAPTOR, cone, $\frac{3}{8}$ in. BSP	1	-	C	MH.3	
28F/9439102	AGS1105/B					ADAPTOR, union, $\frac{1}{4}$ in. BSP	2	-	C	MH.3	
28F/9439104	AGS1105/C					ADAPTOR, union, $\frac{3}{8}$ in. BSP	2	-	C	MH.3	
28F/9439533	AGS1129/B					BODY, banjo, $\frac{1}{4}$ in. BSP	1	-	C	MH.3	
28F/9140973	AGS1129/C					BODY, banjo, $\frac{3}{8}$ in. BSP	1	-	C	MH.3	
28F/9423227	AGS1135/B					BOLT, banjo, $\frac{1}{4}$ in. BSP	1	-	C	MH.3	
28F/9423229	AGS1135/C					BOLT, banjo, $\frac{3}{8}$ in. BSP	1	-	C	MH.3	
28F/9428453	AGS1186/B					WASHER, $\frac{3}{8}$ in. dia.	5	-	C	MH.3	
28F/9429532	AGS1186/C					WASHER, $\frac{3}{8}$ in. dia.	5	-	C	MH.3	
						Attachment of union block to structure					
28D/9453970	A25/15C					Bolt, 2BA	4	-	C		
28W/9419475	SP15/C					Washer, 2BA	4	-	C		
28F/1013402	AGS1111/B					COUPLING, union Attachment of coupling to fin stub rib	2	-	C	MH.3	
28D/1010658	A25/1B					Bolt, 4BA	6	-	C		
28M/1278189	AGS2001/B1					Nut, stiff, 4BA	6	-	C		
28F/9128928	AGS1115/2					Plate, washer	1	-	C		
28W/9419474	SP15/B					Washer, 4BA	6	-	C		
28F/1036557	AGS1111/C					COUPLING, union Attachment of coupling to fin stub rib	2	-	C	MH.3	
28D/9436920	A25/1C					Bolt, 2BA	6	-	C		
28M/1278190	AGS2001/C1					Nut, stiff, 2BA	6	-	C		
28F/9128929	AGS1115/4					Plate, washer	1	-	C		
28W/9419475	SP15/C					Washer, 2BA	6	-	C		
27VA/4626086	Dunlop 4/WLA/261/8/ 10/18.7					PIPE, flexible (rudder stand-by pressure) union block-jack	1	-	B	MH.3	
27VA/4626085	Dunlop 4/WLA/261/8/ 10/16.7					PIPE, flexible (controls return) union block-jack	1	-	B	MH.3	
27VA/4626091	Dunlop 6/WLA/261/8/ 10/18.2					PIPE, flexible (services return) union block-jack	1	-	B	MH.3	

RESTRICTED

SERVICES
HYDRAULIC - REAR FUSELAGE

Ref. No	Part No.	Description						No. off	Material Specification	Class of Eqt. M.R. or L.M.	Plate No.
		1	2	3	4	5	6				
27VA/4626090	Dunlop 6/W14/261/8/ 10/16.8	PIPE, flexible (services pressure) union block-jack						1	-	B	MH.3
27827	EB8.73.1749	PIPE, $\frac{1}{2}$ in. o/d (Pre Mod 3065)						1	-	C	
37175	EB8.73.2525	PIPE, $\frac{1}{2}$ in. o/d (Mod 3065)(Controls return) fin stub rib - connection forward frame 42						1	-	C	MH.3
27824	EB8.73.1753	PIPE, $\frac{1}{2}$ in. o/d (Pre Mod 3065)						1	-	C	
37176	EB8.73.2527	PIPE, $\frac{1}{2}$ in. o/d (Mod 3065)(rudder stand-by pressure) fin stub rib - connection forward frame 42						1	-	C	MH.3
27822	EB8.73.1757	PIPE, $\frac{3}{8}$ in. o/d (services return) fin stub rib - connection forward frame 42 (See pipe chart)						1	-	C	MH.3
27820	EB8.73.1761	PIPE, $\frac{3}{8}$ in. o/d (services pressure) bulkhead union - union block (See pipe chart)						1	-	C	MH.3
27826	EB8.73.1747	PIPE, $\frac{1}{2}$ in. o/d (Pre Mod 3065)						1	-	C	
37177	EB8.73.2529	PIPE, $\frac{1}{2}$ in. o/d (Mod 3065)(rudder stand-by pressure) bulkhead union - union block						1	-	C	MH.3
27825	EB8.73.1751	PIPE, $\frac{1}{2}$ in. o/d (Pre Mod 3065)						1	-	C	
37178	EB8.73.2531	PIPE, $\frac{1}{2}$ in. o/d (Mod 3065)(controls return) bulkhead union - union block						1	-	C	MH.3
27823	EB8.73.1755	PIPE, $\frac{3}{8}$ in. o/d (services return) bulkhead union - union block (See Pipe chart)						1	-	C	MH.3
27821	EB8.73.1759	PIPE, $\frac{3}{8}$ in. o/d (services pressure) bulkhead union - union block (See pipe chart)						1	-	C	MH.3
27KH/4628412	Lucas Aerospace CHA90899/3	UNIT, rudder type 101 Mk.3 (See section CA)						-	-	A	MH.3







This file was downloaded from the RTFM Library.

Link: www.scottbouch.com/rtfm

Please see site for usage terms, and more aircraft documents.

