

TANKS

FUEL

Ref. No	Part No.	Description						No. off	Material Specification	Class of Eqpt. M.R. or L.M.	Plate No.
		1	2	3	4	5	6				
13834	EB8.56.31	PLATE, filler neck aperture, group Attachment of aperture plate to filler neck housing						1	-	C	PA.6
28D/9133011	A25/2C	Bolt, 2BA						8	-	C	
16463	EA2.56.675	Seal, filler neck aperture						1	Neo-K-Tex	C	PA.6
1468	EBAS1/2C	Screw, 2BA						2	S11	C	PA.6
13835	EB8.56.29	PLUG, Filler Pipe, Group Spares for:-						1	-	B	PA.6
26453	EB8.56.59	BASE, filler pipe plug						1	L64	C	
28M/7000211	AGS120/A	NUT, wing, 1/4 in. BSF						1	-	C	
13836	EB8.56.61	RING, sealing						1	Neoprene	C	PA.6
28E/	Terry No.169-1/4 in.	RING, split key						2	-	C	PA.6
13837	EB8.56.27	RING, clamping Attachment of clamping ring to filler neck aperture plate						1	DTD610	C	PA.6
28D/9133012	A25/3C	Bolt, 2BA						4	-	C	
28D/1200119	A25/4C	Bolt, 2BA						2	-	C	
33559	EB8.56.155	Ring, sealing, rubber						1	Shore Hardness 30/40	C	PA.6
13839	EB8.56.33	Ring, stiffening						1	DTD610	C	PA.6
13309	EB8.56.5	TANK Fuel, No.6, Group (Supplied to Pt.No. EB8.00.446 for spares purposes) Spares for:-						1	-	A	PA.6
2570	EA2.56.401	ADAPTOR, pipe, group Attachment of pipe adaptor to flanged pipe						1	-	C	PA.2
28E/4710971	SP91/N	Clip, hose						2	-	C	
	EBAS77/142	Hose, (make from Ref.32C/376)						1	-	LM	
2614	EBAS66/16	Ring, clamping						2	DTD610	C	PA.2
26952	EB8.56.69	BRACKET, pipe mounting, group Attachment of pipe mounting bracket to tank and pipe						1	-	C	PA.2
28D/7002428	A25/6C	Bolt, 2BA						2	-	C	
28M/1278190	AGS2001/C1	Nut, stiff, 2BA						2	-	C	
28Q/9417267	AGS2050/424/BS	Rivet, 5/8 in. dia.						6	-	C	
28W/9419402	SP13/C	Washer						2	-	C	
4798	EA2.56.649	BLOCK, locating, adjustable Attachment of locating block to tank						4	DTD683	C	PA.3
28M/1278190	AGS2001/C1	Nut, stiff, 2BA						6	-	C	
3515	EBAS27/23/FU	Washer						6	DTD124	C	PA.3
27N/1027628	E587	BLOCK, terminal Attachment of terminal block to spacer						4	-	B	PA.3
28D/1215080	AS1246/7C	Bolt, 2BA						3	-	C	
28M/9433473	AGS2002/C1	Nut, stiff, 2BA						3	-	C	
13840	EB8.81.2467	CABLE, 1K1, group						1	-	C	PA.4
13841	EB8.81.2469	CABLE, 3K1, group						1	-	C	PA.4

TANKS

FUEL

Ref. No	Part No.	Description	No. off	Material Specification	Class of Eqt. M.R. or L.M.	Plate No.
5985	EA2.56.687	TANK, Fuel Nos. 1 and 2, Group	2	-	A	
5986	EA2.56.689	TANK, Fuel Nos. 3 and 4, Group	2	-	A	
	-	CAP, Filler, Nos. 1,2,3 and 4, Fuel Tank Assembly (EA3.57.435) (Not supplied with tanks) Spares for:-	1	-	-	
1140	EA1.57.133	ADAPTOR, filler cap drain	1	L1 or L40	C	PA.7
1141	AS2590	CAP, Filler, Group Spares for:-	1	-	B	PA.7
12876	AS2592	CAP, group	1	-	C	PA.7
2PT/9432438	AS5364	RING, sealing Attachment of filler cap to attachment ring and fuselage structure	1	-	C	PA.7
28W/9133011	A25/20	Bolt, 2BA	10	-	C	
28M/1278190	AGS2001/C1	Nut, stiff, 2BA GKN	10	-	C	
1142	EA1.57.131	Ring, sealing	1	Neo-K-Tex	C	PA.7
3141	EA2.56.71	Screw, 2BA	15	S11	C	PA.7
21783	AS3033	Washer, packing	1	-	C	PA.7
28W/9419404	SP16/C	Washer, 2BA	10	-	C	
	FEAS77/13	HOSE, rubber (make from Ref.320/407) Attachment of rubber hose to drain adaptor	1	-	LM	
28R/1222181	AGS3925/1	Clip, hose	1	-	C	
28R/10162	AGS 566/C	PLUG	1	-	C	
2172	EA1.57.125	RING, filler cap attachment Attachment of filler cap attachment ring to tank	1	DTD213	C	PA.7
3142	EA1.57.129	Ring, sealing	1	Neo-K-Tex	C	PA.7
28W/1278190	AGS2001/C1	Nut, stiff, 2BA GKN	16	-	C	
28W/9419404	SP16/C	Washer, 2BA	15	-	C	
28W/9149464	AGS164/A	WASHER, jointing	1	-	C	
28W/9130226	AGS164/F	WASHER, jointing	1	-	C	
13308	EB8.56.3	TANK, Fuel, No.5 Group (Spares supplied to EB8.00.675)	1	-	A	PA.7
	-	CAP, Filler, No.5 Fuel Tank Assembly (EA3.57.437) (Not supplied with tank) Spares for:-	1	-	-	
1140	EA1.57.133	ADAPTOR, filler cap drain	1	L1 or L40	C	PA.7

RESTRICTED

TANKS
FUEL

Ref. No	Part No.	Description						No. of	Material Specification	Class of Eqpt. M.R. or L.M.	Plate No.
		1	2	3	4	5	6				
1141	AS2590	CAP, Filler, Group						1	-	B	PA.7
		Spares for:-									
12876	AS2592	CAP, group						1	-	C	PA.7
28J/9432438	AS5364	RING, sealing						1	-	C	
		Attachment to filler cap to attachment ring and fuselage structure									
28D/9133011	A25/20	Bolt, 2BA						10	-	C	
28M/1278190	AGS2001/C1	Nut, stiff, 2AA, GKN						10	-	C	
1142	EA1.57.131	Ring, sealing						1	Neo-K-Tex	C	PA.7
3141	EA2.56.71	Screw, 2BA						15	S11	C	PA.7
21783	AS3033	Washer, packing						1	-	C	PA.7
28T/9419404	SP16/C	Washer, 2BA						10	-	C	
	RSAS77/13	HOSE, rubber (make from Ref.320/407)						1	-	LM	
		Attachment of rubber hose to drain adaptor									
28E/1222181	AGS 3925/1	Clip, hose						1	-	C	
28R/10162	AGS566/C	PIPE						1	-	C	
3180	EA1.57.127	RING, filler cap attachment						1	DTD213	C	PA.7
		Attachment of filler cap attachment ring to tank									
3142	EA1.57.129	Ring, sealing						1	Neo-K-Tex	C	PA.7
28M/1278190	AGS2001/C1	Nut, stiff, 2BA, GKN						10	-	C	
28W/9119404	SP16/C	Washer, 2BA						15	-	C	
28W/9119464	AGS164/A	WASHER, jointing						1	-	C	
28W/9130226	AGS164/F	WASHER, jointing						1	-	C	
	-	TANK, Fuel, No.6, Installation Assembly (EB8.56.1)						-	-	-	
		Spares for:-									
13829	EB8.56.21	ADAPTOR, screwed						1	S92	C	PA.6
		Attachment of screwed adaptor to stock pipe									
13830	EB8.56.19	Gasket, between adaptor and tank pipe						1	Neo-K-Tex	C	PA.6
28M/1278190	AGS2001/C1	Nut, stiff, 2BA, GKN						6	-	C	
28W/9419402	SP13/C	Washer, 2BA						6	-	C	
2563	EA2.56.397	FAIRING, No.6 Tank Group (Supplied to Pt.No. EA2.60.119 for spares purposes)						1	-	A	PA.6
		Spares for:-									
2564	EA2.56.389	HOUSING, Toggle Door, Group						4	-	C	PA.6
		Spares for:-									
	EA2.56.389D	CABLE, 3 cwt. 05 in. dia. x 4 in. long						3	-	C	PA.6
28FP/4062364	Dzus E4/35	FASTENER						1	-	C	
25996	EA1.50.163	PERCHILE						1	Brass	C	PA.6
28FP/9483371	Dzus GF4/150	GRONNET						1	-	C	

TANKS

FUEL

Ref. No	Part No.	Description						No. off	Material Specification	Class of Eqpt. M.R. or L.M.	Plate No.
		1	2	3	4	5	6				
13842	EB8.56.53	CAP, end, group Attachment of end cap to suppressor						4	-	C	PA.3
27N/180	Graviner E155	Plate, shorting						1	-	C	PA.3
27N/183	Graviner E204	Bolt, column						3	-	C	PA.3
28M/9433473	AGS2002/C1	Nut, stiff, 2BA						3	-	C	
28W/9410454	SP10/C	Washer, 2BA						3	-	C	
	-	CARTRIDGE, Inhibitor, Assembly (EA2.56.481) Spares for:-						1	-	-	
2577	EA2.56.487	GASKET						2	Neo-K-Tex	C	PA.2
2578	EA2.56.485	INHIBITOR						2	-	C	PA.2
2579	EA2.56.491	PLATE, cover						2	DTD610	C	PA.2
2580	EA2.56.563	RING, nut						2	DTD610	C	PA.2
22959	EBAS/152/C	WASHER, sealing						16	-	C	
27N/184	Graviner E228	CONDUCTOR, dummy						4	-	C	PA.3
29897	EB8.81.2243	CONNECTOR, E.S1						1	-	B	
31060	EB8.81.2245	CONNECTOR, E.S2 group						1	-	C	PA.3
31061	EB8.81.2247	CONNECTOR, E.S3 group						4	-	C	PA.3
31062	EB8.81.2249	CONNECTOR, E.S4 group						3	-	C	PA.3
31063	EB8.81.2251	CONNECTOR, E.S5 group						3	-	C	PA.3
6A/2851	Smiths CA/40	CONNECTOR, uniradio						2	-	B	PA.3
6A/2853	Smiths CA/55	CONNECTOR, uniradio						1	-	B	PA.3
6A/2995	Smiths CA/80	CONNECTOR, uniradio						1	-	B	PA.3
6A/5372	Smiths LF/16	CONNECTOR Attachment of connector to mounting panel						8	-	B	PA.3
27N/166	Graviner E521	Washer, lock						1	-	C	PA.3
2584	EA2.56.371	CONNECTION, venting and purging, group Attachment of venting and purging connection to tank						4	-	C	PA.6
28D/9133012	A25/3C	Bolt, 2BA						6	-	C	
2590	EA2.56.311	Gasket						1	Neo-K-Tex	C	PA.6
2612	EA2.56.145	Ring, stiffener, group						1	-	C	PA.6
28F/9429636	AGS1186/3	Washer, sealing						6	-	C	
27FS/2226	Saunders 42A/10	COCK, fuel, type 42						2	-	A	PA.2

RESTRICTED

TANKS

FUEL

Ref. No	Part No.	Description	No. off	Material Specification	Class of Eqt. M.F. or L.M.	Plate No.
13843	EB8.56.47	CUP, fixing Attachment of fixing cup to mounting bracket	4	Hycatrol	C	PA.3
28D/9709461	AS1242/3C	Bolt, 2BA	3	-	C	
13853	EB8.56.49	Washer, clamping	3	DTD610	C	PA.3
12G/1430	Graviner No.116, Mk.1	DETONATOR	12	-	C	PA.3
13844	EB8.56.111	DRAIN, line, tank pumps, group Attachment of line drain to tank	1	-	C	PA.4
28D/1007285	AS1242/1B	Bolt, 4BA	4	-	C	
28M/1278189	AGS2001/B1	Nut, stiff, 4BA	4	-	C	
28W/9419474	SP15/B	Washer	4	-	C	
2621	FEAS104	DRAIN, water	3	-	B	PA.1
13846	EB8.56.43	GASKET, access door	4	Neo-K-Tex	C	
27FS/2241	Saunders A102/3	HANDLE, fuel cock	2	-	C	PA.2
28F/9513420	AGS1182/J	NIPPLE, adaptor	8	-	C	
2585	EA2.56.143	PANEL, access, forward end, group Attachment of access panel to tanks				
28D/9133012	A25/3C	Bolt, 2BA	34	-	C	
2588	EA2.56.151	Gasket	1	Neo-K-Tex	C	PA.4
28F/9429636	AGS1186/3	Washer, sealing	34	-	C	
2599	EA2.56.183	PANEL, access, forward, group Attachment of access panel to tank	1	-	C	PA.4
28D/1200119	A25/4C	Bolt, 2BA	59	-	C	
2589	EA2.56.181	Gasket	1	Neo-K-Tex	C	PA.4
28F/9429636	AGS1186/3	Washer, sealing	59	-	C	
2603	EA2.56.157	PANEL, access, top skin Attachment of access panel to top skin	6	DTD610	C	PA.4
28D/9133012	A25/3C	Bolt, 2BA	34	-	C	
2580	EA2.56.147	Gasket	1	Neo-K-Tex	C	PA.4
28F/9429636	AGS1186/3	Washer, sealing	34	-	C	
13848	EB8.56.101	PANEL, access, aft end Attachment of access panel to tank	1	DTD610	C	PA.4
28D/1200119	A25/4C	Bolt, 2BA	59	-	C	
2589	EA2.56.181	Gasket	1	Neo-K-Tex	C	PA.4
28F/9429636	AGS1186/3	Washer, sealing	59	-	C	
2608	EA2.56.387	PIPE, flanged, tank inlet, group Attachment of flanged pipe to tank	1	-	C	PA.2
2592	EA2.56.363	Gasket, sealing ring	1	Neo-K-Tex	C	PA.2
28M/1278190	AGS2001/C1	Nut, stiff, 2BA	8	-	C	
2613	EA2.56.361	Ring, stiffener, group	1	-	C	
28F/9429636	AGS1186/3	Washer, sealing	8	-	C	

TANKS

FUEL

Ref. No	Part No.	Description						No. off	Material Specification	Class of Eqp. M.R. or L.M.	Plate No.
		1	2	3	4	5	6				
2600	EA2.56.375	PIPE, suction, drain, group						1	-	C	PA.5
28D/9133012	A25/3C	Attachment of drain pipe to tank						6	-	C	
2582	EA2.56.381	Bolt, 2BA						2	D7D610	C	PA.5
28M/1278190	AGS2001/C1	Clip, drain pipe						8	-	C	
28F/9429636	AGS1186/3	Nut, stiff, 2BA						3	-	C	
13850	EB8.56.66	Washer, sealing						2	-	C	PA.2
13851	EB8.56.105	PIPE, group, fuel cock to fuel pipe connection						1	-	C	PA.2
13852	EB8.56.107	PIPE, group, between fuel pump and fuel cock, port						1	-	C	PA.4
2611	EA2.56.135	PIPE, group, between fuel pump and fuel cock, starboard						4	-	C	PA.3
28D/9133012	A25/3C	PLATE, fuel gauge cover, group						30	-	C	
2587	EA2.56.149	Attachment of cover plate to tank						1	Neo-K-Tex	C	PA.3
28F/9429636	AGS1186/3	Bolt, 2BA						30	-	C	
50E/4676311	S.P.E. 13580	Gasket, cover plate seating						2	-		PA.4
50E/4395810	S.P.E. 1201. Mk.4	Washer, sealing						2	-	A	PA.4
28D/1200119	A25/4C	PLUG, blanking drain (Mod 3114)						26	-	C	
13845	EB8.56.103	PUMP, fuel booster						1	Neo-K-Tex	C	PA.4
28M/1278190	AGS2001/C1	Attachment of fuel booster pump to tank						26	-	C	
28F/9429636	AGS1186/3	Bolt, 2BA						26	-	C	
34097	EB8.56.35	Gasket, fuel booster pump seating						26	-	C	
27N/4526521	Graviner E556	Nut, stiff, 2BA						-	-		
27N/4526505	Graviner E165	Washer, sealing						1	-	C	PA.6
27N/1036730	Graviner E403	SKIN, sheeting (EB8.56.7)						4	-	C	PA.3
28D/9133011	A25/2C	PIPE, stack						4	-	C	PA.3
13847	EB8.56.45	SUPPRESSOR						3	-	C	
28M/1278190	AGS2001/C1	Attachment of spacer to mounting panel						1	Neo-K-Tex	C	PA.3
28F/9429636	AGS1186/3	Bolt, 2BA						3	-	C	
28M/9419475	SP15/C Smiths	Gasket, spacer seating						3	-	C	
6A/4333138	TAA/1/77 Smiths	Nut, stiff, 2BA						3	-	C	
6A/4333139	TAA/2/78	Washer, sealing						3	-	C	
28D/1200119	A25/4C	Washer, 2BA						1	-	A	PA.3
2591	EA2.56.313	UNIT, fuel, gauge						3	-	A	PA.3
		Attachment of fuel gauge unit to tank						12	-	C	
		Bolt, 2BA						1	Neo-K-Tex	C	PA.3
		Gasket, fuel gauge unit seating									

RESTRICTED

TANKS
FUEL

Ref. No	Part No.	Description						No. off	Material Specification	Class of Eqpt. M.R. or L.M.	Plate No.
		1	2	3	4	5	6				
28F/1010341	AGS1106/B							2	-	C	
28F/4051659	AGS1109/J							2	-	C	
2620	EA2.56.503							4	-	B	PA.1
28D/1200119	A25/4C							4	-	C	
2596	EA2.56.515							1	Non-K-Tex	C	PA.1
28M/1278190	AGS2001/C1							4	-	C	
28F/9429636	AGS1186/3							4	-	C	
2617	EA2.56.367							4	-	C	PA.5
28Y/1036648	AS2573							1	-	C	
28Y/4695008	AS2588							1	-	C	
28Y/7132092	AS403							1	-	C	
28Y/4687680	AS2578							1	-	C	
28Y/1013017	AS404							1	-	C	
28Y/13381	AS2579							1	-	C	
28Y/4672701	AS2576							1	-	C	
28W/4674231	AS410							1	-	C	
28D/9436920	A25/1C							7	-	C	
28D/9133011	A25/2C							1	-	C	
28W/9416643	SP47/C							8	-	C	
2622	EA2.56.87							4	S65	W	PA.6
30845	EB8.00.551							1	-	A	PA.8
36599	EB6.20.1165							1	L44	C	PA.9
21016	EA1.20.5067							1	DTD560	C	PA.9
21017	EA1.20.5068							1	DTD560	C	PA.9
21018	EA1.20.5069							1	DTD560	C	PA.9
21019	EA1.20.5070							1	DTD560	C	PA.9
3523	EEAS134/1½C							525	S27	C	PA.9
	Smiths										
6A/4333192	JKB/1							2	-	B	PA.9
28D/1200119	A25/4C							8	-	C	
28F/9429636	AGS1186/3							8	-	C	
36597	EB6.20.1167							1	-	C	PA.9

FUEL

Ref. No	Part No.	Description						No. off	Material Specification	Class of Eqpt. M.R. of L.M.	Plate No.
		1	2	3	4	5	6				
6928	EAL.20.4423	PANEL, Fuel Pump Access, Group						1	-	B	PA.11
5511	EAL.20.10987	VALVE, Drain, Group						1	-	B	PA.11
21522	EAL.20.10901	PLUG, Valve, Group						1	-	C	PA.11
5512	EAL.20.10907	PLUG						1	DTD683	C	PA.11
12335	EAL.20.10905	RING, resilient						1	Hycatrol	C	PA.11
		Attachment of drain valve to access panel									
	J.Stone & Co.	Rivet, domed head, $\frac{5}{32}$ in. dia.						17	-		
3458	YG25313/506	Washer, siding						1	Neo-K-Tex	C,	PA.11
		Attachment of access panel to tank									
6218	KEAS1/1 $\frac{1}{2}$ "	Screw, $\frac{1}{4}$ in. BSF						44	-	C	PA.11
6926	EB6.20.279	Seal, pump access panel						1	-	C	PA.11
16028	EAL.20.4801	PANEL, access, rear wall						1	-	B	PA.8
16106	EAL.20.5311	PANEL, access, rear wall						1	-	B	PA.8
16107	EAL.20.5313	PANEL, access, rear wall						2	-	B	PA.8
21040	EAL.20.4927	SEAL						4	DTD560	C	
	Pulsometer	PUMP, Fuel (Pre-Mod.2611)						1	-	A	
5UE/6236	PUL.907.Mk.2	PUMP, Fuel (Mod.2611) (Pt.2) (not supplied with Spare Tank Ref.No.30845)						1	-	A	PA.10
5UE/4412539	PUL.907.Mk.4A	Attachment of fuel pump to tank									
28D/7002428	A25/6C	Bolt, 2BA						14	-	C	
6930	EAL.20.5265	Ring, nut						1	-	C	PA.10
6925	EA6.20.251	Seal						1	Petrolite	C	PA.10
28F/9429636	AGS1186/3	Washer, sealing						14	-	C	
28W/9419475	SP15/C	Washer						14	-	C	
34723	EAL.20.5195	RING, packing						2	DTL18	C	
15973	EAL.20.4153	SEAL						1	Petrolite	C	PA.9
21040	EAL.20.4927	SEAL						4	-	C	
-	-	STRUCTURE, Main Integral Tank Assembly (EB8.20.5213)						-	-	-	
		Spares for:-									
16480	EB7.57.139	CAP, Filler, Group						2	-	B	PA.10
		Spares for:-									
1141	AS2590	CAP, Filler, Group						1	-	B	PA.7
		Spares for:-									
12876	AS2592	CAP						1	-	C	PA.7
28J/9432438	AS5364	RING, sealing						1	-	C	
	Terry	RING, split key						1	-	C	PA.10
28R/9467497	No.169- $\frac{1}{4}$ in.	Attachment of filler cap to tank									
16044	EAL.20.4869	Bolt						5	-	C	PA.10
28D/9436920	A25/1C	Bolt, 2BA						1	-	C	
28M/9433473	AGS2002/C1	Nut, thin, 2BA						1	-	C	
16042	EAL.20.4831	Seal, filler, cap seating						1	Neo-K-Tex	C	PA.10
1025	KEAS1/1C	Screw, 2BA						10	896	C	PA.10

RESTRICTED

TANKS

FUEL

Ref. No	Part No.	Description						No. off	Material Specification	Class of Eqpt. M.R. or L.M.	Plate No.
		1	2	3	4	5	6				
16075	EA1.20.5103										
6927	EA1.20.5099										
39491	EB6.20.827										
25796	EB6.20.839										
1028	ERAS1/3C										
1034	ERAS1/3E										
25801	EB6.20.847										
1028	ERAS1/3C										
1034	ERAS1/3E										
25805	EB6.20.915										
1028	ERAS1/3C										
1034	ERAS1/3E										
25809	EB6.20.927										
1028	ERAS1/3C										
1034	ERAS1/3E										
30997	EB6.20.1153										
28W/9433473	AGS2002/C1										
30995	EB6.20.1155										
30996	EB6.20.1157										
30998	EB6.20.1159										
28W/9419402	SP13/C										

Canberra P.R. Mk.9		TANKS					Page PA.11				
		FUEL									
Ref. No	Part No.	Description						No. off	Material Specification	Class of Eqpt. M.R. or L.M.	Plate No.
		1	2	3	4	5	6				
12016	EAL.57.663	VALVE, Vent, Group						2	-	B	PA.8
		Spares for:-									
21938	EAL.57.887	COVER, valve						1	DTD610	C	PA.11
28S/9435716	A33/B12	Attachment of cover to valve									
		Screw, 4BA						7	-	C	
13159	EAL.57.523	VALVE, Vent, Sub-Assembly (Pre Mod.2721)						1	-	B	
32663	EB6.57.141	VALVE, Vent, Sub-Assembly (Mod. 2721)						1	-	B	PA.11
		Consisting of:-									
21766	EAL.57.893	GASKET, (Pre Mod.2721)						1	Hycar	C	
37822	EB6.57.137	GASKET, (Mod.2721)						1	-	C	PA.11
21771	EAL.57.1097	GASKET, (Pre Mod.2721)						1	Hycar	C	
32664	EB6.57.133	GASKET, (Mod.2721)						1	-	C	PA.11
21765	EAL.57.889	GUIDE, plug						1	LFS21	C	PA.11
26681	EAL.57.881	HEAD, valve						1	DTD276	C	PA.11
21772	EAL.57.1191	HEATER, vent valve						1	-	C	PA.11
25881	EAL.57.877	HOUSING, element, bottom						1	L51	C	PA.11
27191	EAL.57.879	HOUSING, element, top						1	L51	C	PA.11
28M/1278190	AGS2001/C1	NUT, stiff, 2BA						1	-	C	
28P/19227	SP90/C6	PIN, split, $\frac{1}{8}$ in. dia.						1	-	C	
27569	EAL.57.903	PLATE, retaining						1	DTD610	C	PA.11
25878	EAL.57.907	PLATE, spring retaining						1	DTD124	C	PA.11
21768	EAL.57.897	PLUG						2	BSS249	C	PA.11
21770	EAL.57.905	RING, valve						1	Hycar	C	PA.11
28S/9435716	A33/B12	SCREW, 4BA						2	-	C	
28S/1202639	A33/C8	SCREW, 2BA						3	-	C	
25879	EAL.57.1103	SPRING						1	DTD215	C	PA.11
6922	EB6.57.81	SPRING						1	DTD215	C	PA.11
26682	EAL.57.1099	STEM, valve						1	DTD525	C	PA.11
21769	EAL.57.901	WASHER, valve						1	Hycar	C	PA.11
		Attachment of vent valve sub-assembly to vent valve group									
37865	EAL.57.1337	Bolt						6	-	C	PA.11
21764	EAL.57.885	Gasket (Pre Mod.2720)						1	Hycar	C	
37821	EB6.57.135	Gasket (Mod.2720)						1	-	C	PA.11
21767	EAL.57.895	Ring, joint (Pre Mod.2720)						1	Hycar	C	
37820	EB6.57.131	Ring, joint (Mod.2720)						1	-	C	PA.11
21173	EAL.57.1321	WASHER, sealing						1	Hycar	C	PA.11
		Attachment of vent valve to tank									
16043	EAL.20.4833	Seal, vent valve						1	Neo-K-Tex	C	PA.11
1025	BEAS1/1C	Screw, 2BA						16	S96	C	PA.11
28445	EAL.20.4533	VALVE, Non-return, Group						1	-	C	PA.11
		Spares for:-									
30999	EB6.20.1151	BOLT, 2BA (Mod.2572)						1	-	C	PA.11
27173	EAL.20.5119	WASHER						1	Petrolite	C	PA.11

TANKS

FUEL

Ref. No	Part No.	Description						No. off	Material Specification	Class of Eqp't. M.R. or L.M.	Plate No.
		1	2	3	4	5	6				
28D/9133011	A25/2C	Attachment of non-return valve to rib 2						8	-	C	
28W/9433473	AGS2002/C1	Bolt, 2BA						8	-	C	
28W/9419475	SP15/C	Nut, thin, 2BA						6	-	C	
28444	EB6.20.795	Washer						1	-	C	PA.11
27173	EAL.20.5119	VALVE, Non-Return, Group Spares for:- WASHER						1	Petrolite	C	PA.11
28D/9133012	A25/3C	Attachment of non-return valve to rib 2						6	-	C	
28D/9140203	AS1246/3C	Bolt, 2BA						2	-	C	
28W/9433473	AGS2002/C1	Nut, thin, 2BA						8	-	C	
28W/9419475	SP15/C	Washer						2	-	C	
28W/9419404	SP16/C	Washer						6	-	C	
30846	EB8.00.552	TANK, Integral, Starboard Wing, Group Spares for:-						1	-	A	PA.8
36599	EB6.20.1165	ADAPTOR, drain (Mod.2587)						1	L44	C	PA.9
21016	EAL.20.5067	BLOCK, rubber, inboard						1	DTD560	C	PA.9
21017	EAL.20.5068	BLOCK, rubber, inboard						1	DTD560	C	PA.9
21018	EAL.20.5069	BLOCK, rubber, outboard						1	DTD560	C	PA.9
21019	EAL.20.5070	BLOCK, rubber, outboard						1	DTD560	C	PA.9
3523	EEAS134/1½C Smiths	BOLT, 2BA						525	S27	C	PA.9
6A/3020	JXB/1	BOX, tank terminal						2	-	B	PA.9
28D/1200119	A25/4C	Attachment of terminal box to tank						8	-	C	
28F/9429636	AGS1186/3	Bolt, 2BA						8	-	C	
36598	EB6.20.1168	Washer, sealing						1	-	C	PA.9
6929	EAL.20.4424	CUP, fuel drain suction (Mod,2587)						1	-	C	PA.11
5511	EAL.20.10897	PANEL, Fuel Pump Access, Group Spares for:-						1	-	B	PA.11
21522	EAL.20.10901	VALVE, Drain, Group Spares for:-						1	-	B	PA.11
5512	EAL.20.10907	PLUG, Valve, Group Spares for:-						1	-	C	PA.11
12335	EAL.20.10905	PLUG						1	DTD683	C	PA.11
3458	J.Stone & Co. XG25313/506 EAL.20.2903	RING, resilient						1	Hycatrol	C	PA.11
6218	EEAS1/1½E	Attachment of drain valve to access panel						17	-	-	
6926	EB6.20.279	Rivet, domed head, 5/16 in. dia.						1	Neo-K-Tex	C	PA.11
		Washer, sealing						44	-	C	PA.11
		Attachment of access panel to skin						1	-	C	PA.11
		Screw, 1/4 in. BSF									
		Seal pump access panel									

TANKS
FUEL

Ref. No	Part No.	Description	No. off	Material Specification	Class of Eqpt. M.R. or L.M.	Plate No.
16028	EA1.20.4801	PANEL, access, rear wall	1	-	B	PA.8
16106	EA1.20.5311	PANEL, access, rear wall	1	-	B	PA.8
16107	EA1.20.5313	PANEL, access, rear wall	2	-	B	PA.8
21040	EA1.20.4927	SEAL	4	DTD560	C	
5UR/6236	Pulsometer FUL,907,Mk.2	PUMP, Fuel (Pre Mod.2611)	1	-	A	
5UR/4412539	FUL,907,Mk.4A	PUMP, Fuel (Mod.2611) (Not supplied with spare tank Ref.No.30846)	1	-	A	PA.10
28D/7002428	A25/6C	Attachment of fuel pump to tank	14	-	C	
6930	EA1.20.5265	Bolt, 2BA	1	-	C	PA.10
6925	EA6.20.251	Ring, nut	1	Petrolite	C	PA.10
28F/9429636	AGS1186/3	Seal	14	-	C	
28W/9419475	SP15/C	Washer, sealing	14	-	C	
34723	EA1.20.5195	Washer	14	-	C	
15973	EA1.20.4153	RING, Packing	2	DTD118	C	
-	-	SEAL	1	Petrolite	C	PA.9
-	-	STRUCTURE, Main Integral Tank Assembly (KB8.20.5214)	-	-	-	
16480	KB7.57.139	Spares for:- CAP, filler, Group	2	-	B	PA;10
1141	AS2590	Spares for:- CAP, Filler, Group	1	-	B	PA.7
12876	AS2592	Spares for:- CAP	1	-	C	PA.7
28J/9432438	AS5364	RING, sealing	1	-	C	
28E/9467497	Terry No.169- $\frac{1}{2}$ in.	RING, split key	1	-	C	PA.10
16044	EA1.20.4869	Attachment of filler cap to tank	5	-	C	PA.10
28D/9436920	A25/1C	Bolt	1	-	C	
28W/9433473	AGS2002/C1	Bolt, 2BA	1	-	C	
16042	EA1.20.4831	Nut, thin, 2BA	1	-	C	
1025	EA81/1C	Seal, filler cap, seating	1	Neo-K-Tex	C	PA.10
16075	EA1.20.5103	Screw, 2BA	10	S96	C	PA.10
6927	EA1.20.5099	PLUG, screwed, slinging point blanking	3	-	C	PA.8
39492	EB6.20.828	SEAL	3	Neo-K-Tex	C	PA.8
25797	EB6.20.840	SKIN, Leading Edge, Integral Tank, Bay 2, Assembly	1	-	C	
1028	KEAS1/3C	Spares for:- COVER, access, fuel contents unit, group	1	-	C	PA.8
1034	KEAS1/3E	Attachment of access cover to leading edge skin, bay 2	13	S96	C	PA.8
		Screw, 2BA	12	S96	C	PA.8
		Screw, $\frac{1}{2}$ in. BSP				

RESTRICTED

TANKS

FUEL

Ref. No	Part No.	Description						No. off	Material Specification	Class of Eqt. M.R. or L.M.	Plate No.
		1	2	3	4	5	6				
	-										
25802	EB6.20.848										
1028	EEAS1/3C										
1034	EEAS1/3E										
	-										
25806	EB6.20.916										
1028	EEAS1/3C										
1034	EEAS1/3E										
	-										
25810	EB6.20.928										
1028	EEAS1/3C										
1034	EEAS1/3E										
30997	EB6.20.1153										
28M/9433473	AGS2002/C1										
30995	EB6.20.1155										
30996	EB6.20.1157										
30998	EB6.20.1159										
28W/9419402	SP13/C										
12017	EA1.57.664										
21938	EA1.57.887										
28S/9435716	A33/B12										
13159	EA3.57.523										
32663	EB6.57.141										
21766	EA1.57.893										
37822	EB6.57.137										
21771	EA1.57.1097										
32664	EB6.57.133										
21765	EA1.57.889										
26681	EA1.57.881										

TANKS
FUEL

Ref. No	Part No.	Description						No. off	Material Specification	Class of Eqpt. M.R. or L.M.	Plate No.
		1	2	3	4	5	6				
21772	EA1.57.1191							1	-	C	PA.11
25881	EA1.57.877							1	L51	C	PA.11
27191	EA1.57.879							1	L51	C	PA.11
28M/1278190	AGS2001/C1							1	-	C	
28P/19227	SP90/06							1	-	C	
27569	EA1.57.903							1	DTD610	C	PA.11
25878	EA1.57.907							1	DTD124	C	PA.11
21768	EA1.57.897							2	BSS249	C	PA.11
21770	EA1.57.905							1	Hycar	C	PA.11
28S/9435716	A33/B12							2	-	C	
28S/1202639	A33/C8							3	-	C	

TANKS
FUEL

Ref. No	Part No.	Description						No. off	Material Specification	Class of Eqt. M.R. or L.M.	Plate No.
		1	2	3	4	5	6				

TANKS

FUEL

Ref. No	Part No.	Description						No. off	Material Specification	Class of Eqpt. M.R. or L.M.	Plate No.
		1	2	3	4	5	6				
25879	EA1.57.1103					SPRING	1	DTD215	C	PA.11	
6922	EB6.57.81					SPRING	1	DTD215	C	PA.11	
26682	EA1.57.1099					STEM, valve	1	DTD525	C	PA.11	
21769	EA1.57.901					WASHER, valve	1	Hycar	C	PA.11	
						Attachment of vent valve sub-assembly to vent valve group					
37865	EA1.57.1337					Bolt:	6	-	C	PA.11	
21764	EA1.57.885					Gasket (Pre Mod 2720)	1	Hycar	C		
37821	EB6.57.135					Gasket (Mod 2720)	1	-	C	PA.11	
21767	EA1.57.895					Ring, joint (Pre Mod 2720)	1	Hycar	C		
37820	EB6.57.131					Ring, joint (Mod 2720)	1	-	C	PA.11	
21173	EA1.57.1321					WASHER, valve	1	Hycar	C	PA.11	
						Attachment of vent valve to tank					
16043	EA1.20.4833					Seal, vent valve	1	Neo-K-Tex	C	PA.11	
1025	EFAS1/1C					Screw, 2BA	16	S96	C	PA.11	
28445	EA1.20.4533					VALVE, Non-return, Group	1	-	B	PA.11	
						Spares for:-					
30999	EB6.20.1151					BOLT, 2BA (Mod 2572)	1	-	C	PA.11	
27173	EA1.20.5119					WASHER	1	Petrolite	C	PA.11	
						Attachment of non-return valve to rib 2					
28D/9133011	A25/2C					Bolt, 2BA	8	-	C		
28W/9433473	AGS2002/C1					Nut, thin, 2BA	8	-	C		
28W/9419475	SP15/C					Washer	6	-	C		
28444	EB6.20.795					VALVE, Non-Return, Group	1	-	C	PA.11	
						Spares for:-					
27173	EA1.20.5119					WASHER	1	Petrolite	C	PA.11	
						Attachment of non-return valve to rib 2					
28D/9133012	A25/3C					Bolt, 2BA	6	-	C		
28D/9140203	AS1246/3C					Bolt, 2BA	2	-	C		
28W/9433473	AGS2002/C1					Nut, thin, 2BA	8	-	C		
28W/9419475	SP15/C					Washer	2	-	C		
28W/9419404	SP16/C					Washer	6	-	C		

RESTRICTED

TANKS
FUEL

Ref. No	Part No.	Description	No. off	Material Specification	Class of Eqp. M.R. or L.M.	Plate No.
30794	EB8.00.517	TANK, JETTISONABLE, WING TIP, o/w Fairing Port Group	1	-	A	PA.12
30795	EB8.00.518	TANK, JETTISONABLE, WING TIP, o/w Fairing Starboard Group	1	-	A	PA.12
30885	EB8.20.5359	Spares for:- BLOCK, aft inboard explosive bolt	1	L65	C	PA.12
30886	EB8.20.5361	BLOCK, aft outboard explosive bolt	1	L65	C	PA.12
30887	EB8.20.5363	BLOCK, forward port explosive bolt	1	L65	C	PA.12
30888	EB8.20.5364	BLOCK, forward starboard explosive bolt	1	L65	C	PA.12
28D/1011030	A25/2E	Attachment of explosive bolt blocks to fairing Bolt, $\frac{1}{2}$ in. BSF	26	-	C	
28M/9480017	AGS2001/E1	Nut, stiff, $\frac{1}{2}$ in. BSF	26	-	C	
28W/9419405	SF15/E	Washer, $\frac{1}{2}$ in.	26	-	C	
30889	EB8.20.5365	BLOCK, compression Attachment of compression block to fairing	1	L65	C	PA.12
28Q/9710513	SP80/506	Rivet, $5/32$ in. dia.	12	-	C	
30890	EB8.20.5367	BLOCK, bearing	2	L64	C	PA.12
30891	EB8.20.5369	BLOCK, bearing Attachment of bearing block to fairing	1	L64	C	PA.12
28D/1214091	AS1242/2C	Bolt, 2BA	2	-	C	
30895	EB8.62.145	Plate, locking	1	L72	C	
30892	EB8.62.121	BOLT, explosive, forward	1	-	C	PA.12
30893	EB8.62.123	BOLT, explosive, aft inboard	1	-	C	PA.12
30894	EB8.62.125	BOLT, explosive, aft outboard	1	-	C	PA.12
42438	EB8.20.5405/A	GENERATOR, Vortex	AR		C	
42437	EB8.20.5405/B	GENERATOR, Vortex	AR		C	
	-	SEAL, between tank fairing and wing skin (make from Ref.4432)	QR	-	LM	
30898	EB8.62.139	SHIM	2	Lam. Alum.	C	PA.12
30899	EB8.62.177	SHIM	1	Lam. Alum.	C	PA.12
	-	TANK DROP (Less Attachments) Port Assembly (EA3.62.175)	1	-	-	
	-	TANK DROP, (Less Attachments) Starboard Assembly (EA3.62.176)	1	-	-	
5CZ/4300	EA3.62.113	Spares for:- BLOCK, contact, navigation light Attachment of contact block to tank cover	1	-	B	PA.12
28S/9435715	A33/B16	Screw, 2BA	2	-	C	
20505	EA3.62.151	BODY, filler cap Attachment of filler cap body to filler cap ring	1	L45	C	PA.13
28D/1215515	AS4563/1C	Bolt, 2BA	18	-	C	
5250	EA2.62.71	Washer, jointing	18	Petrolite	C	PA.13

TANKS
FUEL

Ref. No	Part No.	Description						No. off	Material Specification	Class of Eqpt. M.R. or L.M.	Plate No.
		1	2	3	4	5	6				
12940	EA3.62.191							1	-	C	PA.13
13158	EA3.62.197							1	Hycatrol	C	PA.13
5249	EA2.62.143							1	-	C	PA.13
	-							1	-	-	
	-							1	-	-	
2136	EA2.62.227							1	-	C	PA.12
2137	EA2.62.229							1	-	C	PA.12
28E/9429463	AGS605/0							1	-	C	
	KEAS77/81							1	-	LM	
	KEAS77/32							1	-	LM	

TANKS
FUEL

Ref. No	Part No.	Description						No. off	Material Specification	Class of Eqt. M.R. or L.M.	Plate No.
		1	2	3	4	5	6				

TANKS

FUEL

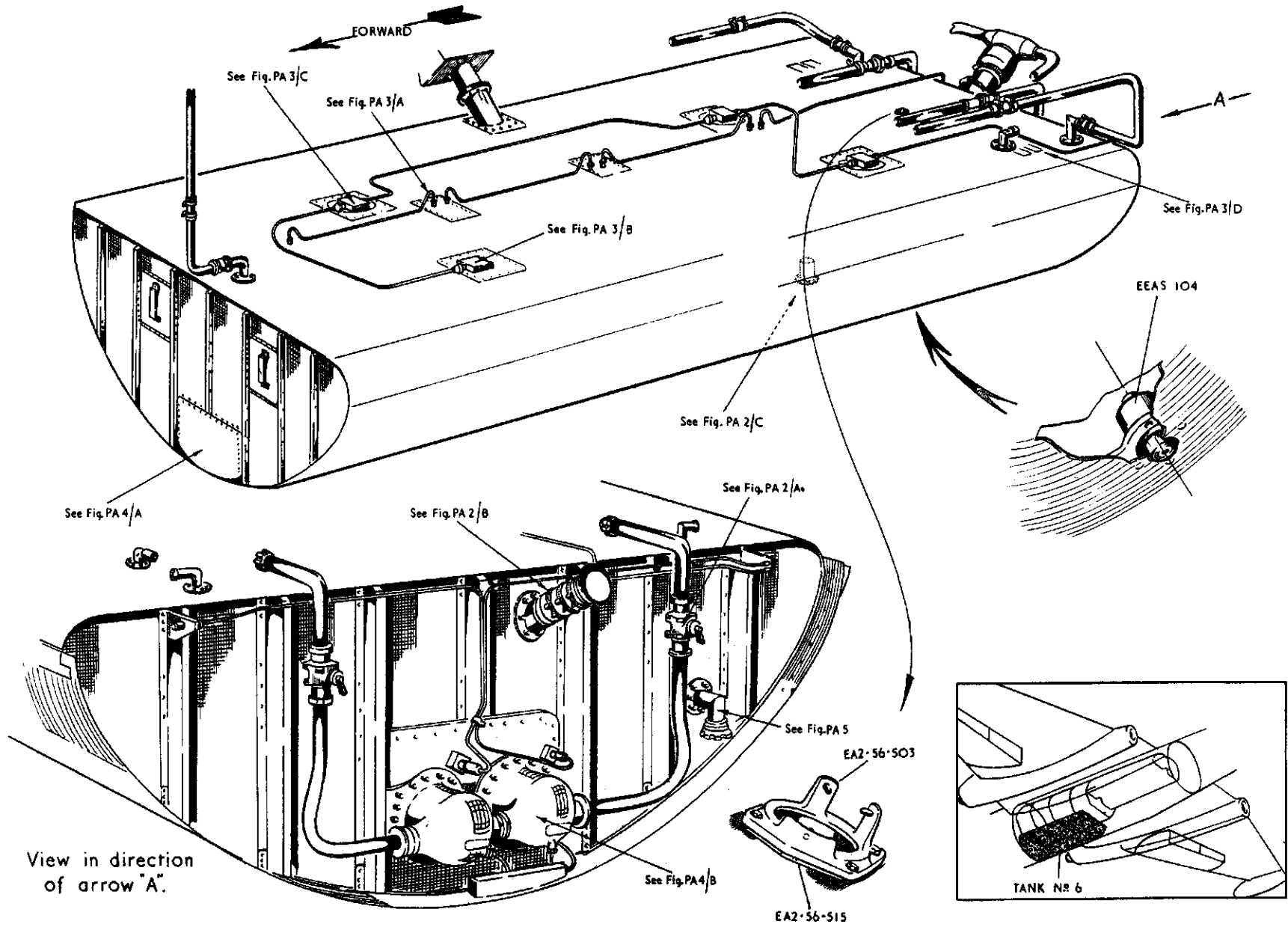
Ref. No	Part No.	Description						No. off	Material Specification	Class of Eqpt. M.R. or L.M.	Plate No.
		1	2	3	4	5	6				
3392	EA3.62.77							1	DTD610	C	PA.13
28D/1007982	AS1248/1C							18	-	C	
5250	EA2.62.71							18	Petrolite	C	PA.13
12922	EA3.62.189							1	-	C	PA.13
28S/7100783	4100							6	-	C	
12923	EA3.62.185							1	Neo-K-Tex	C	PA.13
5511	EAL.20.10897							1	-	B	PA.13
21522	EAL.20.10901							1	-	C	PA.13
5512	EAL.20.10907							1	DTD683	C	PA.13
12335	EAL.20.10905							1	Hycatrol	C	PA.13
28Q/9709283	AS2230/507							17	-	C	
3458	EAL.20.2903							2	Neo-K-Tex	C	PA.13
6154	EA2.62.61							3	Neo-K-Tex	C	PA.12
12904	EA3.62.117							50	Petrolite	C	
36335	EB8.62.147							7	DTD5054	C	
28D/1214091	AS1242/2C							6	-	C	
-	-							1	-	-	
-	-							1	-	-	
-	-							1	-	-	
12G/1279	-							1	-	C	
1578	EAL.81.939							1	-	C	PA.12
5K/9107065	-							2	-	C	
5K/9107067	-							1	-	C	
1579	EAL.81.938							1	-	C	PA.12
5K/7298	HCL90							2	-	C	PA.12
1580	EAL.81.428							1	-	C	PA.12
5F/2270	-							QR	-	C	PA.12
28M/10335	AGS2002/Q1							3	-	C	
33014	EB8.57.1491							1	-	C	PA.12
33020	EB8.57.1493							1	-	C	PA.12
1583	EAL.20.10505							3	DTD124	C	PA.12

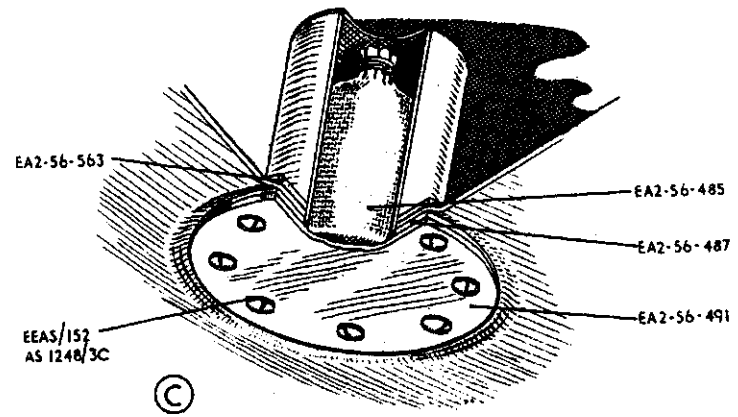
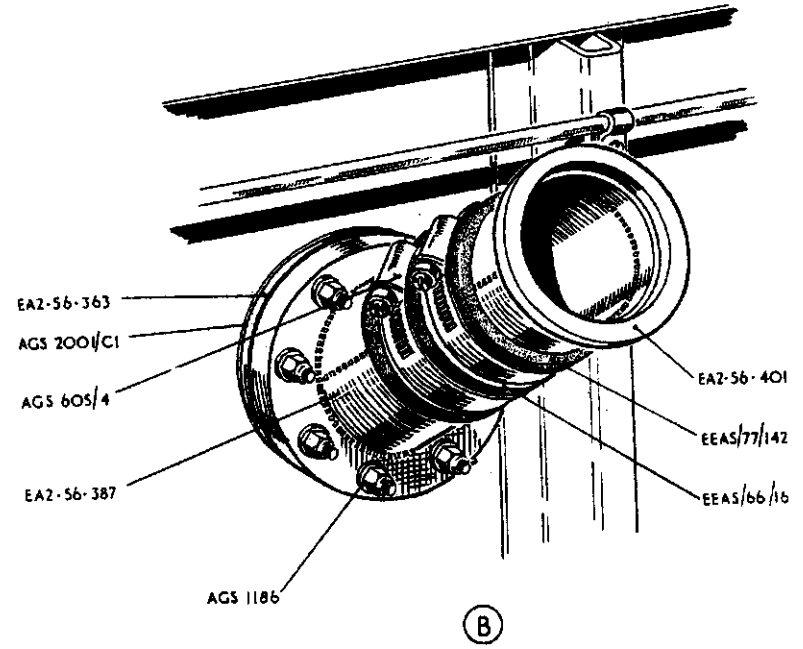
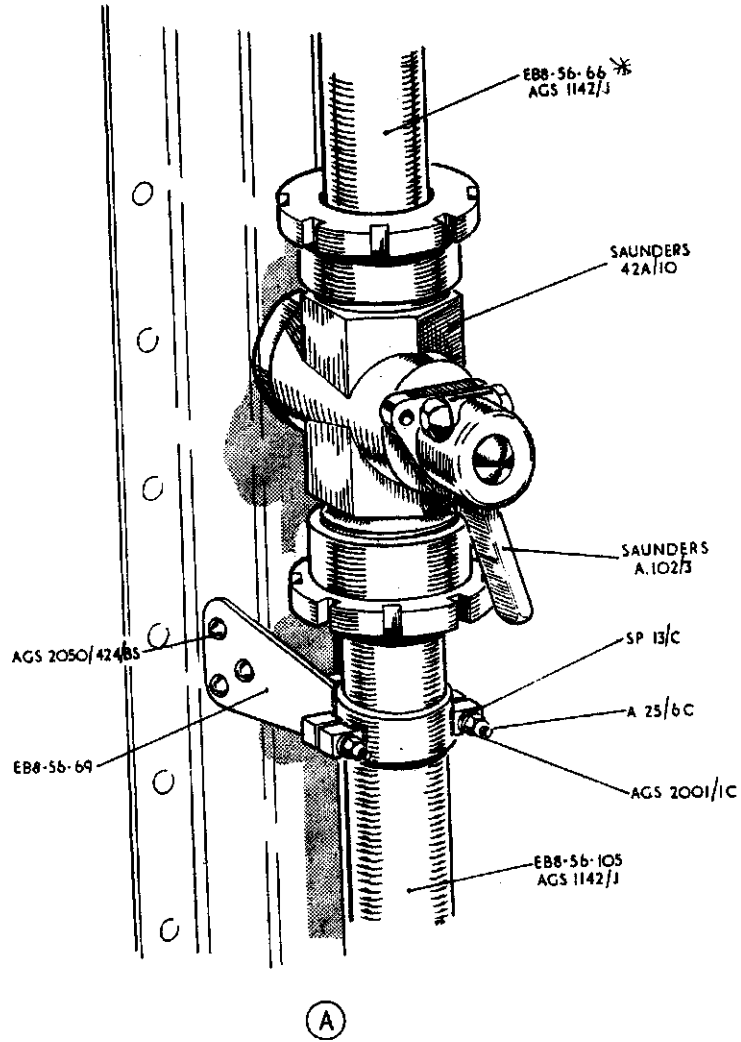
RESTRICTED

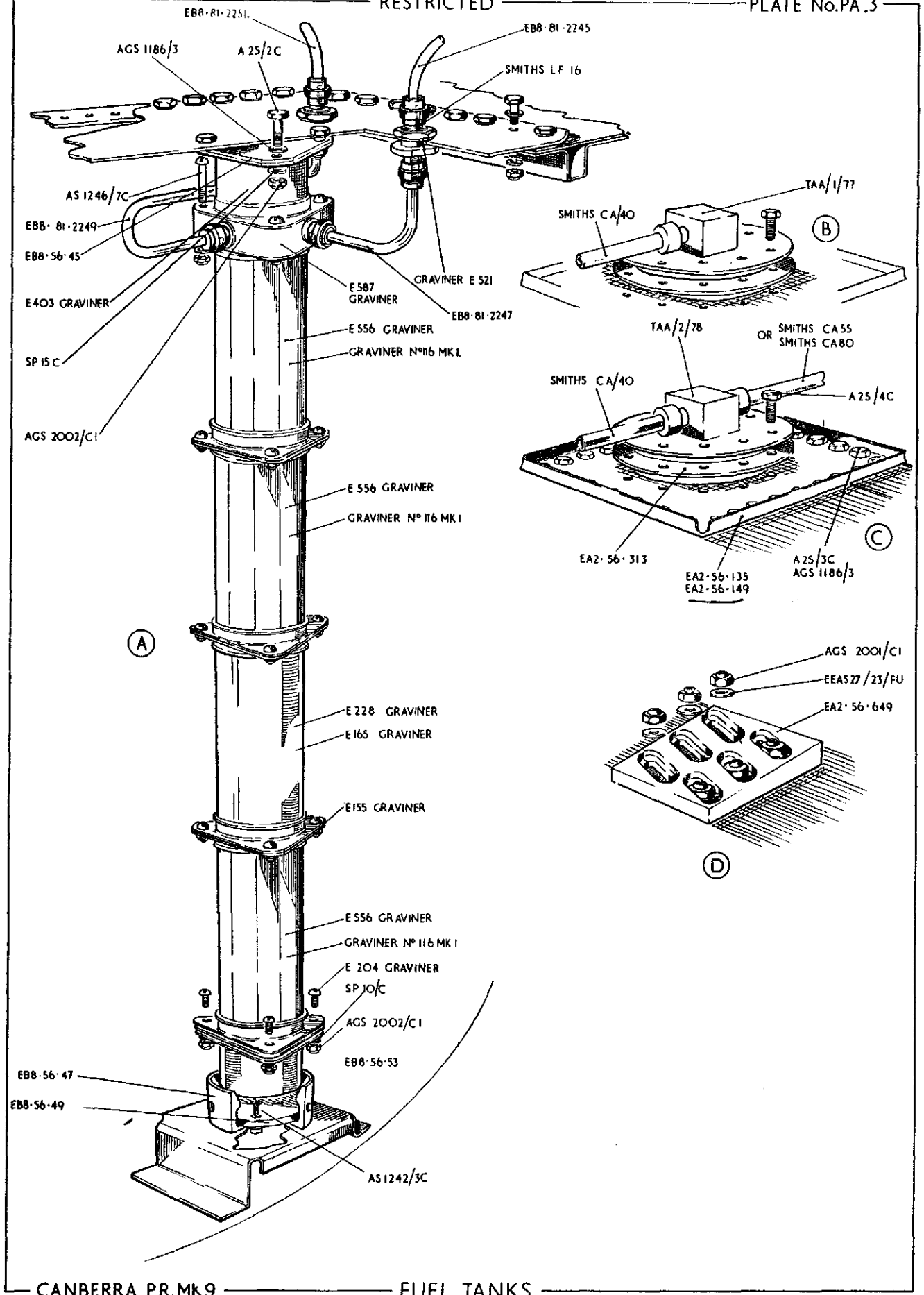
TANKS

FUEL

Ref. No	Part No.	Description						No. off	Material Specification	Class of Eqt. M.R. or L.M.	Plate No.
		1	2	3	4	5	6				







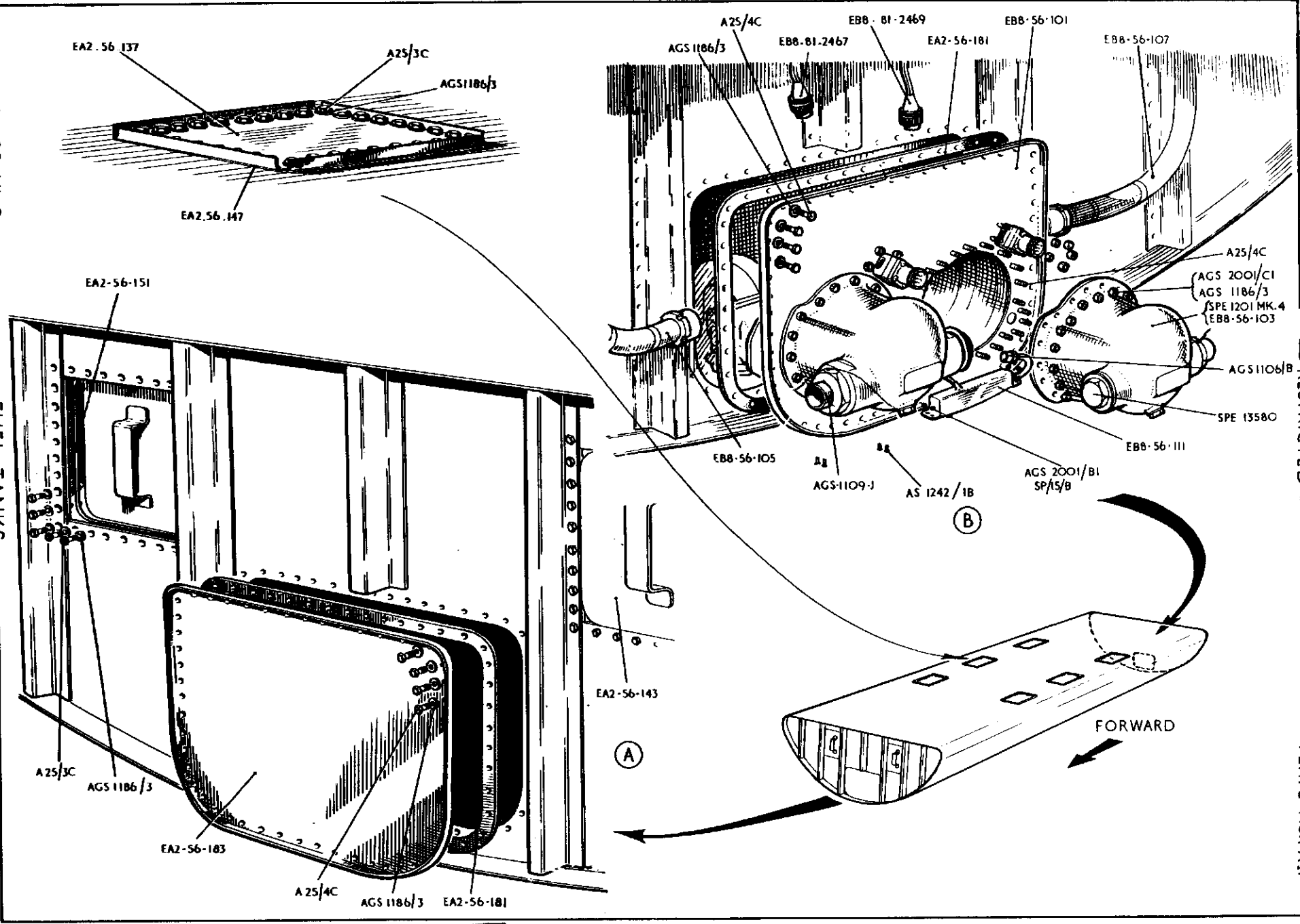
CANBERRA P.R. MK.9

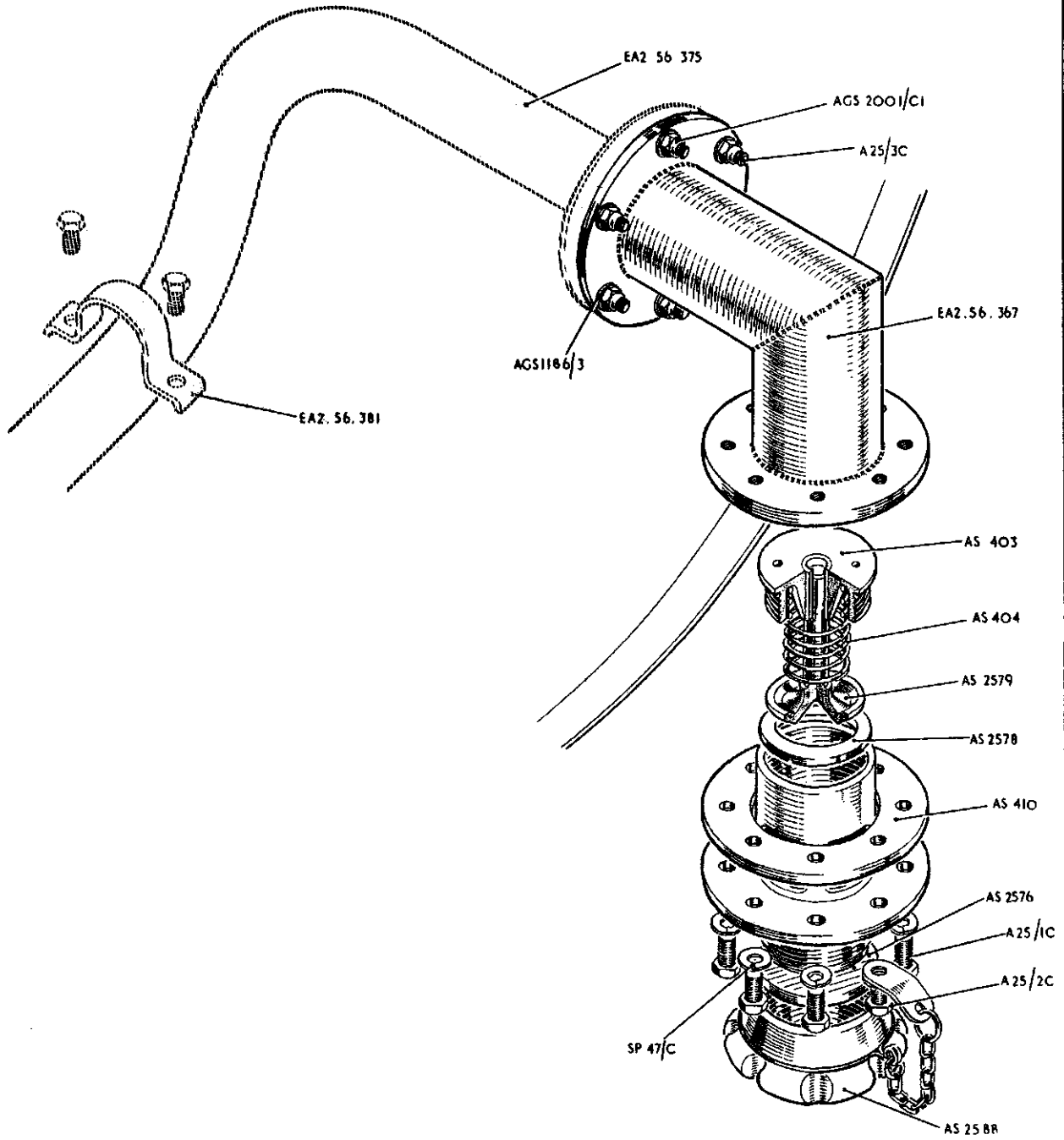
FUEL TANKS

Issued with AL.35

RESTRICTED

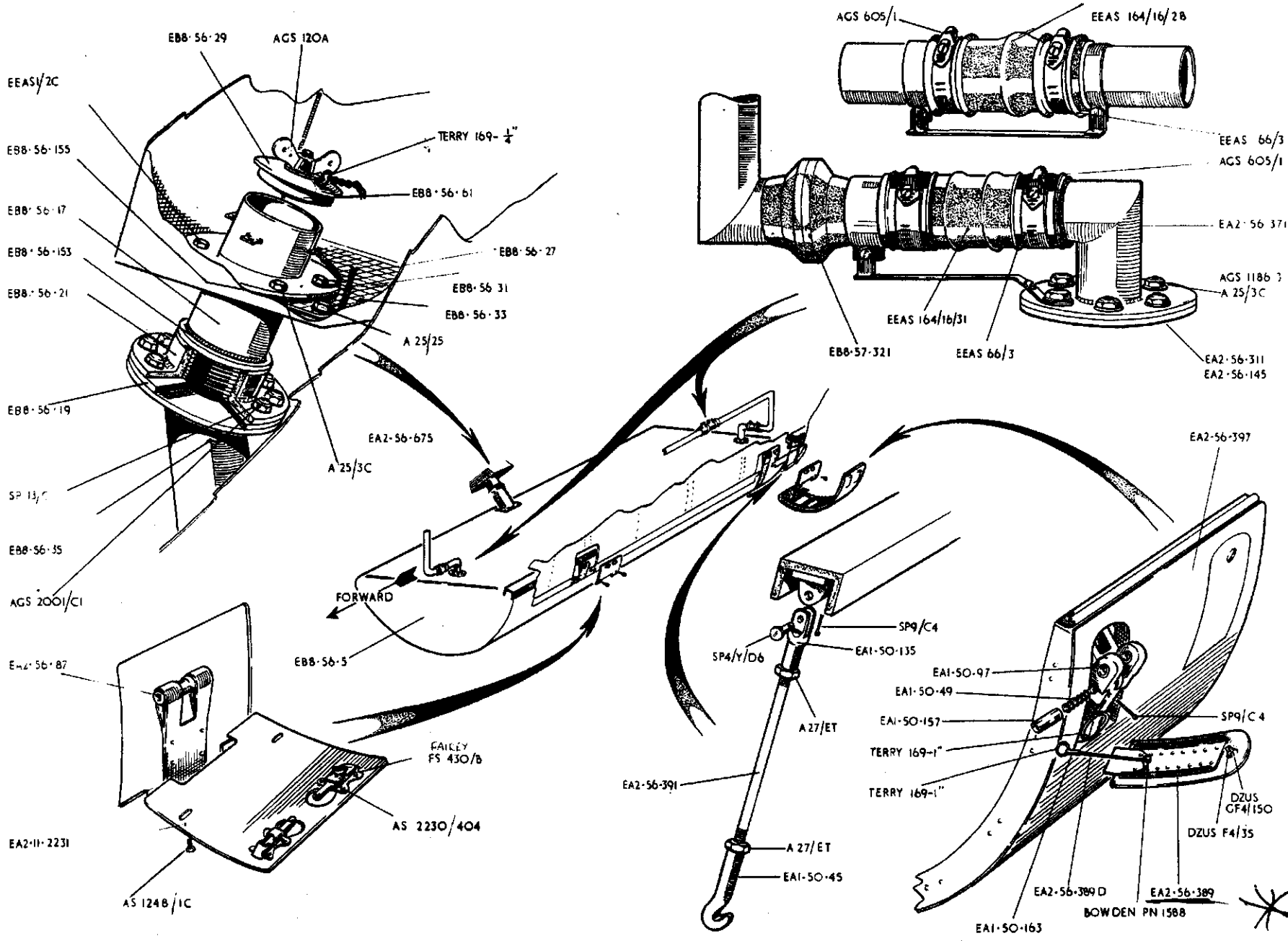
PLATE No.PA.4





CANBERRA P.R.M.K.9

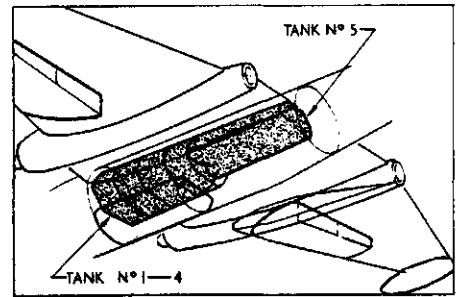
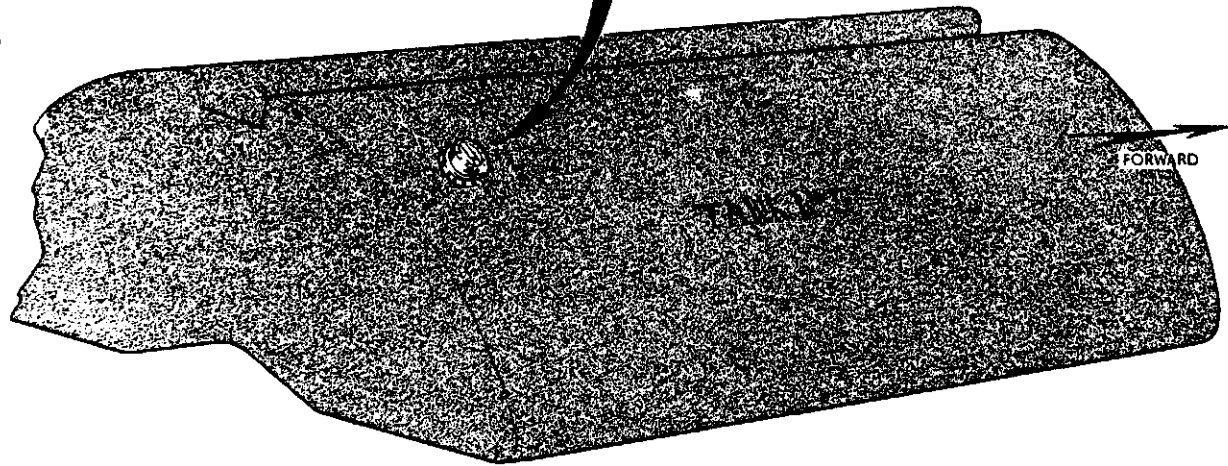
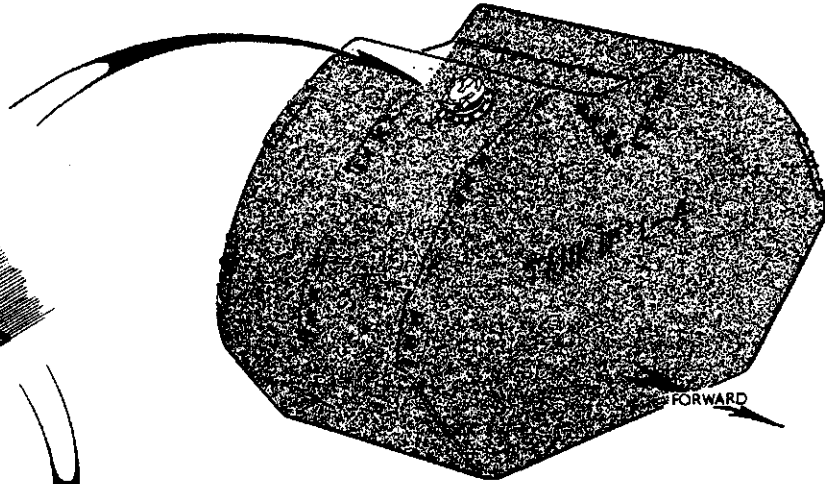
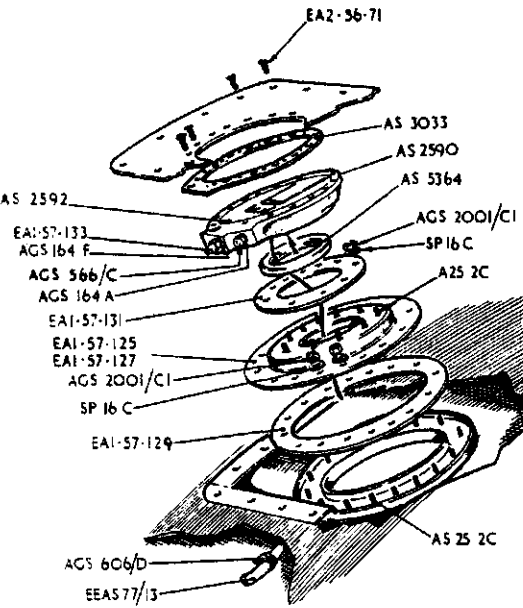
FUEL TANKS

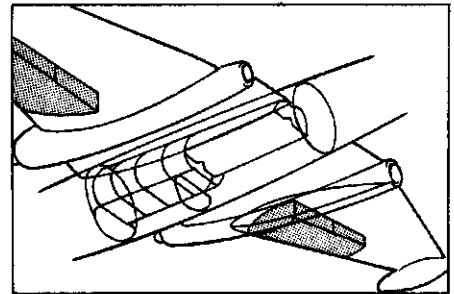
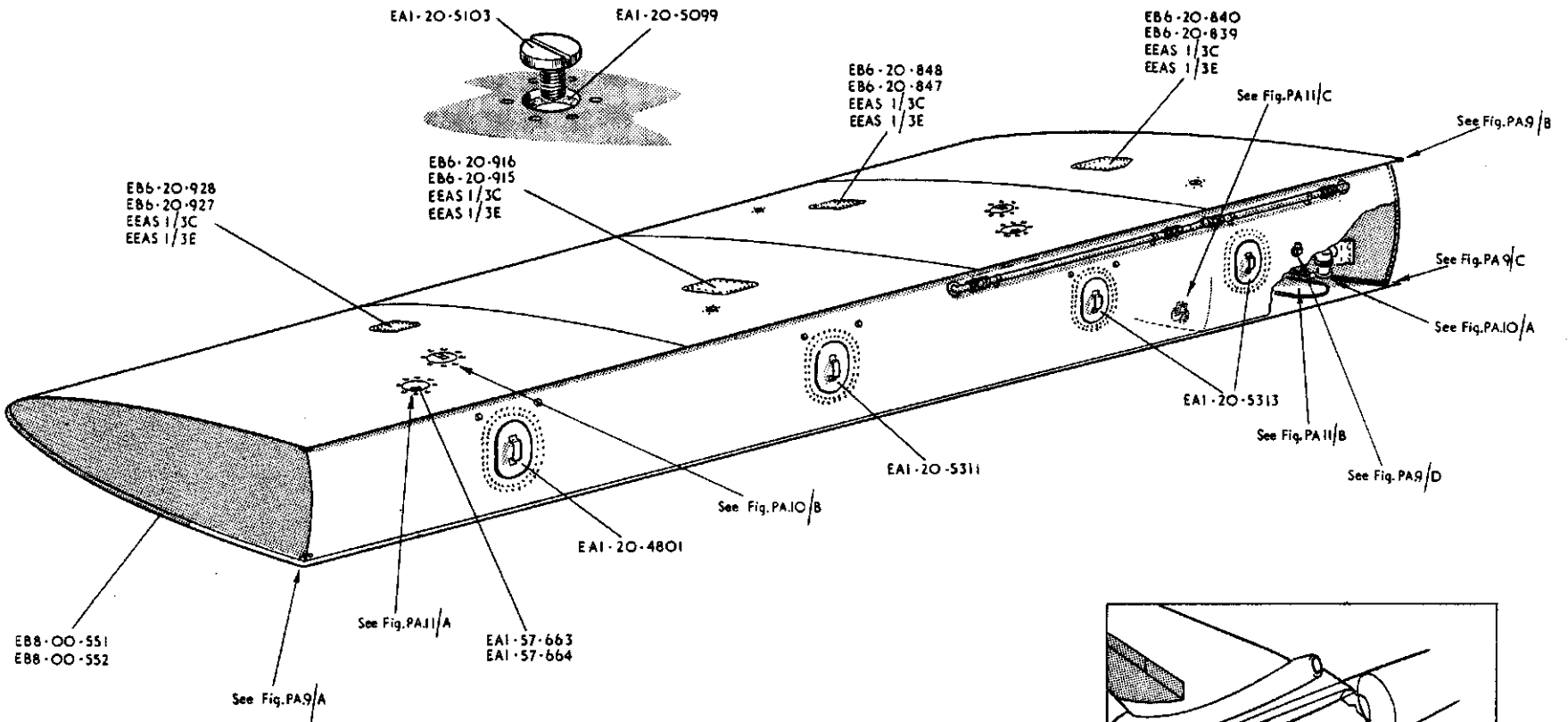


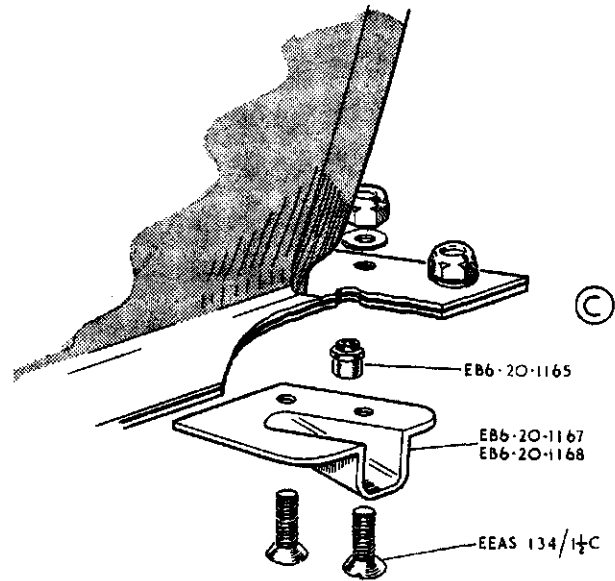
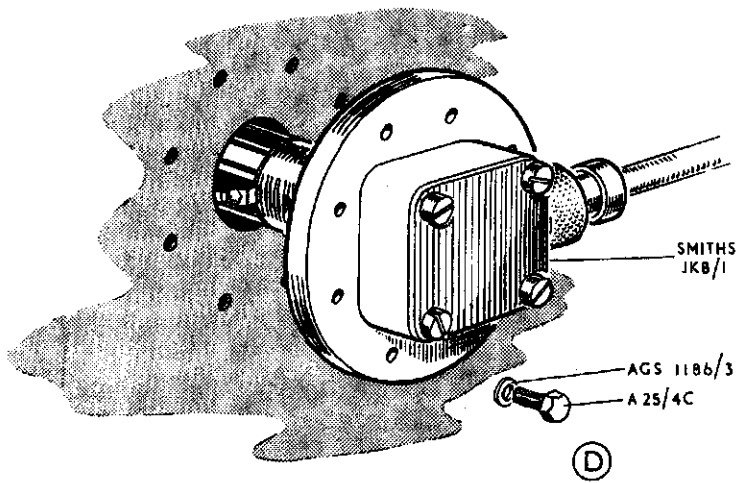
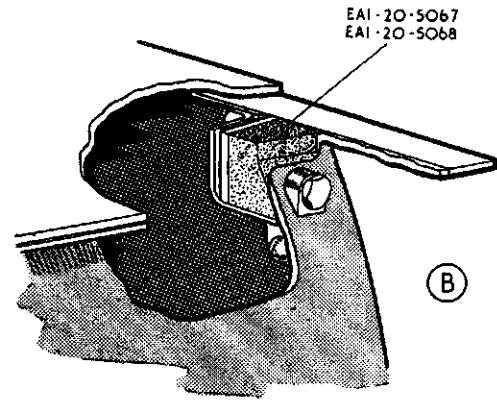
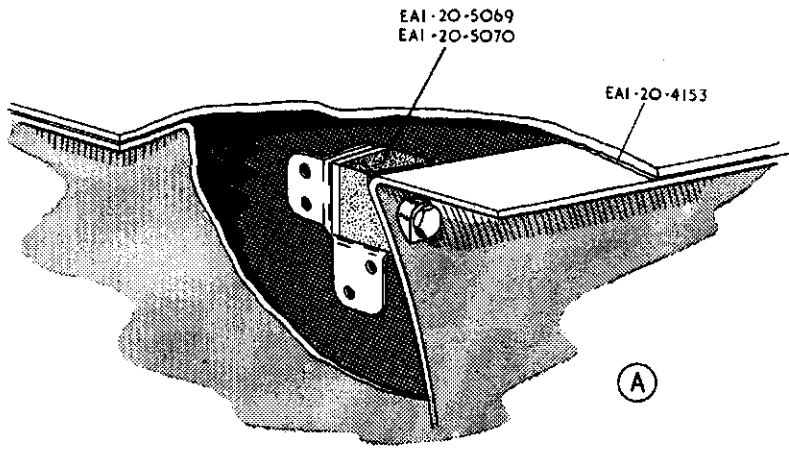
Issued with AL.14.

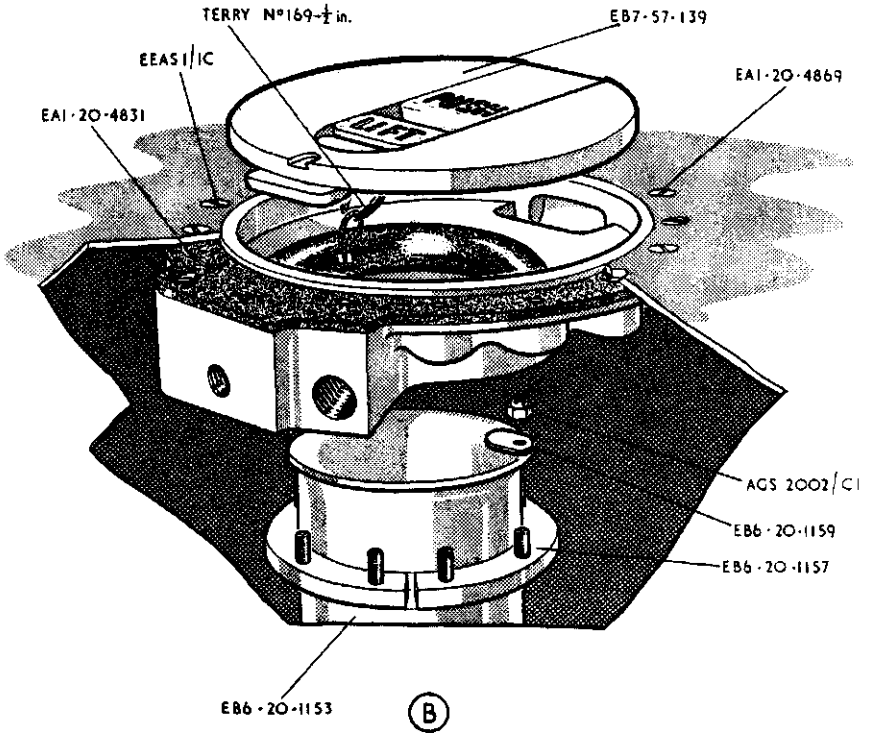
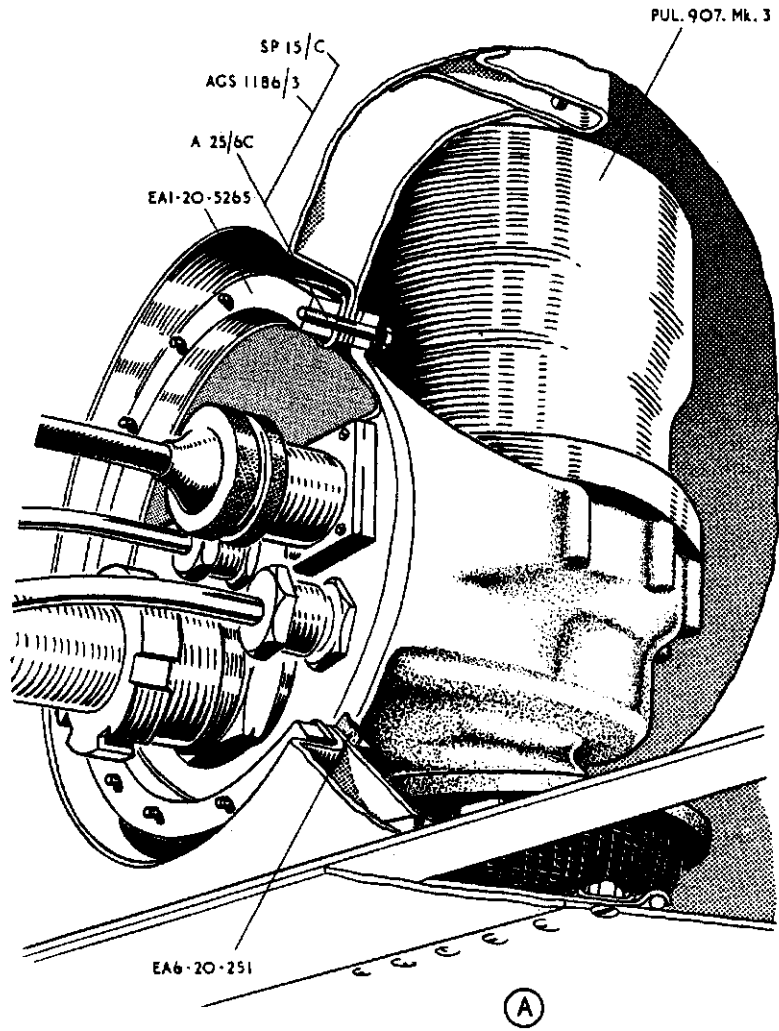
RESTRICTED

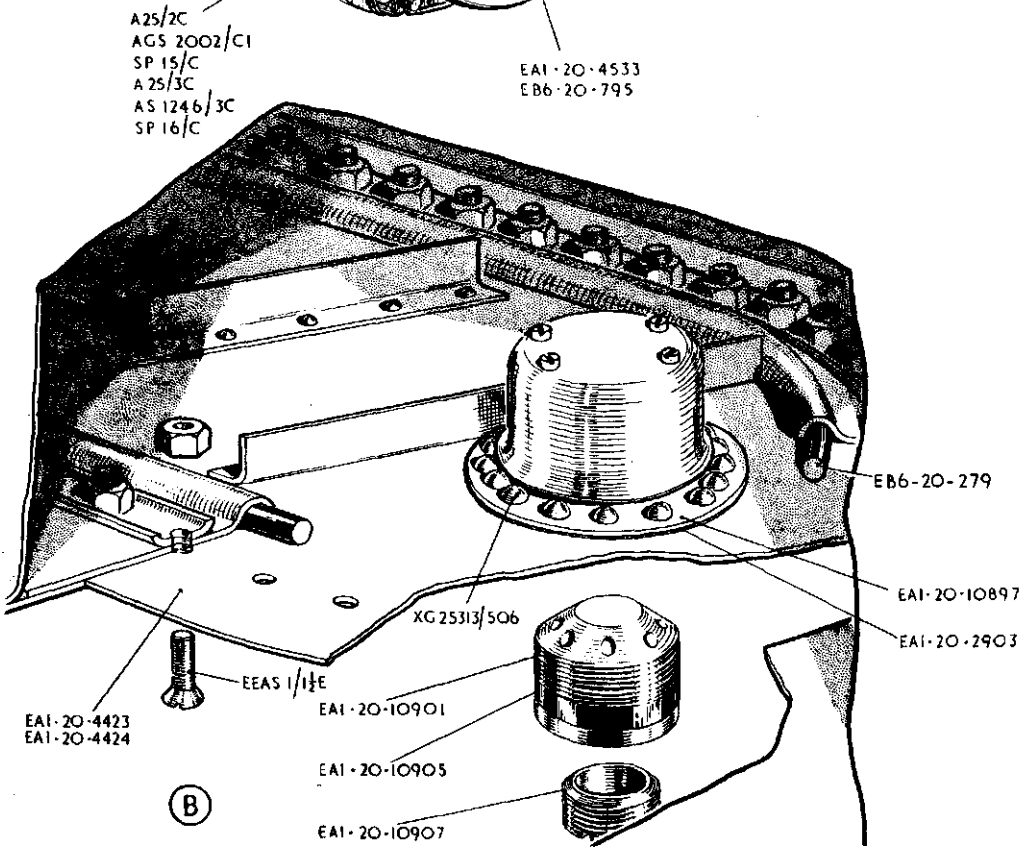
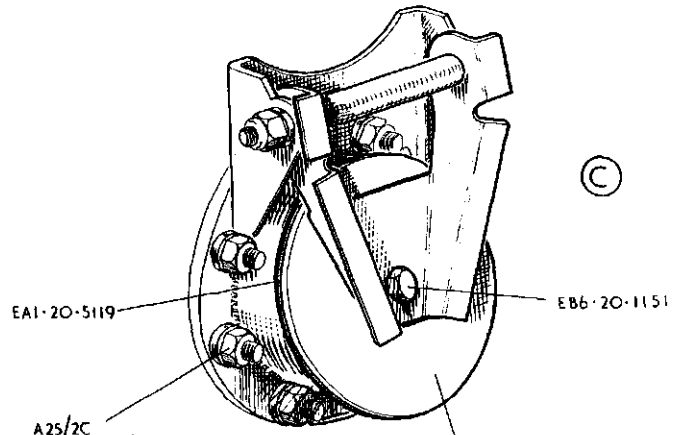
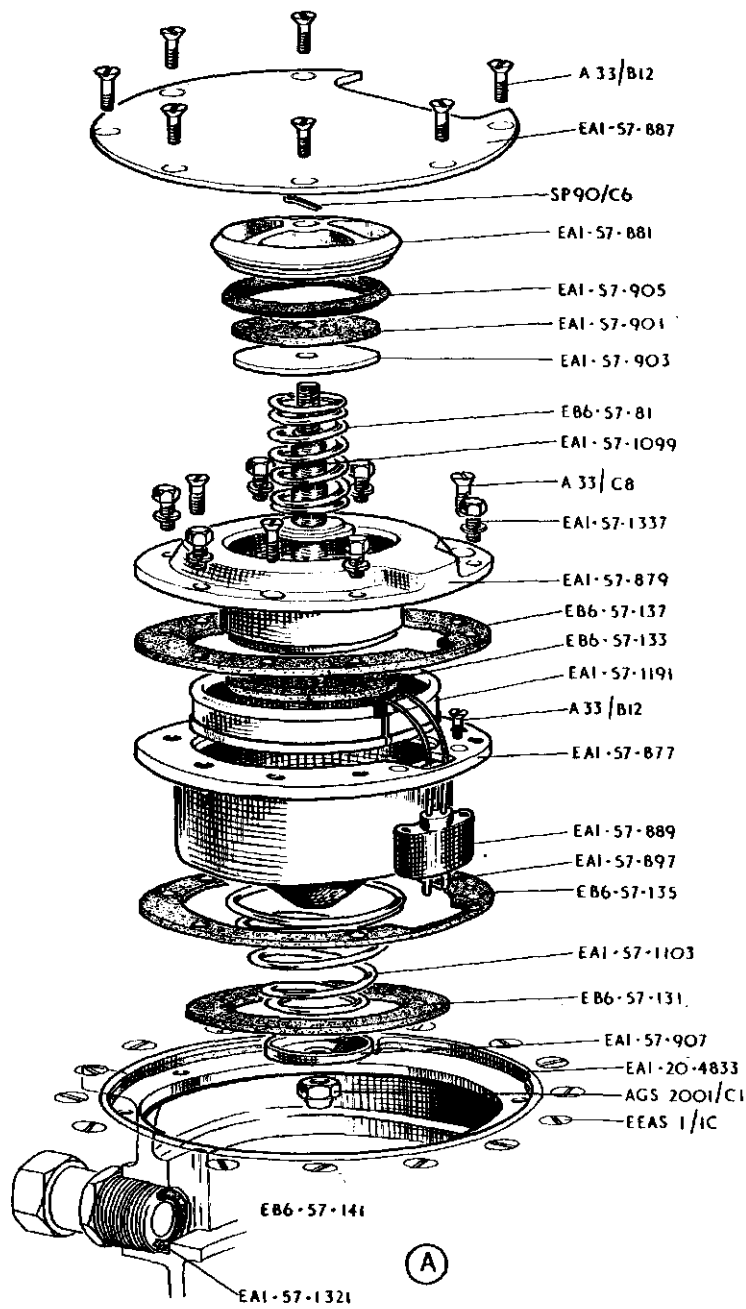
PLATE NO. PA.6

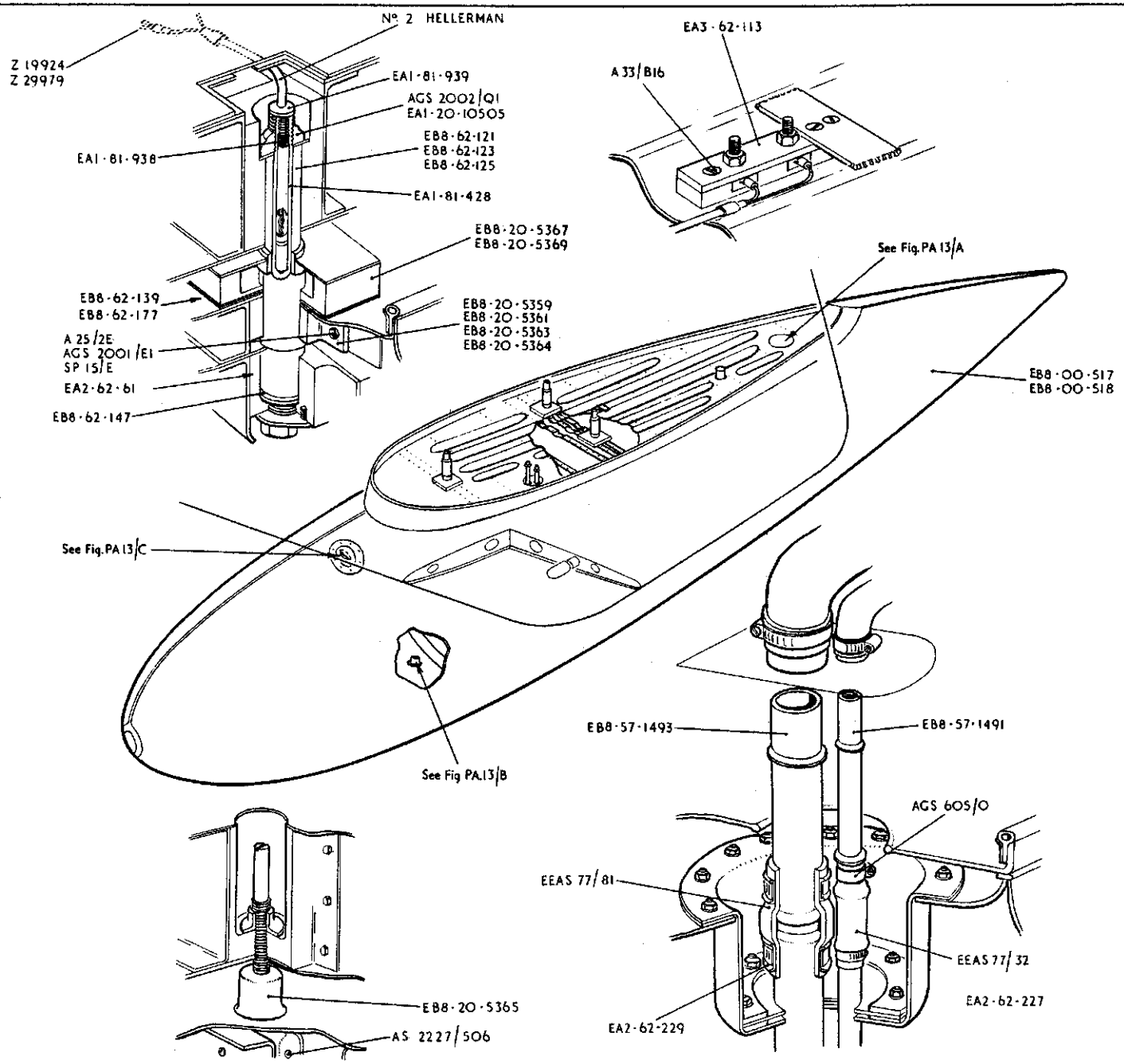








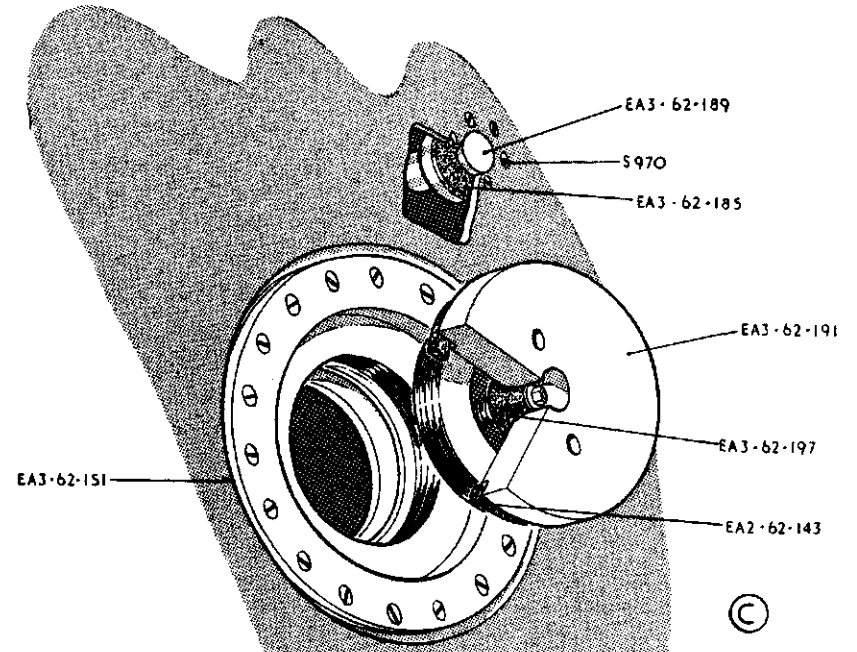
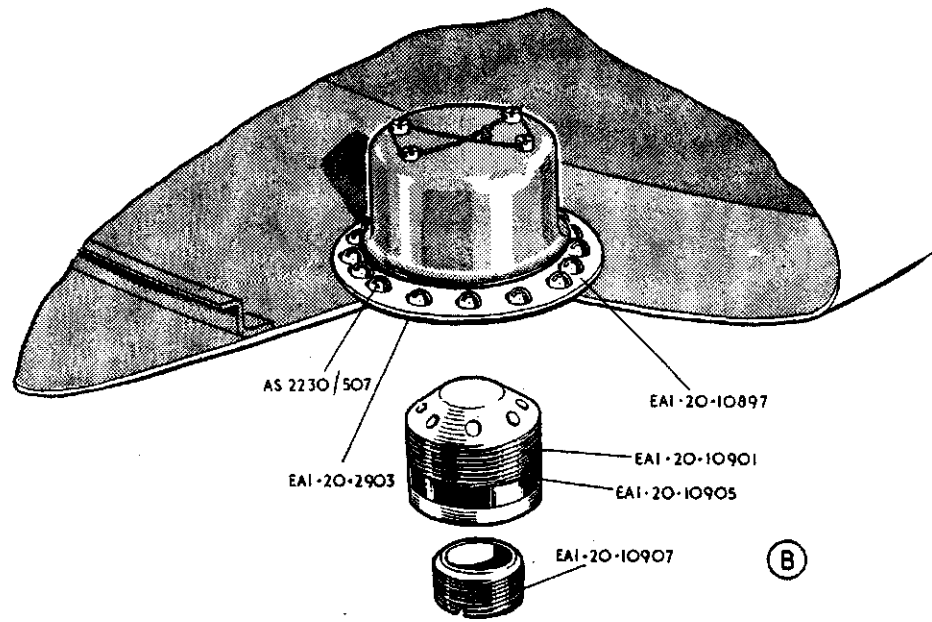
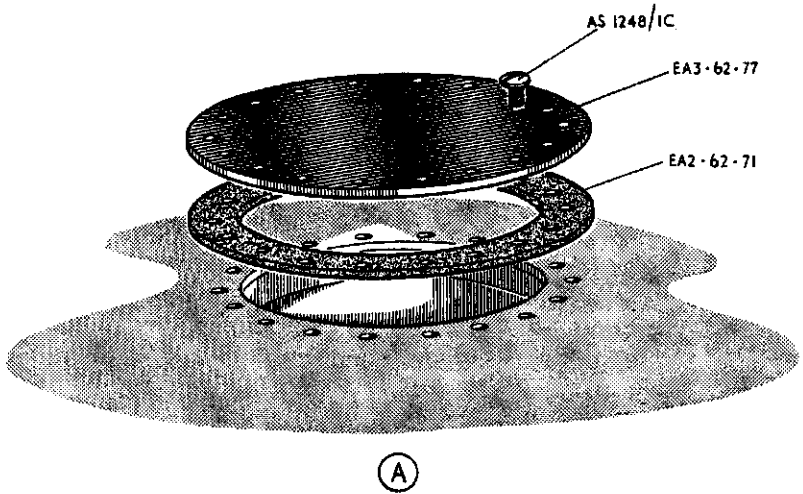




Issued with AL. 27

RESTRICTED

PLATE No. PA.12



This file was downloaded
from the RTFM Library.

Link: www.scottbouch.com/rtfm

Please see site for usage terms,
and more aircraft documents.

