

## CONTROLS

## ENGINE CONTROLS IN WING PORT

Part Number	Description	No. Off	Matl. Spec.	Plate No.	
					1
EB6.47.293	CONTROLS, ENGINE IN WING, PORT, ASSEMBLY Spares for:-	-	-		
EB7.47.41	LEVER, CONTROL, CONNECTING ENGINE CONTROLS, ASSEMBLY (PRE-MOD 5028)	1	-	CC1/1	
EB7.47.103	LEVER, CONTROL, CONNECTING ENGINE CONTROLS ASSEMBLY (MOD 5028) Spares for:-	1	-		
SKEFCO EE.4	BEARING, ball-race	1	-	CC1/1A	
SKEFCO EE.5	BEARING, ball-race	1	-	CC1/1B	
HOFFMAN CJO	BEARING, spherical	2	-	CC1/2	
EA1.47.61	COVER, bearing	1	L64	CC1/2A	
EA1.47.57	CUP, lever mounting	1	L64	CC1/2B	
EA1.47.63	CUP, lever mounting	1	-	CC1/2C	
EB7.47.39	LEVER, control (Pre-Mod 5028)	1	DTD687	CC1/3	
EB7.47.107	LEVER, control (Mod 5028)	1	-		
EA9.47.123	LEVER, control (Pre-Mod 5028)	1	DTD687	CC1/4	
EB7.47.105	LEVER, control (Mod 5028)	1	-		
A27ES	NUT, 1/4" BSF	1	-	CC1/4A	
SP90C7	PIN, split	1	-	CC1/4B	
EA1.47.55	PLATE, bearing cover	1	L64	CC1/4C	
EA1.47.59	SLEEVE, spacing	1	L64	CC1/5	
EA1.47.53	SPINDLE, control	1	L40	CC1/6	
EA1.47.65	WASHER, clamping	1	L64	CC1/7	
SP90G16	Pin, split Attaching parts for EB7.47.41 or EB7.47.103:-	1	-	CC1/7A	
EB7.47.53	LEVER, CONTROL, CONNECTING ENGINE CONTROLS, ASSEMBLY (PRE-MOD 5028)	1	-	CC1/8	
EB7.47.95	LEVER, CONTROL, CONNECTING, ENGINE CONTROLS, ASSEMBLY (MOD 5028) Spares for:-	1	-		
EA9.47.103	BOLT	1	DTD683	CC1/9	
EA9.47.97	BRACKET	1	DTD300	CC1/10	
EA9.47.107	BUSH	1	S1	CC1/11	
EB7.47.45	LEVER, CONTROL, ASSEMBLY (PRE-MOD 5028)	1	-	CC1/12	
EB7.47.97	LEVER, CONTROL, ASSEMBLY (MOD 5028) Spares for:-	1	-		
SKEFCO EE.5	BEARING, ballrace	2	-	CC1/13	
HOFFMAN CJO	BEARING, spherical	1	-	CC1/14	
AGS2030/23	CIRCLIP, internal	1	-	CC1/14A	
EA9.47.111	HOUSING, bearing	1	S1	CC1/14B	
EA9.47.119	LEVER (Pre-Mod 5028)	1	DTD124	CC1/14C	
EB7.47.99	LEVER (Mod 5028)	1	S514		
EB7.47.43	LEVER (Pre-Mod 5028)	1	DTD124	CC1/14D	
EB7.47.101	LEVER (Mod 5028)	1	S514		
SP21	NIPPLE, lubrication	1	-	CC1/14E	
EA9.47.121	PIECE, distance	1	DTD683	CC1/15	
AS1903E12	WASHER, saddle	1	-	CC1/15A	
EA9.47.99	LEVER, CONTROL, ASSEMBLY (PRE-MOD 5028)	1	-	CC1/16	
EB7.47.109	LEVER, CONTROL, ASSEMBLY (MOD 5028) Spares for:-	1	-		
SKEFCO EE.5	BEARING, ballrace	2	-	CC1/17	
HOFFMAN CJO	BEARING, spherical	2	-	CC1/18	
AGS2030/23	CIRCLIP, internal	1	-	CC1/18A	
EA9.47.111	HOUSING, bearing	1	S1	CC1/18B	

CONTROLS  
ENGINE CONTROLS IN WING PORT

Part Number	Description						No. Off	Mtl. Spec.	Plate No.
	1	2	3	4	5	6			
EA9.47.113	.	.	.	.	.	.	1	DTD124	CC1/18C
EB7.47.111	.	.	.	.	.	.	1	S514	
EA9.47.115	.	.	.	.	.	.	1	DTD124	CC1/18D
EB7.47.113	.	.	.	.	.	.	1	S514	
SP21	.	.	.	.	.	.	1	-	CC1/18E
EA9.47.121	.	.	.	.	.	.	1	DTD683	CC1/19
AS1903E12	.	.	.	.	.	.	1	-	CC1/19A
AGS575A	.	.	.	.	.	.	1	-	CC1/19B
EA9.47.105	.	.	.	.	.	.	2	DTD683	CC1/20
EA9.47.109	.	.	.	.	.	.	1	DTD683	CC1/21
	Attaching parts for EB7.47.53 or EB7.47.95:-								
A25/4C	.	.	.	.	.	.	4	-	CC1/21A
AGS20001C1/66	.	.	.	.	.	.	4	-	CC1/21B
EA9.47.169	.	.	.	.	.	.	4	-	CC1/23
EA6.47.139	.	.	.	.	.	.	1	-	CC1/22
	Attaching parts for EA6.47.139:-								
A25/6C	.	.	.	.	.	.	1	-	CC1/22A
A25/4E	.	.	.	.	.	.	1	-	CC1/22B
A27CP	.	.	.	.	.	.	1	-	CC1/22C
A27ES	.	.	.	.	.	.	1	-	CC1/22D
SP90C7	.	.	.	.	.	.	1	-	CC1/22E
SP15E	.	.	.	.	.	.	1	-	CC1/22F
SP15C	.	.	.	.	.	.	1	-	CC1/22G
EB7.47.31	.	.	.	.	.	.	2	-	
	TUBE, CONTROL, FROM FUSELAGE TO CONTROL LEVER AT RIB 2 ASSEMBLY (PRE-MOD 2619)								
EB7.47.83	.	.	.	.	.	.	2	-	CC1/24
	TUBE, CONTROL, FROM FUSELAGE TO CONTROL LEVER AT RIB 2, ASSEMBLY (MOD 2619)								
	Spares for:-								
EA3.47.53	.	.	.	.	.	.	1	-	CC1/25
A27JT	.	.	.	.	.	.	1	-	CC1/25A
EEAS234	.	.	.	.	.	.	1	-	CC1/26
EB7.47.37	.	.	.	.	.	.	2	-	CC1/27
	TUBE, CONTROL, FROM LEVER ASSEMBLY AT RIB 2 TO INTERMEDIATE CONTROL LEVER ASSEMBLY (PRE-MOD 5028)								
EB7.47.89	.	.	.	.	.	.	2	-	
	TUBE, CONTROL, FROM LEVER ASSEMBLY AT RIB 2 TO INTERMEDIATE CONTROL LEVER ASSEMBLY (MOD 5028)								
	Spares for:-								
HOFFMAN	.	.	.	.	.	.			
CJO	.	.	.	.	.	.	1	-	CC1/28
EA3.47.49	.	.	.	.	.	.	1	-	CC1/29
A27ET	.	.	.	.	.	.	1	-	CC1/29A
EA9.47.89	.	.	.	.	.	.	1	-	CC1/30
	TUBE, control, throttle intermediate control lever to engine control								
EA9.47.91	.	.	.	.	.	.	1	-	CC1/31
	TUBE, control, shut-off cock intermediate control lever to engine control relay assembly								
	Attaching parts for control tubes:-								
EEAS12/1	.	.	.	.	.	.	QR	S11	CC1/32
EA9.47.173	.	.	.	.	.	.	QR	-	CC1/33
EEAS63	.	.	.	.	.	.	2	S11	CC1/34
SP90C7	.	.	.	.	.	.	2	-	CC1/34A
SP15G	.	.	.	.	.	.	2	-	CC1/34B
EEAS28/3DU	.	.	.	.	.	.	2	-	CC1/35

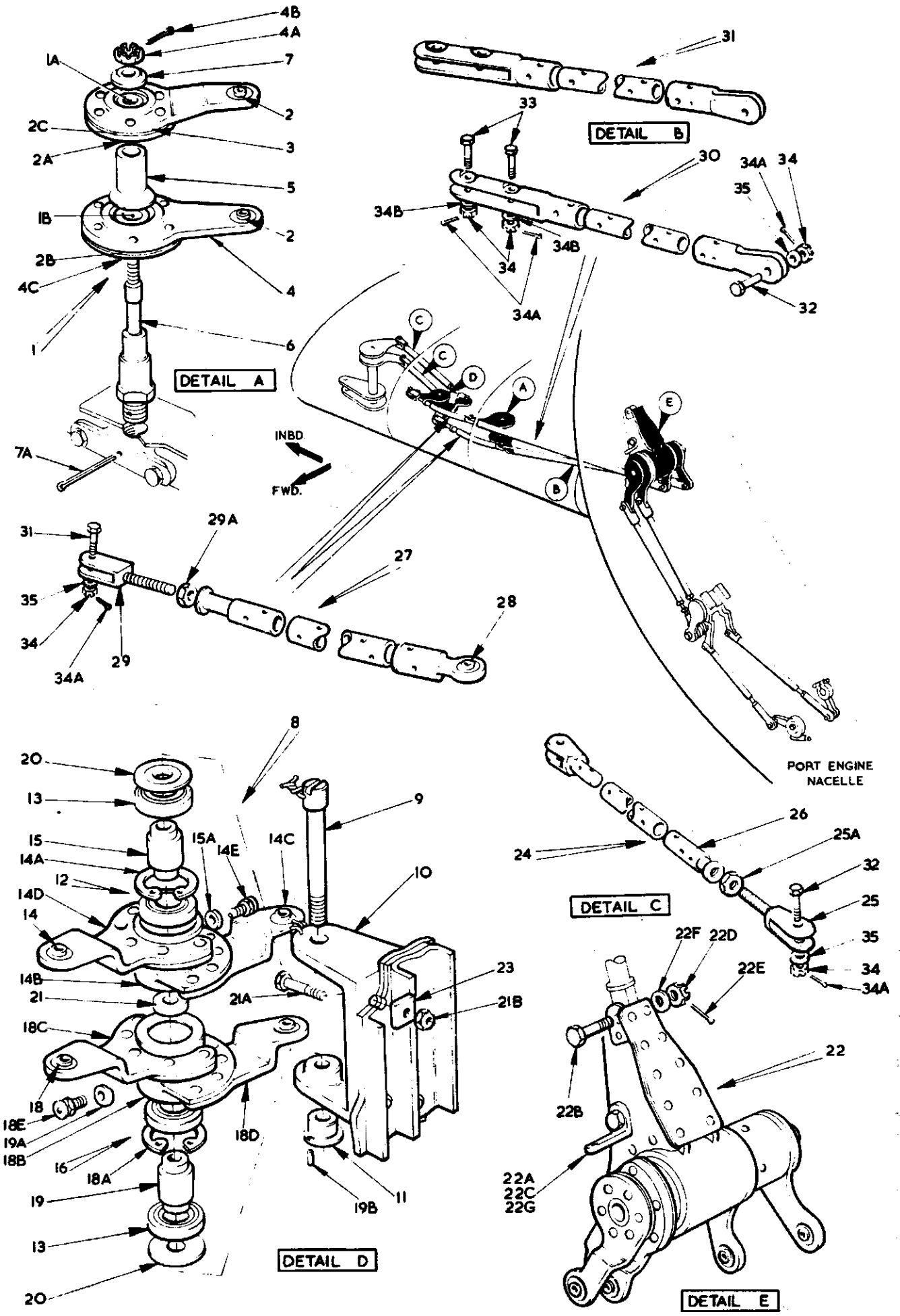


FIG.1 ENGINE CONTROLS IN PORT MAINPLANE

This file was downloaded  
from the RTFM Library.

Link: [www.scottbouch.com/rtfm](http://www.scottbouch.com/rtfm)

Please see site for usage terms,  
and more aircraft documents.

