

MISCELLANEOUS
ATTACHMENT DETAILS

Part Number	Description	No. Off	Mati. Spec.	Plate No.
EB6.00.25	CENTRE TO REAR FUSELAGE, ATTACHMENT DETAILS Spares for :-	-	-	
A25/6E	. BOLT, 1/4" BSF	48	-	N1/1
A25/7E	. BOLT, 1/4" BSF	8	-	N1/2
A25/10E	. BOLT, 1/4" BSF	6	-	N1/3
A25/11E	. BOLT, 1/4" BSF	4	-	N1/4
A25/13E	. BOLT, 1/4" BSF	24	-	N1/5
A25/6G	. BOLT, 5/16" BSF	16	-	N1/6
A25/7G	. BOLT, 5/16" BSF	8	-	N1/7
A25/13G	. BOLT, 5/16" BSF	30	-	N1/8
A25/15G	. BOLT, 5/16" BSF	12	-	N1/9
A25/16N	. BOLT, 1/2" BSF	2	-	N1/10
A25/18N	. BOLT, 1/2" BSF	2	-	N1/11
No. 1790	. CEMENT	QR	-	
AGS2001E1/66	. NUT, 1/4" BSF	90	-	N1/12
AGS2001G1	. NUT, 5/16" BSF	66	-	N1/13
AGS2001N1	. NUT, 1/2" BSF	4	-	N1/14
SP15E	. WASHER	58	-	N1/15
SP15G	. WASHER	16	-	N1/16
SP15N	. WASHER	4	-	N1/17
EA1.10.2713	. WASHER, special	4	-	N1/17A
EA1.00.63	CONTROLS TO RUDDER AND ELEVATOR ATTACHMENT DETAILS Spares for :-	-	-	
EEAS13/1	. BOLT, special	2	-	N3/1
EEAS14	. BUSH, bearing	2	-	N3/2
EEAS63E	. NUT, slotted	2	S96	N3/3
EEAS127	. PIECE, distance	2	S96	N3/4
SP90C7	. PIN, split	2	-	N3/5
EA1.00.55	FIN TO FUSELAGE, ATTACHMENT DETAILS Spares for :-	-	-	
EA1.32.75 or	. BOLT, special port (PRE-ALT. R60/12)	1	-	N4/1
EK5.32.607	. BOLT, special port (ALT R60/12)	1	-	
EA1.32.77 or	. BOLT, special starboard (PRE-ALT. R60/12)	1	-	N4/2
EK5.32.609	. BOLT, special starboard (ALT. R60/12)	1	-	
A25/1C	. BOLT, 2BA	10	-	N4/3
A25/9C	. BOLT, 2BA	6	-	N4/4
AS1242/1C	. BOLT, 2BA	18	-	N4/5
AS1242/1 1/2 C	. BOLT, 2BA	36	-	N4/6
EEAS1/4C	. SCREW, 2BA	58	-	N4/7
EEAS1/5C	. SCREW, 2BA	20	-	N4/8
EA1.00.23	FRONT FUSELAGE TO CENTRE FUSELAGE ATTACHMENT DETAILS Spares for :-	-	-	
EA1.10.1207	. BOLT, special	111	S11	N3/6
EA1.10.1209	. BOLT, special	48	S11	N3/7
A25/1C	. BOLT, 2BA	18	-	N3/8
A25/2C	. BOLT, 2BA	15	-	N3/9
A25/15N	. BOLT, 1/2" BSF	4	-	N3/10
EA3.10.6541	. BOLT, special, 5/16" (Alt. R60/301)	6	-	

R

R

R

R

MISCELLANEOUS
ATTACHMENT DETAILS

Part Number	Description	No. Off	Matl. Spec.	Plate No.
R 33H56	. CEMENT, bostik	QR	—	
AGS.2001N1	. NUT, 1/2" BSF	4	—	N3/11
SP55E	. WASHER, spring	111	—	N3/12
SP55G	. WASHER, spring	54	—	N3/13
SP15C	. WASHER	31	—	N3/14
SP15N	. WASHER	4	—	N3/14A
EA1.10.2713	. WASHER, special	4	—	N3/15
EA1.00.59	REAR FAIRING TO FUSELAGE, ATTACHMENT DETAILS Spares for :—	—	—	
A25/4E	. BOLT, 1/4" BSF	2	—	N4/9
A27ES	. NUT, 1/4" BSF	2	—	N4/10
AGS2001E1/66	. NUT, 1/4" BSF	4	—	N4/11
SP90C7	. PIN, split	2	—	N4/12
EEAS1/3C	. SCREW, 2BA	4	—	N4/13
SP16E	. WASHER, 1/4"	2	—	N4/14
EA1.00.57	RUDDER TO FIN AND FUSELAGE, ATTACHMENT DETAILS Spares for :—	—	—	
EA1.32.203	. BOLT, special	2	S11	N4/15
EA1.32.205	. BOLT, special	4	S11	N4/16
A27SS	. NUT, 1/4" BSF	1	—	N4/17
SP90/H13	. PIN, split	1	—	N4/18
EA3.33.219	. WASHER, special sealing	1	L40	N4/19
EB6.00.53	TAILPLANE TO REAR FUSELAGE, ATTACHMENT DETAILS Spares for :—	—	—	
EA3.30.75	. BOLT, special	2	S97	N4/20
EA1.12.451	. BOLT, special	1	S65	N4/21
A24PP	. NUT	2	L40	N4/22
EA1.12.453	. NUT, special	1	MS	N4/23
SP21	. NIPPLE, lubricating	2	—	N4/24
SP90E8	. PIN, split	3	—	N4/25
EA1.12.455	. WASHER, special	2	—	N4/26
EB6.00.61	PLATE TAILPLANE SEALING, ATTACHMENT DETAILS Spares for :—	—	—	
A33C16	. SCREW, 2BA	6	—	N4/27
A33C20	. SCREW, 2BA	20	—	N4/28
A33C24	. SCREW, 2BA	36	—	N4/29

MISCELLANEOUS
ATTACHMENT DETAILS

Part Number	Description	No. Off	Mati. Spec.	Plate No.
EB6.00.21	WING TO FUSELAGE, ATTACHMENT DETAILS, PORT (MOD 1018)	—	—	
EB6.00.22	WING TO FUSELAGE, ATTACHMENT DETAILS, STARBOARD (MOD 1018)	—	—	
EA3.20.135	. BLOCK, sealing Spares for :—	1	Linatex Rubber	N2/1
EA1.20.2897	. BLOCK, sealing	1	Linatex Rubber	N2/2
EA1.20.2899	. BLOCK, sealing	1	Linatex Rubber	N2/3
EA1.20.1101	. BOLT, main pick up	2	DTD473	N2/4
EA1.20.2277	. BOLT, special	2	DTD473	N2/5
A25/10C	. BOLT, 2BA	1	—	N2/6
A25/10N	. BOLT, ½" BSF (Pre. Alt. R60/112)	1	—	
A59/11N	. BOLT, ½" BSF (Alt. R60/112—Mod 5100)	1	—	N2/7
AGS1242/1C	. BOLT, 2BA (required for alt. gussets)	10	—	N2/8
A57/6P	. BOLT, shear	7	—	N2/9
EA3.11.5179	. BUSH (Alt. R60/112—Mod 5100)	1	—	N2/7A
EA1.11.129	. COLLAR, special	1	DTD126A	N2/10
EA3.20.573	. GUSSET, bottom, port	1	—	N2/11
EA9.20.1371	. GUSSET, bottom, port	1	—	N2/12
EA3.20.574	. GUSSET, bottom, starboard	1	—	
EA9.20.1372	. GUSSET, bottom, starboard	1	—	
EA3.20.575	. GUSSET, top, port	1	—	N2/13
EA9.20.1373	. GUSSET, top, port	1	—	N2/14
EA3.20.576	. GUSSET, top, starboard	1	—	
EA9.20.1374	. GUSSET, top, starboard	1	—	
A27CP	. NUT, 2BA	1	—	N2/15
A27NS	. NUT, ½" BSF	1	—	N2/16
A27SS	. NUT, ¾" BSF	2	—	N2/17
A27WS	. NUT, 1" BSF	2	—	N2/18
A27PS	. NUT, 9/16" BSF	7	—	N2/19
AGS2001C1/66	. NUT, 2BA	67	—	N2/20
AGS2002C1	. NUT, 2BA	1	—	N2/21
EA1.20.2275	. PAD, special	2	S11	N2/22
EA1.20.1337	. PIECE, filler, top	1	—	N2/22A
EA1.20.1347	. PIECE, filler, bottom	1	—	N2/22B
4C x 3/8"	Attaching parts for EA1.20.1337 and EA1.20.1347 :— . Screw, self-tapping, 3/8" long	AR	—	N2/22C
EA1.11.127	. PIN, special	1	S11	N2/23
SP90E8	. PIN, split	8	—	N2/24
SP90H14	. PIN, split	2	—	N2/25
SP90K18	. PIN, split	2	—	N2/26
EEAS1/1C	. SCREW	28	—	N2/27
EEAS1/1½C	. SCREW	407	—	N2/28
EEAS1/2C	. SCREW	8	—	N2/29
EEAS1/2½C	. SCREW	20	—	N2/30
EEAS1/4C	. SCREW	5	—	N2/31
EEAS1/3C	. SCREW	24	—	N2/32
EEAS1/3½C	. SCREW	32	—	N2/33
4C x 3/8"	. SCREW, self-tapping, 3/8" long	10	—	

MISCELLANEOUS
ATTACHMENT DETAILS

Part Number	Description 1 2 3 4 5 6	No. Off	Matl. Spec.	Plate No.
EA3.20.689	. STRIP, closing, upper, port (Supplied undrilled with trim allowance)	1	—	N2/34
EA3.20.690	. STRIP, closing, upper, starboard (Supplied undrilled with trim allowance)	1	—	
EA3.20.691	. STRIP, closing, lower, port (Supplied undrilled with trim allowance)	1	—	N2/35
EA3.20.692	. STRIP, closing, lower, starboard (Supplied undrilled with trim allowance)	1	—	
EA1.11.131	. WASHER, distance	1	L40	N2/36
EA1.20.1335	. WASHER, special	2	DTD390	N2/37
EA3.20.1401	. WASHER, special	2	Laminated Alum	N2/38
EEAS27/16GU	. WASHER	62	DTD124	N2/39
SP13C	. WASHER	1	—	N2/42
SP15P	. WASHER	7	—	N2/43
SP16N	. WASHER	1	—	
SP125N	. WASHER (Alt. R60/112—Mod 5100)	1	—	N2/44
AGS2036C	. WASHER (required for alt. gussets)	10	—	N2/45
SP15S	. WASHER	1	—	N2/46
SP55C	. WASHER, spring	38	—	N2/47

R

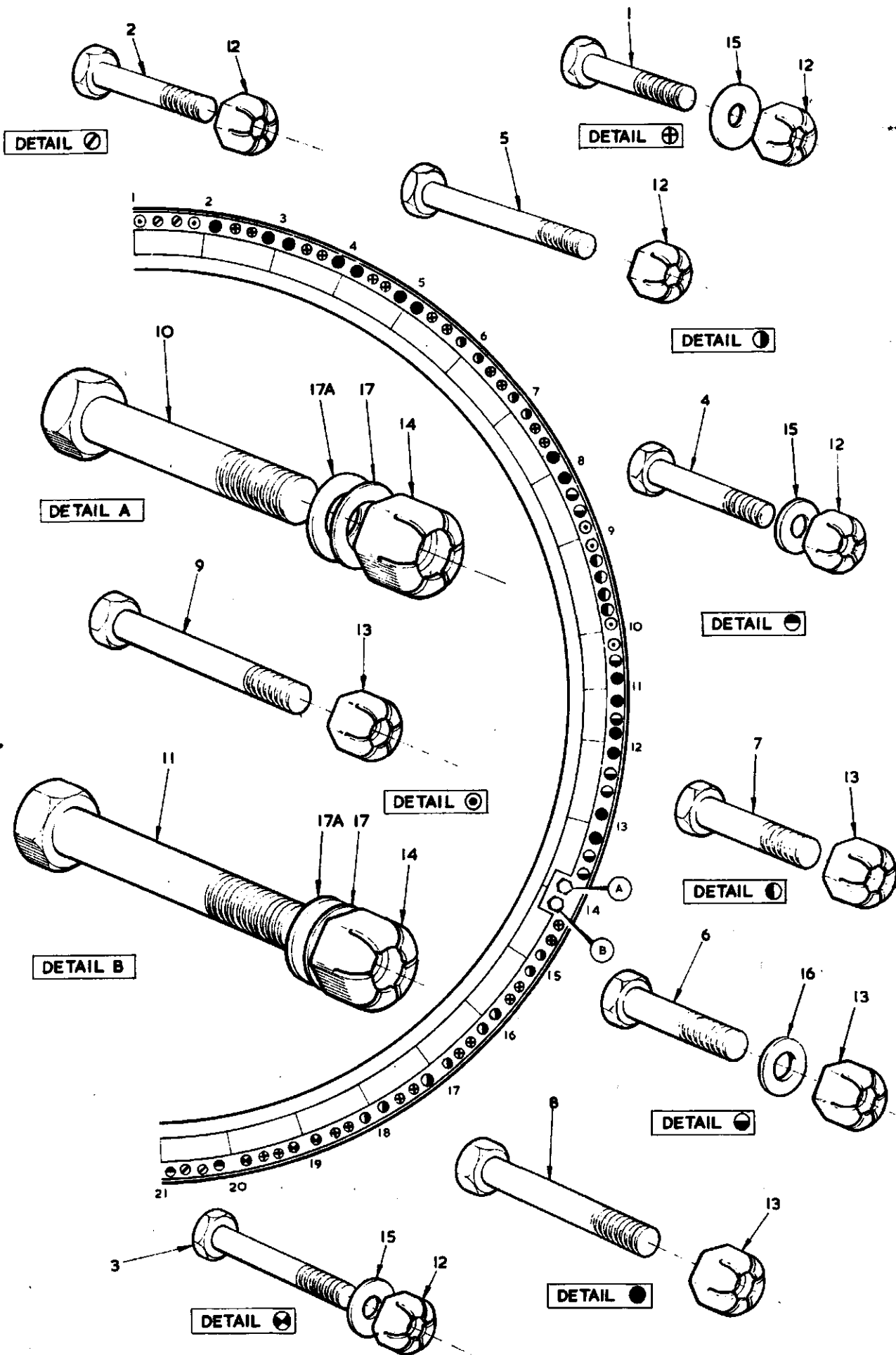


FIG.1 MISCELLANEOUS ATTACHMENT DETAILS

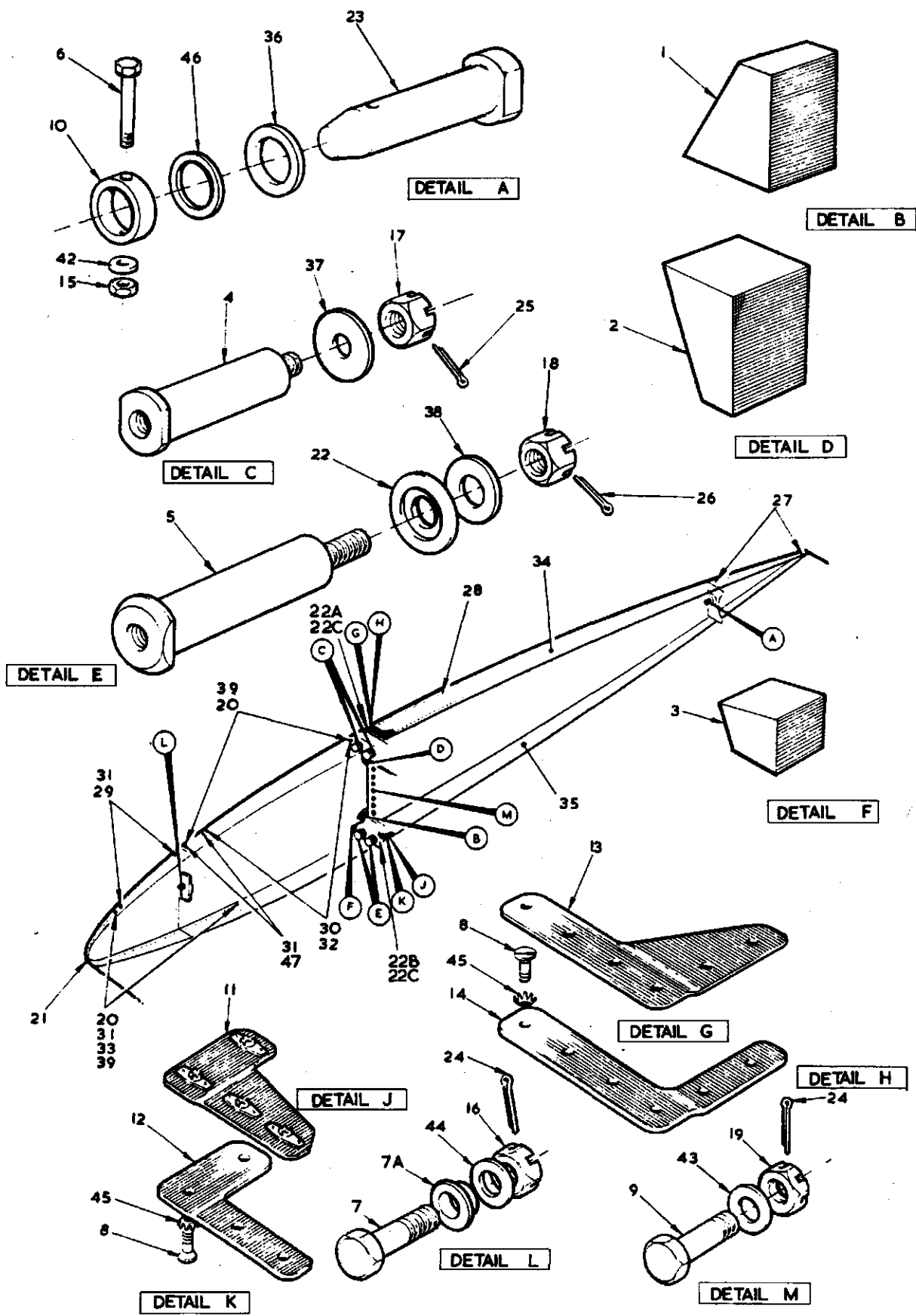


FIG. 2 MISCELLANEOUS ATTACHMENT DETAILS

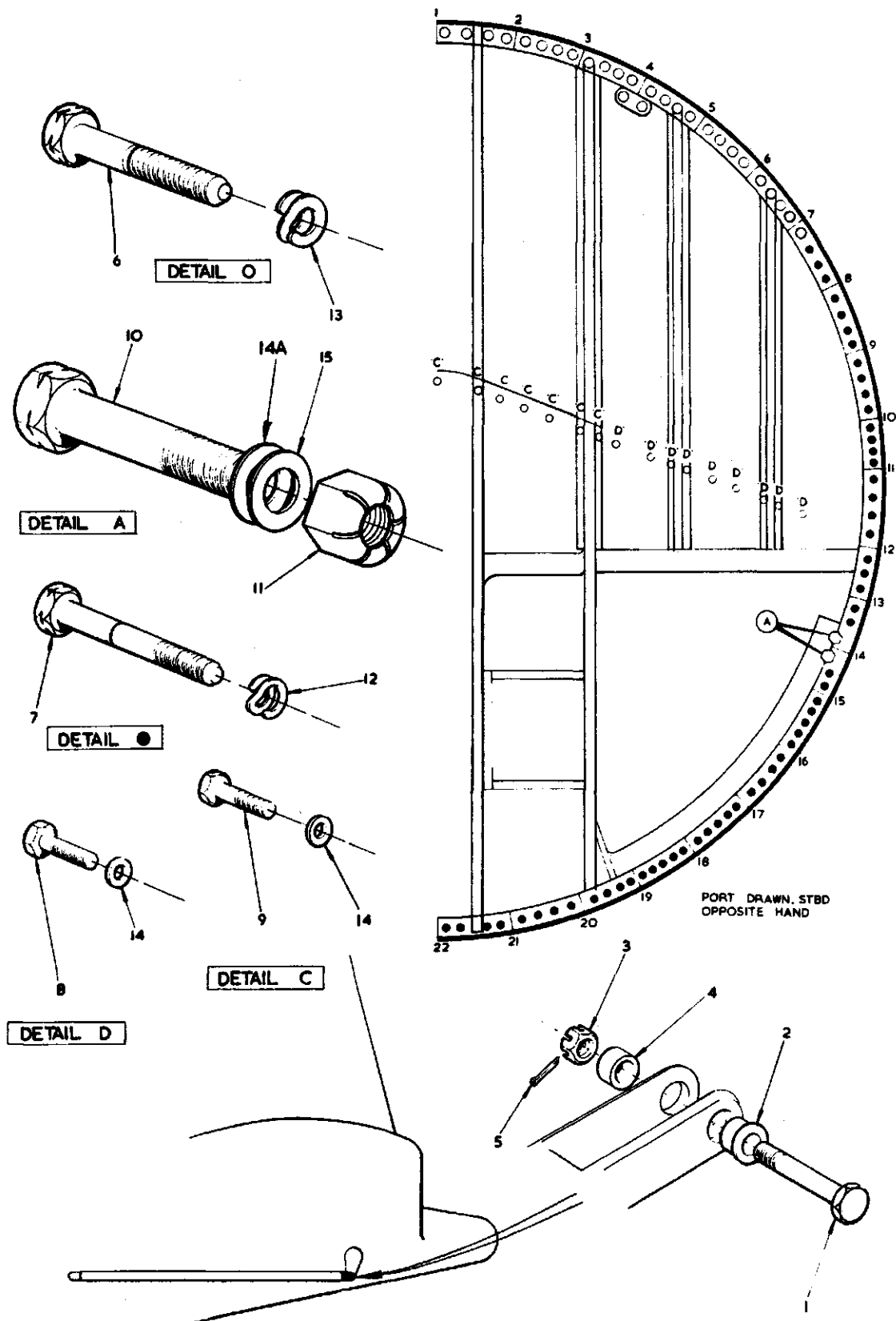


FIG. 3 MISCELLANEOUS ATTACHMENT DETAILS

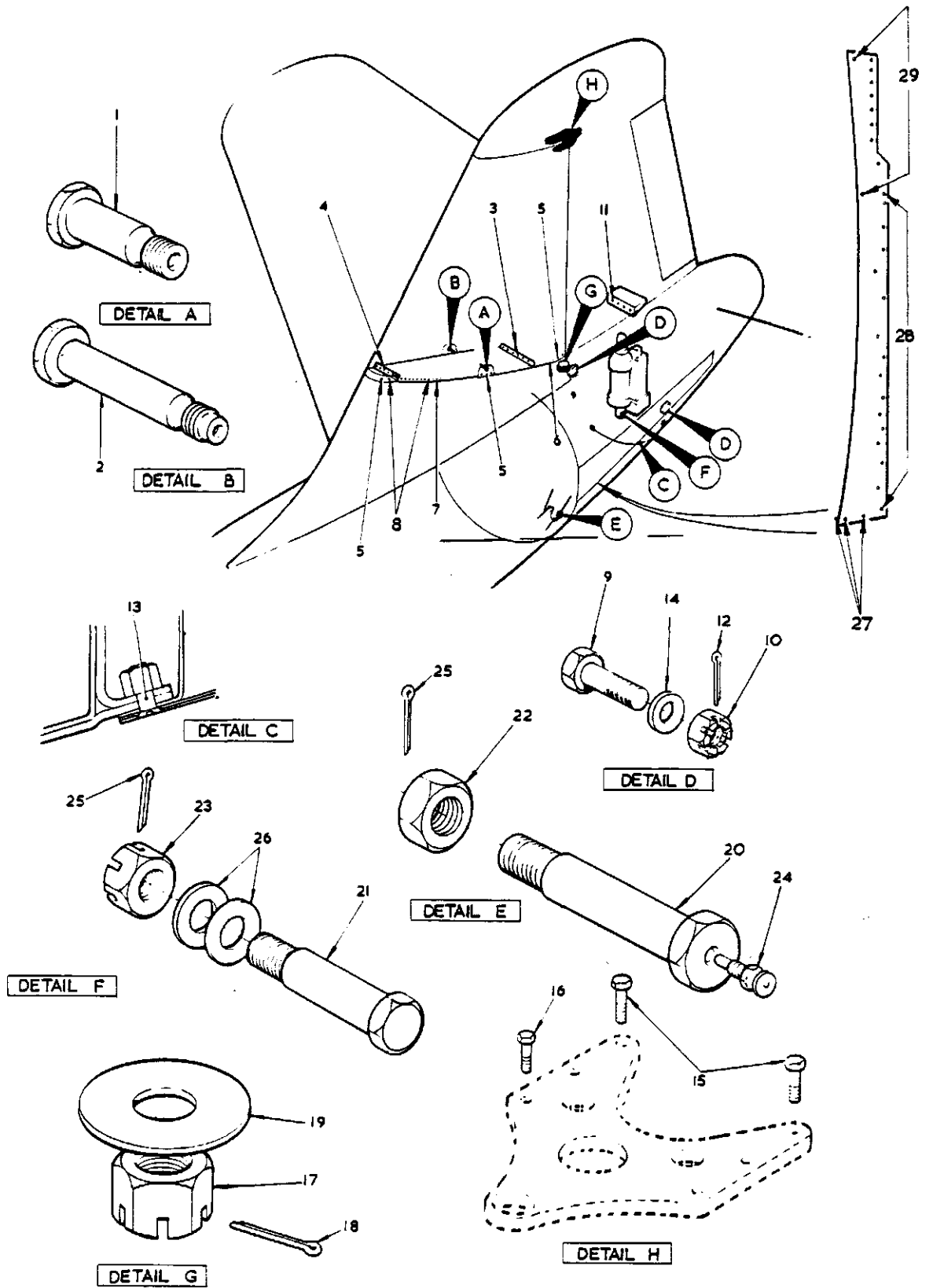


FIG. 4 MISCELLANEOUS ATTACHMENT DETAILS

MISCELLANEOUS
ATTACHMENT DETAILS

Ref. No.	Part No.	Description	No. off	Matl. Spec.	Cl. of Equip M.R. L.M.	Plate No.
	EB6.00.25	CENTRE TO REAR FUSELAGE, ATTACHMENT DETAILS ✓ Spares for:—	—	—	—	
28D/1008145	A25/6E	. BOLT, 1/4" BSF	48	—	C	N1/1
28D/1011242	A25/7E	. BOLT, 1/4" BSF	8	—	C	N1/2
28D/1011245	A25/10E	. BOLT, 1/4" BSF	6	—	C	N1/3
28D/1011246	A25/11E	. BOLT, 1/4" BSF	4	—	C	N1/4
28D/1011247	A25/13E	. BOLT, 1/4" BSF	24	—	C	N1/5
28D/7002427	A25/6G	. BOLT, 5/16" BSF	16	—	C	N1/6
28D/1011257	A25/7G	. BOLT, 5/16" BSF	8	—	C	N1/7
28D/1006942	A25/13G	. BOLT, 5/16" BSF	30	—	C	N1/8
28D/1011261	A25/15G	. BOLT, 5/16" BSF	12	—	C	N1/9
28D/9706828	A25/16N	. BOLT, 1/2" BSF	2	—	C	N1/10
28D/1011320	A25/18N	. BOLT, 1/2" BSF	2	—	C	N1/11
33H/2202125	—	. CEMENT	OR	—	C	
28M/9480017	AGS2001E1/66	. NUT, 1/4" BSF	90	—	C	N1/12
28M/4095807	AGS2001G1	. NUT, 5/16" BSF	66	—	C	N1/13
28M/9508679	AGS2001N1	. NUT, 1/2" BSF	4	—	C	N1/14
28W/9419405	SP15E	. WASHER	58	—	C	N1/15
28W/9419476	SP15G	. WASHER	16	—	C	N1/16
28W/9419479	SP15N	. WASHER	4	—	C	N1/17
5484	EA1.10.2713	. WASHER, special	4	—	C	N1/17A
	EA1.00.63	CONTROLS TO RUDDER AND ELEVATOR, ATTACHMENT DETAILS Spares for:—	—	—	—	
67	EEAS13/1	. BOLT, special	2	—	C	N3/1
68	EEAS14	. BUSH, bearing	2	—	C	N3/2
3569	EEAS63E	. NUT, slotted	2	S96	C	N3/3
3570	EEAS127	. PIECE, distance	2	S96	C	N3/4
28P/9527619	SP90C7	. PIN, split	2	—	C	N3/5
	EA1.00.55	FIN TO FUSELAGE, ATTACHMENT DETAILS ✓ Spares for:—	—	—	—	
313	EA1.32.75	. BOLT, special	1	DTD473	C	N4/1
314	EA1.32.77	. BOLT, special	1	DTD473	C	N4/2
28D/9436920	A25/1C	. BOLT, 2BA	10	—	C	N4/3
28D/9140644	A25/9C	. BOLT, 2BA	6	—	C	N4/4
28D/1007978	AS1242/1C	. BOLT, 2BA	18	—	C	N4/5
28D/1214090	AS1242/11/2C	. BOLT, 2BA	36	—	C	N4/6
1029	EEAS1/4C	. SCREW, 2BA	58	—	C	N4/7
1030	EEAS1/5C	. SCREW, 2BA	20	—	C	N4/8
	EA1.00.23	FRONT FUSELAGE TO CENTRE FUSELAGE, ATTACHMENT DETAILS ✓ Spares for:—	—	—	—	
392	EA1.10.1207	. BOLT, special	111	S.11	C	N3/6
393	EA1.10.1209	. BOLT, special	54	S11	C	N3/7
28D/9436920	A25/1C	. BOLT, 2BA	18	—	C	N3/8
28D/9133011	A25/2C	. BOLT, 2BA	15	—	C	N3/9
28D/1212783	A25/15N	. BOLT, 1/2" BSF 28D 9706895.	4	—	C	N3/10

MISCELLANEOUS
ATTACHMENT DETAILS

Ref. No.	Part No.	Description	No. off	Matl. Spec.	Cl. of Equip M.R. L.M.	Plate No.
33H/56	—	. CEMENT, bostik	QR	—	C	
28M/9508679	AGS.2001N1	. NUT, 1/2" BSF	4	—	C	N3/11
28W/9128188	SP55E	. WASHER, spring	111	—	C	N3/12
28W/7002438	SP55G	. WASHER, spring	54	—	C	N3/13
28W/9419475	SP15C	. WASHER	31	—	C	N3/14
28W/9419479	SP15N	. WASHER	4	—	C	N3/14A
5481	EA1.10.2713	. WASHER, special	4	—	C	N3/15
	EA1.00.59	REAR FAIRING TO FUSELAGE, ATTACHMENT DETAILS Spares for:—	—	—	—	
	A25/4E	. BOLT, 1/4" BSF	2	—	C	N4/9
28M/1008151	A27ES	. NUT, 1/4" BSF	2	—	C	N4/10
28M/1011467	AGS2001E1/66	. NUT, 1/4" BSF	4	—	C	N4/11
28M/9480017	SP90C7	. PIN, split	2	—	C	N4/12
28P/9527619	EEAS1/3C	. SCREW, 2BA	4	—	C	N4/13
1028	SP16E	. WASHER, 1/4"	2	—	C	N4/14
28W/9419487	EA1.00.57	RUDDER TO FIN AND FUSELAGE, ATTACHMENT DETAILS Spares for:—	—	—	—	
4730	EA1.32.203	. BOLT, special	2	S11	C	N4/15
4731	EA1.32.205	. BOLT, special	4	S11	C	N4/16
28M/13590	A27SS	. NUT, 3/4" BSF	1	—	C	N4/17
28P/9527619	SP90C7	. PIN, split	1	—	C	N4/18
3667	EA3.33.219	. WASHER, special sealing	1	L40	C	N4/19
	EB6.00.53	TAILPLANE TO REAR FUSELAGE, ATTACHMENT DETAILS Spares for:—	—	—	—	
2751	EA3.30.75	. BOLT, special	2	S97	C	N4/20
309	EA1.12.451	. BOLT, special	1	S65	C	N4/21
	A24PP	. NUT, special	2	L40	C	N4/22
311	EA1.12.453	. NUT, special	1	MS	C	N4/23
28N/9158370	SP21	. NIPPLE, lubricating	2	—	C	N4/24
28P/9560929	SP90E8	. PIN, split	3	—	C	N4/25
312	EA1.12.455	. WASHER, special	2	—	C	N4/26
	EB6.00.61	PLATE TAILPLANE SEALING, ATTACHMENT DETAILS Spares for:—	—	—	—	
28S/1200053	A33C16	. SCREW, 2BA	6	—	C	N4/27
28S/9435717	A33C20	. SCREW, 2BA	20	—	C	N4/28
28S/9435718	A33C24	. SCREW, 2BA	36	—	C	N4/29

This file was downloaded
from the RTFM Library.

Link: www.scottbouch.com/rtfm

Please see site for usage terms,
and more aircraft documents.

