

A.R.I. 5610, REBECCA 4, INSTALLATION

Part Number	Description	No. Off	Matl. Spec.	Plate No.
EG4.82.1071	A.R.I. 5610, REBECCA 4, INSTALLATION (SRIM.3533) (MOD 4799) (PRE-MOD 5195) Spares for :-	-	-	
R EB6.90.227	. AERIAL CAVITY, RE-CONVERSION (REBECCA) (NOT REQUIRED WHEN FLIGHT COMPUTER IS INSTALLED) Spares for :-	-	-	QC1/1
EB6.90.235	. . ANGLE	1	-	QC1/21
EB6.90.229	. . ANGLE, forward	1	-	QC1/22
A25/1B	. . BOLT, 4BA	89	-	QC1/23
EB6.90.237	. . DIAPHRAGM, centre	1	L72	QC1/24
AGS2001B1	. . NUT, 4BA	68	-	QC1/25
EB6.90.279	. . PACKING	1	-	QC1/26
EB6.90.233	. . PLATE, blanking, rear	1	-	QC1/27
EB6.90.231	. . PLATE, front	1	-	QC1/28
EB6.90.239	. . PLATE, top (Pre-Mod 3958)	1	-	QC1/29
EG4.90.221	. . PLATE, top, assembly (Mod 3958-S.O.O.)	1	-	QC1/30
EB6.90.281	. . PLUG, stowage	1	L72	QC1/31
AS2227/404	. . RIVET	4	-	QC1/32
AS2230/305	. . RIVET	4	-	QC1/33
SP13B	. . WASHER	68	-	QC1/34
EA3.90.81	. AERIAL, R.X., INSTALLATION, PORT	-	-	QC1/2
EA3.90.82	. AERIAL, R.X., INSTALLATION, STARBOARD Spares for :-	-	-	QC1/3
Type 144	. . ADAPTOR	1	-	QC1/4
EA3.90.77	. . BRACKET, ASSEMBLY	1	-	QC1/5
EA3.90.78	. . BRACKET	1	-	QC1/6
AGS2001C1/66	. . NUT, 2BA	1	-	QC1/7
AS2230/404	. . RIVET	3	-	
EEAS1/3½C	. . SCREW, 2BA	1	-	QC1/8
A31B8	. . SCREW, 4BA	4	-	QC1/9
EA3.90.137	. . STRIP, connecting	1	-	QC1/10
SP15C	. . WASHER	1	-	QC1/11
SP47B	. . WASHER, spring	4	-	QC1/12
EA3.90.129	. AERIAL, PROBE, T.X., INSTALLATION Consisting of :-	-	-	QC1/13
Z1841	. . GROMMET	1	-	QC1/14
10H18411	. . HOLDER, probe Attaching parts for Ref. No. 10H/18411 :-	1	-	QC1/15
A31B12	. . Screw, 4BA	4	-	QC1/16
EA3.90.127	. . TUBE, assembly, probe Attaching parts for EA3.90.127 :-	1	-	QC1/17
A55A2	. . Screw, 6BA	2	-	QC1/18
AS2295/3	. CLIP, aerial connector, port (EB6.90.1291)	2	-	QC1/19
10HA4698150	. CONNECTOR, Type 9321, orange, from pressure bulkhead to transmitter/receiver	2	-	QC1/20

RADAR

A.R.I. 5610, REBECCA 4, INSTALLATION

Part Number	1 2 3 4 5 6	Description	No. Off	Mati. Spec.	Plate No.
EA3.90.609	.	CONNECTOR, Type B15/20B/3, Red, from pressure bulkhead to transmitter/receiver	1	—	QC1/35
EA3.90.619	.	CONNECTOR, Type 3344/2, Blue, from transmitter aerial to pressure bulkhead	1	—	QC1/36
EA3.90.617	.	CONNECTOR, Type 3349/2, Blue, from pressure bulkhead to transmitter/receiver	1	—	QC1/37
EA3.90.623	.	CONNECTOR, Type 3344/4, Red, from socket Type XC.129 to pressure bulkhead, L.H.	1	—	QC1/38
EA3.90.629	.	CONNECTOR, Type 3344/5, Green, from socket Type XC.129 to pressure bulkhead, R.H.	1	—	QC1/39
EA3.90.633	.	CONNECTOR, Type 3351/5, Red, from switch unit to rear bomb bay bulkhead (Frame 29)	1	—	QC1/40
EA3.90.635	.	CONNECTOR, Type 3348/10, Red, from rear bomb bay bulkhead to access door break	1	—	QC1/41
EA3.90.637	.	CONNECTOR, Type 3348/11, Red, from access door break to bab's aerial	1	—	QC1/42
EA3.90.641	.	CONNECTOR, Type 3344/6, aerial slot, port, to socket, Type XC.129	1	—	QC1/43
EA3.90.643	.	CONNECTOR, Type 3344/7, aerial slot, starboard, to socket, Type XC.129	1	—	QC1/44
EA3.90.645	.	CONNECTOR, Type 3344/8, shorting socket to socket, Type XC.129, port and starboard	2	—	QC1/45
SCA78015/140	.	CONNECTOR, 21, from indicating unit to pressure bulkhead (SRIM.3533) (Mod 4799)	1	—	QC1/46
SCA78015/142	.	CONNECTOR, 22A, from control unit to pressure bulkhead (SRIM.3533) (Mod 4799)	1	—	QC1/47
SCA78015/144	.	CONNECTOR, 23A, from control unit to pressure bulkhead (SRIM.3533) (Mod 4799)	1	—	QC1/48
SCA78015/145	.	CONNECTOR, 22, from pressure bulkhead to transmitter/receiver (SRIM.3533) (Mod 4799)	1	—	QC1/49
SCA78015/146	.	CONNECTOR, 17, Red, from switch unit to transmitter/receiver (SRIM.3533) (Mod 4799)	1	—	QC1/50
SCA78015/147	.	CONNECTOR, 17A, Red, from pressure bulkhead to switch unit (SRIM.3533) (Mod 4799)	1	—	QC1/51
SCA78015/148	.	CONNECTOR, 18, Green, from switch unit to transmitter/receiver (SRIM.3533) (Mod 4799)	1	—	QC1/52
SCA78015/149	.	CONNECTOR, 18A, Green, from pressure bulkhead to switch unit (SRIM.3533) (Mod 4799)	1	—	QC1/53
SCA78015/150	.	CONNECTOR, 4, White, from switch unit to transmitter/receiver (SRIM.3533) (Mod 4799)	1	—	QC1/54
EG4.82.1109	.	EQUIPMENT AT NAVIGATOR'S STATION, INSTALLATION (MOD 4799) Consisting of :-	—	—	QC2/1
10LB4704226	.	UNIT, control, Type 526A Attaching parts for Ref. 10LB/4704226 :-	1	—	QC2/2
AS1246/1C	.	Bolt, 2BA	4	—	QC2/3
14A/4290001	.	Plate, wedge	1	—	QC2/4
SP13C	.	Washer	4	—	QC2/5

R

A.R.I. 5610, REBECCA 4, INSTALLATION

Part Number	Description	No. Off	Mati. Spec.	Plate No.
				1 2 3 4 5 6
EG4.82.1071	A.R.I. 5610, REBECCA 4, INSTALLATION (SRIM.3533) (MOD 4799) (PRE-MOD 5195) Spares for :-	-	-	QC1/1
EB6.90.227	. AERIAL CAVITY, RE-CONVERSION (REBECCA) (NOT REQUIRED WHEN FLIGHT COMPUTER IS INSTALLED) Spares for :-	-	-	
EB6.90.235	. . . ANGLE	1	-	QC1/21
EB6.90.229	. . . ANGLE, forward	1	-	QC1/22
A25/1B	. . . BOLT, 4BA	89	-	QC1/23
EB6.90.237	. . . DIAPHRAGM, centre	1	L72	QC1/24
AGS2001B1	. . . NUT, 4BA	68	-	QC1/25
EB6.90.279	. . . PACKING	1	-	QC1/26
EB6.90.233	. . . PLATE, blanking, rear	1	-	QC1/27
EB6.90.231	. . . PLATE, front	1	-	QC1/28
EB6.90.239	. . . PLATE, top (Pre-Mod 3958)	1	-	QC1/29
EG4.90.221	. . . PLATE, top, assembly (Mod 3958-S.O.O.)	1	-	QC1/30
EB6.90.281	. . . PLUG, stowage	1	L72	QC1/31
AS2227/404	. . . RIVET	4	-	QC1/32
AS2230/305	. . . RIVET	4	-	QC1/33
SP13B	. . . WASHER	68	-	QC1/34
EA3.90.81	. AERIAL, R.X., INSTALLATION, PORT	-	-	QC1/2
EA3.90.82	. AERIAL, R.X., INSTALLATION, STARBOARD Spares for :-	-	-	QC1/3
Type 144	. . . ADAPTOR	1	-	QC1/4
EA3.90.77	. . . BRACKET, ASSEMBLY	1	-	QC1/5
EA3.90.78	. . . BRACKET	1	-	QC1/6
AGS2001C1/66	. . . NUT, 2BA	1	-	QC1/7
AS2230/404	. . . RIVET	3	-	
EEAS1/3½C	. . . SCREW, 2BA	1	-	QC1/8
A31B8	. . . SCREW, 4BA	4	-	QC1/9
EA3.90.137	. . . STRIP, connecting	1	-	QC1/10
SP15C	. . . WASHER	1	-	QC1/11
SP47B	. . . WASHER, spring	4	-	QC1/12
EA3.90.129	. AERIAL, PROBE, T.X., INSTALLATION Consisting of :-	-	-	QC1/13
Z1841	. . . GROMMET	1	-	QC1/14
10H18411	. . . HOLDER, probe Attaching parts for Ref. No. 10H/18411 :-	1	-	QC1/15
A31B12	. . . Screw, 4BA	4	-	QC1/16
EA3.90.127	. . . TUBE, assembly, probe Attaching parts for EA3.90.127 :-	1	-	QC1/17
A55A2	. . . Screw, 6BA	2	-	QC1/18
AS2295/3	. CLIP, aerial connector, port (EB6.90.1291)	2	-	QC1/19
10HA4698150	. CONNECTOR, Type 9321, orange, from pressure bulkhead to transmitter/receiver	2	-	QC1/20

RADAR

A.R.I. 561D, REBECCA 4, INSTALLATION

Part Number	Description	No. Off	Matl. Spec.	Plate No.
EA3.90.609	. CONNECTOR, Type B 15/20B/3, Red, from pressure bulkhead to transmitter/receiver	1	-	QC1/35
EA3.90.619	. CONNECTOR, Type 3344/2, Blue, from transmitter aerial to pressure bulkhead	1	-	QC1/36
EA3.90.617	. CONNECTOR, Type 3349/2, Blue, from pressure bulkhead to transmitter/receiver	1	-	QC1/37
EA3.90.623	. CONNECTOR, Type 3344/4, Red, from socket Type XC.129 to pressure bulkhead, L.H.	1	-	QC1/38
EA3.90.629	. CONNECTOR, Type 3344/5, Green, from socket Type XC.129 to pressure bulkhead, R.H.	1	-	QC1/39
EA3.90.633	. CONNECTOR, Type 3351/5, Red, from switch unit to rear bomb bay bulkhead (Frame 29)	1	-	QC1/40
EA3.90.635	. CONNECTOR, Type 3348/10, Red, from rear bomb bay bulkhead to access door break	1	-	QC1/41
EA3.90.637	. CONNECTOR, Type 3348/11, Red, from access door break to babs aerial	1	-	QC1/42
EA3.90.641	. CONNECTOR, Type 3344/6, aerial slot, port, to socket, Type XC.129	1	-	QC1/43
EA3.90.643	. CONNECTOR, Type 3344/7, aerial slot, starboard, to socket, Type XC.129	1	-	QC1/44
EA3.90.645	. CONNECTOR, Type 3344/8, shorting socket to socket, Type XC.129, port and starboard	2	-	QC1/45
SCA78015/140	. CONNECTOR, 21, from indicating unit to pressure bulkhead (SRIM.3533) (Mod 4799)	1	-	QC1/46
SCA78015/142	. CONNECTOR, 22A, from control unit to pressure bulkhead (SRIM.3533) (Mod 4799)	1	-	QC1/47
SCA78015/144	. CONNECTOR, 23A, from control unit to pressure bulkhead (SRIM.3533) (Mod 4799)	1	-	QC1/48
SCA78015/145	. CONNECTOR, 22, from pressure bulkhead to transmitter/receiver (SRIM.3533) (Mod 4799)	1	-	QC1/49
SCA78015/146	. CONNECTOR, 17, Red, from switch unit to transmitter/receiver (SRIM.3533) (Mod 4799)	1	-	QC1/50
SCA78015/147	. CONNECTOR, 17A, Red, from pressure bulkhead to switch unit (SRIM.3533) (Mod 4799)	1	-	QC1/51
SCA78015/148	. CONNECTOR, 18, Green, from switch unit to transmitter/receiver (SRIM.3533) (Mod 4799)	1	-	QC1/52
SCA78015/149	. CONNECTOR, 18A, Green, from pressure bulkhead to switch unit (SRIM.3533) (Mod 4799)	1	-	QC1/53
SCA78015/150	. CONNECTOR, 4, White, from switch unit to transmitter/receiver (SRIM.3533) (Mod 4799)	1	-	QC1/54
EG4.82.1109	. EQUIPMENT AT NAVIGATOR'S STATION, INSTALLATION (MOD 4799) Consisting of :-	-	-	QC2/1
10LB4704226	. . UNIT, control, Type 526A Attaching parts for Ref. 10LB/4704226 :-	1	-	QC2/2
AS1246/1C	. . Bolt, 2BA	4	-	QC2/3
14A/4290001	. . Plate, wedge	1	-	QC2/4
SP13C	. . Washer	4	-	QC2/5

RADAR

A.R.I.5610, REBECCA 4, INSTALLATION

Part Number	Description	No. Off	Matl. Spec.	Plate No.
R 10QB/6130	. . UNIT, indicating, Type 208, on coaming panel Attaching parts for Ref. 10QB/6130:--	1	—	QC2/6
AS1246/2B	. . Bolt, 4BA	2	—	QC2/7
AS1246/7B	. . Bolt, 4BA	2	—	QC2/8
AGS2001B1	. . Nut, 4BA	4	—	QC2/9
SP15B	. . Washer	4	—	QC2/10
EG4.82.1111	. EQUIPMENT IN UPPER EQUIPMENT BAY INSTALLATION (MOD 4799) Spares for:--	—	—	QC2/11
R Type 814	. . MOUNTING, type 814	1	—	QC2/12
SCC9347	. . PLATE, mounting assembly, switch unit (SRIM.3533) (Mod 4799) Attaching parts for SCC79347:--	1	—	QC2/13
AGS2001C1/66	. . Nut, 2BA	8	—	QC2/14
A31C40	. . Screw, 2BA	8	—	QC2/15
SP13C	. . Washer	8	—	QC2/16
R 10FB/4682415	. . SWITCH-UNIT, type 78A Attaching parts for Ref. 10FB/4682415:--	1	—	QC2/17
A31C20	. . Screw, 2BA	2	—	QC2/18
Type 3624	. . TRANSMITTER/RECEIVER, type 3624	1	—	QC2/19
Type 212B	. . TRAY, mounting, type 212B Attaching parts for Type 212B:--	1	—	QC2/20
A25/1C	. . Bolt, 2BA	16	—	QC2/21
AGS2001C1/66	. . Nut, 2BA	16	—	QC2/22
SP13C	. . Washer	16	—	QC2/23
R 10H/4695484	. SOCKET, shorting	2	—	QC1/55
R 10H/0560063	. SOCKET, Type XC129	2	—	QC1/56

RADAR

A.R.I.5610, REBECCA 4, INSTALLATION

Ref. No.	Part No.	Description	No. off	Matl. Spec.	Cl. of Equip M.R. L.M.	Plate No.
10QB/6130	†	. . UNIT, indicating, Type 208, on coaming panel Attaching parts for Ref. 10QB/6130:—	1	—	A	QC2/6
28D/1214865	AS1246/2B	. . Bolt, 4BA	2	—	C	QC2/7
28D/1214869	AS1246/7B	. . Bolt, 4BA	2	—	C	QC2/8
28M/1278189	AGS2001B1	. . Nut, 4BA	4	—	C	QC2/9
28W/9419474	SP15B	. . Washer	4	—	C	QC2/10
	EG4.82.1111	. . EQUIPMENT IN UPPER EQUIPMENT BAY, INSTALLATION (MOD 4799) Spares for:—	—	—	—	QC2/11
	Type 814	. . MOUNTING, type 814	1	—	—	QC2/2
	SCC79347	. . PLATE, mounting assembly, switch unit (SRIM.3533) (Mod 4799) Attaching parts for SCC.79347:—	1	—	—	QC2/13
28M/1012015	AGS2001C1/66	. . Nut, 2BA	8	—	C	QC2/14
28S/1007753	A31C40	. . Screw 2BA	8	—	C	QC2/15
28W/9419402	SP13C	. . Washer	8	—	C	QC2/16
10FB/4682415	†	. . SWITCH-UNIT, type 78A Attaching parts for Ref. 10FB/4682415:—	1	—	A	QC2/17
28S/9435713	A31C20	. . Screw, 2BA	2	—	C	QC2/18
	Type 3624	. . TRANSMITTER/RECEIVER, type 3624	1	—	—	QC2/19
	Type 212B	. . TRAY, mounting, type 212B Attaching parts for Type 212B:—	1	—	—	QC2/20
28D/9436920	A25/1C	. . Bolt, 2BA	16	—	C	QC2/21
28M/1012015	AGS2001C1/66	. . Nut, 2BA	16	—	C	QC2/22
28W/9419402	SP13C	. . Washer	16	—	C	QC2/23
10H/4695484	†	. . SOCKET, shorting	2	—	—	QC2/24
10H/0560063	†	. . SOCKET, Type XC.129	2	—	C	QC2/25

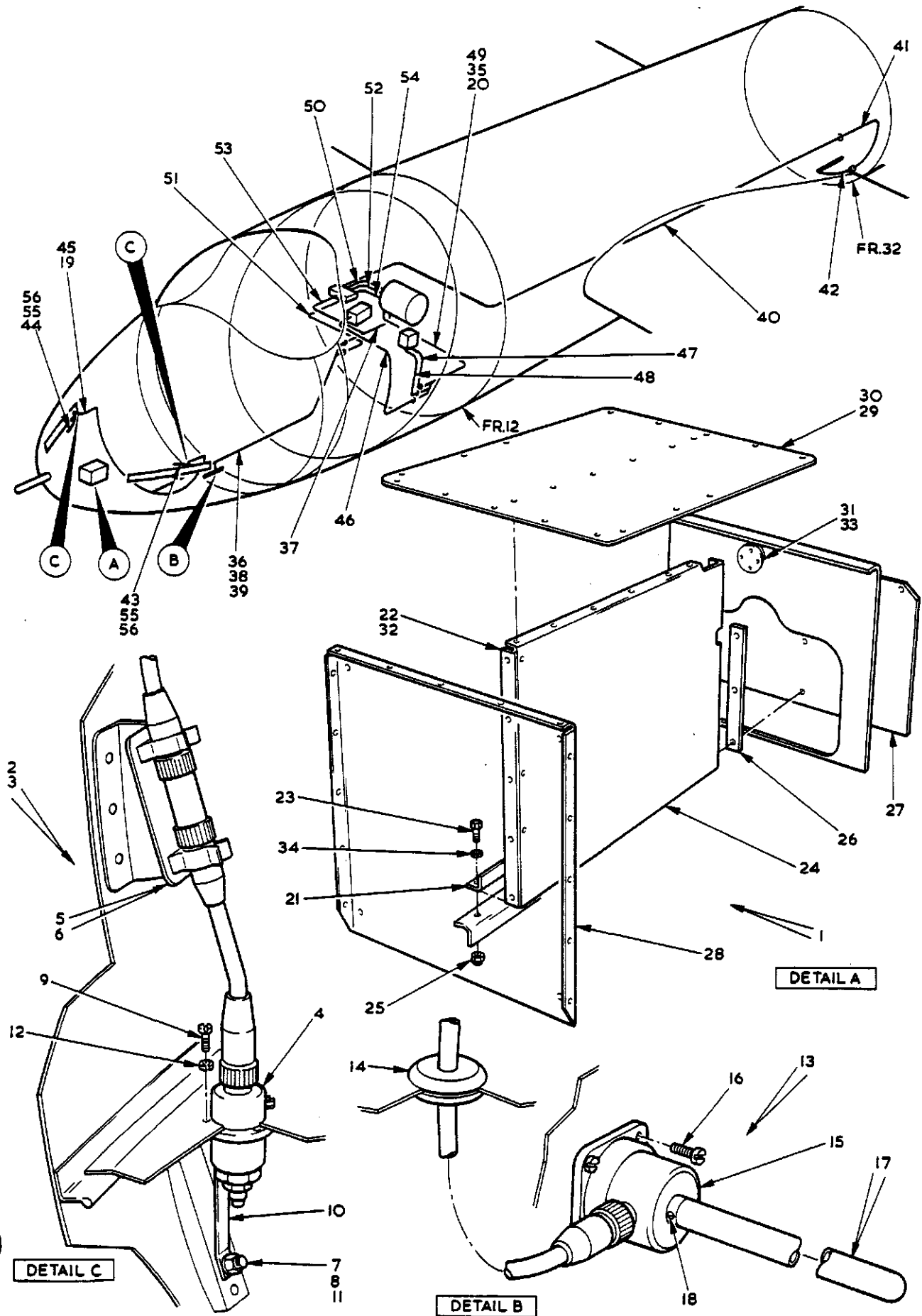
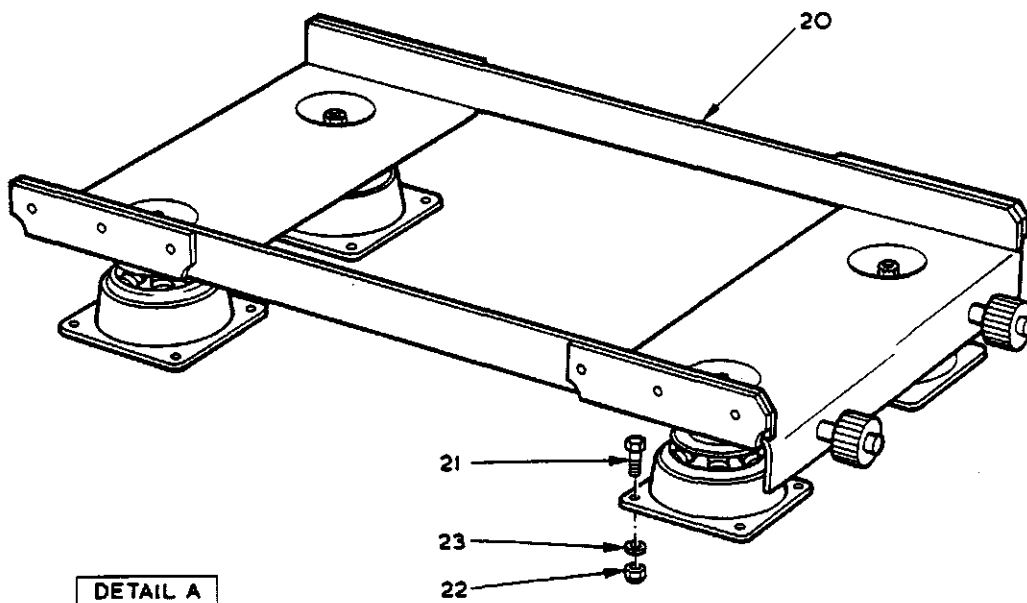
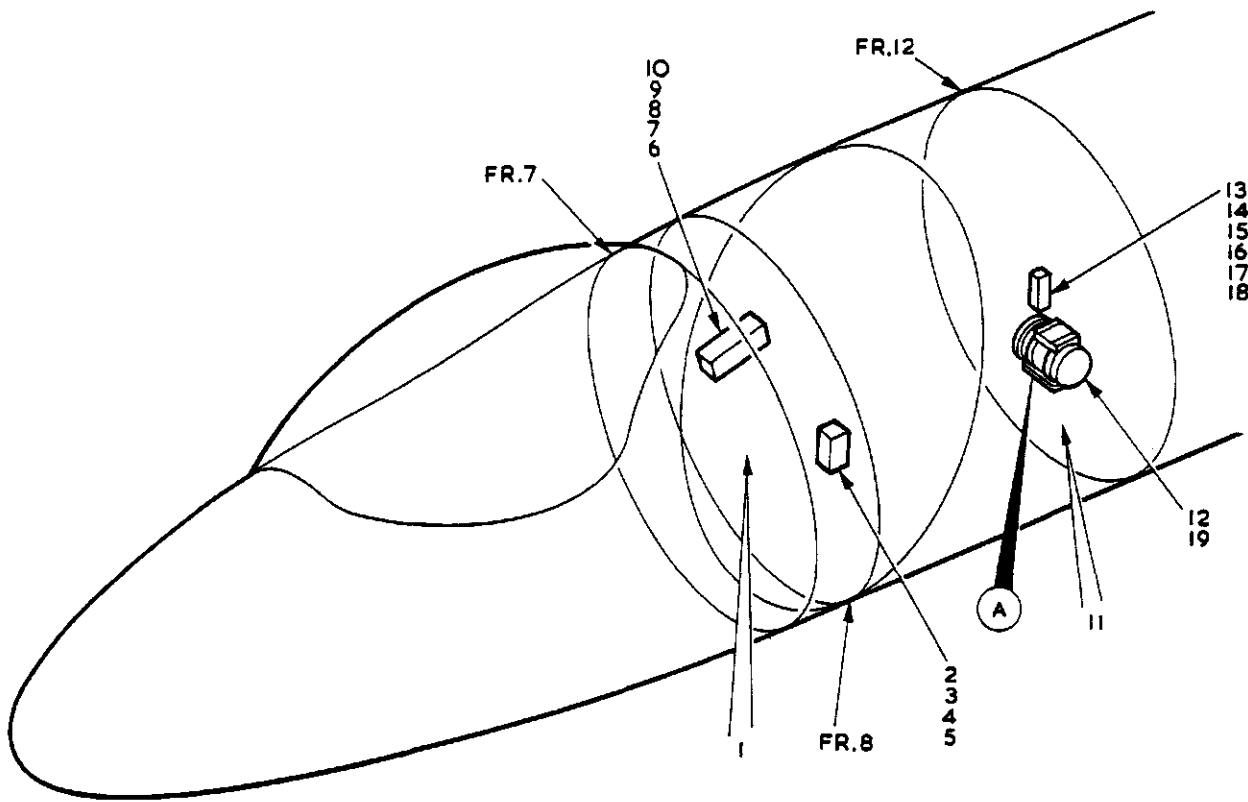


FIG. 1 RADAR, A.R.I.5610, REBECCA 4, INSTALLATION

CODE Z

SECT. QC



DETAIL A

FIG. 2 RADAR, A.R.I.5610, REBECCA 4, INSTALLATION
CODE Z

This file was downloaded
from the RTFM Library.

Link: www.scottbouch.com/rtfm

Please see site for usage terms,
and more aircraft documents.

