

Restricted

Issued with A.L. No. 11

April 1974

AIR PUBLICATION 101B-0415-3A

(Formerly A.P.4326P Vol. 3 Part 1)

JULY, 1962

1st EDITION

Canberra E. Mk. 15

Illustrated Parts Catalogue

INFORMATION IN THIS PUBLICATION IS THE PROPERTY OF THE GOVERNMENT. THE PUBLICATION IS CLASSIFIED RESTRICTED AND IS TO BE KEPT UNDER LOCK AND KEY WHEN NOT IN USE.

INFORMATION CONTAINED IN THIS PUBLICATION MAY BE SUBJECT TO PRIVATELY OWNED RIGHTS AND IS NOT TO BE RELEASED, REPRODUCED OR PUBLISHED.

MINISTRY OF DEFENCE

Restricted

MEMORANDUM OF INSTRUCTIONS**1. CONTENTS**

This Schedule contains a list of the Airframe Spare Parts embodied in Canberra E. Mk. 15 which have been allocated Vocabulary Section 26FZ.

2. DEMANDS

Units are to prepare their demands for spare parts strictly in accordance with A.P.830, Vol. 1. Demands for the parts required to make an airframe serviceable are invariably to quote the Mark of Aircraft. Units are to demand parts for this airframe under Vocabulary Section 26FZ except where the schedule states otherwise. Where the schedule states that a part is held under another Vocabulary Section the demand should quote that section after reference to the appropriate publication.

3. Unreferenced airframe items are not normally provisioned as spares. Demands for these items are to be submitted only when required to replace parts which have become unserviceable in use, or to meet anticipated requirements where previous consumption has been recorded. Such demands are to quote Maker's Part No.

4. Parts qualified by the symbol "LM" are to be manufactured by consumer units. If it is found that manufacture is beyond the capacity of the unit and that the requirement cannot be economically met by fitting an assembly bearing a reference number, then the unit should demand the part required under its part number and endorse demand "Unable to manufacture Locally".

5. When a Unit requires an unreferenced item which is beyond the Unit's capacity to manufacture or when a referenced part cannot be obtained, consideration should be given to fitting the assembly of which this item is a part, if that assembly bears a reference number.

6. Certain items are annotated "MR". These are normally provisioned for issue only to Units and Contractors authorised to undertake the major repair of Canberra E. Mk. 15 airframes.

7. MODIFICATIONS (CLASSES 1 or 2)

When an item is introduced by a modification the modification number is shown after the description of the item. Redundant items are deleted from the text.

8. MODIFICATIONS (CLASSES 3 and 4) AND AMENDMENTS

When an item is introduced by this authority the No. is shown after the description. Parts rendered redundant are not to be deleted from the publication, but the description of these items must include the additional words "(PRE MOD.)". New items added must include, in the description, the words "(MOD.)".

9. OBSOLESCENT STOCK

An asterisk (*) shown in the Part No. column of an item indicates that no further purchase of the item will be made but that stocks will be issued until they are exhausted.

10. NUMBERS OFF

The figure in the Number Off column indicates:—

- (a) The quantity required per airframe when the description is NOT indented.
- (b) The quantity required per assembly or sub-assembly when the description IS indented.

RESTRICTED

11. COMPILATION OF TEXT

The columns headed 1 to 6 are provided to indicate the breakdown of assemblies. Those items shown in column 2 are sub-assemblies or detail parts of the complete unit immediately preceding in column 1. Similarly, items in column 3 are further sub-assemblies or details assembled on items in column 2, etc.

All parts of an assembly are listed in alphabetical order in their respective columns. As an aid to ready identification, the description is given as fully as possible in the reverse order, e.g. PLATE, cover.

12. MAIN ASSEMBLY DRAWINGS

Where for description or identification purposes only a Main Assembly drawing is shown, that drawing number is shown in brackets at the end of the description.

13. PIPE LINES AND FLEXIBLE CABLES

Local manufacture of these items is intended wherever possible. Charts showing the various materials and parts required are included as appendices at the end of the schedule.

14. AMENDMENT LISTS

Amendments are to be correctly inserted and entered in the Amendment Certificate which is to be found in front of the schedule. Manuscript amendments are to be made in ink.

Amendment Lists are numbered consecutively and will be issued at regular intervals. This schedule is to be checked with the statement of Amendment Lists issued, which is published periodically by D.C.I.'s.

15. ASSOCIATED PUBLICATIONS

The following associated Schedules of Spare Parts for Airframe Accessory Equipment are to be used in conjunction with this schedule:—

A.P. 4515, B, C, F, R and S
Vol. 3, Part 1

16. CLASSIFICATION OF EQUIPMENT

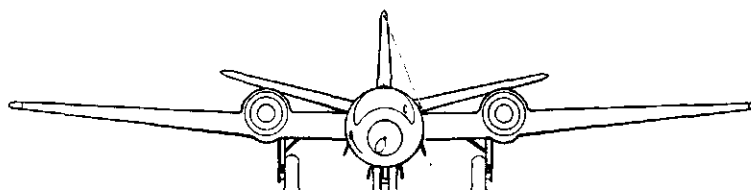
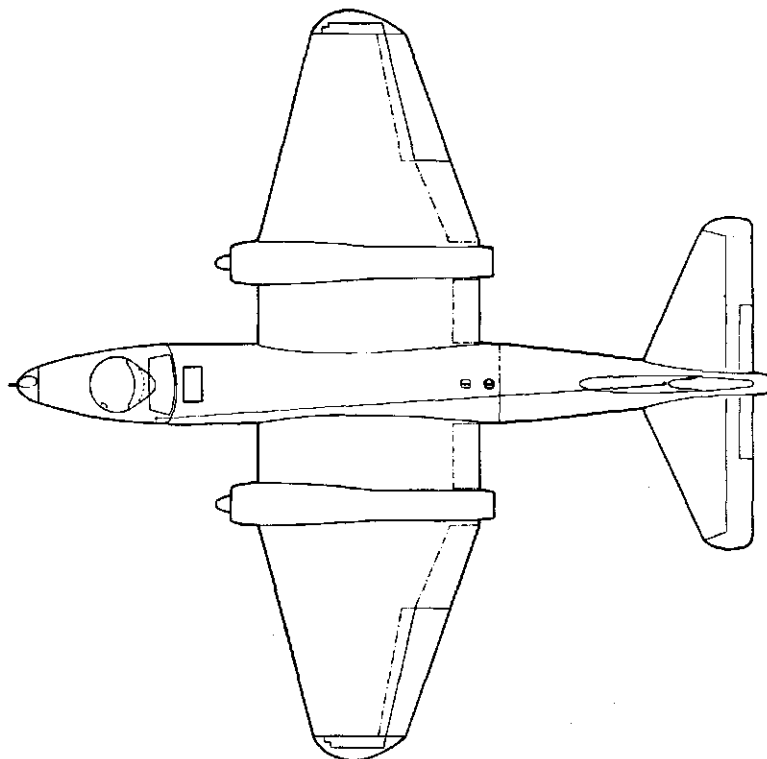
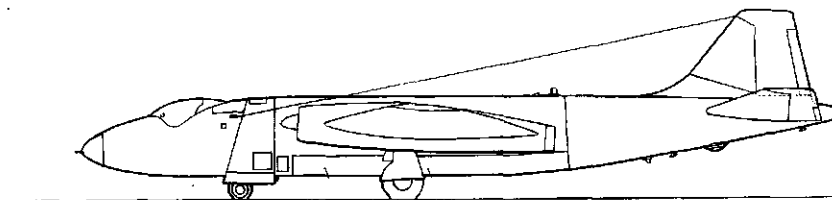
The letters denoting the Class of Store are defined as follows:—

CLASS "A"—Class "A" items are those items of equipment which remain on charge and cannot be replaced except on return to store. Repairable items which are beyond the capacity or authority of the unit to repair are to be returned to the appropriate Maintenance Unit categorised R/D.

CLASS "B"—Class "B" items are those items of equipment which remain on charge and cannot be replaced except on return to store. Items which are beyond the capacity of the unit to repair, or which for technical reasons are not capable of being repaired whatever the defect are to be disposed of locally by units.

CLASS "C"—Class "C" items are items of equipment other than Class "A" or "B" which are consumable in use, or are incapable of being economically repaired and are not of a nature which would necessitate detailed accounting as Class "A" or "B" equipment.

RESTRICTED



GENERAL ARRANGEMENT

DATA IS FOR PACKING AND STORAGE ONLY

DUTY: BOMBER

TYPE: TWIN-ENGINE MONOPLANE

AREAS :

MAIN PLANE, WITHAILERONS: 960 SQ.FT.
 AILERONS (2) TOTAL : 72 SQ.FT.
 TAIL PLANE, WITH ELEVATORS : 191 SQ.FT.
 ELEVATOR, INCLUDING HORN : 57 SQ.FT.
 ELEVATOR TRIM TABS : 55 SQ.FT.
 FIN : 33 SQ.FT.
 RUDDER : 31 SQ.FT.

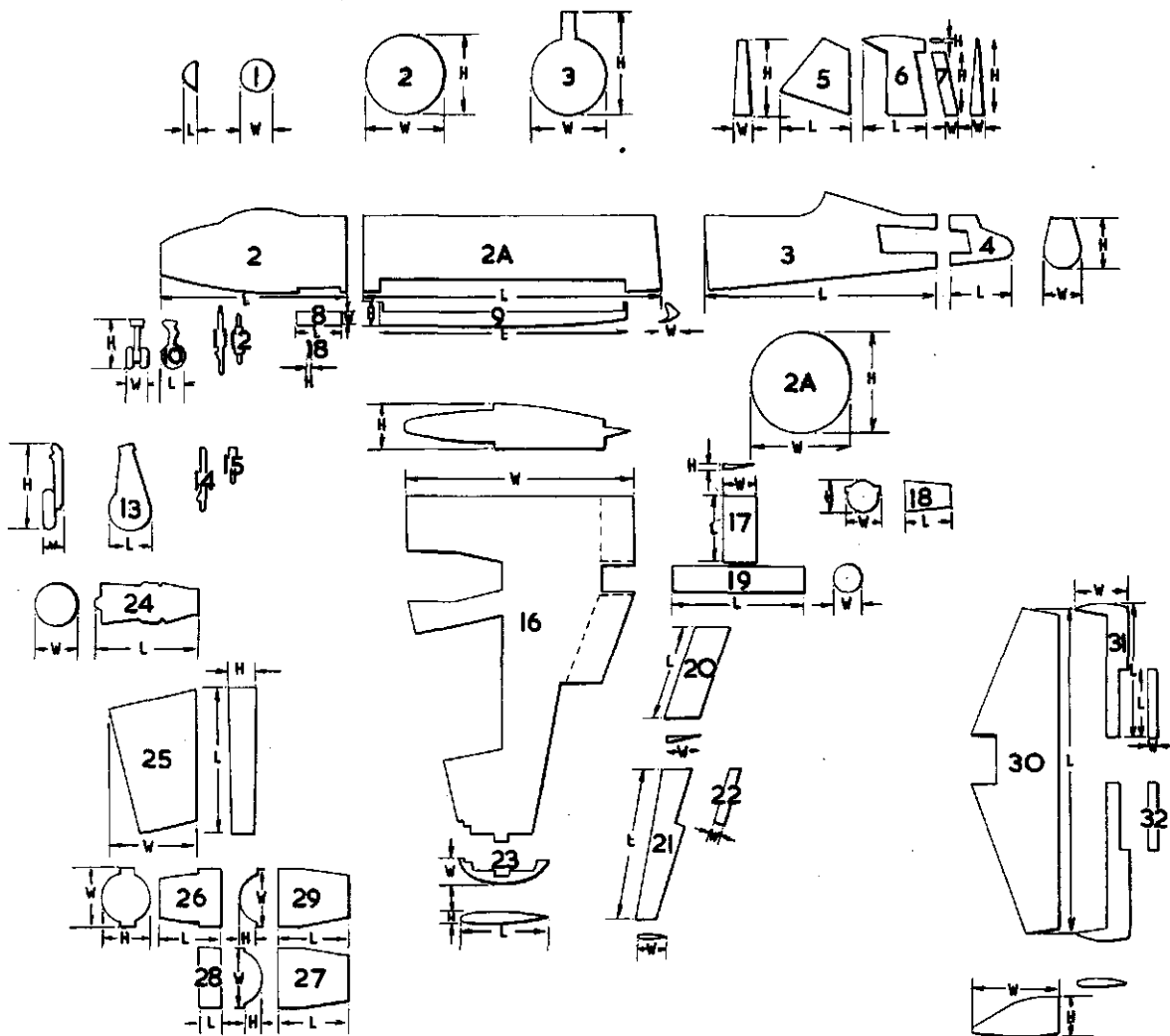
DIMENSIONS :

WING SPAN : 64 FT. 0 IN.
 OVERALL HEIGHT : 15 FT. 7 IN.
 OVERALL LENGTH : 65 FT. 6 IN.
 CHORD AT ROOT : 19 FT. 0 IN.
 CHORD AT TIP : 7 FT. 8 IN.
 MAINPLANE DIHEDRAL —
 INNER WING : 2 DEG.
 OUTER WING : 4 DEG. 21 MINS.
 INCIDENCE —
 MAINPLANE : 2 DEG.
 TAIL PLANE : -1 DEG. TO +2 DEG.
 22 MINS.
 TAIL PLANE DIHEDRAL : 10 DEG.

FUEL TANK CAPACITIES :

TANK No. 1 : 535 GALS.
 TANK No. 2 : 325 GALS.
 TANK No. 3 : 540 GALS.
 INTEGRAL TANK (2), EACH 450 GALS.
 WING TIP JETTISONABLE TANK (2),
 EACH 244 GALS.
 TOTAL FUEL CAPACITY : 2,788 GALS.

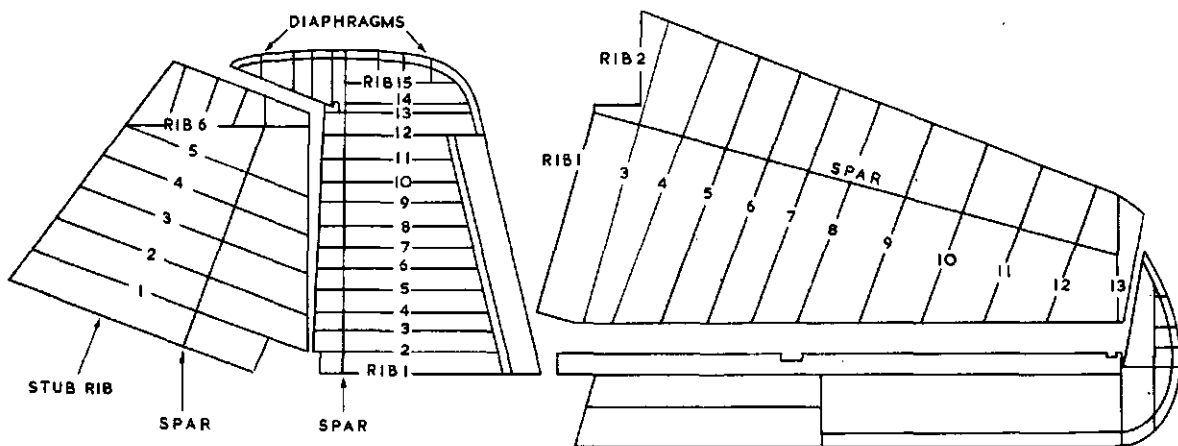
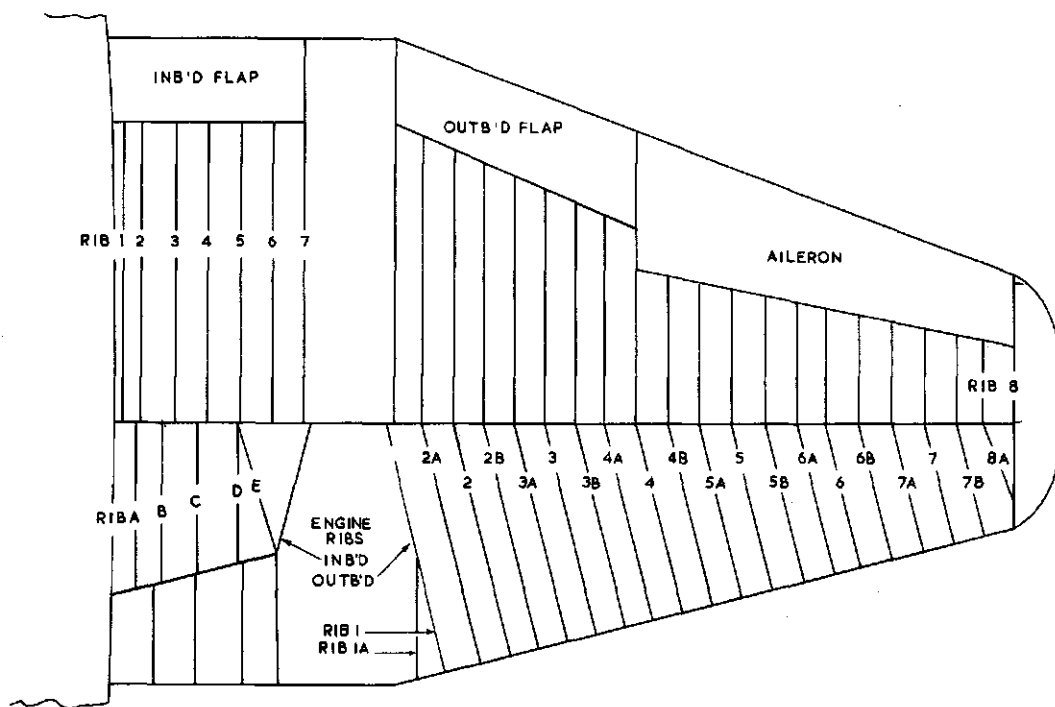
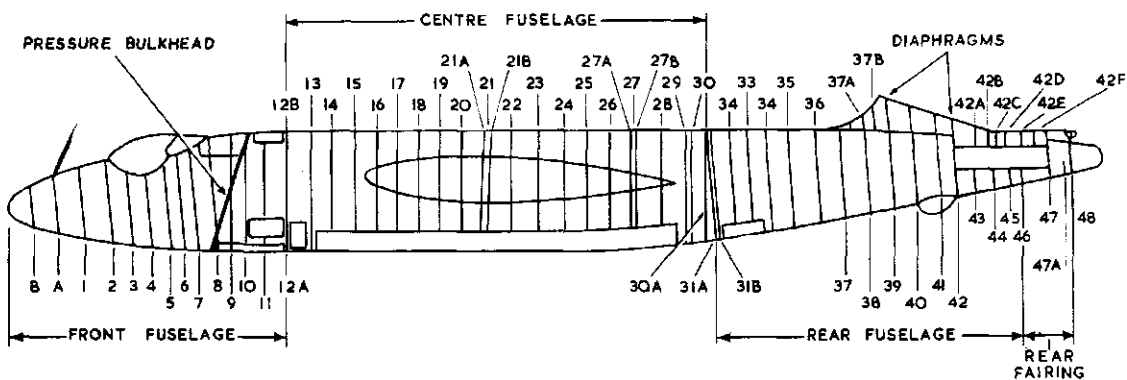
Plate B.



COMPONENT WEIGHTS AND DIMENSIONS

No	COMPONENT	LENGTH	WIDTH	HEIGHT	TARE WT. (LBS)	EOPD.WT. (LBS)	No	COMPONENT	LENGTH	WIDTH	HEIGHT	TARE WT. (LBS)	EOPD.WT. (LBS)
1	PERSPEX NOSE	1' 5"	DIA 2' 7"	—	39	—	18	JET-PIPE COWLING	3' 8"	2' 8"	2' 7"	21	—
2	FRONT FUSELAGE	15' 0"	6' 6"	—	953	3925	19	JET-PIPE	12' 3"	2' 2"	—	184	—
2A	CENTRE FUSELAGE	25' 11"	7' 7"	6' 6"	2370	3547	20	FLAP OUTBOARD	8' 11"	2' 9"	3"	31	—
3	REAR FUSELAGE	19' 1"	5' 10"	7' 11"	520	626	21	AILERON	12' 6"	1' 3"	9"	96	—
4	REAR CONE	4' 9"	2' 5"	2' 10"	25	—	22	AILERON TAB	4' 2"	8"	2"	3	—
5	FIN	6' 4"	1' 6"	6' 9"	94	—	23	WING TIP	1' 8"	7' 8"	10"	16	—
6	RUDDER	7' 1"	1' 3"	7' 0"	141	—	24	ENGINE	11' 0"	3' 6"	—	2460	—
7	RUDDER TAB	5' 5"	2"	9"	7	—	25	INTEGRAL TANK	11' 4"	6' 9"	2' 1/2"	426	—
8	NOSE U/C DOORS	4' 2"	1' 5"	3"	12	—	26	ENGINE FRONT COWLING	4' 9"	3' 10"	3' 10"	77	—
9	BOMB DOORS	22' 1"	1' 8"	3' 0"	240	—	27	ENGINE TOP REAR COWLING	5' 5"	2' 0"	1' 3"	22	—
10	NOSE U/C WHEELS AND LEG	2' 2"	1' 7"	3' 7"	228	—	28	ENGINE SERVICE PANEL	2' 2"	2' 0"	1' 9"	11	—
11	NOSE U/C RADIUS ROD	3' 11"	4"	8"	29	—	29	ENGINE BOTTOM REAR COWLING	5' 5"	2' 0"	1' 3"	30	—
12	NOSE U/C JACK	2' 2"	5"	6"	3	4	30	TAIL PLANE	26' 0"	7' 9"	1' 6"	493	—
13	MAIN U/C WHEEL AND LEG	3' 11"	2' 1"	6' 3"	691	—	16	ELEVATOR	31' 11"	4' 5"	5"	109 PORT 1045T BD	—
14	MAIN U/C SIDE STAY	2' 9"	8"	8"	36	—	31	ELEVATOR TAB	5' 7"	8"	2"	7	—
15	MAIN U/C JACK	1' 11"	4"	7"	14	—							
16	MAIN PLANE	29' 0"	19' 0"	4' 3"	2073	2980							
17	FLAP INBOARD	5' 7"	2' 6"	3"	22	—							

Plate C.



KEY DIAGRAM OF RIB AND FRAME POSITIONS

MODIFICATION AND AMENDMENT SHEET

(Armament)

Mod. No.	A.L. No.	Mod. No.	A.L. No.	Mod. No.	A.L. No.	Mod. No.	A.L. No.	Mod. No.	A.L. No.	Mod. No.	A.L. No.
1	NA	29		57							
2	NA	30	NA	58	9						
3	NA	31(A)	NA	59	9						
4	NA	32		60	9						
5	NA	33	‡	61							
6	NA	34	‡	62							
7	NA	35		63	8						
8	NA	36	‡	64							
9	C	37(A)	NA	65							
10	‡	38	NA	66							
11	NA	39	9	67							
12	NA	40(A)	NA	68							
13	‡	41	‡	69							
14	‡	42(A)	NA	70							
15	C	43		71							
16	NA	44	‡	72							
17	‡	45	/	73							
18(A)	NA	46(A)	NA	74							
19	NA	47		75							
20	NA	48		76							
21	NA	49		77							
22	‡	50		78							
23	‡	51		79							
24	‡	52		80							
25	‡	53		81							
26	‡	54	9	82							
27	NA	55		83							
28(A)	NA	56		84							

‡ Incorporated in initial issue of Schedule.
 NA Modification/Amendment not applicable to this Schedule.
 C Modification/Amendment cancelled.
 (A) Amendment.
 (M) Modification.

MODIFICATION AND AMENDMENT SHEET
(Airframe)

Mod. No.	A.L. No.	Mod. No.	A.L. No.	Mod. No.	A.L. No.	Mod. No.	A.L. No.	Mod. No.	A.L. No.	Mod. No.	A.L. No.
1	‡	57	‡	85	‡	160	C	188	‡	263	‡
2	‡	58	NA	86	‡	161	‡	189	‡	264	‡
3	‡	59	C	87	‡	162	‡	190	‡	265	‡
4	‡	60	NA	88	C	163	‡	191	NA	266	‡
5	NA	61	NA	89	‡	164	‡	192	C	267	‡
6	‡	62	‡	90	‡	165	‡	193	NA	268	‡
7	NA	63	‡	91	NA	166	C	194	NA	269	‡
8	‡	64	C	92	NA	167	‡	195	‡	270	‡
9	‡	65	‡	93	C	168	‡	196	‡	271	‡
10	‡	66	‡	94	C	169	‡	197	‡	272	‡
11	‡	67	‡	95	‡	170	‡	198	‡	273	NA
12	‡	68	‡	96	‡	171	‡	199	‡	274	C
13	‡	69	‡	97	‡	172	C	200(A)		275	‡
14	‡	70	C	98	‡	173	C	TO	NA	276	‡
15	‡	71	‡	99	‡	174	‡	249(A)		277	‡
16	‡	72	NA	100(A)		175	‡	250	‡	278	‡
17	C	73	‡	TO	NA	176	‡	251	‡	279	‡
18	‡	74	‡	149(A)		177	‡	252	‡	280	‡
19	‡	75	‡	150	‡	178	‡	253	NA	281	‡
20(A)		76	‡	151	C	179	C	254	C	282	‡
TO	NA	77	‡	152	‡	180	‡	255	‡	283	‡
50(A)		78	‡	153	‡	181	‡	256	‡	284	‡
51	‡	79	‡	154	‡	182	‡	257	‡	285	‡
52	C	80	‡	155	‡	183	‡	258	‡	286	‡
53	‡	81	‡	156	‡	184	‡	259	‡	287	C
54	‡	82	‡	157	‡	185	‡	260	‡	288	NA
55	‡	83	‡	158	C	186	‡	261	‡	289	NA
56	‡	84	‡	159	‡	187	‡	262	‡	290	NA

‡ Incorporated in initial issue of Schedule.
 NA Modification/Amendment not applicable to this Schedule.
 C Modification/Amendment cancelled.
 (A) Amendment.
 (M) Modification.

MODIFICATION AND AMENDMENT SHEET
(Airframe)

Mod. No.	A.L. No.	Mod. No.	A.L. No.	Mod. No.	A.L. No.	Mod. No.	A.L. No.	Mod. No.	A.L. No.	Mod. No.	A.L. No.
291	‡	319	‡	347	‡	422	‡	450	‡	525	NA
292	‡	320	‡	348	C	423	NA	451(A)	} NA	526	C
293	‡	321	‡	349	‡	424	‡	TO		527	NA
294	‡	322	‡	350(A)	} NA	425	C	500(A)	}	528	‡
295	‡	323	‡	TO		426	‡	501		‡	529
296	‡	324	‡	399(A)		427	‡	502	‡	530	‡
297	‡	325	‡	400	‡	428	‡	503	‡	531	‡
298	C	326	‡	401	‡	429	‡	504	‡	532	C
299	‡	327	NA	402	‡	430	‡	505	‡	533	‡
300	‡	328	‡	403	‡	431	C	506	‡	534	NA
301	‡	329	‡	404	‡	432	‡	507	‡	535	‡
302	‡	330	‡	405	‡	433	‡	508	‡	536	‡
303	‡	331	C	406	NA	434	‡	509	‡	537	‡
304		332	‡	407	‡	435	C	510	NA	538	‡
305	‡	333	‡	408	NA	436	C	511	‡	539	C
306	‡	334	‡	409	‡	437	‡	512	‡	540	‡
307	‡	335	‡	410	‡	438	‡	513	‡	541	‡
308	‡	336	NA	411	‡	439	‡	514	‡	542	‡
309	‡	337	‡	412	‡	440	‡	515	NA	543	‡
310	‡	338	C	413	NA	441	NA	516	NA	544	‡
311	‡	339	‡	414	‡	442	‡	517	NA	545	NA
312	‡	340	‡	415	‡	443	‡	518	C	546	‡
313	‡	341	‡	416	NA	444	‡	519	‡	547	‡
314	‡	342	NA	417	C	445	‡	520	NA	548	‡
315	‡	343	‡	418	‡	446	‡	521	NA	549	NA
316	‡	344	‡	419	‡	447	‡	522	C	550	‡
317	NA	345	‡	420	‡	448	C	523	‡		
318	‡	346	‡	421	‡	449	‡	524	C		

‡ Incorporated in initial issue of Schedule.
 NA Modification/Amendment not applicable to this Schedule.
 C Modification/Amendment cancelled.
 (A) Amendment.
 (M) Modification.

MODIFICATION AND AMENDMENT SHEET
(Airframe)

Mod. No.	A.L. No.	Mod. No.	A.L. No.	Mod. No.	A.L. No.	Mod. No.	A.L. No.	Mod. No.	A.L. No.	Mod. No.	A.L. No.
551(A)		626	‡	701	‡	730	‡	856	‡	884	NA
TO	NA	627	NA	702	NA	731	‡	857	‡	885	‡
600(A)		628	‡	703	C	732	NA	858	‡	886	‡
601	NA	629	NA	704	NA	733	‡	859	‡	887	‡
602	C	630	NA	705	C	734	NA	860	‡	888	NA
603	‡	631	‡	706	‡	735	‡	861	NA	889	NA
604	C	632	‡	707	NA	736	NA	862	‡	890	‡
605	NA	633	C	708	NA	737	NA	863	‡	891	NA
606	‡	634	C	709	NA	738	‡	864	‡	892	C
607	‡	635	NA	710	‡	739	‡	865	NA	893	
608	NA	636	‡	711	‡	740	‡	866	NA	894	‡
609	C	637	NA	712	NA	741	‡	867	NA	895	‡
610	NA	638	NA	713	‡	742	NA	868	‡	896	‡
611	‡	639	NA	714	NA	743	NA	869	‡	897	‡
612	‡	640	‡	715	‡	744	NA	870	NA	898	‡
613	NA	641	‡	716	‡	745	‡	871	NA	899	‡
614	C	642	‡	717	‡	746	C	872	NA	900	NA
615	C	643	‡	718	NA	747	NA	873	C	901(A)	
616	‡	644	‡	719	NA	748	NA	874	‡	TO	NA
617	‡	645	NA	720	‡	749	‡	875	‡	1000(A)	
618	‡	646	NA	721	‡	750	‡	876	‡	1001	‡
619	C	647	NA	723	NA	751(A)		877	‡	1002	‡
620	‡	648	‡	724	‡	TO	NA	878	‡	1003	‡
621	‡	649	‡	725	C	850(A)		879	C	1004	‡
622	‡	650	‡	726	NA	851	‡	880	‡	1005	NA
623	NA	651(A)		727	NA	852	‡	881	NA	1006	C
624	C	TO	NA	728	NA	853	‡	882	NA	1007	‡
625	NA	700(A)		729	NA	854	NA	883	NA	1008	‡

‡ Incorporated in initial issue of Schedule.
 NA Modification/Amendment not applicable to this Schedule.
 C Modification/Amendment cancelled.
 (A) Amendment.
 (M) Modification.

MODIFICATION AND AMENDMENT SHEET
(Airframe)

Mod. No.	A.L. No.	Mod. No.	A.L. No.	Mod. No.	A.L. No.	Mod. No.	A.L. No.	Mod. No.	A.L. No.	Mod. No.	A.L. No.
1009	‡	1037	C	1162	NA	1190	NA	1265	‡	1293	‡
1010	NA	1038	NA	1163	‡	1191	NA	1266	‡	1294	
1011	‡	1039	‡	1164	NA	1192	NA	1267	NA	1295	‡
1012	‡	1040	‡	1165	‡	1193	C	1268	NA	1296	‡
1013	‡	1041	NA	1166	C	1194	C	1269	C	1297	NA
1014	‡	1042	C	1167	C	1195	NA	1270	‡	1298	NA
1015	NA	1043	NA	1168	‡	1196	‡	1271	‡	1299	‡
1016	‡	1044	NA	1169	‡	1197	NA	1272	‡	1300	NA
1017	NA	1045	‡	1170	‡	1198	‡	1273	NA	1301(A)	
1018	‡	1046	NA	1171	‡	1199	‡	1274	NA	TO	NA
1019	NA	1047	‡	1172	NA	1200	NA	1275	NA	1400(A)	
1020	NA	1048	‡	1173	‡	1201(A)		1276	‡	1401	NA
1021	‡	1049	NA	1174	NA	TO	NA	1277	‡	1402	‡
1022	‡	1050	‡	1175	‡	1250(A)		1278	NA	1403	‡
1023	‡	1051(A)		1176	‡	1251	NA	1279	C	1404	NA
1024	‡	TO	NA	1177	NA	1252	NA	1280	‡	1405	‡
1025	NA	1150(A)		1178	NA	1253	NA	1281	NA	1406	NA
1026	NA	1151	‡	1179	NA	1254	‡	1282	NA	1407	‡
1027	NA	1152	‡	1180	NA	1255	‡	1283	NA	1408	NA
1028	NA	1153	C	1181	NA	1256	NA	1284	NA	1409	C
1029	‡	1154	C	1182	NA	1257	NA	1285	C	1410	C
1030	‡	1155	‡	1183	NA	1258	‡	1286	C	1411	NA
1031	C	1156	‡	1184	NA	1259	‡	1287	NA	1412	NA
1032	C	1157	NA	1185	NA	1260	NA	1288	NA	1413	‡
1033	‡	1158	NA	1186	NA	1261	NA	1289	NA	1414	NA
1034	NA	1159	‡	1187	NA	1262	NA	1290		1415	NA
1035	C	1160	‡	1188	NA	1263	‡	1291	‡	1416	NA
1036	‡	1161	NA	1189	‡	1264	NA	1292	‡	1417	NA

‡ Incorporated in initial issue of Schedule.
 NA Modification/Amendment not applicable to this Schedule.
 C Modification/Amendment cancelled.
 (A) Amendment.
 (M) Modification.

CANBERRA B. MK. 15

Page 7

MODIFICATION AND AMENDMENT SHEET
(Airframe)

Mod. No.	A.L. No.	Mod. No.	A.L. No.	Mod. No.	A.L. No.	Mod. No.	A.L. No.	Mod. No.	A.L. No.	Mod. No.	A.L. No.
1418	NA	1446	NA	1474	‡	1501(A)	} NA	1726	‡	1754	NA
1419	C	1447	‡	1475	C	TO		1727	NA	1755	NA
1420	‡	1448	C	1476	NA	1700(A)		1728	‡	1756	NA
1421	‡	1449	NA	1477	‡	1701	‡	1729	C	1757	NA
1422	NA	1450	‡	1478	‡	1702	‡	1730	‡	1758	NA
1423		1451	‡	1479	NA	1703	‡	1731	NA	1759	NA
1424		1452	‡	1480	NA	1704	NA	1732	NA	1760	NA
1425	‡	1453	‡	1481	NA	1705	‡	1733	NA	1761	NA
1426	‡	1454	‡	1482	‡	1706	NA	1734	‡	1762	NA
1427	NA	1455	C	1483	NA	1707	‡	1735	‡	1763	NA
1428	NA	1456	NA	1484	‡	1708	NA	1736	NA	1764	NA
1429	C	1457		1485	NA	1709	NA	1737	NA	1765	NA
1430	‡	1458	NA	1486	NA	1710	NA	1738	‡	1766	NA
1431	NA	1459	NA	1487	‡	1711	C	1739	‡	1767	NA
1432	‡	1460	‡	1488	NA	1712	‡	1740	‡	1768	NA
1433	‡	1461	NA	1489	NA	1713	‡	1741	NA	1769	7
1434	‡	1462	NA	1490	‡	1714	‡	1742	NA	1770	C
1435	‡	1463	‡	1491	‡	1715	‡	1743	‡	1771	‡
1436	NA	1464	‡	1492	NA	1716	‡	1744	NA	1772	NA
1437	NA	1465	‡	1493	‡	1717	C	1745	NA	1773	NA
1438	‡	1466	‡	1494		1718	C	1746	C	1774	NA
1439	NA	1467	NA	1495	NA	1719	C	1747	C	1775	C
1440	NA	1468	‡	1496	NA	1720	‡	1748	NA	1776	C
1441	‡	1469	‡	1497	‡	1721	‡	1749	C	1777	C
1442	‡	1470	NA	1498	‡	1722	NA	1750	NA	1778	‡
1443	NA	1471	‡	1499		1723	NA	1751	‡	1779	C
1444	‡	1472	NA	1500	‡	1724		1752	NA	1780	C
1445	NA	1473	‡			1725	NA	1753	NA	1781	‡

‡ Incorporated in initial issue of Schedule.
 NA Modification/Amendment not applicable to this Schedule.
 C Modification/Amendment cancelled.
 (A) Amendment.
 (M) Modification.

MODIFICATION AND AMENDMENT SHEET
(Airframe)

Mod. No.	A.L. No.	Mod. No.	A.L. No.	Mod. No.	A.L. No.	Mod. No.	A.L. No.	Mod. No.	A.L. No.	Mod. No.	A.L. No.
1801(A)	} NA	1926	NA	1954	‡	1982	NA	2107	NA	2135	NA
TO		1927	NA	1955	NA	1983	NA	2108	NA	2136	NA
1900(A)		1928	‡	1956	NA	1984	NA	2109	NA	2137	C
1901	‡	1929	‡	1957	NA	1985	‡	2110	NA	2138	C
1902	‡	1930	NA	1958	‡	1986	C	2111	C	2139	C
1903	NA	1931	NA	1959	C	1987	C	2112	C	2140	C
1904	NA	1932	‡	1960	‡	1988		2113	C	2141	C
1905	NA	1933	NA	1961	NA	1989	C	2114	‡	2142	NA
1906		1934	NA	1962	NA	1990	‡	2115	C	2143	NA
1792	NA	1917	NA	1945	‡	1973	‡	2001(A)	} NA	2126	‡
1793	NA	1918	NA	1946	NA	1974	NA	TO		2127	‡
1794	NA	1919	‡	1947	NA	1975	NA	2100(A)		2128	NA
1795	NA	1920	NA	1948	NA	1976	C	2101	C	2129	‡
1796	NA	1921	NA	1949	C	1977	NA	2102	NA	2130	C
1797	NA	1922	NA	1950	NA	1978	NA	2103	NA	2131	NA
1798	NA	1923	NA	1951	NA	1979	C	2104	NA	2132	‡
1799	NA	1924	NA	1952	NA	1980	NA	2105	NA	2133	NA
1800	C	1925	NA	1953	NA	1981	NA	2106	C	2134	‡
1782	‡	1907		1935	NA	1963	NA	1991	C	2116	C
1783	NA	1908		1936	NA	1964	NA	1992	‡	2117	C
1784	‡	1909	NA	1937	NA	1965	NA	1993	‡	2118	C
1785	C	1910	NA	1938	NA	1966	NA	1994	C	2119	C
1786	NA	1911	NA	1939	NA	1967	NA	1995	‡	2120	C
1787	NA	1912	‡	1940	‡	1968	NA	1996	NA	2121	‡
1788	NA	1913	NA	1941	C	1969	NA	1997	‡	2122	NA
1789	NA	1914	C	1942	C	1970	‡	1998	C	2123	NA
1790	NA	1915	NA	1943	C	1971	NA	1999	‡	2124	C
1791	NA	1916	NA	1944	‡	1972	C	2000	NA	2125	‡

‡ Incorporated in initial issue of Schedule.
 NA Modification/Amendment not applicable to this Schedule.
 C Modification/Amendment cancelled.
 (A) Amendment.
 (M) Modification.

MODIFICATION AND AMENDMENT SHEET
(Airframe)

Mod. No.	A.L. No.	Mod. No.	A.L. No.	Mod. No.	A.L. No.	Mod. No.	A.L. No.	Mod. No.	A.L. No.	Mod. No.	A.L. No.
2144	NA	2172	NA	2200	‡	2325	NA	2353		2381	C
2145	C	2173	NA	2201(A)		2326	NA	2354	C	2382	C
2146	NA	2174	NA	TO	NA	2327	NA	2355	‡	2383	NA
2147	‡	2175	C	2300(A)		2328	C	2356	NA	2384	NA
2148	‡	2176	‡	2301	NA	2329	‡	2357	C	2385	NA
2149	NA	2177	NA	2302	‡	2330	NA	2358	‡	2386	‡
2150	‡	2178	NA	2303	NA	2331	NA	2359	NA	2387	C
2151	‡	2179	NA	2304	NA	2332	NA	2360	NA	2388	NA
2152	C	2180	NA	2305	NA	2333	NA	2361	‡	2389	NA
2153	C	2181	NA	2306	‡	2334	‡	2362	NA	2390	NA
2154	‡	2182	‡	2307	C	2335	‡	2363	NA	2391	‡
2155	NA	2183	‡	2308	‡	2336	NA	2364	‡	2392	NA
2156	‡	2184	NA	2309	NA	2337	NA	2365	C	2393	‡
2157	C	2185	C	2310	NA	2338	NA	2366	NA	2394	‡
2158	‡	2186	‡	2311	‡	2339	NA	2367	NA	2395	‡
2159	NA	2187	‡	2312	NA	2340	‡	2368	NA	2396	‡
2160	NA	2188	C	2313	C	2341	NA	2369	‡	2397	NA
2161	NA	2189	C	2314	C	2342	NA	2370	NA	2398	‡
2162	C	2190	C	2315	‡	2343	C	2371	NA	2399	NA
2163	C	2191	NA	2316	‡	2344	C	2372	NA	2400	NA
2164	C	2192	NA	2317	NA	2345	C	2373	NA	2401(A)	
2165	C	2193	‡	2318	NA	2346	C	2374	NA	TO	NA
2166	NA	2194	NA	2319	NA	2347	NA	2375		2500(A)	
2167	NA	2195	NA	2320	‡	2348	‡	2376	NA	2501	‡
2168	NA	2196	NA	2321	NA	2349	C	2377	NA	2502	‡
2169	C	2197	‡	2322	NA	2350	NA	2378	NA	2503	‡
2170	NA	2198	‡	2323		2351	C	2379	‡	2504	NA
2171	NA	2199	‡	2324	NA	2352	NA	2380	‡	2505	NA

‡ Incorporated in initial issue of Schedule.
 NA Modification/Amendment not applicable to this Schedule.
 C Modification/Amendment cancelled.
 (A) Amendment.
 (M) Modification.

MODIFICATION AND AMENDMENT SHEET
(Airframe)

Mod. No.	A.L. No.	Mod. No.	A.L. No.	Mod. No.	A.L. No.	Mod. No.	A.L. No.	Mod. No.	A.L. No.	Mod. No.	A.L. No.
2506	NA	2534	‡	2562	NA	2590	‡	2618	C	2646	‡
2507	NA	2535	‡	2563	NA	2591	C	2619	NA	2647	NA
2508	‡	2536	‡	2564	‡	2592	‡	2620	NA	2648	NA
2509	C	2537	NA	2565	NA	2593	‡	2621	‡	2649	NA
2510	C	2538	‡	2566	NA	2594	‡	2622	NA	2650	NA
2511		2539	NA	2567	NA	2595	‡	2623	NA	2651	
2512	‡	2540	‡	2568	NA	2596		2624	NA	2652	NA
2513	C	2541	‡	2569	NA	2597	C	2625	NA	2653	NA
2514	C	2542	NA	2570	C	2598	C	2626	‡	2654	NA
2515	NA	2543	C	2571	NA	2599	‡	2627	‡	2655	NA
2516	‡	2544	‡	2572	‡	2600		2628	NA	2656	NA
2517	‡	2545	‡	2573	NA	2601	NA	2629	‡	2657	C
2518	NA	2546		2574	C	2602	NA	2630	NA	2658	C
2519	C	2547	C	2575	NA	2603	NA	2631	C	2659	‡
2520	C	2548	NA	2576	NA	2604	NA	2632	C	2660	NA
2521	C	2549	NA	2577	NA	2605	‡	2633	‡	2661	NA
2522	C	2550	‡	2578		2606	NA	2634	‡	2662	NA
2523	NA	2551	NA	2579	NA	2607	C	2635		2663	NA
2524	C	2552	NA	2580	‡	2608	C	2636	C	2664	NA
2525	NA	2553	NA	2581	C	2609	C	2637	C	2665	C
2526	NA	2554	C	2582	C	2610	C	2638	C	2666	C
2527		2555	NA	2583	NA	2611	‡	2639	‡	2667	NA
2528	NA	2556	NA	2584	NA	2612	NA	2640	C	2668	NA
2529	C	2557	NA	2585	‡	2613	‡	2641	NA	2669	NA
2530	‡	2558	NA	2586	NA	2614		2642	NA	2670	
2531	‡	2559	NA	2587	‡	2615	‡	2643	‡	2671	‡
2532	‡	2560	NA	2588	‡	2616	C	2644	NA	2672	NA
2533	‡	2561	‡	2589	NA	2617	C	2645	‡	2673	NA

‡ Incorporated in initial issue of Schedule.
 NA Modification/Amendment not applicable to this Schedule.
 C Modification/Amendment cancelled.
 (A) Amendment.
 (M) Modification.

MODIFICATION AND AMENDMENT SHEET
(Airframe)

Mod. No.	A.L. No.	Mod. No.	A.L. No.	Mod. No.	A.L. No.	Mod. No.	A.L. No.	Mod. No.	A.L. No.	Mod. No.	A.L. No.
2674	NA	2702	NA	2730	NA	2901		3160		3206	NA
2675	C	2703	‡	2731	NA	TO	NA	TO	NA	3207	C
2676	NA	2704	‡	2732	NA	3135		3180		3208	C
2677	‡	2705	‡	2733	NA	3136	‡	3181	NA	3209	‡
2678	‡	2706	NA	2734	NA	3137	‡	3182	NA	3210	NA
2679	C	2707	NA	2735	NA	3138	‡	3183	NA	3211	‡
2680	NA	2708	NA	2736	NA	3139	‡	3184	C	3212	
2681	NA	2709	NA	2737	NA	3140	C	3185	‡	3213	NA
2682	‡	2710	NA	2738	NA	3141	‡	3186	NA	3214	C
2683	NA	2711	NA	2739	NA	3142	‡	3187	NA	3215	NA
2684	NA	2712	NA	2740	‡	3143	‡	3188	NA	3216	NA
2685	6	2713	NA	2741	C	3144	‡	3189	NA	3217	NA
2686	NA	2714	C	2742	NA	3145	‡	3190	NA	3218	NA
2687	NA	2715	NA	2743	NA	3146	‡	3191	C	3219	NA
2688	NA	2716	NA	2744	NA	3147	‡	3192	NA	3220	NA
2689	‡	2717	NA	2745	C	3148	‡	3193	NA	3221	‡
2690	/	2718	NA	2746	C	3149	C	3194		3222	‡
2691	C	2719	C	2747	C	3150	‡	3195		3223	‡
2692	‡	2720	‡	2748	C	3151	NA	3196	C	3224	‡
2693	‡	2721	‡	2749	C	3152	NA	3197	NA	3225	‡
2694	NA	2722	NA	2750	C	3153	NA	3198	NA	3226	C
2695	NA	2723	‡	2751		3154	‡	3199	‡	3227	NA
2696	NA	2724	C	TO	NA	3155	NA	3200	NA	3228	NA
2697	NA	2725	NA	2800		3156	9	3201	C	3229	‡
2698	NA	2726	NA	2801(A)		3157	NA	3202	NA	3230	NA
2699	NA	2727	NA	TO	NA	3158	‡	3203	NA	3231	NA
2700	C	2728	NA	2900(A)		3159	NA	3204	C	3232	‡
2701	‡	2729	NA					3205	NA	3233	‡

‡ Incorporated in initial issue of Schedule.
 NA Modification/Amendment not applicable to this Schedule.
 C Modification/Amendment cancelled.
 (A) Amendment.
 (M) Modification.

**MODIFICATION AND AMENDMENT SHEET
(Airframe)**

Mod. No.	A.L. No.	Mod. No.	A.L. No.	Mod. No.	A.L. No.	Mod. No.	A.L. No.	Mod. No.	A.L. No.	Mod. No.	A.L. No.
3234	NA	3262	NA	3290	‡	3318	NA	3346	NA	3374	NA
3235	NA	3263	NA	3291	C	3319	6	3347	NA	3375	C
3236	‡	3264	NA	3292	NA	3320	NA	3348	NA	3376	C
3237	NA	3265	NA	3293	NA	3321	NA	3349	NA	3377	NA
3238	‡	3266	NA	3294	NA	3322	NA	3350	NA	3378	NA
3239	NA	3267	NA	3295	‡	3323	NA	3351	NA	3379	NA
3240	NA	3268	NA	3296	NA	3324	NA	3352	NA	3380	‡
3241	NA	3269	NA	3297	‡	3325	NA	3353	NA	3381	NA
3242	NA	3270	NA	3298	NA	3326	NA	3354	NA	3382	NA
3243	NA	3271	NA	3299	NA	3327	NA	3355	NA	3383	‡
3244	‡	3272	NA	3300	NA	3328		3356	NA	3384	NA
3245		3273		3301	NA	3329	NA	3357	NA	3385	NA
3246		3274	‡	3302	NA	3330	‡	3358	NA	3386	NA
3247		3275	NA	3303	NA	3331	NA	3359	NA	3387	NA
3248	NA	3276	NA	3304	NA	3332	NA	3360	NA	3388	NA
3249	NA	3277	NA	3305	NA	3333	‡	3361	NA	3389	NA
3250	NA	3278	‡	3306	NA	3334	NA	3362	NA	3390	6
3251	C	3279	C	3307	NA	3335	NA	3363	NA	3391	6
3252	NA	3280	NA	3308	NA	3336	NA	3364	NA	3392	C
3253	NA	3281	NA	3309	NA	3337	NA	3365	NA	3393	C
3254	NA	3282	/	3310	NA	3338	NA	3366	NA	3394	‡
3255	NA	3283		3311	NA	3339	NA	3367	6	3395	C
3256		3284		3312	NA	3340	NA	3368	6	3396	NA
3257	C	3285		3313	NA	3341	NA	3369	‡	3397	C
3258	‡	3286		3314	NA	3342	NA	3370	C	3398	NA
3259		3287		3315	NA	3343	NA	3371	NA	3399	NA
3260		3288		3316	NA	3344	NA	3372		3400	NA
3261	NA	3289		3317	NA	3345	NA	3373	C	3401	NA

‡ Incorporated in initial issue of Schedule.
 NA Modification/Amendment not applicable to this Schedule.
 C Modification/Amendment cancelled.
 (A) Amendment.
 (M) Modification.

MODIFICATION AND AMENDMENT SHEET

(Airframe)

Mod. No.	A.L. No.	Mod. No.	A.L. No.	Mod. No.	A.L. No.	Mod. No.	A.L. No.	Mod. No.	A.L. No.	Mod. No.	A.L. No.
3402	NA	3430	NA	3458	C	3486	NA	3514	C	3542	C
3403	NA	3431	NA	3459		3487	6	3515	‡	3543	NA
3404	NA	3432	6	3460	7	3488	NA	3516	NA	3544	NA
3405	C	3433	C	3461	7	3489	NA	3517	NA	3545	NA
3406		3434	C	3462	NA	3490	C	3518	NA	3546	NA
3407	NA	3435		3463	NA	3491	6	3519	NA	3547	C
3408	NA	3436	NA	3464	NA	3492	/	3520		3548	NA
3409	NA	3437		3465	NA	3493	C	3521	‡	3549	NA
3410	C	3438	4	3466	‡	3494	NA	3522	6	3550	NA
3411	NA	3439	4	3467		3495	NA	3523	NA	3551	NA
3412	NA	3440	7	3468		3496	NA	3524	NA	3552	
3413	NA	3441	6	3469		3497	NA	3525	/	3553	
3414	NA	3442	‡	3470	NA	3498	NA	3526	NA	3554	
3415	C	3443	‡	3471	NA	3499	C	3527	‡	3555	6
3416	NA	3444	‡	3472	NA	3500	C	3528	NA	3556	NA
3417	NA	3445	‡	3473	NA	3501	NA	3529	4	3557	/
3418	NA	3446	NA	3474	NA	3502		3530	C	3558	NA
3419	NA	3447	NA	3475	C	3503	NA	3531	NA	3559	NA
3420	‡	3448	NA	3476		3504		3532	NA	3560	‡
3421	‡	3449	NA	3477	C	3505	2	3533	NA	3561	NA
3422	NA	3450	C	3478	‡	3506	NA	3534	NA	3562	7
3423	NA	3451	NA	3479	7	3507	‡	3535	NA	3563	4
3424	C	3452	‡	3480	NA	3508	NA	3536	NA	3564	6
3425	NA	3453	NA	3481	NA	3509	NA	3537		3565	
3426	NA	3454	NA	3482	‡	3510	NA	3538	NA	TO	NA
3427	‡	3455	NA	3483	‡	3511		3539	‡	3576	
3428	NA	3456	NA	3484	NA	3512	NA	3540	C	3577	‡
3429	NA	3457	NA	3485	NA	3513	6	3541	C	3578	NA

‡ Incorporated in initial issue of Schedule.
 NA Modification/Amendment not applicable to this Schedule.
 C Modification/Amendment cancelled.
 (A) Amendment.
 (M) Modification.

MODIFICATION AND AMENDMENT SHEET

(Airframe)

Mod. No.	A.L. No.	Mod. No.	A.L. No.	Mod. No.	A.L. No.	Mod. No.	A.L. No.	Mod. No.	A.L. No.	Mod. No.	A.L. No.	
3579	NA	3704	NA	3736	NA	3764	NA	3799	7	3832	NA	
3580	NA	3705	NA	3737	NA	3765	NA	3800	NA	3833	6	
3581	4	3706	6	3738	4	3766	NA	3801	NA	3834	6	
3582	C	3707	NA	3739	NA	3767	1	3802	C	3835	6	
3583	2	3708	NA	3740	NA	3768	NA	3803	C	3836	NA	
3584	NA	3709	NA	3741	1	3769	NA	3804	C	3837	NA	
3585	6	3710	9	3742	NA	3770	4	3805	NA	3838	NA	
3586	NA	3711	NA	3743	1	3771	NA	3806	NA	3839	NA	
3587	NA	3712	6	3744	C	3772	C	3807	7	3840	6	
3588	NA	3713	NA	3745	NA	3773	‡	3808	1	3841	7	
3589	NA	3714	NA	3746	NA	3774	NA	3809	C	3842	NA	
3590	NA	3715	NA	3747	NA	3775	NA	3810	C	3843	NA	
3591	NA	3716	}	3748		3776	NA	3811	C	3844	NA	
3592	C	TO		3749	6	3777	9	3812	C	3845	6	
3593	1	3721		3750	3	3778	NA	3813	C	3846	NA	
3594	NA	3723	NA	3751	NA	3779	NA	3814	NA	3847	NA	
3595	NA	3724	NA	3752	NA	3780	NA	3815	1	3848	C	
3596	NA	3725	NA	3753	NA	3781	}	3816	NA	3849	3	
3597	4	3726	1	3754	NA	TO		NA	3817	NA	3850	NA
3598	2	3727	NA	3755	NA	3790		3818	NA	3851	NA	
3599	6	3728	NA	3756	NA	3791	C	3819	NA	3852	7	
3600	NA	3729	NA	3757	NA	3792	7	3820	NA	3853	NA	
3601(A)	}	3730	NA	3758	NA	3793	NA	3821	NA	3854	NA	
TO		NA	3731	NA	3759	7	3794	NA	3822	NA	3855	4
3700(A)		3732	NA	3760	NA	3795	C	3823	6	3856	6	
3701	7	3733	4	3761	7	3796	NA	3824	}	3857	NA	
3702	‡	3734	NA	3762	C	3797	NA	TO		NA	3858	7
3703	‡	3735	NA	3763	6	3798	NA	3831		3859	8	

MODIFICATION AND AMENDMENT SHEET
(Airframe)

Mod. No.	A.L. No.	Mod. No.	A.L. No.	Mod. No.	A.L. No.	Mod. No.	A.L. No.	Mod. No.	A.L. No.	Mod. No.	A.L. No.
3860	C	3900	7	3928	NA	3959	NA	3992	NA	4020	NA
3861	} NA	3901		3929	6	3960	NA	3993	NA	4021	NA
TO		3902	C	3930	8	3961	NA	3994	NA	4022	} NA
3868		3903	NA	3931		3962	6	3995	NA	TO	
3869	7	3904	NA	3932	NA	3963	7	3996	7	4031	
3870	C	3905	NA	3933	NA	3964	NA	3997	NA	4032	7
3871	C	3906	6	3934	NA	3965	NA	3998	7	4033	7
3872	NA	3907	NA	3935	NA	3966	7	3999	7	4034	
3873	NA	3908	NA	3936	NA	3967	NA	4000	NA	4035	
3874	NA	3909	NA	3937	6	3968	NA	4001	NA	4036	NA
3875	NA	3910	NA	3938		3969	C	4002	NA	4037	
3876	NA	3911	7	TO	NA	3970	NA	4003	7	4038	NA
3877	NA	3912	NA	3943		3971	6	4004	NA	4039	NA
3878	6	3913	C	3944	‡	3972		4005	7	4040	NA
3879	7	3914	7	3945	NA	3973	NA	4006	NA	4041	NA
3880	NA	3915	NA	3946	NA	3974	NA	4007		4042	6
3881	6	3916	NA	3947	NA	3975	NA	4008	NA	4043	NA
3882	NA	3917	7	3948	6	3976	6	4009		4044	NA
3883	6	3918	7	3949	6	3977	C	4010	NA	4045	NA
3884	NA	3919	NA	3950		3978		4011	NA	4046	NA
3885	} NA	3920	7	3951	NA	TO	NA	4012	NA	4047	7
TO		3921	NA	3952	NA	3985		4013	NA	4048	NA
3894		3922	NA	3953	NA	3986		4014		4049	NA
3895	6	3923	NA	3954	NA	3987	NA	4015	NA	4050	7
3896	NA	3924	NA	3955	6	3988	NA	4016	NA	4051	NA
3897	NA	3925		3956	NA	3989	NA	4017	NA	4052	NA
3898	NA	3926	NA	3957	NA	3990	C	4018	NA	4053	NA
3899	NA	3927		3958	7	3991	C	4019	NA	4054	NA

‡ Incorporated in initial issue of Schedule.
 NA Modification/Amendment not applicable to this Schedule.
 C Modification/Amendment cancelled.
 (A) Amendment.
 (M) Modification.

MODIFICATION AND AMENDMENT SHEET

(Airframe)

Mod. No.	A.L. No.	Mod. No.	A.L. No.	Mod. No.	A.L. No.	Mod. No.	A.L. No.	Mod. No.	A.L. No.	Mod. No.	A.L. No.
4055	NA	4083	NA	4111	NA	4152	7	4223	8	4273	
4056	NA	4084	NA	4112	7	4153		4224	NA	4274	NA
4057	NA	4085		4113	NA	4154	6	4225	8	4275	NA
4058	NA	4086		4114		4155	6	4226	NA	4276	NA
4059	NA	4087	C	TO	NA	4156	NA	4227	7	4277	NA
4060	NA	4088	NA	4122		4157	NA	4228		4278	NA
4061	NA	4089	NA	4123	6	4158	NA	4229	NA	4279	NA
4062	NA	4090	C	4124	6	4159	NA	4230	NA	4280	7
4063		4091	7	4125	7	4160	7	4231	NA	4281	NA
4064	NA	4092	C	4126	NA	4161		4232	NA	4282	NA
4065	NA	4093		4127	NA	4162	NA	4233	NA	4283	NA
4066	NA	4094	7	4128	NA	4163	NA	4234	7	4284	NA
4067		4095	NA	4129	NA	4164		4235		4285	
4068	NA	4096	NA	4130	NA	4165	NA	4236	NA	4286	7
4069	NA	4097	NA	4131		4166	7	4237	NA	4287	7
4070	C	4098	NA	4132	NA	4167	NA	4238	NA	4288	8
4071	7	4099		4133	C	4168	NA	4239	NA	4289	NA
4072	NA	4100	NA	4134	C	4169	7	4240		4290	C
4073	NA	4101		4135	NA	4170		TO	NA	4291	
4074	C	4102	NA	4136	NA	TO	NA	4264		4292	NA
4075	7	4103	NA	4137	7	4215		4265	NA	4293	NA
4076	NA	4104	NA	4138	NA	4216		4266	NA	4294	NA
4077	7	4105	6	4139	NA	4217		4267	NA	4295	NA
4078	7	4106	7	4140	NA	4128		4268	NA	4296	NA
4079	7	4107	7	4141		4129		4269		4297	NA
4080	8	4108	NA	TO	NA	4220	NA	4270	7	4298	8
4081	NA	4109	NA	4150		4221		4271	7	4299	NA
4082	NA	4110	NA	4151	7	4222	7	4272	NA	4300	

MODIFICATION AND AMENDMENT SHEET
(Airframe)

Mod. No.	A.L. No.	Mod. No.	A.L. No.	Mod. No.	A.L. No.	Mod. No.	A.L. No.	Mod. No.	A.L. No.	Mod. No.	A.L. No.
4301	NA	4329	NA	4357	NA	4385	NA	4413		4441	
4302		4330	NA	4358	C	4386	NA	4414		4442	NA
4303	8	4331	NA	4359	NA	4387	NA	4415	8	4443	NA
4304	NA	4332		4360	8	4388	NA	4416	NA	4444	NA
4305		4333	7	4361	NA	4389	NA	4417	C	4445	8
4306		4334		4362	NA	4390	NA	4418	NA	4446	NA
4307	NA	4335	8	4363	NA	4391	NA	4419	NA	4447	NA
4308	7	4336		4364	NA	4932	NA	4420	8	4448	8
4309	NA	4337	NA	4365	NA	4393	NA	4421	NA	4449	9
4310	8	4338	8	4366	NA	4394	NA	4422	NA	4450	NA
4311	NA	4339		4367	NA	4395	NA	4423	NA	4451	8
4312	NA	4340		4368	NA	4396	NA	4424	NA	4452	8
4313	8	4341	NA	4369	NA	4397	NA	4425	NA	4453	
4314		4342	NA	4370	NA	4398	NA	4426	NA	4454	8
4315		4343	NA	4371	NA	4399	NA	4427	8	4455	NA
4316	NA	4344	NA	4372	NA	4400	NA	4428	8	4456	8
4317	NA	4345	NA	4373	NA	4401	NA	4429		4457	NA
4318	NA	4346	NA	4374	NA	4402	NA	4430	NA	4458	NA
4319	NA	4347	NA	4375	NA	4403	NA	4431	9	4459	NA
4320	NA	4348	NA	4376	NA	4404	NA	4432	9	4460	8
4321		4349		4377	NA	4405	NA	4433	8	4461	NA
4322		4350	NA	4378	NA	4406	NA	4434	NA	4462	NA
4323	8	4351	8	4379	NA	4407	NA	4435	9	4463	NA
4324		4352	C	4380	NA	4408	NA	4436	NA	4464	NA
4325	C	4353	C	4381	NA	4409	NA	4437	NA	4465	9
4326		4354	NA	4382	NA	4410	NA	4438	NA	4466	NA
4327		4355	NA	4383	NA	4411	NA	4439		4467	
4328		4356	8	4384	NA	4412	NA	4440		4468	9

‡ Incorporated in initial issue of Schedule.
 NA Modification/Amendment not applicable to this Schedule.
 C Modification/Amendment cancelled.
 (A) Amendment.
 (M) Modification.

**MODIFICATION AND AMENDMENT SHEET
(Airframe)**

Mod. No.	A.L. No.	Mod. No.	A.L. No.	Mod. No.	A.L. No.	Mod. No.	A.L. No.	Mod. No.	A.L. No.	Mod. No.	A.L. No.
4469	9	4704	9	4939	12	5043	12	5100			
4470	NA										
4471	NA	4706	9	4948	C	5045	12	5105	14		
4472	NA	4707	9	4949	14	5046	13				
4473	NA			4956	14			5111	15		
4474	NA			4958	11	5049	12	5112	15		
4475	C			4959	11	5050	12				
4476	NA	4714	11	4960	11	5051	14	5119	15		
4477	NA										
4478		4726	11			5058	12	5183			
4479	NA			5015	12						
4480	C	4781	11			5061	12	5190	15		
4481	8							5191	15		
4482	NA	4783	11			5080	14				
4483	NA							5195			
4484		4793	11	5023	12	5087	12	5197	15		
4485				5024	11						
4486		4799	12			5091	14	5198	15		
4487				5026	12	5093	14				
4488	NA	4855	11	5027	11	5096	13				
4489	9	4864	12	5028	12						
4490		4925	12								
4491	NA			5031	12						
4492	NA	4930	11	5032	12						
4493	NA										
4494	NA	4933	11								
4495	9	4936	12	5035	12						
4496	6										

‡ Incorporated in initial issue of Schedule.
 NA Modification/Amendment not applicable to this Schedule.
 C Modification/Amendment cancelled.
 (A) Amendment.
 (M) Modification.

This file was downloaded
from the RTFM Library.

Link: www.scottbouch.com/rtfm

Please see site for usage terms,
and more aircraft documents.

