

**CONTROLS, FLYING
AILERON CONTROLS IN WING, PORT**

Ref. No.	Part No.	Description	No. off	Matl Spec.	Cl. of Equip.	Plate No.
					M.R. L.M.	
		1 2 3 4 5 6				
	E.A1.45.13	CONTROLS, AILERON, IN WING, PORT, ASSEMBLY	—	—	—	
		Spares for:—				
3572	E.A3.45.397	TUBE, CONTROL, BETWEEN FUSELAGE AND OPERATING LEVER AT RIB 4, CENTRE WING, ASSEMBLY (PRE-MOD 4930)	1	—	B	D.7
6051405	E.A3.45.687	TUBE, CONTROL, BETWEEN FUSELAGE AND OPERATING LEVER AT RIB 4, CENTRE WING, ASSEMBLY (MOD. 4930)	1	—	B	
		Spares for:—				
1683	EEAS.47/2	FITTING, adjuster	1	—	C	D.1
28M/13879	A29/NP	NUT, lock, 1/8" BSF	1	—	C	
3573	E.A3.45.401	TUBE, control, between operating lever on rib 4 and centre lever, centre wing, assembly (Pre-Mod. 4930)	1	—	B	D.7
6051406	E.A3.45.689	TUBE, control, between operating lever on rib 4 and centre lever, centre wing, assembly (Mod. 4930)	1	—	B	
3574	E.A3.45.405	TUBE, control, from centre lever to lever between ribs 2 and 2B, outer wing, assembly (Pre-Mod. 4930)	1	—	B	D.7
6051407	E.A3.45.691	TUBE, control, from centre lever to lever between ribs 2 and 2B, outer wing, assembly (Mod. 4930)	1	—	B	
3576	E.A3.45.409	TUBE, control, from lever between ribs 2 and 2B to rib 4, outer wing, assembly (Pre-Mod. 4930)	1	—	B	D.7
6051408	E.A3.45.693	TUBE, control, from lever between rib 2 and 2B to rib 4, outer wing, assembly (Mod. 4930)	1	—	B	
3571	E.A3.45.321	TUBE, CONTROL, FROM HINGE MOUNTING ON RIB 4, OUTER WING, TO AILERON OPERATING LEVER, ASSEMBLY (PRE-MOD. 4930)	1	—	B	D.7
6051404	E.A3.45.655	TUBE, CONTROL, FROM HINGE MOUNTING ON RIB 4, OUTER WING, TO AILERON OPERATING LEVER, ASSEMBLY (MOD. 4930)	1	—	B	
		Spares for:—				
494	E.A1.45.201	FORK-END, adjustable	1	—	C	D.7
28M/9452621	A27/NT	NUT, lock, 1/8" BSF	1	—	C	
		Attaching parts for control tubes:—				
67	EEAS.13/1	Bolt, special	2	S.96	C	D.7
68	EEAS.14	Bush, bearing	2	S.96	C	D.7
3569	EEAS.63/E	Nut, special	2	S.96	C	D.7
3570	EEAS.127	Piece, distance	2	S.96	C	D.7
28P/9527619	SP.90/C7	Pin, split	2	—	C	

**CONTROLS, FLYING
AILERON CONTROLS IN WING, STARBOARD**

Ref. No.	Part No.	Description						No. off	Matl Spec.	Cl. of Equip. M.R. L.M.	Plate No.
		1	2	3	4	5	6				
	E.A1.45.14	CONTROLS, AILERON, IN WING, STARBOARD ...						—	—	—	
		Spares for:—									
3572	E.A3.45.397	TUBE, CONTROL, BETWEEN FUSELAGE AND OPERATING LEVER AT RIB 4, CENTRE WING, ASSEMBLY (PRE-MOD 4930)						1	—	B	D.7
6051405	E.A3.45.687	TUBE, CONTROL, BETWEEN FUSELAGE AND OPERATING LEVER AT RIB 4, CENTRE WING, ASSEMBLY (MOD. 4930)						1	—	B	
		Spares for:—									
1683	EEAS.47/2	FITTING, adjuster						1	—	C	D.1
28M/13879	A29/NP	NUT, lock, 1/2" BSF						1	—	C	
3573	E.A3.45.401	TUBE, control, between operating lever on rib 4 and centre lever, centre wing, assembly (Pre-Mod. 4930)						1	—	B	D.7
6051406	E.A3.45.689	TUBE, control, between operating lever on rib 4 and centre lever, centre wing, assembly (Mod. 4930)						1	—	B	
3574	E.A3.45.405	TUBE, control, from centre lever to lever between ribs 2 and 2B, outer wing, assembly (Pre-Mod. 4930)						1	—	B	D.7
6051407	E.A3.45.691	TUBE, control, from centre lever to lever between ribs 2 and 2B, outer wing, assembly (Mod. 4930)						1	—	B	
3575	E.A3.45.410	TUBE, control, from lever between ribs 2 and 2B to rib 4, outer wing, assembly (Pre-Mod. 4930)						1	—	B	D.7
6051409	E.A3.45.694	TUBE, control, from lever between ribs 2 and 2B to rib 4, outer wing, assembly (Mod. 4930)						1	—	B	
3571	E.A3.45.321	TUBE, CONTROL, FROM HINGE MOUNTING ON RIB 4, OUTER WING, TO AILERON OPERATING LEVER, ASSEMBLY (PRE-MOD. 4930)						1	—	B	D.7
6051404	E.A3.45.655	TUBE, CONTROL, FROM HINGE MOUNTING ON RIB 4, OUTER WING, TO AILERON OPERATING LEVER, ASSEMBLY (MOD. 4930)						1	—	B	
		Spares for:—									
494	E.A1.45.201	FORK-END, adjustable						1	—	C	D.7
28M/9452621	A27/NT	NUT, lock, 1/2" BSF						1	—	C	
		Attaching parts for control tubes:—									
67	EEAS.13/1	Bolt, special						2	S.96	C	D.7
68	EEAS.14	Bush, bearing						2	S.96	C	D.7
3569	EEAS.63/E	Nut, special						2	S.96	C	D.7
3570	EEAS.127	Piece, distance						2	S.96	C	D.7
28P/9527619	SP.90/C7	Pin, split						2	—	C	

**CONTROLS, FLYING
FLAP OPERATING MECHANISM, PORT**

Ref. No.	Part No.	Description	No. off	Matl Spec.	Cl. of Equip.	Plate No.
					M.R. L.M.	
		1 2 3 4 5 6				
	E.A1.20.701	FLAP OPERATING MECHANISM, PORT, ASSEMBLY	—	—	—	
		Spares for:—				
495	E.A1.20.711	BRACKET , flap operating jack unit support ...	2	L.65	C	D.8
		Attaching parts for E.A1.20.711:—				
28D/1011259	A25/10G	Bolt, 7/8" BSF ...	2	—	C	
28W/9419476	SP.15/G	Washer ...	2	—	C	
496	E.A1.20.885	BRACKET , mounting, flap operating jack unit (Pre-Mod. 4781)	4	DTD.683	C	D.8
1439325	E.A3.20.3991	BRACKET , mounting, flap operating jack unit (Mod. 4781)	4	S.97	C	
		Attaching parts for E.A1.20.885 or E.A3.20.3991:—				
28D/1011258	A25/8G	Bolt, 7/8" BSF ...	1	—	C	
6490	E.A1.20.3129	BRACKET , mounting, Desynn transmitter ...	1	L.72	C	D.8
		Attaching parts for E.A1.20.3129:—				
28D/1010658	A25/1B	Bolt, 4 BA ...	6	—	C	
5K/1940780	AS.1900/B	CLIP , cable ...	1	—	C	
2036	E.A3.20.1011	LINK, CONNECTING, FLAP TO OPERATING MECHANISM, ASSEMBLY	4	—	B	D.8
		Spares for:—				
500	E.A1.20.797	PLATE , locking ...	1	L.72	C	D.8
		Attaching parts for E.A1.20.797:—				
28D/1010142	A25/9B	Bolt, 4 BA ...	2	—	C	
28M/1278189	AGS.2001/B/1	Nut, 4 BA ...	2	—	C	
28W/9419474	SP.15/B	Washer ...	2	—	C	
501	E.A1.20.795	SCREW , adjusting ...	1	S.96	C	D.8
502	E.A1.20.791	WASHER ...	2	L.65 or L.72	C	D.8
504	E.A1.20.683	PLATE , cover, at rib 3A, for assembly of flap jack unit (Pre-Mod. 738)	1	DTD.320	C	D.8
5849	E.A3.20.2289	PLATE , cover, at rib 3A, for assembly of flap jack unit (Mod. 738)	1	L.72	C	D.8
3499	E.A1.20.10777	PLATE , cover, at rib 3A, for assembly of flap jack unit	1	L.72	C	
3500	E.A1.20.10778	PLATE , cover, at rib 3A, for assembly of flap jack unit	1	L.72	C	
		Attaching parts for E.A1.20.683, E.A3.20.2289, E.A1.20.10777 and E.A1.20.10778:—				
28D/1212939	A61/1C	Bolt, 2 BA ...	6	—	C	
28M/10281	AGS.2001/C/3	Nut, 2 BA ...	6	—	C	
28W/9419475	SP.15/C	Washer ...	6	—	C	
3497	E.A1.20.10779	PLATE , cover, at ribs 3, 4 and 5, for assembly of flap jack unit	2	L.72	C	
3498	E.A1.20.10780	PLATE , cover, at ribs 3, 4 and 5, for assembly of flap jack unit	1	L.72	C	
		Attaching parts for E.A1.20.10779 and E.A1.20.10780:—				
28D/1212939	A61/1C	Bolt, 2 BA ...	7	—	C	
28M/10281	AGS.2001/C/3	Nut, 2 BA ...	7	—	C	
28W/9419475	SP.15/C	Washer ...	7	—	C	

**CONTROLS, FLYING
FLAP OPERATING MECHANISM, PORT**

Ref. No.	Part No.	Description	No. off	Matl Spec.	Cl. of Equip.	Plate No.
					M.R. L.M.	
6491	E.A1.20.3133	ROD CONNECTING, FLAP INDICATOR MECHANISM, ASSEMBLY Consisting of:—	1	—	B	D.8
7095	E.A1.20.881	FORK-END	1	L.1	C	D.8
	E.A1.20.883	FORK-END, L.H. thread	1	L.1	—	D.8
28M/1006473	A27/CT	NUT, 2 BA	1	—	C	
28M/13253	A27/CTL	NUT, 2 BA, L.H. thread	1	—	C	
7094	E.A1.20.3157	ROD, screwed	1	DTD.683	C	D.8
		Attaching parts for E.A1.20.3133:—				
28N/1045680	AGS.899/2	Collar	2	—	C	
28P/1207864	SP.4Y/B4	Pin, shackle	2	—	C	
28P/9527619	SP.90/C7	Pin, split	2	—	C	
9888	E.A1.20.813	ROD, PUSH, OUTBOARD FLAP CONTROL, BETWEEN FLAP HINGE AND OPERATING JACK, ASSEMBLY Spares for:—	1	—	C	D.8
507	E.A1.20.839	BUSH	1	DTD.197	C	D.8
6920	E.A1.20.827	EYE-END	1	L.65	C	D.8
508	E.A1.20.825	FORK-END	1	L.65	C	D.8
		Attaching parts for E.A1.20.827 and E.A1.20.825:—				
1096	EEAS.37/15A	Nipple	6	—	C	D.8
	EEAS.38/2A	Spoke (Make from Ref. No. 28R/6124)	3	S.96	LM	D.8
28N/9156370	SP.21	NIPPLE, lubricating	1	—	C	
549	EEAS.5	WASHER, fibre, for lubricating nipple	1	BSS.216	C	D.8
9889	E.A1.20.815	ROD, PUSH, INBOARD AND OUTBOARD FLAP CONTROL, BETWEEN HINGE AND OPERATING JACK, ASSEMBLY Spares for this group are identical with those for group Part No. E.A1.20.813	2	—	C	D.8
9891	E.A1.20.819	ROD, PUSH, INBOARD FLAP CONTROL, BETWEEN HINGE AND OPERATING JACK CONNECTING ARM, ASSEMBLY Spares for this group are identical with those for group Part No. E.A1.20.813	1	—	C	D.8
		Attaching parts for E.A1.20.813, E.A1.20.815 and E.A1.20.819:—				
503	E.A1.20.803	Pin, shackle	1	S.96	C	D.8
509	E.A1.20.805	Pin, shackle	1	S.96	C	D.8
28P/19176	SP.90/G6	Pin, split	2	—	C	
510	E.A1.20.807	Plate, locking	1	L.72	C	D.8
28S/9995325	A33/B8	Screw, 4 BA	2	—	C	
6A/2134	†	TRANSMITTER, Desynn	1	—	A	
		Attaching parts for Ref. No. 6A/2134:—				
28D/1212940	A61/2C	Bolt, 2 BA	4	—	C	
28M/10281	AGS.2001/C/3	Nut, 2 BA	4	—	C	
28WV/9419475	SP.15/C	Washer	4	—	C	

**CONTROLS, FLYING
FLAP OPERATING MECHANISM, STARBOARD**

Ref. No.	Part No.	Description	No. off	Matl Spec.	Cl. of Equip. M.R. L.M.	Plate No.
	E.A1.20.700	FLAP OPERATING MECHANISM, STARBOARD ASSEMBLY	—	—	—	
		Spares for:—				
495	E.A1.20.711	BRACKET , flap operating jack unit support ...	2	L.65	C	D.8
		Attaching parts for E.A1.20.711:—				
28D/1011259	A25/10G	Bolt, 7/8" BSF ...	2	—	C	
28W/9419476	SP.15/G	Washer ...	2	—	C	
496	E.A1.20.885	BRACKET , mounting, flap operating jack unit (Pre-Mod. 4781)	2	DTD.683	C	D.8
1439325	E.A3.20.3991	BRACKET , mounting, flap operating jack unit (Mod. 4781)	2	S.97	C	
511	E.A1.20.887	BRACKET , mounting, flap operating jack unit, centre wing (Pre-Mod. 4781)	2	DTD.683	C	
1439326	E.A3.20.4009	BRACKET , mounting, flap operating jack unit, centre wing (Mod. 4781)	2	S.97	C	
		Attaching parts for E.A1.20.885, E.A1.20.887, E.A3.20.3991 or E.A3.20.4009:—				
28D/1011258	A25/8G	Bolt, 7/8" BSF ...	1	—	C	
2036	E.A3.20.1011	LINK, CONNECTING, FLAP TO OPERATING MECHANISM, ASSEMBLY	4	—	B	D.8
		Spares for:—				
500	E.A1.20.797	PLATE , locking ...	1	L.72	C	D.8
		Attaching parts for E.A1.20.797:—				
28D/1010142	A25/9B	Bolt, 4 BA ...	2	—	C	
28M/1278189	AGS.2001/B/1	Nut, 4 BA ...	2	—	C	
28W/9419474	SP.15/B	Washer ...	2	—	C	
501	E.A1.20.795	SCREW , adjusting ...	1	S.96	C	D.8
502	E.A1.20.791	WASHER ...	2	L.65 or L.72	C	D.8
504	E.A1.20.683	PLATE , cover, at rib 3A, for assembly of flap jack unit (Pre-Mod. 738)	1	L.72	C	D.8
5849	E.A3.20.2289	PLATE , cover, at rib 3A, for assembly of flap jack unit (Mod. 738)	1	L.72	C	D.8
3499	E.A1.20.10777	PLATE , cover, at rib 3A, for assembly of flap jack unit	1	L.72	C	
3500	E.A1.20.10778	PLATE , cover, at rib 3A, for assembly of flap jack unit	1	L.72	C	
		Attaching parts for E.A1.20.683, E.A3.20.2289, E.A1.20.10777 and E.A1.20.10778:—				
28D/1212939	A61/1C	Bolt, 2 BA ...	6	—	C	
28M/10281	AGS.2001/C/3	Nut, 2 BA ...	6	—	C	
28W/9419475	SP.15/C	Washer ...	6	—	C	
3497	E.A1.20.10779	PLATE , cover, at ribs 3, 4 and 5, for assembly of flap jack unit	2	L.72	C	
3498	E.A1.20.10780	PLATE , cover, at ribs 3, 4 and 5, for assembly of flap jack unit	1	L.72	C	
		Attaching parts for E.A1.20.10779 and E.A1.20.10780:—				
28D/1212939	A61/1C	Bolt, 2 BA ...	7	—	C	
28M/10281	AGS.2001/C/3	Nut, 2 BA ...	7	—	C	
28W/9419475	SP.13/C	Washer ...	7	—	C	

**CONTROLS, FLYING
FLAP OPERATING MECHANISM, STARBOARD**

Ref. No.	Part No.	Description	No. off	Matl Spec.	Cl. of Equip.	Plate No.
					M.R. L.M.	
9890	E.A1.20.817	ROD, PUSH, OUTBOARD FLAP CONTROL, BETWEEN FLAP HINGE AND OPERATING JACK, ASSEMBLY Spares for:—	1	—	B	D.8
507	E.A1.20.839	BUSH	1	DTD.197	C	D.8
6920	E.A1.20.827	EYE-END	1	L.65	C	D.8
508	E.A1.20.825	FORK-END	1	L.65	C	D.8
1096	EEAS.37/15A	Attaching parts for E.A1.20.827 and E.A1.20.825:—				
	EEAS.38/2A	Nipple	6	S.96	C	D.8
		Spoke (Make from Ref. No. 28R/6124)	3	S.96	LM	D.8
28N/9156370	SP.21	NIPPLE , lubricating	1	—	C	
549	EEAS.5	WASHER , fibre, for lubricating nipple	1	—	C	D.8
9892	E.A1.20.869	ROD, PUSH, INBOARD FLAP CONTROL, BETWEEN HINGE AND OPERATING JACK, CONNECTING ARM, ASSEMBLY Spares for this group are identical with those for group Part No. E.A1.20.817	1	—	B	D.8
9893	E.A1.20.889	ROD, PUSH, INBOARD FLAP, CENTRE WING, ASSEMBLY Spares for this group are identical with those for group Part No. E.A1.20.817	1	—	B	D.8
9894	E.A1.20.891	ROD, PUSH, FLAP, OUTER WING, ASSEMBLY Spares for this group are identical with those for group Part No. E.A1.20.817	1	—	B	D.8
		Attaching parts for E.A1.20.817, E.A1.20.869, E.A1.20.889 and E.A1.20.891				
503	E.A1.20.803	Pin, shackie	1	S.96	C	D.8
509	E.A1.20.805	Pin, shackie	1	S.96	C	D.8
28P/19176	SP.90/G6	Pin, split	2	—	C	
510	E.A1.20.807	Plate, locking	1	L.72	C	D.8
28S/9995325	A33/B8	Screw, 4BA	2	—	C	

**CONTROLS, FLYING
FLYING CONTROLS IN CENTRE FUSELAGE**

Ref. No.	Part No.	Description	No. off	Matl Spec.	Cl. of Equip.	Plate No.
					M.R. L.M.	
		1 2 3 4 5 6				
	E.A3.45.379	CONTROLS, FLYING, IN CENTRE FUSELAGE, ASSEMBLY	—	—	—	
7769	E.A1.45.215	Spares for:— LEVERS, AILERON AND MOUNTING AT FRAME 22, ASSEMBLY (PRE-MOD.4956) (For Aircraft Not Embodying Mod. 5100)	1	—	B	D.5
	E.A1.45.217	Spares for:— LEVER, ASSEMBLY	1	—	—	
2A/9500420	HOFFMANN T.21	Spares for:— BEARING, ballrace	2	—	C	
	E.A1.45.223	LEVER, top	1	—	—	
	E.A1.45.225	LEVER, bottom	1	—	—	
	E.A1.45.1031	SPINDLE	1	—	—	
21119	E.A1.45.243	SPOOL, retaining	1	—	C	
		Attaching parts for E.A1.45.243:—				
1095	EEAS.37/14A	Nipple	4	—	C	
	EEAS.38/2A	Spoke (Make from Ref. No. 28R/6124) ...	2	5.96	LM	
6119256	E.A3.45.5105	LEVERS, aileron and mounting at frame 22, assembly (Mod. 4956) (For Aircraft Embodying Mod. 5100)	1	—	B	
		Attaching parts for E.A3.45.5105:—				
28D/9436920	A25/1C	Bolt, 2 BA	14	—	C	
28D/9133011	A25/2C	Bolt, 2 BA	10	—	C	
28D/9435710	A25/11C	Bolt, 2 BA	2	—	C	
28M/1278190	AGS.2001/C/1	Nut, 2 BA	14	—	C	
	E.A3.45.5209	Washer, profile, 12 SWG	2	L.72	—	
28W/9419402	SP.13/C	Washer	28	—	C	
7768	E.A1.45.245	LEVER, AILERON IDLE, AT FRAME 22, ASSEMBLY (PRE-MOD. 4956) (For Aircraft Not Embodying Mod. 5100)	1	—	B	D.5
		Spares for:—				
2A/9500419	HOFFMANN T.17	BEARING, ballrace	2	—	C	
1937	E.A1.45.251	HOUSING, ballrace	2	—	C	
	E.A1.45.224	LEVER, assembly	1	—	—	
20842	E.A1.45.253	SPINDLE	1	—	C	
6119257	E.A3.45.5181	LEVER, aileron idle, at frame 22, assembly (Mod. 4956) (For Aircraft Embodying Mod. 5100)	1	—	B	
7760	E.A1.45.485	SUPPORT, CONTROL TUBE, BETWEEN FRAMES 12 AND 13, ASSEMBLY	1	—	A/MR	D.5
		Spares for:—				
2035	FAIREY AVIATION FS.515	BEARING, roller	3	—	B	D.5
	E.A1.45.545	EXTRUSION	1	—	—	
	E.A1.45.547	EXTRUSION	1	—	—	
10279	E.A1.45.463	SUPPORT	1	—	C	D.5
		Attaching parts for E.A1.45.463:—				
28D/9133012	A25/3C	Bolt, 2 BA	6	—	C	
28M/9403520	A27/CP	Nut, 2 BA	6	—	C	

**CONTROLS, FLYING
FLYING CONTROLS IN CENTRE FUSELAGE**

Ref. No.	Part No.	Description						No. off	Matl Spec.	Cl of Equip. M.R. L.M.	Plate No.
		1	2	3	4	5	6				
7762	E.A1.45.487	SUPPORT, CONTROL TUBE, AT FRAME 15, ASSEMBLY Spares for:—						1	—	A/MR	D.5
	FAIREY AVIATION										
2035	FS.515	BEARING, roller						3	—	B	D.5
10280	E.A1.45.465	SUPPORT						1	—	C	D.5
		Attaching parts for E.A1.45.487:—									
28D/1200119	A25/4C	Bolt, 2 BA						6	—	C	
28M/9403520	A27/CP	Nut, 2 BA						6	—	C	
7763	E.A1.45.489	SUPPORT, CONTROL TUBE, AT FRAME 20, ASSEMBLY Spares for:—						1	—	A/MR	D.5
	FAIREY AVIATION										
2035	FS.515	BEARING, roller						3	—	B	D.5
10281	E.A1.45.467	SUPPORT						1	—	C	D.5
		Attaching parts for E.A1.45.489:—									
28D/9133012	A25/3C	Bolt, 2 BA						6	—	C	
28M/9403520	A27/CP	Nut, 2 BA						6	—	C	
	EEAS.15/64/110NR	Strip, packing						3	—	—	
7765	E.A1.45.491	SUPPORT, CONTROL TUBE, AT FRAME 23, ASSEMBLY Spares for:—						1	—	A/MR	D.5
	FAIREY AVIATION										
2035	FS.515	BEARING, roller						2	—	B	D.5
10282	E.A1.45.469	SUPPORT						1	—	C	D.5
		Attaching parts for E.A1.45.491:—									
28D/1200119	A25/4C	Bolt, 2 BA						4	—	C	D.5
28M/9403520	A27/CP	Nut, 2 BA						4	—	C	
7766	E.A1.45.699	SUPPORT CONTROL TUBE, AT FRAME 27, ASSEMBLY Spares for:—						1	—	A/MR	D.5
	FAIREY AVIATION										
2035	FS.515	BEARING, roller						2	—	B	D.5
7767	E.A1.45.497	SUPPORT, CONTROL TUBE, AT FRAME 30A, ASSEMBLY Spares for:—						1	—	A/MR	D.5
	FAIREY AVIATION										
2035	FS.515	BEARING, roller						2	—	B	D.5
3586	E.A3.45.359	TUBE, control, elevator and rudder, assembly (Pre-Mod. 4930)						6	—	B	D.5
6051415	E.A3.45.673	TUBE, control, elevator and rudder, assembly (Mod. 4930)						6	—	B	
3585	E.A3.45.371	TUBE, control, between frames 12 and 15, assembly (Pre-Mod. 4930)						3	—	B	D.5
6051414	E.A3.45.679	TUBE, control, between frames 12 and 15, assembly (Mod. 4930)						3	—	B	
3583	E.A3.45.355	TUBE, control, aileron, between frames 15 and 20, assembly (Pre-Mod. 4930)						1	—	B	D.5
6051418	E.A3.45.671	TUBE, control, aileron, between frames 15 and 20, assembly (Mod. 4930)						1	—	B	

**CONTROLS, FLYING
FLYING CONTROLS IN CENTRE FUSELAGE**

Ref. No.	Part No.	Description						No. off	Matl Spec.	Cl. of Equip. M.R. L.M.	Plate No.
		1	2	3	4	5	6				
3587	E.A3.45.367	TUBE, CONTROL, BETWEEN FRAME 20 AND AILERON LEVER, ASSEMBLY (PRE-MOD. 4930)						1	—	B	D.5
6051694	E.A3.45.677	TUBE, CONTROL, BETWEEN FRAME 20 AND AILERON LEVER, ASSEMBLY (MOD. 4930)						1	—	B	
1683	EEAS.47/2	FORK-END, adjustable						1	DTD.683	C	D.6
28M/4095946	A29/NP	NUT, locking, 1/2" BSF						1	—	C	
3582	E.A3.45.363	TUBE, control, aileron, at frame 21, assembly (Pre-Mod. 4930)						1	—	B	D.5
6051417	E.A3.45.675	TUBE, control, aileron, at frame 21, assembly (Mod. 4930)						1	—	B	
3584	E.A3.45.375	TUBE, control, between frames 23 and 27, assembly (Pre-Mod. 4930)						2	—	B	D.5
6051416	E.A3.45.681	TUBE, control, between frames 23 and 27, assembly (Mod. 4930)						2	—	B	
		Attaching parts for control tubes:—									
67	EEAS.13/1	Bolt, special						2	S.96	C	D.1
68	EEAS.14	Bush, bearing						2	S.96	C	D.1
3569	EEAS.63/E	Nut, special						2	S.96	C	D.1
3570	EEAS.127	Piece, distance						2	S.96	C	D.1
28P/9527619	SP.90/C7	Pin, split						2	—	C	

Ref. No.	Part No.	1 2 3 4 5 6	Description	No. off	Matl Spec.	Cl. of Equip. M.R. L.M.	Plate No.

**CONTROLS, FLYING
FLYING CONTROLS IN COCKPIT**

Ref. No.	Part No.	Description						No. off	Matl Spec.	Cl. of Equip. M.R. L.M.	Plate No.
		1	2	3	4	5	6				
	E.G4.45.103	FLYING CONTROLS IN COCKPIT, ASSEMBLY (MOD. 4799)						—	—	—	
12G/9635203	L3/5578/GF/116 E.G4.45.107	CHARGE, H.E., emergency Spares for:—						1	—	C	
	E.A3.45.247	CONTROLS ON PILOT'S FLOOR AND FLOOR FIXING, ASSEMBLY (MOD. 4799) Spares for:—						—	—	—	
5W/4699	E.E. CO. LTD. BRADFORD	AILERON BIAS, ASSEMBLY Spares for:—						1	—	—	
2023	E.A6.45.345	ACTUATOR, linear, Type 259, Mk. 2						1	—	A	
28D/1011238	A25/3E	Attaching parts for Ref. 5W/4699:—						1	S.92	C	
28M/1011467	A27/ES	Bolt, shouldered, at angle end						1	—	C	
28P/9527619	SP.90/C7	Bolt, 1/4" BSF, at lever end						1	—	C	
	6212	Nut, 1/2" BSF						2	—	C	
	6213	Pin, split						2	—	C	
	E.A6.45.337	ANGLE						1	L.72	C	
	E.A6.45.338	ANGLE Attaching parts for E.A6.45.337 and E.A6.45.338:—						1	L.72	C	
28D/9133011	A25/2C	Bolt, 2 BA						2	—	C	
28D/9436920	A25/1C	Bolt, 2 BA						4	—	C	
28M/1278190	AGS.2001/C/1	Nut, 2 BA						6	—	C	
28W/9419402	SP.13/C	Washer						4	—	C	
2918	E.A6.45.335	TUBE, torque, and levers, assembly Attaching parts for E.A6.45.335:—						1	—	B	
2879	E.A6.45.343	Bolt, shouldered						1	—	C	
2881	E.A6.45.341	Bush, oilite						2	—	C	
28M/1011467	A27/ES	Nut, 1/2" BSF						1	—	C	
28P/9527619	SP.90/C7	Pin, split						1	—	C	
28W/9416197	SP.42/G	Washer, tab						1	—	C	
	E.G4.45.105	COLUMN, CONTROL, PILOT'S, ASSEMBLY ... (MOD. 4799) (PRE-MOD. 4956) (For Aircraft Not Embodying Mod. 5100) (Make from Part No. E.G4.45.5, Ref. 34327) (Supplied to drg. E.A3.00.5158 for spares purposes)						1	—	A	
	E.G4.45.109	COLUMN, CONTROL, PILOT'S, ASSEMBLY ... (MOD. 4956) (For Aircraft Embodying Mod. 5100) Spares for:—						1	—	—	
2A/9500419	HOFFMANN T.17	BEARING, ballrace, aileron control						1	—	C	D.2
2A/9500422	HOFFMANN T.25	BEARING, ballrace, pilot's hand grip						1	—	C	D.2
3459	E.A6.45.291	BLOCK, brake cable, adjusting Attaching parts for E.A6.45.291:—						1	DTD.5044	C	D.2
28D/1214031	AS.1242/8C	Bolt, 2 BA						1	—	C	
28M/5808573	A27/C5	Nut, 2 BA						1	—	C	
28P/9527619	SP.90/C7	Pin, split						1	—	C	
28S/9435718	A33/C24	Screw, 2 BA						2	—	C	
28W/9419475	SP.15/C	Washer						1	—	C	
5X/1004088	CZ.24285	BLOCK, terminal Attaching parts for CZ.24285:—						1	—	C	
28M/1278189	AGS.2001/B/1	Nut, 1/2 BA						2	—	C	
5X/9450403	Z.28426	Pillar, fixing						2	—	C	
28W/9419465	SP.13/B	Washer						2	—	C	

**CONTROLS, FLYING
FLYING CONTROLS IN COCKPIT**

Ref. No.	Part No.	Description						No. off	Matl Spec.	Cl. of Equip. M.R. L.M.	Plate No.
		1	2	3	4	5	6				
	E.B6.81.877	BRACKET , clip						1	—	—	
28S/1011785	A39/B10	Attaching parts for E.B6.81.877:— Screw, 4 BA						2	—	C	
22263	E.B6.81.2253	BRACKET , switch						1	—	C	
71	E.A1.45.107	BUSH , main bearing attached to bottom casting						1	L.65	C	D.2
28599	E.B7.81.1165	CABLE , assembly, N.69B						1	—	B	
20664	E.A3.45.473	CABLE , brake						1	—	C	D.2
		Attaching parts for E.A3.45.473:— Collar						1	—	C	
28N/1045680	AGS.899/2	Pin, shackle						1	—	C	
28P/1013002	SP.4Y/B9	Pin, split						1	—	C	
28P/9486478	SP.90/C5										
28E/1201807	AS.3180/5B	CLIP						1	—	C	
	E.B7.45.71	COLUMN , control, sub-assembly						1	—	—	
73	E.A1.45.125	CONTROL, ELEVATOR, SUB-ASSEMBLY (PRE-MOD. 4496)						1	—	A	D.2
		Spares for:— BEARING , ballrace						1	—	C	D.2
2A/9500426	HOFFMANN T.33	DIAPHRAGM , ballrace housing, mounting						1	—	C	D.2
16283	E.A1.45.177	HOUSING , ballrace						1	L.45	C	D.2
6227	E.A1.45.175	LEVER, OPERATING, ELEVATOR, GROUP						1	—	B	D.2
74	E.A1.45.133	Consisting of:— BEARING , ballrace						1	—	C	D.2
2A/9500463	SKEFKO CBA.2	HOUSING , ballrace						1	L.65	C	D.2
75	EEAS.3/D	LEVER						1	L.65	—	D.2
	E.A1.45.603	WASHER , packing						2	L.72	C	D.2
92	EEAS.4/20C	NIPPLE , 2 BA						12	S.96	C	D.2
1095	EEAS.37/14A	SLEEVE , lever mounting						1	L.65	—	D.2
	E.A1.45.173	SOCKET , mounting, elevator control to control column						1	L.65	C	D.2
6225	E.A1.45.105	SPOKE , 2 BA (Make from 28R/6124)						6	S.96	LM	D.2
	EEAS.38/2A	TUBE , torque, connecting socket and lever, 2" o/d. x 14 SWG						1	L.62	—	D.2
	E.A1.45.171	Attaching parts for E.A1.45.125:— Bolt						1	—	C	D.2
1021	E.A1.45.1153	Nut, 3/8" BSF						1	—	C	
28M/1011476	A27/JS	Pin, split						1	—	C	
28P/9527619	SP.90/C7										
1439243	E.A3.45.539	CONTROL, ELEVATOR, ASSEMBLY (S.O.O.) (MOD. 4496)						1	—	A	
		Consisting of:— BEARING , ballrace						1	—	C	
2A/9500426	HOFFMANN T.33	DIAPHRAGM , ballrace housing, mounting						1	—	C	
16283	E.A1.45.177	HOUSING , ballrace						1	L.65	C	
6227	E.A1.45.175	LEVER , assembly						1	—	B	
1439312	E.A3.45.523	Consisting of:— BEARING , ballrace						1	—	C	
2A/9500463	SKEFKO CBA.2	HOUSING , ballrace						1	L.65	C	
75	EEAS.3/D	LEVER						1	—	—	
	E.A3.45.519	RING , clamp						1	L.72	C	
1439238	E.A3.45.515	Attaching parts for E.A3.45.515:— Bolt, 2 BA						8	—	C	
28D/9709461	AS.1242/3C	Nut, 2 BA						8	—	C	
28M/5808573	A27/CS	Pin, split						8	—	C	
28P/9486478	SP.90/C5	Washer						8	—	C	
28W/94*9475	SP.15/C										

**CONTROLS, FLYING
FLYING CONTROLS IN COCKPIT**

Ref. No.	Part No.	Description	No. off	Matl Spec.	Cl. of Equip.	Plate No.
					M.R. L.M.	
1439239	E.A3.45.517	RING , clamp	1	—	C	
		Attaching parts for E.A3.45.517:—				
28D/1013178	AS.1242/5E	Bolt, 2 BA	8	—	C	
28N/1011467	A27/ES	Nut, 2 BA	8	—	C	
28P/9486478	SP.90/C5	Pin, split	8	—	C	
28W/9419487	SP.16/E	Washer	8	—	C	
	E.A1.45.173	SLEEVE , lever, mounting	1	L.65	—	
		Attaching parts for E.A1.48.173:—				
28D/1213439	A59/22G	Bolt, 1/8"	3	—	C	
28M/14537	A27/GS	Nut, 1/8"	3	—	C	
28P/9486478	SP.90/C5	Pin, split	3	—	C	
28W/14187	AS.1903/G16	Washer	3	—	C	
28W/9419488	SP.16/G	Washer	3	—	C	
6225	E.A1.45.105	SOCKET , mounting, elevator control to control column	1	L.65	C	
		Attaching parts for E.A1.45.105:—				
28D/1213439	A59/22G	Bolt	3	—	C	
28N/5808571	A27/GS	Nut	3	—	C	
28P/9486478	SP.90/C5	Pin, split	3	—	C	
28W/14181	AS.1903/G16	Washer	3	—	C	
28W/9419488	SP.16/G	Washer	3	—	C	
	E.A1.45.171	TUBE , torque, connecting socket and lever, 2" o/d. x 14 SWG	1	T.4	—	
		Attaching parts for E.A3.45.539:—				
1021	E.A1.45.1153	Bolt	1	—	C	
28M/1011476	A27/JS	Nut, 3/8" BSF	1	—	C	
28P/9527619	SP.90/C7	Pin, split	1	—	C	
5X/3275	CZ.26808	COVER , terminal block	1	—	C	
5X/1373	Z.11384	FERRULE , cut	2	—	C	
77	E.A1.45.1025	FORK-END	1	5.96	C	D.2
		Attaching parts for E.A1.45.1025:—				
1572	EEAS.37/1A	Nipple	4	5.96	C	D.2
	EEAS.38/1A	Spoke: (Make from 28R/6123)	2	5.96	LM	D.2
	E.A6.45.267	GEAR , bevel (Supplied with Tube E.A1.45.971 to spares Drg. No. E.A9.00.159 Ref. 38087)	1	—	—	D.2
5K/2887	SP.40/A4	GROMMET	3	—	C	
21214	E.A6.45.265	HOUSING , control column	1	5.96	C	D.2
6190	E.A1.45.1059	LABEL , "quadrant to mesh centrally with control unit"	1	—	C	
22262	E.B6.45.37	LABEL	1	—	C	
32543	E.B6.45.61	LEVER , brake	1	Mg. Alloy	A	D.2
		Attaching parts for E.B6.45.61:—				
28N/1045680	AGS.899/2	Collar	2	—	C	
28P/7119888	SP.4Y/B14	Pin, shackle	1	—	C	
28P/841	SP.4Y/B15	Pin, shackle	1	—	C	
28P/9486478	SP.90/C5	Pin, split	2	—	C	
28W/9419475	SP.15/C	Washer	1	—	C	

**CONTROLS, FLYING
FLYING CONTROLS IN COCKPIT**

Ref. No.	Part No.	1	2	3	4	5	6	Description	No. off	Matl Spec.	Cl. of Equip.	Plate No.
											M.R.	
												L.M.
1132	E.A6.45.215							LEVER, BRAKE CABLE, OPERATING ASSEMBLY	1	—	B/MR	D.2
								Consisting of:—				
1134	E.A6.45.217							CAP , for collar	1	DTD.126	C	D.2
1133	E.A6.45.219							COLLAR , fulcrum pin, retaining	1	DTD.683	C	D.2
								Attaching parts for E.A6.45.215:—				
28N/1045680	AGS.899/2							Collar	2	—	C	
28P/1013002	SP.4Y/B9							Pin, shackle	2	—	C	
28P/9486478	SP.90/C5							Pin, split	2	—	C	
2890	E.A3.45.257							LUG , brake lever	1	DTD.683	C	D.2
20667	E.A6.45.249							MECHANISM, BRAKE OPERATING, ASSEMBLY	1	—	B/MR	D.2
								Consisting of:—				
1136	E.A6.45.285							PIN , fulcrum	1	S.92	C	D.2
1457	E.A6.45.255							PLUG , screwed spring, retaining	1	DTD.683	C	D.2
	E.A6.45.253							PLUNGER	1	L.65	—	D.2
	E.A6.45.251							SHAFT	1	S.96	—	D.2
80	E.A1.45.679							SPRING	1	S.201	C	D.2
1455	E.A6.45.269							NUT , clamp, ballrace, retaining	1	DTD.683	C	D.2
1456	E.A6.45.271							NUT , clamp, ballrace, retaining	1	DTD.683	C	D.2
1454	E.A6.45.263							NUT , clamp, ballrace, retaining bevel gear	1	DTD.683	C	D.2
	E.A1.45.153							PLATE , cover at bottom casting	2	L.72	—	D.2
								Attaching parts for E.A1.45.153:—				
28S/9419435	A31/B12							Screw, 4 BA	1	—	C	
28W/9416642	SP.47/B							Washer, spring	1	—	C	
2020	E.A6.45.273							PLATE , cover, brake mechanism	1	DTD.683	C	D.2
								Attaching parts for E.A6.45.273:—				
28S/1200053	A33/C16							Screw	4	—	C	
	EEAS.27/8/4B							Shim	4	—	C	D.2
	or											
343	E.A1.31.277											
22261	E.B6.45.33							PLATE , cover, top assembly brake mechanism, access	1	—	C	D.2
								Attaching parts for E.B6.45.33:—				
28S/9419435	A31/B12							Screw, 4 BA	4	—	C	
	EEAS.27/8/4B							Shim	4	—	C	D.2
	or											
343	E.A1.31.277											
2018	E.A3.45.259							PLATE , lock, brake	1	L.72	C	D.2
2019	E.A3.45.261							PLATE , ring, brake mechanism, retaining	1	L.72	C	D.2
								Attaching parts for E.A3.45.261:—				
28D/1212792	AS.1248/8C							Bolt, 2 BA	3	—	C	
28M/9433473	AGS.2002/C/1							Nut, 2 BA	3	—	C	
1025	EEAS.1/1C							Screw, 2 BA	4	—	C	D.2
33389	E.B6.81.3115							PLATE , switch, F.95 camera	1	L.72	C	
								Attaching parts for E.B6.81.3115:—				
28S/9419435	A31/B12							Screw, 4 BA	3	—	C	
28W/9419401	SP.10/B							Washer	3	—	C	
28W/9416642	SP.47/B							Washer	3	—	C	
1441	E.A6.45.287							PLUNGER , brake mechanism, operating	1	L.65	C	D.2
2021	E.A3.45.265							RING , locking, brake mechanism	1	DTD.683	C	D.2
28S/1214830	4100 No. 2 x $\frac{5}{8}$							SCREW , conduit clamping	2	—	C	
5X/1005131	Z.49428							SLEEVE	3	—	C	
89	E.A1.45.123							SOCKET , conduit	1	L.65	C	D.2

**CONTROLS, FLYING
FLYING CONTROLS IN COCKPIT**

Ref. No.	Part No.	1 2 3 4 5 6						Description	No. off	Matl Spec.	Cl. of Equip.	Plate No.
											M.R. L.M.	
5X/4500101	508/1/03969							SOCKET, size B	1	—	C	
5X/4500105	508/1/03973							SOCKET, size B	1	—	C	
88	E.A1.45.1029							SPHERE, control column, locking	1	DTD.265	C	
2022	E.A3.45.263							SPRING, locking plate, compression	1	S.201	C	D.2
18197	E.B6.81.859							STOP, air brake switch overshoot, assembly	1	—	C	D.2
	HELLERMANN											
5F/9434857	HV.3341							STRAP	QR	—	C	
	HELLERMANN											
5F/9138822	NY.3342							STUD	1	—	C	
21211	E.A1.45.87							SUPPORT, CONTROL COLUMN, CASTING, ASSEMBLY (PRE-MODS. 5028 & 4956)	1	—	A/MR	
6119143	E.A3.45.695							SUPPORT, CONTROL COLUMN, CASTING, ASSEMBLY (MOD. 5028) (PRE-MOD. 4956)	1	—	A/MR	
								Consisting of:—				
2A/9500419	HOFFMANN T.17							BEARING, ballrace, main control column	2	—	C	D.2
2A/9500422	HOFFMANN T.25							BEARING, ballrace, between sleeve and support casting	2	—	C	D.2
20666	E.A1.45.93							CASTING, control column support (Pre-Mod. 5028)	1	DTD.289	A/MR	D.2
	E.A3.45.711							CASTING, control column support (Mod. 5028)	1	—	—	
91	E.A1.45.1027							FORK-END	1	S.96	C	D.2
1975	E.A1.45.961							LEVER, AILERON, OPERATING, ASSEMBLY	1	—	B	D.2
								Consisting of:—				
2A/9500463	SKEFKO CBA.2							BEARING, ballrace	1	—	C	D.2
28G/4070244	AGS.798/E							EYE-BOLT	1	—	C	
								Attaching parts for AGS.798/E:—				
2914	E.A1.45.483							Collar	1	L.64	C	D.2
28M/1011475	A27/EP							Nut, 1/4" BSF	1	—	C	
75	EEAS.3/D							HOUSING, ballrace	1	L.65	C	D.2
6188	E.A1.45.959							LEVER, operating	1	DTD.683	C	D.2
92	EEAS.4/20C							WASHER, packing	4	L.72	C	D.2
								Attaching parts for E.A1.45.961:—				
90	E.A1.45.1033							Bolt, special	3	S.96	C	D.2
28D/1007976	AS.1242/4C							Bolt, 2 BA	1	—	C	
28M/9403520	A27/CP							Nut, 2 BA	4	—	C	
28W/9419475	SP.15/C							Washer	1	—	C	
1572	EEAS 37/1A							NIPPLE	4	S.96	C	D.2
28M/1006473	A27/CT							NUT, 2 BA	2	—	C	
21483	E.A1.45.103							SLEEVE, sprocket mounting	1	L.65	C/MR	D.2
	EEAS 38/1A							SPOKE (Make from Ref. 28R/6123)	2	S.96	LM	D.2
	E.A1.45.619							SPROCKET	1	L.65	—	D.2
41436	E.A1.45.165							STUD, mounting	2	DTD.126A	C	D.2
6189	E.A1.45.993							TUBE, distance, between sprocket and casting	1	L.62	C	D.2
	E.A3.45.5095							SUPPORT, CONTROL COLUMN, CASTING, ASSEMBLY (MOD. 4956) (PRE-MOD. 5028)	1	—	—	
	E.A3.45.5097							SUPPORT, CONTROL COLUMN, CASTING, ASSEMBLY (MODS. 4956 & 5028)	1	—	—	
								Spares for these assemblies are identical to assemblies Pt. No. E.A1.45.87 and E.A3.45.695 except for the following deletions and additions				
								Delete:—				
1572	EEAS.37/1A							NIPPLE, 6 BA	4	S.96	C	
21483	E.A1.45.103							SLEEVE, sprocket mounting	1	L.65	C/MR	
	EEAS 38/1A							SPOKE	2	S.96	LM	

**CONTROLS, FLYING
FLYING CONTROLS IN COCKPIT**

Ref. No.	Part No.							Description	No. off	Matl Spec.	Cl. of Equip. M.R. L.M.	Plate No.
		1	2	3	4	5	6					
6330	E.A3.45.173							BRACKET , upper pulley	1	L.72	C	D.3
								Attaching parts for E.A3.45.173:—				
28D/9436920	A25/1C							Bolt, 2 BA	2	—	C	
28M/9403520	A27/CP							Nut, 2 BA	2	—	C	
12224	E.A3.45.463							GUIDE , cable	1	S.92	C	D.3
								Attaching parts for E.A3.45.463:—				
28D/1007971	A25/1B							Bolt, 4 BA	1	—	C	
28D/9140638	A25/4B							Bolt, 4 BA	1	—	C	
28W/9419465	SP.13/B							Washer	2	—	C	
12225	E.A3.45.459							PULLEY , assembly, at control column ...	1	—	C	D.3
								Attaching parts for E.A3.45.459:—				
28D/1011242	A25/7E							Bolt, 1/4" BSF	1	—	C	
12226	E.A3.45.469							Washer	2	DTD.683	C	D.3
28R/13502	AS.111							PULLEY	1	—	C	
								Attaching parts for AS.111:—				
28D/1011240	A25/5E							Bolt, 1/4" BSF	1	—	C	
28M/1011467	A27/ES							Nut, 1/4" BSF	1	—	C	
28P/9527619	SP.90/C7							Pin, split	1	—	C	
28W/9418921	SP.13/E							Washer	1	—	C	
101	E.A3.45.63							LEVER and sprocket assembly	1	—	C	D.3
6805	E.A3.45.253							PEDALS, PILOT'S, RUDDER CONTROL, ASSEMBLY	1	—	A	D.3
								Spares for:—				
	AS.2183							ARM RUDDER BAR ASSEMBLY	2	—	—	D.3
								Spares for:—				
25512	AS.2187							EYE-BOLT	1	—	C	
								Attaching parts for AS.2187:—				
28M/4095917	A24/JS							Nut, 3/8" BSF	1	—	C	
28P/9527619	SP.90/C7							Pin, split	1	—	C	
								Attaching parts for AS.2183:—				
12069	AS.2180							Bush, upper	1	—	C	D.3
12067	AS.2226							Bush, lower	1	—	C	D.3
12389	AS.2224							Cap, nut	1	—	C	D.3
28P/9525532	SP.90/E10							Pin, split	1	—	C	
	AS.2181							Shim	1	—	—	
2A/9500420	†							BEARING , ballrace	1	—	C	
22419	AS.2175							CAP , worm adjusting	2	—	C	D.3
22420	AS.2178							COLLAR , worm adjusting	1	—	C	D.3
								Attaching parts for AS.2178:—				
28P/1011123	AGS 859/24							Pin, taper	1	—	C	
12070	AS.2231							LINK , adjusting	4	—	C	D.3
								Attaching parts for AS.2231 (per pair):—				
12068	AS.2196							Bolt, special	2	—	C	D.3
6815	AS.2197							Nut, special	2	—	C	D.3
28P/9486478	SP.90/C5							Pin, split	2	—	C	
12071	AS.2206							LINK-BAR , assembly	2	—	C	D.3
								Attaching parts for AS.2206 (per pair):—				
12062	AS.2202							Bolt, pivot	1	—	C	D.3
12066	AS.2203							Bolt, pivot	2	—	C	D.3
28M/1013107	A24/C5							Nut, 2 BA	3	—	C	
28M/1010998	A24/EP							Nut, 1/4" BSF	3	—	C	
28P/9486478	SP.90/C5							Pin, split	3	—	C	
28W/9128924	SP.14/C							Washer	3	—	C	
28W/9419405	SP.15/E							Washer	3	—	C	

**CONTROLS, FLYING
FLYING CONTROLS IN COCKPIT**

Ref. No.	Part No.	Description						No. off	Matl Spec.	Cl. of Equip. M.R. L.M.	Plate No.
		1	2	3	4	5	6				
12863	AS.2198	PEDAL, ASSEMBLY (PRE-MOD. 5100) ...						1	—	C	D.3
	AS.46745	PEDAL, ASSEMBLY (ALT. R60/49 — MOD. 5100)						1	—	—	
		Spares for:—									
	AS.2219	PLATE, foot						1	—	—	
12584	AS.4568	STIRRUP (Pre-Mod. 5100)						1	—	C	D.3
6119288	AS.46744	STIRRUP (Alt. R60/49 — Mod. 5100) ...						1	—	C	
		Attaching parts for plate and stirrup:—									
28D/1215160	AS.4565/2C	Bolt, 2 BA						4	—	C	
28M/4095911	A29/CP	Nut, 2 BA						4	—	C	
12864	AS.2199	PEDAL, ASSEMBLY (PRE-MOD. 5100) ...						1	—	C	D.3
	AS.46746	PEDAL, ASSEMBLY (ALT. R60/49 — MOD. 5100)						1	—	—	
		Spares for:—									
	AS.2219	PLATE, foot						1	—	—	
12584	AS.4568	STIRRUP (Pre-Mod. 5100)						1	—	C	D.3
6119288	AS.46744	STIRRUP (Alt. R60/49 — Mod. 5100) ...						1	—	C	
		Attaching parts for plate and stirrup:—									
28D/1215160	AS.4565/2C	Bolt, 2 BA						4	—	C	
28M/4095911	A29/CP	Nut, 2 BA						4	—	C	
		Attaching parts for pedal assembly:—									
12065	AS.2209	Bolt, pivot						1	—	C	D.3
28M/4095917	A24/JS	Nut, $\frac{3}{8}$ " BSF						1	—	C	
22423	AS.2210	Piece, distance						2	—	C	D.3
28P/9527619	SP.90/C7	Pin, split						1	—	C	
25511	AS.2191	PEDESTAL						1	—	C	D.3
22422	AS.2189	PLATE, support						1	—	C	D.3
		Attaching parts for AS.2189:—									
28D/9436920	A25/1C	Bolt, 2 BA						4	—	C	
22424	AS.2242	Washer, tab						1	—	C	D.3
22421	AS.2179	PLATE, wheel adjustment						1	—	C	
5803	AS.2412	SLEEVE, screwed						1	—	B	D.3
	AS.2411	WORM, adjusting (supplied in pairs) ...						1	—	—	D.3
		Attaching parts for AS.2412 and AS.2411:—									
12849	AS.3399	Bolt, taper						2	—	C	D.3
28M/4095894	A24/ES	Nut, $\frac{1}{2}$ " BSF						2	—	C	
28P/9527619	SP.90/C7	Pin, split						2	—	C	
12973	AS.3398	Washer						2	—	C	D.3
22198	AS.2188	SPINDLE, centre						1	—	C	D.3
12072	AS.2177	WHEEL, adjusting						1	—	C	D.3
	E.A.3.45.249	UNIT, BRAKE CONTROL, ASSEMBLY ...						1	—	—	
		Spares for:—									
	E.A.3.45.251	BRACKET, support						1	L.72	—	D.3
		Attaching parts for E.A.3.45.251:—									
28D/9436920	A25/1C	Bolt, 4 BA						6	—	C	
2025	E.A.3.45.189	CAM, plate guide						1	DTD.5044	C	D.3
		Attaching parts for E.A.3.45.189:—									
28D/1200119	A25/4C	Bolt, 2 BA						2	—	C	
28D/1007976	AS.1242/4C	Bolt, 2 BA						1	—	C	
28W/9416643	SP.47/C	Washer, spring						2	—	C	
2026	E.A.3.45.191	LEVER, brake valve operating ...						1	S.96	C	D.3
		Attaching parts for E.A.3.45.191:—									
28D/7002428	A25/6C	Bolt, 2 BA						1	—	C	
28M/5808573	A27/CS	Nut, 2 BA						1	—	C	
28P/9527619	SP.90/C7	Pin, split						1	—	C	

**CONTROLS, FLYING
FLYING CONTROLS IN COCKPIT**

Ref. No.	Part No.	Description	No. off	Matl Spec.	Cl. of Equip.	Plate No.
					M.R. L.M.	
5166	E.A3.45.193	LINK, TIE, BETWEEN VALVE OPERATING LEVER AND RUDDER CONTROL LEVER, ASSEMBLY Consisting of:—	1	—	C	D.3
6051298	E.A3.45.187	FORK-END	1	—	C	
28K/4070324	SP.3Y/413L	FORK-END	1	—	C	
28M/1006473	A27/CT	NUT, 2 BA	1	—	C	
28M/4095891	A27/CTL	NUT, 2 BA, L.H. thread	1	—	C	
	E.A3.45.193A	ROD	1	—	—	
		Attaching parts for E.A3.45.193:—				
28N/1045680	AGS.899/2	Collar	2	—	C	
2027	E.A3.45.195	Pin, special	1	S.96	C	D.3
28P/1207870	SP.4Y/B11	Pin, shackle	1	—	C	
28P/9527619	SP.90/C7	Pin, split	2	—	C	
28W/9419475	SP.15/C	Washer	1	—	C	
	E.A3.45.5227	PEDALS, PILOT'S RUDDER CONTROL BAR, ASSEMBLY (MOD. 4956) (For Aircraft Embodying Mod. 5100) Spares for this assembly are identical to assembly Pt. No. E.A3.45.7 on page DF.5 except for the following deletions and additions Delete:—	1	—	—	
97	E.A3.45.57	BEARING , assembly, lower	1	—	C	
101	E.A3.45.63	LEVER and sprocket, assembly	1	—	C	
		Add:—				
6119255	E.A3.45.5085	BEARING , assembly, lower	1	—	C	
		Attaching parts for E.A3.45.5085:—				
28D/9709461	AS.1242/3C	Bolt, 2 BA	8	—	C	
28M/5808573	A27/CS	Nut, 2 BA	8	—	C	
28P/9486478	SP.90/C5	Pin, split	8	—	C	
	E.A3.45.5089	Ring, clamp	1	L.65	—	
28W/9419402	SP.13/C	Washer	8	—	C	
6119302	E.A3.45.5073	LEVER and sprocket, assembly (Superseded by E.A3.45.5075)	1	—	C	
6119254	E.A3.45.5075	LEVER and boss, assembly (Preferred spare to E.A3.45.5073)	1	—	C	
		Attaching parts for E.A3.45.5073 or E.A3.45.5075:—				
6119304	EEAS.95/16G	Bolt, 3/8" BSF	2	—	C	
28M/5808571	A27/GS	Nut, 3/8" BSF	2	—	C	
28P/1040788	SP.90/C8	Pin, split	2	—	C	
28W/7133583	AS.1903/G12	Washer, saddle, top bolt	2	—	C	
6119303	E.A3.45.5091	Washer, saddle, bottom bolt	2	—	C	
28W/9419403	SP.13/G	Washer	2	—	C	
96	E.A1.45.477	SPRING , tension, between aileron control and tension lever	1	DTD.215	C	
	E.A3.45.477	COVER, PRESSURE BOX, ASSEMBLY Spares for:—	1	—	—	
21349	E.A3.45.479	COVER , access	1	—	B	D.1
21348	E.A3.45.475	PANEL	1	—	B	D.1

**CONTROLS, FLYING
FLYING CONTROLS IN COCKPIT**

Ref. No.	Part No.	Description	No. off	Matl Spec.	Cl. of Equip.	Plate No.
					M.R. L.M.	
		1 2 3 4 5 6				
	E.A3.45.21	MOUNTING, AILERON, ELEVATOR AND RUDDER LEVERS AT PRESSURE BULKHEAD, ASSEMBLY	1	—	—	D.1
		Spares for:—				
8195	E.A3.45.121	BAR , stop, top	1	DTD.300	C	D.4
8196	E.A3.45.123	BAR , stop, bottom	1	DTD.300	C	D.4
		Attaching parts for E.A3.45.121 and E.A3.45.123:—				
28D/9140644	A25/9C	Bolt, 2 BA	4	—	C	
28M/1278190	AGS.2001/C/1	Nut, 2 BA	4	—	C	
28W/9419404	SP.16/C	Washer	4	—	C	
		BOLT , stop, control levers (Make from A.25/16j)	5	—	C	D.4
1535	E.A3.45.27	BOLT , stop, elevator, at pressure bulkhead ...	1	S.96	C	D.4
1534	E.A1.45.1207	BRACKET , stop, bar	6	—	C	
8197	E.A3.45.125	BRACKET , stop, bar	2	—	C	
8198	E.A3.45.255	Attaching parts for E.A3.45.125 and E.A3.45.255:—				
28D/9133011	A25/2C	Bolt, 2 BA	2	—	C	
	or					
28D/1214091	AS.1242/2C	Bolt, 2 BA	2	—	C	
28M/1278190	AGS.2001/C/1	Nut, 2 BA	2	—	C	
28W/9419404	SP.16/C	Washer	2	—	C	
		CASING , lever, control	1	—	B	D.4
3878	E.A3.45.23	LEVER, CONTROL, ASSEMBLY (PRE-MOD. 4489)	1	—	B	D.4
109	E.A1.45.343	LEVER, CONTROL, ASSEMBLY (S.O.O.) (MOD. 4489)	1	—	B	D.4
1439156	E.A3.45.537	Spares for:—				
		END-PIECE , control lever, mounting	2	L.65	C	D.4
		Attaching parts for E.A1.45.361:—				
28D/9133011	A25/2C	Bolt, 2 BA (Pre-Mod. 4489)	5	—	C	
28D/9133011	A25/2C	Bolt, 2 BA (Mod. 4489)	2	—	C	
28D/1007319	AS.1242/4C	Bolt, 2 BA, c's'k head (Mod. 4489)	3	—	C	
28M/1278190	AGS.2001/C/1	Nut, 2 BA	5	—	C	
1439241	E.A3.45.535	Packing (Mod. 4489)	1	L.72	C	
28W/9457834	SP.124/D	Washer (Mod. 4489)	2	—	C	
28W/5806694	SP.125/D	Washer (Mod. 4489)	3	—	C	
28W/9419475	SP.15/C	Washer (Pre-Mod. 4489)	5	—	C	
		HOUSING	1	DTD.289	C	D.4

Ref. No.	Part No.	1 2 3 4 5 6	Description	No. off	Matl Spec.	Cl. of Equip. M.R. L.M.	Plate No.

**CONTROLS, FLYING
FLYING CONTROLS IN COCKPIT**

Ref. No.	Part No.	Description						No. off	Matl Spec.	Cl. of Equip. M.R. L.M.	Plate No.
		1	2	3	4	5	6				
112	E.A1.45.345	LEVER , c/w ballrace						6	—	C	D.4
		Attaching parts for E.A1.45.345 (Per pair):—									
2739	EEAS.13/2	Bolt: (Pre-Mod. 4489)						4	S.96	C	D.4
28D/1215686	A59/7E	Bolt: 1/2" BSF (Mod. 4489)						4	—	C	
111	E.A1.45.367	Dowel:						1	S.1	C	D.4
28M/9480017	AGS.2001/E1/66	Nut: 1/2" BSF						4	—	C	
28W/9419487	SP.16/E	Washer (Pre-Mod. 4489)						4	—	C	
28W/9471273	SP.124/E	Washer (Mod. 4489)						4	—	C	
1948	E.A1.45.351	RING , sealing, outboard						1	L.45	C	D.4
1949	E.A1.45.353	RING , sealing, centre						1	L.45	C	D.4
1950	E.A1.45.355	RING , sealing, inboard						1	L.45	C	D.4
		Attaching parts for E.A1.45.343 or E.A3.45.537:—									
28D/1200119	A25/4C	Bolt: 2 BA						2	—	C	
28D/9133012	A25/3C	Bolt: 2 BA						6	—	C	
28M/1278190	AGS.2001/C/1	Nut: 2 BA						8	—	C	
28M/1007404	A27/JT	NUT , 3/8" BSF, locking stop bolt						6	—	C	
113	E.A3.45.25	SEAL , rubber, between control lever casing and pressure bulkhead						1	—	C	D.4
15013	E.B6.45.11	MOUNTING, ELEVATOR CONTROL LEVER, ASSEMBLY (PRE-MOD. 4496)						1	—	B/MR	D.1
		Spares for:—									
2A/9500419	HOFFMANN T.17	BEARING , ballrace						2	—	C	D.1
42472	E.A3.45.103	BOBBIN , lever-mounting						1	DTD.683	C	D.1
		Attaching parts for E.A3.45.103:—									
1095	EEAS.37/14A	Nipple: 4 BA						4	S.96	C	D.1
	EEAS.38/2A	Spoke: 4 BA (Make from Ref. 28R/7135393) ...						2	S.96	LM	D.1
20692	E.A1.45.267	HOUSING , ballrace, inboard, control shaft ...						1	L.65	C	D.1
1541	E.A1.45.269	HOUSING , ballrace, outboard, control shaft ...						1	L.65	C	D.1
33897	E.A2.45.583	LEVER, ELEVATOR OPERATING, ASSEMBLY ...						1	—	B	D.1
		Consisting of:—									
2A/9500463	SKEFKO CBA.2	BEARING , ballrace						1	—	C	D.1
75	EEAS.3/D	HOUSING , ballrace bearing						1	L.65	C	D.1
	E.A2.45.581	LEVER :						1	L.65	—	D.1
92	EEAS.4/20C	WASHER , packing						2	L.72	C	D.1
		Attaching parts for E.A2.45.583:—									
12203	E.A2.45.659	Bolt						3	S.94	C	D.1
12202	E.A2.45.661	Nut						3	S.94	C	D.1
12204	E.A2.45.663	Washer						3	L.72	C	D.1
13233	E.A2.45.587	LEVER, UPPER ARM ELEVATOR OPERATING, ASSEMBLY						1	—	B	D.1
		Consisting of:—									
2A/9500463	SKEFKO CBA.2	BEARING , ballrace						1	—	C	D.1
75	EEAS.3/D	HOUSING , ballrace bearing						1	L.65	C	D.1
	E.A2.45.585	LEVER :						1	—	—	D.1
92	EEAS.4/20C	WASHER , packing						2	L.72	C	D.1
		Attaching parts for E.A2.45.587:—									
12203	E.A2.45.659	Bolt						3	S.94	C	D.1
12202	E.A2.45.661	Nut						3	S.94	C	D.1
12204	E.A2.45.663	Washer						3	L.72	C	D.1
22036	E.A1.45.271	SHAFT , control mounting						1	L.65	C	D.1

**CONTROLS, FLYING
FLYING CONTROLS IN COCKPIT**

Ref. No.	Part No.	Description						No. off	Matl Spec.	Cl. of Equip. M.R. L.M.	Plate No.
		1	2	3	4	5	6				
1439280	E.B6.45.187	MOUNTING, ELEVATOR CONTROL LEVER, ASSEMBLY (MOD. 4496-S.O.O.) Spares for this assembly are identical with those for assembly Pt. No. E.B6.45.11 on page DF.9, except for the following deletion and addition Delete:—						1	—	B/MR	
33897	E.A2.45.583	LEVER, ELEVATOR OPERATING, ASSEMBLY ...						1	—	B	
13233	E.A2.45.587	LEVER, UPPER ARM ELEVATOR OPERATING, ASSEMBLY Add:—						1	—	B	
	E.A3.45.509	ANGLE , reinforcing, 16 G						1	L.73	LM	
	E.A3.45.101	DIAPHRAGM						1	L.72	LM	
	E.A3.45.287	DIAPHRAGM						1	L.72	LM	
	E.A3.45.547	DIAPHRAGM						1	L.72	LM	
	E.A3.90.201	GUIDE , tube						1	T.4	LM	
	E.B6.45.181	LEVER, ELEVATOR OPERATING, ASSEMBLY ... (Ref. 33897 modified) Consisting of:—						1	—	—	
2A/9500463	SKEFKO CBA.2	BEARING , ballrace						1	—	C	
75	EEAS.3/D	HOUSING , ballrace bearing						1	L.65	C	
	E.B6.45.183	LEVER : (E.A2.45.581 modified)						1	L.65	—	
92	EEAS.4/20C	WASHER , packing						2	L.72	C	
		Attaching parts for E.B6.45.181:—									
28D/1212825	AS.1242/4E	Bolt, $\frac{1}{2}$ " BSF						3	—	C	
28M/1011467	A27/ES	Nut, slotted						3	—	C	
28P/9486478	SP.90/C5	Pin, split						3	—	C	
28W/9419487	SP.16/E	Washer						3	—	C	
	E.B6.45.177	LEVER, UPPER ARM ELEVATOR OPERATING, ASSEMBLY (Ref. 13233 modified) Consisting of:—						1	—	—	
2A/9500463	SKEFKO CBA.2	BEARING , ballrace						1	—	C	
75	EEAS.3/D	HOUSING , ballrace bearing						1	L.65	C	
	E.B6.45.179	LEVER : (E.A2.45.585 modified)						1	—	—	
92	EEAS.4/20C	WASHER , packing						2	L.72	C	
		Attaching parts for E.B6.45.177:—									
28D/1013178	AS.1242/5E	Bolt, $\frac{1}{2}$ " BSF						3	—	C	
28M/1011467	A27/ES	Nut, slotted						3	—	C	
28P/9486478	SP.90/C5	Pin, split						3	—	C	
28W/9419487	SP.16/E	Washer						3	—	C	
1097	EEAS.37/16A	NIPPLE , 2 BA						1	S.96	C	
	E.B6.45.185	PLATE , clamp, 10G						1	L.72	LM	
	E.A3.45.511	PLATE , stiffening, 14G						1	L.73	LM	
1439246	E.A3.45.513	RING , clamp						1	—	C	
	EEAS.38/3A	SPOKE , 2 BA (Made from 28R/4663555)						1	S.96	C	

**CONTROLS, FLYING
FLYING CONTROLS IN COCKPIT**

Ref. No.	Part No.	Description	No. off	Matl Spec.	Cl. of Equip.	Plate No.
					M.R. L.M.	
3577	E.A3.45.309	TUBE, CONTROL, INTERMEDIATE, FROM CONTROL COLUMN TO ELEVATOR LEVER AT REAR OF PRESSURE BULKHEAD, ASSEMBLY (PRE-MOD. 4930)	1	—	B	
6051410	E.A3.45.651	TUBE, CONTROL, INTERMEDIATE, FROM CONTROL COLUMN TO ELEVATOR LEVER AT REAR OF PRESSURE BULKHEAD, ASSEMBLY (MOD. 4930)	1	—	B	D.1
1683	EEAS.47/2	Spares for:— FORK-END, adjusting	1	DTD.683	C	D.1
3578	E.A3.45.339	TUBE, CONTROL, FROM CONTROL COLUMN TO AILERON CONTROL LEVER AT REAR OF PRESSURE BULKHEAD, ASSEMBLY (PRE-MOD. 4930)	1	—	B	
6051691	E.A3.45.661	TUBE, CONTROL, FROM CONTROL COLUMN TO AILERON CONTROL LEVER AT REAR OF PRESSURE BULKHEAD, ASSEMBLY (MOD. 4930)	1	—	B	D.1
	E.A3.45.329	Consisting of:— TUBE, forward portion, assembly (Pre-Mod. 4930)	1	—	—	
	E.A3.45.657	TUBE, forward portion, assembly (Mod. 4930) ...	1	—	—	
	E.A3.45.335	TUBE, AFT PORTION, ASSEMBLY (PRE-MOD. 4930)	1	—	—	
	E.A3.45.659	TUBE, AFT PORTION, ASSEMBLY (MOD. 4930)	1	—	—	
1683	EEAS.47/2	Spares for:— FORK-END, adjusting Attaching parts for E.A3.45.329 and E.A3.45.335 or E.A3.45.657 and E.A3.45.659 (per pair):—	1	DTD.683	C	D.1
28D/1012995	A25/22C	Bolt, 2 BA	2	—	C	
26614	AS.484/JA	Bush, taper shear	4	—	C/MR	
28M/5808573	A27/CS	Nut, 2 BA	2	—	C	
28P/9527619	SP.90/C7	Pin, split	2	—	C	
3581	E.A3.45.347	TUBE, CONTROL, FROM CONTROL COLUMN LEVER TO ELEVATOR LEVER AT FRAME 4, ASSEMBLY (PRE-MOD. 4930)	1	—	B	
6051693	E.A3.45.667	TUBE, CONTROL, FROM CONTROL COLUMN LEVER TO ELEVATOR LEVER AT FRAME 4, ASSEMBLY (MOD. 4930)	1	—	B	D.1
1683	EEAS.47/2	Spares for:— FORK-END, adjusting	1	DTD.683	C	D.1
3579	E.A3.45.345	TUBE, CONTROL, FROM PILOT'S RUDDER BAR TO RUDDER LEVER AT REAR OF PRESSURE BULKHEAD, ASSEMBLY (PRE-MOD. 4930)	1	—	B	
6051690	E.A3.45.665	TUBE, CONTROL, FROM PILOT'S RUDDER BAR TO RUDDER LEVER AT REAR OF PRESSURE BULKHEAD, ASSEMBLY (MOD. 4930)	1	—	B	D.1
		Consisting of:—				

**CONTROLS, FLYING
FLYING CONTROLS IN COCKPIT**

Ref. No.	Part No.	Description	No. off	Matl Spec.	Cl. of Equip.		Plate No.
					M.R.	L.M.	
		1 2 3 4 5 6					
	E.A3.45.329	TUBE, forward portion, assembly (Pre-Mod. 4930)	1	—	—		
	E.A3.45.657	TUBE, forward portion, assembly (Mod. 4930) ...	1	—	—		
	E.A3.45.341	TUBE, AFT PORTION, ASSEMBLY (PRE-MOD. 4930)	1	—	—		
	E.A3.45.663	TUBE, AFT PORTION, ASSEMBLY (MOD. 4930)	1	—	—		
1683	EEAS.47/2	Spares for:— FORK-END, adjusting Attaching parts for E.A3.45.329 and E.A3.45.341 or E.A3.45.657 and E.A3.45.663 (per pair):—	1	DTD.683	C		D.1
28D/1012995	A25/22C	Bolt, 2 BA	2	—	C		
26614	AS.484/JA	Bush, taper, shear	4	—	C/MR		
28M/5808573	A27/C5	Nut, 2 BA	2	—	C		
28P/9527619	SP.90/C7	Pin, split	2	—	C		
3580	E.A3.45.351	TUBE, CONTROL, AILERON, ELEVATOR AND RUDDER, AT REAR OF PRESSURE BULKHEAD, ASSEMBLY (PRE-MOD. 4930)	3	—	B		
6051692	E.A3.45.669	TUBE, CONTROL, AILERON, ELEVATOR AND RUDDER, AT REAR OF PRESSURE BULKHEAD, ASSEMBLY (MOD. 4930)	3	—	B		D.1
1683	EEAS.47/2	Spares for:— FORK-END, adjusting Attaching parts for control tubes:—	1	DTD.683	C		D.1
67	EEAS.13/1	Bolt, special	2	S.96	C		D.1
68	EEAS.14	Bush, bearing	2	S.96	C		D.1
3569	EEAS.63/E	Nut, special	2	S.96	C		D.1
3570	EEAS.127	Piece, distance	2	S.96	C		D.1
28P/9527619	SP.90/C7	Pin, split	2	—	C		
	E.A3.45.545	UNIT, SNATCH, ELEVATOR CONTROL, INSTALLATION (MOD. 4435)	1	—	—		
		Spares for:—					
8199	E.A1.45.609	BRACKET	1	—	C		D.1
5256	E.A3.45.437	BUSH	1	—	C		D.1
	or						
28P/9710567	O/MBEU/1806/EE	BUSH	1	—	—		D.1
	SP.90/C5	PIN, split, 1/8" dia.	1	—	C		
	E.A1.45.747	PLATE, packing	2	—	C		
3605	E.A1.45.613	STUD	1	L.65	C		D.1
	or						
	A/MBEU/1805/EE	STUD	1	—	—		D.1
		Attaching parts for E.A1.45.613 or A/MBEU/1805/EE:—					
28M/7002430	AGS.2002/E/1	Nut, thin, 1/2" BSF	2	—	C		
28W/9419405	SP.15/E	Washer	2	—	C		
5254	E.A1.45.611	SUPPORT	1	—	C		D.1
		Attaching parts for E.A1.45.611:—					
28D/1200119	A25/4C	Bolt, 2 BA	4	—	C		
28M/1278190	AGS.2001/C/1	Nut, 2 BA	4	—	C		
27L/1482205	MARTIN BAKER MBCJ/2106	UNIT, snatch	1	—	A		D.1

**CONTROLS, FLYING
FLYING CONTROLS IN REAR FUSELAGE**

Ref. No.	Part No.	Description	No. off	Matl Spec.	Cl. of Equip.	Plate No.
					M.R. L.M.	
	E.A3.45.385	CONTROLS, FLYING, IN REAR FUSELAGE, ASSEMBLY	—	—	—	
	E.A1.45.601	Spares for:— LEVERS, CONTROL, AND MOUNTING OF BRACKETS AT FRAME 42, ASSEMBLY	1	—	—	
991	E.A1.45.1193	Spares for:— LEVER, CONTROL, ELEVATOR, ASSEMBLY ...	1	—	A	D.6
2A/9500410	HOFFMANN CS.1	Spares for:— BEARING, ballrace, centre	2	—	C	D.6
2A/9500463	SKEFKO CBA.2	BEARING, ballrace	2	—	C	D.6
	E.A1.45.573	BOBBIN, mounting for lever	1	L.65	C	D.6
21671	E.A1.45.577	BUSH, distance, between centre ballraces ...	1	L.65	C	D.6
75	EEAS.3/D	HOUSING, ballrace	2	L.65	C	D.6
	E.A1.45.1191	LEVER	1	—	—	D.6
		Attaching parts for E.A1.45.1191:—				
28D/1200119	A25/4C	Bolt; 2 BA	4	—	C	
28M/9403520	A27/CP	Nut; 2 BA	4	—	C	
28V/9419404	SP.16/C	Washer	4	—	C	
92	EEAS.4/20C	WASHER, packing	4	L.72	C	D.6
		Attaching parts for E.A1.45.1193:—				
2740	EEAS.13/6	Bolt; special	1	S.96	C	D.6
28M/7683	AGS.572/A	Nut; 1/2" BSF	1	—	C	
28P/9527619	SP.90/C7	Pin; split	1	—	C	
28V/9419405	SP.15/E	Washer	1	—	C	
319	E.A1.45.561	LEVER, CONTROL, RUDDER, ASSEMBLY ...	1	—	B	D.6
		Spares for:—				
2A/9500410	HOFFMANN CS.1	BEARING, ballrace	2	—	C	D.6
34140	E.A1.45.575	BOBBIN, mounting, and ballrace housing ...	1	L.65	C	D.6
21671	E.A1.45.577	BUSH, distance, between ballraces	1	L.65	C	D.6
34010	E.A1.45.569	LUG, end, complete with ballraces	2	—	C	D.6
		Attaching parts for E.A1.45.561:—				
2741	EEAS.13/7	Bolt; special	1	S.96	C	D.6
28M/7683	AGS.572/A	Nut; 1/2" BSF	1	—	C	
28P/9527619	SP.90/C7	Pin; split	1	—	C	
28V/9419405	SP.15/E	Washer	1	—	C	
10994	E.A1.45.499	SUPPORT, CONTROL TUBES, AT FRAME 35, ASSEMBLY	1	—	B	D.6
		Spares for:—				
2035	FAIREY AVIATION FS.515	BEARING, roller	2	—	B	D.5
	E.A1.45.501	SUPPORT, CONTROL TUBES, AT FRAME 37, GROUP	1	—	—	D.6
		Spares for:—				
2035	FAIREY AVIATION FS.515	BEARING, roller	2	—	B	D.5
2141	E.A3.45.267	TUBE, CONTROL, ELEVATOR AND RUDDER, LETTERED "DO NOT HANDLE", BETWEEN FRAMES 318 AND 35, ASSEMBLY (PRE-MOD. 4930)	2	—	C	D.6
		Spares for:—				
5058	E.A3.45.297	TRANSFER, waterslide	1	—	C	
3584	E.A3.45.375	TUBE, control	1	—	C	

**CONTROLS, FLYING
FLYING CONTROLS IN REAR FUSELAGE**

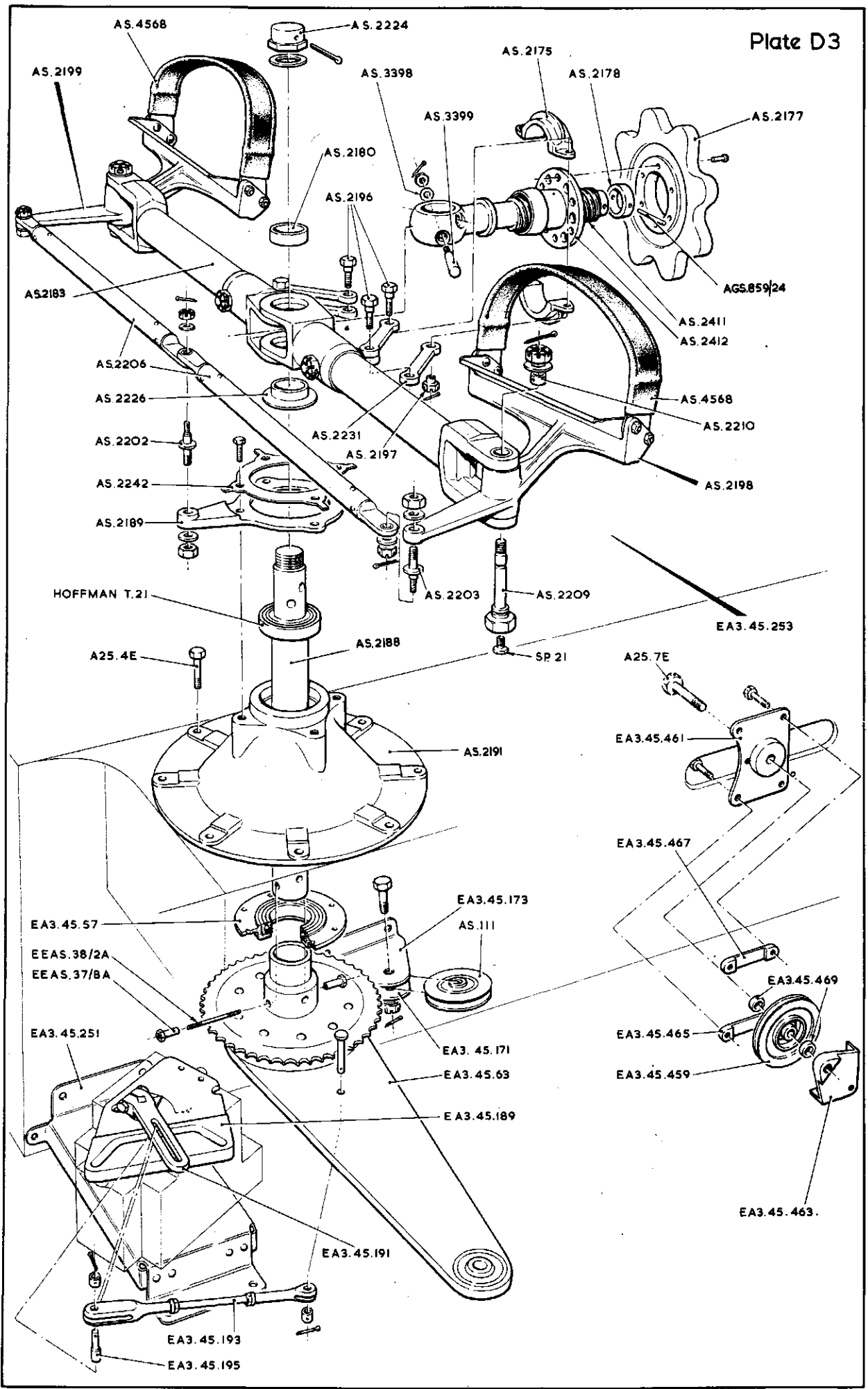
Ref. No.	Part No.	Description	No. off	Matl Spec.	Cl. of Equip.	Plate No.
					M.R. L.M.	
6051425	E.A3.45.649	TUBE, CONTROL, ELEVATOR AND RUDDER, LETTERED "DO NOT HANDLE", BETWEEN FRAMES 31B AND 35, ASSEMBLY (MOD. 4930)	2	—	B	
		Spares for:—				
6051416	E.A3.45.681	TUBE, control, assembly	1	—	B	
3584	E.A3.45.375	TUBE, control, elevator and rudder, between frames 34 and 38, assembly (Pre-Mod. 4930)	2	—	B	D.6
6051416	E.A3.45.681	TUBE, control, elevator and rudder, between frames 34 and 38, assembly (Mod. 4930)	2	—	B	
3588	E.A3.45.317	TUBE, CONTROL, ELEVATOR, FROM CONTROL ARM TO ELEVATOR, ASSEMBLY (PRE-MOD. 4930)	1	—	B	D.6
6051423	E.A3.45.653	TUBE, CONTROL, ELEVATOR, FROM CONTROL ARM TO ELEVATOR, ASSEMBLY (MOD. 4930)	1	—	B	
		Spares for:—				
1683	EEAS.47/2	FITTING, adjuster	1	DTD.683	C	D.6
28M/13879	A29/NP	NUT, locking, 1/2" BSF	1	—	C	
4620	E.A3.45.387	TUBE, CONTROL, ELEVATOR, BETWEEN FRAMES 37 AND 42, ASSEMBLY (PRE-MOD. 4930)	1	—	C	D.6
	E.A3.45.683	TUBE, CONTROL, ELEVATOR, BETWEEN FRAMES 37 AND 42, ASSEMBLY (MOD. 4930)	1	—	—	
		Spares for:—				
1683	EEAS.47/2	FITTING, adjuster	1	DTD.683	C	D.6
28M/13879	A29/NP	NUT, locking, 1/2" BSF	1	—	C	
21073	E.A3.45.115	TUBE, CONTROL, RUDDER, FROM CONTROL ARM TO FRAME 38, ASSEMBLY (PRE-MOD. 4930)	1	—	B	D.6
	E.A3.45.647	TUBE, CONTROL, RUDDER, FROM CONTROL ARM TO FRAME 38, ASSEMBLY (MOD. 4930)	1	—	—	
		Spares for:—				
1683	EEAS.47/2	FITTING, adjuster	1	DTD.683	C	D.6
28M/13879	A29/NP	NUT, locking, 1/2" BSF	1	—	C	
3589	E.A3.45.393	TUBE, CONTROL, FROM RUDDER TO CONTROL ARM, ASSEMBLY (PRE-MOD. 4930)	1	—	B	D.6
6051424	E.A3.45.685	TUBE, CONTROL, FROM RUDDER TO CONTROL ARM, ASSEMBLY (MOD. 4930)	1	—	B	
		Spares for:—				
1683	EEAS.47/2	FITTING, adjuster	1	DTD.683	C	D.6
28M/13879	A29/NP	NUT, locking, 1/2" BSF	1	—	C	
		Attaching parts for control tubes:—				
67	EEAS.13/1	Bolt, special	2	S.96	C	D.6
68	EEAS.14	Bush, bearing	2	S.96	C	D.6
3569	EEAS.63/E	Nut, special	2	S.96	C	D.6
3570	EEAS.127	Piece, distance	2	S.96	C	D.6
28P/9527619	SP.90/C7	Pin, split	2	—	C	



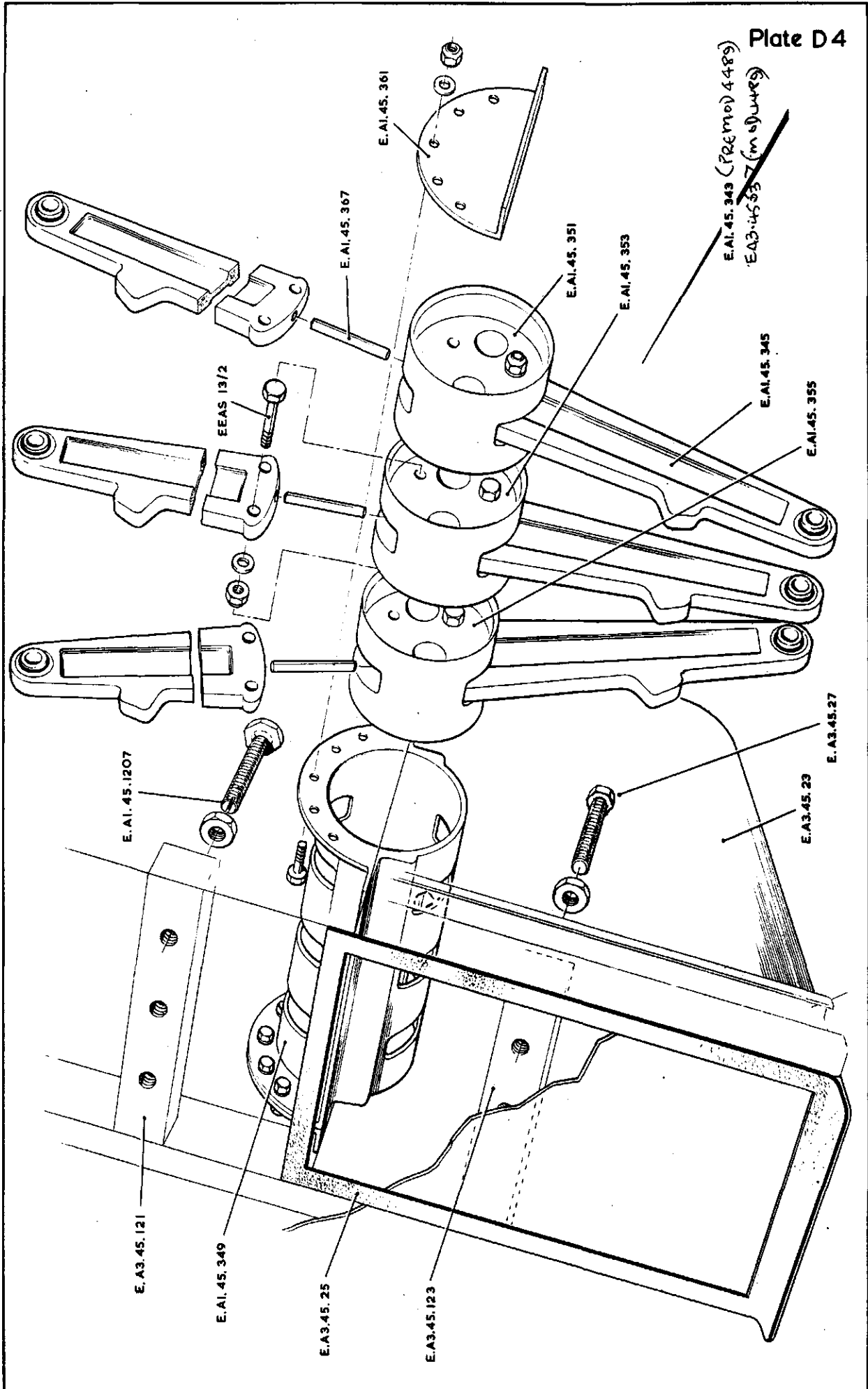
CONTROLS FLYING, FRONT FUSELAGE

RESTRICTED

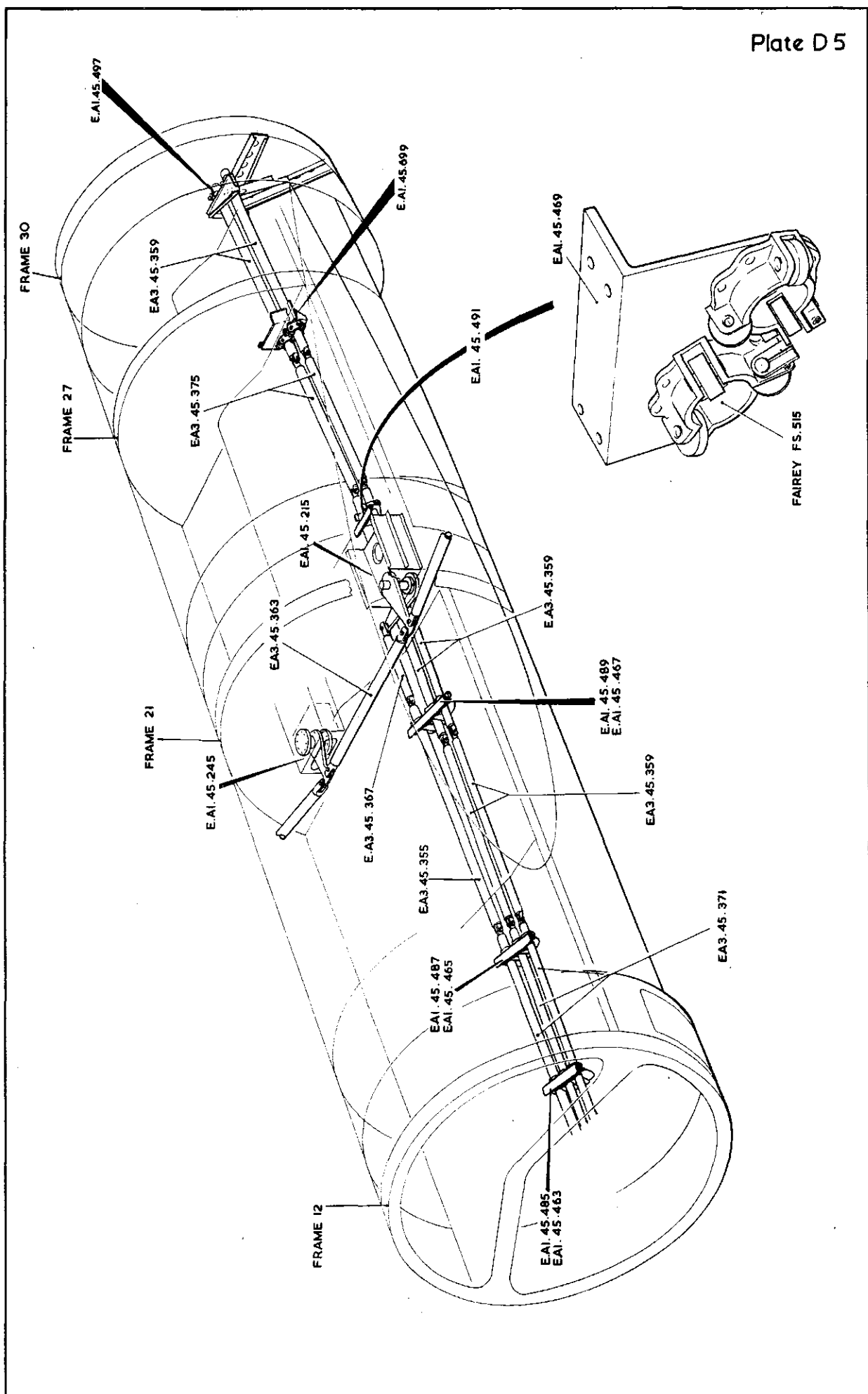
Plate D3



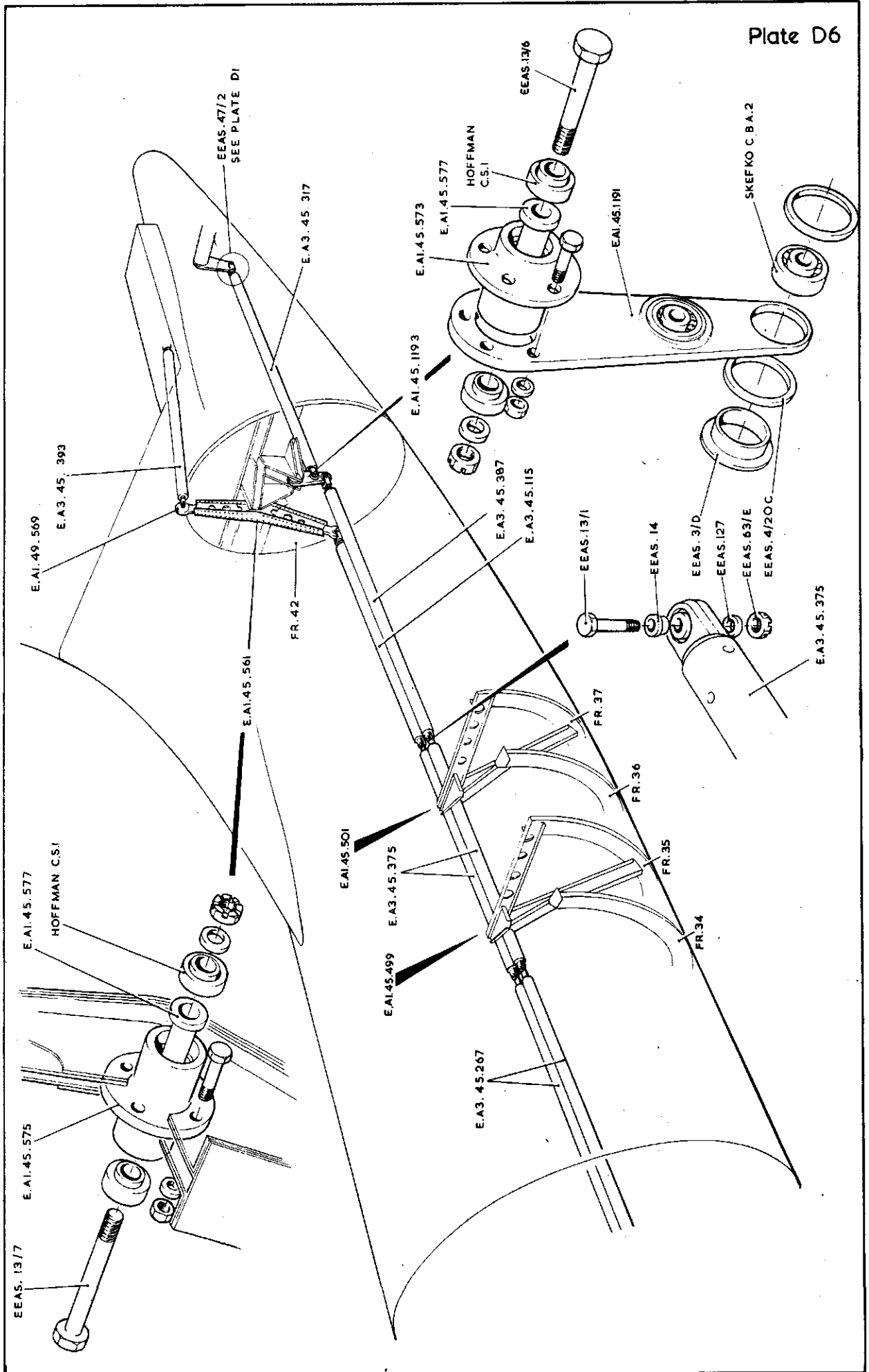
PILOTS RUDDER PEDALS



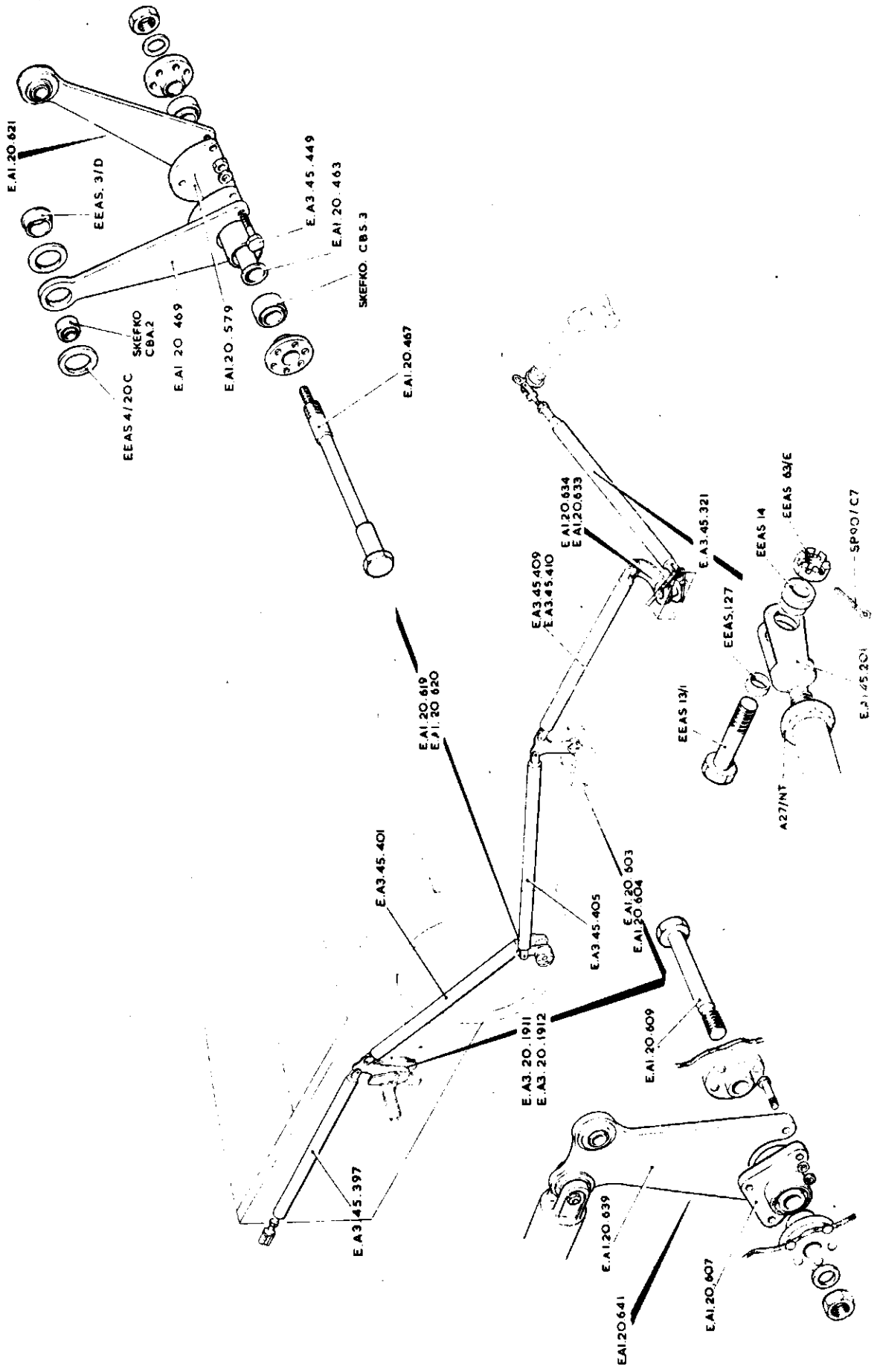
LEVERS, CONTROL, FLYING AT PRESSURE BULKHEAD



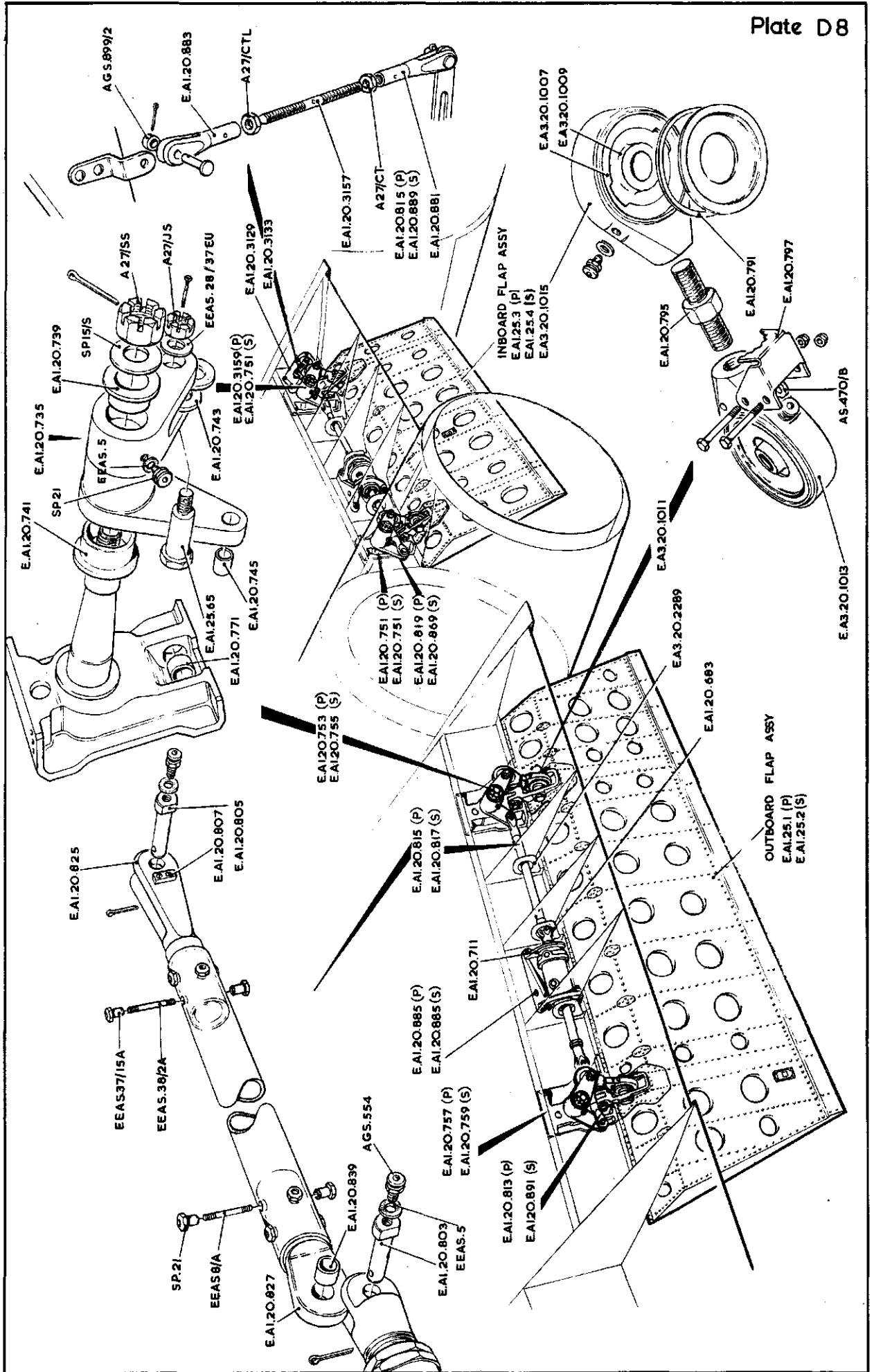
CONTROLS FLYING, CENTRE FUSELAGE



FLYING CONTROLS IN REAR FUSELAGE



AILERON CONTROLS IN WING



FLAP OPERATING MECHANISM

This file was downloaded
from the RTFM Library.
Link: www.scottbouch.com/rtfm

Please see site for usage terms,
and more aircraft documents.

