

INDEX OF ASSEMBLIES

Assembly	Drawing No.	Page No.
GENERAL ASSEMBLY OF AIRCRAFT	EG7.00.1	B1
BOMB BAY PACK		
Bomb Bay Pack Installation	EG7.11.15	C1
CONTROLS		
Aileron Controls in Port Wing	EA1.45.13	D1
Aileron Controls in Starboard Wing	EA1.45.14	DA1
Engine Controls in Front Fuselage	EG7.47.41	DB1
Engine Controls in Port Wing	EA3.47.21	DC1
Engine Controls in Starboard Wing	EA3.47.22	DD1
Engine Controls in Centre Fuselage	EA1.47.125	DE1
Flap Operating Mechanism, Port	EA1.20.701	DF1
Flap Operating Mechanism, Starboard	AE1.20.700	DG1
Flying Controls in Cockpit	EG7.45.3	DH1
Flying Controls in Centre Fuselage	EA3.45.379	DJ1
Flying Controls in Rear Fuselage	EA3.45.385	DK1
ELECTRICAL		
Electrical Equipment in Front Fuselage	EG7.81.5	E1
Electrical Equipment in Centre Fuselage	EG7.81.1607	EA1
Electrical Equipment in Rear Fuselage	EG7.81.37	EB1
Electrical Equipment in Port Wing	EG7.81.1609	EC1
Electrical Equipment in Starboard Wing	EG7.81.1610	ED1
Electrical Equipment in Wing Tip, Port	EA1.81.19	EE1
Electrical Equipment in Wing Tip, Starboard	EA1.81.20	EF1
Electrical Equipment O/B of Rib 8, Port Wing	EG7.81.93	EG1
Electrical Equipment O/B of Rib 8, Starboard Wing	EG7.81.94	EH1

INDEX OF ASSEMBLIES

Assembly	Drawing No.	Page No.
EQUIPMENT, AIRCRAFT		
Cabin, Pressure Equipment in Front Fuselage	EG7.80.7	F1
Equipment in Rear Fuselage	EA3.83.115	FA
EQUIPMENT, ANCILLARY		
Ground Equipment	EG7.88.1	G1
FUSELAGE		
Front Fuselage	EG7.00.41	H1
Front Fuselage Structure	EG7.10.1	HA1
Centre Fuselage	EG7.00.43	HB1
Centre Fuselage Structure	EG7.11.1	HC1
Rear Fuselage and Tail Unit	EG7.00.45	HD1
MAIN PLANE		
Aileron, Port	EA3.24.1	J1
Aileron, Starboard	EA3.24.2	JA1
Flap, Outer Wing, Port	EA1.25.1	JB1
Flap, Outer Wing, Starboard	EA1.25.2	JC1
Flap, inner Wing Port	EA1.25.3	JD1
Flap, Inner Wing, Starboard	EA1.25.4	JE1
Undercarriage Door C/W Mechanism, Port	EA1.20.10733	JF1
Undercarriage Door C/W Mechanism, Starboard	EA1.20.10734	JG1
Wing, Port	EG7.00.11	JH1
Wing, Starboard	EG7.00.12	JJ1
Wing Structure, Port	EA3.20.1	JK1
Wing Structure, Starboard	EA3.20.2	JL1
Wing Tip, Port	EA3.00.5083	JM1
Wing Tip, Starboard	EA1.00.68	JN1

INDEX OF ASSEMBLIES

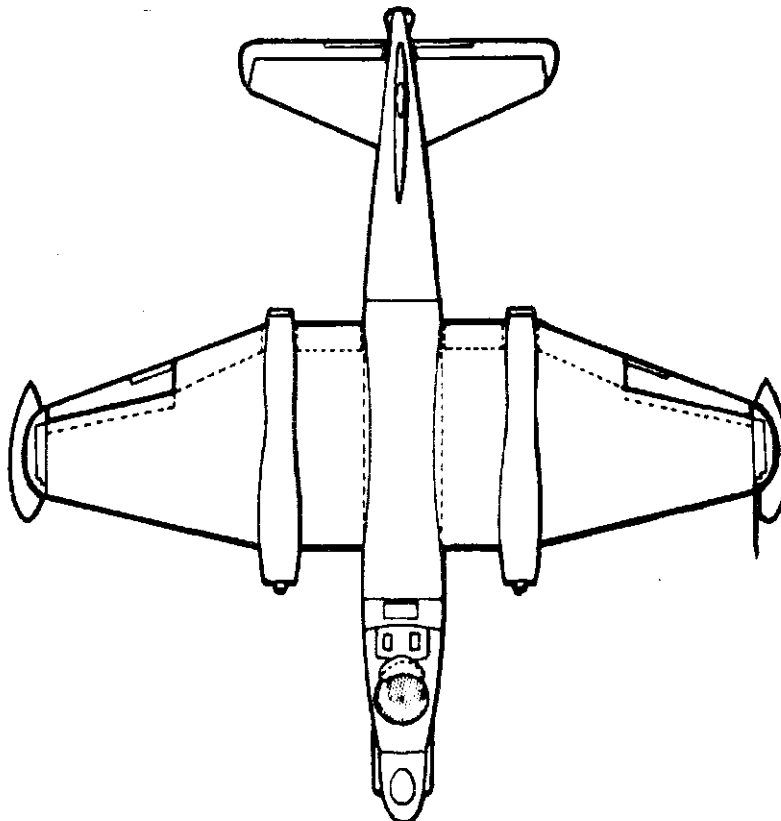
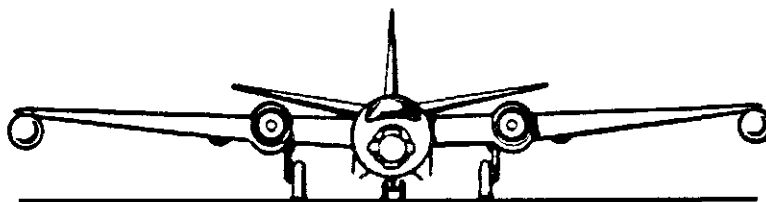
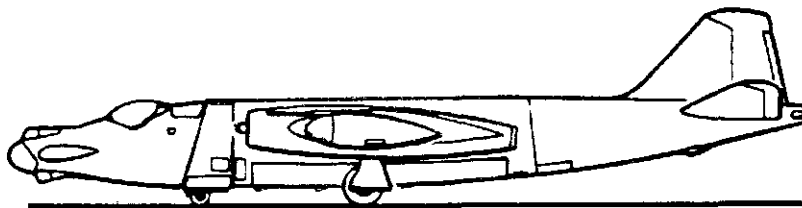
Assembly	Drawing No.	Page No.
MISCELLANEOUS ATTACHMENTS	—	K1
POWER INSTALLATION		
Engine, MK. 102, Installation, Port	E.G7.00.15	L1
Engine, MK.102, Installation, Starboard	E.G7.00.16	LA1
Engine Cowling, Port	E.A1.50.395	LB1
Engine Cowling, Starboard	E.A1.50.396	LC1
Engine Mountings and Attachments, Port	E.A1.51.1	LD1
Engine Mountings and Attachments, Starboard	E.A1.51.2	LE1
RADIO AND RADAR		
Electronic Equipment in Aircraft, Assembly	E.G7.82.11	M1
Electronic Equipment in Centre Fuselage	E.G7.82.711	MA1
Electronic Equipment in Front Fuselage	E.G7.82.1093	MB1
Electronic Equipment in Rear Fuselage	E.G7.82.1519	MC1
Green Satin, Assembly (A.R.I. 5851)	E.G7.82.151	MD1
H.F. Radio, Installation (A.R.I. 23090)	E.G7.82.181	ME1
I.F.F. Installation (A.R.I. 5848)	E.G7.82.201	MF1
Radio Altimeter, Assembly (A.R.I. 23061)	E.G7.82.353	MG1
Radio Compass, Assembly (A.R.I. 5877)	E.G7.82.241	MH1
Tacan, Installation (A.R.I. 18107/4)	E.G7.82.127	MJ1
U.A.60 (Intercomm.) Assembly (A.R.I. 23099/7)	E.G7.82.357	MK1
U.H.F. Installation (A.R.I. 18124/1)	E.G7.82.103	ML1
V.H.F. in Aircraft, Assembly (A.R.I. 23117/2)	E.G7.82.351	MM1
V.O.R./I.L.S. Installation (A.R.I. 23118)	E.G7.82.355	MN1

INDEX OF ASSEMBLIES

Assembly	Drawing No.	Page No.
SERVICES		
Air Connections to Engine, Port	E.G7.50.21	N1
Air Connections to Engine, Starboard	E.G7.50.23	NA1
Air Turbine Pipes, Port	E.G7.75.9	NB1
Air Turbine Pipes, Starboard	E.G7.75.11	NC1
Air Ventilated Suit System in Centre Fuselage	E.G7.75.229	ND1
Air Ventilated Suit System in Front Fuselage	E.G7.75.333	NE1
Cabin Pressure System in Front Fuselage	E.G7.75.3	NF1
Cabin Pressure System in Centre Fuselage	E.G7.75.5	NG1
Cabin Pressure and Cold Air System in Wing, Port	E.A3.04.9547	NH1
Cabin Pressure and Cold Air System in Wing, Starboard	E.A3.04.10941	NJ1
Cold Air Supply to Pilot	E.G7.74.1	NK1
De-Misting System, in Front Fuselage	E.G7.76.1	NL1
Equipment, Inner Wing Leading Edge, Port	E.A3.00.67	NM1
Equipment, Inner Wing Leading Edge, Starboard	E.A3.00.68	NN1
Fire Protection System in Wing, Port	E.G7.60.15	NP1
Fire Protection System in Wing, Starboard	E.G7.60.16	NQ1
Fire Protection System in Centre Fuselage	E.G7.60.1	NR1
Fuel System in Centre Fuselage	E.G7.57.5	NS1
Fuel System in Rear Fuselage	E.B7.57.293	NT1
Fuel System in Port Wing	E.A1.57.727	NU1
Fuel System in Starboard Wing	E.A1.57.728	NV1
Fuel and Air Pipes in Wing Tip, Port	E.A1.57.257	NW1
Fuel and Air Pipes in Wing Tip, Starboard	E.A1.57.258	NX1
Fuel Delivery System in Inner Wing, Port	E.B6.57.71	NY1
Fuel Delivery System in Inner Wing, Starboard	E.A1.57.256	NZ1
Hydraulic Equipment in Centre Fuselage	E.G7.73.5	NAA1
Hydraulic Equipment in Front Fuselage	E.G7.73.37	NAB1
Hydraulic Equipment in Port Wing	E.A3.73.539	NAC1

INDEX OF ASSEMBLIES

Assembly	Drawing No.	Page No.
SERVICES (continued)		
Hydraulic Equipment in Starboard Wing... ..	E.A3.73.540	NAD1
Hydraulic Equipment in Inner Wing Leading Edge, Port ...	E.A3.04.10907	NAE1
Hydraulic Equipment in Inner Wing Leading Edge, Starboard	E.A3.04.10911	NAF1
Nitrogen Pressurising of Waveguides and Co-axial Cables in Front Fuselage	E.G7.79.43	NAG1
Nitrogen Pressurising Waveguides in Bomb Bay	E.G7.79.9	NAH1
Oxygen System	E.G7.71.1	NAJ1
Pitot and Static Pipes in Front Fuselage	E.G7.80.1785	NAK1
Pitot and Static Pipes in Port Wing	E.G7.80.1757	NAL1
Turbo-Alternator, Port Wing	E.G7.61.1	NAM1
Turbo-Alternator, Starboard Wing	E.G7.61.3	NAN1
Turbo-Alternator Control Units Cooling, Port Wing	E.G7.75.607	NAP1
Turbo-Alternator Control Units Cooling, Starboard Wing ...	E.G7.75.609	NAQ1
TAIL UNIT		
Rudder C/W Tab.	E.A3.33.1	P1
Tailplane and Elevators	E.A1.00.19	PA1
TANKS		
Jettison Wing Fuel Tank, Port	E.B6.00.347	Q1
Jettison Wing Fuel Tank, Starboard	E.B6.00.348	QA1
Window Dispensing Container, Port	E.G7.84.1	QB1
Window Dispensing Container, Starboard	E.G7.84.2	QC1
UNDERCARRIAGE		
Main Undercarriage, Port	E.A1.40.1	R1
Main Undercarriage, Starboard	E.A1.40.2	RA1
Nose Undercarriage	E.A9.40.1	RB1



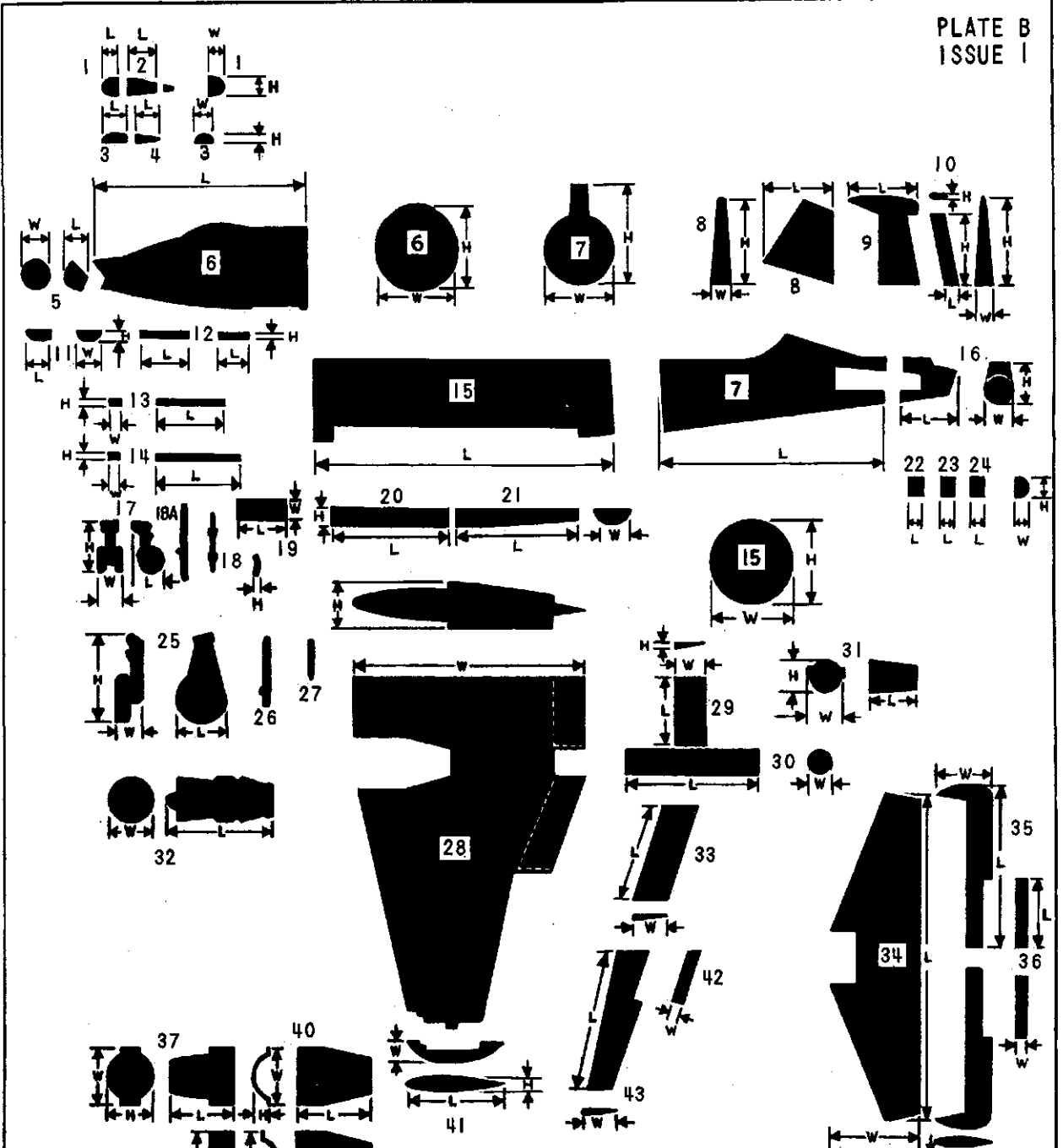
GENERAL ARRANGEMENT

(DATA IS FOR STORAGE AND PACKING ONLY)

DUTY:- TRAINING

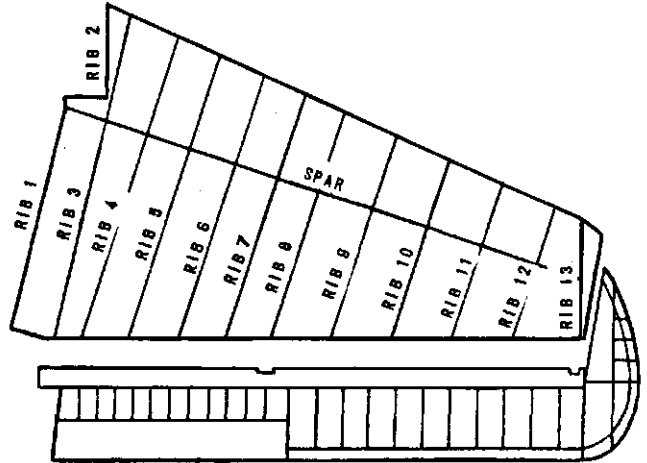
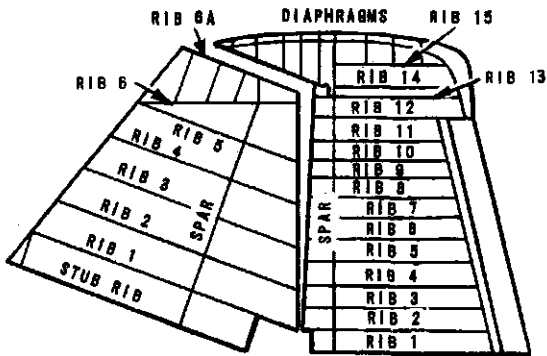
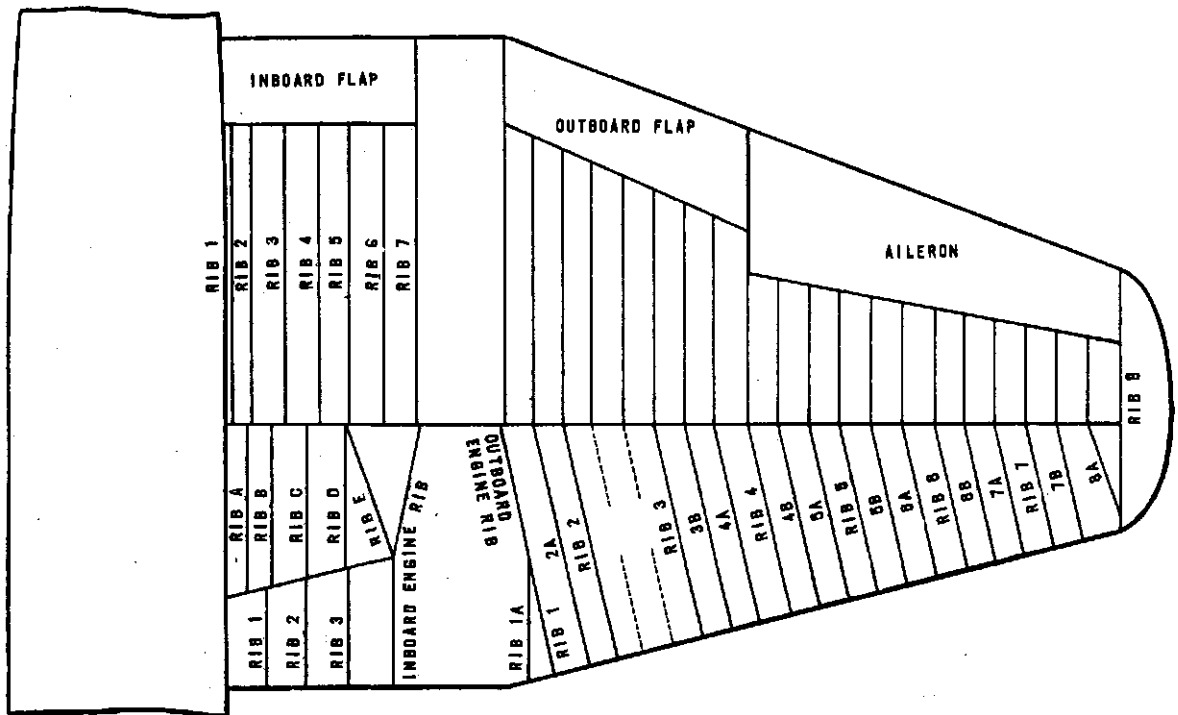
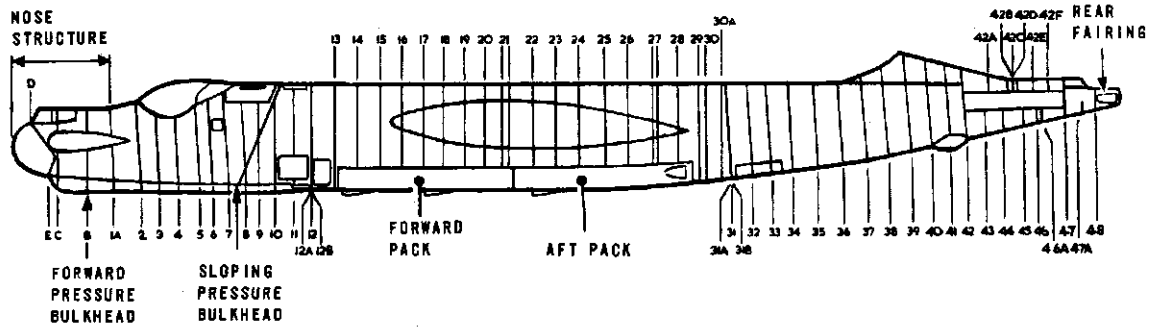
TYPE:- TWIN ENGINED, JET PROPELLED
MID-WING MONOPLANE

		DIMENSIONS				AREAS	
WING SPAN		FT	IN	MAIN PLANE		MAIN PLANES	
(without wing-tip tanks)		64	0	INCIDENCE	- 2 DEG	(with ailerons)	- 960 FT ²
OVERALL HEIGHT	Tail up	15	7	DIHEDRAL		AILERONS (2) TOTAL	- 72 FT ²
	Tail down			TOP SURFACE		TAIL PLANE	
				OF MAIN PLANE	- 2 DEG - 10 MIN	(with elevator)	- 191 FT ²
OVERALL LENGTH		67	4	SWEEPBACK		ELEVATORS	- 57 FT ²
				(At leading edge)	- 13 DEG 33 MIN	FIN	- 66 FT ²
CHORD	At root	19	0	SWEEP FORWARD		RUDDER	- 31 FT ²
	At Tip	7	8	(At trailing edge)	- 19 DEG 53 MIN		
FUEL TANK CAPACITY:-NO.1 TANK.		520 GAL		NO.2 TANK, 317 GAL		NO.3 TANK. 540 GAL	
				WING TIP TANKS (2), 488 GAL			



**COMPONENT WEIGHTS
& DIMENSIONS**

NO.	COMPONENT	LENGTH	WIDTH	HEIGHT	TARE WT. (LBS)	EQPD. WT. (LBS)	NO.	COMPONENT	LENGTH	WIDTH	HEIGHT	TARE WT. (LBS)	EQPD. WT. (LBS)
1	PORT & STBD FAIRINGS	1' 2.5"	0' 10.5"	1' 2.6"	2.722		23	PORT & STBD CENTRE SKIN ASSEMBLIES	0' 5.1"	0' 7.2"	0' 7.1"	0.305	
2	PORT & STBD FAIRING ASSY	1' 9.6"	0' 10.3"	1' 2.6"	4.983		24	PORT & STBD FAIRING	0' 6.3"	0' 6.5"	0' 7.1"	1.303	
3	UPPER FAIRING	1' 3.5"	2' 3.7"	0' 8.6"	3.319		25	MAIN U/C WHEEL & LEG	3' 11"	2' 1"	6' 3"	691	
4	FAIRING ASSEMBLY	1' 5.6"	2' 3.7"	0' 8.6"	2.729		26	MAIN U/C SIDE STAY	2' 9"	0"	0"	36	
5	NOSE FAIRING	1' 3.5"	3' 11.4"		21.364		27	MAIN U/C JACK	1' 11"		7'	14	16
6	FRONT FUSELAGE	17' 1.2"	6' 6"	6' 6"	1100	3350	28	MAIN PLANE	29' 0"	19' 0"	4' 3"	2073	2980
7	REAR FUSELAGE	19' 1"	5' 10"	7' 11"	520	626	29	FLAP INBOARD	5' 7"	2' 6"	3'	22	
8	FIX	6' 8"	1' 6"	6' 9"	94		30	JET PIPE	12' 3"	2' 2"	2'	184	
9	RUDDER	7' 1"	1' 3'	7' 0"	141		31	JET PIPE COWLING	3' 8"	2' 2"	6"	21	
10	RUDDER TAB	9"	2'	5' 5"	7		32	ENGINE	11' 0"	3' dia.	6"	2460	
11	LOWER FAIRING	1' 5.4"	2' 3.1"	1' 0.1"	4.088		33	FLAP, OUTBOARD	8' 11"	2' 0"	3'	31	
12	FAIRING	1' 0.4"	2' 1.5"	0' 8.1"	1.654		34	TAIL PLANE	26' 0"	7' 9"	1' 6"	493	
13	STARBOARD DUCT	11' 6"	0' 6.5"	0' 3.5"	10.6		35	ELEVATOR	15' 11"	4' 5"	5'	109 (PORT) 108 (STBD)	
14	PORT DUCT	13' 6"	0' 6.5"	0' 3.5"	13.9		36	ELEVATOR TAB	5' 7"	8"	2"	17	
15	CENTRE FUSELAGE	25' 11"	7' 7'	6' 6"	2370	3547	37	ENGINE FRONT COWLING	4' 9"	3' 10"	3' 10"	11	
16	REAR CONE	4' 10"	2' 3'	2' 9"	38.466		38	ENGINE SERVICE PANEL	2' 2"	2' 0"	1' 9"	11	
17	NOSE U/C WHEEL & LEG	2' 2"	1' 3'	3' 7"	228		39	ENGINE BOTTOM REAR COWLING	5' 5"	2' 0"	1' 3"	30	
18	NOSE U/C JACK	2' 2"	5'	6'	3	4	40	ENGINE TOP REAR COWLING	5' 5"	2' 0"	1' 3"	22	
18A	NOSE U/C RADIUS ROD	3' 11"	4"	8"	29		41	WING TIP	1' 8"	7' 8"	10"	16	
19	NOSE U/C DOORS	4' 2"	1' 5'	3'	12		42	AILERON TAB	4' 2"	8"	2"	3	
20	FORWARD BAY	11' 0"	5' 2.4"	1' 4.8"	208.7		43	AILERON	12' 6"	1' 3'	9"	96	
21	AFT BAY	10' 10"	5' 2.4"	1' 4.8"	199.7								
22	PORT & STBD FAIRING FWD. SKIN ASSEMBLIES	0' 5.6"	0'	0' 7.1"	0.218								



This file was downloaded
from the RTFM Library.

Link: www.scottbouch.com/rtfm

Please see site for usage terms,
and more aircraft documents.

