

POWER INSTALLATION
RA3 ENGINE INSTALLATION
PORT

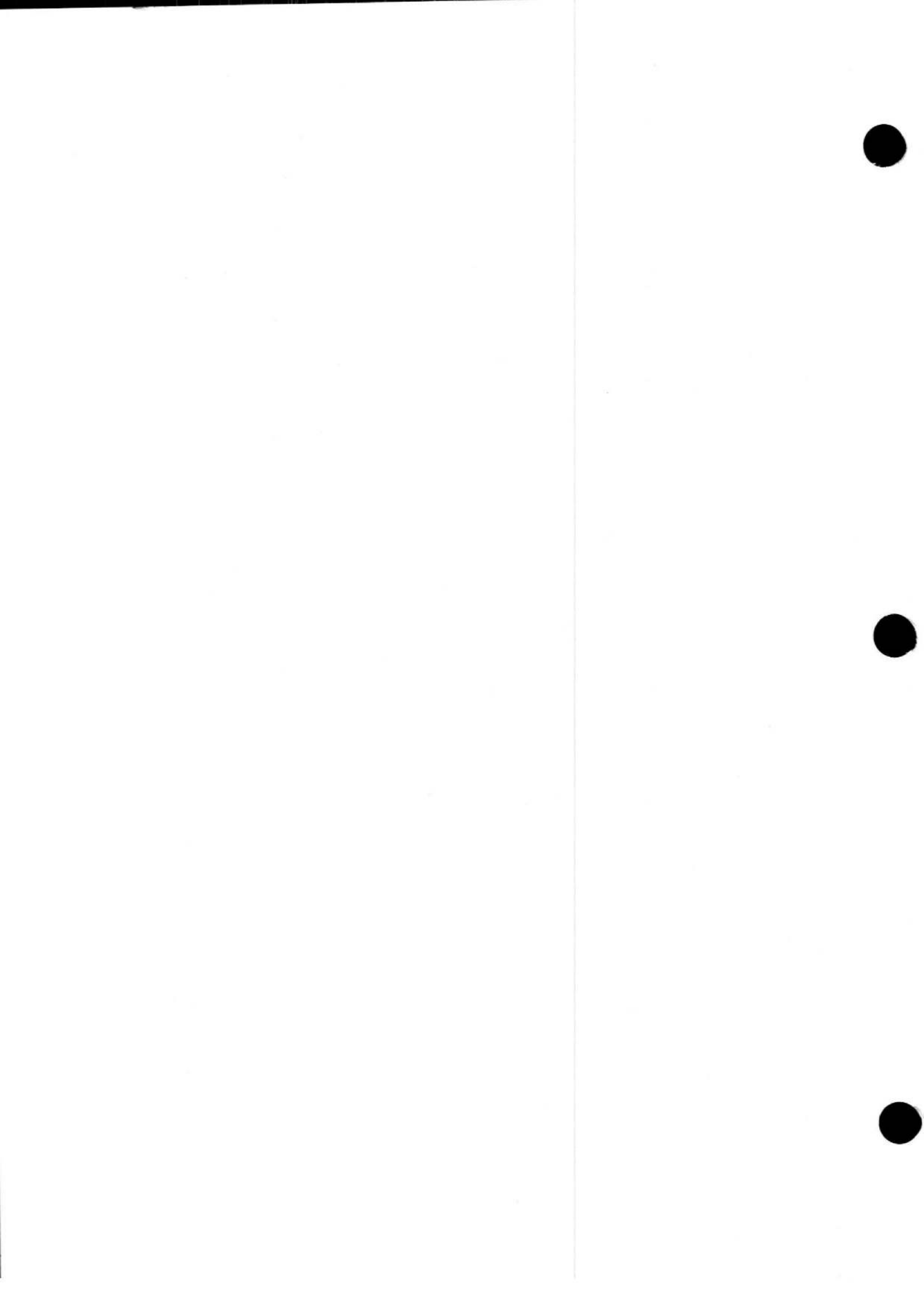
Part Number	Description	No. Off	Matl. Spec.	Plate No.
-	ENGINE, RA3, PORT, INSTALLATION (EA1.00.103) Spares for:-	-	-	1/1
EA1.50.959	. DUCT, air, compressor bleed valve	2	-	1/2
BA23817	. FAIRING, engine starter	1	-	1/3
-	. FIRE PROTECTION SWITCH IN ENGINE BAY, ASSEMBLY (EA1.60.5) Spares for:-	-	-	1/4
GRAVINER 150D/01/300(2)	. . UNIT, fire detection switch resetting	7	-	1/5
A25/11C	. . Bolt, 2BA, hex. head	2	-	1/6
A25/21C	. . Bolt, 2BA, hex. head	1	-	1/7
AGS2001/C/1	. . Nut, stiff, 2BA	2	-	1/8
EA1.60.43	. . Tube, distance	1	T4	1/9
SP15/C	. . Washer, 2BA, plain	2	-	1/10
KGA0463	. GENERATOR, tachometer, engine speed	1	-	1/11
EA1.57.15	. PIPE, flexible, fuel feed to engine (Dunlop Part No. AHM541/21.0)	1	WH2/1	1/12
EA3.57.33	. PIPE, assembly from compressor coupling to hose coupling	1	T26	1/13
EA1.60.57	. PIPE, flexible, fire protection system (Dunlop Part No. AHO24508/10-75)	1	WH2/1	1/14
EA2.57.785	. PIPE, flexible, drop tank air supply (Pre-Mod 5448)	1	Avica Ltd	1/15
EA2.57.825	. PIPE, flexible (Mod 5448)	1	-	
-	. PIPE, FUEL DRAIN, ASSEMBLY (EA1.50.1667) (Pre-Mod 4726) Spares for:-	-	-	1/16
EA1.50.1665	. . PIPE, fuel drain	1	L56	1/17
-	. PIPE, FUEL DRAIN, ASSEMBLY (EA3.50.37) (Mod 4726) Spares for:-	-	-	1/25
EA3.50.35	. . PIPE, fuel drain, assembly	1	-	1/26
EA4.61.103	. PIPE, assembly, air cooling, generator gear box	1	T26	1/18
EA1.50.973	. RING, air duct retaining	4	DTD213	1/19
TYPE	. STARTER, engine	1	-	1/20
BS720 Mk. 5 305V9700 ISSUE A	. SWITCH, differential, full pressure warning light	1	-	1/21
EA3.81.1105	. THERMO-COUPLE, ASSEMBLY Spares for:-	4	-	1/22
H16/37	. . THERMO-COUPLE, Type 'B8'	1	-	1/23
SLP80WE	. . TUBE	1	-	1/24

POWER INSTALLATION
RA3 ENGINE INSTALLATION
PORT

Part Number	Description 1 2 3 4 5 6	No. Off	Matl. Spec.	Plate No.

POWER INSTALLATION
RA3 ENGINE INSTALLATION
STARBOARD

Part Number	Description	No. Off	Matl. Spec.	Plate No.	
					1
-	ENGINE RA3 STARBOARD INSTALLATION (EA1.00.104) Spares for:-	-	-	2/1	
EA1.50.959	. DUCT, air compressor bleed valve	2	-	2/2	
BA23817	. FAIRING, engine starter	1	-	2/3	
-	. FIRE PROTECTION SYSTEM IN ENGINE BAY ASSEMBLY (EA1.60.6) Spares for:-	-	-	2/4	
EA1.60.51	. BRACKET, switch unit assembly Attaching parts for EA1.60.51:-	1	-	2/5	
A25/1C	. Bolt, 2 BA hex head	2	-	2/6	
A25/10C	. Bolt, 2 BA hex head	2	-	2/7	
AGS2001C1	. Nut, stiff 2 BA	4	-	2/8	
EA1.60.43	. Tube distance	2	T.4	2/9	
SP15C	. Washer 2 BA	4	-	2/10	
GRAVINER 150D01/300(2)	. UNIT, fire detection switch, resetting Attaching parts for 150D01/300(2):-	8	-	2/11	
A25/11C	. Bolt, 2 BA hex head	2	-	2/12	
AGS2001C1	. Nut, stiff, 2 BA	2	-	2/13	
SP15C	. Washer, 2 BA plain	2	-	2/14	
R KGA0463	. GENERATOR, tachometer engine speed	1	-	2/15	
EA1.57.16	. PIPE, flexible fuel feed to engine (Dunlop Part No. AHM542/21.0)	1	WH2/1	2/16	
EA1.60.58	. PIPE, flexible protection system (Dunlop Part No. 24509/10.75)	1	WH2/1	2/17	
R EB6.57.83	. PIPE, flexible drop tank air supply (Pre-Mod 5448)	1	-	2/18	
R EB6.57.351	. PIPE, flexible (Mod 5448)	1	-		
R EB7.61.85	. PIPE, flexible air cooling generator gear box (Pre-Mod 3797)	1	-	2/19	
R EB7.61.135	. PIPE, flexible (Mod 3797)	1	-		
-	. PIPE FUEL DRAIN ASSEMBLY (EA1.50.1667) (Pre-Mod 4726) Spares for:-	-	-	2/20	
EA1.50.1665	. PIPE, fuel drain	1	L.56	2/21	
-	. PIPE FUEL DRAIN ASSEMBLY (EA3.50.37) (Mod 4726) Spares for:-	-	-	1/28	
EA3.50.35	. PIPE, fuel drain assembly	1	-	1/29	
EA1.50.973	. RING, air duct retaining	4	DTD213	2/22	
TYPE SBS720 MK5	. STARTER, engine	1	-	2/23	
R 305V9700	. SWITCH, differential fuel pressure warning light	1	-	2/24	
EA3.81.1105	. THERMO-COUPLE ASSEMBLY Spares for:-	4	-	2/25	
R B8	. THERMO-COUPLE Type 'B'	1	-	2/26	
R 26FZ/3613 or HELLERMANN SLP80	. TUBE, silicone rubber 5/16" i/d x 1/16" wall x 16" long	1	SH75/80	2/27	
	. TUBE, 16" long	1	-		



POWER INSTALLATION
RA3 ENGINE INSTALLATION
STARBOARD

Part Number	Description	No. Off	Matl. Spec.	Plate No.
—	ENGINE RA3 STARBOARD INSTALLATION (EA1.00.104) Spares for:-	—	—	2/1
EA1.50.959	. DUCT, air compressor bleed valve	2	—	2/2
BA23817	. FAIRING, engine starter	1	—	2/3
—	. FIRE PROTECTION SYSTEM IN ENGINE BAY ASSEMBLY (EA1.60.6) Spares for:-	—	—	2/4
EA1.60.51	. BRACKET, switch unit assembly Attaching parts for EA1.60.51:-	1	—	2/5
A25/1C	. Bolt, 2 BA hex head	2	—	2/6
A25/10C	. Bolt, 2 BA hex head	2	—	2/7
AGS2001C1	. Nut, stiff 2 BA	4	—	2/8
EA1.60.43	. Tube distance	2	T.4	2/9
SP15C	. Washer, 2 BA	4	—	2/10
GRAVINER 150D01/300(2)	. UNIT, fire detection switch, resetting Attaching parts for 150D01/300(2):-	8	—	2/11
A25/11C	. Bolt, 2 BA hex head	2	—	2/12
AGS2001C1	. Nut, stiff, 2 BA	2	—	2/13
SP15C	. Washer, 2 BA plain	2	—	2/14
KGA0463	. GENERATOR, tachometer engine speed	1	—	2/15
EA1.57.16	. PIPE, flexible fuel feed to engine (Dunlop Part No. AHM542/21.0)	1	WH2/1	2/16
EA1.60.58	. PIPE, flexible protection system (Dunlop Part No. 24509/10.75)	1	WH2/1	2/17
EB6.57.83	. PIPE, flexible drop tank air supply (Pre-Mod 5448)	1	—	2/18
EB6.57.351	. PIPE, flexible (Mod 5448)	1	—	2/19
EB7.61.85	. PIPE, flexible air cooling generator gear box (Pre-Mod 3797)	1	—	2/19
EB7.61.135	. PIPE, flexible (Mod 3797)	1	—	2/19
—	. PIPE FUEL DRAIN ASSEMBLY (EA1.50.1667) (Pre-Mod 4726) Spares for:-	—	—	2/20
EA1.50.1665	. PIPE, fuel drain	1	L.56	2/21
—	. PIPE FUEL DRAIN ASSEMBLY (EA3.50.37) (Mod 4726) Spares for:-	—	—	1/28
EA3.50.35	. PIPE, fuel drain assembly	1	—	1/29
EA1.50.973	. RING, air duct retaining	4	DTD213	2/22
TYPE SBS720 MK5 305V9700	. STARTER, engine	1	—	2/23
	. SWITCH, differential fuel pressure warning light	1	—	2/24
EA3.81.1105	. THERMO-COUPLE ASSEMBLY Spares for:-	4	—	2/25
B8	. THERMO-COUPLE Type 'B'	1	—	2/26
R SLP80WE	. TUBE	1	—	2/27



A.P.101B-0418-3A

POWER INSTALLATION
COWLING, ENGINE, PORT

Page LB1

Ref. No.	Part No.	Description	No. off	Matl. Spec.	Cl. of Equip. M.R. L.M.	Fig. and Index
	—	COWLING, ENGINE, PORT, ASSEMBLY (E.A1.50.395)	—	—	—	3/1
		Spares for:—				
626	E.A1.50.103	CLIP, toggle, hook spring	2	L.72	C	3/2
627	E.A1.50.105	CLIP, toggle, hook spring	2	L.72	C	3/3
		Attaching parts for E.A1.50.103 and E.A1.50.105:—				
28D/1007979	AS.1246/1B	Bolt, 4 BA round head	1	—	C	3/4
28M/1278189	AGS.2001/B/1	Nut, stiff, 4 BA	1	—	C	3/5
28W/9419465	SP.13/B	Washer, 4 BA plain	1	—	C	3/6
3004	E.A3.00.121	COWL, FRONT, GROUP (Supplied with trim allowance)	1	—	B	4/1
2973	E.A1.50.249	COWL, FRONT, GROUP (Supplied to Part No. E.A3.00.123 with trim allowance and pilot holes)	1	—	B	4/2
		Spares for:—				
18193	E.A1.50.843	AIR, INTAKE, ASSEMBLY	1	—	B/MR	4/3
		Spares for:—				
10699	E.A1.50.1055	COVER, plate, debris guard attachment plate	2	L.72	C	4/4
	—	FRAME, FLANGED, RING, ASSEMBLY (E.A1.50.1833)	—	—	—	4/5
		Spares for:—				
33250	EEAS.75	SEAL	1	K099F Linatex	C	4/6
3089	E.A1.50.1673	PLATE, louvre	2	DTD.166B	C	4/7
10702	E.A1.50.1597	SCREEN, perforated, 18 SWG	38	Comm. Alum.	C	4/8
26503	E.A1.50.1823	SLEEVE, exhaust outlet	1	—	C	4/9
6615	E.A3.00.239	BAFFLE, bleed valve air duct (Supplied undrilled with trim allowance)	1	—	C	4/11
5208	E.A1.50.1753	DUCT, air compression, bleed valve	1	—	C	4/12
		Attaching parts for E.A1.50.1753:—				
1026	EEAS.1/1.1/2C	Screw, 2 BA 120° c'sk head	14	S.96	C	4/13
4784	E.A1.50.1761	PANEL, access, for adjustment of accelerator and bleed valve control	3	—	C	4/14
4786	E.A1.50.1779	PANEL, access, for bleed valve adjustment	1	—	C	4/15
		Attaching parts for E.A1.50.1779:—				
1025	EEAS.1/1C	Screw, 2 BA 120° c'sk head	8	S.96	C	4/16
22530	E.A1.50.1805	PANEL, access, P.V. ram	1	L.72	B	4/17
		Attaching parts for E.A1.50.1805:—				
28D/1007975	AS.1242/1C	Bolt, 2 BA c'sk head	8	—	C	4/18
22531	E.A1.50.1807	PANEL, access, P.V. ram	1	L.72	B	4/19
		Attaching parts for E.A1.50.1807:—				
28D/1007975	AS.1242/1C	Bolt, 2 BA c'sk head	8	—	C	4/20
		Attaching parts for E.A1.50.249:—				
1129	E.A1.50.1051	Screw, special	41	S.11	C	3/7

POWER INSTALLATION
COWLING, ENGINE, PORT

Ref. No.	Part No.	Description	No. off	Matl. Spec.	Cl. of Equip. M.R. L.M.	Fig. and Index										
							1	2	3	4	5	6	7			
30953	E.A3.50.23	COWL BOTTOM, REAR (LESS U/C COWL DOOR), GROUP (For aircraft WD951 and onwards) (Supplied drilled to Drg. No. E.A3.00.263 with trim allowance) Spares for:—	1	—	B	5/1										
4178	E.A1.50.65	BRACKET, forward, hinge, u/c cowl door Attaching parts for E.A1.50.65:—	1	L.40	C/MR	5/2										
28D/1011023	A25/20C	Bolt, 2 BA hex. head	4	—	C	5/3										
28M/1006473	A27/CT	Nut, 2 BA thin	4	—	C	5/4										
28W/9419475	SP.15/C	Washer, 2 BA plain	4	—	C	5/5										
4171	E.A1.50.67	BRACKET, aft hinge, u/c cowl door Attaching parts for E.A1.50.67:—	1	L.40	C/MR	5/6										
28D/1011023	A25/20C	Bolt, 2 BA hex. head	2	—	C	5/7										
28D/1011024	A25/21C	Bolt, 2 BA hex. head	2	—	C	5/8										
28M/1006473	A27/CT	Nut, 2 BA thin	4	—	C	5/9										
28W/9419475	SP.15/C	Washer, 2 BA plain	2	—	C	5/10										
28W/9419404	SP.16/C	Washer, 2 BA plain	2	—	C	5/11										
—	—	COWL BOTTOM, REAR (E.A3.50.25) Spares for:—	—	—	—	5/12										
5182	E.A1.50.1601	PLATE, engine oil sump drainage pipe, retaining	1	—	C	5/13										
37413	E.A6.50.991	SPRING, funnel assembly, for air duct	1	—	C	5/14										
3036	E.A1.50.317	DOOR, access, in bottom rear cowl	1	—	C	5/15										
3038	E.A1.50.319	DOOR, undercarriage, cowl (Supplied with trim allowance) Attaching parts for E.A1.50.319:—	1	—	C	5/16										
28N/9153394	AGS.899/6	Collar, 5/16"	2	—	C	5/17										
28P/5525	SP.4Z/F10	Pin, shackle	1	—	C	5/18										
28P/12348	SP.4Z/F18	Pin, shackle	1	—	C	5/19										
28P/9527619	SP.90/C7	Pin, split	2	—	C	5/20										
639	E.A1.50.365	Washer	2	L.46	C	5/21										
28FP/4062396	FJ.5/60DS	FASTENER, dzus	4	—	C	5/22										
28FP/4062398	FJ.5/70DS	FASTENER, dzus	4	—	C	5/23										
28FP/4062400	FJ.5/80DS	FASTENER, dzus	2	—	C	5/24										
633	E.A1.50.281	FASTENER, TOGGLE, GROUP Spares for:—	2	—	C	5/25										
16312	E.A1.50.95	HANDLE, TOGGLE FASTENER, GROUP Spares for:—	1	—	C/MR	5/26										
28E/9153406	169/1	RING, split	1	—	C	5/27										
635	E.A1.50.49	SPRING, 19 SWG	1	Spring Steel	C	5/28										
16313	E.A1.50.155	Attaching parts for E.A1.50.95:—	2	S.11	C	5/29										
28P/9527619	SP.90/C7	Pin, stud, special Pin, split	2	—	C	5/30										

POWER INSTALLATION
COWLING, ENGINE, PORT

Ref. No.	Part No.	Description	No. off	Matl. Spec.	Cl. of Equip. M.R. L.M.	Fig. and Index
634	E.A1.50.282	FASTENER, TOGGLE, GROUP Spares for this group are identical with those for Part No. E.A1.50.281 on page LB2	2	—	C	5/31
636	E.A1.50.283	FASTENER, TOGGLE, group Spares for:—	1	—	C	5/32
7133	E.A1.50.97	HANDLE, TOGGLE, FASTENER, GROUP Spares for:—	1	—	C/MR	5/33
28E/9153406	169/1	RING, split	1	—	C	5/34
635	E.A1.50.49	SPRING, 19 SWG	1	Spring Steel	C	5/35
17661	E.A1.50.157	Attaching parts for E.A1.50.97:— Pin, stud, special	2	S.11	C	5/36
28P/1220716	SP.90/E4	Pin, split	2	—	C	5/37
637	E.A1.50.284	FASTENER, TOGGLE, GROUP Spares for this group are identical with those for Part No. E.A1.50.283	1	—	C	5/38
628	E.A1.50.161	PANEL, toggle fastener housing	6	—	C	5/39
R 5412	E.A1.50.1639	ROD, TENSION, AND CHECK CABLE ASSEMBLY (Pre-Mod. 5178)	1	—	B	5/40
R 6119344	E.A3.50.43	ROD, TENSION, AND CHECK CABLE ASSEMBLY (Mod. 5178) Spares for:—	1	—	B	
R 28D/9133012	A25/3C	BOLT, 2 BA	1	—	C	5/41
R 2624	E.A1.50.1641	CABLE, check assembly (Pre-Mod. 5178)	1	—	C	5/42
R 6119346	E.A3.50.39	CABLE, check assembly (Mod. 5178) Spares for:—	1	—	C	5/67
R 29H/1250126	C2	FERRULE, 'TALURIT' (Mod. 5178)	2	—	C	5/68
R	E.A1.50.1645	ROPE, steel wire (Pre-Mod. 5178)	A/R	—	C	5/69
R 28X/1017093	4PNC	ROPE, steel wire (Mod. 5178)	A/R	—	C	
R	E.A1.50.721	SPOOL (Pre-Mod. 5178)	2	—	C	
R	SP.67A	THIMBLE (MOD. 5178)	2	—	C	5/70
R 28K/4070323	SP.3/Y/413	FORK, joint	1	—	C	5/44
R 28K/4070324	SP.3/Y/413L	FORK, joint	1	—	C	5/43
R 28M/9403520	A27/CP	NUT, 2 BA plain (Pre-Mod. 5178)	1	—	C	5/47
R 28M/5808573	A27/CS	NUT, 2 BA plain (Mod. 5178)	1	—	C	
R 28M/5234	A14/CB	NUT, 2 BA (Pre-Mod. 5178)	1	—	C	5/45
R 28M/9403520	A27/CP	NUT, 2 BA (Mod. 5178)	1	—	C	
R 28M/5221	A14/CBL	NUT, 2 BA (Pre-Mod. 5178)	1	—	C	5/46
R 28M/13278	A27/CPL	NUT, 2 BA (Mod. 5178)	1	—	C	
R 28P/9486478	SP.90/C5	PIN, split	1	—	C	5/72
R 28U/4052	SP/8Y2	ROD, tension	1	—	C	5/48
R	E.A3.50.45	SPACER (Mod. 5178)	1	—	C	5/71
R 28W/9419402	SP.13/C	WASHER	1	—	C	5/49
28FP/341	S.5/325	SPRING, dzus	6	—	C	5/50
6503	E.A1.50.1793	WASHER, cup, engine cowling Dzus fastener retaining	10	DTD.124A	C	5/51
1026	EEAS.1/1.1/2C	Attaching parts for E.A3.50.23:— Screw, 2 BA 120° c'sk head	10	S.96	C	3/8
3042	E.A1.50.845	COWL, TOP, REAR, GROUP (For aircraft WD951 and onwards, supplied drilled and with trim allowance to Part No. E.A3.00.127) Spares for:—	1	—	B	5/52
628	E.A1.50.161	DOOR, toggle, fastener housing	8	—	C	5/53
15026	E.A1.50.315	DOOR, access, igniter plug	2	—	C	5/54

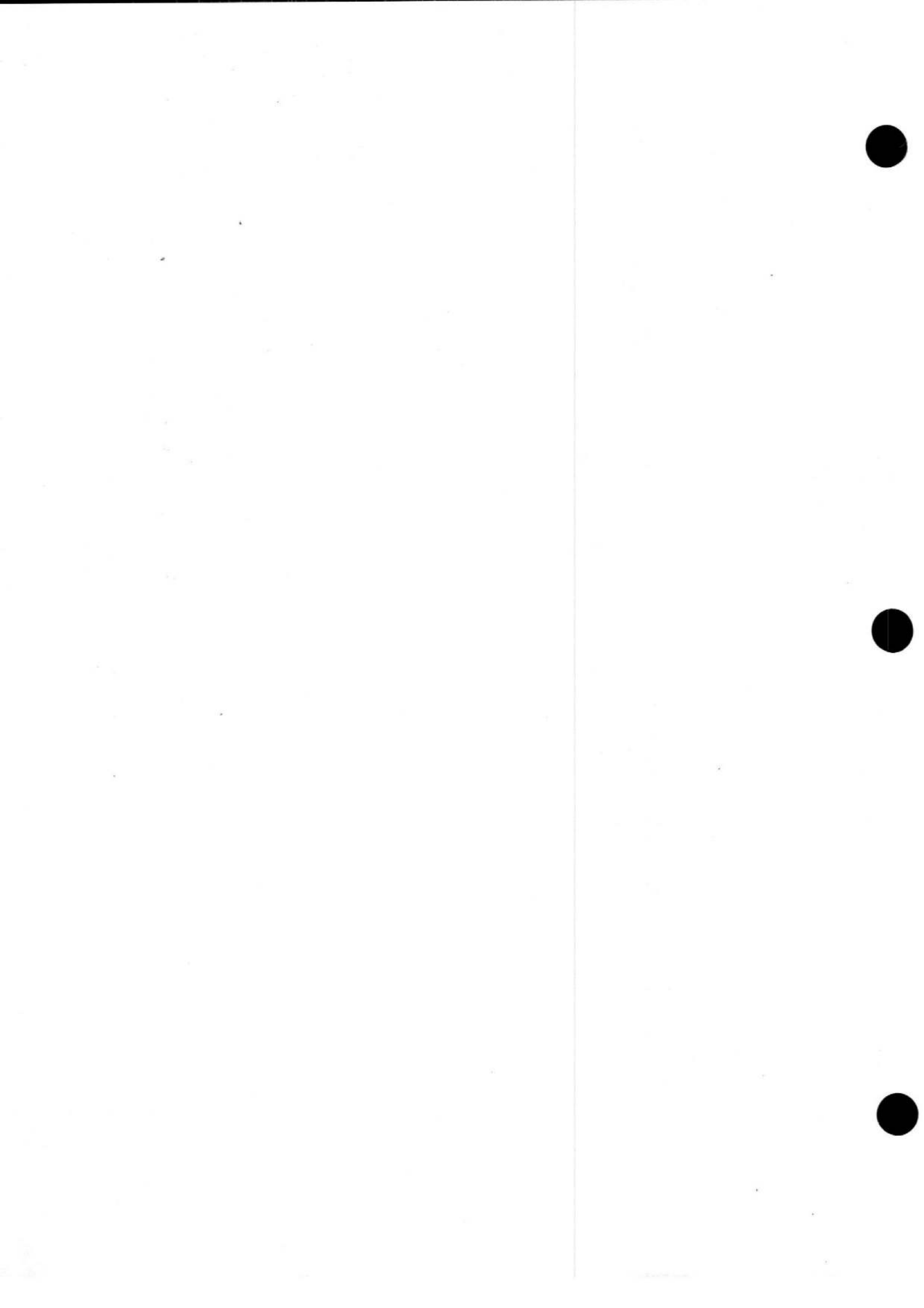
POWER INSTALLATION
COWLING, ENGINE, PORT

Ref. No.	Part No.	Description	No. off	Matl. Spec.	Cl. of Equip. M.R. L.M.	Fig. and Index
633	E.A1.50.281	FASTENER, TOGGLE, GROUP Spares for:—	2	—	C	5/25
16312	E.A1.50.95	HANDLE, TOGGLE, FASTENER, GROUP Spares for:—	1	—	C/MR	5/26
28E/9153406	169/1	RING, split	1	—	C	5/27
635	E.A1.50.49	SPRING, 19 SWG	1	Spring Steel	C	5/28
		Attaching parts for E.A1.50.95:—				
16313	E.A1.50.155	Pin, stud, special	2	S.11	C	5/29
28P/9527619	SP.90/C7	Pin, split	2	—	C	5/30
634	E.A1.50.282	FASTENER, TOGGLE, GROUP Spares for this group are identical with those for Part No. E.A1.50.281	2	—	C	5/31
636	E.A1.50.283	FASTENER, TOGGLE, GROUP Spares for:—	2	—	C	5/32
7133	E.A1.50.97	HANDLE, TOGGLE, FASTENER, GROUP Spares for:—	1	—	C/MR	5/33
28E/9153406	169/1	RING, split	1	—	C	5/34
635	E.A1.50.49	SPRING, 19 SWG	1	Spring Steel	C	5/35
		Attaching parts for E.A1.50.97:—				
17661	E.A1.50.157	Pin, stud, special	2	S.11	C	5/36
28P/1220716	SP.90/E4	Pin, split	2	—	C	5/37
637	E.A1.50.284	FASTENER, TOGGLE, GROUP Spares for this group are identical with those for Part No. E.A1.50.283	2	—	C	5/38
28FP/4062396	FJ.5/60DS	FASTENER, dzus	4	—	C	5/55
28FP/4062398	FJ.5/70DS	FASTENER, dzus	4	—	C	5/56
28FP/4062400	FJ.5/80DS	FASTENER, dzus	2	—	C	5/57
28FP/341	S.5/325	SPRING, dzus	8	—	C	5/58
6503	E.A1.50.1793	WASHER, cup, engine cowling Dzus fastener retaining	10	DTD.124A	C	5/59
640	E.A1.50.109	FORK-END, fitting, toggle fastener Attaching parts for E.A1.50.109:—	2	S.11	C	3/9
28P/864	SP.4Y/D6	Pin, shackle	1	—	C	3/10
642	E.A1.50.135	FORK-END, fitting, toggle fastener Attaching parts for E.A1.50.135:—	6	L.40	C	3/11
28P/864	SP.4Y/D6	Pin, shackle	1	—	C	3/12
643	E.A1.50.137	FORK-END, fitting, toggle fastener Attaching parts for E.A1.50.137:—	8	L.40	C	3/13
28P/9016037	SP.4Y/F10	Pin, shackle	1	—	C	3/14

POWER INSTALLATION

COWLING, ENGINE, PORT

Part Number	Description	No. Off	Matl. Spec.	Plate No.
EA1.50.391	. FORK-END, fitting, toggle fastener Attaching parts for EA1.50.391:—	1	L40	3/15
SP4Y/D10	. Pin, shackle	1	—	3/16
EA1.50.29	. HOOK, cowl, toggle fastener	8	S11	3/17
EA1.50.45	. HOOK, cowl, toggle fastener	10	S11	3/18
EA1.50.13	. PANEL, ENGINE SERVICE, GROUP Spares for:—	1	—	4/21
EA1.50.161	. . . DOOR, toggle, fastener housing	4	—	4/22
EA1.50.283	. . . FASTENER, TOGGLE, GROUP Spares for:—	2	—	4/23
EA1.50.97 HAND, TOGGLE, FASTENER, GROUP Spares for:—	1	—	4/24
169/1 RING, split	1	—	4/25
EA1.50.49 SPRING, 19 SWG	1	Spring Steel	4/26
EA1.50.157	Attaching parts for EA1.50.97:— . . . Pin, stud, special	2	S11	4/27
SP90/E4	. . . Pin, split	2	—	4/28
EA1.50.284	. . . FASTENER, TOGGLE, GROUP Spares for this group are identical with those for Part No. EA1.50.283	2	—	4/29
—	. . . PANEL, SERVICE, ASSEMBLY (EA1.50.291) Spares for:—	—	—	4/30
EA6.50.283 DUCT, ventilating	2	—	4/31
R EA1.50.293 FRAME 2A, engine assembly Spares for:—	—	—	—
R EE11/2 EXTRUSION (SAS 4769) Attaching parts for EE11/2:—	QR	—	4/40
R EC1099 Adhesive (SAS 4769)	QR	—	—
EB7.50.37 OUTLET, WHEELCASE, BREATHER, ASSEMBLY Spares for:—	1	—	4/32
EB7.50.41 RING, sealing	1	Bestobell	4/33
EA1.50.393	. PIN, turbine starter, exhaust, pipe locating	2	DTD 126	4/34
EA3.50.21	. PIPE, engine starter, exhaust	2	—	4/35
EA1.50.111	. ROD-END, fitting, toggle fastener Attaching parts for EA1.50.111:—	1	L40	3/19
SP4Y/D15	. Pin, shackle	1	—	3/20
EA1.50.119	. ROD, toggle fastener	4	S11	3/21
EA1.50.121	. ROD, toggle fastener	1	S11	3/22
EA1.50.123	. ROD, toggle fastener	1	S11	3/23
EA1.50.125	. ROD, toggle fastener	2	S11	3/24
EA1.50.129	. ROD, toggle fastener	4	S96	3/25
EA1.50.131	. ROD, toggle fastener	2	S96	3/26
EA1.50.133	. ROD, toggle fastener	2	S96	3/27
EEAS1/8E	. SCREW, 1/4" BSF 120° c'sk head	2	S96	3/28
EA1.50.101	. SPRING, toggle hook tension	4	Spring Steel	3/29



POWER INSTALLATION
COWLING, ENGINE, STARBOARD

Part Number	Description	No. Off	Matl. Spec.	Plate No.
				1 2 3 4 5 6
-	COWLING, ENGINE, STARBOARD, ASSEMBLY (EA1.50.396) Spares for:-	-	-	3/30
EA1.50.103	. CLIP, toggle, hook spring	2	L72	3/2
EA1.50.105	. CLIP, toggle, hook spring Attaching parts for EA1.50.103 and EA1.50.105:-	2	L72	3/3
AS1246/1B	. Bolt, 4 BA round head	1	-	3/4
AGS2001/B/1	. Nut, stiff, 4 BA	1	-	3/5
SP13/B	. Washer, 4 BA plain	1	-	3/6
EA3.00.122	. COWL, FRONT, GROUP (Supplied with trim allowance)	1	-	4/36
EA1.50.250	. COWL, FRONT, GROUP (Supplied to Part No. EA3.00.124 with trim allowance and pilot holes) Spares for:-	1	-	4/37
EA1.50.843	. . AIR INTAKE, ASSEMBLY Spares for:-	1	-	4/3
EA1.50.1055	. . . COVER, plate, debris guard attachment plate	2	L72	4/4
-	. . . FRAME, FLANGED RING, ASSEMBLY (EA1.50.1833) Spares for:-	-	-	4/5
EEAS75 SEAL	1	K099F Linatex	4/6
EA1.50.1673	. . . PLATE, louvre	2	DTD166B	4/7
EA1.50.1597	. . . SCREEN, perforated, 18 SWG	38	Comm. Alum.	4/8
EA1.50.1823	. . . SLEEVE, exhaust outlet	1	-	4/9
EA3.00.239	. . BAFFLE, bleed valve air duct (Supplied undrilled with trim allowance)	1	-	4/11
EA1.50.1753	. . DUCT, air compression, bleed valve Attaching parts for EA1.50.1753:-	1	-	4/12
EEAS1/1.1/2C	. . Screw, 2 BA 120° c'sk head	14	S96	4/13
EA1.50.1761	. . PANEL, access, for adjustment of accelerator and bleed valve control	3	-	4/14
EA1.50.1779	. . PANEL, access, for bleed valve adjustment Attaching parts for EA1.50.1779:-	1	-	4/15
EEAS1/1C	. . Screw, 2 BA 120° c'sk head	8	S96	4/16
EA1.50.1805	. . PANEL, access, P.V. ram Attaching parts for EA1.50.1805:-	1	L72	4/17
AS1242/1C	. . Bolt, 2 BA c'sk head	8	-	4/18
EA1.50.1807	. . PANEL, access, P.V. ram Attaching parts for EA1.50.1807:-	1	L72	4/19
AS1242/1C	. . Bolt, 2 BA c'sk head Attaching parts for EA1.50.250:-	8	-	4/20
EA1.50.1051	. Screw, special	41	S11	3/7

POWER INSTALLATION
COWLING, ENGINE, STARBOARD

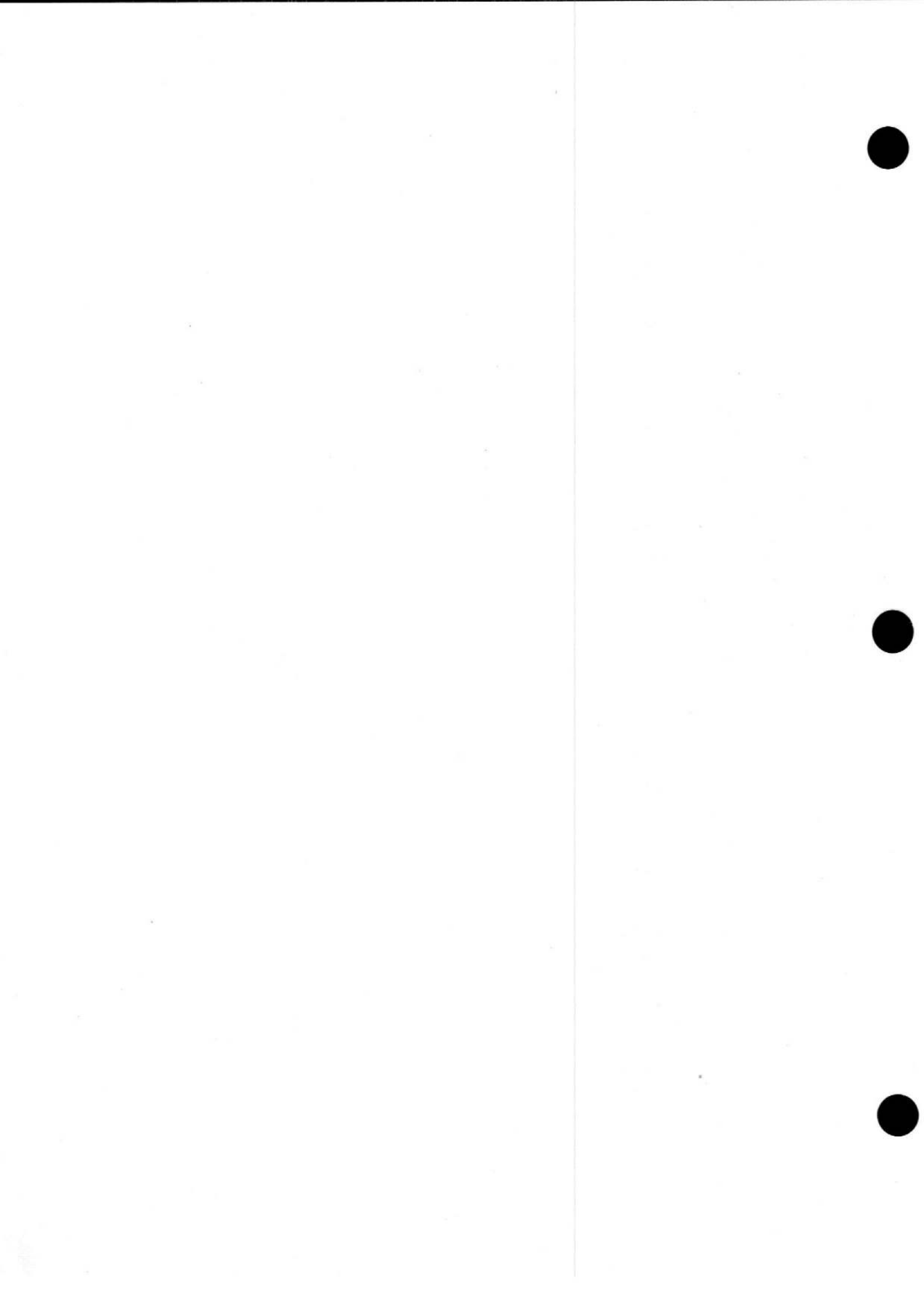
Part Number	Description	No. Off	Matl. Spec.	Plate No.
EA3.50.24	. COWL, BOTTOM, REAR (LESS U/C COWL DOOR), GROUP (For aircraft WD951 and onwards, supplied drilled to Part No. EA3.00.264 with trim allowance) Spares for:—	1	—	5/60
EA1.50.66	. BRACKET, forward hinge, u/c cowl door Attaching parts for EA1.50.66:—	1	L40	5/61
A25/20C	. Bolt, 2 BA hex. head	4	—	5/3
A27/CT	. Nut, 2 BA thin	4	—	5/4
SP15/C	. Washer, 2 BA plain	4	—	5/5
EA1.50.68	. BRACKET, aft hinge, u/c cowl door Attaching parts for EA1.50.68:—	1	L40	5/62
A25/20C	. Bolt, 2 BA hex. head	2	—	5/7
A25/21C	. Bolt, 2 BA hex. head	2	—	5/8
A27/CT	. Nut, 2 BA hex. head	4	—	5/9
SP15/C	. Washer, 2 BA plain	2	—	5/10
SP16/C	. Washer, 2 BA plain	2	—	5/11
—	. COWL, BOTTOM, REAR (EA3.50.26) Spares for:—	—	—	5/63
EA1.50.1601	. PLATE, engine oil sump drainage pipe, retaining	1	—	5/13
EA6.50.991	. SPRING, funnel, assembly, for air duct	1	—	5/14
EA1.50.318	. DOOR, access, in bottom rear cowl	1	—	5/63
EA1.50.320	. DOOR, undercarriage cowl (Supplied with trim allowance) Attaching parts for EA1.50.320:—	1	—	5/65
AGS899/6	. Collar, 5/16"	2	—	5/17
SP4Z/F10	. Pin, shackle	1	—	5/18
SP4Z/F18	. Pin, shackle	1	—	5/19
SP90/C7	. Pin, split	2	—	5/20
EA1.50.365	. Washer	2	L46	5/21
FJ5/60DS	. FASTENER, dzus	4	—	5/22
FJ5/70DS	. FASTENER, dzus	4	—	5/23
FJ5/80DS	. FASTENER, dzus	2	—	5/24
EA1.50.281	. FASTENER, TOGGLE, GROUP Spares for:—	2	—	5/25
EA1.50.95	. HANDLE, TOGGLE FASTENER, GROUP Spares for:—	1	—	5/26
169/1	. RING, split	1	—	5/27
EA1.50.49	. SPRING, 19 SWG	1	Spring Steel	5/28
EA1.50.155	. Pin, stud, special	2	S11	5/29
SP90/C7	. Pin, split	2	—	5/30
EA1.50.282	. FASTENER, TOGGLE, GROUP Spares for this group are identical with those for Part No. EA1.50.281	2	—	5/31

POWER INSTALLATION
COWLING, ENGINE, STARBOARD

Ref. No.	Part No.	Description	No. off	Matl. Spec.	Cl. of Equip. M.R. L.M.	Fig. and Index
634	E.A1.50.282	FASTENER, TOGGLE, GROUP Spares for this group are identical with those for Part No. E.A1.50.281 on page LC3	2	-	C	5/31
636	E.A1.50.283	FASTENER, TOGGLE, GROUP Spares for:-	2	-	C	5/32
7133	E.A1.50.97	HANDLE, TOGGLE FASTENER, GROUP Spares for:-	1	-	C/MR	5/33
28E/9153406	169/1	RING, split	1	-	C	5/34
635	E.A1.50.49	SPRING, 19 SWG	1	Spring Steel	C	5/35
17661	E.A1.50.157	Attaching parts for E.A1.50.97:- Pin, stud, special	2	S.11	C	5/36
28P/1220716	SP.90/E4	Pin, split	2	-	C	5/37
637	E.A1.50.284	FASTENER, TOGGLE, GROUP Spares for this group are identical with those for Part No. E.A1.50.283	2	-	C	5/38
28FP/4062396	FJ.5/60DS	FASTENER, dzus	4	-	C	5/55
28FP/4062398	FJ.5/70DS	FASTENER, dzus	4	-	C	5/56
28FP/4062400	FJ.5/80DS	FASTENER, dzus	2	-	C	5/57
28FP/341	S.5/325	SPRING, dzus	8	-	C	5/58
6503	E.A1.50.1793	WASHER, cup, engine cowling, dzus fastener retaining	10	DTD.124A	C	5/59
640	E.A1.50.109	FORK-END, fitting, toggle fastener Attaching parts for E.A1.50.109:-	2	S.11	C	3/9
28P/864	SP.4Y/D6	Pin, shackle	1	-	C	3/10
642	E.A1.50.135	FORK-END, fitting, toggle fastener Attaching parts for E.A1.50.135:-	6	L.40	C	3/11
28P/864	SP.4Y/D6	Pin, shackle	1	-	C	3/12
643	E.A1.50.137	FORK-END, fitting, toggle fastener Attaching parts for E.A1.50.137:-	8	L.40	C	3/13
28P/9106037	SP.4Y/F10	Pin, shackle	1	-	C	3/14
644	E.A1.50.391	FORK-END, fitting, toggle fastener Attaching parts for E.A1.50.391:-	1	L.40	C	3/15
28P/9483204	SP.4Y/D10	Pin, shackle	1	-	C	3/16
645	E.A1.50.29	HOOK, cowl, toggle fastener	8	S.11	C	3/17
646	E.A1.50.45	HOOK, cowl, toggle fastener	10	S.11	C	3/18

POWER INSTALLATION
COWLING, ENGINE, STARBOARD

Part Number	Description	No. Off	Mtl. Spec.	Plate No.
EA1.50.14	. PANEL, ENGINE SERVICE, GROUP Spares for this group are identical with those for port group Ref. No. 3040 on page LB5, except for the following deletion and addition Delete:—	1	—	4/38
—	. . . PANEL, SERVICE, ASSEMBLY (EA1.50.291) Add:—	—	—	4/30
—	. . . PANEL, SERVICE, ASSEMBLY (EA1.50.292) Spares for this assembly are identical with those for assembly EA1.50.291 on page LB5 except for the following deletion and addition Delete:—	—	—	4/39
R EA1.50.293 FRAME 2A, engine assembly Add:—	—	—	
R EA1.50.294 FRAME 2A, engine assembly	—	—	
EA1.50.393	. PIN, turbine starter, exhaust, pipe locating	2	DTD126	4/34
EA3.50.21	. PIPE, engine starter, exhaust	2	—	4/35
EA1.50.111	. ROD-END, fitting, toggle fastener Attaching parts for EA1.50.111:—	1	L40	3/19
SP4Y/D15	. Pin, shackle	1	—	3/20
EA1.50.119	. ROD, toggle fastener	4	S11	3/21
EA1.50.121	. ROD, toggle fastener	1	S11	3/22
EA1.50.123	. ROD, toggle fastener	1	S11	3/23
EA1.50.125	. ROD, toggle fastener	2	S11	3/24
EA1.50.129	. ROD, toggle fastener	4	S96	3/25
EA1.50.131	. ROD, toggle fastener	2	S96	3/26
EA1.50.133	. ROD, toggle fastener	2	S96	3/27
EEAS1/8E	. SCREW, 1/4" BSF 120° c'sk head	2	S96	3/28
EA1.50.101	. SPRING, toggle hook tension	1	Spring Steel	3/29



POWER INSTALLATION
ENGINE MOUNTINGS AND ATTACHMENTS
PORT

Part Number	Description	No. Off	Matl. Spec.	Plate No.
—	ENGINE MOUNTINGS AND ATTACHMENTS PORT ASSEMBLY (EA1.51.1) Spares for:—	—	—	
EA1.51.17	. BEARING, spherical seating rear engine mounting	2	S11	6/1
R EA1.51.211	. BRACKET, ENGINE MOUNTING REAR ASSEMBLY (Mod. 5045) (Consisting of:—	1	—	6/2
R EK5.51.611	. . BRACKET, mounting (Mod. 5045)	1	—	6/3
R EA1.51.215	. . CAP, retaining spherical bearing (Mod. 5045)	1	—	6/4
R	Attaching parts for EA1.51.215:—			
R A27JS	. . Nut, slotted, 3/8" BSF	1	—	6/4A
R A27LS	. . Nut, slotted, 7/16" BSF	1	—	6/4B
R SP90C8	. . Pin, split	1	—	6/4C
R SP90C9	. . Pin, split	1	—	6/4D
R SP122J	. . Washer, 3/8" dia	1	—	6/4E
R SP122L	. . Washer, 7/16" dia	1	—	6/4F
R EA1.51.213	. . STUD, (Mod. 5045)	1	—	6/18
R EA1.51.15	. . STUD, (Mod. 5045)	1	—	6/7
R	Attaching parts for EA1.51.15 and EA1.51.213:—			
R EA1.51.207	. . Screw grub	1	S11	6/8
R	Attaching parts for EA1.51.211:—			
R A25/8G	. Bolt, 5/16" BSF hex head	6	—	6/9
R A27GP	. Nut, 5/16" BSF plain	6	—	6/10
R EA1.51.209	. Shim (if required)	2	—	6/11
R SP15G	. Washer, 5/16" BSF plain	6	—	6/12
R EA1.51.212	. BRACKET ENGINE MOUNTING REAR ASSEMBLY (Mod. 5045) (Consisting of:—	1	—	6/13
R EK5.51.612	. . BRACKET, mounting (Mod. 5045)	1	—	6/14
R EA1.51.215	. . CAP, retaining spherical bearing (Mod. 5045)	1	—	6/15
R	Attaching parts for EA1.51.215:—			
R A27JS	. . Nut, slotted, 3/8" BSF	1	—	6/4A
R A27LS	. . Nut, slotted, 7/16" BSF	1	—	6/4B
R SP90C8	. . Pin, split	1	—	6/4C
R SP90C9	. . Pin, split	1	—	6/4D
R SP122J	. . Washer, 3/8" dia	1	—	6/4E
R SP122L	. . Washer, 7/16" dia	1	—	6/4F
R EA1.51.213	. . STUD, (Mod. 5045)	1	—	6/18
R EA1.51.15	. . STUD, (Mod. 5045)	1	—	6/7
R	Attaching parts for EA1.51.15 and EA1.51.213:—			
R EA1.51.207	. . Screw, grub	1	S11	6/19
R	Attaching parts for EA1.51.212:—			
R A25/8G	. Bolt, 5/16" BSF hex head	6	—	6/20
R A27GP	. Nut, 5/16" BSF plain	6	—	6/21
R EA1.51.209	. Shim (if required)	2	—	6/22
R SP15G	. Washer, 5/16" BSF plain	6	—	6/23

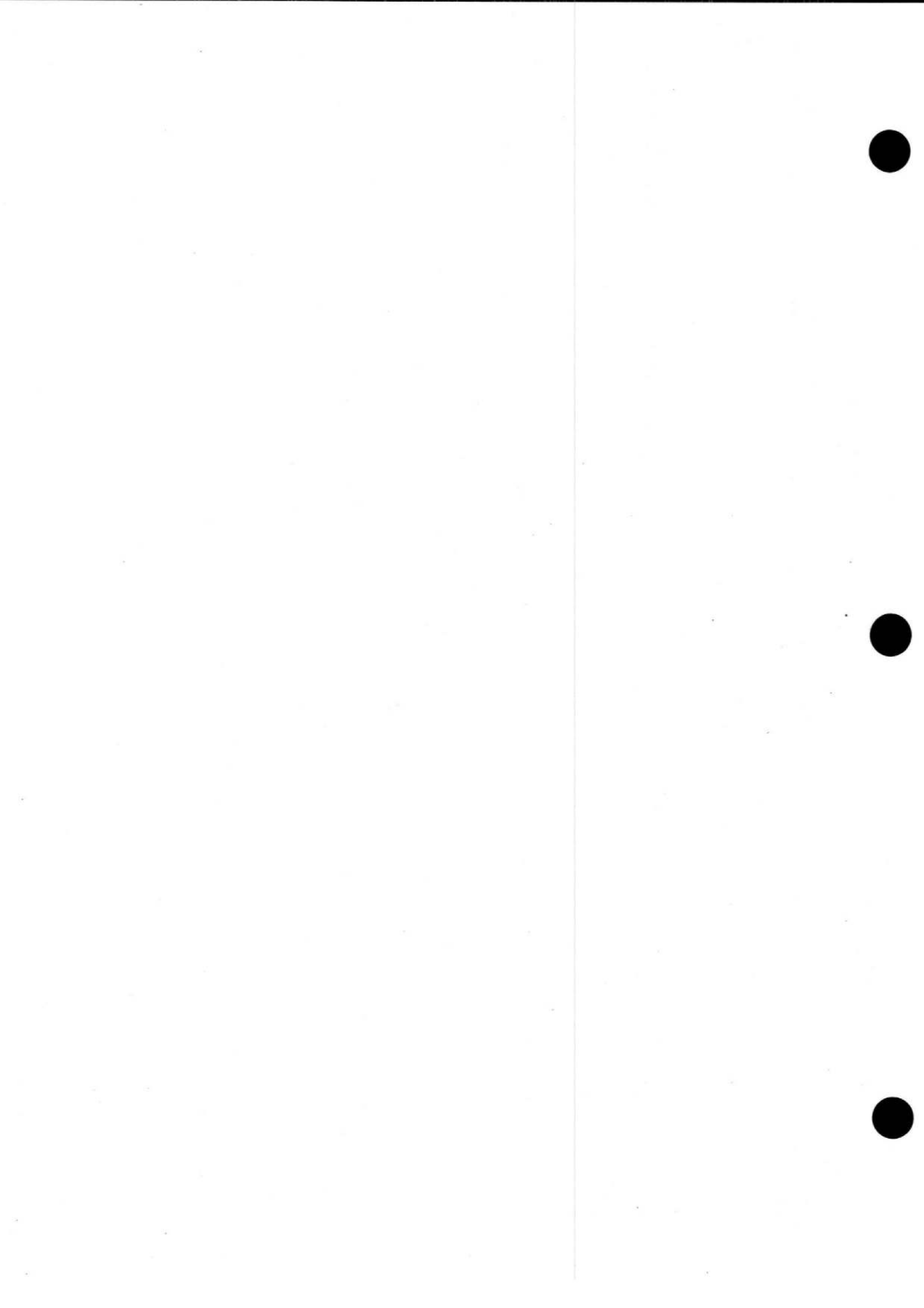
POWER INSTALLATION
ENGINE MOUNTINGS AND ATTACHMENTS
PORT

Part Number	Description	No. Off	Matl. Spec.	Plate No.
R EA1.51.229	. MOUNTING ENGINE FORWARD INBOARD ASSEMBLY (Mod. 5048) Spares for:—	1	—	6/24
EA1.51.33	. . BOLT, shouldered engine mounting	1	S11	6/25
R EA1.51.225	. . BRACKET, engine mounting (Mod. 5048) (Pre-Mod. 5240) port	1	BAC M44	6/26
EA1.51.233	. . BRACKET, engine mounting (Mod. 5240) port	1	—	
EA1.51.45	. . FORKEND, for tie rod	1	S96	6/27
EA1.51.27	. . NUT, locking plug retaining	1	L40	6/28
R A27/PT	. . NUT, 9/16"	1	—	6/60
R A27/JS	. . NUT, slotted, 3/8" BSF	1	—	6/28A
R SP90/C7	. . PIN, split	1	—	6/28B
EA1.51.25	. . PLUG, retaining tie rod ball end	1	L40	6/29
EA1.51.43	. . ROD, tie adjustable spherical end	1	S65	6/30
R SP16/J	. . WASHER	1	—	6/30A
R EA1.51.37	. Bolt, eye lower engine bracket and control bracket mounting	1	S11	6/31
R EA1.51.39	. Bolt, eye upper engine bracket and control bracket mounting	1	S11	6/32
R EEAS222/11G	. Bolt, 5/16" BSF hex head	2	—	6/33
R A27GS	. Nut, slotted 5/16" BSF	2	—	6/35
R SP90C7	. Pin, split	2	—	6/35A
R SP125G	. Washer, 5/16" plain	4	—	6/36

AP101B-0418-3A

POWER INSTALLATION
ENGINE MOUNTINGS AND ATTACHMENTS
PORT

Part Number	Description	No. Off	Mati. Spec.	Plate No.
R EA1.51.231	. MOUNTING, ENGINE, FORWARD OUTBOARD, ASSEMBLY (Mod. 5048) Spares for:—	1	—	6/37
R EA1.51.33	. . BOLT, shouldered, engine mounting	1	S11	6/38
R EA1.51.227	. . BRACKET, engine mounting (Mod. 5048)	1	BAC.M44	6/39
EA1.51.45	. . FORK-END, for tie rod	1	S96	6/40
EA1.51.27	. . NUT, locking, plug retaining	1	L40	6/41
R A27/JS	. . NUT, slotted, 3/8" BSF	1	—	6/41B
R SP90/C7	. . PIN, split	1	—	6/41C
EA1.51.25	. . PLUG, retaining, tie rod ball end	1	L40	6/42
EA1.51.43	. . ROD, tie, spherical end	1	S65	6/43
R SP16/J	. . WASHER Attaching parts for EA1.51.231:—	1	—	6/43A
R EEAS222/11G	. Bolt, 5/16" BSF hex. head	3	—	6/44
R EEAS222/12G	. Bolt, 5/16" BSF hex. head	1	—	6/44A
R A58/GS	. Nut, slotted, 5/16" BSF	1	—	6/45
R SP90/C7	. Pin, split	1	—	6/45A
R SP125/G	. Washer, 5/16" plain	4	—	6/46
EA1.51.19	. PIN, spherical bearing, rear inboard bracket retaining	1	S11	6/47



POWER INSTALLATION
ENGINE MOUNTINGS AND ATTACHMENTS
STARBOARD

Part Number	Description	No. Off	Matl. Spec.	Plate No.
—	ENGINE MOUNTING AND ATTACHMENTS STARBOARD ASSEMBLY (EA1.51.2) Spares for:—	—	—	
EA1.51.17	. BEARING, spherical sealing rear engine mounting	2	S11	6/1
R EA1.51.211	. BRACKET ENGINE MOUNTING REAR ASSEMBLY (Mod. 5045) Consisting of:—	1	—	6/2
R EK5.51.611	. . BRACKET, mounting (Mod. 5045)	1	—	6/3
R EA1.51.215	. . CAP, retaining spherical bearing (Mod. 5045) Attaching parts for EA1.51.215:—	1	—	6/4
R A27JS	. . Nut, slotted, 3/8" BSF	1	—	6/4A
R A27LS	. . Nut, slotted, 7/16" BSF	1	—	6/4B
R SP90C8	. . Pin, split	1	—	6/4C
R SP90C9	. . Pin, split	1	—	6/4D
R SP122J	. . Washer, 3/8" dia	1	—	6/4E
R SP122L	. . Washer, 7/16" dia	1	—	6/4F
R EA1.51.213	. . STUD, (Mod. 5045)	1	—	6/18
R EA1.51.15	. . STUD, (Mod. 5045) Attaching parts for EA1.51.15 and EA1.51.213:—	1	—	6/7
R EA1.51.207	. . Screw, grub Attaching parts for EA1.51.211	1	S11	6/8
A25/8G	. Bolt, 5/16" BSF hex head	6	—	6/9
A27GP	. Nut, 5/16" BSF plain	6	—	6/10
EA1.51.209	. Shim (if required)	2	—	6/11
SP15G	. Washer, 5/16" BSF plain	6	—	6/12
R EA1.51.212	. BRACKET ENGINE MOUNTING REAR ASSEMBLY (Mod. 5045) Consisting of:—	1	—	6/13
R EK5.51.612	. . BRACKET, mounting (Mod. 5045)	1	—	6/14
R EA1.51.215	. . CAP, retaining spherical bearing (Mod. 5045) Attaching parts for EA1.51.215:—	1	—	6/15
R A27JS	. . Nut, slotted, 3/8" BSF	1	—	6/4A
R A27LS	. . Nut, slotted, 7/16" BSF	1	—	6/4B
R SP90C8	. . Pin, split	1	—	6/4C
R SP90C9	. . Pin, split	1	—	6/4D
R SP122J	. . Washer, 3/8" dia	1	—	6/4E
R SP122L	. . Washer, 7/16" dia	1	—	6/4F
R EA1.51.213	. . STUD, (Mod. 5045)	1	—	6/18
R EA1.51.15	. . STUD (Mod. 5045) Attaching parts for EA1.51.15 and EA1.51.213:—	1	—	6/7
R EA1.51.207	. . Screw, grub Attaching parts for EA1.51.212	1	S11	6/19
A25/8G	. Bolt, 5/16" BSF hex head	6	—	6/20
A27GP	. Nut, 5/16" BSF plain	6	—	6/21
EA1.51.209	. Shim (if required)	2	—	6/22
SP15G	. Washer, 5/16" BSF plain	6	—	6/23
R EA6.50.27	. BRACKET, toggle attachment on starboard engine, forward outboard mounting assembly Attaching parts for EA6.50.27:—	1	S96	6/52
R A25/3E	. Bolt, 1/4" BSF	1	—	6/53
R A25/5G	. Bolt, 5/16" BSF	1	—	6/54
R SP15E	. Washer	1	—	6/55
R SP15G	. Washer	1	—	6/56
R SP47E	. Washer, spring	1	—	6/57
R SP47G	. Washer	1	—	6/58

POWER INSTALLATION
ENGINE MOUNTINGS AND ATTACHMENTS
STARBOARD

Part Number	Description	No. Off	Matl. Spec.	Plate No.
R EA1.51.230	. MOUNTING ENGINE FORWARD INBOARD ASSEMBLY (Mod. 5048) Spares for:—	1	—	6/48
EA1.51.33	. . BOLT, shouldered engine mounting	1	S11	6/25
R EA1.51.226	. . BRACKET, engine mounting (Mod. 5048) (Pre-Mod. 5240) starboard	1	BAC M44	6/49
EA1.51.234	. . BRACKET, engine mounting (Mod. 5240) starboard	1	—	
EA1.51.45	. . FORK-END, for tie rod	1	S96	6/27
EA1.51.27	. . NUT, locking plug retaining	1	L40	6/28
R A27/PT	. . NUT, 9/16" BSF	1	—	6/60
R A27/JS	. . NUT, slotted, 3/8" BSF	1	—	6/28A
R SP90/C7	. . PIN, split	1	—	6/28B
EA1.51.25	. . PLUG, retaining tie rod ball end	1	L40	6/29
EA1.51.43	. . ROD, tie adjustable spherical end	1	S65	6/30
R SP16/J	. . WASHER	1	—	6/30A
	Attaching parts for EA1.51.230:—			
R EA1.51.37	. Bolt eye lower engine bracket and control bracket mounting	1	S11	6/31
R EA1.51.39	. Bolt eye upper engine bracket and control bracket mounting	1	S11	6/32
R EEAS222/11G	. Bolt, 5/16" BSF hex head	2	—	6/33
R A27GS	. Nut, slotted 5/16" BSF	2	—	6/35
R A27/GP	. Nut, 5/16" BSF	2	—	6/34
R SP90C7	. Pin, split	2	—	6/35A
R SP125G	. Washer, 5/16" plain	4	—	6/36
R EA1.51.232	. MOUNTING ENGINE FORWARD OUTBOARD ASSEMBLY (Mod. 5048) Spares for:—	1	—	6/50
EA1.51.33	. . BOLT, shouldered engine mounting	1	S11	6/38
R EA1.51.228	. . BRACKET, engine mounting (Mod. 5048)	1	BAC M44	6/51
EA1.51.45	. . FORK-END, for tie rod	1	S96	6/40
EA1.51.27	. . NUT, locking plug retaining	1	L40	6/41
R A27/PT	. . NUT, 9/16" BSF	1	—	6/41A
R A27/JS	. . NUT, slotted, 3/8" BSF	1	—	6/41B
R SP90/C7	. . PIN, split	1	—	6/41C
EA1.51.25	. . PLUG, retaining tie rod ball end	1	L40	6/42
EA1.51.43	. . ROD, tie adjustable spherical end	1	S65	6/43
R SP16/J	. . WASHER	1	—	6/43A
	Attaching parts for EA1.51.232:—			
R EEAS222/11G	. Bolt, 5/16" BSF hex head	3	—	6/44
R EA6.50.29	. Bolt, eye	1	—	6/59
R A58GS	. Nut, slotted 5/16" BSF	1	—	6/45
R SP90C7	. Pin, split	1	—	6/45A
R SP125G	. Washer, 5/16" plain	4	—	6/46
EA1.51.19	. PIN, spherical bearing rear inboard bracket retaining	1	S11	6/47

A.P.101B-0418-3A

POWER INSTALLATION
PIPES, COLD AIR UNIT IN ENGINE BAY,
PORT AND STARBOARD

Page LF1

Ref. No.	Part No.	Description							No. off	Matl. Spec.	Cl. of Equip. M.R. L.M.	Fig. and Index
		1	2	3	4	5	6	7				
	—	PIPES, COLD AIR UNIT, IN ENGINE BAY, PORT AND STARBOARD, INSTALLATION (E.A3.04.11209)							—	—	—	7/1
19854	E.A4.61.107	BRACKET AND CLIP, ENGINE BREATHER PIPE, ASSEMBLY							2	—	B	7/2
		Spares for:—										
32813	E.A4.61.113	CLIP, half							1	—	C	7/3
		Attaching parts for E.A4.61.113:—										
28D/9140644	A25/9C	Bolt, 2 BA hex. head							2	—	C	7/4
28M/1278190	AGS.2001/C/1	Nut, stiff, 2 BA							2	—	C	7/5
19836	E.A3.50.11	PIPE, WHEELCASE BREATHER, PORT AND STARBOARD, ASSEMBLY							2	L.54	B	7/6
		Spares for:—										
1445	EEAS.66/4	RING, clamping							2	L.72	C	7/7
5850	E.A3.50.9	SLEEVE, pipe connecting							1	Silastic	C	7/8
3559	E.A2.75.393	PIPE, ASSEMBLY, H.P. CABIN PRESSURE SYSTEM, PORT ENGINE, GROUP							1	—	B	7/9
		Consisting of:—										
	KING A/C C5623K	COUPLING, flexible pipe							2	—	—	7/10
15207	E.A2.75.397	ELBOW							1	T.26	C	7/11
28F/9517920	AGS.1142/K	NIPPLE							3	—	C	7/12
	E.A2.75.399	PIPE, assembly							1	T.26	—	7/13
R 30A/9610755	†	WIRE, locking, 16 SWG							QR	DTD.189	C	7/14
3560	E.A2.75.395	PIPE, ASSEMBLY, H.P. CABIN PRESSURE SYSTEM, STARBOARD ENGINE, GROUP							1	—	B	7/15
		Consisting of:—										
R 33679	KING A/C C.5623K	COUPLING, flexible							2	—	C	7/16
15211	E.A2.75.419	ELBOW							1	T.26	C	7/17
28F/9517920	AGS.1142/K	NIPPLE							3	—	C	7/18
	E.A2.75.401	PIPE, assembly							1	T.26	—	7/19
R 30A/9610755	†	WIRE, locking, 16 SWG							QR	DTD.189	C	7/20
32814	E.A3.04.11901	WASHER, 10 SWG							2	L.16, L.17, L.34 or L.61	C	7/21

POWER INSTALLATION
PIPES, COLD AIR UNIT IN ENGINE BAY,
PORT AND STARBOARD

Ref. No.	Part No.								No. off	Matl. Spec.	Cl. of Equip. M.R. L.M.	Fig. and Index
		1	2	3	4	5	6	7				

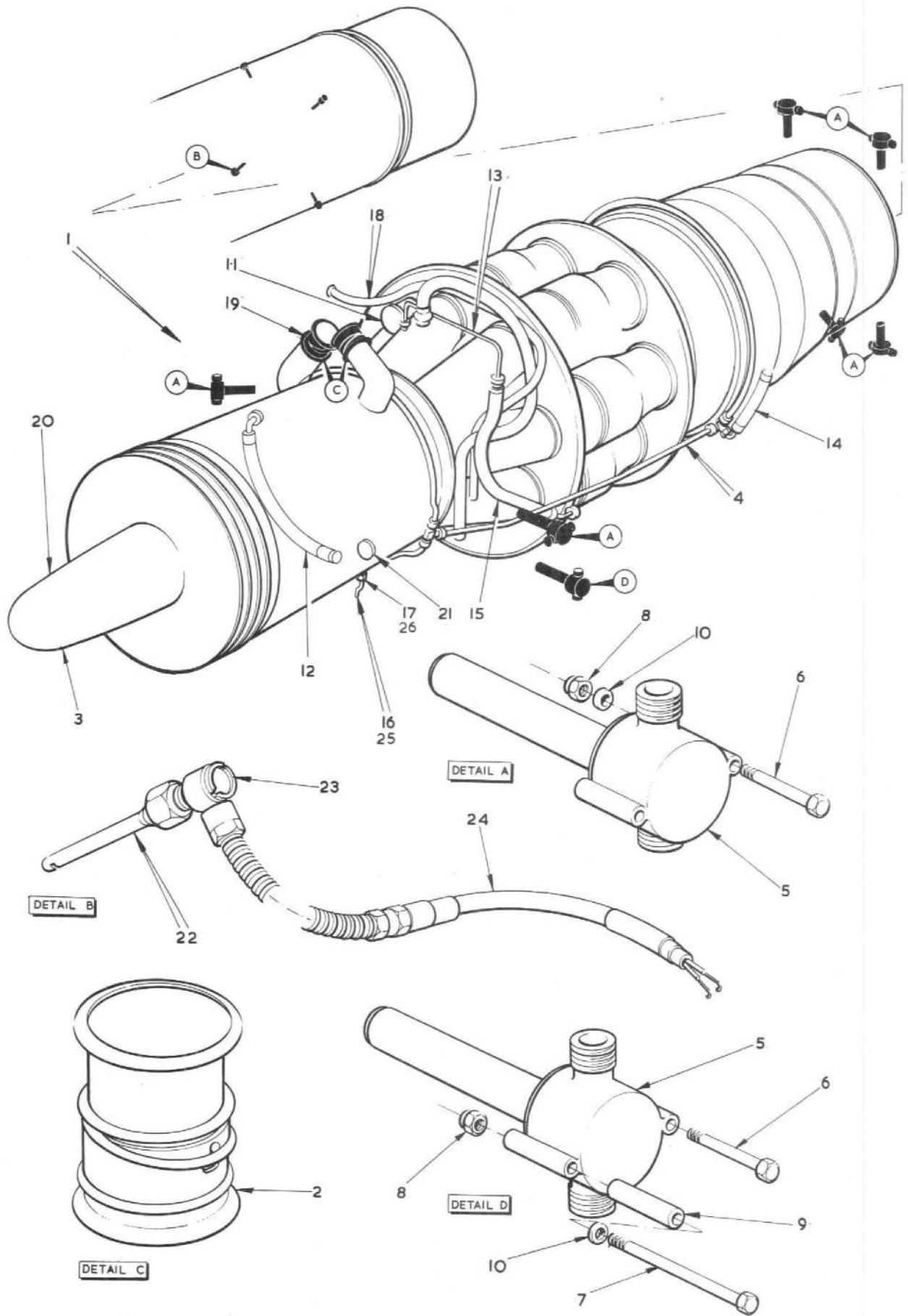


FIG 1 RA3 ENGINE INSTALLATION PORT
Restricted



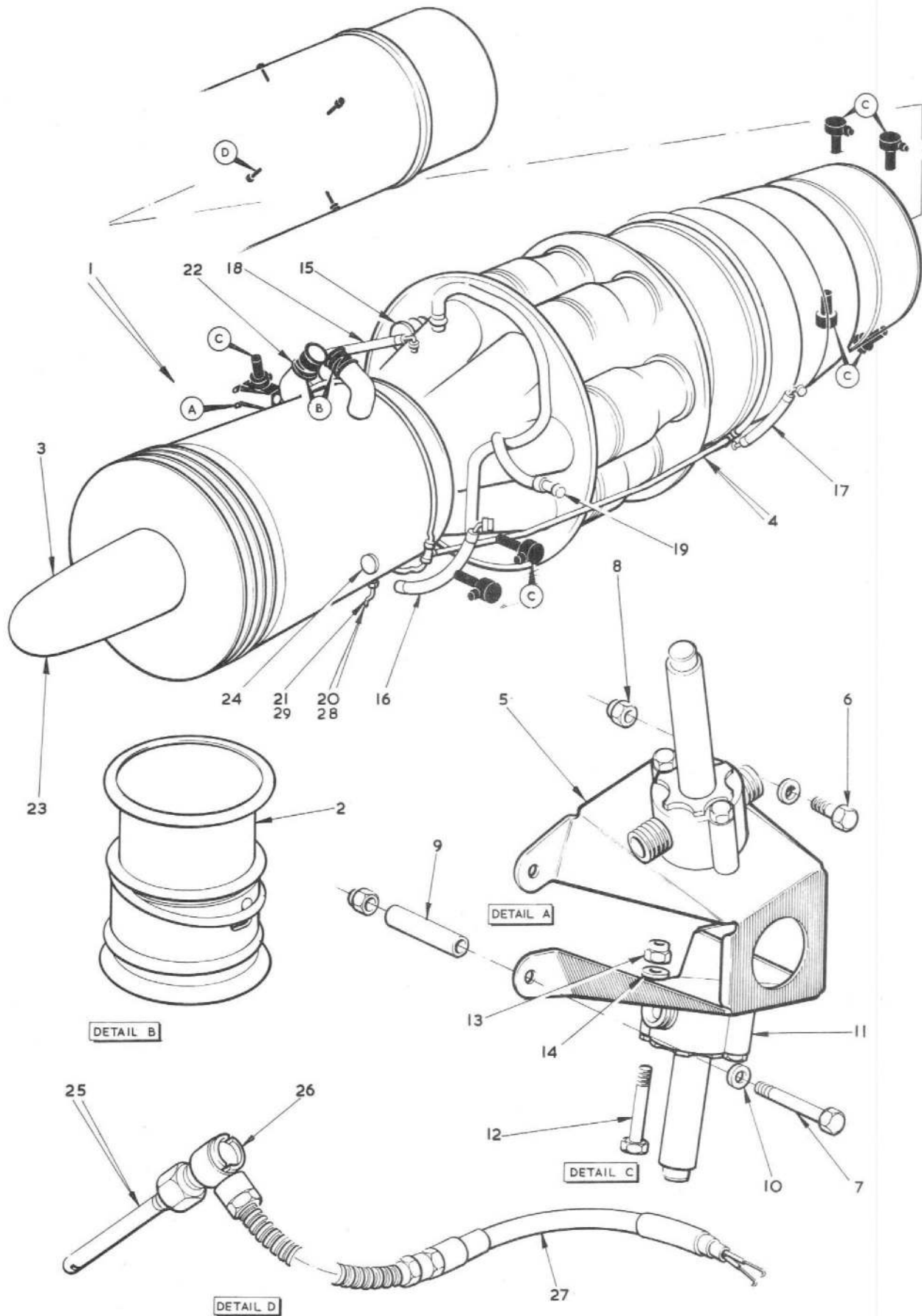


FIG 2 RA3 ENGINE INSTALLATION STBD
Restricted



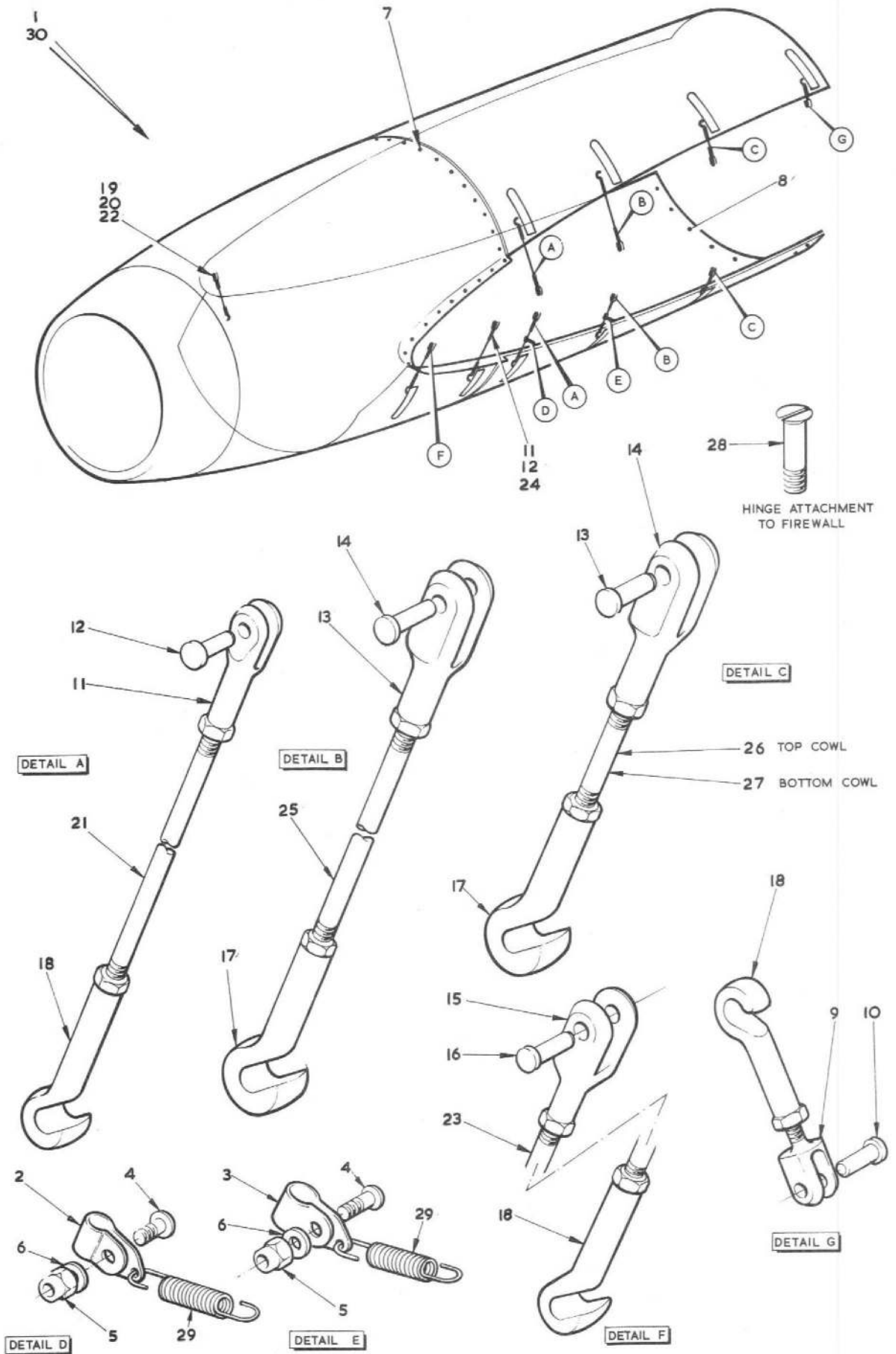
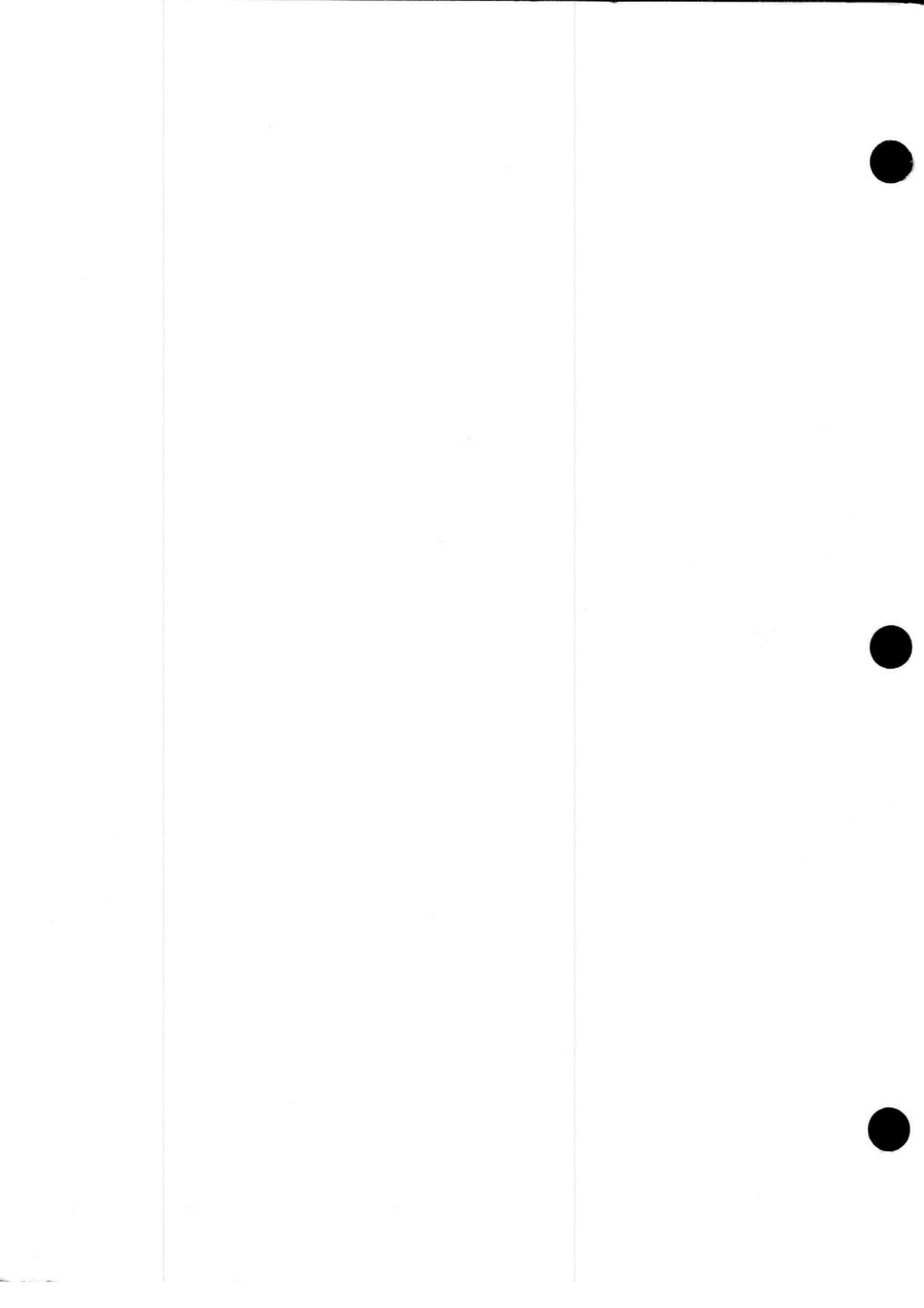


FIG 3 COWLING ENGINE PORT & STBD
Restricted



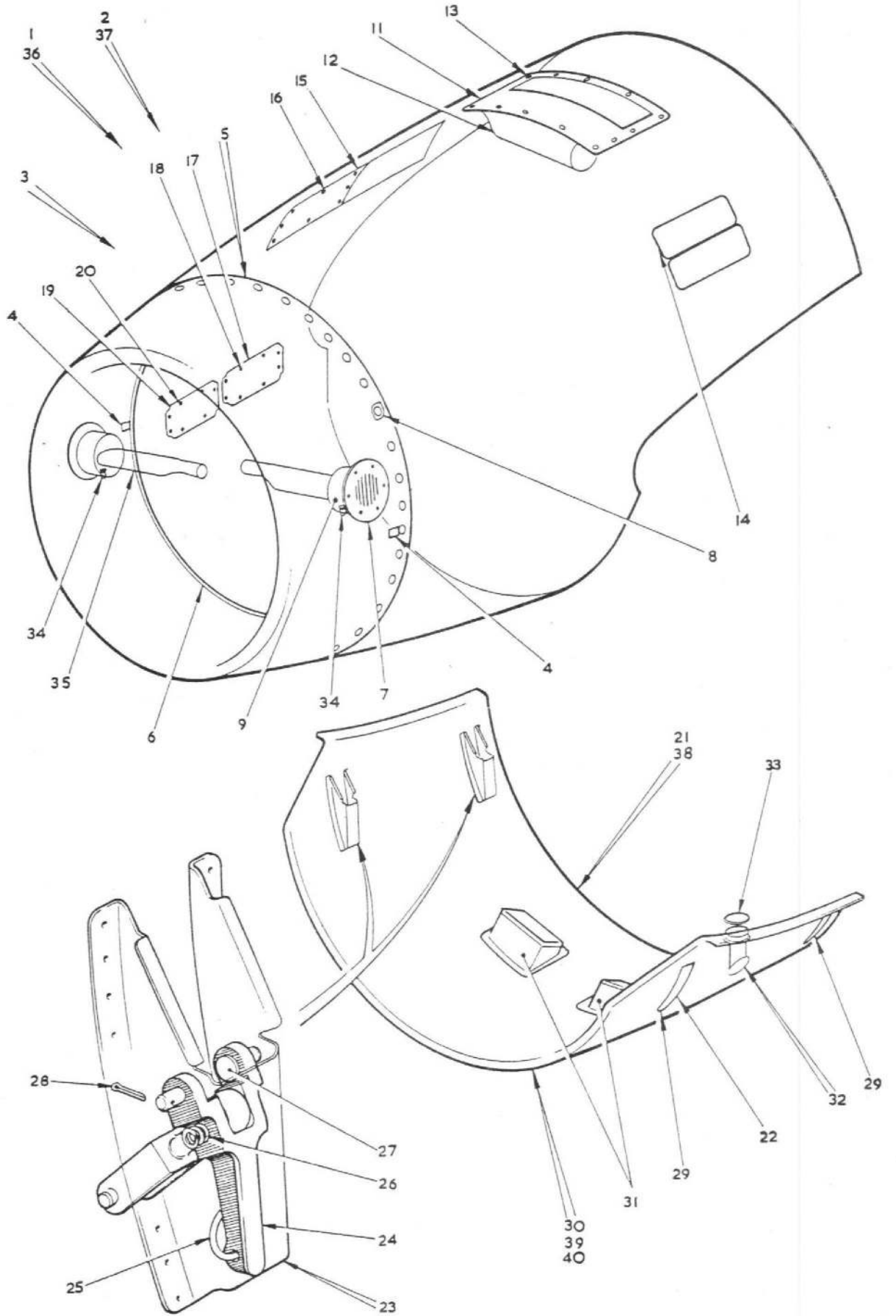
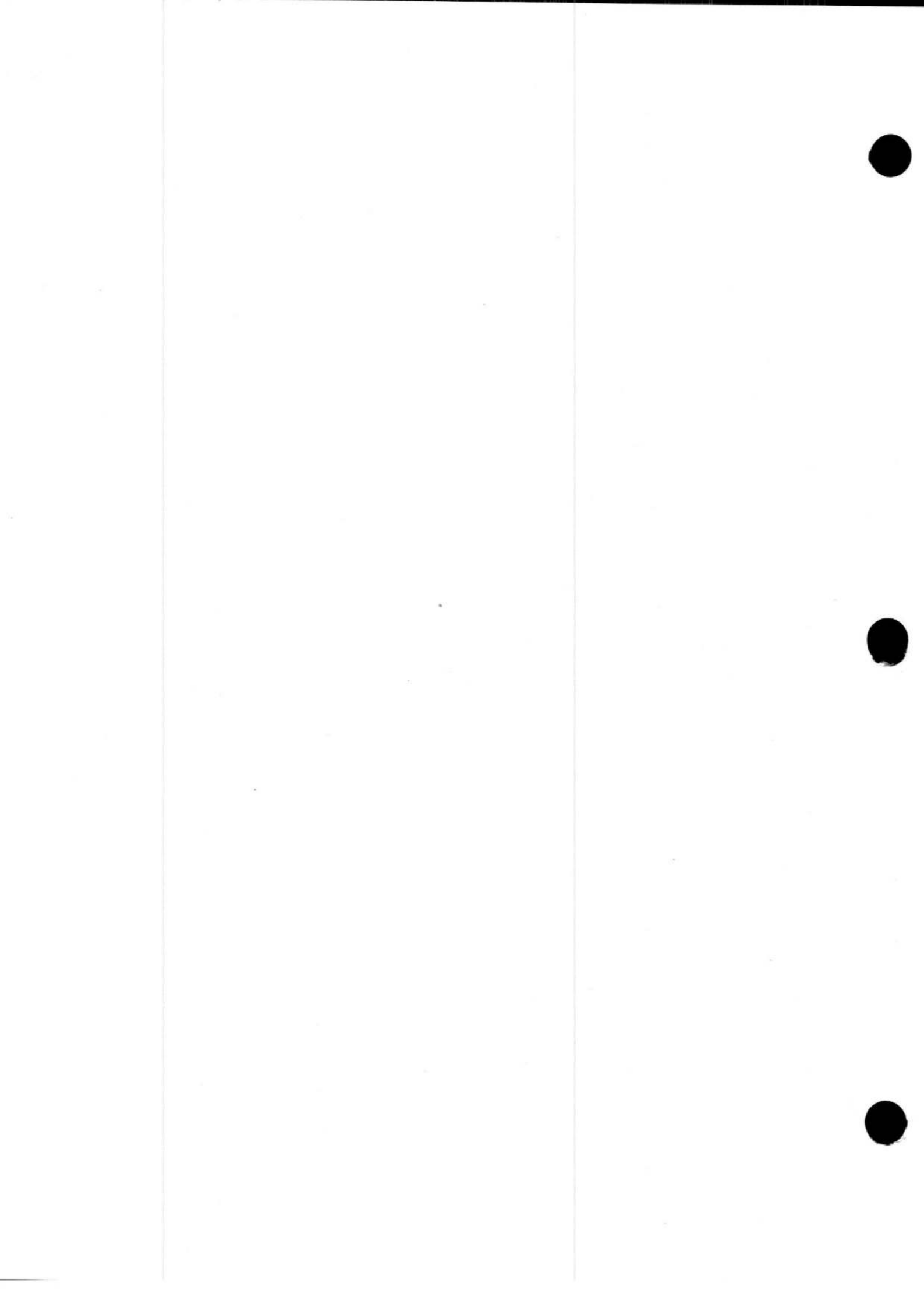


FIG.4 COWLING ENGINE, PORT & STARBOARD



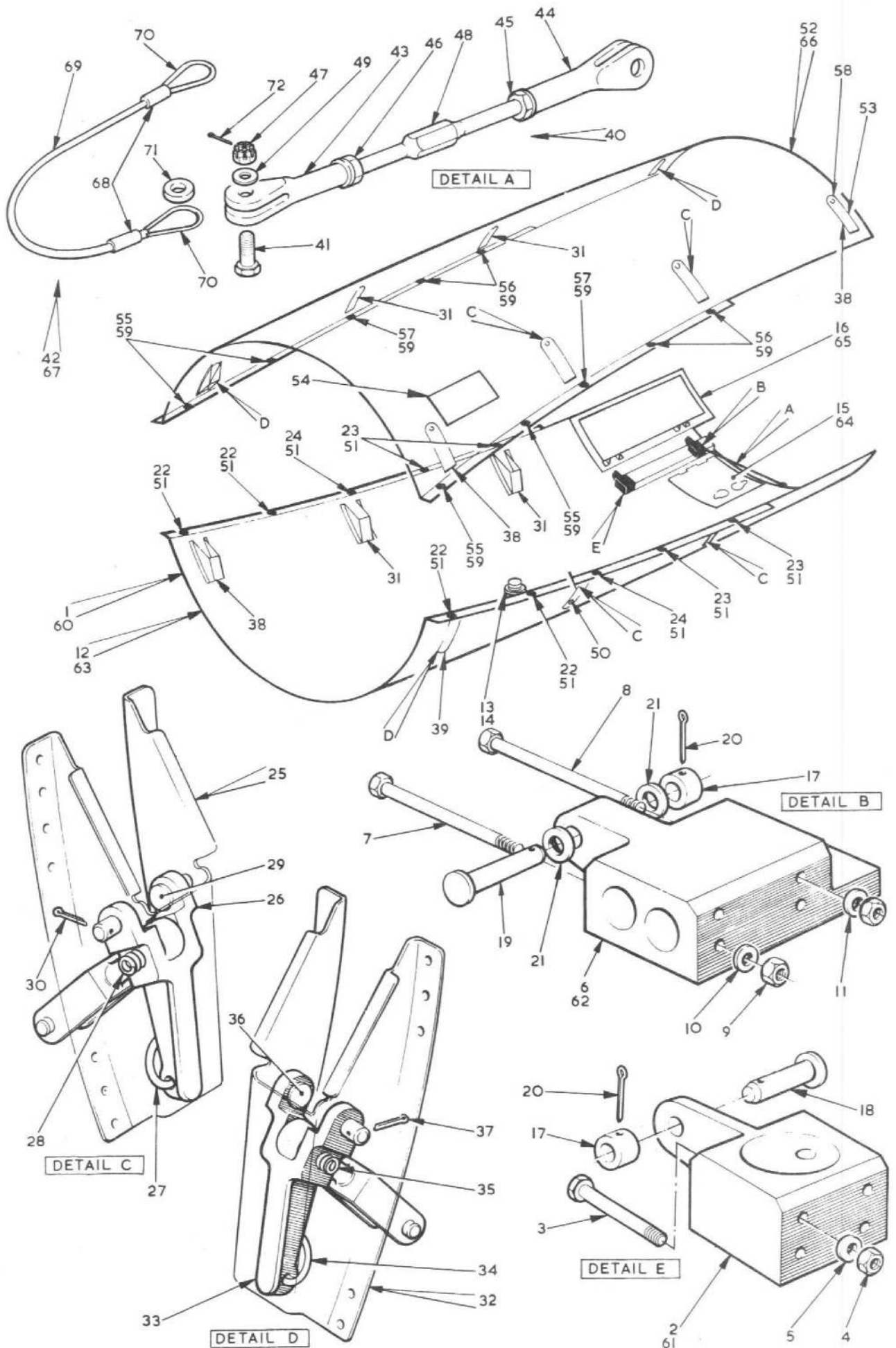
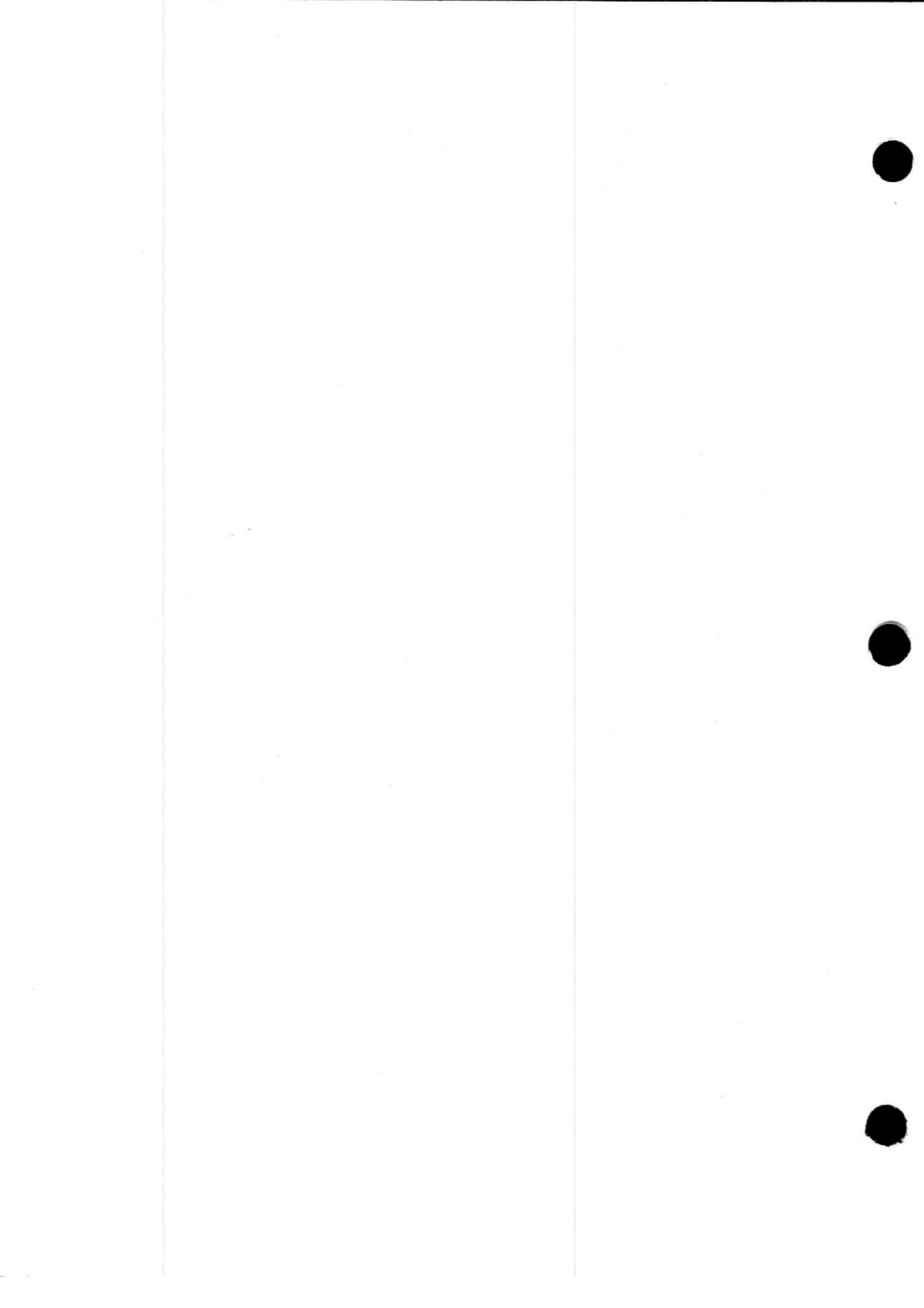


FIG. 5 COWLING ENGINE PORT AND STARBOARD
Restricted



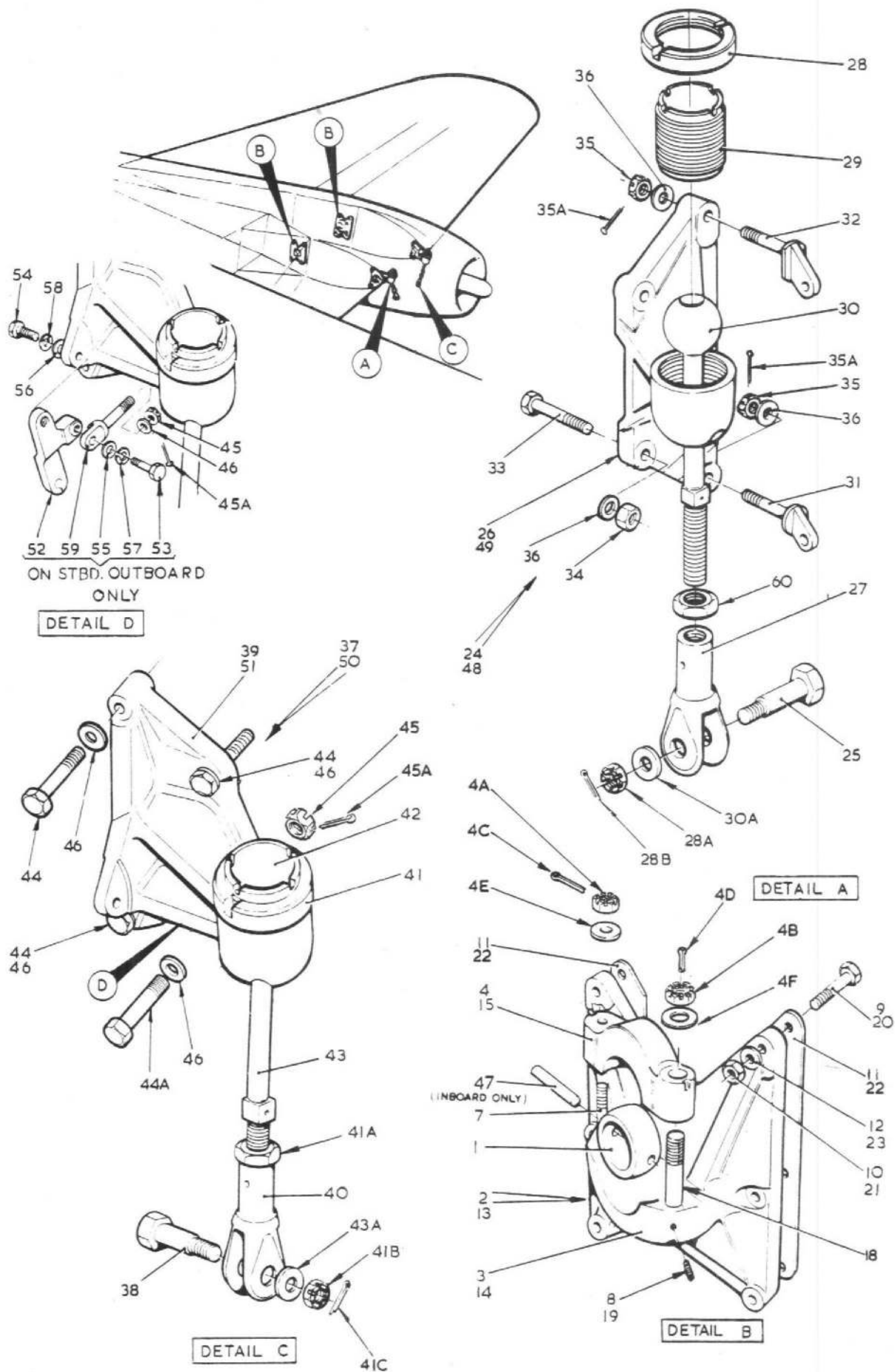
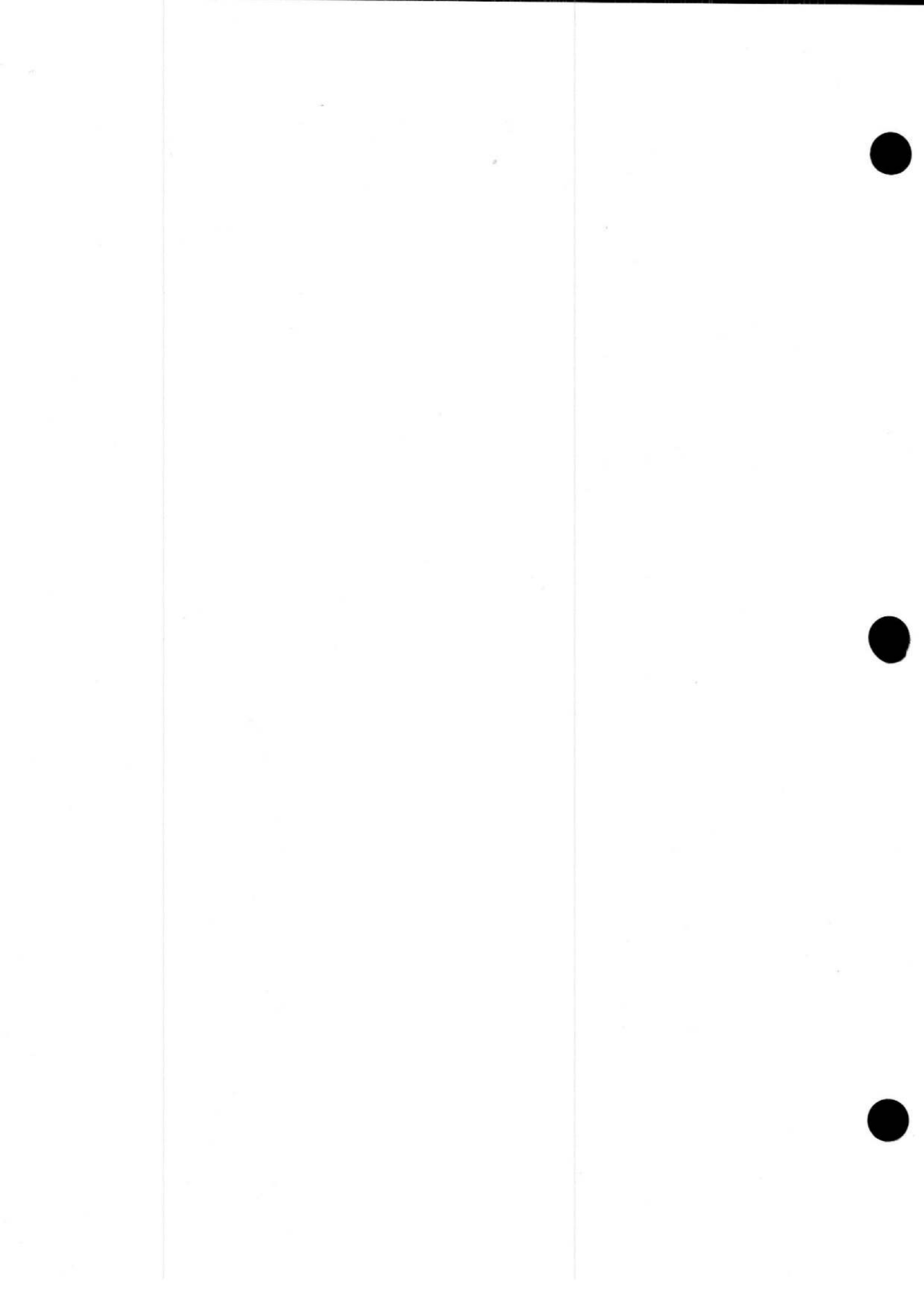


FIG.6 ENGINE MOUNTINGS & ATTACHMENTS, PORT & STBD.



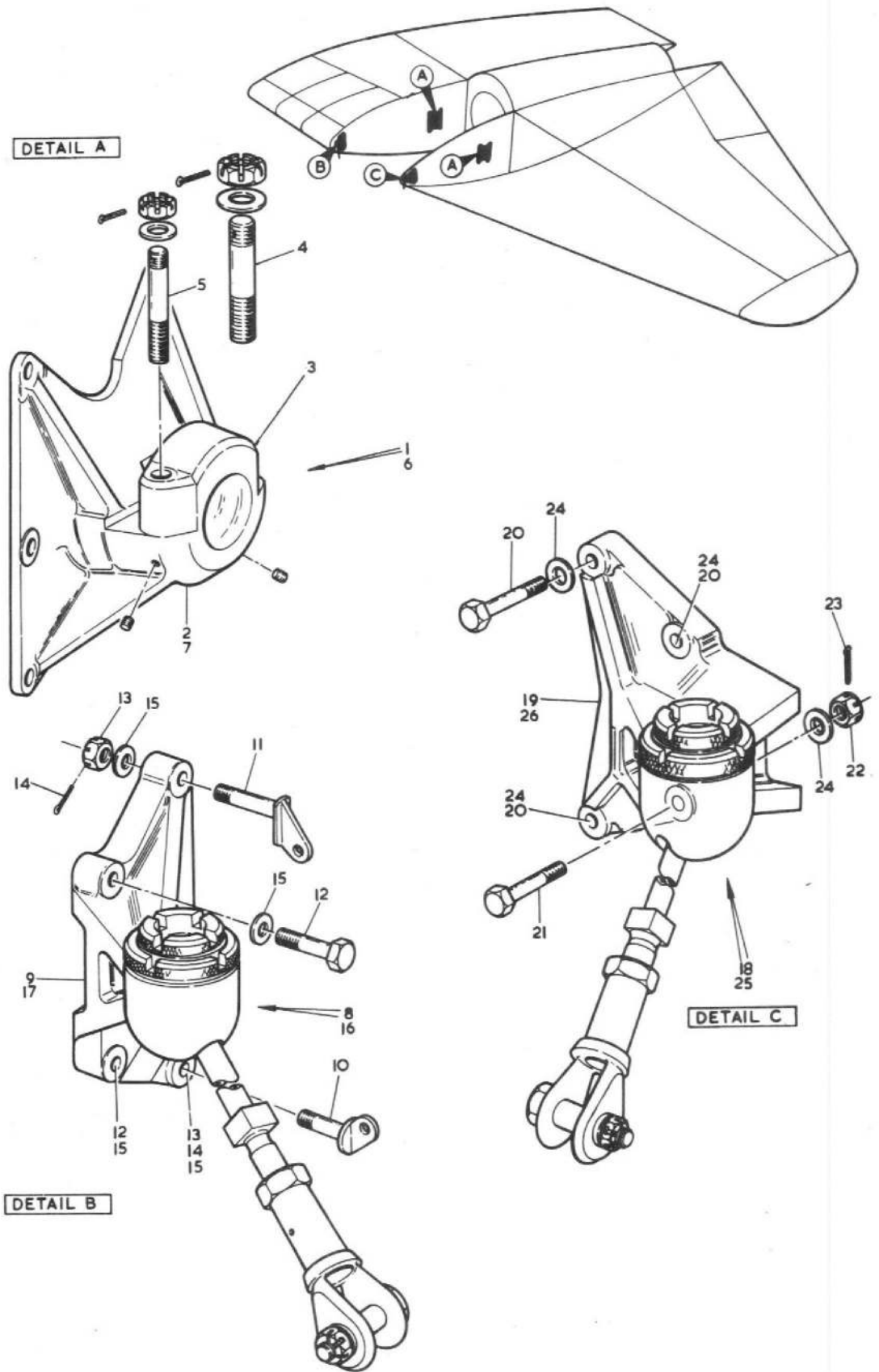
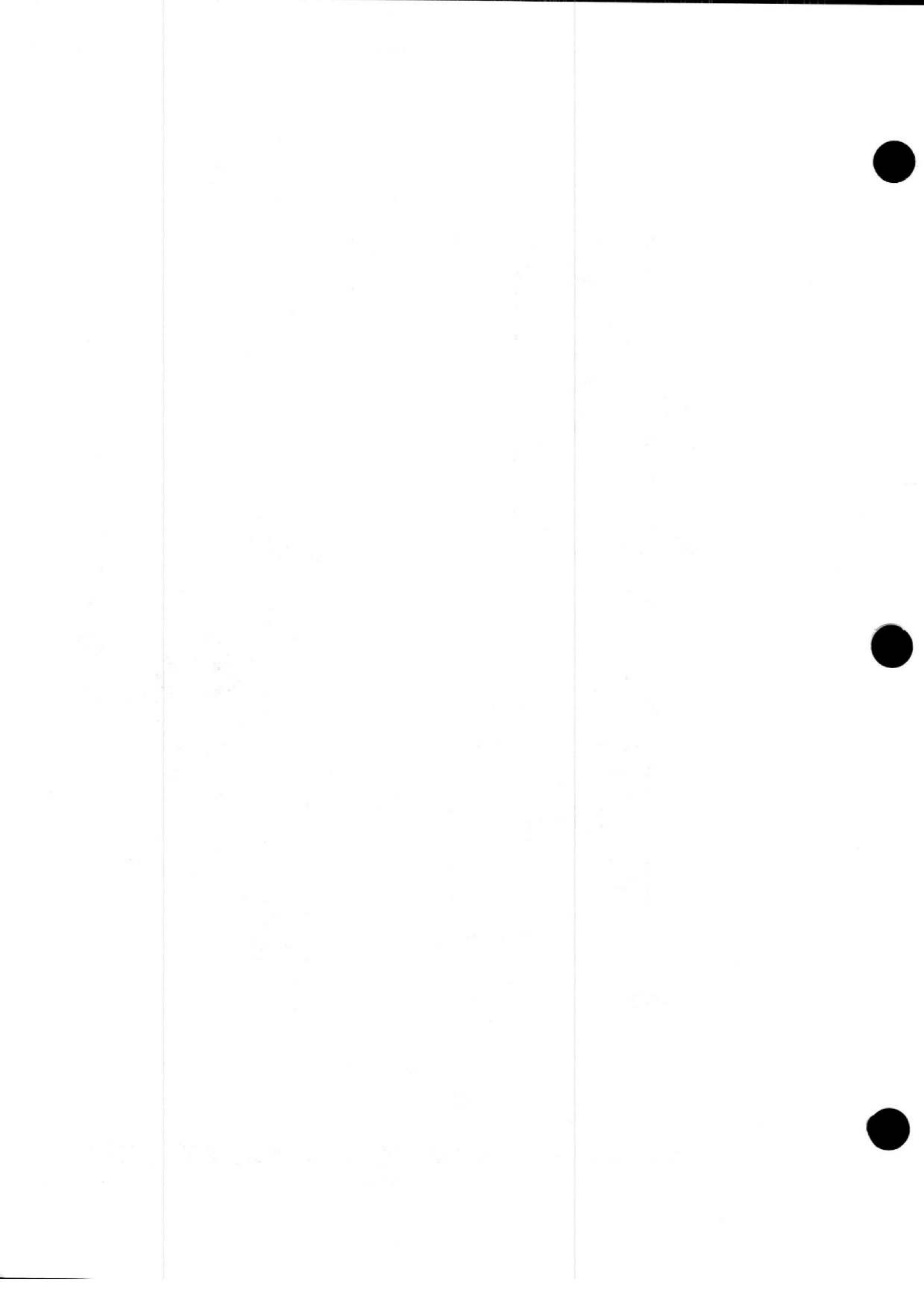


FIG.6A. ENGINE MOUNTINGS AND ATTACHMENTS PORT & STBD.



Restricted

A.L. 3

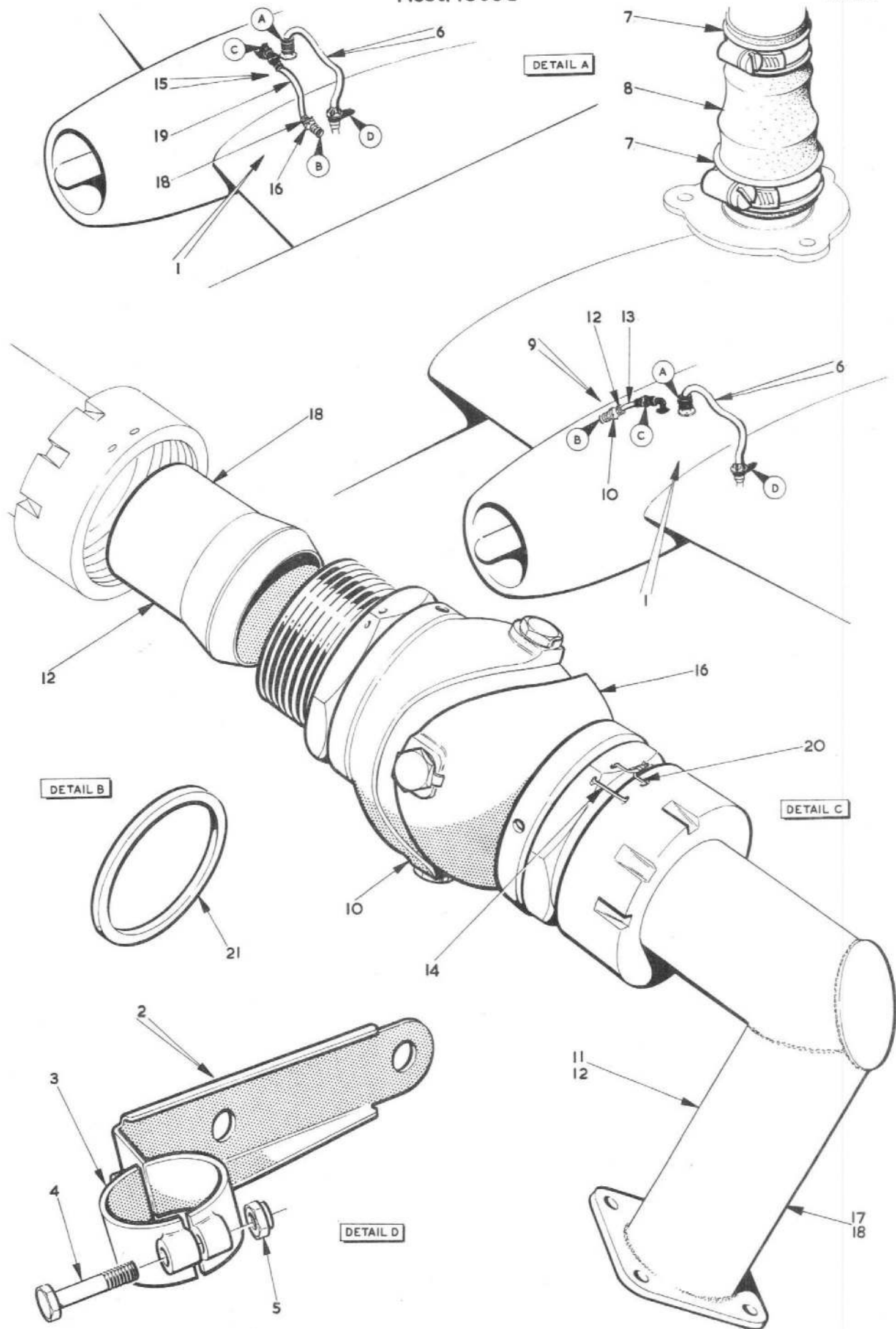
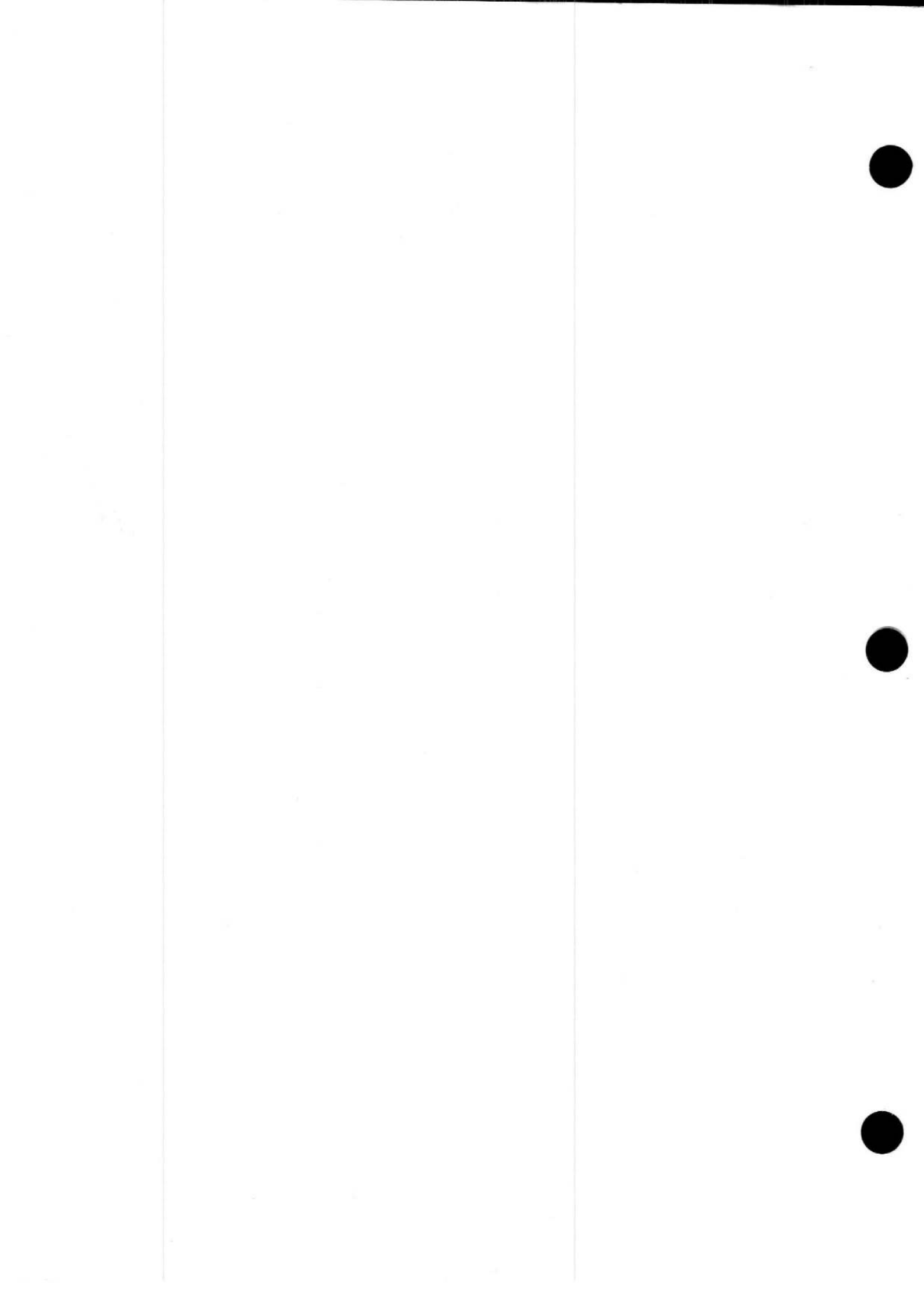


FIG 7 PIPES, COLD AIR UNIT IN ENGINE BAY, P & STBD
Restricted

T.T. MK.18. SECT. L.



This file was downloaded
from the RTFM Library.

Link: www.scottbouch.com/rtfm

Please see site for usage terms,
and more aircraft documents.

