

Chapter 4 GENERAL SERVICING

LIST OF CONTENTS

	Para.		Para.
Tools and equipment	1	Airframe symmetry checks	8
Access panels	2	Aircraft leveling and main-plane	
Jacking and trestling	4	rigging checks	9
Trestling, No.1 engine hatch		◀ Drainage holes, channels and	
removed	5	cutaways	10 ▶
Jacking for wheel changing	6	Walkways and guards	11
Auxiliary jacking positions	7	Blanks	12

LIST OF TABLES

	Table
Special ground equipment	1
Standard ground equipment	2
Access to components	3

LIST OF ILLUSTRATIONS

	Fig.		Fig.		Fig.
Access panels	1 & 2	Access panels in cockpit	8	Ventral tank (Mk.1)	15
Jacking and trestling	3	Vents and drains	9	Port skin drain holes (Mk.1A)... ..	16
Airframe symmetry... ..	4	◀ Port skin drain holes (Mk.1)	10	Starboard skin drain holes (Mk.1A)	17
Aircraft leveling and main-plane		Starboard skin drain holes (Mk.1)	11	No.2 engine bay drainage (Mk.1A)	18
rigging checks	5	No.2 engine bay drainage (Mk.1)	12	No.1 jet pipe bay drainage (Mk.1A)	19
Fuselage walkways and guards	6	No.1 jet pipe bay drainage (Mk.1)	13	Drainage in spine (Mk.1A)	20
Blanks	7	Drainage in spine (Mk.1)	14	Ventral tank (Mk.1A)	21 ▶

WARNING

The relevant safety precautions detailed on the LETHAL WARNING marker card must always be observed before entering the cockpit or performing any operations upon the aircraft.

Tools and equipment

1. Lists of special and standard ground equipment and tools, required for servicing the aircraft, are given in Tables 1 and 2.

Access panels (fig.1, 2 and 8)

2. With the exception of the engine hatches, main-plane leading edges and certain other detachable panels in the main planes, all the hinged or detachable access panels and hatches which form part of the skin are numbered (fig.1 and 2). Where applicable the addition of suffix letters P or S denotes port or starboard. Where more than one panel gives access to similar equipment at different positions along one side of

the aircraft, e.g. flying control tube joints, an additional suffix letter gives them separate identities. Table 3 lists the panels through which the components of various systems are accessible; less comprehensive information of this nature is also available on panels attached to the nose-wheel port beam and the inner face of access panel 77P.

3. Removable panels in the cockpit are

shown in fig.8 and are numbered only in the illustration to abbreviate references to these panels in the servicing instructions.

Jacking and trestling (fig.3)

CAUTION

Unless suitable ballast has been fitted, the tail trestle must remain in position after the removal of equipment from the aircraft until it has been established that the centre of gravity movement has not caused the aircraft to become tail heavy.

4. For normal servicing the aircraft is jacked at three positions. The main-plane jacking positions are marked on the main-plane lower surface aft of the main-undercarriage bays; the nose jacking-position is located behind two detachable circular panels forward of the nose-undercarriage bay. A tail trestle must be positioned at frame 59 when the aircraft is on jacks. To raise the aircraft on jacks:-

(1) Fit the jacking pads Ref.No.26DK/95004 at the main-plane jacking points and screw in the securing bolts until the jacking pad is held against the main-plane lower surface, do not fully tighten the securing bolts.

(2) Position a 10-ton hydraulic jack, comprising trestle Ref.No.4Q/2294, jack body Ref.No.4Q/1045835, and Mk.105 adapter head Ref.No.4Q/2661 at each main-plane jacking point. The adjustable legs of the jack trestle must be parallel with the aircraft lateral axis.

(3) Raise the jack rams evenly to take part of the aircraft weight then tighten the jacking-pad securing bolts using the tommy-bar provided.

(4) Remove the two small circular panels in the skin at the nose jacking point, and position a 5-ton jack, comprising trestle Ref.No.4Q/2261, jack body Ref.No.4Q/2232 and beam Ref.No.26DK/95005. Raise the jack ram to engage the beam with the jacking point.

(5) Operate the nose and main-plane jacks to raise the aircraft evenly until the wheels are clear of the ground. Lock the collars on the jack rams and legs of the trestle.

(6) Support the rear fuselage at frame 59 using the steady trestle Part No. EF3.88.2357.

Note...

If the aircraft is to be left in a complete condition no additional trestling is required.

Trestling, No.1 engine hatch removed

5. To trestle the aircraft with No.1 engine hatch removed:-

(1) Ensure that No.2 engine hatch is closed and fastened or the jury strut Ref.No.26DK/95873 is fitted prior to the removal of No.1 engine hatch.

(2) Jack and trestle the aircraft (para.4) and ensure that the steady trestle at frame 59 is taking no weight.

(3) If No.1 engine is not fitted, position a trestle assembly comprising, trestle Ref.No.4G/7 and engine trunnion beam assembly Ref.No.26DK/95287 beneath No.1 engine trunnion housings. Remove the pip-pins and slide the shaft assemblies inboard and refit the inboard pip-pins, extend the screwjacks until the shaft assemblies align with the No.1 engine trunnion housings. Remove the inboard pip-pins and slide the shaft assemblies outboard into the engine trunnion housings, adjust the screwjacks until the pip-pins can be refitted; ensure that each shaft is engaged into the engine trunnion housing an equal amount, adjusting the trestle position as required. Extend the screwjacks until the assembly supports the fuselage.

(4) If No.1 engine is fitted, position a universal jacking trestle No.3 and former Ref.No.26DK/95616 at frame 44 and extend the screwjacks evenly until the former supports the fuselage.

(5) Adjust the position of the steady trestle at frame 59 as required, the beam of the trestle in contact with the aircraft but taking no weight.

Note...

If the trestles are to be removed and the aircraft lowered to the ground, the No.2 engine-bay jury strut must not be removed prior to the fitment of No.1 engine hatch. If it is required to ground run No.2 engine with the engine hatch removed, the jury strut c/w slave igniters must be fitted.

Jacking for wheel changing (fig. 3)

6. Complete jacking and trestling is not necessary to remove any one wheel:-

(1) For nose-wheel changing the equipment comprises 8-ton jack Ref.No. 4Q/1309 fitted with adapter head Mk. 104 Ref.No. 4Q/2663, and the nose-undercarriage jacking bracket Ref.No. 26DK/95006.

(2) For main-wheel changing the 8-ton jack, adapter head Mk. 104 and main-undercarriage jacking bracket Ref.No. 26DK/95695 are used. Before jacking it is essential to ensure that the pad of the main-undercarriage jacking bracket is square to, and in contact with, the undercarriage leg.

Note...

When jacking the aircraft at one position only, chocks must be fitted at the appropriate wheels and the parking brake applied.

Auxiliary jacking positions

7. The main-plane slinging points, located on the main-plane lower surface forward of the main-undercarriage bays, can be adapted for use as auxiliary jacking positions using auxiliary jacking

adapters Ref.No. 26DK/95110. These positions must only be used during salvaging (Chap. 1) or hydrostatic weighing (Chap. 3B) operations with the main undercarriage retracted.

Airframe symmetry checks (fig. 4)

8. Although rigging adjustments are not possible, the symmetry of the aircraft can be checked by measuring between rigging points marked on the skin. The position of the rigging points, and the dimensions between them, are indicated in the illustration. After assembly of a fin to the fuselage, the fin-to-main plane dimensions must be equal, i.e. any difference from the nominal dimension, within the tolerance permitted, must be common to both port and starboard measurements.

Aircraft leveling and main-plane rigging checks (fig. 5)

9. The equipment required and method of application are given in the illustration. For the incidence and anhedral figures refer to Leading Particulars.

◀ Drainage holes, channels and cutaways (fig. 9-21)**10.**

(1) The drainage holes and vents

throughout the airframe must be kept free from obstruction.

(2) There are four main areas where leakages, or accumulations of fuels and oils are a potential fire hazard, and it is essential that their associated drainage systems are kept clear from obstruction. Illustrations have been provided which will enable servicing personnel to readily follow and maintain these systems, and to assist in the tracing of possible locations of blockages and/or leaks. ▶

Note...

The fuel tank water drains embody fuel sampling valves for which a special-to-type tool Ref.No. 26DK/95234 is required, refer to Sect. 4, Chap. 2 for servicing information.

Walkways and guards (fig. 6)

11. Walkways and guards are provisioned as ground equipment for the protection of airframe components during servicing operations.

Blanks

12. The engine air-intake and jet-pipe nozzles may be blanked off using the equipment listed in Table 1. For the method of fitting refer to fig. 7.



TABLE 1
Special ground equipment

REF.NO.	PART NO.	DESCRIPTION	APPLICATION/REMARKS
Engine and E.C.U. equipment			
◀ 26DK/95008	EB2.88.63	Trolley, installation, No.1 engine	Use with 26DK/95008 No.1 engine removal. Use with 4GC/5752 (Table 2)
26DK/95792	EF3.88.1777	Cradle, hoisting, No.1 engine	
26DK/95010	EB2.88.77	Beam, supporting, hoist, rear	
26DK/95011	EB2.88.79	Beam, supporting, hoist, front	
Jacking equipment			
26DK/95004	EB2.88.407	Pads, jacking, main plane	Main plane jacking. Use with items from A.M.S.E.C. scale 1157 (Table 2) Nose jacking. Use with items from A.M.S.E.C. scale 1159 (Table 2) For nose and main wheel changing use with items from A.M.S.E.C. scale 1156 (Table 2)
26DK/95005	EB2.88.509	Beam, jacking, nose, c/w adapter head	
26DK/95006	EB2.88.435	Bracket, jacking	
26DK/95695	EF3.88.575	Bracket, jacking (pre Mod.8041)	
26DK/1503984	EF3.88.2627	Bracket, jacking (post Mod.8041)	
Rigging equipment			
26DK/95099	EB2.88.2185	Gauge, leveling, longitudinal	Rear fuselage
26DK/95087	EB1.88.99	Pins, rigging	Set of three
26DK/95100	EB2.88.2187	Gauge, leveling, lateral	Front fuselage
26DK/95029	EB2.88.3279	Gauge, incidence, main plane	
26DK/95300	EB2.88.5101	Box, storage	For 26DK/95029
26DK/95189	EB2.88.3549	Container, leveling gauge and rigging pins	Aileron travel checks
26DK/95074	EB1.88.2339	Gauge, port	
26DK/95164	EB1.88.2340	Gauge, starboard	
26DK/95273	EB2.88.4779	Gauge, incidence, tail plane, port	
26DK/95274	EB2.88.4780	Gauge, incidence, tail plane, stbd.	Complete with pointers
26DK/95286	EB2.88.5649	Gauge, rudder travel checks	
26DK/95414	EB2.88.6065	Pin, rigging, lateral level, port	
26DK/95415	EB2.88.6066	Pin, rigging, lateral level, starboard	
26DK/95468	EB2.88.6159	Rig, setting, autostabilizer, port	
26DK/95469	EB2.88.6160	Rig, setting, autostabilizer, starboard	
26DK/95503	EB2.88.7013	Rig, setting, control column and rudder bar	
26DK/1484340	EF3.88.2539	Pins, rigging, assembly	Tail plane torque converter
26DK/1504623	EF3.88.1821	Unit, test, rudder feel	
Slings equipment			
26DK/95262	EB4.88.19	Sling, fuselage, nose section	Supersedes 26DK/95020 at wastage rates
26DK/95020	EB2.88.685	Sling, fuselage, nose	
26DK/95021	EB2.88.289	Sling, fuselage, rear	
26DK/95022	EB1.88.41	Sling, fin or rudder	
26DK/95102	EB2.88.3249	Sling, tail plane	
26DK/95263	EB2.88.5941	Sling, canopy	

continued...

TABLE 1 Special ground equipment - continued

REF.NO.	PART NO.	DESCRIPTION	APPLICATION/REMARKS
		Draining and filling equipment	
◀ 26DK/95039	AVA.550B	Adapter	Replenishing hydraulic fluid reservoir
26DK/95191	J.E.P.I.	Dispenser, hydraulic fluid	
26DK/95038	EB1.88.49E	Connector, drain and overflow	Air turbine, gearbox
26DK/95144	EB2.88.2563	Pipe, overflow, hydraulic system	F Mk.1 only
26DK/95368	EB2.88.4943	Pipe, overflow, hydraulic system	F Mk.1A only
26DK/95299	EB2.88.3261	Drain, starter exhaust	
26DK/95862	EF3.88.1219	Drain, overflow	Hydraulic system
26DK/95220	EB2.88.3407	Adapter, nose-wheel shimmy damper	Accumulator charging
26DE/95162	80450.P.1	Rigs, pressure, oil replenishing	Charging main u/c shock absorbers and rocket pack hydraulics
26DK/95327	AVX.280B/1	Coupling, water/glycol replenishing	Use with 4G/5378 (Table 2)
26DK/95817	AVA.1486D	Coupling, water/glycol replenishing	Use with 4G/5378 (Table 2)
26DK/95161	EB2.88.2881	Attachment, drain	Engine starter fuel tank
		Covers, blanks and guards	
27D/3217		Cover, cockpit	
27D/3092		Cover, nose wheel	
27D/3218		Cover, engine intake	
27D/3220		Cover, generator cooling duct	
27D/3221		Cover, inward vent pipe, port	
27D/3222		Cover, inward vent pipe, starboard	
27D/3091		Cover, main wheels	
26DK/95330	EB2.88.5895	Cover, personal equipment connector	
26DK/95422	EB2.88.6197	Cover, P.A.S. controller, 109-way socket	
26DK/95303	EB2.88.6051	Shield, protection	Windscreen and side panels
26DK/95012	EB2.88.173	Guard, debris, intake	For engine ground running
26DK/95194	EB2.88.3979	Guard, jet pipe seal	Frame 53
26DK/95195	EB2.88.3977	Guard, jet pipe seal	Frame 44
26DK/95293	EB2.88.4401	Guard, debris, engine entry	
26DK/95314	EB2.88.5139	Guard, auxiliary air intake	
26DK/95351	EB2.88.5975	Blanks, engine (set of 6)	Use when servicing starter
26DK/95129	EB2.88.2133	Guard, canopy seal, port	} Protection of seal when canopy is open
26DK/95130	EB2.88.2135	Guard, canopy seal, starboard	
26DK/95246	EB2.88.3117	Pennant, warning	} Tail plane
26DK/95247	EB2.88.3119	Pennant, warning	
26DK/95056	EB2.88.961	Blank, airframe, air intake	} Main plane
26DK/95343	EB2.88.5511	Guard, release handle	
27D/3242	EB3.88.81	Cover, spine (Mod.8001)	For ventral tank and Firestreak missile jettison
27D/3224		Cover, pitot head	
27D/3219		Cover, jet pipe	
26DK/95785	EB3.88.85	Cover, aerial (Mod.8004)	I.F.F. and Tacan aerials
		Servicing equipment	
26DK/95108	EB2.88.3671	Eyebolt	} Hoisting u/c leg
26DK/95111	EB2.88.3655	Ring, lifting	

continued...

TABLE 1 Special ground equipment - continued

REF. NO.	PART NO.	DESCRIPTION	APPLICATION /REMARKS
Servicing equipment - continued			
◀ 26DK/95697	EF3.88.581	Pin, locking	Jet pipe access doors
26DK/95291	EB2.88.4511	Lock, safety, canopy jack	
26DK/95292	EB2.88.4523	Platform, cover, cables	Used during pilot's seat removal
26DK/95228	EB2.88.5921	Connector, pressure gauge	For canopy seal test
26DK/95223	EB2.88.4355	Frame, supporting, cable	} Ground electrics 'drag-off' equipment
26DK/95222	EB2.88.4357	Cable, anchor and clamp	
26DK/95304	EB2.88.5607	Adapter, nitrogen charging	
26DK/95369	EB2.88.5853	Adapter, canopy seal inflation	
26DK/95331	EB2.88.4467	Rig, test, canopy jettison mechanism	
26DK/95055	EB2.88.3943	Walkway fuselage	Rear end
26DK/95192	EB2.88.2363	Walkway, No.2 engine bay	When engine is removed
26DK/95208	EB2.88.3981	Walkway, No.2 jet pipe region	When jet pipes are removed
26DK/95112	EB2.88.1753	Walkway, No.2 engine hatch	With engine installed
26DK/95401	EB2.88.6187	Adapter, gauge	Cabin pressure test
26DK/95423	AE.7729	Rig, test, motor alternator, mobile	
26DK/95796	EB3.88.199	Ladders, cockpit-access	
26DK/95380	A/53/20	Platform, cockpit-access	
26DK/95032	EB1.88.2171	Lock, ground, main u/c	
26DK/95033	EB2.88.4061	Lock, ground, nose u/c	
26DK/95576	EB3.88.109	Gear, tail restraint	
26DK/96781	EF3.88.1191	Rig setting	Hydraulic pump connections
26DK/95840	EF3.88.2017	Blank, test	Radar head exhaust
26DK/95873	EB3.88.177	Strut, jury, with slave ignition platform (Mod.8029)	(Special Order Only)
Picketing equipment			
26DK/95040	EB2.88.5643	Shackle, picketing, nose	} Available if required
26DK/95041	EB2.88.2471	Shackle, picketing, main plane	
26DK/95042	EB2.88.3745	Eyebolt, picketing, tail	
26DK/95402	EB2.88.5977	Chocks, restraint assembly	
Salvage equipment			
26DK/95110	EB2.88.2481	Pads, main plane	Auxiliary jacking point
26DK/95139	EB2.88.2479	Pads, jacking nose	
26DK/95140	EB2.88.2261	Bolts, slinging	Main-plane pick-up point
26DK/1503965	EF3.88.2537	Sling, complete aircraft	} Rear fuselage
26DK/95442	41G/SAL/314/1	Frame, support, forward, port	
26DK/95443	41G/SAL/314/2	Frame, support, forward, stbd.	
26DK/95444	41G/SAL/317	Frame, support, rear	
26DK/95445	41G/SAL/318	Adapter, tail-plane hinge	
26DK/95446	41G/SAL/319	Beam, transportation	
26DK/95447	41G/SAL/320	Trunnion bearing, root end	} Main plane
26DK/95448	41G/SAL/321	Frame, support	
26DK/95449	41G/SAL/322/1	Beam, root end, port	
26DK/95450	41G/SAL/322/2	Beam, root end, stbd.	
26DK/95451	41G/SAL/323	Plate, support, rear	} Front fuselage
26DK/95452	41G/SAL/324	Frame, support, rear	

continued...

TABLE 1 Special ground equipment - continued

REF.NO.	PART NO.	DESCRIPTION	APPLICATION/REMARKS
Salvage equipment - continued			
◀ 26DK/95453	41G/SAL/325	Beam, transportation, Frame 1	} Front fuselage
26DK/95454	41G/SAL/326	Beam, transportation, Frames 12 and 13	
26DK/95715	EF3.88.1493	Sling, aircraft nose	
26DK/95831	37238	Shackle, plate	
Armament and guided weapons equipment			
26DK/95098	EB2.88.1873	Gauge, alignment, radar head and guns	Use with 7R/754
26DK/95294	EB2.88.4557	Box, stowage, radar head alignment gauge	
26DK/95043	EB2.88.567	Derrick, armament lifting	
26DK/95047	EB2.88.563	Pallet, lower ammunition box	
26DK/95046	EB2.88.561	Pallet, gun/g.w./rocket pack	
26DK/95615	EF3.88.829	Pallet, universal	Supersedes item 26DK/95046 (Special Order Only)
26DK/95185	EB2.88.1773	Trolley base	For 26DK/95046/7
26DK/95188		Stand, armament servicing	
26DK/95214	EB2.88.3621	Plug, sealing	G.W. pack air-intake
26DK/1504003	EF3.88.1681	Beam, spreader	G.W. hoisting
26DK/1504020	EB3.88.281	Hook, attachment	
26DK/95217	EB2.88.3187	Protector, pylon	G.W. pack
26DK/95218	EB2.88.3189	Cover, G.W. pack	
26DK/95271	EB2.88.4219	Trolley, rocket launching unit	
26DK/95851	EF3.88.2161	Safelock, rocket pack	
26DK/95313	EB2.88.4559	Plug, safety, Firestreak	
26DK/95370	EB2.88.5695	Bag, stowage	For 26DK/95218
26DK/95371	EB2.88.5025	Beam, hoisting, gun pack	
7R/754		Instrument, gun alignment	Also for rigging radar head
7R/786		Projector, alignment harmonizing, c/w ultra-violet lamp	
7R/787	8.750.674	Slide, general harmonizing	} Use with item 7R/786
7R/796	8.750.710	Spider, projector mounting	
7R/803	AC0.29360	Spider, projector mounting	
26DK/95419	EB2.88.6143	Fitting, plumb-bob	
26DK/95830	EF3.88.1849	Clamp, missile (pre Mod.8030)	To provide alignment of item 7R/786
26DK/95903	EF3.88.2399	Clamp, missile (post Mod.8030)	Use with item 26DK/1504003
Special tools			
Tail unit			
26DK/95063	EB2.88.2993	Key, spline	} Tail-plane operating mechanism
26DK/95149	EB2.88.2033	Spanner, box, outer race, inner bearing	
26DK/95061	EB2.88.1871	Spanner, outer race, outer bearing (initial torque loading)	} Tail-plane removal and assembly
26DK/95150	EB2.88.2031	Spanner, box, (operating lever to tail- plane stub)	
26DK/95169	EB2.88.2359	Spanner, special, consisting of:-	
26DK/95170	EB2.88.2361	(a) C-spanner; peg	
26DK/95062	EB1.88.2161	(b) Spanner, half ring, peg Tool withdrawal	

continued...

TABLE 1 Special ground equipment - continued

REF.NO.	PART NO.	DESCRIPTION	APPLICATION/REMARKS
◀ Tail unit - continued		Special tools - continued	
26DK/95152	EB2.88.2857	Union, special	Recharging rudder damper unit
26DK/95786	EF2.88.341	Gauge, check	Rudder damper unit (supersedes 26DK/95239)
26DK/95172	EB1.88.2321	Extractor, tapered bush	Rudder to pintle
26DK/95178	EB2.88.3561	Tool, installation	Tail plane
26DK/95315	EB2.88.4929	Case	Rudder damper check gauge and adapter
26DK/95375	EB2.88.6041	Block, rig assembly, tail plane	
26DK/95374	EB2.88.6047	Rig socket bearing assembly	
26DK/95421	EB2.88.6131	Tool, assembly	Tail-plane spigot seal
	EF3.88.2551	Spanner	Fin attachment bolts
Fuselage			
26DK/95280	EB2.88.4377	Spanner, control rods	Forward of pressure bulkhead
26DK/95118	EB1.88.47	Key, locking	Parachute compartment doors
26DK/95088	EB1.88.951	Extractor, special pin	Wing, aircraft and undercarriage slinging
26DK/95096	EB1.88.943	Screwdriver, special	For plunge-milled slot screws
26DK/95335	EB2.88.5787	Screwdriver, special	2 B.A. plunge-milled slot screws
26DK/95336	EB2.88.5783	Screwdriver, special	3/8 in. and 7/16 in. plunge-milled slot screws
26DK/95333	EB2.88.5579	Spanner	
26DK/95334	EB2.88.5581	Spanner	For de-icing pipe nuts
26DK/95181	EB2.88.3769	Bar, tommy	Canopy air-drier
26DK/95249	EB2.88.4359	Spanner	Fire extinguisher cylinder union unit
26DK/95282	EB2.88.4483	Extractor	Air-brake jack, fuselage attachment pin
26DK/95338	EB2.88.5907	Screwdriver, special	Air intake duct fairing
26DK/95438	EB2.88.6507	Spanner, special A123 plugs	
26DK/95373	EB2.88.5997	Spanner, control column	
26DK/95406	EB2.88.6019	Gauge, canopy override	
26DK/95407	EB2.88.6073	Spanner, C-	Pitot probe special nut
26DK/95405	EB2.88.6079	Extractor	Flying control rod bolts
Rigging			
26DK/95457	CHA 91783	Pin, rigging, consisting of:-	
	CH 91774	Bar, locking	
	CH 91779	Ring	Throttle box
26DK/95127	EB1.88.1093	Pin, locating	Controls rigging
26DK/95131	EB2.88.4001	Pins, setting	Air-brake synchronization
26DK/95134	CH 109215	Pins, setting	Autostabilizer setting
26DK/95232	EB2.88.4007	Box, container, setting pins:-	
	EB2.88.4009	Pin, setting, main undercarriage	
	EB2.88.4011	Pin, setting, undercarriage door	Equipment for setting alighting-gear jack override
	EB2.88.4013	Pin, setting, nose undercarriage	
26DA/95232	G.A5.88.1875	Indicator, stick force	Use with item 1H/118 (Table 2)
Alighting gear			
26DK/95078	EB1.88.13	Tool, extractor	Main u/c pivot pin
26DK/95079	EB2.88.1209	Tool, extractor	Nose u/c pivot pin
26DK/95080	EB2.88.977	Spanner, peg, u/c pivot pin	Main u/c assembly
26DK/95081	A.10262	Extractor - main wheel	
26DK/95082	M.T.1381	Spanner, peg, main wheel retaining nut	Main wheel changing

continued...

TABLE 1 Special ground equipment - continued

REF.NO.	PART NO.	DESCRIPTION	APPLICATION/REMARKS
Special tools - continued			
Lighting gear - continued			
26DK/95116	EB2.88.1867	Thread guard, nose u/c pivot pin	Nose u/c assembly
26DK/95117	EB2.88.1865	Spanner, peg, nose u/c pivot pin	Nose u/c removal and assembly
26DK/95240	M.T.1435	Tool, adjusting	Nose u/c down-lock
26DK/95283	EB2.88.4493	Tool, setting	Main u/c door-lock mechanism Use with item 26DK/95285
26DK/95284	EB2.88.4495	Tool, setting	
26DK/95285	EB2.88.4507	Pin, setting	
Engine and E.C.U.			
26DK/95397	EB2.88.5801	Spanner, engine trunnion mounting	Engine change
26DK/95094	EB2.88.741	Spanner, box, trunnion bolt assembly	
26DK/95095	EB2.88.3737	Spanner, box, trunnion cone assembly	
26DK/95241	EB2.88.4169	Key, air-intake sealing ring	Removal and assembly of starter access panel
26DK/95242	EB2.88.4171	Key, jet pipe roller adjustment	Removal and assembly of jet pipes
26DK/95089	EB2.88.21	Tool, retractor, reheat pipe cooling duct	
26DK/95163	EB2.88.2555	Spanner, T	
26DK/95297	EB2.88.4915	Extractor, engine trunnion	Engine change
26DK/95420	EB2.88.6163	Spanner, plug	No.2 engine ignition leads
26DK/95425	A.1677	Spanner, ratchet, engine hatch bolts	Use with 1L/156 (Table 2)
26DK/95364	EB2.88.4347	Key	Use with 26DK/95084
26DK/95084	EB2.88.2719	Spanner, brace	Engine hatch side bolts
Air system			
26DK/95248	EB2.88.4345	Spanner	Air system No.1 engine N.R.V. (pre Mod.96)
26DK/95158	EB2.88.2265	C-spanner, special	Air system No.1 engine N.R.V.
26DK/95279	EB2.88.4375	Spanner	Air system No.2 engine N.R.V. } (pre Mod.96)
26DK/95278	EB2.88.4373	Key	Air system No.2 engine N.R.V. }
26DK/95403	EB2.88.6017	Spanner, auxiliary air connection	Port side No.1 engine
Fuel system			
26DK/95071	EB2.88.735	Tool, spring retaining	Ventral tank installation
26DK/95234	EB2.88.4185	Tool, fuel sampling	Fuel contents gauges Fuel booster pump removal Emergency refuelling caps
26DK/95337	EB2.88.5963	Screwdriver, trimming	
26DK/95183	EB2.88.3693	Handle	
26DK/95233	EB2.88.4311	Key	
Main planes			
26DK/95114	EB2.88.2009	Spanner, C-	"In situ" removal of aileron P.F.C.U. tail-piece Wing to fuselage upper attachment bolts at spar 5 Wing to fuselage rear attachment bolts Wing to fuselage forward attachment bolts U/C fairing flap actuating link
26DK/95235	EB2.88.4035	Spanner, special	
26DK/95250	EB2.88.4147	Bullet, lead in	
26DK/95818	EB3.88.197	Bullet, lead in	
26DK/95311	EB2.88.5401	Nipple, grease	
Hydraulics			
26DK/95171	EB2.88.3547	Spanner, box	Micronic filters
26DK/95072	EB1.88.2055	Spanner, reservoirs, hydraulic	Outer sleeve tensioning
26DK/95175	EB2.88.2997	Spanner, special	Hydraulic reservoir For 5/8 in. dia Avery couplings
26DK/95176	EB2.88.2987	Spanner, socket special	
26DK/95177	EB2.88.2975	Cradle, clamping	
26DK/95340	EB2.88.5795	Spanner, hydraulic unions	

continued...

RESTRICTED

TABLE 1 Special ground equipment - continued

REF. NO.	PART NO.	DESCRIPTION	APPLICATION/REMARKS
Special tools - continued			
Hydraulics - continued			
26DK/95341	EB2.88.5797	Spanner, hydraulic unions	For 1/2 in. dia Avery couplings
26DK/95342	EB2.88.5799	Spanner, hydraulic unions	For 3/8 in. dia Avery couplings
26DK/95769	EB2.88.6423	Tool and cover	Withdrawing Tecalmit pressure filter
26DK/95814	EB3.88.159	Spanner, banjo bolt	} Auxiliary hydraulic reservoir
26DK/95816	EB3.88.163	Spanner, peg slot nut	
26DK/95815	EB3.88.161	Wrench, peg spanner	} Recharging rudder damper unit
26DK/95152	EB2.88.2857	Union, special	
26DK/95786	EF2.88.341	Gauge, check	Rudder damper unit (supersedes 26DK/95239)
26DK/95575	ST11/10080	Spanner, key	Auxiliary hydraulic reservoir
26DK/95316	EB2.88.4911	Spanner, special	Sequence valve
27BM/4578	MT.1295	Spanner	Protection unit
Armament			
26DK/95123	EB2.88.4095	Brace, gun hoists	} Gun, amunition container, and armament pack installation
26DK/95084	EB2.88.2719	Spanner, brace	
26DK/95364	EB2.88.4347	Key	Armament pack attachment bolts
26DK/95173	EB2.88.3195	Spanner, gun harmonizing	Horizontal
26DK/95174	EB2.88.3197	Spanner, gun harmonizing	Vertical
26DK/95128	EB2.88.1523	Handle, lifting	Ammunition box handling
26DK/95277	EB2.88.3677	Scissors, safety lock	Ejection seat drogue gun
26DK/95440	EB2.88.6409	Spanner, upper blast tube	} Upper blast tube sealing rings
26DK/95441	EB2.88.6411	Spanner, lower blast tube	
26DK/95439	EB2.88.6505	Strap, retaining	
26DK/95186	EB2.88.3665	Spanner, gun-purging assembly	
Miscellaneous			
26DK/95251	EB2.88.4371	Extractor	Radar head
26DK/95539	CH.121084	Gauge, pilot's input lever	
26DK/95788	EB3.88.175	Tool, starter pump setting	
26DK/95526	-	Pliers, circlip, internal Model A	} Maxigrip type
26DK/95527	-	Pliers, circlip, internal Model B	
26DK/95528	-	Pliers, circlip, internal Model D	
26DK/95529	-	Pliers, circlip, external, No.1	
26DK/95530	-	Pliers, circlip, right-angled, No.2	
27KC/2778	CHA.105732	Adapter, 'C' type (used with Acrotork wrench)	Tail plane P.F.C.160
27KC/2779	CHA.107621	Adapter assembly, torque	Aileron
27KC/2780	CHA.107623	Adapter assembly, torque	Aileron
27KC/2753	CHA.107625	Spanner assembly, torque	Rudder

TABLE 2
Standard ground equipment

SECT. & REF.NO.	ACCESSORY REF.NO.	DESCRIPTION	A.M.S.E.C. SCALE NO.	APPLICATION/REMARKS
		Engine and E.C.U. equipment		
4GC/4232188	4GC/4232223	Sling, engine, Avon, universal Mk.2 Plate, adapter, front pick-up	2071	Use with 4GC/4232188
40B/1214 or 1220	40B/1168	Stand, universal, Avon E.C.U.	1153	Alternatives
	40B/1148	Adapter set		
40B/1030	40B/1032	Bolt, trunnion		
	40B/1148	Stand, universal, Avon E.C.U. Adapter set		
4G/4858		Bolt, trunnion	No.2 engine change	
4L/2014		Trolley, E.C.U. servicing, Mk.2		
4G/5998		Block, pulley, geared, 30-cwt Transporter, Avon E.C.U.		
		Jacking equipment		
4Q/1045835	4Q/2294	Bodies, hydraulic, 10-ton	1157	Refer to A.P.2817A, Vol.1 Use with 26DK/95004 (Table 1) For wing jacking point
	4Q/2661	Trestle, Mk.1		
4Q/4230641	4Q/4230642	Adapter, head, Mk.105	1159	Nose jacking point use with 26DK/95005 from Table 1
	4Q/4230649	Bodies, hydraulic, 5-ton Trestle, Mk.1		
		Trolley, transporting		
4Q/1045836	4Q/2663	Jack, pillar, hydraulic, 8-ton Adapter, head, Mk.104	1156	Use with 26DK/95006 and 26DK/1503984 for nose and main wheel changing, and charging U/C shock absorber
4Q/2035240		Wheels, transportation, comprising:-	1210	Refer to A.P.2817A, Vol.1 For transporting 4Q/1045835 and 4Q/2294
4Q/2035241		Unit, fixed leg (2 off) Unit, trailing leg (1 off)		
		Towing and steering equipment		
4GB/4409924		Arm, towing	1158	Refer to A.P.2817A, Vol.1, and Vol.6 Use with 26DK/95001 (Table 1)
4GB/4409986	4GB/4409998	Frame, extension Bridle, towing, 35-ft		
		Hoisting and handling equipment		
4GC/5425 or 4GC/4232219		Hoist, A/C heavy component, 250-lb	1519	For information on hoists and accessories refer to A.P.2817A, Vol.1 and Vol.6, Part 1, Sect.8
4GC/5703		Hoist, A/C heavy component, 2½-cwt		
4GC/5752		Hoist, A/C heavy component, 5-cwt		
		Hoist, A/C heavy component, 10-cwt		
	4GC/5426	Handle, winch, 9-in.		
	4GC/4732337	Handle, winch, 9-in.		
	4GC/5427	Extension tube, 24-in.		
	4GC/5443	Extension tube, 36-in.		
	4GC/5730	Extension tube, 48-in.		
	4GC/5444	Extension tube, 60-in.		
	4GC/6093	Extension tube, 12-in.		
	4GC/5976	Top sheath, 17-in.	Use with 4GC/5425, 4GC/4232219 and 4GC/5703	
	4GC/6099	Top sheath, ball, 1-1/16-in.		Use with 4GC/5703
	4GC/6100	Ball, cable end, 1-1/16 in.		

continued...

TABLE 2 Standard ground equipment - continued

SECT. & REF.NO.	ACCESSORY REF.NO.	DESCRIPTION	A.M.S.E.C. SCALE NO.	APPLICATION/REMARKS	
Hoisting and handling equipment - continued					
4GC/6648 or 7994	4GC/1046578	Top sheath, hook, 5-cwt	1519	Use with 4GC/5703 Use with 4GC/5425, 4GC/4232219 and 4GC/5703 Use with 4GC/4232219	
	4GC/1042863	Hook, cable winch			
	4GC/5433	Ball end, cable, winch			
	4GC/5701	Block, winch, double-purpose			
	4GC/6669	Hoist, servicing, multi-purpose, Mk.1 or Mk.2	1229	For removal and assembly of components refer to A.P.2817A, Vol.1, and Vol.6, Part 1, Sect.8, Chap.13, for selection of suitable accessory	
	4GC/6650	Platform, servicing			
	4GC/6672	Jib, No.1			
	4GC/4232290	Jib, No.2			
	4GC/6674	Jib, No.4			
	4GC/6986	Jib, No.5			
4F/3234	4GC/6987	Platform, cantilever	1211	For information refer to A.P.4494A	
	4GC/6988	Ladders, access			
	4F/2193	Brackets, ladder attachment Handlers, A/C mechanical Type B Mk.4 Adapter, universal			
Trestling equipment					
4GB/ 4GB/	4GB/1041916 4GB/1047378 4GB/4409916	Trestle, U.J.No.3, c/w Type A brackets	}	Use with 26DK/95026 and 26DK/95616 For trestling, rear fuselage. Use with item 26DK/95287 (Table 1)	
		Trestle, universal, No.7			
		Bar, clamping			
		Bracket, beam			
Servicing trolleys					
4F/4229212 4F/1041044	4F/1042289 4F/2191 4F/2459 4G/5809	Trolley, compressor air, Type L Mk.2A	1041	Refer to A.P.4350A	
		Trolley, testing, cabin pressure, Mk.1C	1289	Refer to A.P.2306G	
4F/1787 4F/1805 4F/1912 or 4F/4229319 4F/1840 or 4401 4F/2061 4FE/4226136 4FE/3761 or 4FE/4257 4FE/3786 or 4FE/4258 4F/2376 4F/3603	4F/4229500 4F/2299	Adapter, cabin air supply, 1½ ANG to 2 B.S.P.			1044D & G
		Gauge, pressure, 0-15 lb/in ²			
		Adapter, cabin pressure, manometer 3/8 U.N.F.	2017	1015	Refer to A.P.4552A
		Gauge, pressure, 0-10 lb/in ²			
		Trolleys, radar servicing, Type E	1147A	1103B	Refer to A.P.2306M
		Trolleys, servicing, pneumatic, L.P. Mk.1B	1018A		
		Trolleys, air cooling, Mk.2 or 2A	1232	1064A	Refer to A.P.2306M
		Trolleys, ground heating, non-toxic, Mk.3 or Mk.4			
		Trolleys, platform, A/C servicing G.P.	1078A	1078A	Refer to A.P.2306S
		Canopies, canvas			
Supports, canopy	1170B	1170B	Refer to A.P.2306B		
Trolleys, electrical, servicing, 10kVA, 115 volts, 2400 c/s					
Trolleys, electrical, servicing, 15kVA, 10kW I.C.E. driven	1064A	1064A	Refer to A.P.2306M		
Trolleys, electrical, servicing, 15kVA, 10kW electrically driven					
Trolleys, air supply, Mk.4	1078A	1078A	Refer to A.P.2306S		
Trolley, hydraulic servicing, Mk.3 c/w No.1, 2, 3 and 4 conversion kits	1170B	1170B	Refer to A.P.2306B		

continued...

TABLE 2 Standard ground equipment - continued

SECT. & REF.NO.	ACCESSORY REF.NO.	DESCRIPTION	A.M.S.E.C. SCALE NO.	APPLICATION/REMARKS
Servicing trolleys - continued				
4GD/4220		Trolleys, oxygen, charging, Mk.2	1203	Refer to A.P.2306U
4GD/6734		Trolleys, nitrogen-charging	1239	Refer to A.P.2306U
4G/4856		Trolleys, A/C defrosting plant	1236	Refer to A.P.4374B
4GD/4399275		Trolleys, H.P. air charging, Mk.2A	1215	Refer to A.P.2306U
4G/4858		Trolleys, E.C.U. servicing, Mk.2	1152	
Testing and servicing				
4G/3430		Sets, test, hydraulic	1021	Refer to A.P.1464G, Vol.1
4G/5420		Rig, test, linear actuator	1349	Refer to A.P.4343S
4G/6087		Rig, test, hydraulic component and alternator	857A	Refer to A.P.4747A
4G/6591		Rigs, test, rotary actuator	1429	
4F/4015		Adapter, air ventilated suit Mk.2	1572	
4G/6246		Adapter, inflation Mk.2		
	4G/3026	Gauges, pressure, 0-600 lb/in ²	1061	} For checking u/c pressures
	4G/3029	Gauges, pressure, 0-3500 lb/in ²		
4F/5809		Gauges, pressure, 0-10 lb/in ²	1289	} For canopy seal leakage test Use with 26DK/95228
4F/2191		Gauges, pressure, 0-15 lb/in ²		
4G/4864		Cans, fluid replenishing, pressurized Mk.1		} Oil replenishing
	4G/5644	Plates, identification, oil lubricating 0X-38		
	4G/5713	Hose, assembly	1163	
	4G/5719	Half coupling		
	4G/5371	Trolley, stowage		} Oil replenishing
4G/5358		Cans, fluid replenishing, pressurized, Mk.2		
4G/5378		Cans, fluid replenishing, pressurized 10-gal	1069	
4G/6621		Plates, identification, water glycol		
4G/1054066		Pumps, tyre inflating, Type B	1042	
	4G/1054065	Tubes, rubber, Type C 10-ft		
4G/5641		Ladder, giraffe, model AA Mk.2		
	4G/5708	Jib		
	4G/5709	Brackets, attachment (1 set)	1207	Radar head - removal and assembly
	4T/152	Arms, towing		
34E/2241107		Syringe, hypodermic	1204	Aviation fuel, water detection
34E/2241108		Head, water detector		
4G/11015		Mats, main plane, Type C		
4G/2051048		Cleaners, vacuum, 200-250-volts	1148K	Refer to A.P.4299A
4G/1047435		Pumps, pressurizing	1143K	
4GA/4409674		Cradles, transporting and stowage		} For transporting ADEN guns. Refer to A.P.1664D, Vol.1
	4GA/4409675	Wheels (1 set)		
	4GA/4409676	Handles, towing		
	4GA/4409677	Handles, lifting		
4G/5874		Gauges, tyre H.P.	1040D	Refer to A.P.1464G, Vol.1
4G/5970		Inflators, tyre H.P. Mk.1	1068A	
4G/6269		Separator, tyres, screw type	1271	Refer to A.P.2337, Vol.1
4GD/6541		Trolleys, fuel replenishing	1472	For ground equipment
4L/2589		Sling, single-leg	1974	} Refer to A.P.2817A, Vol.1 and Vol.6
4L/2552		Sling, four-legged	1975	

continued...

TABLE 2 Standard ground equipment - continued

SECT. & REF.NO.	ACCESSORY REF.NO.	DESCRIPTION	A.M.S.E.C. SCALE NO.	APPLICATION/REMARKS
		Testing and servicing - continued		
◀ 4GB/4409950		Chocks, a/c wooden, G.P. small	1166	
4GB/4409992		Chocks, a/c metal, collapsible, small	1167	Refer to A.P.1464G, Vol.1, Part 2
4GC/4232190		Sling	2071	Transit/serv. stand Avon E.C.U.
		Armament servicing		
7R/754	7R/755	Instrument, gun aligning	554A	Aden gun, 30 mm
		Case, stowage		
		Cocking assemblies, pneumatic, comprising:-		
7R/169		Valve, cocking,		
7R/474		Hose, high pressure		
7R/475		Hose, quick-release coupling		
		Instrument servicing		
6C/4360903		Barometer, precision, portable	1007A	Refer to A.P.1275T, Vol.1, Sect.3
6C/4360921		Sets, test	1011A	Variable capacitor, precision
6C/4360572		Sets, test	1088D	Pitot-static systems
6C/4360563		Sets, test	1058D	Checking exhaust gas thermocouples
6C/1051749		Tables, test, gyro instrument Mk.4A	1139A & B	Testing electrically-operated gyro instruments
6C/4361144		Sets, test Mk.2	1030D	Frequency response measurement
6C/1042139		Adapter box		
6C/4361162		Testers, pressure	1005A	Checking contents of emergency oxygen sets
6C/		Rigs, test	979A	Demand emergency oxygen equipment
6C/1106744		Flowmeter, oxygen, Rotameter, Type 124	1083B & D	
6C/1106740		Flowmeter, oxygen, Drallin		
6C/1106741		Flowmeter, oxygen, Drallin		
6C/4361167		Flowmeter, oxygen, Drallin		
6C/1106743		Flowmeter, oxygen, Drallin	1171	Refer to A.P.1275T, Vol.1, Sect.6
6C/4360918		Testers, oxygen flow		
6C/9542399		Compasses, prismatic	1178B	
		Cases, transit		
	6C/1196449	Tripods	701A	For servicing G90 cameras
	6C/9542398	Sets, test, cameras, aircraft G90 Mk.1		
14H/162		Units, sighting	798C	
14A/5054		Sets, generator, 5kVA 200-volts	947F	Refer to A.P.4343G, Vol.1
5P/4383367		Sets, alternator, 5kVA 115-volts	851G	Refer to A.P.4343G, Vol.1
5P/4383357		Meters, frequency, 300, 400 - 500 cycles	1108F	
5Q/100373		Rigs, travel setting, rotary actuators	598A	
5W/2667		Voltmeters, valve, Furzehill, Type V.200A	1008A	
10S/17730		Testers, valve, electronic	904A	
10S/9432419		Stroboscopes, portable	896C	Test apparatus for tachometers
6C/9549379		Chambers, vacuum Mk.6	1172A & C	Instrument testing, Refer to A.P.1275T, Vol.1
6C/4360494		Sets, test, Smith Waymouth, fuel contents gauges	1188B	Refer to A.P.112G-0753-1
6C/4360556		Calibrators, pressure gauge, Mk.3	838A	Testing up to 8000 lb/in ²
6C/1925549		Adapter, tachometer calibrator	562A	Use with 6C/4360572
6C/4360648		Pumps, vacuum, aneroid testing	748A	Checking instruments ranging up to 100,000 ft refer to A.P.1275T, Vol.1
6C/1075124				

continued...

TABLE 2 Standard ground equipment - continued

SECT. & REF. NO.	ACCESSORY REF. NO.	DESCRIPTION	A.M.S.E.C. SCALE NO.	APPLICATION/REMARKS
◀ 6C/4360717		Instrument servicing - continued Chambers, differential pressure, Mk.1A	761B	Testing low pressure and vacuum instruments, refer to A.P.112T-01524-1
6C/1829		Manometers, quick reference	994B & C	Refer to A.P.1275T, Vol.1, Sect.3
6C/4360861		Barometers, Casella	582A	Checking altimeters
6C/4360864		Adapter, plate, gyro test tables	984B & C	Refer to A.P.112T-0116-1
6C/4360865		Boxes, electrical, test		
6C/3084		Sets, test, Ferranti stand-by gyro systems	808A	For use with gyro instrument test tables
6C/4360901		Fixtures, test, pitch and roll		
6C/2147		Pressure transmitters	807A	Refer to A.P.1275T, Vol.1, Sect.3
	6C/4360876	Gauge adapter 1/8 in. B.S.P.		
	6C/4360877	Gauge adapter 5/8 in. B.S.P.		
	6C/2096	Gauge adapter 1/8 in. B.S.P.		
	6C/2139	Gauge adapter 1/8 in. B.S.P. (female)		
	6C/2140	Gauge adapter 1/8 in. B.S.P. (right-angled)		
	6C/2141	Case stowage		
	6C/4360900	Gauge adapter 3/8 in. B.S.P.		
		Electrical servicing		
5G/3204		Sets, test, Type QE.2230 J.P.T.C. systems	943B	Jet pipe systems. Refer to A.P.4343S, Vol.1
	5J.3464	Batteries, Type SKB 4.5 volts		
	5J.3465	Batteries, Type SKB 22.5 volts	992A	
5G/3188		Rigs, Sunstrand and test consoles		
5G/3365		Detectors, voltage, Mk.4	879B	For use on armament electrical circuits
	5G/3388	Leads, testing, Firestreak magpie motor		
	5G/3390	Leads, testing, ERU, No.4 Mk.1		
	5G/3392	Adapter, box	989A	Refer to A.P.4343S, Vol.1, Sect.24
	5G/3560	Case, carrying		
5G/3361		Banks, loading, mobile	1127B	Refer to A.P.4343S, Vol.1, Sect.3
5G/3651		Sets, test, I.P.N. turbo-starter		
5G/3691		Cable, test	1123D	
5G/1006388		Ohmmeters, safety, photo-electric, Mk.5		
5G/3733		Meters, time interval, Chronotron model 25C	1182C	
5G/565		Panels, loading, electrical, inductive	476A	
5G/560		Indicators, cocking, test, 7-way	1071K	For checking continuity of electrical circuit. Refer to A.P.4483A, Vol.1
	5J/9101806	Batteries, alkaline, 2.4 volt		
	5CY/591	Sockets, Type C, No.1, Mk.1	981A	Tinsley Type 4231/L.F.2
5G/2924		Testers, generator, mains-operated, Mk.5D		
5G/3217		Boxes, decade resistance	1096B	Refer to A.P.4343S, Vol.1, Sect.9
5G/3042		Equipment, servicing hydraulic alternator (electrical)		
5G/3187		Panels, test, alternator, Type BT.950	876	Refer to A.P.4306A, Vol.1, Sect.10
5G/3201		Units, lead, air-cooled, Type BT.962		
5A/1901-2		Blowers, air, portable, Type A	1074C	
or 5A/4124		Blowers, air, portable, Type D		
5A/4305		Nozzles	1121A	
5A/4345586		Floodlights, flameproof, floor type		
5A/4345596		Stands, electrical power distribution		

▶ continued...

TABLE 2 Standard ground equipment - continued

SECT. & REF. NO.	ACCESSORY REF. NO.	DESCRIPTION	A.M.S.E.C. SCALE NO.	APPLICATION/REMARKS
		Electrical servicing - continued		
◀ 5A/4345682		Lights, headband, flameproof	} 1097A	Refer to A.P.4306A, Sect.10
5A/4345687		Keys, special, dismantling		
5A/4682		Lamps, inspection, flameproof, Type J	1135K	
5A/4650		Floodlights, low voltage, fluorescent	1298	Refer to A.P.4343G, Vol.1
5A/1067377		Torches electric, Type V		
5A/4345668		Torches, electric, hand probe, illuminator	1120S	Refer to A.P.4343G, Vol.1
	PART NO.	Standard tools		
27KH/2753	CHA/107625	Assembly, torque adapter		Removal and replacement of rudder P.F.C.U.
27KF/2779	CHA/107621	Assembly, torque adapter		Removal and replacement of aileron P.F.C.U.
27KF/2780	CHA/107623	Assembly, torque adapter		Removal, replacement and bay servicing of aileron P.F.C.U.
1B/4572		Pliers, twicklip, 1/8 in.-5/32 in.	}	Removal and insertion of circlips
1B/4573		Pliers, twicklip, 3/16 in.-7/32 in.		
1B/4575		Pliers, twicklip, 9/32 in.-11/32 in.		
1B/4576		Pliers, twicklip, 3/8 in.-15/32 in.		
27Q/14103	ST/2034	Adapter		Use with items 26DK/95152 and 26DK/95239
37J/3432		Extractor, magnetic element		Hydraulic pumps
1L/1201252		Spanner, torque, 5-50 lb ft 1/2 in. S.D.		Use with item 26DK/95425 on engine hatch
1L/9106392		Socket, 7/16 in. W x 1/2 in. S.D.		Ventral tank
1L/373	AD.562	Socket, 9/16 in. W x 3/8 in. S.D.		A.C. and D.C. generator clamps
4A/2419		Kits, crack detection, Adrox		Jet pipe servicing
7R/753		Tool, barrel withdrawal		Aden guns
10AG/744		Tool, unwrapping	}	Use on No.4 Mk.1 E.R.U.
10AG/745		Tool, wrapping		
11A/5023		Tool, crutching		
11A/5011		Spanner, break cap		
1C/9106072		Wrenches, Allen key, 5/8 A.F.		
27BM/4904		Pin setting		Resetting of u/c selector buttons
27FR/2445	FRS.124	Spanner, C-, universal pipe connectors 1 in. to 3.25 in.		Fuel systems
27FR/4819		Connector, test, Mk.8, probe nozzle	}	Testing Mk.8 nozzle
27FR/30483	509-43	Fixture, checking		
27FR/30938	6805406	Spanner, box		
27FR/30937	6805404	Assembly, nose tool		
27FR/31527	509-63E	Fixture, checking		
27FR/31528	3304391	Assembly, test blank		
27FR/31529	3304397	Adapter, test		
27FR/32292	6805463	Tool, checking		
1C/1202793		Wrench, torque, 20-100 lb in. 3/8 in. S.D.		Use with item ST.11.10080 (Table 1)
	WB/608/6U.N.C.	Spanner, torque		Ward Brook terminal blocks. Post Mod.1921
1C/9105845		Screwdriver, fork, 1/2 in. x 3/16 in. gaps	}	Integrated flight instrument system
1L/9106393		Socket, 9/16 in. W x 1/2 in. S.D.		
1L/9106334		Handles, sliding bar T 1/2 in. S.D.		
1L/9106322		Bar, extension, 8 in. x 3/4 in. S.D.		
1L/9106323		Bar, extension, 9 in. x 3/4 in. S.D.		

continued...

TABLE 2 Standard ground equipment - continued

SECT. & REF.NO.	PART NO.	DESCRIPTION	A.M.S.E.C. SCALE NO.	APPLICATION/REMARKS
		Standard tools - continued		
◀ 1L/9106335		Handle, sliding bar, T in. S.D.	}	Wing to fuselage attachment bolts
1L/9106339		Handle, swivel, 3/4 in. S.D.		
1L/9106403		Socket, 1 in. Whitworth 3/4 in. S.D.		Suitable pennant to be manufactured locally Armament servicing Engine control torsion shaft Servicing hand pump on item 26DE/95162 (Table 1)
27VA/3303		Clamp, bleed, pressure relay		
27Y/2366		Spanner, hoop, Avery couplings		
27Y/3365		Spanner, hook		
27Y/8365		Spanner, peg		
1A/1275138		Balance, spring, 0-30 lb	862R	
1A/1275139		Balance, spring, 0-60 lb	965J	
1A/1043782		Balance, spring, 0-100 lb	883K	
1C/9105870		Screwdriver, spiral, automatic	898A	
1C/7068		Kits, tool, wire insert, No.1	803C	
1L/287		Spinner, ratchet, 7 1/2 in. x 9/32 in. S.D.	}	Hand tools for removing and refitting hexagon recessed screws
1L/1209782		Plug, hexagon, 3/32 in. A/F x 1/4 in. S.D.		
1L/1209784		Plug, hexagon, 5/32 in. A/F x 1/4 in. S.D.		
1L/1209785		Plug, hexagon, 3/16 in. A/F x 1/4 in. S.D.		
1L/292		Converters, 9/32 in. socket x 1/4 in. socket		
27F/4819		Connector, test, Mk.8 probe nozzle		
3A/2860		Riveters, Chobert, Type C Mk.2	511A	
3A/2861		Riveters, Chobert, Type B Mk.4	512A	
3A/3304 or 3A/1300399		Machines, cable crimping (Plessey type) Machines, cable crimping, hydraulic, portable (Erma type)	}	705A
6C/4360917		Tools, trimming		
				For Smith Waymouth and Type 1 fuel contents gauges

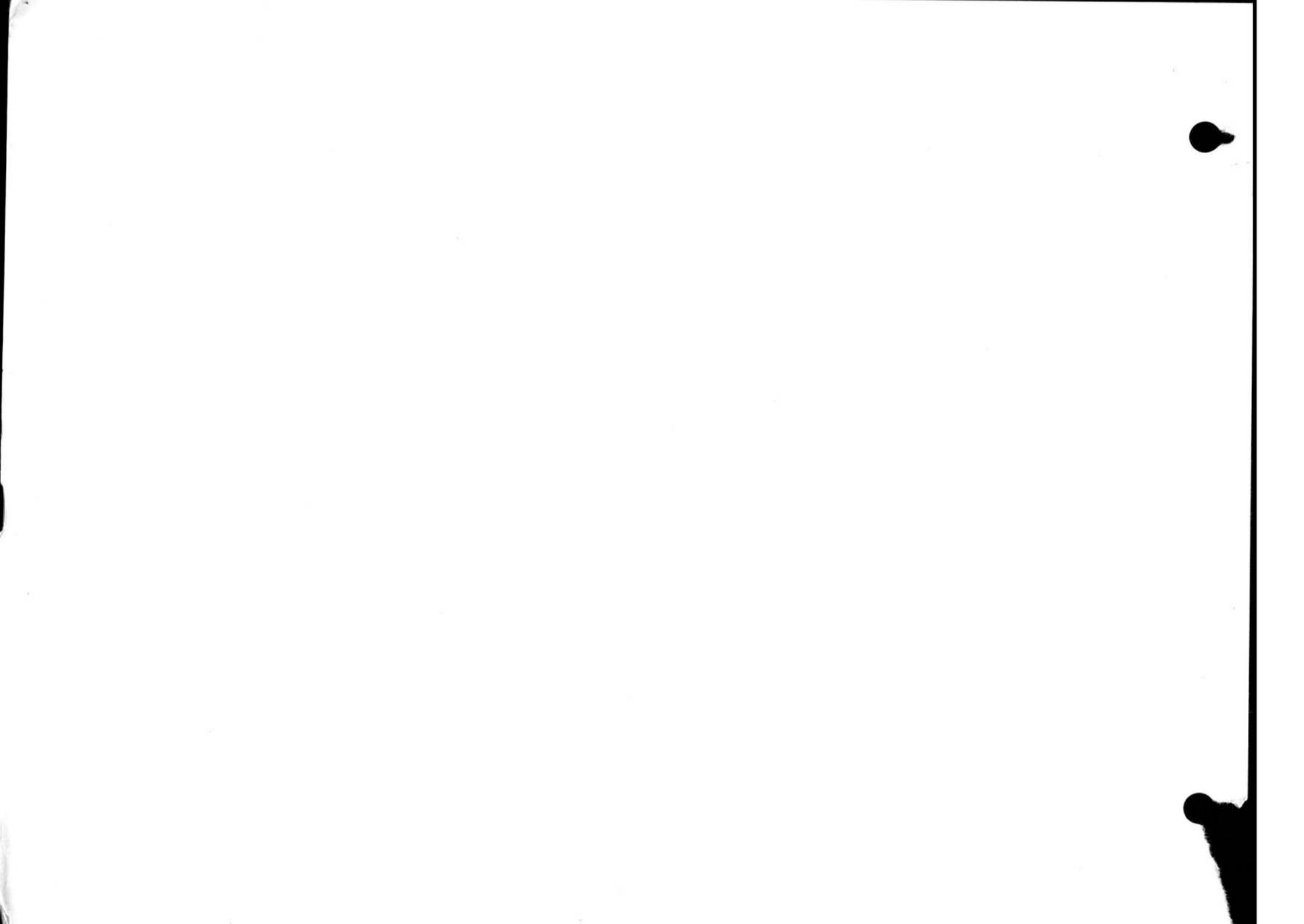


TABLE 3
Access to components (fig.1 and 2)

Note...
The letter H in the second column refers to the engine hatch.

COMPONENT	ACCESS PANEL NO.	COMPONENT	ACCESS PANEL NO.
Accessory drive unit		Alighting gear and braking equipment	
Gearbox oil filler	108P	Brake parachute jettison mechanism	91
Gearbox drain	81P	Nose undercarriage pivot pin	12P, 12S
Overspeed test switch	77P	Nose undercarriage up-lock	15
Air systems		Electrical equipment:-	
Auxiliary air system		Note...	
Pressure gauge connection (fuel tank pressure)	63P	<i>Certain items of electrical equipment are included under their associated system headings, they are therefore excluded from this list.</i>	
Ground test connection (fuel tank pressure)	63P	A.C. distribution box	29P
Pressure gauge connection (ventral tank pressure)	58S	A.C. fuse and relay box	31
Air supply tapping	45P	Air brake microswitches	111P, 111S
Rotol valve reset lever	73S	A.C. generator	77P
Cockpit air-conditioning and pressurization		A.C. generator control equipment	81P
Combined valve unit	3	Autopilot autostabilizer amplifiers	21S
Cold-air unit	26S	Autostabilizer amplifiers	
Ground pressurizing connection	26P	Ailerons	21P
Water system replenishing valve	27S	Rudder	87P
Water boiler	26S	Tail plane	87P
Air-drier	3	Battery isolating relay	29P
Non-return valve	3	Breakaway coupling	18S
Pressure reducing valve	3	D.C. feeder fusebox	30
Pressure relief valve	3	Emergency battery	21P
Filter	3	Emergency inverter (instrument supply)	22S
Test gauge connection cockpit pressurization	3	Emergency services fusebox	29P
A.V.S. ground connection N.R.V.	18S	Fuel contents gauge trimming cable box	114P, 114S
Anti-icing		D.C. generator	77P
Nose ring valves	55	D.C. generator control equipment	104S
Nose ring distribution box	33	Ground supply isolating relay	20P
Rain dispersal and armament services		J.B.7	113P
Moisture detection unit	5P	J.B.8	113S
Rain dispersal unit	8P	Magnetic amplifier (temperature control cockpit)	23
Canopy de-misting blower motor	30	Pressure switches (undercarriage and flaps)	4S
Gun-purging valve and pressure switch	21P, 21S	Rear navigation lights	106P, 106S
Armament		Relay box D2	87P
Ammunition tanks (upper guns)	21S	Main batteries	30P, 52PS
A.C. gun firing power unit	21S	Transformers	
Armament safety break	25P	No.1 instruments	21P
Ground extend/retract switch	25P	No.2 I.F.F.	29S
Ground arming link	25P	No.3 windscreen side panels	3
Stowage, safety break pennant	25P	No.5 pressure head and vent valve heaters	29P
Gun barrel sighting (upper guns)	11P, 11S	Windscreen temperature controller	3
Lower guns blast tubes	4P, 4S	300-A fuse and holder	29P
Link collector boxes	20P, 20S		
Spent cartridge collector boxes	131P, 131S		
Upper guns	21P, 21S		
Support structure	16P, 16S		

continued...

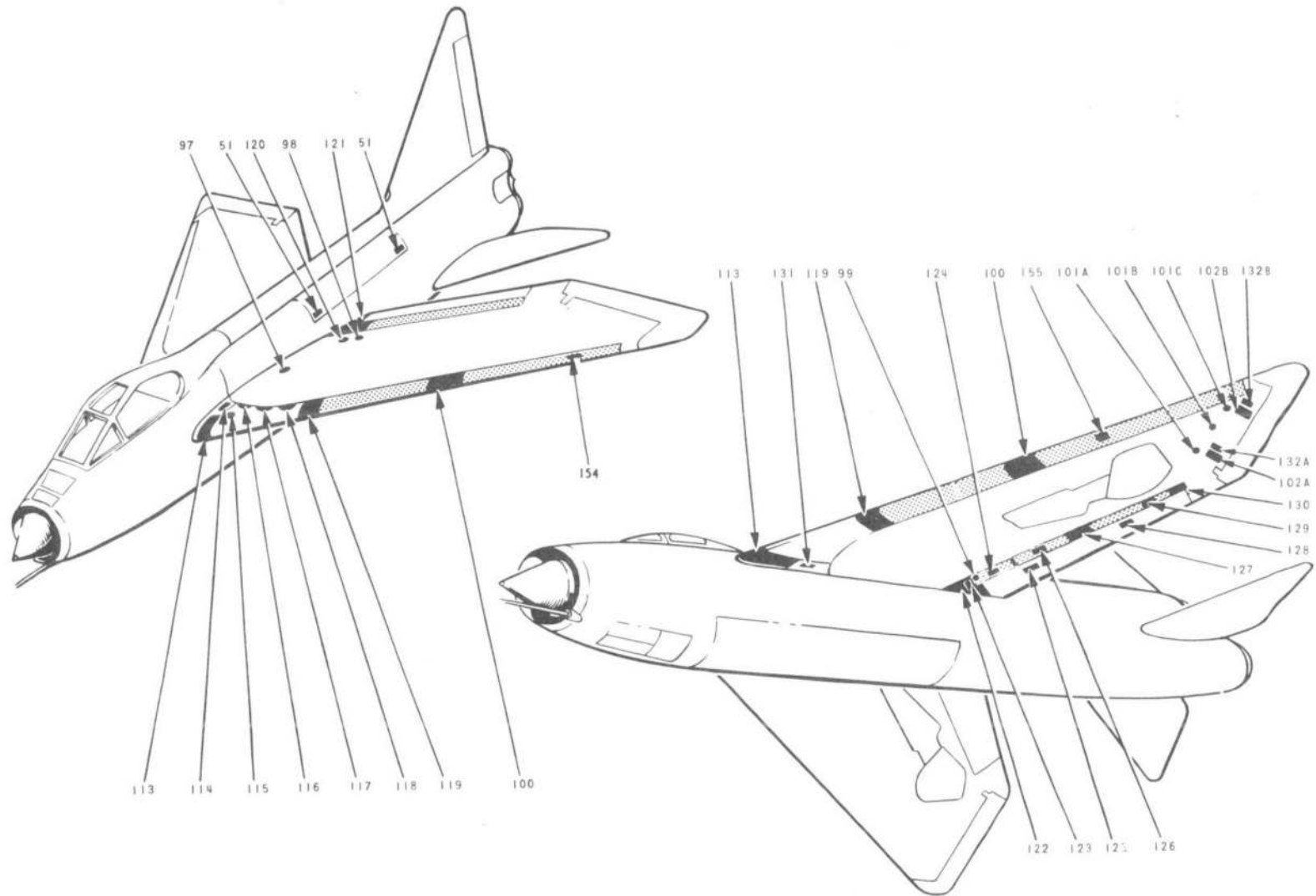
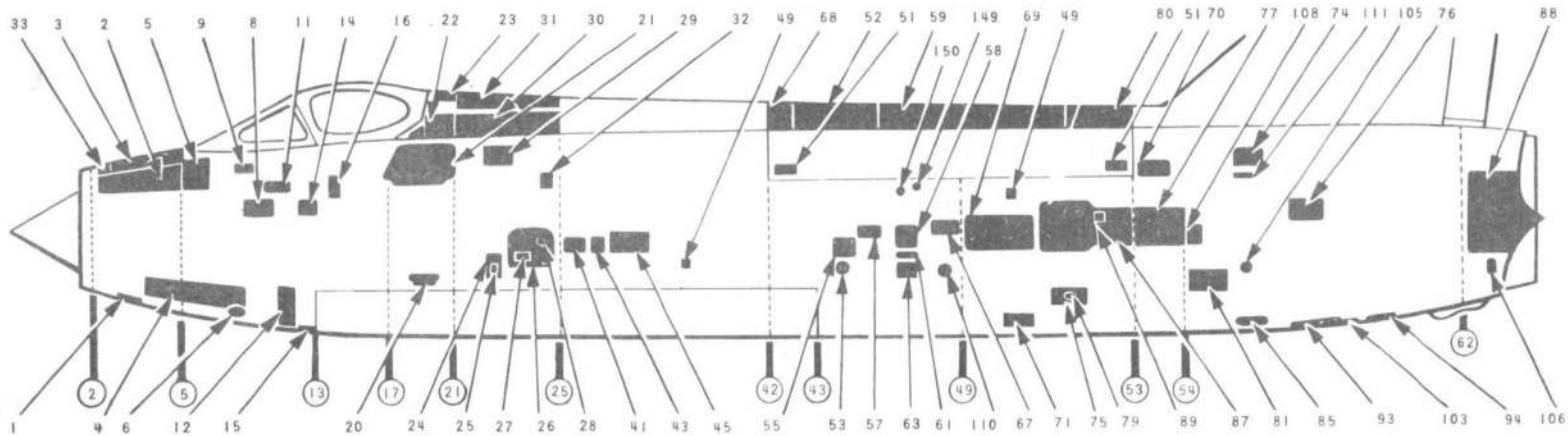


FIG.1. ACCESS PANELS

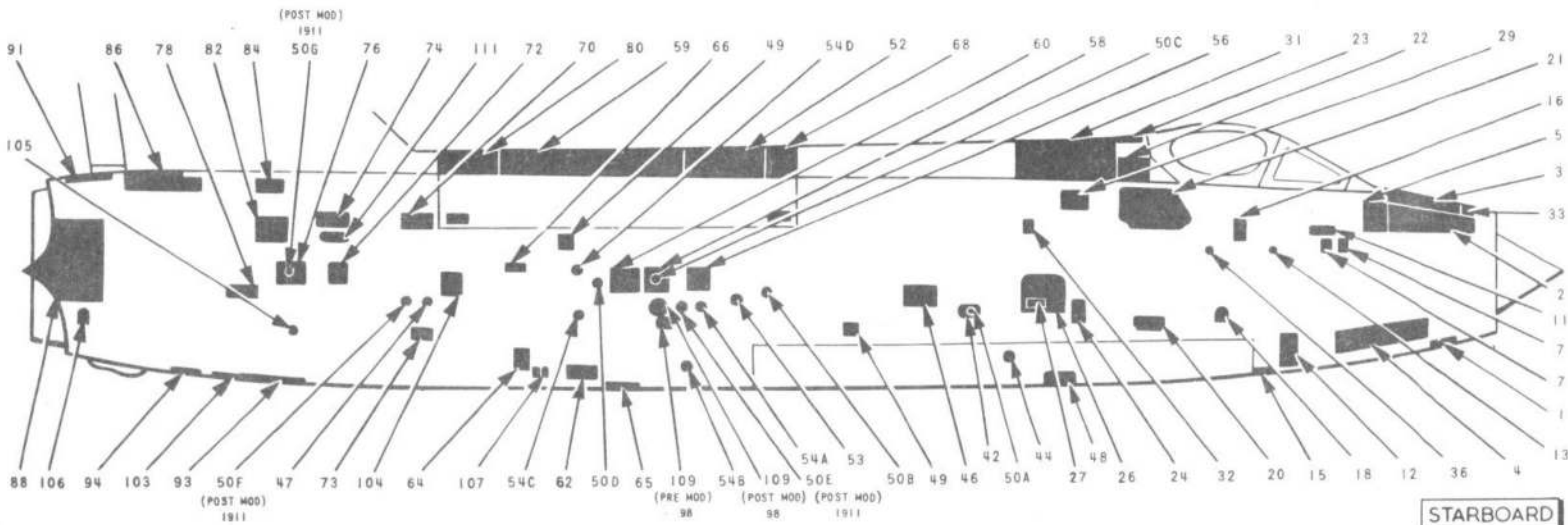
◀PANEL 154 ADDED▶

RESTRICTED

NUMERAL IN CIRCLE
DENOTES FRAME
POSITIONS



PORT



STARBOARD

FIG.2. ACCESS PANELS

◀ ITEM 35 DELETED ▶

RESTRICTED

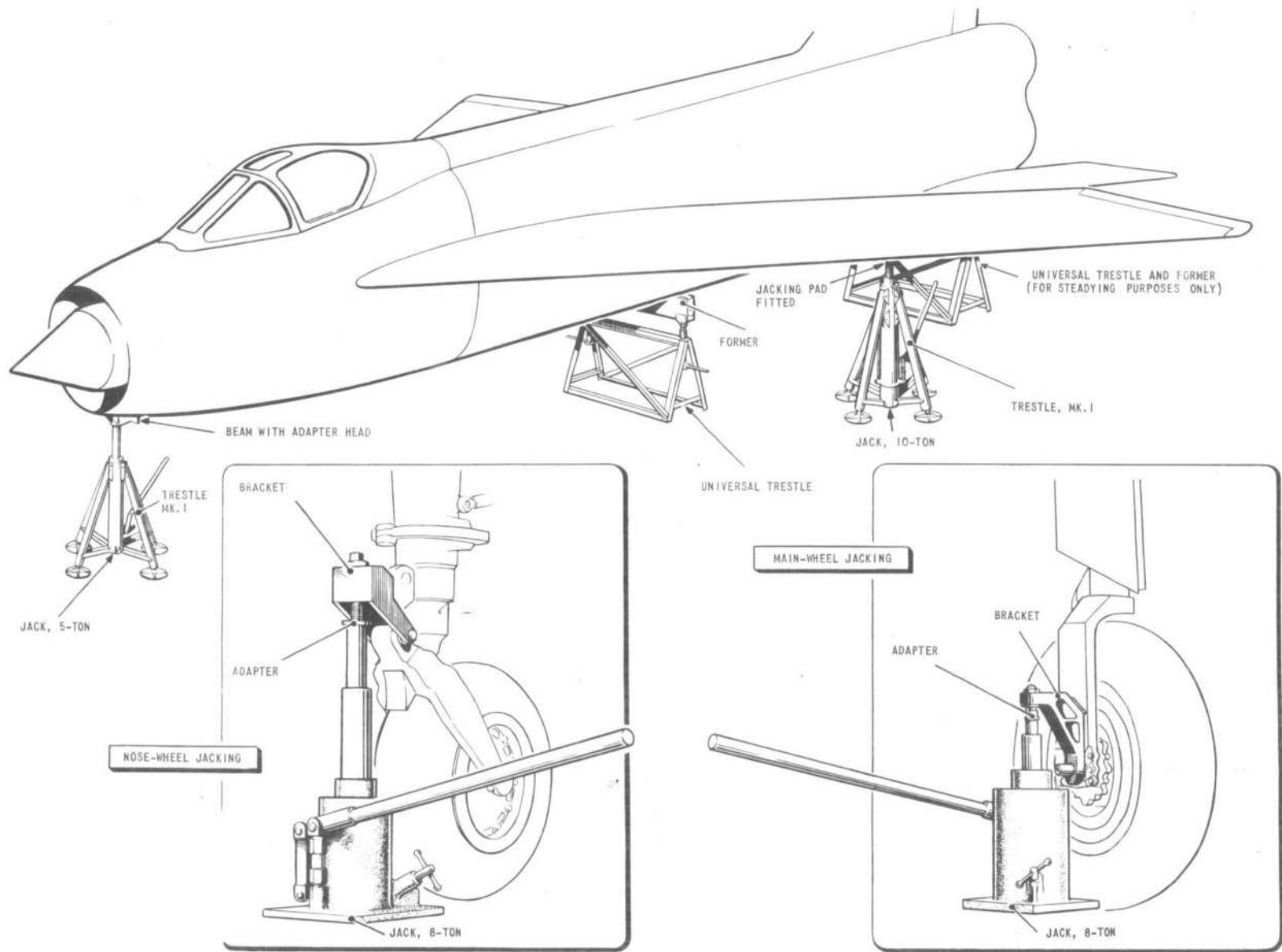


FIG. 3. JACKING AND TRESTLING

RESTRICTED

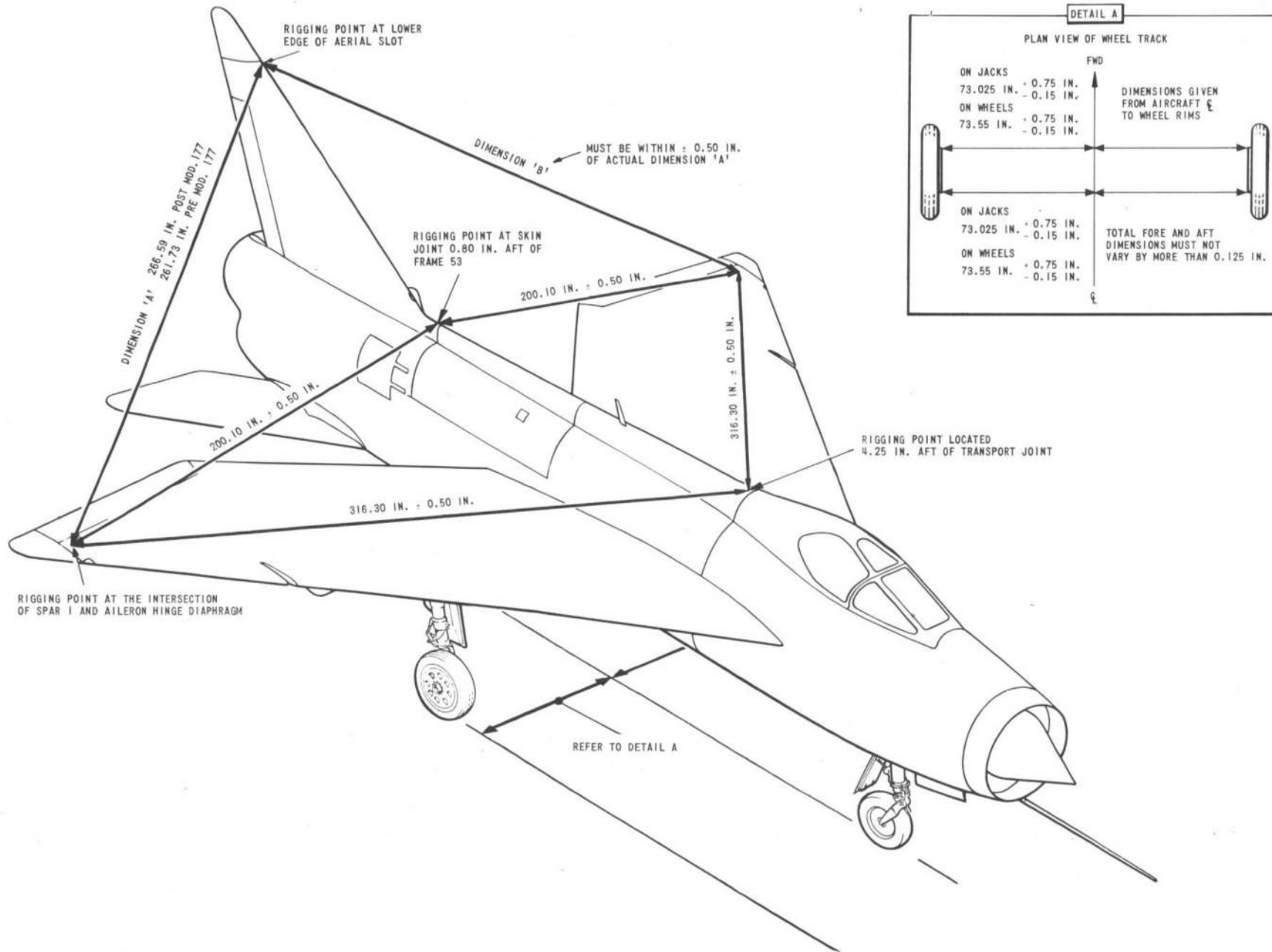
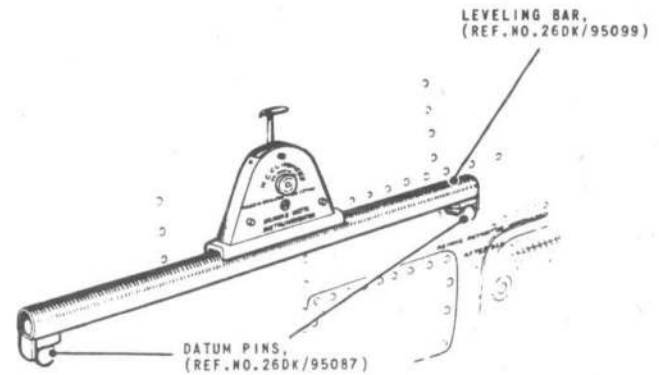
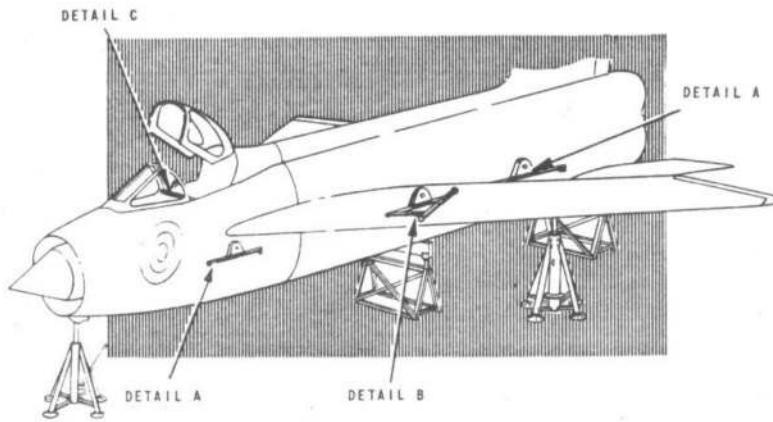


FIG. 4. AIRFRAME SYMMETRY

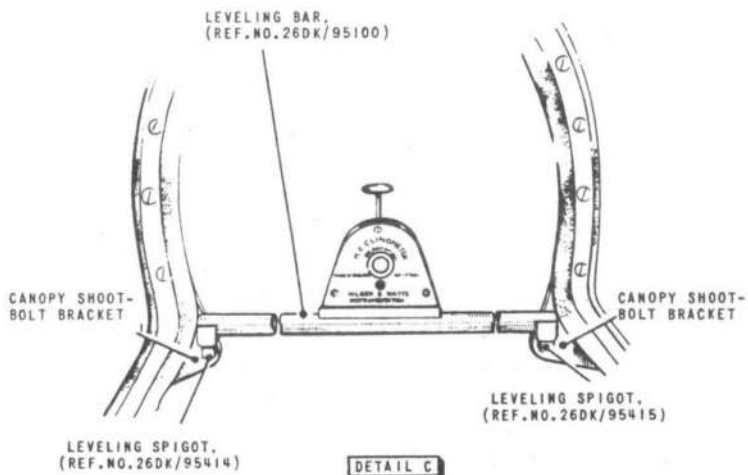
A2031-3

RESTRICTED



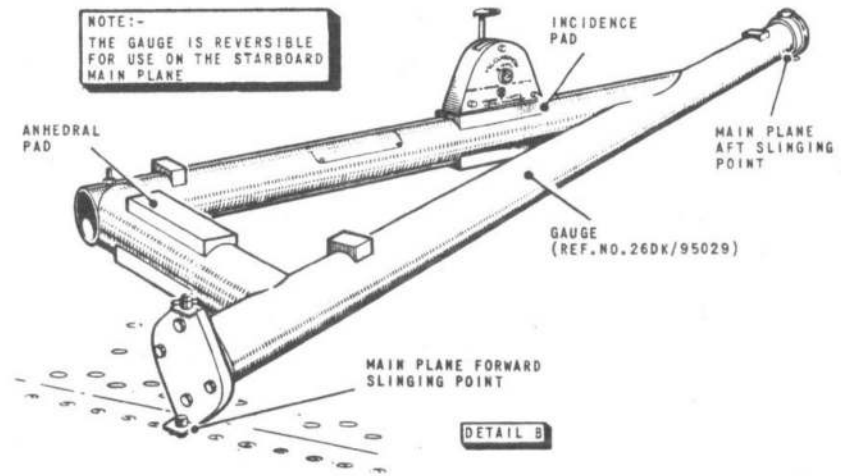
DETAIL A

FUSELAGE LONGITUDINAL LEVELING



DETAIL C

FUSELAGE LATERAL LEVELING



DETAIL B

MAIN PLANE RIGGING CHECK

FIG. 5. AIRCRAFT LEVELING AND MAIN PLANE RIGGING CHECKS

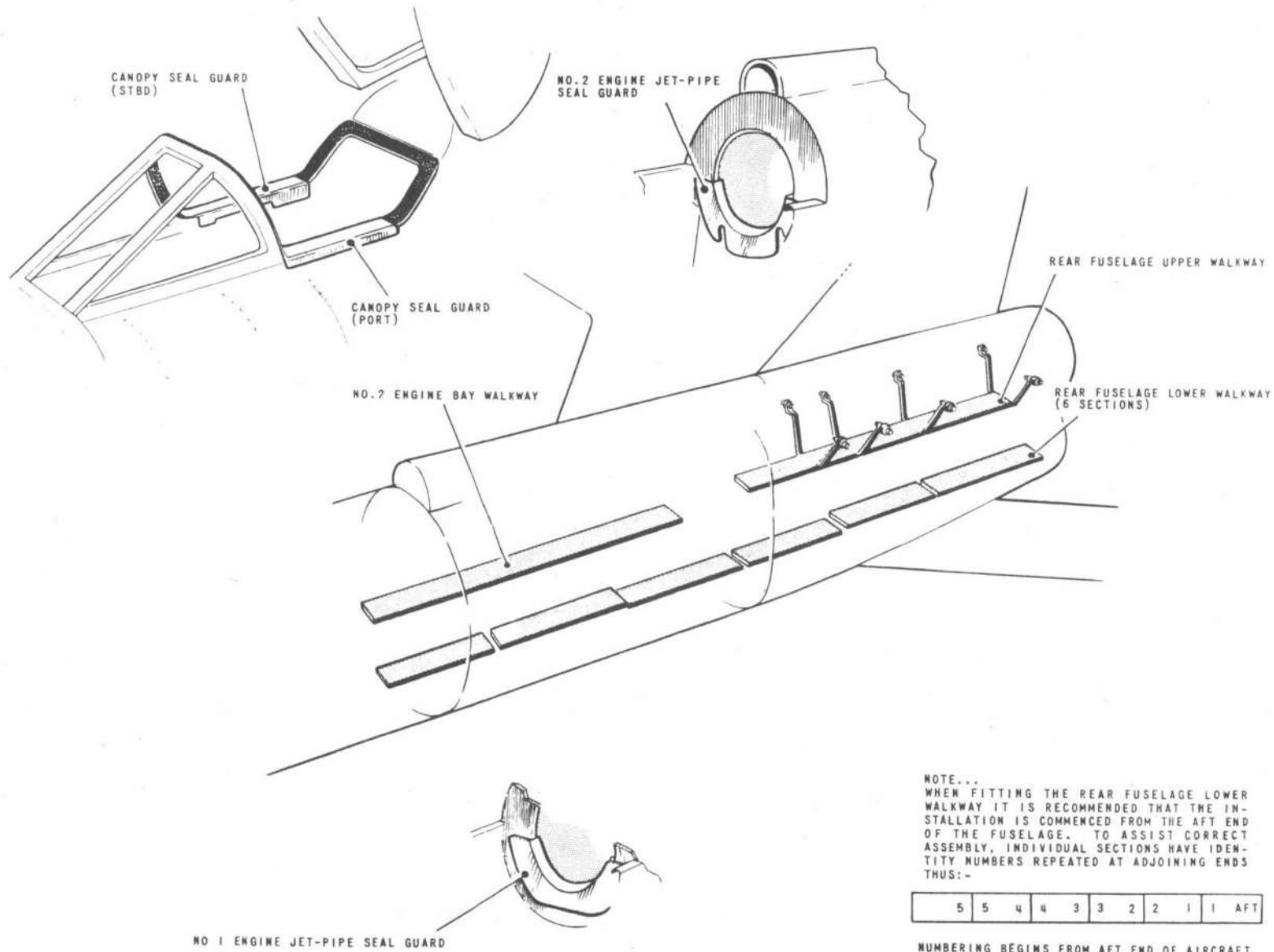


FIG. 6. FUSELAGE WALKWAYS AND GUARDS

AP033-1

RESTRICTED

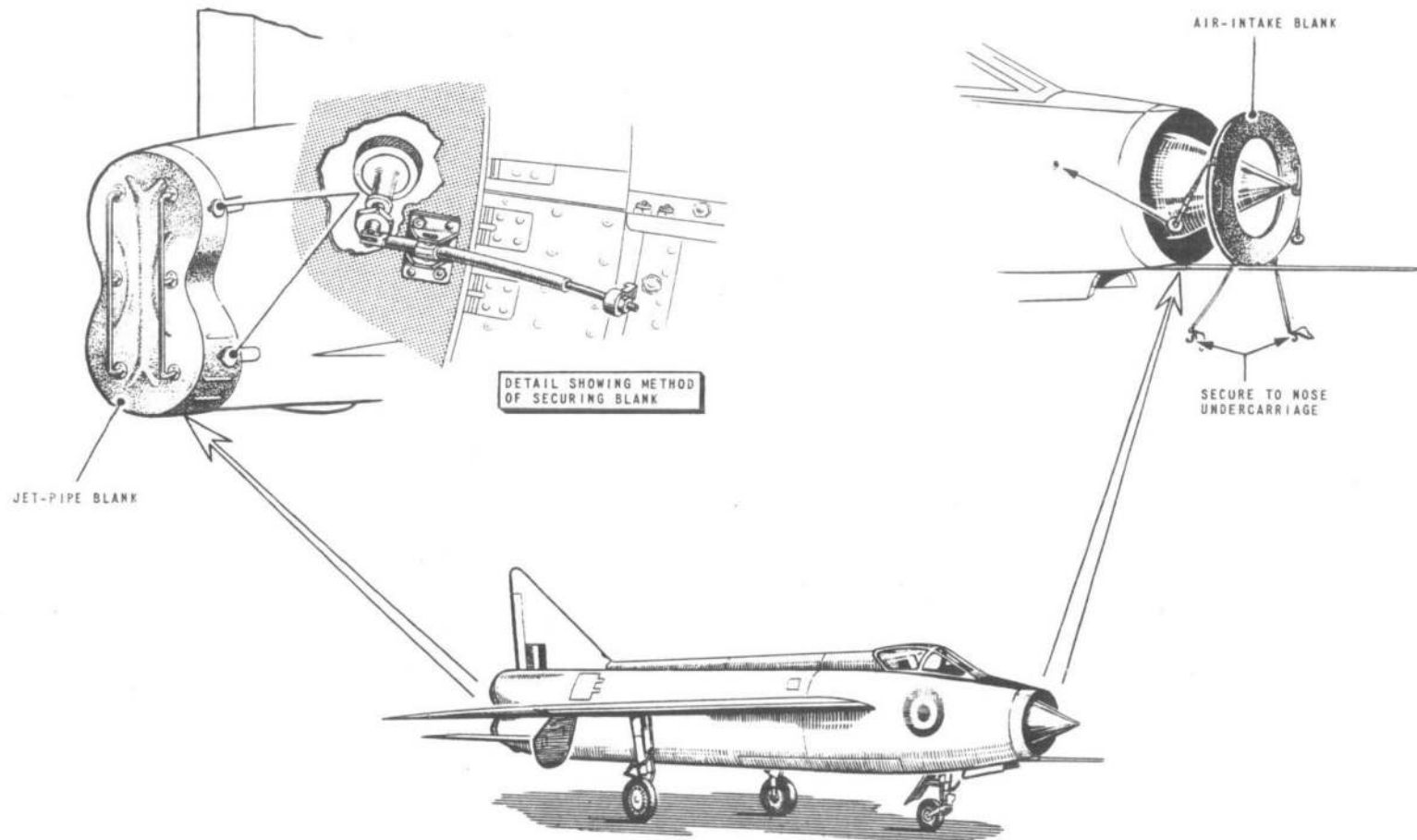
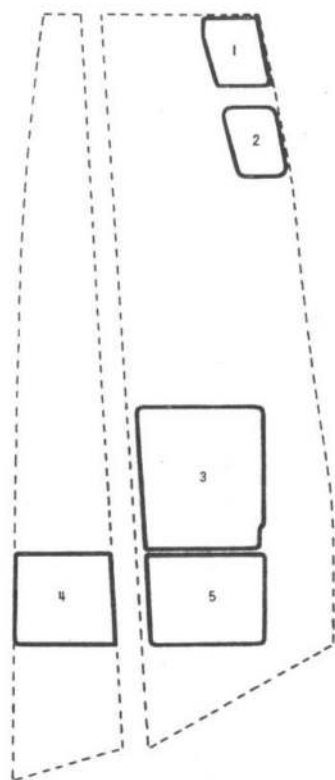


FIG. 7. BLANKS

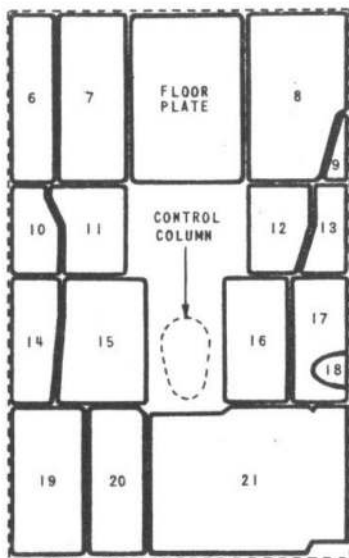
A 2054-1

RESTRICTED

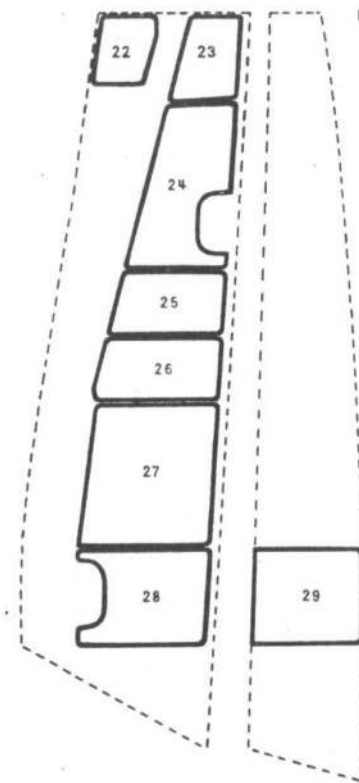


TOP SIDE

PORT CONSOLE



COCKPIT FLOOR



FRAME 6

SIDE TOP

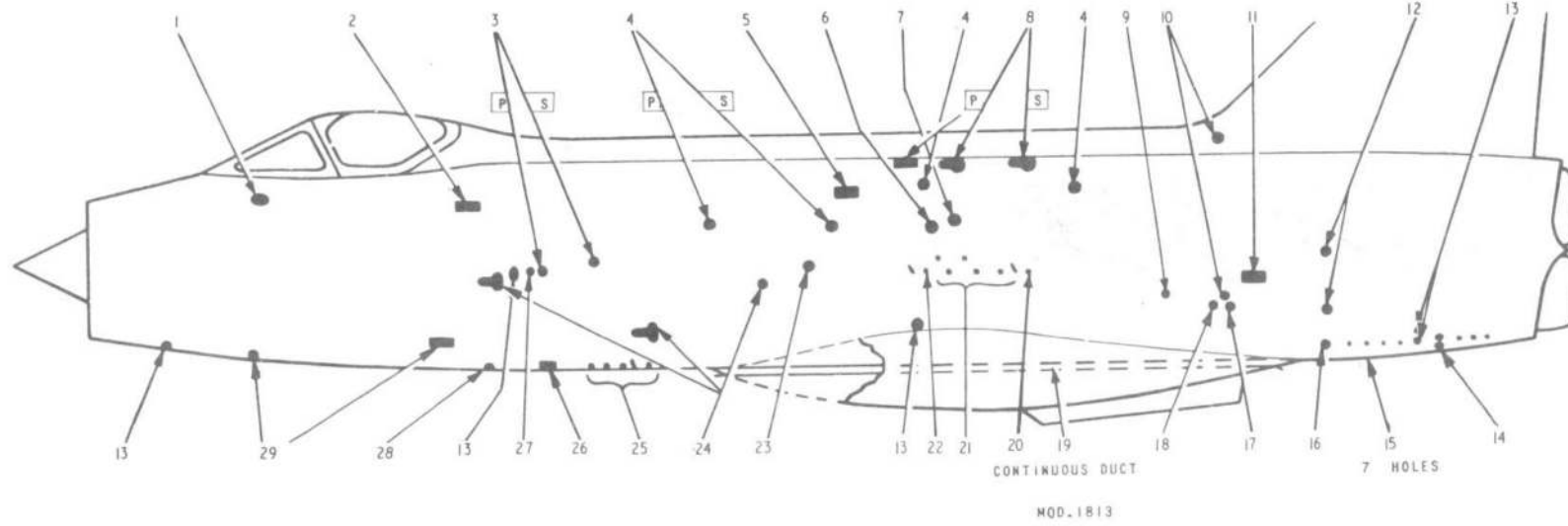
FRAME 15

STARBOARD CONSOLE

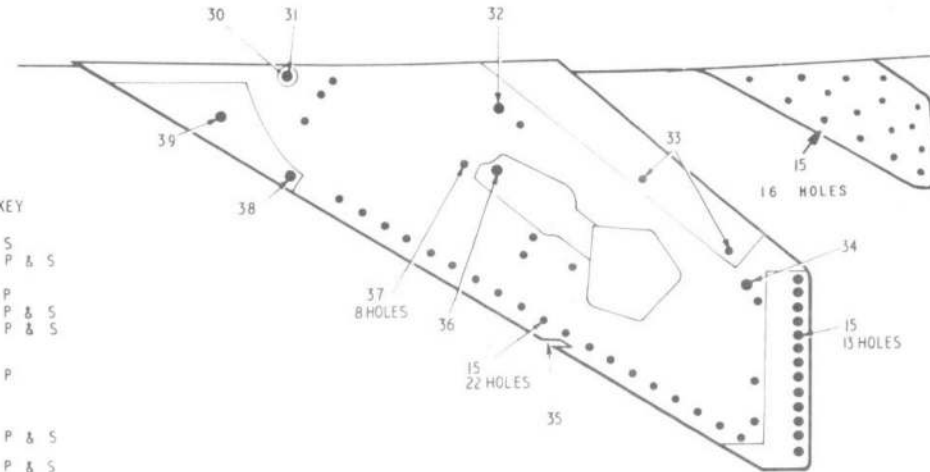
FIG. 8. ACCESS PANELS IN COCKPIT

A2036-1

RESTRICTED



POST MOD. 1813



UPPER GUN VENT
COOLING AIR DUCT
EXHAUST VENTS NO 1 ENGINE
EXHAUST VENTS NO 2 ENGINE
BLEED VALVE VENT NO 2 ENGINE
RESERVOIR DRAIN NO 1
CONTROLS AND SERVICES SYSTEMS
RESERVOIR DRAINS NO. 2
CONTROLS SYSTEM
COOLING AIR NO. 2 ENGINE
FIRE FLOOR DRAIN NO. 2 ENGINE
REHEAT COOLING AIR DUCTS
AIR TURBINE EXHAUST
JET PIPE DRAINS
PITOT AND STATIC DRAIN POINTS
TAIL-PLANE P.F.C.U. DRAIN
STRUCTURE DRAIN HOLES
NO 1 REHEAT DRAIN CONNECTION
NO 2 REHEAT DRAIN CONNECTION
GEARBOX DRAIN
DRAINAGE DUCT

KEY

1	P & S	OVERBOARD DRAIN NO 2 ENGINE (IN ACCESS PANEL 60S)
2	P & S	DRAINS NO 2 ENGINE
3	P & S	OVERBOARD DRAIN NO 2 ENGINE (IN ACCESS PANEL 55P)
4	P & S	EXHAUST OUTLET NO.1 ENGINE
5	S	AIR INLETS NO.1 ENGINE
6	P	DRAINS NO.1 ENGINE
7	S	BLEED VALVE VENT NO.1 ENGINE
8	P & S	REHEAT PUMP BLEED
9	S	STARTER EXHAUST NO.1 ENGINE
10		GUN PACK VENT
11	P	OUTWARD VENT FROM FUEL TANK
12	P	FUEL TANK OUTWARD VENT VALVE DRAINS
13		DRAIN FROM PULSOMETER FUEL PUMP
14		FLAP TANK WATER DRAINS
15		FLOW SENSING VALVE DRAIN
16		INWARD VENT TO FUEL TANK
17		WATER DRAIN HOLE
18	P	MAIN TANK FUEL SAMPLING DRAIN
19		LEADING EDGE FUEL TANK DRAIN
		FUEL TRANSFER PUMP DRAIN

KEY

20	S	
21	P & S	
22	P	
23	P & S	
24	P & S	
25		
26		
27	P	
28		
29		
30		
31	P & S	
32		
33	P & S	
34	P & S	
35	P & S	
36		
37	P & S	
38	P & S	
39	P & S	

FIG. 9. VENTS AND DRAINS

◀ WING DRAIN HOLES REVISED ▶

RESTRICTED

TYPICAL IDENTIFICATION
MARKING TO BE APPLIED
TO REAR FUSE DRAINS



YELLOW CIRCLE AROUND
DRAIN HOLE IN SKIN

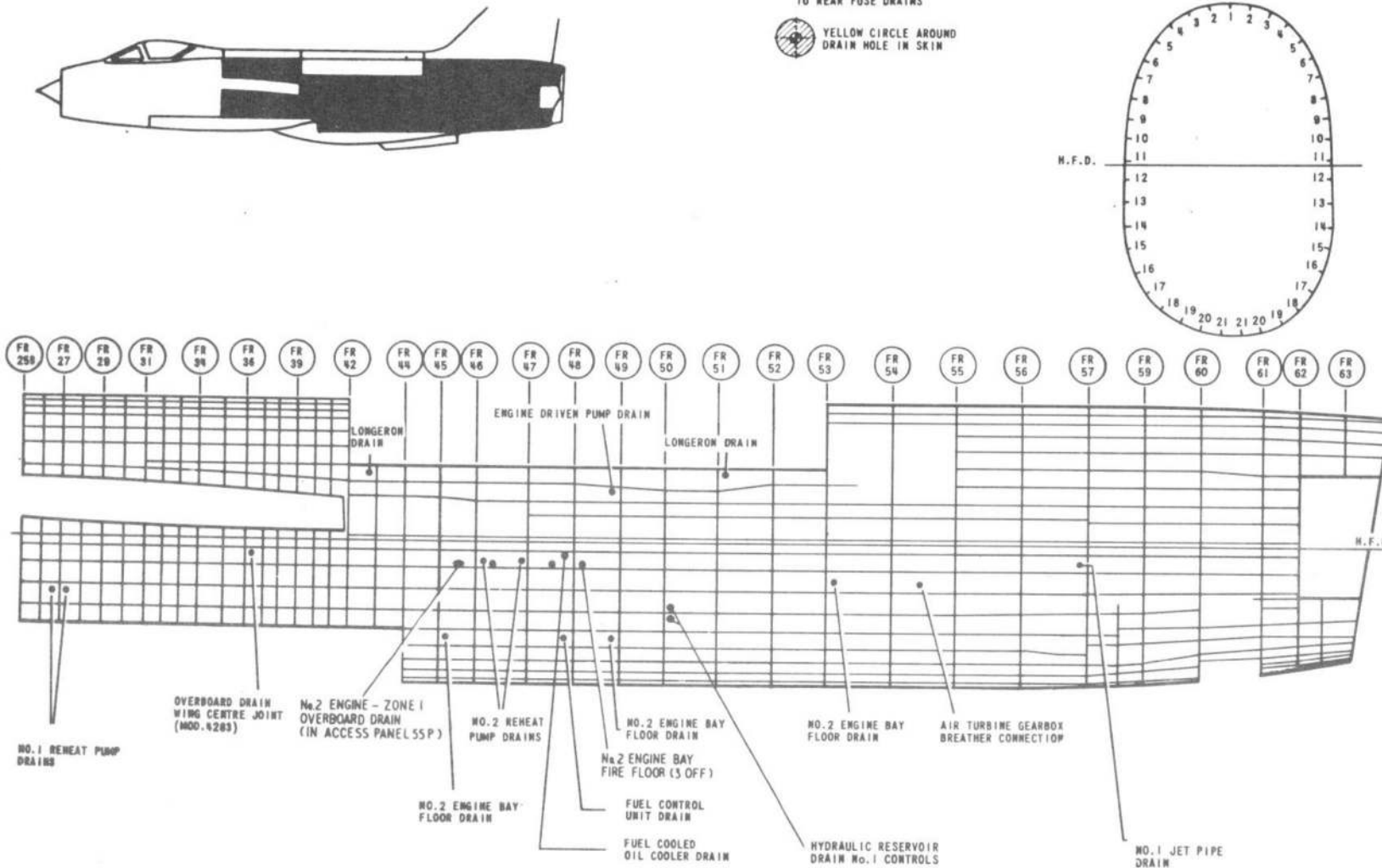
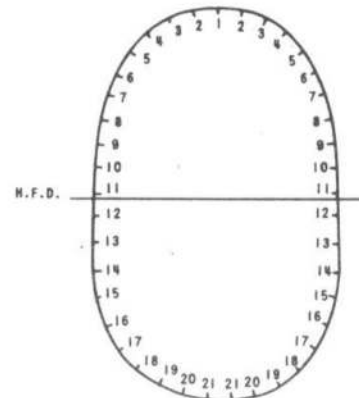
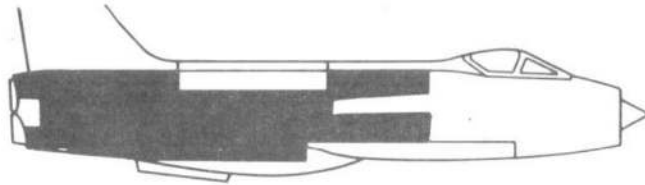



FIG. 10. PORT SKIN DRAIN HOLES (MK 1)

◀ MOD No. 4654 ▶

RESTRICTED

AIR DIAGRAM-MIN
101B-1001-MD4A SHEET 1
BY COMMAND OF THE DEFENCE COUNCIL FOR USE IN THE
ROYAL AIR FORCE
ISSUE 2 Prepared by 8000(PE)



TYPICAL IDENTIFICATION
MARKING TO BE APPLIED
TO REAR FUSE DRAINS
 YELLOW CIRCLE AROUND
DRAIN HOLE IN SKIN

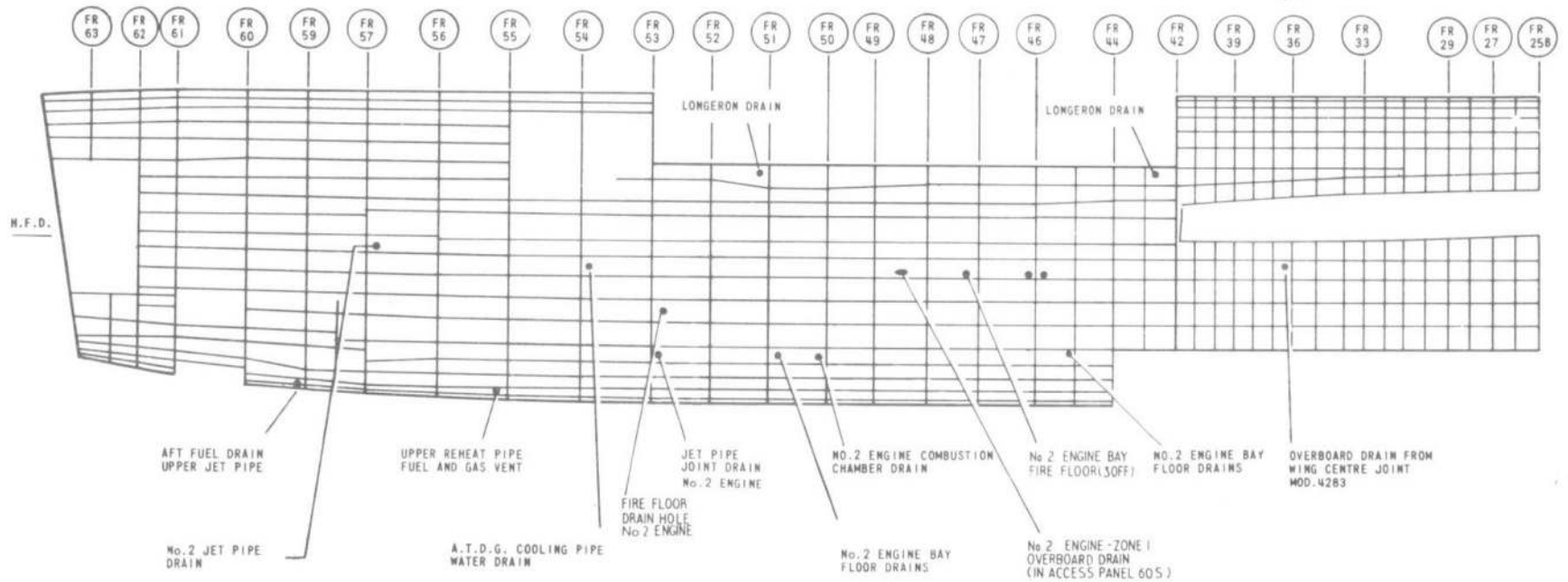
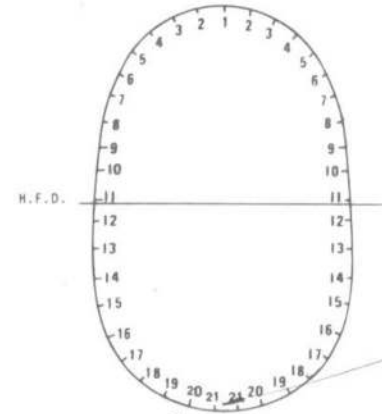
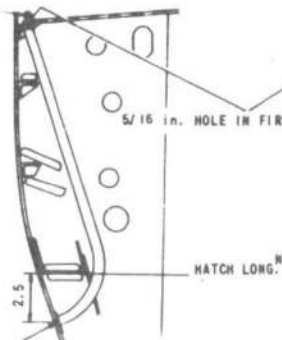


FIG. II. STARBOARD SKIN DRAIN HOLES (MK.1)
◀ MODS.No.4598 & 4654 ▶

AIR DIAGRAM-MIN
101B-1001-MD4A SHEET 2
BY COMMAND OF THE DEFENCE COUNCIL FOR USE IN THE
ROYAL AIR FORCE
ISSUE 2 Prepared by MOD/PEI

RESTRICTED

TYPICAL DRAIN PATH HOLE IN FRAMES SHOWN THUS



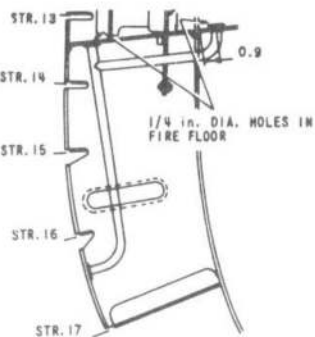
HOLE IN SKIN

SECTION A-A

VIEW LOOKING FWD ON FRM 45 PORT AS DRAWN FRM 46 STBD OPPOSITE.

TYPICAL IDENTIFICATION MARKING TO BE APPLIED TO REAR FUSE DRAINS
YELLOW CIRCLE AROUND DRAIN HOLE IN SKIN

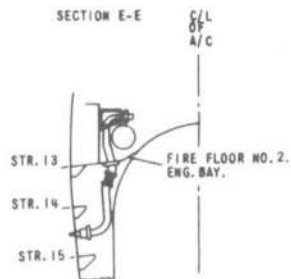
SECTION B-B
VIEW LOOKING AFT ON FRM 49 - PORT SIDE



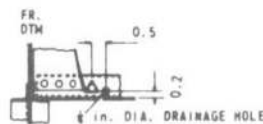
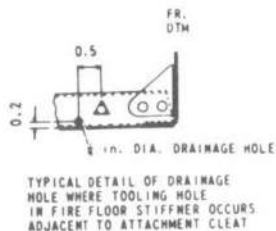
SECTION C-C

VIEW LOOKING AFT ON FRM 51 - STBD. SIDE.

SECTION E-E



NO. 2 ENGINE JET PIPE JOINT DRAIN
VIEW LOOKING AFT ON FRM 53 - STBD. SIDE

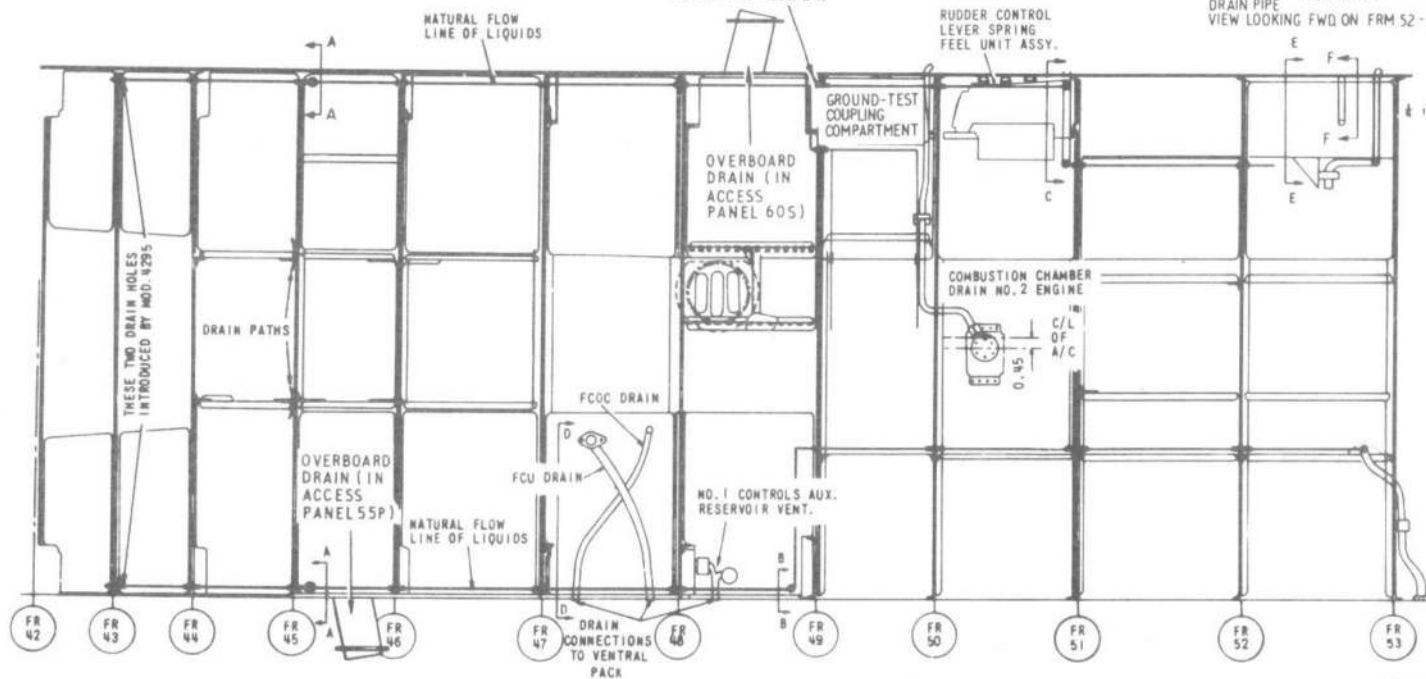


TYPICAL DETAIL OF DRAINAGE HOLE WHERE TOOLING HOLE IN FIRE FLOOR STIFFENER OCCURS ADJACENT TO STABILIZER

FIRE FLOOR No. 2 ENG. BAY
C/L OF A/C

SECTION F-F
VIEW LOOKING FWD ON FRM 52 - STBD. SIDE

THIS DRAIN HOLE IS SEALED ON INSTALLATION OF MAIN GROUND-TEST COUPLING



TYPICAL DETAIL OF DRAINAGE HOLE WHERE FORMED FLANGE ON FIRE FLOOR STIFFENER GIVES ATTACHMENT TO FRAME

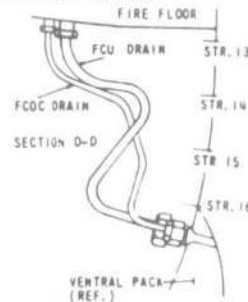
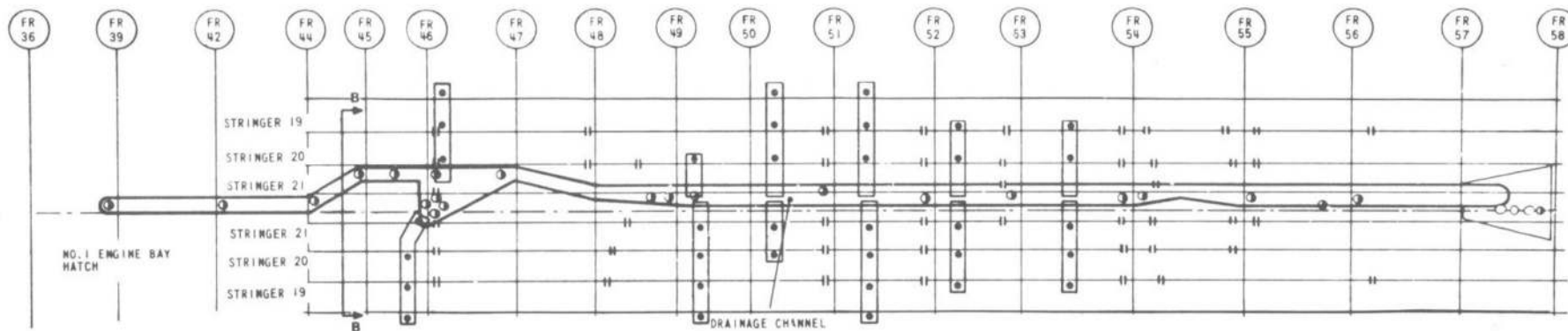
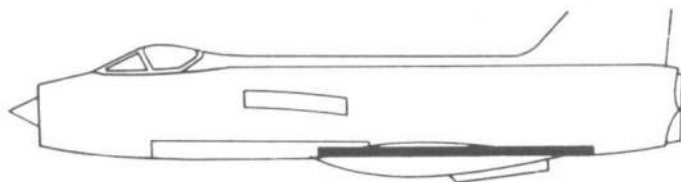


FIG.12. NO.2. ENGINE BAY DRAINAGE (MK.1)

◀MODS NO 4598 & 4654 ▶

RESTRICTED

AIR DIAGRAM - MIN
1018-1001-MD4A SHEET 3 of 6
BY COMMAND OF THE DEFENCE COUNCIL FOR USE IN THE ROYAL AIR FORCE
ISSUE 2 Prepared by MOD/PEI



- HIDDEN DRAIN HOLES
- ⊙ 1/4" DRAIN HOLES
- 3/16" DRAIN HOLES
- || STRINGER DRAIN PATHS

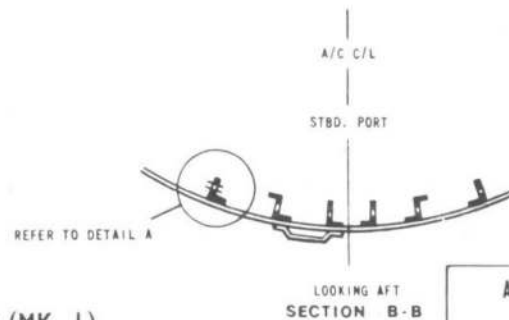
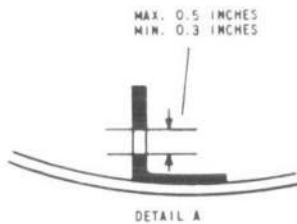
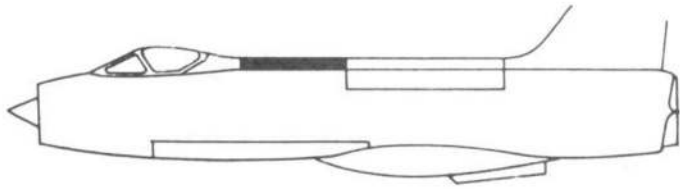


FIG. 13. NO. 1 JET PIPE BAY DRAINAGE (MK. 1)

AIR DIAGRAM-MIN
101B-1001-MD-1A SHEET 4
BY COMMAND OF THE DEFENCE COUNCIL FOR USE IN THE
ROYAL AIR FORCE
ISSUE 1. Prepared by MOD/PI

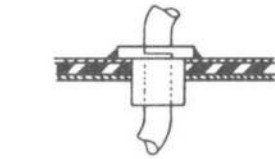
RESTRICTED



TYPICAL IDENTIFICATION MARKING TO BE APPLIED TO REAR FUSE DRAINS

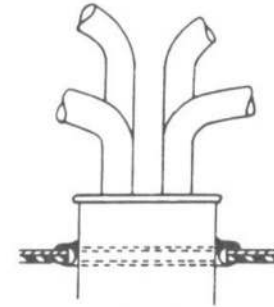


YELLOW CIRCLE AROUND DRAIN HOLE IN SKIN

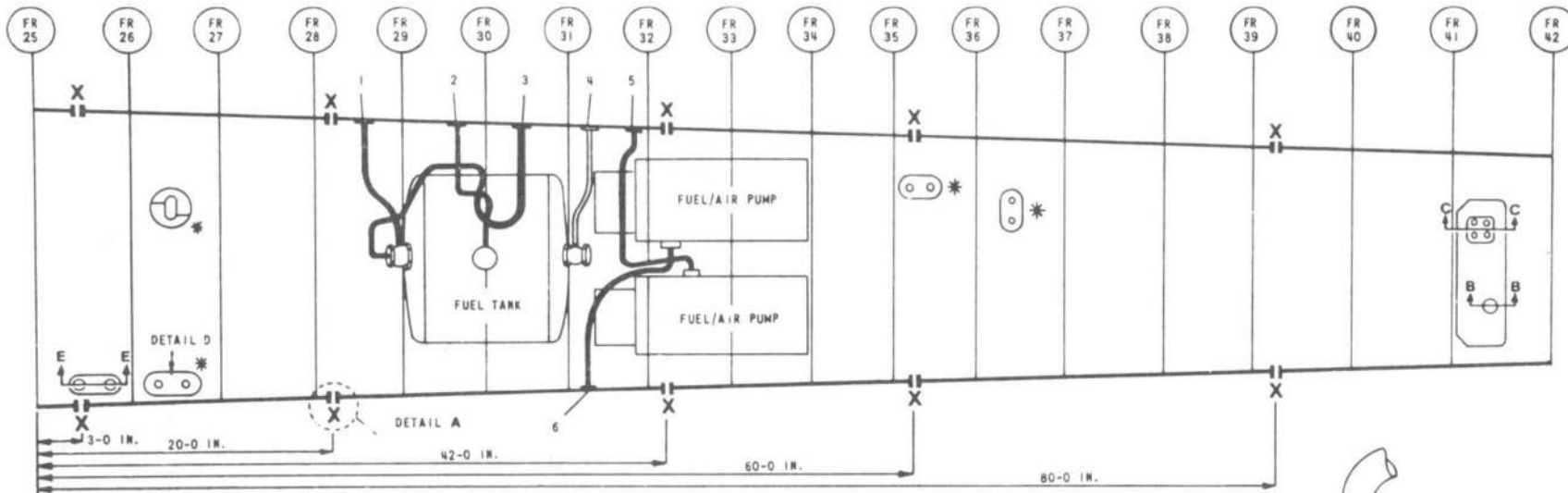


BOSTIK SEALING
DETAIL D

TYPICAL OF POSITIONS MARKED *

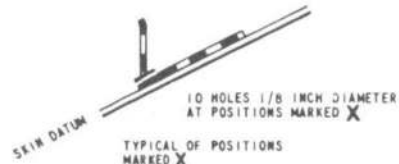


SECTION C-C



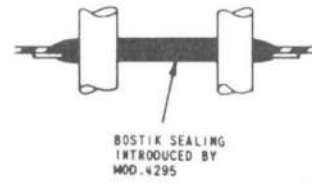
KEY TO APERTURES

- 1. TANK OUTWARD VENT
- 2. TANK OVERFLOW DRAIN
- 3. TANK DRAIN
- 4. TANK INWARD VENT
- 5. PORT PUMP UNIT GLAND SEAL DRAIN
- 6. STBD. PUMP UNIT GLAND SEAL DRAIN



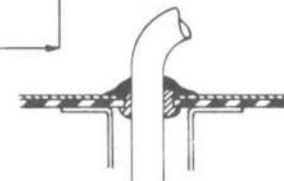
10 HOLES 1/8 INCH DIAMETER AT POSITIONS MARKED X

DETAIL A



BOSTIK SEALING INTRODUCED BY MOD. 4295

SECTION E-E



SECTION B-B

FIG.14. DRAINAGE IN SPINE (MK.1)

RESTRICTED

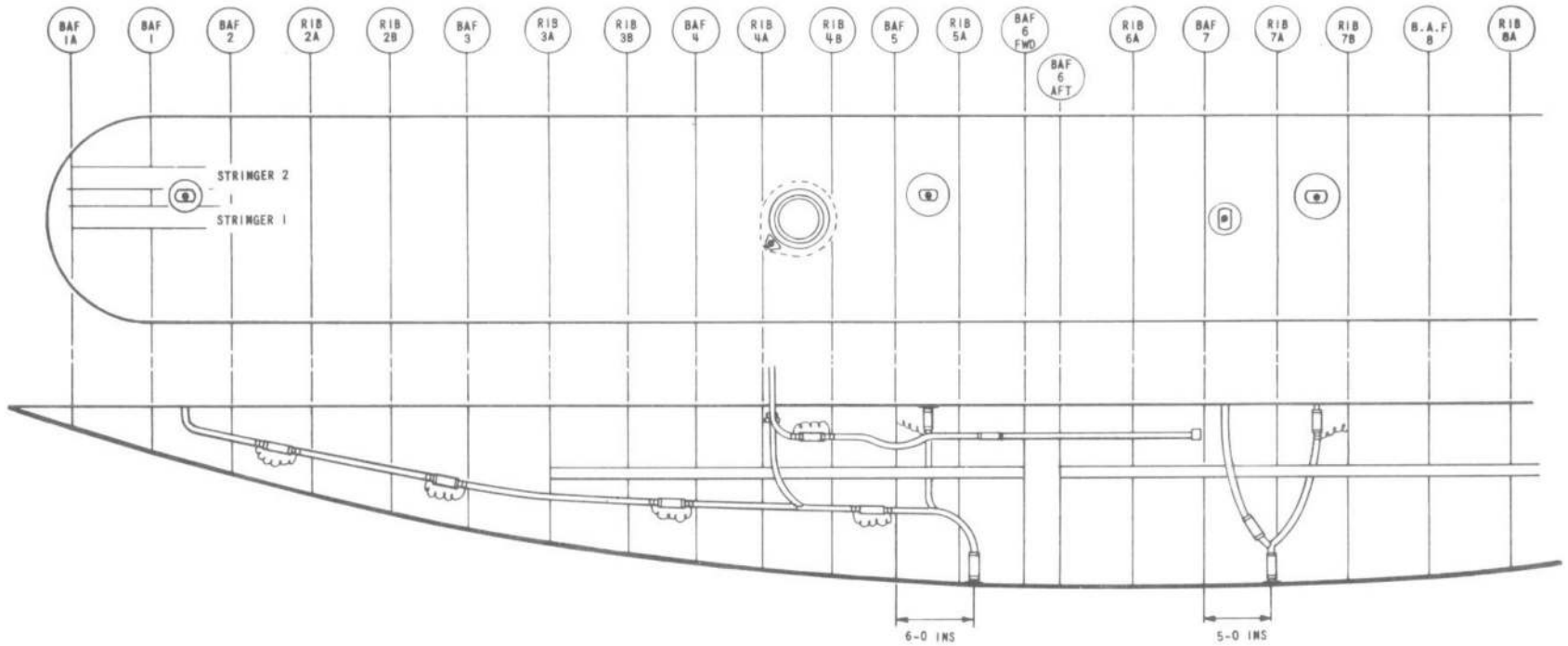
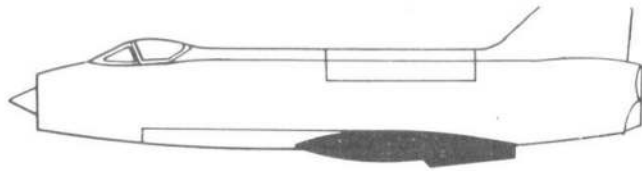
AIR DIAGRAM-MIN

101B-1001-MD4A SHEET 5

BY COMMAND OF THE DEFENCE COUNCIL FOR USE IN THE ROYAL AIR FORCE

ISSUE 1.

Prepared by MOD/PEI



TYPICAL IDENTIFICATION
MARKING TO BE APPLIED
TO REAR FUSE DRAINS



YELLOW CIRCLE AROUND DRAIN
HOLES IN TOP AND BOTTOM
SKIN SURFACE

AIR DIAGRAM-MIN

101B-1001-MD4A SHEET 6

BY COMMAND OF THE DEFENCE COUNCIL FOR USE IN THE
ROYAL AIR FORCE

ISSUE 1 Prepared by MOD(PF)

FIG.15. VENTRAL TANK (Mk.I)

RESTRICTED

TYPICAL IDENTIFICATION
MARKING TO BE APPLIED
TO REAR FUSE DRAINS



YELLOW CIRCLE AROUND
DRAIN HOLE IN SKIN

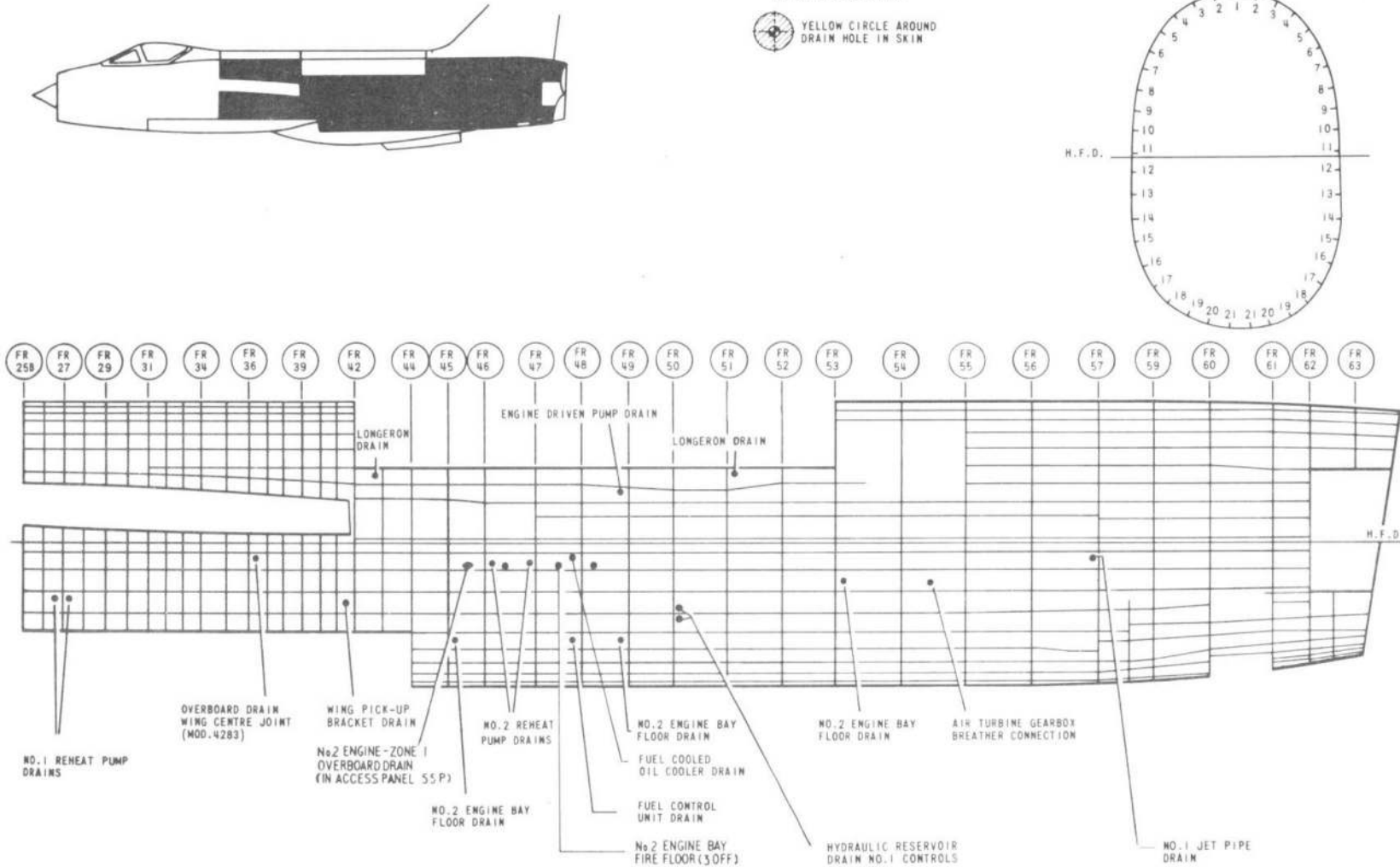
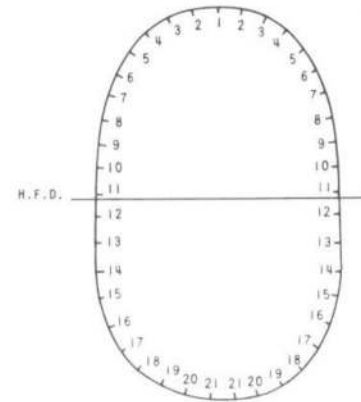


FIG.16. PORT SKIN DRAIN HOLES (MK1A)
◀MOD.No. 4654 ▶

RESTRICTED

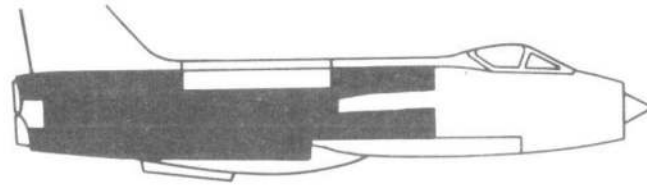
AIR DIAGRAM-MIN

101B-1001-MD4B SHEET 1

BY COMMAND OF THE DEFENCE COUNCIL FOR USE IN THE
ROYAL AIR FORCE

ISSUE 2

Prepared by MOD.PI1



TYPICAL IDENTIFICATION MARKING TO BE APPLIED TO REAR FUSE DRAINS

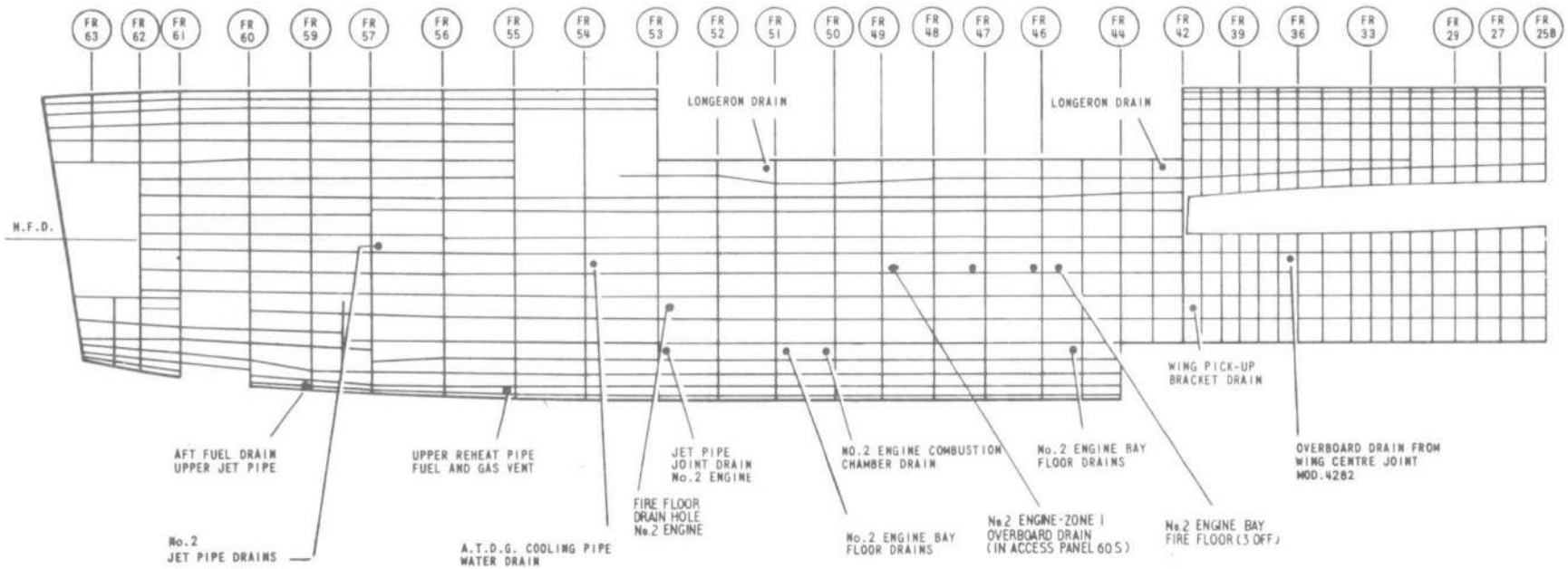
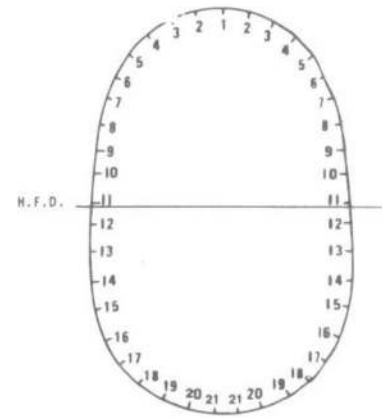
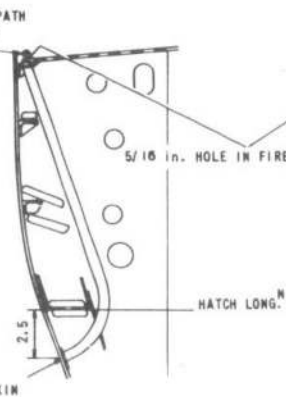


FIG. 17. STARBOARD SKIN DRAIN HOLES (MK.1A)
◀ MODS. No 4598 & 4654 ▶

AIR DIAGRAM-MIN
101B-1001-MD4B SHEET 2
BY COMMAND OF THE DEFENCE COUNCIL FOR USE IN THE
ROYAL AIR FORCE
ISSUE 2 Prepared by MOD/PEI

RESTRICTED

TYPICAL DRAIN PATH
HOLE IN FRAMES
SHOWN THUS



SECTION A-A

VIEW LOOKING FWD
ON FRM 45 PORT AS DRAWN
FRM 46 STBD OPPOSITE.

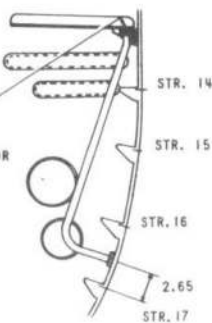
TYPICAL IDENTIFICATION
MARKING TO BE APPLIED
TO REAR FUSE DRAINS



NATURAL FLOW
LINE OF LIQUIDS

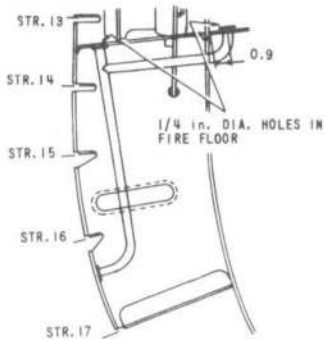
SECTION B-B

VIEW LOOKING AFT ON
FRM 49 - PORT SIDE



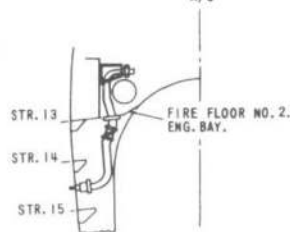
SECTION C-C

VIEW LOOKING AFT ON
FRM 51 - STBD. SIDE.

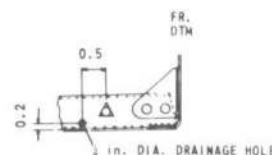


SECTION E-E

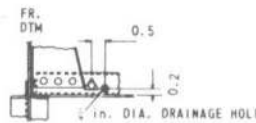
C/L
OF
A/C



NO. 2 ENGINE JET PIPE JOINT DRAIN
VIEW LOOKING AFT ON FRM 53 - STBD. SIDE



TYPICAL DETAIL OF DRAINAGE
HOLE WHERE TOOLING HOLE
IN FIRE FLOOR STIFFNER OCCURS
ADJACENT TO ATTACHMENT CLEAT



TYPICAL DETAIL OF DRAINAGE
HOLE WHERE TOOLING HOLE IN
FIRE FLOOR STIFFNER OCCURS
ADJACENT TO STABILIZER

FIRE FLOOR
No. 2 ENG BAY

STR 13
STR 14
STR 15

C/L
OF
A/C

DRAIN PIPE
VIEW LOOKING FWD ON FRM 52 - STBD. SIDE

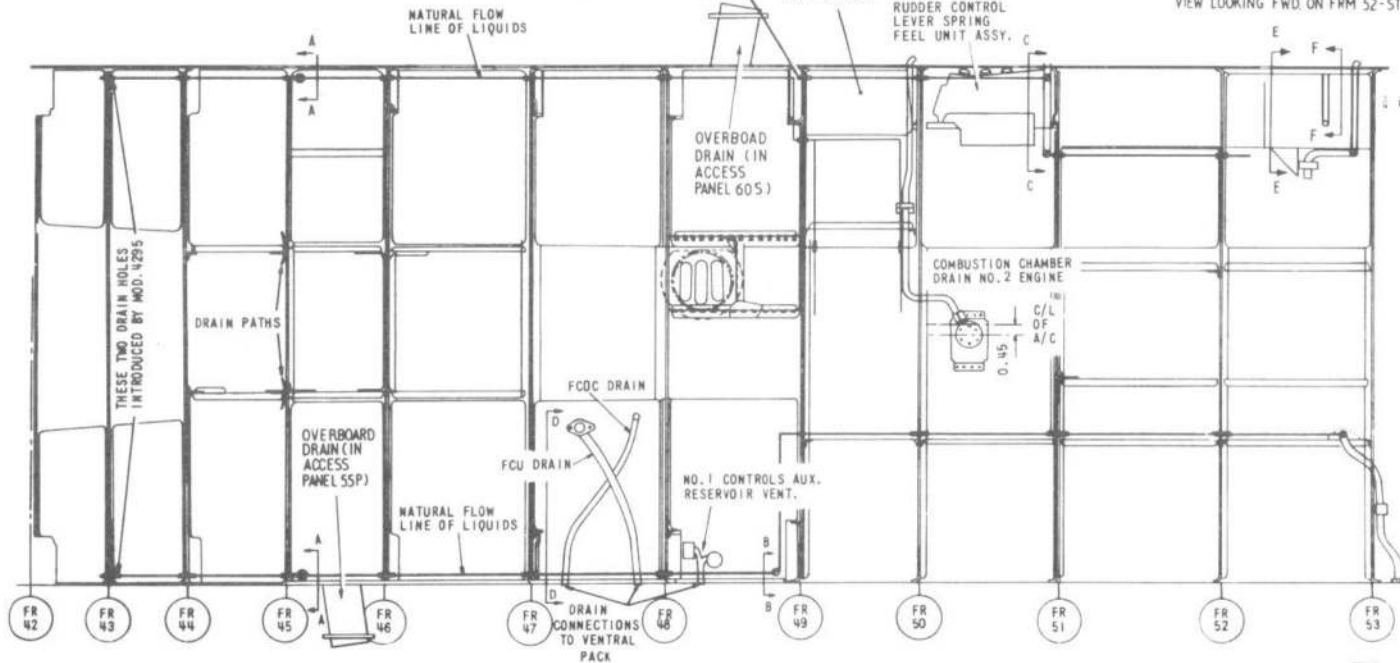
SECTION F-F

VIEW LOOKING FWD ON FRM 52 - STBD. SIDE

THIS DRAIN HOLE IS SEALED
ON INSTALLATION OF MAIN
GROUND-TEST COUPLING

GROUND-TEST
COUPLING
COMPARTMENT

RUDDER CONTROL
LEVER SPRING
FEEL UNIT ASSY.



TYPICAL DETAIL OF DRAINAGE HOLE
WHERE FORMED FLANGE ON
FIRE FLOOR STIFFNER GIVES
ATTACHMENT TO FRAME

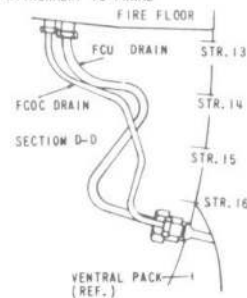


FIG. 18. NO. 2 ENGINE BAY DRAINAGE (MK. 1A)

◀ MODS. NO. 4598 & 4654 ▶

RESTRICTED

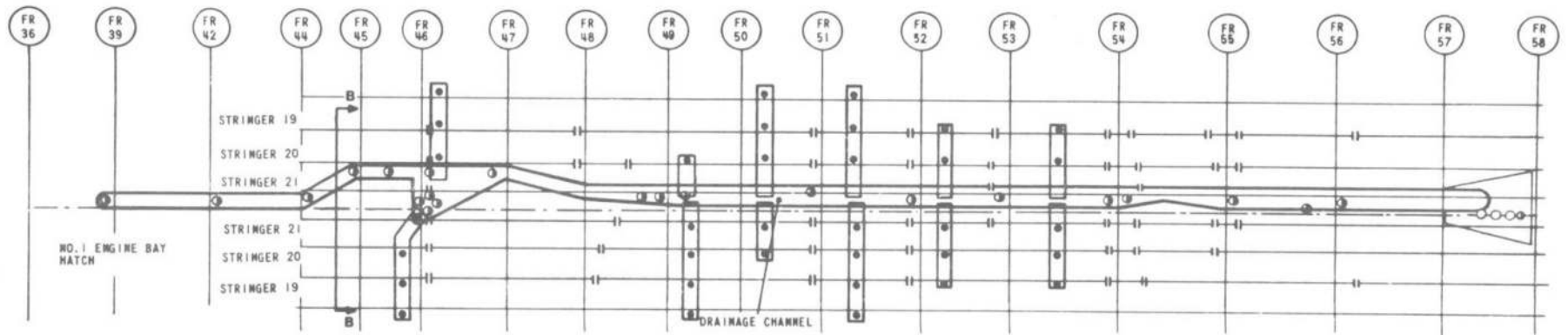
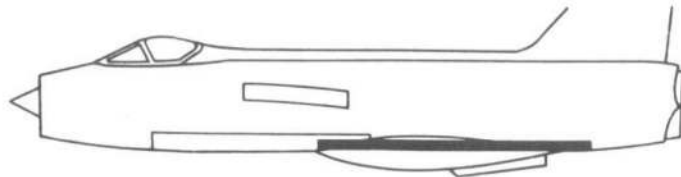
AIR DIAGRAM - MIN

101B-1001-MD4B SHEET 3 of 6

BY COMMAND OF THE REFERENCE COUNCIL FOR USE IN THE
ROYAL AIR FORCE

ISSUE 2

Prepared by MOD/PE1



- HIDDEN DRAIN HOLES
- 1/4" DRAIN HOLES
- 3/16" DRAIN HOLES
- || STRINGER DRAIN PATHS

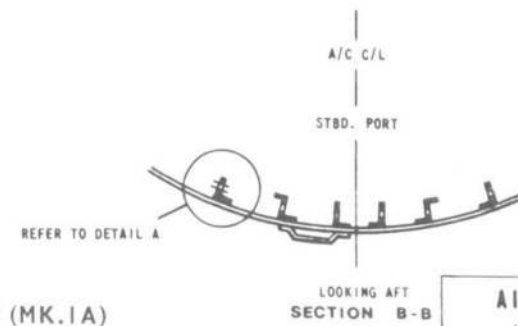
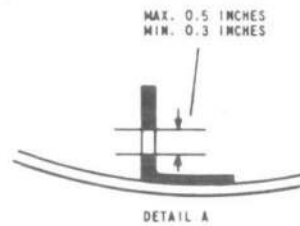
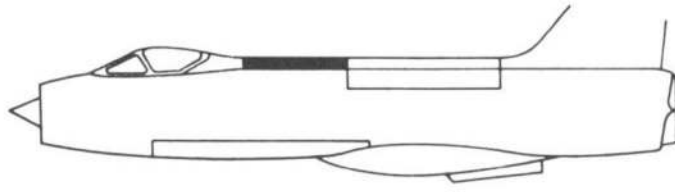


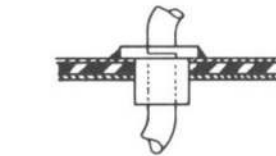
FIG.19. NO.1 JET PIPE BAY DRAINAGE (MK.1A)

AIR DIAGRAM-MIN
 101B-1001-MD4B SHEET 4
 BY COMMAND OF THE DEFENCE COUNCIL FOR USE IN THE
 ROYAL AIR FORCE
 ISSUE 1 Prepared by MOD(P1)

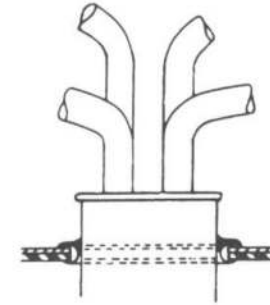
RESTRICTED



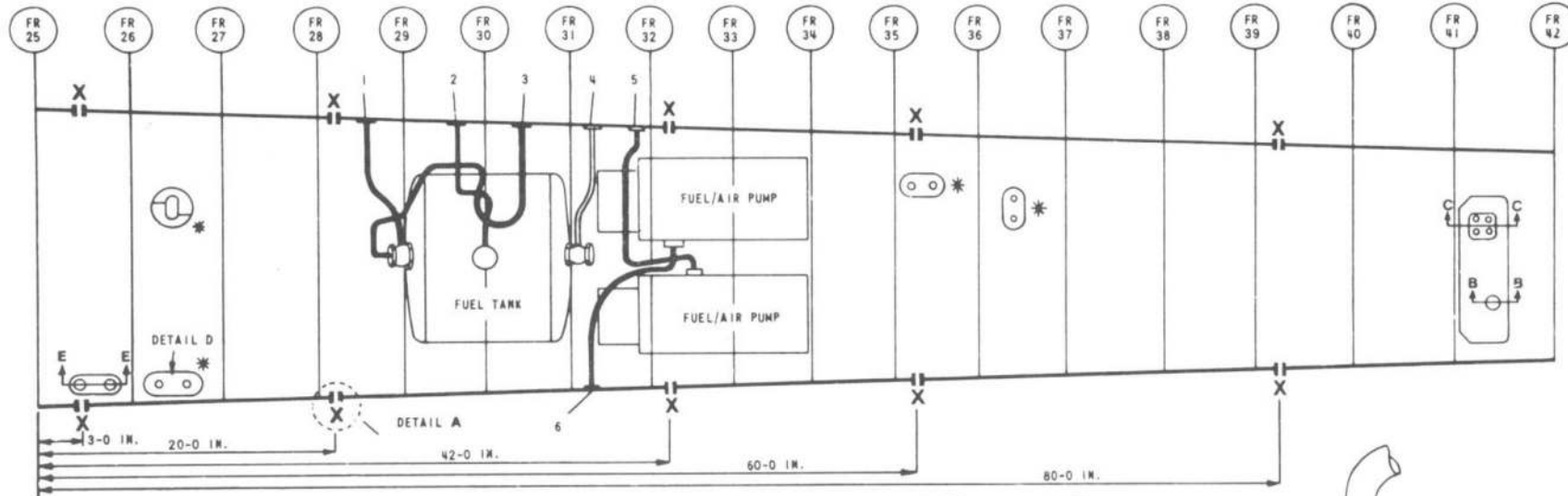
TYPICAL IDENTIFICATION MARKING TO BE APPLIED TO REAR FUSE DRAINS



TYPICAL OF POSITIONS MARKED *

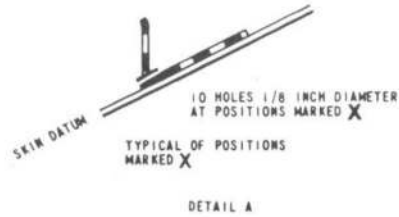


SECTION C-C



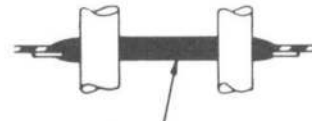
KEY TO APERTURES

- 1. TANK OUTWARD VENT
- 2. TANK OVERFLOW DRAIN
- 3. TANK DRAIN
- 4. TANK INWARD VENT
- 5. PORT PUMP UNIT GLAND SEAL DRAIN
- 6. STBD. PUMP UNIT GLAND SEAL DRAIN



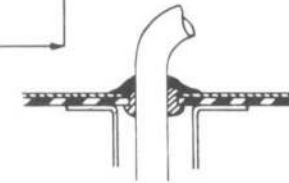
TYPICAL OF POSITIONS MARKED *

DETAIL A



BOSTIK SEALING INTRODUCED BY MOD. 4295

SECTION E-E



SECTION B-B

FIG.20. DRAINAGE IN SPINE (MK.1A)

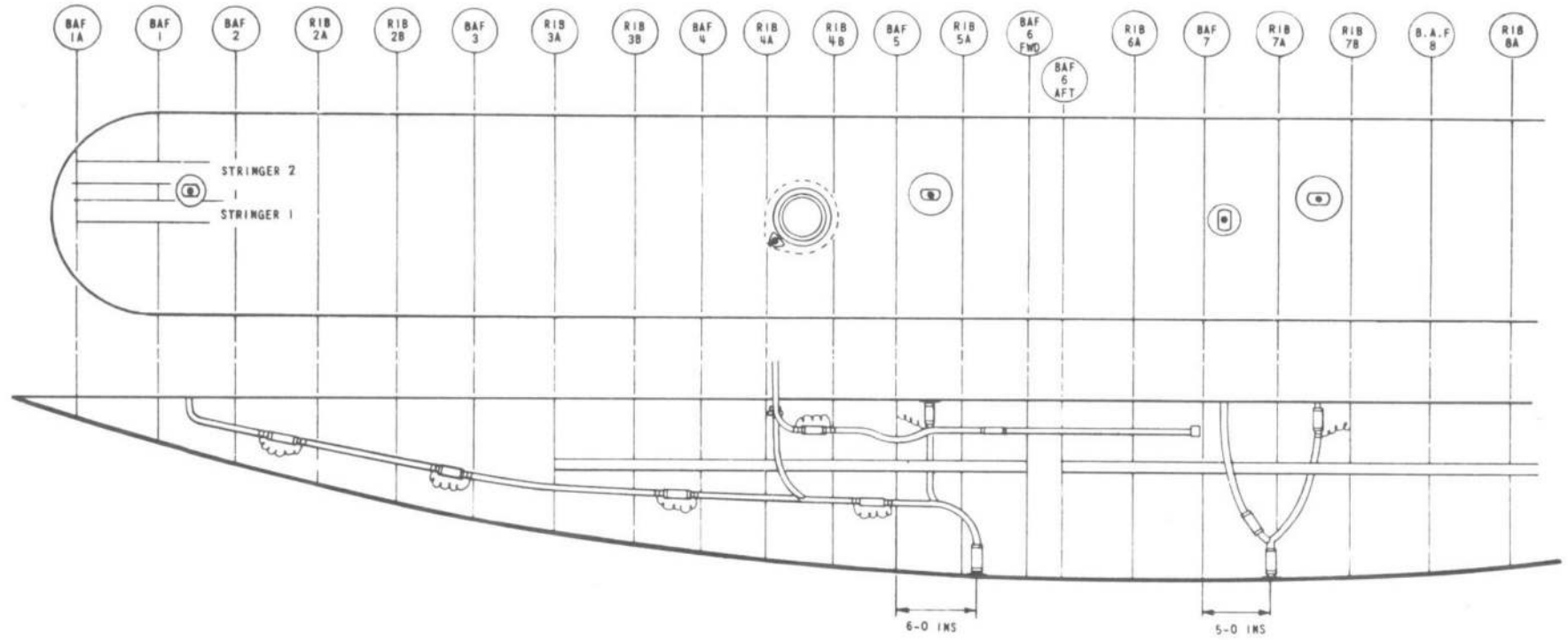
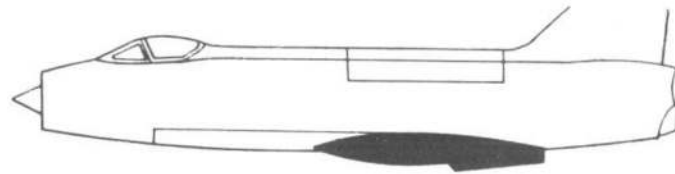
RESTRICTED

AIR DIAGRAM-MIN

101B-1001-MD4B SHEET 5

BY COMMAND OF THE DEFENCE COUNCIL FOR USE IN THE ROYAL AIR FORCE

ISSUE 1 Prepared by MOD/Pl.



TYPICAL IDENTIFICATION MARKING TO BE APPLIED TO REAR FUSE DRAINS



YELLOW CIRCLE AROUND DRAIN HOLES IN TOP AND BOTTOM SKIN SURFACE

FIG.21. VENTRAL TANK (MK.1A)

AIR DIAGRAM-MIN
 101B-1001-MD4B SHEET 6
 BY COMMAND OF THE DEFENCE COUNCIL FOR USE IN THE
 ROYAL AIR FORCE
 ISSUE 1 Prepared by MOD/PEI



This file was downloaded
from the RTFM Library.
Link: www.scottbouch.com/rtfm
Please see site for usage terms,
and more aircraft documents.

