

Chapter I GENERAL INFORMATION

LIST OF CONTENTS

	Para.
◀ DESCRIPTION	
General	1 ▶
Location of equipment	2

LIST OF ILLUSTRATIONS

	Fig.
Location diagrams	
Instrument locations - cockpit ...	1
Instrument equipment - port side...	2-2A
Instrument equipment - starboard side	3-3A
Instrument equipment in wings ...	4

DESCRIPTION

General

1. This chapter contains descriptive and location information applicable to all chapters in Sect.7 and now includes the following modifications:-

◀ Mod.1564 To interchange positions of Tacan indicator and rate of climb indicator.

Mod.1809 To introduce hydraulic services pressure gauge in cockpit.

Mod.2062 To introduce holder for spare filament for pilot's attack sight.

Mod.4398 To introduce 165 knot pressure switch in lieu of 150 knot pressure switch. ▶

Except for Chapter 6 which covers miscellaneous instruments, the chapters which constitute Section 7 each deal with a particular group of instruments under their functional headings. The power supplies for the electrically-operated instruments are described in Sect.6, Chap.4 and 13.

Location of equipment

2. All indicating instruments, except the fatigue meter, are mounted on panels and consoles in the cockpit (*fig.1*). They are arranged where possible, in functional groups. Those associated with flying and navigation are on the port and main instrument panels, whilst the engine instruments are on the starboard panel. Armament and photographic units are grouped on the coaming panel, and several instruments and controls are fitted on the starboard console. General location diagrams are given in this chapter, while detailed location illustrations are included in the individual chapters.



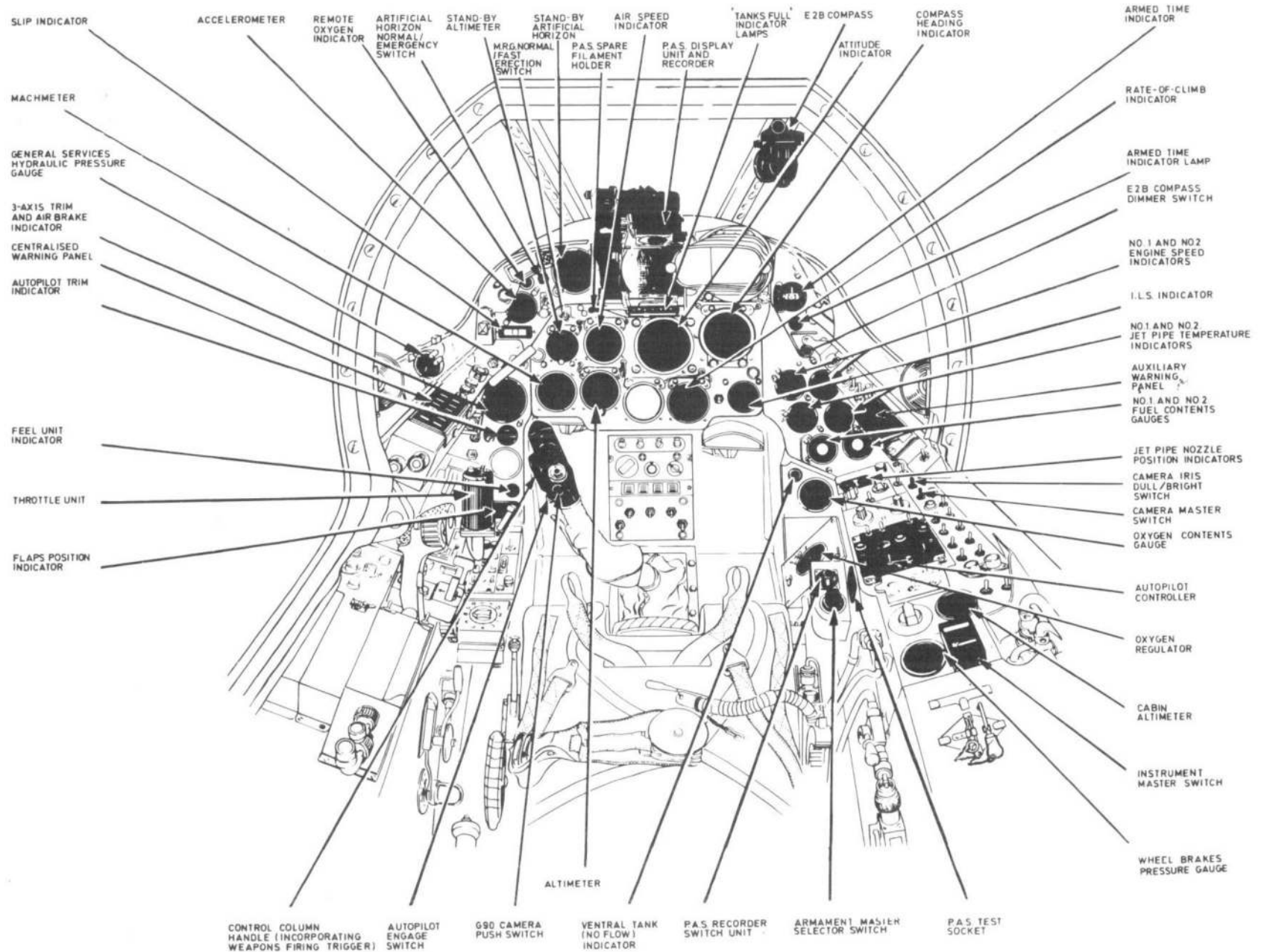
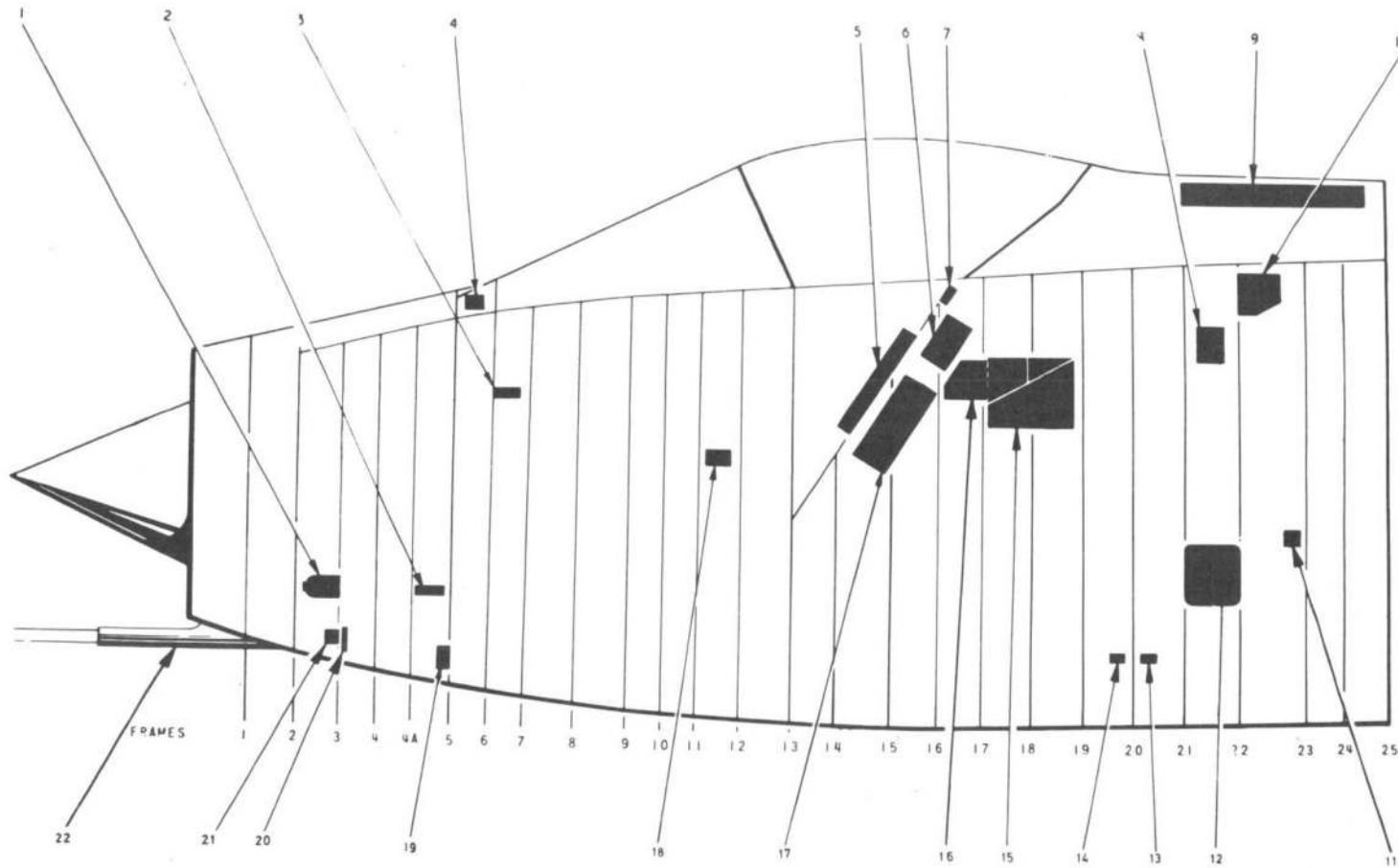


FIG. 1. INSTRUMENT LOCATIONS-COCKPIT
◀ MODS 1564, 1809, 2062, EMBODIED ▶

RESTRICTED

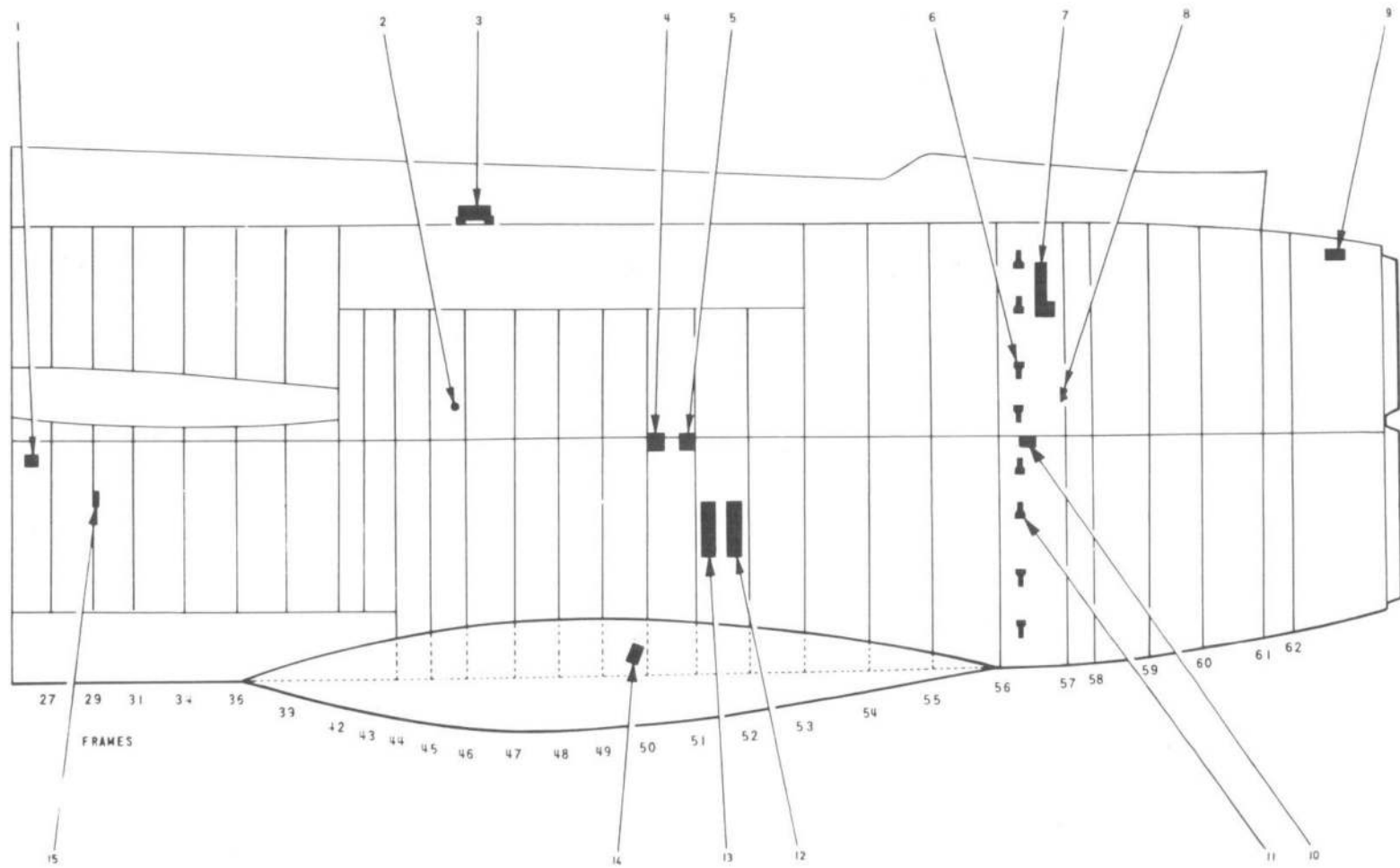


KEY		
1 G90 CAMERA	5 DISPLAY UNIT CONTROLLER	9 A C FUSE AND RELAY BOX
2 CAMERA TEST PANEL	6 COMPASS AMPLIFIER	10 A C DISTRIBUTION BOX
3 PRESSURE CONTROLLER, TYPE C	7 M.G. TEST SOCKET	11 No 2 POWER CONTROLS
4 J.B. 3	8 FUEL GAUGE AMPLIFIER	12 AUTOPILOT GYRO UNIT
		13 GENERAL SERVICES HYDRAULIC PRESSURE TRANSMITTER
		14 WHEEL BRAKES PRESSURE TRANSMITTER
		15 M.R.G. UNIT
		16 M.R.G. DISTRIBUTION BOX
		17 AUTOPILOT COMPUTER
		18 THROTTLE ACTUATOR
		19 10-WAY TERMINAL BLOCK
		20 PITOT AND STATIC DRAIN TRAPS
		21 10-WAY TERMINAL BLOCK
		22 PRESSURE HEAD

FIG. 2. INSTRUMENT EQUIPMENT-PORT SIDE

◀MINOR AMENDMENTS▶

RESTRICTED

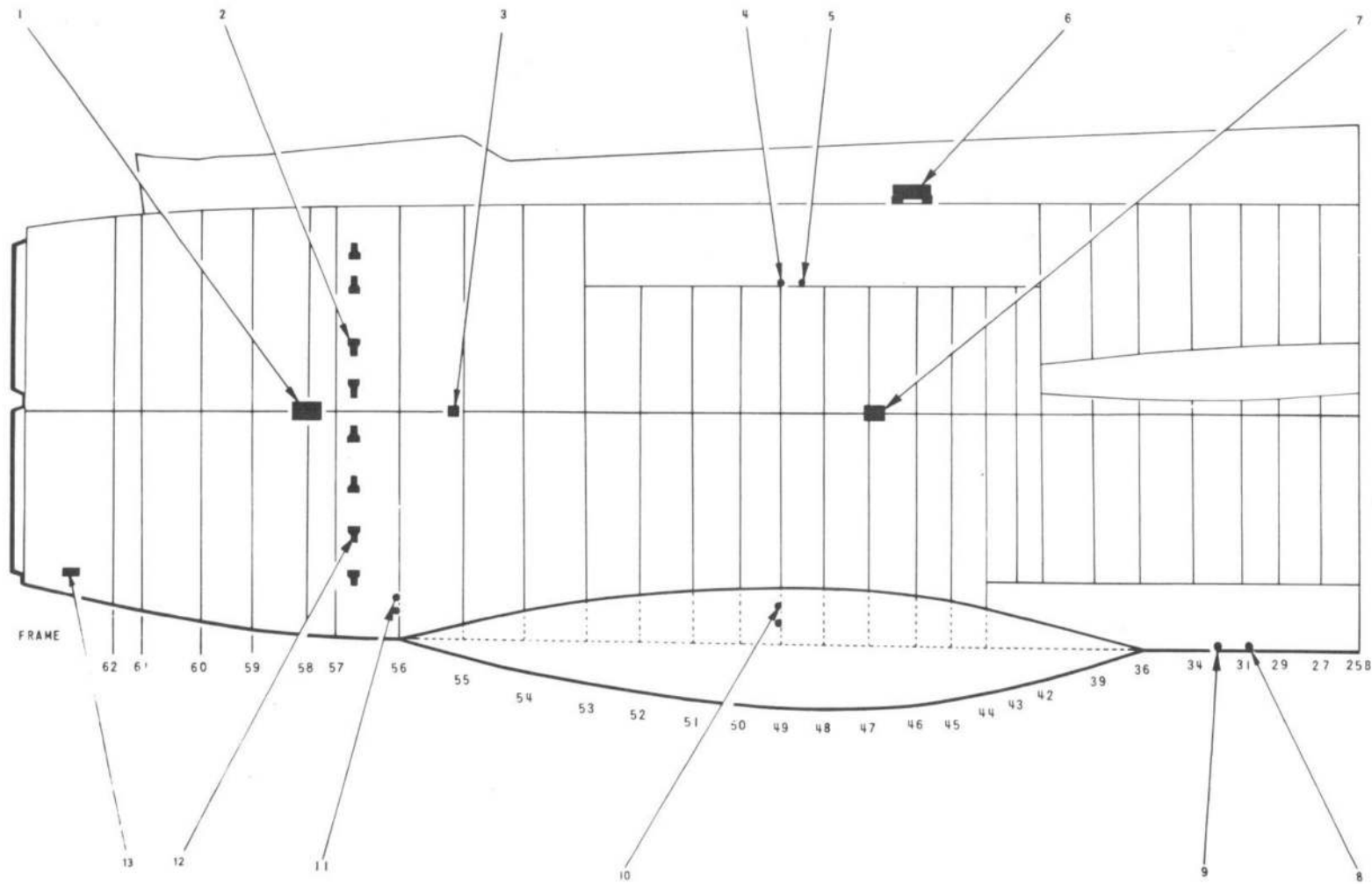


KEY			
1	NO 1 POWER CONTROLS HYDRAULIC PRESSURE WARNING SWITCH	4	NO 2 ENGINE TEMPERATURE CONTROL AMPLIFIER
2	NO 2 ENGINE FUEL PRESSURE WARNING SWITCH	5	NO 1 ENGINE TEMPERATURE CONTROL AMPLIFIER
3	AUTOPILOT THROTTLE ACTUATOR AMPLIFIER	6	JET PIPE TEMPERATURE THERMO-COUPLES
		7	RUDDER AUTOSTABILIZER ACTUATOR
		8	NO 1 & 2 ENGINE JET PIPE TEMPERATURE TEST PLUGS
		9	NO 2 ENGINE JET PIPE NOZZLE POSITION TRANSMITTER UNIT
		10	MACH PRESSURE SWITCH
		11	JET PIPE TEMPERATURE THERMO-COUPLES
		12	RUDDER AUTOSTABILIZER AMPLIFIER
		13	TAILPLANE AUTOSTABILIZER AMPLIFIER
		14	TAILPLANE AUTOSTABILIZER ACTUATOR
		15	NO 1 ENGINE FUEL PRESSURE WARNING SWITCH

FIG. 2A. INSTRUMENT EQUIPMENT-PORT SIDE

◀ MINOR AMENDMENTS ▶

RESTRICTED

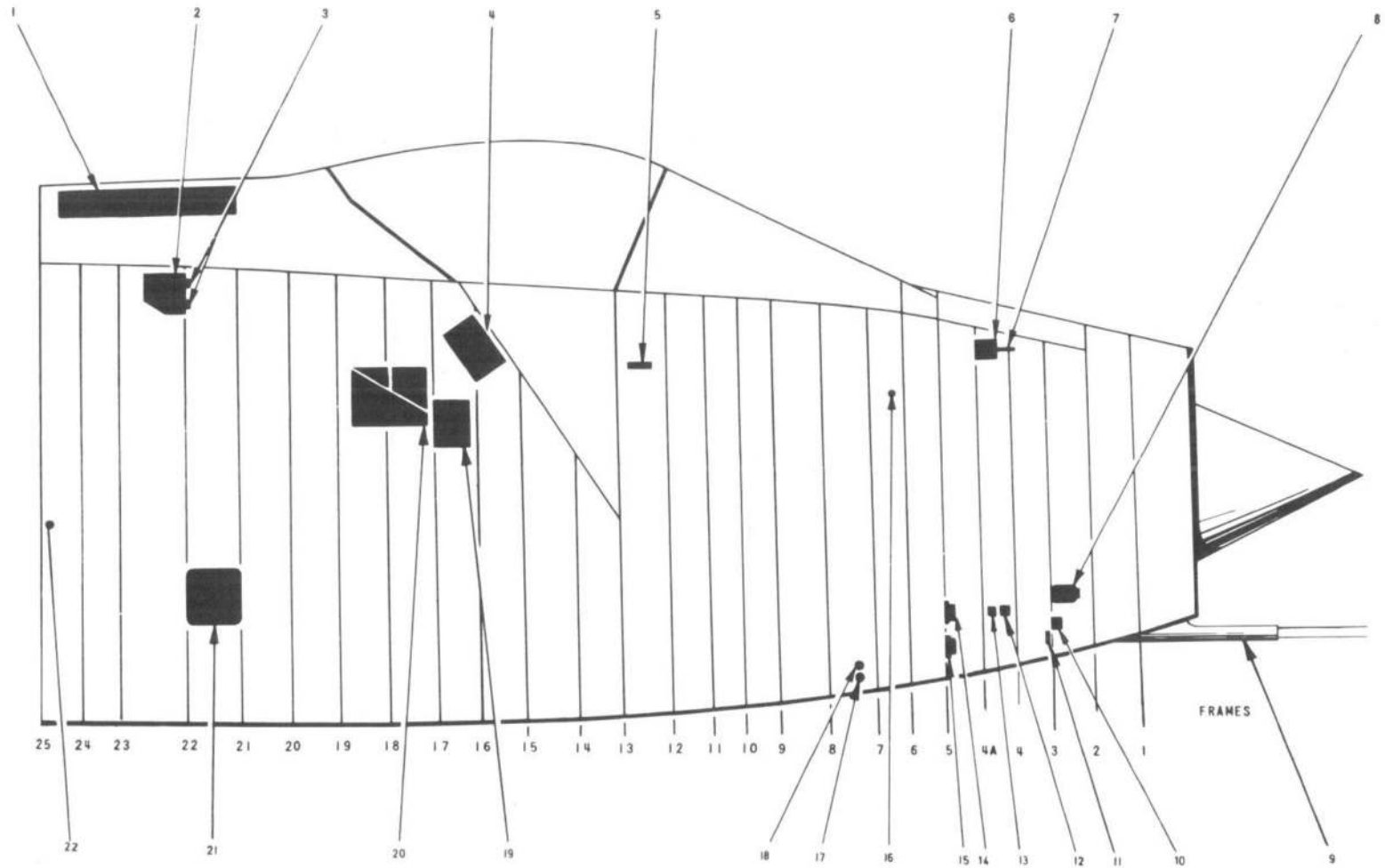


KEY		
1 FEEL SIMULATOR UNIT	5. No 2 ENGINE OIL PRESSURE WARNING SWITCH	10. PITOT AND STATIC DRAIN TRAPS
2 JET PIPE TEMPERATURE THERMO-COUPLES	6. AUTOPILOT THROTTLE ACTUATOR AMPLIFIER	11. PITOT AND STATIC DRAIN TRAPS
3 No 2 POWER CONTROLS HYDRAULIC PRESSURE WARNING SWITCH	7. FATIGUE METER	12. JET PIPE TEMPERATURE THERMO-COUPLES
4 No 2 ENGINE SPEED GENERATOR	8. No 1 ENGINE OIL PRESSURE WARNING SWITCH	13. No 1 ENGINE JET PIPE NOZZLE POSITION TRANSMITTER UNIT
	9. No 1 ENGINE SPEED GENERATOR	

FIG.3. INSTRUMENT EQUIPMENT- STARBOARD SIDE

◀ MINOR AMENDMENTS ▶

RESTRICTED



KEY		
1 AC FUSE AND RELAY BOX	5 PAS TEST SOCKET	10 10-WAY TERMINAL BLOCK
2 AC DISTRIBUTION BOX	6 PAS RECORDER CONTROL UNIT	11 PITOT AND STATIC DRAIN TRAP
3 No 1 & No 2 ENGINE JET PIPE TEMPERATURE SERVO POTENTIOMETERS	7 ALTITUDE AND AIRSPEED UNIT	12 ALTITUDE SWITCH
4 COMPASS AMPLIFIER	8 G90 CAMERA	13 350-KNOT PRESSURE SWITCH
	9 PRESSURE HEAD	14 165-KNOT PRESSURE SWITCH
		15 250-KNOT PRESSURE SWITCH
		16 PITOT AND STATIC DRAIN TRAP
		17 PITOT AND STATIC DRAIN TRAP
		18 PITOT AND STATIC DRAIN TRAP
		19 AUTOSTABILIZER AMPLIFIERS (ROLL)
		20 MRG UNIT
		21 AUTOPILOT GYRO UNIT
		22 PITOT AND STATIC DRAIN TRAP

FIG.3A. INSTRUMENT EQUIPMENT-STARBOARD SIDE

◀ MOD 4398 EMBODIED ▶

RESTRICTED

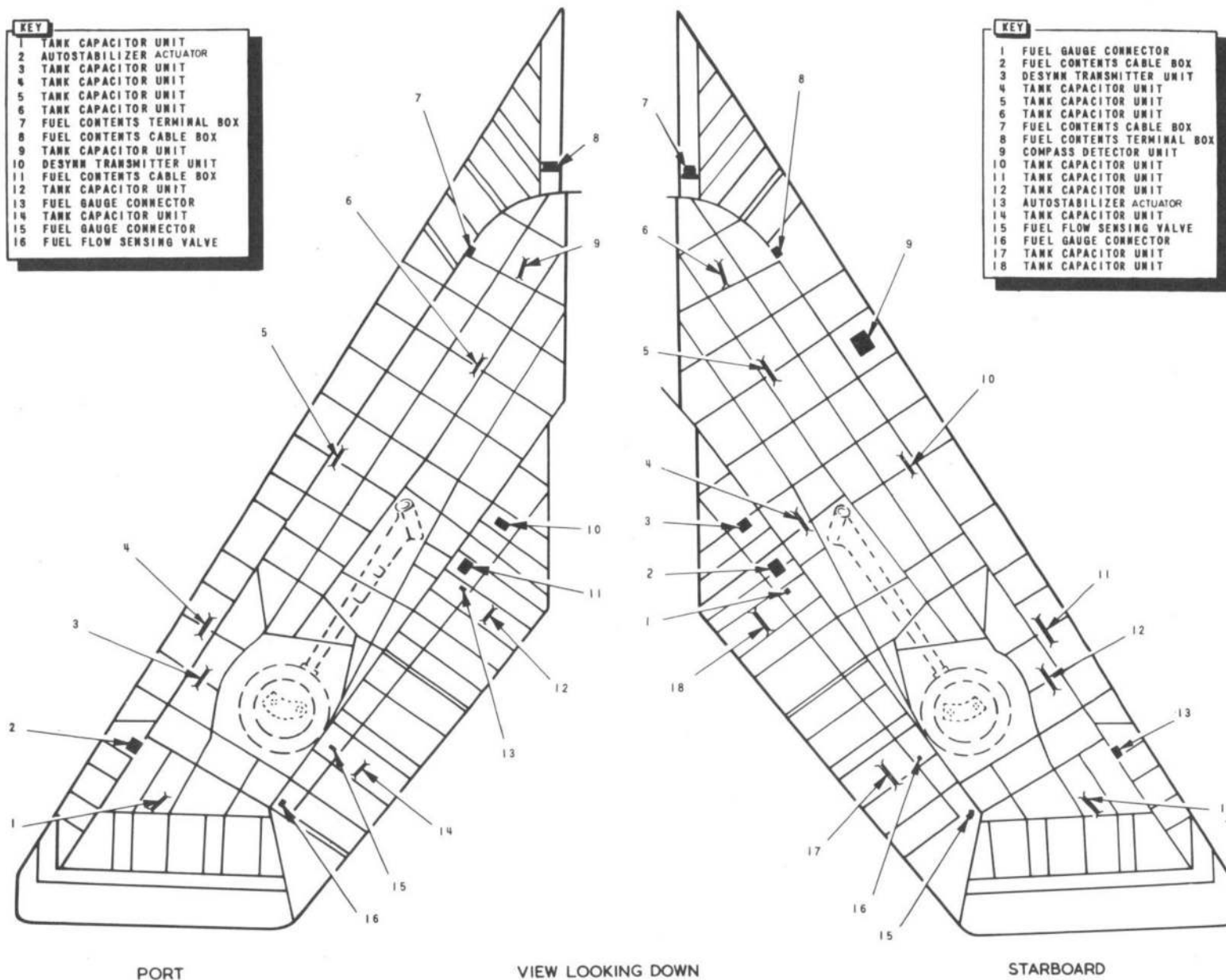


FIG. 4. INSTRUMENT EQUIPMENT IN WINGS

◀MINOR AMENDMENTS▶

RESTRICTED

This file was downloaded
from the RTFM Library.

Link: www.scottbouch.com/rtfm

Please see site for usage terms,
and more aircraft documents.

