

Chapter I GENERAL INFORMATION

LIST OF CONTENTS

	<i>Para.</i>
<i>Introduction</i>	<i>1</i>

LIST OF TABLES

	<i>Table</i>
<i>Access to equipment</i>	<i>1</i>

LIST OF ILLUSTRATIONS

	<i>Fig.</i>
◀ <i>Radar equipment-locations</i> ▶	<i>1</i>
<i>Radar controls</i>	<i>2</i>

WARNING

The relevant safety precautions detailed on the LETHAL WARNING marker card must always be observed before entering the cockpit or performing any operations upon the aircraft. ▶

Emission of microwave radiation from the radome constitutes a hazard to personnel working within a radius of 20 feet forward of the radome.

Radar tradesmen must ensure that a semi-circular area of 25 feet radius in front of the aircraft is roped off and that KEEP CLEAR notices are displayed prior to and during testing of the radar equipment in the radome.

On no account must the A. I. radar equipment be switched on inside the hangar as this may cause damage to the receiver unit.

Introduction

1. This section deals with the Tacan, I.F.F. and AI 23 radar systems, the main components of which are illustrated on fig.1 and 2 in this chapter. Instal-

lation details of the three systems are described in subsequent chapter of this section. The chapters contain schematic diagrams and illustrations of non-standard connectors where applicable.

TABLE 1

Access to equipment

Item	Access panel
TACAN transmitter-receiver, Type 9171	21P
I.F.F. aerial switch unit	69P
I.F.F. transmitter-receiver ▶▶	87P

RESTRICTED

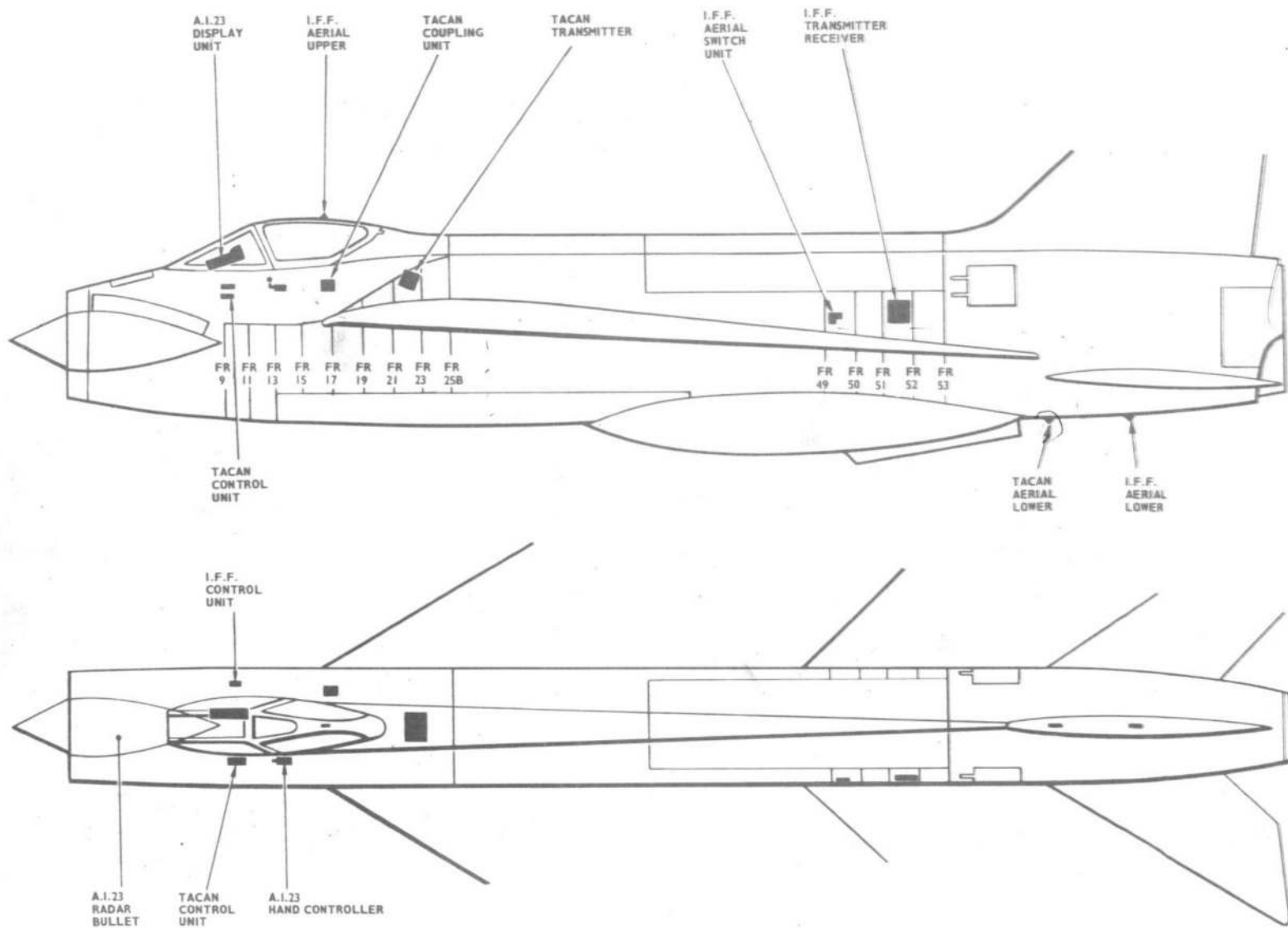


FIG. 1. RADAR EQUIPMENT - LOCATIONS

◀ MODS 1556, 4499 ADDED ▶

RESTRICTED

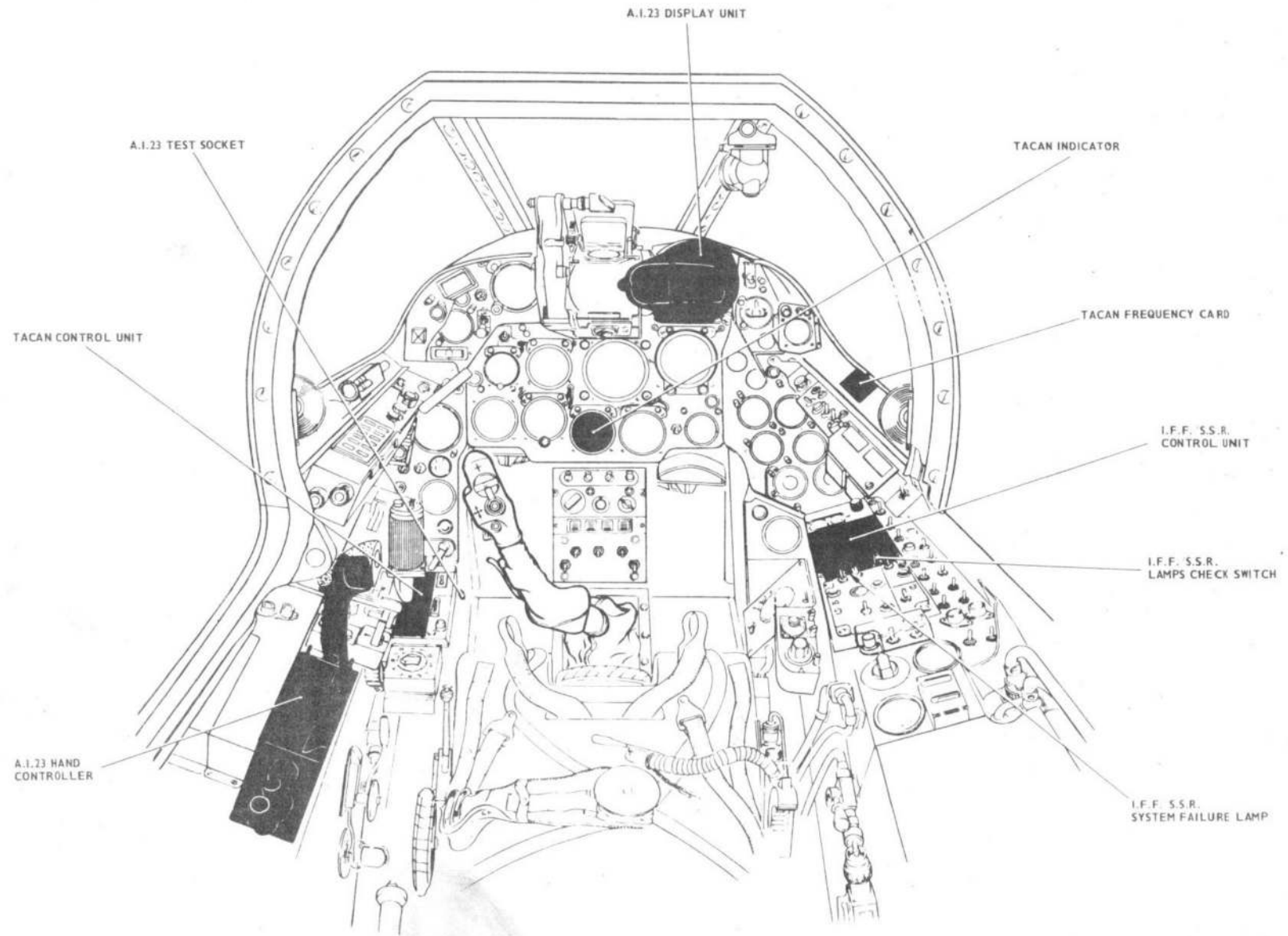


FIG. 2. RADAR CONTROLS

◀ MODS. 1556, 1544, 4499 INCORPORATED ▶



This file was downloaded
from the RTFM Library.

Link: www.scottbouch.com/rtfm

Please see site for usage terms,
and more aircraft documents.

