

the power supplies to the equipment, selecting the appropriate channel, receiving bearing or distance and bearing information, and adjusting the volume of the identity tone fed to the pilot's headset. Two miniature lamps incorporated in the control unit illuminate the channel indicator numbers and the lettering on the face plate. Details of the associated lighting circuit are given in Sect. 6, Chap. 8.

Indicator electrical, Type 9547

5. This indicator, mounted on the main instrument panel, presents continuous bearing and distance indications. The bearing pointer has a continuous 360 deg travel and the arrow head indicates the bearing of the beacon from the aircraft. The distance of the aircraft from the beacon is shown in a window in the dial of the instrument and is rated in nautical miles.

Aerial

6. An omni-directional aerial is fitted on the underside of the fuselage between frames 59 and 60. Connection to the aerial is via a coaxial plug and socket.

Power supplies

7. The Tacan system requires power supplies of 28V d.c. and 115V single phase a.c. Details of the supply circuits are given in Sect. 6, Chap. 11.

SERVICING

WARNING

The relevant safety precautions detailed on the LETHAL WARNING marker card must always be observed before entering the cockpit or performing any operations upon the aircraft.

General

8. The equipment units and cables should

be inspected periodically for security and freedom from damage. Details of the procedure for dismantling and assembling the sub-units of the transmitter/receiver and instructions for setting up and servicing the various items are given in A.P. 1168-0304-1.

Power supply circuit

9. When investigating faults or making continuity tests on the supply circuit to the Tacan installation, reference should be made to the routing diagram in Sect. 6, Chap. 11.

Functional tests

10. In addition to the normal operational tests and continuity checks, the installation should be functionally tested at the intervals laid down in Vol. 4 of this publication. Full details of the tests and the test equipment used can be found in A.P. 116B-0304-1, Sect. 3, Chap. 1.

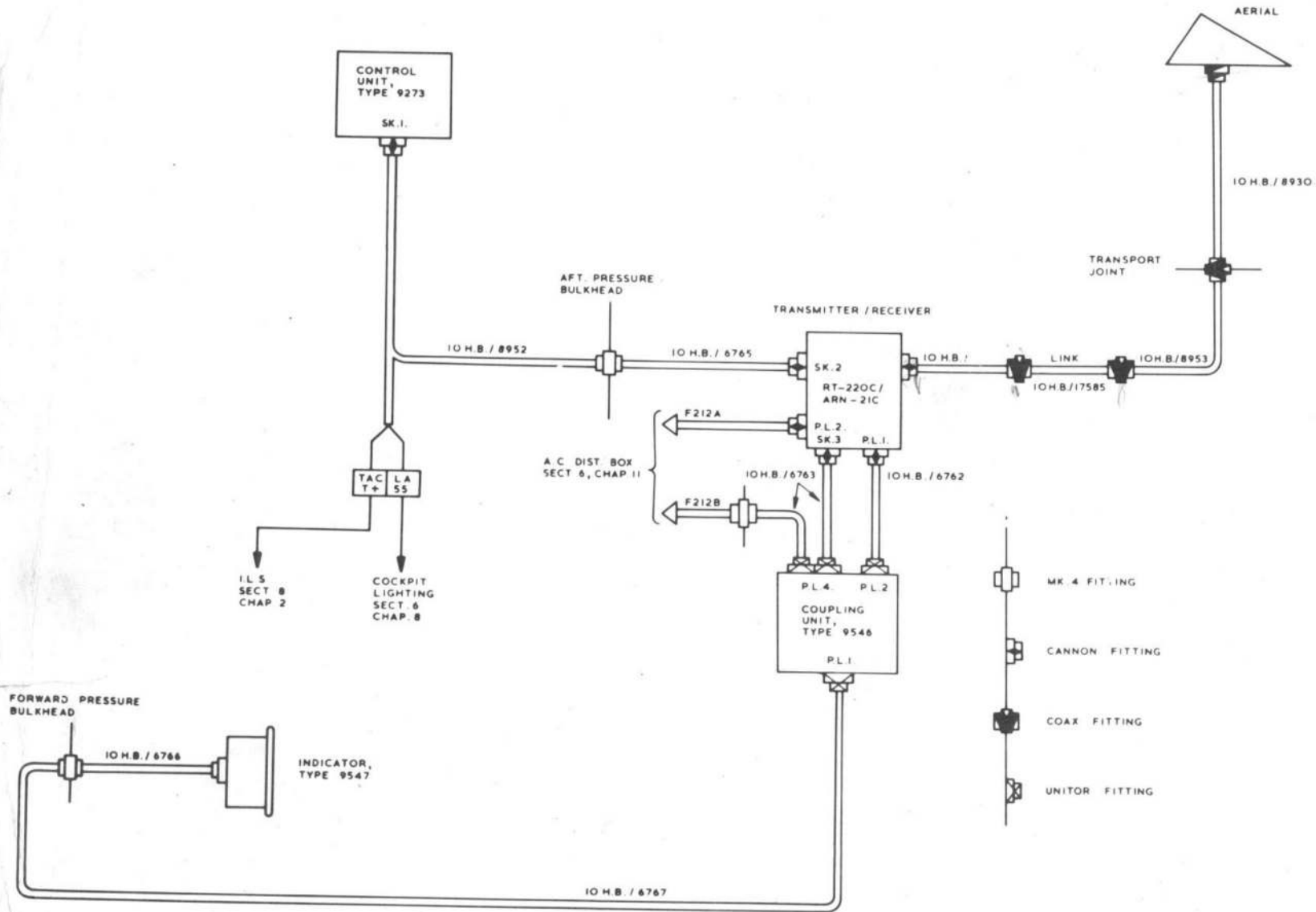


FIG.2. TACAN CIRCUIT DIAGRAM

◀ MOD. 1556 ADDED ▶

This file was downloaded
from the RTFM Library.

Link: www.scottbouch.com/rtfm

Please see site for usage terms,
and more aircraft documents.

