

SHACKLETON Mk 2

ELECTRICAL INSTALLATION

Page 177

BOMB BAY

Ref. No.	Part No.	Description				No. off	Matl. Spec.	Cl. of St.	Plate and Illust'n No.
		1	2	3	4			M.R.	
		ELECTRICAL ASSEMBLIES							
		Spares for :—							
		BOMB FUSING AND RELEASE WIRING IN BOMB BAY, UNDER FLOOR (V5965)							
		Spares for :—							
5CZ/432	—	Block, terminal at former 9 (Mod. 690) ...				1	—	B	
5CZ/430	—	Block, terminal at formers 4 & 9 ...				2	—	B	
5CZ/868	—	Block, terminal, at formers 4 & 9 ...				2	—	B	
13942	35V4529	Bolt, special for channel cover ...				2	—		17/1
	1SS3867	Bracket, support channel, between formers 5 & 6				1	—	C	17/2
5523	31V5965	Bracket, plug at floor beam 9 ...				1	L72	C	
	715V5630	CABLE, FRONT CENTRE SECTION B.S.1, GROUP				1	—		
	716V5630	CABLE, FRONT CENTRE SECTION B.S.3, GROUP				1	—		
	729V5630	CABLE, FRONT CENTRE SECTION B.S.5, GROUP				1	—		
	717V5630	CABLE, FRONT CENTRE SECTION B.S.7, GROUP				1	—		
	450V5630	CABLE, FRONT CENTRE SECTION B.S.9 GROUP				1	—		
	718V5630	CABLE, FRONT CENTRE SECTION B.S.9A, GROUP				1	—		
	719V5630	CABLE, FRONT CENTRE SECTION B.S.11, GROUP				1	—		
	87V5630	CABLE, FRONT CENTRE SECTION F.110, GROUP				1	—		
	956V5630	CABLE, CENTRE SECTION B.S.13, GROUP				1	—		
	454V5630	CABLE, CENTRE SECTION B.S.15, GROUP				1	—		
	721V5630	CABLE, CENTRE SECTION B.S.15A, GROUP (Pre.Mod. 690)				1	—		
	1193V5630	CABLE, CENTRE SECTION, GROUP (Mod. 690)				1	—		
	456V5630	CABLE, CENTRE SECTION B.S.15B, GROUP				1	—		
	958V5630	CABLE, CENTRE SECTION B.S.17, GROUP				1	—		
	723V5630	CABLE, REAR CENTRE SECTION B.S.19, GROUP				1	—		
	724V5630	CABLE, REAR CENTRE SECTION B.S.21, GROUP				1	—		
	725V5630	CABLE, REAR CENTRE SECTION B.S.23, GROUP				1	—		
	726V5630	CABLE, REAR CENTRE SECTION B.S.25, GROUP				1	—		
	727V5630	CABLE, REAR CENTRE SECTION B.S.26, GROUP				1	—		
	728V5630	CABLE, REAR CENTRE SECTION B.S.29, GROUP				1	—		
	1097V5630	CABLE, GROUP (Mod. 690) ...				1	—		
	1099V5630	CABLE, GROUP (Mod. 690) ...				1	—		

ELECTRICAL INSTALLATION

BOMB BAY

Ref. No.	Part No.	Description				No. off	Matl. Spec.	Cl. of St.	Plate and Illust'n No.
		1	2	3	4			M.R.	
		BOMB FUSING AND RELEASE WIRING IN BOMB BAY, UNDER FLOOR (V5965) (Cont'd)							
	32V5965	CAP, PLUG SEALING, AT FORMER 9, GROUP				1	—		
	8V5965	Channel, cable between formers C & E ...				1	L72		17/3
13062	1SS3264	Clip, for cable 1 $\frac{5}{16}$ " dia. ...				1	L72	C	
13309	17SS3264	Clip, for cable 1 $\frac{5}{16}$ " dia. ...				4	L72	C	
13925	19SS3264	Clip, for cable 1 $\frac{7}{16}$ " dia. ...				6	L72	C	
13899	28SS3264	Clip, for cable, 2" dia....				2	L72	C	
13569	26SS3264	Clip, for cable, 1 $\frac{7}{8}$ " dia. ...				2	L72		
13071	2SS3315	Clip, for cable, elongated ...				2	DTD275	C	
13395	1SS3266	Clip, bracket, $\frac{3}{8}$ " dia. ...				9	DTD275	C	
13099	5SS3266	Clip, bracket, $\frac{3}{8}$ " dia. ...				2	DTD275	C	
13070	1SS3315	Clip, for cable, elongated ...				1	DTD275	C	
13098	1SS3339	Clip, bracket, 0.35" dia. R.H. ...				10	DTD275	C	
13900	2SS3339	Clip, bracket, 0.35" dia. L.H. ...				9	DTD275	C	
7268	1SS3512	Clip, bracket, $\frac{3}{8}$ " dia. ...				7	DTD275		
13726	3SS3512	Clip, bracket, $\frac{3}{8}$ " dia. ...				4	DTD275	C	
13715	5SS3512	Clip, bracket, $\frac{3}{8}$ " dia. ...				3	DTD275	C	
	33V5965	Clip, for cable, insulated ...				3	L72		
	34V5965	Clip, for cable, insulated ...				4	L72		
13928	23SS3264	Clip, for cable, 1 $\frac{1}{16}$ " dia. ...				1	L72	C	
13084	20SS3264	Clip, for cable, 1 $\frac{1}{2}$ " dia. ...				8	L72	C	
13108	9SS3264	Clip, for cable, $\frac{1}{8}$ " dia. ...				3	L72	C	
	6V4529	Clip, strap, at floor beam 9 ...				1	L72		
	8V4529	Clip, spring at floor beam 9 ...				1	Spring St.		
	9V5965	Cover, channel ...				1	—		17/4
	58V4529	Cradle, for channel ...				2	L72		17/5
	42V4529	Guard, cable, on front and rear spar webs...				2	BSS668		17/6
	9V4529	Plate, mounting, terminal block ...				1	L72		17/7
	29V5965	PLUG, STOWAGE, AFT OF FLOOR BEAM 9, GROUP				3	—		
		Consisting of :—							
	HELLERMAN HV3327	Bung, water sealing ...				1	—		
5X/2120	—	Ferrule, inner ...				1	—	C	
5X/2113	—	Ferrule, outer ...				1	—	C	
	PLESSEY Z23197	Gasket, plug moulding ...				2	—	C	
	29aV5965	Link, shorting, unipren 6 x 3.5" ...				1	—		
5X/3248	—	Nut, coupling ...				1	—	C	
5X/285	—	Shroud, plug ...				1	—	C	
5X/3148	—	Sleeve, adaptor ...				2	—	C	
	—	Sleeve, re-inforcing (Hellerman—AP) ...				1	—		

SHACKLETON Mk. 2

**ELECTRICAL INSTALLATION
NOSE PORTION**

Ref. No.	Part No.	Description				No. off	Matl. Spec.	Cl. of St.	Plate and Illust'n No.
		1	2	3	4			M.R.	
		ELECTRICAL INSTALLATION IN FUSE-LAGE NOSE PORTION (V5927)							
		Spares for :—							
5X/9402802	—	Block , terminal, on trough support angle and former "F"				3	—	C	
5X/9402147	—	Block , terminal				2	—	C	
5X/9402803	—	Block , terminal, T.B. 264, on plug panel between formers E & F... ..				1	—	C	
	24V5630	CABLE, F1, TROUGH, TO FORMER "F", GROUP				1	—		
	25V5630	CABLE, F2, TROUGH, TO FORMER "F", GROUP				1	—		
	963V5630	CABLE, F3, TROUGH, TO T.B's. 299 & 516 GROUP				1	—		
	27V5630	CABLE, F4, TROUGH, TO FORMER "F", GROUP				1	—		
	30V5630	CABLE, F5, TROUGH, TO PILOT'S PANEL, GROUP				1	—		
	964V5630	CABLE, F6, TROUGH, TO PILOT'S PANEL, GROUP (Mod. 771)				1	—		
	37V5630	CABLE, F7, TROUGH, TO FORMER "F", GROUP				1	—		
	32V5650	CABLE, F8, TROUGH, TO FORMER "F" GROUP				1	—		
	28V5630	CABLE, F9, TROUGH, TO PILOT'S PANEL, GROUP (Pre.Mod. 660)				1	—		
	1004V5630	CABLE, F9, TROUGH, TO PILOT'S PANEL, GROUP (Mod. 660)				1	—		
	29V5630	CABLE, F.10, TROUGH, TO FORMER "F", GROUP				1	—		
	1277V5630	CABLE, F.11, TROUGH TO PILOT'S PANEL, GROUP (Mod. 771)				1	—		
	34V5630	CABLE, F.12, TROUGH, TO FORMER "F", GROUP				1	—		
	687V5630	CABLE, F.38, TROUGH, TO FORMER "F", GROUP				1	—		
	45V5630	CABLE, F.51, PRE-SELECTOR PANEL TO BOMB AIMER'S PANEL, GROUP				1	—		
	46V5630	CABLE, F.52, PRE-SELECTOR PANEL TO BOMB AIMER'S PANEL, GROUP				1	—		

SHACKLETON Mk. 2

Page 180

ELECTRICAL INSTALLATION

NOSE PORTION

Ref. No.	Part No.	Description				No. off	Matl. Spec.	Cl. of St.	Plate and Illust'n No.
		1	2	3	4			M.R.	
	44V5630	CABLE, F.53, PRE-SELECTOR PANEL TO BOMB AIMER'S PANEL, GROUP				1	—		
	532V5630	CABLE, F.56, BOMB AIMER'S PANEL TO EARTH, GROUP				1	—		
	1217V5630	CABLE, F.151, No. 1 FLARE CHUTE TO SUPPRESSOR PANEL, GROUP (Mod. 771)				1	—		
	476V5630	CABLE, F.153, T.B.268 TO EARTH, GROUP				1	—		
	478V5630	CABLE, F.154, T.B.268 TO No. 1 DOOR ACTUATOR, GROUP				1	—		
	482V5630	CABLE, F.155, T.B.268 TO No. 1 FLARE CHUTE, GROUP				1	—		
	1206V4530	CABLE, F.1377, T.B.547 TO DIMMER SWITCH, GROUP (Mod. 771)				1	—		
	1209V5630	CABLE, F.1380, T.B.547 TO EARTH, GROUP (Mod. 771)				1	—		
	1234V5630	CABLE, F.1393, T.B.552 TO CIRCUIT BREAKER, GROUP (Mod. 771)				1	—		
	1235V5630	CABLE, F.1394, T.B.552 TO EARTH, GROUP (Mod. 771)				1	—		
	706V5630	CABLE, F.361, No. 1 HEATER PANEL TO HEATER DUCT, GROUP				1	—		
	588V5630	CABLE, F.458, T.B. 270 TO T.B.264, GROUP				1	—		
	1219V5630	CABLE, F.465, GROUP (Mod. 771) ...				1	—		
	651V5630	CABLE, F.507, LAMP TO T.B.279 AND FUSE, GROUP				1	—		
	318V5630	CABLE, F.509, FWD. TURRET TO T.B.297 AND EARTH, GROUP				1	—		

SHACKLETON Mk. 2

ELECTRICAL INSTALLATION
NOSE PORTION

Page 181

Ref. No.	Part No.	Description				No. off	Matl. Spec.	Cl. of	Plate and Illust'n No.
		1	2	3	4			St. M.R.	
14296	393V5630	CABLE, F.683, BOMB AIMER'S W.F.A. TO NAVIGATOR'S W.F.A., GROUP				1	—		
	788V5630	CABLE, F.772, BOOST COIL TO No. 1 HEATER, GROUP				1	—	B	
	41V5630	CABLE, F.817, BOMB AIMER'S PANEL TO PRE-SELECTOR PANEL, GROUP				1	—		
	1055V5630	CABLE, F.818, BOMB AIMER'S PANEL TO PRE-SELECTOR PANEL, GROUP				1	—		
	746V5630	CABLE, F.833, BOMB AIMER'S W.F.A. TO NAVIGATOR'S W.F.A., GROUP				1	—		
	577V5630	CABLE, F.162 & F.163, TO T.B.264, FUSE & EMER. ACCUMULATOR, GROUP				1	—		
	569V5630	CABLE, F.165 & F.200, TO T.B.264 AND FUSE, GROUP				1	—		
	883V5630	CABLE, F.853, BOMB AIMER'S PANEL TO FORMER 22, GROUP				1	—		
	815V5630	CABLE, F.866, T.B.147 & FUSE TO SUPPRESSOR, GROUP				1	—		
	379V5630	CABLE, F.868, No. 1 HEATER PANEL TO EQUIPMENT, GROUP				1	—		
	314V5630	CABLE, F.873, 878 & 879, T.B.878 TO T.B.'s 142, 143 & 298 AND FUSE, GROUP				1	—		
	319V5630	CABLE, F.874 & F.875, FWD. TURRET TO SUPPRESSOR, GROUP				1	—		
	334V5630	CABLE, F.876 & F.877, FWD. TURRET TO SUPPRESSOR, GROUP				1	—		
	351V5630	CABLE, F.901, CONTROL PANEL TO CONTROL BOX, GROUP				1	—		
	995V5630	CABLE, F.1169, B.A.'s PANEL TO T.B.529, GROUP				1	—		
	1186V5630	CABLE, F.1201, J.B. TO CONTROL BOX, GROUP (Mod. 674)				1	—		
1188V5630	CABLE, F.1202, J.B. TO 1st PILOT'S INDICATOR, GROUP (Mod. 674)				1	—			
1189V5630	CABLE, F.1203, J.B. TO 2nd PILOT'S INDICATOR, GROUP (Mod. 674)				1	—			

ELECTRICAL INSTALLATION
NOSE PORTION

Ref. No.	Part No.	Description				No. off	Matl. Spec.	Cl. of St.	Plate and Illust'n No.
		1	2	3	4			M.R.	
	770V5630	CABLE, F.906, CONTROL PANEL TO EARTH, GROUP				1	—		
	297V5630	CABLE, F.925, BETWEEN CRASH SWITCHES, GROUP				1	—		
	1220V5630	CABLE, F.962 & F.992, BOMB AIMER'S PANEL TO FLARE CHUTE AND EARTH, GROUP (Mod. 771)				1	—		
	1278V5630	CABLE, F.1450, DIMMER SWITCH TO FUSE, GROUP (Mod. 821)				1	—		
6A/3695	—	Cable, thermometer				1	—	B	
	8V3449	Cleat, cable, between formers E & F ...				3	—		
13234	3SS3628	Cleat, ignition cable, between formers E & F...				6	—	C	
5X/9402796	—	Cover, terminal block				3	—	C	
5X/9402795	—	Cover, terminal block				2	—	C	
5X/9402794	—	Cover, terminal block				1	—	C	
	8V5927	Fairlead, half				2	BSS668		
	3V5927	Fairlead, half, on cable trough side ...				2	BSS668		
5K/32	—	Ferrule, cut, at suppressor, forward ...				1	—	C	
5X/335	—	Ferrule, cut, at suppressor, aft ...				1	—	C	
13337	17SS3529	Grommet, on starboard plug panel ...				2	—	C	
2615	20SS3529	Grommet				1	—	C	
	25SS3529	Grommet				1	—	C	
13930	13SS3529	Grommet				2	—	C	
13233	11SS3529	Grommet, forward of former "J" ...				2	—	C	
13669	3SS3530	Grommet, split, at former "F" ...				3	—	C	
5X/9402800	—	Link, commoning				2	—	C	
		MOUNTING, LAMP, IN GUNNER'S CANOPY (1V5721)							
		Spares for :—							
5CX/720	—	Dome, glass				1	—	A	17/17
5L/9953319	—	Filament				1	—	B	17/18
5CX/701	—	Lamp				1	—	A	17/19
	2V5721	SUPPORT, LAMP, GROUP				1	—		17/20
		Spares for :—							
3379	SS4039	Fastener				4	—	C	
13233	11SS3529	Grommet				1	—	C	17/21
	1V5802	PANEL, BOMB AIMER'S LAMP, GROUP (See Instrument Panels)				1	—		
	1V8866	PANEL, ELECTRICAL, BELOW FLOOR, GROUP (See Instrument Panels)				1	—		
	1V9511	PANEL, HEATER CONTROL, GROUP (See Instrument Panels)				1	—		
5X/9994577	—	Socket, for terminal blocks				11	—	C	
5X/9402799	—	Socket, for terminal blocks				5	—	C	

SHACKLETON Mk 2

**ELECTRICAL INSTALLATION
FRONT CENTRE PORTION**

Page 183

Ref. No.	Part No.	Description				No. off	Matl. Spec.	Cl. of St.	Plate and Illust'n No.
		1	2	3	4			M.R.	
		ELECTRICAL INSTALLATION, IN FUSELAGE FRONT CENTRE PORTION (V5735)							
		Spares for :—							
5H/9402802	—	Block, terminal, 2-way, at formers E & Z ...				2	—	C C C B	
5H/2	—	Block, terminal, 3-way ...				3	—		
5H/9402803	—	Block, terminal, 5-way, at former C ...				2	—		
5CZ/430	—	Block, terminal, 2-way, below pilots floor, port, and former 1				2	—		
	799V5630	CABLE, F.820, T.B.296 TO CIRCUIT BREAKER, GROUP				1	—		
	493V5630	CABLE, F.391, W/T OPS. PANEL TO SUPPLY PANEL, GROUP				1	—		
	494V5630	CABLE, F.392, TO T.B.182, GROUP ...				1	—		
	492V5630	CABLE, F.393, TO T.B.182, GROUP ...				1	—		
	741V5630	CABLE, F.199, T.B.270 TO STARBOARD TRIM. LT., GROUP				1	—		
	408V5630	CABLE, F.284, BOMB DIST. TO T.B. 131, GROUP				1	—		
	287V5630	CABLE, F.286, T.B. 130 TO T.B.101, GROUP				1	—		
	775V5630	CABLE, F.700, T.B.297 TO CIRCUIT BREAKER, GROUP				1	—		
	662V5630	CABLE, F.294, T.B.130 TO T.B.101, GROUP				1	—		
	802V5630	CABLE, F.888, T.B.298 TO POWER PANEL, GROUP				1	—		
	288V5630	CABLE, F.376, POWER PANEL TO T.B. 178 IN GALLEY, GROUP				1	—		
	290V5630	CABLE, F.378, POWER PANEL TO T.B. 177 IN GALLEY, GROUP				1	—		
	298V5630	CABLE, F.865, T.B.150 TO EARTH, GROUP				1	—		
	302V5630	CABLE, F.860, T.B.266 TO RELAY, GROUP				1	—		
	312V5630	CABLE, F.708, T.B.233 TO SWITCH AT RADAR STATION, GROUP				1	—		
	323V5630	CABLE, F.897, SWITCH ON ENG. PANEL TO CIRCUIT BREAKER ON POWER PANEL, GROUP				1	—		
	331V5630	CABLE, F.674, MASTER INDICATOR TO AMPLIFIER, GROUP				1	—		

**ELECTRICAL INSTALLATION
FRONT CENTRE PORTION**

Ref. No.	Part No.	Description				No. off	Matl. Spec.	Cl. of St.	Plate and Illust'n No.
		1	2	3	4			M.R.	
5234	333V5630	CABLE, F.677, AMPLIFIER TO CONTROL PANEL, GROUP				1	—		
	335V5630	CABLE, F.682, MASTER INDICATOR TO AMPLIFIER, GROUP				1	—	B	
	337V5630	CABLE, F.678, MASTER INDICATOR TO DISTRIBUTION BOX, GROUP				1	—		
	338V5630	CABLE, F.680, CONTROL PANEL TO 1st PILOT'S GYRO, GROUP				1	—		
	339V5630	CABLE, F.681, CONTROL PANEL TO 2nd PILOT'S GYRO, GROUP				1	—		
	355V5630	CABLE, F.701, T.B.211 TO EARTH, GROUP				1	—		
	320V5630	CABLE, F.777, SOLENOID VALVE IN BOMB BAY TO EARTH AT FORMER 6, GROUP				1	—		
	389V5630	CABLE, F.691, A.P. INDICATOR TO DISTRIBUTION BOX, GROUP				1	—		
	395V5630	CABLE, F.695, TO TRANSMITTER AT NAV'S STATION, GROUP				1	—		
	409V5630	CABLE, F.643, NAV'S PANEL TO PRE-SELECTOR PANEL, GROUP				1	—		
	410V5630	CABLE, F.644, NAV'S PANEL TO PRE-SELECTOR PANEL, GROUP				1	—		
	411V5630	CABLE, F.645, NAV'S PANEL TO PRE-SELECTOR PANEL, GROUP				1	—		
	412V5630	CABLE, F.646, NAV'S PANEL TO PRE-SELECTOR PANEL, GROUP				1	—		
	413V5630	CABLE, F.882, T.B.210 TO T.B.249, GROUP				1	—		
	415V5630	CABLE, F.656, PRES. PANEL TO POWER PANEL, GROUP				1	—		
	416V5630	CABLE, F.55, PRES. PANEL TO POWER PANEL, GROUP				1	—		
	418V5630	CABLE, F.113, T.B.147 TO EARTH, GROUP				1	—		
	510V5630	CABLE, F.655, POWER PANEL TO HTR. SWITCH ON NAV'S PANEL, GROUP				1	—		
	520V5630	CABLE, F.702, C.O. SWITCH TO FORMER 2, GROUP				1	—		
	526V5630	CABLE, F.726, NAV'S PANEL TO FORMER 2, GROUP				1	—		
538V5630	CABLE, F.112, T.B.147 TO EARTH, GROUP				1	—			

SHACKLETON Mk. 2

**ELECTRICAL INSTALLATION
FRONT CENTRE PORTION**

Page 185

Ref. No.	Part No.	Description				No. off	Matl. Spec.	Cl. of St.	Plate and Illust'n No.
		1	2	3	4			M.R.	
	583V5630	CABLE, F.358, T.B.133 TO T.B.270, GROUP				1	—		
	584V5630	CABLE, F.204, T.B.271 TO T.B.264, GROUP				1	—		
	587V5630	CABLE, F.203, T.B.133 TO EARTH, GROUP				1	—		
	588V5630	CABLE, F.458, T.B.270 TO T.B.264, GROUP				1	—		
	601V5630	CABLE, F.337, AT TRIM LT., STARBOARD, GROUP				1	—		
	602V5630	CABLE, F.202, TRIM LT., TO SWITCH, STARBOARD, GROUP				1	—		
	603V5630	CABLE, F.739, TRIM SWITCH TO FUSE ON A.C. PANEL, STBD., GROUP				1	—		
	604V5630	CABLE, F.166, PORT TRIM SWITCH TO FUSE ON A.C. PANEL, GROUP				1	—		
	609V5630	CABLE, F.195, T.B.271 TO PORT TRIM LT., GROUP				1	—		
	610V5630	CABLE, F.359, T.B.270 TO T.B.271, GROUP				1	—		
	618V5630	CABLE, F.809, ASTRO LIGHT TO T.B.283, GROUP				1	—		
	630V5630	CABLE, F.90, DIMMER SWITCH TO T.B.135, GROUP				1	—		
	632V5630	CABLE, F.353, CIRCUIT BREAKER ON POWER PANEL TO PUMP SWITCH ON ENGINEER'S MAIN PANEL, GROUP				1	—		
	633V5630	CABLE, F.352, CIRCUIT BREAKER ON POWER PANEL TO PUMP SWITCH ON ENGINEER'S MAIN PANEL, GROUP				1	—		
	634V5630	CABLE, F.924, CIRCUIT BREAKER ON POWER PANEL TO PUMP SWITCH ON ENGINEER'S MAIN PANEL, GROUP				1	—		
	636V5630	CABLE, F.350, CIRCUIT BREAKER ON POWER PANEL TO PUMP SWITCH ON ENGINEER'S MAIN PANEL, GROUP				1	—		
	637V5630	CABLE, F.351, CIRCUIT BREAKER ON POWER PANEL TO PUMP SWITCH ON ENGINEER'S MAIN PANEL, GROUP				1	—		
	638V5630	CABLE, F.923, CIRCUIT BREAKER ON POWER PANEL TO PUMP SWITCH ON ENGINEER'S MAIN PANEL, GROUP				1	—		

**ELECTRICAL INSTALLATION
FRONT CENTRE PORTION**

Ref. No.	Part No.	Description				No. off	Matl. Spec.	Cl. of St.	Plate and Illust'n No.
		1	2	3	4			M.R.	
	640V5630	CABLE, F.910, DIMMER SWITCH TO FUSE & T.B.279 ON A.C. PANEL, GROUP				1	—		
	646V5630	CABLE, F.205, DIMMER SWITCH TO T.B. 135, GROUP				1	—		
	647V5630	CABLE, F.206, LAMP TO T.B.135, GROUP				1	—		
	648V5630	CABLE, F.532, T.B.135 TO T.B.133, GRP.				1	—		
	649V5630	CABLE, F.43, TROUGH TO No's 1, 2 & 3 BOOST SWITCHES, GROUP				1	—		
	659V5630	CABLE, F.476, T.B.102 TO T.B.131, GROUP				1	—		
	661V5630	CABLE, F.705, FUSE TO T.B.210, GROUP				1	—		
	663V5630	CABLE, F.296, BETWEEN DOOR SWITCHES, BOMB BAY, GROUP				1	—		
	665V5630	CABLE, F.660, CIRCUIT BREAKER AT POWER PANEL "A" TO FUSE AT FORMER 2, GROUP				1	—		
	666V5630	CABLE, F.407, CIRCUIT BREAKER AT POWER PANEL "A" TO FUSE BETWEEN FORMERS 12 & 13, GROUP				1	—		
	668V5630	CABLE, F.928, CIRCUIT BREAKER AT POWER PANEL TO FUSE AT FORMER "E", GROUP				1	—		
	675V5630	CABLE, F.224, T.B.171 TO EARTH AT FORMER 6, GROUP				1	—		
	711V5630	CABLE, F.996, T.B.171 TO T.B.150, GROUP				1	—		
	712V5630	CABLE, F.389, T.B.291 TO EARTH, GROUP				1	—		
	713V5630	CABLE, F.390, T.B.291 TO EARTH, GROUP				1	—		
	731V5630	CABLE, F.340, TO T.B.'s 174 & 238 IN BOMB BAY, GROUP				1	—		
	779V5630	CABLE, F.305, T.B.238 TO EARTH, GROUP				1	—		
	847V5630	CABLE, F.763, CONTROL UNIT TO T.B. 296, GROUP				1	—		
	880V5630	CABLE, F.955, PRE-SELECTOR PANEL TO FORMER 22, GROUP				1	—		

SHACKLETON Mk. 2

ELECTRICAL INSTALLATION
FRONT CENTRE PORTION

Page 187

Ref. No.	Part No.	Description				No. off	Matl. Spec.	Cl. of St.	Plate and Illust'n No.
		1	2	3	4			M.R.	
	934V5630	CABLE, F.187, OXYGEN REG. LAMP TO DIMMER SWITCH, GROUP				1	—		
	936V5630	CABLE, F.207, DIMMER SWITCH TO T.B.135, GROUP				1	—		
	951V5630	CABLE, F.632, CIRCUIT BREAKER AT POWER PANEL TO MUFF. HEATING SWITCH, GROUP				1	—		
	954V5630	CABLE, F.638, INDICATOR TO BOMB GEAR J.B., GROUP				1	—		
	985V5630	CABLE, F.1034, FUSE ON POWER PANEL TO RELAY ON A.C. SUPPLY PANEL, GROUP (Mod. 674)				1	—		
	996V5630	CABLE, F.1170, T.B.529 TO SWITCH ON CANOPY CONTROL BOX, GROUP (Mod. 645)				1	—		
	997V5630	CABLE, F.1171, T.B.529 TO SWITCH ON NAV'S BOMB PANEL, GROUP (Mod. 645)				1	—		
	999V5630	CABLE, F.1173, SWITCH ON NAV'S. BOMB PANEL TO FLAME FLOAT EJECTOR, GROUP				1	—		
	1044V5630	CABLE, F.1224, T.B.490 TO FUSE ON RADAR SWITCH PANEL, GROUP (Mod. 674)				1	—		
	1045V5630	CABLE, F.1225, T.B.490 TO EARTH, GROUP (Mod. 674)				1	—		
	1079V5630	CABLE, F.41, PRES. PANEL TO TROUGH, GROUP (Mod. 674)				1	—		
	1086V5630	CABLE, F.1226, G.4.B. DISTRIBUTION BOX TO T.B.490, GROUP (Mod. 674)				1	—		
	1091V5630	CABLE, F.1091, CIRCUIT BREAKER No. 15 TO CONTROL BOX, GROUP (Mod. 674)				1	—		
	1095V5630	CABLE, F.1231, 100A INVERTER SWITCH TO C.B.15, GROUP (Mod. 674)				1	—		
	1096V5630	CABLE, F.1000, MUFF SOCKET, STBD., TO BOMB GEAR J.B., GROUP				1	—		
	1100V5630	CABLE, F.1236, RELAY AT FORMER 1 TO T.B.171, GROUP (Mod.690)				1	—		
	1101V5630	CABLE, F.1237, C.B.'s 5 & 12 TO RELAY, GROUP (Mod. 690)				1	—		
	1102V5630	CABLE, F.1240, RELAY AT FORMER 1 TO MUFF SWITCH AT NAV'S. PANEL, GROUP (Mods. 689 & 690)				1	—		
	1103V5630	CABLE, F.1241, RELAY AT FORMER 1 TO BOMB GEAR J.B., GROUP (Mod. 689)				1	—		

**ELECTRICAL INSTALLATION
FRONT CENTRE PORTION**

Ref. No.	Part No.	Description	No. off	Matl. Spec.	Cl. of St.	Plate and Illust'n No.
					M.R.	
		1 2 3 4				
	1104V5630	CABLE, F.1242, T.B.283 TO EARTH, GROUP (Mod. 674)	1	—		
	1105V5630	CABLE, F.1243, FOR DIMMER SWITCH, GROUP (Mod. 674)	1	—		
	1106V5630	CABLE, F.1244, T.B.283 TO DIMMER SWITCH, GROUP (Mod. 674)	1	—		
	1107V5630	CABLE, F.1245, T.B.214 TO DIMMER SWITCH, GROUP (Mod. 674)	1	—		
	1108V5630	CABLE, F.1246, T.B.214 TO T.B.283, GROUP (Mod. 674)	1	—		
	1109V5630	CABLE, F.805, T.B.214 TO DIMMER SWITCH, GROUP (Mod. 674)	1	—		
	1110V5630	CABLE, F.806, T.B.283 TO DIMMER SWITCH, GROUP (Mod. 674)	1	—		
	1111V5630	CABLE, F.807, T.B.283 TO DIMMER SWITCH, GROUP (Mod. 674)	1	—		
	1112V5630	CABLE, F.810, T.B.283 TO FUSE, GROUP (Mod. 674)	1	—		
	1113V5630	CABLE, F.7111, FUSE BOX "AB" TO DIMMER SWITCH, GROUP (Mod. 674)	1	—		
	1114V5630	CABLE, F.1232, RELAY AT FORMER 1 TO BOMB BAY J.B., GROUP (Mod. 689)	1	—		
	1120V5630	CABLE, F.1252, SUPPRESSOR TO FUSES ON BULKHEAD, FORMER 2, GROUP (Mod. 674)	1	—		
	1121V5630	CABLE, F.1253, J.B. TO TACT. NAV'S. G.P.I., GROUP (Mod. 674)	1	—		
	1122V5630	CABLE, F.1254, J.B. TO ROUTINE NAV'S. G.P.I., GROUP (Mod. 674)	1	—		
	1123V5630	CABLE, F.1255, W.F.A. TO J.B., GROUP (Mod. 674)	1	—		
	1124V5630	CABLE, F.1256, BETWEEN JUNCTION BOXES, GROUP (Mod. 674)	1	—		
	1125V5630	CABLE, F.1257, A.M.U. TO J.B., GROUP (Mod. 674)	1	—		
	1126V5630	CABLE, F.1258, J.B. TO A.P.I., GROUP (Mod. 674)	1	—		
	1127V5630	CABLE, F.1259, J.B. TO SUPPRESSOR, GROUP (Mod. 674)	1	—		

SHACKLETON Mk. 2

ELECTRICAL INSTALLATION
FRONT CENTRE PORTION

Page 189

Ref. No.	Part No.	Description				No. off	Matl. Spec.	Cl. of St.	Plate and Illust'n No.
		1	2	3	4			M.R.	
	1128V5630	CABLE, F.1260, A.P.I. TO J.B., GROUP (Mod. 674)				1	—		
	1129V5630	CABLE, F.1261, J.B. TO EARTH, GROUP (Mod. 674)				1	—		
	1130V5630	CABLE, F.1262, J.B. TO SUPPRESSOR, GROUP (Mod. 674)				1	—		
	1131V5630	CABLE, F.1263, A.M.U. TO J.B., GROUP (Mod. 674)				1	—		
	1132V5630	CABLE, F.1264, TRANSPORT PLUG TO J.B., GROUP (Mod. 674)				1	—		
	1146V5630	CABLE, F.1278, No. 1 SHUNT TO FUSE, GROUP (Mod. 674)				1	—		
	1147V5630	CABLE, F.1279, No. 2 SHUNT TO FUSE, GROUP (Mod. 674)				1	—		
	1148V5630	CABLE, F.1280, No. 3 SHUNT TO FUSE, GROUP (Mod. 674)				1	—		
	1149V5630	CABLE, F.1281, No. 4 SHUNT TO FUSE, GROUP				1	—		
	1178V5630	CABLE, F.725, T.B.210 TO EARTH, GROUP (Mod. 674)				1	—		
	1420V5630	CABLE, F.1205, FLIGHT COMPUTOR TO COURSE SELECTOR, GROUP (Mod. 988)				1	—		
	1418V5630	CABLE, F.1203, FLIGHT COMPUTOR TO J.B., GROUP (Mod. 988)				1	—		
	1423V5630	CABLE, F.1208, FLIGHT COMPUTOR TO CONTROL BOX, GROUP (Mod. 988)				1	—		
	1419V5630	CABLE, F.1204, FLIGHT COMPUTOR TO CONTROL PANEL, GROUP (Mod. 988)				1	—		
	1421V5630	CABLE, F.1206, FLIGHT COMPUTOR TO I.L.S. J.B., GROUP (Mod. 988)				1	—		
	1422V5630	CABLE, F.1207, FLIGHT COMPUTOR TO G.H.B. AMPLIFIER, GROUP (Mod. 988)				1	—		
	1404V5630	CABLE, F.1375, AD.712, A.D.F. SUPPLIES FORMER F, TO POWER STN. (Mod. 988)				1	—		
	1215V5630	CABLE, F.40, TROUGH AT FORMER "C" TO FLARE CHUTE, T.B.'s 268, 296 & 560, GROUP (Mod. 771) (May be made from 1299V5630 with removal of F.329 & F.951 and re-wiring pins L & M).				1	—		
	1216V5630	CABLE, F.45, TROUGH TO FORMER 22, GROUP (Mod. 771) (May be made from 434V5630)				1	—		

ELECTRICAL INSTALLATION
FRONT CENTRE PORTION

Ref. No.	Part No.	Description				No. off	Matl. Spec.	Cl. of St.	Plate and Illust'n No.
		1	2	3	4			M.R.	
	1221V5630	CABLE, F.131, T.B.135 TO FUSE, GROUP (Mod. 771)				1	—		
	1223V5630	CABLE, F.1386, DIMMER SWITCH TO FUSE, GROUP (Mod. 771)				1	—		
	1224V5630	CABLE, F.1387, J.B.559 TO FUSE, GROUP (Mod. 771)				1	—		
	1225V5630	CABLE, F.1388 & F.1389 WIRELESS OPS. PANEL PLUG 1 TO C.B.'s 7 & 13, GROUP (Mod. 771)				1	—		
	1226V5630	CABLE, F.390, F.391 & F.392, W/T OPS. PANEL PLUG 2 TO T.B.'s 233 & 510 AND EARTH, GROUP (Mod. 771)				1	—		
	1246V5630	CABLE, F.1404, T.B.271 TO EARTH, GROUP (Mod. 771)				1	—		
	1293V5630	CABLE, F.1425, T.B.135 TO T.B.559, GROUP (Mod. 771)				1	—		
	1298V5630	CABLE, F710, T.B.233 TO ASTRO SOCKET, GROUP (Mod. 771)				1	—		
	1430V5630	CABLE, F.1556, AD.712 LIGHTING, DIMMER SWITCH TO DIM. SWITCH (Mod. 988)				1	—		
	158V7467	CABLE, F.1095, J.B.214 TO LAMP, GROUP				1	—		
	159V7467	CABLE, F.1096, J.B.214 TO LAMP, GROUP				1	—		
	165V7467	CABLE, F.1102, DIMMER SWITCH TO PANEL LAMP, GROUP				1	—		
	167V7467	CABLE, F.1104, DIMMER SWITCH TO PANEL LAMP, GROUP				1	—		
	169V7467	CABLE, F.1106, BETWEEN PANEL LAMPS, GROUP				1	—		
	170V7467	CABLE, F.1107, BETWEEN PANEL LAMPS, GROUP				1	—		
	172V7467	CABLE, F.1109, BETWEEN PANEL LAMPS, GROUP				1	—		
	11V5735	Cleat, cable, below pilot's floor at former " E "				6	BSS668		
13134	1SS706	Clip, $\frac{1}{4}$ " dia. x $\frac{5}{8}$ " wide				15	L59	C	
13904	2SS706	Clip, $\frac{3}{8}$ " dia. x $\frac{5}{8}$ " wide on fairlead 17V5735 ...				3	L59	C	
13150	14SS706	Clip, $\frac{3}{16}$ " dia. x $\frac{5}{8}$ " wide				8	L59	C	
13107	3SS3264	Clip, $\frac{7}{16}$ " dia. on fairleads 17V5735				5	L72	C	
13620	6SS3264	Clip, $\frac{3}{8}$ " dia. for cable to power panel				6	L72	C	

SHACKLETON Mk. 2

ELECTRICAL INSTALLATION
FRONT CENTRE PORTION

Ref. No.	Part No.	Description				No. off	Matl. Spec.	Cl. of St.	Plate and Illust'n No.
		1	2	3	4			M.R.	
13905	7SS3264	Clip, $\frac{1}{16}$ " dia. at former " E ", port ...				2	L72	C	
13093	8SS3264	Clip, $\frac{1}{8}$ " dia. at former 2 bulkhead, top ...				3	L72	C	
13109	10SS3264	Clip, $\frac{1}{8}$ " dia. at former 2 bulkhead, top ...				2	L72	C	
13924	14SS3264	Clip, $\frac{1}{8}$ " dia. below heater duct, port and aft face of former " E " below floor				3	L72	C	
13898	15SS3264	Clip, $1\frac{3}{16}$ " dia. on former 3 ...				3	L72	C	
13084	20SS3264	Clip, $1\frac{1}{2}$ " dia. ...				1	L72	C	
13374	22SS3264	Clip, $1\frac{5}{8}$ " dia. at former " E ", below T.B.'s and below heater duct, port				4	L72	C	
13569	26SS3264	Clip, $1\frac{7}{8}$ " dia. on underside of i/c panel support beam, former 5				1	L72	C	
13183	24SS3264	Clip, $1\frac{3}{4}$ " dia. at pre-selector panel ...				1	L72	C	
13070	1SS3315	Clip, elongated, below pilots floor ...				6	DTD275	C	
13071	2SS3315	Clip, elongated, at power panel " A " ...				1	DTD275	C	
13072	3SS3315	Clip, 0.165" dia. ...				8	DTD275	C	
13094	4SS3315	Clip, 0.195" dia. below earth 8 at former 3 and below shelf at former 2 bulkhead				6	DTD275	C	
13095	5SS3315	Clip, 0.176" dia. for use with 4SS3315 ...				6	DTD275	C	
13581	6SS3315	Clip, elongated, on former 4, top ...				4	DTD390	C	
13584	4SS3329	Clip, flanged, 0.176" dia. ...				1	DTD390	C	
13906	6SS3329	Clip, flanged, 0.195" dia. for cable through former 4, top, port				1	DTD390	C	
13927	2SS3638	Clip, flanged, $\frac{17}{32}$ " dia. RH ...				1	L59	C	
	3SS3638	Clip, flanged, $\frac{17}{32}$ " dia. LH ...				1	L59	C	
13922	6SS3638	Clip, flanged, $\frac{33}{32}$ " dia. RH ...				1	L59	C	
	7SS3638	Clip, flanged, $\frac{15}{16}$ " dia. LH ...				1	L59	C	
	12SS3638	Clip, flanged, 1.477" dia. RH ...				1	L59	C	
5162	3SS3865	Clip, elongated, below A.P.I. ...				2	DTD390	C	
	2bSS4205	Clip, insulated, $\frac{3}{16}$ " dia. at A.M.U. ...				5	—	C	
26DC/4311	6bSS4205	Clip, insulated, $\frac{5}{16}$ " dia. on angle at former 4, port				1	—	C	
	16bSS4205	Clip, insulated, $\frac{15}{16}$ " dia. on fairleads 3V5199 at former 2b/h				2	—	C	
	18bSS4205	Clip, insulated, $1\frac{1}{8}$ " dia. on fairleads 17V5735 ...				3	—	C	
26DC/9475	2SS4657	Clip, insulated, $\frac{3}{16}$ " dia. ...				4	—	C	
26DC/11471	4SS4657	Clip, insulated, $\frac{1}{4}$ " dia. ...				4	—	C	
	6SS4657	Clip, insulated, $\frac{5}{16}$ " dia. for cable to T.B.233 ...				8	—	C	
26DC/10683	12SS4657	Clip, insulated, $\frac{11}{16}$ " dia. on former 2 bulkhead, port				9	—	C	
5X/9402796	—	Cover, 2-way terminal block ...				2	—	C	
5X/9402794	—	Cover, 5-way terminal block ...				1	—	C	
	28V5735	Fairlead, at navigator's footstep (Mod. 988) ...				1	—	C	

ELECTRICAL INSTALLATION
FRONT CENTRE PORTION

Ref. No.	Part No.	Description				No. off	Matl. Spec.	Cl. of St.	Plate and Illust'n No.
		1	2	3	4			M.R.	
	1V7199	COVER, CABLE, GROUP (Mod. 524) ...				1	—		
		DUCT, CABLE, STARBOARD (V5666) ...					—		17/22
		Spares for :—							
	12V4534	Block, seating ...				5	BSS668		17/23
5X/9402803	—	Block, terminal ...				13	—	C	
	5V5666	Bolt, special, for delay switches ...				12	S96		17/24
5CZ/758	—	Box, fuse, type C ...				1	—	B	17/25
5CZ/886	—	Box, fuse, type G ...				19	—	B	17/26
	21V5666	BRACKET, PLUG, GROUP ...				1	—		17/27
		Spares for :—							
	85SS6001	Label, " F.858 " ...				1	DTD213		
	22V5666	BRACKET, PLUG, GROUP ...				1	—		17/28
		Spares for :—							
	86SS6001	Label, " F.859 " ...				1	DTD213		
	12V5666	BRACKET, DUCT END, GROUP ...				1	—		
		Spares for :—							
	84SS6001	Label, " P.197, S.200, F.45 " ...				1	DTD213		
	32V5666	CABLE, BUSBAR TO LL-4, GROUP				1	—		
	33V5666	CABLE, BUSBAR TO DD-8, GROUP				1	—		
	34V5666	CABLE, BUSBAR TO AA-1, GROUP				1	—		
	35V5666	CABLE, BUSBAR TO FF-1, GROUP				1	—		
	36V5666	CABLE, BUSBAR TO HH-1, GROUP				1	—		
	37V5666	CABLE, BUSBAR TO KK-1, GROUP				1	—		
	38V5666	CABLE, BUSBAR TO MM-1, GROUP				1	—		
	39V5666	CABLE, BUSBAR TO PP-1, GROUP				1	—		
	40V5666	CABLE, BUSBAR TO AP-1, GROUP				1	—		
	44V5666	CABLE, FUSE TO PLUG, GROUP ...				1	—		
	47V5666	CABLE, BUSBAR TO AL-1, GROUP				1	—		
	9V3645	Cleat, cable loom support ...				6	BSS668		17/29
5X/9401794	—	Cover, terminal blocks ...				13	—	C	
	6V5666	DOOR, HINGED, AFT, CENTRE, GRP.				1	—		17/30
	7V5666	DOOR, HINGED, FORWARD, CENTRE, GROUP				1	—		17/31
	8V5666	DOOR, HINGED, FORWARD, GROUP				1	—		17/32
	13V5666	DOOR, HINGED, AFT, GROUP ...				1	—		17/33
5CZ/879	—	Fuse, 2.5 amp, type " S " (11 spare) ...				24	—	C	
5CZ/880	—	Fuse, 5 amp, type " S " (21 spare) ...				88	—	C	
5CZ/881	—	Fuse, 10 amp, type " S " (6 spare) ...				34	—	C	
5CZ/1255	—	Fuse, 20 amp, type " S " (3 spare) ...				15	—	C	
5CZ/907	—	Fuse, 25 amp, type " S " (2 spare) ...				4	—	C	

**ELECTRICAL INSTALLATION
FRONT CENTRE PORTION**

Ref. No.	Part No.	Description				No. off	Matl. Spec.	Cl. of St.	Plate and Illust'n No.
		1	2	3	4			M.R.	
		DUCT, CABLE, STARBOARD (V5666) (Cont'd)							
	15V5666	MEMBER, TOP, FORWARD, GROUP				1	—		
	562SS6000	Spares for :—							
	33SS6001	Label, " Plug Refs.", etc.				1	DTD213		
		Label, " Plug Refs.", etc.				1	DTD213		
5X/6091	—	Plug, 14 pole, type " C "				78	—	B	
5X/6006	—	Plug, 4 pole, type " A "				4	—	B	
5CY/587	—	Socket, type " A "				6	—	C	
5H/124	—	Socket, single				6	—	C	
5H/9402799	—	Socket, double				32	—	C	
	10V3645	Stud, for cleat				6	S1 & S3		17/34
	8V3645	Support, cable loom				6	BSS668		17/35
27N/56	—	Switch, delay				4	—	A	17/36
5CW/1722	—	Switch, magnetic relay, type " P "				7	—	A	17/37
5CW/2007	—	Switch, magnetic relay, type " Q.1 "				6	—	A	17/38
5CW/4102	—	Switch, magnetic relay, type " Q.3 "				4	—	A	17/39
5CW/3945	—	Switch, relay, type " S.4 "				9	—	A	17/40
6A/1200	—	Unit, resistance				2	—	A	
	22V5735	Fairlead, half, below heater duct between formers 1 and 2				2	BSS668		
	24V5735	Fairlead, half, aft of cable duct on floor at former 4				2	BSS972		
7462	21V5735	FAIRLEAD, 2 PART, ON AFT FACE OF FORMER " E " BULKHEAD, GROUP				4	—	C	
5109	10V5199	FAIRLEAD, 3 PART, BELOW HEATER DUCT FORMERS 1 & 2, GROUP				1	—	C	
	3V5199	FAIRLEAD, 3 PART, ON FORMER 2 BULKHEAD, PORT, GROUP				2	—		
	16V5735	FAIRLEAD, 2 PART, IN CANOPY, GRP.				2	—		
5107	17V5735	FAIRLEAD, 3 PART ON FLOOR AT FORMERS B, C, D & E, GROUP				4	—	C	
5L/260	—	Filament, type " L ", red				1	—	B	
13106	1SS2877	Grommet, cable, at former 2, bottom				1	—	C	
13097	1SS2885	Grommet, on former 2, top				2	—	C	
6871	7V5199	Guard, cable, between formers C and D, port				1	L72	C	
		LAMP, CABIN, IN CANOPY (V5732) Spares for :—							
5L/9953219	—	Filament				1	—	B	17/17
5CX/720	—	Glass, dome				1	—	C	17/18
5CX/701	—	Lamp, cabin				1	—	B	17/19
	2V5732	PANEL, LAMP, GROUP				1	—		17/46
		LAMP & DIMMER SWITCH (V5748) Spares for :—							
5L/9951263	2V5748	Bracket, lamp				1	—		17/41
5CX/4058	—	Filament				1	—	B	17/43
5CX/3414	—	Lamp, cockpit, type " C ", No. 2				1	—	B	17/42
5CX/2453	—	Screen, lamp				1	—	B	17/45
	—	Switch, dimmer				1	—	A	17/44

SHACKLETON Mk. 2

**ELECTRICAL INSTALLATION
FRONT CENTRE PORTION**

Ref. No.	Part No.	Description				No. off	Matl. Spec.	Cl. of St.	Plate and Illust'n No.
		1	2	3	4			M.R.	
LAMPS ON PILOT'S COAMING (V6184)									
Spares for :—									
5X/9402802	—	Block, terminal, below switch panel ...				1	—	C	
5X/9402796	—	Cover, terminal block ...				1	—	C	
5L/9951283	—	Filament, 28v, 3.5w, red ...				4	—	B	17/11
5L/9951130	—	Filament, 2.5v, 0.75w, amber ...				3	—	B	17/10
5L/9959211	—	Filament, 24v, 2.4w, clear ...				1	—	B	17/9
5L/9952261	—	Filament, 12v, 7w, clear ...				6	—	B	17/8
13232	12SS3529	Grommet ...				7	—	C	17/12
	17SS3529	Grommet ...				4	—	C	17/13
5CX/4058	—	Lamp, type C, No. 2 ...				7	—	B	17/16
5CX/2676	—	Lamp, type B, No. 2 ...				6	—	B	17/15
5CX/462	—	Lamp, instrument ...				1	—	B	17/14
5X/9402800	—	Link, commoning, for T.B. ...				2	—		
5CX/3430	—	Screen, for lamp ...				6	—	B	
5X/9402799	—	Socket, for T.B. ...				2	—	C	
5CX/366	—	Lamp, instrument board ...				1	—	B	
MOUNTING, FLIGHT ENGINEER'S ANGLE POISE LAMP (Z6619)									
Spares for :—									
2125	20T2121	Bracket, support ...				1	L72	C	17/48
5L/244	—	Filament ...				1	—	B	17/49
5CX/1079	—	Lamp, angle poise ...				1	—	B	17/50
5CW/2452	—	Switch, dimmer ...				1	—	A	17/51
MOUNTING, BOMB DOOR CUT-OUT SWITCHES AT FORMER "E" (D8845)									
Spares for :—									
2355	2D8474	Bracket, switch mounting ...				2	L72		17/52
1704	2D8845	Clip, half, c/w backplate ...				2	S3 and T35	C	17/53
5CW/1675	15SS1862	Clip, half ...				2	—	C	17/54
	—	Switch, cut-out ...				2	—	A	17/55
PANEL, POWER, STARBOARD (V5467)									
Spares for :—									
	2V5467	BUSBAR, PANEL A & B, GROUP ...				1	—		
	3V5467	BUSBAR, PANEL B & C, GROUP ...				1	—		
	4V5467	BUSBAR, PANEL C & D, GROUP ...				1	—		
	10V5467	BUSBAR, PANELS D & E, GROUP ...				1	—		
	8V5467	Fairlead, for busbar ...				6	BSS668		
	9V5467	Fairlead, for busbar ...				2	BSS668		
PANEL, POWER, "A" (V5468) (See Equipment, Aircraft Instrument Panels)									
PANEL, POWER "B" & "C" (1 & 2V5469) (See Equipment Aircraft Instrument Panels)									
PANEL, POWER "D" (V8945) (See Equipment Aircraft Instrument Panels)									
PANEL, POWER "E" (V8863) (See Equipment Aircraft Instrument Panels)									

**ELECTRICAL INSTALLATION
FRONT CENTRE PORTION**

Ref. No.	Part No.	Description				No. off	Matl. Spec.	Cl. of St.	Plate and Illust'n No.
		1	2	3	4			M.R.	
		PANEL, PRE-SELECTOR (V5722) (See Equipment Aircraft Instrument Panels)							
		PANEL, A/C SUPPLY (V5455) (See Equipment Aircraft Instrument Panels)							
		PANEL, I/C AND LIGHTING (V5782) (See Equipment Aircraft Instrument Panels)							
5CW/724	—	Switch, dimmer, at former 1				1	—	A	
5CW/4520	—	Switch, relay, type T.1 at former 1				1	—	A	
5CW/2453	—	Switch, dimmer				1	—	A	
		WIRING, IGNITION (V6069) Spares for :—							
	497V5630	CABLE, F139, GROUP				1	—		
	500V5630	CABLE, F141, GROUP				1	—		
13234	1SS3628	Clamp, cable				48	—	C	
13268	3SS3628	Clamp, cable				38	—	C	
	9V6069	Fairlead, half, $\frac{1}{4}$" x $2\frac{3}{4}$" x $1\frac{1}{4}$"				2	BSS972		
	10V6069	Fairlead, half, $\frac{1}{4}$" x $2\frac{3}{4}$" x $1\cdot13$"				2	BSS972		
6446	4V6069	FAIRLEAD, 2 PART, AT FLOOR BEAM 5, GROUP				17	—	C	
6445	5V6069	FAIRLEAD, 4 PART, GROUP				1	—	C	
		WIRING AND CLIPPING IN CANOPY (T4873) (Mod. 771) Spares for :—							
	404V7467	CABLE, F.1445, GROUP				1	—		
	405V7467	CABLE, F.1446, GROUP				1	—		
	406V7467	CABLE, F.1447, GROUP				1	—		
	777T4142	CABLE, FR.777, GROUP				1	—		
	812T4142	CABLE, FR.812, GROUP				1	—		
	AS5418/17	Clip, cable on port side of mounting				2	—		
	AS5418/5	Clip, cable, aft of switch unit				1	—		
13094	4SS3315	Clip, cable on starboard side of mounting				3	—	C	

SHACKLETON Mk. 2

**ELECTRICAL INSTALLATION
CENTRE PORTION**

Page 197

Ref. No.	Part No.	Description				No. off	Matl. Spec.	Cl. of St.	Plate and Illust'n No.
		1	2	3	4			M.R.	
		ELECTRICAL INSTALLATION IN FUSELAGE AND MAINPLANE CENTRE PORTION (1V5792)							
		Spares for :—							
		ELECTRICAL INSTALLATION IN CENTRE PORTION FUSELAGE, FORMERS 6 TO 12 (V5792)							
		Spares for :—							
5J/3253	—	Accumulator, type C, between formers 11 & 12				4	—	A	17/56
5CZ/1947	—	Block, dummy terminal, type J, at former 12				4	—	B	
5CZ/430	—	Block, terminal, T.B. 138, at former 9 ...				1	—	B	
5X/9000	—	Block, terminal, H.D., T.B. 266, at former 12				1	—	C	
	1V7246	BOX, JUNCTION, BETWEEN FORMERS, 7 & 8, GROUP				1	—		
	1V5630	CABLE, P.13, TROUGH TO T.B.'s 14, 16 & 18, GROUP (Pre-Mod. 976)				1	—		
	1373V5630	CABLE, P.13, TROUGH TO T.B.'s 14, 16 & 18, GROUP (Mod. 976)				1	—		
	2V5630	CABLE, P.14, TROUGH TO T.B.'s 20, 22 & 24, GROUP (Pre-Mod. 976)				1	—		
	1374V5630	CABLE, P.14, TROUGH TO T.B.'s 20, 22 & 24, GROUP (Mod. 976)				1	—		
	3V5630	CABLE, P.15, TROUGH TO T.B.'s 13, 15, 17 & 24, GROUP				1	—		
	1375V5630	CABLE, P.15, TROUGH TO T.B.'s 13, 15, 17 & 24 GROUP				1	—		
	304V5630	CABLE, P.15, TROUGH TO T.B.'s 13, 15, 17 & 24 GROUP				1	—		
	234V5630	CABLE, P.39, EXT. BOTTLE TO No. 1 RELAY PANEL, GROUP				1	—		
	259V5630	CABLE, P.201, TAX. LAMP TO T.B. 39, GROUP				1	—		
	303V5630	CABLE, F.861, ACC. TO T.B. 266, GROUP				1	—		
	304V5630	CABLE, F.915, ACC. TO T.B. 266, GROUP				1	—		
	305V5630	CABLE, F.654, ACC. (+/-), GROUP				1	—		
	306V5630	CABLE, F.653, ACC. (+/-), GROUP				1	—		
	307V5630	CABLE, F.220, ACC. TO EARTH, GRP.				1	—		
	308V5630	CABLE, F.221, ACC. TO EARTH, GRP.				1	—		
	362V5630	CABLE, F.766, T.B. 294 TO EARTH, GROUP				1	—		
	516V5630	CABLE, F.954, ATTACK IND. TO EARTH GROUP				1	—		
	517V5630	CABLE, F.892, CONTROL SWITCH TO FUSE, ZZ.1, GROUP				1	—		
	518V5630	CABLE, F.900, RELAY TO EARTH, GRP.				1	—		
	546V5630	CABLE, F.170, T.B. 138 TO LAMP, GRP.				1	—		

**ELECTRICAL INSTALLATION
CENTRE PORTION**

Ref. No.	Part No.	Description				No. off	Matl. Spec.	Cl. of St.	Plate and Illust'n No.
		1	2	3	4			M.R.	
		ELECTRICAL INSTALLATION IN CENTRE PORTION FUSELAGE FORMERS 6 TO 12 (3V5792) (Cont'd)							
	562V5630	CABLE, F.173, T.B.139 TO DIMMER SWITCH, GROUP				1	—		
	563V5630	CABLE, F.171, T.B. 138 TO FUSE YY.6, GROUP				1	—		
	564V5630	CABLE, F.172, TB.139 TO FUSE YY.1, GROUP				1	—		
	565V5630	CABLE, F.730, T.B.138 TO LAMP, GRP.				1	—		
	568V5630	CABLE, F.169, T.B.138 TO DIMMER SWITCH, GROUP				1	—		
	570V5630	CABLE, F.213, T.B.138 TO EARTH, GRP.				1	—		
	572V5630	CABLE, F.214, T.B.139 TO EARTH, GRP.				1	—		
	573V5630	CABLE, F.174, T.B.139 TO LAMP, GRP.				1	—		
	714V5630	CABLE, F.662, FUSE ZZ.5 & 6 TO CIRCUIT BREAKER AT POWER PANEL, GROUP				1	—		
	760V5630	CABLE, F.175, T.B.139 TO LAMP, GRP.				1	—		
	808V5630	CABLE, F.852, SUPPRESSOR TO FUSE & EARTH, GROUP				1	—		
	809V5630	CABLE, F.417, CONTROL SWITCH TO RELAY AT RADAR STATION, GRP.				1	—		
	896V5630	CABLE, F.222, INDICATOR TO T.B.506, GROUP				1	—		
	914V5630	CABLE, F.226, DIMMER SWITCH TO LAMP AT FORMER 8, GROUP				1	—		
	915V5630	CABLE, F.227, DIMMER SWITCH TO T.B. 138, GROUP				1	—		
	950V5630	CABLE, F.414, URN TO T.B.177, GRP.				1	—		
	1195V5630	CABLE, F.414, URN TO T.B.177, GRP. (Items 950V5630 & 119V5630 are alternatives)				1	—		
	955V5630	CABLE, F.641, BOMB GEAR J.B. TO EARTH, GROUP				1	—		

SHACKLETON Mk. 2

**ELECTRICAL INSTALLATION
CENTRE PORTION**

Ref. No.	Part No.	Description				No. off	Matl. Spec.	Cl. of St.	Plate and Illust'n No.
		1	2	3	4			M.R.	
		ELECTRICAL INSTALLATION IN CENTRE PORTION FUSELAGE, FORMER 6 TO 12 (3V5792) (Cont'd)							
	1312V5630	CABLE, F.1472, RADAR SWITCH PANEL TO FUSE BOX 22, GROUP (Mod. 888)				1	—		
	1314V5630	CABLE, F.1474, ELECT. EQUIPT. PANEL, NOSE TO RADAR POWER PANEL, GROUP (Mod. 888)				1	—		
	1085V5630	CABLE, F.156, FUSE AT FORMER 2 TO SWITCH AT RADAR STATION, GROUP (Mod. 674)				1	—		
	1168V5630	CABLE, F.1293, AT DIMMER SWITCH, GROUP (Mod. 674)				1	—		
	1176V5630	CABLE, F.223, INDICATOR TO EARTH AT FORMER 3, GROUP (Mod. 674)				1	—		
	1177V5630	CABLE, F.225, FUSE AT FORMER 2 TO INDICATOR AT FORMER 8, BULKHEAD, GROUP (Mod. 674)				1	—		
	1180V5630	CABLE, F.201, HEAD AMP. TO MAIN AMPLIFIER, GROUP (Mod. 674)				1	—		
	1181V5630	CABLE, F.217, HEAD AMP. TO MAIN AMPLIFIER, GROUP (Mod. 674)				1	—		
	1182V5630	CABLE, F.219, MAIN AMPLIFIER TO RECORDER, GROUP (Mod. 674)				1	—		
	1237V5630	CABLE, F.1395, SWITCH AT RADAR POWER PANEL TO RELAY ON POWER PANEL "A", GROUP (Mod. 771)				1	—		
	1238V5630	CABLE, F.850, RADAR POWER PANEL TO EARTH, SUPPRESSOR AND RELAY ON POWER PANEL "A", GROUP (Mod. 771)				1	—		
	1261V5630	CABLE, F.1407, T.B.554 ON ALT'R. CONTROL PANEL TO EARTH, GROUP (Mod. 771)				1	—		
	1262V5630	CABLE, F.1441, T.B.554 TO T.B.555, GROUP (Mod. 771)				1	—		
	1263V5630	CABLE, F.1442, T.B.5419 TO ALT'R. CONTROL PANEL, GROUP (Mod. 771)				1	—		
	1265V5630	CABLE, F.1444 ALT'R. SWITCH, A.R.I. 18144 SWITCH & ALT'R. FAILURE INDICATOR ON ENGINEERS SIDE PANEL TO ALT'R. CONTROL PANEL, GROUP (Mod. 771)				1	—		

SHACKLETON Mk. 2

Page 200

**ELECTRICAL INSTALLATION
CENTRE PORTION**

Ref. No.	Part No.	Description				No. off	Matl. Spec.	Cl. of St.	Plate and Illust'n No.
		1	2	3	4			M.R.	
		ELECTRICAL INSTALLATION IN CENTRE PORTION FUSELAGE, FORMERS 6 TO 12 (3V5792) (Cont'd)							
	1279V5630	CABLE, F.1209, TRANSFORMER TO RADAR SWITCH PANEL, GROUP (Mod. 771)				1	—		
	1288V5630	CABLE, F.577, HORN TO EARTH, GROUP (Mod. 771)				1	—		
	1294V5630	CABLE, F.1294, LAMP AT S.B. STATION TO DIMMER SWITCH, GROUP (Mod. 771)				1	—		
	1295V5630	CABLE, F.1295, LAMP AT S.B. STATION TO DIMMER SWITCH, GROUP (Mod. 771)				1	—		
	1296V5630	CABLE, F.464, RADAR OPS. LAMP TO DIMMER SWITCH, GROUP				1	—		
13150	14SS706	Clip, $\frac{3}{16}$" dia., on galley bulkhead, port ...				2	L59	C	
13620	6SS3264	Clip, $\frac{9}{16}$" dia. on former 10 bulkhead at radar switch box				1	L72	C	
13083	11SS3264	Clip, $\frac{1}{8}$" dia. for use with clips 14SS70G ...				2	L72	C	
13606	5SS3329	Clip, flanged, on former 7 ...				2	DTD390	C	
13608	10SS3638	Clip, flanged, for cable relay No. 3 ...				1	L59		
	2bSS4205	Clip, insulated, $\frac{3}{16}$" dia. on former 9, star-board				2	—		
26DC/4308	3bSS4205	Clip, insulated, on radar ops. bottom shelf				3	—	C	
26DC/4309	4bSS4205	Clip, insulated, on former 8 bulkhead and radar ops. bottom shelf				3	—	C	
26DC/4312	7bSS4205	Clip, insulated, on former 10, for cable to lamp				4	—	C	
26DC/4316	10CSS4205	Clip, insulated, for cable to earth at former 12				3	—	C	
	24CSS4205	Clip, insulated, on pipe fairlead at former 7				1	—		
26DC/9589	2bSS4211	Clip, insulated, for cable to relay No. 3 at former 7				3	—	C	
	AS4525/8	Clip, at former 12 bulkhead, top, port ...				2	—		
	5V5792	Fairlead, half, between formers 11 & 12, top and bottom				2	BSS668		
	9V5792	Fairlead, half, on former 12 bulkhead, port				2	—		
	10V5792	Fairlead, half, on former 12 bulkhead, port				2	BSS668		
	1SS3450	Grommet, on top and bottom floor skins for cable to J.B.				2	—		
		LAMP, STEP ON FORWARD FACE OF FORMER 9 (V3792)							
		Spares for :—							
5L/264	—	Filament ...				1	—	B	17/64
5CX/446	—	Lamp, cockpit ...				1	—	B	17/65
5CZ/1290	—	Nut, terminal ...				8	—	C	

SHACKLETON Mk. 2

ELECTRICAL INSTALLATION

CENTRE PORTION

Ref. No.	Part No.	Description				No. off	Matl. Spec.	Cl. of St.	Plate and Illust'n No.
		1	2	3	4			M.R.	
<p>ELECTRICAL INSTALLATION IN CENTRE PORTION FUSELAGE, FORMERS 6 TO 12 (3V5792) (Cont'd)</p> <p>LAMP, COCKPIT, AT FORMER 10 (V5738)</p> <p>Spares for :—</p>									
5CZ/430	—					1	—	B	17/57
5CX/720	—					1	—	C	17/17
5L/9953219	—					1	—	B	17/18
13233	11SS3529					1	—	C	17/21
5CX/701	—					1	—	A	17/19
<p>MOUNTING, LAMP AT RADAR OPERATOR'S TABLE (7T3321) (Mod. 771)</p> <p>Spares for :—</p>									
1614	5T3321					1	—	C	17/97
1618	4T3321					2	S2/T35	C	17/98
13327	10SS1862					2	—	C	
5L/9952276	—					1	—	B	17/58
5CX/1079	—					1	—	A	17/60
5CW/2531	—					2	—	A	17/62
5CW/1722	—					1	—	A	
7076	SS4004					2	—	B	
	7D8417					1	DTD213		
<p>ELECTRICAL SERVICES TO PORT & STARBOARD ENGINES (4 & 2V5792)</p> <p>Spares for :—</p>									
5X/9402147	—					2	—	C	
	26V3451					1	—		
5CZ/430	—					2	—	B	
	4V5630					1	—		
	5V5630					1	—		
	6V5630					1	—		
	7V5630					1	—		
	8V5630					1	—		
	10V5630					1	—		
	11V5630					1	—		
	12V5630					1	—		
	19V5630					1	—		

ELECTRICAL INSTALLATION
CENTRE PORTION

Ref. No.	Part No.	Description				No. off	Matl. Spec.	Cl. of St.	Plate and Illust'n No.
		1	2	3	4			M.R.	
		ELECTRICAL SERVICES TO PORT & STARBOARD ENGINES (4 & 2V5792) (Cont'd)							
	21V5630	CABLE, P.6, TROUGH TO WING BREAK, PORT, GROUP (Pre-Mod. 976)				1	—		
	22V5630	CABLE, P.7, TROUGH TO WING BREAK, PORT, GROUP (Pre-Mod. 976)				1	—		
	23V5630	CABLE, P.8, TROUGH TO WING BREAK, GROUP (Pre-Mod. 976)				1	—		
	39V5630	CABLE, S.1, TROUGH TO No. 3 BULKHEAD, GROUP (Pre-Mod. 976)				1	—		
	42V5630	CABLE, S.3, TROUGH TO No. 3 BULKHEAD, GROUP (Pre-Mod. 976)				1	—		
	47V5630	CABLE, S.131, TROUGH TO T.B.'s 71, 72 & 73 (1.J.), GROUP (Pre-Mod. 976)				1	—		
	1390V5630	CABLE, S.13, TROUGH TO T.B.'s 63, 64 & 65, GROUP (Mod. 976)				1	—		
	1391V5630	CABLE, S.14, TROUGH TO 1.J., GROUP (Mod. 976)				1	—		
	1358V5630	CABLE, S.15, TROUGH TO 1.J., GROUP (Mod. 976)				1	—		
	1357V5630	CABLE, P.1, TROUGH TO No. 2 BULKHEAD, GROUP (Mod. 976)				1	—		
	1392V5630	CABLE, P.2, TROUGH TO No. 2 BULKHEAD, GROUP (Mod. 976)				1	—		
	1383V5630	CABLE, S.6, TROUGH TO WING BREAK, STARBOARD, GROUP (Mod. 976)				1	—		
	1384V5630	CABLE, S.7, TROUGH TO WING BREAK, STARBOARD, GROUP (Mod. 976)				1	—		
	1385V5630	CABLE, S.8, TROUGH TO WING BREAK, STARBOARD, GROUP (Mod. 976)				1	—		
	1359V5630	CABLE, P.3, TROUGH TO No. 2 BULKHEAD, GROUP (Mod. 976)				1	—		
	1364V5630	CABLE, P.6, TROUGH TO WING BREAK, PORT, GROUP (Mod. 976)				1	—		
	1367V5630	CABLE, P.7, TROUGH TO WING BREAK, PORT, GROUP (Mod. 976)				1	—		
	49V5630	CABLE, P.75, FROM 2.J., GROUP ...				1	—		
	50V5630	CABLE, P.69, FROM 2.J., GROUP ...				1	—		
	53V5630	CABLE, P.79, FROM 2.J., GROUP ...				1	—		
	49V5630	CABLE, P.75, FROM 2.J., GROUP ...				1	—		
	50V5630	CABLE, P.69, FROM 2.J., GROUP ...				1	—		

SHACKLETON Mk. 2

ELECTRICAL INSTALLATION
CENTRE PORTION

Page 202a

Ref. No.	Part No.	Description				No. off	Matl. Spec.	Cl. of St.	Plate and Illust'n No.
		1	2	3	4			M.R.	
		ELECTRICAL SERVICES TO PORT & STARBOARD ENGINES (4 & 2V5792) (Cont'd)							
	53V5630	CABLE, P.79, FROM 2.J., GROUP ...				1	—		
	56V5630	CABLE, P.79, FROM 2.J., GROUP ...				1	—		
	71V5630	CABLE, S.76, 1.J. TO RELAY PANEL AND No. 3 NACELLE, GROUP				1	—		
	75V5630	CABIN, P.159, T.B. 7 TO ENGINE PRIMING VALVE, GROUP				1	—		
	86V5630	CABLE, S.79, No. 3 NACELLE TO 1.J., GROUP				1	—		
6850	91V5630	CABLE, FOR UNDERCARRIAGE CONTROL, GROUP				1	—	B	
	96V5630	CABLE, S.107, STARBOARD INNER BULKHEAD TO SOLENOID SWITCH, GROUP				1	—		
	98V5630	CABLE, S.89, STARBOARD INNER RELAY PANEL TO EARTH, GROUP				1	—		
	102V5630	CABLE, S.105, T.B. 181 TO SOLENOID SWITCH, GROUP				1	—		
	103V5630	CABLE, P.106, PORT INNER BULKHEAD TO SOLENOID SWITCH, GROUP				1	—		
	105V5630	CABLE, P.142, PORT INNER BULKHEAD TO EARTH, GROUP				1	—		
	134V5630	CABLE, P.88, TO T.B. 12 TO EARTH, GROUP				1	—		
	143V5630	CABLE, P.113, No. 2 BULKHEAD TO SUPPRESSOR, GROUP				1	—		
	144V5630	CABLE, S.114, No. 3 BULKHEAD TO SUPPRESSOR, GROUP				1	—		
	164V5630	CABLE, P.12, TROUGH TO PORT OUTER WING BREAK, GROUP (Pre-Mod. 976)				1	—		
	165V5630	CABLE, P.11, TROUGH TO PORT OUTER WING BREAK, GROUP (Pre-Mod. 976)				1	—		
	166V5630	CABLE, P.16, TROUGH TO PORT OUTER WING BREAK, GROUP (Pre-Mod. 976)				1	—		
	167V5630	CABLE, S.11, TROUGH TO STARBOARD OUTER WING BREAK, GROUP (Pre-Mod. 976)				1	—		
	168V5630	CABLE, S.124, TROUGH TO STARBOARD OUTER WING BREAK, GROUP (Pre-Mod. 976)				1	—		
	169V5630	CABLE, P.197, TROUGH TO PORT OUTER WING BREAK, GROUP				1	—		
	170V5630	CABLE, S.16, TROUGH TO STARBOARD OUTER WING BREAK, GROUP (Pre-Mod. 976)				1	—		

SHACKLETON Mk. 2

ELECTRICAL INSTALLATION
CENTRE PORTION

Page 203

Ref. No.	Part No.	Description				No. off	Matl. Spec.	Cl. of St.	Plate and Illust'n No.
		1	2	3	4			M.R.	
		ELECTRICAL SERVICES TO PORT & STARBOARD ENGINES (4 & 2V5792) (Cont'd)							
	1372V5630	CABLE, P.12 TROUGH TO PORT OUTER WING BREAK, GROUP (Mod. 976)				1	—		
	1371V5630	CABLE, P.11, TROUGH TO PORT OUTER WING BREAK, GROUP (Mod. 976)				1	—		
	1376V5630	CABLE, P.16, TROUGH TO PORT OUTER WING BREAK, GROUP (Mod. 976)				1	—		
	1388V5630	CABLE, S.11, TROUGH TO STARBOARD OUTER WING BREAK, GROUP (Mod. 976)				1	—		
	1389V5630	CABLE, S.124, TROUGH TO STARBOARD OUTER WING BREAK, GROUP (Mod. 976)				1	—		
	1393V5630	CABLE, S.16, TROUGH TO STARBOARD OUTER WING BREAK, GROUP (Mod. 976)				1	—		
	171V5630	CABLE, S.200, TROUGH TO STARBOARD OUTER WING BREAK, GROUP				1	—		
	172V5630	CABLE, P.160, T.B. 7 TO PRIMING PUMP, GROUP				1	—		
	173V5630	CABLE, S.166, T.B. 57 TO PRIMING PUMP, GROUP				1	—		
	174V5630	CABLE, S.165, T.B. 57 TO PRIMING VALVE, GROUP				1	—		
	190V5630	CABLE, P.51, T.B. 27 TO SWITCH, GROUP				1	—		
	229V5630	CABLE, P.50, EXT. BOTTLE TO T.B. 27, GROUP				1	—		
	232V5630	CABLE, S.50, EXT. BOTTLE TO T.B. 77, GROUP				1	—		
	237V5630	CABLE, P.86, EXT. BOTTLE TO T.B. 12, GROUP				1	—		
	239V5630	CABLE, S.87, EXT. BOTTLE TO T.B. 61, GROUP				1	—		
	249V5630	CABLE, S.88, EXT. BOTTLE TO T.B. 61, GROUP				1	—		
	255V5630	CABLES, P.116, P.117, P.118, No. 2 GENERATOR TO SUPPRESSOR, GROUP				1	—		
	372V5630	CABLE, S.149, TO No. 3 SUPPRESSOR, GROUP				1	—		
	373V5630	CABLE, S.150, No. 3 SUPPRESSOR TO SOLENOID, GROUP				1	—		
	374V5630	CABLE, S.151, No. 3 SUPPRESSOR TO EARTH, GROUP				1	—		
	262V5630	CABLE, P.104, T.B. 181 TO SOLENOID SWITCH, GROUP				1	—		

**ELECTRICAL INSTALLATION
CENTRE PORTION**

Ref. No.	Part No.	Description				No. off	Matl. Spec.	Cl. of St.	Plate and Illust'n No.
		1	2	3	4			M.R.	
		ELECTRICAL SERVICES TO PORT & STARBOARD ENGINES (4 & 2V5792) (Cont'd)							
6852	263V5630	CABLES, S.119, S.120 AND S.121, No. 3 GENERATOR TO SUPPRESSOR, GROUP				1	—	B	
	269V5630	CABLE, P.125, SUPPRESSOR TO No. 1 VOLT. REGULATOR, GROUP				1	—		
	271V5630	CABLE, P.122, SUPPRESSOR TO No. 2 VOLT. REGULATOR, GROUP				1	—		
	272V5630	CABLE, S.125, SUPPRESSOR TO No. 3 VOLT. REGULATOR, GROUP				1	—		
	273V5630	CABLE, S.128, SUPPRESSOR TO No. 4 VOLT. REGULATOR, GROUP				1	—		
	275V5630	CABLE, P.123, No. 2 SUPPRESSOR TO EARTH, GROUP				1	—		
	276V5630	CABLE, S.126, No. 3 SUPPRESSOR TO EARTH, GROUP				1	—		
	278V5630	CABLE, P.10, TROUGH TO PORT OUTER WING BREAK, GROUP (Pre-Mod. 976)				1	—		
	281V5630	CABLE, P.5, TO T.B. 37, GROUP (Pre-Mod. 976)				1	—		
	283V5630	CABLE, S.5, TO T.B. 87, GROUP (Pre-Mod. 976)				1	—		
	329V5630	CABLE, F.673, MASTER INDICATOR TO PORT OUTER WING BREAK, GROUP				1	—		
	1370V5630	CABLE, P.10, TROUGH TO PORT OUTER WING BREAK, GROUP (Mod. 976)				1	—		
	1363V5630	CABLE, P.5, TO T.B. 37, GROUP (Mod. 976)				1	—		
	1382V5630	CABLE, S.5, TO T.B. 87, GROUP (Mod. 976)				1	—		
	686V5630	CABLE, P.108, 2.J., TO T.B. 46 AND SUPPRESSOR, GROUP				1	—		
	689V5630	CABLE, S.109, 1.J. TO T.B.'s 69, 90, 71, 73 AND 74, GROUP				1	—		
	733V5630	CABLE, P.45, FEATHERING PUMP TO EARTH, GROUP				1	—		
	734V5630	CABLE, S.96, FEATHERING PUMP TO EARTH, GROUP				1	—		
	735V5630	CABLE, P.94, FEATHERING PUMP TO SOLENOID SWITCH, GROUP				1	—		
	736V5630	CABLE, S.95, FEATHERING PUMP TO SOLENOID SWITCH, GROUP				1	—		
	757V5630	CABLE, P.87, EXT. BOTTLE TO T.B. 12, GROUP				1	—		

SHACKLETON Mk. 2

**ELECTRICAL INSTALLATION
CENTRE PORTION**

Page 205

Ref. No.	Part No.	Description				No. off	Matl. Spec.	Cl. of St.	Plate and Illust'n No.
		1	2	3	4			M.R.	
		ELECTRICAL SERVICES TO PORT & STARBOARD ENGINES (4 & 2V5792) (Cont'd)							
	900V5630	CABLE, P.9, TROUGH TO PORT OUTER WING BREAK, GROUP (Pre-Mod. 976)				1	—		
	902V5630	CABLE, P.4, TROUGH TO No. 4 BULKHEAD, GROUP (Pre-Mod. 976)				1	—		
	903V5630	CABLE, S.9, TROUGH TO STARBOARD WING BREAK, GROUP (Pre-Mod. 976)				1	—		
	904V5630	CABLE, S.4, TROUGH TO No. 3 BULKHEAD, GROUP (Pre-Mod. 976)				1	—		
	1369V5630	CABLE, P.9, TROUGH TO PORT OUTER WING BREAK, GROUP (Mod. 976)				1	—		
	1360V5630	CABLE, P.4, TROUGH TO No. 4 BULKHEAD, GROUP (Mod. 976)				1	—		
	1386V5630	CABLE, S.9, TROUGH TO STARBOARD WING BREAK, GROUP (Mod. 976)				1	—		
	1381V5630	CABLE, S.4, TROUGH TO No. 3 BULKHEAD, GROUP (Mod. 976)				1	—		
	916V5630	CABLE, P.230, WING ROOT TO LEADING EDGE J.B., PORT, GROUP				1	—		
	917V5630	CABLE, P.231, WING ROOT TO LEADING EDGE J.B., PORT, GROUP				1	—		
	918V5630	CABLE, S.102, WING ROOT TO LEADING EDGE J.B., STARBOARD, GROUP				1	—		
	919V5630	CABLE, S.101, WING ROOT TO LEADING EDGE J.B., STARBOARD, GROUP				1	—		
	920V5630	CABLE, P.100, WING BREAK TO LEADING EDGE J.B., PORT, GROUP				1	—		
	921V5630	CABLE, P.101, LEADING EDGE J.B. TO No. 2 ENGINE BULKHEAD, GROUP				1	—		
	927V5630	CABLE, S.231, LEADING EDGE J.B. TO No. 3 ENGINE BULKHEAD, GROUP				1	—		
	928V5630	CABLE, S.230, OUTER WING BREAK TO STARBOARD LEADING EDGE J.B., GROUP				1	—		

SHACKLETON Mk. 2

Page 206

ELECTRICAL INSTALLATION
CENTRE PORTION

Ref. No.	Part No.	Description				No. off	Matl. Spec.	Cl. of St.	Plate and Illust'n No.
		1	2	3	4			M.R.	
ELECTRICAL SERVICES TO PORT & STARBOARD ENGINES (4 & 2V5792) (Cont'd)									
13234	3SS3628	Clamp, ignition cable				4	—	C	
13268	1SS3628	Clamp, cable				22	—	C	
26DC/1635	16SS1862	Clip, cable, on engine subframe for use with 19V3451				3	—	C	
13062	1SS3264	Clip, cable, $\frac{5}{16}$ " dia.				7	L72	C	
13107	3SS3264	Clip, cable, $\frac{7}{16}$ " dia.				4	L72	C	
13135	5SS3264	Clip, cable, $\frac{9}{16}$ " dia.				4	L72	C	
13620	6SS3264	Clip, cable, $\frac{11}{16}$ " dia.				6	L72	C	
13083	11SS3264	Clip, cable, $1\frac{1}{16}$ " dia.				3	L72	C	
13928	23SS3264	Clip, cable, $1\frac{1}{16}$ " dia.				5	L72	C	
	31SS3264	Clip, cable				3	L72	C	
13070	1SS3315	Clip, cable				6	DTD275	C	
13072	3SS3315	Clip, cable, 0.176" dia.				7	DTD275	C	
13579	9SS3315	Clip, cable				2	DTD275	C	
13641	15SS3315	Clip, cable				3	DTD275	C	
	5SS3865	Clip, cable				2	—		
	154V2432	Clip, for clamp on inboard engine subframe stay				3	—		
	19V3451	Clip, on subframe strut, for use with 16SS1862				3	—		
5H/8	—	Cover, terminal block, port				2	—	C	
ELECTRICAL SERVICES TO FIRE EXTINGUISHER BOTTLES, PORT & STARBOARD (1 & 2V5798) Spares for :—									
13106	1SS2877	Bush, for cables on front spar				1	—	C	
	191V5630	CABLE, P.25, BETWEEN PORT O/B FLAME SWITCHES, GROUP				1	—		
	193V5630	CABLE, P.53, INBOARD TO OUTBOARD FLAME SWITCHES, GROUP				1	—		
	194V5630	CABLE, P.54, BETWEEN PORT I/B FLAME SWITCHES, GROUP				1	—		
	197V5630	CABLE, S.52, BETWEEN STARBOARD O/B FLAME SWITCHES, GROUP				1	—		
	198V5630	CABLE, S.53, INBOARD TO OUTBOARD FLAME SWITCHES, GROUP				1	—		
	199V5630	CABLE, S.54, BETWEEN STARBOARD I/B FLAME SWITCHES, GROUP				1	—		
	201V5630	CABLE, P.155, FLAME SWITCH TO T.B.27, GROUP				1	—		
	202V5630	CABLE, S.161, FLAME SWITCH TO T.B. 77, GROUP				1	—		
	228V5630	CABLE, P.49, EXT. BOTTLE TO T.B.'s 27 & 34, GROUP				1	—		

SHACKLETON Mk. 2

**ELECTRICAL INSTALLATION
CENTRE PORTION**

Ref. No.	Part No.	Description				No. off	Matl. Spec.	Cl. of St.	Plate and Illust'n No.
		1	2	3	4			M.R.	
ELECTRICAL SERVICES TO FIRE EXTINGUISHER BOTTLES, PORT & STARBOARD (1 & 2V5798) (Cont'd)									
	231V5630	CABLE, S.49, EXT. BOTTLE TO T.B.'s 77 & 83, GROUP				1	—		
13091	2SS3264	Clip, cable, $\frac{3}{8}$ " dia.				22	L72	C	
13908	17SS3315	Clip, cable				19	DTD275	C	
2043	19SS3529	Grommet, for cables to flame switches				2	—	C	
2772	4SS3530	Grommet, for cable to 1J & 2J				1	—	C	
	3V3766	Tube, "Systoflex" 15mm i/d x 5" for cable through tank ribs				4	—		
ELECTRICAL SERVICES TO MAIN UNDERCARRIAGE PORT & STARBOARD (1 & 2V5789)									
Spares for :—									
5X/9402802	—	Block, terminal, 2-way				1	—	C	
5X/9402803	—	Block, terminal, 5-way				1	—	C	
13097	1SS2885	Bush, for cable through front spar, starboard				1	—	C	
14200	74V5630	CABLE, P.29, T.B.5 TO LH. UP SWITCH, GROUP				1	—	B	
14201	78V5630	CABLE, P.30, T.B.5 TO RH. UP SWITCH, GROUP				1	—	B	
14202	80V5630	CABLE, P.33, T.B.6 TO LH. DOWN SWITCH, GROUP				1	—	B	
14203	82V5630	CABLE, S.29, T.B.55 TO LH. UP SWITCH, GROUP				1	—	B	
14204	83V5630	CABLE, S.30, T.B. 55 TO RH. UP SWITCH, GROUP				1	—	B	
14205	84V5630	CABLE, S.33, T.B.56 TO LH. DOWN SWITCH, GROUP				1	—	B	
13062	1SS3264	Clip, cable, $\frac{5}{16}$ " dia.				12	L72	C	
13091	2SS3264	Clip, cable, $\frac{5}{16}$ " dia.				2	L72	C	
13620	6SS3264	Clip, cable, $\frac{5}{16}$ " dia.				3	L72	C	
13093	8SS3264	Clip, cable, $\frac{5}{16}$ " dia.				3	L72	C	
13108	9SS3264	Clip, cable, $\frac{5}{16}$ " dia.				3	L72	C	
13070	1SS3315	Clip, cable				6	DTD275	C	
13072	3SS3315	Clip, cable, 0.176" dia.				5	DTD275	C	
5X/9402796	—	Cover, 2 way T.B.				1	—	C	
5X/9402794	—	Cover, 5 way T.B.				1	—	C	
13315	21SS3529	Grommet, on rear spar				1	—	C	
13106	1SS2877	Grommet, on front spar, port				1	—	C	
5X/9994577	—	Socket, single				3	—	C	
5X/9402799	—	Socket, double				4	—	C	
5CW/4099	—	Switch, micro, down				2	—	A	
5CW/4098	—	Switch, micro up				2	—	A	

ELECTRICAL INSTALLATION
CENTRE PORTION

Ref. No.	Part No.	Description				No. off	Matl. Spec.	Cl. of St.	Plate and Illust'n No.
		1	2	3	4			M.R.	
		ELECTRICAL SERVICES TO MASTER ENGINE & OIL COCK ACTUATORS, T.K.S. PUMP & SUPPRESSOR, No. 2 ENGINE, PORT & No. 3 ENGINE, STARBOARD (1 & 2V5791)							
		Spares for :—							
5X/9402147	—	Block, terminal	2	—	C	
	264V5630	CABLE, P.157, SUPPRESSOR TO MOTOR, PORT, GROUP				1	—		
	265V5630	CABLE, S.163, SUPPRESSOR TO MOTOR, STARBOARD, GROUP				1	—		
	266V5630	CABLE, P.134, SUPPRESSOR TO EARTH, PORT, GROUP				1	—		
	268V5630	CABLE, S.138, SUPPRESSOR TO EARTH, STARBOARD, GROUP				1	—		
	430V5630	CABLE, P.207, ACTUATOR TO 2J, GROUP				1	—		
	431V5630	CABLE, S.216, ACTUATOR TO 1J, GROUP				1	—		
13626	7SS3329	Clip, cable, dia. starboard...	1	—		
13076	8SS3329	Clip, cable, flanged	3	DTD390	C	
13070	1SS3315	Clip, cable	5	DTD275	C	
13072	3SS3315	Clip, cable, 0.176" dia.	4	DTD275	C	
13621	14SS3315	Clip, cable	1	DTD275	C	
13096	16SS3315	Clip, cable, dia. starboard...	1	DTD275	C	
5X/9402795	—	Cover, terminal block, starboard	2	—	C	
5X/9994577	—	Socket, single, starboard	5	—	C	
5X/9402799	—	Socket, double, starboard	1	—	C	
		ELECTRICAL SERVICES TO IGNITION ANALYSER, PORT & STARBOARD (3 & 4V7137)							
		Spares for :—							
	PLESSEY CZ71947	Box, junction, type J1/1	2	—		
	5V7137	Bracket, mounting analyser	1	L72		
	922V5630	CABLE, P.233, LEADING EDGE J.B. TO NACELLE J.B., PORT, GROUP				1	—		
	923V5630	CABLE, P.234, NACELLE J.B. TO WING BREAK, PORT, GROUP				1	—		
	925V5630	CABLE, P.232, LEADING EDGE J.B. TO NACELLE J.B., GROUP				1	—		
	926V5630	CABLE, P.236, NACELLE J.B. TO No. 2 ENGINE BULKHEAD, GRP.				1	—		
	929V5630	CABLE, S.232, LEADING EDGE J.B. TO NACELLE J.B., STBD., GROUP				1	—		

ELECTRICAL INSTALLATION
CENTRE PORTION

Ref. No.	Part No.	Description				No. off	Matl. Spec.	Cl. of St.	Plate and Illust'n No.
		1	2	3	4			M.R.	
		ELECTRICAL SERVICES TO IGNITION ANALYSER, PORT & STARBOARD (3 & 4V7137) (Cont'd)							
	930V5630	CABLE, S.235, NACELLE J.B. TO WING BREAK, STARBOARD, GRP.				1	—		
	932V5630	CABLE, S.237, LEADING EDGE J.B. NACELLE J.B., STARBOARD, GRP.				1	—		
	933V5630	CABLE, S.234, NACELLE J.B. TO ENGINE BULKHEAD, GROUP				1	—		
13234	3SS3628	Clamp, ignition cables				2	—	C	
13089	3SS706	Clip, cable				7	L59	C	
13207	4SS706	Clip, cable				7	L59	C	
	7V7137	Fairlead, half, $2\frac{5}{8}$ " x $\frac{5}{16}$ "				16	DTD130		
	27V3451	Fairlead, half, $1\frac{3}{4}$ " x $\frac{7}{8}$ " x $\frac{1}{8}$ "				2	BSS668		
	7V7137	Fairlead, half, $2\frac{5}{8}$ " x $\frac{3}{8}$ " x $\frac{5}{16}$ " on front spar				4	DTD130		
		PANEL RELAY, PORT & STARBOARD (3 & 1V5715) (See Instrument Panels)							
		PANEL, ELECTRICAL SERVICE, AT WING ROOT, PORT & STARBOARD (1D7201) & (1D8161) Spares for :—							
5CX/906	—	Connector				2	—	B	
	11T2184	Fairlead, half, top LH., starboard ...				2	BSS668		
	6D7201	Fairlead, centre, top portion				1	BSS668		
	7D7201	Fairlead, centre, bottom portion ...				1	BSS668		
	5V7166	PANEL, WING BREAK, PORT, GROUP (Mod. 771)				1	—		
	6V7166	PANEL, WING BREAK, STARBOARD, GROUP (Mod. 771) Spares for :—							
5CZ/906	—	Connector				1	—	B	
	7V7166	Plate, mounting, port				1	L72		
	8V7166	Plate, mounting, starboard				1	L72		
5X/6092	—	Plug				8	—	B	
5X/6007	—	Plug, bulkhead				1	—	B	
10H/19610	—	Socket				1	—	B	
	PLESSEY CZ62272	Socket-plug				2P 1S	—	B B	
	28V3451	Plate, mounting, for fairleads on front spar at inboard nacelle				2	—		
	1V3694	SUPPORT, FOR EQUIPMENT TRAY ON FRONT SPAR, GROUP				3	—		
5CY/1002	—	Suppressor, type P				1	—	A	
5CY/3084	—	Suppressor, type X3				1	—	A	

SHACKLETON Mk. 2

**ELECTRICAL INSTALLATION
CENTRE PORTION**

Ref. No.	Part No.	Description				No. off	Matl. Spec.	Cl. of St.	Plate and Illust'n No.
		1	2	3	4			M.R.	
		ELECTRICAL BOX FOR A.R.I.18144 DE-ICING (V9514) (Mod. 771)							35/42
		Spares for :—							
5H/2	—	Block,	terminal	1	—	C	
5H/9402803	—	Block,	terminal	1	—	C	
5H/75	—	Box,	fuse, 12 way	1	—	C	
	1V9666	BOX, LESS EQUIPMENT, GROUP ...				1	—		
	ROTAX	Contactor	1	—	B	
	06701/2	Cover,	T.B.	1	—	C	
5CW/	—	Cover,	T.B.	1	—	C	
5H/9402795	—	Fuse,	5 amp. H.R.C.	3	—	B	
5H/9402794	—	Fuse,	10 amp. H.R.C.	3	—	B	
5CZ/5215	—	Fuse,	2.5 amp.	2	—	C	
5CZ/5216	—	Link,	commoning, 2 way	1	—	C	
5CZ/879	—	Link,	commoning, 3 way	2	—	C	
5H/83	—	Link,	commoning	2	—	C	
5H/84	—	Regulator,	voltage	1	—		
5H/9402800	—	Relay,	thermal overload	1	—		
	ROTAX	Relay,	current balance	1	—		
5UC/	23/47848	Socket,	for T.B.'s	7	—	C	
5CW/	D6211/1	Socket,	test	1	—	B	
	F4913	Switch,	magnetic	1	—		
5H/9402799	—	Switch,	magnetic	1	—		
5CY/587	—	Trimmer	1	—		
5CW/6182	D6311	Unit,	transformer rectifier	1	—		
	ROTAX								
5CW/	D6703/2								
5U/	ZA2606								
5U/	U1801								

ELECTRICAL INSTALLATION
CENTRE PORTION

Ref. No.	Part No.	Description				No. off	Matl. Spec.	Cl. of St.	Plate and Illust'n No.
		1	2	3	4			M.R.	
		ELECTRICAL EQUIPMENT & CABLES, FOR GALLEY HOT-CUPBOARD, IN FUSELAGE CENTRE PORTION (57 & 60Z4315)							
		Spares for :—							
5H/2	—	Block, connection	1	—	C	
5H/6	—	Block, connection	1	—	C	
5CY/4221	—	Breaker, circuit, type A5	1	—	A	
	61Z4315	CABLE, GROUP	1	—		
	62Z4315	CABLE, GROUP	1	—		
	63Z4315	CABLE, GROUP	1	—		
	64Z4315	CABLE, GROUP	1	—		
	65Z4315	CABLE, GROUP	1	—		
	66Z4315	CABLE, GROUP	1	—		
	67Z4315	CABLE, GROUP	1	—		
	68Z4315	CABLE, GROUP	1	—		
	69Z4315	CABLE, GROUP	1	—		
	70Z4315	CABLE, GROUP	1	—		
	71Z4315	CABLE, GROUP	1	—		
	72Z4315	CABLE, GROUP	1	—		
	73Z4315	CABLE, GROUP	1	—		
5H/8	—	Cover, connection block	1	—	C	
5H/12	—	Cover, connection block	1	—	C	
4809	10S2568	Guard, switch	2	L72	C	17/66
5V/60	HE33336	Hotplate, 1000 W. 24 V. G.E.C.	1	—	A	17/67
	177V4424	Label, connection block, T.B.177	1	—		
	178V4424	Label, connection block, T.B.178	1	—		
2039	670SS3675	Label, "Urn"	1	—	C	17/68
2040	844SS3675	Label, "On-Off" circuit breaker	1	—	C	17/69
2041	732SS4000	Label, "Hotplate"	1	—	C	17/70
2042	733SS4000	Label, "Low-High"	1	—	C	17/71
	844SS4000	Label, "Supply-Stop-Start"	1	—		17/72
5C/	SMITHS LTD.	Lamp, warning indicator	1	—	A	17/73
5H/18	C457/EBA/1	Socket, terminal	3	—	C	
5H/125	—	Socket, terminal	3	—	C	
	SANTON	Switch, 4 pos., 60 A.	1	—		
	R615/JR	Switch, stop	1	—	B	17/74
5CW/4323	ROTAX	Switch, start	1	—	B	17/75
5CW/4221	D5407	—	1	—		

**ELECTRICAL INSTALLATION
REAR CENTRE PORTION**

Ref. No.	Part No.	Description				No. off	Matl. Spec.	Cl. of St.	Plate and Illust'n No.
		1	2	3	4			M.R.	
		ELECTRICAL INSTALLATION IN REAR CENTRE PORTION (V5874)							
		Spares for :—							
5X/9402802	—	Block,	terminal,	T.B.292 at former 13	1	—	C C C B B	
5X/9402803	—	Block,	terminal,	T.B.129 at former 22	1	—		
5X/9402147	—	Block,	terminal,	T.B. 295	1	—		
5CZ/432	—	Block,	terminal,	T.B.503 at former 22, bottom	...	1	—		
5CZ/430	—	Block,	terminal,	T.B.140 at former 22, port	1	—		
	4V5874	BRACKET, LAMP, BETWEEN FORMERS 26 & 27, GROUP				1	—		
	73V5630	CABLE, F.106, T.B.129 TO EARTH, GRP.				1	—		
	322V5630	CABLE, F.578, WARNING HORN TO EARTH, GROUP				1	—		
	356V5630	CABLE, F.759, TO No. 2 HEATER PANEL, GROUP				1	—		
	357V5630	CABLE, F.751 TO No. 3 HEATER PANEL, GROUP				1	—		
	364V5630	CABLE, F.978, T.B.294 TO T.B.226, GRP.				1	—		
	365V5630	CABLE, F.754, T.B.294 TO T.B.227, GRP.				1	—		
	366V5630	CABLE, F.914, T.B.292 TO No. 3 HEATER PANEL, GROUP				1	—		
	367V5630	CABLE, F.913, T.B.292 TO No. 2 HEATER PANEL, GROUP				1	—		
	368V5630	CABLE, F.779, T.B.226 TO PRESSURE SWITCH, GROUP				1	—		
	369V5630	CABLE, F.780, T.B.227 TO PRESSURE SWITCH, GROUP				1	—		
	371V5630	CABLE, F.760, T.B.226 TO EARTH, GRP.				1	—		
	376V5630	CABLE, F.758, TO T.B.226 & IGNITION SWITCH, GROUP				1	—		
	377V5630	CABLE, F.761, TO T.B.226 & SWITCH, GROUP				1	—		
	378V5630	CABLE, F.753, TO T.B.227 & SWITCH, GROUP				1	—		

ELECTRICAL INSTALLATION

REAR CENTRE PORTION

Ref. No.	Part No.	Description	No. off	Matl. Spec.	Cl. of St.	Plate and Illust'n No.
					M.R.	
		1 2 3 4				
5211	381V5630	CABLE, F.749, No. 3 HEATER PANEL TO HEATER, GROUP	1	—	B	
14297	382V5630	CABLE, F.757, No. 2 HEATER PANEL TO HEATER, GROUP	1	—	B	
	441V5630	CABLE, F.101, T.B.295 TO EARTH, GRP.	1	—		
	442V5630	CABLE, F.99, T.B.295 TO SWITCH, GRP.	1	—		
	443V5630	CABLE, F.100 TO SWITCH AND EARTH, GROUP	1	—		
	469V5630	CABLE, F.953, RELAY TO EARTH AT FORMER 23, GROUP	1	—		
	501V5630	CABLE, F.951, CONTROL VALVE TO EARTH, GROUP	1	—		
	509V5630	CABLE, F.935, SCANNER TO RELAY, GROUP	1	—		
	515V5630	CABLE, F.391, SCANNER TO INDICATOR RELAYS AND SWITCH, GROUP	1	—		
	531V5630	CABLE, F.246, DIST. TO FLARE DISCHARGER, GROUP	1	—		
	533V5630	CABLE, F.247, DIST. TO FLARE DISCHARGER, GROUP	1	—		
	534V5630	CABLE, F.515, TO T.B.'s 155, 216 & 367, GRP.	1	—		
	535V5630	CABLE, F.248, DIST. TO FLARE DISCHARGER, GROUP	1	—		
	536V5630	CABLE, F.249, DIST. TO FLARE DISCHARGER, GROUP	1	—		
	543V5630	CABLE, F.647, T.B.280 TO LAMP, GROUP	1	—		
	548V5630	CABLE, F.250, DIST. TO FLARE CONTROL BOX, GROUP	1	—		
	552V5630	CABLE, F.183, T.B.140 TO EARTH, GRP.	1	—		
	553V5630	CABLE, F.82, T.B.141 TO EARTH, GROUP	1	—		
	554V5630	CABLE, F.176, T.B.140 TO FUSE, GROUP	1	—		
	555V5630	CABLE, F.177, T.B.141 TO FUSE, GROUP	1	—		
	556V5630	CABLE, F.182, FUSE TO SWITCH, GRP.	1	—		

SHACKLETON Mk. 2

ELECTRICAL INSTALLATION
REAR CENTRE PORTION

Page 215

Ref. No.	Part No.	Description				No. off	Matl. Spec.	Cl. of	Plate and Illust'n No.
		1	2	3	4			St. M.R.	
	557V5630	CABLE, F.380, SCANNER SOCKET TO T.B.140, GROUP				1	—		
	559V5630	CABLE, F.181, T.B.140 TO DIMMER SWITCH, GROUP				1	—		
	560V5630	CABLE, F.186, T.B.141 TO LAMP, GROUP				1	—		
	683V5630	CABLE, F.956, ON FLARE SHELF, GRP.				1	—		
	707V5630	CABLE, F.362, No. 2 HEATER PANEL TO MICRO SWITCH, GROUP				1	—		
	708V5630	CABLE, F.363, No. 3 HEATER PANEL TO MICRO SWITCH, GROUP				1	—		
	738V5630	CABLE, F.894, CONTROL SWITCH TO S.2 RELAY IN SCANNER, GROUP				1	—		
	739V5630	CABLE, F.933, S.4 RELAY TO S.2 RELAY IN SCANNER, GROUP				1	—		
	744V5630	CABLE, F.467, DIMMER SWITCH TO LAMP AT FORMER 22, GROUP				1	—		
	776V5630	CABLE, F.178, T.B.140 TO LAMP AT FORMER 21, GROUP				1	—		
	787V5630	CABLE, F.752, T.B.227 TO EARTH, GRP.				1	—		
	830V5630	CABLE, F.835, T.B.141 TO SOCKET AT FORMER 27, GROUP				1	—		
	831V5630	CABLE, F.836, T.B.141 TO SOCKET AT FORMER 27, GROUP				1	—		
	848V5630	CABLE, F.48, POWER PANEL TO PLUG AT FORMER 23, GROUP				1	—		
	849V5630	CABLE, F.50, POWER PANEL TO PLUG AT FORMER 23, GROUP				1	—		
	851V5630	CABLE, F.66, PLUG AT FORMER 23, TO EARTH, GROUP				1	—		
	873V5630	CABLE, F.733, TO T.B.503, GROUP ...				1	—		
	874V5630	CABLE, F.731, T.B.503 TO EARTH, GRP.				1	—		
	884V5630	CABLE, F.993, FLARE SHELF TO FORMER 22, GROUP				1	—		
	966V5630	CABLE, F.44, TROUGH TO POWER PANEL REAR SPAR & T.B.188, GROUP				1	—		

ELECTRICAL INSTALLATION
REAR CENTRE PORTION

Ref. No.	Part No.	Description				No. off	Matl. Spec.	Cl. of St.	Plate and Illust'n No.
		1	2	3	4			M.R.	
	967V5630	CABLE, F.36, TROUGH TO T.B.'s 129 & 182 AND EQUIPMENT AT FORMER 15, GROUP				1	—		
	968V5630	CABLE, F.35, TROUGH TO T.B.'s 233, 292 & 503, RELAY AND EARTH, GROUP				1	—		
	1000V5630	CABLE, F.1174, PORT TO STARBOARD OBSERVER'S SWITCHES, GROUP (Mod. 645)				1	—		
	1001V5630	CABLE, F.1175, STBD. SWITCH TO FLAME FLOAT EJECTOR, GRP. (Mod. 645)				1	—		
	1165V5630	CABLE, F.1290 T.B.140 TO DIMMER SWITCH, GROUP (Mod. 674)				1	—		
	1166V5630	CABLE, F.1291, DIMMER SWITCH TO LAMP, GROUP (Mod. 674)				1	—		
	1218V5630	CABLE, F.257, TO ILL. FLARE PANEL DOOR SWITCH, INDICATOR & No. 1 FLARE SWITCH, GROUP (Mod. 771)				1	—		
	1239V5630	CABLE, F.1398, POWER PANEL "D" TO CONTROL SWITCH, GROUP (Mod. 771)				1	—		
	1240V5630	CABLE, F.1399, CONTROL SWITCH TO EARTH, GROUP (Mod. 771)				1	—		
	1241V5630	CABLE, F.1400, T.B.178 TO SWITCH GROUP (Mod. 771)				1	—		
	1242V5630	CABLE, F.1401, BETWEEN SWITCHES AT FORMER 16, GROUP (Mod. 771)				1	—		
	1243V5630	CABLE, F.1402, POWER PANEL "D" TO SWITCH AT FORMER 16, GRP. (Mod. 771)				1	—		
	1244V5630	CABLE, F.1403, CONTROL SWITCH TO HEATER, GROUP (Mod. 771)				1	—		
	1284V5630	CABLE, F.1426, T.B.558 TO DIMMER SWITCH ON FUSE PANEL, GROUP (Mod. 771)				1	—		
	1285V5630	CABLE, F.1457, FUSE BOX "YY" TO T.B.557, GROUP (Mod. 771)				1	—		
	1286V5630	CABLE, F.1456, T.B.557, TO EARTH GRP. (Mod. 771)				1	—		
	1287V5630	CABLE, F.576, WARNING HORN AT FORMER 6 TO HORN AT FORMER 22, GROUP (Mod. 771)				1	—		
	1442V5630	CABLE, F.1442, DIMMER SWITCH TO LAMP AND EARTH, GROUP (Mod. 771)				1	—		

SHACKLETON Mk. 2

ELECTRICAL INSTALLATION
REAR CENTRE PORTION

Ref. No.	Part No.	Description				No. off	Matl. Spec.	Cl. of St.	Plate and Illust'n No.
		1	2	3	4			M.R.	
	1291V5630	CABLE, F.1427, T.B.558 TO EARTH GRP. (Mod. 771)				1	—		
	1292V5630	CABLE, F.1414, T.B.557 TO DIMMER SWITCH, GROUP				1	—		
13134	1SS706	Clip, $\frac{1}{4}$ " dia. former 22, top				4	L59	C	
13904	2SS706	Clip, $\frac{3}{8}$ " dia. for cable to drift meter				9	L59	C	
7558	8SS706	Clip, at former 22, starboard				5	L59	C	
	2SSS706	Clip, at former 29, bottom, port				1	L59		
13062	1SS3264	Clip, $\frac{5}{16}$ " dia. for cable to fuel cock actuator at former 12				2	L72	C	
13107	3SS3264	Clip, $\frac{7}{16}$ " dia. at former 21				4	L72	C	
13108	9SS3264	Clip, $1\frac{3}{16}$ " dia. for cable to cartridge flare control and distributor				2	L72	C	
13461	21SS3264	Clip, $1\frac{3}{8}$ " dia. for cables to trough				1	L72	C	
13099	5SS3266	Clip, flanged, former 22, top starboard				1	L72	C	
13070	1SS3315	Clip, cable				63	DTD275	C	
13134	1SS706	Clip, cable				14	DTD275	C	
13072	3SS3315	Clip, 0.176" dia. for cable to forward roof trough				7	DTD275	C	
13094	4SS3315	Clip, 0.195" dia. at former 23, top				6	DTD275	C	
13908	17SS3315	Clip, cable to lamp, former 29				1	DTD275	C	
13938	19SS3315	Clip, cable, at former 21				2	DTD275	C	
13075	1SS3329	Clip, cable, flanged				13	DTD390	C	
13606	5SS3329	Clip, flanged, at formers 26 & 27				4	DTD390	C	
13076	8SS3329	Clip, flanged, for cable to actuator, on bracket, former 12				1	DTD390	C	
13921	9SS3329	Clip, flanged, former 16A, top, port				1	DTD390	C	
13077	11SS3329	Clip, flanged, former 13				2	DTD390	C	
13104	13SS3329	Clip, flanged, formers 22 & 24				2	DTD390	C	
26DC/8323	1A.SS4205	Clip, insulated, $\frac{1}{4}$ " dia. former 2				5	—	C	
26DC/8324	2A.SS4205	Clip, insulated $\frac{3}{16}$ " dia. at inverter				2	—	C	
26DC/4309	4bSS4205	Clip, insulated, below floor, former 22				5	—	C	
26DC/4314	9bSS4205	Clip, insulated, former 29, bottom port (Mod. 645)				1	—	C	
26DC/4315	10bSS4205	Clip, insulated, former 29, top (Mod. 645)				1	—	C	
26DC/4316	10CSS4205	Clip, insulated, below floor, former 22, stbd.				1	—	C	
26DC/11194	12bSS4205	Clip, insulated, at former 21				4	—	C	
12721	18cSS4205	Clip, insulated, former 22, top port				1	—	C	
	6SS4657	Clip, insulated, $\frac{5}{16}$ " dia. on table between formers 14 & 16				5	—	C	
26DC/9598	7SS4657	Clip, insulated, at formers 14 & 16				3	—	C	
14408	9SS4657	Clip, insulated, at formers 14 & 16				2	—	C	
14409	10SS4657	Clip, insulated, former 15, port				3	—	C	
14412	16SS4657	Clip, cable (Mod. 988)				7	—	C	
5X/9402796	—	Cover, T.B.291				1	—	C	
5X/9402794	—	Cover, T.B.129				1	—	C	
5X/9402795	—	Cover, T.B.295				1	—	C	
5CX/720	—	Dome, glass, for lamp between formers 26 & 27				1	—	C	
	6V3452	Fairlead, half, on floor between formers 15 & 16				2	BSS668		
	3V5927	Fairlead, half, below floor, on former 27				2	BSS668		
	10V5874	Fairlead, half on floor between formers 24 & 25				2	BSS668		

ELECTRICAL INSTALLATION

REAR CENTRE PORTION

Ref. No.	Part No.	Description				No. off	Matl. Spec.	Cl. of	Plate and Illust'n No.	
		1	2	3	4			St. M.R.		
5X/9400051 5L/9953219 13915 2880 13233 5CX/701	3V5874	Fairlead, half, on floor, former 12				2	BSS668			
	13V5874	Fairlead, half, at former 22 in bomb bay ...				2	BSS668			
	—	Ferrule				2	—	C		
	—	Filament, for lamp between formers 26 & 27				1	—	B		
	5SS3530	Grommet, on floor between formers 24 & 25				1	—			
	7SS3529	Grommet, former 16A, top, port				1	—	C		
	11SS3529	Grommet, at formers 14, 16 and 22 below floor				3	—			
	—	Lamp, cabin, between formers 26 & 27 ...				1	—	B	17/76	
	MOUNTING, FLAME FLOAT RELEASE SWITCH AT FORMER 25 (V8479) (Mod. 645)									
	Spares for :—									
5CW/898	2V8479	BRACKET, MOUNTING, GROUP ...				1	—			
	—	Switch, push button				1	—	A		
MOUNTING, CABIN LAMP, BETWEEN FORMERS 20 & 21 (V5743)										
Spares for :—										
5CX/720 5L/9953219 5CX/701	—	Dome, glass				1	—	B	17/17	
	—	Filament				1	—	B	17/18	
	—	Lamp, cockpit				1	—	B	17/19	
MOUNTING, CABIN LAMP, AT FORMER 13 (V5739)										
Spares for :—										
5CX/720 5L/9953219 5CX/701	—	Dome, glass				1	—	B	17/17	
	—	Filament				1	—	B	17/18	
	—	Lamp, cockpit				1	—	B	17/19	
PANEL, No. 2 HEATER CONTROL BETWEEN FORMERS 16A & 17 (V5717) (See Instrument Panels)										
PANEL, No. 3 HEATER (V5715) (See Instrument Panels)										
PANEL, RELAY, BETWEEN FORMERS 22 & 23 (V5872) (See Instrument Panels)										
5X/6017 5CZ/587	12V3452	Plate, mounting T.B.129 at former 22				1	L72			
	—	Plug, for flap indicator transmitter at former 16				1	—	B		
	—	Socket, inspection at formers 26, 27 and 22 below floor				3	—	B		
	—	Socket, single, for T.B.'s... ..				9	—	C		
5X/9994577 5X/9402799	—	Socket, double, for T.B.'s				2	—	C		
	7V3452	Trough, roof, between formers 13 & 18 ...				1	L72			
8V3452	TROUGH, ROOF, BETWEEN FORMERS 18 & 22, GROUP				1	—				
	17V3452	Tube, polyvinal, for aft roof trough through formers				4	—			

SHACKLETON Mk. 2

ELECTRICAL INSTALLATION

Page 219

REAR CENTRE PORTION

Ref. No.	Part No.	Description				No. off	Matl. Spec.	Cl. of St.	Plate and Illust'n No.
		1	2	3	4			M.R.	
		WIRING AND CLIPPING AT POWER STATION (V8944) (Mod. 674)							
		Spares for :—							
	990V5630	CABLE, F.1217, STARTER PANEL TO FUSE BOX "AF", GROUP				1	—		
	1008V5630	CABLE, F.1188, INVERTER TO REAR INVERTER PANEL, GROUP				1	—		
	1009V5630	CABLE, F.1189, INVERTER TO CONTROL PANEL, GROUP				1	—		
	1010V5630	CABLE, F.1190, POWER PANEL TO RELAY, GROUP				1	—		
	1011V5630	CABLE, F.1191, RELAY TO INVERTER STARTER PANEL, GROUP				1	—		
	1012V5630	CABLE, F.1192, INVERTER STARTER PANEL TO INVERTER, GROUP				1	—		
	1014V5630	CABLE, F.1194, INVERTER STARTER PANEL TO RELAY, GROUP				1	—		
	1015V5630	CABLE, F.1195, RELAY TO EARTH, GROUP				1	—		
	1016V5630	CABLE, F.1196, INVERTER TO EARTH, GROUP				1	—		
	1019V5630	CABLE, F.1037, POWER PANEL TO RELAY, GROUP				1	—		
	1020V5630	CABLE, F.1038, RELAY TO STARTER PANEL, GROUP				1	—		
	1021V5630	CABLE, F.1039, STARTER PANEL TO INVERTER, GROUP				1	—		
	1022V5630	CABLE, F.1040, INVERTER TO EARTH, GROUP				1	—		
	1023V5630	CABLE, F.1041, STARTER PANEL TO RELAY, GROUP				1	—		
	1024V5630	CABLE, F.1042, RADAR SWITCH PANEL TO RELAY, GROUP				1	—		
	1025V5630	CABLE, F.1044, AT STARTER PANEL, GROUP				1	—		
	1416V5630	CABLE, F.1045, INVERTER TO FUSE BOX "AT", GROUP (Mod. 1005)				1	—		
	1027V5630	CABLE, F.1046, INVERTER TO TYPE 24 CONTROL PANEL, GROUP				1	—		
	1028V5630	CABLE, F.1051, TYPE 24 CONTROL PANEL TO TYPE 15 CONTROL PANEL, GROUP				1	—		

ELECTRICAL INSTALLATION

REAR CENTRE PORTION

Ref. No.	Part No.	Description				No. off	Matl. Spec.	Cl. of	Plate and Illust'n No.
		1	2	3	4			St. M.R.	
		WIRING AND CLIPPING AT POWER STATION (V8944) (Cont'd)							
	1415V5630	CABLE, F.1053, S.2 RELAY TO FUSE BOX "AT", GROUP (Mod. 1005)				1	—		
	1417V5630	CABLE, F.1054, TYPE 24 CONTROL PANEL TO S.2 RELAY, GROUP (Mod. 1005)				1	—		
	1040V5630	CABLE, F.1155, RELAY TO T.B.525, GROUP				1	—		
	1041V5630	CABLE, F.1156, S.2 RELAY TO T.B.525, GROUP				1	—		
	1042V5630	CABLE, F.1157, TYPE 24 CONTROL PANEL TO T.B.524, GROUP				1	—		
	1043V5630	CABLE, F.1158, TYPE 24 CONTROL PANEL TO T.B.525, GROUP				1	—		
	1046V5630	CABLE, F.1161, T.B.525 TO EARTH, GROUP				1	—		
	1047V5630	CABLE, F.1218, FUSE BOX "AF" TO RESISTOR, GROUP				1	—		
	1050V5630	CABLE, F.1210, RADAR SWITCH PANEL TO REAR INVERTER PANEL, GROUP				1	—		
	1052V5630	CABLE, F.1212, FUSE BOX "AF" TO RESISTOR, GROUP				1	—		
	1053V5630	CABLE, F.1213, INVERTER STARTER PANEL TO FUSE BOX "AF", GROUP				1	—		
	1058V5630	CABLE, F.1018, POWER PANEL "D" TO No. 2, 201 INVERTER, GROUP				1	—		
	1059V5630	CABLE, F.1019, TYPE 2A REGULATOR TO INVERTER, GROUP				1	—		
	1060V5630	CABLE, F.1020, TYPE 2A REGULATOR TO INVERTER, GROUP				1	—		
	1061V5630	CABLE, F.1021, INVERTER TO EARTH, GROUP				1	—		
	1062V5630	CABLE, F.1022, INVERTER TO EARTH, GROUP				1	—		
	1063V5630	CABLE, F.1023, INVERTER TO RADAR SWITCH PANEL, GROUP				1	—		
	1064V5630	CABLE, F.1024, INVERTER TO RADAR SWITCH PANEL, GROUP				1	—		
	1400V5630	CABLE, F.1538, POWER STATION TO EARTH 10, GROUP (Mod. 988)				1	—		
	1402V5630	CABLE, F.1540, POWER STATION TO RADAR PANEL, GROUP (Mod. 988)				1	—		
	1401V5630	CABLE, F.1539, POWER STATION TO A.D.F. SUPPLIES, GROUP				1	—		
	1424V5630	CABLE, F.1549, FUSE BOX "BA", POWER STATION TO RELAY 9B, No. 2 POWER STATION, GROUP				1	—		

SHACKLETON Mk. 2

ELECTRICAL INSTALLATION
REAR CENTRE PORTION

Page 221

Ref. No.	Part No.	Description				No. off	Matl. Spec.	Cl. of St.	Plate and Illust'n No.
		1	2	3	4			M.R.	
		WIRING AND CLIPPING AT POWER STATION (V8944) (Cont'd)							
	1065V5630	CABLE, F.1025, No. 1 VOLT REG. TO SUPPRESSOR, GROUP				1	—		
	1066V5630	CABLE, F.1026, No. 2 VOLT. REG. TO SUPPRESSOR, GROUP				1	—		
	1067V5630	CABLE, F.1027, No. 1 SUPPRESSOR TO T.B.517, GROUP				1	—		
	1068V5630	CABLE, F.1028, No. 2 SUPPRESSOR TO T.B.517, GROUP				1	—		
	1069V5630	CABLE, F.1029, No. 1 CIRCUIT BREAKER TO T.B.517, GROUP				1	—		
	1070V5630	CABLE, F.1030, No. 2 CIRCUIT BREAKER TO T.B.517, GROUP				1	—		
	1071V5630	CABLE, F.1031, RADAR SWITCH BOX TO T.B.517, GROUP				1	—		
	1073V5630	CABLE, F.1219, RESISTOR TO RELAY, GROUP				1	—		
	1077V5630	CABLE, F.1017, POWER PANEL "D" TO INVERTER, GROUP				1	—		
	1081V5630	CABLE, F.1146, F.1147, 304 INVERTER TO VOLT REG. & EARTH, GROUP				1	—		
	1082V5630	CABLE, F.1148, F.1149, 304 INVERTER TO VOLT. REG. & EARTH, GROUP				1	—		
	1083V5630	CABLE, F.1150, VOLT. REG. TO SWITCH, GROUP				1	—		
	1084V5630	CABLE, F.1151, AMPLIFIER TO VOLT. REG., GROUP				1	—		
	1196V5630	CABLE, F.1367, POWER PANEL "E" TO RELAY, GROUP (Mod. 771)				1	—		
	1197V5630	CABLE, F.1368, RELAY TO STARTER PANEL, GROUP (Mod. 771)				1	—		
	1200V5630	CABLE, F.1371, RELAY TO EARTH, GROUP (Mod. 771)				1	—		
	1201V5630	CABLE, F.1372, 108 INVERTER TO EARTH, GROUP (Mod. 771)				1	—		
	1202V5630	CABLE, F.1373, 108 INVERTER TO CONTROL PANEL 26, GROUP (Mod. 771)				1	—		

ELECTRICAL INSTALLATION
REAR CENTRE PORTION

Ref. No.	Part No.	Description				No. off	Matl. Spec.	Cl. of St.	Plate and Illust'n No.
		1	2	3	4			M.R.	
		WIRING AND CLIPPING AT POWER STATION (V8944) (Cont'd)							
	1404V5630	CABLE, F.1375, T.B.547 & RELAY TO T.B.517 & FUSE, GROUP (Mod. 988)				1	—		
	1205V5630	CABLE, F.1376, RADAR SWITCH PANEL TO RELAY, GROUP				1	—		
	1254V5630	CABLE, F.1428, FUSE BOX "AY" TO SHUNT FIELD, GROUP (Mod. 825)				1	—		
	1255V5630	CABLE, F.1429, FUSE BOX "AY" TO STARTER PANEL, GROUP (Mod. 825)				1	—		
	1256V5630	CABLE, F.1430, FUSE BOX "AY" TO SHUNT FIELD, GROUP (Mod. 825)				1	—		
	1257V5630	CABLE, F.1431, FUSE BOX "AY" TO STARTER PANEL, GROUP (Mod. 825)				1	—		
	1267V5630	CABLE, F.1438, A.S.V. SWITCH TO RELAY, GROUP				1	—		
	1268V5630	CABLE, F.1439, R.A.D. POWER PANEL TO S.4 RELAY, GROUP (Mod. 771)				1	—		
	1269V5630	CABLE, F.1440, A.S.V. SWITCH TO S.4 RELAY, GROUP (Mod. 771)				1	—		
	1273V5630	CABLE, F.1211, RESISTOR TO S.4 RELAY, GROUP (Mod. 771)				1	—		
	1274V5630	CABLE, F.1214, S.4 RELAY TO EARTH, GROUP (Mod. 771)				1	—		
	1275V5630	CABLE, F.1220, FUSE BOX "AT", TO S.4 RELAY, GROUP (Mod. 771)				1	—		
	1280V5630	CABLE, F.1451, INVERTER TO CONT. PANEL 26, GROUP (Mod. 771)				1	—		
	1403V5630	CABLE, F.1452, CONT. PANEL 26 TO EQUIPMENT PANEL, GRP. (Mod. 988)				1	—		
	1282V5630	CABLE, F.1453, CONT. PANEL 26 TO RAD. SWITCH PANEL, GRP. (Mod. 771)				1	—		
26DC/9598	2B.SS4205	Clip, insulated, $\frac{3}{16}$ " dia.				1	—	C	
26DC/4314	7SS4657	Clip, insulated, 0.3" dia. (Mod. 988)... ..				1	—		
13134	9B.SS4205	Clip, insulated, $\frac{1}{2}$ " dia				2	—		
13583	1SS706	Clip, $\frac{1}{4}$ " dia.				7	L4		
11421	10SS3315	Clip, elongated				2	DTD275		
14408	4SS4657	Clip, insulated, $\frac{1}{4}$ " dia.				4	—		
14408	9SS4657	Clip, insulated, $\frac{1}{2}$ " dia. (Mod. 988)				9	—		
14409	10SS4657	Clip, insulated, $\frac{9}{16}$ " dia.				5	—		

SHACKLETON Mk. 2

ELECTRICAL INSTALLATION

Page 223

REAR PORTION

Ref. No.	Part No.	Description				No. off	Matl. Spec.	Cl. of St.	Plate and Illust'n No.
		1	2	3	4			M.R.	
		ELECTRICAL INSTALLATION IN FUSE-LAGE REAR PORTION (V5979)							
		Spares for :—							
5X/9402802	11V5979	Bag, stowage	1	—		
5X/9402803	—	Block, terminal, 2 way	2	—	C	
	—	Block, terminal, 5 way	1	—	C	
	8V5979	BRACKET, SWITCH, AT FORMER 33, GROUP				1	—		
	656V5630	CABLE, F.46, GROUP				1	—		
	344V5630	CABLE, F.889, TO T.B.254, GROUP ...				1	—		
	658V5630	CABLE, F.474, GROUP				1	—		
	782V5630	CABLE, F.104, T.B.129 TO T.B.128, GROUP				1	—		
	65V5630	CABLE, F.103, T.B.129 TO T.B.126, GROUP				1	—		
	885V5630	CABLE, F.985, TO T.B.273, GROUP ...				1	—		
	657V5630	CABLE, F.473, GROUP				1	—		
	90V5630	CABLE, F.976, TAIL WHEEL MICRO SWITCH TO T.B.254, GROUP				1	—		
7991	89V5630	CABLE, F.885, T.B.225 TO DOWN SWITCH, GROUP				1	—	B	
	541V5630	CABLE, F.466, DIMMER SWITCH TO LAMP, GROUP				1	—		
	88V5630	CABLE, F.884, T.B.255 TO UP SWITCH, GROUP				1	—		
	539V5630	CABLE, F.468, DIMMER SWITCH TO T.B. 280, GROUP				1	—		
	537V5630	CABLE, F.593, REAR OBS. LAMP TO DIMMER SWITCH, GROUP				1	—		
	783V5630	CABLE, F.470, TAIL NAV. LAMP TO T.B. 126, GROUP				1	—		
	628V5630	CABLE, F.306, T.B.126 TO T.B.280, GROUP				1	—		
	710V5630	CABLE, F.232, INDICATOR TO T.B.126, GROUP				1	—		
	730V5630	CABLE, F.997, RELAY TO RELAY, GROUP				1	—		
	528V5630	CABLE, F.973, RELAY TO RELAY, GRP.				1	—		
	877V5630	CABLE, F.609, CAM. PANEL TO EARTH, GROUP				1	—		
	878V5630	CABLE, F.608, CAM. PANEL TO EARTH, GROUP				1	—		

ELECTRICAL INSTALLATION
REAR PORTION

Ref. No.	Part No.	Description				No. off	Matl. Spec.	Cl. of St.	Plate and Illust'n No.
		1	2	3	4			M.R.	
	681V5630	CABLE, F.970, Q.1 RELAY TO CONTROL VALVE, GROUP				1	—		
	682V5630	CABLE, F.972, Q.1 RELAY TO CONTROL VALVE, GROUP				1	—		
	679V5630	CABLE, F.969, BETWEEN MICRO SWITCHES, GROUP				1	—		
	529V5630	CABLE, F.968, RELAY TO FWD. MICRO SWITCH, GROUP				1	—		
	530V5630	CABLE, F.971, RELAY TO AFT MICRO SWITCH, GROUP				1	—		
	680V5630	CABLE, F.974, RELAY TO T.B.126, GRP.				1	—		
	879V5630	CABLE, F.989, SWITCH PANEL TO CAM. BAY, GROUP				1	—		
	685V5630	CABLE, F.990, SWITCH PANEL TO CAM. BAY, GROUP				1	—		
	678V5630	CABLE, F.991 CAMERA TO M. 273, GRP.				1	—		
	881V5630	CABLE, GROUP				1	—		
5493	16V5979	Clip, conduit, upper				1	L72	C	
	17V5979	Clip, conduit, lower				1	L72		
	9V5979	Clip, strap, in camera housing				4	—		
6561	3V5979	Clip, cable, on u/c leg				3	S3	C	
5494	14V5979	Conduit, in wheel well, forward				1	L54	C	
5X/9402796	—	Cover, 2 way, T.B.				2	—	C	
5X/9402794	—	Cover, 5 way, T.B.				1	—	C	
	13V5979	Fairlead, half, on dust cover between formers 35 and 36				2	BSS668		
	25SS4204	Grommet, in tail wheel well, rear				1	—		
5008	21SS4204	Grommet, above dimmer switch on former 48				1	—	C	
13627	2SS2877	Grommet, below dimmer switch on former 48				1	—	C	
13916	10SS3529	Grommet, in tail wheel well, port				2	—	C	
		LAMP, DOWNWARD IDENT (3V7751)							
		Spares for :—							
5X/9402802	—	Block, terminal T.B.128				1	—	C	
	244V7467	CABLE, F.109, GROUP				1	—		
5X/9402796	—	Cover, T.B.128				1	—	C	
5L/9952604	—	Filament, 24 V. 80 W.				1	—	B	
5CX/557	—	Lamp, type "C"				1	—	B	
5CX/4521	—	Lamp, front, clear				1	—	B	
5X/9994577	—	Socket, single				2	—	C	
5X/9402799	—	Socket, double				1	—	C	
		LAMP, NAVIGATION (13D8681)							
		Spares for :—							
5L/9952275	—	Filament				1	—	B	
5CX/500	—	Front, glass				1	—	C	
5CX/498	—	Lamp				1	—	A	
									17/76
									17/79

SHACKLETON Mk 2

ELECTRICAL INSTALLATION

REAR PORTION

Ref. No.	Part No.	Description				No. off	Matl. Spec.	Cl. of St.	Plate and Illust'n No.
		1	2	3	4			M.R.	
		MOUNTING, LAMP, BETWEEN FORMERS 38 & 39 (1V5745)							17/80
		Spares for :—							
	2V5745	BRACKET, GROUP				1	—		17/81
5L/9952254	—	Filament				1	—	B	17/82
5CX/446	—	Lamp, Mk. 1A				1	—	B	17/83
		MOUNTING, LAMP, BETWEEN FORMERS 44 & 45 (1V5746)							17/84
		Spares for :—							
	2V5746	BRACKET, GROUP				1	—		17/85
5L/9952254	—	Filament				1	—	B	17/82
5CX/446	—	Lamp, Mk. 1A				1	—	B	17/83
		MOUNTING, LAMP, BETWEEN FORMERS 32 & 33 (1V5747)							17/86
		Spares for :—							
	2V5747	BRACKET, GROUP				1	—		17/87
5CX/720	—	Dome, glass				1	—	B	17/17
5L/9953219	—	Filament				1	—	B	17/18
5CX/701	—	Lamp				1	—	B	17/19
		PANEL, ELECTRICAL, FOR CAMERAS (S1840) (See Instrument Panels)							
5495	15V5979	Piece, packing, conduit clips				4	—	C	
5CY/985	—	Socket, at former 48, for camera heating muff				1	—	B	
5H/124	—	Socket, single, for T.B.'s				7	—	C	
5CW/2531	—	Switch, dimmer, at former 48				1	—	A	
		SWITCHES, REAR FLARE CHUTE (1V5970)							17/88
		Spares for :—							
5CZ/	SMITH'S C457/EBA/15	Indicator				1	—	A	17/89
	8S1803	PLATE, BLANKING, GROUP				1	—		
	9S1748	SWITCH, GROUP				1	—		
		Consisting of :—							
5CW/4221	75SS6000	Label, " On "				1	—		
	—	Switch				1	—	B	
	4S1803	SWITCH, GROUP				1	—		
		Consisting of :—							
5CW/4184	134SS6001	Label, " Open "				1	—		
	—	Switch				1	—	B	
	8S1748	SWITCH, AT FORMER 33, GROUP				1	—		
		Consisting of :—							
5CW/4184	752SS6000	Label, " On "				1	—		
	—	Switch				1	—	B	
5CZ/3601	—	Unit, thermostatic, at rear camera apertures...				2	—	A	

ELECTRICAL INSTALLATION
MAINPLANE, INNER

Ref. No.	Part No.	Description				No. off	Matl. Spec.	Cl. of St.	Plate and Illust'n No.
		1	2	3	4			M.R.	
5H/2	—	ELECTRICAL INSTALLATION IN MAIN PLANE INNER PORTION, PORT AND STARBOARD (1 & 3V5821) Spares for :—							
					Block, terminal, 3 way	1	—	C	
		31V5630			CABLE, P.17, PT. WG. BRK. TO No. 1 ENG., GROUP	1	—		
		33V5630			CABLE, P.18, PT. WG. BRK. TO No. 1 ENG., GROUP	1	—		
		35V5630			CABLE, P.19, PT. WG. BRK. TO No. 1 ENG., GROUP	1	—		
		901V5630			CABLE, P.20, PT. WG. BRK. TO No. 1, ENG., GROUP (Mod. 366)	1	—		
		285V5630			CABLE, P.21, PT. WG. BRK. No. T.B.38, GROUP	1	—		
		63V5630			CABLE, P.22, T.B.2-B TO EARTH 3, GRP.	1	—		
		135V5630			CABLE, P.28, P.O.W/B. TO No. 2 & 3 P.T.K.S., GROUP	1	—		
		699V5630			CABLE, P.31, No. 2 PUMP SUPP. TO EARTH 3, GROUP	1	—		
		700V5630			CABLE, P.32, No. 3 PUMP SUPP. TO EARTH 3, GROUP	1	—		
		244V5630			CABLE, P.37, T.B.28 TO FLAME SW., GRP.	1	—		
		242V5630			CABLE, P.38, T.B.28 TO FIRE BOTTLE, GROUP	1	—		
		234V5630			CABLE, P.39, T.B.28 AND 29 TO FIRE BOTTLE, GROUP	1	—		
		238V5630			CABLE, P.40, T.B.28 AND 29 TO FIRE BOTTLE, GROUP	1	—		
	240V5630			CABLE, P.41, T.B.28 AND 29 TO FIRE BOTTLE, GROUP	1	—			
	210V5630			CABLE, P.43, No. 1 REL. PNL. TO FL., SWITCH, GROUP	1	—			
	204V5630			CABLE, P.44, FLAME SW. TO FLAME SW., GROUP	1	—			
	205V5630			CABLE, P.45, FLAME SW. TO FLAME SW., GROUP	1	—			

SHACKLETON Mk. 2

ELECTRICAL INSTALLATION

Page 227

MAINPLANE, INNER

Ref. No.	Part No.	Description				No. off	Matl. Spec.	Cl. of St.	Plate and Illust'n No.
		1	2	3	4			M.R.	
	206V5630	CABLE, P.46, FLAME SW. TO FLAME SW., GROUP				1	—		
	207V5630	CABLE, P.47, FLAME SW. TO FLAME SW., GROUP				1	—		
	208V5630	CABLE, P.48, FLAME SW. TO FLAME SW., GROUP				1	—		
	176V5630	CABLE, P.55, T.B.8 TO EARTH 3, GROUP				1	—		
	108V5630	CABLE, P.56, P.O. W/B. TO P.O. WG. EQUIP., GROUP				1	—		
	126V5630	CABLE, P.62, No. 3 GAUGE EQUIP. TO WG. BRK., GROUP				1	—		
	132V5630	CABLE, P.66, P.O. WG. EQUIP. TO WG. BRK., GROUP				1	—		
	768V5630	CABLE, P.74, No. 2 PUMP TO SUPP., GROUP				1	—		
	182V5630	CABLE, P.78, No. 3 FUEL PUMP TO SUPP., GROUP				1	—		
	236V5630	CABLE, P.83, T.B.11 TO P.O. INTAKE BOT., GROUP				1	—		
	243V5630	CABLE, P.84, P.O. REL. PNL. TO P.O. ENG. BOT., GROUP				1	—		
	133V5630	CABLE, P.85, P.O. REL. PNL. TO EARTH 3, GROUP				1	—		
	162V5630	CABLE, P.89, No. 3 TRANS. TO EARTH 3, GROUP				1	—		
	163V5630	CABLE, P.90, No. 2 TRANS. TO EARTH 3, GROUP				1	—		
	254V5630	CABLE, P.93, PRESS, SW. TO No. 1 REL. PNL., GROUP				1	—		
	129V5630	CABLE, P.96, OUTBD. PUMP TO REL., GROUP				1	—		
	128V5630	CABLE, P.97, OUTBD. PUMP TO EARTH 3, GROUP				1	—		
	117V5630	CABLE, P.102, WG. ROOT BRK. TO WG. BRK., GROUP				1	—		
	109V5630	CABLE, P.107, P.O. REL. TO P.O. ENG. BULK, GROUP				1	—		

ELECTRICAL INSTALLATION
MAINPLANE, INNER

Ref. No.	Part No.	Description				No. off	Matl. Spec.	Cl. of St.	Plate and Illust'n No.
		1	2	3	4			M.R.	
	142V5630	CABLE, P.114, SUPP. TO P.O. ENG., GRP.				1	—		
	257V5630	CABLE, P.119, GEN. TO SUPP. P.O., GRP.				1	—		
	274V5630	CABLE, P.126, SUPP. TO EARTH P.O., GROUP				1	—		
	110V5630	CABLE, P.143, P.O. BULK TO EARTH 3, GROUP				1	—		
	233V5630	CABLE, P.144, P.O. REL. PNL. TO FIRE BOT., GROUP				1	—		
	146V5630	CABLE, P.146, EARTH 3 TO T.B.31, GRP.				1	—		
	154V5630	CABLE, P.147, T.B.30 TO O/B PUMP SUPP., GROUP				1	—		
	155V5630	CABLE, P.148, T.B.30 TO EARTH 3, GRP.				1	—		
	756V5630	CABLE, P.149, T.B.30 TO EARTH 3, GRP.				1	—		
	156V5630	CABLE, P.150, SUPP. TO O/B PUMP, GROUP				1	—		
	157V5630	CABLE, P.151, SUPP. TO I/B PUMP, GRP.				1	—		
	211V5630	CABLE, P.154, T.B.28 & 29 TO P.O. FLAME SW., GROUP				1	—		
	284V5630	CABLE, P.156, T.B.33 TO EARTH 3, GRP.				1	—		
	178V5630	CABLE, P.158, T.B.8 TO VALVE P.O., GRP.				1	—		
6854	328V5630	CABLE, P.187, P. I/B WG. BRK. TO P. O/B WG. BRK., GROUP				1	—	B	
	427V5630	CABLE, P.204, No. 1 FUEL COCK TO T.B.42 & 43, GROUP				1	—		
	424V5630	CABLE, P.205, EARTH 3 TO T.B.43-C, GRP.				1	—		
	673V5630	CABLE, P.210, P.O. LINK TO STARTER T.B., GROUP				1	—		
	751V5630	CABLE, P.212, GROUP				1	—		
	1260V5630	CABLE, P.237, GROUP (Mod. 771) ...				1	—		

SHACKLETON Mk. 2

**ELECTRICAL INSTALLATION
MAINPLANE, INNER**

Page 229

Ref. No.	Part No.	Description				No. off	Matl. Spec.	Cl. of St.	Plate and Illust'n No.
		1	2	3	4			M.R.	
	14V5630	CABLE, S.17, STBD. WG. BREAK TO No. 4 BULK, GROUP				1	—		
	15V5630	CABLE, S.18, STBD. WG. BREAK TO No. 4 BULK, GROUP				1	—		
	16V5630	CABLE, S.19, STBD. WG. BREAK TO No. 4 BULK, GROUP				1	—		
	905V5630	CABLE, S.20, STBD. WG. BREAK TO No. 4 BULK, GROUP (Mod. 366)				1	—		
	286V5630	CABLE, S.21, STBD. WG. BREAK TO T.B.86, GROUP				1	—		
	59V5630	CABLE, S.22, T.B.52 EARTH, GROUP ...				1	—		
	245V5630	CABLE, S.37, T.B.78 TO FLAME SW., GRP.				1	—		
	246V5630	CABLE, S.38, T.B.78 TO FIRE BOTTLE, GROUP				1	—		
	250V5630	CABLE, S.39, T.B.78 AND 79 TO FIRE BOTTLE, GROUP				1	—		
	252V5630	CABLE, S.40, T.B.78 AND 79 TO FIRE BOTTLE, GROUP				1	—		
	253V5630	CABLE, S.41, T.B.78 AND 79 TO FIRE BOTTLE, GROUP				1	—		
	213V5630	CABLE, S.43, T.B.78 AND 79 TO FIRE BOTTLE, GROUP				1	—		
	215V5630	CABLE, S.44, FLAME SW. TO FLAME SW., GROUP				1	—		
	216V5630	CABLE, S.45, FLAME SW. TO FLAME SW., GROUP				1	—		
	219V5630	CABLE, S.46, FLAME SW. TO FLAME SW., GROUP				1	—		
	220V5630	CABLE, S.47, FLAME SW. TO FLAME SW., GROUP				1	—		
	222V5630	CABLE, S.48, FLAME SW. TO FLAME SW., GROUP				1	—		
	748V5630	CABLE, S.55, T.B.58 TO EARTH 4, GRP.				1	—		
	92V5630	CABLE, S.56, WG. BRK. TO T.B.51, GRP.				1	—		

SHACKLETON Mk. 2

Page 230

ELECTRICAL INSTALLATION
MAINPLANE, INNER

Ref. No.	Part No.	Description				No. off	Matl. Spec.	Cl. of St.	Plate and Illust'n No.
		1	2	3	4			M.R.	
	99V5630	CABLE, S.62, WG. BRK. TO S.O. WG. EQUIP., GROUP				1	—		
	101V5630	CABLE, S.66, S.O. WB. TO S.O. EQUIP. GROUP				1	—		
	241V5630	CABLE, S.84, S.O. REL. PNL. TO AIR INT. BOT., GROUP				1	—		
	251V5630	CABLE, S.85, S.O. REL. PNL. TO ENG. SPR. BOTT., GROUP				1	—		
	749V5630	CABLE, S.86, S.O. REL. PNL. TO EARTH 4, GROUP				1	—		
	160V5630	CABLE, S.90, No. 3 TANK TRANS. TO EARTH 4, GROUP				1	—		
	161V5630	CABLE, S.91, No. 2 TANK TRANS. TO EARTH 4, GROUP				1	—		
	256V5630	CABLE, S.94, PRESS. SW. TO No. 4, REL. PL., GROUP				1	—		
	138V5630	CABLE, S.97, O/B PUMP TO REL., GRP.				1	—		
	750V5630	CABLE, S.98, S.O. HYDRO PUMP TO EARTH, GROUP				1	—		
	121V5630	CABLE, S.103, S.O. WG. BK. TO S.O. ENG., GROUP				1	—		
	93V5630	CABLE, S.108, S.O. BLK. HD. TO S.O. REL. PN., GROUP				1	—		
	149V5630	CABLE, S.115, S.O. BLK. HD. TO EQUIP., GROUP				1	—		
	267V5630	CABLE, S.122-S.123-S.124, S.O. ENG. GEN. TO SUPP., GROUP				1	—		
	931V5630	CABLE, S.236, GROUP				1	—		
	277V5630	CABLE, S.129, SUPP. TO EARTH 4, GRP.				1	—		
	148V5630	CABLE, S.132, T.B.59 TO EARTH 4, GRP.				1	—		
	152V5630	CABLE, S.153 O/B. PUMP SUPP. TO T.B.80, GROUP				1	—		
	153V5630	CABLE, S.154, I/B PUMP SUPP. TO T.B.80, GROUP				1	—		
	755V5630	CABLE, S.155, EARTH 4 TO T.B.80, GRP.				1	—		

SHACKLETON Mk. 2

ELECTRICAL INSTALLATION
MAINPLANE, INNER

Ref. No.	Part No.	Description				No. off	Matl. Spec.	Cl. of St. M.R.	Plate and Illust'n No.
		1	2	3	4				
	747V5630	CABLE, S.147, S.O. BULKHEAD TO EARTH 4, GROUP				1	—		
	248V5630	CABLE, S.148, T.B.79 TO FIRE BOTTLE, GROUP				1	—		
	159V5630	CABLE, S.156, SUPP. TO PUMP, GROUP				1	—		
	158V5630	CABLE, S.157, SUPP. TO No. 4 PUMP, GROUP				1	—		
	224V5630	CABLE, S.160, T.B.78 & 79 TO FLAME SW., GROUP				1	—		
	282V5630	CABLE, S.162, T.B.94 TO EARTH 4, GRP.				1	—		
	179V5630	CABLE, S.164, T.B.58 TO VALVE, GRP.				1	—		
	188V5630	CABLE, S.184, PLUG No. 184 TO PLUG No. 5, GROUP				1	—		
	104V5630	CABLE, S.198, S.O. W/B. TO S.O. WG. EQUIP., GROUP				1	—		
	701V5630	CABLE, S.203, No. 2 PUMP SUPP. TO EARTH 4, GROUP				1	—		
	702V5630	CABLE, S.209, S.O. W/BK. TO S.O. WG. EQUIP., GROUP				1	—		
	189V5630	CABLE, S.205, No. 3 PUMP TO SUPP., GROUP				1	—		
	769V5630	CABLE, S.206, No. 2 FUEL PUMP TO SUPP., GROUP				1	—		
	428V5630	CABLE, S.213, No. 4 FUEL COCK TO T.B. 91 & 92, GROUP				1	—		
	421V5630	CABLE, S.214, EARTH TO T.B.92-C, GRP.				1	—		
	671V5630	CABLE, S.218, S.O. LINK ON STARTER T.B., GROUP				1	—		
	690V5630	CABLE, S.222, T.B.93 TO T.B. 94, S.O. TRAILING EDGE, GROUP				1	—		
5X/9402795	—	Cover, 3-way T.B.				1	—	C	

ELECTRICAL INSTALLATION

MAINPLANE, INNER

Ref. No.	Part No.	Description				No. off	Matl. Spec.	Cl. of St.	Plate and Illust'n No.
		1	2	3	4			M.R.	
		ELECTRICAL INSTALLATION FOR UNDERCARRIAGE IN ENGINE NACELLE, PORT & STBD. (1 & 2V5789)							
		Spares for :—							
5X/9402802	—	Block, terminal, 2 way				2	—	C	
5X/9402803	—	Block, terminal, 5 way				2	—	C	
	74V5630	CABLE, T.B.5 TO LH. UP SWITCH, GROUP				1	—		
	78V5630	CABLE, T.B.5 TO RH. UP SWITCH, GROUP				1	—		
	80V5630	CABLE, T.B.6 TO LH. DOWN SWITCH, GROUP				1	—		
14207	807V5630	CABLE, T.B.6 TO RH. DOWN SWITCH, GROUP				1	—	B	
	82V5630	CABLE, T.B. 55 TO LH. UP SWITCH, GROUP				1	—		
	83V5630	CABLE, T.B.55 TO RH. UP SWITCH, GROUP				1	—		
	84V5630	CABLE, T.B.56 TO LH. UP SWITCH, GROUP				1	—		
14206	806V5630	CABLE, T.B.56 TO RH. DOWN SWITCH, GROUP				1	—	B	
13093	8SS3264	Clip, cable, $\frac{3}{4}$ " dia.				3	L72	C	
13108	9SS3264	Clip, cable, $\frac{13}{16}$ " dia.				3	L72	C	
5083	33V3093	Clip, cable				12	—	C	
13062	1SS3264	Clip, cable, $\frac{5}{16}$ " dia.				8	L72	C	
13091	2SS3264	Clip, cable, $\frac{5}{16}$ " dia.				3	L72	C	
13620	6SS3264	Clip, cable, $\frac{9}{16}$ " dia.				3	L72	C	
13070	1SS3315	Clip, cable				6	DTD275	C	
13072	3SS3315	Clip, cable, 0.165" dia.				4	DTD275	C	
13095	5SS3315	Clip, cable, 0.176" dia.				1	DTD275	C	
5X/9402796	—	Cover, terminal block				1	—	C	
13315	21SS3529	Grommet				1	—	C	
13106	1SS2877	Grommet				1	—	C	
5X/9402794	—	Socket, terminal, single tier... ..				1	—	C	
5X/9994577	—	Socket, terminal, single tier... ..				6	—	C	
5X/9402799	—	Socket, terminal, double tier				4	—	C	
5CW/4638	—	Switch, micro. up				2	—	B	
5CW/4639	—	Switch, micro, down				2	—	B	
5X/3252	—	End, trouser cable				1	—	C	
5K/34	—	Ferrule				1	—	C	

SHACKLETON Mk. 2

**ELECTRICAL INSTALLATION
MAINPLANE, OUTER**

Ref. No.	Part No.	Description				No. off	Matl. Spec.	Cl. of St.	Plate and Illust'n No.
		1	2	3	4			M.R.	
		ELECTRICAL INSTALLATION IN MAIN PLANE, OUTER PORTION, PORT AND STARBOARD (2 & 4V5821)							
		Spares for :—							
5CZ/430	—	Block, terminal	1	—	B	
5H/9402802	—	Block, terminal	1	—	C	
	60V5630	CABLE, P.23, T.B.1-A TO T.B.4-A, GROUP				1	—		
	705V5630	CABLE, P.24, T.B.3-B TO T.B.4-B, GROUP				1	—		
	140V5630	CABLE, P.27, T.B.1-2 TO PT. LAND, LP., GROUP				1	—		
	54V5630	CABLE, P.152, PORT VAV. LT. TO T.B.4, GROUP				1	—		
	324V5630	CABLE, P.166, DETECTOR TO O.O. W. BK., GROUP				1	—		
	145V5630	CABLE, P.188, T.B.31 TO T.B. 324, GROUP				1	—		
	259V5630	CABLE, P.201, PT. TAXY. LT. TO T.B.39, GROUP				1	—		
	261V5630	CABLE, P.194, T.B.39 TO T.B.2, GROUP				1	—		
	55V5630	CABLE, S.23, T.B.51 TO T.B.54, GROUP				1	—		
	704V5630	CABLE, S.24, T.B.52 TO T.B.54, GROUP				1	—		
	141V5630	CABLE, S.27, T.B.51 & 62 TO STBD. LAND. LP., GROUP				1	—		
	52V5630	CABLE, S.158, STBD. NAV. LT. TO T.B.54, GROUP				1	—		
	147V5630	CABLE, S.192, T.B.59 TO T.B.235, GROUP				1	—		
	260V5630	CABLE, S.197, T.B.88 TO T.B.52, GROUP				1	—		
	258V5630	CABLE, S.210, TAXY. LT. TO T.B.88 ...				1	—		

ELECTRICAL INSTALLATION
MAINPLANE, OUTER

Ref. No.	Part No.	Description				No. off	Matl. Spec.	Cl. of St.	Plate and Illust'n No.
		1	2	3	4			M.R.	
		ELECTRICAL INSTALLATION IN MAIN PLANE, OUTER PORTION, PORT AND STARBOARD (2 & 4V5821) (Cont'd)							
5H/7	—	Cover	1	—	C	
5CX/496	—	Lamp, navigation	1	—	A	17/91
5L/9953219	—	Lamp, filament	1	—	B	17/18
5L/651	—	Lamp, filament, 100 W.	1	—	B	17/92
5CX/4090	—	Lamp, taxying, type "B"	1	—	A	17/93
		MOUNTING, LANDING LAMP (F5992) Consisting of :—							
5L/2344	—	Filament, 350 V.	1	—	B	17/94
5CX/2052	—	Lamp, landing type "K"	1	—	A	17/95
5CX/4072	—	Plate, blanking	1	—	B	17/96
5X/766	—	Socket, type "M", 6 way lamp	1	—	B	17/97
5H/124	—	Socket, single tier	2	—	C	

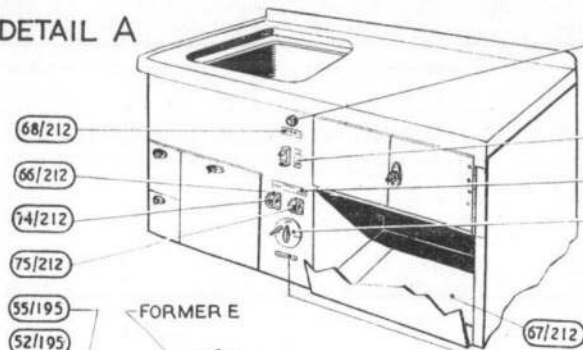
PAGES 237 to 240 NOT ISSUED.

THE UNIVERSITY OF CHICAGO

1953

ELECTRICAL INSTALLATION

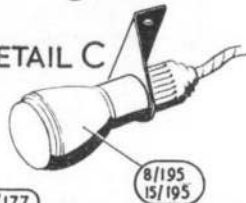
DETAIL A



DETAIL D



DETAIL C



94/235
95/235
96/235
97/235

92/235
93/235

91/235

13/195

8/195
15/195

16/195
11/195

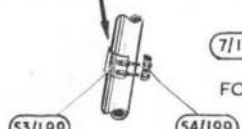
16/195
10/195

14/195
9/195

FORMER E



FORMER 6



FORMERS 32-33



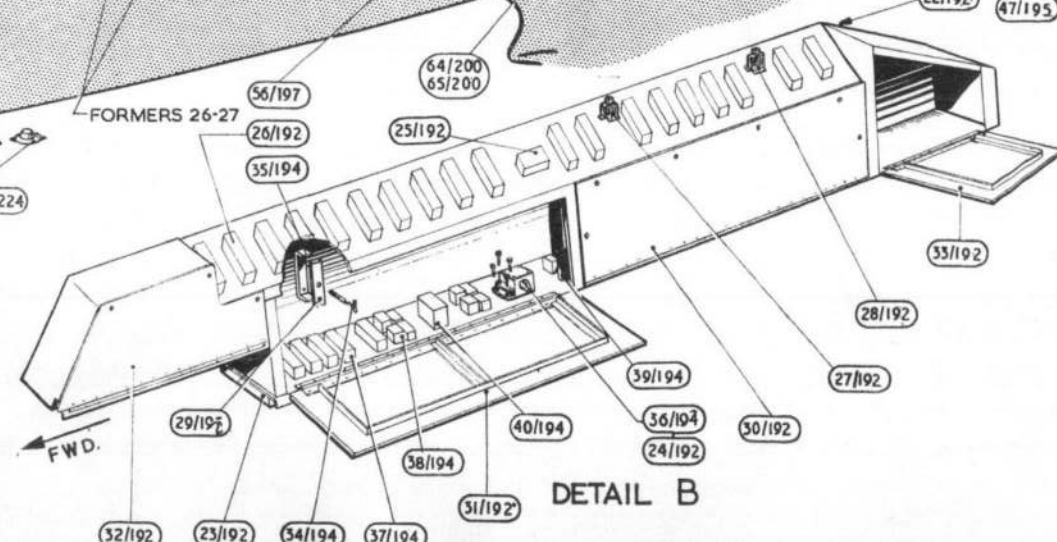
FORMERS 21-22



FORMERS 26-27



DETAIL B

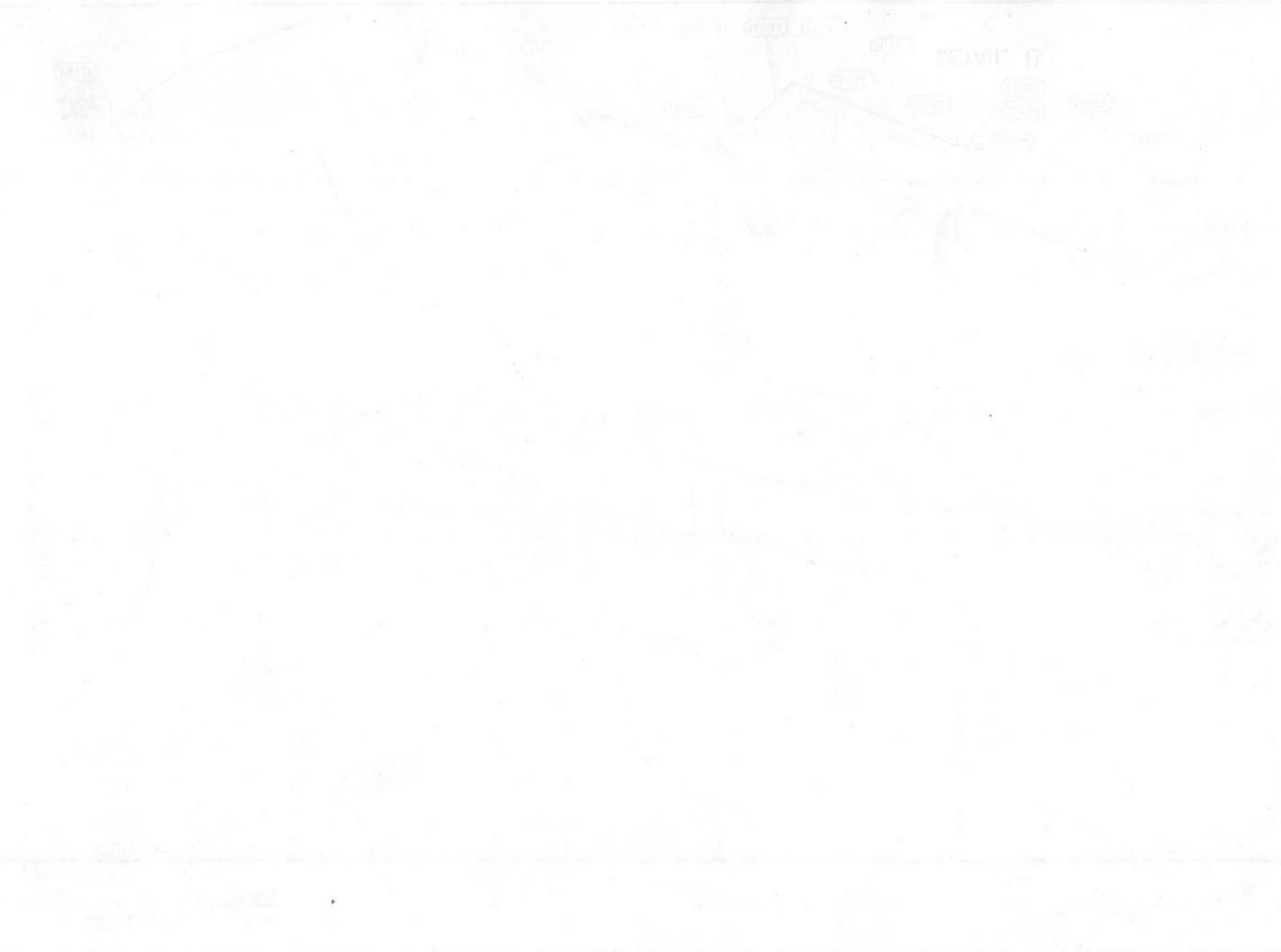


RESTRICTED

RESTRICTED

REPRODUCED

THE
MOUNTAIN



This file was downloaded
from the RTFM Library.
Link: www.scottbouch.com/rtfm
Please see site for usage terms,
and more aircraft documents.

