

RESTRICTED
(FOR OFFICIAL USE ONLY)

AIR PUBLICATION 4267B
VOL. III, PART I

MARCH, 1953
1st EDITION

SHACKLETON M.R. MK.2 AIRCRAFT

SCHEDULE OF
SPARE PARTS

AIR MINISTRY

RESTRICTED

RESTRICTED

(FOR OFFICIAL USE ONLY)

AIR PUBLICATIONS

VOL. III PART I

MARCH 1951

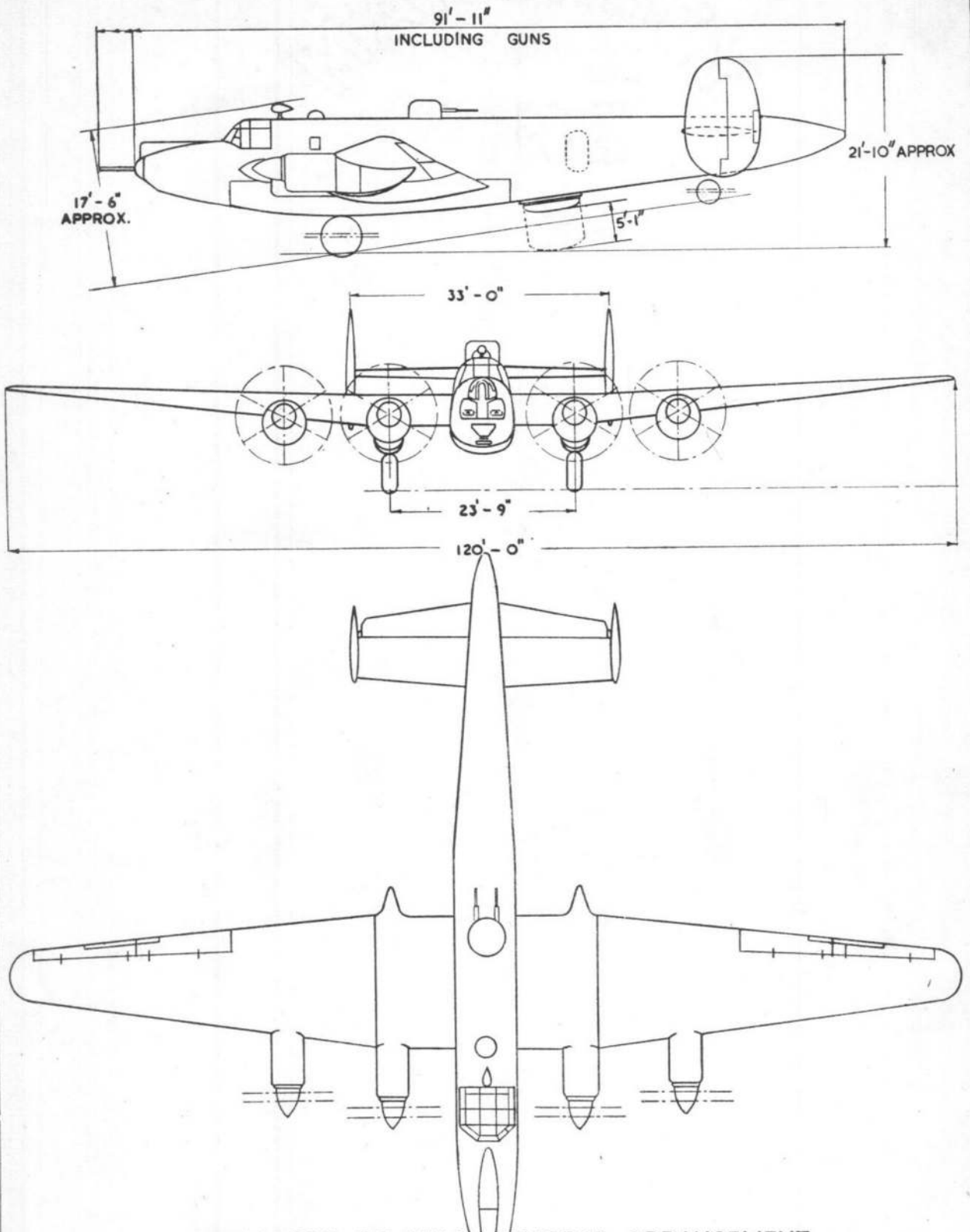
1st EDITION

SHACKLETON M.R. MK.2 AIRCRAFT

SCHEDULE OF
SPARE PARTS

AIR PUBLICATIONS

RESTRICTED



SHACKLETON G.R. MK. 2 - GENERAL ARRANGEMENT

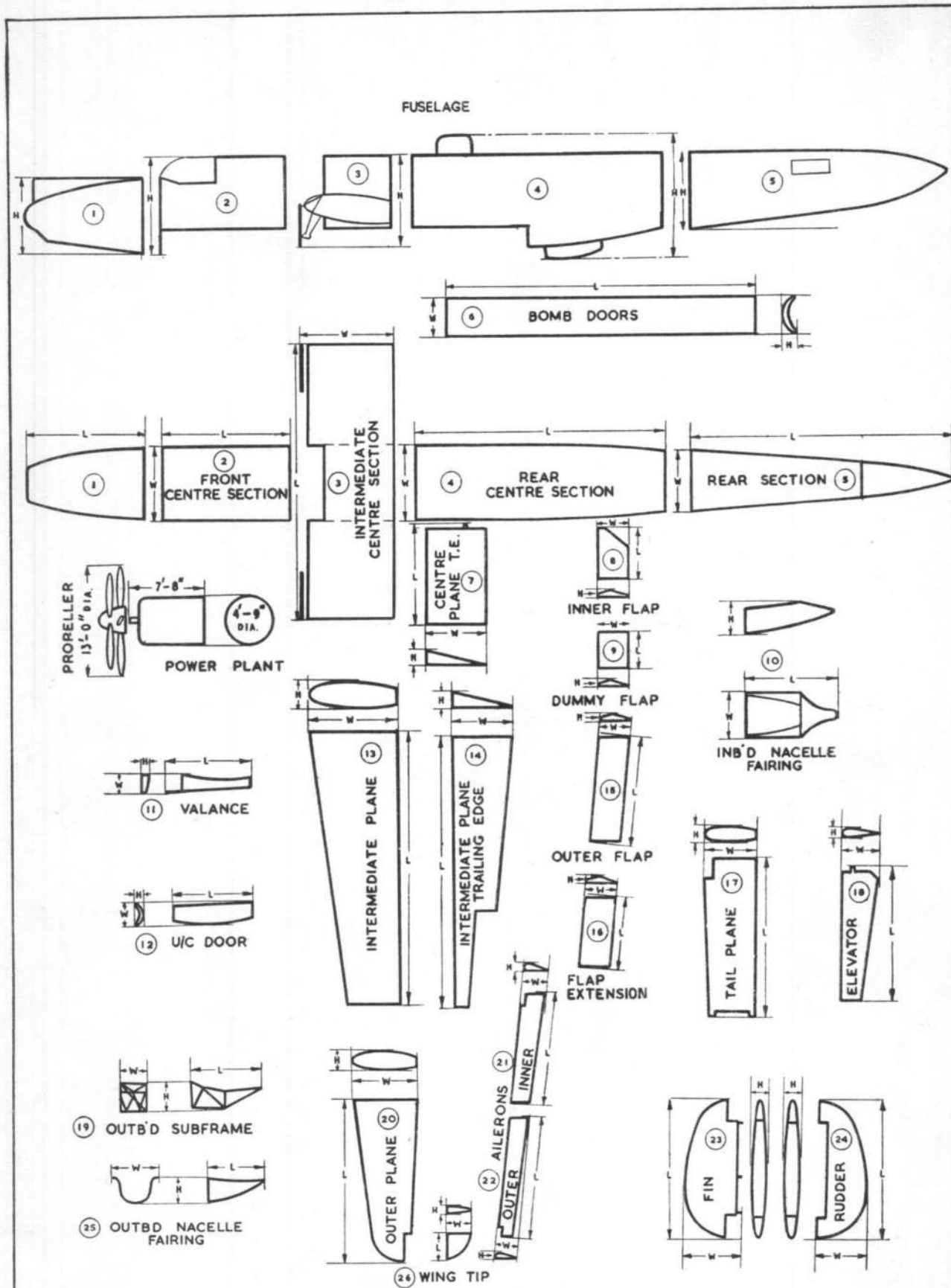
(Data is for storage and packing only)

DUTY :- GENERAL RECONNAISSANCE

TYPE :- MID WING FOUR ENGINED MONOPLANE

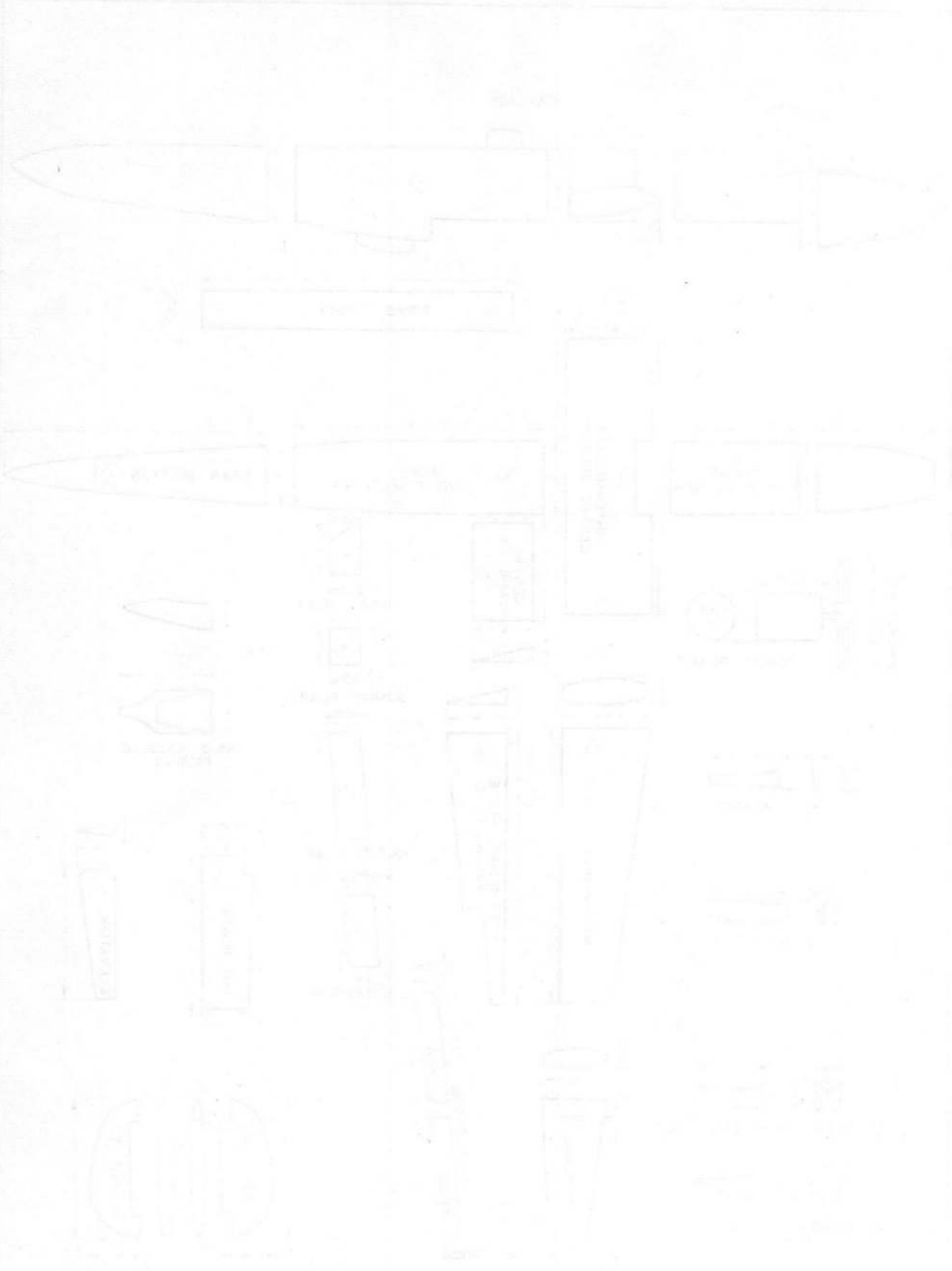
DIMENSIONS			AREAS		
WING SPAN	120' 0"	INCIDENCE MAIN PLANE	4° 0'	MAIN PLANE } SQ. FT. 1421 GROSS	
HEIGHT TAIL UP	21' 10"	INCIDENCE TAIL PLANE	1° 15'	WITHAILERON } 1295 NETT	
HEIGHT TAIL DOWN	16' 10"	DIHEDRAL OUTER WING	4° NOMINAL	AILERONS - TWO - TOTAL	110 .10
CORD AT WING ROOT	16' 0"			REAR SPAR DATUM	3° 3' ACTUAL
CORD AT WING TIP	4' 10"	DIHEDRAL OUTER WING	2° 40' NOMINAL	WITH ELEVATORS	
TAIL PLANE MAX. CORD	10' 0"	TOP SURFACE REAR SPAR	2° 10' ACTUAL	ELEVATORS - TWO - TOTAL	86 .24
TRACK	23' 9"			FINS - TWO - TOTAL	116
				RUDDERS - TWO - TOTAL	106 .4

SECRETARY



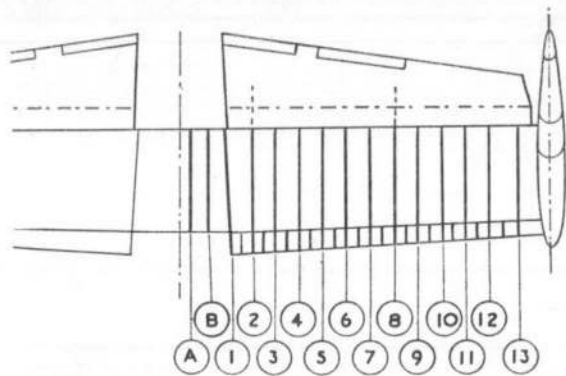
SHACKLETON G.R. MK2.- PACKING DIMENSIONS

	1	2	3	4	5	6	7	8	9	10	11	12	13	14	15	16	17	18	19	20	21	22	23	24	25	26
L-LENGTH	11'-9"	13'-5"	28'-7"	27'-1"	27'-9"	33'-5"	10'-6"	5'-7"	4'-6"	10'-3"	9'-1"	9'-0"	29'-0"	29'-0"	12'-4"	7'-0"	16'-10"	13'-5"	7'-9"	16'-11"	12'-0"	13'-5"	14'-6"	14'-6"	6'-10"	2'-10"
H-HEIGHT	8'-0"	10'-1"	9'-6"	13'-5"	8'-3"	1'-4"	2'-3"	5"	5"	3'-4"	6"	7"	2'-10"	2'-3"	5"	5"	1'-3"	8"	3'-6"	1'-6"	7"	5"	1'-2"	1'-2"	4'-0"	5"
W-WIDTH	7'-9"	7'-9"	9'-9"	7'-9"	6'-3"	5'-0"	6'-6"	3'-4"	3'-4"	4'-3"	1'-10"	3'-0"	9'-9"	6'-6"	3'-3"	3'-3"	6'-5"	3'-11"	3'-1"	7'-6"	3'-1"	2'-4"	5'-11"	5'-5"	5'-0"	2'-5"

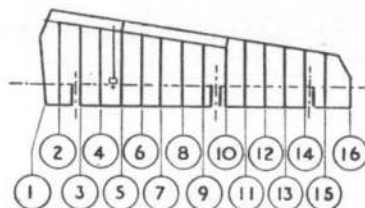


SECTION OF THE SHIP'S HULL

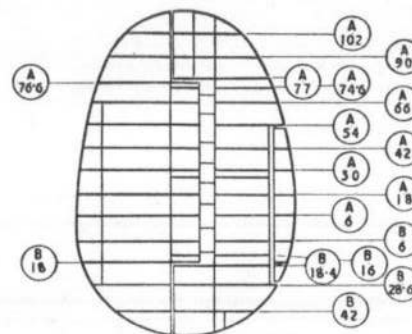
This drawing shows the hull structure of the ship, including the main hull, gun deck, and lower deck. The drawing is oriented vertically on the page.



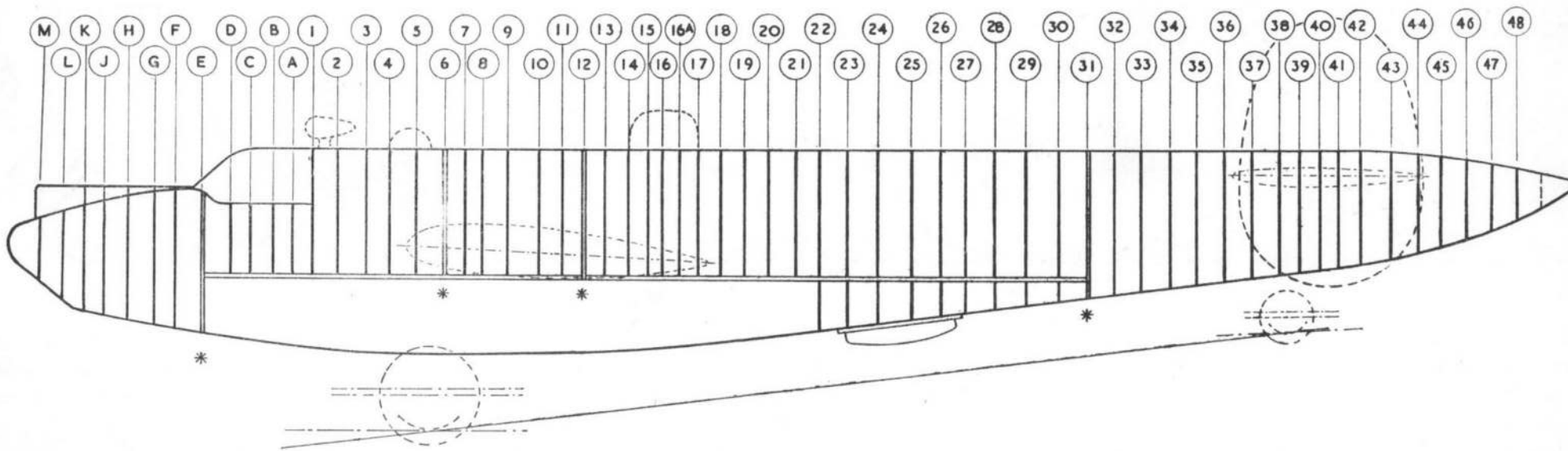
TAIL PLANE



ELEVATOR



FIN & RUDDER



* FUSELAGE JOINTS

SHACKLETON G.R. MK.2 FUSELAGE & TAIL UNIT

RESTRICTED

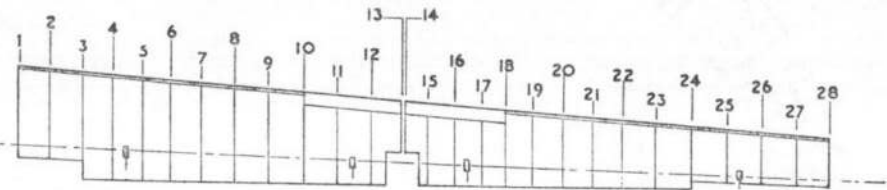
RESTRICTED

UNITED STATES DEPARTMENT OF THE INTERIOR

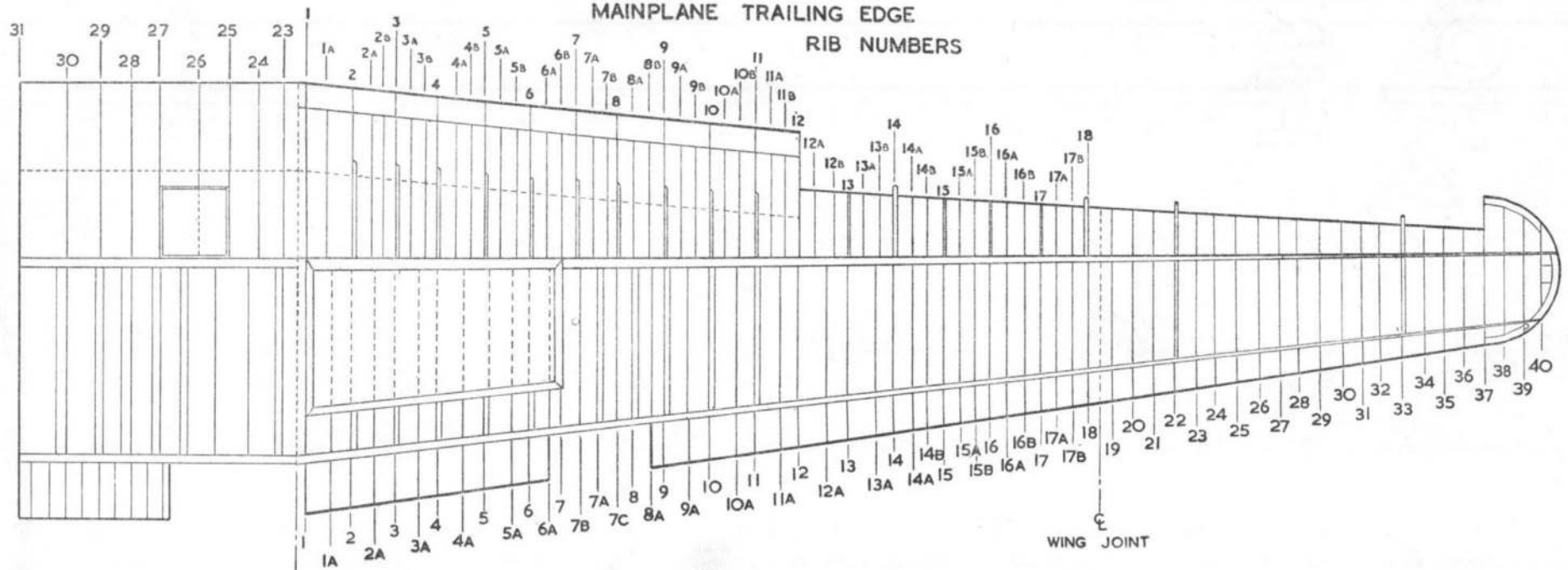
BLANK PAGE

UNITED STATES DEPARTMENT OF THE INTERIOR

AILERON RIB NUMBERS



CENTRE SECTION TRAILING EDGE RIB NUMBERS



MAINPLANE TRAILING EDGE RIB NUMBERS

MAINPLANE RIB NUMBERS

SHACKLETON G.R. MARK 2. MAINPLANE

RESTRICTED

RESTRICTED

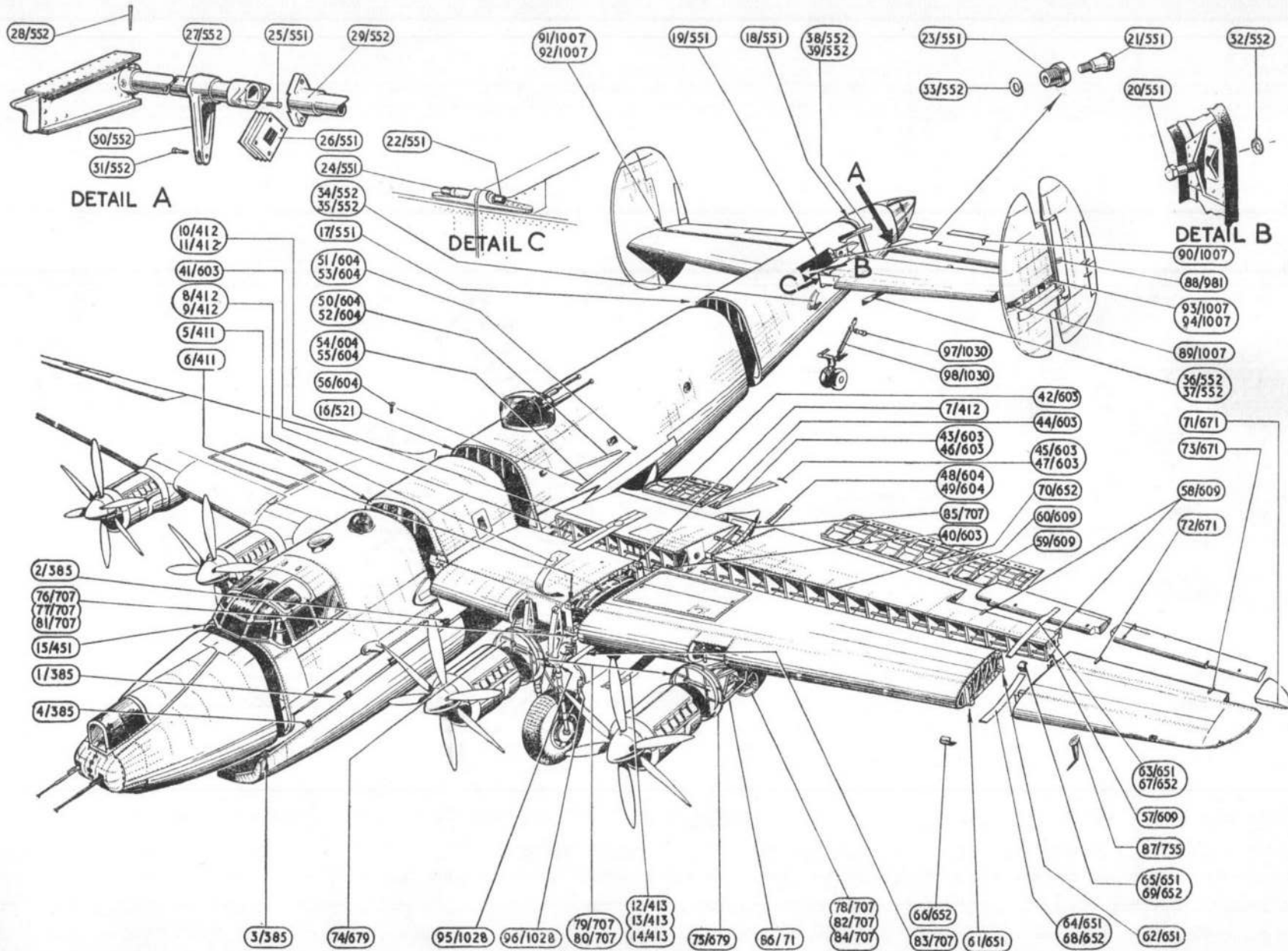
CHUCKLEBROTHERS INC. 1000 N. W. 10TH AVENUE

MEMBER OF THE CHUCKLEBROTHERS GROUP

1000 N. W. 10TH AVENUE



ATTACHMENT
FITTINGS



RESTRICTED

RESTRICTED

WILLIAMS

FLACHNERIA



MEMORANDUM OF INSTRUCTIONS

1. **CONTENTS** This schedule contains a list of parts embodied in the Shackleton G.R. Mark 2 Air frame and has been allocated Section Number 26FP/-.
2. **DEMANDS**

Normally only parts which bear a reference number are to be demanded, but if other parts are required, the Part Number must be shown on the demand.

Demands for parts to make an airframe serviceable must invariably bear the serial number of the airframe.

Certain parts in this schedule do not bear reference numbers. These parts, if required, should be made up from local resources or if the manufacturer of such parts is beyond the capacity of the unit, the parts are to be demanded and the demand endorsed "Unable to manufacture locally".

Certain parts quoted in this schedule are held in other Vocabulary Stores Sections, the relevant section and reference number being shown in the Reference Number column.

Demands are to be made out strictly in accordance with the procedure laid down in Air Publication 830, Volume 1.
3. **EXHAUSTION OF EXISTING STOCKS** An asterisk placed in the Part Number Column against an item or group indicates that further purchases to that design will not be made, but that existing stocks are to be used until exhausted.
4. **COMPILATION OF TEXT**

The multi-indentation system has been used in which the main assembly, consisting of sub-assemblies, groups and detail items indicate their relationship by the indentation of the descriptive titles. This indentation is in accordance with the following outline :—

 - (a) Main Assembly, sub-assemblies, separate groups and detail parts of the main assembly start at the lefthand margin. The main assembly is distinguished by bold capital type from the remainder.
 - (b) First Division—sub-sub assemblies, groups or detail parts of the major breakdown listed in the preceding paragraph are indented one column.
 - (c) Second division—groups or items are indented one further column.
 - (d) Et seq.
5. **NUMBERS OFF** Numerals within a sub-assembly or group indicate the quantity used for one only of that particular group.
6. **MAJOR REPAIR** The letter "M" against a group or part indicates that the item is required only for the major repair purposes and will not normally be held in stock by units other than those carrying out Major Repair work.
7. **FLEXIBLE CABLES** To facilitate the manufacture of flexible cables, a chart showing the particulars of all fittings required is to be found on pages 1031 to 1032.
8. **PIPE LINES** To facilitate the manufacture of pipe lines, a chart showing the necessary particulars of tubing and end fittings required is to be found on pages 1033 to 1058.

MEMORANDUM OF INSTRUCTIONS

- 9. AMENDMENTS** to this schedule will be published by means of Amendment Lists. These amendment lists will be numbered consecutively and Commanding Officers will give the necessary instructions for the upkeep of the schedule and completion of the Amendment Certificate. A statement of all amendment lists distributed during the quarter will be published in Air Ministry Orders.
- 10. PART NUMBERS** When an item or group does not bear a part number in the part number column the drawing on which the item or group is assembled is quoted in parenthesis after the description. This part number, however, must not be quoted on demands.
- 11. INCORPORATED MODIFICATIONS AND AMENDMENTS** See modification and Amendment Record Sheets commencing on Page v.
- 12. SERIAL NUMBER** This schedule is serially numbered and is to be accounted for in accordance with A.M.O. A.772/47.

THE AMENDMENTS PROMULGATED IN THE UNDERMENTIONED
AMENDMENT LISTS HAVE BEEN MADE IN THIS SCHEDULE

Amendment List		Amendments made by	Date
Number	Date		
Amendment Lists 1 to 11 Incorporated.		<i>L. Myer</i>	
12	SEP. 62		1-9-65
13	MAR. 63		"
14	JAN. 64		"

MODIFICATION AND AMENDMENT SHEET

(Airframe)

Mod. No.	A.L. No.	Mod. No.	A.L. No.	Mod. No.	A.L. No.	Mod. No.	A.L. No.	Mod. No.	A.L. No.	Mod. No.	A.L. No.
1 to 151	N.A.	209	N.A.	267	N.A.	325	N.A.	383	N.A.	441	†
152	†	210	†	268	N.A.	326	†	384	†	442	†
153	†	211	†	269	N.A.	327	†	385	†	443	†
154	†	212	†	270	†	328	C	386	N.A.	444	†
155	†	213	N.A.	271	†	329	C	387	†	445	†
156	†	214	†	272	N.A.	330	N.A.	388	N.A.	446	†
157	†	215	†	273	†	331	†	389	N.A.	447	N.A.
158	†	216	†	274	†	332	†	390	†	448	C
159	†	217	†	275	N.A.	333	N.A.	391	N.A.	449	†
160	†	218	†	276	N.A.	334	N.A.	392	†	450	†
161	†	219	†	277	N.A.	335	†	393	†	451	N.A.
162	†	220	†	278	N.A.	336	N.A.	394	N.A.	452	N.A.
163	†	221	†	279	†	337	N.A.	395	N.A.	453	N.A.
164	†	222	N.A.	280	†	338	N.A.	396	7	454	7
165	†	223	†	281	N.A.	339	N.A.	397	†	455	†
166	†	224	N.A.	282	N.A.	340	†	398	N.A.	456	7
167	N.A.	225	†	283	N.A.	341	†	399	†	457	7
168	N.A.	226	†	284	N.A.	342	N.A.	400	N.A.	458	†
169	†	227	†	285	N.A.	343	†	401	N.A.	459	N.A.
170	†	228	†	286	N.A.	344	†	402	†	460	3
171	N.A.	229	N.A.	287	†	345	†	403	N.A.	461	†
172	N.A.	230	N.A.	288	N.A.	346	†	404	†	462	N.A.
173	†	231	N.A.	289	N.A.	347	†	405	†	463	†
174	†	232	†	290	N.A.	348	N.A.	406	†	464	N.A.
175	†	233	†	291	N.A.	349	†	407	†	465	6
176	C	234	†	292	C	350	†	408	†	466	6
177	†	235	N.A.	293	†	351	N.A.	409	†	467	N.A.
178	†	236	†	294	N.A.	352	N.A.	410	N.A.	468	6
179	N.A.	237	†	295	†	353	N.A.	411	N.A.	469	†
180	N.A.	238	†	296	†	354	12	412	†	470	N.A.
181	†	239	†	297	†	355	N.A.	413	N.A.	471	†
182	†	240	N.A.	298	†	356	N.A.	414	†	472	C
183	†	241	N.A.	299	C	357	N.A.	415	†	473	N.A.
184	†	242	†	300	C	358	†	416	†	474	N.A.
185	†	243	†	301	C	359	†	417	†	475	N.A.
186	†	244	†	302	†	360	N.A.	418	N.A.	476	†
187	N.A.	245	N.A.	303	C	361	N.A.	419	†	477	4
188	†	246	†	304	N.A.	362	†	420	†	478	N.A.
189	†	247	N.A.	305	N.A.	363	†	421	†	479	N.A.
190	†	248	†	306	†	364	N.A.	422	†	480	†
191	†	249	†	307	†	365	N.A.	423	C	481	N.A.
192	†	250	†	308	†	366	†	424	N.A.	482	3
193	†	251	N.A.	309	†	367	N.A.	425	N.A.	483	3(A)
194	N.A.	252	†	310	†	368	N.A.	426	N.A.	484	7
195	N.A.	253	†	311	†	369	†	427	†	485	N.A.
196	†	254	†	312	N.A.	370	†	428	†	486	N.A.
197	†	255	N.A.	313	N.A.	371	†	429	†	487	N.A.
198	†	256	N.A.	314	†	372	†	430	N.A.	488	6
199	†	257	†	315	†	373	N.A.	431	†	489	6
200	†	258	†	316	N.A.	374	†	432	†	490	N.A.
201	†	259	†	317	†	375	†	433	†	491	10
202	†	260	†	318	N.A.	376	†	434	N.A.	492	11
203	†	261	†	319	†	377	N	435	N.A.	493	C
204	†	262	†	320	N.A.	378	†	436	C	494	C
205	N.A.	263	N.A.	321	N.A.	379	N.A.	437	N.A.	495	N.A.
206	†	264	†	322	C	380	N.A.	438	†	496	N.A.
207	†	265	†	323	C	381	†	439	†	497	N.A.
208	N.A.	266	N.A.	324	†	382	†	440	†	498	6

SHACKLETON Mk. 2

Page vi

MODIFICATION AND AMENDMENT SHEET

(pp. vii to x not issued)

(Airframe)

Mod. No.	A.L. No.	Mod. No.	A.L. No.	Mod. No.	A.L. No.	Mod. No.	A.L. No.	Mod. No.	A.L. No.	Mod. No.	A.L. No.
499	C	550	7	610	8	858	12				
500	N.A.	551	N.A.	613		860	14				
501	C	552	N.A.	620	13	886	12				
502	C	553	C	628	11	888	13				
503	N.A.	554	N.A.	633	8	892	12				
504	C	555	7	638	9	893	12				
505	C	556	N.A.	640	8	901	12				
506	C	557	C	643	9	915	14				
507	N.A.	558	7	645	9	922	14				
508	4	559	10	655	10	927	12				
509	N.A.	560	C	660	9	929	13				
510	4	561	C	663	10	930	13				
511	6(A)	562	N.A.	668	8	952	14				
512	N.A.	563	7	674	11	953	13				
513	N.A.	564	C	679	9	964	12				
514	C	565	N.A.	689	11	966	14				
515	6(A)	566	N.A.	690	11	967	14				
516	6	567	C	701	10	970	12				
517	N.A.	568	7	703	N.A.	976	13				
518	7	569	N.A.	704	N.A.	978	14				
519	6	570	C	712	10	987	14				
520	6(A)	571	8	719	10	988	14				
521	6	572	8	721	C	1000	14				
522	6	573	N.A.	741		1001	14				
523	N.A.	574	N.A.	757	11	1002	12				
524	11	575	N.A.	761		1005	13				
525	N.A.	576	7	768	11	1014	14				
526	7	577	7	771	11	1015	12				
527	C	578	7	774	11	1025	14				
528	10	579	7	775	11	1031	14				
529	N.A.	580	N.A.	787	12	1052	14				
530	7	581	7	791		1071	14				
531	N.A.	582	N.A.	792	C						
532	N.A.	583	N.A.	795	C						
533	N.A.	584	N.A.	796							
534	N.A.	585	N.A.	801	11						
535	N.A.	586	C	803	13						
536	N.A.	587	C	811	11						
537	N.A.	588	N.A.	814	13						
538	7	589	N.A.	815	11						
539	7	590	N.A.	816	13						
540	N.A.	591	N.A.	818	11						
541	N.A.	592	8	821	13						
542	N.A.	593	N.A.	825	11						
543	N.A.	594	C	850	12						
544	N.A.	595		856	14						
545	N.A.	596	N.A.								
546	N.A.	597	N.A.								
547	N.A.	598	N.A.								
548	7	599	7								
549	N.A.	600	11								

† Incorporated in initial issue of Schedule.
 NA Modification/Amendment not applicable to this Schedule.
 C Modification/Amendment cancelled.

This file was downloaded
from the RTFM Library.

Link: www.scottbouch.com/rtfm

Please see site for usage terms,
and more aircraft documents.

