

INSTALLATION FITTINGS

AND ACCESSORIES AL.7 _____ AVON 113 AND 115

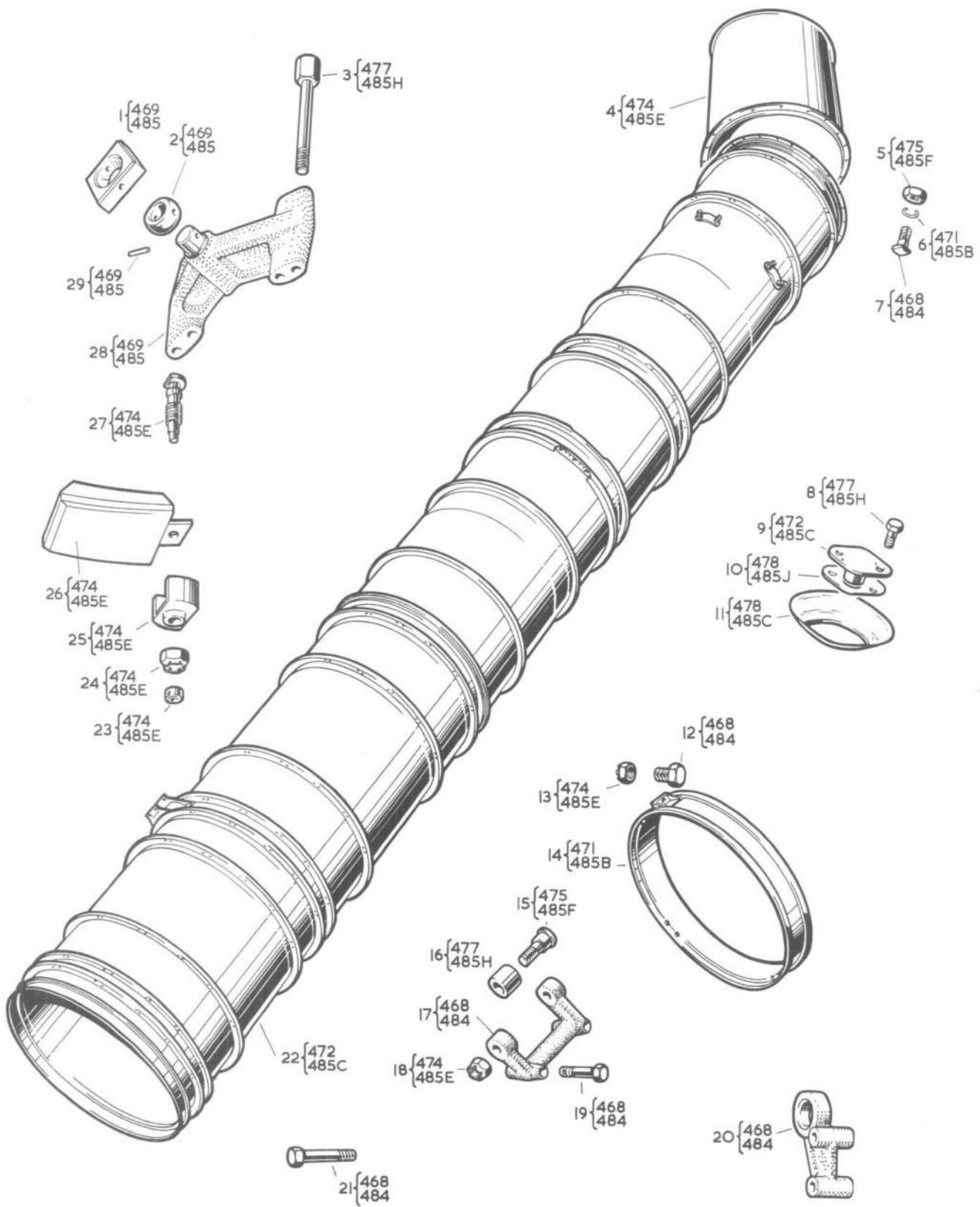
Avon 113 only. Al-2.

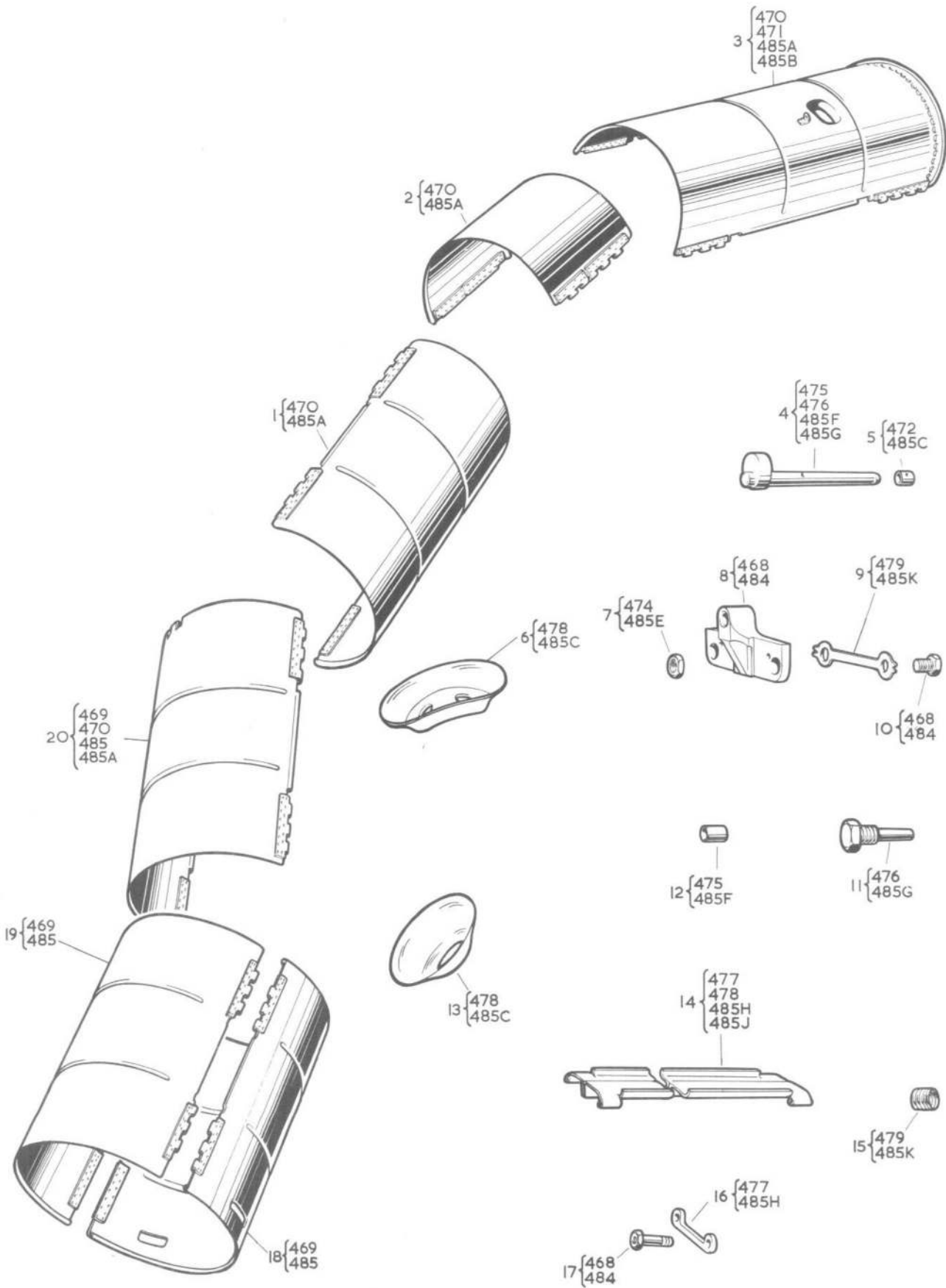
INSTALLATION FITTINGS AND ACCESSORIES
Hunter F.MK.1 AND F.MK.4

REF. No.	PART No.	DESCRIPTION	No. OF	MATERIAL SPEC.	CL. OF	PL. 3
<u>INSTALLATION FITTINGS</u>						
3349	BA.45726	BALL, control joint, Shut-off cock lever Throttle valve lever	1 1	N.S.	C	65/3
3347	BA.45682	HOUSING, control joint, Shut-off cock lever Throttle valve lever	1 1	N.S.	C	65/2
36JJ/2300	KL.3637	NUT, castellated, .250" B.S.F. Shut-off cock lever Throttle valve lever	2 2	M.S.	C	1/1
28P/12431	KB.6853) SP.9/C6)	PIN, split, .062" dia. x .750" long, Shut-off cock lever castellated nut retaining Throttle valve lever castellated nut retaining	2 2	St.Stl.	C	1/16
3350	BA.45683	PLATE, stud Shut-off cock lever Throttle valve lever	1 1	M.S.	C	65/4
3348	BA.45790	STUD, shouldered, .250" x 1.387" long, Shut-off cock lever Throttle valve lever	1 1	N.S.	C	65/1
36JJ/2895	K.8833	WASHER, plain, .525" o/dia. x .260" i/dia. x .018" thick, Shut-off cock lever Throttle valve lever	2 2	St.Stl.	C	1/5

Hunter
(AVON 115 only)

REF. No.	PART No.						DESCRIPTION	No. OFF	MATL. SPEC.	M.R. CL of ST	PL. & ILL. No.
		1	2	3	4	5					
<u>INSTALLATION FITTINGS</u>											
3349	BA.45726						BALL, control joint, shut-off cock lever	1	N.S.	C	65/3
3347	BA.45682						HOUSING, control joint, shut-off cock lever	1	N.S.	C	65/2
36JJ/2300	KL.3637						NUT, castellated, .250" B.S.F. shut-off cock lever	2	M.S.	C	1/1
28P/12431	KB.6853) SP.9/C6)						PIN, split, .062" dia. x .750" long, shut-off cock lever castellated nut retaining	2	St.Stl.	C	1/16
3350	BA.45683						PLATE, stud shut-off cock lever	1	M.S.	C	65/4
3348	BA.45790						STUD, shouldered, .250" x 1.387" long, shut-off cock lever	1	N.S.	C	65/1
36JJ/2895	K.8833						WASHER, plain, .525" o/dia. x .260" i/dia. x .018" thick, shut-off cock lever	2	St.Stl.	C	1/5





REF. No.	PART No.						DESCRIPTION	No. OFF	MATL. SPEC.	M.R. CL. of ST.	PL. & ILL. No
		1	2	3	4	5					
<u>JET PIPE</u>											
3653	BA.55061						JET PIPE, COMPLETE WITH INSTALLATION FITTINGS - ASSEMBLY	1	-	A	
903	BA.10616						Bolt, 2 B.A. x .400" long, slinging channel securing	1	St.Stl.	M/C	66/12
1412	BA.21621						Bolt, 2 B.A. x .900" long, Section 2 insulation casing support bracket securing	4	N.S.	M/C	67/17
							Section 3 insulation casing support bracket securing	4			
							Section 4 insulation casing support bracket securing	4			
1404	RJ.8686						Bolt, Front insulation casing support bracket securing	8	N.S.	M/C	67/10
							Rear insulation casing support bracket securing	4			
							Section 2 insulation casing support bracket securing	4			
							Section 3 insulation casing support bracket securing	4			
							Section 4 insulation casing support bracket securing	4			
3178	BK.12529						Bolt, .250" x 1.425" long, handling rail bracket securing	2	N.S.	C	66/19
1417	BA.18865						Bolt, 2 B.A. x .950" long, bracket and distance piece securing	4	N.S.	M/C	66/21
881	BA.12245						Bolt, .250" x .500" long, propelling nozzle to main casing securing	24	N.S.	M/C	66/7
3365	BA.24264						Bolt, .250" x 1.525" long, lifting eye bracket securing	4	N.S.	M/C	66/21
4360	BA.49410						Bracket, eye lifting	2	C.I.	M/C	66/20
3332	BA.34054						Bracket, handling rail, jet pipe to aircraft securing	1	M.S.	C	66/17
1399	BA.21056						Bracket, supporting		M.S.	M/C	67/8
							Front insulation casing	8			
							Rear insulation casing	8			
							Section 2 insulation casing	6			
							Section 3 insulation casing	6			
							Section 4 insulation casing	4			
1410	BA.21622						Bracket, supporting		M.S.	M/C	67/8
							Section 2 insulation casing	2			
							Section 3 insulation casing	2			

REF. No.	PART No.	DESCRIPTION					No OFF	MATEL SPEC	M/C	PL & ILL. No
		1	2	3	4	5				
<u>JET PIPE - CONTINUED</u>										
3333	BA.37828	BRACKET, MOUNTING - ASSEMBLY					2	-	M/A	
4732	BK.7182	Bearing, mounting block					2	P.B.	M/C	66/2
-	BK.7181	Block, mounting bracket					2	St.Stl.		66/1
-	BA.37827	Bracket, mounting					2	St.Stl.		66/28
4734	BK.6522	Pin, bearing retaining					2	St.Stl.	M/C	66/29
4361	BA.49187	CASING, INSULATION, TOP HALF, FRONT - ASSEMBLY					1	-	M/A	67/19
-	BA.49188	Casing, insulation					1	Dural		
-	BA.10391	Wire, beading					2	Alum		
-	BA.25284	Wire, beading					2	Alum		
-	BA.30418	Hinge, insulation casing No.1 section					2	St.Stl.		
-	BA.30419	Hinge, insulation casing No.1 section					2	St.Stl.		
-	BA.565	Rivet, hinge securing					64	Alum		
-	BA.30420	Stiffener, hinge insulation casing, No.1 section					4	St.Stl.		
4362	BA.49189	CASING, INSULATION, BOTTOM HALF, FRONT - ASSEMBLY					1	-	M/A	67/18
-	BA.49190	Casing, insulation					1	Dural		
-	BA.10391	Wire, beading					2	Alum		
-	BA.25284	Wire, beading					2	Alum		
-	BA.30418	Hinge, insulation casing, No.1 section					2	St.Stl.		
-	BA.30419	Hinge, insulation casing, No.1 section					2	St.Stl.		
-	BA.565	Rivet, hinge securing					64	Alum		
-	BA.30420	Stiffener, hinge					4	St.Stl.		
3654	BA.45261	CASING, INSULATION, TOP HALF, NO.2 SECTION - ASSEMBLY					1	-	M/A	67/20
-	BA.45262	Casing, insulation					1	Alclad		
-	BA.10391	Wire, beading					2	Alum		
-	BA.25284	Wire, beading					2	Alum		
-	BA.30418	Hinge, insulation casing					2	St.Stl.		
-	BA.30419	Hinge, insulation casing					2	St.Stl.		
-	BA.565	Rivet, hinge securing					64	Alum		
-	BA.30420	Stiffener, hinge					4	St.Stl.		

JET PIPE - CONTINUED

3655	BA.45263	CASING, INSULATION, BOTTOM HALF, NO.2 SECTION - ASSEMBLY	1	-	M/A 67/20
-	BA.45264	Casing, insulation	1	Alclad	
-	BA.10391	Wire, beading	2	Alum	
-	BA.25284	Wire, beading	2	Alum	
-	BA.30418	Hinge, insulation casing	2	St.Stl.	
-	BA.30419	Hinge, insulation casing	2	St.Stl.	
-	BA.565	Rivet, hinge securing	64	Alum	
-	BA.30420	Stiffener, hinge	4	St.Stl.	
3187	BA.35524	CASING, INSULATION, NO.3 SECTION - ASSEMBLY	2	-	M/A 67/1
-	BA.35525	Casing, insulation	2	Alclad	
-	BA.10391	Wire, beading	2	Alum	
-	BA.23754	Wire, beading	4	Alum	
-	BA.25284	Wire, beading	4	Alum	
-	BA.30418	Hinge, insulation casing	4	St.Stl.	
-	BA.30419	Hinge, insulation casing	4	St.Stl.	
-	BA.565	Rivet, hinge securing	128	Alum	
-	BA.30420	Stiffener, hinge	8	St.Stl.	
3327	BA.35485	CASING, INSULATION, NO.4 SECTION - ASSEMBLY	2	-	M/A 67/2
-	BA.35474	Casing, insulation	2	Alclad	
-	BA.10391	Wire, beading	2	Alum	
-	BA.23754	Wire, beading	4	Alum	
-	BA.11469	Hinge, insulation casing	2	St.Stl.	
-	BA.24772	Hinge, insulation casing	2	St.Stl.	
-	BA.30418	Hinge, insulation casing	2	St.Stl.	
-	BA.30419	Hinge, insulation casing	2	St.Stl.	
-	BA.565	Rivet, hinge securing	106	Alum	
-	BA.11531	Stiffener, hinge	2	St.Stl.	
-	BA.24773	Stiffener, hinge	2	St.Stl.	
-	BA.30420	Stiffener, hinge	4	St.Stl.	
3656	BA.45265	CASING, INSULATION, REAR SECTION, TOP - ASSEMBLY	1	-	M/A 67/3
-	BA.45266	Casing, insulation, rear top	1	Dural	
-	BA.10391	Wire, beading	2	Alum	
-	BA.25285	Wire, beading	2	Alum	
-	BA.30418	Hinge, insulation casing	1	St.Stl.	
-	BA.30419	Hinge, insulation casing	1	St.Stl.	

Cont'd.

REF. No.	PART No.						DESCRIPTION	No. OFF	MATL. SPEC.	M.R. CL of ST.	PL. & ILL. No.
		1	2	3	4	5					
<u>JET PIPE - CONTINUED</u>											
cont'd.											
-	BA.30460					Hinge, insulation casing	1	St.Stl.			
-	BA.30461					Hinge, insulation casing	1	St.Stl.			
-	BK.3352					Lug, locking wire	2	St.Stl.			
-	EK.12390					Plate, lug, stiffening	2	St.Stl.			
-	BA.565					Rivet, hinge stiffening	70	Alum			
-	BA.566					Rivet, locking wire lug securing	4	Alum			
-	BA.30420					Stiffener, hinge	2	St.Stl.			
-	BA.30462					Stiffener, hinge	2	St.Stl.			
3657	BA.45267					CASING, INSULATION, REAR SECTION, BOTTOM - ASSEMBLY	1	-	M/A	67/3	
-	BA.45268					Casing, insulation, rear bottom	1	Dural			
-	BA.10391					Wire, locking	2	Alum			
-	BA.25285					Wire, locking	2	Alum			
-	BA.30418					Hinge, insulation casing	1	St.Stl.			
-	BA.30419					Hinge, insulation casing	1	St.Stl.			
-	BA.30460					Hinge, insulation casing	1	St.Stl.			
-	BA.30461					Hinge, insulation casing	1	St.Stl.			
-	BK.3352					Lug, locking wire	3	St.Stl.			
-	BK.12390					Plate, lug stiffening	3	St.Stl.			
-	BA.565					Rivet, hinge securing	70	Alum			
-	BA.566					Rivet, locking wire lug securing	6	Alum			
-	BA.30420					Stiffener, hinge	2	St.Stl.			
-	BA.30462					Stiffener, hinge	2	St.Stl.			
3190	BA.41870					CHANNEL, SLINGING AND BRACKET - ASSEMBLY	1	-	M/C	66/14	
-	BA.10270					Bracket, slinging	2	St.Stl.			
-	BA.41868					Channel, slinging	1	St.Stl.			
882	BL.2569 *					Circlip, propelling nozzle to main casing securing bolts (Pre-Mod.639)	24	St.Stl.	M/C	66/6	
8040	BA.68935					Circlip, propelling nozzle to main casing securing bolts (Mod.639)	24	St.Stl.	C		
3191	BA.27627					Coil, 'Nichrome' wire, .250" dia. x 5 T.P.I., wrapped with 'Alfol' foil, .015 mm. thick	as reqd	-	M/C		

S.O.S.P.104

QTY	PART NO	DESCRIPTION	MATERIAL	PL. NO.	
				1	2
<u>JET PIPE - CONTINUED</u>					
890	BA.1221	Collar,	St.Stl.	M/C	67/5
		Section 1 front, insulation casing hinge pin retaining	2		
		Section 1 rear, insulation casing hinge pin retaining	2		
		Section 2 top, insulation casing hinge pin retaining	2		
		Section 2 bottom, insulation casing hinge pin retaining	2		
		Section 3 insulation casing hinge pin retaining	4		
		Section 4 insulation casing hinge pin retaining	2		
		Rear section insulation casing hinge pin retaining	4		
36Q/412	BK.3346	Flange, blanking, pitot tube adaptor	1	St.Stl.	M/C 66/9
36Q/590	BK.27625	Foil, "Alfol" flat, .007 m/m thick	as reqd	-	M/C
36Q/591	BA.27626	Foil, "Alfol" corrugated, .015 m/m thick	as reqd	-	M/C
-	BA.45258	JET PIPE - ASSEMBLY	1	-	66/22
4371	BA.24076	ADAPTOR AND SOLEPLATE, PRESSURE MEASUREMENT - ASSEMBLY	1	-	M/C
-	BA.21448	Adaptor, pressure measurement	1	St.Stl.	
-	BA.21447	Soleplate, pressure measurement	1	St.Stl.	
4376	BA.37834	Boss, setscrew securing	4	St.Stl.	M/C
4369	BA.35477	Bracket, stiffening, support bracket	1	St.Stl.	M/C
4368	BA.35476	Bracket, supporting roller bracket	2	St.Stl.	M/C
-	BA.39117	Casing, No.1	1	St.Stl.	
-	BA.22749	Casing, No.2	1	St.Stl.	
-	BA.45259	Casing, No.3	1	St.Stl.	
-	BA.22749	Casing, No.4	1	St.Stl.	
-	BA.22750	Casing, No.5	1	St.Stl.	
-	BA.35468	Casing, No.6	1	St.Stl.	
-	BA.45260	Casing, No.7	1	St.Stl.	

REF. No.	PART No.						DESCRIPTION	No. OFF	MATL SPEC	MR CL of ST	PL. & ILL. No.
		1	2	3	4	5					
<u>JET PIPE - CONTINUED</u>											
4372	BA.24077						FLANGE, DISTANCE AND SOLEPLATE - ASSEMBLY	1	-	M/C	
-	BK.3347						Flange, distance	1	St.Stl.		
-	BA.1203						Soleplate, distance flange	1	St.Stl.		
4363	BA.39903)						Flange, front jet pipe	1	St.Stl.	M/C	
	or										
	BA.49230)										
4377	BA.1177						Flange, rear jet pipe	1	St.Stl.	M/C	
	or										
	BA.49231										
4373	BA.35601						Ring, support, slinging channel	1	St.Stl.	M/C	
36Q/2107	BA.12038						SOLEPLATE AND THERMOCOUPLE, CONNECTIONS SECTION 7 - ASSEMBLY	4	-	M/C	
-	BT.1004						Connection, thermocouple	8	St.Stl.		
-	BA.12036						Soleplate, thermocouple connection	4	St.Stl.		
4364	BA.24252*						Stiffener, No.1 section (Pre-Mod.692)	1	St.Stl.	M/C	
8354	BA.69514						Stiffener, No.1 section (Mod.692)	1	St.Stl.	M/C	
4367	BA.23610						Stiffener,	-	St.Stl.	M/C	
							No.2 casing	2			
							No.3 casing	4			
							No.4 casing	1			
							No.5 casing	3			
							No.6 casing	1			
							No.7 casing	2			
4374	BA.37832						Stiffener, No.5 casing	2	St.Stl.	M/C	
4375	BA.37833						Strip, strengthening, No.5 casing stiffener	2	St.Stl.	M/C	
4365	BA.24253						Strip, strengthening, rear stiffener	2	St.Stl.	M/C	
4366	BA.24254						Strip, strengthening, rear stiffener	2	St.Stl.	M/C	
4370	BA.27615						Strip, strengthening, support bracket	2	St.Stl.	M/C	

S.O.S.P.104

REF. No	PART No	DESCRIPTION					No. OF	MATERIAL SPEC.	M.C. CL. ST	FL & ALL N
		1	2	3	4	5				
<u>JET PIPE - CONTINUED</u>										
3192	BA.39904	KEEP PLATE AND STIRRUP - ASSEMBLY					2	-	C	
	BA.39907	Bolt, stirrup and keep plate securing					2	N.S.		66/27
	BA.33908	Collar, stirrup securing bolt					2	St.Stl.		66/23
	BA.39905	Keep plate					2	N.S.		66/26
	BA.37831	Nut, stirrup and keep plate securing					2	St.Stl.		66/24
36HH/6197	KB.3852	Pin, taper, collar to bolt securing					2	St.Stl.	C	
	BA.39906	Stirrup, keep plate securing					2	St.Stl.		66/25
3330	BA.45987	NOZZLE, PROPELLING - ASSEMBLY					1	-	M/A	66/4
	BA.45988	Casing, propelling nozzle					1	St.Stl.		
	BA.1247	Wire, beading					1	St.Stl.		
	BA.1178	Flange, front					1	St.Stl.		
	or									
	BA.49307									
904	BK.5790	Nut, castellated, 2 B.A. slinging channel bolt securing					1	St.Stl.	M/C	66/13
3194	BA.18839	Nut, castellated, .252", Handling rail bracket securing					2	St.Stl.	C	66/18
		Handling rail bracket roller pin securing					2			
493	BK.5172	Nut, lock, 2 B.A.						St.Stl.	M/C	67/7
		Front section support bracket bolt securing					8			
		Front section bracket retaining pin securing					8			
		No.2 section support bracket bolt securing					4			
		No.2 section bracket retaining pin securing					8			
		No.3 section support bracket bolt securing					4			
		No.3 section bracket retaining pin securing					8			
		No.4 section support bracket bolt securing					4			
		Rear section support bracket bolt securing					8			
		Rear section bracket retaining pin securing					8			

REF. No	PART NO.	DESCRIPTION	QTY	MATL. SPEC.	REMARKS	PL. & ALL. NO.
<u>JET PIPE - CONTINUED</u>						
188	RJ.7548	Nut, lock, .250", propelling nozzle to main casing securing	24	St.Stl.	M/C	66/5
1411	BA.18859	Piece, distance, No.2 casing support bracket plate	2	St.Stl.	M/C	67/12
		No.3 casing support bracket plate	2			
		No.4 casing support bracket plate	2			
		Rear section casing support bracket plate	2			
3196	BA.34055	Pin, handling rail bracket roller retaining	2	St.Stl.	C	66/15
900	BA.11372	PIN, HINGE AND COLLAR - ASSEMBLY NO.1 SECTION, FRONT	2	-	M/C	67/4
		NO.2 SECTION	2			
		NO.3 SECTION	2			
		REAR SECTION	2			
-	BA.1220	Collar	8	St.Stl.		
-	BA.11365	Pin, hinge	8	St.Stl.		
1977	BA.30417	PIN, HINGE AND COLLAR - ASSEMBLY NO.1 SECTION, REAR	2	-	M/C	67/4
		NO.2 SECTION, REAR	2			
		NO.3 SECTION	2			
-	BA.1220	Collar	6	St.Stl.		
-	BA.30416	Pin, hinge	6	St.Stl.		
3329	BA.35487	PIN, HINGE AND COLLAR, NO.4 SECTION - ASSEMBLY	2	-	M/C	67/4
-	BA.1220	Collar	2	St.Stl.		
-	BA.35478	Pin, hinge	2	St.Stl.		

REF. No.	PART No.						DESCRIPTION	No. OFF	MATL. SPEC.	M.R. CL of ST	PL. & ILL. No.
		1	2	3	4	5					
<u>JET PIPE - CONTINUED</u>											
909	BA.11370						PIN, HINGE AND COLLAR, REAR SECTION - ASSEMBLY	2	-	M/C	67/4
-	BA.1220						Collar	2	St.Stl.		
-	BA.11363						Pin, hinge	2	St.Stl.		
1402	BA.21617*						Pin, screwed (Pre-Mod.586)	-	N.S.	C	67/11
1395	BA.20606						Pin, screwed (Mod.586)	-	N.S.	C	
							Front insulation casing support bracket securing	8			
							No.2 insulation casing support bracket securing	8			
							No.3 insulation casing support bracket securing	8			
							Rear insulation casing support bracket securing	8			
28P/12587	KB.6851) SP.9/C4)						Pin, split, .062" dia. x .500" long, slinging channel bolt securing nut retaining	1	St.Stl.	M/C	1/16
28P/12349	KB.6852) SP.9/C5)						Pin, split, .062" dia. x .825" long, Section 1 front insulation casing hinge pin collar retaining	2	St.Stl.	M/C	1/16
							Section 1 rear insulation casing hinge pin collar retaining	2			
							Section 2 insulation casing hinge pin collar retaining	2			
							Section 2 rear insulation casing hinge pin collar retaining	2			
							Section 3 insulation casing hinge pin collar retaining	4			
							Section 4 insulation casing hinge pin collar retaining	2			
							Rear section insulation casing hinge pin collar retaining	4			
							Handling rail bracket castellated nut retaining	2			
							Handling rail bracket roller pin securing nut retaining	2			

S.O.S.P.104

REF. No.	PART No.						DESCRIPTION	No. OFF	MATL. SPEC.	M.R. CL of ST	PL. & ILL. No.
		1	2	3	4	5					
<u>JET PIPE - CONTINUED</u>											
28P/12431	KB.6853) SP.9/C6)						Pin, split, .062" dia. x .750" long, stirrup and keep plate securing bolt to nut retaining	2	St.Stl.	M/C	1/16
1413	BA.21620						Plate, retaining, Section 2 support brackets securing bolts Section 3 support brackets securing bolts Section 4 support brackets securing bolts	2 2 2 2	St.Stl.	M/C	67/16
36JJ/3007	KB.5826						PLUG, BLANKING, PRESSURE MEASUREMENT ADAPTOR - ASSEMBLY	1	-	M/C	1/31
37L/1725	K.5226						Nut, sleeve	1	St.Stl.	M/C	
28P/12587	KB.6851) SP.9/C4)						Pin, split, .062" dia. x .500" long	1	St.Stl.	M/C	1/16
37L/1724	KB.5801						Plug, blanking	1	St.Stl.	M/C	
36JJ/3009	KB.5829						PLUG, BLANKING, THERMOCOUPLE CONNECTIONS - ASSEMBLY	4	-	M/C	1/31
36HH/11152	KB.5229						Nut, sleeve	4	St.Stl.	M/C	
28P/12431	KB.6853) SP.9/C6)						Pin, split, .062" dia. x .750" long	4	St.Stl.	M/C	1/16
37C/66015	KB.5804						Plug, blanking	4	St.Stl.	M/C	
3198	BK.16685						Roller, handling rail bracket	2	Al.B.	M/C	66/16
3199	BA.37835						Screw, suspension bracket to main casing securing	8	St.Stl.	M/C	66/3
36Q/1594	BK.15092						Screw, .250" x .350" long, pitot tube adaptor blanking flange securing	2	St.Stl.	M/C	66/8
3334	BA.39346						STIFFENER, INSULATION CASING FRONT SECTION - ASSEMBLY	2	-	M/C	67/14
-	BA.39120						Stiffener	4	St.Stl.		
1414	BA.18871						STIFFENER - ASSEMBLY SECTION 2 INSULATION CASING SECTION 3 INSULATION CASING	2 2	-	M/C	67/14
-	BA.18857						Stiffener	4	St.Stl.		
-	BA.23766						Stiffener	4	St.Stl.		
(ALG) 9124	BA48191						Plate name, 3rd page 103 Avon	1	-	M/C	

REF. No.	PART No.						DESCRIPTION	No. OFF	MATL. SPEC.	M.R. CL of ST.	PL. & ILL. No.
		1	2	3	4	5					
<u>JET PIPE - CONTINUED</u>											
3331	BA.35566						STIFFENER, INSULATION CASING REAR SECTION - ASSEMBLY	2	-	M/C	67/14
-	BA.35564						Stiffener	2	St.Stl.		
-	BA.35565						Stiffener	2	St.Stl.		
885	BA.12037						Washer, cup, insulating thermo-couple connections	4	Alum	M/C	67/6
36JJ/2387	BT.2644						Washer, cup, insulating, pressure measurement adaptor	1	Alum	M/C	67/13
36JJ/2389	BT.4520						Washer, cup, insulating, pitot tube adaptor	1	Alum	C	66/11
36JJ/3107	BK.3345						Washer, joint, pitot connection blanking flange	1	Copper	C	66/10
56DD/30357	KJ.8804						Washer, plain, .450" o/dia. x .195" i/dia. x .018" thick, slinging channel bolt securing nuts	2	N.S.	M/C	1/5
36JJ/2895	K.8833						Washer, plain, .525" o/dia. x .260" i/dia. x .018" thick, roller pin securing nuts	2	St.Stl.	C	1/5
36DD/46026	KB.7104						Washer, tab, .190" i/dia. x .022" thick, Front insulation casing support brackets securing nuts locking	16			
							No.2 insulation casing support brackets securing nuts locking	16			
							No.3 insulation casing support brackets securing nuts locking	16			
							No.4 insulation casing support brackets securing nuts locking	8			
							Rear insulation casing support brackets securing nuts locking	16			

S.O.S.P. 104

REF. No.	PART No.						DESCRIPTION	No. OFF	MATL. SPEC.	M.R. CL of ST	PL. & ILL. No.
		1	2	3	4	5					
<u>JET PIPE - CONTINUED</u>											
36DD/48651	KB.7106						Washer, tab, .255" i/dia. x .032" thick, Propelling nozzle to main casing securing nuts locking Suspension bracket to main casing securing screws locking Blanking flange pitot tube adaptor securing screws locking	24 8 2	St.Stl.	C	1/10
1405	BA.20610						Washer, tab, double, .190" i/dia. x .022" thick, Bracket securing bolt Front insulation casing support brackets securing nuts locking No.2 insulation casing support bracket securing nuts locking No.3 insulation casing support brackets securing nuts locking No.4 insulation casing support brackets securing nuts locking Rear insulation casing support brackets securing nuts locking	4 8 6 6 2 8	St.Stl.	M/C	67/9
30A/3055	-						Wire, locking, 22 S.W.G.	as rqd	St.Stl.	C	
PARTS REQUIRED FOR TRANSPORTATION OF A COMPLETE JET PIPE											
36JJ/1165	BT.2918						CAP, dust, thermocouple connection	4	Tinplate	C	67/15
1953	GE.2028 Sheet 8						CASE PACKING, JET PIPE (This item is shown for accounting purposes only, and is not to be demanded by Units without Air Ministry Authority)	1	-	A	

S.O.S.P.104

REF. No.	PART No.						DESCRIPTION	No. OFF	MATL. SPEC.	M.R. CL. ST	PL. S ILL. No.
		1	2	3	4	5					
						<u>JET PIPE</u>					
8619	BA.72789					JET PIPE, COMPLETE WITH INSTALLATION FITTINGS - ASSEMBLY	1	-	A		
903	BA.10616					Bolt, 2 B.A. x .400" long, slinging channel securing	1	St.Stl.	M/C	66/12	
1412	BA.21621					Bolt, 2 B.A. x .900" long, Section 2 insulation casing support bracket securing	-	N.S.	M/C	67/17	
						Section 3 insulation casing support bracket securing	4				
						Section 4 insulation casing support bracket securing	4				
1404	RJ.8686					Bolt, Front insulation casing support bracket securing	-	N.S.	M/C	67/10	
						Rear insulation casing support bracket securing	8				
						Section 2 insulation casing support bracket securing	4				
						Section 3 insulation casing support bracket securing	4				
						Section 4 insulation casing support bracket securing	4				
3178	BK.12529					Bolt, .250" x 1.425" long, handling rail bracket securing	2	N.S.	C	66/19	
1417	BA.18865					Bolt, 2 B.A. x .950" long, bracket and distance piece securing	4	N.S.	M/C	66/21	
881	BA.12245					Bolt, .250" x .500" long, propelling nozzle to main casing securing	24	N.S.	M/C	66/7	
3365	BA.24264					Bolt, .250" x 1.525" long, lifting eye bracket securing	4	N.S.	M/C	66/21	
4360	BA.49410					Bracket, eye lifting	2	C.I.	M/C	66/20	
3332	BA.34054					Bracket, handling rail, jet pipe to aircraft securing	1	M.S.	C	66/17	
1399	BA.21056					Bracket, supporting, Front insulation casing	-	M.S.	M/C	67/8	
						Rear insulation casing	8				
						Section 2 insulation casing	8				
						Section 3 insulation casing	6				
						Section 4 insulation casing	6				
1410	BA.21622					Bracket, supporting, Section 2 insulation casing	-	M.S.	M/C	67/8	
						Section 3 insulation casing	2				
							2				

REF. No.	PART No.						DESCRIPTION	No. OFF	MATL. SPEC.	M.R. CL of ST.	PL. & ILL. No.
		1	2	3	4	5					
<u>JET PIPE - CONTINUED</u>											
3333	BA.37828						BRACKET, MOUNTING - ASSEMBLY	2	-	M/A	
4732	BK.7182						Bearing, mounting block	2	P.B.	M/C	66/2
-	BK.7181						Block, mounting bracket	2	St.Stl.		66/1
-	BA.37827						Bracket, mounting	2	St.Stl.		66/28
4734	BK.6522						Pin, bearing retaining	2	St.Stl.	M/C	66/29
4361	BA.49187						CASING, INSULATION, TOP HALF, FRONT - ASSEMBLY	1	-	M/A	67/19
-	BA.49188						Casing, insulation	1	Dural		
-	BA.10391						Wire, beading	2	Alum		
-	BA.25284						Wire, beading	2	Alum		
-	BA.30418						Hinge, insulation casing No.1 section	2	St.Stl.		
-	BA.30419						Hinge, insulation casing No.1 section	2	St.Stl.		
-	BA.565						Rivet, hinge securing	64	Alum		
-	BA.30420						Stiffener, hinge insulation casing, No.1 section	4	St.Stl.		
4362	BA.49189						CASING, INSULATION, BOTTOM HALF, FRONT - ASSEMBLY	1	-	M/A	67/18
-	BA.49190						Casing, insulation	1	Dural		
-	BA.10391						Wire, beading	2	Alum		
-	BA.25284						Wire, beading	2	Alum		
-	BA.30418						Hinge, insulation casing, No.1 section	2	St.Stl.		
-	BA.30419						Hinge, insulation casing, No.1 section	2	St.Stl.		
-	BA.565						Rivet, hinge securing	64	Alum		
-	BA.30420						Stiffener, hinge	4	St.Stl.		
3654	BA.45261						CASING, INSULATION, TOP HALF, NO.2 SECTION - ASSEMBLY	1	-	M/A	67/20
-	BA.45262						Casing, insulation	1	Alclad		
-	BA.10391						Wire, beading	2	Alum		
-	BA.25284						Wire, beading	2	Alum		
-	BA.30418						Hinge, insulation casing	2	St.Stl.		
-	BA.30419						Hinge, insulation casing	2	St.Stl.		
-	BA.565						Rivet, hinge securing	64	Alum		
-	BA.30420						Stiffener, hinge	4	St.Stl.		

REF. No.	PART No.						DESCRIPTION	No. OFF	MATL. SPEC.	M.R. CL. of ST.	PL. & ILL. No
		1	2	3	4	5					
<u>JET PIPE - CONTINUED</u>											
3655	BA.45263						CASING, INSULATION, BOTTOM HALF NO.2 SECTION - ASSEMBLY	1	-	M/A	67/20
-	BA.45264						Casing, insulation	1	Alclad		
-	BA.10391						Wire, beading	2	Alum		
-	BA.25284						Wire, beading	2	Alum		
-	BA.30418						Hinge, insulation casing	2	St.Stl.		
-	BA.30419						Hinge, insulation casing	2	St.Stl.		
-	BA.565						Rivet, hinge securing	64	Alum		
-	BA.30420						Stiffener, hinge	4	St.Stl.		
3187	BA.35524						CASING, INSULATION, NO.3 SECTION - ASSEMBLY	2	-	M/A	67/1
-	BA.35525						Casing, insulation	2	Alclad		
-	BA.10391						Wire, beading	2	Alum		
-	BA.23754						Wire, beading	4	Alum		
-	BA.25284						Wire, beading	4	Alum		
-	BA.30418						Hinge, insulation casing	4	St.Stl.		
-	BA.30419						Hinge, insulation casing	4	St.Stl.		
-	BA.565						Rivet, hinge securing	128	Alum		
-	BA.30420						Stiffener, hinge	8	St.Stl.		
3327	BA.35485						CASING, INSULATION, NO.4 SECTION - ASSEMBLY	2	-	M/A	67/2
-	BA.35474						Casing, insulation	2	Alclad		
-	BA.10391						Wire, beading	2	Alum		
-	BA.23754						Wire, beading	4	Alum		
-	BA.11469						Hinge, insulation casing	2	St.Stl.		
-	BA.24772						Hinge, insulation casing	2	St.Stl.		
-	BA.30418						Hinge, insulation casing	2	St.Stl.		
-	BA.30419						Hinge, insulation casing	2	St.Stl.		
-	BA.565						Rivet, hinge securing	106	Alum		
-	BA.11531						Stiffener, hinge	2	St.Stl.		
-	BA.24773						Stiffener, hinge	2	St.Stl.		
-	BA.30420						Stiffener, hinge	4	St.Stl.		
3656	BA.45265						CASING, INSULATION, REAR SECTION TOP - ASSEMBLY	1	-	M/A	67/3
-	BA.45266						Casing, insulation, rear top	1	Dural		
-	BA.10391						Wire, beading	2	Alum		
-	BA.25285						Wire, beading	2	Alum		
-	BA.30418						Hinge, insulation casing	1	St.Stl.		
-	BA.30419						Hinge, insulation casing	1	St.Stl.		
Cont'd.											

REF. No.	PART No.						DESCRIPTION	No. OFF	MATL. SPEC.	M.R. CL of ST.	PL. & ILL. No.
		1	2	3	4	5					
						<u>JET PIPE - CONTINUED</u>					
						Cont'd.					
-	BA.30460					Hinge, insulation casing	1	St.Stl.			
-	BA.30461					Hinge, insulation casing	1	St.Stl.			
-	BK.3352					Lug, locking wire	2	St.Stl.			
-	BK.12390					Plate, lug stiffening	2	St.Stl.			
-	BA.565					Rivet, hinge stiffening	70	Alum			
-	BA.566					Rivet, locking wire lug securing	4	Alum			
-	BA.30420					Stiffener, hinge	2	St.Stl.			
-	BA.30462					Stiffener, hinge	2	St.Stl.			
9125	BA.78209					CASING, INSULATION, REAR SECTION BOTTOM - ASSEMBLY (MOD. JP 23)	1	-		M/A	67/3
-	BA.45268					Casing, insulation, rear bottom	1	Dural			
-	BA.10391					Wire, locking	2	Alum			
-	BA.25285					Wire, locking	2	Alum			
-	BA.30418					Hinge, insulation casing	1	St.Stl.			
-	BA.30419					Hinge, insulation casing	1	St.Stl.			
-	BA.30460					Hinge, insulation casing	1	St.Stl.			
-	BA.30461					Hinge, insulation casing	1	St.Stl.			
-	BK.3352					Lug, locking wire	3	St.Stl.			
-	BK.12390					Plate, lug stiffening	3	St.Stl.			
-	BA.78414					Plate, backing nameplate	1	St.Stl.			
9126	BA.78207					Plate, name 'Jet Pipe 106 Avon'	1	N.Sil.		M/C	
-	BA.565					Rivet, hinge securing	70	Alum			
-	BA.566					Rivet, locking wire lug securing	6	Alum			
-	PP.33879					Rivet, nameplate securing	4	Alum			
-	BA.30420					Stiffener, hinge	2	St.Stl.			
-	BA.30462					Stiffener, hinge	2	St.Stl.			
3190	BA.41870					CHANNEL, SLINGING AND BRACKET - ASSEMBLY	1	-		M/C	66/14
-	BA.10270					Bracket, slinging	2	St.Stl.			
-	BA.41868					Channel, slinging	1	St.Stl.			
8064	BA.68935					Circlip, propelling nozzle to main casing securing bolts retaining	24	St.Stl.		M/C	66/6
3191	-					Coil, 'Nichrome' wire, .250" dia. x 5 T.P.I. wrapped with 'Alfol' foil, .015 mm. thick	as reqd	-		M/C	

REF. No.	PART No.						DESCRIPTION	No. OFF	MATL. SPEC.	M.R. CL of ST.	PL. & ILL. No.
		1	2	3	4	5					
						<u>JET PIPE - CONTINUED</u>					
890	BA.1221					Collar, Section 1 front, insulation casing hinge pin retaining Section 1 rear, insulation casing hinge pin retaining Section 2 top, insulation casing hinge pin retaining Section 2 bottom, insulation casing hinge pin retaining Section 3 insulation casing hinge pin retaining Section 4 insulation casing hinge pin retaining Rear section insulation casing hinge pin retaining	- 2 2 2 2 4 2 4	St.Stl.	M/C	67/5	
885	BA.12037					Cup, sealing, thermocouple connections	4	Alum	M/C	67/6	
36JJ/2387	BT.2644					Cup, sealing, pressure measurements adaptor	1	Alum	M/C	67/13	
36JJ/2389	BT.4520					Cup, sealing, pitot connection blanking flange	1	Alum	M/C	66/11	
36Q/412	BK.3346					Flange, blanking, pitot tube adaptor	1	St.Stl.	M/C	66/9	
36Q/590	-					Foil, 'Alfol' flat, .007 mm. thick	as rqd	-	M/C		
36Q/591	-					Foil, 'Alfol' corrugated, .015 mm. thick	as rqd	-	M/C		
-	BA.45258					JET PIPE - ASSEMBLY	1	-		66/22	
4371	BA.24076					ADAPTOR AND SOLEPLATE, PRESSURE MEASUREMENT - ASSEMBLY	1	-	M/C		
-	BA.21448					Adaptor, pressure measurement	1	St.Stl.			
-	BA.21447					Soleplate, pressure measurement	1	St.Stl.			
4376	BA.37834					Boss, setscrew securing	4	St.Stl.	M/C		
4369	BA.35477					Bracket, stiffening, support bracket	1	St.Stl.	M/C		
4368	BA.35476					Bracket, supporting roller bracket	2	St.Stl.	M/C		
-	BA.39117					Casing, No.1	1	St.Stl.			
-	BA.22749					Casing, No.2	1	St.Stl.			
-	BA.45259					Casing, No.3	1	St.Stl.			
-	BA.22749					Casing, No.4	1	St.Stl.			
-	BA.22750					Casing, No.5	1	St.Stl.			
-	BA.35468					Casing, No.6	1	St.Stl.			
-	BA.45260					Casing, No.7	1	St.Stl.			

REF. No.	PART No.						DESCRIPTION	No. OFF	MATL. SPEC.	M.R. CL. of ST.	PL. & ILL. No.
		1	2	3	4	5					
<u>JET PIPE - CONTINUED</u>											
4372	BA.24077						FLANGE, DISTANCE AND SOLEPLATE - ASSEMBLY	1	-	M/C	
-	BK.3347						Flange, distance	1	St.Stl.		
-	BA.1203						Soleplate, distance flange	1	St.Stl.		
4363	BA.39903						Flange, front jet pipe	1	St.Stl.	M/C	
	or										
4363	BA.49230						Flange, rear jet pipe	1	St.Stl.	M/C	
4377	BA.1177										
	or										
4377	BA.49231						Ring, support, slinging channel	1	St.Stl.	M/C	
4373	BA.35601										
36Q/2107	BA.12038						SOLEPLATE AND THERMOCOUPLE CONNECTIONS SECTION 7 - ASSEMBLY	4	-	M/C	
-	BT.1004						Connection, thermocouple	8	St.Stl.		
-	BA.12036						Soleplate, thermocouple connection	4	St.Stl.		
8354	BA.69514						Stiffener, No.1 section	1	St.Stl.	M/C	
4367	BA.23610						Stiffener,	-	St.Stl.	M/C	
							No.2 casing	2			
							No.3 casing	4			
							No.4 casing	1			
							No.5 casing	3			
							No.6 casing	1			
							No.7 casing	2			
4374	BA.37832						Stiffener, No.5 casing	2	St.Stl.	M/C	
4375	BA.37833						Strip, strengthening, No.5 casing stiffener	2	St.Stl.	M/C	
4365	BA.24253						Strip, strengthening, rear stiffener	2	St.Stl.	M/C	
4366	BA.24254						Strip, strengthening, rear stiffener	2	St.Stl.	M/C	
4370	BA.27615						Strip, strengthening, support bracket	2	St.Stl.	M/C	

REF. No.	PART No.						DESCRIPTION	No. OFF	MATL. SPEC.	M.R. CL of ST.	PL. & ILL. No
		1	2	3	4	5					
<u>JET PIPE - CONTINUED</u>											
3192	BA.39904						KEEP PLATE AND STIRRUP - ASSEMBLY	2	-	C	
8043	BA.39907						Bolt, stirrup and keep plate securing	2	N.S.	C	66/27
8044	BA.33908						Collar, stirrup securing bolt	2	St.Stl.	C	66/23
-	BA.39905						Keep plate	2	N.S.		66/26
-	BA.37831						Nut, stirrup and keep plate securing	2	St.Stl.		66/24
36HH/6197	KB.3852						Pin, taper, collar to bolt securing	2	St.Stl.	C	1/13
-	BA.39906						Stirrup, keep plate securing	2	St.Stl.		66/25
8804	BA.73012						NOZZLE, PROPELLING - ASSEMBLY	1	-	M/A	66/4
-	BA.73013						Casing, propelling nozzle	1	St.Stl.		
-	BA.1178						Flange, front	1	St.Stl.		
-	BA.49307						or				
-	BA.73014						Flange, rear	1	St.Stl.		
904	BK.5790						Nut, castellated, 2 B.A. slinging channel bolt securing	1	St.Stl.	M/C	66/13
3194	BA.18839						Nut, castellated, .252", Handling rail bracket securing	-	St.Stl.	C	66/18
							Handling rail bracket roller pin securing	2			
493	BK.5172						Nut, lock, 2 B.A.	-	St.Stl.	M/C	67/7
							Front section support bracket bolt securing	8			
							Front section bracket retaining pin securing	8			
							No.2 section support bracket bolt securing	4			
							No.2 section bracket retaining pin securing	8			
							No.3 section support bracket bolt securing	4			
							No.3 section bracket retaining pin securing	8			
							No.4 section support bracket bolt securing	4			
							Rear section support bracket bolt securing	8			
							Rear section bracket retaining pin securing	8			

REF. No.	PART No.						DESCRIPTION	No. OFF	MATL. SPEC.	M.R. CL of ST.	PL. & ILL. No.
		1	2	3	4	5					
<u>JET PIPE - CONTINUED</u>											
188	RJ. 7548						Nut, lock, .250", propelling nozzle to main casing securing	24	St.Stl.	M/C	66/5
1411	BA. 18859						Piece, distance, No.2 casing support bracket plate No.3 casing support bracket plate No.4 casing support bracket plate Rear section casing support bracket plate	- 2 2 2 2	St.Stl.	M/C	67/12
3196	BA. 34055						Pin, handling rail bracket roller retaining	2	St.Stl.	C	66/15
900	BA. 11372						PIN, HINGE AND COLLAR - ASSEMBLY NO.1 SECTION, FRONT NO.2 SECTION NO.3 SECTION REAR SECTION	- 2 2 2 2	-	M/C	67/4
-	BA. 1220						Collar	8	St.Stl.		
-	BA. 11365						Pin, hinge	8	St.Stl.		
1977	BA. 30417						PIN, HINGE AND COLLAR - ASSEMBLY NO.1 SECTION, REAR NO.2 SECTION, REAR NO.3 SECTION	- 2 2 2	-	M/C	67/4
-	BA. 1220						Collar	6	St.Stl.		
-	BA. 30416						Pin, hinge	6	St.Stl.		
3329	BA. 35487						PIN, HINGE AND COLLAR, NO.4 SECTION - ASSEMBLY	2	-	M/C	67/4
-	BA. 1220						Collar	2	St.Stl.		
-	BA. 35478						Pin, hinge	2	St.Stl.		

REF. No.	PART No.						DESCRIPTION	No. OFF	MATL. SPEC.	M.R. CL of ST.	PL. & ILL. No.
		1	2	3	4	5					
<u>JET PIPE - CONTINUED</u>											
909	BA.11370						PIN, HINGE AND COLLAR, REAR SECTION - ASSEMBLY	2	-	M/C	67/4
-	BA.1220						Collar	2	St.Stl.		
-	BA.11363						Pin, hinge	2	St.Stl.		
1395	BA.20606						Pin, screwed	-	N.S.	M/C	67/11
							Front, insulation casing support bracket securing	8			
							No.2 insulation casing support bracket securing	8			
							No.3 insulation casing support bracket securing	8			
							Rear insulation casing support bracket securing	8			
28P/12587	KB.6851) SP.9/C4)						Pin, split, .062" dia. x .500" long, slinging channel bolt securing nut retaining	1	St.Stl.	M/C	1/16
28P/12349	KB.6852) SP.9/C5)						Pin, split, .062" dia. x .825" long, Section 1 front insulation casing hinge pin collar retaining	- 2	St.Stl.	M/C	1/16
							Section 1 rear insulation casing hinge pin collar retaining	2			
							Section 2 insulation casing hinge pin collar retaining	2			
							Section 2 rear insulation casing hinge pin collar casing	2			
							Section 3 insulation casing hinge pin collar retaining	4			
							Section 4 insulation casing hinge pin collar retaining	2			
							Rear section insulation casing hinge pin collar retaining	4			
							Handling rail bracket castellated nut retaining	2			
							Handling rail bracket roller pin securing nut retaining	2			

REF. No.	PART No.						DESCRIPTION	No. OFF	MATL. SPEC.	M.R. CL. of ST.	PL. & ILL. No.
		1	2	3	4	5					
<u>JET PIPE - CONTINUED</u>											
28P/12431	KB.6853) SP.9/C6)						Pin, split, .062" dia. x .750" long, stirrup and keep plate securing bolt to nut retaining	2	St.Stl.	M/C	1/16
1413	BA.21620						Plate, retaining, Section 2 support brackets securing bolts Section 3 support brackets securing bolts Section 4 support brackets securing bolts	- 2 2 2	St.Stl.	M/C	67/16
36JJ/3007	KB.5826						PLUG, BLANKING, PRESSURE MEASUREMENT ADAPTOR - ASSEMBLY	1	-	M/C	1/31
37L/1725	KB.5226						Nut, sleeve	1	St.Stl.	M/C	
28P/12587	KB.6851) SP.9/C4)						Pin, split, .062" dia. x .500" long	1	St.Stl.	M/C	1/16
37L/1724	KB.5801						Plug, blanking	1	St.Stl.	M/C	
36JJ/3009	KB.5829						PLUG, BLANKING, THERMOCOUPLE CONNECTIONS - ASSEMBLY	4	-	M/C	1/31
36HH/11152	KB.5229						Nut, sleeve	4	St.Stl.	M/C	
28P/12431	KB.6853) SP.9/C6)						Pin, split, .062" dia. x .750" long	4	St.Stl.	M/C	1/16
37C/66015	KB.5804						Plug, blanking	4	St.Stl.	M/C	
3198	BK.16685						Roller, handling rail bracket	2	Al.B.	M/C	66/16
3199	BA.37835						Screw, suspension bracket to main casing securing	8	St.Stl.	M/C	66/3
36Q/1594	BK.15092						Screw, .250" x .350" long, pitot tube adaptor blanking flange securing	2	St.Stl.	M/C	66/8
3334	BA.39346						STIFFENER, INSULATION CASING FRONT SECTION - ASSEMBLY	2	-	M/C	67/14
-	BA.39120						Stiffener	4	St.Stl.		
1414	BA.18871						STIFFENER - ASSEMBLY SECTION 2 INSULATION CASING SECTION 3 INSULATION CASING	- 2 2	-	M/C	67/14
-	BA.18857						Stiffener	4	St.Stl.		
-	BA.23766						Stiffener	4	St.Stl.		

REF. No.	PART No.						DESCRIPTION	No. OFF	MATL. SPEC.	M.R. CL of ST.	PL. & ILL. No.
		1	2	3	4	5					
<u>JET PIPE - CONTINUED</u>											
3331	BA.35566						STIFFENER, INSULATION CASING REAR SECTION - ASSEMBLY	2	-	M/C	67/14
-	BA.35564						Stiffener	2	St.Stl.		
-	BA.35565						Stiffener	2	St.Stl.		
36JJ/3107	BK.3345						Washer, joint, pitot connection blanking flange	1	Copper	C	66/10
56DD/30357	KJ.8804						Washer, plain, .450" o/dia. x .195" i/dia. x .018" thick, slinging channel bolt securing nuts	2	N.S.	M/C	1/5
36JJ/2895	K.8833						Washer, plain, .525" o/dia. x .260" i/dia. x .018" thick, roller pin securing nuts	2	St.Stl.	C	1/5
36DD/46026	KB.7104						Washer, tab, .190" i/dia. x .022" thick, Front insulation casing support brackets securing nuts locking	16			
							No.2 insulation casing support brackets securing nuts locking	16			
							No.3 insulation casing support brackets securing nuts locking	16			
							No.4 insulation casing support brackets securing nuts locking	8			
							Rear insulation casing support brackets securing nuts locking	16			

REF. No.	PART No.						DESCRIPTION	No. OFF	MATL. SPEC.	M.R. CL of ST.	PL. & ILL. No.
		1	2	3	4	5					
<u>JET PIPE - CONTINUED</u>											
36DD/48651	KB.7106					Washer, tab, .255" i/dia x .032" thick, Propelling nozzle to main casing securing nuts locking Suspension bracket to main casing securing screws locking Blanking flange pitot tube adaptor securing screws locking	- 24 8 2	St.Stl.	C	1/10	
1405	BA.20610					Washer, tab, double, .190" i/dia. x .022" thick, Bracket securing bolt Front insulation casing support brackets securing nuts locking No.2 insulation casing support bracket securing nuts locking No.3 insulation casing support brackets securing nuts locking No.4 insulation casing support brackets securing nuts locking Rear insulation casing support brackets securing nuts locking	- 4 8 6 6 2 8	St.Stl.	M/C	67/9	
30A/3055	-					Wire, locking, 22 S.W.G.	as reqd	St.Stl.	C		
PARTS REQUIRED FOR TRANSPORTATION OF A COMPLETE JET PIPE											
36JJ/1165	BT.2918					CAP, dust, thermocouple connection	4	Tinplate	C	67/15	
1953	GE.2028 Sheet 8					CASE PACKING, JET PIPE (This item is shown for accounting purposes only, and is not to be demanded by Units without Air Ministry Authority)	1	-	A		

This file was downloaded
from the RTFM Library.
Link: www.scottbouch.com/rtfm
Please see site for usage terms,
and more aircraft documents.

