

SECTION 7

ARMAMENT INSTALLATION

LIST OF CHAPTERS

Note—A detailed list of contents appears at the beginning of each chapter

1 Pyrotechnics

RESTRICTED

Chapter I PYROTECNICS

LIST OF CONTENTS

	Para.
Introduction	1
Signal pistol	2
Loading	3
Unloading	4
Removal and replacement	5
Signal cartridge stowage	6
Window cartridge stowage	7
Engine starter cartridge stowage	8
Aircraft destructor stowage	9
Canopy and escape hatch explosive bolts	10
Snatch unit explosive collar	11

ILLUSTRATION

	Fig.
Signal pistol	1

Introduction

1. This chapter gives a general description of the pyrotechnics and associated equipment of the aircraft.

Signal pistol

2. A 1½ in. pressure cabin signal pistol Mk.1 is installed in an airtight mounting in the centre of the navigator's escape hatch, it is held in position by bayonet fittings and locked by a small catch, enabling it to be readily removed for use as a hand pistol. The construction of the pistol permits it to be loaded, fired and unloaded in its mounting without loss of cabin pressure; it is locked in both the loaded and unloaded positions.

Loading

3. The pistol is normally carried in the aircraft, when not in use, in its unloaded condition. To load, insert a cartridge into the breech, close the breech by rotating the

handgrip, ensuring that it is locked by the catch B (*fig. 1*), depress the thumb-piece A on the right-hand side of the pistol and rotate the breech portion downwards until it is locked in position. The pistol is now ready for firing.

Unloading

4. The pistol cannot be unloaded when in its firing position. To unload, depress the thumb-piece A (*fig. 1*) on the left-hand side of the pistol and rotate the breech portion upwards until it is locked in position, depress the catch B and open the breech by rotating the handgrip. Remove the cartridge case.

Removal and replacement

5. To remove the pistol from its mounting in the navigator's escape hatch, depress the catch C (*fig. 1*), rotate the pistol in an anti-clockwise direction through an angle of 45 degrees and pull it downwards. To replace, pass the barrel of the pistol upwards through the aperture in the hatch, line up the bayonet fittings and rotate it clockwise until locked in position by the catch.

Signal cartridge stowage

6. A stowage for six signal cartridges is mounted on the port side of the fuselage at the navigator's station.

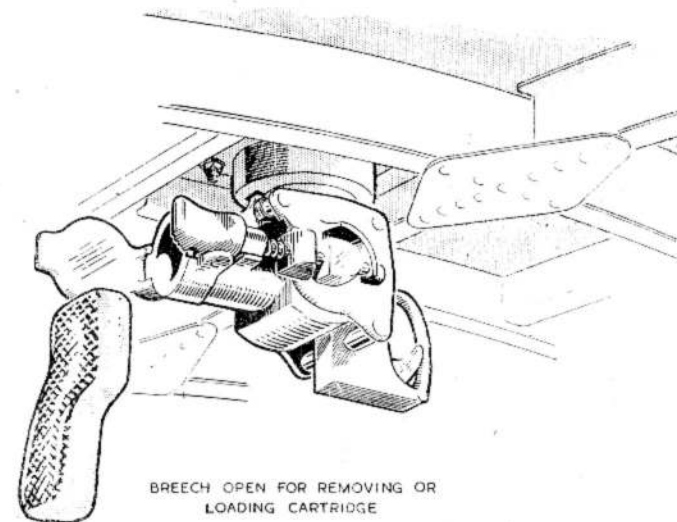
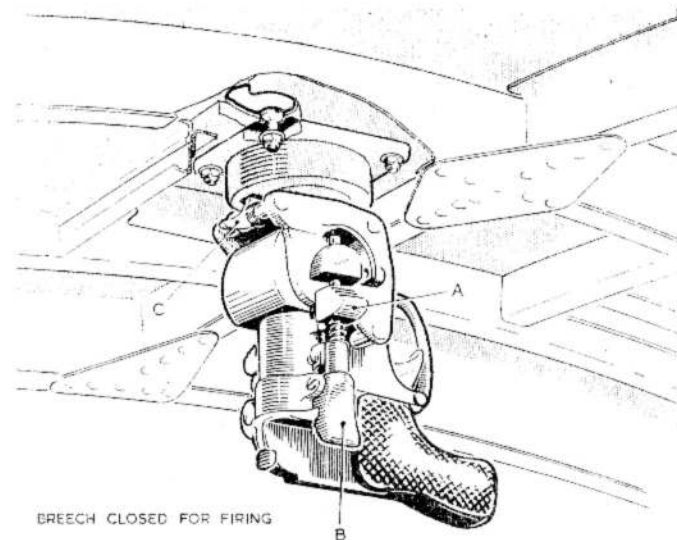


Fig. 1. Signal pistol

RESTRICTED

Window cartridge stowage

7. A stowage for six window cartridges is mounted on the port side of the fuselage above the signal cartridge stowage.

Engine starter cartridge stowage

8. A stowage for six engine starter cartridges is mounted on the starboard side of the rear fuselage immediately aft of the transport joint, access to the stowage is provided by

the rear camera-bay hatch (*Sect. 2, Chap. 4, fig. 4, item 35*).

Aircraft destructor stowage

9. A stowage for an aircraft destructor is mounted on the inside of the starboard equipment bay door (*Sect. 2, Chap. 4, fig. 4, item 16*).

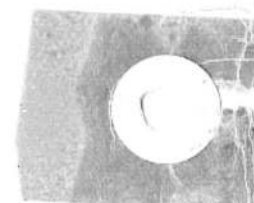
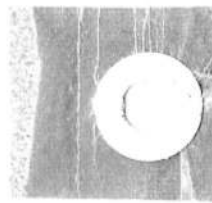
Canopy and escape hatch explosive bolts

10. The canopy is attached to the fuselage

coaming tube by 32 bolts, and the escape hatch by 34 bolts, each of which houses a detonator. The bolts, together with the detonators, are fully described in A.P.1661F, Vol. 1.

Snatch unit explosive collar

11. The explosive collar, attached to the elevator control tube and used in conjunction with the snatch unit (*Sect. 3, Chap. 11*), is fully described in A.P.1661F, Vol. 1.



This file was downloaded
from the RTFM Library.

Link: www.scottbouch.com/rtfm

Please see site for usage terms,
and more aircraft documents.

