

**MAIN PLANES  
AILERON, PORT**

Ref. No	Part No.	Description	No. off	Matl. Spec.	Cl. of Equip.		Plate No.
					M.R.	L.M.	
12105	—	<b>AILERON, PORT, ASSEMBLY</b> (E.A1.24.1/1, fitted with internal stiffeners and with Mod. 895) Spares for:—	—	—	A		
	E.A1.24.5	<b>AILERON, REAR PORTION, PORT, GROUP</b> ... Spares for:—	1	—	MR		
447	E.A1.24.259	Clip, tab, push rod fairing, 30 SWG ...	1	Spring Steel	C		MP.1
448	E.A1.24.199	Housing, bearing tab hinge ...	1	L.1	C		MP.1
449	E.A1.24.247	Housing, bearing tab hinge, outboard ...	1	L.40	C		MP.1
450	E.A1.24.261	Housing, c/w Skefko bearing tab hinge, centre ...	1	—	B		MP.1
	HOFFMANN						
2A/9500444	UL.S.7	Bearing, self-aligning, $\frac{3}{8}$ " i/d aileron main hinge, inboard	1	—	B		
	HOFFMANN						
2A/9500419	T.17	Bearing, $1\frac{1}{8}$ " i/d tab torque tube lever ...	1	—	B		MP.2
	SKEFKO						
452	402259B	Bearing, self-aligning, $\frac{3}{16}$ " i/d aileron tab hinge ...	2	—	B		
	SKEFKO						
453*	402261B	Bearing, self-aligning, $\frac{1}{16}$ " i/d, aileron main ...	1	—	B		
	or						
2A/9500467							
	SKEFKO						
454	402347	Bearing, $\frac{1}{16}$ " i/d tab torque tube and blow-back rod ...	1	—	B		
20649	E.A3.24.191	Bolt, special, tab gear access door (Mod. 1294) ...	6	S.95	C		MP.1
455	E.A1.24.225	Bolt, special, mounting support bracket tab operating gear	3	S.11	C		MP.1
456	E.A1.24.231	Bolt, special, aileron inboard hinge ...	1	S.11	C		MP.1
457	E.A1.24.263	Bolt, special, tab control attachment ...	1	S.11	C		MP.2
458	E.A1.24.265	Bolt, special, tab control attachment ...	1	S.11	C		MP.1
459	E.A1.24.267	Bolt, special, tab control attachment ...	1	S.65	C		MP.2
2030	E.A1.24.725	Bolt, special, securing aileron leading edge sealing strip	30	S.1	C		
460	E.A1.24.195	Bracket, support, on rib 4 for tab operating gear ...	1	L.40	C		MP.1
461	E.A1.24.301	Bush, aileron control stop ...	1	DTD.265	C		MP.1
28N/12447	AGS.2030/21	Cirdip, "Seegar" internal, $\frac{7}{8}$ " i/d ...	1	—	C		
28N/12455	AGS.2031/22	Cirdip, "Seegar" external, $1\frac{1}{8}$ " i/d ...	1	—	C		MP.2
28N/12458	AGS.2031/29	Cirdip, "Seegar" external, $1\frac{1}{8}$ " i/d ...	1	—	C		
28N/12457	AGS.2031/31	Cirdip, "Seegar" external, $1\frac{1}{8}$ " i/d ...	1	—	C		
28N/12446	AGS.2030/15	Cirdip, "Seegar" internal, 20 m/m i/d ...	2	—	C		MP.1
3020	E.A1.24.405	Cover, inspection, 20 SWG ...	1	L.72	C		MP.1
3021	E.A1.24.269	Fairing, aileron tab push rod, 18 SWG ...	1	L.59	C		MP.1
470	E.A1.24.243	Lever, operating, tab torque tube ...	1	L.40	C		MP.2
2031	E.A1.24.883	Piece, packing ...	24	L.40	C		
471	E.A1.24.375	<b>ROD, TAB CONTROL OPERATING GEAR, GROUP (PRE-MOD. 1707)</b> Spares for:—	1	—	A/MR		MP.1
473	E.A1.24.331	Bolt, special, clamping, blow back rod to torsion tube	4	S.11	C		MP.1

**MAIN PLANES  
AILERON, PORT**

Ref. No.	Part No.	1	2	3	4	5	6	Description	No. off	Matl. Spec.	Cl. of Equip.		Plate No.
											M.R.	L.M.	
1977	E.A1.24.353	<b>LEVER, CONTROL ARM, TAB OPERATING, GROUP</b>						1	—	B	MP.1		
		Consisting of:—											
474	E.A1.24.359	Bolt, special spool attachment ... ..						4	S.11	C			
3637	E.A1.24.953	<b>LEVER, C/W BALLRACE, GROUP</b>						1	—	B	MP.1		
		Consisting of:—											
2A/9500463	SKEFKO CBA.2	Bearing ... ..						1	—	B	MP.1		
75	EEAS.3/D	Housing, ballrace ... ..						1	—	C	MP.1		
	E.A1.24.913	Lever, arm ... ..						1	—	—	MP.1		
92	EEAS.4/20C	Washer, packing ... ..						2	—	C	MP.1		
28M/10328	AGS.2002/C/1	Nut, stiff, 2 BA ... ..						4	—	C			
	E.A1.24.913	Spool ... ..						1	—	—			
	E.A1.24.221	Rod, blow-back ... ..						1	S.11	—			
	E.A1.24.373	Tube, torsion, complete ... ..						1	—	MR			
21477	E.A3.24.207	<b>ROD, TAB CONTROL OPERATING GEAR, GROUP (MOD. 1707)</b>						1	—	A/MR			
		Spares for this group are identical with those for group Ref. No. 471 on page 451 except for the following deletion and addition											
		Delete:—											
	E.A1.24.373	Tube, torsion, complete ... ..						1	—	MR			
		Add:—											
	E.A3.24.205	Tube, torsion, complete ... ..						1	—	MR			
2625	E.A1.24.917	<b>ROD, PUSH, TAB, GROUP</b>						1	—	B	MP.2		
		Spares for:—											
28R/13509	HOFFMANN CM.2/B or 548 CM.2/A	Bearing, ball rod end ... ..						1	—	B			
2627	E.A1.24.899	Nut, special lock ... ..						1	S.95	C	MP.2		
2626	E.A1.24.919	Socket, tab push rod, c/w Skefko bearing No. 402259B, Ref. No. 452						1	DTD.683	B	MP.2		
478	E.A1.24.271	Stop, rubber aileron control ... ..						2	Shore No. 55	C	MP.1		
3032	E.A1.24.923	<b>TAB, AILERON HINGE, GROUP</b>						1	—	A			
		Spares for:—											
481	E.A1.24.251	Lug, half hinge, tab, centre ... ..						1	DTD.683	C	MP.1		
482	E.A1.24.252	Lug, half hinge, tab, centre ... ..						1	DTD.683	C	MP.1		
4153	E.A1.24.227	Socket, tab hinge ... ..						2	L.40	C	MP.1		
483	E.A1.24.229	Spindle, tab hinge ... ..						1	S.11	C	MP.1		
484	E.A1.24.245	Washer, special saddle, torque lever ... ..						2	L.40	C	MP.2		

**MAIN PLANES  
AILERON, PORT**

Ref. No.	Part No.	Description	No. off	Mati. Spec.	Cl. of Equip.	Plate No.
					M.R. L.M.	
		1 2 3 4 5 6				
6374	E.A3.24.1	<b>AILERON, PORT, ASSEMBLY (MOD. 875 AND 895)</b> (Supplied to Drg. E.A3.00.281) (Supplied c/w centre hinge shim E.A1.24.901, Ref. 26FZ/5001, as a loose item) Spares for:—	1	—	A	
	E.A3.24.5	<b>AILERON, REAR PORTION, PORT, GROUP ...</b> Spares for:—	1	—	MR	
447	E.A1.24.259	Clip, tab push rod fairing, 30 SWG ...	1	Spring Steel	C	MP.1
448	E.A1.24.199	Housing, bearing, tab hinge ...	1	L.1	C	MP.1
449	E.A1.24.247	Housing, bearing, tab hinge, outboard ...	1	L.40	C	MP.1
450	E.A1.24.261	Housing, c/w Skefko bearing, tab hinge, centre ...	1	—	B	MP.1
	E.A3.24.177	<b>ATTACHMENT OF BEARING AT OUTBOARD HINGE RIB 20</b> Consisting of:—	—	—	—	
	SKEFKO					
2A/9500467	CBA.3	Bearing, ballrace ...	1	—	B	MP.1
28N/12353	AGS.2030/45	Circlip, "Seegar", 1 1/8" i/d ...	1	—	C	MP.1
	E.A3.24.183	<b>ATTACHMENT OF TOP AND BOTTOM NOSE SKIN TO AILERON SPAR</b> Spares for:—	—	—	—	
20649	E.A3.24.191	Bolt, special, tab gear access door (Mod. 1294) ...	6	S.95	C	
3020	E.A1.24.405	Cover, inspection, 20 SWG ...	1	L.72	C	MP.1
478	E.A1.24.271	Stop, rubber, aileron control ...	2	Shore No. 55	C	MP.1
3021	E.A1.24.269	Fairing, aileron tab push rod, 18 SWG ...	1	L.72	C	MP.1
	E.A3.24.173	<b>ROD, TAB CONTROL, OPERATING GEAR, ASSEMBLY</b> Spares for:—	—	—	—	
455	E.A1.24.225	Bolt, special, mounting, support bracket tab operating gear	3	S.11	C	MP.1
457	E.A1.24.263	Bolt, special, tab control attachment ...	1	S.65	C	MP.2
459	E.A1.24.267	Bolt, special, tab control attachment ...	1	S.65	C	MP.2
460	E.A1.24.195	Bracket, support, on rib 4 for tab operating gear ...	1	L.40	C	MP.1
461	E.A1.24.301	Bush, aileron control stop ...	1	DTD.625	C	MP.1
	HOFFMANN					
2A/9500419	T.17	Bearing, 1 1/8" i/d, tab torque tube lever ...	1	—	B	MP.2
	HOFFMANN					
2A/9500444	BAL. 3/8"	Bearing, ballrace ...	1	—	B	MP.2
	SKEFKO					
2A/9500412	CBS.3	Bearing, ballrace ...	1	—	B	MP.1
28N/2001688	AGS.2030/22	Circlip, "Seegar" internal, 7/8" i/d ...	1	—	C	MP.1
28N/2001716	AGS.2030/26	Circlip, "Seegar", internal, 1 1/8" i/d ...	1	—	C	MP.2
28N/12455	AGS.2031/22	Circlip, "Seegar", external, 1 1/8" i/d ...	1	—	C	
470	E.A1.24.243	Lever, operating, tab torque tube ...	1	L.40	C	MP.2
471	E.A1.24.375	<b>ROD, TAB, CONTROL OPERATING GEAR, GROUP (MOD. 1707)</b> Spares for:—	1	—	A/MR	MP.1
473	E.A1.24.331	Bolt, special, clamping, blow-back rod to torsion tube	4	S.11	C	MP.1
1977	E.A1.24.353	<b>LEVER, CONTROL, ARM, TAB OPERATING, GROUP</b> Consisting of:—	1	—	B	MP.1
474	E.A1.24.359	Bolt, special, spool attachment ...	4	S.11	C	

**MAIN PLANE  
AILERON, PORT**

Ref. No	Part No.	Description						No. off	Matl. Spec.	Cl. of Equip. M.R. L.M.	Plate No.
		1	2	3	4	5	6				
3637	E.A1.24.953	<b>LEVER, C/W BALLRACE, GROUP</b> ... ..						1	—	B	MP.1
		Consisting of:—									
2A/9500463	SKEFKO CBA.2	Bearing ... ..						1	—	B	MP.1
75	EEAS.3/D	Housing, ballrace ... ..						1	—	C	MP.1
	E.A1.24.355	Lever, arm ... ..						1	—	—	MP.1
92	EEAS.4/20C	Washer, packing ... ..						2	—	C	MP.1
28M/10328	AGS.2002/C1	Nut, stiff, 2 BA ... ..						4	—	C	
	E.A1.24.913	Spool ... ..						1	—	—	
	E.A1.24.221	Rod, blow back ... ..						1	S.11	MR	
	E.A1.24.373	Tube, torsion, complete ... ..						1	—	MR	
21477	E.A3.24.207	<b>ROD, TAB CONTROL, OPERATING GEAR, GROUP (MOD. 1707)</b> ... ..						1	—	A/MR	
		Spares for this group are identical with those for group Ref. 471 on page 453 except for the following deletion and addition									
		Delete:—									
	E.A1.24.373	Tube, torsion, complete ... ..						1	—	MR	
		Add:—									
	E.A3.24.205	Tube, torsion, complete ... ..						1	—	MR	
2625	E.A1.24.917	<b>ROD, PUSH, TAB, GROUP</b> ... ..						1	—	B	MP.2
		Spares for:—									
28R/13509	HOFFMANN CM2/B or	Bearing, ball rod end ... ..						1	—	B	
548	CM2/A										
2627	E.A1.24.899	Nut, special lock ... ..						1	S.95	C	MP.2
2626	E.A1.24.919	Socket, tab push rod, c/w Skefko bearing No. 402259B, Ref. No. 452						1	DTD.683	C	
484	E.A1.24.245	Washer, saddle, special, torque lever ... ..						2	L.40	C	MP.2
	E.A3.24.175	<b>TAB, AILERON, HINGE ASSEMBLY</b> ... ..						—	—	—	
		Consisting of:—									
456	E.A1.24.231	Bolt, special, aileron inboard hinge ... ..						1	S.11	C	MP.1
458	E.A1.24.265	Bolt, special tab control attachment ... ..						1	S.65	C	MP.1
	SKEFKO										
2A/9500462	CBA.0	Bearing, ballrace ... ..						2	—	B	MP.1
28N/1007475	AGS.2030/15	Circlip, "Seegar", internal, 20 m/m i/d ... ..						2	—	C	MP.1
28M/1006473	A27/CT	Nut, 2 BA, thin ... ..						1	—	C	MP.1
3023	E.A1.24.923	<b>TAB, AILERON HINGE, GROUP</b> ... ..						1	—	A	
		Spares for:—									
481	E.A1.24.251	Lug, half hinge, tab, centre ... ..						1	DTD.683	C	MP.1
482	E.A1.24.252	Lug, half hinge, tab, centre ... ..						1	DTD.683	C	MP.1
4153	E.A1.24.227	Spindle, tab hinge ... ..						2	L.40	C	MP.1
483	E.A1.24.229	Socket, tab hinge ... ..						1	S.11	C	MP.1
30A/9437135	†	Wire, locking, 22 SWG ... ..						QR	—	C	

**MAIN PLANES  
AILERON, STARBOARD**

Ref. No	Part No.	Description	No. off	Matl. Spec.	Cl. of Equip.	Plate No.
					M.R. L.M.	
12106	—	<b>AILERON, STARBOARD, ASSEMBLY</b> ... .. (E.A1.24.2/1 fitted with internal stiffener and with Mod. 895) Spares for:—	1	—	A	
	E.A1.24.6	<b>AILERON, REAR PORTION, GROUP</b> ... .. Spares for:—	1	—	MR	
447	E.A1.24.259	Clip, tab push rod fairing, 30 SWG ... ..	1	Spring Steel	C	MP.1
448	E.A1.24.199	Housing, bearing, tab hinge ... ..	1	L.1	C	MP.1
449	E.A1.24.247	Housing, bearing, tab hinge, outboard ... ..	1	L.40	C	MP.1
451	E.A1.24.262	Housing, c/w Skefko bearing, tab hinge, centre ... ..	1	—	B	MP.1
2A/9500444	HOFFMANN ULS.7	Bearing, self-aligning, $\frac{5}{16}$ " i/d, aileron main hinge, inboard	1	—	B	
2A/9500419	HOFFMANN T.17	Bearing, $1\frac{1}{8}$ " i/d, tab torque tube lever ... ..	1	—	B	MP.2
452	SKEFKO 402259B	Bearing, self-aligning, $\frac{3}{8}$ " i/d, aileron, tab hinge ... ..	2	—	B	
453	SKEFKO 402261B	Bearing, self-aligning, $\frac{1}{2}$ " i/d, aileron main ... ..	1	—	B	
2A/9500467	or SKEFKO					
454	402347	Bearing, $\frac{1}{2}$ " i/d, tab torque tube and blow-back rod	1	—	B	
20649	E.A3.24.191	Bolt, special, tab gear access door (Mod. 1294) ... ..	6	S.95	C	
455	E.A1.24.225	Bolt, special, mounting, support bracket, tab operating gear	3	S.11	C	MP.1
456	E.A1.24.231	Bolt, special, aileron inboard hinge ... ..	1	S.11	C	MP.1
457	E.A1.24.263	Bolt, special, tab control attachment ... ..	1	S.65	C	MP.2
458	E.A1.24.265	Bolt, special, tab control attachment ... ..	1	S.65	C	MP.1
459	E.A1.24.267	Bolt, special, tab control attachment ... ..	1	S.65	C	MP.2
2030	E.A1.24.725	Bolt, special, securing aileron leading edge sealing strips	30	S.1	C	
460	E.A1.24.195	Bracket, support, on rib 4 for tab operating gear ... ..	1	L.40	C	MP.1
461	E.A1.24.301	Bush, aileron, control stop ... ..	1	DTD.265	C	MP.1
28N/12447	AGS.2030/21	Cirdip, "Seegar", internal, $\frac{7}{8}$ " i/d ... ..	1	—	C	
28N/12455	AGS.2031/22	Cirdip, "Seegar", external, $1\frac{1}{8}$ " i/d ... ..	1	—	C	MP.2
28N/12458	AGS.2031/29	Cirdip, "Seegar", external, $1\frac{7}{8}$ " i/d ... ..	1	—	C	
28N/12457	AGS.2031/31	Cirdip, "Seegar", external, $1\frac{1}{8}$ " i/d ... ..	1	—	C	
28N/12446	AGS.2030/15	Cirdip, "Seegar", internal, 20 m/m i/d ... ..	2	—	C	MP.1
3020	E.A1.24.405	Cover, inspection, 30 SWG ... ..	1	L.72	C	MP.1
3022	E.A1.24.270	Fairing, aileron, tab push rod, 18 SWG ... ..	1	L.59	C	MP.1
470	E.A1.24.243	Lever, operating, tab torque tube ... ..	1	L.40	C	MP.2
2031	E.A1.24.883	Piece, packing ... ..	24	L.40	C	
472	E.A1.24.376	<b>ROD, TAB CONTROL, OPERATING GEAR, GROUP (PRE-MOD. 1707)</b> Spares for:—	1	—	A/MR	MP.1
473	E.A1.24.331	Bolt, special, clamping blow-back rod to torsion tube	4	S.11	C	MP.1

**MAIN PLANES  
AILERON, STARBOARD**

Ref. No.	Part No.	Description	No. off	Matl. Spec.	Cl. of Equip.	Plate No.
					M.R. L.M.	
3636	E.A1.24.354	<b>LEVER, CONTROL ARM, TAB OPERATING, GROUP</b>	1	—	B	MP.1
		Consisting of:—				
474	E.A1.24.359	Bolt, special, spool attachment ... ..	4	S.11	C	
3637	E.A1.24.953	<b>LEVER, C/W BALLRACE, GROUP</b>	1	—	B	MP.1
		Consisting of:—				
2A/9500463	SKEFKO					
	CBA.2	Bearing ... ..	1	—	B	MP.1
75	EEAS.3/D	Housing, ballrace ... ..	1	—	C	MP.1
	E.A1.24.355	Lever, arm ... ..	1	—	—	MP.1
92	EEAS.4/20C	Washer, packing ... ..	2	—	C	MP.1
28M/10328	AGS.2002/C/1	Nut, stiff, 2 BA ... ..	4	—	C	
	E.A1.24.914	Spool ... ..	1	—	—	
	E.A1.24.221	Rod, blow-back ... ..	1	S.11	—	
	E.A1.24.373	Tube, torsion, complete (Mod. 1707) ... ..	1	—	MR	
21478	E.A3.24.208	<b>ROD, TAB CONTROL, OPERATING GEAR, GROUP (MOD. 1707)</b>	1	—	A/MR	
		Spares for this group are identical with those for group Ref. No. 472 except for the following deletion and addition				
		Delete:—				
	E.A1.24.375	Tube, torsion (complete) ... ..	1	—	MR	
		Add:—				
	E.A3.24.205	Tube, torsion (complete) ... ..	1	—	MR	
2625	E.A1.24.917	<b>ROD, PUSH, TAB, GROUP</b>	1	—	B	MP.2
		Spares for:—				
28R/13509	HOFFMANN					
	CM.2/B or	Bearing, ball rod end ... ..	1	—	A	
548	CM.2/A					
2627	E.A1.24.899	Nut, special, lock ... ..	1	S.95	C	MP.2
2626	E.A1.24.919	Socket, tab push rod, c/w Skefko bearing, No. 402295B	1	DTD.683	B	MP.2
478	E.A1.24.271	Stop, rudder, aileron control ... ..	2	Shore No.55	C	MP.1
3024	E.A1.24.924	<b>TAB, AILERON HINGE, GROUP</b>	1	—	A	
		Spares for:—				
481	E.A1.24.251	Lug, half hinge, tab, centre ... ..	1	DTD.683	C	MP.1
482	E.A1.24.252	Lug, half hinge, tab, centre ... ..	1	DTD.683	C	MP.1
4153	E.A1.24.227	Socket, tab hinge ... ..	2	L.40	C	MP.1
483	E.A1.24.229	Spindle, tab hinge ... ..	1	S.11	C	MP.1
484	E.A1.24.245	Washer, special saddle, tab torque lever ... ..	2	L.40	C	MP.2

**MAIN PLANES  
AILERON, STARBOARD**

Ref. No	Part No.	Description						No. off	Matl. Spec.	Cl. of Equip.			Plate No.
		1	2	3	4	5	6			M.R.	L.M.		
6375	E.A3.24.2	<b>AILERON, STARBOARD, ASSEMBLY (MOD. 875 AND 895)</b> (Supplied to Drg. E.A3.00.282) (Supplied c/w centre hinge shim E.A1.24.901, Ref. 26FZ/5001, as a loose item) Spares for:—						1	—	A			
	E.A3.24.6	<b>AILERON, REAR PORTION, STARBOARD, GROUP</b> Spares for:—						1	—	—			
447	E.A1.24.259	Clip, tab push rod fairing, 30 SWG ... ..						1	Spring Steel	C			MP.1
448	E.A1.24.199	Housing, bearing, tab hinge ... ..						1	L.1	C			MP.1
449	E.A1.24.247	Housing, bearing, tab hinge, outboard ... ..						1	L.40	C			MP.1
451	E.A1.24.262	Housing, c/w Skefko bearing, tab hinge, centre ... ..						1	—	B			
	E.A3.24.177	<b>ATTACHMENT OF BEARING AT OUTBOARD HINGE, RIB 20</b> Consisting of:—						—	—	—			
	SKEFKO												
2A/9500467	CBA.3	Bearing, ballrace ... ..						1	—	B			MP.1
28N/12353	AGS.2030/45	Circlip, "Seegar", 1 7/8" i/d ... ..						1	—	C			MP.1
	E.A3.24.184	<b>ATTACHMENT OF TOP AND BOTTOM NOSE SKIN TO AILERON SPAR</b> Spares for:—						—	—	—			
20649	E.A3.24.191	Bolt, special, tab gear access door (Mod. 1294) ... ..						6	S.95	C			
3020	E.A1.24.405	Cover, inspection, 20 SWG ... ..						1	L.72	C			MP.1
478	E.A1.24.271	Stop, rubber, aileron control ... ..						2	Shore No. 55	C			MP.1
3022	E.A1.24.270	Fairing, aileron push rod, 18 SWG ... ..						1	DTD.213	C			MP.1
	E.A3.24.174	<b>ROD, TAB CONTROL, OPERATING GEAR, ASSEMBLY</b> Spares for:—						—	—	—			
455	E.A1.24.225	Bolt, special, mounting, support bracket, tab operating gear						3	S.11	C			MP.1
457	E.A1.24.263	Bolt, special, tab control attachment ... ..						1	S.11	C			MP.2
459	E.A1.24.267	Bolt, special, tab control attachment ... ..						1	S.11	C			MP.2
460	E.A1.24.195	Bracket, support, on rib 4 to tab operating gear						1	L.40	C			MP.1
461	E.A1.24.301	Bush, aileron control stop ... ..						1	DTD.265	C			MP.1
	HOFFMANN												
2A/9500419	T.17	Bearing, 1 1/2" i/d, tab torque tube lever ... ..						1	—	B			MP.2
	HOFFMANN												
2A/9500444	BAL 5/8"	Bearing, ballrace ... ..						1	—	B			MP.2
	SKEFKO												
2A/9500412	CBS.3	Bearing, ballrace ... ..						1	—	B			MP.1
28N/2001688	AGS.2030/22	Circlip, "Seegar", internal, 7/8" i/d ... ..						1	—	C			MP.1
28N/2001716	AGS.2030/26	Circlip, "Seegar", internal, 1 1/8" i/d ... ..						1	—	C			MP.2
28N/12455	AGS.2031/22	Circlip, "Seegar", external, 1 1/8" i/d ... ..						1	—	C			MP.2
470	E.A1.24.243	Lever, operating, tab torque tube ... ..						1	L.40	C			MP.2

**MAIN PLANE  
AILERON, STARBOARD**

Ref. No	Part No.	Description	No. off	Matl. Spec.	Cl. of Equip.		Plate No.
					M.R.	L.M.	
		1 2 3 4 5 6					
472	E.A1.24.376	<b>ROD, TAB CONTROL, OPERATING GEAR, GROUP (PRE-MOD. 1707)</b>	1	—	A/MR		MP.1
		Spares for:—					
473	E.A1.24.331	Bolt, special, clamping, blow-back rod to torsion tube	4	S.11	C		MP.1
3636	E.A1.24.354	<b>LEVER, CONTROL ARM, TAB OPERATING, GROUP</b>	1	—	B		MP.1
		Consisting of:					
474	E.A1.24.359	Bolt, special, spool attachment ...	4	S.11	C		
3637	E.A1.24.953	<b>LEVER, C/W BALLRACE, GROUP</b>	1	—	B		MP.1
		Consisting of:—					
2A/9500463	SKEFKO CBA.2	Bearing ...	1	—	B		MP.1
75	EEAS.3/D	Housing, ballrace ...	1	—	C		MP.1
	E.A1.24.355	Lever, arm ...	1	—	—		MP.1
92	EEAS.4/20C	Washer, packing ...	2	—	C		MP.1
28M/10328	AGS.2002/C/1	Nut, stiff, 2 BA ...	4	—	C		
	E.A1.24.914	Spool ...	1	—	—		
	E.A1.24.221	Rod, blow-back ...	1	S.11	—		
	E.A1.24.373	Tube, torsion, complete (Mod. 1707) ...	1	—	MR		
21478	E.A3.24.208	<b>ROD, TAB CONTROL, OPERATING GEAR, GROUP (MOD. 1707)</b>	1	—	A/MR		
		Spares for this group are identical with those for group Ref. 472 except, for the following deletion and addition					
		Delete:—					
	E.A1.24.373	Tube, torsion (complete) ...	1	—	MR		
		Add:—					
	E.A3.24.205	Tube, torsion (complete) ...	1	—	MR		
2625	E.A1.24.917	<b>ROD, PUSH TAB, GROUP</b>	1	—	B		MP.2
		Spares for:—					
28R/13509	HOFFMANN CM.2/B or CM.2/A	Bearing, ball rod end ...	1	—	B		
548							
2627	E.A1.24.899	Nut, special lock ...	1	S.95	C		MP.2
2626	E.A1.24.919	Socket, tab push rod, c/w Skefko bearing No. 402259B, Ref. 452	1	DTD.683	B		MP.2
484	E.A1.24.245	Washer, saddle, special, tab torque lever ...	2	L.40	C		MP.2
	E.A3.24.176	<b>TAB, AILERON, HINGE, ASSEMBLY</b>	—	—	—		
		Consisting of:—					
456	E.A1.24.231	Bolt, special, aileron inboard hinge ...	1	S.11	C		MP.1
458	E.A1.24.265	Bolt, special, tab control attachment ...	1	S.65	C		MP.1
	SKEFKO						
2A/9500462	CBA/0	Bearing, ballrace ...	2	—	B		MP.1
28N/1007475	AGS.2030/15	Circlip, "Seegar", external, 20 m/m i/d ...	2	—	C		MP.1
3024	E.A1.24.924	<b>TAB, AILERON HINGE, GROUP</b>	1	—	A		
		Spares for:—					
481	E.A1.24.251	Lug, half, hinge, tab, centre ...	1	DTD.683	C		MP.1
482	E.A1.24.252	Lug, half, hinge, tab, centre ...	1	DTD.683	C		MP.1
4153	E.A1.24.227	Socket, tab, hinge ...	2	L.40	C		MP.1
483	E.A1.24.229	Spindle, tab, hinge ...	1	S.11	C		MP.1
30A/9437135	†	Wire, locking, 22 SWG ...	QR	—	C		

**Pages 459 to 464 not issued**



**MAIN PLANES  
AILERON, PORT AND STARBOARD**

Re. No.	Part No.	Description	No. off	Matl. Spec.	Cl. of St.	Plate and Illust'n No.
					M.R.	
<b>SUMMARY OF STOCK ITEMS USED ON AILERONS, PORT AND STARBOARD, ASSEMBLY</b>						
28D/12512	A.25/1C	Bolt, 2 BA, hex. head, .75 long	...	...		C
28D/12513	A.25/2C	Bolt, 2 BA, hex. head, .65 long	...	...		C
28D/12531	A.25/3C	Bolt, 2 BA, hex. head, .75 long	...	...		C
28D/12515	A.25/10C	Bolt, 2 BA, hex. head, 1."45 long	...	...		C
28D/12542	A.25/5E	Bolt, 1/2" BSF, hex. head, 1" long	...	...		C
28D/13046	A.25/19E	Bolt, 1/2" BSF, hex. head, 2."4 long	...	...		C
28D/8300	AS.1242/1B	Bolt, 4 BA, c'sk head, .75 long	...	...		C
28D/8306	AS.1242/1C	Bolt, 2 BA, c'sk head, .75 long ...	...	...		C
28D/8308	AS.1242/3C	Bolt, 2 BA, c'sk head, .77 long...	...	...		C
28D/8342	AS.1248/2C	Bolt, 2 BA, mushroom head, .76 long ...	...	...		C
28M/12929	A.27/CP	Nut, 2 BA, plain	...	...		C
28M/13121	A.27/CS	Nut, 2 BA, slotted	...	...		C
28L/13124	A.27/CT	Nut, 2 BA, thin	...	...		C
28L/13326	A.27/GT	Nut, 5/16" BSF, thin	...	...		C
28M/10287	AGS.2001/B/1	Nut, stiff, 4 BA	...	...		C
28M/8931	BD.1	Nut, 4 BA, "Aerotight"	...	...		C
28M/10288	AGS.2001/C/1	Nut, stiff, 2 BA ...	...	...		C
28M/10328	AGS.2002/C/1	Nut, stiff, 2 BA ...	...	...		C
28M/8932	CD.1	Nut, 2 BA, "Aerotight"	...	...		C
28M/8925	CD.3	Nut, 2 BA, "Aerotight"	...	...		C
28M/9999	AGS.2012/C/11	Nut, stiff, 2 BA ...	...	...		C
28M/10290	AGS.2001/E/1	Nut, stiff, 1/4" BSF	...	...		C
28M/8933	ED.1	Nut, 1/4" BSF, "Aerotight"	...	...		C
28P/1207	AGS.166/3	Pin, split, 1/16" dia. x 1" long	...	...		C
28S	A.32/B.8	Screw, 4 BA, round head, 1/4" long	...	...		C

**MAIN PLANES  
AILERON, PORT AND STARBOARD**

Ref. No.	Part No.	Description					No. off	Matl. Spec.	Cl. of St.	Plate and Illust'n No.
		1	2	3	4	5			M.R.	
28S/	A.32/A6	Screw, 6 BA, round head, $\frac{3}{16}$ " long ... ..							C	
28W/	SP.13/D	Washer, $\frac{1}{4}$ " BSF, plain ... ..							C	
28W/	SP.15/C	Washer, 2 BA, plain ... ..							C	
28W/	SP.15/E	Washer, $\frac{1}{4}$ " BSF, plain ... ..							C	
28W/	SP.16/C	Washer, 2 BA, plain ... ..							C	

**MAIN PLANE  
FLAPS, PORT**

Ref. No	Part No.	Description	No. off	Matl. Spec.	Cl. of Equip.	Plate No.
					M.R. L.M.	
		1 2 3 4 5 6				
2975	E.A1.25.1	<b>FLAP, OUTER WING, PORT ASSEMBLY</b> ... (Leading edge to be chamfered on assembly) Spares for:—	1	—	A	MP.3
431	E.A1.25.63	<b>Bolt, special, flap operating control attachment</b> ...	2	S.11	C	MP.3
5185	E.A1.25.265	<b>Bolt, special, hinge attachment to wing</b> ...	2	S.15	C	MP.3
433	E.A1.25.43	<b>Washer, special, spherical</b> ...	2	S.11	C	MP.3
434	E.A1.25.67	<b>Washer, bevel flap control bolt</b> ...	4	L.1 or L.40	C	MP.3

**MAIN PLANE  
FLAPS, PORT**

Ref. No.	Part No.	1 2 3 4 5 6	Description	No. off	Matl. Spec.	Cl. of Equip.	Plate No.
						M.R. L.M.	
2977	E.A1.25.3		<p><b>FLAP, INNER WING, PORT, ASSEMBLY ... ..</b>                      (leading edge to be chamfered on                      assembly)                      Spares for this assembly are identical                      with those for assembly Ref. No. 2975                      on page 467</p>	1	—	A	MP.3

**MAIN PLANE  
FLAPS, PORT**

Ref. No.	Part No.	Description					No. off	Matl. Spec.	Cl. of St.	Plate and Illust'n No.
		1	2	3	4	5			M.R.	
<b>SUMMARY OF STOCK ITEMS USED WINGS FLAPS, PORT</b>										
28D/12531	A.25/3C	<b>Bolt</b> , 2 BA, hex. head, .75 long					...	...		C
28M/12929	A.27/CP	<b>Nut</b> , 2 BA, plain					...	...	...	C
28M/13123	A.27/JS	<b>Nut</b> , $\frac{3}{8}$ " BSF, slotted					...	...	...	C
28P/1207	AGS.166/3	<b>Pin</b> , split, $\frac{1}{16}$ " dia. x 1" long					...	...	...	C
28W/3074	AGS.160/F	<b>Washer</b> , $\frac{3}{8}$ " BSF, spring					...	...	...	C
28W/8084	AS.471/C	<b>Washer</b> , 2 BA, plain					...	...	...	C



**MAIN PLANE  
FLAPS, STARBOARD**

Ref. No	Part No.	Description	No. off	Matl. Spec	Cl. of Equip.	Plate No.
					M.R. L.M.	
2976	E.A1.25.2	<p>1 2 3 4 5 6</p> <p><b>FLAP, OUTER WING, STARBOARD, ASSEMBLY ...</b>                      (Leading edge to be chamfered on assembly)                      Spares for this assembly are identical with those for assembly Ref. No. 2975. on page 467</p>	1	—	A	MP.3

**MAIN PLANE  
FLAPS, STARBOARD**

Ref. No.	Part No.	1	2	3	4	5	6	Description	No. off	Matl. Spec.	Cl. of Equip.	Plate No.
											M.R.	
2978	E.A1.25.4							<p><b>FLAP, INNER WING, STARBOARD, ASSEMBLY ...</b>                      (Leading edge to be chamfered on assembly)                      Spares for this assembly are identical with those for assembly Ref. No. 2975 on page 467</p>	1	—	A	MP.3

**MAIN PLANE  
FLAPS, STARBOARD**

Re. No.	Part No.	Description					No. off	Matl. Spec.	Cl. of St.	Plate and Illust'n No.
		1	2	3	4	5			M.R.	
<b>SUMMARY OF STOCK ITEMS USED WING FLAPS, STARBOARD</b>										
<sup>12531</sup> 28D/42537	A.25/3C	Bolt, 2 BA, hex. head, <sup>1.75</sup> <del>2.25</del> long					...	...		C
28M/12929	A.27/CP	Nut, 2 BA, plain					...	...		C
28M/13123	A.27/JS	Nut, $\frac{3}{8}$ " BSF, slotted					...	...		C
28P/1207	AGS.166/3	Pin, split, $\frac{1}{16}$ " dia. x 1" long					...	...		C
28W/3074	AGS.160/F	Washer, $\frac{3}{8}$ " BSF, spring					...	...		C
28W/8084	AS.471/C	Washer, 2 BA, plain					...	...		C



**MAIN PLANE  
UNDERCARRIAGE DOOR C/W MECHANISM, PORT**

Ref. No.	Part No.	Description	No. off	Matl. Spec.	Cl. of Equip.	Plate No.
					M.R. L.M.	
3058* 25773 or 32930	E.A1.20.10733	<b>DOOR, UNDERCARRIAGE, C/W MECHANISM, PORT ASSEMBLY</b> (Supplied to Drg. E.A3.00.603 for spares purposes (Pre-Mod. 3333)) (Supplied to Drg. E.A3.00.1053 for spares purposes (Mod. 3333)) Spares for:—	1	—	A	MP.4
25163	E.A1.20.1141	<b>HINGE</b> , aft. undercarriage door (Supplied to Drg. E.A3.00.605 for spares purposes) Attaching parts for E.A1.20.1141:—	1	DTD.683	C	MP.4
	E.A3.20.2405	Bolt, special (Make from 28D/9419397) ...	5	S.95 or S.96	—	MP.4
	E.A3.20.937	Packing ...	1	L.72	—	MP.4
5007	E.A1.20.1379	Shim ...	1	—	C	MP.4
28W/9419475	SP.15/C	Washer, 2 BA ...	QR	—	C	
12237	E.A3.20.3095	<b>HINGE</b> , forward, undercarriage door (Mod. 1464) ... Attaching parts for E.A3.20.3095:—	1	DTD.683	C	MP.4
	E.A3.20.2405	Bolt, special (Make from 28D/9419397) ...	8	S.95 or S.96	—	MP.4
	E.A3.20.935	Packing ...	2	L.72	—	MP.4
5006	E.A1.20.1377	Shim ...	2	—	C	MP.4
28W/9419475	SP.15/C	Washer, 2 BA ...	QR	—	C	
4147	E.A1.20.1175	<b>HOUSING</b> , locking pin, aft ... Attaching parts for E.A1.20.1175:—	1	DTD.683	C	MP.4
28D/1200119	A25/4C	Bolt, 2 BA ...	4	—	C	
5025	E.A1.20.3141	Shim ...	1	Alum. Alloy	C	MP.4
4149	E.A1.20.1183	<b>HOUSING</b> , locking pin, forward ... Attaching parts for E.A1.20.1183:—	1	DTD.683	C	MP.4
28D/1200119	A25/4C	Bolt, 2 BA ...	4	—	C	
5026	E.A1.20.3143	Shim ...	1	Alum. Alloy	C	MP.4
364	E.A1.20.1147	<b>LEVER</b> , bellcrank (Pre-Mod. 3333) ...	1	L.72	C	
38238	E.A9.20.2773	<b>LEVER</b> , bellcrank (Mod. 3333) ... Attaching parts for E.A1.20.1147 or E.A9.20.2773:—	1	S.514	C	MP.4
28M/1011407	A27/ES	Nut, 1/2" BSF ...	1	—	C	
378	E.A1.20.2935	Pin, special ...	1	DTD.126	C	MP.4
28W/9418921	SP.13/E	Washer, 1/2" BSF ...	1	—	C	
21492	E.A3.20.1777	<b>LEVER</b> , door lock operating (Mod. 1712) ... Attaching parts for E.A3.20.1777:—	1	DTD.683	C	MP.4
28N/9153394	AGS.899/6	Collar ...	1	—	C	
28P/902	SP/4Y/F12	Pin, shackle ...	1	—	C	
368	E.A1.20.2363	<b>LEVER</b> , door lock operating ... Attaching parts for E.A1.20.2363:—	1	DTD.683	C	MP.4
1499	E.A3.20.817	Bolt, special, 5/8" BSF ...	1	S.97	C	MP.4
28N/9153394	AGS.899/6	Collar ...	1	—	C	
28P/1074	SP/4Y/F22	Pin, shackle ...	1	—	C	
2099	E.A1.20.2367	Screw, locating ...	1	S.11	C	MP.4
382	E.A1.20.2369	Washer, packing ...	1	—	C	MP.4
28W/9416645	SP.47/G	Washer, 5/8" BSF ...	1	—	C	

**MAIN PLANE  
UNDERCARRIAGE DOOR C/W MECHANISM, PORT**

Ref. No	Part No.	Description	No. off	Matl. Spec.	Cl. of Equip.	Place No
					M.R. L.M.	
12110	E.A3.20.3049	<b>LINK, DOOR CHECK, ASSEMBLY (MOD. 1434)</b> ...	1	—	B	MP.4
		Spares for:—				
20966	E.A3.20.3077	<b>BLOCK</b> , packing ...	1	DTD.683	C	MP.4
20967	E.A3.20.3079	<b>BOLT</b> , special, eccentric ...	1	S.97	C	MP.4
12238	E.A3.20.3071	<b>FINGER</b> , tappet mounting ...	1	L.40	C	MP.4
12112	E.A3.20.3047	<b>LINK</b> , check ...	1	DTD.687	C	MP.4
12235	E.A3.20.3043	<b>LINK</b> , check ...	1	DTD.683	C	MP.4
13121	E.A3.20.3073	<b>PIECE</b> , distance ...	1	DTD.683	C	MP.4
20965	E.A3.20.3075	<b>TAPPET</b> ...	1	S.1	C	MP.4
		Attaching parts for E.A3.20.3049:—				
21080	E.A3.20.3061	Bolt, special (Mod. 1434) ...	1	S.95	C	MP.4
28M/13122	A27/GS	Nut, 5/8" BSF ...	1	—	C	
28W/9419403	SP.13/G	Washer, 5/8" BSF ...	1	—	C	
28W/9419466	SP.13/J	Washer, 3/4" BSF ...	1	—	C	
28W/9419477	SP.15/J	Washer, 1/2" BSF ...	2	—	C	
21077	E.A3.20.3045	<b>LINK</b> , door check, rear (Mod. 1434) ...	1	DTD.683	B	MP.4
21078	E.A3.20.3046	<b>LINK</b> , door check, front (Mod. 1434) ...	1	DTD.683	B	MP.4
		Attaching parts for E.A3.20.3045 and E.A3.20.3046:—				
21081	E.A3.20.3063	Bolt, special (Mod. 1434) ...	2	S.95	C	MP.4
28M/13122	A27/GS	Nut, 5/8" BSF ...	2	—	C	
28W/9419403	SP.13/G	Washer, 5/8" BSF ...	2	—	C	
28W/9419466	SP.13/J	Washer, 3/4" BSF ...	2	—	C	
28W/9419477	SP.15/J	Washer, 1/2" BSF ...	2	—	C	
20969	E.A3.20.3083	<b>LINK</b> , side (Mod. 1464) ...	2	DTD.124	B	MP.4
		Attaching parts for E.A3.20.3083:—				
21079	E.A3.20.3051	Bolt, special (Mod. 1434) ...	1	S.95	C	MP.4
28M/13122	A27/GS	Nut, 5/8" BSF ...	1	—	C	
28W/9419403	SP.13/G	Washer, 5/8" BSF ...	1	—	C	
20968	E.A3.20.3081	<b>LINK</b> , slave (Mod. 1464) ...	1	DTD.124	B	MP.4
		Attaching parts for E.A3.20.3081:—				
12200	E.A3.20.3093	Bolt, special (Mod. 1464) ...	1	S.97	C	MP.4
28M/10288	AGS.2001/C/1	Nut, 2 BA ...	1	—	C	
	E.A3.20.3087	Piece, distance ...	1	—	—	MP.4
21679	EEAS.28/15FR	Washer (Mod. 1464) ...	1	L.72	C	MP.4
28W/9419402	SP.13/C	Washer ...	1	—	C	
17864	E.A1.20.2933	<b>PEDESTAL, BELLCRANK LEVER, ASSEMBLY (PRE-MOD. 3333)</b>	1	—	C	
		Spares for:—				
376	E.A1.20.2931	<b>BUSH</b> , bearing ...	1	Oilite	C	
38236	E.A9.20.2779	<b>PEDESTAL, BELLCRANK LEVER, ASSEMBLY (MOD. 3333)</b>	1	—	C	MP.4
		Spares for:—				
	E.A1.20.1155	<b>BEARING</b> , bellcrank ...	1	DTD.683	—	MP.4
33100	E.A9.20.2775	<b>BUSH</b> , bearing ...	1	Oilite	C	MP.4
		Attaching parts for E.A1.20.2933 or E.A9.20.2779:—				
28D/9133011	A25/2C	Bolt, 2 BA ...	2	—	C	

**MAIN PLANE  
UNDERCARRIAGE DOOR C/W MECHANISM, PORT**

Ref. No	Part No.	Description	No. off	Matl. Spec.	Cl. of Equip.	Plate No
					M.R. L.M.	
		1 2 3 4 5 6				
7131	E.A3.20.2269	<b>PIN</b> , locking, undercarriage door (Pre-Mod. 3333) ...	2	S.95	C	
38239	E.A9.20.2777	<b>PIN</b> , locking, undercarriage door (Mod. 3333) ...	2	S.95	C	MP.4
		Attaching parts for E.A3.20.2269 or E.A9.20.2777:—				
28N/5549	AGS.899/2	Collar ... ..	1	—	C	
363	E.A1.20.1179	Collar, locating ... ..	1	L.64	C	MP.4
28P/840	SP/4Y/B14	Pin, shackle ... ..	1	—	C	
2098	E.A1.20.1181	<b>ROD</b> , tie, aft plunger (Pre-Mod. 3333) ...	1	—	C	
13656	E.B8.20.4489	<b>ROD</b> , tie, aft plunger (Mod. 3333) ...	1	—	C	MP.4
		Attaching parts for E.A1.20.1181 or E.B8.20.4489:—				
28N/5549	AGS.899/2	Collar ... ..	1	—	C	
28P/832	SP/4Y/B6	Pin, shackle ... ..	1	—	C	
2097	E.A1.20.10849	<b>ROD, TIE, BELLCRANK TO OPERATING MECHANISM, ASSEMBLY</b>	1	—	B	MP.4
		Spares for:—				
379	E.A1.50.75	<b>BEARING</b> , spherical ... ..	1	L.40	C	MP.4
	E.A1.20.10847	<b>FORK-END</b> ... ..	1	—	—	MP.4
1773	E.A1.20.10843	<b>HOUSING</b> , bearing rod end ... ..	1	S.1	C	MP.4
		Attaching parts for E.A1.20.10849:—				
29N/5549	AGS.899/2	Collar ... ..	2	—	C	
28P/832	SP/4Y/B6	Pin, shackle ... ..	1	—	C	
28P/837	SP/4Y/B11	Pin, shackle ... ..	1	—	C	
7134	E.A1.20.1159	<b>ROD</b> , tie, forward plunger ... ..	1	DTD.126	C	MP.4
		Attaching parts for E.A1.20.1159:—				
28N/5549	AGS.899/2	Collar ... ..	1	—	C	
28P/832	SP/4Y/B6	Pin, shackle ... ..	1	—	C	
5171	E.A3.20.2271	<b>SPRING</b> , locking pin, operating ... ..	2	—	C	MP.4
383	E.A1.20.2937	<b>WASHER</b> , distance, door lock operating lever (Pre-Mod. 3333)	2	DTD.124	C	
		Attaching parts for E.A1.20.10733:—				
362	E.A1.20.1353	Bolt, special ... ..	1	S.11	C	MP.4
12199	E.A3.20.3085	Bolt, special (Mod. 1464) ... ..	1	—	C	MP.4
28M/13121	A27/CS	Nut, 2 BA ... ..	1	—	C	
3569	EEAS.63/E	Nut, 1/2" BSF ... ..	1	S.96	C	MP.4
20972	E.A3.20.3089	Piece, distance ... ..	1	—	C	MP.4
20973	E.A3.20.3091	Piece, distance ... ..	1	—	C	MP.4
28W/9419402	SP.13/C	Washer, 2 BA ... ..	1	—	C	
28W/9418921	SP.13/E	Washer, 1/2" BSF ... ..	1	—	C	

Restricted

Ref. No	Part No							No. off	Matl. Spec.	Cl. of Equip.	Place No
		1	2	3	4	5	6			M.R.	

Restricted

Pages ~~471~~ to 486 not issued  
479



**MAIN PLANE  
UNDERCARRIAGE DOOR C/W MECHANISM, STARBOARD**

Ref. No.	Part No.	Description	No. off	Matl. Spec	Cl. of Equip.	Plate No
					M.R. L.M.	
		1 2 3 4 5 6				
3059* 25774	E.A1.20.10734	<b>DOOR UNDERCARRIAGE, C/W MECHANISM, STARBOARD, ASSEMBLY</b> (Supplied to Drg. E.A3.00.604 for spares purposes (Pre-Mod. 3333)) (Supplied to Drg. E.A3.00.1054 for spares purposes (Mod. 3333)) Spares for—	1	—	A	MP.4
32931						
25163	E.A1.20.1141	<b>HINGE</b> , aft, undercarriage door (Supplied to Drg. E.A3.00.605 for spares purposes) Attaching parts for E.A1.20.1141:—	1	DTD.683	C	MP.4
	E.A3.20.2405	Bolt, special (Make from 28D/9419397)	5	S.95 or S.96	—	MP.4
	E.A3.20.937	Packing	1	L.72	—	MP.4
5007	E.A1.20.1379	Shim	1	—	C	MP.4
28W/9419475	SP.15/C	Washer, 2 BA	QR	—	C	
12239	E.A3.20.3096	<b>HINGE</b> , forward, undercarriage door (Mod. 1464) Attaching parts for E.A3.20.3096:—	1	DTD.683	C	MP.4
	E.A3.20.2405	Bolt, special (Make from 28D/9419397)	8	S.95 or S.96	—	MP.4
	E.A3.20.935	Packing	2	L.72	—	MP.4
5006	E.A1.20.1377	Shim	2	—	C	MP.4
28W/9419475	SP.15/C	Washer, 2 BA	QR	—	C	
4148	E.A1.20.1176	<b>HOUSING</b> , locking pin, aft Attaching parts for E.A1.20.1176:—	1	DTD.683	C	MP.4
28D/1200119	A25/4C	Bolt, 2 BA	4	—	C	
5025	E.A1.20.3141	Shim	1	Alum. Alloy	C	MP.4
4150	E.A1.20.1184	<b>HOUSING</b> , locking pin, forward Attaching parts for E.A1.20.1184:—	1	DTD.683	C	MP.4
28D/1200119	A25/4C	Bolt, 2 BA	4	—	C	
5026	E.A1.20.3143	Shim	1	Alum. Alloy	C	MP.4
3680	E.A1.20.1148	<b>LEVER</b> , bellcrank (Pre-Mod. 3333)	1	L.72	C	
38237	E.A9.20.2774	<b>LEVER</b> , bellcrank (Mod. 3333) Attaching parts for E.A1.20.1148 and E.A9.20.2774:—	1	S.514	C	MP.4
28M/1011407	A27/ES	Nut, 3/8" BSF	1	—	C	
378	E.A1.20.2935	Pin, special	1	DTD.126	C	MP.4
28W/9418921	SP.13/E	Washer	1	—	C	
21492	E.A3.20.1777	<b>LEVER</b> , door lock operating (Mod. 1712) Attaching parts for E.A3.20.1777:—	1	DTD.683	C	MP.4
28N/9153394	AGS.899/6	Collar	1	—	C	
28P/902	SP/4Y/F12	Pin, shackle	1	—	C	
369	E.A1.20.2364	<b>LEVER</b> , door lock operating Attaching parts for E.A1.20.2364:—	1	DTD.683	C	MP.4
1499	E.A3.20.817	Bolt, special	1	S.97	C	MP.4
28N '9153394	AGS.899/6	Collar	1	—	C	
28P/1074	SP/4Y/F22	Pin, shackle	1	—	C	
2099	E.A1.20.2367	Screw, locating	1	S.11	C	MP.4
382	E.A1.20.2369	Washer, packing	1	—	C	MP.4
28W/9416645	SP.47/G	Washer, 3/8" BSF	1	—	C	

**MAIN PLANE  
UNDERCARRIAGE DOOR C/W MECHANISM, STARBOARD**

Ref. No.	Part No.	Description	No. off	Matl. Spec.	Cl. of Equip		Plate No
					M.R.	L.M.	
12111	E.A3.20.3050	<b>LINK, DOOR, CHECK, ASSEMBLY (MOD. 1434) ...</b>	1	—	B		MP.4
		Spares for:—					
20966	E.A3.20.3077	<b>BLOCK</b> , packing ... ..	1	DTD.683	C		MP.4
20967	E.A3.20.3079	<b>BOLT</b> , special, eccentric ... ..	1	S.97	C		MP.4
12238	E.A3.20.3071	<b>FINGER</b> , tappet mounting ... ..	1	L.40	C		MP.4
12113	E.A3.20.3048	<b>LINK</b> , check ... ..	1	DTD.687	C		MP.4
12236	E.A3.20.3044	<b>LINK</b> , check ... ..	1	DTD.683	C		MP.4
13121	E.A3.20.3073	<b>PIECE</b> , distance ... ..	1	DTD.683	C		MP.4
20965	E.A3.20.3075	<b>TAPPET</b> ... ..	1	S.1	C		MP.4
		Attaching parts for E.A3.20.3050:—					
21080	E.A3.20.3061	Bolt, special (Mod. 1434) ... ..	1	S.95	C		MP.4
28M/13122	A27/GS	Nut, 1/8" BSF ... ..	1	—	C		
28W/9419403	SP.13/G	Washer, 1/8" BSF ... ..	1	—	C		
28W/9419466	SP.13/J	Washer, 1/8" BSF ... ..	1	—	C		
28W/9419477	SP.15/J	Washer, 1/8" BSF ... ..	2	—	C		
21077	E.A3.20.3045	<b>LINK</b> , door check, rear (Mod. 1434) ... ..	1	DTD.683	B		MP.4
21078	E.A3.20.3046	<b>LINK</b> , door check, front (Mod. 1434) ... ..	1	DTD.683	B		MP.4
		Attaching parts for E.A3.20.3045 and E.A3.20.3046:—					
21081	E.A3.20.3063	Bolt, special (Mod. 1434) ... ..	2	S.95	C		MP.4
28M/13122	A27/GS	Nut, 1/8" BSF ... ..	2	—	C		
28W/9419403	SP.13/G	Washer, 1/8" BSF ... ..	2	—	C		
28W/9419466	SP.13/J	Washer, 1/8" BSF ... ..	2	—	C		
28W/9419477	SP.15/J	Washer, 1/8" BSF ... ..	2	—	C		
20969	E.A3.20.3083	<b>LINK</b> , side (Mod. 1464) ... ..	2	DTD.124	B		MP.4
		Attaching parts for E.A3.20.3083:—					
21079	E.A3.20.3051	Bolt, special (Mod. 1434) ... ..	1	S.95	C		MP.4
28M/13122	A27/GS	Nut, 1/8" BSF ... ..	1	—	C		
28W/9419403	SP.13/G	Washer, 1/8" BSF ... ..	1	—	C		
20968	E.A3.20.3081	<b>LINK</b> , slave (Mod. 1464) ... ..	1	DTD.124	B		MP.4
		Attaching parts for E.A3.20.3081:—					
12200	E.A3.20.3093	Bolt, special (Mod. 1464) ... ..	1	S.97	C		MP.4
28M/10288	AGS.2001/C/1	Nut, 2 BA ... ..	1	—	C		
	E.A3.20.3087	Piece, distance ... ..	1	—	—		MP.4
21679	EEAS.28/15FR	Washer (Mod. 1464) ... ..	1	L.72	C		MP.4
28W/9419402	SP.13/C	Washer, 2 BA ... ..	1	—	C		
17864	E.A1.20.2933	<b>PEDESTAL, BELLCRANK LEVER, ASSEMBLY (PRE-MOD. 3333)</b>	1	—	C		
		Spares for:—					
376	E.A1.20.2931	<b>BUSH</b> , bearing ... ..	1	Oilite	C		
38236	E.A9.20.2779	<b>PEDESTAL, BELLCRANK LEVER, ASSEMBLY (MOD-3333)</b>	1	—	C		MP.4
		Spares for:—					
	E.A1.20.1155	<b>BEARING</b> , bellcrank ... ..	1	DTD.683	—		MP.4
33100	E.A9.20.2775	<b>BUSH</b> , bearing ... ..	1	Oilite	C		MP.4
		Attaching parts for E.A1.20.2933 or E.A9.20.2779:—					
28D/9133011	A25/2C	Bolt, 2 BA ... ..	2	—	C		

**MAIN PLANE  
UNDERCARRIAGE DOOR C/W MECHANISM, STARBOARD**

Ref. No.	Part No.	Description	No off	Matl. Spec.	Cl. of Equip.		Plate No
					M.R.	L.M.	
		1 2 3 4 5 6					
7131	E.A3.20.2269	<b>PIN</b> , locking, undercarriage door (Pre-Mod. 3333) ...	2	S.95		C	
38239	E.A9.20.2777	<b>PIN</b> , locking, undercarriage door (Mod. 3333) ...	2	S.95		C	MP.4
		Attaching parts for E.A3.20.2269 or E.A9.20.2777:—					
28N/5549	AGS.899/2	Collar ... ..	1	—		C	
363	E.A1.20.1179	Collar, locating ... ..	1	L.64		C	MP.4
28P/840	SP/4Y/B14	Pin, shackle ... ..	1	—		C	
2098	E.A1.20.1181	<b>ROD</b> , tie, aft, plunger (Pre-Mod. 3333) ...	1	—		C	
13656	E.B8.20.4489	<b>ROD</b> , tie, aft plunger (Mod. 3333) ...	1	—		C	MP.4
		Attaching parts for E.A1.20.1181 or E.B8.20.4489:—					
28N/5549	AGS.899/2	Collar ... ..	1	—		C	
28P/832	SP/4Y/B6	Pin, shackle ... ..	1	—		C	
2097	E.A1.20.10849	<b>ROD, TIE, BELLCRANK TO OPERATING MECHANISM, ASSEMBLY</b>	1	—		B	MP.4
		Spares for:—					
379	E.A1.50.75	<b>BEARING</b> , spherical ... ..	1	L.40		C	MP.4
	E.A1.20.10847	<b>FORK-END</b> ... ..	1	—		—	MP.4
1773	E.A1.20.10843	<b>HOUSING</b> , bearing rod end ... ..	1	S.1		C	MP.4
		Attaching parts for E.A1.20.10849:—					
29N/5549	AGS.899/2	Collar ... ..	2	—		C	
28P/832	SP/4Y/B6	Pin, shackle ... ..	1	—		C	
28P/837	SP/4Y/B11	Pin, shackle ... ..	1	—		C	
7134	E.A1.20.1159	<b>ROD</b> , tie, forward plunger ... ..	1	DTD.126		C	MP.4
		Attaching parts for E.A1.20.1159:—					
28N/5549	AGS.899/2	Collar ... ..	1	—		C	
28P/832	SP/4Y/B6	Pin, shackle ... ..	1	—		C	
5171	E.A3.20.2271	<b>SPRING</b> , locking, pin, operating ... ..	2	—		C	MP.4
383	E.A1.20.2937	<b>WASHER</b> , distance, door lock operating lever (Pre-Mod. 3333)	2	DTD.124		C	
		Attaching parts for E.A1.20.10734:—					
362	E.A1.20.1353	Bolt, special ... ..	1	—		C	MP.4
12199	E.A3.20.3085	Bolt, special (Mod. 1464) ... ..	1	—		C	MP.4
28M/13121	A27/CS	Nut, 2 BA ... ..	1	—		C	
3569	EEAS.63/E	Nut, 1/4" BSF ... ..	1	S.96		C	MP.4
20972	E.A3.20.3089	Piece, distance ... ..	1	—		C	MP.4
20973	E.A3.20.3091	Piece, distance ... ..	1	—		C	MP.4
28VV/9419402	SP.13/C	Washer, 2 BA ... ..	1	—		C	
28VV/9418921	SP.13/E	Washer, 1/4" BSF ... ..	1	—		C	

Ref. No	Part No.	1 2 3 4 5 6	Description	No. off	Matl. Spec.	Cl. of Equip. M.R. L.M.	Plate No

Pages ~~489~~ to 498 not issued  
491



**MAIN PLANE  
UNDERCARRIAGE DOORS C/W MECHANISM, PORT AND STARBOARD**

Ref. No	Part No	Description	No. off	Matl Spec.	Cl. of Equip.		Plate No.
					M.R.	L.M.	
		1 2 3 4 5 6					
<b>SUMMARY OF STOCK ITEMS USED ON UNDER-CARRIAGE DOORS C/W MECHANISM, PORT AND STARBOARD, ASSEMBLY</b>							
28D/9133011	A25/2C	Bolt, 2 BA	...	...	...	...	C
28D/1200119	A25/4C	Bolt, 2 BA	...	...	...	...	C
28N/5549	AGS.899/2	Collar	...	...	...	...	C
28N/9153394	AGS.899/6	Collar	...	...	...	...	C
28M/13121	A27/CS	Nut, 2 BA	...	...	...	...	C
28M/1011407	A27/ES	Nut, 1/4" BSF	...	...	...	...	C
28M/13122	A27/GS	Nut, 3/8" BSF	...	...	...	...	C
28M/10288	AGS.2001/C/1	Nut, stiff, 2 BA	...	...	...	...	C
28P/832	SP.4Y/B6	Pin, shackle 3/8" x 0"5	...	...	...	...	C
28P/837	SP.4Y/B11	Pin, shackle 3/8" x 0"75	...	...	...	...	C
28P/840	SP.4Y/B14	Pin, shackle 3/8" x 0"9	...	...	...	...	C
28P/902	SP.4Y/F12	Pin, shackle 3/8" x 0"8	...	...	...	...	C
28P/1074	SP.4Y/F22	Pin, shackle 3/8" x 1"6	...	...	...	...	C
28W/9419402	SP.13/C	Washer, 2 BA	...	...	...	...	C
28W/9418921	SP.13/E	Washer, 1/4" BSF	...	...	...	...	C
28W/9419403	SP.13/G	Washer, 3/8" BSF	...	...	...	...	C
28W/9419466	SP.13/J	Washer, 1/2" BSF	...	...	...	...	C
28W/9419475	SP.15/C	Washer	...	...	...	...	C
28W/9419477	SP.15/J	Washer, 1/2" BSF	...	...	...	...	C
28W/9416645	SP.47/G	Washer, 3/8" BSF, spring	...	...	...	...	C

Ref. No	Part No.							No. off	Matl. Spec	Cl. of Equip	Plate No
		1	2	3	4	5	6			M.R.	

**MAIN PLANE  
PORT**

Ref. No	Part No.	Description 1 2 3 4 5 6	No. off	Matl. Spec.	Cl. of Equip.	Plate No.
					M.R. L.M.	
6801	E.A2.00.11	<b>WING, PORT, ASSEMBLY, C/W WING TIP (LESS AILERONS, FLAPS, AND UNDERCARRIAGE)</b> (Supplied to Part No. E.A2.00.157) Spares for:—	1	—	A/MR	
6932	E.A3.40.179	Adaptor, lubricating nipple for side stay pivot bolt (Mod. 1160)	1	—	C	
12105	E.A1.24.1/1	Aileron, port (fitted with internal stiffeners and with Mod. 895) (see Page 451)	1	—	A	
6374	E.A3.24.1	Aileron, port (Mod. 875 and 895) (see Page 453)	1	—	A	
6931	E.A3.40.177	Bolt, special, side stay pivot	1	S.65 or S.81	C	
397	E.A1.40.243	Bolt, special, hinge, side stay link	1	S.65 or S.81	C	
398	E.A1.20.1107	Bolt, special, main undercarriage	1	S.65	C	
5541	E.A3.20.2479	Bolt, special, aileron hinge bracket (Mod. 1021)	4	S.95	C	
	E.B7.61.1	<b>BOX, GEAR, ASSEMBLY (MOD. 714)</b>	—	—	—	
		Spares for:—				
399	E.A1.50.595	Adaptor, hydraulic pump drain pipe	1	DTD.126	C	S.6
16482	E.B7.61.39	Block, generator steady	1	—	C	
16484	E.B7.61.41	Block, generator steady	1	—	C	
		<b>BUCK AND HICKMAN</b>				
5664	E.B7.61.43	Chain, "pip" pin safety, single link, 3" long	2	—	—	
5665	E.B7.61.45	Clamp, half, generator steady	1	—	C	S.6
5665	E.B7.61.43	Clamp, half, generator steady	1	—	C	S.6
5666	E.B7.61.37	Connection, elbow, stage 12 engine tapping	1	S.92	C	S.6
5668	E.B7.61.21	Cover, inlet, half, for 2 speed generator drive	1	—	C	S.6
5670	E.B7.61.23	Cover, half, for 2 speed generator drive	1	—	C	S.6
37L/15000	E.B7.61.59	Drive, 2 speed generator	1	—	C	S.6
6876	E.B7.61.25	Duct, outlet, air, 2 speed drive and generator cooling	1	—	C	S.6
12881	E.B7.61.107	Duct, air, leading edge entry (Mod. 1439)	1	—	C	S.6
5673	E.B7.61.87	Hose, air outlet pipe connecting, 2" 5 i/d x 5" 8 long	1	Bells Asbestos	C	
		<b>AVIATION DEVELS. A.405</b>				
28FP/2	E.A1.61.8	Pin, "pip" type "A" generator steady fixing	2	—	C	S.6
408	E.A1.61.8	Pipe, drain, gear box	1	—	C	S.6
409	E.A1.61.41	Pipe, drain, hydraulic pump	1	L.56	C	S.6
5675	E.B7.61.81	Pipe, assembly, from inboard engine rib connection to 2 speed generator drive cover connection	1	L.56	C	S.6
5677	E.B7.61.27	<b>PLUG, GENERATOR DRIVE COVER DIPSTICK, GROUP</b>	1	—	C	
		Spares for:—				
5678	E.B7.61.33	Seal	1	Hycar	C	
1593	EEAS.66/1	Ring, clamping	2	—	C	
1443	EEAS.66/7	Ring, clamping	1	—	C	
6812	EEAS.66/14	Ring, clamping	2	—	C	
27H/4099	TERRY 169- $\frac{3}{4}$	Ring, split	2	—	C	
5680	E.B7.61.55	Ring, inlet, air generator cooling	1	—	C	
5681	E.B7.61.57	Ring, half, inlet, air duct generator cooling	1	L.72	C	
1025	EEAS.1/1C	Screw, 2 BA, c'sk. head	8	HTS	C	
1468	EEAS.1/2C	Screw, 2 BA, c'sk. head	6	HTS	C	
5682	E.B7.61.35	Strap, generator, air inlet and 2 speed generator drive cover securing	4	—	C	

**MAIN PLANE  
PORT**

Ref. No.	Part No.	Description	No. off	Matl. Spec.	Cl. of Equip.		Plate No.
					M.R.	L.M.	
		1 2 3 4 5 6					
5672	E.B7.61.95	<b>TURNBUCKLE GENERATOR STEADY, ASSEMBLY</b>	2	—		C	
		Consisting of:—					
16486	E.B7.61.47	Fork-end, R.H. ...	1	—		C	
16487	E.B7.61.49	Fork-end, L.H. ...	1	—		C	
28M/12931	A27/ET	Nut, 1/4" BSF, thin ...	1	—		C	
28M/13454	A27/ETL	Nut, 1/4" BSF, thin, L.H. ...	1	—		C	
16488	E.B7.61.51	Trunnion ...	1	—		C	
4861	EEAS.31/5/R	Washer, special ...	4	—		C	
	E.A2.75.17	Cabin Pressure System (see Page 713) ...	—	—		—	
	E.A3.47.21	Controls, engine (see page 53) ...	—	—		—	
	E.A1.45.13	Controls, aileron (see Page 19) ...	—	—		—	
	E.A1.50.395	Cowling, engine (see Page 599) ...	1	—		—	
	E.A3.81.9	Electrical Equipment (see Page 275) ...	—	—		—	
	E.A1.60.3	Fire Protection System (see Page 753) ...	—	—		—	
2975	E.A1.25.1	Flap, outer wing (see Page 467) ...	1	—		A	
2977	E.A1.25.3	Flap, inner wing, (see Page 468) ...	1	—		A	
	E.A2.57.497	Fuel System (see Page 759) ...	—	—		—	
	E.A2.73.337	Hydraulic Equipment (see Page 865) ...	—	—		—	
435	E.A1.50.69	<b>LINK, COWL DOOR, GROUP</b> ...	1	—		C	
		Spares for:—					
379	E.A1.50.75	Bearing, spherical ...	4	L.40		C	
	E.A1.50.77	Fitting, plug end ...	4	L.40		—	
436	E.A1.50.71	Housing, bearing ...	4	S.1		C	
	E.A1.50.69A	Link, 1/2" o/d x 17 SWG ...	2	T.45		—	
	E.A1.20.701	Mechanism, Operating Flap (see Page 67) ...	—	—		—	
28N/9796	SP.21	Nipple, lubricating, 1/4" BSF ...	1	—		C	
437	E.A1.40.287	Nut, castle, side stay link bolt ...	2	S.11		C	
438	E.A1.20.1287	Nut, special, main undercarriage pivot bolt ...	1	S.11		C	
2670* or 3047	E.A3.20.311	Panel, access, aileron control joint, bottom skin ...	1	—		C	
2671* or 3054	E.A3.20.347	Panel, access, air brake operating jack, bottom skin ...	1	—		C	
2672* or 3053	E.A3.20.353	Panel, access, rear wing attachment pin ...	1	L.73		C	
2673* or 3051	E.A3.20.377	Panel, access, front wing attachment pin, top skin ...	1	L.73		C	
2674* or 3050	E.A3.20.685	Panel, access, aileron control, bottom skin ...	1	—		C	
2675* or 3048	E.A3.20.687	Panel, access, bottom skin ...	1	—		C	
2676* or 2997	E.A1.20.1045	Panel, access, electrical equipment, bottom skin ...	1	—		C	
2677* or 2999	E.A1.20.1099	Panel, access, aileron control rod joint, bottom skin ...	2	L.73		C	
2678* or 3018	E.A1.20.1693	Panel, access, to forward fixing bolts of connecting ring to false spar and rib ...	2	L.73		C	
2679* or 3019	E.A1.20.2289	Panel, access, aileron control intermediate joint, bottom skin ...	1	—		C	
28P/934	SP.4Y/H12	Pin, dive brake jack hinge ...	1	—		C	
28P/1099	SP.4Y/H17	Pin, air brake jack hinge ...	1	—		C	
4529	E.A3.20.1813	Pin, split, special, main undercarriage bolt ...	1	DTD.268		C	

**MAIN PLANE  
PORT**

Ref. No.	Part No.	Description	No. off	Matl. Spec	Cl. of Equip.		Plate No.
					M.R.	L.M.	
	E.A3.80.659	<b>PIPES, PITOT AND STATIC ASSEMBLY</b> ... ..	—	—	—	—	
		Spares for:—					
	E.A3.80.1799	<b>MOUNTING, V.G. RECORDER AND VALVES, ASSEMBLY</b>	—	—	—	—	
		Spares for:—					
2623	E.A3.80.1891	Adaptor ... ..	1	—	—	C	
1881	E.A3.20.933	Plate, locking, main undercarriage pivot bolt ... ..	1	—	—	C	
1026	EEAS.1/1½C	Screw, 2 BA, c'sk. head ... ..	56	HTS	—	C	
1468	EEAS.1/2C	Screw, 2 BA, c'sk. head ... ..	159	HTS	—	C	
1032	EEAS.1/2E	Screw, ½" BSF, c'sk. head ... ..	42	HTS	—	C	
1033	EEAS.1/2½E	Screw, ½" BSF, c'sk. head ... ..	60	HTS	—	C	
1036	EEAS.1/5E	Screw, ½" BSF, c'sk. head ... ..	20	HTS	—	C	
6380	E.A3.20.1129	Stop, block, for side stay pivot bolt ... ..	1	DTD.683	—	MR	
	E.A1.50.859	<b>SUPPORT, COWL HOOP TO WING, GROUP</b> ... ..	—	—	—	—	
		Spares for:—					
2742	E.A1.50.363	Bolt, special attaching support hoop to engine ribs	8	HTS	—	C	
439* or 12014	E.A1.50.913	Support, hoop, engine cowl ... .. (Supplied to Part No. E.A3.00.235 for spares purposes)	1	—	—	C	
441	E.A1.50.949	Support, hoop, engine cowl ... ..	1	—	—	C	
2679	E.A1.00.67	Tip, wing (see Page 567) ... ..	1	—	—	A	
	E.A1.40.1	Undercarriage, main (see Page 971) ... ..	1	—	—	—	
443	E.A1.20.1285	Washer, special, main undercarriage pivot bolt ... ..	1	L.45	—	C	
	E.A2.20.1	Wing, structure (see Page 531) ... ..	—	—	—	—	

Ref. No.	Part No.							No. off	Matl. Spec.	Cl. of Equip.	Plate No.
		1	2	3	4	5	6			M.R. L.M.	

**Pages 505 to 514 not issued**



**MAIN PLANE  
STARBOARD**

Ref. No	Part No.	Description	No. off	Matl. Spec	Cl. of Equip.	Plate No.
					M.R. L.M.	
6802	E.A2.00.12	<b>WING, STARBOARD, ASSEMBLY, C/W WING TIP</b> (Less Ailerons, Flaps, and Undercarriage) (Supplied to Pt. No. E.A2.00.158) Spares for:—	1	—	A/MR	
6932	E.A3.40.179	<b>Adaptor</b> , lubricating nipple, for side stay pivot bolt (Mod. 1160)	1	—	C	
3069	E.A1.24.2/1	<b>Aileron</b> , starboard (see Page 455) ... .. (Fitted with internal stiffeners and with Mod. 895)	1	—	A	
6375	E.A3.24.2	<b>Aileron</b> , starboard (Mod. 875 and 895) (see Page 457)	1	—	A	
6931	E.A3.40.177	<b>Bolt</b> , special, side stay pivot ... ..	1	S.65 or S.81	C	
397	E.A1.40.243	<b>Bolt</b> , special hinge, side stay link ... ..	1	S.65 or S.81	C	
398	E.A1.20.1107	<b>Bolt</b> , special, main undercarriage ... ..	1	S.65	C	
5541	E.A3.20.2479	<b>Bolt</b> , special, aileron hinge bracket (Mod. 1021) ...	4	S.95	C	
	E.B7.61.2	<b>BOX, GEAR, ASSEMBLY (MOD.714)</b> ... .. Spares for:—	—	—	—	
399	E.A1.50.595	<b>Adaptor</b> , hydraulic pump drain pipe ... ..	1	DTD.126	C	S.6
16483	E.B7.61.40	<b>Block</b> , generator steady ... ..	1	—	C	
16485	E.B7.61.42	<b>Block</b> , generator steady ... ..	1	—	C	
	HICKMAN	<b>Chain</b> , "pip" pin safety, single link 3" long ... ..	2	—	—	
5664	E.B7.61.43	<b>Clamp</b> , half, generator steady ... ..	1	—	C	S.6
5665	E.B7.61.45	<b>Clamp</b> , half, generator steady ... ..	1	—	C	S.6
5667	E.B7.61.38	<b>Connection</b> , elbow, stage 12 engine tapping ... ..	1	S.92	C	S.6
5669	E.B7.61.22	<b>Cover</b> , inlet half, for 2 speed generator drive ... ..	1	—	C	S.6
5670	E.B7.61.23	<b>Cover</b> , half, for 2 speed generator drive ... ..	1	—	C	S.6
37L/15000	E.B7.61.59	<b>Drive</b> , 2 speed generator ... ..	1	—	C	S.6
6882	E.B7.61.26	<b>Duct</b> , outlet, air, 2 speed drive and generator cooling	1	—	C	S.6
12882	E.B7.61.108	<b>Duct</b> , air, leading edge entry (Mod. 1439) ... ..	1	—	C	S.6
5673	E.B7.61.87	<b>Hose</b> , air outlet pipe connecting, 2"5 i/d x 5"8 long	1	Bells Asbestos	C	
	AVIATION					
28FP/2	DEVELS. A.405	<b>Pin</b> , "pip" type "A", generator steady fixing ... ..	2	—	C	S.6
407	E.A1.61.7	<b>Pipe</b> , drain, gear box ... ..	1	—	C	S.6
410	E.A1.61.42	<b>Pipe</b> , drain, hydraulic pump ... ..	1	—	C	S.6
5676	E.B7.61.82	<b>Pipe</b> , assembly, from inboard engine rib connection to 2 speed generator drive cover con- nection	1	L.56	C	S.6
5677	E.B7.61.27	<b>PLUG, GENERATOR DRIVE COVER DIPSTICK, GROUP</b> Spares for:—	1	—	C	
5678	E.B7.61.33	<b>Seal</b> ... ..	1	Hycar	C	
1593	EEAS.66/1	<b>Ring</b> , clamping ... ..	2	—	C	
1443	EEAS.66/7	<b>Ring</b> , clamping ... ..	1	—	C	
6812	EEAS.66/14	<b>Ring</b> , clamping ... ..	2	—	C	
29H/4099	TERRY 169-3	<b>Ring</b> , split ... ..	2	—	C	
5680	E.B7.61.55	<b>Ring</b> , inlet, air, generator cooling ... ..	1	—	C	
5681	E.B7.61.57	<b>Ring</b> , half, inlet, air duct, generator cooling ... ..	1	L.72	C	

**MAIN PLANE  
STARBOARD**

Ref. No.	Part No.	Description	No. off	Matl. Spec.	Cl. of Equip.		Plate No.
					M.R.	L.M.	
		1 2 3 4 5 6					
1025	EEAS.1/1C	Screw, 2 BA, c'sk. head ...	8	HTS		C	
1468	EEAS.1/2C	Screw, 2 BA, c'sk. head ...	6	HTS		C	
5682	E.B7.61.35	Strap, generator, air inlet and 2 speed drive cover securing	4	—		C	
5672	E.B7.61.95	<b>TURN BUCKLE, GENERATOR STEADY, ASSEMBLY</b> Consisting of:—	2	—		C	
16486	E.B7.61.47	Fork-end, R.H. ...	1	—		C	
16487	E.B7.61.49	Fork-end, L.H. ...	1	—		C	
28M/12931	A27/ET	Nut, 1/2" BSF, thin ...	1	—		C	
28M/13454	A27/ETL	Nut, 1/2" BSF, thin, L.H. ...	1	—		C	
16488	E.B7.61.51	Trunion ...	1	—		C	
4861	EEAS.31/5/R	Washer, special ...	4	—		C	
	E.A2.75.18	Cabin Pressure System (see Page 721) ...	—	—		—	
	E.A3.47.22	Controls, Engine (see Page 55) ...	—	—		—	
	E.A1.45.14	Controls, Aileron (see Page 25) ...	—	—		—	
	E.A1.50.396	Cowling, Engine (see Page 615) ...	1	—		—	
	E.A3.81.10	Electrical Equipment (see Page 291) ...	—	—		—	
	E.A1.60.4	Fire Protection System (see Page 755) ...	—	—		—	
2976	E.A1.25.2	Flap, Outer Wing (see Page 471) ...	1	—		A	
2978	E.A1.25.4	Flap, Inner Wing (see Page 472) ...	1	—		A	
	E.A2.57.498	Fuel System (see Page 771) ...	—	—		—	
	E.A2.73.338	Hydraulic Equipment (see Page 881) ...	—	—		—	
435	E.A1.50.69	<b>LINK, COWL DOOR, GROUP</b> ...	1	—		C	
		Spares for:—					
379	E.A1.50.75	Bearing, spherical ...	4	L.40		C	
	E.A1.50.77	Fitting, plug end ...	4	L.40		—	
436	E.A1.50.71	Housing, bearing ...	4	S.1		C	
	E.A1.50.69A	Link, 1/2" o/d x 17 SWG ...	2	T.45		—	
	E.A1.20.700	Mechanism, Operating Flap (see Page 79) ...	—	—		—	
28N/9796	SP.21	Nipple, lubricating, 1/4" BSP ...	1	—		C	
437	E.A1.40.287	Nut, castle, side stay link bolt ...	2	S.11		C	
438	E.A1.20.1287	Nut, special, main undercarriage pivot bolt ...	1	S.11		C	
2670* or 3047	E.A3.20.311	Panel, access aileron control joint, bottom skin ...	1	—		C	
2671* or 3054	E.A3.20.347	Panel, access, air brake operating jack, bottom skin ...	1	—		C	
2672* or 3053	E.A3.20.353	Panel, access, rear wing attachment pin ...	1	L.73		C	
2680* or 3052	E.A3.20.378	Panel, access, front wing attachment pin, top skin ...	1	L.73		C	
2674* or 3050	E.A3.20.685	Panel, access, aileron control, bottom skin ...	1	—		C	
2681* or 3049	E.A3.20.688	Panel, access, bottom skin ...	1	—		C	
2682* or 2998	E.A1.20.1046	Panel, access, electrical equipment, bottom skin ...	1	—		C	
2677* or 2999	E.A1.20.1099	Panel, access, aileron control rod joint, bottom skin ...	2	L.73		C	
2678* or 3018	E.A1.20.1693	Panel, access, forward fixing bolts of connecting ring to false spar and rib	2	L.73		C	

**MAIN PLANE  
STARBOARD**

Ref. No	Part No.	Description	No. off	Matl. Spec.	Cl. of Equip.		Plate No.
					M.R.	L.M.	
2679* or 3019	E.A1.20.2289	Panel, access, aileron control intermediate joint, bottom skin	1	—		C	
28P/934	SP.4Y/H12	Pin, dive brake jack hinge	1	—		C	
28P/1099	SP.4Y/H17	Pin, dive brake jack hinge	1	—		C	
4529	E.A3.20.1813	Pin, split, special, main undercarriage bolt	1	DTD.268		C	
1881	E.A3.20.933	Plate, locking, main undercarriage pivot bolt	1	—		C	
1026	EEAS.1/1½C	Screw, 2 BA, c'sk. head	56	HTS		C	
1468	EEAS.1/2C	Screw, 2 BA, c'sk. head	159	HTS		C	
1032	EEAS.1/2E	Screw, ½" BSF, c'sk. head	42	HTS		C	
1033	EEAS.1/2½E	Screw, ½" BSF, c'sk. head	60	HTS		C	
1036	EEAS.1/5E	Screw, ½" BSF, c'sk. head	20	HTS		C	
6803	E.A3.20.1130	Stop, block, for side stay pivot block	1	DTD.683		C	
	E.A1.50.860	<b>SUPPORT, COWL HOOP TO WING, GROUP</b>	—	—		—	
		Spares for:—					
2742	E.A1.50.363	Bolt, special, attaching support hoop to engine ribs	8	HTS		C	
440* or 12015	E.A1.50.914	Support, hoop engine cowl (Supplied to Pt. No. E.A3.00.236 for spares purposes)	1	—		C	
442	E.A1.50.950	Support, hoop engine cowl	1	—		C	
2980	E.A1.00.68	Tip, Wing (see Page 575)	1	—		A	
	E.A1.40.2	Undercarriage, Main (see Page 987)	1	—		—	
443	E.A1.20.1285	Washer, special, main undercarriage pivot	1	L.45		C	
	E.A2.20.2	Wing Structure (see Page 547)	—	—		—	

Restricted

Ref. No.	Part No.	1 2 3 4 5 6	Description	No. off	Matl. Spec.	Cl. of Equip. M.R. L.M.	Plate No.

**Pages 519 to 528 not issued**



**MAIN PLANE  
PORT AND STARBOARD**

Ref. No.	Part No.	Description	No. off	Mtrl. Spec.	Cl. of Equip.	Plate No.
					M.R. L.M.	
<b>SUMMARY OF STOCK ITEMS USED ON WING ASSEMBLY, PORT AND STARBOARD</b>						
		1 2 3 4 5 6				
28D/12513	A25/2C	Bolt, 2 BA, hex. head, "6 long	...		C	
28D/12531	A25/3C	Bolt, 2 BA, hex. head, "75 long	...		C	
28D/12674	A25/9E	Bolt, 1" BSF, hex. head, 1"4 long	...		C	
28D/12953	A28/1B	Bolt, 4 BA, hex. head, "5 long	...		C	
28D/8306	AS.1242/1C	Bolt, 2 BA, hex. head, "7 long	...		C	
28D/8308	AS.1242/3C	Bolt, 2 BA, hex. head, "7 long	...		C	
28D/9744	AS.1248/2B	Bolt, 4 BA, mushroom head, "55 long	...		C	
28N/5555	AGS.899/8	Collar, 1/2" i/d	...		C	
28F/9735	AGS.1142/A	Nipple	...		C	
28F/11905	AGS.1170/H	Nipple	...		C	
28M/13326	A27/GT	Nut, 1/4" BSF, thin	...		C	
28M/13479	A29/BP	Nut, 4 BA, plain	...		C	
28M/10288	AGS.2001/C/1	Nut, stiff, 2 BA	...		C	
28P/1214	AGS.166/12	Pin, split, 3/8" dia. x 1 1/4" long	...		C	
28P/12351	SP.9/E8	Pin, split, 3/8" dia. x 1" long	...		C	
28P/12365	SP.9/G16	Pin, split, 1/2" dia. x 2" long	...		C	
28P/12367	SP.9/L24	Pin, split, 1/2" dia. x 3 1/2" long	...		C	
28S/9435716	A33/B12	Screw, 4 BA, c'sk. head	...		C	
28W/3101	AGS.162/F	Washer, 1/2" BSF, spring	...		C	
28V/9419474	SP.15/B	Washer, 4 BA, plain	...		C	
28V/9419475	SP.15/C	Washer, 2 BA, plain	...		C	
28V/9419477	SP.15/J	Washer, 1/2" BSF, plain	...		C	
28V/9419404	SP.16/C	Washer, 2 BA, plain	...		C	
28F/8225	AGS.1138/A	Washer, 1/2" BSF, jointing	...		C	

Restricted

Ref. No.	Part No.	1 2 3 4 5 6						No. off	Matl. Spec.	Cl. of Equip.	Plate No.
										M.R.	

**MAIN PLANE  
WING STRUCTURE, PORT**

Ref. No	Part No.	Description	No. off	Mtrl. Spec.	Cl. of Equip.	Plate No.
					M.R. L.M.	
	E.A.2.20.1	<b>WING STRUCTURE ASSEMBLY, PORT</b> ... ..	—	—	—	
		Spares for:—				
550	E.A.1.20.1329	Angle, attachment, rear cowl to fire wall ... ..	1	—	C	
4319	E.A.1.20.1223	<b>BALL JOINT, UNDERCARRIAGE SIDE STAY ATTACHMENT, GROUP</b>	1	—	B/MR	
		Consisting of:—				
583	E.A.1.20.1229	<b>BALL BEARING, SPHERICAL SEATED, GROUP</b> ...	1	—	B	
		Spares for:—				
	E.A.1.20.1231	Bush, bearing ... ..	2	DTD.412	—	
585	E.A.1.20.1233	Bolt, special, retaining ring attachment ... ..	8	S.11	C	
586	E.A.1.20.335	Bracket, attachment ... ..	1	DTD.683	C	
6334	E.A.3.00.241	Bush, bearing (E.A.1.20.1215 and E.A.1.20.1217 wired together)	1	DTD.412	C	
592	E.A.1.20.1225	Dowel, special, ball bearing locating ... ..	2	S.11	C	
593	E.A.1.20.1235	Dowel, special, retaining ring locating ... ..	1	S.11	C	
28N/9156370	SP.21	Nipple, lubricating ... ..	1	—	C	
594	E.A.1.20.1219	Ring, bottom, retaining ... ..	1	DTD.124	C	
595	E.A.1.20.1221	Ring, top, retaining ... ..	1	DTD.124	C	
552	E.A.3.20.189	Bolt, special, undercarriage attachment bracket, top	1	S.97	C	
553	E.A.1.20.601	Bolt, special, aileron control hinge on rib 4 at outer wing	1	S.11	C	
554	E.A.1.20.947	Bolt, special, undercarriage attachment bracket ...	1	S.65	C	
555	E.A.1.20.949	Bolt, special, undercarriage attachment bracket, bottom	2	S.97	C	
556	E.A.1.20.973	Bolt, special, undercarriage bracket and aft rib 6 attachment to main spar	2	S.65	C	
557	E.A.1.20.1017	Bolt, special, undercarriage attachment bracket ...	4	S.97	C	
3409	E.A.3.20.1517	Bolt, special shear, undercarriage bracket ... ..	6	S.96	C	
558	E.A.1.20.2297	Bolt, special, undercarriage bracket and aft rib 6 attachment to main spar	2	S.65	C	
13221	E.A.3.20.3407	Bolt, special, engine cowl attachment to engine ring ...	22	S.11 or S.105	C	
559	E.A.1.20.633	<b>BOSS, AND LEVERS, AILERON CONTROL HINGE ON RIB 4, OUTER WING, GROUP</b>	1	—	B	
		Spares for:—				
	E.A.1.20.595	Arm, curved lever ... ..	1	—	—	
	E.A.1.20.623	Arm, straight lever ... ..	1	—	—	
2A/9500412	SKEFKO	Ballrace ... ..	2	—	B	
561	E.A.1.20.531	Bracket, undercarriage jack attachment ... ..	1	S.65	C	
563	E.A.1.20.2983	Bracket, undercarriage attachment stub ... ..	1	DTD.683	C	
20906	E.A.3.20.3027	<b>COWLING, REMOVABLE, AT END OF JET PIPE, ASSEMBLY (MOD. 1405)</b>	1	—	B/MR	
		Spares for:—				
2956	E.A.1.20.8261	Cone, jet end ... ..	1	—	C	

**MAIN PLANE  
WING STRUCTURE, PORT**

Ref. No	Part No.	Description	No. off	Mater. Spec.	Cl. of Equip.		Plate No.
					M.R.	L.M.	
		1 2 3 4 5 6					
17746	E.A3.00.229	<b>EXTENSION WING ASSEMBLY (E.A1.20.1865)</b> ...	1	—	A/MR		
		Spares for:—					
3639	E.A1.20.2471	Plate, locking, explosive bolt holes ...	2	—	C		
3638	E.A1.20.2473	Plate, blanking, explosive bolt holes ...	2	—	C		
4307	EEAS.2/1½C	Screw, 2 BA, c'sk. head, 120° ...	12	HTS	C		
	E.A1.20.1873	<b>SKIN, TOP, ASSEMBLY</b> ...	—	—	—		
		Spares for:—					
3647	E.A3.20.1063	Panel, access, explosive bolt ...	1	—	C		
3646	E.A3.20.1065	Panel, access, explosive bolt ...	1	—	C		
	E.A3.20.3413	<b>GENERATOR, VORTEX, ASSEMBLY</b> ...	—	—	—		
		Spares for:—					
26671	E.A3.20.3411	Generator, vortex ...	2	L.72	C		
	E.A1.51.1	Mountings, Engine and Attachments (see Page 631)	—	—	—		
565	E.A1.20.1157	Mounting, jet pipe, at rear cowl ring ...	2	—	C		
3027	E.A1.20.261	Nacelle, engine, upper aft ...	1	—	A		
2983	E.A1.20.263	<b>NACELLE, ENGINE, LOWER, AFT GROUP</b> ...	1	—	A		
		Spares for:—					
17811	E.A1.20.619	<b>ARMS, CENTRE LEVER, AILERON CONTROL, GROUP</b>	1	—	B		
		Spares for:—					
568	E.A1.20.621	<b>ARM, CENTRE LEVER, GROUP</b> ...	2	—	B		
		Consisting of:—					
569	E.A1.20.469	Arm, lever ...	1	L.40	C		
2A/9500463	SKEFKO						
	CBA.2	Ballrace ...	1	—	B		
75	EEAS.3/D	Housing, ballrace ...	1	L.40	C		
92	EEAS.4/20C	Washer, packing ...	2	DTD.390	C		
6523	E.A3.45.449	Bolt, special, lever arm ...	6	S.95	C		
	E.A1.20.345	<b>MOUNTING, C/W BOSS, GROUP</b> ...	1	—	—		
		Spares for:—					
	SKEFKO						
2A/9500412	CBS.3	Ballrace ...	2	—	B		
570	E.A1.20.467	Bolt, special ...	1	L.40	C		
571	E.A1.20.579	Boss, lever ...	1	L.40	C		
572	E.A1.20.463	Tube, distance ...	1	L.40	C		
5162	E.A3.20.1809	Nut, special, ½" BSF, for undercarriage attachment bracket, inboard	2	S.80	C		
5163	E.A3.20.1811	Nut, special, ½" BSF, for undercarriage attachment bracket, outboard	2	S.80	C		
1431	E.A3.20.313	Panel, closing, bottom skin, outer wing ...	1	—	C		
1433	E.A3.20.355	Panel, closing, bottom skin, outer wing ...	1	—	C		
3055	E.A3.20.379	Panel, closing, bottom skin, outer wing ...	1	—	C		
577	E.A1.20.2233	Panel, closing, bottom skin, outer wing ...	1	—	C		
1874	E.A3.20.897	Pin, special, undercarriage attachment bracket ...	1	S.92	C		
581	E.A1.20.2987	Pin, special stub attachment ...	1	S.11	C		
	E.A1.20.203	Ring, false spar connecting ...	1	—	—		
1026	EEAS.1/1½C	Screw, 2 BA, c'sk. head ...	87	HTS	C		
1565	EEAS.1/3½C	Screw, 2 BA, c'sk. head ...	20	HTS	C		
9633	E.A3.20.1183	Shroud, aileron, inboard hinge ...	1	—	C		

**MAIN PLANE  
WING STRUCTURE, PORT**

Ref. No.	Part No.	Description 1 2 3 4 5 6	No. off	Matl. Spec.	Cl. of Equip.	Plate No.
					M.R. L.M.	
597	E.A3.20.5	Spar, main ... ..	1	—	MR	
	E.A1.20.2981	Strut, undercarriage tie, between jack attachment bracket and side stay	1	DTD.683	C	
599	E.A1.20.2989	Stud, special, for undercarriage jack attachment bracket end	1	S.11	C	
5164	E.A3.20.1057	Washer, special, undercarriage bracket ... ..	9	L.40	C	
601	E.A1.20.2295	Washer, special, for undercarriage bracket top bolt	2	S.11	C	
602	E.A1.20.2327	Washer, special, for undercarriage bracket bottom bolt	2	S.11	C	
600	E.A1.20.2991	Washer, special, for undercarriage jack attachment bracket end	1	DTD.126	C	
	E.A3.20.3	<b>WING, OUTER LEADING EDGE, ASSEMBLY</b> ... ..	—	—	—	
		Spares for:—				
	E.A3.20.7	<b>NOSE BAY NO. 5 SKINS, ASSEMBLY</b> ... ..	—	—	—	
		Spares for:—				
3649	E.A3.20.1105*	Eyebolt ... ..	42	S.96	C	
	or					
3682	E.A1.20.5321	Eyebolt ... ..	42	S.96	C	
	E.A3.20.9	<b>NOSE BAY NO. 6 SKINS, ASSEMBLY</b> ... ..	—	—	MR	
		(Supplied to Drg. E.A3.00.541 for spares purposes)				
		Spares for:—				
3649	E.A3.20.1105*	Eyebolt ... ..	34	S.96	C	
	or					
3682	E.A1.20.5321	Eyebolt ... ..	34	S.96	C	
	E.A2.20.7	<b>WING, INNER LEADING EDGE ASSEMBLY</b> ... ..	—	—	—	
		Spares for:—				
9183	E.A1.20.1349	Block, stop for undercarriage ... ..	1	L.40	C	
603	E.A1.20.1251	Bolt, special, undercarriage "up" lock hook pivot ...	1	S.65	C	
9241	E.A3.20.1153	Bracket, undercarriage "up" lock ... ..	1	DTD.683	C	
	E.A3.20.1207	<b>BRACKET, RIB 7 AND MAIN UNDERCARRIAGE, ASSEMBLY</b>	—	—	—	
		Spares for:—				
25789	E.A3.20.183	Plate, tie, upper (supplied to Drg. E.A3.00.665 for spares purposes)	1	DTD.687	C	
6368	E.A3.20.2573	<b>HOOK, UNDERCARRIAGE "UP" LOCK, GROUP (MOD. 1176)</b>	1	—	B	
		Consisting of:—				
606	E.A1.20.1243	Bush, bearing ... ..	2	DTD.412	C	
	E.A3.20.2571	Hook ... ..	1	S.65	—	
3029	E.A1.20.1117	Panel, removable, inner wing leading edge, top ...	1	—	C	
3031	E.A1.20.1119	Panel, removable, inner wing leading edge, top ...	1	—	C	
3033	E.A1.20.1343	Panel, detachable nose, inner wing leading edge (supplied to Drg. E.A3.00.237)	1	—	C	

**MAIN PLANE  
WING STRUCTURE, PORT**

Ref. No.	Part No.	Description	No. off	Matl. Spec.	Cl. of Equip.		Plate No.
					M.R.	L.M.	
	E.A1.20.1313	<b>SKIN, OUTER, BOTTOM, ASSEMBLY</b> ... ..	—	—	—		
		Spares for:—					
17865	E.A1.20.3191	Cover, oil sump ... ..	1	L.72	C		
9184	E.A1.20.1355	Shim, undercarriage stop ... ..	1	L.72	C		
18513	E.A3.20.2969	Shim, undercarriage "up" bracket ... ..	1	L.72	C		
638	E.A1.20.1247	Spring, tension, uplock hook ... ..	1	—	C		
9185	E.A1.20.3149	Stop, undercarriage "up" lock ... ..	1	—	C		
	E.A3.20.11	<b>WING, CENTRE, AFT OF SPAR, ASSEMBLY</b> ... ..	—	—	—		
		Spares for:—					
	E.A1.20.319	<b>MEMBER, TORQUE, REAR WALL ASSEMBLY</b> ... ..	—	—	—		
		Spares for:—					
7205	E.A1.20.751	<b>BRACKET, LEVER ASSEMBLY</b> ... ..	1	—	C/MR		
		Spares for:—					
2954	E.A1.20.771	Bush ... ..	1	S.15	C		
5202	E.A1.20.735	<b>LEVER, BELLCRANK, FLAP OPERATION, GROUP</b>	1	—	B		
		Consisting of:—					
5203	E.A1.25.65	Bolt, special ... ..	1	S.11	C		
15902	E.A1.20.739	Bush ... ..	1	DTD.265	C		
15903	E.A1.20.741	Bush ... ..	1	DTD.265	C		
15905	E.A1.20.745	Bush ... ..	1	DTD.265	C		
	E.A1.20.737	Lever, bellcrank ... ..	1	DTD.683	—		
28N/9796	SP.21	Nipple, lubricating ... ..	1	—	C		
28M/13123	A27/JS	Nut, 3/8" BSF, slotted ... ..	1	—	C		
28P/9419528	SP.9/C8	Pin, split, 1/8" dia. x 1" long ... ..	1	—	C		
15904	E.A1.20.743	Washer, special ... ..	2	L.1	C		
549	EEAS.5	Washer, red fibre ... ..	1	BSS.216	C		
21603	EEAS.28/37EU	Washer ... ..	1	DTD.124	C		
	E.A1.20.3159	<b>BRACKET, LEVER ASSEMBLY</b> ... ..	1	—	—		
		Spares for:—					
2954	E.A1.20.771	Bush ... ..	1	S.15	C		
22003	E.A1.20.3135	<b>LEVER, BELLCRANK, C/W LUG, FLAP OPERATION, GROUP</b>	1	—	B		
		Spares for this group are identical with those for group Part No. E.A1.20.735 except for the following deletion and addition					
		Delete:—					
	E.A1.20.737	Lever, bellcrank ... ..	1	DTD.683	—		
		Add:—					
	E.A1.20.3137	Lever, bellcrank ... ..	1	DTD.683	—		
9444	E.A3.20.2607	<b>SHROUD, FLAP, ASSEMBLY (MOD. 860)</b> ... ..	1	—	A/MR		
		Spares for:—					
9402	E.A3.20.2513	Panel, access ... ..	1	L.72	C/MR		
9403	E.A3.20.2515	Panel, access ... ..	1	L.72	C/MR		
4757	E.A3.20.1977	Stop, flap ... ..	8	—	C		

**MAIN PLANE  
WING STRUCTURE, PORT**

Ref. No.	Part No.	Description	No. off	Matl. Spec.	Cl. of Equip.	Plate No.
					M.R. L.M.	
	E.A3.20.15	<b>WING, OUTER, AFT OF SPAR, C/W AIR BRAKE, ASSEMBLY</b>	—	—	—	
		Spares for:—				
9613	E.A1.20.2207	Cover, drag channel end ... ..	9	—	C/MR	
4830	E.A1.20.2209	Cover, drag channel end ... ..	12	—	C/MR	
	E.A3.20.253	<b>FRAME, DIVE BRAKE, RIB 2-2B, GROUP ...</b>	1	—	MR	
		Spares for:—				
	E.A1.20.2057	Crosshead, drag channel ... ..	1	DTD.683	MR	
	E.A3.20.255	<b>PLATE, SIDE, GROUP</b> ... ..	2	—	MR	
		Spares for:—				
17847	E.A1.20.2065	Housing, bearing, assembly ... ..	1	—	C/MR	
20805	E.A1.20.2055	Tube, bracing ... ..	1	—	C/MR	
	E.A3.20.263	<b>FRAME, DIVE BRAKE, CENTRE, GROUP ...</b>	1	—	MR	
		Spares for:—				
20806	E.A1.20.2057	Crosshead, drag channel ... ..	2	DTD.683	MR	
	E.A1.20.2047	<b>PLATE, SIDE, GROUP</b> ... ..	1	—	MR	
		Spares for:—				
17847	E.A1.20.2065	Housing, bearing, assembly ... ..	2	—	C/MR	
	E.A1.20.2077	Tube, bracing ... ..	2	—	MR	
	E.A1.20.2069	<b>FRAME, DIVE BRAKE, INBOARD, GROUP ...</b>	2	—	MR	
		Spares for:—				
20806	E.A1.20.2057	Crosshead, drag channel ... ..	2	DTD.683	MR	
	E.A1.20.2045	<b>PLATE, SIDE, GROUP</b> ... ..	2	—	MR	
		Spares for:—				
17847	E.A1.20.2065	Housing, bearing, assembly ... ..	8	—	C/MR	
	E.A1.20.2055	Tube, bracing ... ..	2	—	MR	
	E.A1.20.2071	<b>FRAME, DIVE BRAKE, OUTBOARD, GROUP ...</b>	2	—	MR	
		Spares for:—				
20806	E.A1.20.2057	Crosshead, drag channel ... ..	2	DTD.683	MR	
	E.A1.20.2047	<b>PLATE, SIDE, GROUP</b> ... ..	2	—	MR	
		Spares for:—				
17847	E.A1.20.2065	Housing, bearing, assembly ... ..	8	—	C/MR	
	E.A1.20.2077	Tube, bracing ... ..	2	—	MR	
1139	E.A3.20.367	<b>HINGE, AILERON, CENTRE, GROUP ...</b>	1	—	B	
		Spares for:—				
616	E.A1.20.511	Bolt, special ... ..	1	S.11	C	
21110	E.A1.20.325	Bracket, aileron, centre hinge ... ..	1	DTD.683	C	
5247	E.A1.20.693	Bracket, aileron, shroud, angle attachment ... ..	2	—	C	
	E.A3.20.371	<b>FITTING, CENTRE HINGE, GROUP ...</b>	1	—	—	
		Spares for:—				
2A/9500417	RANSOME AND	Ballrace ... ..	1	—	B	
28N/12452	MARLES CK. ½	Circlip, internal ... ..	1	—	C	
	AGS.2030/57					

**MAIN PLANE  
WING STRUCTURE, PORT**

Ref. No.	Part No.	Description	No. off	Matl. Spec.	Cl. of Equip.		Plate No.
					M.R.	L.M.	
		1 2 3 4 5 6					
617	E.A1.20.1433	Nut, special (Make from Ref. A27/CT ...)	1	M.S.		C	
1430	E.A3.20.375	Washer, special ...	2	DTD.683		C	
9564	E.A1.20.2091	Housing, ballrace, assembly ...	2	—		MR	
9321	E.A1.20.603	<b>LEVER, AILERON CONTROL, GROUP</b> ...	1	—		B/MR	
		Spares for:—					
619	E.A1.20.641	<b>ARM, LEVER, C/W BOSS, GROUP</b> ...	1	—		C	
		Spares for:—					
7218	E.A1.20.639	Arm, lever ...	1	—		C/MR	
	E.A1.20.607	Boss ...	1	L.40		—	
620	E.A1.20.609	Bolt, special, pivot, for aileron control lever ...	1	L.40		C	
	E.A1.20.373	<b>MEMBER, TORQUE, REAR WALL, ASSEMBLY</b> ...	—	—		—	
		Spares for:—					
9559	E.A3.20.2079	Bracket, aileron hinge, inboard ...	1	DTD.300		B/MR	
17799	E.A1.20.925	Bracket, flap shroud, rib 4A ...	1	—		C	
17842	E.A1.20.1753	Bracket, flap shroud, rib 3B, outer ...	1	—		C	
17817	E.A1.20.659	Bracket, flap shroud, rib 3B, inner ...	1	—		C	
17815	E.A1.20.657	Bracket, flap shroud, rib 3 ...	1	—		C	
17813	E.A1.20.629	Bracket, flap shroud, rib 2B ...	1	—		C	
18363	E.A3.20.2299	Bracket, flap shroud, rib 2, outer ...	1	—		C	
17795	E.A1.20.395	Bracket, flap shroud, rib 2, inner ...	1	—		C	
17797	E.A1.20.413	Bracket, flap shroud, rib 2A ...	1	—		C	
17819	E.A1.20.753	<b>BRACKET, LEVER, ASSEMBLY</b> ...	1	—		B	
		Spares for:—					
2954	E.A1.20.771	Bush ...	1	S.15		C	
5202	E.A1.20.735	<b>LEVER, BELLCRANK, FLAP OPERATION, GROUP</b> ...	1	—		B	
		Spares for this group are identical with those for group Part No. E.A1.20.735 on Page 534					
621	E.A1.20.3147	Nut, special, drag channel and crosshead retaining	42	DTD.683		C	
3034	E.A1.20.2351	Panel, access, dive brake ...	1	—		C	
622	E.A1.20.583	Pin, special, aileron hinge, inboard (Pre-Mod.617)	1	S.65		C	
623	E.A1.20.647	Pin, special, aileron hinge, outboard (Pre-Mod.617)	1	S.65		C	
4436	E.A3.20.2077	Pin, special, aileron hinge, inboard (Mod.617)	1	S.65		C	
4437	E.A3.20.2073	Pin, special, aileron hinge, outboard (Mod.617)	1	S.65		C	
	E.A1.20.55	<b>RIB, No. 3, TRAILING EDGE, ASSEMBLY</b> ...	1	—		—	
		Spares for:—					
	E.A1.20.2189	Bolt, adjuster, air brake roller ...	1	—		—	
	E.A1.20.2195	Bracket, adjuster, air brake roller ...	1	—		—	
		Attaching parts for E.A1.20.2195:—					
	E.A1.20.2187	Bolt: ...	1	—		—	
40267	E.A1.20.2227	Bush, spacing ...	1	—		MR	
28M/1011467	A27/ES	Nut, 1/4" BSF ...	1	—		C	
28W/9419487	SP.16/E	Washer ...	1	—		C	
40265	E.A1.20.2191	Roller, adjustable, air brake ...	1	—		MR	
		Attaching parts for E.A1.20.2191:—					
	E.A1.20.2183	Bolt: ...	1	—		MR	
40269	E.A1.20.2939	Bush, spacing ...	1	—		MR	
28M/5808571	A27/GS	Nut, 5/8" BSF ...	1	—		C	
28W/9419488	SP.16/G	Washer ...	1	—		C	

**MAIN PLANE  
WING STRUCTURE, PORT**

Ref. No.	Part No.	Description						No. off	Matl Spec.	Cl. of Equip.		Plate No.
		1	2	3	4	5	6			M.R.	L.M.	
40266	E.A1.20.2193							2	—		MR	
								Attaching parts for E.A1.20.2193:—				
40270	E.A1.20.2165							1	—		MR	
40268	E.A1.20.2229							1	—		MR	
28M/5808571	A27/GS							1	—		C	
28W/9419488	SP.16/G							1	—		C	
	E.A1.20.57							—	—		—	
								<b>RIB 4, AFT, ASSEMBLY</b>				
								Spares for:—				
21720	E.A1.20.687							2	S.11		C	
21263	E.A1.20.689							1	L.40		C	
13106	E.A1.20.691							1	L.40		C	
1027	EEAS.1/2½C							11	S.96		C	
1028	EEAS.1/3C							2	S.96		C	
1034	EEAS.1/3E							22	S.96		C	
6813	E.A3.20.2531							1	—		B	
								<b>SHROUD, OUTBOARD FLAP, GROUP (MOD.860)</b>				
								Spares for:—				
	E.A3.20.2543							2	L.72		—	
3678	E.A1.20.411							1	—		C	
1025	EEAS.1/1C							40	S.96		C	
4757	E.A3.20.1977							4	—		C	
3065	E.A3.20.945							1	—		B	
3067	E.A3.20.946							1	—		B	
3064	E.A3.20.947							1	—		B	
3066	E.A3.20.948							1	—		B	
								—	—		—	
								<b>SKINS, TOP AND BOTTOM, ASSEMBLY</b>				
								Spares for:—				
3649	E.A3.20.1105*							255	S.96		C	
	or											
3682	E.A1.20.5321							255	S.96		C	
	E.A3.20.2619							—	—		—	
								<b>SKIN, PANEL, TOP, AFT OF MAIN SPAR</b>				
								Spares for:—				
4831	E.A1.20.189							18	—		C	
3682	E.A1.20.5321							18	—		C	
								Attaching parts for E.A1.20.5321:—				
16109	E.A1.5325							1	—		C	
28M/10328	AGS.2002/C/1							1	—		C	
28W/9419475	SP.15/C							1	—		C	
17849	E.A1.20.2081							<b>ROLLER, BRACKET, ASSEMBLY, BETWEEN RIBS 2 AND 3</b>				
								Consisting of:—				
28D/9453970	A25/150							1	—		C	
	E.A1.20.2083							1	—		—	
40242	E.A1.20.2085							1	—		—	
28M/5808573	A27/CS							1	—		C	
28P/19227	SP.90/C6							1	—		C	
5023	E.A1.20.2087							2	—		C	
	AS.2811/7/044							1	T.4		LM	
28W/9419475	SP.15/C							1	—		C	

**MAIN PLANE  
WING STRUCTURE, PORT**

Ref. No.	Part No.	Description	No. off	Matl. Spec.	Cl. of Equip.		Plate No.
					M.R.	L.M.	
		1 2 3 4 5 6					
17850	E.A1.20.2213	<b>ROLLER, BRACKET, ASSEMBLY, BETWEEN RIBS 3 AND 4</b> Consisting of:—	6	—		C	
28D/9453970	A25/15C	Bolt, 2 BA ... ..	1	—		C	
	E.A1.20.2215	Bracket ... ..	1	—		—	
40242	E.A1.20.2085	Bush, spacing ... ..	1	—		C	
28M/5808573	A27/CS	Nut, 2 BA ... ..	1	—		C	
28P/19227	SP.90/C6	Pin, split ... ..	1	—		C	
5023	E.A1.20.2087	Roller, Oilite ... ..	2	—		C	
	AS.2811/7/044	Tube, distance x 17 SWG ... ..	1	T.4		LM	
28W/9419475	SP.15/C	Washer ... ..	1	—		C	
		Attaching parts for E.A1.20.2081 and E.A1.20.2213:—					
28M/10288	AGS.2001/C/1	Nut, 2 BA ... ..	3	—		C	
1468	EEAS.1/2C	Screw, 2 BA ... ..	3	S.96		C	
28W/9419475	SP.15/C	Washer ... ..	3	—		C	
	E.A3.20.2791	<b>SKIN, PANEL, BOTTOM, AFT OF MAIN SPAR</b> Spares for:—	—	—		—	
4831	E.A1.20.189	Bracket, eye-bolt ... ..	29	—		C	
3682	E.A1.20.5321	Eye-bolt ... ..	29	—		C	
		Attaching parts for E.A1.20.5321:—					
16109	E.A1.20.5325	Bolt, special ... ..	1	—		C	
28M/10328	AGS.2002/C/1	Nut, 2 BA ... ..	1	—		C	
28W/9419402	SP.13/C	Washer ... ..	1	—		C	
17849	E.A1.20.2081	<b>ROLLER, BRACKET, ASSEMBLY, BETWEEN RIBS 3 AND 4</b> Consisting of:—	6	—		C	
28D/9453970	A25/15C	Bolt, 2 BA ... ..	1	—		C	
	E.A1.20.2083	Bracket ... ..	1	—		—	
40242	E.A1.20.2085	Bush, spacing ... ..	1	—		C	
28M/5808573	A27/CS	Nut, 2 BA ... ..	1	—		C	
28P/19227	SP.90/C6	Pin, split ... ..	1	—		C	
5023	E.A1.20.2087	Roller, Oilite ... ..	2	—		C	
	AS.2811/7/044	Tube, distance x 17 SWG ... ..	1	T.4		LM	
28W/9419475	SP.15/C	Washer ... ..	1	—		C	
17850	E.A1.20.2213	<b>ROLLER, BRACKET, ASSEMBLY, BETWEEN RIBS 2 AND 3</b> Consisting of:—	6	—		C	
28D/9453970	A25/15C	Bolt, 2 BA ... ..	1	—		C	
	E.A1.20.2215	Bracket ... ..	1	—		—	
40242	E.A1.20.2085	Bush, spacing ... ..	1	—		C	
28M/5808573	A27/CS	Nut, 2 BA ... ..	1	—		C	
28P/19227	SP.90/C6	Pin, split ... ..	1	—		C	
5023	E.A1.20.2087	Roller, Oilite ... ..	2	—		C	
	AS.2811/7/044	Tube, distance x 17 SWG ... ..	1	T.4		LM	
28W/9419475	SP.15/C	Washer ... ..	1	—		—	

**MAIN PLANE  
WING STRUCTURE, PORT**

Ref. No.	Part No.	Description						No. off	Mati. Spec.	Cl. of Equip.		Plate No.
		1	2	3	4	5	6			M.R.	L.M.	
		Attaching parts for E.A1.20.2081 and E.A1.20.2213:—										
28M/10288	AGS.2001/C/1							3	—		C	
1468	EEAS.1/2C							3	S.96		C	
	E.A1.20.2089							2	DTD.683		MR	
	E.A1.20.2201							1	—		MR	
	E.A1.20.2203							1	—		MR	
	E.A1.20.2205							1	—		MR	
9477	E.A3.20.2239							6	Laminated Alumn.		C	
5120	E.A3.20.2365							1	L.40		C	

Restricted

Ref. No.	Part No.	1 2 3 4 5 6						No. off	Matl. Spec.	Cl. of Equip.	Plate No.
										M.R.	

<sup>537</sup>  
Pages ~~537~~ to 546 not issued  
541



.

**MAIN PLANE  
WING STRUCTURE, STARBOARD**

Ref. No	Part No.	Description	No. off	Mati. Spec.	Cl. of Equip.		Plate No.
					M.R.	L.M.	
		1 2:3 4:5 6					
	E.A.2.20.2	<b>WING STRUCTURE, STARBOARD, ASSEMBLY</b> ...	—	—	—		
		Spares for:—					
551	E.A.1.20.1330	Angle, attachment, rear cowl to fire wall ...	1	—	—	C	
9542	E.A.1.20.1224	<b>BALL JOINT, UNDERCARRIAGE SIDE STAY ATTACHMENT, GROUP</b>	1	—	—	B	
		Consisting of:—					
583	E.A.1.20.1229	<b>BALL BEARING, SPHERICAL SEATED, GROUP</b> ...	1	—	—	C	
		Spares for:—					
	E.A.1.20.1231	Bush, bearing ...	2	DTD.197	—	—	
585	E.A.1.20.1233	Bolt, special, retaining ring attachment ...	8	S.11	—	C	
587	E.A.1.20.336	Bracket, attachment ...	1	DTD.683	—	C	
6335	E.A.3.00.243	Bush bearing (E.A.1.20.1216 and E.A.1.20.1218, wired together)	1	DTD.412	—	C	
592	E.A.1.20.1225	Dowel, special, ball bearing locating ...	2	S.11	—	C	
593	E.A.1.20.1235	Dowel, special, retaining ring locating ...	1	S.11	—	C	
28N/9156370	SP.2)	Nipple, lubricating ...	1	—	—	C	
594	E.A.1.20.1219	Ring, bottom, retaining ...	1	DTD.124	—	C	
596	E.A.1.20.1222	Ring, top, retaining ...	1	DTD.124	—	C	
552	E.A.3.20.189	Bolt, special, undercarriage attachment bracket, top	2	S.65	—	C	
553	E.A.1.20.601	Bolt, special, aileron control hinge on rib 4, at outer wing	1	S.11	—	C	
554	E.A.1.20.947	Bolt, special, undercarriage attachment bracket ...	1	S.65	—	C	
555	E.A.1.20.949	Bolt, special, undercarriage attachment bracket, bottom	2	S.65	—	C	
556	E.A.1.20.973	Bolt, special, undercarriage bracket and aft rib 6 attachment to main spar	2	S.65	—	C	
557	E.A.1.20.1017	Bolt, special, undercarriage attachment bracket ...	4	S.65	—	C	
3409	E.A.3.20.1517	Bolt, special, shear, undercarriage bracket ...	6	S.96	—	C	
558	E.A.1.20.2297	Bolt, special, undercarriage bracket and aft rib 6 attachment to main spar	2	S.65	—	C	
13221	E.A.3.20.3407	Bolt, special, engine cowl attachment to engine ring	22	S.11 or S.105	—	C	
560	E.A.1.20.634	<b>BOSS, AND LEVERS, AILERON CONTROL HINGE ON RIB 4, OUTER WING, GROUP</b>	1	—	—	B	
		Spares for:—					
	E.A.1.20.596	Arm, curved lever ...	1	—	—	—	
	E.A.1.20.623	Arm, straight lever ...	1	—	—	—	
2A/9500412	SKEFKO						
	CBS.3	Ballrace ...	2	—	—	B	
562	E.A.1.20.542	Bracket, undercarriage jack attachment ...	1	S.65	—	C	
564	E.A.1.20.2984	Bracket, undercarriage attachment stub ...	1	DTD.683	—	C	
20907	E.A.3.20.3028	<b>COWLING, REMOVABLE, AT END OF JET PIPE, ASSEMBLY</b>	1	—	—	B/MR	
		Spares for:—					
2956	E.A.1.20.8261	Cone, jet end ...	1	—	—	C	

**MAIN PLANE  
WING STRUCTURE, STARBOARD**

Ref. No	Part No.	Description	No. off	Matl. Spec.	Cl. of Equip.	Plate No.
					M.R. L.M.	
		1 2 3 4 5 6				
17747	E.A3.00.230	<b>EXTENSION, WING ASSEMBLY (E.A1.00.1866)</b> ...	1	—	A	
		Spares for:—				
3639	E.A1.20.2471	Plate, locking, explosive bolt holes ...	2	—	C	
3638	E.A1.20.2473	Plate, blanking, explosive bolt holes ...	2	—	C	
4307	EEAS.2/1½C	Screw, 2 BA, c'sk. head 120° ...	12	HTS	C	
	E.A1.20.1874	<b>SKIN, TOP, ASSEMBLY</b> ...	—	—	—	
		Spares for:—				
3647	E.A3.20.1063	Panel, access, explosive bolt ...	1	—	C	
3646	E.A3.20.1065	Panel, access, explosive bolt ...	1	—	C	
	E.A3.20.3414	<b>GENERATOR, VORTEX, ASSEMBLY</b> ...	—	—	—	
		Spares for:—				
26671	E.A3.20.3411	Generator, vortex ...	2	L.72	C	
	E.A1.51.2	Mounting, Engine and Attachments (see Page 637) ...	—	—	—	
565	E.A1.20.1157	Mounting, jet pipe at rear cowl ring ...	2	—	C	
3027	E.A1.20.261	Nacelle, engine, upper, aft ...	1	—	A	
3028	E.A1.20.264	<b>NACELLE, ENGINE, LOWER, AFT, GROUP</b> ...	1	—	A	
		Spares for:—				
17812	E.A1.20.620	<b>ARMS, CENTRE LEVER, AILERON CONTROL GROUP</b>	1	—	B	
		Spares for:—				
568	E.A1.20.621	<b>ARM, CENTRE LEVER, GROUP</b> ...	2	—	B	
		Consisting of:—				
569	E.A1.20.469	Arm, lever ...	1	L.40	C	
2A/9500463	SKEFKO					
	CBA.2	Ballrace ...	1	—	B	
75	EEAS.3/D	Housing, ballrace ...	1	L.40	C	
92	EEAS.4/20C	Washer, packing ...	2	L.72	C	
6523	E.A3.45.449	Bolt, special, lever arm ...	6	S.95	C	
	E.A1.20.346	<b>MOUNTING, C/W BOSS, GROUP</b> ...	1	—	—	
		Spares for:—				
2A/9500412	SKEFKO					
	CBS.3	Ballrace ...	2	—	B	
570	E.A1.20.467	Bolt, special ...	1	L.40	C	
571	E.A1.20.579	Boss, lever ...	1	L.40	C	
572	E.A1.20.463	Tube, distance ...	1	L.40	C	
5162	E.A3.20.1809	Nut, special ...	2	S.80	C	
5163	E.A3.20.1811	Nut, special ...	2	S.80	C	
1432	E.A3.20.314	Panel, closing bottom skin, outer wing ...	1	—	C	
1434	E.A3.20.356	Panel, closing bottom skin, outer wing ...	1	—	C	
3056	E.A3.20.380	Panel, closing bottom skin, outer wing ...	1	—	C	
578	E.A1.20.2234	Panel, closing bottom skin, outer wing ...	1	—	C	
1874	E.A3.20.097	Pin, special, undercarriage attachment bracket ...	1	S.92	C	
581	E.A1.20.2987	Pin, special, stub attachment ...	1	S.11	C	
	E.A1.20.203	Ring, false spar connecting ...	1	—	—	
1026	EEAS.1/1½C	Screw, 2 BA, c'sk. head ...	87	HTS	C	
1565	EEAS.1/3½C	Screw, 2 BA, c'sk. head ...	20	HTS	C	
9634	E.A3.20.1184	Shroud, aileron inboard hinge ...	1	—	C	
	E.A3.20.6	Spar, main ...	1	—	MR	

**MAIN PLANE  
WING STRUCTURE, STARBOARD**

Ref. No.	Part No.	1 2 3 4 5 6	Description	No. off	Matl. Spec.	Cl. of Equip.	Plate No.
						M.R. L.M.	
598	E.A1.20.2982		Strut, undercarriage tie between jack attachment bracket and side stay	1	DTD.683	C	
599	E.A1.20.2989		Stud, special, for undercarriage jack attachment bracket end	1	S.11	C	
5164	E.A3.20.1057		Washer, special	9	L.40	C	
601	E.A1.20.2295		Washer, special, for undercarriage bracket bottom bolt	2	S.11	C	
602	E.A1.20.2327		Washer, special, for undercarriage bracket bottom bolt	2	S.11	C	
600	E.A1.20.2991		Washer, special, for undercarriage jack attachment bracket end	1	DTD.126	C	
	E.A3.20.4		<b>WING, OUTER, LEADING EDGE ASSEMBLY</b>	—	—	—	
			Spares for:—				
	E.A3.20.8		<b>NOSE BAY NO. 5, SKINS, ASSEMBLY</b>	—	—	—	
			Spares for:—				
3649	E.A3.20.1105* or		Eyebolt	42	S.96	C	
3682	E.A3.20.5321		Eyebolt	42	S.96	C	
	E.A3.20.10		<b>NOSE BAY NO. 6, SKINS, ASSEMBLY</b>	—	—	—	
			(Supplied to Drg. E.A3.00.542 for spares purposes)				
3649	E.A3.20.1105* or		Eyebolt	34	S.96	C	
3682	E.A3.20.5321		Eyebolt	34	S.96	C	
	E.A2.20.8		<b>WING, INNER LEADING EDGE, ASSEMBLY</b>	—	—	—	
			Spares for:—				
9183	E.A1.20.1349		Block, stop, for undercarriage	1	L.40	C	
603	E.A1.20.1251		Bolt, special, undercarriage "up" lock hook pivot	1	S.65	C	
9243	E.A3.20.1154		Bracket, undercarriage "up" lock	1	DTD.683	C	
	E.A3.20.1208		<b>BRACKET, RIB 7 AND MAIN UNDERCARRIAGE, ASSEMBLY</b>	—	—	—	
			Spares for:—				
25790	E.A3.20.184		Plate, tie upper (supplied to Drg. E.A3.00.666 for spares purposes)	1	DTD.687	C	
6368	E.A3.20.2573		<b>HOOK, UNDERCARRIAGE "UP" LOCK, GROUP (MOD. 1176)</b>	1	—	C	
			Consisting of:—				
606	E.A1.20.1243		Bush, bearing	2	DTD.197	C	
	E.A3.20.2571		Hook	1	S.65	—	
3030	E.A1.20.1118		Panel, removable, inner wing leading edge, top	1	—	C	
3032	E.A1.20.1120		Panel, removable, inner wing leading edge, top	1	—	C	
3033	E.A1.20.1343		Panel, detachable nose, inner wing leading edge (supplied to Drg. E.A3.00.237)	1	—	C	

**MAIN PLANE  
WING STRUCTURE, STARBOARD**

Ref. No.	Part No.	1 2 3 4 5 6	Description	No. off	Matl. Spec.	Cl. of Equip.	Plate No.
						M.R. L.M.	
6039	E.A1.20.1317		<b>SKIN, OUTER BOTTOM, ASSEMBLY</b> ... ..	1	—	C	
			Spares for:—				
17865	E.A1.20.3191		Cover, oil sump ... ..	1	—	C	
	E.A1.20.7053		<b>SKIN, BOTTOM, ASSEMBLY</b> ... ..	—	—	—	
			Spares for:—				
18308	E.A3.20.909		Stop, door ... ..	1	DTD.683	C	
9184	E.A1.20.1355		Shim, undercarriage stop ... ..	1	L.72	C	
18513	E.A3.20.2969		Shim, undercarriage "up" bracket ... ..	1	L.72	C	
638	E.A1.20.1247		Spring, tension, "up" lock hook ... ..	1	—	C	
9185	E.A1.20.3149		Stop, undercarriage "up" lock ... ..	1	—	C	
	E.A3.20.12		<b>WING, CENTRE, AFT OF SPAR, ASSEMBLY</b> ... ..	—	—	—	
			Spares for:—				
	E.A1.20.8271		<b>MEMBER, TORQUE, REAR WALL, ASSEMBLY</b> ... ..	—	—	—	
			Spares for:—				
7205	E.A1.20.751		<b>BRACKET, LEVER ASSEMBLY</b> ... ..	2	—	B/MR	
			Spares for:—				
2954	E.A1.20.771		Bush ... ..	1	S.15	C	
5202	E.A1.20.735		<b>LEVER, BELLCRANK, FLAP OPERATION, GROUP</b>	1	—	B	
			Spares for this group are identical with those for group Part No. E.A1.20.735 on Page 534				
9443	E.A3.20.2608		<b>SHROUD, FLAP, ASSEMBLY (MOD. 860)</b> ... ..	1	—	A/MR	
			Spares for:—				
9402	E.A3.20.2513		Panel, access ... ..	1	L.72	C/MR	
9403	E.A3.20.2515		Panel, access ... ..	1	L.72	C/MR	
4757	E.A3.20.1977		Stop, flap ... ..	3	—	C	
	E.A3.20.16		<b>WING, OUTER, AFT OF SPAR, C/W AIR BRAKE, ASSEMBLY</b>	—	—	—	
			Spares for:—				
9613	E.A1.20.2207		Cover, drag channel end ... ..	9	—	C/MR	
4830	E.A1.20.2209		Cover, drag channel end ... ..	12	—	C/MR	
	E.A3.20.253		<b>FRAME, DIVE BRAKE, RIB 2-2B, GROUP</b> ... ..	1	—	MR	
			Spares for:—				
	E.A1.20.2057		Crosshead, drag channel ... ..	1	DTD.683	MR	
	E.A3.20.255		<b>PLATE, SIDE, GROUP</b> ... ..	1	—	MR	
			Spares for:—				
17847	E.A1.20.2065		Housing, bearing assembly ... ..	1	—	MR	
20805	E.A1.20.2055		Tube, bracing ... ..	1	—	C/MR	
	E.A3.20.264		<b>FRAME, DIVE BRAKE, CENTRE, GROUP</b> ... ..	1	—	MR	
			Spares for:—				
	E.A1.20.2057		Crosshead, drag channel ... ..	2	DTD.683	MR	

**MAIN PLANE  
WING STRUCTURE, STARBOARD**

Ref. No.	Part No.	Description 1 2 3 4 5 6	No. off	Matl. Spec.	Cl. of Equip.		Plate No.
					M.R.	L.M.	
	E.A1.20.2047	<b>PLATE, SIDE, GROUP</b> ... ..	1	—		MR	
	Spares for:—						
17847	E.A1.20.2065	Housing, bearing, assembly ... ..	2	—		C/MR	
	E.A1.20.2077	Tube, bracing ... ..	2	—		MR	
	E.A1.20.2069	<b>FRAME, DIVE BRAKE, INBOARD, GROUP</b> ... ..	2	—		MR	
	Spares for:—						
20806	E.A1.20.2057	Crosshead, drag channel ... ..	2	DTD.683		MR	
	E.A1.20.2047	<b>PLATE, SIDE, GROUP</b> ... ..	2	—		MR	
	Spares for:—						
17847	E.A1.20.2065	Housing, bearing, assembly ... ..	8	—		C/MR	
20805	E.A1.20.2055	Tube, bracing ... ..	2	—		C/MR	
	E.A1.20.2071	<b>FRAME, DIVE BRAKE, OUTBOARD, GROUP</b> ... ..	2	—		MR	
	Spares for:—						
20806	E.A1.20.2057	Crosshead, drag channel ... ..	2	DTD.683		MR	
	E.A1.20.2047	<b>PLATE, SIDE, GROUP</b> ... ..	2	—		MR	
	Spares for:—						
17847	E.A1.20.2065	Housing, bearing, assembly ... ..	8	—		C/MR	
	E.A1.20.2077	Tube, bracing ... ..	2	—		MR	
1139	E.A3.20.367	<b>HINGE, AILERON CENTRE, GROUP</b> ... ..	1	—		A	
	Spares for:—						
616	E.A1.20.511	Bolt, special ... ..	1	S.11		C	
21110	E.A1.20.325	Bracket, aileron centre hinge ... ..	1	DTD.683		C	
5247	E.A1.20.693	Bracket, aileron shroud angle attachment ... ..	2	—		C	
	E.A1.20.374	<b>FITTING, CENTRE HINGE, GROUP</b> ... ..	1	—		—	
	Spares for:—						
2A/9500417	RANSOME AND MARLES CK. 5/8	Ballrace ... ..	1	—		B	
28N/12452	AGS.2030/57	Circlip, internal ... ..	1	—		C	
617	E.A1.20.1433	Nut, special (Made from Ref. A27/CT) ... ..	1	M.S.		C	
1430	E.A2.20.375	Washer, special ... ..	2	DTD.683		C	
9564	E.A1.20.2091	Housing, ballrace, assembly ... ..	2	—		MR	
9322	E.A1.20.604	<b>LEVER, AILERON CONTROL, GROUP</b> ... ..	1	—		C/MR	
	Spares for:—						
619	E.A1.20.641	<b>ARM, LEVER, C/W BOSS, GROUP</b> ... ..	1	—		C	
	Spares for:—						
7218	E.A1.20.639	Arm, lever ... ..	1	—		C	
	E.A1.20.607	Boss ... ..	1	L.40		—	
620	E.A1.20.609	Bolt, special, pivot, for aileron control lever ... ..	1	L.40		C	
	E.A1.20.374	<b>MEMBER, TORQUE, REAR WALL, ASSEMBLY</b> ... ..	—	—		—	
	Spares for:—						
9559	E.A3.20.2079	Bracket, aileron hinge, inboard ... ..	1	DTD.300		B/MR	
17800	E.A1.20.426	Bracket, flap shroud, rib 4A ... ..	1	—		C	
17801	E.A1.20.430	Bracket, flap shroud, rib 3B outer ... ..	1	—		C	
18364	E.A3.20.2301	Bracket, flap shroud, rib 3B inner ... ..	1	—		C	
17816	E.A1.20.658	Bracket, flap shroud, rib 3 ... ..	1	—		C	
17814	E.A1.20.630	Bracket, flap shroud, rib 2B ... ..	1	—		C	
17818	E.A1.20.661	Bracket, flap shroud, rib 2 outer ... ..	1	—		C	
17796	E.A1.20.396	Bracket, flap shroud, rib 2 inner ... ..	1	—		C	
17798	E.A1.20.414	Bracket, flap shroud, rib 2A ... ..	1	—		C	
17800	E.A1.20.426	<b>BRACKET, LEVER, ASSEMBLY</b> ... ..	1	—		B	
	Spares for:—						
2954	E.A1.20.771	Bush ... ..	1	S.15		C	

**MAIN PLANE  
WING STRUCTURE, STARBOARD**

Ref. No.	Part No.	Description	No. off	Matl. Spec.	Cl. of Equip.		Plate No.
					M.R.	L.M.	
		1 2 3 4 5 6					
5202	E.A1.20.735	<b>LEVER, BELLCRANK, FLAP OPERATION, GROUP</b> Spares for this group are identical with those for group Part No. E.A1.20.735 on Page 536					
17822	E.A1.20.759	<b>BRACKET, LEVER, ASSEMBLY</b> ... ..	1	—		B	
2954	E.A1.20.771	Spares for:— <b>Bush</b> ... ..	1	S.15		C	
5202	E.A1.20.735	<b>LEVER, BELLCRANK, FLAP OPERATION, GROUP</b> Spares for this group are identical with those for group Part No. E.A1.20.735 on Page 536	1	—		B	
621	E.A1.20.3147	<b>Nut, special, drag channel and crosshead retaining</b>	42	D.TD.683		C	
3035	E.A1.20.2352	<b>Panel, access, dive brake</b> ... ..	1	—		C	
622	E.A1.20.583	<b>Pin, special, aileron hinge, inboard (Pre-Mod.617)</b>	1	S.65		C	
623	E.A1.20.647	<b>Pin, special, aileron hinge, outboard (Pre-Mod.617)</b>	1	S.65		C	
4436	E.A3.20.2077	<b>Pin, special, aileron hinge, inboard (Mod.617)</b> ...	1	S.65		C	
4437	E.A3.20.2073	<b>Pin, special, aileron hinge, outboard (Mod.617)</b> ...	1	S.65		C	
	E.A1.20.56	<b>RIB, No. 3, TRAILING EDGE, ASSEMBLY</b> ... ..	1	—		—	
		Spares for:—					
	E.A1.20.2189	<b>Bolt, adjuster, air brake roller</b> ... ..	1	—		—	
	E.A1.20.2195	<b>Bracket, adjuster, air brake roller</b> ... ..	1	—		—	
		Attaching parts for E.A1.20.2195:—					
	E.A1.20.2187	<b>Bolt</b> ... ..	1	—		—	
40267	E.A1.20.2227	<b>Bush, spacing</b> ... ..	1	—		MR	
28M/1011467	A27/ES	<b>Nut, 1/8" BSF</b> ... ..	1	—		C	
28W/8419487	SP.16/E	<b>Washer</b> ... ..	1	—		C	
40265	E.A1.20.2191	<b>Roller, adjustable, air brake</b> ... ..	1	—		MR	
		Attaching parts for E.A1.20.2191:—					
	E.A1.20.2183	<b>Bolt</b> ... ..	1	—		—	
40269	E.A1.20.2939	<b>Bush, spacing</b> ... ..	1	—		MR	
28M/5808571	A27/GS	<b>Nut, 1/8" BSF</b> ... ..	1	—		C	
28W/9419488	SP.16/G	<b>Washer</b> ... ..	1	—		C	
40266	E.A1.20.2193	<b>Roller, air brake</b> ... ..	2	—		MR	
		Attaching parts for E.A1.20.2193:—					
40270	E.A1.20.2185	<b>Bolt</b> ... ..	1	—		MR	
40268	E.A1.20.2229	<b>Bush, spacing</b> ... ..	1	—		MR	
28M/5808571	A27/GS	<b>Nut, 1/8" BSF</b> ... ..	1	—		C	
28W/9419488	SP.16/G	<b>Washer</b> ... ..	1	—		C	
	E.A1.20.58	<b>RIB 4, AFT, ASSEMBLY</b> ... ..	—	—		—	
		Spares for:—					
21720	E.A1.20.687	<b>Bolt, stop, aileron</b> ... ..	2	S.11		C	
21263	E.A1.20.689	<b>Mounting, aileron stop bolt</b> ... ..	1	L.40		C	
13106	E.A1.20.691	<b>Mounting, aileron stop bolt</b> ... ..	1	L.40		C	
1027	EEAS.1/2 1/2 C	<b>Screw, 2 BA, c'sk. head, 120°</b> ... ..	11	S.96		C	
1028	EEAS.1/3 C	<b>Screw, 2 BA, c'sk. head, 120°</b> ... ..	2	S.96		C	
1034	EEAS.1/3 E	<b>Screw, 2 BA, c'sk. head, 120°</b> ... ..	22	S.96		C	

**MAIN PLANE  
WING STRUCTURE, STARBOARD**

Ref. No.	Part No.	Description	No. off	Matl. Spec.	Cl. of Equip.		Plate No.
					M.R.	L.M.	
6814	E.A3.20.2533	<b>SHROUD, OUTBOARD, FLAP, GROUP (MOD.860)</b>	1	—		B	
		Spares for:—					
	E.A3.20.2544	Panel, access ... ..	2	L.72		—	
3679	E.A1.20.412	Rib, No. 4, outer, outer wing ... ..	1	—		C	
1025	EEAS.1/1C	Screw, 2 BA, c'sk. head, 120° ... ..	40	S.96		C	
4757	E.A3.20.1977	Stop, flap ... ..	11	—		C	
3065	E.A3.20.945	Shroud, outboard, hinged aileron ... ..	1	—		B	
3067	E.A3.20.946	Shroud, outboard, hinged aileron ... ..	1	—		B	
3064	E.A3.20.947	Shroud, inboard, hinged aileron ... ..	1	—		B	
3066	E.A3.20.948	Shroud, inboard, hinged aileron ... ..	1	—		B	
	—	<b>SKINS, TOP AND BOTTOM, ASSEMBLY ... ..</b>	—	—		—	
		Spares for:—					
3649	E.A3.20.1150*	Eye-bolt ... ..	255	S.96		C	
	or						
3682	E.A1.20.5321	Eye-bolt ... ..	255	S.96		C	
	E.A3.20.2620	<b>SKIN, PANEL, TOP, AFT OF MAIN SPAR ... ..</b>	—	—		—	
		Spares for:—					
4831	E.A1.20.189	Bracket, eye-bolt ... ..	18	—		C	
3682	E.A1.20.5321	Eye-bolt ... ..	18	—		C	
		Attaching parts for E.A1.20.5321:—					
16109	E.A1.20.5325	Bolt, special ... ..	1	—		C	
28M/10328	AGS.2002/C/1	Nut, 2 BA ... ..	1	—		C	
28W/9419475	SP.15/C	Washer ... ..	1	—		C	
17849	E.A1.20.2081	<b>ROLLER, BRACKET, ASSEMBLY, BETWEEN RIBS 2 AND 3</b>	3	—		C	
		Consisting of:—					
28D/9453970	A25/15C	Bolt, 2 BA ... ..	1	—		C	
	E.A1.20.2083	Bracket ... ..	1	—		C	
40242	E.A1.20.2085	Bush, spacing ... ..	1	—		C	
28M/5808573	A27/CS	Nut, 2 BA ... ..	1	—		C	
28P/19227	SP.90/C6	Pin, split ... ..	1	—		C	
5023	E.A1.20.2087	Roller, Oilite ... ..	2	—		C	
28W/9419475	AS.2811/7/044	Tube, distance x 17 SWG ... ..	1	T.4		LM	
	SP.15/C	Washer ... ..	1	—		C	
17850	E.A1.20.2213	<b>ROLLER, BRACKET, ASSEMBLY, BETWEEN RIBS 3 AND 4</b>					
		Consisting of:—					
28D/9453970	A25/15C	Bolt, 2 BA ... ..	1	—		C	
	E.A1.20.2215	Bracket ... ..	1	—		C	
40242	E.A1.20.2055	Bush, spacing ... ..	1	—		C	
28M/5808573	A27/CS	Nut, 2 BA ... ..	1	—		C	
28P/19227	SP.90/C6	Pin, split ... ..	1	—		C	
5023	E.A1.20.2087	Roller, Oilite ... ..	1	—		C	
28W/9419475	AS.2811/7/044	Tube, distance x 17 SWG ... ..	1	T.4		LM	
	SP.15/C	Washer ... ..	1	—		C	
		Attaching parts for E.A1.20.2081 and E.A1.20.2213:—					
28M/10288	AGS.2001/C/1	Nut, 2 BA ... ..	3	—		C	
1468	EEAS.1/2C	Screw, 2 BA ... ..	3	—		C	
28D/9419475	SP.15/C	Washer ... ..	3	—		C	

**MAIN PLANE  
WING STRUCTURE, STARBOARD**

Ref. No.	Part No.	Description	No. off	Mati. Spec.	Cl. of Equip.		Plate No.
					M.R.	L.M.	
		1 2 3 4 5 6					
	E.A3.20.2792	<b>SKIN, PANEL, BOTTOM OF MAIN SPAR ...</b>	—	—	—		
		Spares for:—					
4831	E.A1.20.189	Bracket, eyebolt ... ..	30	—		C	
3682	E.A1.20.5321	Eyebolt ... ..	30	—		C	
		Attaching parts for E.A1.20.5321:—					
16109	E.A1.20.5325	Bolt, special ... ..	1	—		C	
28M/10328	AGS.2002/C/1	Nut, 2 BA ... ..	1	—		C	
17849	E.A1.20.2081	<b>ROLLER, BRACKET, ASSEMBLY, BETWEEN RIBS 3 AND 4</b>	6	—		C	
		Consisting of:—					
28D/9453970	A25/1C	Bolt, 2 BA ... ..	1	—		C	
	E.A1.20.2083	Bracket ... ..	1	—		C	
40242	E.A1.20.2085	Bush, spacing ... ..	1	—		C	
28M/5808573	A27/CS	Nut, 2 BA ... ..	1	—		C	
28P/19227	SP.90/C6	Pin, split ... ..	1	—		C	
5023	E.A1.20.2087	Roller, Oilite ... ..	2	—		C	
	AS.2811/7/044	Tube, distance, x 17 SWG ... ..	1	T.4		LM	
25W/9419475	SP.15/C	Washer ... ..	1	—		C	
17850	E.A1.20.2213	<b>ROLLER, BRACKET, ASSEMBLY, BETWEEN RIBS 2 AND 3</b>					
		Consisting of:—					
28D/9453970	A25/15C	Bolt, 2 BA ... ..	1	—		C	
	E.A1.20.2215	Bracket ... ..	1	—		C	
40242	E.A1.20.2085	Bush, spacing ... ..	1	—		C	
28M/5805573	A27/CS	Nut, 2 BA ... ..	1	—		C	
28P/19227	SP.90/C6	Pin, split ... ..	1	—		C	
5023	E.A1.20.2087	Roller, Oilite ... ..	2	—		C	
	AS.2811/7/044	Tube, distance, x 17 SWG ... ..	1	T.4		LM	
28W/9419475	SP.15/C	Washer ... ..	1	—		C	
		Attaching parts for E.A1.20.2081 and E.A1.20.2213:—					
28M/10288	AGS.2001/C/1	Nut, 2 BA ... ..	3	—		C	
1468	EEAS.1/2C	Screw, 2 BA ... ..	3	S.96		C	
	E.A1.20.2089	Sleeve, joint, air brake torque tube ... ..	2	DTD.683		MR	
	E.A1.20.2201	Tube, assembly, inboard, air brake ... ..	1	—		MR	
	E.A1.20.2203	Tube, assembly, outboard, air brake ... ..	1	—		MR	
	E.A1.20.2205	Tube, assembly, centre, air brake ... ..	1	—		MR	
9477	E.A3.20.2239	Washer, special ... ..	6	Laminated Alumn.		C	
5120	E.A3.20.2365	Washer, special ... ..	1	L.40		C	

Pages ~~553~~ to 562 not issued  
555



**MAIN PLANE  
WING STRUCTURE, PORT AND STARBOARD**

Ref. No.	Part No.	Description					No. off	Matl. Spec.	Cl. of St.	Plate and Illust'n No.
		1	2	3	4	5			M.R.	
<b>SUMMARY OF STOCK ITEMS USED ON WING STRUCTURE, PORT AND STARBOARD, ASSEMBLY</b>										
28D/12512	A.25/1C	Bolt,	2	BA,	hex. head,	.55	long	...	...	C
28D/12814	A.25/29E	Bolt,	$\frac{1}{4}$ "	BSF,	hex. head,	3."4	long	...	...	C
28D/13062	A.25/33E	Bolt,	$\frac{1}{4}$ "	BSF,	hex. head,	3."75	long	...	...	C
28D/12528	A.25/1B	Bolt,	4	BA,	hex. head,	.5	long	...	...	C
28D/12513	A.25/2C	Bolt,	2	BA,	hex. head,	.65	long	...	...	C
28D/12531	A.25/3C	Bolt,	2	BA,	hex. head,	.75	long	...	...	C
28D/12532	A.25/4C	Bolt,	2	BA,	hex. head,	.85	long	...	...	C
28D/12533	A.25/5C	Bolt,	2	BA,	hex. head,	.95	long	...	...	C
28D/12514	A.25/7C	Bolt,	2	BA,	hex head,	1."15	long	...	...	C
28D/12534	A.25/9C	Bolt,	2	BA,	hex head,	1."35	long	...	...	C
28D/12542	A.25/5E	Bolt,	2	BA,	hex. head,	1."00	long	...	...	C
28D/12543	A.25/6E	Bolt,	2	BA,	hex. head,	1."10	long	...	...	C
28D/12544	A.25/8E	Bolt,	$\frac{1}{4}$ "	BSF,	hex. head,	1."3	long	...	...	C
28D/12815	A.25/3G	Bolt,	$\frac{1}{16}$ "	BSF,	hex. head,	.85	long	...	...	C
28D/12787	A.25/5G	Bolt,	$\frac{5}{16}$ "	BSF,	hex. head,	1."05	long	...	...	C
28D/12639	A.25/6G	Bolt,	$\frac{1}{8}$ "	BSF,	hex. head,	1."15	long	...	...	C
28D/12816	A.25/7G	Bolt,	$\frac{5}{16}$ "	BSF,	hex. head,	1."25	long	...	...	C
28D/12817	A.25/8G	Bolt,	$\frac{5}{16}$ "	BSF,	hex. head,	1."35	long	...	...	C
28D/12818	A.25/9G	Bolt,	$\frac{5}{16}$ "	BSF,	hex. head,	1."45	long	...	...	C
28D/12552	A.25/15G	Bolt,	$\frac{5}{16}$ "	BSF,	hex. head,	2."05	long	...	...	C
28D/	A.25/32G	Bolt,	$\frac{5}{16}$ "	BSF,	hex. head,	3."75	long	...	...	C
28D/12824	A.25/4J	Bolt,	$\frac{3}{8}$ "	BSF,	hex. head,	1."05	long	...	...	C
28D/12553	A.25/6J	Bolt,	$\frac{1}{4}$ "	BSF,	hex. head,	1."25	long	...	...	C
28D/12642	A.25/7J	Bolt,	$\frac{3}{8}$ "	BSF,	hex. head,	1."35	long	...	...	C
28D/13048	A.25/10J	Bolt,	$\frac{3}{8}$ "	BSF,	hex. head,	1."65	long	...	...	C
28D/12892	A.25/11J	Bolt,	$\frac{3}{8}$ "	BSF,	hex. head,	1."75	long	...	...	C

**MAIN PLANE  
WING STRUCTURE, PORT AND STARBOARD**

Ref. No.	Part No.						Description	No. off	Matl. Spec.	C. of St.	Place and Illust'n No.
		1	2	3	4	5				M.R.	
28D/12554	A.25/15J						<b>Bolt,</b> $\frac{3}{8}$ " BSF, hex. head, 2."15 long	...	...	C	
28D/	A.25/48L						<b>Bolt,</b> $\frac{1}{8}$ " BSF, hex. head, 5.5 long	...	...	C	
28D/	A.25/53L						<b>Bolt,</b> $\frac{1}{16}$ " BSF, hex. head, 6."0 long	...	...	C	
28D/13053	A.25/9N						<b>Bolt,</b> $\frac{1}{8}$ " BSF, hex. head, 1."7 long	...	...	C	
28D/12627	A.25/11P						<b>Bolt,</b> $\frac{9}{16}$ " BSF, hex. head, 1."95 long	...	...	C	
28D/13283	A.28/2C						<b>Bolt,</b> 2 BA, hex. head, ."65 long	...	...	C	
28D/8302	AS.1242/3B						<b>Bolt,</b> 4 BA, c'sk head, ."65 long	...	...	C	
28D/8307	AS.1242/2C						<b>Bolt,</b> 2 BA, c'sk head, ."6 long	...	...	C	
28D/8308	AS.1242/3C						<b>Bolt,</b> 2 BA, c'sk head, ."7 long	...	...	C	
28D/8309	AS.1242/4C						<b>Bolt,</b> 2 BA, c'sk head, ."8 long	...	...	C	
28D/8324	AS.1242/3E						<b>Bolt,</b> $\frac{1}{4}$ " BSF, c'sk head, ."75 long	...	...	C	
28D/8372	AS.1243/2B						<b>Bolt,</b> 4 BA, c'sk head, ."55 long	...	...	C	
28D/8343	AS.1248/4C						<b>Bolt,</b> 2 BA, mushroom head, ."8 long	...	...	C	
28D/11210	AS.1246/3C						<b>Bolt,</b> 2 BA, round head, ."7 long	...	...	C	
28D/12179	AGS.571/505						<b>Bolt,</b> $\frac{5}{16}$ " BSF	...	...	C	
<del>28D/12579</del>	<del>AGS.571/507</del>						<del><b>Bolt,</b> <math>\frac{1}{16}</math>" BSF</del>	...	...	<del>C</del>	
28D/12581	AGS.571/606						<b>Bolt,</b> $\frac{3}{8}$ " BSF	...	...	C	
28D/8112	AGS.571/607						<b>Bolt,</b> $\frac{3}{8}$ " BSF	...	...	C	
28D/12583	AGS.571/716						<b>Bolt,</b> $\frac{7}{16}$ " BSF	...	...	C	
28D/12584	AGS.571/808						<b>Bolt,</b> $\frac{1}{2}$ " BSF	...	...	C	
28L/13140	A.27/BT						<b>Nut,</b> 4 BA, thin	...	...	C	
28M/12929	A.27/CP						<b>Nut,</b> 2 BA, plain	...	...	C	
28M/13121	A.27/CS						<b>Nut,</b> 2 BA, slotted	...	...	C	
28L/13124	A.27/CT						<b>Nut,</b> 2 BA, thin	...	...	C	
28M/12928	A.27/EP						<b>Nut,</b> $\frac{1}{4}$ " BSF, plain	...	...	C	
28M/12930	A.27/ES						<b>Nut,</b> $\frac{1}{4}$ " BSF, slotted	...	...	C	
28L/12931	A.27/ET						<b>Nut,</b> $\frac{1}{4}$ " BSF, thin	...	...	C	

**MAIN PLANE  
WING STRUCTURE, PORT AND STARBOARD**

Ref. No.	Part No.	Description						No. off	Matl. Spec.	Cl. of Equip.	Plate No.
		1	2	3	4	5	6			M.R. L.M.	
28M/13375	A27/GP	Nut,	$\frac{3}{8}$ "	BSF,	plain	...	...	...	...	C	
28M/13295	A27/JP	Nut,	$\frac{3}{8}$ "	BSF,	plain	...	...	...	...	C	
28M/13123	A27/JS	Nut,	$\frac{3}{8}$ "	BSF,	slotted	...	...	...	...	C	
28M/13028	A27/JT	Nut,	$\frac{3}{8}$ "	BSF,	thin	...	...	...	...	C	
28M/13259	A27/NS	Nut,	$\frac{1}{2}$ "	BSF,	slotted	...	...	...	...	C	
28M/13410	A27/NT	Nut,	$\frac{1}{2}$ "	BSF,	thin	...	...	...	...	C	
28M/13587	A27/PP	Nut,	$\frac{3}{8}$ "	BSF,	plain	...	...	...	...	C	
28M/13588	A27/QP	Nut,	$\frac{3}{8}$ "	BSF,	plain	...	...	...	...	C	
28M/13589	A27/SP	Nut,	$\frac{3}{8}$ "	BSF,	plain	...	...	...	...	C	
28M/13451	A29/JS	Nut,	$\frac{3}{8}$ "	BSF,	slotted	...	...	...	...	C	
28M/7728	AGS.572/G	Nut,	$\frac{3}{8}$ "	BSF,	slotted	...	...	...	...	C	
28M/7820	AGS.572/H	Nut,	$\frac{1}{2}$ "	BSF,	slotted	...	...	...	...	C	
28M/10287	AGS.2001/B/1	Nut,	stiff,	4 BA	...	...	...	...	...	C	
28M/10288	AGS.2001/C/1	Nut,	stiff,	2 BA	...	...	...	...	...	C	
28M/10281	AGS.2001/C/3	Nut,	stiff,	2 BA	...	...	...	...	...	C	
28M/10291	AGS.2001/G/1	Nut,	stiff,	$\frac{3}{8}$ "	BSF	...	...	...	...	C	
28M/10328	AGS.2002/C/1	Nut,	stiff,	2 BA	...	...	...	...	...	C	
28M/10319	AGS.2002/C/3	Nut,	stiff,	2 BA	...	...	...	...	...	C	
28M/10330	AGS.2002/E/1	Nut,	stiff,	$\frac{1}{4}$ "	BSF	...	...	...	...	C	
28M/10320	AGS.2002/E/3	Nut,	stiff,	$\frac{1}{4}$ "	BSF	...	...	...	...	C	
28M/10331	AGS.2002/G/1	Nut,	stiff,	$\frac{3}{8}$ "	BSF	...	...	...	...	C	
28M/10332	AGS.2002/J/1	Nut,	stiff,	$\frac{1}{8}$ "	BSF	...	...	...	...	C	
28M/10333	AGS.2002/L/1	Nut,	stiff,	$\frac{7}{16}$ "	BSF	...	...	...	...	C	
28M/11957	AGS.2007/C/1	Nut,	stiff,	2 BA	...	...	...	...	...	C	
28M/9435562	AGS.2007/J/1	Nut,	stiff,	$\frac{3}{8}$ "	BSF	...	...	...	...	C	
28M/9419400	AGS.2013/C/11	Nut,	floating	anchor,	2 BA	...	...	...	...	C	
28P/12431	SP.9/C6	Pin,	split,	$\frac{3}{16}$ "	dia. x $\frac{3}{4}$ "	long	...	...	...	C	
28P/9429528	SP.9/C8	Pin,	split,	$\frac{3}{16}$ "	dia. x 1"	long	...	...	...	C	
28P/12792	SP.9/E4	Pin,	split,	$\frac{3}{32}$ "	dia. x $\frac{1}{2}$ "	long	...	...	...	C	
28P/12793	SP.9/E12	Pin,	split,	$\frac{3}{32}$ "	dia. x $1\frac{1}{2}$ "	long	...	...	...	C	
28P/13330	SP.9/E16	Pin,	split,	$\frac{3}{32}$ "	dia. x 2"	long	...	...	...	C	
28P/12364	SP.9/G6	Pin,	split,	$\frac{1}{8}$ "	dia. x $\frac{1}{4}$ "	long	...	...	...	C	
28P/9429653	SP.9/G12	Pin,	split,	$\frac{1}{8}$ "	dia. x $1\frac{1}{2}$ "	long	...	...	...	C	
28P/1262	AGS.213/24	Pin,	taper,	$\frac{3}{16}$ "	dia. x $1\frac{1}{2}$ "	long	...	...	...	C	
28P/12527	SP.9/C10	Pin,	split,	$\frac{3}{16}$ "	dia. x $1\frac{1}{4}$ "	long	...	...	...	C	
28P/9429652	SP.9/E10	Pin,	split,	$\frac{3}{32}$ "	dia. x $1\frac{1}{4}$ "	long	...	...	...	C	
28W/9419402	SP.13/C	Washer,	2 BA,	plain	...	...	...	...	...	C	
28W/9419466	SP.13/J	Washer,	$\frac{1}{8}$ "	BSF,	plain	...	...	...	...	C	
28W/12298	SP.18/E	Washer,	$\frac{1}{8}$ "	BSF,	plain	...	...	...	...	C	
28W/9419474	SP.15/B	Washer,	4 BA,	plain	...	...	...	...	...	C	
28W/9419475	SP.15/C	Washer,	2 BA,	plain	...	...	...	...	...	C	
28W/9419405	SP.15/E	Washer,	$\frac{1}{8}$ "	BSF,	plain	...	...	...	...	C	
28W/9419476	SP.15/G	Washer,	$\frac{3}{16}$ "	BSF,	plain	...	...	...	...	C	
28W/9419477	SP.15/J	Washer,	$\frac{3}{8}$ "	BSF,	plain	...	...	...	...	C	
28W/9419478	SP.15/L	Washer,	$\frac{7}{16}$ "	BSF,	plain	...	...	...	...	C	
28W/9419479	SP.15/N	Washer,	$\frac{1}{2}$ "	BSF,	plain	...	...	...	...	C	
28W/9419480	SP.15/P	Washer,	$\frac{3}{8}$ "	BSF,	plain	...	...	...	...	C	
28W/9419481	SP.15/Q	Washer,	$\frac{3}{8}$ "	BSF,	plain	...	...	...	...	C	
28W/9419487	SP.16/E	Washer,	$\frac{1}{8}$ "	BSF,	plain	...	...	...	...	C	
28W/9419488	SP.16/G	Washer,	$\frac{3}{16}$ "	BSF,	plain	...	...	...	...	C	
28W/9419489	SP.16/J	Washer,	$\frac{3}{8}$ "	BSF,	plain	...	...	...	...	C	
28W/9419490	SP.16/L	Washer,	$\frac{7}{16}$ "	BSF,	plain	...	...	...	...	C	
28W/9419491	SP.16/N	Washer,	$\frac{3}{4}$ "	BSF,	plain	...	...	...	...	C	
28W/9419494	SP.16/S	Washer,	$\frac{1}{2}$ "	BSF,	plain	...	...	...	...	C	

Ref. No.	Part No.							No. off	Matl. Spec.	Cl. of Equip.	Plate No.
		1	2	3	4	5	6			M.R. L.M.	

CANBERRA P.R. MK.3

Page 567

**MAIN PLANE  
WING TIP, PORT**

Ref. No.	Part No.	Description					No. off	Matl. Spec.	Cl. of St. M.R.	Plate and Illust'n No.
		1	2	3	4	5				
2979	E.A1.00.67	<b>WING TIP, PORT, ASSEMBLY</b>					1	—	A	
		(Supplied to Pt. No. E.A3.00.143 for spares purposes, trimmed and drilled on datum face attaching to Wing extension—other faces untrimmed and with pilot holes)								
		Spares for :—								
	E.A1.81.19	<b>EQUIPMENT, ELECTRICAL, ASSEMBLY</b>					—	—	—	
		Spares for :—								
	E.A1.81.125	<b>LAMP, NAVIGATION, GROUP ...</b>					1	—	—	
		Consisting of :—								
	E.A1.81.127	<b>Bracket, assembly ...</b>					1	—	—	
3038 SE/2108	→	<b>Cable, Dwin 4 Wipien 6 ...</b>					QR	—	C	
SL/X952431	→	<b>Filament, 28v. 24w. ...</b>					1	—	A	
5CX/887	→	<b>Lamp, type B ...</b>					1	—	A	
28M/10326	AGS.2002/A/1	<b>Nut, stiff, 6 BA, "Oddie" ...</b>					4	—	C	
5K/2577	→	<b>Sleeve, 2" x 3/4" ...</b>					2	—	C	
5K/2576	→	<b>Sleeve, 1" x 1/2" ...</b>					2	—	C	
3510	EEAS.28/20ER	<b>Washer, special ...</b>					2	DTD.390	C	
	E.A1.57.257	<b>PIPES, FUEL AND AIR DELIVERY, ASSEMBLY</b>					—	—	—	
		Spares for :—								
1145	E.A1.57.317	<b>Clip, special, pipe ...</b>					1	DTD.390	C	
1399	E.A1.57.343	<b>Clip, special, pipe ...</b>					1	DTD.390	C	
1400	E.A1.57.345	<b>Clip, special, pipe ...</b>					1	DTD.390	C	
1401	E.A1.57.265	<b>Elbow, fuel pipe ...</b>					1	DTD.625	C	
2112	E.A1.57.1243	<b>Elbow, fuel pipe ...</b>					1	DTD.625	C	
	EEAS.77/33	<b>Hose, rubber, 1/8" i/d x 3/8" o/d x 2" long, type 1 (Make from 32C/408)</b>					2	DTD.625	—	
	EEAS.77/81	<b>Hose, rubber, 1 1/4" i/d x 1 5/8" o/d x 3" long, type 1 (Make from 32C/377)</b>					2	DTD.625	—	

**MAIN PLANE  
WING TIP, PORT**

Ref. No.	Part No.	Description					No. off	Matl. Spec.	Cl. of St.	Plate and Illust'n No.
		1	2	3	4	5			M.R.	
1403	E.A1.57.257A	<b>Pipe</b> , fuel delivery, from drop tank to wing tip joint					1	DTD.310	C	
1404	E.A1.57.257B	<b>Pipe</b> , fuel delivery, from wing tip joint to main plane					1	DTD.310	C	
1405	E.A1.57.257C	<b>Pipe</b> , fuel delivery, from drop tank to wing tip joint					1	DTD.310	C	
1406	E.A1.57.257D	<b>Pipe</b> , fuel delivery, from wing tip joint to main plane					1	DTD.310	C	
2170	E.A1.57.1245	<b>Ring</b> , clamping, .75 i.d. ... ..					1	DTD.610	C	
1446	EEAS.66/5	<b>Ring</b> , clamping, 1½" dia. ... ..					6	DTD.610	C	
	E.A1.20.1953	<b>STRUCTURE, WING TIP, ASSEMBLY</b>					—	—	—	
		Spares for :—								
4780	E.A3.20.2443	<b>Plate</b> , blanking, explosive bolt holes ...					1	DTD.683	C	
3639	E.A1.20.2471	<b>Plate</b> , locking, explosive bolt holes ...					1	—	C	
1025	EEAS.1/1C	<b>Screw</b> , 2 BA, c'sk head 120° ... ..					8	S96	C	
	E.A3.20.1023	<b>WING TIP, CENTRE, ASSEMBLY</b>					—	—	—	
		Spares for :—								
3643	E.A3.20.1061	<b>Panel</b> , access, explosive bolt ... ..					1	—	C	
3407	E.A1.20.2399	<b>Panel</b> , removable, fuel and air pipe access					1	—	C	
4440	E.A1.20.2395	<b>Panel</b> , top access ... ..					1	—	C	
1025	EEAS.1/1C	<b>Screw</b> , 2 BA, c'sk head 120° ... ..					10	S96	C	
	E.A1.20.2433	<b>WING TIP, FORWARD, ASSEMBLY</b>					—	—	—	
		Spares for :—								
3568	E.A1.20.9151	<b>Cover</b> , navigation light ... ..					1	DTD.846	C	

**Pages 569 to 574 not issued**



CANBERRA P.R. MK.3

Page 575

**MAIN PLANE  
WING TIP, STARBOARD**

Ref. No.	Part No.	Description					No. off	Matl. Spec.	Cl. of	Plate and Illust'n No.
		1	2	3	4	5			St. M.R.	
2980	E.A1.00.68	<b>WING TIP, STARBOARD, ASSEMBLY</b> (Supplied to Pt. No. E.A3.00.144 for spares purposes, trimmed and drilled on datum face mating with wing extension—other faces untrimmed and with pilot holes) Spares for :—					1	—	A	
	E.A1.81.20	<b>EQUIPMENT, ELECTRICAL, ASSEMBLY</b> Spares for :—					—	—	—	
	E.A1.81.126	<b>LAMP, NAVIGATION, GROUP</b> Consisting of :—					1	—	—	
	E.A1.81.127	Bracket, assembly ... ..					1	—	—	
	<sup>3038</sup> <del>5E/2408</del> →	Cable, Davin → <i>Vinplex 6</i> ... ..					QR	—	C	
5L/X950431	→	Filament, 28v. 24w. ... ..					1	—	A	
5CX/889	→	Lamp, type B ... ..					1	—	A	
28M/10326	AGS.2002/A/1	Nut, stiff, 6 BA, "Oddie" ... ..					4	—	—	
5K/2577	→	Sleeve, 2" x 3/4" ... ..					2	—	C	
5K/2576	→	Sleeve, 1" x 1/2" ... ..					2	—	C	
3510	EEAS.28/20ER	Washer, special ... ..					2	DTD.390	C	
	E.A1.57.258	<b>PIPES, FUEL AND AIR DELIVERY, ASSEMBLY</b> Spares for :—					—	—	—	
1145	E.A1.57.317	Clip, special, pipe ... ..					1	DTD.390	C	
1399	E.A1.57.343	Clip, special, pipe ... ..					1	DTD.390	C	
1400	E.A1.57.345	Clip, special, pipe ... ..					1	DTD.390	C	
1401	E.A1.57.265	Elbow, fuel, pipe ... ..					1	DTD.625	C	
2112	E.A1.57.1243	Elbow, fuel pipe ... ..					1	DTD.625	C	
	EEAS.77/33	Hose, rubber, 1/2" i/d x 3/4" o/d x 2" long, type 1 (Make from 32C/408)					2	DTD.625	—	
	EEAS.77/81	Hose, rubber, 1 1/4" i/d x 1 5/8" o/d x 3" long, type 1 (Make from 32C/377)					2	DTD.625	—	
1407	E.A1.57.258A	Pipe, fuel delivery, from drop tank to wing tip joint					1	DTD.310	C	

**MAIN PLANE  
WING TIP, STARBOARD**

Ref. No.	Part No.	Description					No. off	Matl. Spec.	Cl. of	Place and Illust'n No.
		1	2	3	4	5			St. M.R.	
1404	E.A1.57.257B	<b>Pipe</b> , fuel delivery, from wing tip joint to main plane					1	DTD.310	C	
1405	E.A1.57.257C	<b>Pipe</b> , fuel delivery, from drop tank to wing tip joint					1	DTD.310	C	
1406	E.A1.57.257D	<b>Pipe</b> , fuel delivery, from wing tip joint to main plane					1	DTD.310	C	
2170	E.A1.57.1245	<b>Ring</b> , clamping, .75 l/d ... ..					1	DTD.610	C	
1446	EEAS.66/5	<b>Ring</b> , clamping, 1 1/8" dia. ... ..					6	DTD.610	C	
	E.A1.20.1954	<b>STRUCTURE, WING TIP, ASSEMBLY</b> Spares for :—					—	—	—	
4780	E.A3.20.2443	<b>Plate</b> , blanking, explosive bolt holes ... ..					1	DTD.683	C	
3639	E.A1.20.2471	<b>Plate</b> , locking, explosive bolt holes ... ..					1	—	C	
1025	EEAS.1/1C	<b>Screw</b> , 2 BA, c'sk head 120° ... ..					10	S96	C	
21203	E.A3.20.1024	<b>WING TIP, CENTRE, ASSEMBLY</b> Spares for :—					—	—	B/A	
3643	E.A3.20.1061	<b>Panel</b> , access, explosive bolt ... ..					1	—	C	
3408	E.A1.20.2400	<b>Panel</b> , removable, fuel and air pipe access					—	—	C	
4441	E.A1.20.2396	<b>Panel</b> , top access ... ..					1	—	C	
1025	EEAS.1/1C	<b>Screw</b> , 2 BA, c'sk head ... ..					8	S96	C	
22244	E.A1.20.2434	<b>WING TIP, FORWARD, ASSEMBLY</b> Spares for :—					—	—	B	
3568	E.A1.20.9151	<b>Cover</b> , navigation light ... ..					1	DTD.846	C	

**Pages 577 to 580 not issued**



**MAIN PLANE  
WING TIP, PORT AND STARBOARD**

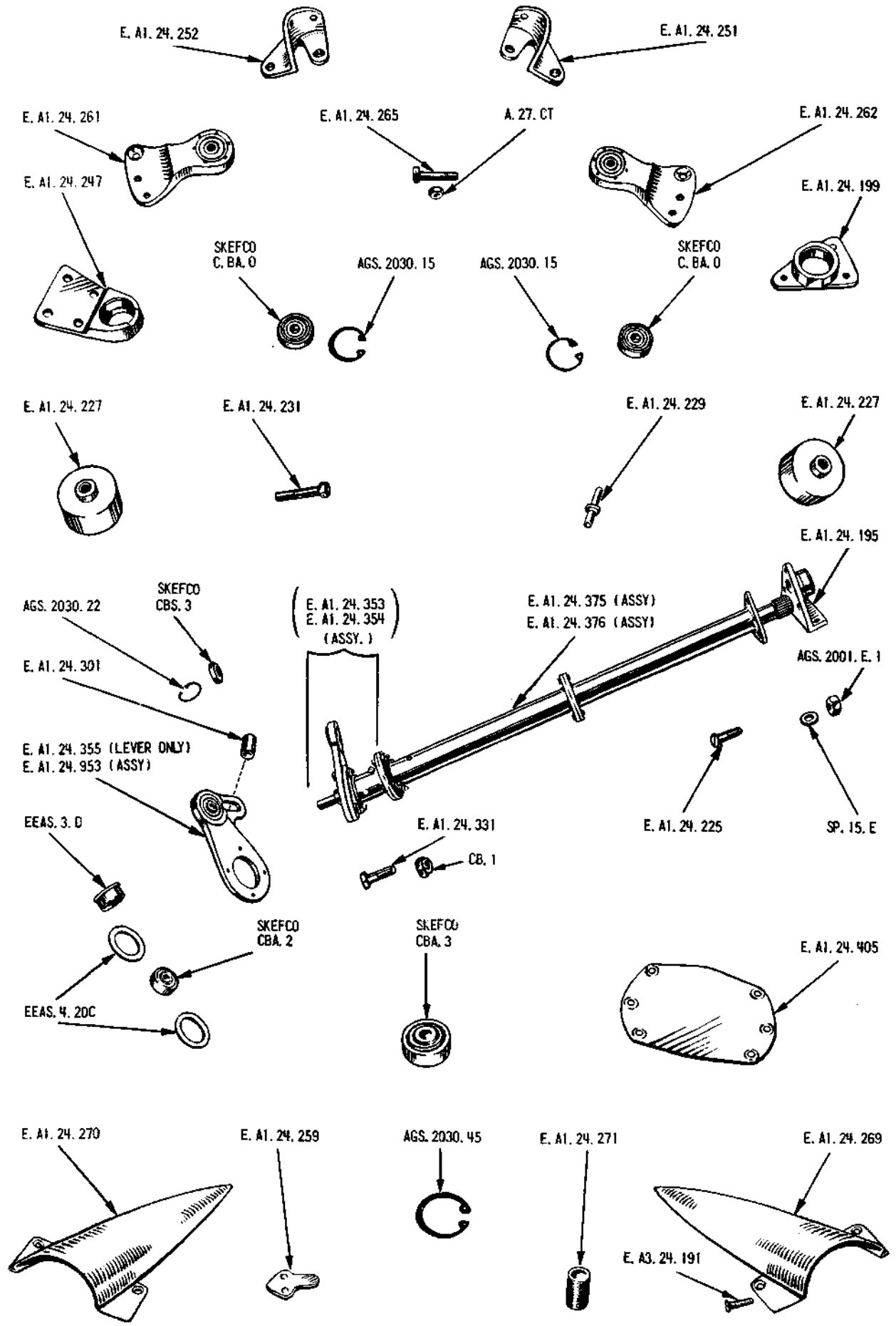
Ref. No	Part No.	Description	No. off	Matl. Spec.	Cl. of Equip.		Plate No.
					M.R.	L.M.	
<b>SUMMARY OF STOCK ITEMS USED ON WING TIP, PORT AND STARBOARD, ASSEMBLY</b>							
		1 2 3 4 5 6					
28D/12511	A25/2B	Bolt, 4 BA, hex. head, "6 long ... ..				C	
28D/12513	A25/2C	Bolt, 2 BA, hex. head, "6 long ... ..				C	
28D/13284	A28/3C	Bolt, 2 BA, hex. head, "75 long ... ..				C	
28M/9403518	A27/AP	Nut, 6 BA, plain ... ..				C	
28M/10326	AGS.2002/A/1	Nut, 6 BA, ... ..				C	
28M/10330	AGS.2002/E/1	Nut, 1/4" BSF ... ..				C	
28M/10287	AGS.2001/B/1	Nut, stiff, 4 BA ... ..				C	
28M/10280	AGS.2001/B/3	Nut, stiff, 4 BA ... ..				C	
28M/10281	AGS.2001/C/3	Nut, stiff, 2 BA ... ..				C	
28M/9435560	AGS.2007/E/1	Nut, stiff, 1/4" BSF ... ..				C	
28S/2766	A31/C16	Screw, 2 BA, cheese head, 1/2" long ... ..				C	
28S/1200062	A33/A20	Screw, 6 BA, c'sk. head, 3/8" long ... ..				C	
28S/6350	A40/B17	Screw, 4 BA, round head, 3/8" long ... ..				C	
28W/3096	AGS.162/A	Washer, 6 BA, spring ... ..				C	
28W/9419474	SP.15/B	Washer, 4 BA, plain ... ..				C	
28W/9419475	SP.15/C	Washer, 2 BA, plain ... ..				C	
28W/9419405	SP.15/E	Washer, 1/4" BSF, plain ... ..				C	

Restricted

Ref. No.	Part No.	1 2 3 4 5 6						No. off	Matl. Spec.	Cl. of Equip.	Plate No.
		Description								M.R.	

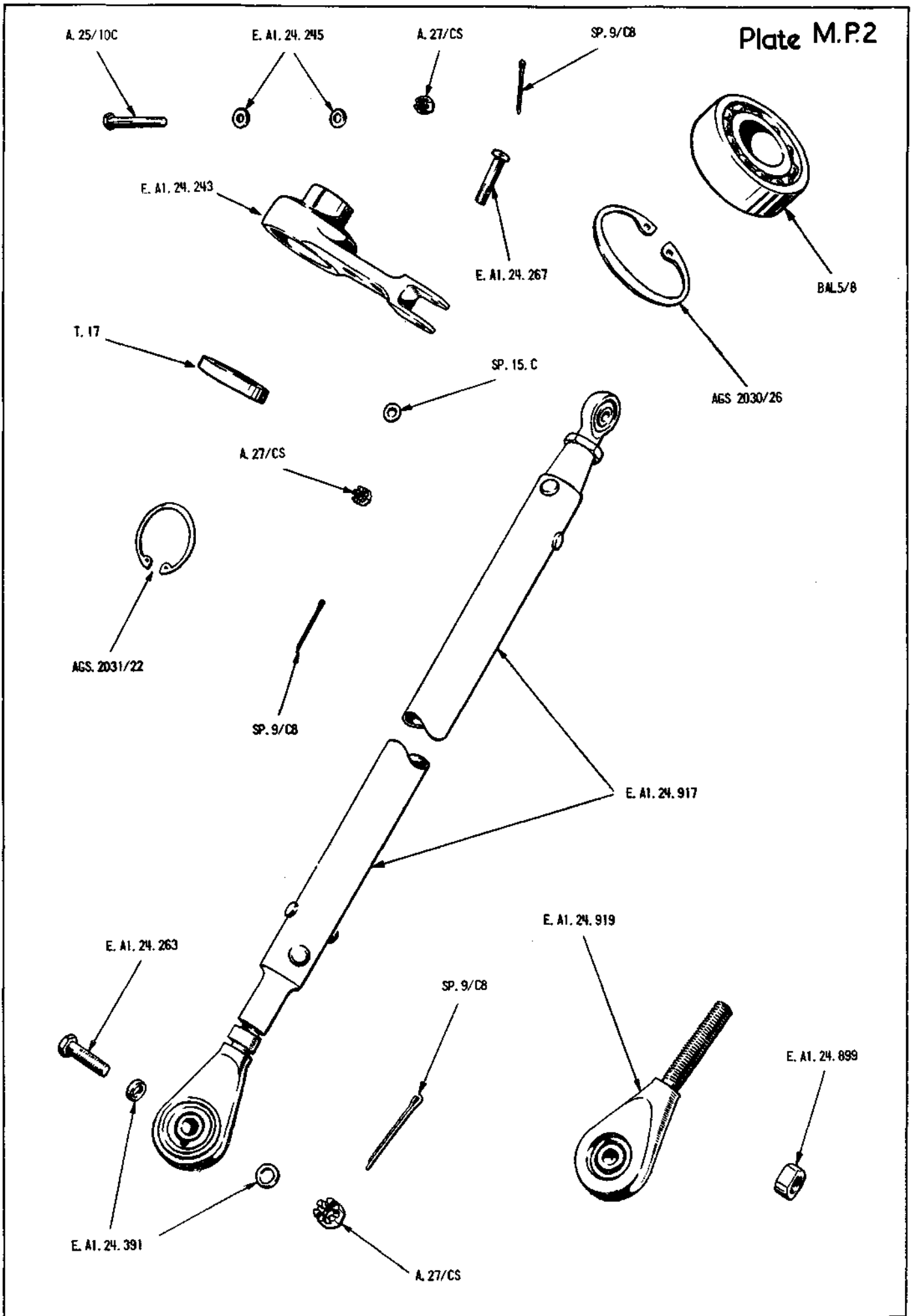
Restricted

# Plate M.P.1



MAIN PLANE EQUIPMENT





MAIN PLANE - TAB PUSH ROD AND LEVER



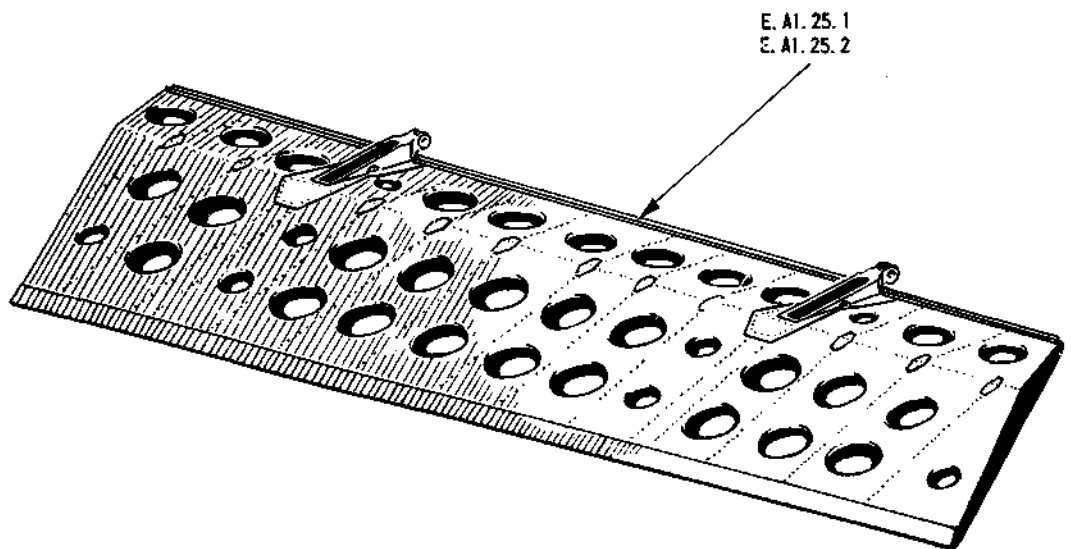
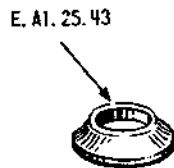
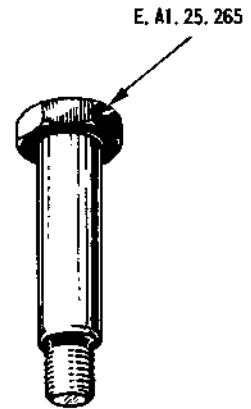
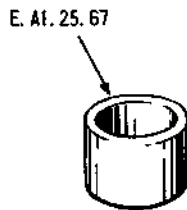
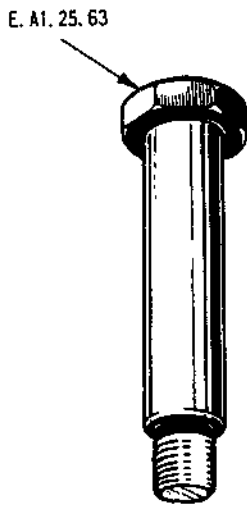
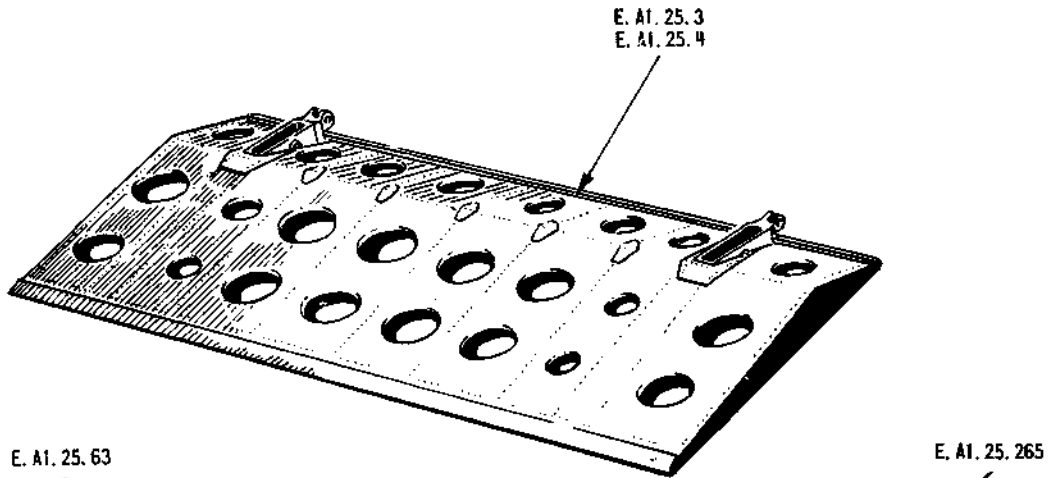
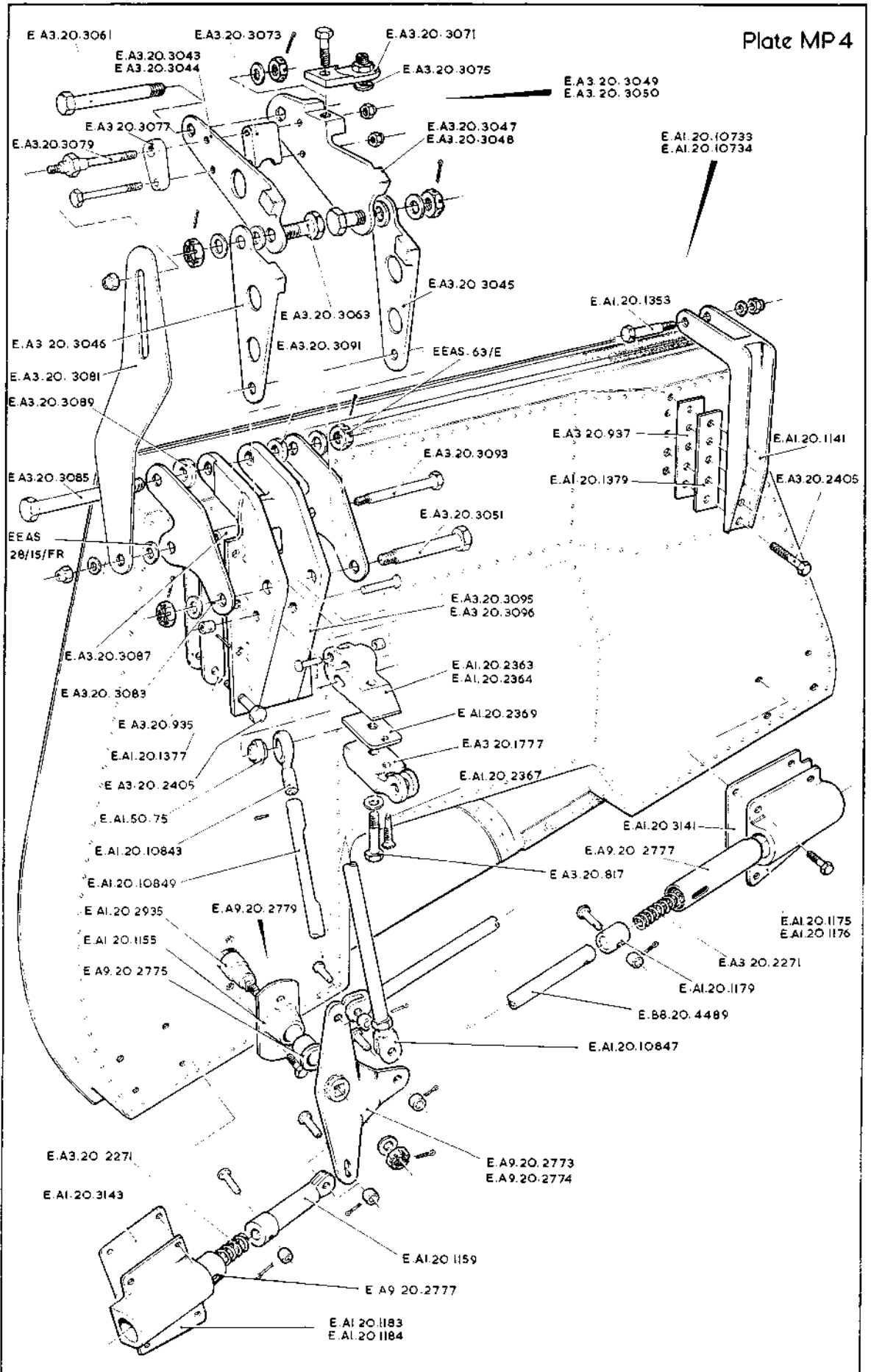




Plate MP 4



MAIN PLANE-UNDERCARRIAGE DOOR

RESTRICTED



This file was downloaded  
from the RTFM Library.  
Link: [www.scottbouch.com/rtfm](http://www.scottbouch.com/rtfm)

Please see site for usage terms,  
and more aircraft documents.

