

**UNDERCARRIAGE  
MAIN UNDERCARRIAGE, PORT**

Ref. No	Part No.	Description	No. off	Mtl. Spec.	Cl. of Equip.	Plate No.
					M.R. L.M.	
	E.A1.40.1	<b>MAIN UNDERCARRIAGE, PORT, ASSEMBLY</b> ...	1	—	—	
		Consisting of:—				
1460	E.A3.40.5	<b>LEG, OLEO (LESS WHEEL, FIXED FAIRING AND BRAKE UNIT), GROUP</b>	1	—	A	U.1
		Consisting of:—				
27G/4069	DUNLOP AH.9597	<b>BRAKE</b> , unit (For spares see AP.4515C, Sect. 2, Chap. 37)	1	—	A	U.1
		Attaching parts for AH.9597:—				
2168	E.A6.40.35	Bolt ... ..	10	S.97	C	U.1
28M/13259	A27/NS	Nut, 1/2" BSF ... ..	10	—	C	U.1
2169	E.A3.40.43	Washer ... ..	10	DTD.124A	C	U.1
27A/2852	DUNLOP DR.4521 or FIRESTONE ZA.341 or GOODYEAR GA.1209	<b>COVER</b> , outer ... ..	1	—	B	U.1
3060	E.A3.20.853	<b>FAIRING, FIXED, GROUP</b> (Supplied with trim allowance)	1	—	B	U.1
		Spares for:—				
21164	E.A3.20.2869	<b>PANEL, HINGE, ASSEMBLY</b> ... ..	1	—	B	
		Spares for:—				
3025	E.A1.20.1679	<b>HINGE</b> (Make from 28N/10263) ... ..	1	—	LM	
520	E.A1.20.1675	<b>PANEL</b> , hinge, 16 SWG ... ..	1	L.72	C	
	E.A1.40.435	<b>SPRING</b> ... ..	2	—	C	
1413	E.A1.20.6817	<b>PANEL</b> , access, picket point ... ..	1	—	C	U.1
	E.A3.20.1627	<b>SEAL</b> , 3/8" dia. x 90" long (Make from Ref. 4432)	1	Synthetic Rubber	LM	U.1
		Attaching parts for E.A3.20.853:—				
4174	E.A1.40.519	Bolt, securing, fixed fairing mounting brackets to leg (Made from A25/5G)	8	—	C	
28W/3100	AGS.162/E	Washer, 1/2" BSF ... ..	8	—	C	
42537	E.A3.40.233	<b>LEG, SLIDING AND OLEO HEAD, GROUP (MOD. 4270)</b>	1	—	A	
		Spares for:—				
661	E.A1.40.153	<b>BUSH</b> , bearing, torque link, centre joint ...	4	DTD.412	C	U.2
	E.A3.40.231	<b>HEAD, OLEO, GROUP (MOD. 4270)</b> ... ..	1	—	—	
		Spares for:—				
663	E.A1.40.89	<b>BEARING</b> , spherical seated, ball joint side stay	1	S.11	C	U.2
		Attaching parts for E.A1.40.89:—				
664	E.A1.40.101	Bush, bearing ... ..	1	DTD.1412	C	U.2
674	E.A1.40.95	Ring, lower, retaining, ball joint ... ..	1	DTD.124	C	U.2
676	E.A1.40.97	Ring, upper, retaining, ball joint ... ..	1	DTD.124	C	U.2
680	E.A1.40.99	Stud, retaining rings ... ..	12	S.11	C	U.2
	E.A9.40.63	<b>BUSH</b> , pivot (Mod. 4270) ... ..	2	—	C	
666	E.A1.40.111	<b>BUSH</b> , torque link lug ... ..	2	DTD.412	C	U.2
		Attaching parts for E.A1.40.111:—				
673	E.A1.40.679	Plug, bearing bush, retaining ... ..	1	L.40	C	U.2
667	E.A1.40.133	<b>DISC</b> , sealing, piston dowel plug ... ..	2	L.40	C	U.2
		Attaching parts for E.A1.40.133:—				
679	E.A1.40.625	Screw, retaining plug dowel seal ... ..	1	L.40	C	U.2

**UNDERCARRIAGE  
MAIN UNDERCARRIAGE, PORT**

Ref. No	Part No.	Description	No. off	Matl. Spec.	Cl. of Equip.		Plate No.
					M.R.	L.M.	
		1 2 3 4 5 6					
668	E.A1.40.131	DOWEL, piston ... ..	2	S.11	C		U.2
42058	E.A9.40.55	HEAD, oleo, forging (Mod. 4270) ... ..	1	DTD.5094	A/MR		
669	E.A1.40.103	HOOK, "S" shaped, 16 SWG ... ..	2	M.S. Wire	C		U.2
20656	E.A1.40.127	PIPE, stack, assembly ... ..	1	—	B/MR		U.2
28F/8014021	AGS.1138/B	Attaching parts for E.A1.40.127:— Washer, jointing ... ..	1	Alumn.	C		
	E.A1.40.17	PISTON, OPERATING, GROUP ... ..	1	—	—		U.2
		Consisting of:—					
1099	EEAS.37/22A	NIPPLE, 2 BA ... ..	2	S.11	C		U.2
670	E.A1.40.647	PISTON ... ..	1	DTD.197	C		U.2
671	E.A1.40.649	PLATE, orifice enclosure, control ... ..	1	S.11	C		U.2
		Attaching parts for E.A1.40.649:—					
683	E.A1.40.61	Bolt, orifice plate ... ..	3	S.11	C		U.2
672	E.A1.40.651	Ring, piston ... ..	1	—	C		U.2
	EEAS.38/3A	SPOKE, 2 BA (Make from 28R/6328) ... ..	1	S.11	LM		U.2
22227	E.A1.40.117	STRUT, piston, main ... ..	1	T.4	C		U.2
678	E.A1.40.155	RING, sealing at dowel ... ..	2	Synthetic Rubber	C		U.2
	H. PRESSURE COMPS. LTD. GYP.A.58	VALVE, charging ... ..	1	—	C		U.2
		Attaching parts for GYP.A.58:—					
28D/1215078	AS.1246/5C	Bolt, 2 BA ... ..	1	—	C		
681	E.A1.40.105	Tube, distance ... ..	1	L.40	C		U.2
28W/1007983	AGS.162/C	Washer, 2 BA ... ..	1	—	C		
28F/8014021	AGS.1138/B	Washer, jointing ... ..	1	—	C		
682	E.A1.40.149	Washer, locking, valve, 14 SWG ... ..	1	DTD.124	C		U.2
	E.A3.40.235	LEG, SLIDING, COMPRESSION, GROUP (MOD. 4270) ... ..	1	—	—		U.2
		Consisting of:—					
26640	E.A3.40.201	BOLT, clamp, axle, locking (Mod. 2308) ... ..	1	S.95	C		
684	E.A1.40.161	BUSH, bearing, in lug ... ..	2	DTD.124	C		U.2
685	E.A1.40.627	BUSH, bearing (Pre-Mod. 271) ... ..	1	—	C		
2467	E.A3.40.45	BUSH, bearing (Mod. 271) ... ..	1	—	C		U.2
20865	E.A3.40.13	CLAMP, AXLE, GROUP ... ..	1	—	A/MR		U.2
		Spares for:—					
21355	E.A3.40.23	BUSH ... ..	1	L.16	C		U.2
1752	E.A3.40.17	CLAMP, axle body ... ..	1	—	C		U.2
1753	E.A3.40.19	LINK, towing ... ..	1	—	C		U.2
21537	E.A3.40.21	WASHER, tow link ... ..	1	—	C		U.2
14706	E.A3.40.209	HOUSING, seals (Mod. 2361) ... ..	1	L.65	C		
1462	E.A3.40.9	LEG, sliding, c/w integral axle ... ..	1	—	A		U.2
691	E.A1.40.41	NUT, stop ... ..	1	S.11	C		U.2
32210	E.A3.40.221	PIN, locking, piston ... ..	3	S.97	C		
	E.A3.40.219	PISTON, sliding leg ... ..	1	DTD.197	—		
693	E.A1.40.175	PLATE, orifice ... ..	1	S.65	C		U.2
		Attaching parts for E.A1.40.175:—					
683	E.A1.40.61	Bolt, stud ... ..	6	S.11	C		U.2
694	E.A1.40.655	PLUG, sealing (Pre-Mod. 2361) ... ..	1	DTD.683	C		
14701	E.A3.40.203	PLUG, sealing (Mod. 2361) ... ..	1	DTD.683	C		U.2

**UNDERCARRIAGE  
MAIN UNDERCARRIAGE, PORT**

Ref. No.	Part No.	Description	No. off	Matl. Spec.	Cl. of Equip.	Plate No.
					M.R. L.M.	
695	E.A1.40.677	PLUG, pivot, bearing bush, retaining ...	2	L.40	C	U.2
696	E.A1.40.37	RING, sealing, between distance rings (Pre-Mod. 2361)	2	Synthetic Rubber	C	
14703	E.A3.40.213	RING, sealing, seal housing ...	2	Soft Rubber	C	U.2
12915	E.A1.40.45	RING, retaining, felt washer, 12 SWG	1	S.3	C	U.2
28D/8300	AS.1242/1B	Attaching parts for E.A1.40.45:— Bolt, 4 BA ...	8	—	C	
697	E.A1.40.57	RING, piston ...	1	—	C	U.2
14705	E.A3.40.215	RING, backing (Mod. 2361) ...	2	Fabric CX.18	C	U.2
21221	E.A1.40.635	RING, distance, between bearing bush, sealing rings and distance ring (Pre-Mod. 271)	3	DTD.138	C	
21221	E.A1.40.635	RING, distance, between sealing rings and distance ring (with Mod. 271, Pre-Mod. 2361)	2	DTD.138	C	
21221	E.A1.40.635	RING, distance, between bearing bush and distance ring (with Mod. 2361, without Mod. 271)	1	DTD.138	C	
14700	E.A3.40.207	RING, distance, between sealing and backing rings (Mod. 2361)	1	L.64	C	U.2
12913	E.A1.40.657	RING, spacer, between fibre washer and ring distance (Pre-Mod. 2361) or sealing housing (with Mod. 2361)	1	DTD.683	C	U.2
21354	E.A1.40.659	RING, shock absorber stop ...	1	DTD.683	C	U.2
698	E.A1.40.661	RING, sealing on plug (Pre-Mod. 2361) ...	1	Synthetic Rubber	C	
14702	E.A3.40.205	RING, sealing, on plug (Mod. 2361) ...	1	Soft Rubber	C	U.2
14704	E.A3.40.211	RING, sealing, seal housing (Mod. 2361) ...	1	Soft Rubber	C	U.2
700	E.A1.40.167	SCREW, grub, stop nut locking ...	1	S.1	C	
701	E.A1.40.39	WASHER, fibre, under stop nut ...	1	BS.216	C	U.2
702	E.A1.40.43	WASHER, packing under ring retaining x 1/8" thick	1	Hard Felt	C	U.2
521	E.A1.40.467	<b>LEVER, COWL DOOR MECHANISM, GROUP</b> Spares for:—	1	—	C	U.2
522	E.A1.40.465	BUSH, bearing ...	2	L.40	C	U.2
	E.A1.40.529	LEVER, operating ...	1	—	—	U.2
4173	E.A1.40.517	Attaching parts for E.A1.40.467:— Bolt, securing (Made from A25/5E) ...	4	—	C	U.2
3631	E.A1.40.27	LINK, torque, top ...	1	DTD.683	C	U.2
28M/13590	A27/SS	Attaching parts for E.A1.40.27:— Nut, 3/4" BSF ...	1	—	C	
704	E.A1.40.69	Pin, bearing, top, torque link ...	1	S.11	C	U.2
1500	E.A3.40.27	Pin, bearing, torque link joint ...	1	S.97	C	U.2
708	E.A1.40.139	Screw, grub, locking, top bearing pin ...	1	M.S.	C	U.2
707	E.A1.40.77	Screw, retaining, bearing pin ...	1	S.11	C	U.2
709	E.A1.40.619	Shim, bearing, pin sleeve ...	1	L.A.	C	U.2
711	E.A1.40.73	Sleeve, bearing for torque link ...	1	S.11	C	U.2
718	E.A1.40.147	Washer, bearing, thrust ...	1	DTD.412	C	U.2
713	E.A1.40.75	Washer, bearing, thrust ...	1	DTD.412	C	U.2
714	E.A1.40.79	Washer, locking, bearing pin retaining screw, 16 SWG	1	M.S.	C	U.2
715	E.A1.40.83	Washer, spacing at torque link joint, between link bearings	1	S.11	C	U.2

**UNDERCARRIAGE  
MAIN UNDERCARRIAGE, PORT**

Ref. No.	Part No.	Description						No. off	Matl. Spec.	Cl. of Equip. M.R. L.M.	Plate No.
		1	2	3	4	5	6				
1514	E.A.3.40.29							1	S.96	C	U.2
1515	E.A.3.40.31							1	S.96	C	U.2
3632	E.A.1.40.28							1	DTD.683	C	U.2
28M/13590	A27/SS										
703	E.A.1.40.67							1	S.11	C	U.2
1500	E.A.3.40.27							1	S.97	C	U.2
708	E.A.1.40.139							1	M.S.	C	U.2
707	E.A.1.40.77							1	S.11	C	U.2
709	E.A.1.40.619							1	L.A.	C	U.2
710	E.A.1.40.71							1	S.11	C	U.2
713	E.A.1.40.75							1	DTD.412	C	U.2
718	E.A.1.40.147							1	DTD.412	C	U.2
714	E.A.1.40.79							1	M.S.	C	U.2
715	E.A.1.40.83							1	S.11	C	U.2
1514	E.A.3.40.29							1	S.96	C	U.2
1515	E.A.3.40.31							1	S.96	C	U.2
28N/9156370	SP.21							5	L.A.	C	
712	E.A.1.40.137							1	M.S.	C	U.2
28S/1200034	A31/B16							1	—	C	
28W/3097	AGS.162/B							1	—	C	
27A/2653	DUNLOP KJ.9							1	—	A	U.1
27A/2657	DUNLOP AH.9343							1	—	A	
27A/3635	DUNLOP AH.50439							1	—	A	U.1
523	E.A.1.40.29							1	—	A	
528	E.A.1.40.221							1	S.65 or S.81	C	U.3
529	E.A.1.40.239							1	S.65 or S.81	C	U.3
537	E.A.1.40.353							1	S.11	C	U.3
530	E.A.1.40.405							1	S.11	C	U.3
7112	E.A.1.40.229							1	S.11	C	U.3
28D/13715	A25/15L							1	—	C	
28D/1011310	A25/8L							2	—	C	
28M/9129449	A27/LS							3	—	C	
7114	E.A.1.40.403							1	L.40	C	U.3
28D/13196	A25/18L							1	—	C	
28M/9129449	A27/LS							1	—	C	

**UNDERCARRIAGE  
MAIN UNDERCARRIAGE, PORT**

Ref. No.	Part No.	Description						No. off	Matl. Spec.	Cl. of Equip. M.R. L.M.	Plate No.
		1	2	3	4	5	6				
531	E.A1.40.199	<b>LEVER UNDERCARRIAGE LOCK, GROUP</b> ...						1	—	C	U.3
		Consisting of:—									
532	E.A1.40.213	<b>BUSH</b> ...						1	DTD.197	C	U.3
	E.A1.40.201	<b>LEVER</b> ...						1	S.11	—	U.3
533	E.A1.40.200	<b>LEVER, UNDERCARRIAGE LOCK, GROUP</b> ...						1	—	C	U.3
		Consisting of:—									
532	E.A1.40.213	<b>BUSH</b> ...						1	DTD.197	C	U.3
	E.A1.40.202	<b>LEVER</b> ...						1	S.11	—	U.3
525	E.A1.40.195	Attaching parts for E.A1.40.199 and E.A1.40.200:—						1	S.65 or S.81	C	U.3
22176	E.A1.40.351	Bolt, hook ...						1	—	C	U.3
		Nut, slotted, for hook catch pin bolt (Made from A27/QS)						1	—	C	U.3
543	E.A1.40.219	Tube, distance, for undercarriage "Down" switch operating bracket						1	L.40	C	U.3
28W/9419481	SP.15/Q	Washer, $\frac{5}{8}$ " BSF ...						1	—	C	U.3
544	E.A1.40.291	Washer, tab, at undercarriage hook catch bolt, 20 SWG						1	S.3	C	U.3
547	E.A1.40.417	Washer, under tab and connecting bolts 24 SWG						1	L.72	C	U.3
13168	E.A3.40.191	<b>LEVER, UNDERCARRIAGE "DOWN" MICRO-SWITCH, OPERATING, ASSEMBLY (MOD. 2151)</b>						1	—	C	U.3
		Spares for:—									
179	E.A1.40.569	<b>SCREW</b> , tappet ...						1	S.11	C	U.3
6472	E.A1.40.225	<b>LINK, SIDE STAY, GROUP</b> ...						1	—	B/MR	U.3
		Spares for:—									
536	E.A1.40.227	<b>BUSH</b> , bearing ...						2	DTD.197	C	U.3
		Attaching parts for E.A1.40.225:—									
526	E.A1.40.197	Bolt, connecting stay and link ...						1	S.65 or S.81	C	U.3
12916	E.A1.40.347	Nut, slotted (Made from A27/WS) ...						1	—	C	U.3
538	E.A1.40.223	Plug, adaptor ...						1	L.40	C	U.3
546	E.A1.40.357	Washer, link and link stay connecting bolt, 18 SWG						1	S.3	C	U.3
	or										
37307	E.A1.40.765										
28N/9156370	SP.21	<b>NIPPLE</b> , lubricating, $\frac{1}{4}$ " BSF ...						3	—	C	U.3
26667	E.A3.40.193	<b>NUT</b> , slotted, for undercarriage operating jack bolt (Made from A27/JS) (Mod. 2151)						1	—	C	U.3
13184	E.A3.40.199	<b>PLATE</b> ...						1	DTD.124	C	U.3
539	E.A1.40.205	<b>ROLLER</b> , stop lever, assembly ...						1	—	C	U.3
		Attaching parts for E.A1.40.205:—									
527	E.A1.40.203	Bolt ...						1	S.11	C	U.3
	E.A1.40.349	Nut, slotted (Made from A27/JS) ...						1	—	—	U.3
7113	E.A1.40.233	<b>SLEEVE</b> , operating spring, for undercarriage lock stop						1	DTD.197	C	U.3
540	E.A1.40.237	<b>SPRING</b> , compression at lock stop ...						1	Spring Steel	C	U.3
	E.A1.40.31	<b>STAY</b> , side ...						1	DTD.683	—	U.3
541	E.A1.40.235	<b>STOP</b> , undercarriage lock ...						1	S.11	C	U.3
542	E.A1.40.217	<b>TUBE</b> , distance, undercarriage jack bolt, undercarriage "Down" switch						1	L.40	C	U.3
545	E.A1.40.355	<b>WASHER</b> , link and link stay connecting bolt ...						1	L.72	C	U.3

**UNDERCARRIAGE  
MAIN UNDERCARRIAGE, PORT**

Ref. No.	Part No.	1	2	3	4	5	6	Description	No. off	Matl. Spec.	Cl. of Equip.	Plate No.
											M.R.	
34172	E.A9.40.43							STAY, SIDE, UNDERCARRIAGE, GROUP (MOD. 3585) Spares for this group are identical to group Part. No. E.A1.40.29 on page 974 except for the following deletions and additions:— Delete:—	1	—	A	U.1
	E.A1.40.31							STAY, side	1	DTD.683	—	
	E.A9.40.39							Add:— STAY, side	1	DTD.5024	—	U.3

**Pages 977 to 986 not issued**



**UNDERCARRIAGE  
MAIN UNDERCARRIAGE, STARBOARD**

Ref. No.	Part No.	Description	No. off	Matl. Spec.	Cl. of Equip.		Plate No.
					M.R.	L.M.	
		1 2 3 4 5 6					
	E.A1.40.2	<b>MAIN, UNDERCARRIAGE, STARBOARD, ASSEMBLY</b>	1	—	—		
		Consisting of:—					
1461	E.A3.40.6	<b>LEG, OLEO, (LESS WHEEL FIXED FAIRING AND BRAKE UNIT), GROUP</b>	1	—	A		U.1
		Consisting of:—					
27G/2070	DUNLOP AH.9598	<b>BRAKE</b> unit (For spares see A.P.4515C, Sect. 2, Chap. 37)	1	—	A		U.1
		Attaching parts for AH.9598:—					
2168	E.A6.40.35	Bolt ... ..	10	S.97	C		U.1
28M/13259	A27/NS	Nut, 1/2" BSF ... ..	10	—	C		U.1
2169	E.A3.40.43	Washer ... ..	10	DTD.124A	C		U.1
27A/2852	DUNLOP DR.4521 or FIRESTONE ZA.341 or GOODYEAR GA.1209	<b>COVER</b> , outer ... ..	1	—	B		U.1
3061	E.A3.20.854	<b>FAIRING, FIXED, GROUP</b> (Supplied with trim allowance)	1	—	B		U.1
		Spares for:—					
21721	E.A3.20.2870	<b>PANEL, HINGE, ASSEMBLY</b> ... ..	1	—	B		
		Spares for:—					
3026	E.A1.20.1679	<b>HINGE</b> (Make from 28N/10363) ... ..	1	—	—		
1887	E.A1.20.1676	<b>PANEL</b> , hinge, 16 SWG ... ..	1	L.72	C		
1413	E.A1.20.436	<b>SPRING</b> ... ..	2	Spring Steel	C		
	E.A1.20.6817	<b>PANEL</b> , access picket point ... ..	1	—	C		U.1
	E.A3.20.1627	<b>SEAL</b> , 1/2" dia. x 90" long (Make from Ref. 4432)	1	Synthetic Rubber	—		U.1
		Attaching parts for E.A3.20.854:—					
4174	E.A1.50.519	Bolt, securing, fixed fairing, mounting bracket to leg (Made from A25/SG)	8	—	C		
28W/3100	AGS.162/E	Washer, 1/2" BSF ... ..	8	—	C		
42538	E.A3.40.234	<b>LEG, SLIDING AND OLEO HEAD, GROUP (MOD. 4270)</b>	1	—	A		
		Spares for:—					
660	E.A1.40.639	<b>BRACKET</b> , angle, micro switch mounting ...	1	L.72	C		U.1
		Attaching parts for E.A1.40.639:—					
28D/9140638	A25/4B	Bolt, 4 BA ... ..	4	—	C		
28M/9403519	A27/BP	Nut, 4 BA ... ..	4	—	C		
706	E.A1.40.335	Plate, packing ... ..	1	L.A.	C		U.1
28W/3097	AGS.162/B	Washer, 4 BA ... ..	4	—	C		
661	E.A1.40.153	<b>BUSH</b> , bearing, torque link, centre joint ...	4	DTD.412	C		U.2

**UNDERCARRIAGE  
MAIN UNDERCARRIAGE, STARBOARD**

Ref. No	Part No.	Description						No. off	Matl. Spec.	Cl. of Equip.		Plate No.
		1	2	3	4	5	6			M.R.	L.M.	
662	E.A1.40.671	<b>FINGER</b> operating micro switch plunger ...						1	—	C		U.1
28S/9435713 28W/3097	A31/C20	Attaching parts for E.A1.40.671:— Screw, 2 BA ... ..						2	—	C		
	AGS.162/B	Washer ... ..						2	—	C		
	E.A3.40.232	<b>HEAD, OLEO, GROUP (MOD. 4270)</b> ...						1	—	—		
		Spares for:—										
663	E.A1.40.89	<b>BEARING</b> , spherical sealed ball joint side stay						1	S.11	C		U.2
		Attaching parts for E.A1.40.89:—										
664	E.A1.40.101	Bush, bearing ... ..						1	DTD.412	C		U.2
675	E.A1.40.96	Ring, lower, retaining ball joint ... ..						1	DTD.124	C		U.2
677	E.A1.40.98	Ring, upper, retaining ball joint ... ..						1	DTD.124	C		U.2
680	E.A1.40.99	Stud, retaining rings ... ..						12	S.11	C		U.2
	E.A9.40.63	<b>BUSH</b> , pivot (Mod. 4270) ... ..						2	DTD.412	C		
666	E.A1.40.111	<b>BUSH</b> , torque link leg ... ..						2	DTD.412	C		U.2
		Attaching parts for E.A1.40.111:—										
673	E.A1.40.679	Plug, bearing, bush retaining ... ..						1	L.40	C		U.2
667	E.A1.40.133	<b>DISC</b> , sealing, piston dowel plug ... ..						2	L.40	C		U.2
		Attaching parts for E.A1.40.133:—										
679	E.A1.40.625	Screw, retaining, plug dowel seal ... ..						1	L.40	C		U.2
668	E.A1.40.131	<b>DOWEL</b> , piston ... ..						2	S.11	C		U.2
42059	E.A9.40.56	<b>HEAD</b> , oleo forging (Mod. 4270) ... ..						1	DTD.5094	A/MR		
669	E.A1.40.103	<b>HOOK</b> , "S" shaped, 16 SWG ... ..						2	—	C		U.2
20656	E.A1.40.127	<b>PIPE</b> , stack, assembly ... ..						1	—	B/MR		U.2
		Attaching parts for E.A1.40.127:—										
28F/8014021	AGS.1138/B	Washer, jointing ... ..						1	—	C		
	E.A1.40.18	<b>PISTON, OPERATING, GROUP</b> ... ..						1	—	—		U.2
		Consisting of:—										
1099	EEAS.37/22A	<b>NIPPLE</b> , 2 BA ... ..						2	S.11	C		U.2
670	E.A1.40.647	<b>PISTON</b> ... ..						1	DTD.197	C		U.2
671	E.A1.40.649	<b>PLATE</b> , orifice enclosure control ... ..						1	S.11	C		U.2
		Attaching parts for E.A1.40.649:—										
683	E.A1.40.61	Bolt, attachment, orifice plate ... ..						3	S.11	C		U.2
672	E.A1.40.651	<b>RING</b> , piston ... ..						1	—	C		U.2
	EEAS.38/3A	<b>SPOKE</b> , 2 BA (Make from 28R/6328) ... ..						1	S.11	—		U.2
12914	E.A1.40.118	<b>STRUT</b> , piston, main ... ..						1	T.4	C		U.2
678	E.A1.40.155	<b>RING</b> , sealing at dowel ... ..						2	Synthetic Rubber	C		U.2
	H.PRESSURE COMPS. LTD. GYP.A.58	<b>VALVE</b> , charging ... ..						1	—	C		U.2
28Y/15486		Attaching parts for G.Y.P.A.58:—										
28D/1215078	AS.1246/5C	Bolt, 2 BA ... ..						1	—	C		
681	E.A1.40.105	Tube, distance ... ..						1	L.40	C		U.2
28W/1007983	AGS.162/C	Washer ... ..						1	—	C		
28F/8014021	AGS.1138/B	Washer, jointing ... ..						1	—	C		
682	E.A1.40.149	Washer, locking, valve, 14 SWG ... ..						1	DTD.124	C		U.2

**UNDERCARRIAGE  
MAIN UNDERCARRIAGE, STARBOARD**

Ref. No.	Part No.	Description						No. off	Matl. Spec.	Cl. of Equip.		Plate No.
		1	2	3	4	5	6			M.R.	L.M.	
	E.A3.40.236							1	—	—		
1462	E.A3.40.9							1	—	A		U.2
1463	E.A3.40.10							1	—	A		U.2
521	E.A1.40.467							1	—	C		U.2
522	E.A1.40.465							2	L.40	C		U.2
	E.A1.40.529							1	—	—		U.2
4173	E.A1.40.517							4	—	C		U.2
3632	E.A1.40.28							1	DTD.683	C		U.2
3631	E.A1.40.27							1	DTD.683	C		U.2
28N/9156370	SP.21							5	—	C		
712	E.A1.40.137							1	M.S.	C		U.2
28S/1200034	A31/B16							1	—	C		
28W/3097	AGS.162/B							1	—	C		
27A/2653	DUNLOP KJ.9							1	—	A		U.1
27A/2657	DUNLOP AH.9343							1	—	A		
	or											
27A/3635	DUNLOP AH.50439							1	—	A		
524	E.A1.40.30							1	—	A		
7114	E.A1.40.403							1	L.40	C		U.3

**UNDERCARRIAGE  
MAIN UNDERCARRIAGE, STARBOARD**

Ref. No.	Part No.	Description	No. off	Matl. Spec.	Cl. of Equip.	Plate No.
					M.R. L.M.	
		1 2 3 4 5 6				
13168	E.A3.40.191	LEVER, undercarriage "down" micro switch operating, assembly (Mod. 2151)	1	—	C	U.3
	E.A1.40.31	STAY, side ... .. Add:—	1	DTD.683	—	
32721	E.A1.40.404	BRACKET, sequence valve operating stud ... ..	1	L40	C	U.3
13169	E.A3.40.192	LEVER, undercarriage "down" micro switch operating	1	—	C	U.3
	E.A1.40.32	STAY, side ... ..	1	DTD.683	—	
34173	E.A9.40.44	STAY, SIDE, UNDERCARRIAGE, GROUP (MOD. 3585) Spares for this group are identical with those for group Part No. E.A1.40.30 on page 989, except for the following deletions and additions:— Delete:—	1	—	A	U.1
	E.A1.40.32	STAY, side ... .. Add:—	1	DTD.683	—	
	E.A9.40.40	STAY, side ... ..	1	DTD.5024	—	U.3

Pages ~~993~~ to 1000 not issued  
991



**UNDERCARRIAGE  
MAIN UNDERCARRIAGE PORT AND STARBOARD**

Ref. No.	Part No.	Description						No. off	Matl. Spec.	Cl. of Equip.	Plate No.
		1	2	3	4	5	6			M.R. L.M.	
<b>SUMMARY OF STOCK ITEMS USED ON MAIN UNDERCARRIAGE, PORT AND STARBOARD, ASSEMBLY</b>											
28D/9140638	A25/4B	Bolt, 4 BA	...	...	...	...	...	...		C	
28D/1010142	A25/9B	Bolt, 4 BA	...	...	...	...	...	...		C	
28D/9436920	A25/1C	Bolt, 2 BA	...	...	...	...	...	...		C	
28D/9133011	A25/2C	Bolt, 2 BA	...	...	...	...	...	...		C	
28D/9133012	A25/3C	Bolt, 2 BA	...	...	...	...	...	...		C	
28D/12533	A25/5C	Bolt, 2 BA	...	...	...	...	...	...		C	
28D/7002428	A25/6C	Bolt, 2 BA	...	...	...	...	...	...		C	
28D/1010030	A25/7C	Bolt, 2 BA	...	...	...	...	...	...		C	
28D/1011019	A25/8C	Bolt, 2 BA	...	...	...	...	...	...		C	
28D/9140644	A25/9C	Bolt, 2 BA	...	...	...	...	...	...		C	
28D/9453970	A25/15C	Bolt, 2 BA	...	...	...	...	...	...		C	
28D/12824	A25/4J	Bolt, 1/2" BSF	...	...	...	...	...	...		C	
28D/1011299	A25/6J	Bolt, 1/2" BSF	...	...	...	...	...	...		C	
28D/1011310	A25/8L	Bolt, 3/8" BSF	...	...	...	...	...	...		C	
28D/13715	A25/15L	Bolt, 3/8" BSF	...	...	...	...	...	...		C	
28D/13196	A25/18L	Bolt, 3/8" BSF	...	...	...	...	...	...		C	
28D/8300	AS.1242/1B	Bolt, 4 BA	...	...	...	...	...	...		C	
28D/11890	AS.1246/5C	Bolt, 2 BA	...	...	...	...	...	...		C	
28N/9156370	SP.21	Nipple, lubricating	...	...	...	...	...	...		C	
28M/1011001	A24/NS	Nut, 1/2" BSF	...	...	...	...	...	...		C	
28M/9403519	A27/BP	Nut, 4 BA	...	...	...	...	...	...		C	
28M/9403520	A27/CP	Nut, 2 BA	...	...	...	...	...	...		C	
28M/1011470	A27/GT	Nut, 3/8" BSF	...	...	...	...	...	...		C	
28M/1011476	A27/J5	Nut, 5/8" BSF	...	...	...	...	...	...		C	
28M/9129449	A27/L5	Nut, 3/8" BSF	...	...	...	...	...	...		C	
28M/13259	A27/NS	Nut, 1/2" BSF	...	...	...	...	...	...		C	
28M/13590	A27/SS	Nut, 1/2" BSF	...	...	...	...	...	...		C	
28M/10288	AGS.2001/C/1	Nut, stiff, 2 BA	...	...	...	...	...	...		C	
28M/8925	CD.3	Nut, plate, 2 BA	...	...	...	...	...	...		C	
28P/9429619	SP.9/CS	Pin, split, 3/8" dia. x 3/8" long	...	...	...	...	...	...		C	
28P/1007741	SP.9/C8	Pin, split, 3/8" dia. x 1" long	...	...	...	...	...	...		C	
28P/9429652	SP.9/E10	Pin, split, 3/8" dia. x 1 1/4" long	...	...	...	...	...	...		C	
28P/9429653	SP.9/G12	Pin, split, 1/2" dia. x 1 1/2" long	...	...	...	...	...	...		C	
28P/1011082	SP.9/G16	Pin, split, 5/8" dia. x 2" long	...	...	...	...	...	...		C	
28P/12366	SP.9/K20	Pin, split, 3/4" dia. x 2 1/2" long	...	...	...	...	...	...		C	
28S/1200034	A31/B16	Screw, 4 BA	...	...	...	...	...	...		C	
28S/9437020	A31/C12	Screw, 2 BA	...	...	...	...	...	...		C	
28S/9435713	A31/C20	Screw, 2 BA	...	...	...	...	...	...		C	
28W/9419466	SP.13/J	Washer, 1/2" BSF	...	...	...	...	...	...		C	
28W/9419474	SP.15/B	Washer, 4 BA	...	...	...	...	...	...		C	
28W/9419475	SP.15/C	Washer, 2 BA	...	...	...	...	...	...		C	
28W/9419477	SP.15/I	Washer, 1/2" BSF	...	...	...	...	...	...		C	
28W/9419481	SP.15/Q	Washer, 3/8" BSF	...	...	...	...	...	...		C	
28W/9419404	SP.16/C	Washer, 2 BA	...	...	...	...	...	...		C	
28W/9416642	SP.47/B	Washer, 4 BA, spring	...	...	...	...	...	...		C	
28W/9416632	SP.47/C	Washer, 2 BA, spring	...	...	...	...	...	...		C	
28W/9416644	SP.47/E	Washer, 1/2" BSF, spring	...	...	...	...	...	...		C	
28F/8014021	AGS.1138/B	Washer, 4 BA, jointing	...	...	...	...	...	...		C	

Ref. No.	Part No.	1 2 3 4 5 6	Description	No. off	Matl. Spec.	Cl. of Equip. M.R. L.M.	Plate No.

**UNDERCARRIAGE  
NOSEWHEEL**

Ref. No.	Part No.	Description	No. off	Matl. Spec.	Cl. of Equip.		Plate No.
					M.R.	L.M.	
	E.A9.40.1	<b>NOSEWHEEL, ASSEMBLY (MOD. 1740)</b>	1	—	—		
		Spares for:—					
22055	E.A9.40.15	<b>BLOCK</b> , flexible hose support ... ..	2	LFS.21	C		U.6
		Attaching parts for E.A9.40.15:—					
28D/9133011	A25/2C	Bolt, 2 BA ... ..	1	—	C		
22057	E.A9.40.13	Clip ... ..	1	L.72	C		U.6
28M/10288	AGS.2001/C/1	Nut, 2 BA ... ..	1	—	C		
22329	E.A9.40.17	Washer, corner ... ..	1	L.72	C		U.6
3753	E.A1.40.617	<b>BOLT</b> , adjusting, undercarriage door crosshead stop (Made from A25/6E)	2	—	C		U.6
22373	E.A9.40.19	<b>BOLT</b> , connecting, operating jack to undercarriage locking lever (Pre-Mod. 2704)	1	S.96	C		
32172	E.A9.40.21	<b>BOLT</b> , connecting, operating jack to undercarriage locking lever (Mod. 2704)	1	S.96	C		
169	E.A1.40.605	<b>BOLT</b> , hydraulic jack, anchor ... ..	1	S.65	C		U.6
4507	E.A3.40.139	<b>BOLT</b> , jack, attachment to crossbar ... ..	1	S.11	C		U.6
163	E.A1.40.491	<b>BOLT</b> , nosewheel door "up" latch, forward ... ..	1	S.11	C		U.4
164	E.A1.40.493	<b>BOLT</b> , nosewheel door "up" latch, aft ... ..	1	S.11	C		U.6
22056	E.A9.40.11	<b>BOLT</b> , nose undercarriage jack hinge ... ..	1	S.96	C		U.6
12023	E.A3.40.159	<b>BRACKET, UNDERCARRIAGE "UP" HOOK, GROUP (MOD. 1033)</b>	1	—	B		U.4
		Consisting of:—					
	E.A1.40.385	<b>BEAM, BRACKET, LOCKING HOOK, GROUP</b> ...	1	—	—		U.4
		Spares for:—					
20845	E.A1.40.369	<b>LUG</b> ... ..	1	L.40	C/MR		U.4
25628	E.A1.40.377	<b>PLATE</b> , locking ... ..	1	L.72	C		U.4
		Attaching parts for E.A1.40.385:—					
28D/1012995	A25/22C	Bolt, 2 BA ... ..	8	—	C		
28M/9403520	A27/CP	Nut, 2 BA ... ..	8	—	C		
	E.A1.40.381	Tube, distance ... ..	8	L.62	LM		U.4
28W/1007983	AGS.162/C	Washer, 2 BA ... ..	8	—	C		
12024	E.A3.40.151	<b>BOLT</b> , stop, for buffer, assembly ... ..	2	—	C		U.4
		Attaching parts for E.A3.40.151:—					
28M/10292	AGS.2001/J/1	Nut, $\frac{3}{8}$ " BSF ... ..	1	—	C		
174	E.A1.40.399	Washer ... ..	1	L.A.	C		U.4
22251	E.A1.40.373	<b>BRACKET</b> , hook, suspension ... ..	1	S.11	C		U.4
		Attaching parts for E.A1.40.373:—					
28M/10292	AGS.2001/J/1	Nut, $\frac{3}{8}$ " BSF ... ..	1	—	C		
28W/9419489	SP.16/J	Washer, $\frac{3}{8}$ " BSF ... ..	1	—	C		
174	E.A1.40.399	Washer ... ..	1	L.A.	C		U.4
12025	E.A3.40.143	<b>HOOK, UNDERCARRIAGE "UP" LATCH, GROUP</b>	1	—	C		U.4
		Consisting of:—					
13109	E.A3.40.147	<b>BOLT</b> , special ... ..	1	DTD.126A	C		U.4
	E.A1.40.393	<b>BUSH</b> ... ..	1	DTD.197	—		U.4
	E.A3.40.145	<b>HOOK</b> , "up" latch ... ..	1	—	—		U.4
28M/9403520	A27/CP	<b>NUT</b> , 2 BA ... ..	1	—	C		
28W/1007983	AGS.162/C	<b>WASHER</b> , 2 BA ... ..	1	—	C		
		Attaching parts for E.A3.40.143:—					
171	E.A1.40.371	Bolt, pivot for hook ... ..	1	S.11	C		U.4
28M/1011467	A27/ES	Nut, $\frac{1}{2}$ " BSF ... ..	1	—	C		

Page 1004		<b>UNDERCARRIAGE NOSEWHEEL</b>				CANBERRA P.R. Mk. 3						
Ref. No.	Part No.	Description						No. off	Matl. Spec.	Cl. of Equip.		Plate No.
		1	2	3	4	5	6			M.R.	L.M.	
20846	E.A1.40.389	<b>SCREW</b> , adjusting, hook stop ... ..						1	S.11	C/MR	U.4	
28M/12928	A27/EP	Attaching parts for E.A1.40.389:— Nut, 1/4" BSF ... ..						1	—	C		
4694	E.A3.40.93	<b>CROSSHEAD, NOSEWHEEL DOORS, C/W VALVE TRIP, ASSEMBLY</b>						1	—	B/MR	U.6	
		Spares for:—										
5514	E.A3.40.97	<b>PIN</b> , roller, top ... ..						1	S.11	C	U.6	
12926	E.A3.40.181	<b>PIN</b> , roller, bottom ... ..						1	S.11	C	U.6	
178	E.A1.40.553	<b>ROLLER</b> , guide ... ..						2	DTD.683	C	U.6	
5515	E.A1.40.561	<b>VALVE</b> , trip ... ..						1	—	C	U.6	
		Attaching parts for E.A1.40.561:—										
28S/1011504	A33/C32	Screw, 2 BA ... ..						1	—	C		
	E.A3.40.95	<b>YOKE</b> , crosshead ... ..						1	—	—	U.6	
39181	E.A9.40.35	<b>LEVER</b> , micro-switch operating, undercarriage door, front latch (Mod. 2183)						1	—	C	U.4	
		Attaching parts for E.A9.40.35:—										
28D/9140647	A25/14C	Bolt, 2 BA ... ..						1	—	C		
28M/10288	AGS.2001/C/1	Nut, 2 BA ... ..						1	—	C		
3755	E.A1.40.731	Piece, distance ... ..						1	—	C		
4141	E.A1.45.989	Shim ... ..						2	—	C	U.4	
	AS.2811/7/023	Spacer ... ..						2	L.62	LM		
3751	E.A1.40.567	<b>LEVER, UNDERCARRIAGE SEQUENCE VALVE, GROUP</b>						1	—	B/MR	U.6	
		Spares for:—										
179	E.A1.40.569	<b>TAPPET</b> , valve screw ... ..						1	S.11	C	U.6	
		Attaching parts for E.A1.40.569:—										
28M/12931	A27/ET	Nut, 1/4" BSF ... ..						1	—	C		
		Attaching parts for E.A1.40.567:—										
166	E.A1.40.581	Bolt, fulcrum ... ..						1	S.11	C	U.6	
28M/1006939	A27/GP	Nut, 5/8" BSF ... ..						1	—	C		
1078	EEAS.28/35FU	Washer, packing 0"33 dia. ... ..						1	DTD.124	C		
3754	E.A1.40.703	<b>LEVER, BRACKET, UNDERCARRIAGE SEQUENCE VALVE, GROUP</b>						1	—	B/MR	U.4	
		Spares for:—										
	E.A1.40.707	<b>BRACKET</b> , valve, sequence, front ... ..						1	—	—	U.4	
	E.A1.40.705	<b>BRACKET</b> , valve, sequence, rear ... ..						1	—	—	U.4	
		Attaching parts for E.A1.40.707 and E.A1.40.705:—										
28D/9133012	A25/3C	Bolt, 2 BA ... ..						2	—	C		
28M/10288	AGS.2001/C/1	Nut, 2 BA ... ..						2	—	C		
	E.A1.40.573	<b>LEVER</b> , sequence valve operating ... ..						1	DTD.683	—	U.4	
		Attaching parts for E.A1.40.573:—										
13182	E.A1.40.709	Bolt, fulcrum ... ..						1	S.11	C	U.4	
28M/13121	A27/CS	Nut, 2 BA ... ..						1	—	C		
28W/9419475	SP.15/C	Washer, 2 BA ... ..						1	—	C		
	E.A1.40.711	Washer, fulcrum bolt ... ..						2	L.40	—	U.4	
179	E.A1.40.569	<b>TAPPET</b> , valve screw ... ..						1	S.11	C	U.4	
		Attaching parts for E.A1.40.569:—										
28M/12931	A27/ET	Nut, 1/4" BSF ... ..						1	—	C		

**UNDERCARRIAGE  
NOSEWHEEL**

Ref. No	Part No.	Description	No. off	Matl Spec.	Cl. of Equip.		Plate No
					M.R.	L.M.	
		1 2 3 4 5 6					
180	E.A1.40.531	<b>LINK, DOOR OPERATING, GROUP</b>	2	—	C		U.6
		Spares for:—					
4778	E.A1.40.535	<b>BOLT</b> , eye, assembly	1	—	C		U.6
		Attaching parts for E.A1.40.535:—					
33793	E.A1.40.541	<b>Nut</b>	1	—	C		U.6
	E.A1.40.533	<b>TUBE</b> , assembly	1	—	—		U.6
		Attaching parts for E.A1.40.531:—					
168	E.A1.40.595	<b>Bolt</b> , link to crosshead	1	—	C		U.6
167	E.A1.40.593	<b>Bolt</b> , link to door	1	—	C		U.6
28M/1011467	A27/ES	<b>Nut</b> , 1/4" BSF	2	—	C		
8987	E.A3.40.169	<b>MUDGUARD, NOSEWHEEL, ASSEMBLY (MOD. 269)</b>	1	—	B		U.4
		Consisting of:—					
5503	E.A3.40.133	<b>FLAP</b> , rubber, nosewheel mudguard	1	Shore 40	C		U.4
5504	E.A3.40.127	<b>MUDGUARD</b> , nosewheel	1	L.72	C		U.4
		Attaching parts for E.A3.40.127:—					
28D/1013177	AS.1242/2E	<b>Bolt</b> , 1/4" BSF	9	—	C		
5505	E.A3.40.131	<b>Nut</b> , 1/4" BSF	3	S.95	C		
28M/12931	A27/ET	<b>Nut</b> , 1/4" BSF	6	—	C		
6948	E.A3.40.165	<b>STAY</b> , mudguard, assembly	1	—	C		U.4
6949	E.A3.40.167	<b>STAY</b> , end, mudguard attachment	3	DTD.683	C		U.4
		Attaching parts for E.A3.40.167:—					
28D/9133012	A25/3C	<b>Bolt</b> , 2 BA	4	—	C		
28M/1006473	A27/CT	<b>Nut</b> , 2 BA	4	—	C		
28W/9419475	SP.15/C	<b>Washer</b> , 2 BA	4	—	C		
20930	E.A3.40.135	<b>STRIP</b> , backing	1	L.72	C/MR		U.4
		Attaching parts for E.A3.40.135:—					
28D/1007974	AS.1242/1/2C	<b>Bolt</b> , 2 BA	3	—	C		
5506	E.A3.40.137	<b>Nut</b> , 2 BA	3	S.95	C		
		Attaching parts for E.A3.40.169:—					
28D/1011300	A27/7J	<b>Bolt</b> , 3/8" BSF	3	—	C		
28W/9419477	SP.15/J	<b>Washer</b> , 3/8" BSF	3	—	C		
8988	E.A3.40.170	<b>MUDGUARD, NOSEWHEEL, ASSEMBLY (MOD. 269)</b>	1	—	B		U.4
		Spares for this assembly are identical with those for Pt. No. E.A3.40.169					
28N/9156370	SP.21	<b>NIPPLE</b> , lubricating	1	—	C		
3688	E.A6.40.37	<b>ROD, RADIUS, GROUP</b>	1	—	A		U.5
		Consisting of:—					
5126	E.A3.40.77	<b>BRACKET</b> , micro-switch	1	L.72	C		U.5
		Attaching parts for E.A3.40.77:—					
28D/9436920	A25/1C	<b>Bolt</b> , 2 BA	3	—	C		
28W/9416643	SP.47/C	<b>Washer</b> , 2 BA	3	—	C		
3656	E.A3.40.65	<b>BUSH</b> , spring plunger	1	DTD.197	C		U.5
186	E.A1.40.621	<b>DOWEL</b>	2	S.11	C		U.5
	E.A1.40.293	<b>END, PLUG, RADIUS ROD, GROUP (PRE-MOD. 12)</b>	1	—	—		
		Spares for:—					
187	E.A1.40.363	<b>BUSH</b> , bearing	2	DTD.197	C		
28N/9156370	SP.21	<b>NIPPLE</b> , lubricating	1	—	C		

**UNDERCARRIAGE  
NOSEWHEEL**

Ref. No.	Part No	Description	No. off	Mach. Spec	Cl. of Equip.	Plate No
					M.R. L.M.	
1893	E.A6.40.21	<b>END, PLUG, RADIUS ROD, GROUP (MOD. 12)</b>	1	—	B	U.5
		Spares for:—				
187	E.A1.40.363	<b>BUSH</b> , bearing	2	DTD.197	C	U.5
28N/9156370	SP.21	<b>NIPPLE</b> , lubricating	1	—	C	
4937	E.A1.40.311	<b>FINGER</b> , operating, undercarriage "Up" micro-switch	1	L.40	C	U.5
		Attaching parts for E.A1.40.311:—				
4447	E.A1.40.321	Bolt, bearing	1	DTD.126A	C	U.5
28M/9436836	AGS.2001/C/2	Nut, 2 BA	1	—	C	
28W/9419402	SP.13/C	Washer, 2 BA	1	—	C	
	E.A1.40.261	<b>FORK</b> , strut end (Pre-Mod. 12)	1	DTD.683	—	
1894	E.A6.40.29	<b>FORK</b> , strut end (Mod. 12)	1	DTD.683	C	U.5
3655	E.A3.40.73	<b>HOUSING</b> , spring locking plunger	1	L.40	C	U.5
		Attaching parts for E.A3.40.73:—				
28D/1011240	A25/5E	Bolt, 1/2" BSF	4	—	C	
28W/9416644	SP.47/E	Washer, 1/2" BSF	4	—	C	
41255	E.A9.40.49	<b>LEVER, LOCKING, NOSEWHEEL, UNDER-CARRIAGE, GROUP (MOD. 3487)</b>	1	—	B	U.5
		Spares for:—				
190	E.A1.40.337	<b>BUSH</b> , bearing	2	DTD.197	C	U.5
28N/9156370	SP.21	<b>NIPPLE</b> , lubricating	1	—	C	U.5
192	E.A1.40.339	<b>ROLLER</b> , assembly	1	—	C	U.5
		Attaching parts for E.A1.40.339:—				
188	E.A1.40.343	Bolt	1	S.11	C	U.5
28M/1011467	A27/ES	Nut, 1/4" BSF	1	—	C	
28W/9419405	SP.15/E	Washer, 1/4" BSF	1	—	C	
191	E.A1.40.341	<b>ROLLER</b> , assembly	1	—	C	U.5
		Attaching parts for E.A1.40.341:—				
189	E.A1.40.345	Bolt	1	S.11	C	U.5
28M/1011467	A27/ES	Nut, 1/4" BSF	1	—	C	
28W/9419405	SP.15/E	Washer, 1/4" BSF	1	—	C	
549	EEA5.5	<b>WASHER</b> , for grease nipple (Only required when locking lever is unit modified)	1	BSS.216	C	U.5
		Attaching parts for E.A9.40.49:—				
34309	E.A9.40.47	Bolt, operating, lever bearing (Mod. 3487)	1	S.96	C	U.5
28M/1011476	A27/JS	Nut, 1/4" BSF	1	—	C	
203	E.A1.40.327	Washer, at operating lever bearing	1	DTD.126A	C	U.5
1889	E.A6.40.23	<b>LINK, STAY, NOSEWHEEL, UNDERCARRIAGE, AT RADIUS ROD, GROUP</b>	1	—	C	U.5
		Spares for:—				
194	E.A1.40.359	<b>BUSH</b> , bearing	2	DTD.197	C	U.5
195	E.A1.40.361	<b>BUSH</b> , bearing	2	DTD.197	C	U.5
28N/9156370	SP.21	<b>NIPPLE</b> , lubricating	2	—	C	
		Attaching parts for E.A6.40.23:—				
184	E.A1.40.681	Bolt, connecting, radius rod and stay link	1	S.11	C	U.5
170	E.A1.40.683	Bolt, connecting, stay link and leg	1	S.11	C	U.4
28M/9129449	A27/LS	Nut, 1/8" BSF	2	—	C	
28S/9146378	A35/C8	Screw, 2 BA	1	—	C	
202	E.A1.40.325	Washer, cap	2	DTD.126A	C	U.5
28W/9416643	SP.47/C	Washer, 2 BA	1	—	C	

**UNDERCARRIAGE  
NOSEWHEEL**

Ref. No	Part No.	1	2	3	4	5	6	Description	No. off	Matl. Spec.	Cl. of Equip.		Plaze No.
											M.R.	L.M.	
28N/9156370	SP.21							<b>NIPPLE</b> , lubricating ... ..	1	—	C		U.5
1100	EEAS.37/24A							<b>NIPPLE</b> , 1/4" ... ..	24	—	C		U.5
6187	E.A1.40.415							<b>PAD</b> , switch-micro, undercarriage "DOWN" ...	1	L.40	C		U.5
								Attaching parts for E.A1.40.415:—					
28D/9133012	A25/3C							Bolt, 2 BA ... ..	3	—	C		
28W/9416643	SP.47/C							Washer, 2 BA ... ..	3	—	C		
3659	E.A3.40.75							<b>PIN</b> , latch ... ..	1	S.11	C		U.5
197	E.A1.40.277							<b>PLATE</b> , stop, stay link ... ..	1	S.11	C		U.5
								Attaching parts for E.A1.40.277:—					
28D/1011240	A25/5E							Bolt, 1/2" BSF ... ..	2	—	C		
28W/9416644	SP.47/E							Washer, 1/2" BSF ... ..	2	—	C		
3657	E.A3.40.67							<b>SCREW</b> , cap, retaining, locking plunger ... ..	1	L.40	C		U.5
3660	E.A3.40.71							<b>SCREW</b> , grub, latch pin and bush, retaining ...	1	S.97	C		U.5
199	E.A1.40.431							<b>SPINDLE</b> , hook latch, nosewheel undercarriage	1	S.11	C		U.5
								stay					
								Attaching parts for E.A1.40.431:—					
28N/2001540	AGS.2031/4							Circlip, "Seegar" external, 5/8" dia. ... ..	2	—	C		
	E.A1.40.309							Tube, distance ... ..	1	—	—		U.5
3658	EEAS.38/4A							<b>SPOKE</b> , 1/2" BSF (Make from 28R/6330) ... ..	12	S.11	LM		U.5
201	E.A3.40.69							<b>SPRING</b> , compression, operating locking plunger,	1	—	C		U.5
								14 SWG					
5CW/4638	E.A1.40.313							<b>SPRING</b> , leaf, micro-switch operating finger ...	1	—	C		U.5
	†							<b>SWITCH</b> , micro, type 1A, undercarriage "Up"	1	—	B		
								(Pre-Mod. 3562)					
5CW/6575	†							<b>SWITCH</b> , micro, type 1A, undercarriage "Up"	1	—	B		
								(Mod. 3562) (Pre-Mod. 4080)					
5CW/11254	†							<b>SWITCH</b> , micro, type 1.HY.1, undercarriage	1	—	B		
								"DOWN" (Mod. 4080)					
								Attaching parts for switches:—					
28D/1011011	A25/8B							Bolt, 4 BA ... ..	2	—	C		
28M/10287	AGS.2001/B/1							Nut, 4 BA ... ..	2	—	C		
28W/9419474	SP.15/B							Washer, 4 BA ... ..	2	—	C		
5CW/4639	†							<b>SWITCH</b> , micro, type 4A, undercarriage "Down"	1	—	B		
								(Pre-Mod. 3562)					
5CW/6672	†							<b>SWITCH</b> , micro, type 4A, undercarriage "Down"	1	—	B		
								(Mod. 3562) (Pre-Mod. 4080)					
5CW/11254	†							<b>SWITCH</b> , micro, type 1.HY.1, undercarriage	1	—	B		
								"up" (Mod. 4080)					
								Attaching parts for switches:—					
28D/1214303	AS.1242/10B							Bolt, 4 BA ... ..	2	—	C		
28M/10287	AGS.2001/B/1							Nut, 4 BA ... ..	2	—	C		
28W/9419474	SP.15/B							Washer, 4 BA ... ..	2	—	C		
1895	E.A1.40.267							<b>TUBE</b> , strut, nose undercarriage (Pre-Mod. 12) ...	1	DTD.408	—		
	E.A6.40.27							<b>TUBE</b> , strut, nose undercarriage (Mod. 12) ...	1	T.60	C		U.5
								Attaching parts for E.A6.40.37:—					
161	E.A1.40.451							Bolt, c/w spoke and nut ... ..	1	—	C		U.6
28M/9129449	A27/LS							Nut, 1/8" BSF ... ..	1	—	C		
181	E.A1.40.449							Pin, strut pivot, radius rod bearing ... ..	1	S.65	C		U.6
202	E.A1.40.325							Washer, cap ... ..	2	DTD.126A	C		U.6
3748	E.A1.40.455							<b>SCREW</b> , grub, 2 BA, strut bearing, retaining ...	1	S.11	C/MR		U.6
343	E.A1.31.277							<b>SHIM</b> ... ..	2	Alumn.	C		
	or												
	EEAS.27/8/4												

**UNDERCARRIAGE  
NOSEWHEEL**

Ref. No	Part No.	Description	No. off	Matl. Spec.	Cl. of Equip.		Plate No.
					M.R.	L.M.	
		1 2 3 4 5 6					
4141	E.A1.45.989	SHIM ... ..	2	Alumn.	C		
204	E.A1.40.599	SPRING, return, undercarriage hook ... ..	1	—	C		U.4
205	E.A1.40.601	SPRING, tension, undercarriage sequence valve ... ..	1	—	C		U.6
1587	E.A1.40.719	SPRING, forward door latch ... ..	1	—	C		U.4
4693	E.A3.40.157	STOP, door jack extension ... ..	2	S.11	C/MR		U.6
		Attaching parts for E.A3.40.157:—					
28M/1011467	A27/ES	Nut, 1/2" B&F ... ..	1	—	C		
992	E.A1.40.701	STOP, sequence valve lifter ... ..	1	S.11	C		U.6
39182	E.A9.40.37	TAPPET, front latch lever (Mod. 2183) ... ..	1	—	C		U.4
		Attaching parts for E.A9.40.37:—					
28M/1006473	A27/CT	Nut, 2 BA ... ..	1	—	C		
3755	E.A1.40.731	TUBE, distance ... ..	1	—	C		
	DUNLOP						
27A/2655	KK.2	TUBE ... ..	2	—	A		
	DUNLOP						
27A/2654	KKEN.14N	TYRE, 26" x 6"5 x 14" ... ..	2	—	A		
	or						
	DUNLOP						
27A/4683	DR.2565						
	or						
	FIRESTONE						
	ZA.297						
	or						
	GOODYEAR						
	GA.1202						
	DOWTY						
27Q/1824	O.7907Y.AO1	UNIT, undercarriage (Mod. 2535) (Pre-Mod. 4357 without Mod. 720) (For spares see AP.4515B, Vol. 3, Pt. 1)	1	—	A		
	DOWTY						
27Q/71337	2.00397.040	UNIT, undercarriage (Mod. 4357 without Mod. 720) (For spares see AP.4515B, Vol. 3, Pt. 1)	1	—	A		
	DOWTY						
27Q/1822	O.7906Y.AO1	UNIT, undercarriage (Mod. 2535) (Pre-Mod. 4356, with Mod. 720) (For spares see AP.4515B, Vol. 3, Pt. 1)	1	—	A		
	DOWTY						
27Q/71316	2.00396.038	UNIT, undercarriage (Mod. 4356 with Mod. 720) (For spares see AP.4515B, Vol. 3, Pt. 1)	1	—	A		
3752	E.A1.40.587	WASHER, special, packing undercarriage sequence valve mounting bolt	2	DTD.683	C		U.4
1877	EEAS.28/30EU	WASHER, special, 18 SWG ... ..	1	DTD.124	C		
	DUNLOP						
27A/2814	AH.9590	WHEEL, landing ... ..	2	—	A		

**Pages 1009 to 1018 not issued**



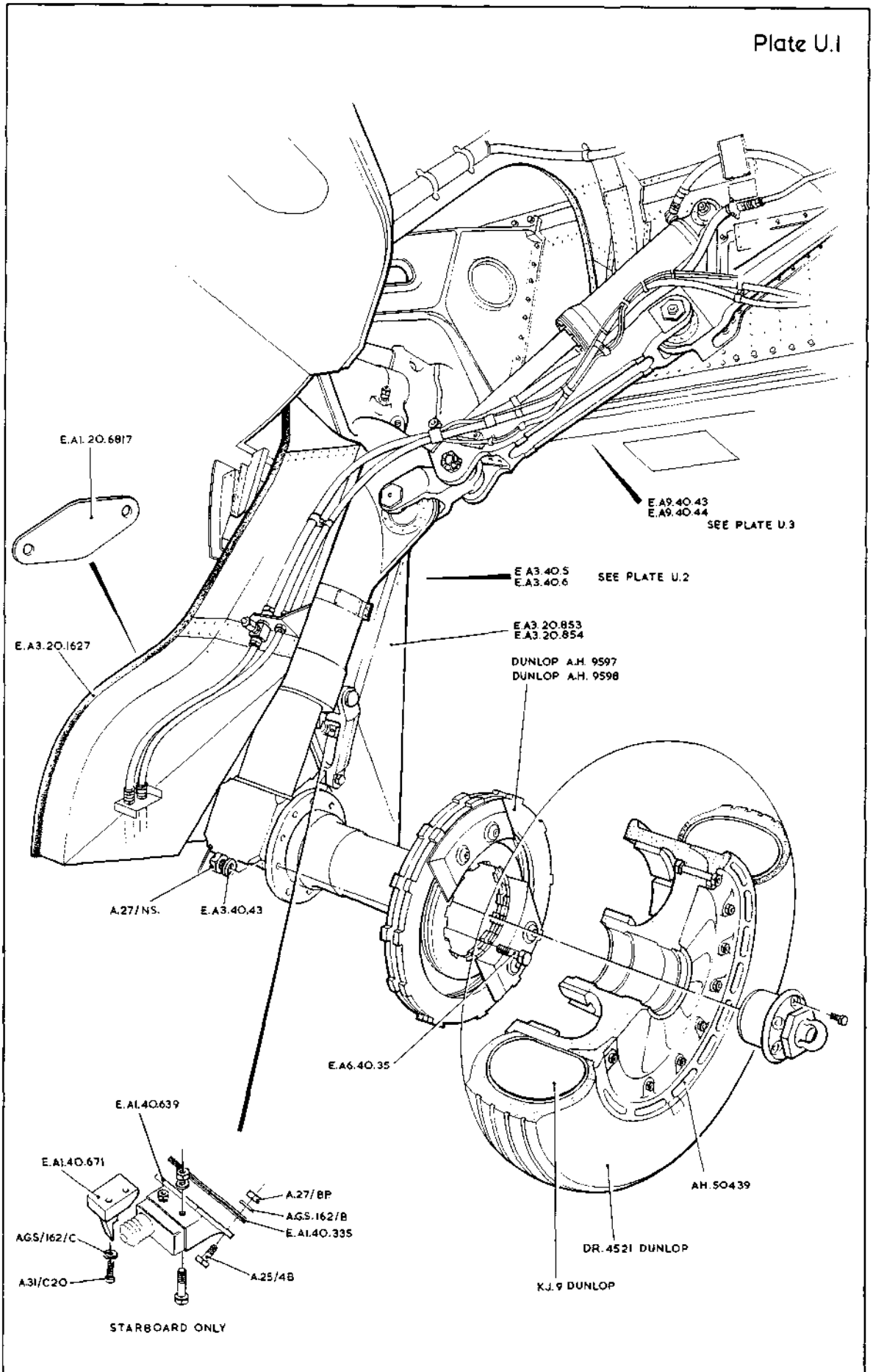
**UNDERCARRIAGE  
NOSEWHEEL**

Ref. No	Part No.	Description	No. off	Mach. Spec.	Cl. of Equip.	Plate No
					M.R. L.M.	
1 2 3 4 5 6						
<b>SUMMARY OF STOCK ITEMS USED ON NOSE WHEEL, ASSEMBLY</b>						
28D/1011011	A25/8B	Bolt, 4 BA	...	...	C	
28D/1200120	A25/14B	Bolt, 4 BA	...	...	C	
28D/9436920	A25/1C	Bolt, 2 BA	...	...	C	
28D/9133011	A25/2C	Bolt, 2 BA	...	...	C	
28D/9133012	A25/3C	Bolt, 2 BA	...	...	C	
28D/9140647	A25/14C	Bolt, 2 BA	...	...	C	
28D/1012995	A25/22C	Bolt, 2 BA	...	...	C	
28D/9140649	A25/23C	Bolt, 2 BA	...	...	C	
28D/1011240	A25/5E	Bolt, 1/2" BSF	...	...	C	
28D/1008145	A25/6E	Bolt, 1/2" BSF	...	...	C	
28D/1011242	A25/7E	Bolt, 1/2" BSF	...	...	C	
28D/1010031	A25/8E	Bolt, 1/2" BSF	...	...	C	
28D/1011300	A25/7J	Bolt, 1/2" BSF	...	...	C	
28D/12282	AS.1242/10B	Bolt, 4 BA	...	...	C	
28D/1007974	AS.1242/1/2C	Bolt, 2 BA	...	...	C	
28D/1013177	AS.1242/2E	Bolt, 1/2" BSF	...	...	C	
28M/13266	A24/ES	Nut, 1/2" BSF	...	...	C	
28M/9403519	A27/BP	Nut, 4 BA	...	...	C	
28M/9403520	A27/CP	Nut, 2 BA	...	...	C	
28M/13121	A27/CS	Nut, 2 BA	...	...	C	
28M/1006473	A27/CT	Nut, 2 BA	...	...	C	
28M/12928	A27/EP	Nut, 1/2" BSF	...	...	C	
28M/1011467	A27/ES	Nut, 1/2" BSF	...	...	C	
28M/12931	A27/ET	Nut, 1/2" BSF	...	...	C	
28M/1006939	A27/GP	Nut, 7/8" BSF	...	...	C	
28M/13122	A27/GS	Nut, 7/8" BSF	...	...	C	
28M/1011470	A27/GT	Nut, 7/8" BSF	...	...	C	
28M/1011476	A27/JS	Nut, 3/4" BSF	...	...	C	
28M/9129449	A27/LS	Nut, 7/8" BSF	...	...	C	
28M/13259	A27/NS	Nut, 1/2" BSF	...	...	C	
28M/10287	AGS.2001/B/1	Nut, stiff, 4 BA	...	...	C	
28M/10288	AGS.2001/C/1	Nut, stiff, 2 BA	...	...	C	
28M/9436836	AGS.2001/C/2	Nut, stiff, 2 BA	...	...	C	
28M/10290	AGS.2001/E/1	Nut, stiff, 1/2" BSF	...	...	C	
28M/10292	AGS.2001/J/1	Nut, stiff, 3/4" BSF	...	...	C	
28M/10339	AGS.2002/C/2	Nut, stiff, 2 BA	...	...	C	
28P/1007741	SP.9/C8	Pin, split, 7/8" dia. x 1" long	...	...	C	
28P/9429652	SP.9/E10	Pin, split, 3/4" dia. x 1 1/2" long	...	...	C	
28P/9429653	SP.9/G12	Pin, split, 1/2" dia. x 1 1/2" long	...	...	C	
28S/9437020	A31/C12	Screw, 2 BA	...	...	C	
28S/9997545	A31/C16	Screw, 2 BA	...	...	C	
28S/1011504	A33/C32	Screw, 2 BA	...	...	C	
28S/9146378	A35/C8	Screw, 2 BA	...	...	C	
28W/9419402	SP.13/C	Washer	...	...	C	
28W/9418921	SP.13/E	Washer	...	...	C	
28W/9419403	SP.13/G	Washer	...	...	C	
28W/9419467	SP.13/L	Washer	...	...	C	
28W/9419474	SP.15/B	Washer	...	...	C	
28W/9419475	SP.15/C	Washer	...	...	C	

**UNDERCARRIAGE  
NOSEWHEEL**

Ref. No.	Part No	Description						No. off	Matl. Spec.	Cl. of Equip. M.R. L.M.	Plate No
		1	2	3	4	5	6				
28W/9419405	SP.15/E	Washer	...	...	...	...	...	...		C	
28W/9419477	SP.15/J	Washer	...	...	...	...	...	...		C	
28W/9419478	SP.15/L	Washer	...	...	...	...	...	...		C	
28W/9419489	SP.16/J	Washer	...	...	...	...	...	...		C	
28W/9416642	SP.47/B	Washer, spring	...	...	...	...	...	...		C	
28W/9416643	SP.47/C	Washer, spring	...	...	...	...	...	...		C	
28W/9416644	SP.47/E	Washer, spring	...	...	...	...	...	...		C	
28W/3099	AGS.162/D	Washer, 1/2" BSF spring	...	...	...	...	...	...		C	
28W/3089	AGS.163/C	Washer, 2 BA spring	...	...	...	...	...	...		C	

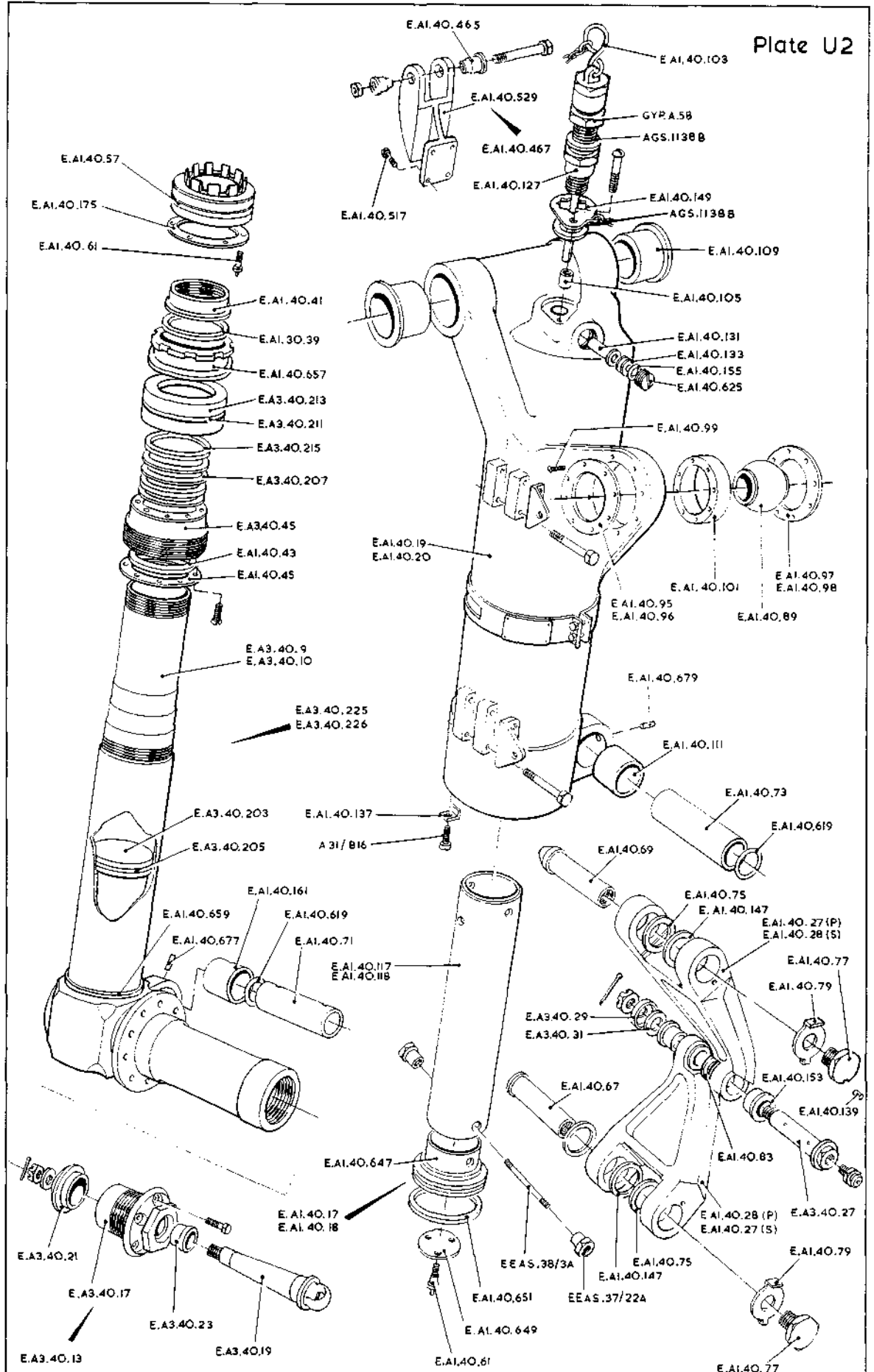
Plate U.1



MAIN UNDERCARRIAGE

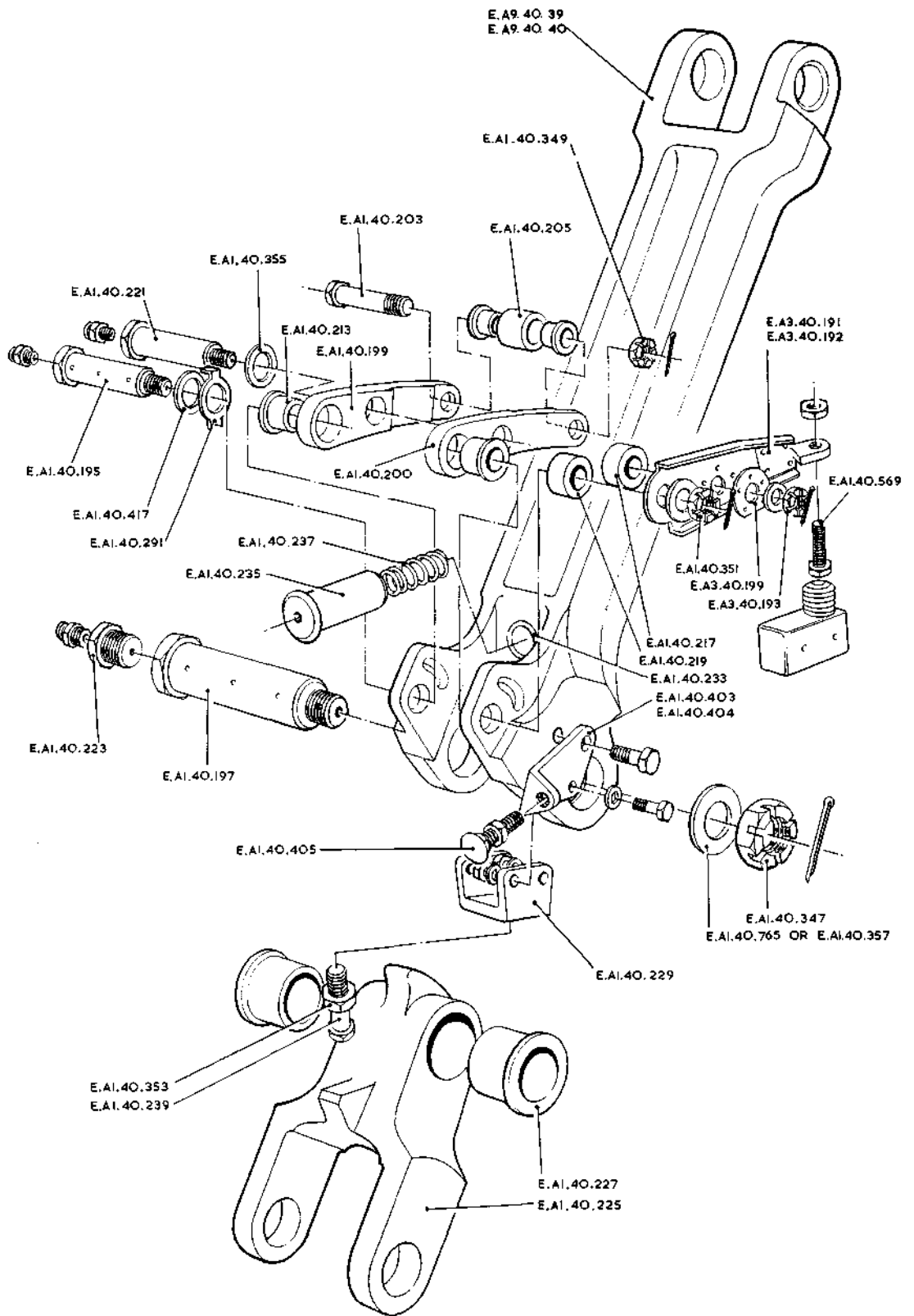


Plate U2



MAIN UNDERCARRIAGE OLEO

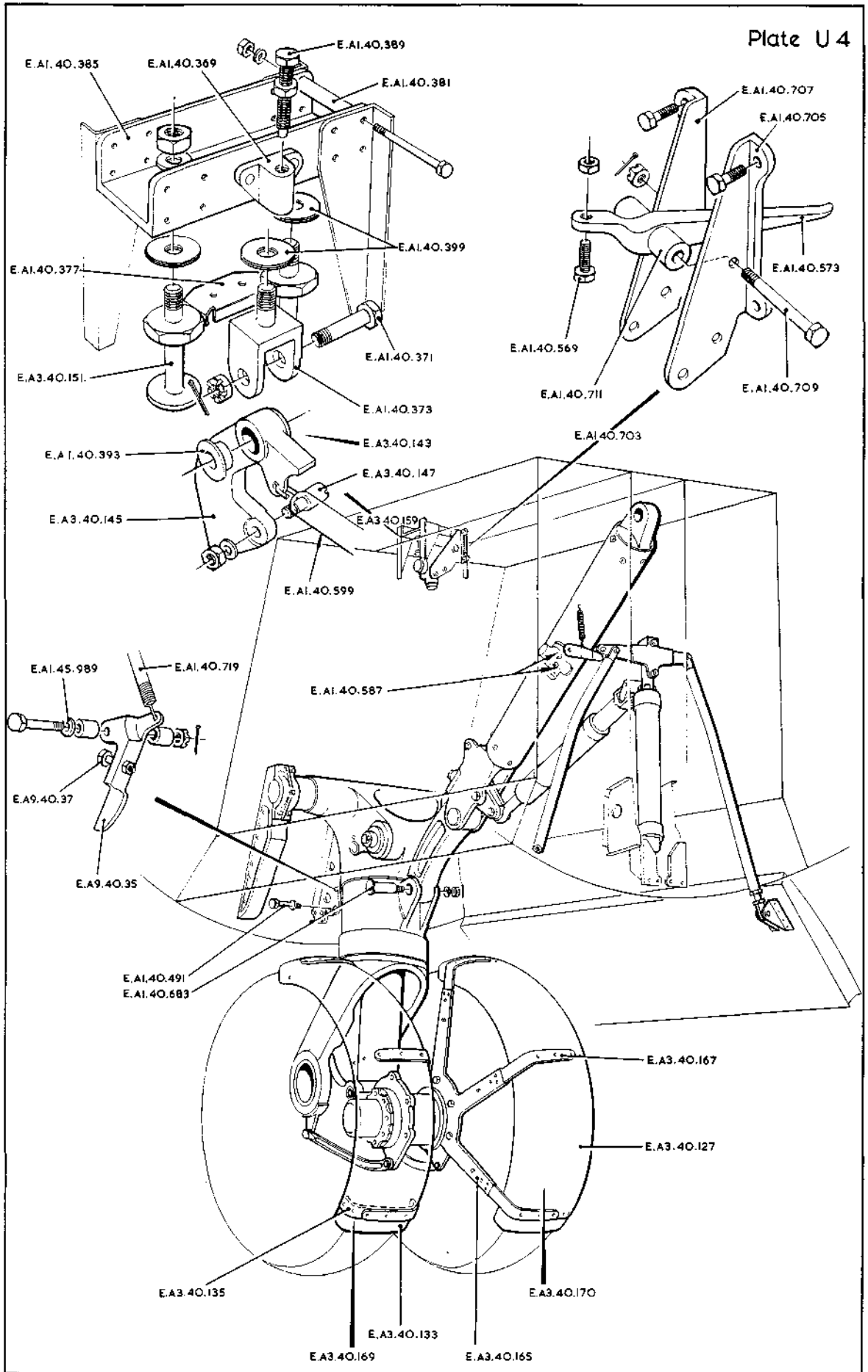




MAIN UNDERCARRIAGE SIDE STAY



Plate U 4



NOSE UNDERCARRIAGE



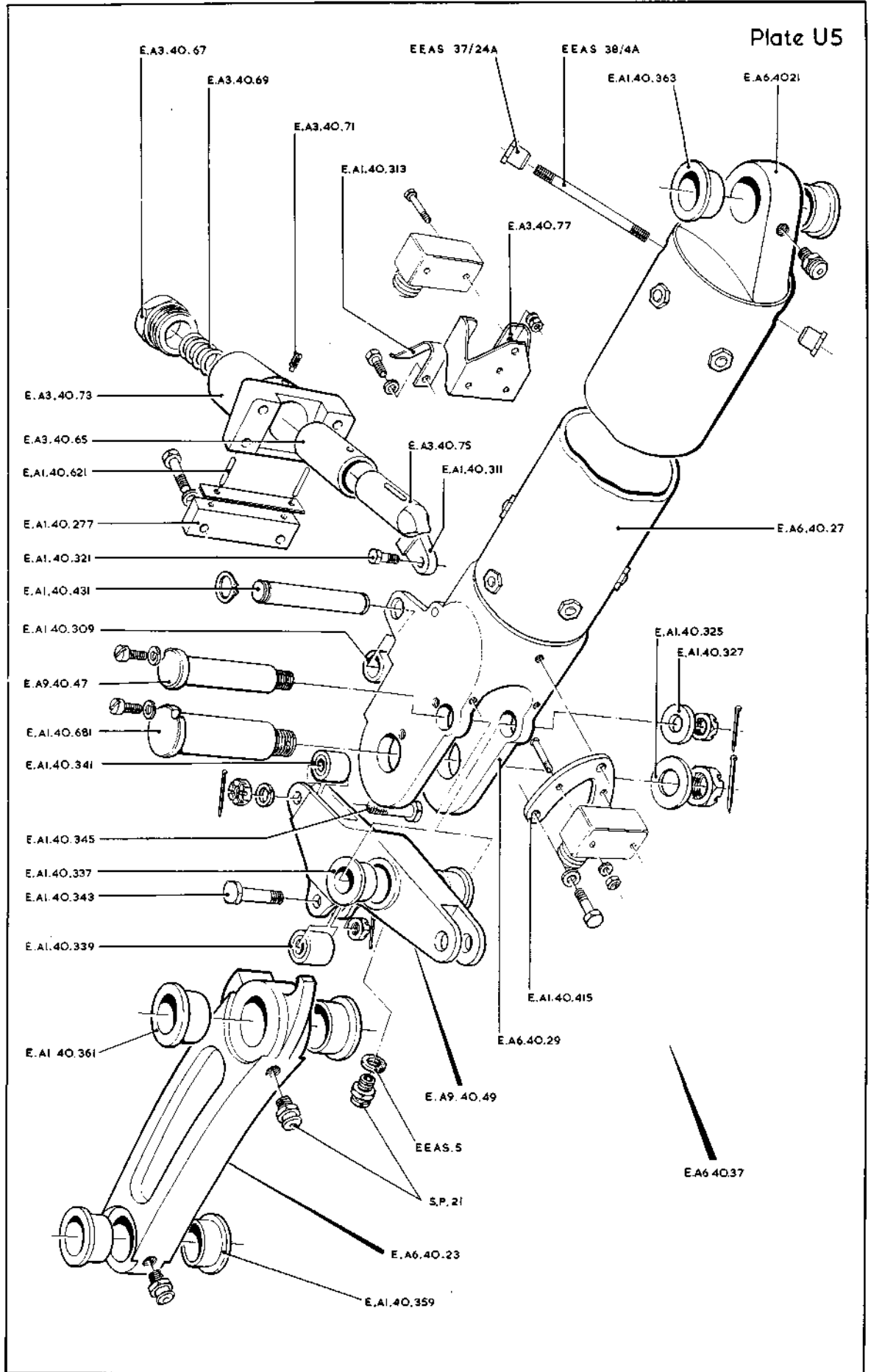
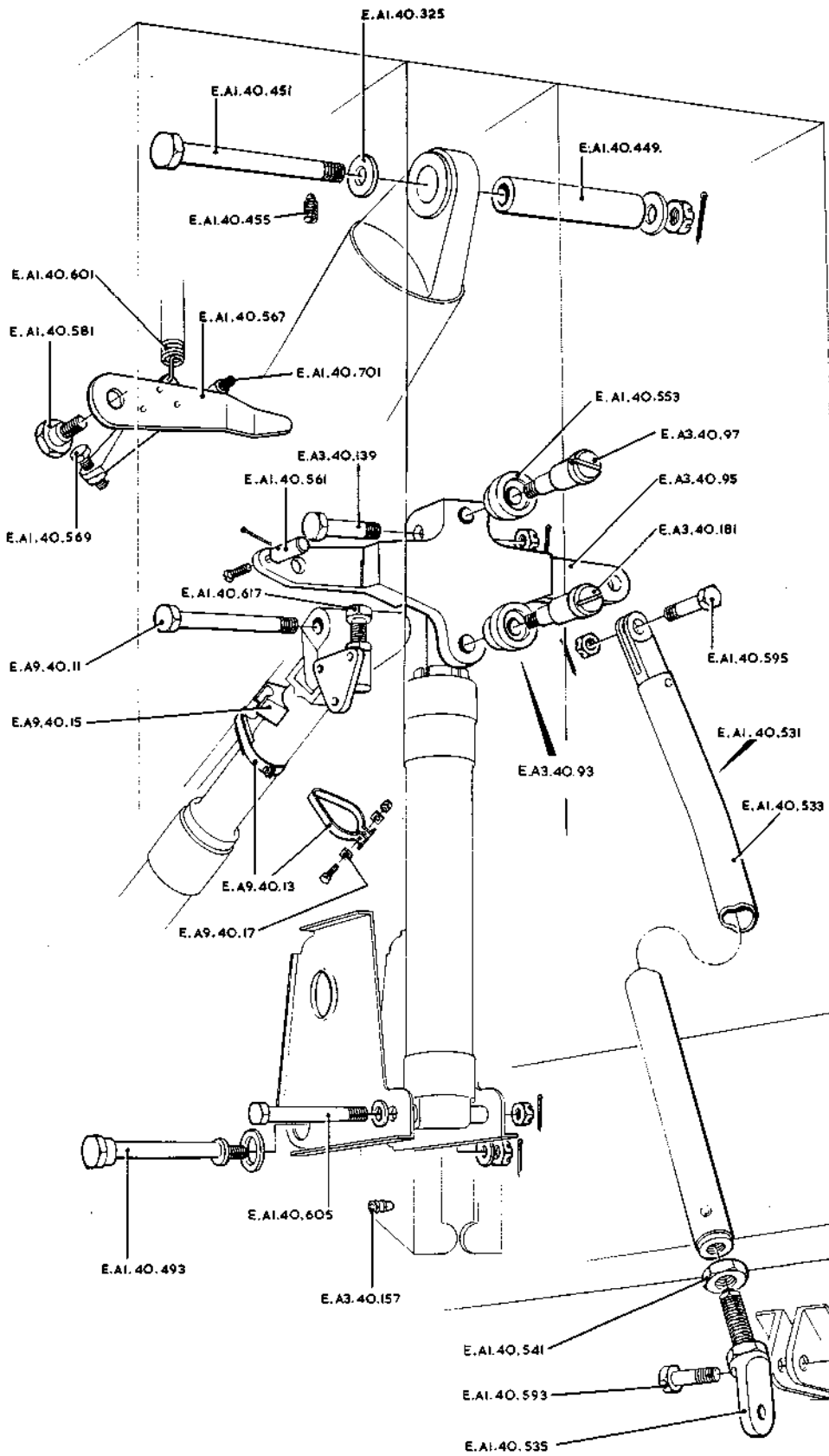


Plate U5

NOSEWHEEL RADIUS ROD





NOSEWHEEL DOOR MECHANISM



This file was downloaded  
from the RTFM Library.

Link: [www.scottbouch.com/rtfm](http://www.scottbouch.com/rtfm)

Please see site for usage terms,  
and more aircraft documents.



**TELEBRIEF  
CONNECTIONS**

**E**