

**POWER INSTALLATION
COWLING, ENGINE, PORT**

Ref. No.	Part No.	Description	No. off	Matl. Spec.	Cl. of Equip.	Plate No.
					M.R. L.M.	
		1 2 3 4 5 6				
	E.A6.50.493	COWLING, ENGINE, PORT, ASSEMBLY	—	—	—	
		Spares for:—				
626	E.A1.50.103	CLIP , toggle hook spring	2	L.72	C	
627	E.A1.50.105	CLIP , toggle hook spring	2	L.72	C	
		Attaching parts for E.A1.50.103 and E.A1.50.105:—				
28D/1007979	AS.1246/1B	Bolt, 4 BA	1	—	C	
28M/1278189	AGS.2001/B/1	Nut, 4 BA	1	—	C	
28W/9419465	SP.13/B	Washer	1	—	C	
5689	E.A6.50.497	COWL, FRONT, ASSEMBLY (Supplied to Drg. E.B6.00.129 with trim allowance and pilot holes drilled, for spares purposes) Spares for:—	1	—	A	P.1
38671	E.A3.00.957	AIR, INTAKE, ASSEMBLY (E.B6.50.557) Spares for:—	1	—	B	
	E.A6.50.519	FRAME, NO. 1, ASSEMBLY Spares for:—	1	—	—	
	E.A6.50.551	RING , sealing (Make from EEAS.140, Ref. 20518)	1	—	LM	
25835	E.A6.50.967	ANGLE , duct extractor, L.H. (Mod. 2114)	1	—	C	
25839	E.A6.50.977	ANGLE , duct extractor, R.H. (Mod. 2114)	1	—	C	
5691	E.A6.50.815	BRACKET , pipe, anti-icing	1	L.72	C	P.1
16444	E.A6.50.821	CLIP , bottom, anti-icing pipe	2	L.72	C	
16443	E.A6.50.819	CLIP , top, anti-icing pipe	2	L.72	C	
		Attaching parts for E.A6.50.821 and E.A6.50.819:—				
28D/9133012	A25/3C	Bolt, 2 BA	2	—	C	
28M/1278190	AGS.2001/C/1	Nut, 2 BA	2	—	C	
25569	E.A6.50.957	COVER , access, P.V. ram (Mod. 1469) Attaching parts for E.A6.50.957:—	1	L.72	C	
28D/1007975	AS.1242/1C	Bolt, 2 BA	12	—	C	
22444	E.A6.50.595	DUCT , stub, bottom, bleed valve	2	—	C	
16434	E.A6.50.789	DUCT , extractor, inboard (Pre-Mod. 2114)	1	—	C	
16433	E.A6.50.787	DUCT , extractor, outboard (Pre-Mod. 2114)	1	—	C	
25837	E.A6.50.971	DUCT , extractor (Mod. 2114) Attaching parts for E.A6.50.971:—	2	S.3	C	
28D/1010030	A25/7C	Bolt, 2 BA	3	—	C	
25838	E.A6.50.975	Spring (Mod. 2114)	3	DTD.215	C	
16377	E.A6.50.511	LAND , nut, ring, starter exhaust duct	3	—	C	
5690	E.A6.50.735	PANEL , access, bleed valve Attaching parts for E.A6.50.735:—	1	—	C	P.1
28D/1218444	AS.1242/1E	Bolt, 1/2" BSF	12	—	C	
20809	E.A6.50.949	PIPE , anti-icing, assembly (Mod. 1473) Attaching parts for E.A6.50.949:—	1	—	B	P.1
5693	E.A6.50.921	Gasket, air duct end	1	Bestobell M4	C	P.1
1025	EEAS.1/1C	Screw, 2 BA	2	S.96	C	
25836	E.A6.50.969	PLATE , doubling, external Attaching parts for E.A6.50.497:—	2	—	C	
1129	E.A1.50.1051	Screw	41	S.11	C	

**POWER INSTALLATION
COWLING, ENGINE, PORT**

Ref. No.	Part No.	Description	No. off	Matl. Spec.	Cl. of Equip.	Plate No.
					M.R. L.M.	
17545	E.A6.50.481	COWL, BOTTOM, REAR (LESS U/C COWL DOOR) ASSEMBLY (PRE-MOD. 2545) (Supplied to Drg. E.B6.00.133 with trim allowance for spares purposes) Spares for:—	1	—	A	P.1
4178	E.A1.50.65	BRACKET , forward hinge, u/c cowl door ...	1	DTD.683	C	
4171	E.A1.50.67	BRACKET , aft hinge, u/c cowl door ...	1	DTD.683	C	
		Attaching parts for E.A1.50.65 and E.A1.50.67:—				
28D/1011023	A25/20C	Bolt, 2 BA (As required) ...	4	—	C	
28D/1011024	A25/21C	Bolt, 2 BA (As required) ...	2	—	C	
28M/1006473	A27/CT	Nut, 2 BA ...	4	—	C	
28W/9419475	SP.15/C	Washer (As required) ...	4	—	C	
28W/9419404	SP.16/C	Washer (As required) ...	2	—	C	
	E.A6.50.483	COWL, BOTTOM, REAR, ASSEMBLY ... Spares for:—	—	—	—	
17710	E.B6.50.57	CLIP , pipe ...	1	—	C	
3815	E.A1.50.872	DUCT ...	1	—	C	
15075	E.A1.50.1591	DUCT ...	1	—	C	
15066	E.A1.50.975	FUNNEL , air duct's, assembly ...	2	—	C	
3821	E.A1.50.1523	OUTLET , drain ...	1	—	C	
17708	E.B6.50.55	PIPE ...	1	—	C	
5182	E.A1.50.1601	PLATE , retaining oil sump drain outlet ...	1	—	C	
	E.A6.50.923	SEAL , rubber (Make from EEAS.157, Ref. 17745)	QR	—	LM	
20626	EEAS.120	SEAL , rubber ...	2	—	C	
	E.B6.50.129	SEAL (Make from Ref. 32C/728) ...	QR	Neoprene	LM	
	E.B6.50.143	SEAL (Make from Ref. 32C/728) ...	2	Neoprene	LM	
37413	E.A6.50.991	SPRING , drain outlet (Mod. 2670) ...	1	—	C	
5014	E.A1.50.1603	SPRING , drain outlet (Pre-Mod. 2670) ...	1	—	C	
5015	E.A1.50.981	SPRING , air duct outlet funnel ...	2	—	C	
15026	E.A1.50.315	DOOR , access, igniter plug ...	2	—	C	
3036	E.A1.50.317	DOOR , access, on bottom rear cowl ...	1	—	C	P.1
3038	E.A1.50.319	DOOR , undercarriage cowl (Supplied with trim allowance for spares purposes) Attaching parts for E.A1.50.319:—	1	—	C	P.1
28N/9153394	AGS.899/6	Collar ...	2	—	C	
28P/5525	SP.4Z/F10	Pin, shackle ...	1	—	C	
28P/12348	SP.4Z/F18	Pin, shackle ...	1	—	C	
28P/9527619	SP.90/C7	Pin, split ...	2	—	C	
639	E.A1.50.365	Washer ...	2	L.46	C	P.1
28FP/120	FJ5/60DS	FASTENER , Dzus ...	4	—	C	
28FP/122	FJ5/70DS	FASTENER , Dzus ...	4	—	C	
28FP/124	FJ5/80DS	FASTENER , Dzus ...	2	—	C	
634	E.A1.50.282	FASTENER, TOGGLE, INBOARD, ASSEMBLY ... Spares for:—	2	—	C	P.1
16312	E.A1.50.95	HANDLE, TOGGLE, FASTENER, ASSEMBLY ... Spares for:—	1	—	C	
28E/9153406	TERRY 169/1"	RING , split ...	1	—	C	P.1
635	E.A1.50.49	SPRING , 19 SWG ... Attaching parts for E.A1.50.95:—	1	—	C	P.1
16313	E.A1.50.155	Pin, stud, special ...	2	S.11	C	
28P/9527619	SP.90/C7	Pin, split ...	2	—	C	

**POWER INSTALLATION
COWLING, ENGINE, PORT**

Ref. No.	Part No.	Description						No. off	Matl. Spec.	Cl. of Equip. M.R. L.M.	Plate No.
		1	2	3	4	5	6				
633	E.A1.50.281	FASTENER, TOGGLE, OUTBOARD, ASSEMBLY Spares for this assembly are identical with those for assembly Part No. E.A1.50.282 on page 796						2	—	C	P.1
637	E.A1.50.284	FASTENER, TOGGLE, INBOARD FRONT, ASSEMBLY Spares for:—						1	—	C	P.1
7133	E.A1.50.97	HANDLE, TOGGLE, FASTENER, ASSEMBLY ... Spares for:—						1	—	C	P.1
28E/9153406	TERRY 169/1"	RING, split						1	—	C	P.1
635	E.A1.50.49	SPRING, 19 SWG						1	—	C	P.1
17661	E.A1.50.157	Attaching parts for E.A1.50.97:—						2	S.11	C	
28P/1220716	SP.90/E4	Pin, stud, special						2	—	C	
		Pin, split						2	—	C	
636	E.A1.50.283	FASTENER, TOGGLE, OUTBOARD, FRONT, ASSEMBLY Spares for this assembly are identical with those for assembly Part No. E.A1.50.284						1	—	C	P.1
628	E.A1.50.161	PANEL, toggle, fastener, housing						6	—	C	P.1
6817	E.B6.50.121	ROD, TENSION, FOR UNDERCARRIAGE COWL DOOR AND CABLE CHECK, ASSEMBLY (MOD. 1013) Consisting of:—						1	—	B	P.1
17719	E.B6.50.115	CABLE, check						1	—	C	
12201	E.B6.50.119	FORK-END						2	S.1	C	
28M/1006473	A27/CT	NUT, 2 BA						2	—	C	
28P/9140979	SP.4Z/B4	PIN, shackle						1	—	C	
28P/1021104	SP.90/C3	PIN, split						1	—	C	
	E.B6.50.117	ROD, connecting						1	S.1	—	
27190	EEAS.27/5EU	WASHER, special						1	—	C	
		Attaching parts for E.B6.50.121:—									
28D/9133012	A25/3C	Bolt, 2 BA						1	—	C	
28D/9140647	A25/14C	Bolt, 2 BA						1	—	C	
28M/9403520	A27/CP	Nut, 2 BA						2	—	C	
28W/9419402	SP.13/C	Washer						2	—	C	
28FP/341	DZUS S5/325	SPRING, fastener						6	—	C	
6503	E.A1.50.1793	WASHER, cup, Dzus fastener, retaining (Mod. 886)						10	DTD.124A	C	
		Attaching parts for E.A6.50.481:—									
1025	EEAS.1/1C	Screw, 2 BA						10	S.11	C	
30858	E.A9.50.27	COWL, BOTTOM, REAR (LESS U/C COWL DOOR) ASSEMBLY (MOD. 2545) (Supplied to Drg. E.A9.00.497 with trim allowance for spares purposes) Spares for this assembly are identical with those for assembly Part No. E.A6.50.481 on page 796, except for the following deletion and addition:— Delete:—						1	—	A	
	E.A6.50.483	COWL, BOTTOM REAR, ASSEMBLY						—	—	—	
	E.A9.50.29	Add— COWL, BOTTOM REAR, ASSEMBLY						—	—	—	

**POWER INSTALLATION
COWLING, ENGINE, PORT**

Ref. No.	Part No.	Description	No. off	Matl. Spec.	Cl. of Equip.	Plate No.
					M.R. L.M.	
15557	E.B6.50.467	COWL, TOP, REAR, ASSEMBLY (Supplied to Drg. E.B6.00.127 with trim allowance for spares purposes) Spares for:—	1	—	A	P.1
28FP/120	FJ5/60DS	FASTENER, Dzus	4	—	C	
28FP/122	FJ5/70DS	FASTENER, Dzus	4	—	C	
28FP/124	FJ5/80DS	FASTENER, Dzus	2	—	C	
634	E.A1.50.282	FASTENER, TOGGLE, OUTBOARD CENTRE, ASSEMBLY Spares for:—	2	—	C	P.1
16312	E.A1.50.95	HANDLE, TOGGLE, FASTENER, ASSEMBLY ... Spares for:—	1	—	C	
28E/9153406	TERRY 169/1"	RING, split	1	—	C	P.1
635	E.A1.50.49	SPRING, 19 SWG	1	—	C	P.1
16313	E.A1.50.155	Attaching parts for E.A1.50.95:—				
28P/9527619	SP.90/C7	Pin, stud, special	2	—	C	
		Pin, split	2	—	C	
633	E.A1.50.281	FASTENER, TOGGLE, INBOARD CENTRE, ASSEMBLY Spares for this assembly are identical with those for assembly Part No. E.A1.50.282	2	—	C	P.1
636	E.A1.50.283	FASTENER, TOGGLE, OUTBOARD, FRONT AND REAR, ASSEMBLY Spares for:—	2	—	C	P.1
7133	E.A1.50.97	HANDLE, TOGGLE, FASTENER, ASSEMBLY ... Spares for:—	1	—	C	P.1
28E/9153406	TERRY 169/1"	RING, split	1	—	C	P.1
635	E.A1.50.49	SPRING, 19 SWG	1	—	C	P.1
17661	E.A1.50.157	Attaching parts for E.A1.50.97:—				
28P/1220716	SP.90/E4	Pin, stud, special	2	S.11	C	
		Pin, split	2	—	C	
637	E.A1.50.284	FASTENER, TOGGLE, INBOARD, FRONT AND REAR, ASSEMBLY Spares for this assembly are identical with those for assembly Part No. E.A1.50.283	2	—	C	P.1
628	E.A1.50.161	PANEL, toggle, fastener, housing	8	—	C	P.1
28FP/341	DZUS S5/325	SPRING	8	—	C	
6503	E.A1.50.1793	WASHER, cup, Dzus fastener, retaining	10	DTD.124A	C	
5696	E.A6.50.593	DUCT, air compressor, bleed valve	2	—	C	P.2
28D/1218444	AS.1242/1E	Attaching parts for E.B6.50.593:— Bolt, 1/4" BSF	16	—	C	
5699	E.A6.50.501	DUCT, engine starter exhaust (Pre-Mod. 2129) ...	3	—	C	P.2
25924	E.A6.50.979	DUCT, engine starter exhaust (Mod. 2129) ...	3	—	C	
28D/1218444	AS.1242/1E	Attaching parts for E.A6.50.501 or E.A6.50.979:— Bolt, 1/4" BSF	8	—	C	
540	E.A1.50.109	FORK-END, fitting, toggle fastener, top cowl, station "D"	2	S.11	C	P.2

**POWER INSTALLATION
COWLING, ENGINE, PORT**

Ref. No.	Part No.	Description						No. off	Matl. Spec.	Cl. of Equip. M.R. L.M.	Plate No.
		1	2	3	4	5	6				
642	E.A1.50.135	FORK-END , fitting, toggle fastener, at station "A" and rear attachment of service panel						6	DTD.683	C	P.2
643	E.A1.50.137	FORK-END , fitting, toggle fastener at station "B" and "C"						8	DTD.683	C	P.2
5697	E.A6.50.901	FORK-END , fitting, toggle fastener, front, outboard attachment of service panel						1	DTD.683	C	P.2
		Attaching parts for E.A1.50.109, E.A1.50.135, E.A1.50.137 and E.A6.50.901:—									
28P/864	SP.4Y/D6	Pin, shackle (as required)						8	—	C	
28P/9016037	SP.4Y/F10	Pin, shackle (as required)						9	—	C	
645	E.A1.50.29	HOOK , cowl, toggle fastener, at station "B" and "C"						8	S.11	C	P.2
646	E.A1.50.45	HOOK , cowl, toggle fastener, at station "A", top cowl at station "D", front outboard and rear attachment of service panel						9	S.11	C	P.2
34189	E.A6.50.25	HOOK, COWL, TOGGLE FASTENER, ASSEMBLY, FOR INBOARD FRONT ATTACHMENT OF SERVICE PANEL (MOD. 1013)						1	—	C	
		Spares for:—									
	E.A6.50.21	FORK-END , fitting						1	—	—	
646	E.A1.50.45	HOOK , toggle, fastener						1	—	C	P.2
6485	E.A1.50.121	ROD , toggle fastener						1	—	C	
		Attaching parts for E.A6.50.25:—									
28P/867	SP.4Y/D9	Pin, shackle						1	—	C	
5698	E.A6.50.5	PANEL, ENGINE, SERVICE, GROUP						1	—	A	P.1 P.2
		(Supplied with trim allowances for spares purposes)									
		Spares for:—									
636	E.A1.50.283	FASTENER, TOGGLE, ASSEMBLY (INBOARD) ...						2	—	C	P.1
		Spares for:—									
7133	E.A1.50.97	HANDLE, TOGGLE, FASTENER, ASSEMBLY ...						1	—	C	P.1
		Spares for:—									
29H/4100	TERRY. 169-1"	RING , split						1	—	C	P.1
635	E.A1.50.49	SPRING , 19 SWG						1	—	C	P.1
		Attaching parts for E.A1.50.97:—									
17661	E.A1.50.157	Pin, stud, special						2	S.11	C	
28P/19128	SP.90/E4	Pin, split						2	—	C	
637	E.A1.50.284	FASTENER, TOGGLE, ASSEMBLY (OUTBOARD)						2	—	C	
		Spares for this assembly are identical to assembly Part No. E.A1.50.283									
	E.A6.50.49	PANEL, SERVICE, ASSEMBLY						—	—	—	
		Spares for:—									
16368	E.A6.50.283	DUCT , ventilating (Pre-Mod. 2127)						2	L.59	C	
30808	E.A9.50.39	DUCT , ventilating (Mod. 2127)						2	L.59	C	
628	E.A1.50.161	PANEL , toggle, fastener housing						4	—	C	P.1
6483	E.A1.50.119	ROD , toggle fastener at station "A" (Mod. 1013)						4	—	C	
5406	E.A1.50.123	ROD , toggle fastener, front outboard, attachment of service panel						1	—	C	
6484	E.A1.50.125	ROD , toggle fastener, rear attachment of service panel						2	—	C	

**POWER INSTALLATION
COWLING, ENGINE, PORT**

Ref. No.	Part No.	Description	No. off	Matl. Spec.	Cl. of Equip.	Plate No.
					M.R. L.M.	
7813	E.A1.50.129	ROD, toggle fastener, at station "B"	4	—	C	
10705	E.A1.50.131	ROD, toggle fastener, at station "C", top cowl, attachment	2	—	C	
5405	E.A1.50.133	ROD, toggle fastener, at station "C", bottom cowl, attachment	2	—	C	
1037	EEAS.1/8E	SCREW, 1/2" BSF, for attachment of hinge bracket on fire wall	2	S.11	—	
651	E.A1.50.101	SPRING, toggle hook, tension	4	—	C	P.2

Pages 801 to 804 not issued

**POWER INSTALLATION
COWLING, ENGINE, STARBOARD**

Ref. No.	Part No.	Description	No. off	Matl. Spec.	Cl. of Equip.	Plate No.
					M.R. L.M	
		1 2 3 4 5 6				
	E.A6.50.495	COWLING, ENGINE, STARBOARD, ASSEMBLY ...	—	—	—	
		Spares for:—				
626	E.A1.50.103	CLIP , toggle, hook spring	2	L.72	C	
627	E.A1.50.105	CLIP , toggle, hook spring	2	L.72	C	
		Attaching parts for E.A1.50.103 and E.A1.50.105:—				
28D/1007979	AS.1246/1B	Bolt, 4 BA	1	—	C	
28M/1278189	AGS.2001/B/1	Nut, 4 BA	1	—	C	
28W/9419474	SP.15/B	Washer	1	—	C	
5700	E.A6.50.499	COWL, FRONT, ASSEMBLY	1	—	A	P.1
		(Supplied to Drg. E.B6.00.131 with trim allowance and pilot holes drilled for spares purposes)				
		Spares for:—				
38672	E.A3.00.963	AIR INTAKE, ASSEMBLY (E.A6.50.861)	1	—	B	
		Spares for:—				
	E.A6.50.855	FRAME, NO. 1, ASSEMBLY	1	—	—	
		Spares for:—				
	E.A6.50.905	RING , sealing (Make from EEAS.140, Ref. 20518)	1	—	LM	
25835	E.A6.50.967	ANGLE , duct extractor, L.H. (Mod. 2114) ...	1	—	C	
25839	E.A6.50.977	ANGLE , duct extractor, R.H. (Mod. 2114) ...	1	—	C	
5701	E.A6.50.881	BRACKET , pipe, anti-icing	1	L.72	C	P.1
16444	E.A6.50.821	CLIP , bottom, anti-icing pipe	2	L.72	C	
16443	E.A6.50.819	CLIP , top, anti-icing pipe	2	L.72	C	
		Attaching parts for E.A6.50.821 and E.A6.50.819:—				
28D/9133012	A25/3C	Bolt, 2 BA	2	—	C	
28M/1278190	AGS.2001/C/1	Nut, 2 BA	2	—	C	
25569	E.A6.50.957	COVER , access, P.V. ram (Mod. 1469)	1	L.72	C	
		Attaching parts for E.B6.50.957:—				
28D/1007975	AS.1242/1C	Bolt, 2 BA	12	—	C	
22444	E.A6.50.595	DUCT , stub, bottom, bleed valve	2	—	C	
16434	E.A6.50.789	DUCT , extractor, inboard (Pre-Mod. 2114) ...	1	—	C	
16433	E.A6.50.787	DUCT , extractor, outboard (Pre-Mod. 2114) ...	1	—	C	
25837	E.A6.50.971	DUCT , extractor (Mod. 2114)	2	S.3	C	
		Attaching parts for E.A6.50.971:—				
28D/1010030	A25/7C	Bolt, 2 BA	3	—	C	
25838	E.A6.50.975	Spring:	3	DTD.215	C	
16377	E.A6.50.511	LAND , nut, ring, starter exhaust duct	3	—	C	
5690	E.A6.50.735	PANEL , access, bleed valve	1	—	C	P.1
		Attaching parts for E.A6.50.735:—				
28D/1218444	AS.1242/1E	Bolt, 3/4" BSF	12	—	C	
20808	E.A6.50.947	PIPE , anti-icing, assembly (Mod. 1473)	1	—	B	P.1
		Attaching parts for E.A6.50.947:—				
5693	E.A6.50.921	Gasket, air duct end	1	Bestobell	C	P.1
			—	M.4	!	
1025	EEAS.1/1C	Screw, 2 BA	2	S.96	C	
25836	E.A6.50.969	PLATE , doubling, external	2	—	C	
		Attaching parts for E.A6.50.499:—				
1129	E.A1.50.1051	Screw	41	S.11	C	

**POWER INSTALLATION
COWLING, ENGINE, STARBOARD**

Ref. No.	Part No.	Description	No. off	Matl. Spec.	Cl. of Equip.	Plate No.
					M.R. L.M.	
		1 2 3 4 5 6				
17546	E.A.6.50.482	COWL, BOTTOM REAR (LESS U/C COWL DOOR), ASSEMBLY (PRE-MOD. 2545) (Supplied to Drg. E.B6.00.134 with trim allowance for spares purposes) Spares for:—	1	—	A	P.1
4143	E.A.1.50.66	BRACKET, forward hinge	1	DTD.683	C	
4144	E.A.1.50.68	BRACKET, aft hinge	1	DTD.683	C	
		Attaching parts for E.A.1.50.66 and E.A.1.50.68:—				
28D/1011023	A25/20C	Bolt, 2 BA (As required)	4	—	C	
28D/1011024	A25/21C	Bolt, 2 BA (As required)	2	—	C	
28M/1006473	A27/CT	Nut, 2 BA	4	—	C	
28W/9419475	SP.15/C	Washer (As required)	4	—	C	
28W/9419404	SP.16/C	Washer (As required)	2	—	C	
	E.A.6.50.484	COWL, BOTTOM REAR, ASSEMBLY Spares for:—	—	—	—	
17710	E.B.6.50.57	CLIP, pipe	1	—	C	
3815	E.A.1.50.872	DUCT	1	—	C	
15075	E.A.1.50.1591	DUCT	1	—	C	
15066	E.A.1.50.975	FUNNEL, air duct, assembly	2	—	C	
3821	E.A.1.50.1523	OUTLET, drain	1	—	C	
17708	E.B.6.50.55	PIPE	1	—	C	
5182	E.A.1.50.1601	PLATE, retaining, oil sump drain outlet	1	—	C	
	E.A.6.50.923	SEAL, rubber (Make from EEAS.157, Ref. 17745)	QR	—	LM	
20626	EEAS.120	SEAL, rubber	2	—	C	
	E.B.6.50.129	SEAL, 1/2" thick (Make from Ref. 32C/728)	QR	Neoprene	LM	
	E.B.6.50.143	SEAL, 1/2" thick (Make from Ref. 32C/728)	2	Neoprene	LM	
37413	E.A.6.50.991	SPRING, drain outlet (Mod. 2670)	1	—	C	
5014	E.A.1.50.1603	SPRING, drain outlet (Pre-Mod. 2670)	1	—	C	
5015	E.A.1.50.981	SPRING, air duct, outlet funnel	2	—	C	
15026	E.A.1.50.315	DOOR, access, igniter plug	2	—	C	
3037	E.A.1.50.318	DOOR, access, in bottom rear cowl	1	—	C	P.1
3039	E.A.1.50.320	DOOR, undercarriage cowl (Supplied with trim Allowance for spares purposes)	1	—	C	P.1
		Attaching parts for E.A.1.50.320:—				
28N/9153394	AGS.899/6	Collar	2	—	C	
28P/5525	SP.4Z/F10	Pin, shackle	1	—	C	
28P/12348	SP.4Z/F18	Pin, shackle	1	—	C	
28P/9527619	SP.90/C7	Pin, split	2	—	C	
639	E.A.1.50.365	Washer	2	L.46	C	
28FP/120	FJ5/60DS	FASTENER, Dzus	4	—	C	
28FP/122	FJ5/70DS	FASTENER, Dzus	4	—	C	
28FP/124	FJ5/80DS	FASTENER, Dzus	2	—	C	
633	E.A.1.50.281	FASTENER, TOGGLE, OUTBOARD, ASSEMBLY	2	—	C	
		Spares for:—				
16312	E.A.1.50.95	HANDLE, TOGGLE, FASTENER, ASSEMBLY	1	—	C	
		Spares for:—				
28E/9153406	TERRY 169/1"	RING, split	1	—	C	
635	E.A.1.50.49	SPRING, 19 SWG	1	—	C	
		Attaching parts for E.A.1.50.95:—				
16313	E.A.1.50.155	Pin, stud, special	2	S.11	C	
28P/9527619	SP.90/C7	Pin, split	2	—	C	

**POWER INSTALLATION
COWLING, ENGINE, STARBOARD**

Ref. No.	Part No.	Description	No. off	Matl. Spec.	Cl. of Equip.	Plate No.
					M.R. L.M.	
634	E.A1.50.282	FASTENER, TOGGLE, INBOARD, ASSEMBLY ... Spares for this assembly are identical with those for assembly Part No. E.A1.50.281 on page 806	2	—	C	P.1
636	E.A1.50.283	FASTENER, TOGGLE, OUTBOARD FRONT, ASSEMBLY Spares for:—	1	—	C	P.1
7133	E.A1.50.97	HANDLE, TOGGLE, FASTENER, ASSEMBLY ... Spares for:—	1	—	C	P.1
29H/4100	TERRY 169/1"	RING, split	1	—	C	P.1
635	E.A1.50.49	SPRING, 19 SWG	1	—	C	P.1
17661	E.A1.50.157	Attaching parts for E.A1.50.97:— Pin, stud, special	2	S.11	C	
28P/19128	SP.90/E4	Pin, split	2	—	C	
637	E.A1.50.284	FASTENER, TOGGLE, INBOARD, FRONT, ASSEMBLY Spares for this assembly are identical with those for assembly Part No. E.A1.50.283	1	—	C	P.1
628	E.A1.50.161	PANEL, toggle, fastener, housing	6	—	C	P.1
6817	E.B6.50.121	ROD, TENSION FOR UNDERCARRIAGE COWL DOOR AND REAR CABLE CHECK, ASSEMBLY (MOD. 1013) Spares for this assembly are identical with those for Part assembly on page 792	1	—	B	P.1
28FP/341	DZUS S5/325	SPRING	6	—	C	
6503	E.A1.50.1793	WASHER, cup, Dzus fastener, retaining (Mod. 886) Attaching parts for E.A6.50.482:—	10	DTD.124A	C	
1025	EEAS.1/1C	Screw, 2.BA	10	S.11	C	
28525	E.A9.50.28	COWL, BOTTOM REAR (LESS U/C COWL DOOR) ASSEMBLY (MOD. 2545) {Supplied to Drg. E.A9.00.498 with trim allowance for spares purposes) Spares for this assembly are identical with those for assembly Part No. E.A6.50.482 on page 806, except for the following deletion and addition Delete:—	1	—	A	
	E.A6.50.484	COWL, BOTTOM REAR, ASSEMBLY Add:—	—	—	—	
	E.A9.50.30	COWL, BOTTOM REAR, ASSEMBLY	—	—	—	
15558	E.A6.50.468	COWL, TOP, REAR, ASSEMBLY {Supplied to Drg. E.B6.00.128 with trim allowance for spares purposes) Spares for this assembly are identical with those for assembly Part No. E.A6.50.467 on page 798	1	—	A	P.1-P.2

**POWER INSTALLATION
COWLING, ENGINE, STARBOARD**

Ref. No.	Part No.	Description	No. off	Matl. Spec.	Cl. of Equip.		Plate No.
					M.R.	L.M.	
		1 2 3 4 5 6					
5696	E.A6.50.593	DUCT , air compressor bleed valve	2	—	C		P.2
		Attaching parts for E.A6.50.593					
28D/1218444	AS.1242/1E	Bolt, 1/2" B.S.F.	16	—	C		
5699	E.A6.50.501	DUCT , engine starter exhaust (Pre-Mod. 2129) ...	3	—	C		P.2
25924	E.A6.50.979	DUCT , engine starter exhaust (Mod. 2129) ...	3	—	C		
		Attaching parts for E.A6.50.501 and E.A6.50.979:—					
28D/1218444	AS.1242/1E	Bolt, 1/2" B.S.F.	8	—	C		
640	E.A1.50.109	FORK-END , fitting, toggle fastener top cowl station "D"	2	S.11	C		P.2
642	E.A1.50.135	FORK- END , fitting, toggle fastener, at station "A" and rear attachment of service panel	6	DTD.683	C		P.2
643	E.A1.50.137	FORK-END , fitting, toggle fastener at station "B" and "C"	8	DTD.683	C		P.2
5704	E.A1.50.159	FORK-END , fitting, toggle fastener front to out-board attachment of service panel	1	DTD.683	C		
		Attaching parts for E.A1.50.109, E.A1.50.135, E.A1.50.137 and E.A1.50.159:—					
28P/864	SP.4Y/D6	Pin, shackle (As required)	8	—	C		
28P/1015710	SP.4Y/D8	Pin, shackle (As required)	1	—	C		
28P/9016037	SP.4Y/F10	Pin, shackle (As required)	8	—	C		
645	E.A1.50.29	HOOK , cowl toggle fastener at station "B" and "C"	8	S.11	C		P.2
646	E.A1.50.45	HOOK , cowl, toggle fastener at station "A" top cowl at station "D" and service panel attachments	10	S.11	C		P.2
5705	E.A6.50.261	PANEL ENGINE SERVICE, ASSEMBLY (Supplied with trim allowance for spares purposes) Spares for this assembly are identical with those for assembly Part No. E.A6.50.5 on page 799, except for the following deletion and addition Delete:—	1	—	A		P.2
	E.A6.50.49	PANEL SERVICE, ASSEMBLY Add:—	—	—	—		
	E.A6.50.259	PANEL SERVICE, ASSEMBLY	—	—	—		
641	E.A1.50.111	ROD-END , fitting, toggle fastener front inboard attachment panel	1	DTD.683	C		P.2
		Attaching parts for E.A1.50.111:—					
28P/873	SP.4Y/D15	Pin, shackle	1	—	C		
16493	E.A6.50.31	ROD , toggle fastener, front outboard attachment service panel	1	—	C		
6483	E.A1.50.119	ROD , toggle fastener at station "A"	4	—	C		
6485	E.A1.50.121	ROD , toggle fastener front inboard attachment service panel	1	—	C		

**POWER INSTALLATION
COWLING, ENGINE, STARBOARD**

Ref. No.	Part No.	Description						No. off	Matl. Spec.	Cl. of Equip. M.R. L.M.	Plate No.
		1	2	3	4	5	6				
6484	E.A1.50.125	ROD, toggle fastener, rear attachment service panel						2	—	C	
7813	E.A1.50.129	ROD, toggle fastener at station "B"						4	—	C	
10705	E.A1.50.131	ROD, toggle fastener at station "C" top cowl attachment						2	—	C	
5405	E.A1.50/133	ROD, toggle fastener at station "C" bottom cowl attachment						2	—	C	
1037	EEAS.1/8E	SCREW, 1/4" B.S.F. for attachment of hinge bracket on fire wall						2	S.11	C	
651	E.A1.50.101	SPRING, toggle hook, tension						4	—	C	

Pages ~~809~~ to 814 not issued

81.

**POWER INSTALLATION
COWLING, ENGINE, PORT AND STARBOARD**

Ref. No.	Part No.	Description	No. off	Mati. Spec.	Cl. of Equip.	Plate No.
					M.R. L.M.	
SUMMARY OF STOCK ITEMS USED ON ENGINE COWLING, PORT AND STARBOARD, ASSEMBLY						
		1 2 3 4 5 6				
28D/9133012	A25/3C	Bolt, 2 BA, hex. head, .75 long ...				C
28D/1010030	A25/7C	Bolt, 2 BA, hex. head, 1.15 long ...				C
28D/9140647	A25/14C	Bolt, 2 BA, hex. head, 1.85 long ...				C
28D/1011023	A25/20C	Bolt, 2 BA, hex. head, 2.45 long ...				C
28D/1011024	A25/21C	Bolt, 2 BA, hex. head, 2.55 long ...				C
28D/1007975	AS.1242/1C	Bolt, 2 BA, c'sk. head, .5 long ...				C
28D/1218444	AS.1242/1E	Bolt, 1/2" BSF, c'sk. head, .55 long ...				C
28D/1007979	AS.1246/1B	Bolt, 4 BA, round head, .45 long ...				C
28N/9153394	AGS.899/6	Collar ...				C
28M/9403520	A27/CP	Nut, 2 BA, plain ...				C
28M/1006473	A27/CT	Nut, 2 BA, thin ...				C
28M/10287	AGS.2001/B/1	Nut, stiff, 4 BA ...				C
28M/10288	AGS.2001/C/1	Nut, stiff, 2 BA ...				C
28P/1021104	SP.90/C3	Pin, split, 1/8" dia. x 1/2" long ...				C
28P/9527619	SP.90/C7	Pin, split, 1/8" dia. x 1" long ...				C
28P/19128	SP.90/E4	Pin, split, 3/16" dia. x 3/4" long ...				C
28P/864	SP.4Y/D6	Pin, shackle ...				C
28P/1015710	SP.4Y/D8	Pin, shackle ...				C
28P/867	SP.4Y/D9	Pin, shackle ...				C
28P/873	SP.4Y/D15	Pin, shackle ...				C
28P/9016037	SP.4Y/F10	Pin, shackle ...				C
28P/9140979	SP.4Z/B4	Pin, shackle ...				C
28P/5525	SP.4Z/F10	Pin, shackle ...				C
28P/12348	SP.4Z/F18	Pin, shackle ...				C
28W/9419465	SP.13/B	Washer, 4 BA, plain ...				C
28W/9419402	SP.13/C	Washer, 2 BA, plain ...				C
28W/9419474	SP.15/B	Washer, 4 BA, plain ...				C
28W/9419475	SP.15/C	Washer, 2 BA, plain ...				C
28W/9419404	SP.16/C	Washer, 2 BA, plain ...				C

**POWER INSTALLATION
ENGINE MOUNTINGS AND ATTACHMENTS, PORT**

Ref. No.	Part No.	Description	No. off	Matl. Spec.	Cl. of Equip.	Plate No.
					M.R. L.M.	
	E.A1.51.1	ENGINE MOUNTINGS AND ATTACHMENTS, PORT, ASSEMBLY	—	—	—	
		Spares for:—				
951	E.A1.51.17	BEARING , spherical, seating, rear engine mounting	2	S.11	C	P.2
954	E.A1.51.3	BRACKET, ENGINE MOUNTING, REAR OUT-BOARD, ASSEMBLY	1	—	B/MR	P.2
		Consisting of:—				
	E.A1.51.11	BRACKET , mounting	1	DTD.683	—	
	E.A1.51.13	CAP , retaining, spherical bearing	1	DTD.683	—	
		Attaching parts for E.A1.51.13:—				
28M/1011473	A27/JP	Nut, $\frac{3}{8}$ " BSF	2	—	C	P.2
28W/683	AGS.195/4	Washer, tab	2	—	C	P.2
957	E.A1.51.15	STUD , special	2	S.11	C	P.2
		Attaching parts for E.A1.51.15:—				
3626	E.A1.51.207	Screw, grub	1	S.11	C	P.2
955	E.A1.51.4	BRACKET, ENGINE MOUNTING, REAR INBOARD, ASSEMBLY	1	—	B/MR	P.2
		Consisting of:—				
	E.A1.51.12	BRACKET , mounting	1	DTD.683	—	
	E.A1.51.13	CAP , retaining, spherical bearing	1	DTD.683	—	
		Attaching parts for E.A1.51.13:—				
28M/1011473	A27/JP	Nut, $\frac{3}{8}$ " BSF	2	—	C	P.2
28W/683	AGS.195/4	Washer, tab	2	—	C	P.2
957	E.A1.51.15	STUD , special	2	S.11	C	P.2
		Attaching parts for E.A1.51.15:—				
3626	E.A1.51.207	Screw, grub	1	S.11	C	P.2
		Attaching parts for E.A1.51.3 and E.A1.51.4:—				
28D/1011258	A25/8G	Bolt, $\frac{5}{8}$ " BSF	6	—	C	
28M/1006939	A27/GP	Nu, $\frac{3}{8}$ " BSF	6	—	C	
	E.A1.51.209	Shim (if required)	2	—	—	
28W/9419476	SP.15/G	Washer $\frac{1}{8}$ " BSF	6	—	C	
958	E.A1.51.5	MOUNTING, ENGINE, FORWARD, INBOARD, ASSEMBLY	1	—	B/MR	P.2
		Spares for:—				
960	E.A1.51.33	BOLT , shouldered, engine mounting	1	S.11	C	P.2
961	E.A1.51.201	BRACKET , engine mounting	1	Z.52	C	P.2
963	E.A1.51.45	FORK-END , for tie rod	1	S.96	C	
964	E.A1.51.27	NUT , locking, plug retaining	1	L.40	C	P.2
965	E.A1.51.25	PLUG , retaining, tie rod ball end	1	L.40	C	P.2
966	E.A1.51.43	ROD , tie, adjustable, spherical end	1	S.65	C	P.2
		Attaching parts for E.A1.51.5:—				
952	E.A1.51.37	Bolt, eye, lower, engine bracket and control bracket mounting	1	S.11	C	P.2
953	E.A1.51.39	Bolt, eye, upper, engine braceket and control bracket mounting	1	S.11	C	P.2
28D/13582	A25/11G	Bolt, $\frac{3}{8}$ " BSF	2	—	C	
28M/1006939	A27/GP	Nut, $\frac{3}{8}$ " BSF	2	—	C	
28M/10291	AGS.2001/G/1	Nut, $\frac{3}{8}$ " BSF	2	—	C	
28W/9419488	SP.16/G	Washer, $\frac{3}{8}$ " BSF	4	—	C	

**POWER INSTALLATION
ENGINE MOUNTINGS AND ATTACHMENTS, PORT**

Ref. No.	Part No.	Description	No. off	Matl. Spec.	Cl. of Equip.			Plate No.
					M.R.	L.M.		
		1 2 3 4 5 6						
6820	E.B6.51.23	MOUNTING, ENGINE, FORWARD, OUTBOARD, ASSEMBLY	1	—	B/MR			
		Spares for:—						
960	E.A1.51.33	BOLT , shouldered, engine mounting	1	S.11	C		P.2	
6821	E.B6.51.21	BRACKET , engine mounting	1	Z.52	C		P.2	
963	E.A1.51.45	FORK-END , for tie rod	1	S.96	C		P.2	
964	E.A1.51.27	NUT , locking, plug retaining	1	L.40	C		P.2	
965	E.A1.51.25	PLUG , retaining, tie rod ball end	1	L.40	C		P.2	
966	E.A1.51.43	ROD , tie, adjustable, spherical end	1	S.65	C		P.2	
		Attaching parts for E.B6.51.23:—						
6819	E.A6.50.899	Bolt, shouldered, front, lower	1	S.96	C		P.2	
28D/1011260	A25/12G	Bolt, $\frac{1}{8}$ " BSF	3	—	C			
28M/10291	AGS.2001/G/1	Nut, $\frac{1}{8}$ " BSF	4	—	C			
28W/9419488	SP.16/G	Washer, $\frac{1}{8}$ " BSF	4	—	C			
971	E.A1.51.19	PIN , spherical bearing, rear inboard bracket, retaining	1	S.11	C		P.2	

Pages 819 to 828 not issued

**POWER INSTALLATION
ENGINE MOUNTINGS AND ATTACHMENTS, STARBOARD**

Ref. No.	Part No.	Description	No. off	Matl. Spec.	Cl. of Equip.		Plate No.
					M.R.	L.M.	
	E.A1.51.2	ENGINE MOUNTINGS AND ATTACHMENTS, STARBOARD, ASSEMBLY Spares for:—	—	—	—		
951	E.A1.51.17	BEARING , spherical, seating, rear engine mounting	2	S.11	C		P.2
954	E.A1.51.3	BRACKET, ENGINE MOUNTING, REAR INBOARD, ASSEMBLY Consisting of:—	2	—	B/MR		P.2
	E.A1.51.11	BRACKET , mounting	1	DTD.683	—		
	E.A1.51.13	CAP , retaining, spherical bearing	1	DTD.683	—		
		Attaching parts for E.A1.51.13:—					
28M/1011473	A27/JP	Nut, $\frac{3}{8}$ " BSF	2	—	C		P.2
28W/683	AGS.195/4	Washer, tab	2	—	C		P.2
957	E.A1.51.15	STUD , special	2	S.11	C		P.2
		Attaching parts for E.A1.51.15:—					
3626	E.A1.51.207	Screw, grub	1	S.11	C		P.2
955	E.A1.51.4	BRACKET, ENGINE MOUNTING, REAR OUTBOARD, ASSEMBLY Consisting of:—	1	—	B/MR		P.2
	E.A1.51.12	BRACKET , mounting	1	DTD.683	—		
	E.A1.51.13	CAP , retaining, spherical bearing	1	DTD.683	—		
		Attaching parts for E.A1.51.13:—					
28M/1011473	A27/JP	Nut, $\frac{3}{8}$ " BSF	2	—	C		P.2
28W/683	AGS.195/4	Washer, tab	2	—	C		P.2
957	E.A1.51.15	STUD , special	2	S.11	C		P.2
		Attaching parts for E.A1.51.15:—					
3626	E.A1.51.207	Screw, grub	1	S.11	C		P.2
		Attaching parts for E.A1.51.3 and E.A1.51.4:—					
28D/1011258	A25/8G	Bolt, $\frac{1}{8}$ " BSF	6	—	C		
28M/1006939	A27/GP	Nut, $\frac{1}{8}$ " BSF	6	—	C		
	E.A1.51.209	Shim, (if required)	2	—	C		
28W/9419476	SP.15/G	Washer, $\frac{1}{8}$ " BSF	6	—	C		
6823	E.A6.50.27	BRACKET , toggle, attachment, forward outboard mounting, assembly Attaching parts for E.A6.50.27:—	1	S.96	C		P.2
28D/1011238	A25/3E	Bolt, $\frac{1}{8}$ " BSF	1	—	C		
28D/1011256	A25/5G	Bolt, $\frac{1}{8}$ " BSF	1	—	C		
28W/9419405	SP.15/E	Washer, $\frac{1}{8}$ " BSF	1	—	C		
28W/9419476	SP.15/G	Washer, $\frac{1}{8}$ " BSF	1	—	C		
28W/9416644	SP.47/E	Washer, $\frac{1}{8}$ " BSF	1	—	C		
28W/9416645	SP.47/G	Washer, $\frac{1}{8}$ " BSF	1	—	C		

POWER INSTALLATION ENGINE MOUNTINGS AND ATTACHMENTS, STARBOARD

Ref. No.	Part No.	Description	No. off	Matl. Spec.	Cl. of Equip.		Plate No.
					M.R.	L.M.	
		1 2 3 4 5 6					
959	E.A1.51.6	MOUNTING, ENGINE, FORWARD, INBOARD, ASSEMBLY	1	—	B/MR		P.2
		Spares for:—					
960	E.A1.51.33	BOLT , shouldered, engine mounting	1	S.11	C		P.2
962	E.A1.51.202	BRACKET , engine mounting	1	Z.52	C		P.2
963	E.A1.51.45	FORK-END , for tie rod	1	S.96	C		P.2
964	E.A1.51.27	NUT , locking, plug retaining	1	L.40	C		P.2
965	E.A1.51.25	PLUG , retaining, tie rod ball end	1	L.40	C		P.2
966	E.A1.51.43	ROD , tie, adjustable, spherical end	1	S.65	C		P.2
		Attaching parts for E.A1.51.6:—					
952	E.A1.51.37	Bolt, eye, lower, engine bracket and control bracket mounting	1	S.11	C		P.2
953	E.A1.51.39	Bolt, eye, upper, engine bracket and control bracket mounting	1	S.11	C		P.2
28D/13582	A25/11G	Bolt, $\frac{1}{8}$ " BSF	2	—	C		
28M/1006939	A27/GP	Nut, $\frac{1}{8}$ " BSF	2	—	C		
28M/10291	AGS.2001/G/1	Nut, $\frac{1}{8}$ " BSF	2	—	C		
28W/9419488	SP.16/G	Washer, $\frac{1}{8}$ " BSF	4	—	C		
6824	E.B6.51.24	MOUNTING, ENGINE, FORWARD, OUTBOARD, ASSEMBLY	1	—	B/MR		
		Spares for:—					
960	E.A1.51.33	BOLT , shouldered, engine mounting	1	S.11	C		P.2
6825	E.B6.51.22	BRACKET , engine mounting	1	Z.52	C		P.2
963	E.A1.51.45	FORK-END , for tie rod	1	S.96	C		P.2
964	E.A1.51.27	NUT , locking, plug retaining	1	L.40	C		P.2
965	E.A1.51.25	PLUG , retaining, tie rod ball end	1	L.40	C		P.2
966	E.A1.51.43	ROD , tie, adjustable spherical end	1	S.65	C		P.2
		Attaching parts for E.B6.51.24:—					
6822	E.A6.50.29	Bolt, eye, toggle bracket, attachment	1	S.96	C		
28D/1011260	A25/12G	Bolt, $\frac{1}{8}$ " BSF	3	—	C		
28M/10291	AGS.2001/G/1	Nut, $\frac{1}{8}$ " BSF	4	—	C		
28W/9419488	SP.16/G	Washer, $\frac{1}{8}$ " BSF	4	—	C		
971	E.A1.51.19	PIN , spherical bearing, rear inboard, bracket retaining	1	S.11	C		P.2

Pages 831 to 840 not issued

**POWER INSTALLATION
ENGINE MOUNTINGS AND ATTACHMENTS, PORT AND STARBOARD**

Ref. No.	Part No.	Description						No. off	Matl. Spec.	Cl. of Equip.		Plate No.
		1	2	3	4	5	6			M.R.	L.M.	
SUMMARY OF STOCK ITEMS USED ON ENGINE MOUNTINGS AND ATTACHMENTS, PORT AND STARBOARD, ASSEMBLY												
28D/1011238	A25/3E	Bolt, 1/2"	BSF			C	
28D/1011256	A25/5G	Bolt, 5/8"	BSF			C	
28D/1011258	A25/8G	Bolt, 7/8"	BSF			C	
28D/13582	A25/11G	Bolt, 1 1/8"	BSF			C	
28D/1011260	A25/12G	Bolt, 1 1/4"	BSF			C	
28M/1006939	A27/GP	Nut, 3/8"	BSF			C	
28M/1011473	A27/JP	Nut, 3/8"	BSF			C	
28M/10291	AGS.2001/G/1	Nut, stiff, 1/2"	BSF			C	
28W/9419405	SP.15/E	Washer			C	
28W/9419476	SP.15/G	Washer			C	
28W/9419488	SP.16/G	Washer			C	
28W/9416644	SP.47/E	Washer, spring			C	
28W/9416645	SP.47/G	Washer, spring			C	
28W/683	AGS.195/4	Washer, tab			C	

**POWER INSTALLATION
R.A.7 ENGINE INSTALLATION, PORT**

Ref. No.	Part No.	Description	No. Off	Matl Spec.	Cl. of Equip.		Plate No.
					M.R.	L.M.	
		1 2 3 4 5 6					
	E.A6.00.13	R.A.7. ENGINE, INSTALLATION, PORT, ASSEMBLY	—	—	—		
		Spares for:—					
5706	E.B7.75.117	ADAPTOR , screwed, cabin pressure system connection at engine	1	S.91	C		P.3
220	EEAS.12/1	BOLT , engine control rod end	2	—	C		
	K.A.C. Co. Ltd.						
5707	C.4205/1 $\frac{1}{4}$ -1 $\frac{1}{2}$ B	CLAMP , pipe toggle at hot air valve	2	—	C		
18634	E.B7.50.85	CONNECTION , banjo fuel drain	1	—	C		
5718	E.A6.47.141	CONTROL , tube, engine throttle	1	—	C		
5718	E.A6.47.141	CONTROL , tube, engine shut off cock	1	—	C		
5708	E.B7.50.23	ELBOW , pipe, assembly, hot air valve to engine ...	1	—	C		P.3
	E.B6.20.181	ENGINE VENTING SYSTEM	—	—	—		
		Spares for:—					
	E.B6.20.171	AIR INTAKE, FOR ZONE 2 COOLING IN INNER WING, LEADING EDGE, ASSEMBLY (PRE-MOD. 2393-2155-2197)	—	—	—		
		Spares for:—					
18556	E.B6.20.213	CLIP , air intake pipe support at rib 3	1	L.72	C/MR		
18547	E.B6.20.173	DUCT , air entry	1	—	B/MR		
4762	E.A3.57.185	HOSE , rubber pipe connection	1	—	C/MR		P.3
18550	E.B6.20.177	PIPE , air intake continuation	1	—	C/MR		
18549	E.B6.20.175	PLATE , doubling	1	L.72	C/MR		
18863	EEAS.66/9	RING , clamping	2	L.72	C/MR		
	E.B6.20.959	AIR INTAKE, FOR ZONE 2 COOLING IN INNER WING, LEADING EDGE, ASSEMBLY (MOD. 2393-2155-2197)	—	—	—		
		Spares for:—					
27294	E.B7.20.420	BRACKET , support for pipe, air continuation to inboard engine rib	1	L.72	MR		
13213	E.A9.20.3241	DUCT , air entry	1	L.59	C		
12349	E.A9.20.1025	HOSE , rubber, pipe connection	2	—	C		
12350	E.A9.20.1017	PIPE , air intake, continuation to inboard engine rib connection	1	L.59	C		
27502	E.B7.20.427	PLATE , reinforcing air intake	1	L.72	MR		
18540	E.B6.20.127	DUCT , air spill pipe, inner wing (Pre-Mod. 2393-2155-2197)	1	L.59	C/MR		
18541	E.B6.20.129	DUCT , air spill pipe, R.H., inner wing	1	L.59	C/MR		
18542	E.B6.20.130	DUCT , air spill pipe, R.H., inner wing	1	L.59	C/MR		
18543	E.B6.20.131	DUCT , air spill pipe, L.H., outer wing	1	L.59	C/MR		
18544	E.B6.20.132	DUCT , air spill pipe, L.H., outer wing	1	L.59	C/MR		
18545	E.B6.20.133	DUCT , air spill pipe, outer wing	1	L.59	C/MR		
13211	E.B7.20.289	DUCT , air spill pipe, R.H., on inboard engine rib (Mod. 2393-2155-2197)	1	L.59	C		
13212	E.B7.20.291	DUCT , air spill pipe, L.H., on inboard engine rib (Mod. 2393-2155-2197)	1	L.59	C		
4762	E.A3.57.185	HOSE , rubber	2	—	C/MR		P.3
18552	E.B6.20.183	PIPE , air intake, continuation inner-wing (Pre-Mod. 2393-2155-2197)	1	L.56	C/MR		
	E.B6.50.21	PIPE, ENGINE VENT, GROUND RUNNING, ASSEMBLY	—	—	—		
		Spares for:—					
18629	E.B6.50.29	CLIP , for pipe mounting bracket	2	L.72	C		
18630	E.B6.50.31	CLIP , for pipe mounting bracket	2	L.72	C		
18627	E.B6.50.23	PIPE	1	L.54	C		
18863	EEAS.66/9	RING , clamping	4	—	C		

**POWER INSTALLATION
R.A.7 ENGINE INSTALLATION, PORT**

Ref. No.	Part No.	Description						No. Off	Matl Spec.	Cl. of Equip.		Plate No.
		1	2	3	4	5	6			M.R.	L.M.	
	E.B6.20.505	SHROUD, FORWARD, ENGINE VENT, ASSEMBLY						—	—	—		
		Spares for:—										
18565	E.B6.20.509	BRACKET , angle, shroud support						12	—	C		
27616	E.B6.20.503	SHROUD , heat, forward (Supplied to Drg. No. E.A3.00.865)						1	—	C		
	E.B6.20.511	SHROUD, REAR ENGINE VENT, ASSEMBLY ...						—	—	—		
		Spares for:—										
18569	E.B6.20.519	BRACKET , shroud fixing						4	DTD.124	C		
18570	E.B6.20.521	BRACKET , shroud fixing						4	DTD.124	C		
18571	E.B6.20.523	BRACKET , shroud fixing						4	DTD.124	C		
18572	E.B6.20.525	BRACKET , shroud fixing						4	DTD.124	C		
18566	E.B6.20.513	SHROUD						1	DTD.171	C		
18567	E.B6.20.515	SHROUD						1	DTD.171	C		
16448	E.B7.50.25	FITTING , end, hot air valve						1	DTD.683	C		
6521	E.B7.50.73	GASKET , for shut off valve end fitting						1	L.59	C		P.3
6522	E.B7.50.75	GASKET , for shut off valve elbow						1	L.59	C		P.3
5710	E.B7.75.119	GASKET , for anti-icing and cabin pressure pipe, engine connection						2	L.59	C		P.3
5709	E.B7.75.115	GASKET , for wheel case breather pipe, engine connection						1	L.59	C		P.3
5711	E.A6.50.833	HOSE , metallic, from hot air valve to anti-icing pipe						1	—	C		P.3
18626	E.A6.50.869	PIPE , assembly, fuel drain (Pre-Mod. 4726) ...						1	DTD.323	C		
	E.A3.50.37	PIPE, FUEL DRAIN, INSTALLATION (MOD. 4726)						—	—	—		
		Spares for:—										
5K/0011351	SP.93/A12	GROMMET						2	—	C		
	E.A3.50.35	PIPE , assembly drain						1	DTD.5019	—		
1383	E.A1.57.15	PIPE , flexible, engine fuel (Dunlop part No. AHM. 541/21.0)						1	—	C		P.3
1384	E.A1.57.16	PIPE , flexible, engine fuel (Dunlop part No. AHM. 542/21.0)						1	—	C		P.3
1381	E.A1.60.57	PIPE , flexible, fire protection (Dunlop Part No. AHO.24508/10.75)						1	WH2/1	C		P.3
12351	E.B7.50.133	PIPE , flanged, engine wheel case breather ½" o/d. x 20 SWG (Mod. 1270)						1	T.26	C		P.3
19847	E.B7.57.189	PIPE , flexible, drop tank air supply (Mod. 1402) ...						1	—	C		P.3
5716	E.B7.61.83	PIPE , flexible, air cooling for 2-speed generator (Pre-Mod. 3460)						1	—	C		
39472	E.B7.61.133	PIPE , flexible, air cooling for 2-speed generator (Mod. 3460)						1	—	C		
12631	E.B7.50.105	PIPE , assembly, continuation wheel case breather ½" o/d. x 20 SWG (Mod. 1270)						1	L.54	C		
5717	E.B7.75.109	PIPE , flexible, cabin pressure system						1	—	C		P.3
28F/17675	BELLS ASBESTOS											
	AS.5402	RING , sealing, anti-icing pipe connection						2	—	C		P.3
1446	EEAS.66/5	RING , clamping						4	L.72	C		
	DUNLOP											
12326	DAS.393/24/3	SLEEVE , connecting, for wheel case breather (Mod. 1270)						2	—	C		
	E.A3.81.1105	THERMO-COUPLE, ASSEMBLY						4	—	—		
		Spares for:—										
6A/3811	†	THERMO , couple						1	—	A		
or												
6A/5452	†	TUBE , silicon, rubber, ⅝" i/d. x 16" long ...						1	Shore 75-80	C		P.3
3613												

**POWER INSTALLATION
R.A.7 ENGINE INSTALLATION, PORT**

Ref. No.	Part No.	Description	No Off	Matl Spec.	Cl. of Equip.	Plate No.
					M.R. L.M.	
	E.B7.50.31	VALVE, HOT AIR, ASSEMBLY Consisting of:—	—	—	—	
	E.E. CO. LTD. BRADFORD					
5W/400	TYPE 234	ACTUATOR	1	—	A	
27M/7683	AGS.572/A	NUT, between control tube and lever	2	—	C	
1122	EEAS.63	NUT, slotted, control rod and levers	2	—	C	
27V/4282	TEDDINGTON FKH/A/16	VALVE, 1½"	1	—	A	P.3

Pages 847 to 856 not issued

**POWER INSTALLATION
R.A.7 ENGINE INSTALLATION, STARBOARD**

Ref. No.	Part No.	Description	No. Off	Matl Spec.	Cl. of Equip.	Plate No.
					M.R. L.M.	
	E.A6.00.14	RAT, ENGINE INSTALLATION, STARBOARD, ASSEMBLY	—	—	—	
		Spares for:—				
5706	E.B7.75.117	ADAPTOR , screwed, cabin pressure system, connection at engine	1	S.91	C	P.3
220	EEAS.12/1	BOLT , engine, control rod end	2	—	C	
5707	C.4205/1½-1½B	CLAMP , pipe toggle, at hot air valve	2	—	C	
18634	E.B7.50.85	CONNECTION , banjo fuel drain	1	—	C	
1395	E.A1.47.519	CONTROL , tube, engine throttle	1	—	C	
6826	E.A6.47.145	CONTROL , tube, engine shut off cock	1	—	C	
5719	E.B7.50.33	ELBOW , pipe, assembly, hot air valve to engine ...	1	—	B	
	E.B6.20.182	ENGINE, VENTING SYSTEM	—	—	—	
		Spares for:—				
	E.B6.20.172	AIR INTAKE, FOR ZONE 2, COOLING IN INNER WING, LEADING EDGE, ASSEMBLY (PRE-MOD. 2393-2155-2197)	—	—	—	
		Spares for:—				
18556	E.B6.20.213	CLIP , air intake, pipe support at rib 3 ...	1	L.72	C/MR	
18548	E.B6.20.174	DUCT , air entry	1	—	C/MR	
4762	E.A3.57.185	HOSE , rubber pipe connection	1	—	C/MR	
18551	E.B6.20.178	PIPE , air intake, continuation	1	—	C/MR	
18549	E.B6.20.175	PLATE , doubling	1	L.72	C/MR	
18863	EEAS.66/9	RING , clamping	2	L.72	C/MR	
	E.B6.20.960	AIR INTAKE, FOR ZONE 2, COOLING IN INNER WING, LEADING EDGE, ASSEMBLY (MOD. 2393-2155-2197)	—	—	—	
		Spares for:—				
38076	E.B6.20.961	BRACKET , support, for pipe air continuation to inboard engine rib	1	L.72	MR	
13213	E.A9.20.3241	DUCT , air entry	1	L.59	C	
12349	E.A9.20.1025	HOSE , rubber pipe, connection	2	—	C	
12352	E.A9.20.1018	PIPE , air intake continuation to inboard engine rib connection	1	L.59	C	
27502	E.B7.20.427	PLATE , reinforcing, air intake	1	L.72	MR	
18540	E.B6.20.127	DUCT , air spill pipe, inner wing (Pre-Mod. 2393-2155-2197)	1	L.59	C/MR	
18541	E.B6.20.129	DUCT , air spill pipe, R.H., inner wing	1	L.59	C/MR	
18542	E.B6.20.130	DUCT , air spill pipe, R.H., inner wing	1	L.59	C/MR	
18543	E.B6.20.131	DUCT , air spill pipe, L.H., outer wing	1	L.59	C/MR	
18544	E.B6.20.132	DUCT , air spill pipe, L.H., outer wing	1	L.59	C/MR	
18546	E.B6.20.134	DUCT , air spill pipe, outer wing	1	L.59	C/MR	
13211	E.B7.20.289	DUCT , air spill pipe, L.H., on inboard engine rib (Mod. 2393-2155-2197)	1	L.59	C	
13212	E.B7.20.291	DUCT , air spill pipe, R.H., on inboard engine rib (Mod. 2393-2155-2197)	1	L.59	C	
4762	E.A3.57.185	HOSE , rubber	2	—	C/MR	P.3
18552	E.B6.20.183	PIPE , air intake, continuation inner wing (Pre-Mod. 2393-2155-2197)	1	L.56	C/MR	
	E.B6.50.22	PIPE, ENGINE VENT, GROUND RUNNING, ASSEMBLY	—	—	—	
		Spares for:—				
18629	E.B6.50.29	CLIP , for pipe mounting bracket	2	L.72	C	
18630	E.B6.50.31	CLIP , for pipe mounting bracket	2	L.72	C	
18628	E.B6.50.24	PIPE	1	L.54	C	
18863	EEAS.66/9	RING , clamping	4	—	C	

**POWER INSTALLATION
R.A.7 ENGINE INSTALLATION, STARBOARD**

Ref. No.	Part No.	Description	No. Off	Matl Spec.	Cl. of Equip.	Plate No.
					M.R. L.M.	
		1 2 3 4 5 6				
	E.B6.20.506	SHROUD, FORWARD, ENGINE VENT, ASSEMBLY	—	—	—	
		Spares for:—				
18565	E.B6.20.509	BRACKET , angle, shroud support	12	—	C	
27617	E.B6.20.504	SHROUD , heat, forward (Supplied to Drg. No. E.A3.00.866)	1	—	C	
	E.B6.20.511	SHROUD, REAR, ENGINE VENT, ASSEMBLY ...	—	—	—	
		Spares for:—				
18569	E.B6.20.519	BRACKET , shroud, fixing	4	DTD.124	C	
18570	E.B6.20.521	BRACKET , shroud, fixing	4	DTD.124	C	
18571	E.B6.20.523	BRACKET , shroud, fixing	4	DTD.124	C	
18572	E.B6.20.525	BRACKET , shroud, fixing	4	DTD.124	C	
18566	E.B6.20.513	SHROUD	1	DTD.711	C	
18567	E.B6.20.515	SHROUD	1	DTD.711	C	
16448	E.B7.50.5025	FITTING , end, hot air valve	1	DTD.683	C	
6521	E.B7.50.73	GASKET , for shut off valve end fitting	1	L.59	C	P.3
6522	E.B7.50.75	GASKET , for shut off valve elbow	1	L.59	C	P.3
5710	E.B7.75.119	GASKET , for anti-icing and cabin pressure pipe engine connection	2	L.59	C	P.3
5709	E.B7.75.115	GASKET , for wheel case breather, pipe engine connection	1	L.59	C	P.3
5720	E.B7.50.21	HOSE , metallic, from hot air valve to anti-icing pipe	1	—	C	
18626	E.A6.50.869	PIPE , assembly, fuel drain (Pre-Mod. 4726)	1	DTD.323	C	
	E.A3.50.37	PIPE, FUEL DRAIN, INSTALLATION (MOD. 4726)	—	—	—	
		Spares for:—				
5K/0011351	SP.93/A12	GROMMET	2	—	C	
	E.A3.50.35	PIPE , assembly, drain	1	DTD.5019	—	
19846	E.B6.75.83	PIPE , flexible, drop tank, air supply (Mod. 1402) ...	1	N.501	C	
1383	E.A1.57.15	PIPE , flexible, engine fuel (Dunlop Part No. AHM.541/21'0)	1	WH2/1	C	P.3
1384	E.A1.57.16	PIPE , flexible, engine fuel (Dunlop Part No. AHM.542/21'0)	1	WH2/1	C	P.3
1382	E.A1.60.58	PIPE , flexible, fire protection system (Dunlop Part No. AHO.24509/10'75)	1	WH2/1	C	P.3
12353	E.B7.50.134	PIPE , flanged, engine wheel case breather, 1/2" o/d. x 20 SWG (Mod. 1270)	1	T.26	C	P.3
12632	E.B7.50.106	PIPE , assembly, continuation wheel case breather, 1/2" o/d. x 20 SWG (Mod. 1270)	1	L.54	C	
6970	E.B7.61.85	PIPE , flexible, air cooling for 2 speed generator (Pre-Mod. 3460)	1	—	C	
39473	E.B7.61.135	PIPE , flexible, air cooling, 2 speed generator (Mod. 3460)	1	—	C	
5717	E.B7.75.109	PIPE , flexible, cabin pressure system	1	—	C	P.3
28F/17675	BELLS ASBESTOS AS.5402	RING , sealing, anti-icing pipe connection	2	—	C	P.3
1446	EEAS.66/5	RING , clamping	4	L.72	C	
	DUNLOP					
12326	DAC393/24/3	SLEEVE , connection, for wheel case breather (Mod. 1270)	2	—	C	
	E.A3.81.1105	THERMO-COUPLE, ASSEMBLY	4	—	—	
		Spares for:—				
6A/3811 or 6A/5452 3613	†	THERMO-COUPLE	1	—	A	
	†					
	†	TUBE , silicon rubber, 3/8" i/d., 16" long	1	Shore 75-80	C	P.3

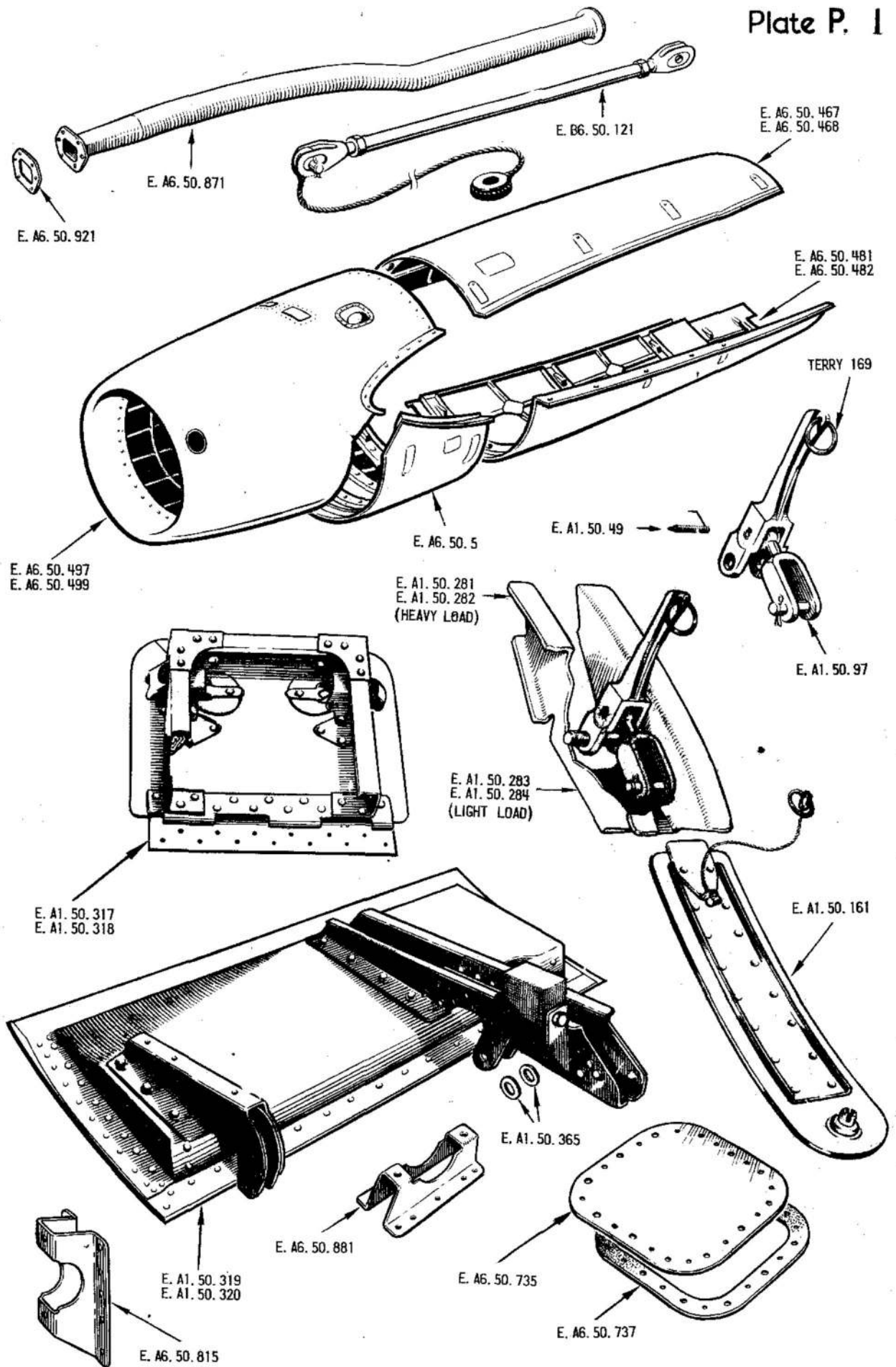
**POWER INSTALLATION
R.A.7 ENGINE INSTALLATION, STARBOARD**

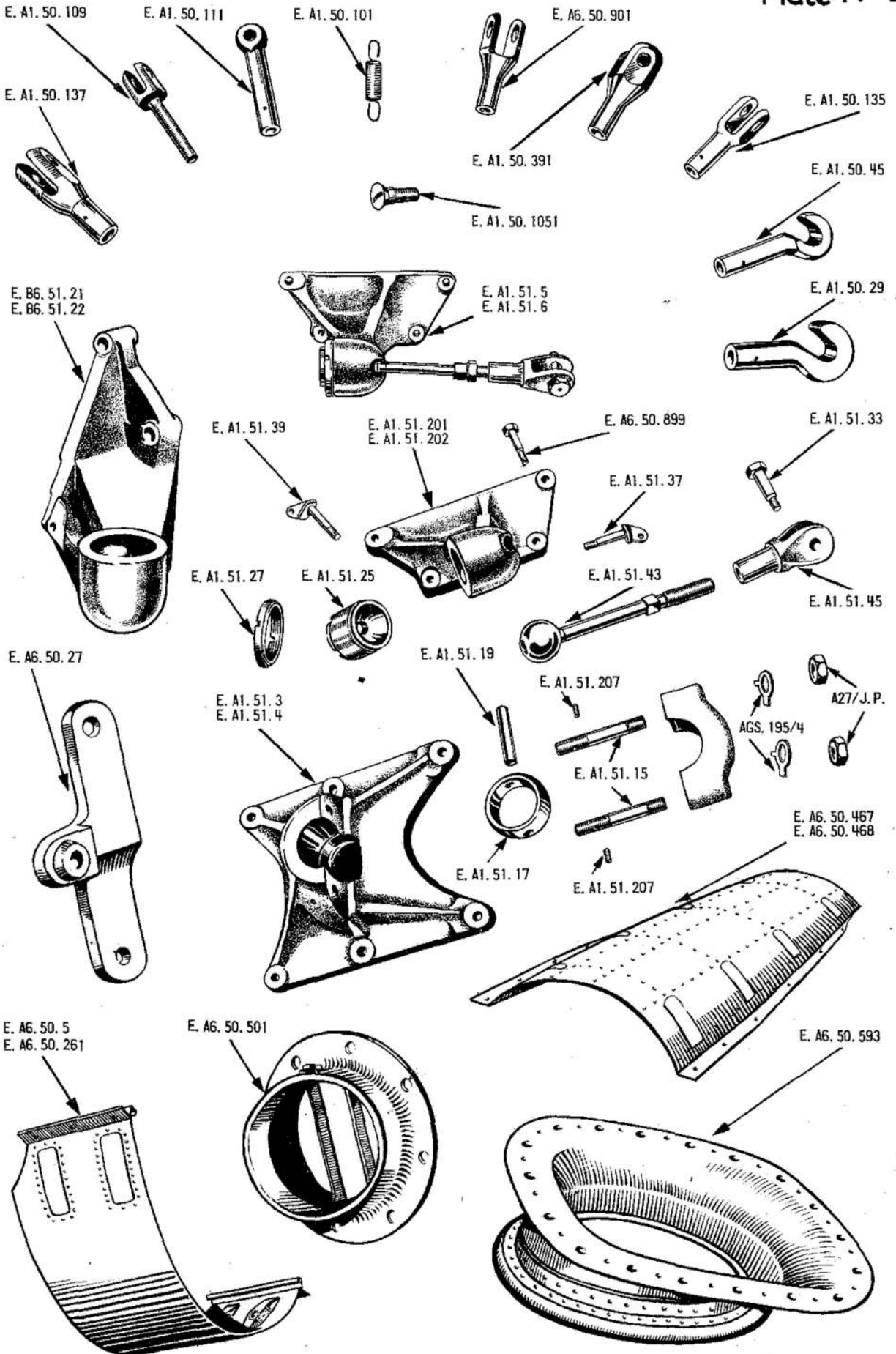
Ref. No.	Part No.	Description	No. Off	Matl Spec.	Cl. of Equip.	Plate No.
					M.R. L.M.	
	E.B7.50.31	VALVE, HOT AIR, ASSEMBLY Consisting of:—	—	—	—	
5W/400	E.E. CO. LTD. BRADFORD Type 234	ACTUATOR	1	—	A	
27M/7683	AGS.572/A	NUT between control tube and lever	2	—	C	
1122	EEAS.63	NUT, slotted, control rod and levers	2	—	C	
27V/4282	TEDDINGTON FKH/A/16	VALVE	1	—	A	P.3

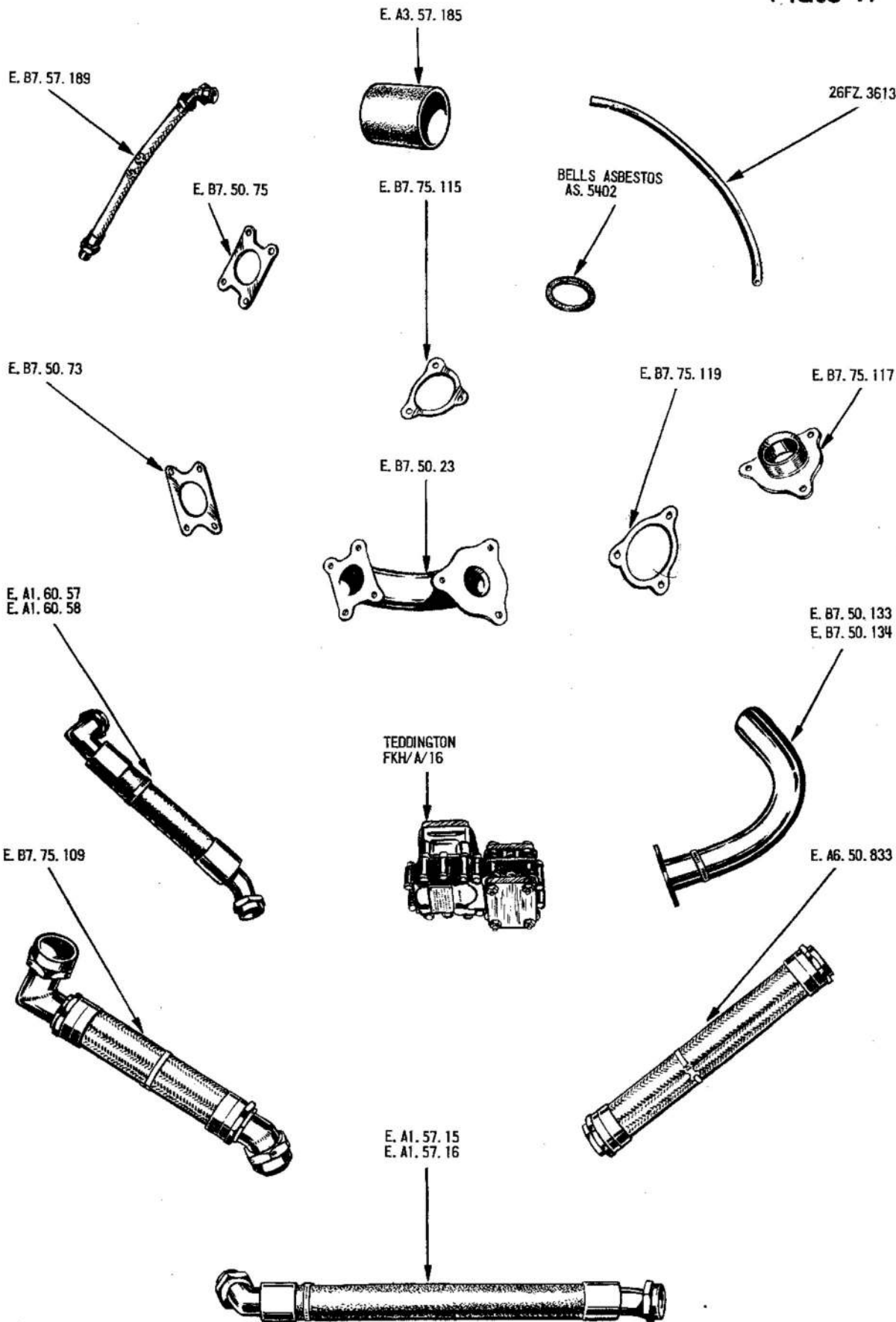
Pages 861 to 870 not issued

**POWER INSTALLATION
R.A.7 ENGINE INSTALLATION, PORT AND STARBOARD**

Ref. No.	Part No.	Description	No. off	Matl. Spec.	Cl. of Equip.	Plate No.
					M.R. L.M.	
<p align="center">SUMMARY OF STOCK ITEMS USED ON R.A.7 ENGINE, INSTALLATION, PORT AND STARBOARD, ASSEMBLY</p>						
28D/1010658	A25/1B	Bolt, 4 BA		C
28D/9436920	A25/1C	Bolt, 2 BA		C
28D/9133011	A25/2C	Bolt, 2 BA		C
28D/1200129	A25/4C	Bolt, 2 BA		C
28D/9133013	A25/5C	Bolt, 2 BA		C
28G/3813	AGS.797/D	Eye-bolt, 2 BA		C
28M/9403519	A27/BP	Nut, 4 BA		C
28M/13121	A27/CS	Nut, 2 BA		C
28M/1011467	A27/ES	Nut, 1/2" BSF		C
28M/10287	AGS.2001/B/1	Nut, stiff, 4 BA		C
28M/10288	AGS.2001/C/1	Nut, stiff, 2 BA		C
28P/9429528	SP.9/C8	Pin, split, 1/8" dia. x 1" long		C
28W/9419465	SP.13/B	Washer		C
28W/9419402	SP.13/C	Washer		C
28W/9418921	SP.13/E	Washer		C
28W/9419475	SP.13/C	Washer		C
28W/9416642	SP.47/B	Washer		C







This file was downloaded
from the RTFM Library.

Link: www.scottbouch.com/rtfm

Please see site for usage terms,
and more aircraft documents.

