

MISCELLANEOUS
ATTACHMENT DETAILS

Ref. No.	Part No.	Description	No. off	Matl. Spec.	Cl. of Equip.		Plate No.
					M.R.	L.M.	
	E.B6.00.21	WING TO FUSELAGE ATTACHMENT DETAILS, PORT	—	—	—	—	
		Spares for:—					
2089	E.A3.20.135	Block, sealing, wing to fuselage joint	1	Linatex Rubber	C		MA.1
2090	E.A1.20.2897	Block, sealing, wing to fuselage joint	1	Linatex Rubber	C		MA.1
384	E.A1.20.2899	Block, sealing, wing to fuselage joint	1	Linatex Rubber	C		MA.1
387	E.A1.20.1101	Bolt, main pick-up, wing to fuselage	2	DTD.473	C		MA.1
385	E.A1.20.2277	Bolt, special, wing to fuselage attachment	2	DTD.473	C		MA.1
28D/12515	A25/10C	Bolt, 2 BA, hex. head, 1"45 long	1	—	C		MA.1
28D/13586	A25/10N	Bolt, 1/2" BSF, 1"8 long	1	—	C		MA.1
28D/12292	AGS.571/906	Bolt, shear, attachment main spar to fuselage at frame 21	7	—	C		MA.1
4983	E.A1.11.129	Collar, special, rear spar to fuselage	1	DTD.126A	B/MR		
2091	E.A3.20.573	Gusset, top, main spar, closing panel	1	—	C		MA.1
2093	E.A3.20.575	Gusset, bottom, main spar, closing panel	1	—	C		MA.1
28M/13259	A27/NS	Nut, 1/2" BSF, slotted	1	—	C		MA.1
28M/13590	A27/SS	Nut, 3/4" BSF, slotted	2	—	C		MA.1
28M/13276	A27/WS	Nut, 1" BSF, slotted	2	—	C		MA.1
28M/7748	AGS.572/J	Nut, 5/8" BSF, thin, slotted	7	—	C		MA.1
28M/10288	AGS.2001/C/1	Nut, stiff, 2 BA	72	—	C		MA.1
28M/10328	AGS.2002/C/1	Nut, stiff, 2 BA	1	—	C		MA.1
386	E.A1.20.2275	Pad, special, wing attachment bolt	2	S.11	C		MA.1
4984	E.A1.11.127	Pin, special, rear spar to fuselage	1	S.11	C/MR		
28P/12351	SP9/E8	Pin, split, 3/8" dia. x 1" long	7	—	C		MA.1
28P/9429652	SP9/E10	Pin, split, 3/8" dia. x 1 1/4" long	1	—	C		MA.1
28P/12721	SP9/H16	Pin, split, 3/8" dia. x 2" long	2	—	C		MA.1
28P/12366	SP9/K20	Pin, split, 3/8" dia. x 2 1/2" long	2	—	C		MA.1
1025	EEAS.1/1C	Screw, 2 BA, c'sk. head, 120°	28	—	C		MA.1
1026	EEAS.1/1 1/2 C	Screw, 2 BA, c'sk. head, 120°	407	H.T.S.	C		MA.1
1468	EEAS.1/2C	Screw, 2 BA, c'sk. head, 120°	14	H.T.S.	C		MA.1
1027	EEAS.1/2 1/2 C	Screw, 2 BA, c'sk. head, 120°	23	H.T.S.	C		MA.1
1028	EEAS.1/3C	Screw, 2 BA, c'sk. head, 120°	24	H.T.S.	C		MA.1
1565	EEAS.1/3 1/2 C	Screw, 2 BA, c'sk. head, 120°	32	H.T.S.	C		MA.1
1029	EEAS.1/4C	Screw, 2 BA, c'sk. head, 120°	44	H.T.S.	C		MA.1
1425	E.A3.20.689	Strip, closing, upper, aft of spar (supplied undrilled and with trim allowance)	1	—	C		MA.2
1427	E.A3.20.691	Strip, closing, lower, aft of spar (supplied undrilled and with trim allowance)	1	—	C		MA.2
4985	E.A1.11.131	Washer, distance, rear spar to fuselage	1	L.40	C/MR		
2095	E.A1.20.1335	Washer, special, main pick-up bolt	2	L.72	C		MA.1
2096	EEAS.27/16GU	Washer, 14 SWG	72	DTD.124	C		MA.1
28W/3089	AGS.163/C	Washer, 2 BA, spring	36	—	C		MA.1
28W/9419491	SP16/N	Washer, 1/2" BSF, plain	1	—	C		MA.1
28W/9419480	SP15/P	Washer, 3/8" BSF, plain	7	—	C		MA.1
28W/9419482	SP15/S	Washer	1	—	C		MA.1
28W/14886	SP55/C	Washer, 2 BA, spring	38	—	C		

MISCELLANEOUS
ATTACHMENT DETAILS

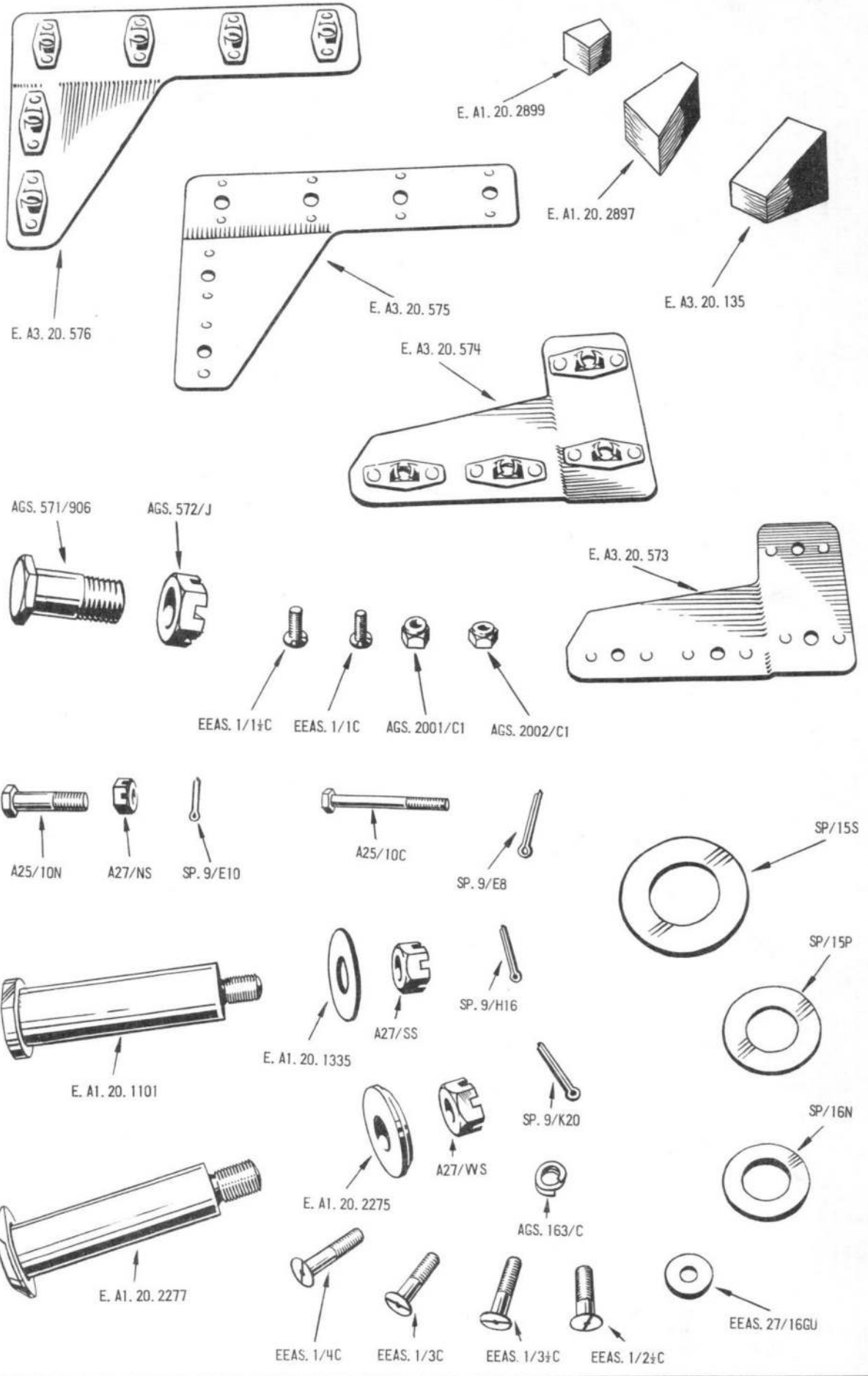
Ref. No.	Part No.	Description	No. off	Matl. Spec.	Cl. of Equip.	Plate No.
					M.R. L.M.	
	E.B6.00.22	WING TO FUSELAGE ATTACHMENT DETAILS, STARBOARD Spares for this assembly are identical with those for port assembly E.B6.00.21 on page 1039, except for the following deletions and additions Delete:—	—	—	—	
2091	E.A3.20.573	Gusset, top, main spar, closing panel	1	—	C	MA.1
2093	E.A3.20.575	Gusset, bottom, main spar, closing panel	1	—	C	MA.1
1425	E.A3.20.689	Strip, closing, upper, aft of spar (supplied undrilled and with trim allowance)	1	—	C	MA.2
1427	E.A3.20.691	Strip, closing, lower, aft of spar (supplied undrilled and with trim allowance)	1	—	C	MA.2
		Add:—				
2092	E.A3.20.574	Gusset, top, main spar, closing panel	1	—	C	MA.1
2094	E.A3.20.576	Gusset, bottom, main spar, closing panel	1	—	C	MA.1
1426	E.A3.20.690	Strip, closing, upper, aft of spar (supplied undrilled and with trim allowance)	1	—	C	MA.2
1428	E.A3.20.692	Strip, closing, lower, aft of spar (supplied undrilled and with trim allowance)	1	—	C	MA.2
	E.A9.00.111	FRONT FUSELAGE TO CENTRE FUSELAGE ATTACHMENT DETAILS Consisting of:—	—	—	—	
392	E.A1.10.1207	Bolt, special attachment	113	S.11	C	MA.2
393	E.A1.10.1209	Bolt, special attachment	58	S.11	C	MA.2
27645	E.A9.10.4135	Bolt, special attachment	3	—	—	
28D/9436920	A25/1C	Bolt, 2 BA, hex. head, 0"55 long	18	—	C	MA.2
28D/12513	A25/2C	Bolt, 2 BA, hex. head, 0"65 long	13	—	C	MA.2
28D/13661	A25/15N	Bolt, 1/2" BSF, 2"3 long	4	—	C	MA.2
33C/1138	†	Cement, Bostik	QR	—	C	
28M/10294	AGS.2001/N/1	Nut, stiff, 1/2" BSF	4	—	C	MA.2
28W/3090	AGS.163/D	Washer, 1/4" BSF, spring	113	—	C	MA.2
28W/3091	AGS.163/E	Washer, 3/8" BSF, spring	61	—	C	MA.2
28W/9419475	SP15/C	Washer, 2 BA, plain	31	—	C	MA.2
28W/9419479	SP15/N	Washer, 1/2" BSF, plain	4	—	C	
5484	E.A1.10.2713	Washer, special	4	—	C	
	E.B6.00.25	CENTRE FUSELAGE TO REAR FUSELAGE ATTACHMENT DETAILS Consisting of:—	—	—	—	
28D/12543	A25/6E	Bolt, 1/4" BSF, hex. head, 1"1 long	48	—	C	
28D/12633	A25/7E	Bolt, 1/4" BSF, hex. head, 1"2 long	8	—	C	
28D/12569	A25/10E	Bolt, 1/4" BSF, hex. head, 1"5 long	6	—	C	
28D/12545	A25/13E	Bolt, 1/4" BSF, hex. head, 1"8 long	24	—	C	
28D/12639	A25/6G	Bolt, 3/16" BSF, hex. head, 1"15 long	16	—	C	
28D/12816	A25/7G	Bolt, 3/16" BSF, hex. head, 1"25 long	8	—	C	
28D/12820	A25/13G	Bolt, 3/16" BSF, hex. head, 1"85 long	30	—	C	
28D/12552	A25/15G	Bolt, 3/16" BSF, hex. head, 2"05 long	12	—	C	
28D/13472	A25/16N	Bolt, 1/2" BSF, hex. head, 2"4 long	2	—	C	
28D/12834	A25/18N	Bolt, 1/2" BSF, hex. head, 2"6 long	2	—	C	
33C/1173	CS.2558	Cement	QR	—	C	

MISCELLANEOUS
ATTACHMENT DETAILS

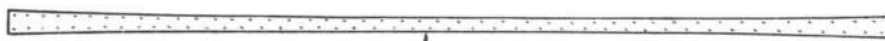
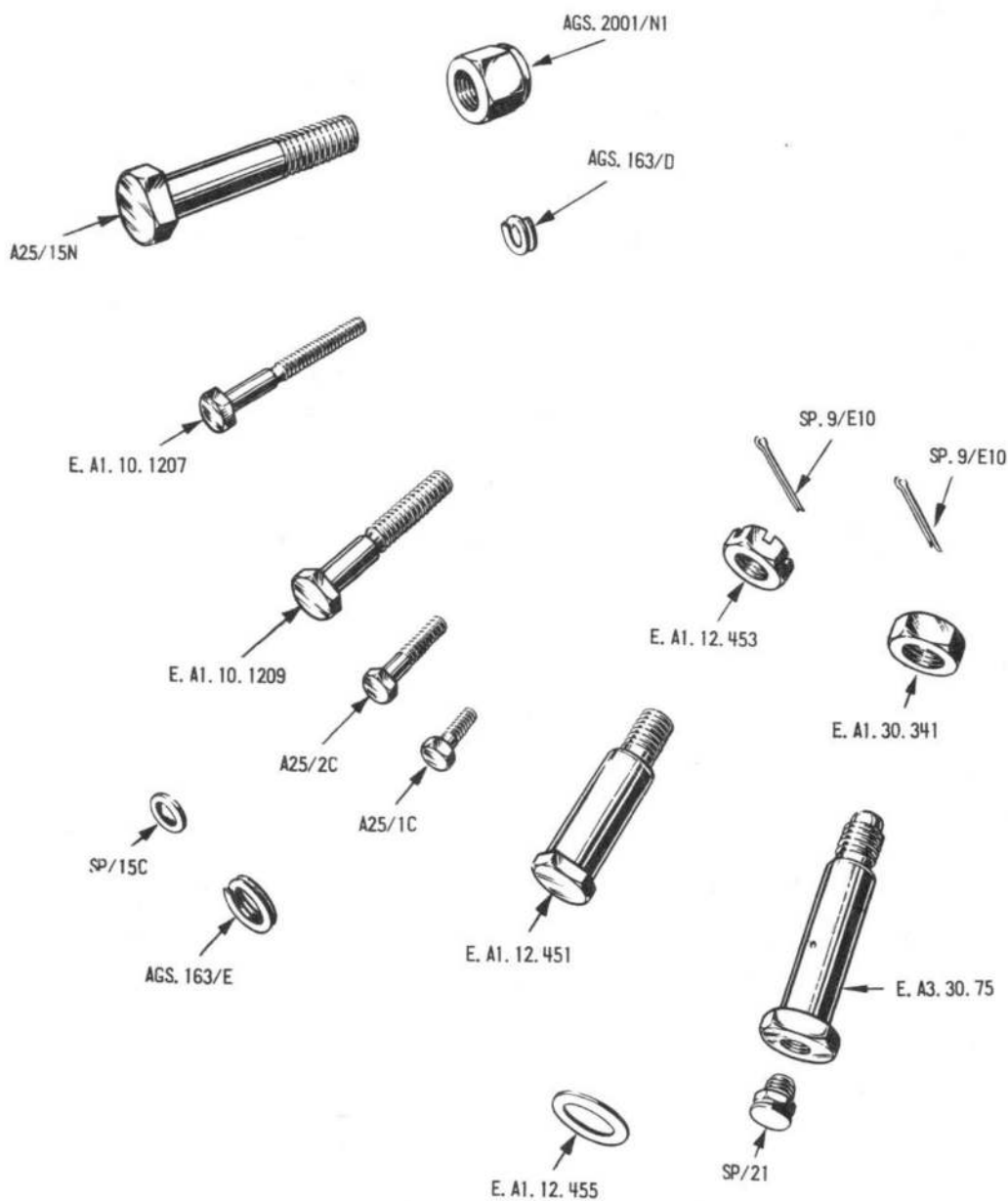
Ref. No.	Part No.	Description	No. off	Matl. Spec.	Cl. of Equip.	Plate No.
					M.R. L.M.	
		1 2 3 4 5 6				
28M/10290	AGS.2001/E/1	Nut, stiff, 1/4" BSF	90	—	C	
28M/10291	AGS.2001/G/1	Nut, stiff, 5/16" BSF	66	—	C	
28M/10294	AGS.2001/N/1	Nut, stiff, 1/2" BSF	4	—	C	
28W/9419405	SP.15/E	Washer, 1/4" BSF, plain	58	—	C	
28W/9419476	SP.15/G	Washer, 1/8" BSF, plain	16	—	C	
28W/9419479	SP.15/N	Washer, 1/2" BSF, plain	4	—	C	
5484	E.A1.10.2713	Washer, special	4	—	C	
	E.B6.00.53	TAILPLANE TO REAR FUSELAGE, ATTACHMENT DETAILS	—	—	—	
		Consisting of:—				
2751	E.A3.30.75	Bolt, special pivot, tailplane attachment, forward hinge point	2	S.97	C	MA.2
309	E.A1.12.451	Bolt, special, tailplane actuator anchor	1	S.65	C	MA.2
310	E.A1.30.341	Nut, special, tailplane attachment, forward hinge point	2	L.40	C	MA.2
311	E.A1.12.453	Nut, special, slotted, tailplane actuator anchor	1	MS	C	MA.2
28N/9796	SP.21	Nipple, lubricating	2	—	C	MA.2
28P/9429652	SP.9/E10	Pin, split, 3/32" x 1 1/4"	3	—	C	MA.2
312	E.A1.12.455	Washer, special, tailplane actuator anchor	2	L.72	C	MA.2
	E.A1.00.55	FIN TO FUSELAGE ATTACHMENT DETAILS	—	—	—	
		Consisting of:—				
313	E.A1.32.75	Bolt, special, fin attachment, port	1	DTD.473	C	MA.3
314	E.A1.32.77	Bolt, special, fin attachment, starboard	1	DTD.473	C	MA.3
28D/9436920	A25/1C	Bolt, 2 BA, hex. head, 0"55 long	10	—	C	MA.3
28D/12534	A25/9C	Bolt, 2 BA, hex. head, 1"35 long	6	—	C	MA.3
28D/8306	AS.1242/1C	Bolt, 2 BA, c'sk. head, 0"5 long	18	—	C	MA.3
28D/8307	AS.1242/2C	Bolt, 2 BA, c'sk. head, 0"6 long	36	—	C	MA.3
1029	EEAS.1/4C	Screw, 2 BA, c'sk. head, 120°	58	—	C	MA.3
1030	EEAS.1/5C	Screw, 2 BA, c'sk. head, 120°	20	—	C	MA.3
	E.A1.00.57	RUDDER TO FIN FUSELAGE ATTACHMENT DETAILS	—	—	—	
		Consisting of:—				
4730	E.A1.32.203	Bolt, special attachment, rudder to fin top hinge	2	S.11	C/MR	MA.3
4731	E.A1.32.205	Bolt, special attachment, rudder to fin top hinge	2	S.11	C/MR	MA.3
28M/13590	A27/SS	Nut, 1/4" BSF slotted	1	—	C	MA.3
28P/9429528	SP.9/C8	Pin, split, 1/16" x 1"	1	—	C	MA.3
3667	E.A3.33.219	Washer, special sealing	1	L.40	C	MA.3
	E.A1.00.59	REAR FAIRING TO FUSELAGE, ATTACHMENT DETAILS	—	—	—	
		Consisting of:—				
28D/12520	A.25/4E	Bolt, 1/8" BSF, hex. head, 0"9 long	2	—	C	MA.3
28M/12930	A27/ES	Nut, 1/4" BSF, slotted	2	—	C	MA.3
28M/10290	AGS.2001/E/1	Nut, 1/4" BSF, stiff	4	—	C	MA.3
28P/9429528	SP9/C8	Pin, split, 1/16" x 1"	2	—	C	MA.3
1028	EEAS.1/3C	Screw, 2 BA, c'sk. head, 120°	4	—	C	MA.3
28W/9419487	SP16/E	Washer, 1/4" BSF, plain	2	—	C	MA.3

**MISCELLANEOUS
ATTACHMENT DETAILS**

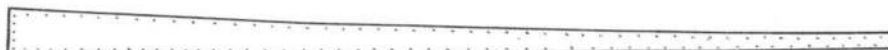
Ref. No.	Part No.	Description	No. off	Matl. Spec.	Cl. of Equip.		Plate No.
					M.R.	L.M.	
	E.A1.00.63	CONTROLS TO RUDDER AND ELEVATOR ATTACHMENT DETAILS	—	—	—		
		Consisting of:—					
67	EEAS.13/1	Bolt , special connecting, control rod to rudder ...	2	—	C		MA.3
68	EEAS.14	Bush , bearing, connecting rod	2	—	C		MA.3
3569	EEAS.63/E	Nut , slotted, control tube connecting bolt	2	S.96	C		MA.3
3570	EEAS.127	Piece , distance, control tube connection	2	S.96	C		MA.3
28P/9429528	SP9/C8	Pin , split, $\frac{1}{8}$ " x 1"	2	—	C		MA.3
	E.A1.00.81	DROP TANK TO WING ATTACHMENT DETAILS, PORT (see page 775)	—	—	—		
	E.A1.00.82	DROP TANK TO WING ATTACHMENT DETAILS, STARBOARD (see page 787)	—	—	—		



MISCELLANEOUS ATTACHMENTS

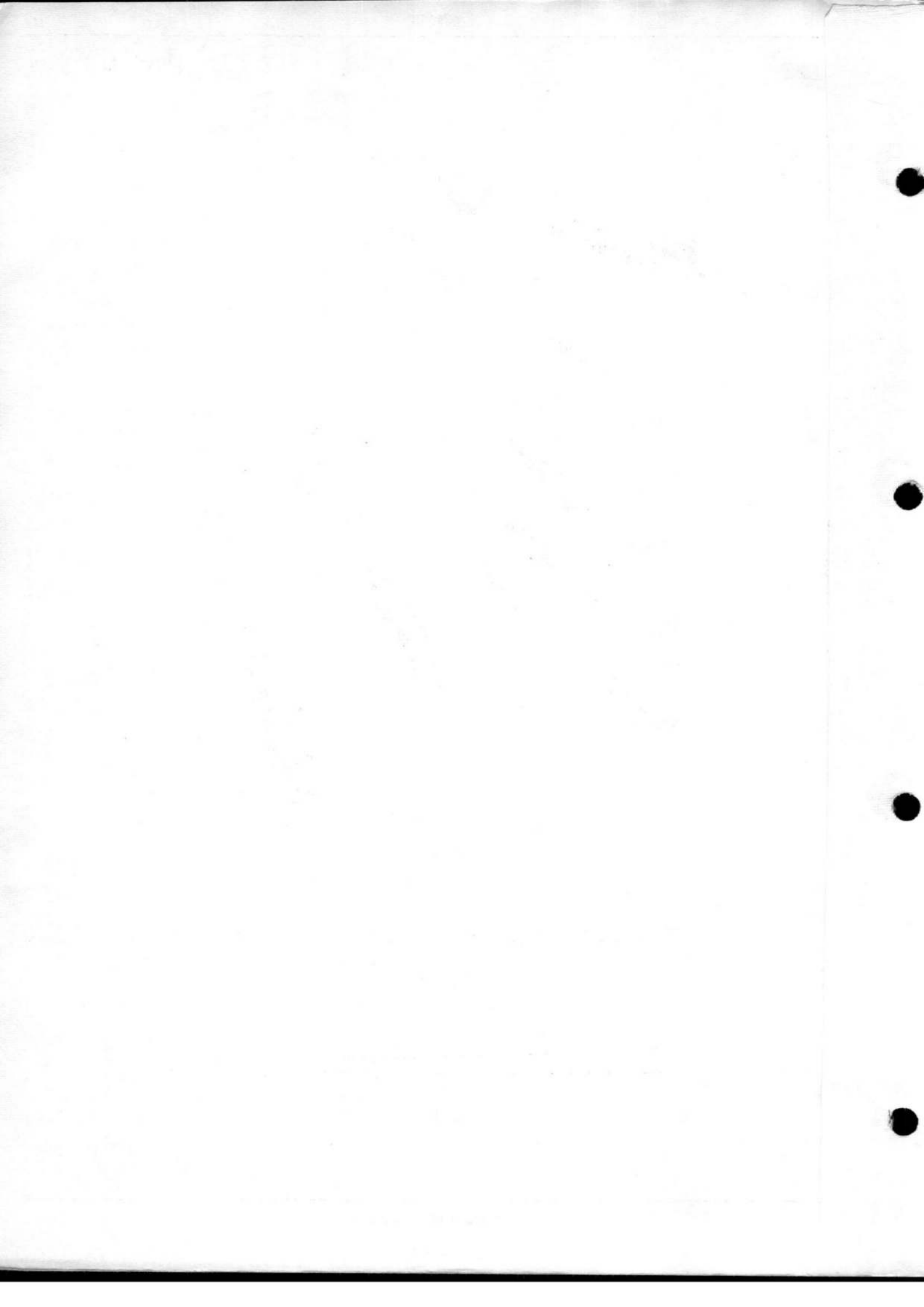


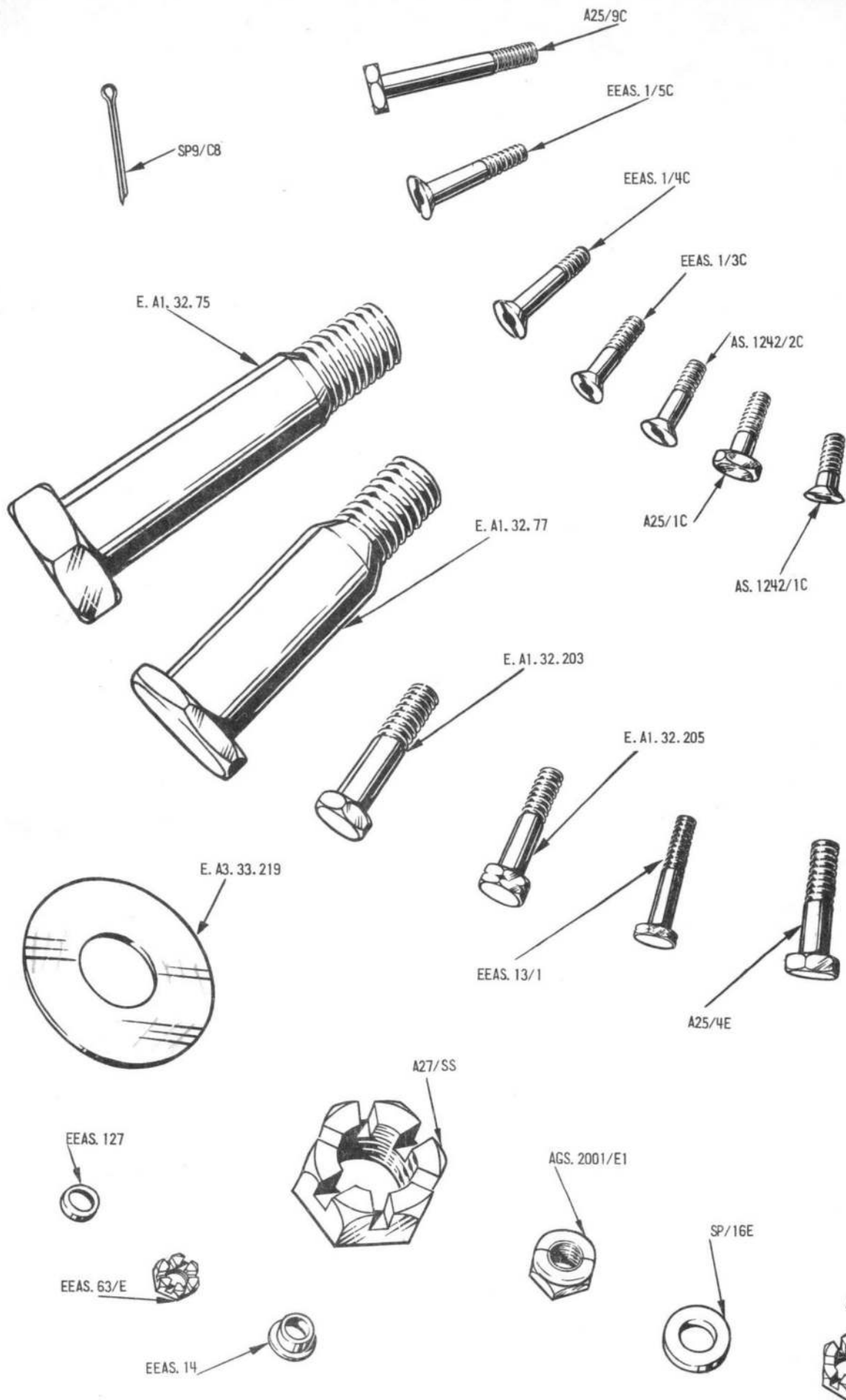
E. A3. 20. 691
E. A3. 20. 692



E. A3. 20. 689
E. A3. 20. 690

MISCELLANEOUS ATTACHMENTS





Pages ~~1045~~ to ~~1054~~ not issued

1043 to 1054

1945

This file was downloaded
from the RTFM Library.

Link: www.scottbouch.com/rtfm

Please see site for usage terms,
and more aircraft documents.

