

**POWER INSTALLATION
COWLING, ENGINE, PORT**

Ref. No.	Part No.	Description	No. off	Matl. Spec.	Cl. of Equip.	Plate No.
					M.R. L.M.	
	E.A6.50.493	COWLING, ENGINE, PORT, ASSEMBLY	—	—	—	
		Spares for:—				
626	E.A1.50.103	CLIP , toggle, hook spring	2	L.72	C	
627	E.A1.50.105	CLIP , toggle, hook spring	2	L.72	C	
5689	E.A6.50.497	COWL, FRONT, GROUP	1	—	A	P.1
		(Supplied with trim allowance and pilot holes drilled for spares purposes to Drg. E.B6.00.129)				
		Spares for:—				
38671	E.A3.00.957	AIR INTAKE, ASSEMBLY (E.A6.50.557)	1	—	B/MR	
		Spares for:—				
	E.A6.50.519	FRAME, NO. 1, ASSEMBLY	1	—	—	
		Spares for:—				
	E.A6.50.551	RING , sealing (Make from EEAS.140, Ref. 20518)	1	—	LM	
25835	E.A6.50.967	ANGLE , duct extraction (Mod. 2114)	1	—	C	
25839	E.A6.50.977	ANGLE , duct extraction (Mod. 2114)	1	—	C	
5691	E.A6.50.815	BRACKET , pipe anti-icing	1	L.72	C	P.1
16443	E.A6.50.819	CLIP , top, special anti-icing pipe	2	L.72	C/MR	
16444	E.A6.50.821	CLIP , bottom, special anti-icing pipe	2	L.72	C/MR	
25569	E.A6.50.957	COVER , access, P.V. ram (Mod. 1469)	1	L.72	C	
16433	E.A6.50.787	DUCT , extractor, outboard (Pre-Mod. 2114)	1	—	B	
16434	E.A6.50.789	DUCT , extractor, outboard (Pre-Mod. 2114)	1	—	B	
25837	E.A6.50.971	DUCT , extractor (Mod. 2114)	2	S.3	B	
16377	E.A6.50.511	LAND , nut ring, starter exhaust	1	—	C	
5690	E.A6.50.735	PANEL , access, bleed valve	1	—	C	P.1
20809	E.A6.50.949	PIPE, ANTI-ICING, ASSEMBLY (MOD. 1473)	1	—	B	P.1
		Spares for:—				
5693	E.A6.50.921	GASKET , air duct	1	Bestobell M.4	C	P.1
1025	EEAS.1/1C	SCREW , 2 BA	2	H.T.S.	C	
25836	E.A6.50.969	PLATE , external doubler	2	—	MR	
25838	E.A6.50.975	SPRING , duct, angle mounting bolt (Mod. 2114)	6	DTD.215	C	
17545	E.A6.50.481	COWL, BOTTOM, REAR (LESS U/C COWL DOOR) GROUP (PRE-MOD. 2545)	1	—	A	P.1
		Supplied with trim allowance for spares purposes to Drg. E.B6.00.133)				
		Spares for:—				
4178	E.A1.50.65	BRACKET , forward hinge	1	DTD.683	C/MR	
4171	E.A1.50.67	BRACKET , aft hinge	1	DTD.683	C/MR	
	E.A6.50.483	COWL, BOTTOM, REAR, ASSEMBLY	—	—	—	
		Spares for:—				
17710	E.B6.50.57	CLIP , pipe	1	—	C	
3815	E.A1.50.872	DUCT	1	—	C	
15075	E.A1.50.1591	DUCT	1	—	C	
15066	E.A1.50.975	FUNNEL , assembly, air ducts	2	—	C	
3821	E.A1.50.1523	OUTLET , drain	1	—	C	
17708	E.B6.50.55	PIPE	1	—	C	
5182	E.A1.50.1601	PLATE , engine sump drainage pipe retaining	1	—	C	

**POWER INSTALLATION
COWLING, ENGINE, PORT**

Ref. No.	Part No.	Description	No. off	Matl. Spec.	Cl. of Equip.		Plate No.
					M.R.	L.M.	
		1 2 3 4 5 6					
20626	E.A6.50.923	SEAL, rubber (Make from EEAS.157, Ref. 17745)	QR	—	LM		
	EEAS.120	SEAL, rubber	2	—	C		
37413	E.B6.50.129	SEAL, $\frac{1}{8}$ " thick (Make from Ref. 32C/728) ...	QR	Neoprene	LM		
	E.B6.50.143	SEAL, $\frac{1}{8}$ " thick (Make from Ref. 32C/728) ...	2	Neoprene	LM		
5014	E.A6.50.991	SPRING, drain outlet (Mod. 2670) ...	1	—	C		
5015	E.A1.50.1603	SPRING, drain outlet (Pre-Mod. 2670) ...	1	—	C		
3036	E.A1.50.981	SPRING, air duct outlet funnel ...	2	—	C		
3038	E.A1.50.317	DOOR, access, in bottom rear cowl ...	1	—	C		P.1
	E.A1.50.319	DOOR, UNDERCARRIAGE COWL, ASSEMBLY (Supplied with trim allowance all round for spares purposes) Spares for:—	1	—	C		P.1
6149	E.A1.50.1075	BLOCK, rubber, aft, half hinge ...	1	—	C		
15026	E.A1.50.315	DOOR, access, igniter plug ...	2	—	C		
633	E.A1.50.281	FASTENER, TOGGLE, GROUP ... Spares for:—	2	—	C		P.1
16312	E.A1.50.95	HANDLE, TOGGLE FASTENER, GROUP ... Spares for:—	1	—	C/MR		
29H/4100	TERRY 169/1"	RING, split ...	1	—	C		P.1
635	E.A1.50.49	SPRING, 19 SWG ...	1	Spring Steel	C		P.1
16313	E.A1.50.155	PIN, special stud ...	2	S.11	C/MR		
634	E.A1.50.282	FASTENER, TOGGLE, GROUP ... Spares for this group are identical with those for group Part No. E.A1.50.281	2	—	C		P.1
636	E.A1.50.283	FASTENER, TOGGLE, GROUP ... Spares for:—	1	—	C		P.1
7133	E.A1.50.97	HANDLE, TOGGLE FASTENER, GROUP ... Spares for:—	1	—	C		P.1
28E/9153406	TERRY 169/1"	RING, split ...	1	—	C		P.1
635	E.A1.50.49	SPRING, 19 SWG ...	1	Spring Steel	C		P.1
17661	E.A1.50.157	PIN, special stud ...	2	S.11	C/MR		
637	E.A1.50.284	FASTENER, TOGGLE, GROUP ... Spares for this group are identical with those for group Part No. E.A1.50.281	1	—	C		P.1
28FP/120	DZUS. FJ.5/60DS	FASTENER ...	5	—	C		
28FP/122	DZUS. FJ.5/70DS	FASTENER ...	4	—	C		
28FP/124	DZUS. FJ.5/80DS	FASTENER ...	1	—	C		
628	E.A1.50.161	PANEL, toggle fastener housing ...	6	—	C		P.1
6817	E.B6.50.121	ROD, TENSION, FOR UNDERCARRIAGE COWL DOOR AND CABLE CHECK, ASSEMBLY (MOD. 1013) Consisting of:—	1	—	B		P.1
17719	E.B6.50.115	CABLE, check ...	1	—	C/MR		
12201	E.B6.50.119	FORK-END ...	2	—	C		
28M/1006473	A27/CT	NUT, 2 BA ...	2	—	C		
28P/830	SP.4Y/B4	PIN, shackle ...	1	—	C		
28P/1021104	SP.90/C3	PIN, split ...	1	—	C		
	E.B6.50.117	ROD, connecting ...	1	—	—		

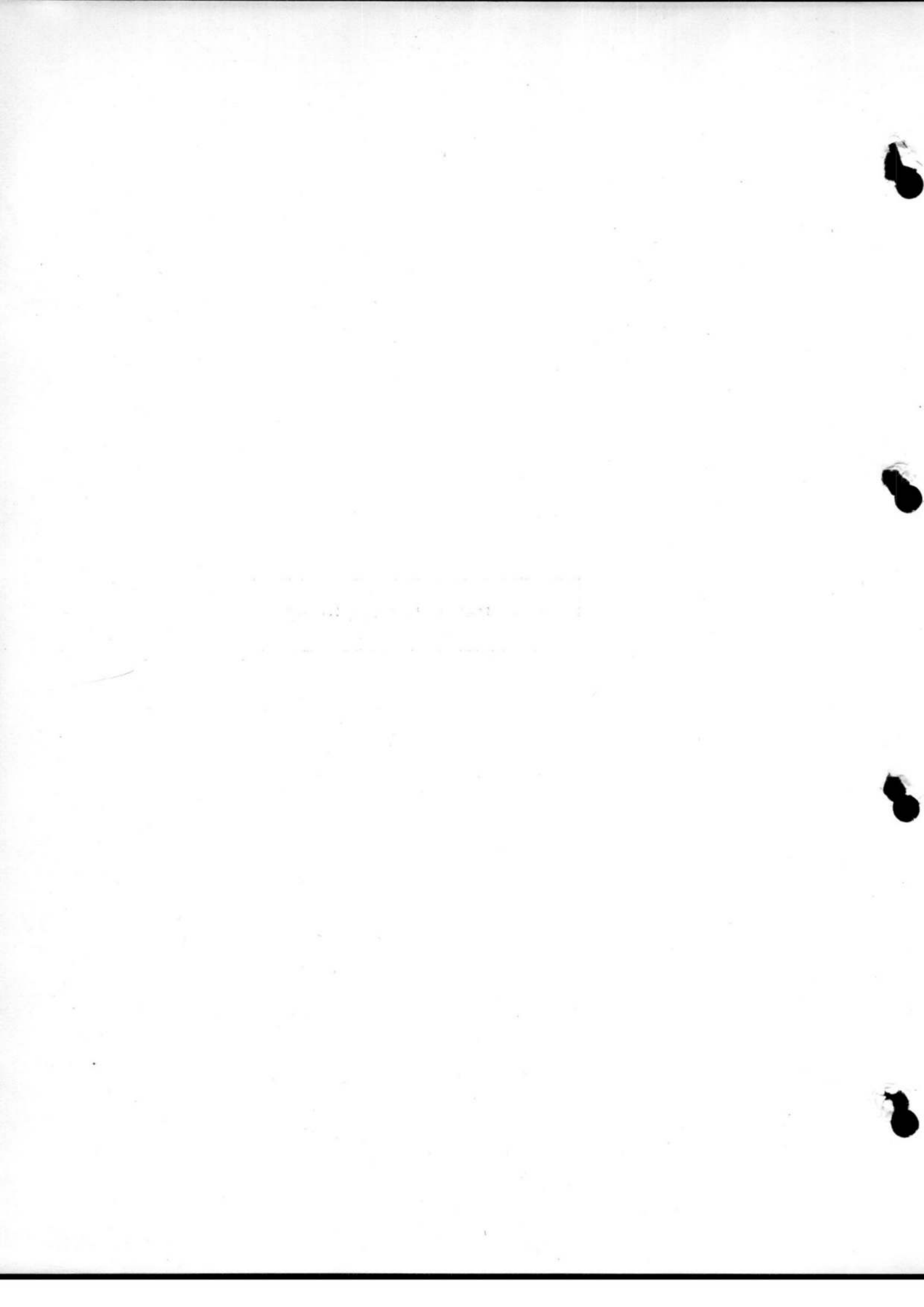
**POWER INSTALLATION
COWLING, ENGINE, PORT**

Ref. No.	Part No.	Description	No. off	Matl. Spec.	Cl. of Equip.	Plate No.
					M.R. L.M.	
27190	EEAS.27/5EU DZUS	WASHER, special	1	—	C	
28FP/341	S5/325	SPRING	6	—	C	
639	E.A1.50.365	WASHER, undercarriage door hinge thrust	2	L.46	C	P.1
6503	E.A1.50.1793	WASHER, cup, engine cowling Dzus fastener retaining (Mod. 886)	10	DTD.124A	C	
30858	E.A9.50.27	COWL, BOTTOM, REAR (LESS U/C COWL DOOR) GROUP (MOD. 2545) (Supplied to Drg. E.A9.00.497 with trim allowance for spares purposes) Spares for this group are identical with those for group Part No. E.A6.50.481 on page 1055, except for the following deletion and addition Delete:—	1	—	A	
	E.A6.50.483	COWL, BOTTOM, REAR Add:—	—	—	—	
15557	E.A9.50.29 E.A6.50.467	COWL, BOTTOM, REAR COWL, TOP, REAR, GROUP (Supplied with trim allowance for spares purposes to Drg. E.B6.00.127) Spares for:—	1	—	A	P.1-P.2
633	E.A1.50.281	FASTENER, TOGGLE, GROUP Spares for:—	2	—	C	P.1
16312	E.A1.50.95	HANDLE, TOGGLE FASTENER, GROUP Spares for:—	1	—	C/MR	
28E/9153406	TERRY 169/1"	RING, split	1	—	C	P.1
635	E.A1.50.49	SPRING, 19 SWG	1	Spring Steel	C	P.1
16313	E.A1.50.155	PIN, special, stud	2	S.11	C/MR	
634	E.A1.50.282	FASTENER, TOGGLE, GROUP Spares for:—	2	—	C	P.1
16312	E.A1.50.95	HANDLE, TOGGLE FASTENER, GROUP Spares for:—	1	—	C/MR	
28E/9153406	TERRY 169/1"	RING, split	1	—	C	P.1
635	E.A1.50.49	SPRING, 19 SWG	1	Spring Steel	C/MR	
16313	E.A1.50.155	PIN, special, stud	2	S.11	B/MR	
636	E.A1.50.283	FASTENER, TOGGLE, GROUP Spares for:—	2	—	C	P.1
7133	E.A1.50.97	HANDLE, TOGGLE FASTENER, GROUP Spares for:—	1	—	C/MR	P.1
28E/9153406	TERRY 169/1"	RING, split	1	—	C	P.1
635	E.A1.50.49	SPRING, 19 SWG	1	Spring Steel	C	P.1
17661	E.1.50.157	PIN, special, stud	2	S.11	C/MR	
637	E.A1.50.284	FASTENER, TOGGLE, GROUP Spares for:—	2	—	C	P.1
7133	E.A1.50.97	HANDLE, TOGGLE FASTENER, GROUP Spares for:—	1	—	C/MR	P.1
28E/9153406	TERRY 169/1"	RING, split	1	—	C	P.1
635	E.A1.50.49	SPRING, 19 SWG	1	Spring Steel	C	P.1
17661	E.1.50.157	PIN, special, stud	2	S.11	C/MR	
28FP/120	FJ.5/60DS DZUS.	FASTENER	4	—	C	
28FP/122	FJ.5/70DS DZUS.	FASTENER	4	—	C	
28FP/124	FJ.5/80DS 628 E.A1.50.161	FASTENER PANEL, toggle fastener housing	2 8	—	C C	 P.1

**POWER INSTALLATION
COWLING, ENGINE, PORT**

Ref. No.	Part No.	Description	No. off	Matl. Spec.	Cl. of Equip.	Plate No.
					M.R. L.M.	
		1 2 3 4 5 6				
28FP/341	DZUS. S5/325	SPRING	8	—	C	
639	E.A1.50.365	WASHER , undercarriage door hinge thrust ...	2	L.46	C	
6503	E.A1.50.1793	WASHER , cup, engine cowling Dzus fastener retaining	10	DTD.124A	C	
5699	E.A6.50.501	DUCT , engine starter exhaust (Pre-Mod. 2129) ...	3	—	C	P.2
25924	E.A6.50.979	DUCT , engine starter exhaust (Mod. 2129) ...	3	—	C	
5696	E.A6.50.593	DUCT , air compressor bleed valve ...	2	—	C	P.2
640	E.A1.50.109	FORK-END , fitting, toggle fastener ...	2	S.11	C	P.2
642	E.A1.50.135	FORK-END , fitting, toggle fastener ...	6	DTD.683	C	P.2
643	E.A1.50.137	FORK-END , fitting, toggle fastener ...	8	DTD.683	C	P.2
5697	E.A6.50.901	FORK-END , fitting, toggle fastener ...	1	DTD.683	C	P.2
645	E.A1.50.29	HOOK , cowl, toggle fastener ...	8	S.11	C	P.2
646	E.A1.50.45	HOOK , cowl, toggle fastener ...	9	S.11	C	P.2
34189	E.A6.50.25	HOOK, COWL, TOGGLE FASTENER, ASSEMBLY, FOR INBOARD FRONT ATTACHMENT OF SERVICE PANEL	1	—	C	
		Spares for:—				
	E.A6.50.21	FORK-END , fitting ...	1	—	—	
646	E.A1.50.45	HOOK , toggle fastener ...	1	—	C	
6485	E.A1.50.121	ROD , toggle fastener ...	1	—	C	
5698	E.A6.50.5	PANEL, ENGINE SERVICE, GROUP ... (Supplied with trim allowance for spares purposes) Spares for:—	1	—	A	P.1-P.2
636	E.A1.50.283	FASTENER, TOGGLE, GROUP ... Spares for:—	2	—	C	P.1
7133	E.A1.50.97	HANDLE, TOGGLE FASTENER, GROUP ... Spares for:—	1	—	C	P.1
28E/9153406	TERRY 169/1"	RING , split ...	1	—	C	P.1
635	E.A1.50.49	SPRING , 19 SWG ...	1	Spring Steel	C	P.1
17661	E.A1.50.157	PIN , special, stud ...	2	S.11	C/MR	
637	E.A1.50.284	FASTENER, TOGGLE, GROUP ... Spares for this group are identical with those for group Part No. E.A1.50.283 on page 1057	2	—	C	P.1
628	E.A1.50.161	PANEL , toggle fastener, housing ...	4	—	C	P.1
	E.A6.50.49	PANEL, SERVICE, ASSEMBLY ... Spares for:—	—	—	—	
16368	E.A6.50.283	DUCT , ventilating (Pre-Mod. 2127) ...	2	L.59	C	
30808	E.A9.50.39	DUCT , ventilating (Mod. 2127) ...	2	L.59	C	
6483	E.A1.50.119	ROD , toggle fastener at station 'A' ...	4	—	C	
5406	E.A1.50.123	ROD , toggle fastener, front, outboard attachment of service panel	1	—	C	
6484	E.A1.50.125	ROD , toggle fastener, rear, attachment of service panel	2	—	C	
7813	E.A1.50.129	ROD , toggle fastener at station 'B' ...	4	—	C	
10705	E.A1.50.131	ROD , toggle fastener at station 'C', top cowl attachment	2	—	C	
5405	E.A1.50.133	ROD , toggle fastener at station 'C' bottom cowl attachment	2	—	C	
1129	E.A1.50.1051	SCREW , special, cowling to wing attachment ...	41	S.11	C	P.2
1025	EEAS.1/1C	SCREW , 2 BA ...	10	S.11	C	
1037	EEAS.1/8E	SCREW , 1/8" BSF ...	8	S.11	C	
651	E.A1.50.101	SPRING , toggle hook tension ...	4	Spring Steel	C	P.2

Pages ~~1061~~ to ~~1080~~ not issued
1059 to 1080



**POWER INSTALLATION
COWLING, ENGINE, STARBOARD**

Ref. No.	Part No.	Description	No. off	Matl. Spec.	Cl. of Equip.		Plate No.
					M.R.	L.M.	
	E.A6.50.495	COWLING, ENGINE, STARBOARD, ASSEMBLY ...	—	—	—		
		Spares for:—					
626	E.A1.50.103	CLIP , toggle, hook spring	2	L.72	C		
627	E.A1.50.105	CLIP , toggle, hook spring	2	L.72	C		
5700	E.A6.50.499	COWL, FRONT, GROUP	1	—	A		P.1
		(Supplied with trim allowance and pilot holes drilled for spares purposes to E.B6.00.131)					
		Spares for:—					
38672	E.A3.00.963	AIR INTAKE, ASSEMBLY (E.A6.50.861)	1	—	B/MR		
		Spares for:—					
	E.A6.50.855	FRAME, NO. 1, ASSEMBLY	1	—	—		
		Spares for:—					
	E.A6.50.905	RING , sealing (Make from EEAS.140, Ref. 20518)	1	—	LM		
25835	E.A6.50.967	ANGLE , duct extractor	1	—	C		
25839	E.A6.50.977	ANGLE , duct extractor	1	—	C		
5701	E.A6.50.881	BRACKET , pipe anti-icing	1	L.72	C		P.1
16443	E.A6.50.819	CLIP , top, special anti-icing pipe	2	L.72	C/MR		
16444	E.A6.50.821	CLIP , bottom, special anti-icing pipe	2	L.72	C/MR		
25569	E.A6.50.957	COVER , access, P.V. ram (Mod. 1469)	1	L.72	C		
16433	E.A6.50.787	DUCT , extractor, outboard (Pre-Mod. 2114)	1	—	B		
16434	E.A6.50.789	DUCT , extractor, inboard (Pre-Mod. 2114)	1	—	B		
25837	E.A6.50.971	DUCT , extractor (Mod. 2114)	2	S.3	B		
16377	E.A6.50.511	LAND , nut ring, starter exhaust	1	—	C		
5690	E.A6.50.735	PANEL , access, bleed valve	1	—	C		P.1
20808	E.A6.50.947	PIPE, ANTI-ICING, ASSEMBLY (MOD. 1473)	1	—	B		P.1
		Spares for:—					
5693	E.A6.50.921	GASKET , air duct	1	Bestobel M.4	C		P.1
1025	EEAS.1/1C	SCREW , 2 BA	2	H.T.S.	C		
25836	E.A6.50.969	PLATE , external doubler	2	—	C		
25838	E.A6.50.975	SPRING , duct, angle mounting bolt (Mod. 2114)	6	DTD.215	C		
17546	E.A6.50.482	COWL, BOTTOM, REAR (LESS U/C COWL DOOR) GROUP (PRE-MOD. 2545)	1	—	A		P.1
		(Supplied with trim allowance for spares purposes to Drg. E.B6.00.134)					
		Spares for:—					
4143	E.A1.50.66	BRACKET , forward hinge	1	DTD.683	C/MR		
4144	E.A1.50.68	BRACKET , aft hinge	1	DTD.683	C/MR		
NGS	E.A6.50.484	COWL, BOTTOM, REAR, ASSEMBLY	—	—	—		
		Spares for:—					
17710	E.B6.50.57	CLIP , pipe	1	—	C		
6921	E.A1.50.871	DUCT	1	—	C		
3822	E.A1.50.1592	DUCT	1	—	C		
15066	E.A1.50.975	FUNNEL , assembly, air ducts	2	—	C		
3821	E.A1.50.1523	OUTLET , drain	1	—	C		
17709	E.B6.50.56	PIPE	1	—	C		
5182	E.A1.50.1601	PLATE , engine sump drainage pipe retaining	1	—	C		
	E.A6.50.923	SEAL , rubber (Make from EEAS.157, Ref. 17745)	QR	—	LM		
20626	EEAS.120	SEAL , rubber	2	—	C		
	E.B6.50.129	SEAL , $\frac{1}{8}$ " thick (Make from Ref. 32C/728)	QR	Neoprene	LM		
	E.B6.50.143	SEAL , $\frac{1}{8}$ " thick (Make from Ref. 32C/728)	2	Neoprene	LM		

**POWER INSTALLATION
COWLING, ENGINE, STARBOARD**

Ref. No.	Part No.	Description	No. off	Matl. Spec.	Cl. of Equip.		Plate No.
					M.R.	L.M.	
		1 2 3 4 5 6					
37413	E.A6.50.991	SPRING, drain outlet (Mod. 2670)	1	—	C		
5014	E.A1.50.1603	SPRING, drain outlet (Pre-Mod. 2670)	1	—	C		
5015	E.A1.50.981	SPRING, air duct outlet funnel	2	—	C		
3037	E.A1.50.318	DOOR, access, in bottom rear cowl	1	—	C		P.1
3039	E.A1.50.320	DOOR, UNDERCARRIAGE COWL, ASSEMBLY (Supplied with trim allowance all round for spares purposes) Spares for:—	1	—	C		P.1
6149	E.A1.50.1075	BLOCK, rubber, aft, half hinge	1	—	C		
633	E.A1.50.281	FASTENER, TOGGLE, GROUP Spares for:—	2	—	C		P.1
16312	E.A1.50.95	HANDLE, TOGGLE FASTENER, GROUP Spares for:—	1	—	C/MR		
28E/9153406	TERRY 169/1"	RING, split	1	—	C		P.1
635	E.A1.50.49	SPRING, 19 SWG	1	Spring Steel	C		P.1
17661	E.A1.50.157	PIN, special stud	2	S.11	C/MR		
634	E.A1.50.282	FASTENER, TOGGLE, GROUP Spares for this group are identical with those for group Part No. E.A1.50.281	2	—	C		P.1
636	E.A1.50.283	FASTENER, TOGGLE, GROUP Spares for:—	1	—	C		P.1
7133	E.A1.50.97	HANDLE, TOGGLE FASTENER, GROUP Spares for:—	1	—	C/MR		P.1
28E/9153406	TERRY 169/1"	RING, split	1	—	C		P.1
635	E.A1.50.49	SPRING, 19 SWG	1	Spring Steel	C		P.1
17661	E.A1.50.157	PIN, special stud	2	S.11	C/MR		
637	E.A1.50.284	FASTENER, TOGGLE, GROUP Spares for this group are identical with those for group Part No. E.A1.50.283	1	—	C		P.1
28FP/120	DZUS. FJ.5/60DS	FASTENER	5	—	C		
28FP/122	DZUS. FJ.5/70DS	FASTENER	4	—	C		
28FP/124	DZUS. FJ.5/80DS	FASTENER	1	—	C		
628	E.A1.50.161	PANEL, toggle fastener housing	6	—	C		P.1
6817	E.B6.50.121	ROD, TENSION, FOR UNDERCARRIAGE COWL DOOR AND CABLE CHECK, ASSEMBLY Spares for this assembly are identical with those for assembly Part No. E.B6.50.121 on page 1056	—	—	B		P.1
28FP/341	DZUS S5/325	SPRING	6	—	C		
639	E.A1.50.365	WASHER, undercarriage cowl door hinge thrust	2	L.46	C		P.1
6503	E.A1.50.1793	WASHER, cup, engine cowling Dzus fastener retaining (Mod. 886)	10	DTD.124A	C		

**POWER INSTALLATION
COWLING, ENGINE, STARBOARD**

Ref. No.	Part No.	Description	No. off	Matl. Spec.	Cl. of Equip.	Plate No.
					M.R. L.M.	
		1 2 3 4 5 6				
28525	E.A9.50.28	COWL, BOTTOM, REAR (LESS U/C COWL DOOR) GROUP (MOD. 2545) (Supplied to Part No. E.A9.00.498 with trim allowance for spares purposes) Spares for this group are identical with those for group Part No. E.A6.50.482 on page 1081, except for the following deletion and addition Delete:—	1	—	A	
	E.A6.50.484	COWL, BOTTOM, REAR Add:—	—	—	—	
15558	E.A9.50.30 E.A6.50.468	COWL, BOTTOM, REAR COWL, TOP, REAR, GROUP (Supplied to Drg. E.B6.00.128 with trim allowance for spares purposes) Spares for this group are identical with those for group Part No. E.A6.50.467 on page 1057	1	—	A	P.1-P.2
5699	E.A6.50.501	DUCT, engine starter, exhaust (Pre-Mod. 2129) ...	3	—	C	P.2
25924	E.A6.50.979	DUCT, engine starter, exhaust (Mod. 2129) ...	3	—	C	
5696	E.A6.50.593	DUCT, air, compressor, bleed valve	2	—	C	P.2
640	E.A1.50.109	FORK-END, fitting, toggle fastener	2	S.11	C	P.2
642	E.A1.50.135	FORK-END, fitting, toggle fastener	6	DTD.683	C	P.2
643	E.A3.50.137	FORK-END, fitting, toggle fastener	8	DTD.683	C	P.2
5704	E.A1.50.159	FORK-END, fitting, toggle fastener	1	DTD.683	C	P.2
645	E.A1.50.29	HOOK, cone, toggle fastener	8	S.11	C	P.2
646	E.A1.50.45	HOOK, cone, toggle fastener	9	S.11	C	P.2
5705	E.A6.50.261 E.A6	PANEL, ENGINE SERVICE, GROUP (Supplied with trim allowance for spares purposes) Spares for this group are identical with those for group Part No. E.A6.50.5 on page 1058, except for the following deletion and addition Delete:—	1	—	A	P.1-P.2
	E.A6.50.49	PANEL, SERVICE, ASSEMBLY Add:—	—	—	—	
	E.A6.50.259	PANEL, SERVICE, ASSEMBLY	—	—	—	
641	E.A1.50.111	ROD-END, fitting, toggle fastener	1	DTD.683	C	P.2
16493	E.A6.50.31	ROD, toggle fastener, front outboard attachment, service panel	1	—	C	
6483	E.A1.50.119	ROD, toggle fastener at station 'A'	4	—	C	
6485	E.A1.50.121	ROD, toggle fastener, front inboard attachment, service panel	1	—	C	
6484	E.A1.50.125	ROD, toggle fastener, rear attachment, service panel	2	—	C	
7813	E.A1.50.129	ROD, toggle fastener at station 'B'	4	—	C	
10705	E.A1.50.131	ROD, toggle fastener at station 'C', top cowl attachment	2	—	C	
5405	E.A1.50.133	ROD, toggle fastener at station 'C', bottom cowl attachment	2	—	C	
1129	E.A1.50.1051	SCREW, special, cowling to wing attachment ...	41	S.11	C	P.2
1025	EEAS.1/1C	SCREW, 2 BA	10	S.11	C	
1037	EEAS.1/8E	SCREW, 1/8" BSF	8	S.11	C	
651	E.A1.50.101	SPRING, toggle, hook tension	4	Spring Steel	C	P.2

Ref. No.	Part No.	1	2	3	4	5	6	Description	No. off	Matl. Spec.	Cl. of Equip. M.R. L.M.	Plate No.

Pages 1085 to 1106 not issued

[Faint, illegible text within a rectangular box]

**POWER INSTALLATION
COWLING, ENGINE, PORT AND STARBOARD**

Ref. No.	Part No.	Description						No. off	Matl. Spec.	Cl. of Equip.	Plate No.
		1	2	3	4	5	6			M.R. L.M.	
SUMMARY OF STOCK ITEMS USED ON ENGINE COWLING, PORT AND STARBOARD, ASSEMBLY											
28D/9436920	A25/1C	Bolt,	2	BA,	hex. head,	"55 long	C	
28D/9133011	A25/2C	Bolt,	2	BA,	hex. head,	"65 long	C	
28D/9133012	A25/3C	Bolt,	2	BA,	hex. head,	"75 long	C	
28D/1010030	A25/7C	Bolt,	2	BA,	hex. head,	1"15 long	C	
28D/9140647	A25/14C	Bolt,	2	BA,	hex. head,	1"85 long	C	
28D/1011023	A25/20C	Bolt,	2	BA,	hex. head,	2"45 long	C	
28D/1011024	A25/21C	Bolt,	2	BA,	hex. head,	2"55 long	C	
28D/1007468	AS.1242/3B	Bolt,	2	BA,	c'sk. head,	"65 long	C	
28D/1007975	AS.1242/1C	Bolt,	2	BA,	c'sk. head,	"5 long	C	
28D/1214091	AS.1242/2C	Bolt,	2	BA,	c'sk. head,	"6 long	C	
28D/1218444	AS.1242/1E	Bolt,	1/4"	BSF,	c'sk. head,	"55 long	C	
28D/1007979	AS.1246/1B	Bolt,	4	BA,	round head,	"45 long	C	
28N/9153394	AGS.899/6	Collar	C	
28M/9403520	A27/CP	Nut,	2	BA,	plain	C	
28M/1006473	A27/CT	Nut,	2	BA,	thin	C	
28M/1007403	A27/ET	Nut,	1/4"	BSF,	thin	C	
28M/1011470	A27/GT	Nut,	5/16"	BSF,	thin	C	
28M/10287	AGS.2001/B/1	Nut,	stiff,	4	BA	C	
28M/10288	AGS.2001/C/1	Nut,	stiff,	2	BA	C	
28M/10290	AGS.2001/E/1	Nut,	stiff,	1/4"	BSF	C	
28P/864	SP.4Y/D6	Pin,	shackle,	1/4"	dia. x	"5 long	C	
28P/867	SP.4Y/D9	Pin,	shackle,	1/4"	dia. x	"65 long	C	
28P/873	SP.4Y/D15	Pin,	shackle,	1/4"	dia. x	"95 long	C	
28P/900	SP.4Y/F10	Pin,	shackle,	5/16"	dia. x	"7 long	C	
28P/938	SP.4Y/H16	Pin,	shackle,	3/8"	dia. x	1" long	C	
28P/5525	SP.4Z/F10	Pin,	shackle,	5/16"	dia. x	"7 long	C	
28P/12348	SP.4Z/F18	Pin,	shackle,	5/16"	dia. x	1"2 long	C	
28P/1021104	SP.90/C3	Pin,	split,	1/16"	dia. x	1/2" long	C	
28P/9527619	SP.90/C7	Pin,	split,	1/16"	dia. x	1" long	C	
28P/19128	SP.90/E4	Pin,	split,	3/32"	dia. x	3/4" long	C	
28W/9419402	SP.13/C	Washer,	2	BA,	plain	C	
28W/9419474	SP.15/B	Washer,	4	BA,	plain	C	
28W/9419475	SP.15/C	Washer,	2	BA,	plain	C	
28W/9419404	SP.16/C	Washer,	2	BA,	plain	C	

Ref. No.	Part No.	1 2 3 4 5 6						No. off	Matl. Spec.	Cl. of Equip.	Plate No.
										M.R.	

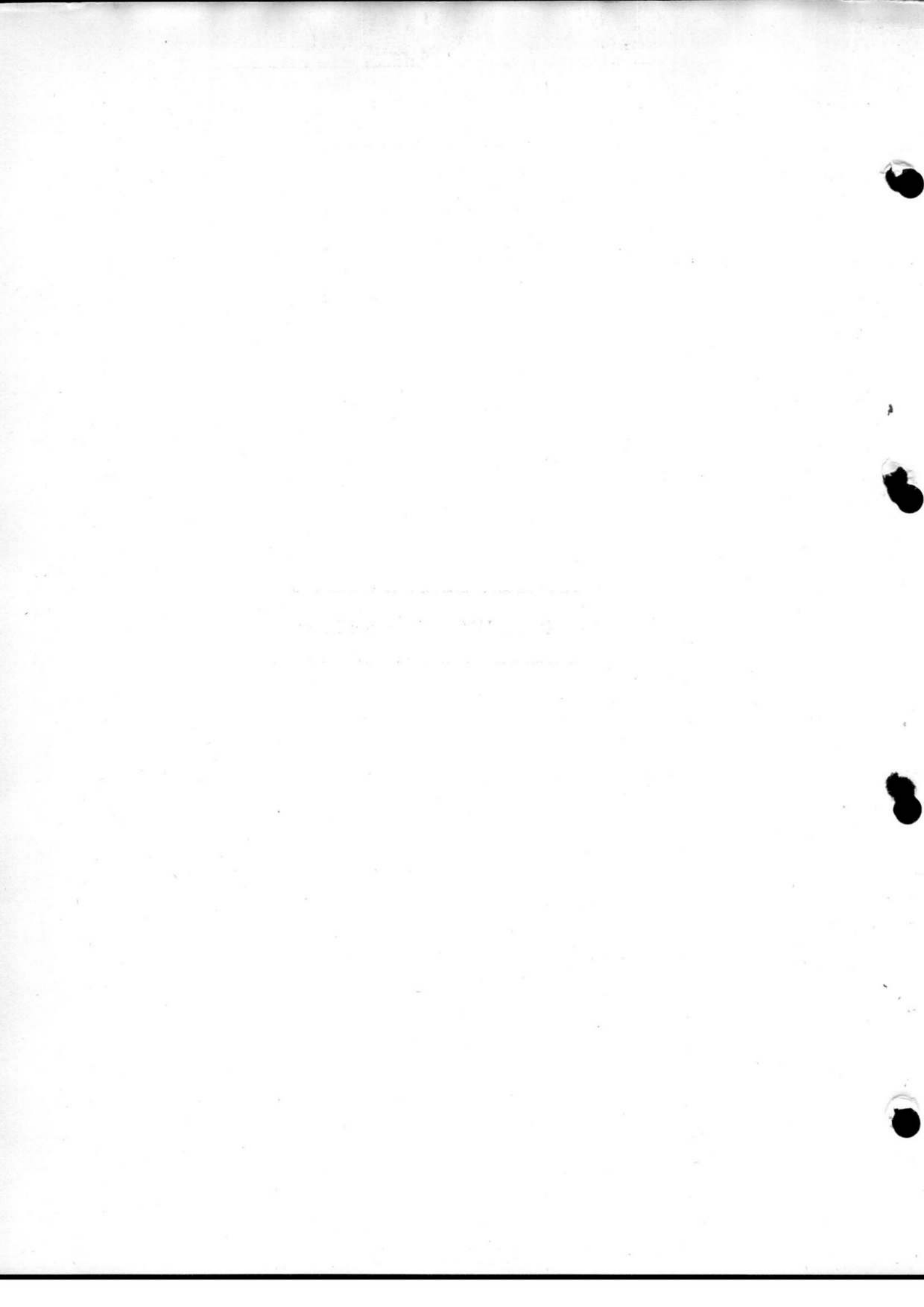
**POWER INSTALLATION
ENGINE MOUNTINGS AND ATTACHMENTS, PORT**

Ref. No.	Part No.						Description	No. off	Matl. Spec.	Cl. of St.	Plate No.
		1	2	3	4	5				M.R. L.M.	
	E.A1.51.1						ENGINE MOUNTINGS AND ATTACHMENTS, PORT, ASSEMBLY	—	—	—	
							Spares for:—				
951	E.A1.51.17						Bearing , spherical seating, rear engine mounting	2	S11	C	P.2
952	E.A1.51.37						Bolt , eye, special, engine bracket and control bracket mounting	1	S11	C	P.2
953	E.A1.51.39						Bolt , eye, special, engine bracket and control bracket mounting	1	S11	C	P.2
6819	E.A6.50.899						Bolt , special, engine mounting bracket ...	1	S96	C	P.2
954	E.A1.51.3						BRACKET, ENGINE MOUNTING, REAR, GROUP	1	—	B/MR	P.2
							Consisting of:—				
	E.A1.51.11						Bracket , mounting	1	DTD.683	—	
	E.A1.51.13						Cap , retaining	1	DTD.683	—	
28M/13295	A27/JP						Nut , $\frac{3}{8}$ " BSF, plain	2	—	C	P.2
3626	E.A1.51.207						Screw , grub	2	S11	C	P.2
957	E.A1.51.15						Stud , special	1	S11	C	P.2
28L/683	AGS.195/4						Washer , tab, lock, for stud nuts	2	—	C	P.2
958	E.A1.51.5						MOUNTING, ENGINE, FORWARD, INBOARD, GROUP	1	—	B/MR	P.2
							Spares for:—				
960	E.A1.51.33						Bolt , special, shouldered, engine mounting	1	S11	C	P.2
961	E.A1.51.201						Bracket , engine mounting	1	Z5Z	C	P.2
963	E.A1.51.45						Fork-end , tie rod	1	S11	C	
964	E.A1.51.27						Nut , locking, special	1	L40	C	P.2
965	E.A1.51.25						Plug , retaining	1	L40	C	P.2
966	E.A1.51.43						Rod , tie, adjustable, spherical end	1	S65	C	P.2
30A/2296	+						Wire , locking, 20 SWG	QR	—	C	

**POWER INSTALLATION
ENGINE MOUNTINGS AND ATTACHMENTS, PORT**

Ref. No.	Part No.	Description					No. off	Matl. Spec.	Cl. of St.	Plate No.
		1	2	3	4	5			M.R. L.M.	
6820	E.B6.51.23	MOUNTING, ENGINE, FORWARD OUTBOARD, GROUP					1	—	B/MR	
		Spares for:—								
960	E.A1.51.33	Bolt , special, shouldered, engine mounting					1	S11	C	P.2
6821	E.B6.51.21	Bracket , engine mounting					1	Z5Z	C	P.2
963	E.A1.51.45	Fork-end , tie rod					1	S11	C	P.2
964	E.A1.51.27	Nut , locking, special					1	L40	C	P.2
965	E.A1.51.25	Plug , retaining					1	L40	C	P.2
966	E.A1.51.43	Rod , tie, adjustable, spherical end					1	S65	C	P.2
30A/2296	+	Wire , locking, 20 SWG					QR	—	C	
971	E.A1.51.19	Pin , special, spherical bearing, rear inboard, bracket retaining					1	S11	C	P.2

Pages 1111 to 1120 not issued



**POWER INSTALLATION
ENGINE MOUNTINGS AND ATTACHMENTS, STARBOARD**

Ref. No.	Part No.	Description	No. off	Matl. Spec.	Cl. of Equip.	Plate No.
					M.R. L.M.	
	E.A1.51.2	ENGINE MOUNTINGS AND ATTACHMENTS, STARBOARD, ASSEMBLY	—	—	—	
		Spares for:—				
951	E.A1.51.17	Bearing, spherical seating, rear engine mounting ...	2	S.11	C	P.2
952	E.A1.51.37	Bolt, eye, special, engine bracket and control bracket mounting	1	S.11	C	P.2
953	E.A1.51.39	Bolt, eye, special engine bracket and control bracket mounting	1	S.11	C	P.2
6822	E.A6.50.29	Bolt, eye, toggle bracket attachment ...	1	S.96	C	
6823	E.A6.50.27	Bracket, toggle attachment ...	1	S.96	C	P.2
955	E.A1.51.4	BRACKET, ENGINE MOUNTING, REAR, GROUP ...	1	—	B/MR	P.2
		Consisting of:—				
	E.A1.51.12	Bracket, mounting ...	1	DTD.683	—	
	E.A1.51.13	Cap, retaining ...	1	DTD.683	—	
28M/13295	A27/JP	Nut, 1/8" BSF, plain ...	2	—	C	P.2
3626	E.A1.51.207	Screw, grub ...	2	S.11	C	P.2
957	E.A1.51.15	Stud, special ...	1	S.11	C	P.2
28W/683	AGS.195/4	Washer, tab, lock, for stud nuts ...	2	—	C	P.2
959	E.A1.51.6	MOUNTING, ENGINE, FORWARD, INBOARD, GROUP	1	—	B/MR	P.2
		Spares for:—				
960	E.A1.51.33	Bolt, special, shouldered, engine mounting ...	1	S.11	C	P.2
962	E.A1.51.202	Bracket, engine mounting ...	1	Z5Z	C	P.2
963	E.A1.51.45	Fork-end, tie rod ...	1	S.11	C	P.2
964	E.A1.51.27	Nut, locking, special ...	1	L.40	C	P.2
965	E.A1.51.25	Plug, retaining ...	1	L.40	C	P.2
966	E.A1.51.43	Rod, tie, adjustable, spherical end ...	1	S.65	C	P.2
30A/2296	†	Wire, locking, 20 SWG ...	QR	—	C	
6824	E.B6.51.24	MOUNTING, ENGINE, FORWARD, OUTBOARD, GROUP	1	—	B/MR	
		Spares for:—				
960	E.A1.51.33	Bolt, special, shouldered, engine mounting ...	1	S.11	C	P.2
6825	E.B6.51.22	Bracket, engine mounting ...	1	Z5Z	C	P.2
963	E.A1.51.45	Fork-end, tie rod ...	1	S.11	C	P.2
964	E.A1.51.27	Nut, locking, special ...	1	L.40	C	P.2
965	E.A1.51.25	Plug, retaining ...	1	L.40	C	P.2
966	E.A1.51.43	Rod, tie, adjustable, spherical end ...	1	S.65	C	P.2
30A/2296	†	Wire, locking, 20 SWG ...	QR	—	C	
971	E.A1.51.19	Pin, special, spherical bearing, rear inboard, bracket retaining	1	S.11	C	P.2

Restricted

Ref. No.	Part No.	1	2	3	4	5	6	Description	No. off	Matl. Spec.	Cl. of Equip.	Plate No.
											M.R. L.M.	

Pages 1123 to 1132 not issued

**POWER INSTALLATION
ENGINE MOUNTINGS AND ATTACHMENTS, PORT AND STARBOARD**

Ref. No.	Part No.	Description	No. off	Matl. Spec.	Cl. of Equip.	Plate No.
					M.R. L.M.	
		1 2 3 4 5 6				
		SUMMARY OF STOCK ITEMS USED ON ENGINE MOUNTINGS AND ATTACHMENTS, PORT AND STARBOARD, ASSEMBLY				
28D/12817	A25/8G	Bolt, $\frac{5}{16}$ " BSF, hex. head, 1"35 long	...			C
28D/13582	A25/11G	Bolt, $\frac{5}{16}$ " BSF, hex. head, 1"65 long	...			C
28D/12819	A25/12G	Bolt, $\frac{5}{16}$ " BSF, hex. head, 1"75 long	...			C
28M/13375	A27/GP	Nut, $\frac{3}{8}$ " BSF, plain	...			C
28M/13123	A27/JS	Nut, $\frac{3}{8}$ " BSF, slotted	...			C
28M/13244	A27/PT	Nut, $\frac{3}{8}$ " BSF, thin	...			C
28M/10291	AGS.2001/G/1	Nut, stiff, $\frac{5}{8}$ " BSF	...			C
28P/9429528	SP9/C8	Pin, split, $\frac{1}{16}$ " dia. x 1" long	...			C
28W/9419476	SP15/G	Washer, $\frac{5}{16}$ " BSF, plain	...			C
28W/9419488	SP16/G	Washer, $\frac{5}{16}$ " BSF, plain	...			C
28W/9419489	SP16/J	Washer, $\frac{3}{8}$ " BSF, plain	...			C

Ref. No.	Part No.	Description						No. off	Matl. Spec.	Cl. of Equip.	Plate No.
		1	2	3	4	5	6			M.R. L.M.	

**POWER INSTALLATION
RA.7 ENGINE INSTALLATION, PORT**

Ref. No.	Part No.	Description	No. off	Matl. Spec.	Cl. of Equip.		Plate No.
					M.R.	L.M.	
		1 2 3 4 5 6					
	E.A9.00.15	RA7, ENGINE INSTALLATION, PORT, ASSEMBLY ...	—	—	—		
		Spares for:—					
5706	E.B7.75.117	ADAPTOR , screwed, cabin pressure system connection, at engine	1	S.91	C		
220	EEAS.12/1	BOLT , special, engine control rod, end	2	S.96	C		
5707	K.A.C. CO. LTD.						
18634	C.4205/1½-1½B	CLAMP , pipe toggle, at hot air valve	2	—	C		
5718	E.B7.50.85	CONNECTION , banjo, fuel drain	1	DTD.683	C		
5708	E.A6.47.141	CONTROL , tube, engine throttle	1	—	B		
	E.B7.50.23	CONTROL , tube, engine shut off cock	1	—	B		
	E.A9.20.743	ELBOW , pipe assembly, hot air valve to engine	1	—	B		
		ENGINE, YENTING SYSTEM	—	—	—		
		Spares for:—					
	E.A9.20.1267	AIR, INTAKE FOR ZONE 2, COOLING IN INNER WING, LEADING EDGE	—	—	—		
		Spares for:—					
12348	E.A9.20.1021	DUCT , air entry	1	—	B/MR		
12349	E.A9.20.1025	HOSE , rubber pipe connection, 2"5 i/d x 2"5 long	1	Silastic	C		
12350	E.A9.20.1017	PIPE , from air-intake to air duct connection, 2½" o/d. x 20 SWG	1	L.54	B		
5647	EEAS.143/26	CLIP , pipe, 1" o/d. single	4	L.72	C		
18541	E.B6.20.129	DUCT , air spill pipe, R.H., inner wing	1	L.59	C/MR		
18542	E.B6.20.130	DUCT , air spill pipe, R.H., inner wing	1	L.59	C/MR		
18543	E.B6.20.131	DUCT , air spill pipe, L.H., outer wing	1	L.59	C/MR		
18544	E.B6.20.132	DUCT , air spill pipe, L.H., outer wing	1	L.59	C/MR		
18545	E.B6.20.133	DUCT , air spill pipe, outer wing	1	L.59	C/MR		
20838	E.A9.20.585	DUCT , air spill pipe, inner wing	1	L.59	C/MR		
12349	E.A9.20.1025	HOSE , rubber pipe connection, 2"5 i/d. x 2"5 long	1	Silastic	C		
	E.B6.50.21	PIPE, ENGINE, VENT, GROUND RUNNING, ASSEMBLY	1	—	—		
		Spares for:—					
18629	E.B6.20.29	CLIP , for pipe mounting bracket	2	L.72	C		
18630	E.B6.50.31	CLIP , for pipe mounting bracket	2	L.72	C		
18627	E.B6.50.23	PIPE	1	L.54	C		
18580	E.B6.20.553	PIN , nozzle, bottom	1	—	C/MR		
	E.B6.20.561	PIPE, NOZZLE, TOP, ASSEMBLY	1	—	—		
		Spares for:—					
18576	E.B6.20.541	ADAPTOR	1	—	C		
		Attaching parts for E.B6.20.541:—					
28D/1011014	A25/19B	Bolt, 4 BA	1	—	C		
28M/1006504	A27/BT	Nut, 4 BA	1	—	C		
28W/9419465	SP.13/B	Washer	1	—	C		
18578	E.B6.20.547	PIPE , nozzle	1	—	C/MR		
18577	E.B6.20.543	SPRING , compression	1	—	C/MR		

**POWER INSTALLATION
RA.7 ENGINE INSTALLATION, PORT**

Ref. No.	Part No.	Description	No. off	Matl. Spec.	Cl. of Equip.		Plate No.
					M.R.	L.M.	
	E.B6.20.511	SHROUD, REAR ENGINE VENT, ASSEMBLY ...	—	—	—		
		Spares for:—					
18569	E.B6.20.519	BRACKET , shroud, fixing	4	DTD.124	C		
18570	E.B6.20.521	BRACKET , shroud, fixing	4	DTD.124	C		
18571	E.B6.20.523	BRACKET , shroud, fixing	4	DTD.124	C		
18572	E.B6.20.525	BRACKET , shroud, fixing	4	DTD.124	C		
18566	E.B6.20.513	SHROUD	1	DTD.171	C		
18567	E.B6.20.515	SHROUD	1	DTD.171	C		
1025	EEAS.1/1C	SCREW , 2 BA	8	5.96	C		
	EEAS.21/6CU	WASHER , special, 22 SWG	4	DTD.124	—		
	E.A1.60.5	FIRE PROTECTION SYSTEM, IN ENGINE BAY ...	—	—	—		
		Spares for:—					
27N/91	HS/RS300	UNIT , fire detecting, resetting (Pre-Mod. 4303)	7	—	A		
27N/340	150D/01/300(2)	UNIT , fire detecting, resetting (Mod. 4303) ...	7	—	A		
		Attaching parts for HS/RS300 and 150D/01/300(2):—					
28D/9435710	A25/11C	Bolt, 2 BA (As required)	2	—	C		
28D/1011024	A25/21C	Bolt, 2 BA (As required)	1	—	C		
28M/10288	AGS.2001/C/1	Nut, 2 BA	2	—	C		
	E.A1.60.43	Tube, distance (As required)	1	—	—		
28W/9419475	SP.15/C	Washer	2	—	C		
16448	E.B7.50.25	FITTING , end, hot air valve	1	DTD.683	C		
6521	E.B7.50.73	GASKET , for shut-off valve, end fitting	1	L.59	C		
6522	E.B7.50.75	GASKET , for shut-off, valve elbow	1	L.59	C		
5709	E.B7.75.115	GASKET , for wheel case breather pipe, engine connection	1	L.59	C		
5710	E.B7.75.119	GASKET , for anti-icing and cabin pressure pipe, engine connection	2	L.59	C		
5711	E.A6.50.833	HOSE , metallic, from hot air valve to anti-icing pipe	1	—	C		
1122	EEAS.63	NUT , slotted, for engine control, end, rod bolt ...	2	5.96	C		
18626	E.A6.50.869	PIPE , assembly, fuel drain	1	DTD.323	C		
1383	E.A1.57.15	PIPE , flexible, engine fuel (Dunlop Part No. A.H.M. 54/21-0)	1	WH2/1	C		
1384	E.A1.57.16	PIPE , flexible, engine fuel (Dunlop Part No. A.H.M. 542/21-0)	1	WH2/1	C		
12631	E.B7.50.105	PIPE , assembly, construction wheel case breather, 1½" o/d. x 20 SWG	1	L.54	C		
12351	E.B7.50.133	PIPE , flanged, wheel case breather, 1½" o/d. x 20 SWG	1	T.26	B		
19847	E.B7.57.189	PIPE , flexible, drop tank, air supply	1	—	C		
1381	E.A1.60.57	PIPE , flexible, fire protection system (Dunlop Part No. A.H.O. 2408/10-75)	1	WH2/1	C		
5716	E.B7.61.83	PIPE , flexible, air cooling, for 2 speed generator (Pre-Mod. 3460)	1	—	C		
39472	E.B6.71.133	PIPE , flexible, air cooling, for 2 speed generator (Mod. 3460)	1	—	C		
5717	E.B7.75.109	PIPE , flexible, cabin pressure system	1	—	C		
	BELLS ASBESTOS						
28F/17675	AS.5402	RING , sealing, anti-icing, connection	2	—	C		
13149	EEAS.66/6	RING , clamping, 1¼" i/d.	4	L.72	C		
	DUNLOP						
12326	DAS.393/24/3	SLEEVE , connecting, for wheel case, breather ...	2	—	C		

**POWER INSTALLATION
RA.7 ENGINE INSTALLATION, PORT**

Ref. No.	Part No.	Description						No. off	Matl. Spec.	Cl. of Equip.	Plate No.
		1	2	3	4	5	6			M.R. L.M.	
	E.A3.81.1105										
3613	†										
6A/3811	†										
or											
6A/5452	†										
	E.B7.50.31										
	E.E. CO. LTD										
	BRADFORD										
5W/400	TYPE 234										
	TEDDINGTON										
27V/4282	FKH/A/16										

Pages ~~1139~~ to ~~1148~~ not issued

~~1137~~ to 1148

1139 to 1146

THE UNIVERSITY OF CHICAGO
LIBRARY

**POWER INSTALLATION
RA.7 ENGINE INSTALLATION, STARBOARD**

Ref. No.	Part No.	Description	No. off	Matl. Spec.	Cl. of Equip.		Plate No.
					M.R.	L.M.	
		1 2 3 4 5 6					
	E.A9.00.16	RA7, ENGINE, INSTALLATION, STARBOARD,	—	—	—		
		Spares for:—					
5706	E.B7.75.117	ADAPTOR , screwed, cabin pressure system, connection at engine	1	S.91	C		
220	EEAS.12/1	BOLT , special engine, control rod end	2	S.96	C		
	K.A.C. CO. LTD.						
5707	C.4205	CLAMP , pipe toggle, at hot air valve	2	—	C		
18634	E.B7.50.85	CONNECTION , banjo, fuel drain	1	DTD.683	C		
1395	E.A1.47.519	CONTROL , tube, engine throttle	1	—	C		
6826	E.A6.47.145	CONTROL , tube, engine shut-off cock	1	—	C		
5719	E.B7.50.33	ELBOW , pipe, assembly, hot air valve to engine ...	1	—	B		
	E.A9.20.744	ENGINE, VENTING SYSTEM	—	—	—		
		Spares for:—					
	E.A9.20.1268	AIR INTAKE, FOR ZONE 2, COOLING IN INNER WING, LEADING EDGE, ASSEMBLY	—	—	—		
		Spares for:—					
12348	E.A9.20.1021	DUCT , air entry	1	—	B/MR		
12349	E.A9.20.1025	HOSE , rubber pipe connection, 2"5 i/d. x 2"5 long	1	Silastic	C		
12352	E.A9.20.1018	PIPE , from air intake to air duct connection, 2 1/2" o/d. x 20 SWG	1	L.54	B		
18541	E.B6.20.129	DUCT , air spill pipe, R.H., inner wing	1	L.59	C/MR		
18542	E.B6.20.130	DUCT , air spill pipe, R.H., inner wing	1	L.59	C/MR		
18543	E.B6.20.131	DUCT , air spill pipe, L.H., outer wing	1	L.59	C/MR		
18544	E.B6.20.132	DUCT , air spill pipe, L.H., outer wing	1	L.59	C/MR		
18546	E.B6.20.134	DUCT , air spill pipe, outer wing	1	L.59	C/MR		
20838	E.A9.20.585	DUCT , air spill pipe, inner wing	1	L.59	C/MR		
12349	E.A9.20.1025	HOSE , rubber pipe connection, 2"5 i/d. x 2"5 long	1	Silastic	C		
	E.B6.50.22	PIPE, ENGINE VENT, GROUND, RUNNING, ASSEMBLY	1	—	—		
		Spares for:—					
18629	E.B6.50.29	CLIP , for pipe mounting bracket	2	L.72	C		
18630	E.B6.50.31	CLIP , for pipe mounting bracket	2	L.72	C		
18628	E.B6.50.24	PIPE	1	L.54	C		
18581	E.B6.20.554	PIPE , nozzle bottom	1	—	C/MR		
	E.B6.20.562	PIPE, NOZZLE, TOP, ASSEMBLY	1	—	—		
		Spares for:—					
18576	E.B6.20.541	ADAPTOR	1	—	C		
		Attaching parts for E.B6.20.541:—					
28D/1011014	A25/19B	Bolt, 4 BA	1	—	C		
28M/1006504	A27/BT	Nut, 4 BA	1	—	C		
28W/9419465	SP.13/B	Washer	1	—	C		
18579	E.B6.20.548	PIPE , nozzle	1	—	C/MR		
18577	E.B6.20.543	SPRING , compression	1	—	C/MR		

**POWER INSTALLATION
RA.7 ENGINE INSTALLATION, STARBOARD**

Ref. No.	Part No.	Description	No. off	Matl. Spec.	Cl. of Equip.		Plate No.
					M.R.	L.M.	
	E.B6.20.511	SHROUD, REAR, ENGINE VENT, ASSEMBLY ...	—	—	—		
		Spares for:—					
18569	E.B6.20.519	BRACKET , shroud, fixing	4	DTD.124	C		
18570	E.B6.20.521	BRACKET , shroud, fixing	4	DTD.124	C		
18571	E.B6.20.523	BRACKET , shroud, fixing	4	DTD.124	C		
18572	E.B6.20.525	BRACKET , shroud, fixing	4	DTD.124	C		
18566	E.B6.20.513	SHROUD	1	DTD.171	C		
18567	E.B6.20.515	SHROUD	1	DTD.171	C		
1025	EEAS.1/1C	SCREW , 2 BA	8	S.96	C		
	EEAS.21/6CU	WASHER , special, 22 SWG	4	DTD.124	—		
	E.A1.60.6	FIRE PROTECTION SYSTEM, IN ENGINE BAY, ASSEMBLY	—	—	—		
		Spares for:—					
16481	E.A1.60.51	BRACKET , mounting, L.H., detector unit ...	1	—	C		
		Attaching parts for E.A1.60.51:—					
28D/9436920	A25/1C	Bolt, 2 BA	2	—	C		
28D/9140645	A25/10C	Bolt, 2 BA	2	—	C		
28M/10288	AGS.2001/C/1	Nut, 2 BA	4	—	C		
	E.A1.60.43	Tube, distance	2	—	—		
28W/9419475	SP.15/C	Washer	4	—	C		
27N/91	HS/RS.300	UNIT , fire detecting, resetting (Pre-Mod. 4303)	8	—	A		
27N/340	150D/01/300(2)	UNIT , fire detecting, resetting (Mod. 4303) ...	8	—	A		
		Attaching parts for HS/RS300 or 150D/01/300(2)					
28D/9435710	A25/11C	Bolt, 2 BA (As required)	2	—	C		
28D/9140647	A25/15C	Bolt, 2 BA (As required)	2	—	C		
28M/10288	AGS.2001/C/1	Nut, 2 BA	2	—	C		
	AS.2807/5/035	Tube, distance (As required) 20 SWG	2	T.35 or T.45	LM		
28W/9419475	SP.15/C	Washer	2	—	C		
16448	E.B7.50.25	FITTING , end, hot air valve	1	DTD.683	C		
6521	E.B7.50.73	GASKET , for shut-off valve, end fitting	1	L.59	C		
6522	E.B7.50.75	GASKET , for shut-off valve, elbow	1	L.59	C		
5709	E.B7.75.115	GASKET , for wheel case, breather pipe, engine connection	1	L.59	C		
5710	E.B7.75.119	GASKET , for anti-icing and cabin pressure pipe, engine connection	2	L.59	C		
5720	E.B7.50.21	HOSE , metallic, from hot air valve to anti-icing pipe	1	—	C		
1122	EEAS.63	NUT , slotted, for engine control rod end bolt ...	2	S.96	C		
18626	E.B6.50.869	PIPE , assembly, fuel drain	1	DTD.323	C		
1383	E.A1.57.15	PIPE , flexible, engine fuel (Dunlop Part No. A.H.M. 541/21-0)	1	WH2/1	C		
1384	E.A1.57.16	PIPE , flexible, engine fuel (Dunlop Part No. A.H.M. 542/21-0)	1	WH2/1	—		
12632	E.B7.50.106	PIPE , assembly, continuation, wheel case breather	1	L.54	C		
12353	E.B7.50.134	PIPE , flanged, wheel case breather, 1½" o/d. x 20 SWG	1	T.26	B		
19846	E.B6.57.83	PIPE , flexible, drop tank, air supply	1	—	C		

**POWER INSTALLATION
RA.7 ENGINE INSTALLATION, STARBOARD**

Ref. No.	Part No.	Description						No. off	Matl. Spec.	Cl. of Equip. M.R. L.M.	Plate No.
		1	2	3	4	5	6				
1382	E.A1.60.58	PIPE , flexible, fire protection system (Dunlop Part No. A.H.O.24509/1075)						1	WH2/1	C	
6970	E.B7.61.85	PIPE , flexible, air cooling, for 2 speed generator (Pre-Mod. 3460)						1	—	C	
39473	E.B7.61.135	PIPE , flexible, air cooling, for 2 speed generator (Mod. 3460)						1	—	C	
5717	E.B7.75.109	PIPE , flexible, cabin pressure system						1	—	C	
28F/17675	BELLS ASBESTOS AS.5402	RING , sealing, anti-icing, pipe connection						2	—	C	
13149	EEAS.66/6	RING , clamping, 1½" i/d.						4	L.72	C	
12326	DUNLOP DAS.393/24/3	SLEEVE , connecting, for wheel case breather						2	—	C	
	E.A3.81.1105	THERMO-COUPLE, ASSEMBLY						4	—	—	
		Spares for:—									
3613	†	TUBE , silicon rubber, ⅜" i/d. x 16" long						1	—	C	
6A/3811	†	THERMO-COUPLE , type B						1	—	A	
or											
6A/5452	†										
	E.B7.50.31	VALVE, HOT AIR, ASSEMBLY						1	—	—	
		Consisting of:—									
	E.E. CO. LTD BRADFORD TYPE 234	ACTUATOR						1	—	A	
5W/400	TEDDINGTON										
27V/4282	FKH/A/16	VALVE , 1½"						1	—	A	

Restricted

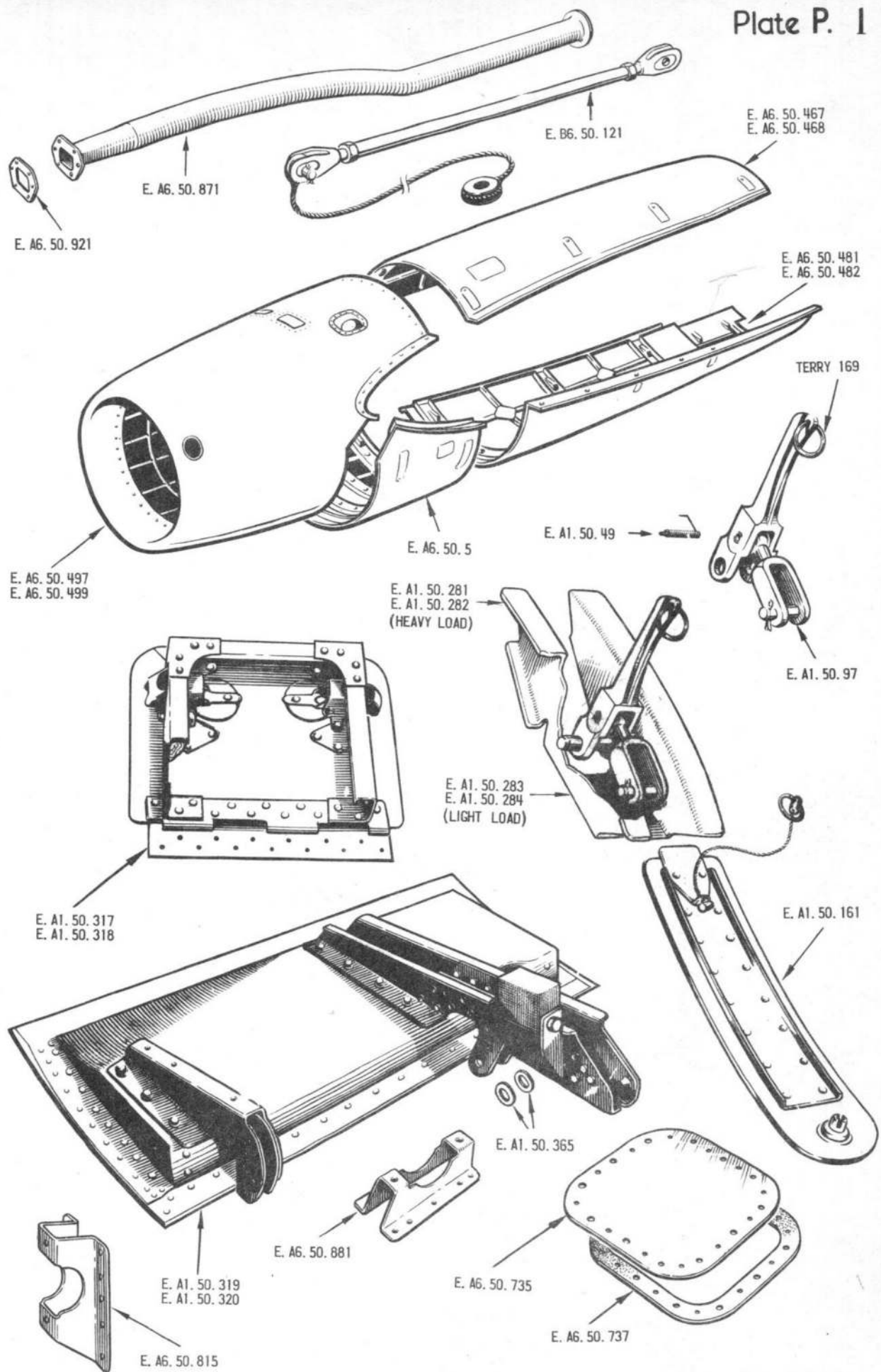
Ref. No.	Part No.							No. off	Matl. Spec.	Cl. of Equip.	Plate No.
		1	2	3	4	5	6			M.R. L.M.	

**POWER INSTALLATION
RA.7 ENGINE INSTALLATION, PORT AND STARBOARD**

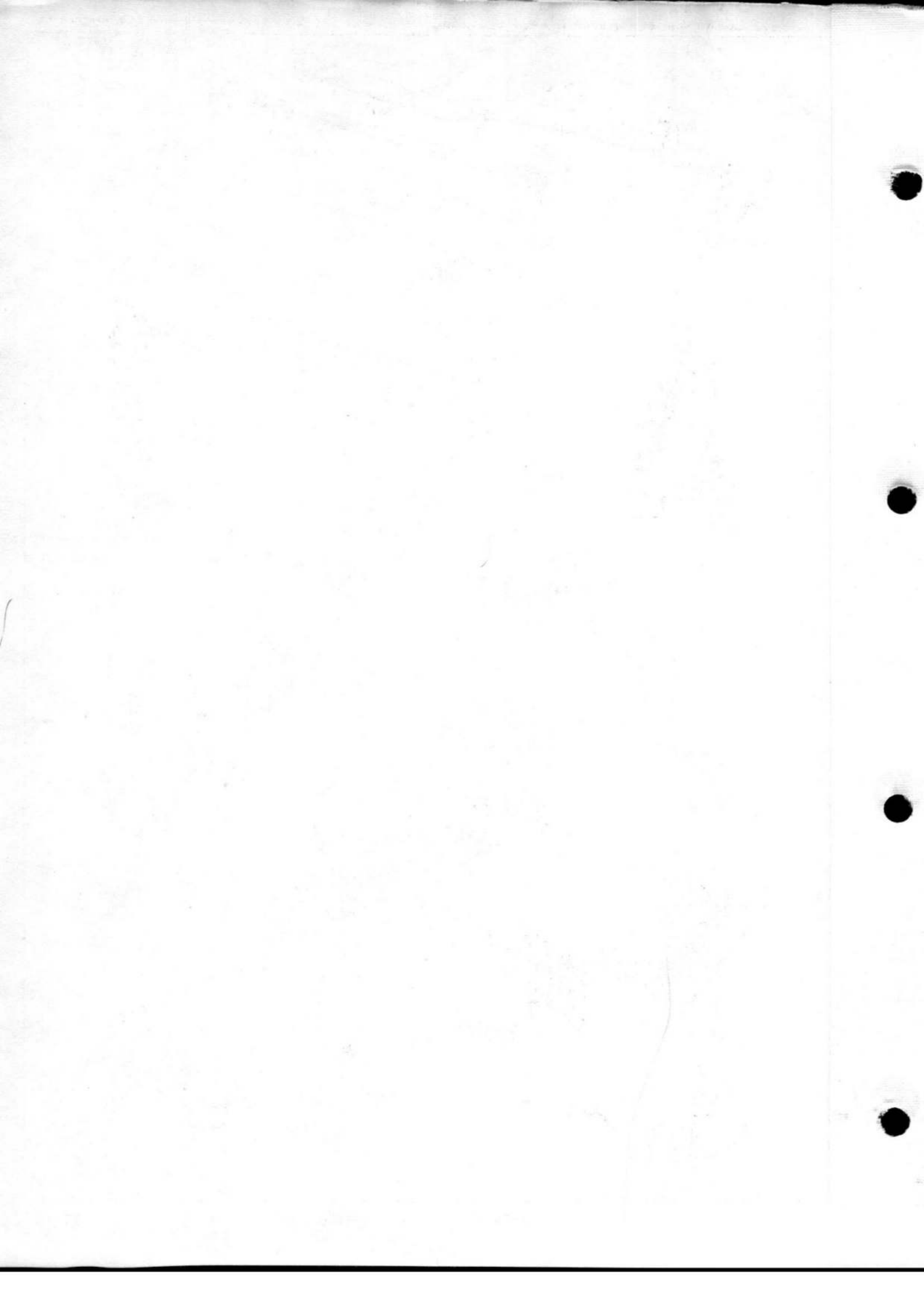
Ref. No.	Part No.	Description						off	Matl. Spec.	Cl. of Equip.	Plate No.
		1	2	3	4	5	6			M.R. L.M.	
SUMMARY OF STOCK ITEMS USED ON RA7 ENGINE INSTALLATION, PORT AND STARBOARD, ASSEMBLY											
28D/1010658	A25/1B	Bolt,	4	BA,	hex. head,	0"5	long	C
28D/1008149	A25/2B	Bolt,	4	BA,	hex head,	0"6	long	C
28D/9436920	A25/1C	Bolt,	2	BA,	hex. head,	0"55	long	C
28D/9133011	A25/2C	Bolt,	2	BA,	hex. head,	0"65	long	C
28D/1200119	A25/4C	Bolt,	2	BA,	hex. head,	0"85	long	C
28D/9133013	A25/5C	Bolt,	2	BA,	hex. head,	0"95	long	C
28G/3813	AGS.797/D	Eye-bolt,	2	BA	C
28F/8011885	AGS.1142/B	Nipple, adaptor	C
28M/9403519	A27/BP	Nut,	4	BA,	plain	C
28M/5808573	A27/CS	Nut,	2	BA,	slotted	C
28M/1011467	A27/ES	Nut,	2	"	BSF, slotted	C
28M/13935	A58/ES	Nut,	2	"	BSF, slotted	C
28M/10287	AGS.2001/B/1	Nut,	stiff,	4	BA	C
28M/10288	AGS.2001/C/1	Nut,	stiff,	2	BA	C
28P/9429528	SP.9/C8	Pin, split,	1/4"	dia.	x	1"	long	C
28W/9419465	SP.13/B	Washer,	4	BA,	plain	C
28W/9419402	SP.13/C	Washer,	2	BA,	plain	C
28W/9418921	SP.13/E	Washer,	1/2"	BSF,	plain	C
28W/9419475	SP.15/C	Washer,	2	BA,	plain	C
28W/9416642	SP.47/B	Washer,	4	BA,	spring	C

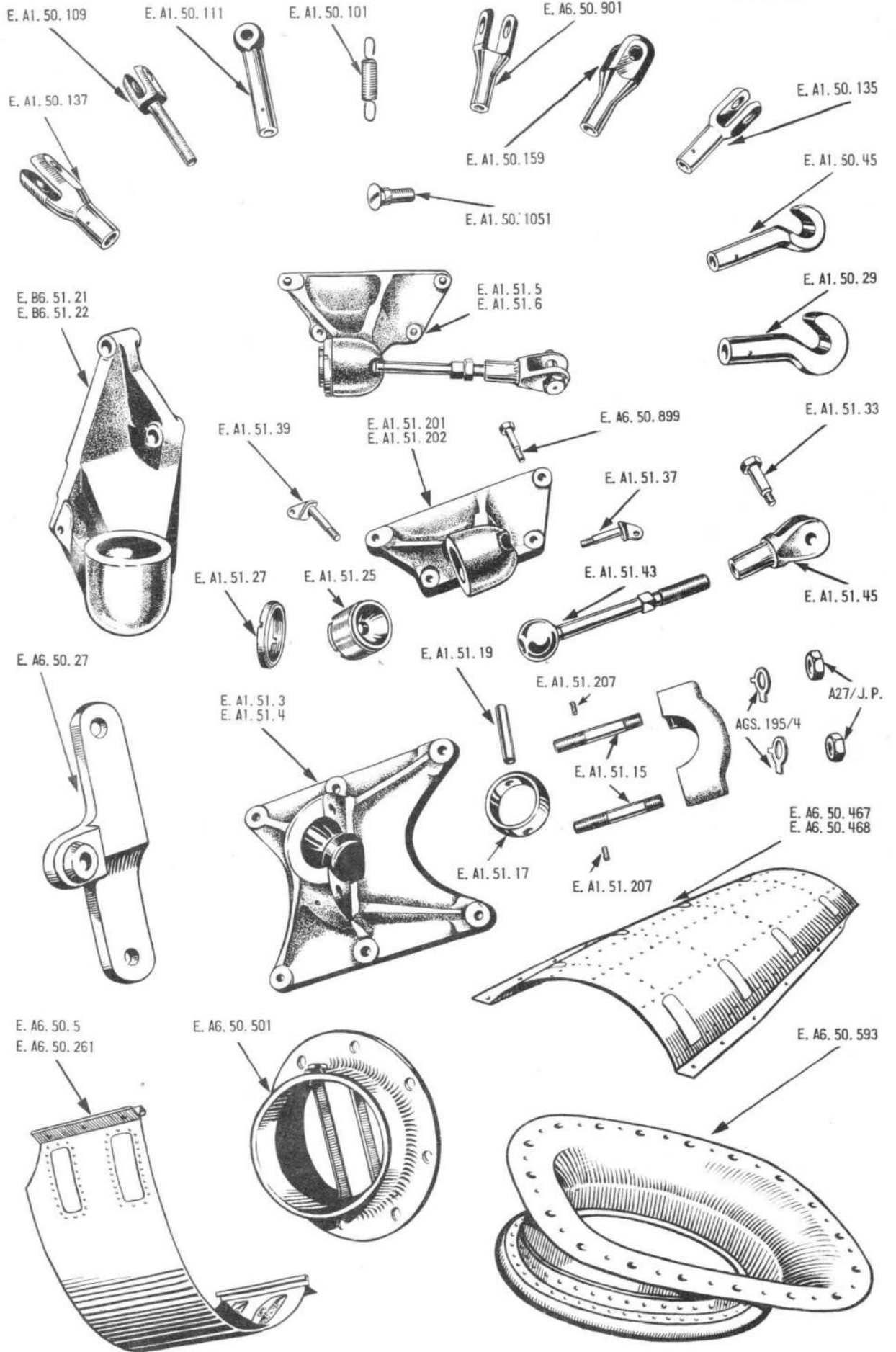
Restricted

Ref. No.	Part No.							off	Matl. Spec.	Cl. of Equip.	Plate No.
		1	2	3	4	5	6			M.R. L.M.	

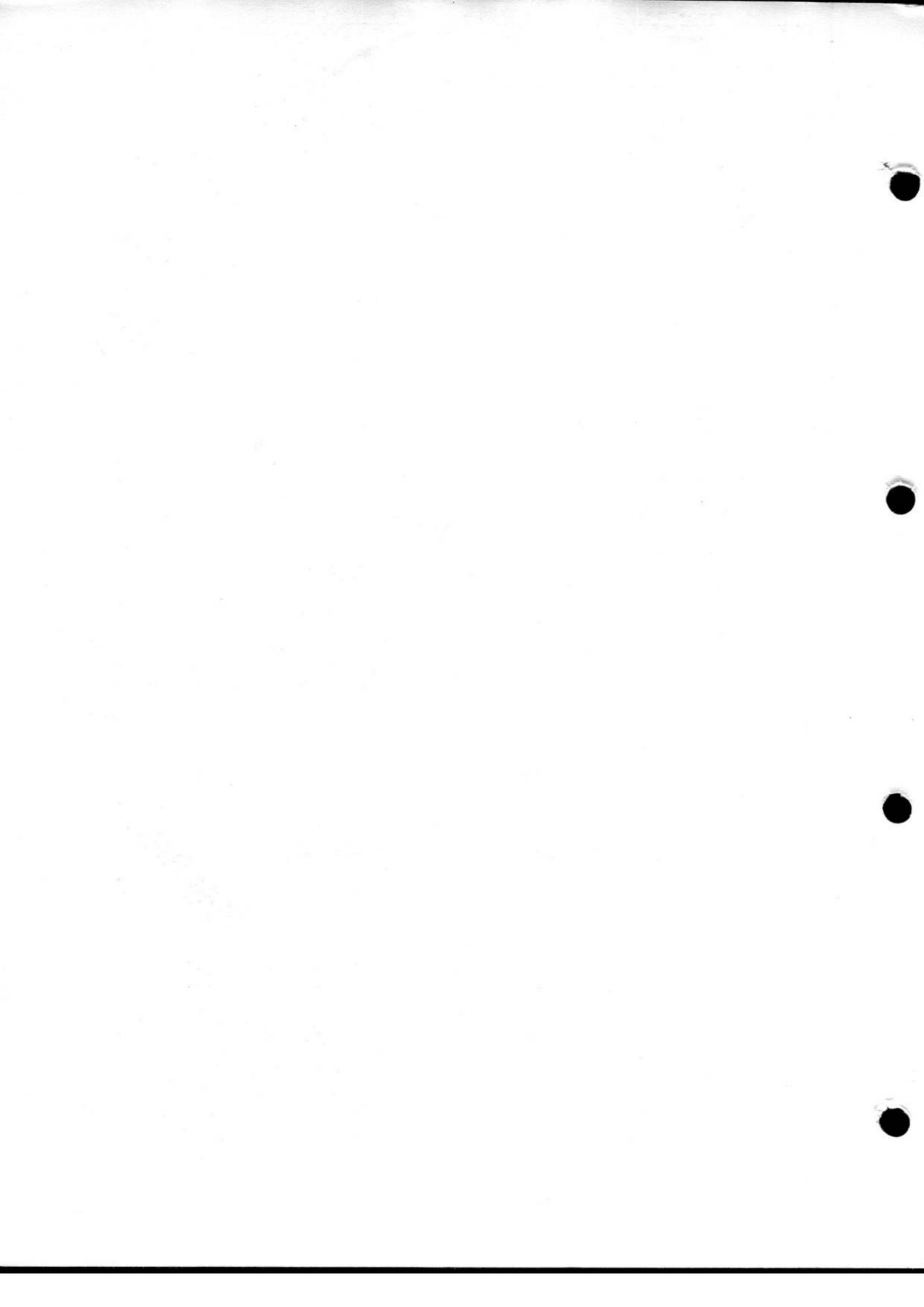


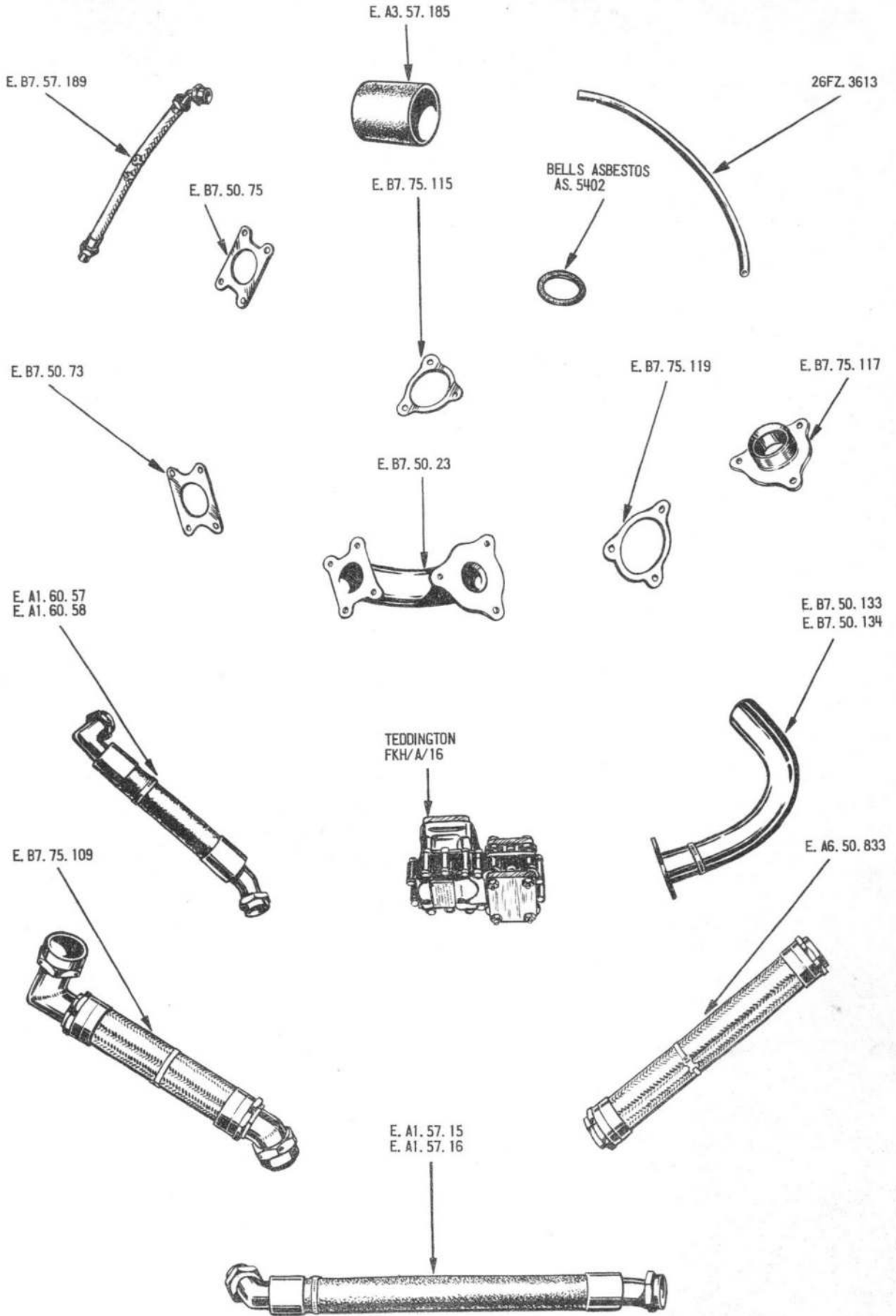
POWER INSTALLATION - ENGINE COWLING



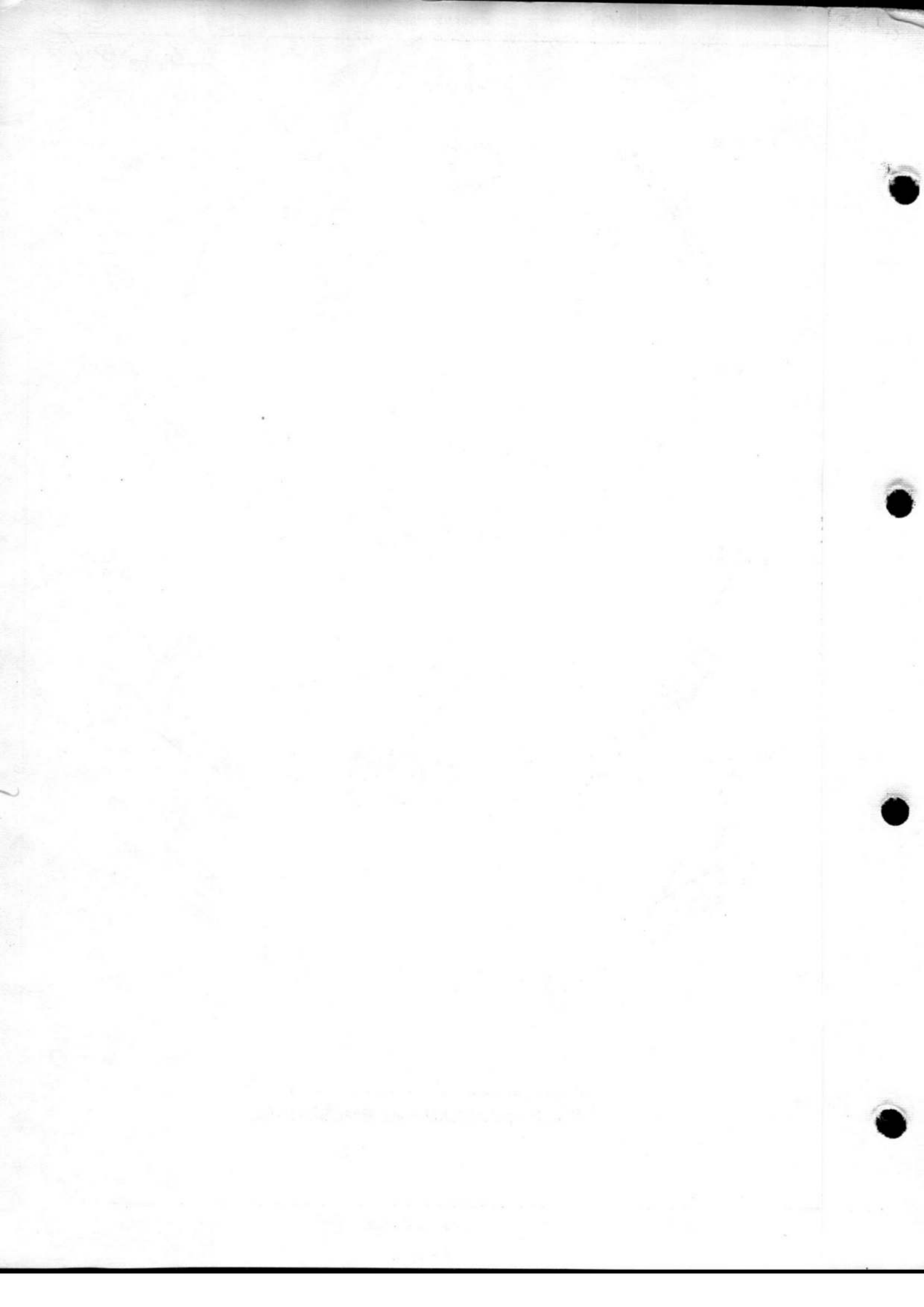


POWER INSTALLATION - ENGINE COWLING - ENGINE MOUNTING





ENGINE INSTALLATION



This file was downloaded
from the RTFM Library.

Link: www.scottbouch.com/rtfm

Please see site for usage terms,
and more aircraft documents.



**TELEBRIEF
CONNECTIONS**

E